

Before using Dongle

Dongle Package including

-MD100 5G dongle *1

-USB type C to C cable *1

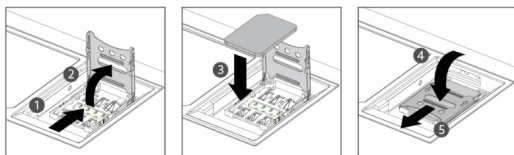
Install SIM Card

Before use the dongle, please insert SIM card. Please find dongle to back side, open SIM door and close after SIM card installed.

Open/Close SIM door



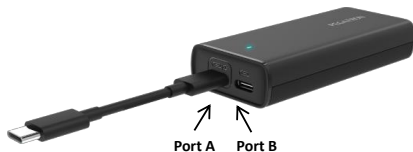
Follow steps to install SIM card.



Plug and Play to use 5G Dongle

Plug in USB cable

Please get USB type c cable, one side connect to dongle.



Plug in Dongle with PC or laptop. Wait 15 seconds, you can see dongle LED turn on.



Connect Port A or Port B (USB C to C cable) to device



You can use dongle now. If you see LED color in **Blue**, means good signal. **Green** means fair signal and **Red** means weak signal. **Blink Red** means error.

Note: Use your 5G dongle connected only with Listed ITE equipment.

Note: Under special case, user may try to connect an external PD power adapter to another dongle USB port, if end device is not able to provide enough power required by dongle.

Note: To prevent any damage, dongle only accept 5V/3A or 9V/3A or 12V/3A power sources via USB type-C connector. If need further assistance please contact local agency for further information.

Note: The power supply cord(s) must be plugged into socket-outlet(s) that is / are provided with a suitable earth ground.

5G Dongle and USB 2.0 condition

5G Dongle was design for USB 3.0 connection, due to USB 2.0 spec. data rate and power limitation does not meet dongle requirement.

However, 5G dongle data rate, stability does not guarantee to work well with USB 2.0.



USB 2.0 Type A Port

Fail as

(1) connect on Port A (USB C to A cable)

(2) only using ONE USB 2.0 C to A cable connect.



Via Port A connect (USB C to A cable) to device

Workaround for USB 2.0 condition

We create criteria on USB 2.0 use case workaround. If host device (PC, Laptop) on have USB 2.0 Port. Please follow below instruction can get workaround solution.



Via Port A connect (USB C to A cable) to external PD power adapter



Via Port B connect (USB C to A cable) to device

If still needed to connect device via USB 2.0 (type A), need to follow 2 criteria:

(A) Need two USB C to A Cables (not mixed). Dongle Port B connect (USB C to A cable) to device.

Dongle Port A connect (USB C to A cable) to external power adapter.

(B) Plug in order is (1) Port B connect to host device first. (2) Then Port A connect to power adapter.

Notification:

This equipment has been tested and found to comply with the limits for a Class B digital device, pursuant to Part 15 of the FCC Rules. These limits are designed to provide reasonable protection against harmful interference in a residential installation. This equipment generates, uses and can radiate radio frequency energy and, if not installed and used in accordance with the instructions, may cause harmful interference to radio communications. However, there is no guarantee that interference will not occur in a particular installation. If this equipment does cause harmful interference to radio or television reception, which can be determined by turning the equipment off and on, the user is encouraged to try to correct the interference by one or more of the following measures:

- * Reorient or relocate the receiving antenna.
- * Increase the separation between the equipment and receiver.
- * Connect the equipment into an outlet on a circuit different from that to which the receiver is connected.
- * Consult the dealer or an experienced radio/TV technician for help.

FCC Caution: Any changes or modifications not expressly approved by the party responsible for compliance could void the user's authority to operate this equipment.

This device complies with Part 15 of the FCC Rules. Operation is subject to the following two conditions: (1) This device may not cause harmful interference, and (2) this device must accept any interference received, including interference that may cause undesired operation.

This equipment complies with FCC radiation exposure limits set forth for an uncontrolled environment. End user must follow the specific operating instructions for satisfying RF exposure compliance. This equipment should be installed and operated with minimum distance 5mm between the radiator & your body.