

20140801_System Check_Dipole2450 sn728

Frequency: 2450 MHz; Duty Cycle: 1:1; Room Ambient Temperature: 24.0°C; Liquid Temperature: 23.0°C
Medium parameters used (interpolated): $f = 2450$ MHz; $\sigma = 1.98$ mho/m; $\epsilon_r = 54.2$; $\rho = 1000$ kg/m³;

DASY4 Configuration:

- Area Scan setting - Find Secondary Maximum Within: 2.0 dB and with a peak SAR value greater than 0.0012W/kg
- Electronics: DAE4 Sn1305; Calibrated: 3/3/2014
- Probe: EX3DV4 - SN3554; ConvF(6.24, 6.24, 6.24); Calibrated: 9/26/2013
- Sensor-Surface: 2mm (Mechanical Surface Detection)
- Phantom: Flat Phantom ELI4.0; Type: QDOVA001BA; Serial: SN: 1052

Body/Pin=100mW, d=10mm/Area Scan (8x9x1): Measurement grid: dx=15mm, dy=15mm

[Info: Interpolated medium parameters used for SAR evaluation.](#)

Maximum value of SAR (measured) = 5.98 mW/g

Body/Pin=100mW, d=10mm/Zoom Scan (7x7x7)/Cube 0: Measurement grid: dx=5mm, dy=5mm, dz=5mm

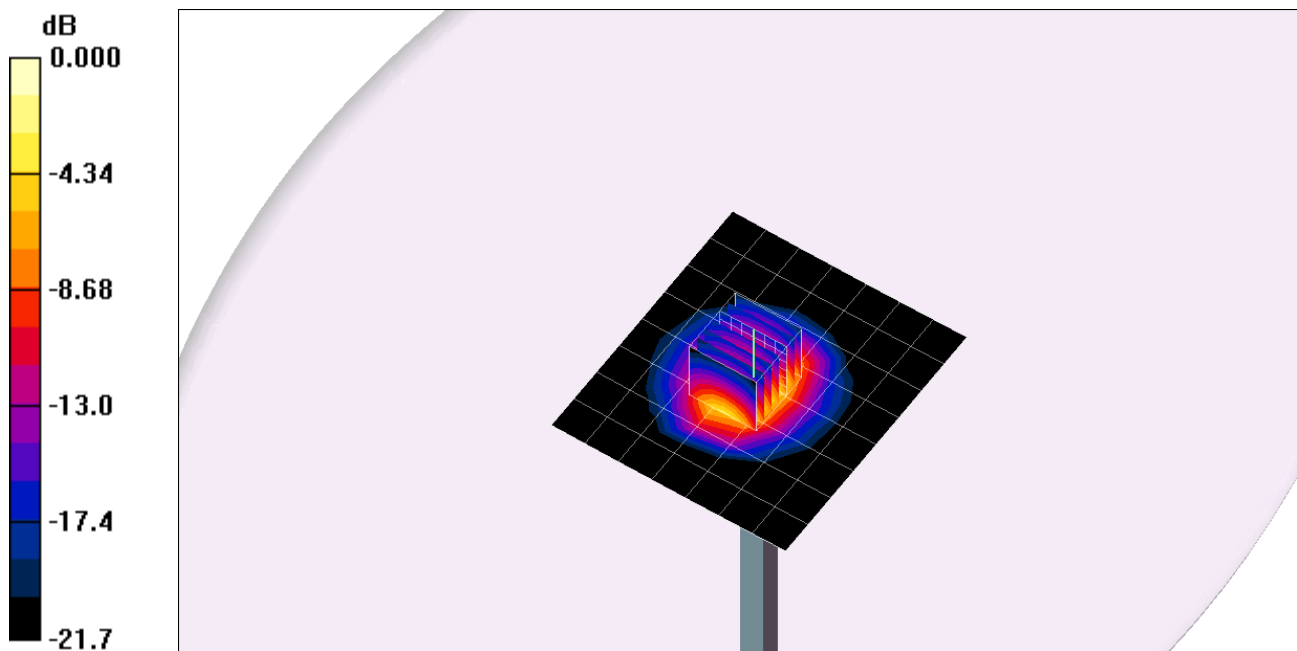
Reference Value = 61.7 V/m; Power Drift = -0.021 dB

Peak SAR (extrapolated) = 10.3 W/kg

SAR(1 g) = 5.1 mW/g; SAR(10 g) = 2.39 mW/g

[Info: Interpolated medium parameters used for SAR evaluation.](#)

Maximum value of SAR (measured) = 7.62 mW/g



0 dB = 7.62mW/g

20140801_System Check_Dipole2450 sn728

Frequency: 2450 MHz; Duty Cycle: 1:1

Body/Pin=100mW, d=10mm/Z Scan (1x1x21): Measurement grid: dx=20mm, dy=20mm, dz=5mm

Info: [Interpolated medium parameters used for SAR evaluation.](#)

Maximum value of SAR (measured) = 6.01 mW/g

