

City Theatrical, Inc. Model 5792 Modular Radio Transceiver – Label Location Information & Label Samples

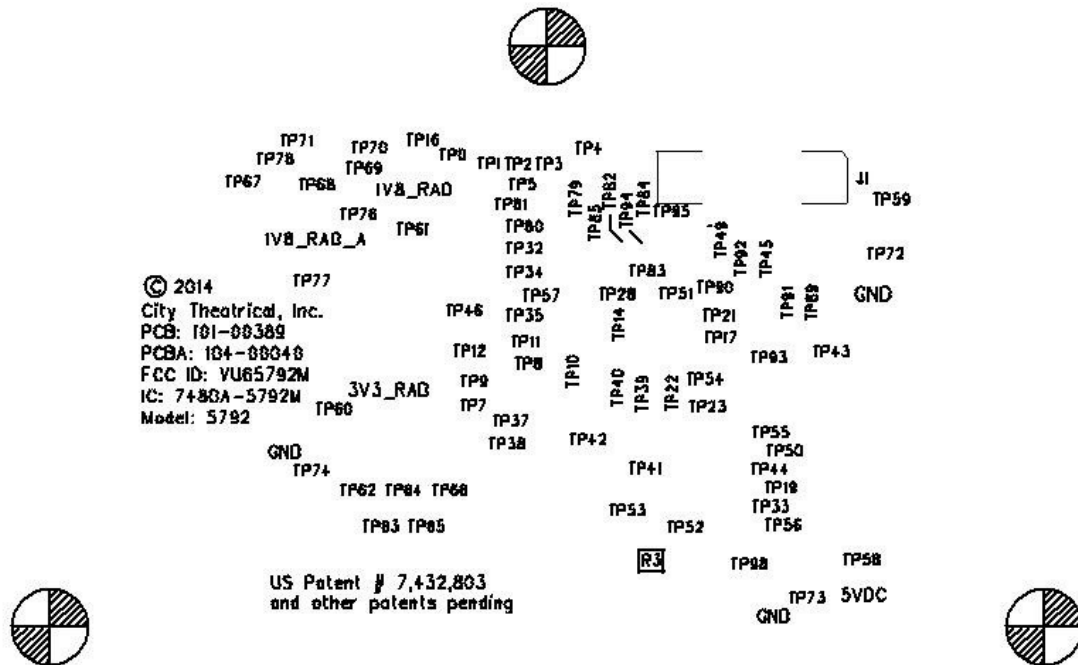
Below are illustrations of labels showing FCC and IC ID markings on a typical host product and on the 5792 Modular Radio Transceiver printed circuit board assembly (PCBA).



Sample of Host Product Marking Label

The label shall be either permanently molded or engraved into the case of the Host product or be printed on a permanent label in which the ink and label material is of a quality and type that will last the life of the device.

In addition to being visible to the consumer, the label shall not be located on a removable part such as a battery cover.



Sample of Model 5792 Modular Radio PCBA Solder-Side Silkscreen Markings

Label information containing FCC ID, IC ID and Model of the modular radio transceiver is permanently etched onto the PCBA as a part of the solder-side silkscreen. The label information will be visible when the modular radio PCBA is unplugged from the host product's main or carrier PCBA.

Please note the above illustration is a checkplot of the PCBA solder-side silkscreen. The three circular marks are fiducial points of the checkplot, and are not part of the actual silkscreen.

The next two photographs illustrate the actual physical location on the PCBA where the label information containing FCC ID, IC ID and Model of the modular radio resides.

Please note the information contained in the two photos is not up-to-date. For the actual information pertaining to this certification, please see “Sample of Model 5792 Modular Radio PCBA Solder-Side Silkscreen Markings” on the previous page of this document.

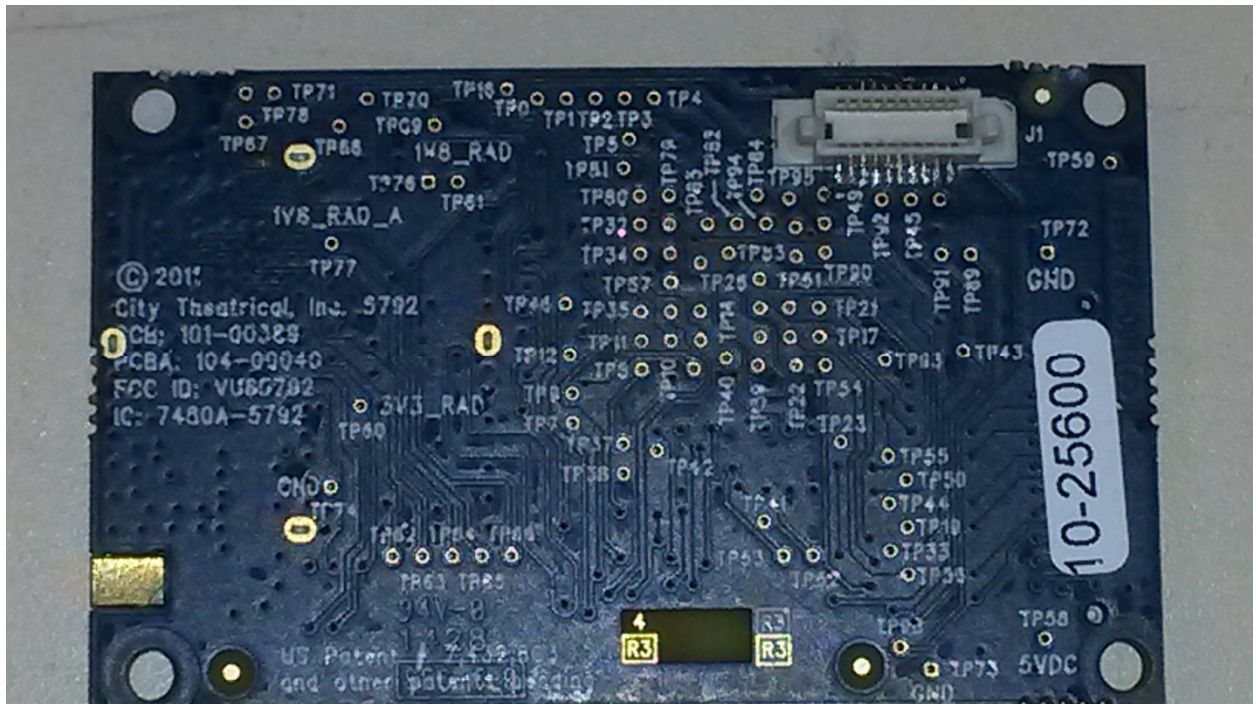
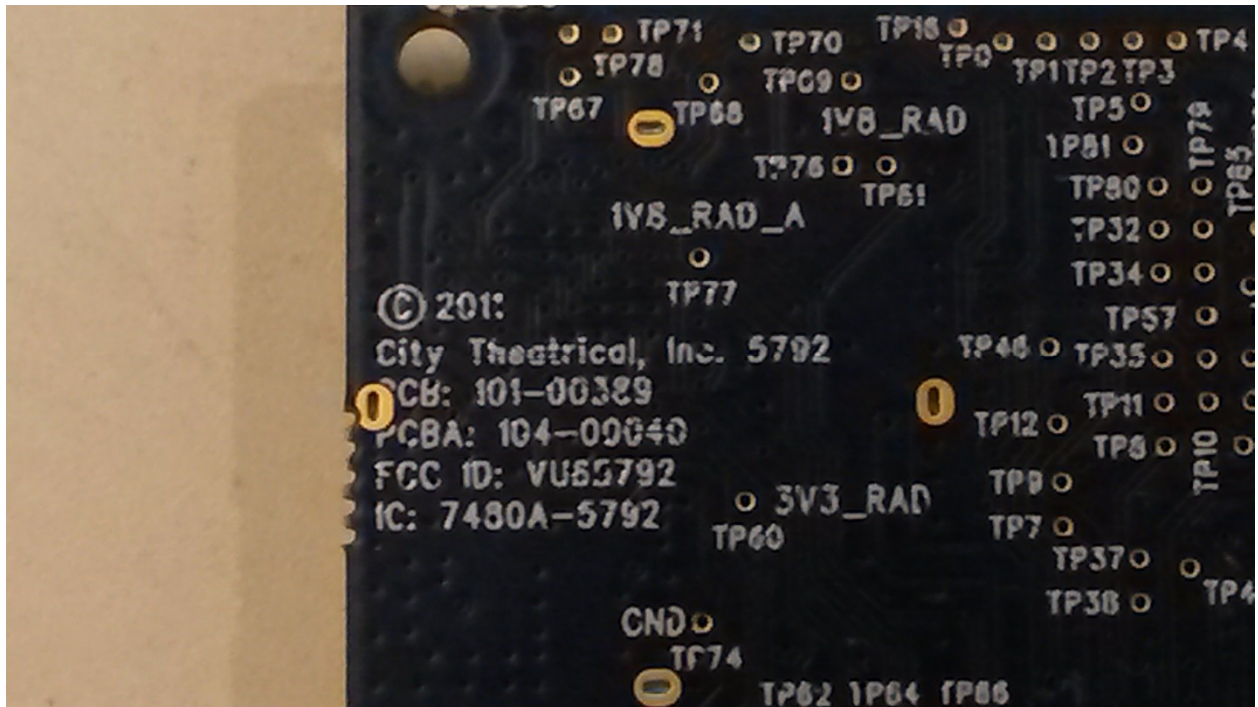


Photo of Actual 5792 Modular Radio PCBA, Solder Side



Close-up Photo of FCC ID, IC ID & Model Information Will Be