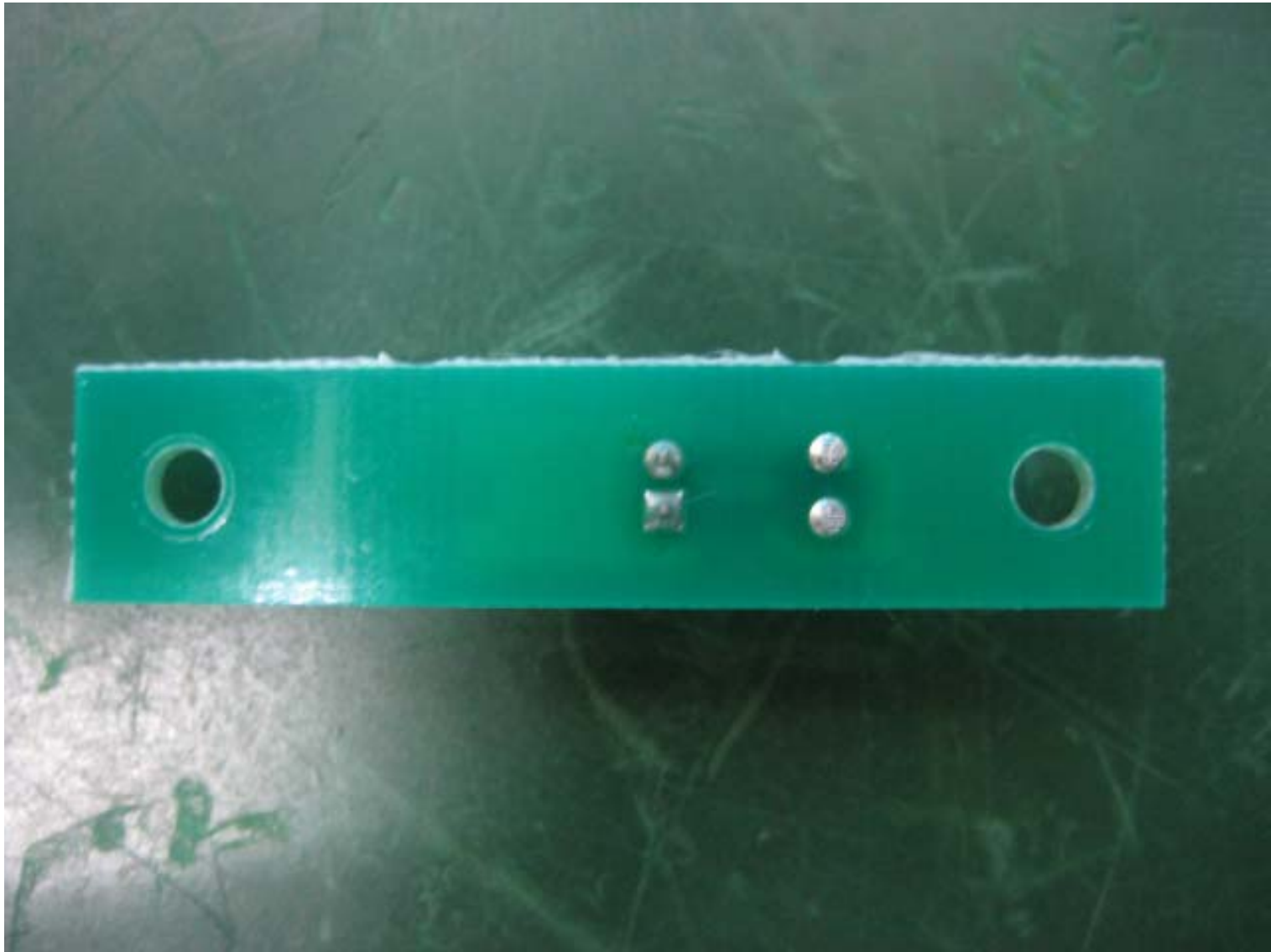


U1

CON1

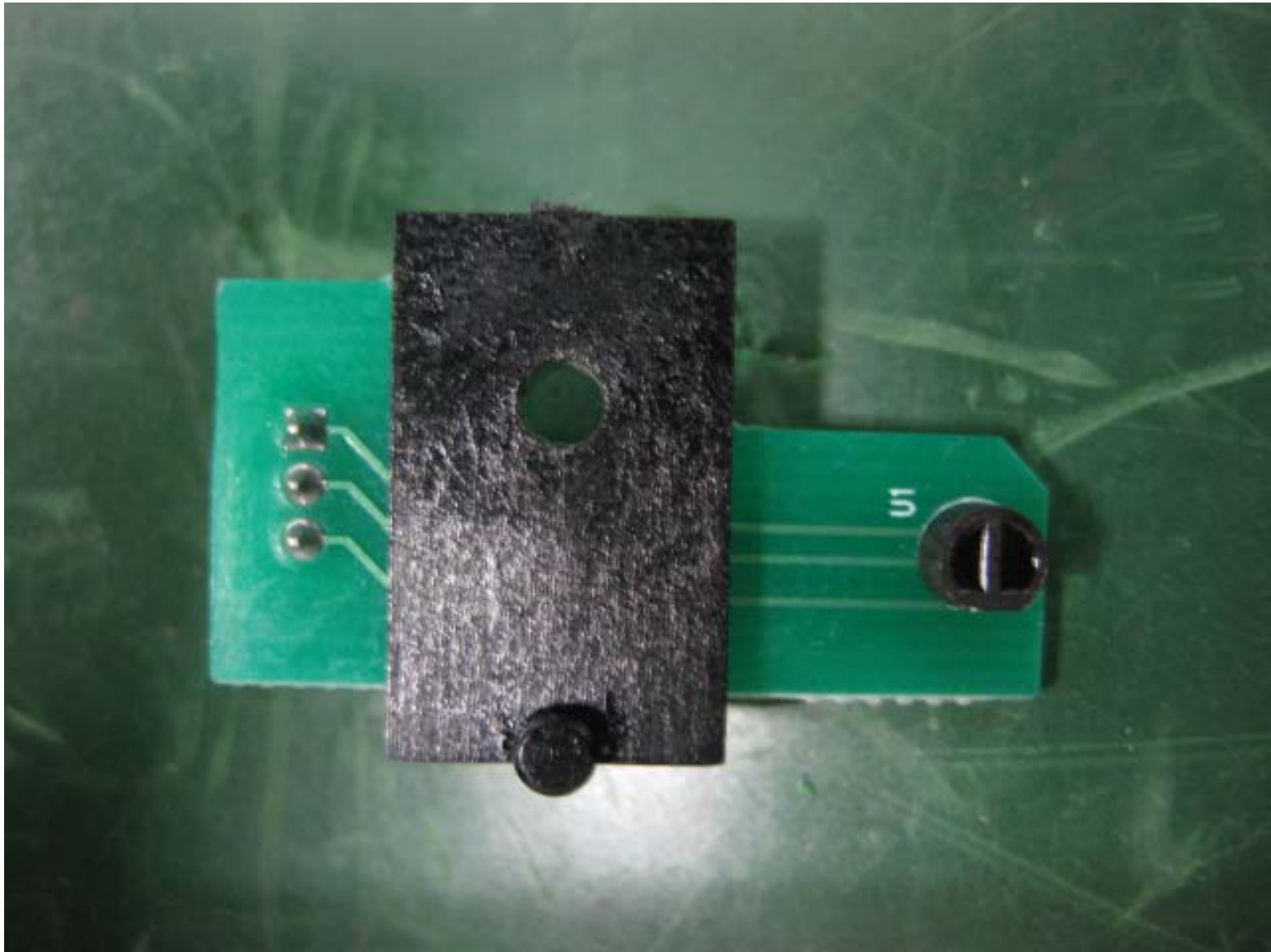
INA SYSTEM  
SEN\_REV B B,D Rev.0.2



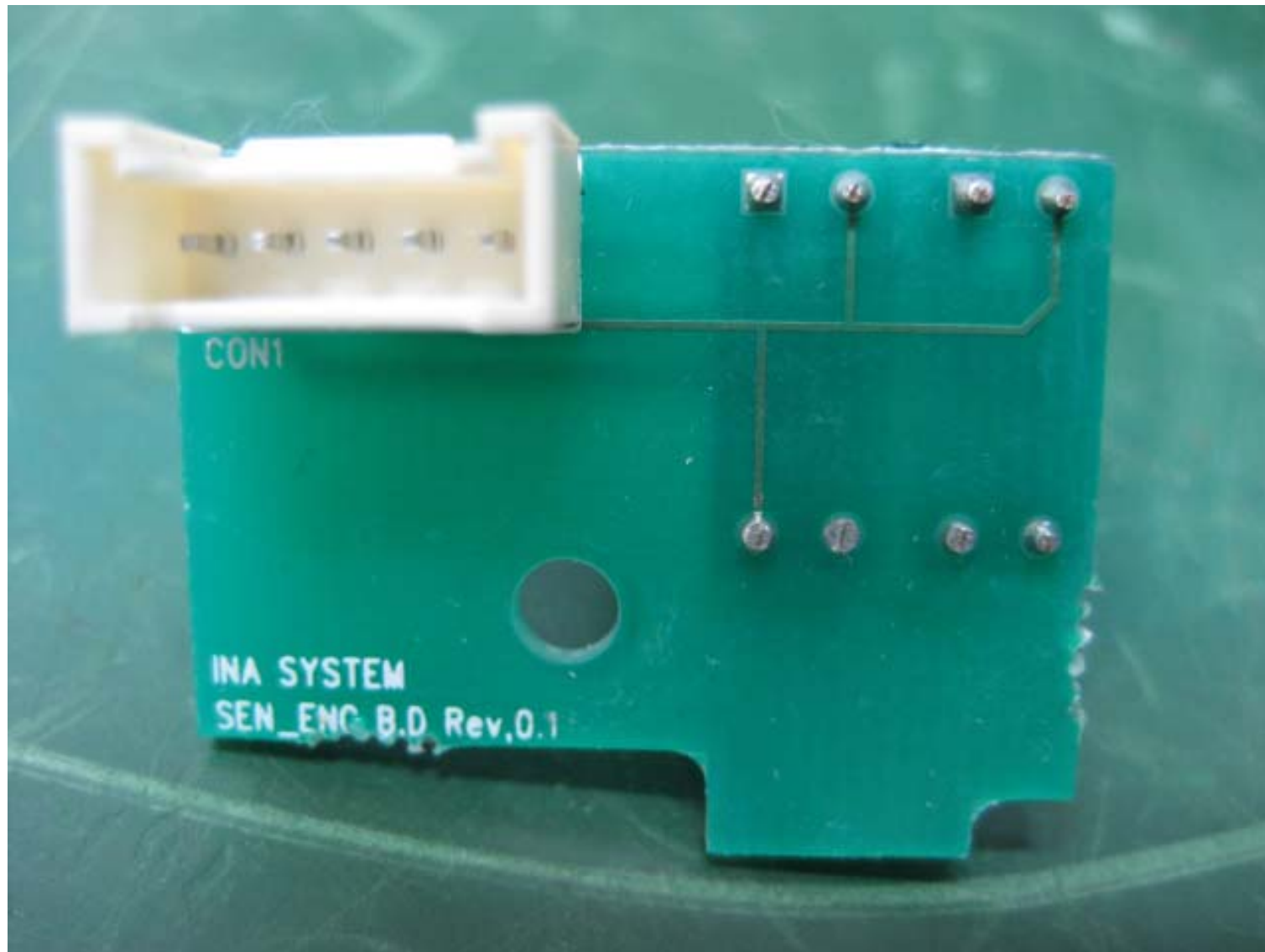


INA SYSTEM  
SEN\_CASE B,D Rev,0.2

CON1

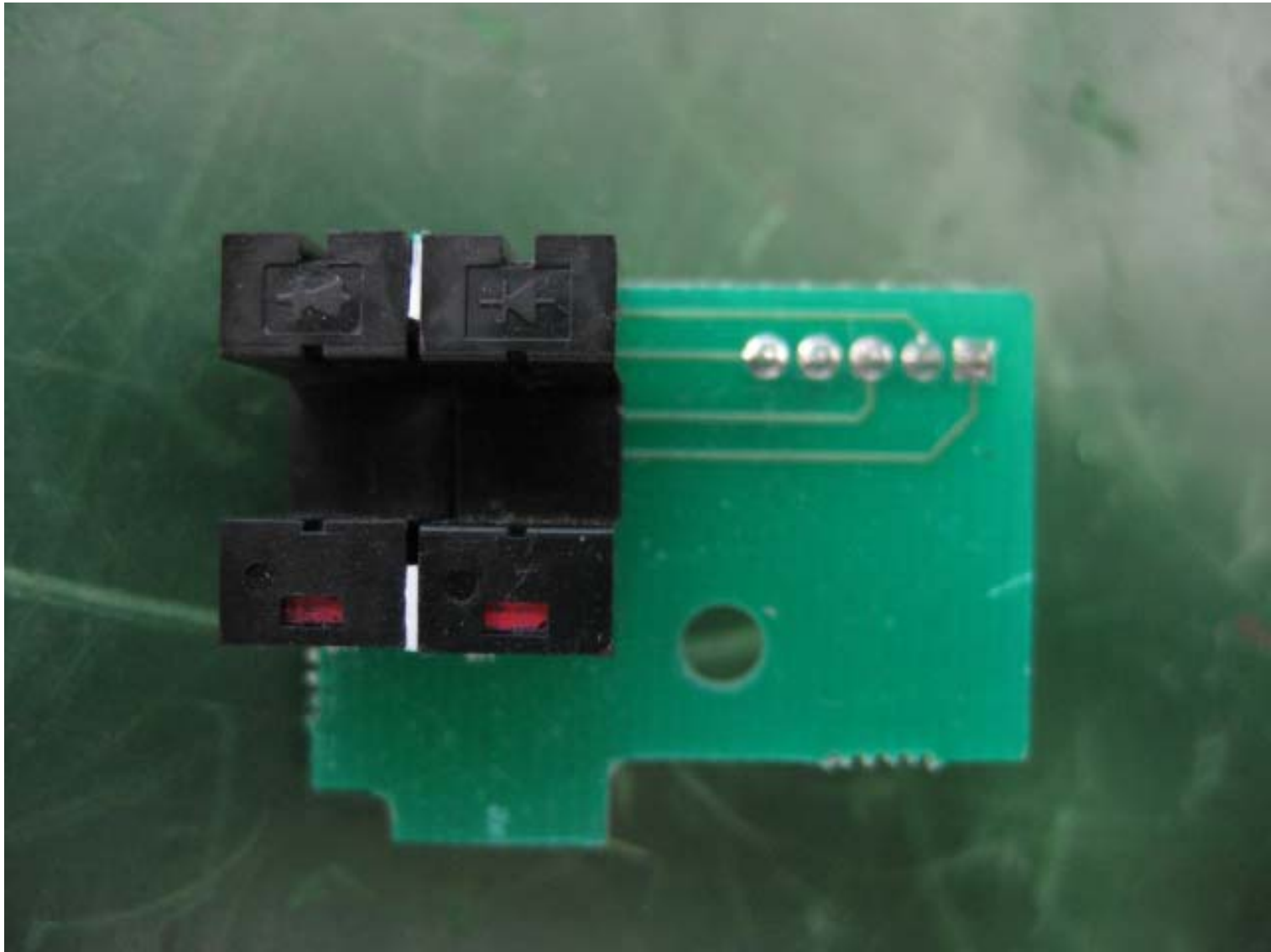


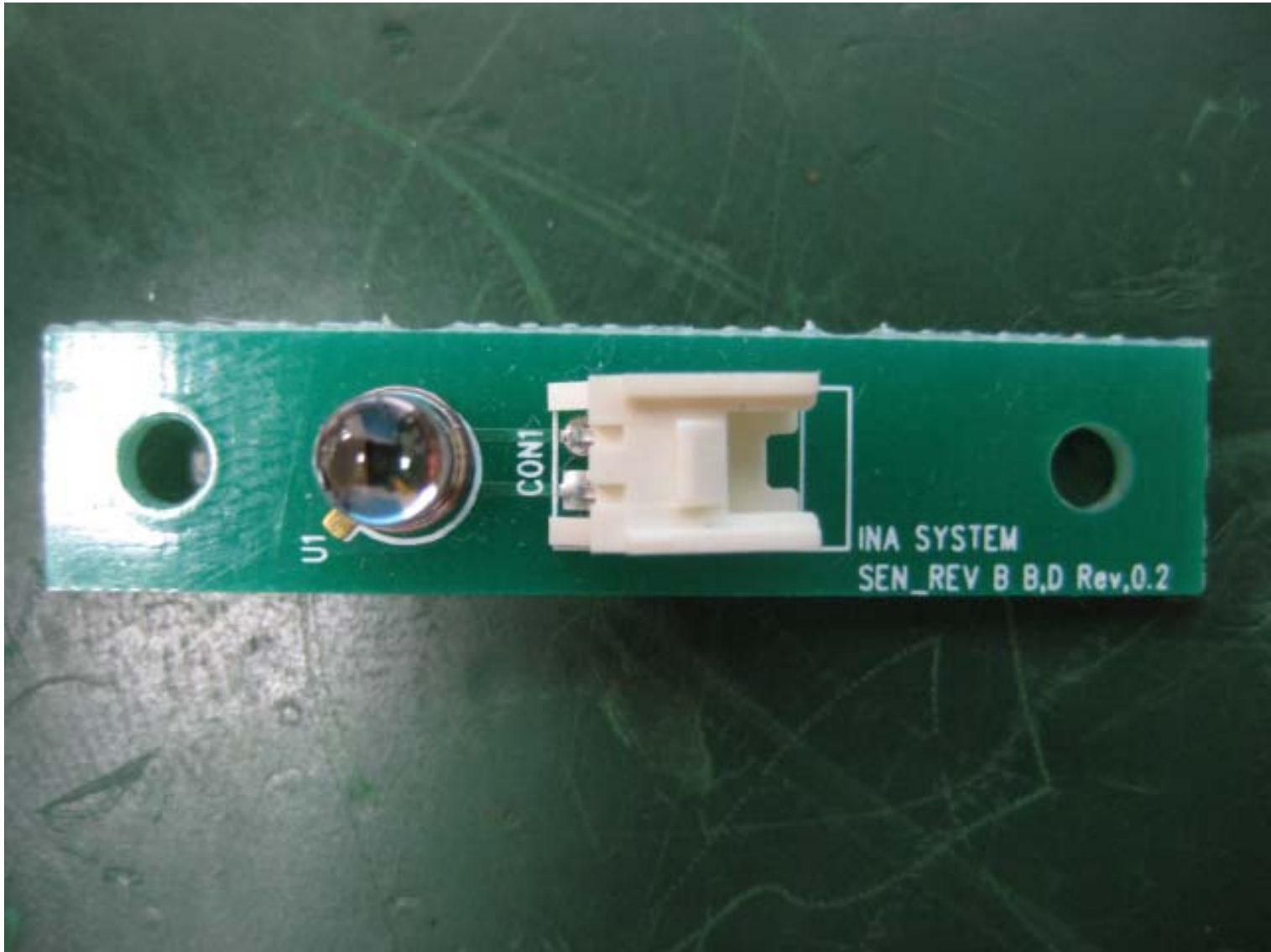




CON1

INA SYSTEM  
SEN\_ENC B.D Rev,0.1



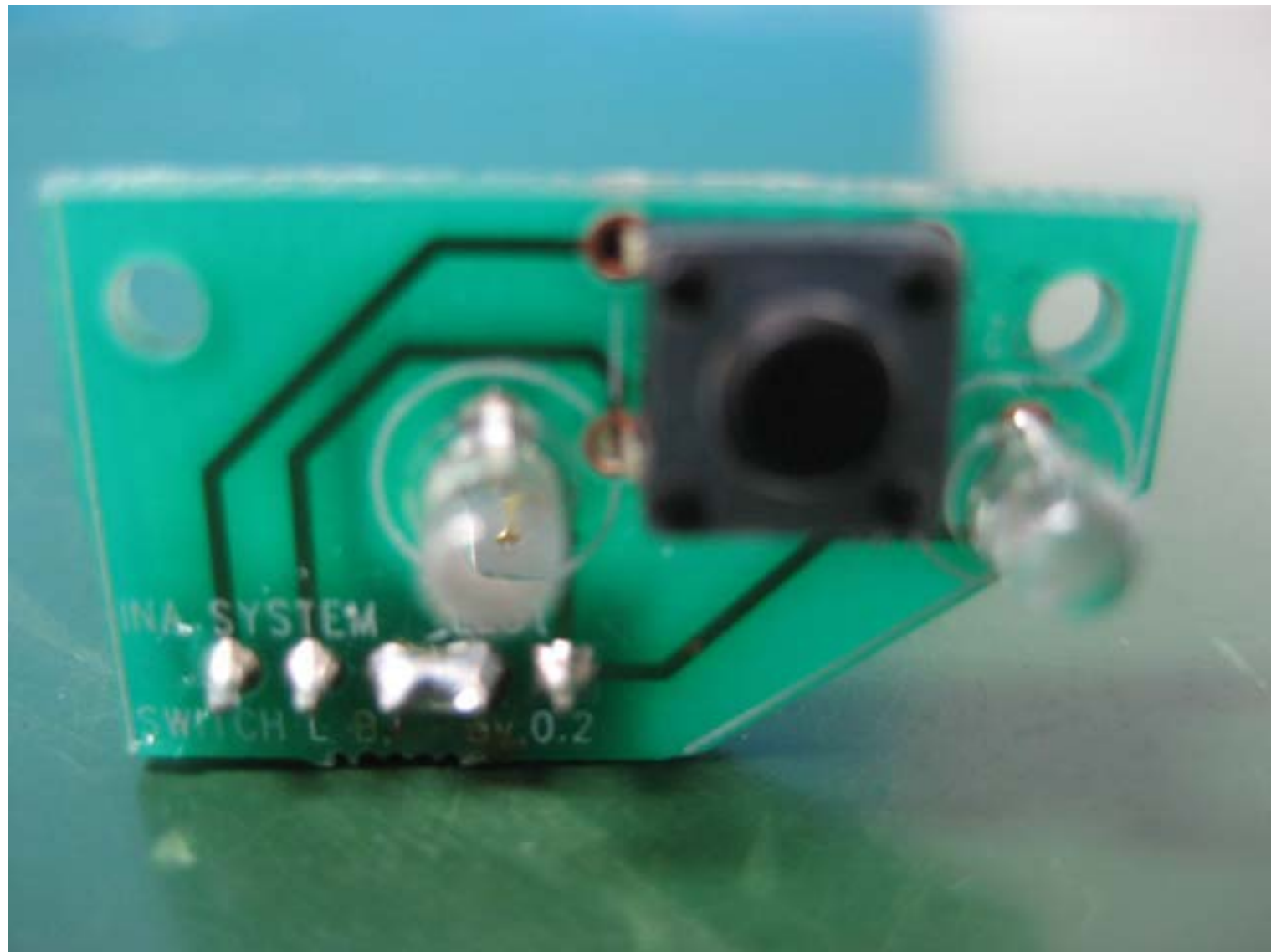


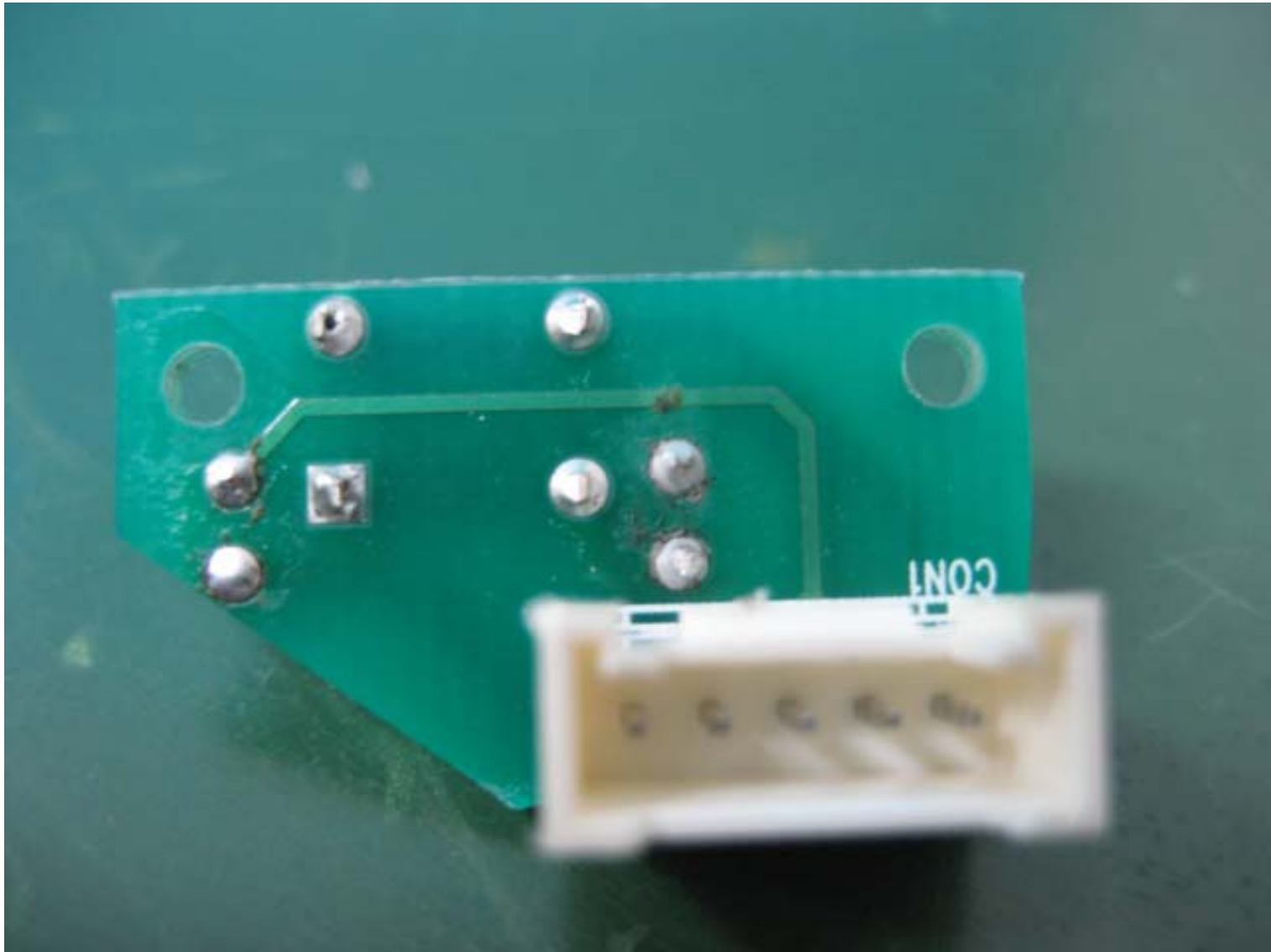
U1

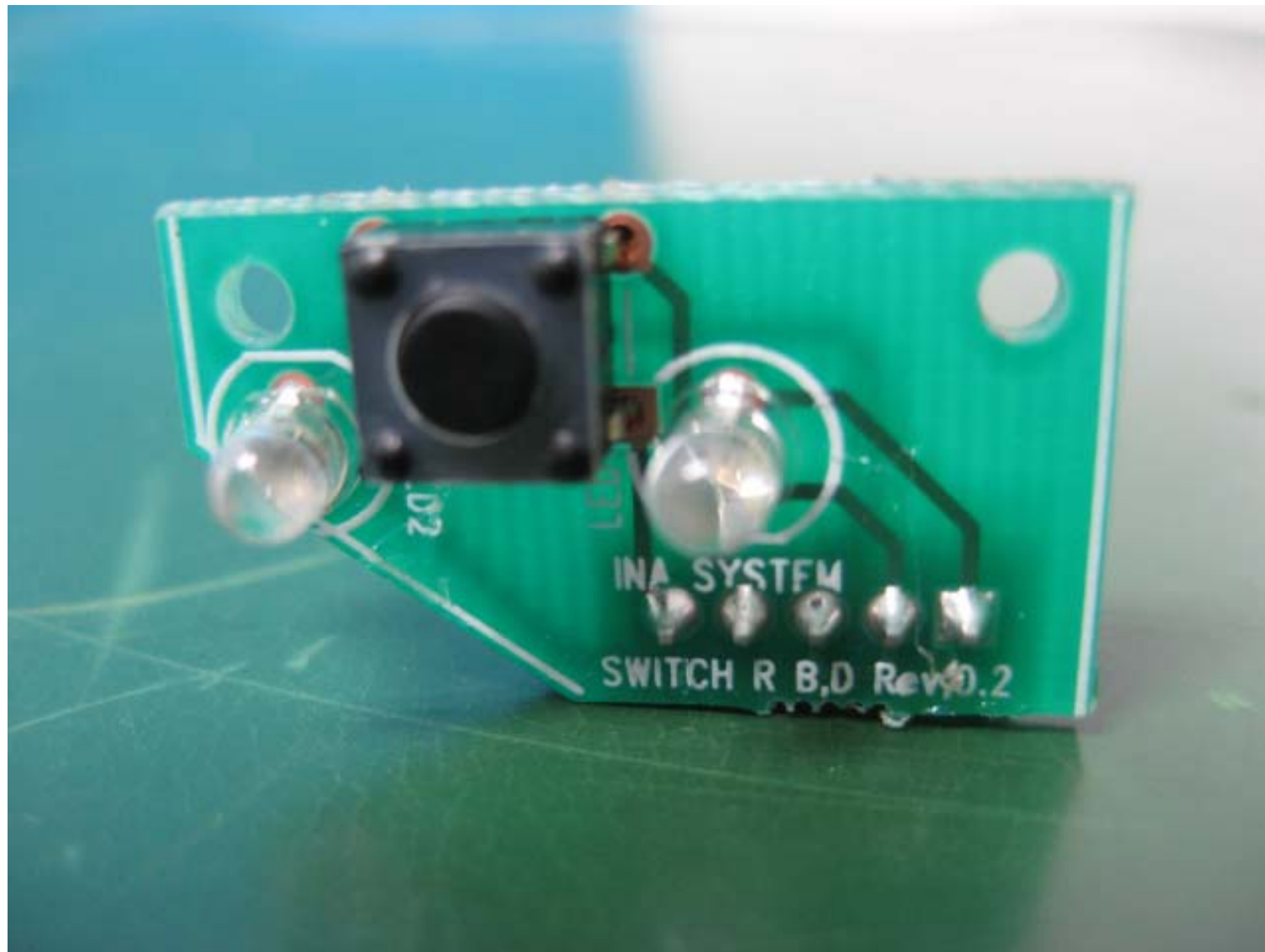
CON1

INA SYSTEM  
SEN\_REV B B,D Rev.0.2



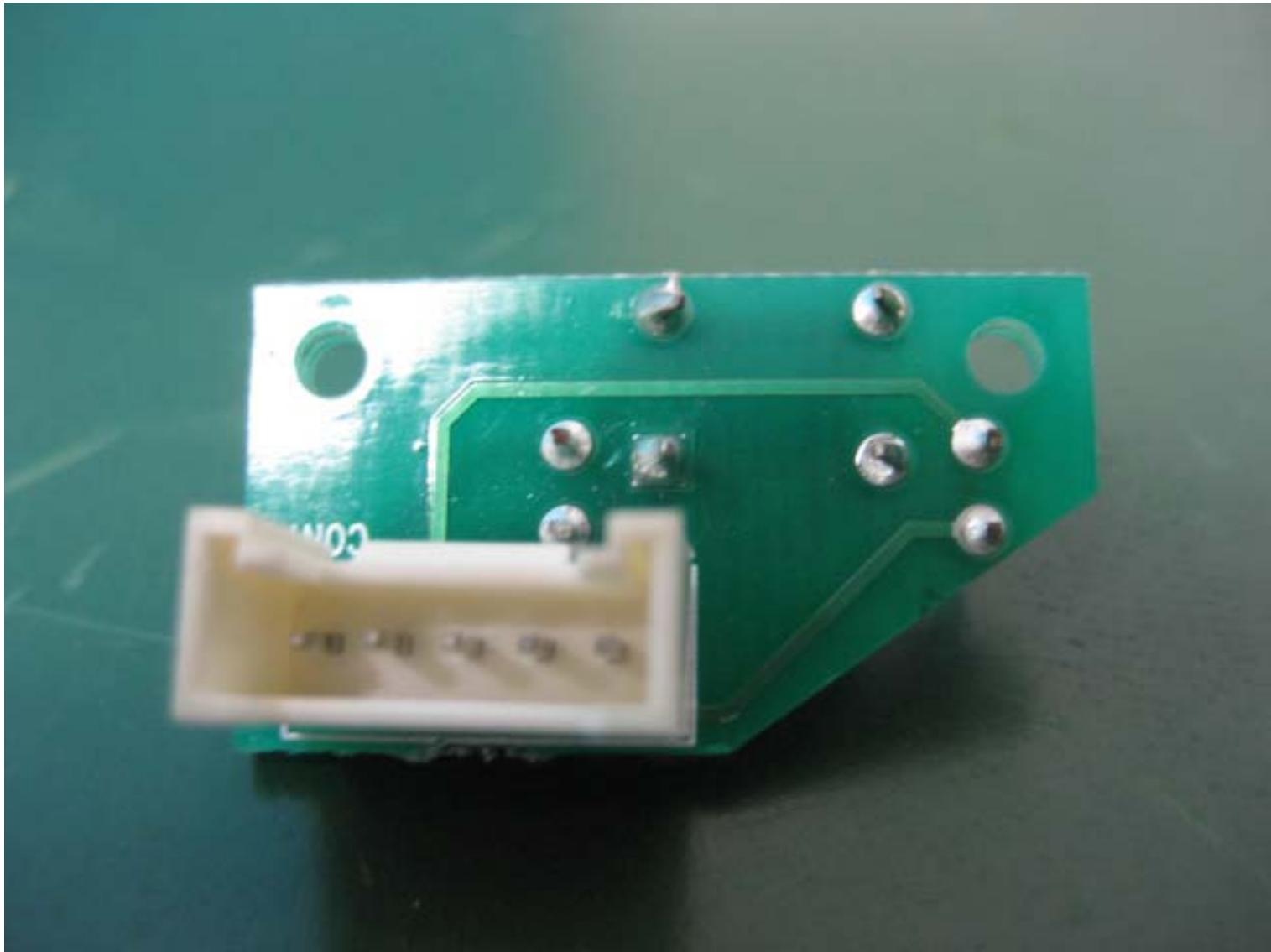




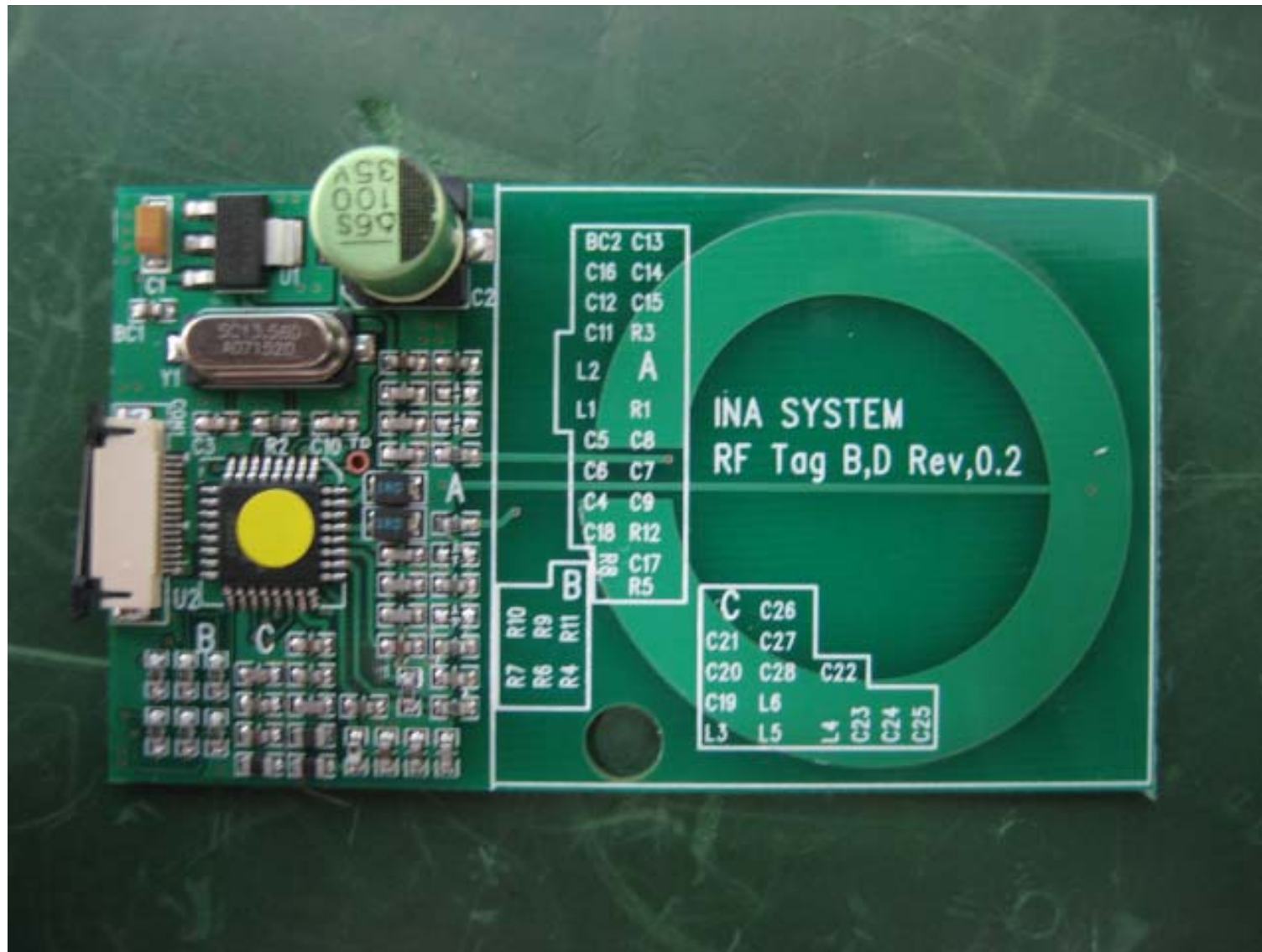


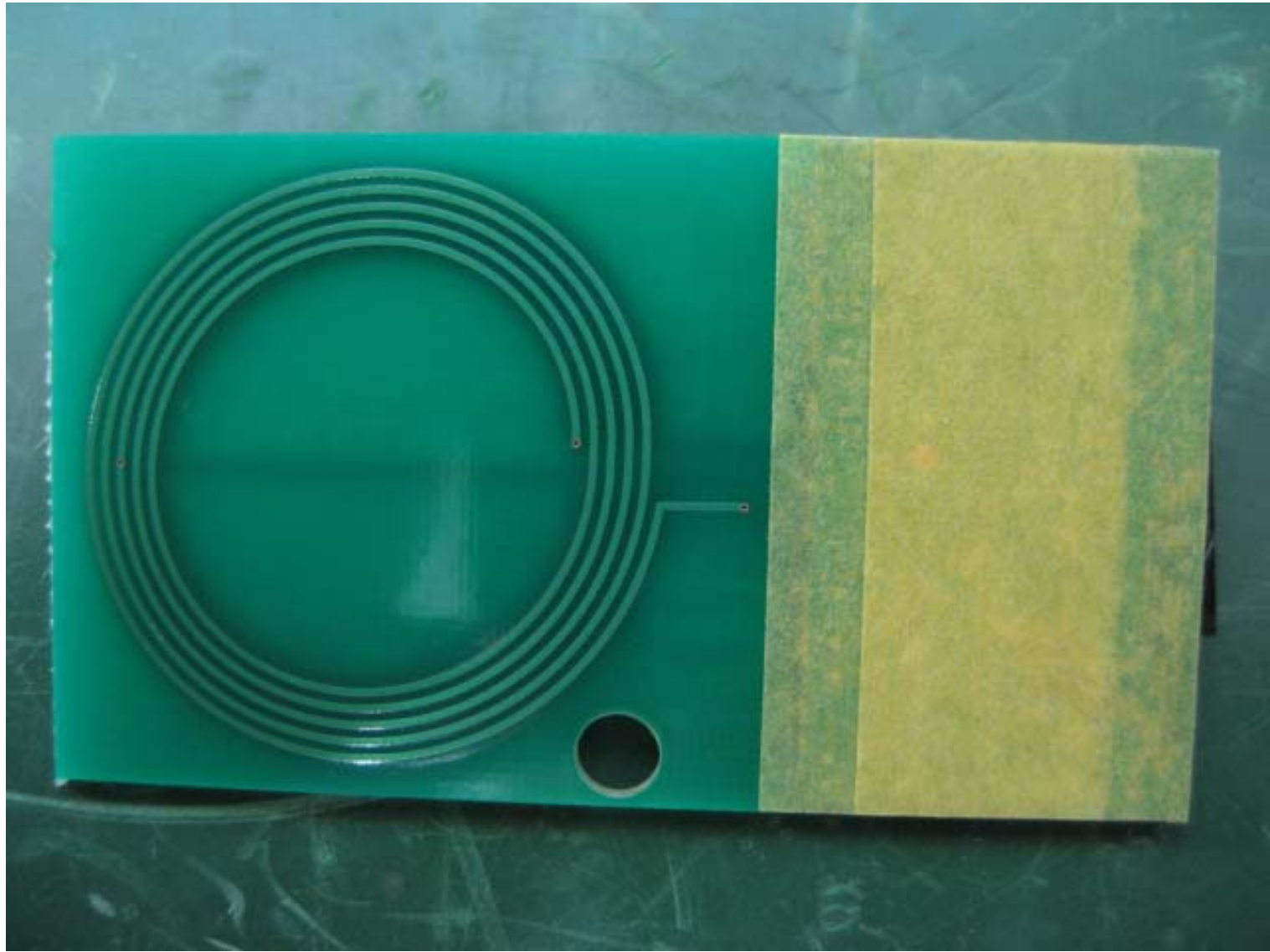
INA SYSTEM  
SWITCH R B,D Rev 0.2

D2











KEE-57-12GAN2-SIT 63-00170 R=2962 JAPAN

LP999020

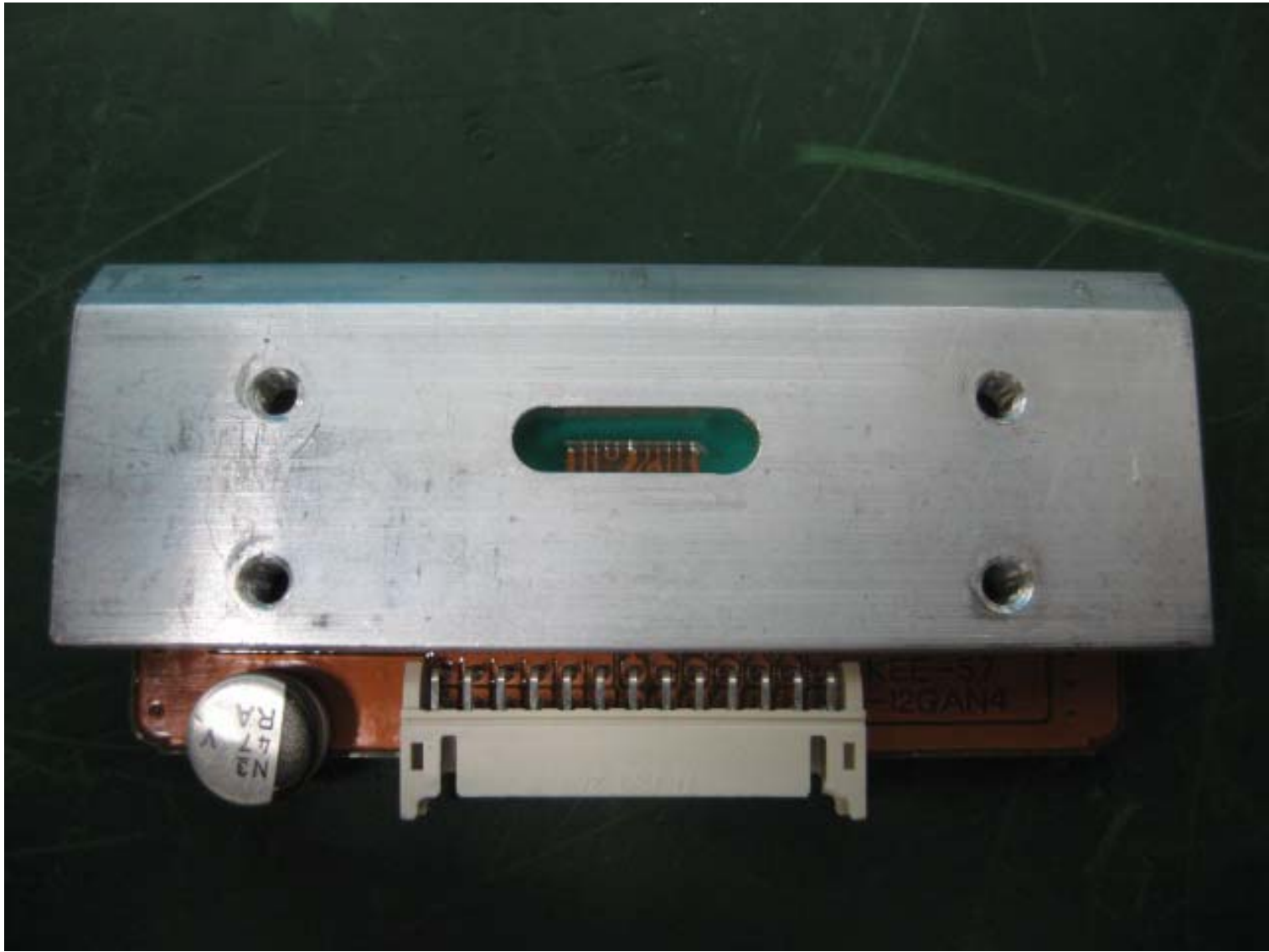
25

F33 94V-0 A

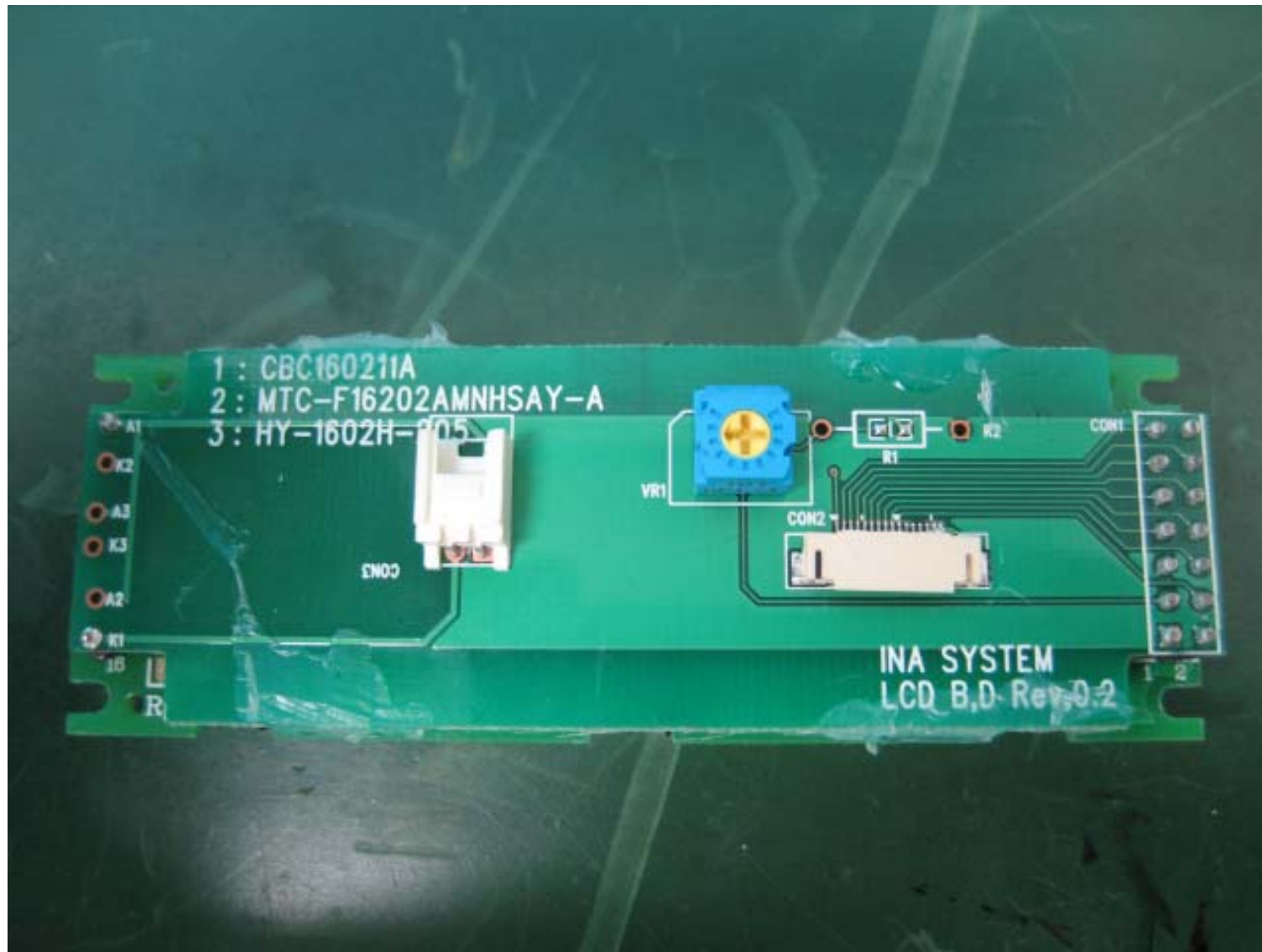
1

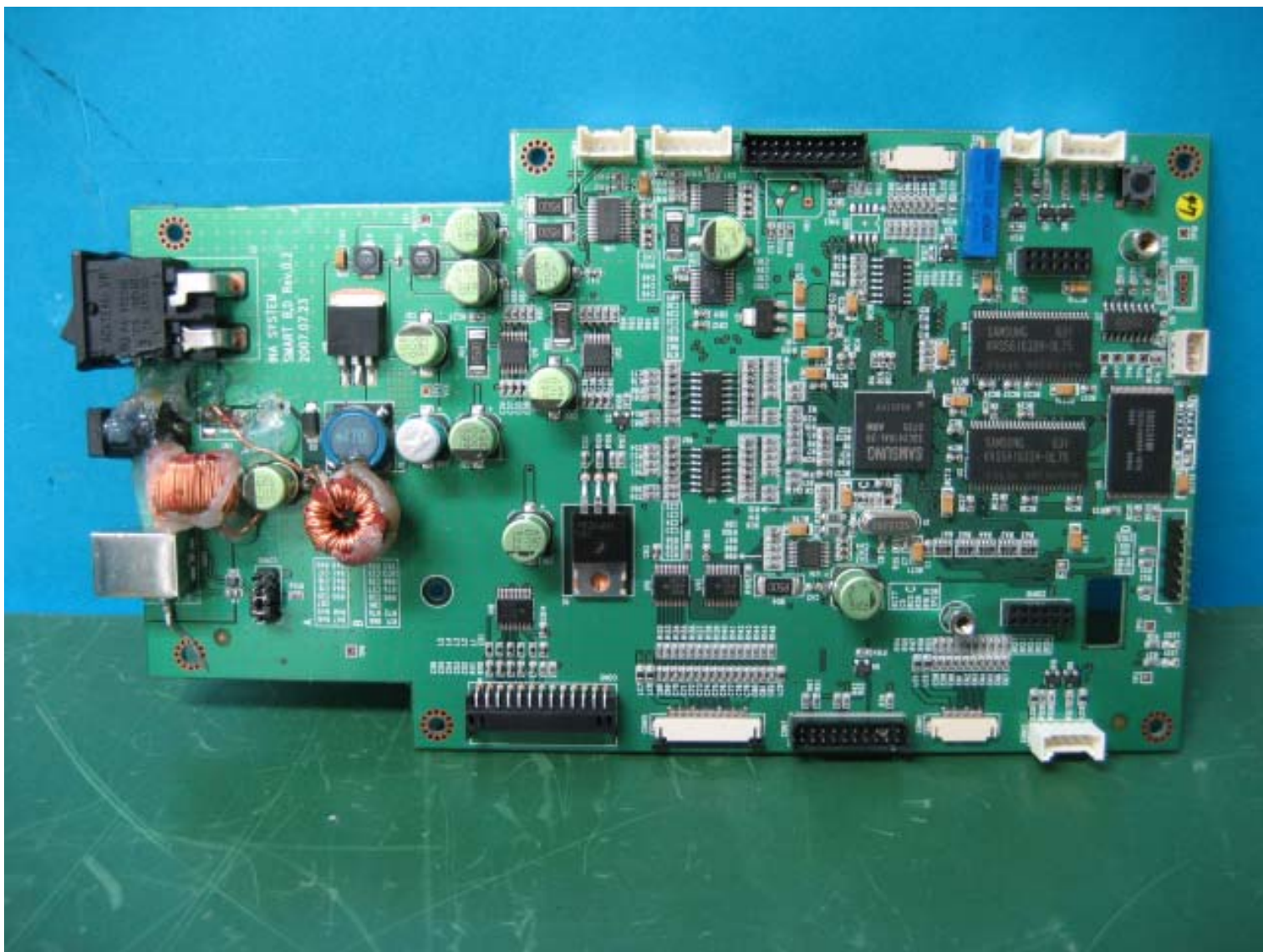
2

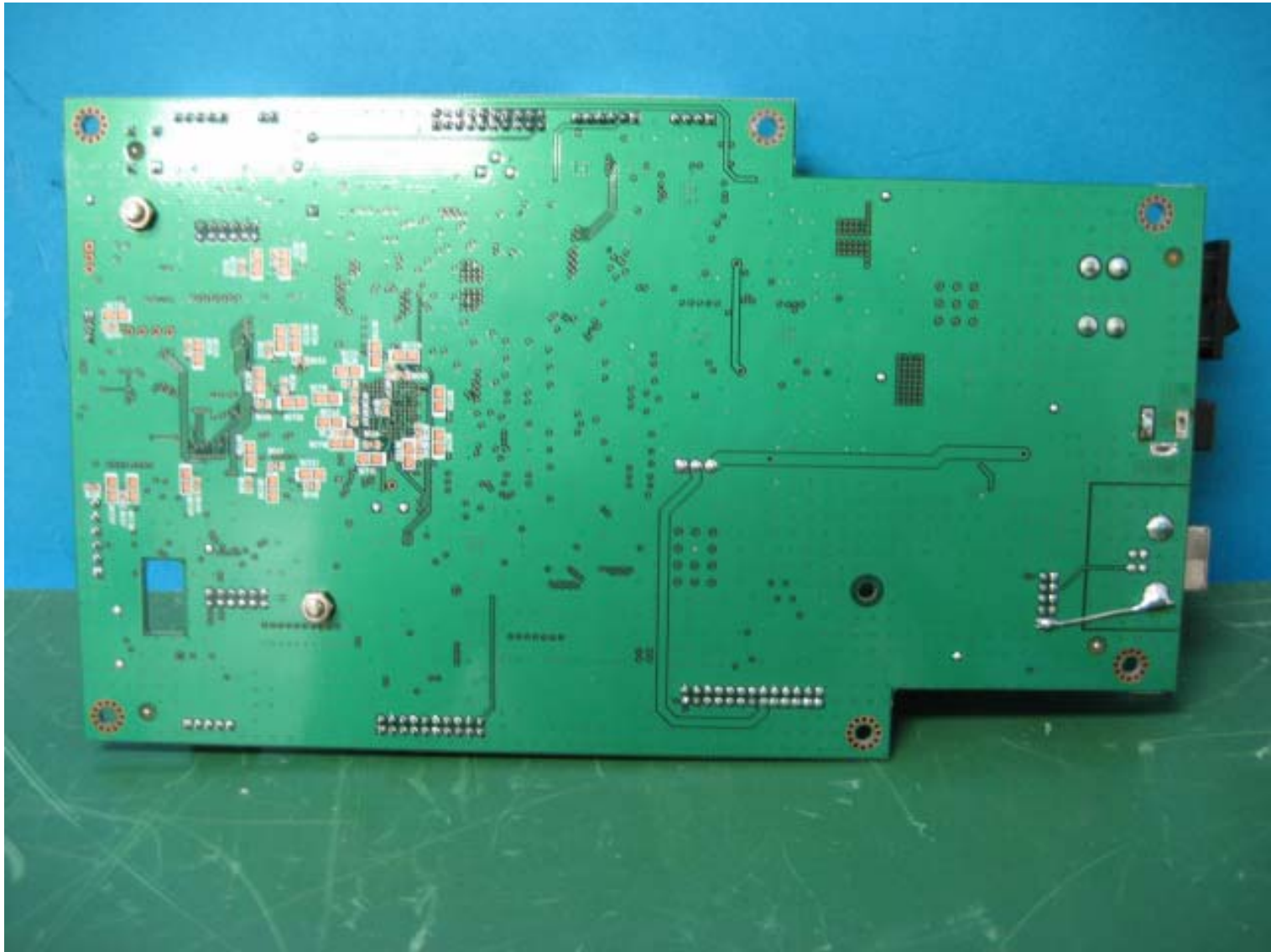
+

















LI SHIN INTERNATIONAL ENTERPRISE CORP.

AC ADAPTER 交流适配器/电源供应器

MODEL: 型号/型号: 0452B2490

INPUT: 输入/输入: 100-240V~, 50-60Hz 1.5A

OUTPUT: 输出/输出: 24V  $\equiv$  3.75A

品名: 직류전원장치  
모델: 0452B2490  
정격입력: AC100-240V~ 50-60Hz 1.5A  
정격출력: DC24V  $\equiv$  3.75A  
제조회사: Suzhou Li Shin  
Electronic Co., Ltd. / China  
수입판매원: 일로산업  
A/S 전화: (02)522-1665/1666



KTL SU09333-5001  
주의: 지정된 제품에만 사용하세요.



"Apparätet må tilkoples jordet stikkontakt"  
"Apparaten skall anslutas till jordat uttag"  
"Laitte on liitettävä suojamaadoitus-  
koskettimilla varustettuun pistorasiaan"  
For IEC60065 products only



For Indoor Use Only

仅限室内使用/仅限室内使用



CAUTION

RISK OF ELECTRIC SHOCK  
DO NOT OPEN



注意電擊危險, 請勿打開



A30729122890

MADE IN CHINA 中国制造/中国製造 CM-2

24018LF-B412