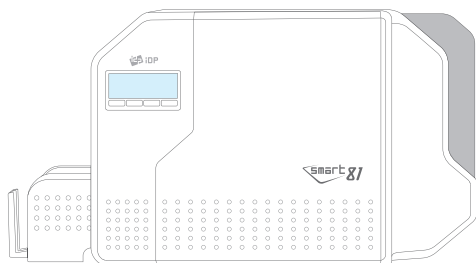


New Trusted Identity Begins



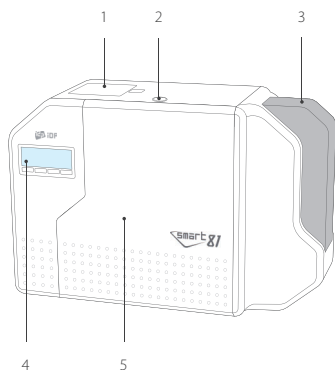
## QUICK INSTALLATION GUIDE



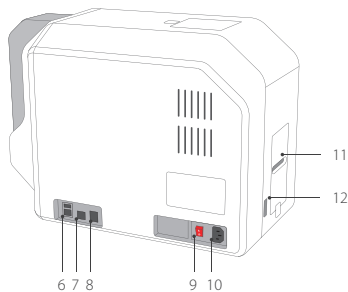
000000

## Features

Front



Back



1. Air Vent
2. Physical Lock <sup>\*option</sup>
3. Input Hopper
4. LCD & Buttons
5. Front Cover

6. Ethernet & External USB Port
7. USB Port
8. RS232 Port
9. Power Switch
10. AC Power Connector
11. Card Exit Slot
12. IR Comm. Port

---

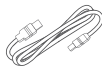
### Included



SMART-81  
Card Printer



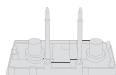
AC Power  
cable



USB Cable



Card Stacker



Ribbon  
Cartridge  
(in the Printer)



Retransfer Film  
Cartridge  
(in the Printer)

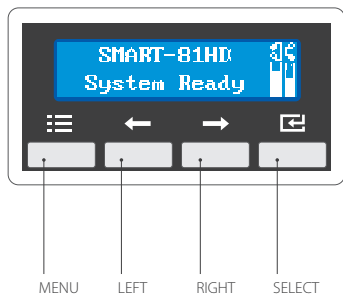


Cable  
Protection Cover



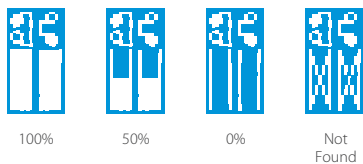
Quick Guide

## Display & Buttons



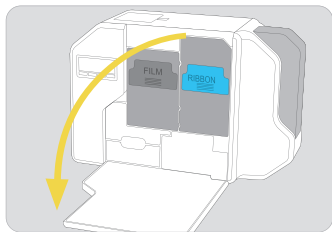
There is an LCD and 4 buttons on the front side of the SMART-81. Users can check the printer status and change various printer settings.

The LCD icons below display the remaining amount of retransfer film or ribbon and status.

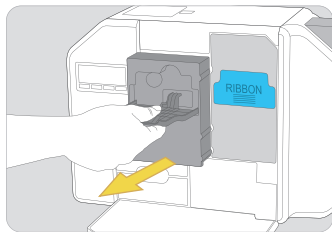


※ Please refer to the “User manual” for how to set the LCD menu.

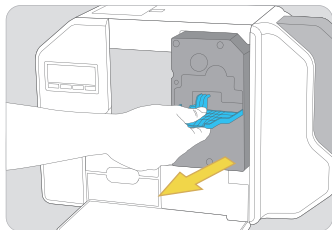
## I. Printer Installation



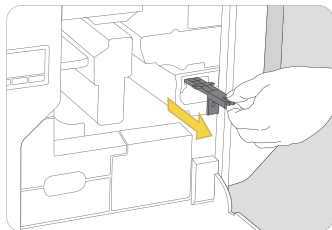
1. Open the front side of the printer cover.



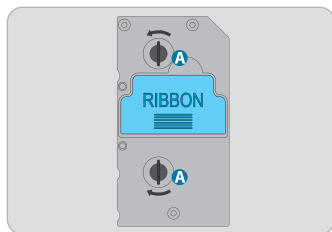
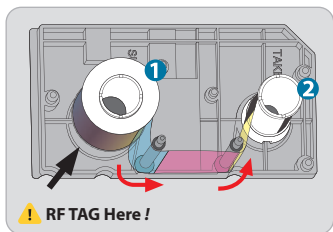
2. Hold the Retransfer film cartridge handle and pull it out.



3. Hold the Ribbon cartridge handle and pull it out.

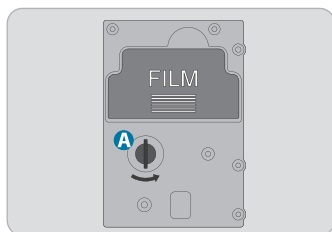
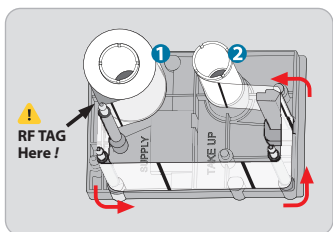


4. Hold the disposable cleaning roller cartridge handle and take it out.



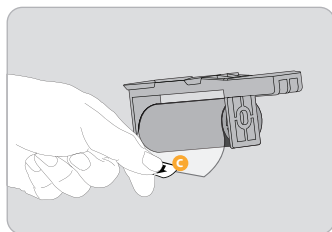
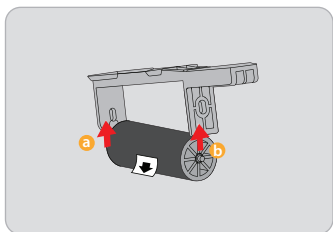
5. Insert the ① ribbon SUPPLY core on the mounting place of the cartridge core until it “clicks”. Route the ribbon around two shafts following the diagram arrow, and insert ② TAKE UP core into the core mounting until it “clicks”.

6. Adjust the tension of the loaded ribbon in the direction of the arrow using the A TENSION KNOB on the front side of the ribbon cartridge.



7. Insert the ① retransfer film SUPPLY core on the mounting place of the cartridge core until it “clicks”. Route the film around four shafts following the diagram arrow, and insert ② TAKE UP core into the core mounting until it “clicks”.

8. Adjust the tension of loaded retransfer film in the direction of the arrow using the A TENSION KNOB on the front side of the film cartridge.

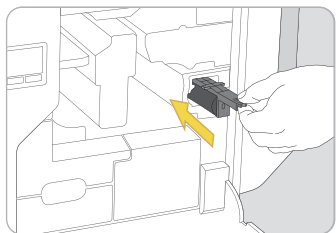


9. Mount the Disposable cleaning roller in order a, b.

10. Remove the c protective wrap from the cleaning roller.

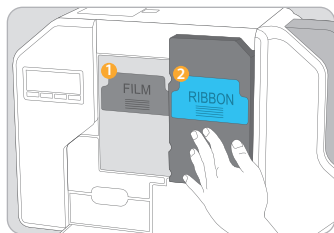


The RF tag side of the supply core should be mounted in the direction of the cartridge surface.



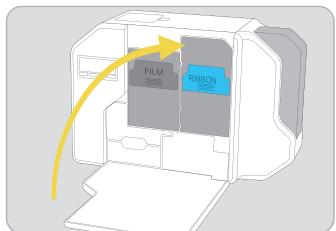
11. Mount the disposable cleaning roller to the printer inside.

---



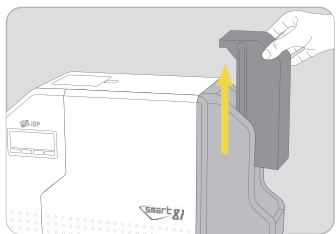
12. ① Mount retransfer film cartridge at first, and then, ② mount ribbon cartridge.

※ The cartridge should be firmly combined with the printer.

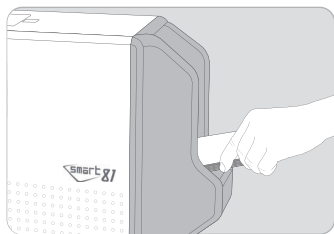


13. Close the front side of printer cover.

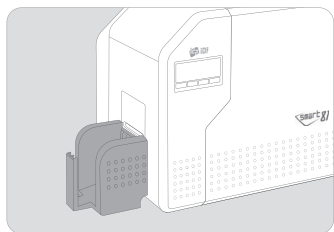
---



14. Open the Input Hopper cover in the direction of the arrow.

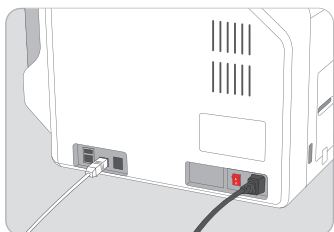


15. Insert the blank card, and then close the Input Hopper cover.



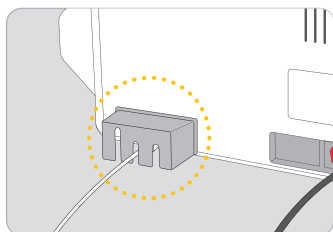
16. Install the card stacker.

---



17. Connect the AC Power cable and USB cable.

---



18. Install the Cable Protection cover.

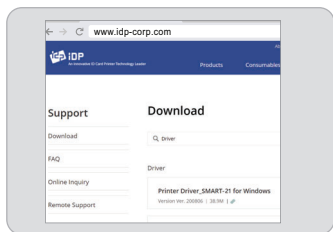
---



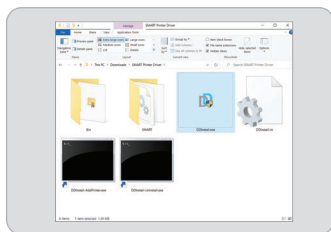
Do not connect the USB cable to the computer and do not turn on the printer at this time as it may interfere with the successful installation of the driver.

It will be prompted during the following instructions on when to turn on the printer.

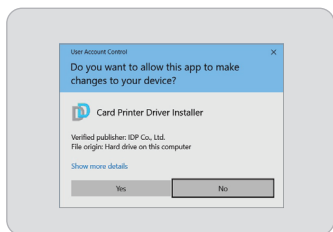
## II. Printer Driver Installation



1. Go to [www.idp-corp.com](http://www.idp-corp.com) and search for "Driver" in the Support - Download menu. Download the "SMART-81 Printer Driver". Extract the driver and all its components (Extract All) from the ZIP file and save it on your PC. Do not install the driver from within the ZIP program.

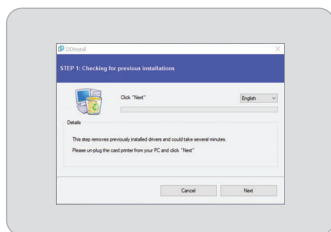


2. Navigate to the extracted zipped files and double click on the "DDinstall.exe" file to begin the installation.



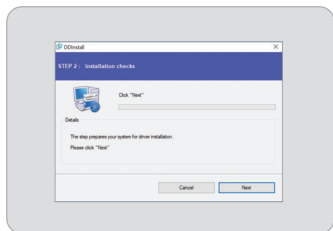
3. If "User Account Control" window is opened, click "Yes".

※ Depending upon your computer's settings, you may be prompted to supply local admin credentials to authorize the installation of the driver.

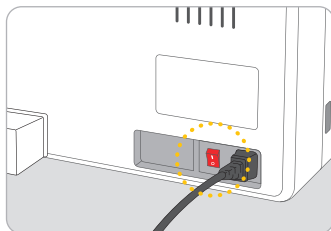


4. To change the language from the default English to something else click "Next".

This step may take a few moments to process.



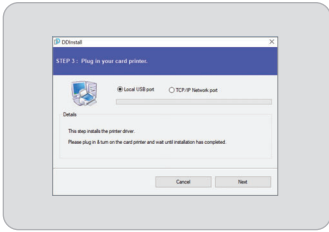
5. Click "Next" to install the printer driver package in STEP 2.



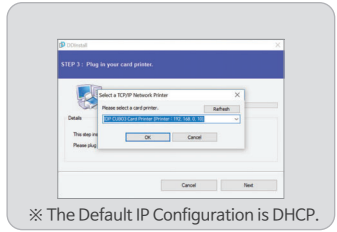
6. Connect the USB cable to PC and turn on the printer by pressing the On/Off button at the indicated point.



Connect the USB Cable to the computer before Power on the printer.

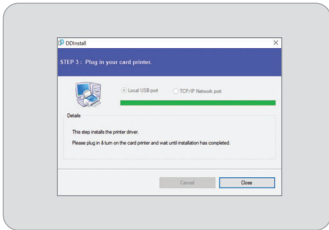


7. In case of USB connection, click “Next” and move to Step 9.  
If you are planning on setting up the SMART-81 as a network device, please proceed to Step 8.

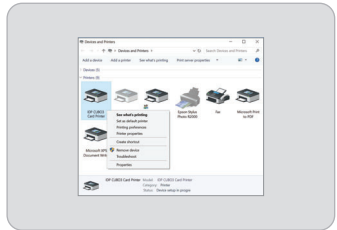


※ The Default IP Configuration is DHCP.

8. Search SMART-81 Card Printer connected on the network. Click “OK” after selecting and click “Next”.  
If the printer is not found, Please configure network setting by referring to “User Manual”.

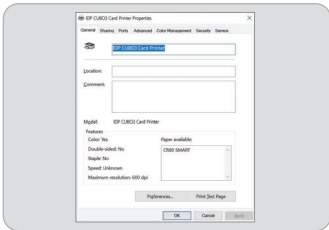


9. Click “Close” after installation has completed.

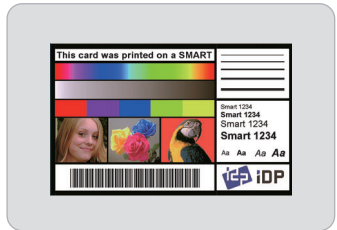


10. Access Windows Control Panel and select Devices and Printers.  
Right click “IDP SMART-81 Card Printer” and select “Printer Properties”.

※ Some Windows10 installations access printer configurations in Scanners and Printers in Windows Control Panel.



11. Select the “General” tab and click “Print Test Page” to print Test Card.



12. Compare the printed Test Card with the image above.



### **FCC Compliance Statement**

This device complies with part 15 of the FCC rules. Operation is subject to the following two conditions: (1) This device may not cause harmful interference, and (2) this device must accept any interference received, including interference that may cause undesired operation.

### **FCC Interference Statement**

This equipment has been tested and found to comply with the limits for a Class B digital device, pursuant to part 15 of the FCC Rules. These limits are designed to provide reasonable protection against harmful interference in a residential installation. This equipment generates, uses and can radiate radio frequency energy and, if not installed and used in accordance with the instructions, may cause harmful interference to radio communications. However, there is no guarantee that interference will not occur in a particular installation. If this equipment does cause harmful interference to radio or television reception, which can be determined by turning the equipment off and on, the user is encouraged to correct the interference by one of the following measures:

- Reorient or relocate the receiving antenna.
- Increase the separation between the equipment and receiver.
- Connect the equipment into an outlet on a circuit different from which the receiver is connected.
- Consult the dealer or an experienced radio/TV technician for help.

### **FCC Caution**

Any changes or modifications not expressly approved by the party responsible for compliance could void the user's authority to operate this equipment. This transmitter must not be co-located or operating in conjunction with any other antenna or transmitter.

### **RFID(13.56MHz) Usage**

The RFID Tag is used for the security and the recognition of the ribbon. To get the optimized printing quality on the printed card, the genuine ribbon of IDP should be used to print cards by using SMART printer. SMART printer can recognize the genuine ribbon by reading the encoded information on the RFID Tag of the ribbons. To support user's various requirements for printing cards appropriately, many kinds of ribbons should be provided and SMART printer should distinguish the type of installed ribbon. To distinguish the installed ribbon type correctly, SMART printer reads the encoded information on the RFID Tag of the ribbons. According to the installed ribbon type and the ribbon supplier, the printer driver of SMART printer can select the color profile and create the printing data.

# Specifications

Model		SMART-81	SMART-81H
Printing	Print Type	Dye-Sublimation / Resin Thermal Retransfer	
	Print Area	Single or Dual-sided / Over-the-Edge on CR80 cards	
Card	Resolution	300dpi	600dpi
	Card Feeding	Automatic	
	Card Size	ISO CR80	
	Card Thickness	0.76mm (30mil) ~ 1.2mm (47mil)	
	Card Type	PVC, PC, PET, Composite PVC	
	Print Speed	YMCK	30 sec./card (120 cards/hour)
YMCKK		48 sec./card (75 cards/hour)	
Capacity	Input Hopper	200 Cards	
	Output Hopper	100 Cards	
	Error card bin	25 Cards	
System	Display & Control Panel	2 Line Graphic LCD Indicator / 4 Buttons	
	Supported Platforms	Microsoft Windows 7/ 8 /10 /11, Mac OS, Linux	
	Communication	USB, Ethernet	
	Power Supply / Consumption	Free Voltage (AC 100-240V, 50-60Hz) / 2.5A	
	Temperature / Humidity	-20~50°C / 35~70%	
Dimensions	WxDxH (Millimeter / Inch)	460 x 224 x 310 / 18.1 x 8.8 x 12.2	
	Kg/lbs	11.4 / 25.13	
Options	Encoding	Magnetic stripes : ISO 7811 (Track I, II, III Read/ Write, HiCo/ LoCo), JIS II Contact : ISO 7816 (ID-1) Contactless : MIFARE, ISO 14443 (Type A/ B), ISO 15693, DESFIRE, iCLASS	
	Option	Bend Remedy	
	Security	Physical & Electronic Locking System / WiFi	

## IDP Corp., Ltd.

#601, 50, Digital-ro 33-gil,  
Guro-gu, Seoul, Korea,  
08377

**T** +82-2-6099-3700

**F** +82-2-6099-3717

**E** sales@idp-corp.com

## IDP Americas, Inc.

1485 S County Trail, Unit 306  
East Greenwich, RI 02818  
USA

**T** +1-401-400-7111

**F** +1-401-667-7445

**E** sales@idpamericas.com

## IDP Middle East

13F, Jafza View 18, Downtown  
Jebel Ali P.O.Box 17588,  
Dubai U.A.E.

**T** +971-4-889-5900

**E** mea@idp-corp.com