

FCC ID: VTLGM-700  
This device complies with Part 15 of the FCC Rules.  
Operation is subject to the following two conditions:  
(1) This device may not cause harmful interference, and  
(2) This device must accept any interference received,  
including interference that may cause undesired operation.  
IC: 10480-CM700  
This Class B digital device complies with Canadian ICES-003



警告:カバーをはずさないでください。  
△WARNING: Do not remove cover!  
△WARNUNG: Nimm das Gehäuse nicht ab!





100 FEET

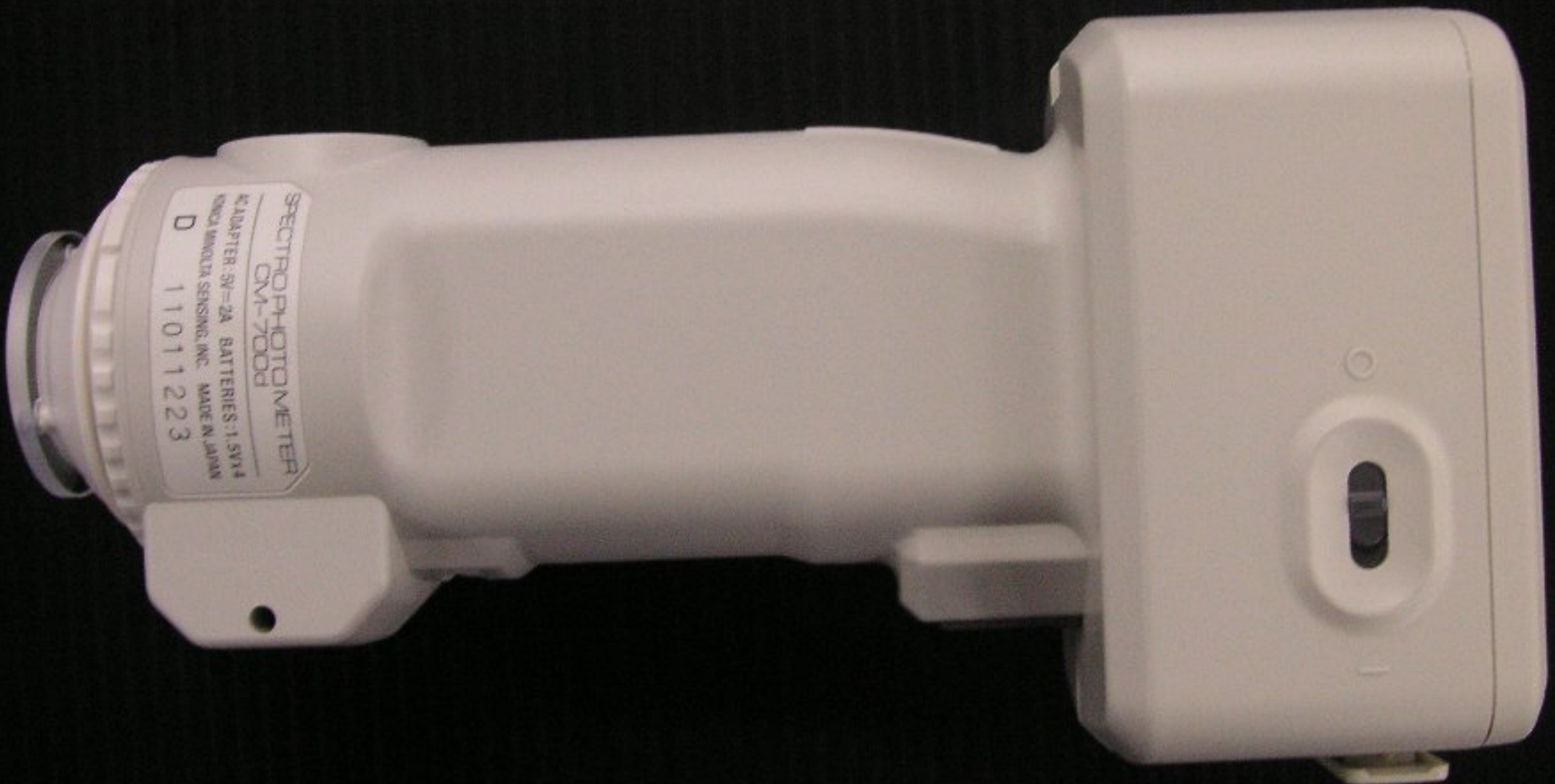
SAV  
MAV

MEAS

SAV

MAV



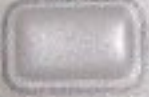


SPECTROPHOTOMETER  
CM-7000d  
ADAPTER: SV-2A BATTERIES: 1.5Vx4  
KINCA MINOLTA SENSING, INC. MADE IN JAPAN  
D 11011223

KONICA MINOLTA



SAMPLE



TARGET



SAVE  
SEL



CAL



MENU

OPTION  
READY

