

11N USB Quick Installation Guide

Product Name: Wireless Lan Card

Model No.: WL03U, (WL04U)

FCC ID: VTI WL03U04U

A: Install elucidation: "The CD installs a method" belongs to general use installs method, concretely as follows:

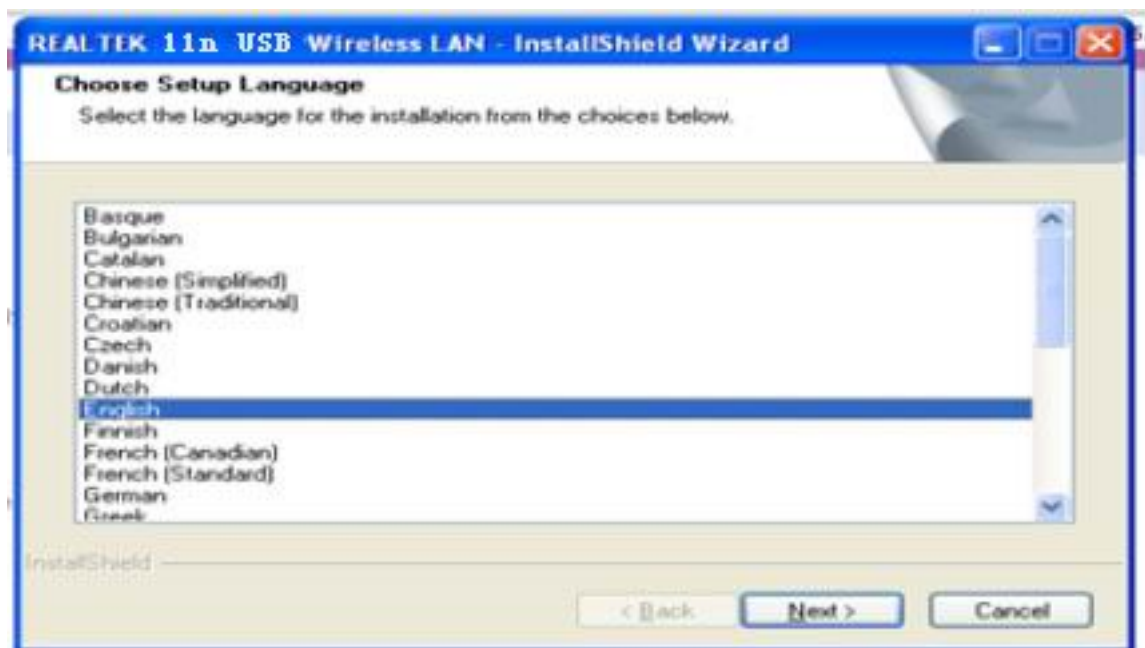
1、Before device installation, please install the software from the CD, Click on the “Setup exe” link to begin the installation. (Figure 1)



(Figure 1)

Quick Installation Guide

2、 The Setup Program will detect automatically the install drivers and correct software by itself. The customer is according to "drive to install a guide to carry on to gradually install ".
(Figure 2, 3,4)



(Figure 2)

Quick Installation Guide



(Figure 3)



(Figure 4)

Quick Installation Guide

3、 Click on “Finish”. The setup is already done.

4、 Please, restart your computer and when Windows is loaded, insert the USB Adapter into an empty USB slot of your computer. (Figure 5)



(Figure 5)

B: OPERATION MODES:

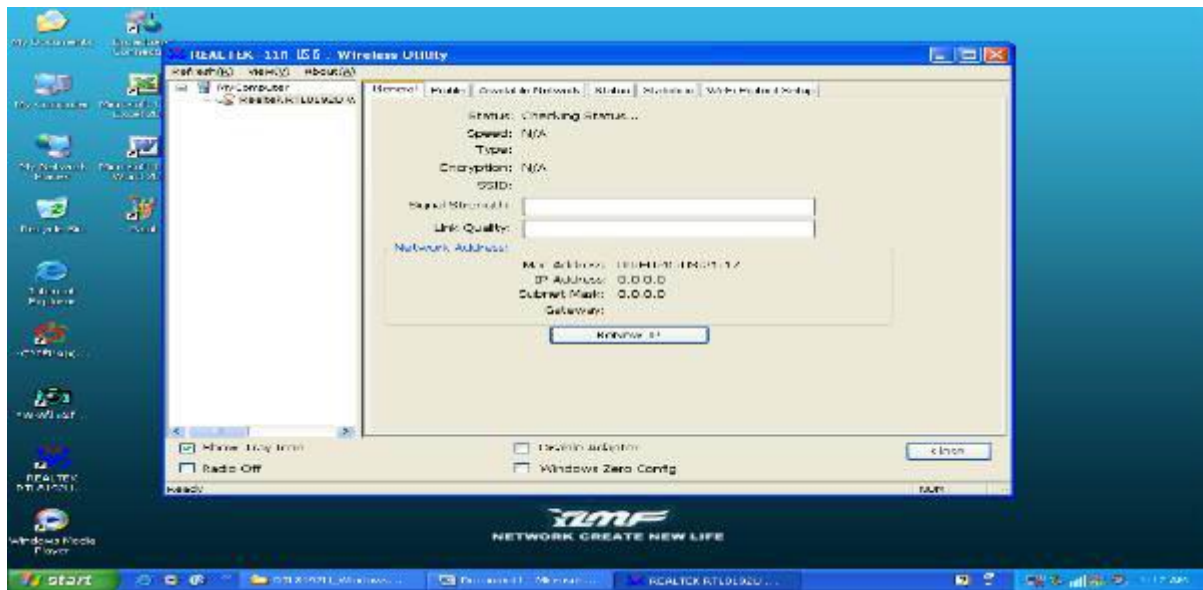
1、 When the wireless net card drives allocation completion, this icon right the table's top in computer is appear as follows a diagram mark .(Figure 6)



(Figure 6)

2、 click that diagram mark will be appear as follows interface, (figure 7)

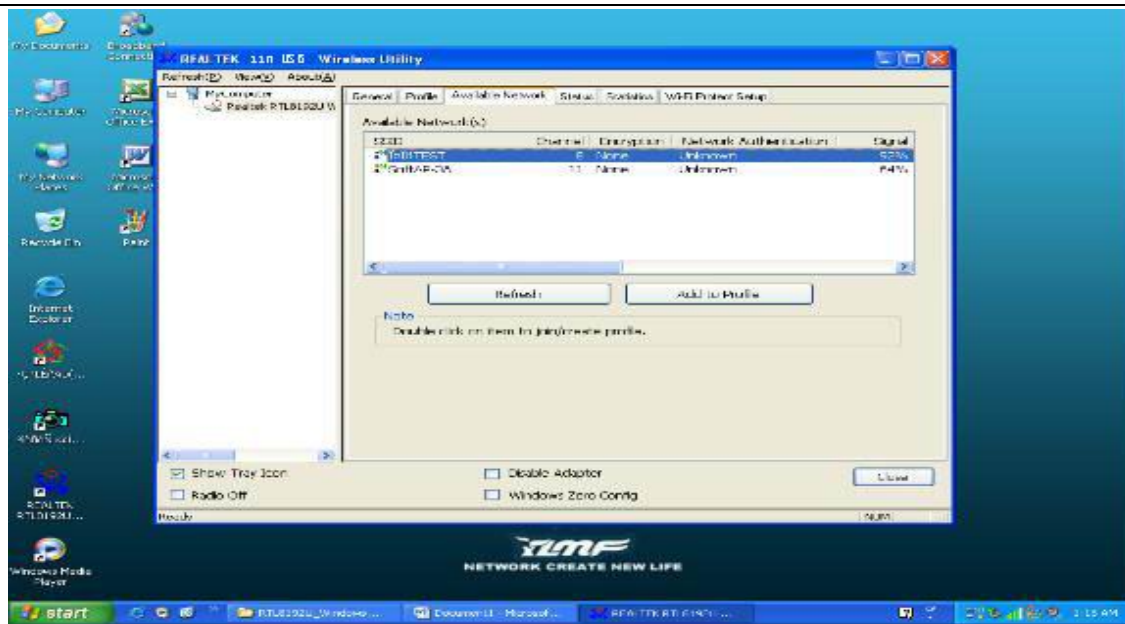
Quick Installation Guide



(Figure 7)

2、 Choose a “Network” item, then click a “Rescan” options, the net card will search and can use a network and as follows the diagram show: (Figure 8)

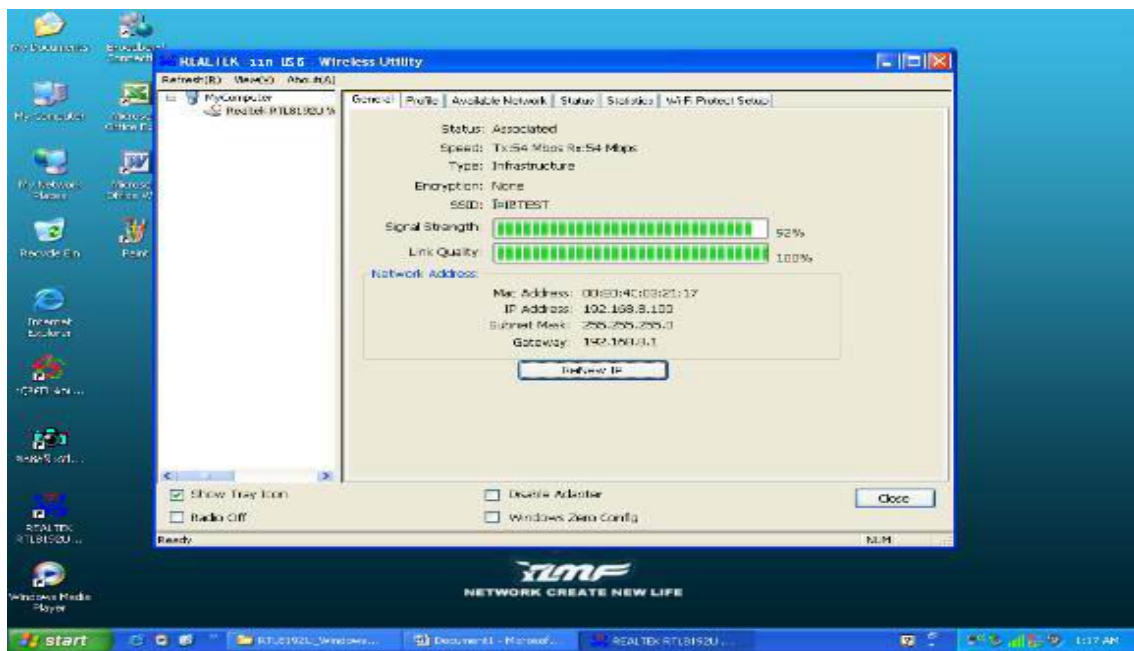
Quick Installation Guide



(Figure 8)

3、First, choice demand of wireless network, Then click a “Connect” options, the wireless network connects a chain success, and will be appear as follows interface .(figure 9)

Quick Installation Guide



(Figure9)

C: SECURITY OPTIONS:

- 1、WEP: If the other wireless device has this function activated, ask the WLAN Administrator to get the key password. Think about the type and size of the password (Hex or ASCII and 64/128 bit)
- 2、WPA: If the other wireless device has this function activated, ask the WLAN Administrator to get the key password.

The whole allocation process has been already complete.

D: Caution

1、FCC Caution

This device complies with part 15 of the FCC rules.

Quick Installation Guide

Operation is subject to the following two conditions:

(1) this device may not cause harmful interference, and

(2) this device must accept any interference received, including interference that may cause undesired operation of the device.

2、RF warning statement:

The device has been evaluated to meet general RF exposure requirement. The device can be used in portable exposure condition without restriction.

E: Statement

changes or modifications not expressly approved by the party responsible for compliance could void the user's authority to operate the equipment.

NOTE: This equipment has been tested and found to comply with the limits for a Class B digital device, pursuant to Part 15 of the FCC Rules. These limits are designed to provide reasonable protection against harmful interference in a residential installation. This equipment generates, uses and can radiate radio frequency energy and, if not installed and used in accordance with the instructions, may cause harmful interference to radio communications. However, there is no guarantee that interference will not occur in a particular installation. If this equipment does cause harmful interference to radio or television reception,

Quick Installation Guide

which can be determined by turning the equipment off and on, the user is encouraged to try to correct the interference by one or more of the following measures:

- Reorient or relocate the receiving antenna.
- Increase the separation between the equipment and receiver.
- Connect the equipment into an outlet on a circuit different from that to which the receiver is connected.
- Consult the dealer or an experienced radio/TV technician for help.