

Regulatory WLAN Antenna Information (Template)

English Language Required for Intel Regulatory Review / Approval

(OEM/ODM or antenna vendor is required to complete this document with platform antenna information.

Remove Intel references and make this your own document)

Platform information										
Brand	ODM	****End product model name	Intel platform (ex: Yes, No or NA)	Platform type (ex: regular NB, convertible PC, AIO...etc)	*SAR minimum separation (mm)					
Juniper Systems	Juniper Systems	ST1	Yes	Tablet PC	0					
****Please fill in exact product model name and make sure the model name is visible on product cover or any parts for end users recognize for authority inspection.										
Antenna information										
Vendor	Type	Antenna Part number (Main)			Antenna Part number (Aux)					
Juniper Systems	PIFA	29552			29554					
Peak gain w/ cable loss (dBi)*										
	2.4GHz 2400-2483.5 MHz	5.2GHz 5150-5250MHz	5.3GHz 5250-5350MHz	5.6GHz 5470-5725MHz	5.8GHz 5725-5850MHz	6.2GHz 5925-6425MHz	6.5GHz 6425-6525MHz	6.7GHz 6525-6875MHz	7.0 GHz 6875-7125MHz	
Main	3.1	3.0	3.4	1.5	1.1	n/a	n/a	n/a	n/a	
Aux	2.8	2.4	2.7	1.1	0.0	n/a	n/a	n/a	n/a	
Intel Reference Gain/Type/ Separation distance										
Antenna Type	Antenna Peak gain (In dBi)*									Distance to the end user (mm)
	2.4GHz 2400-2483.5 MHz	5.2GHz 5150-5250MHz	5.3GHz 5250-5350MHz	5.6GHz 5470-5725MHz	5.8GHz 5725-5850MHz	6.2GHz 5925-6425MHz	6.5GHz 6425-6525MHz	6.7GHz 6525-6875MHz	7.0GHz 6875-7125MHz	
Design	3.00	5.00	5.00	5.00	5.00	5.00	5.00	5.00	5.00	Generic: refer to modular FCC SAR report Mid-power: ≥ 8 mm Low power: ≥ 5 mm
PIFA	3.24	3.64	3.73	4.77	4.97	4.83	4.30	5.37	5.59	
Dipole	2.89	2.92	3.19	4.41	4.22	4.83	4.30	4.49	5.34	
Notes (marked with *)										
* SAR minimum separation (mm)										
- Regular NB: Minimum antenna-to-body (from antenna bottom to the bottom of the device)										
- Tablet / Convertible PC: Minimum antenna-to-edge (5 sides of the device)										
- Mini-tablet: Minimum antenna-to-edge (6 sides of the device)										
* 3D Peak Antenna gain should be equal or greater than -2 dBi										
- If a host integrator plans to use a lower gain antenna of the same type, additional CBP(FCC)/EDT(EU) testing need to be performed while the module is installed in the host.										

Antenna Sample / Antenna Data

Requirements for worldwide regulatory approval

Section	Description of Required OEM / ODM Antenna Information	US / IC	EU	Japan	Taiwan	S. Korea
1A	Part Number for Antenna only	Required	Required	Required	Required	Required
1B	Antenna Manufacturer Name	Required	Required	Required	Required	Required
1C	Description of Antenna Type	Required	Required	N/A	N/A	N/A
1D	Part number of Antenna Assembly / cable impedance, length & diameter.	Required	Optional	Optional	Optional	Optional
1E	Main & Aux antenna (Peak Gain W/ cable loss) *	Required	Required	Required	Required	Required
1E OR 1F, 1G, 1H						
1F	Main & Aux antenna (Peak Gain only) *	Required	Required	Required	Required	Required
1G	VSWR of cable including connector	Required	Required	Required	Required	Required
1H	Main & Aux antenna (Cable loss W/ connector) *	Required	Required	Required	Required	Required
2	Dimensioned Photographs and Drawings of Main & Aux antennas	Required	Required	Required	Required	Required
3	Radiation patterns of antennas loaded in the host platform.	Required	Optional	Required	Required	Required
4	Platform model name / number - correlated to antenna manufacturer and antenna part number	Required	Required	Optional	Required	Optional
5	Photograph(s) or Drawings showing location of antennas in platform. <u>(S. Korea requires photographs of antennas for approval submission). Taiwan requires pictures of each antenna type shown in the system.</u>	Required	Required	Optional	<u>Required (Photos)</u>	<u>Required (Photos)</u>
6	Mech. drawings / photos with dimensions of antenna locations and distance from end-user (For evaluation of SAR testing requirement).	Required	N/A	N/A	N/A	N/A
7	Photograph(s) or Drawings showing the location of all antennas (WLAN, other) and distance between those transmitting antennas. Information will be used to evaluate whether co-location testing is required.	Required	N/A	N/A	N/A	N/A
8	Local representative contact information for LMA/ PARS process.	Required	N/A	N/A	N/A	N/A
9	Antenna gain range should be equal or greater than -2 dBi. (2.4/5/6GHz: EU, 6GHz: FCC)	Required	Required	N/A	N/A	N/A

Antenna Information

Section 1. Antenna Assembly Specifications

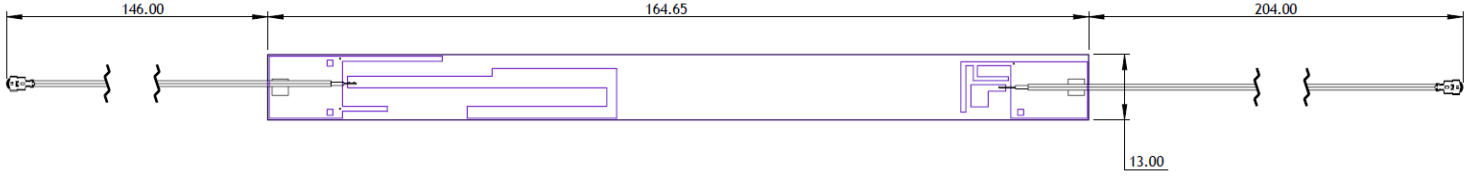
1A Antenna Part Number	1B Manufacturer	1C Antenna Type	1D Cable Assembly Part Number and Information	Freq Range MHz	1E * Peak Gain W/ Cable loss (dBi)	1F Peak Gain w/o Cable Loss (dBi)	1G Max VSWR	1H Cable Loss (dB)
(P/N: 29552) Main Antenna	Juniper Systems	PIFA	Part of antenna assembly	2400-2483.5	3.1			
				5150-5250	3.0			
				5250-5350	3.4			
				5470-5725	1.5			
				5725-5850	1.1			
				5925-6425	n/a			
				6425-6525	n/a			
				6525-6875	n/a			
				6875-7125	n/a			
(P/N: 29554) Aux Antenna	Juniper Systems	PIFA	Part of antenna assembly	2400-2483.5	2.8			
				5150-5250	2.4			
				5250-5350	2.7			
				5470-5725	1.1			
				5725-5850	0.0			
				5925-6425	n/a			
				6425-6525	n/a			
				6525-6875	n/a			
				6875-7125	n/a			

- 3D Antenna Peak Gain required being test in system basis.

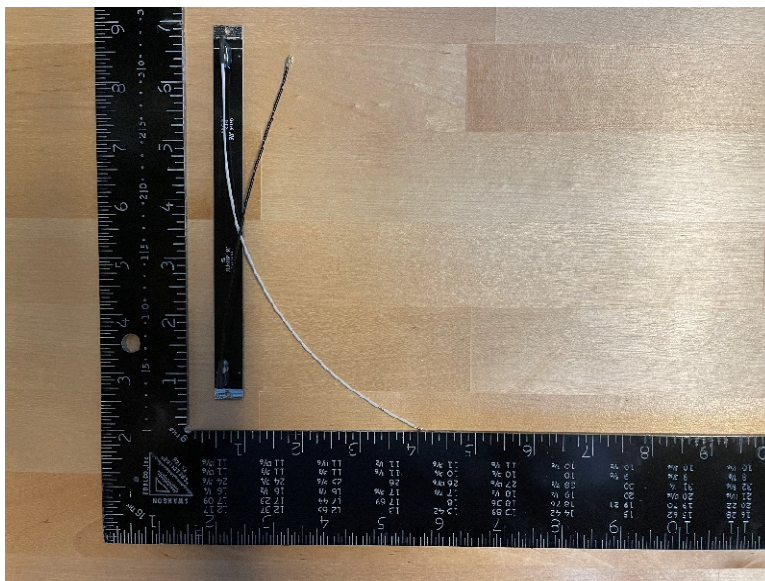
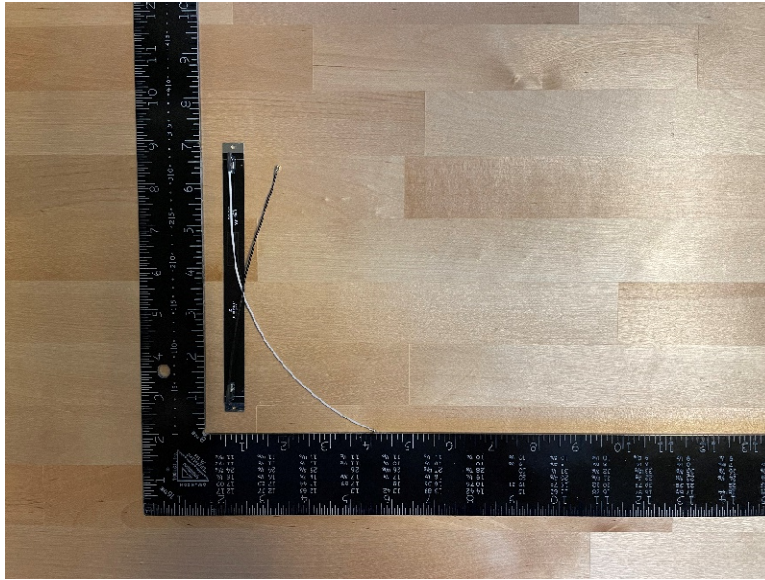
Section 2. Dimensioned Photos or Drawings of Antennas

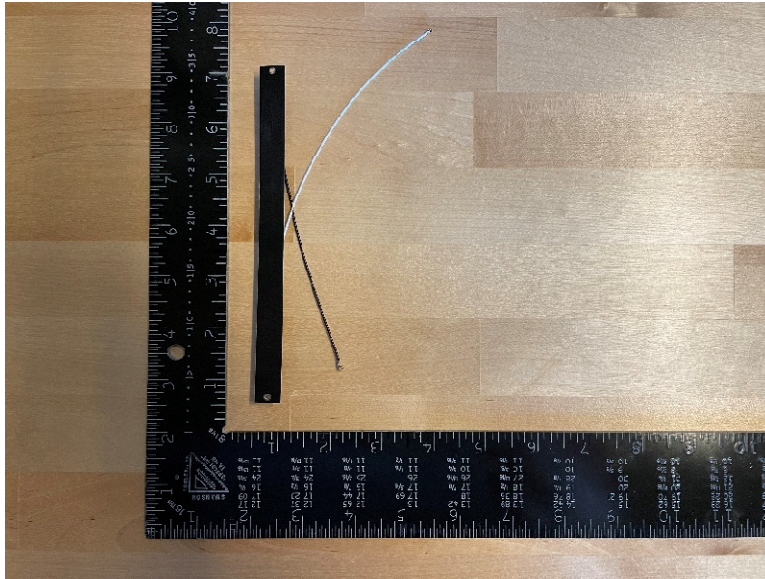
Include a dimensioned photo and dimensioned drawing of Main antenna here.

Main Antenna Dimensioned Drawing:



Main Antenna Photo (Front/Back):





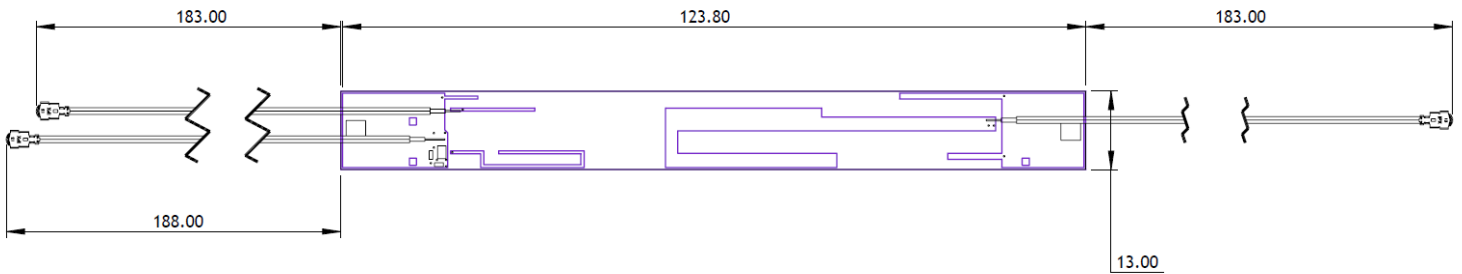
Antenna Manufacturer: Juniper Systems

Antenna Part Number: 29552 (Main), 29554 (Aux)

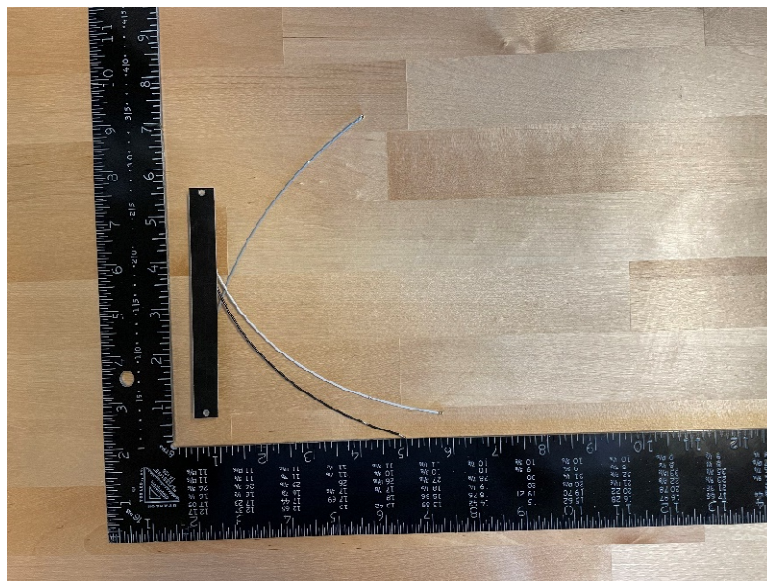
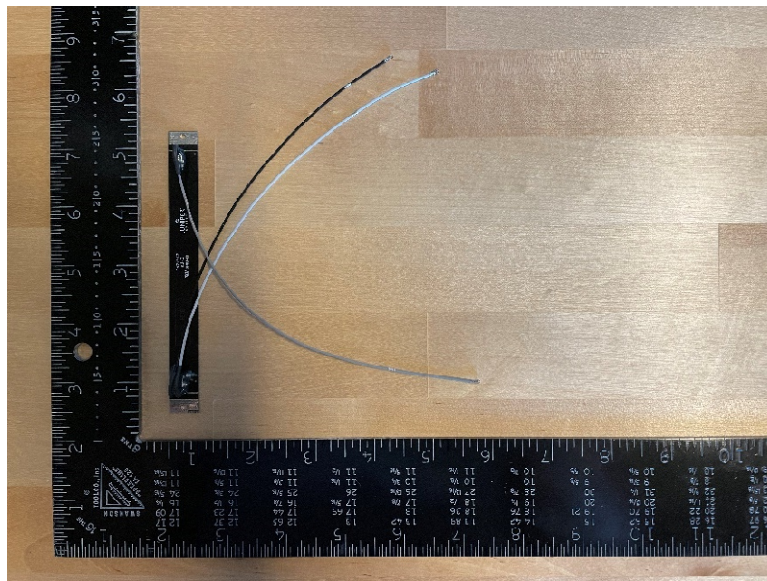
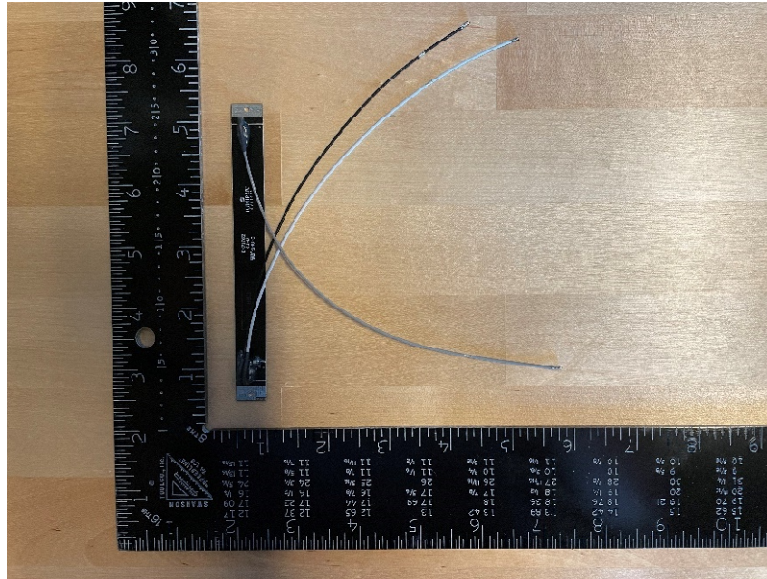
Note: antenna photo should include L type ruler

Include a dimensioned photo and dimensioned drawing of Aux antenna here.

Aux Antenna Dimensioned Drawing:



Aux Antenna Photo (Front/Back):



Antenna Manufacturer: Juniper Systems

Antenna Part Number: 29552 (Main), 29554 (Aux)

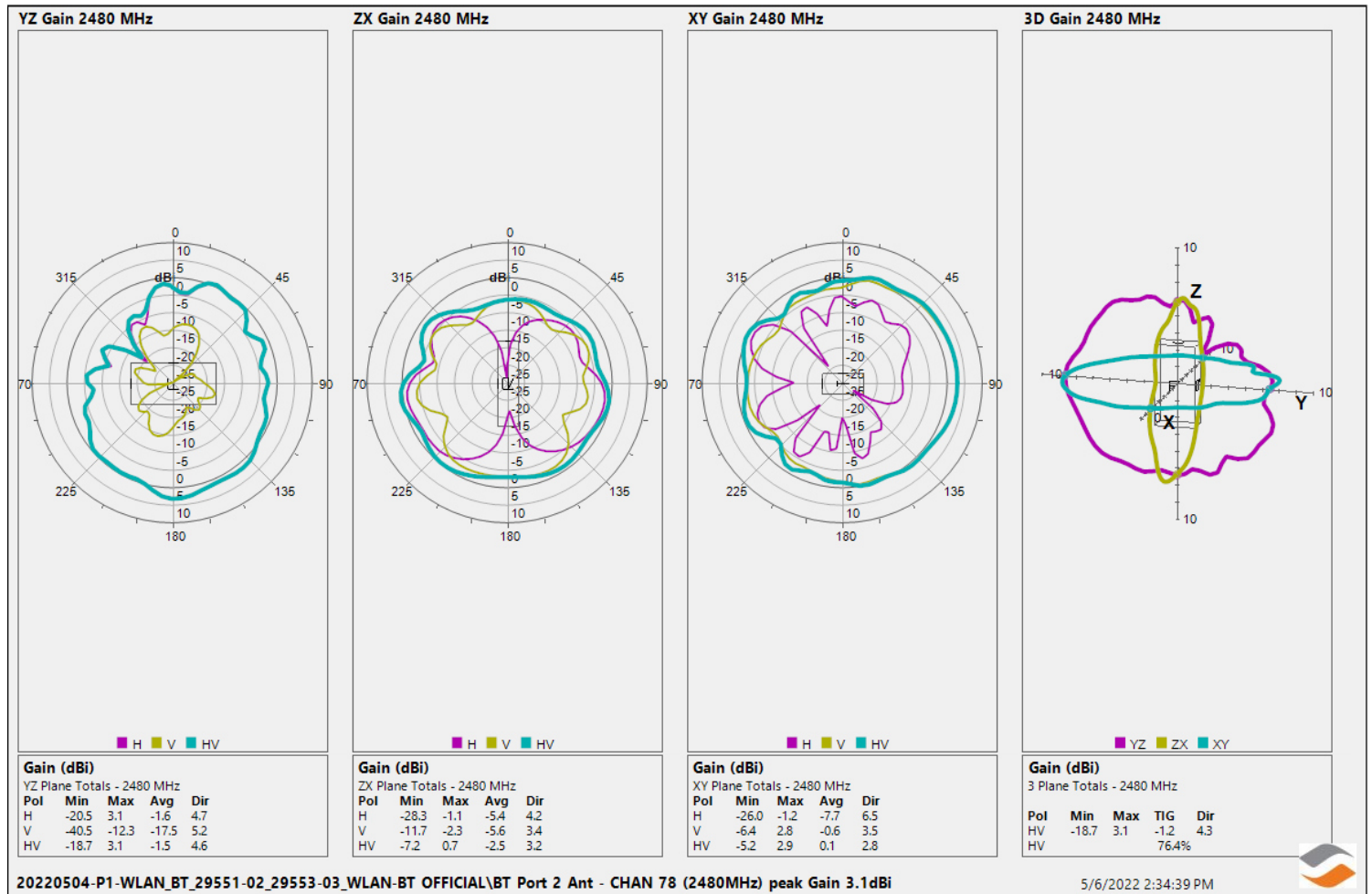
Note: antenna photo should include L type ruler

Section 3. Radiation characteristics of antenna loaded in Host Platform

Main Antenna

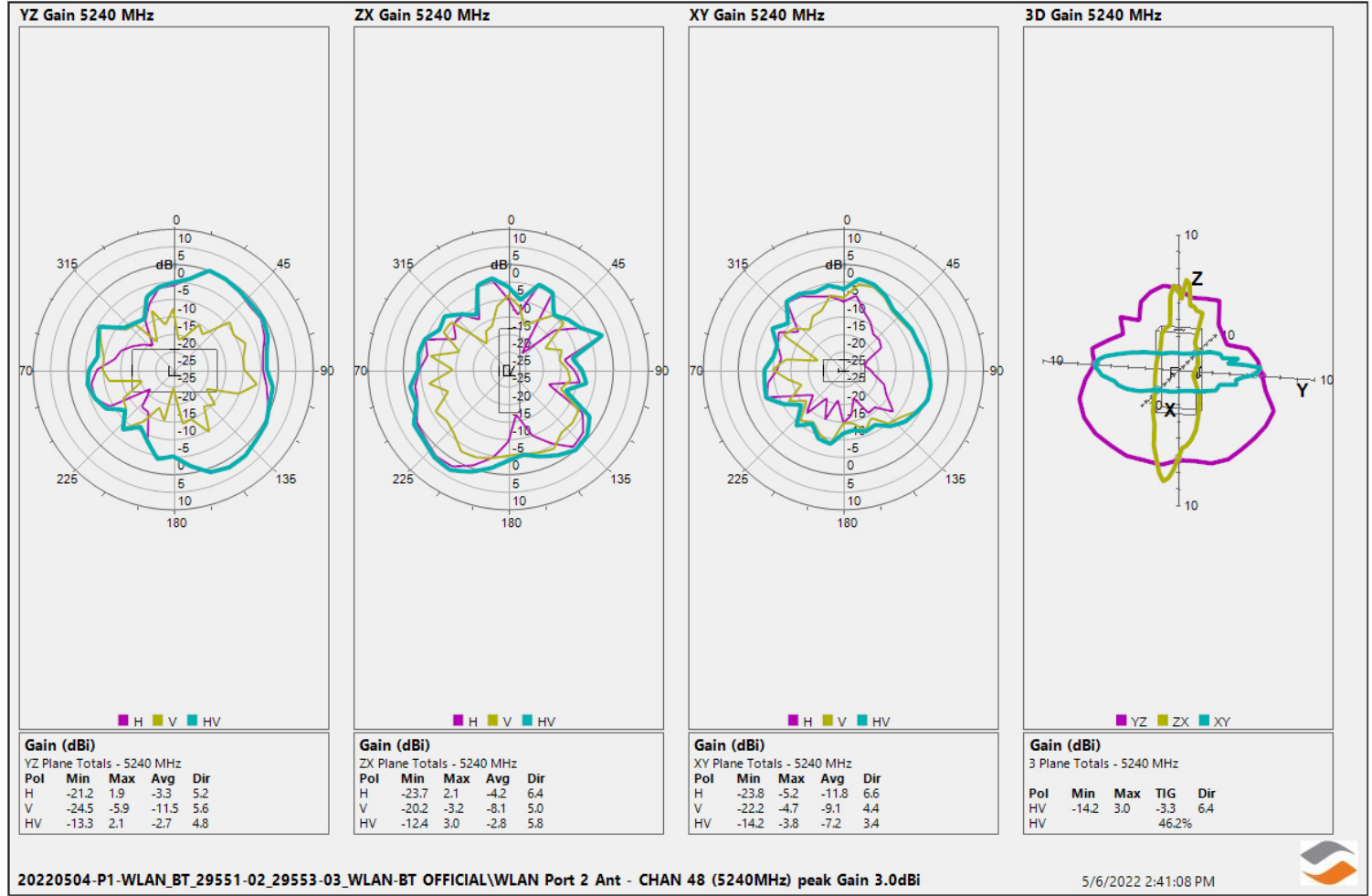
Max Antenna 3D Radiation Pattern 2400 – 2483.5 MHz

Frequency (MHz)	Peak Gain w/ Cable Loss (dBi)
2400-2483.5	3.1



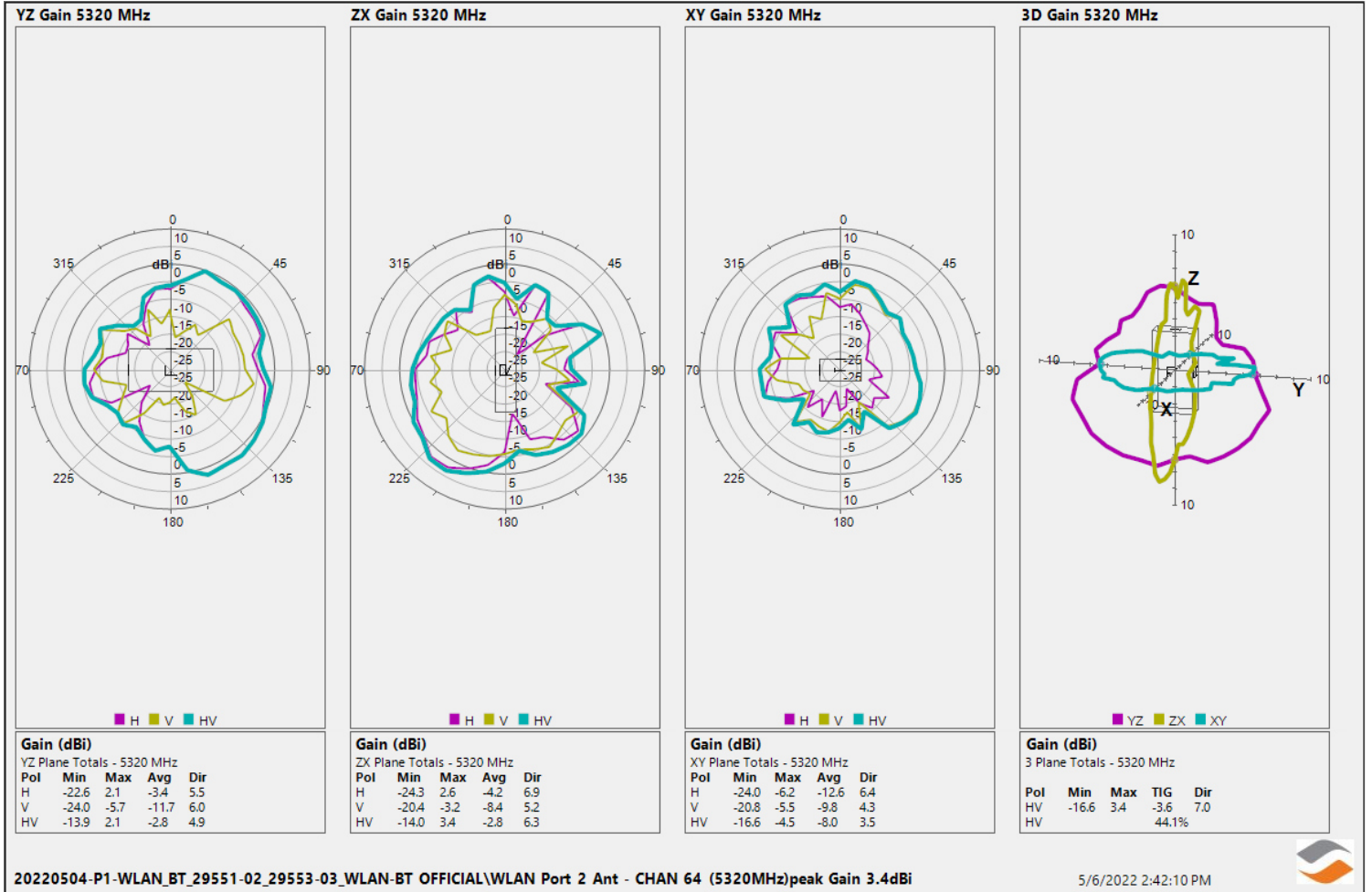
Max Antenna 3D Radiation Pattern 5150-5250 MHz

Frequency (MHz)	Peak Gain w/ Cable Loss (dBi)
5150-5250	3.0



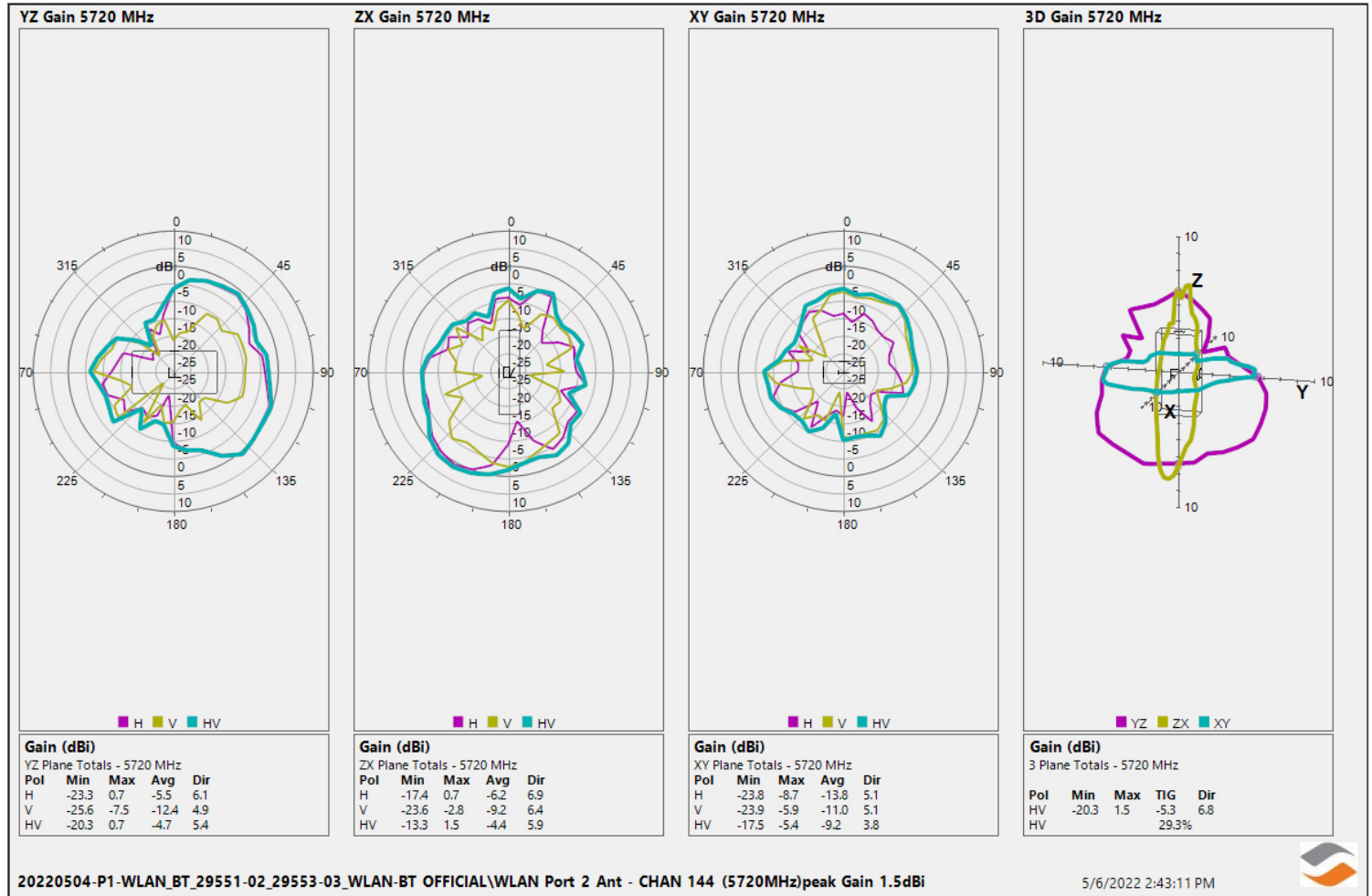
Max Antenna 3D Radiation Pattern 5250-5350 MHz

Frequency (MHz)	Peak Gain w/ Cable Loss (dBi)
5250-5350	3.4



Max Antenna 3D Radiation Pattern 5470-5725 MHz

Frequency (MHz)	Peak Gain w/ Cable Loss (dBi)
5470-5725	1.5



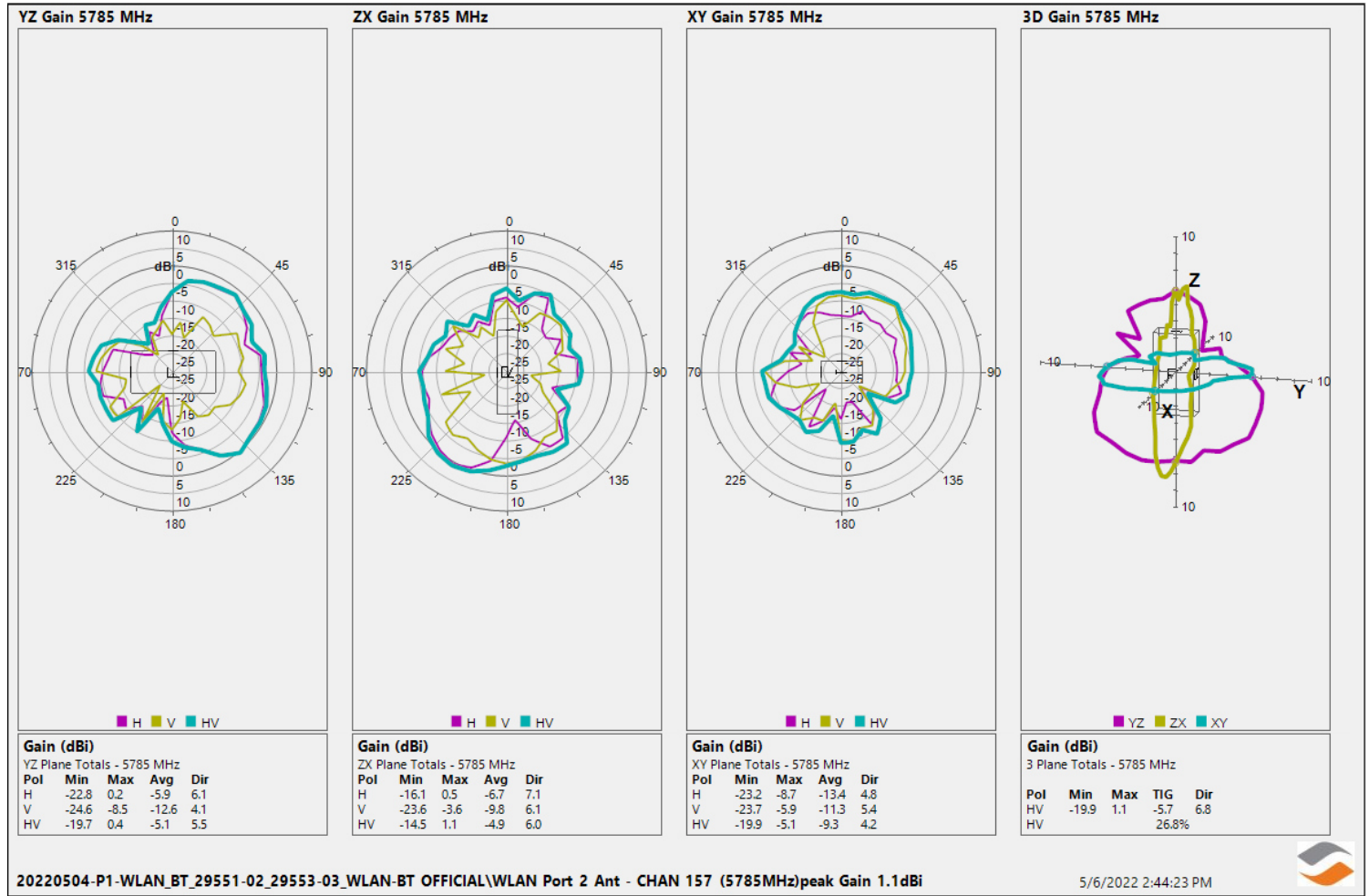
20220504-P1-WLAN_BT_29551-02_29553-03_WLAN-BT OFFICIAL\WLAN Port 2 Ant - CHAN 144 (5720MHz)peak Gain 1.5dBi

5/6/2022 2:43:11 PM



Max Antenna 3D Radiation Pattern 5725-5850 MHz

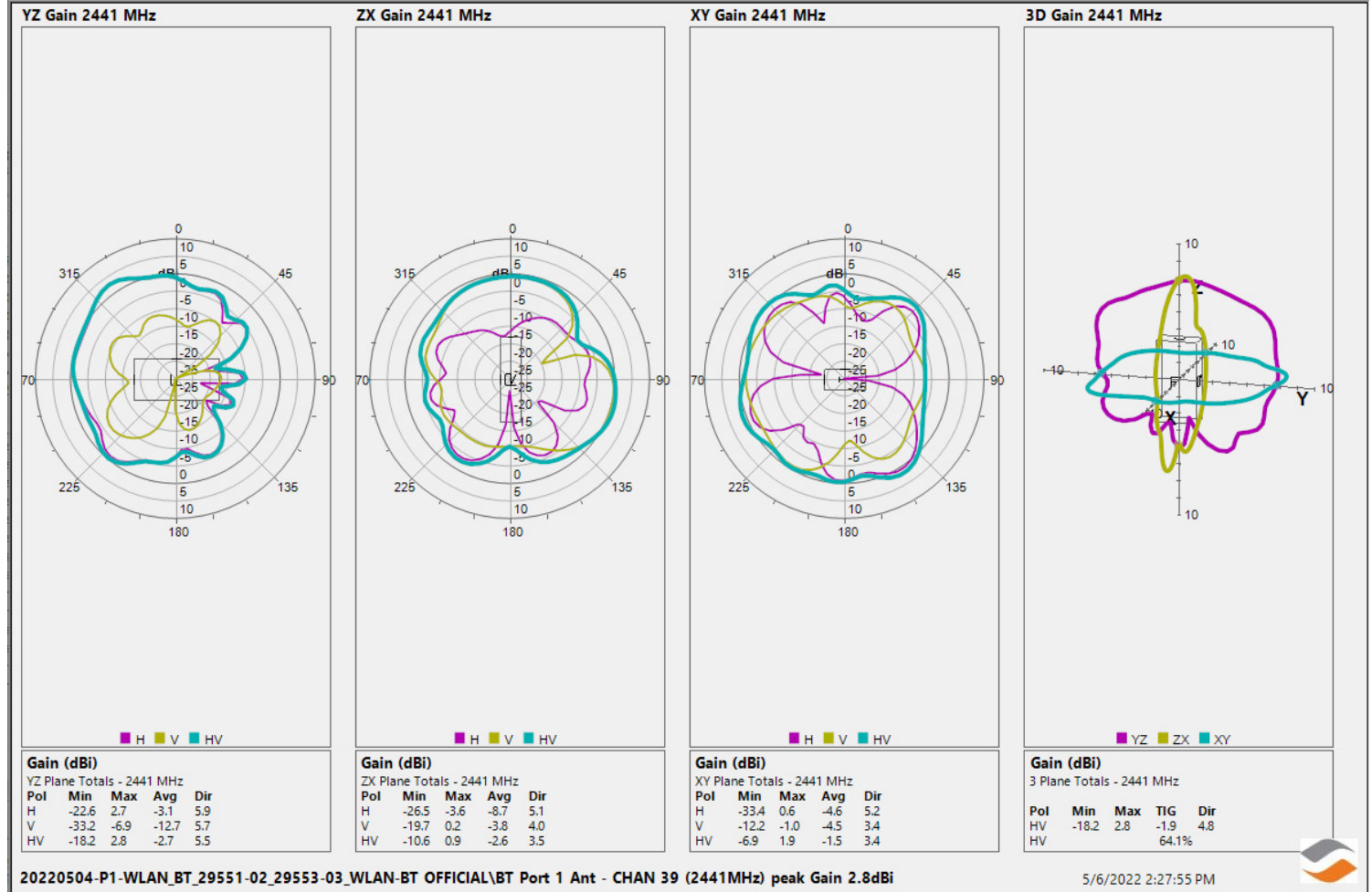
Frequency (MHz)	Peak Gain w/ Cable Loss (dBi)
5725-5850	1.1



Auxiliary Antenna

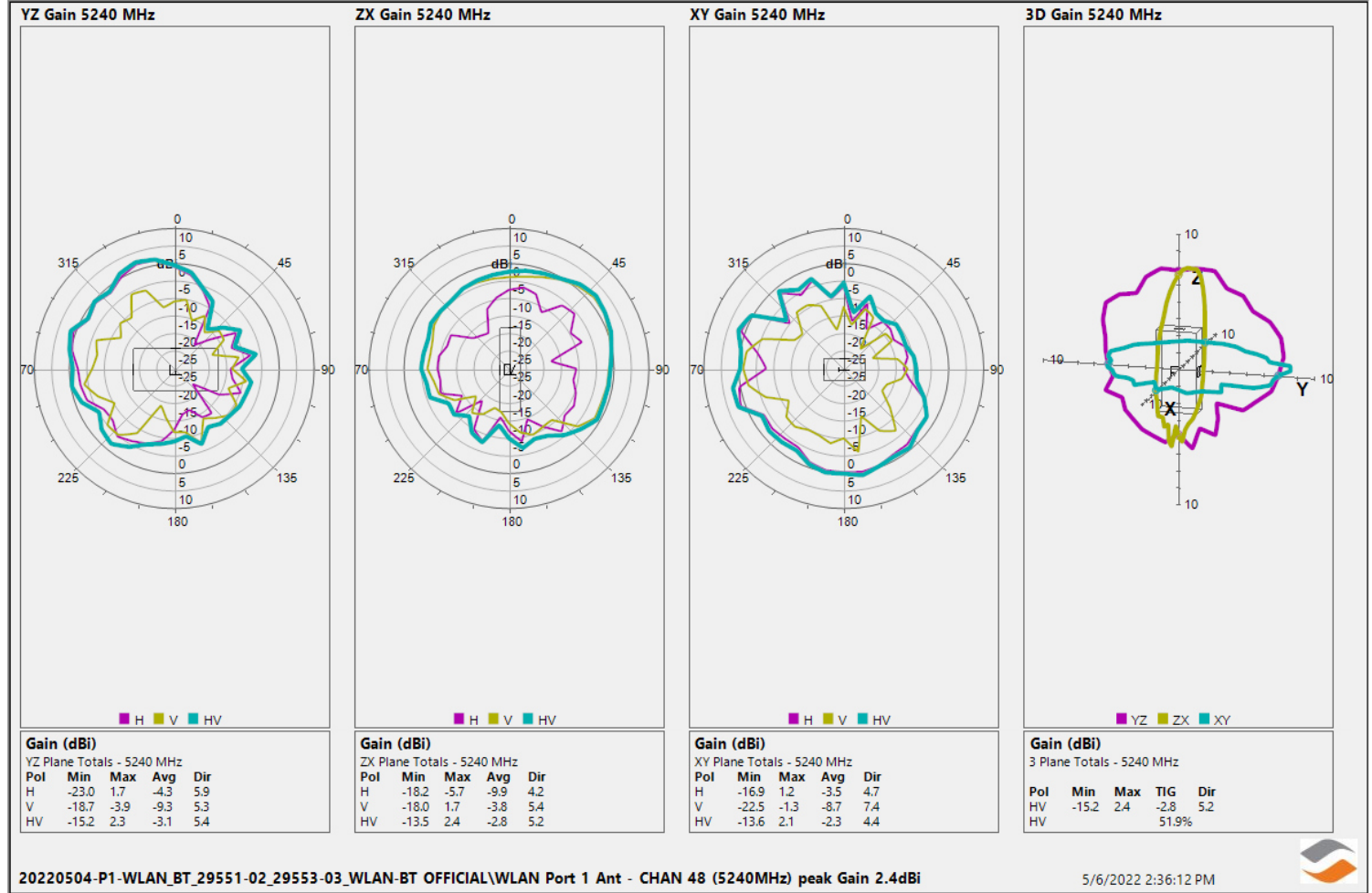
Aux Antenna 3D Radiation Pattern 2400 – 2483.5 MHz

Frequency (MHz)	Peak Gain w/ Cable Loss (dBi)
2400-2483.5	2.8



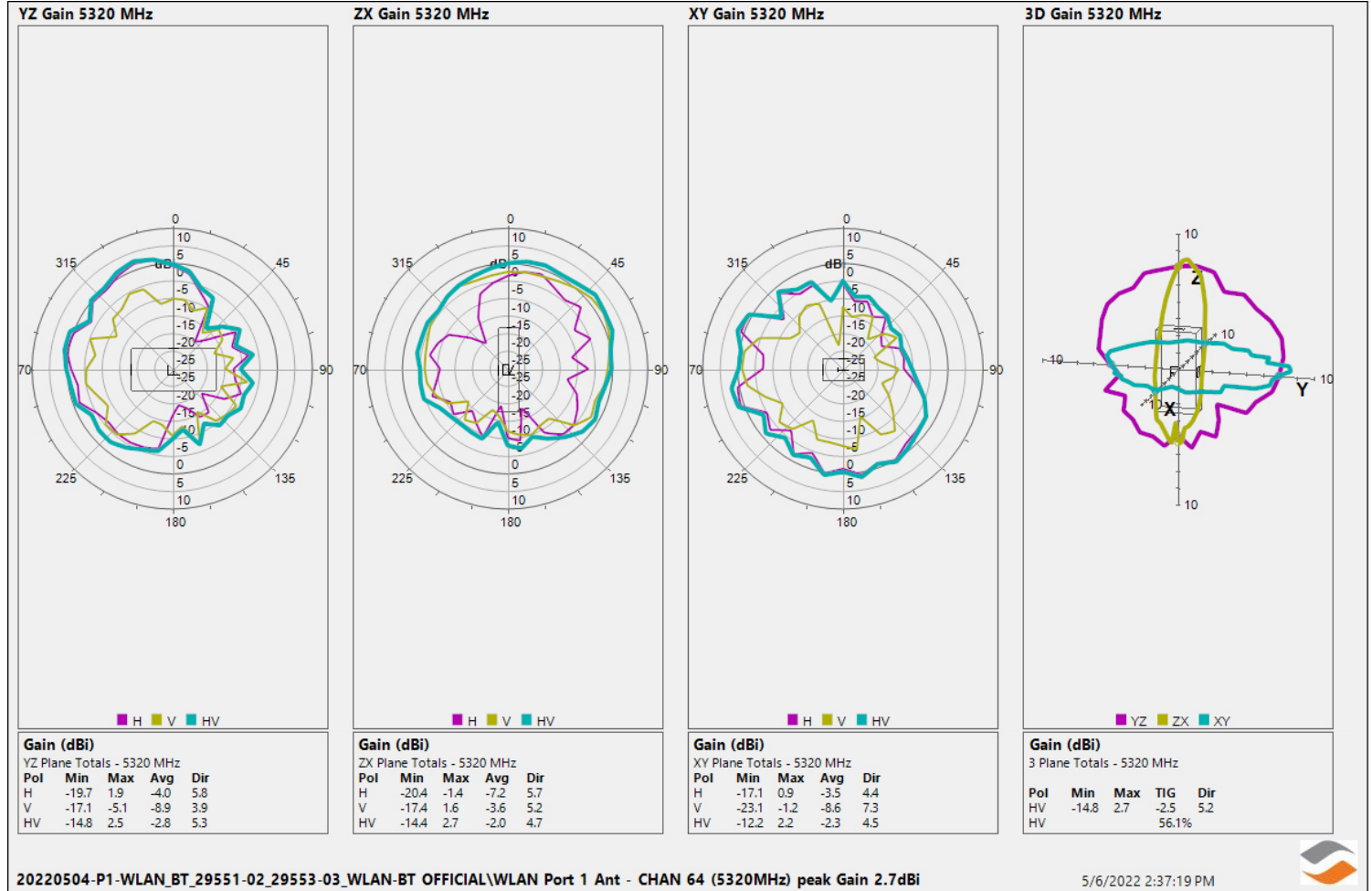
Aux Antenna 3D Radiation Pattern 5150-5250 MHz

Frequency (MHz)	Peak Gain w/ Cable Loss (dBi)
5150-5250	2.4



Aux Antenna 3D Radiation Pattern 5250-5350 MHz

Frequency (MHz)	Peak Gain w/ Cable Loss (dBi)
5250-5350	2.7



20220504-P1-WLAN_BT_29551-02_29553-03_WLAN-BT OFFICIAL\WLAN Port 1 Ant - CHAN 64 (5320MHz) peak Gain 2.7dBi

5/6/2022 2:37:19 PM

