

*Figure 5*  
*General Appearance (Stand, DC Out Cable and DC In Port)*



*Figure 6*  
*General Appearance (Bottom View)*



## EUT Internal Photos

*Figure 7*  
*General Appearance (I/O Ports View)*



*Figure 8*  
*Internal View (Stand, Removed Cover)*



Figure 9  
Internal View (LED Board, Front View)

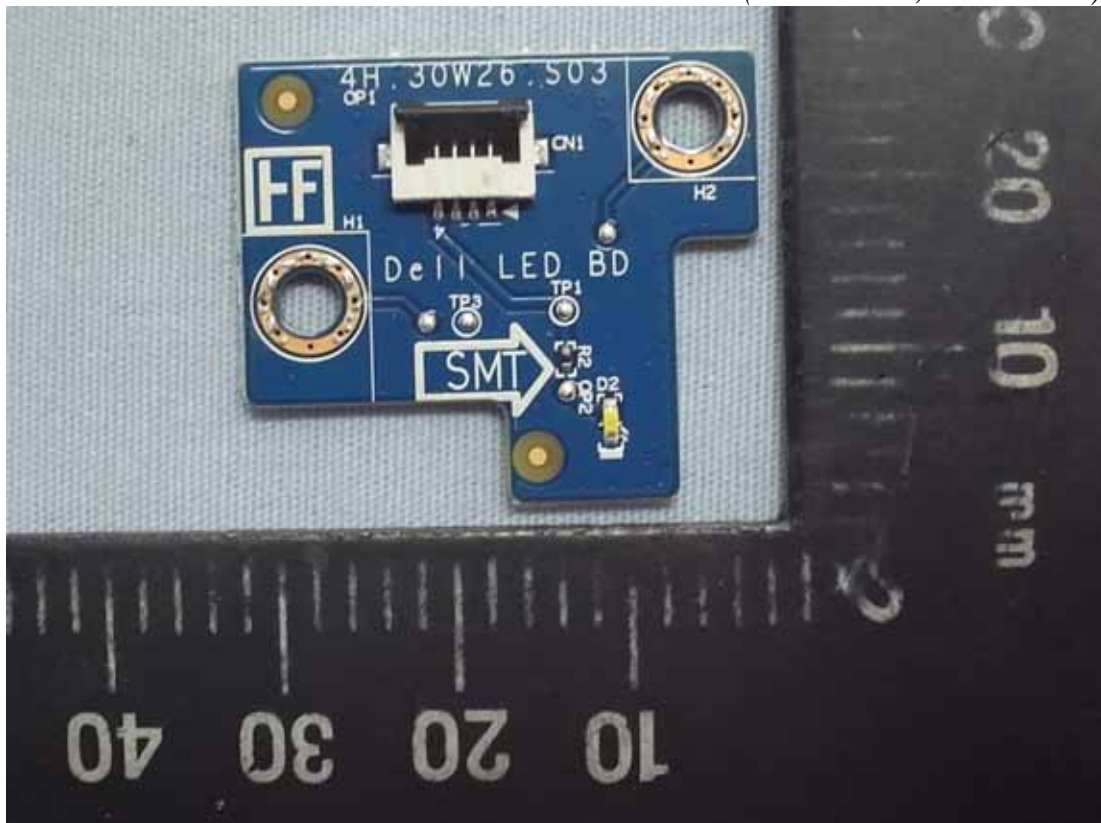
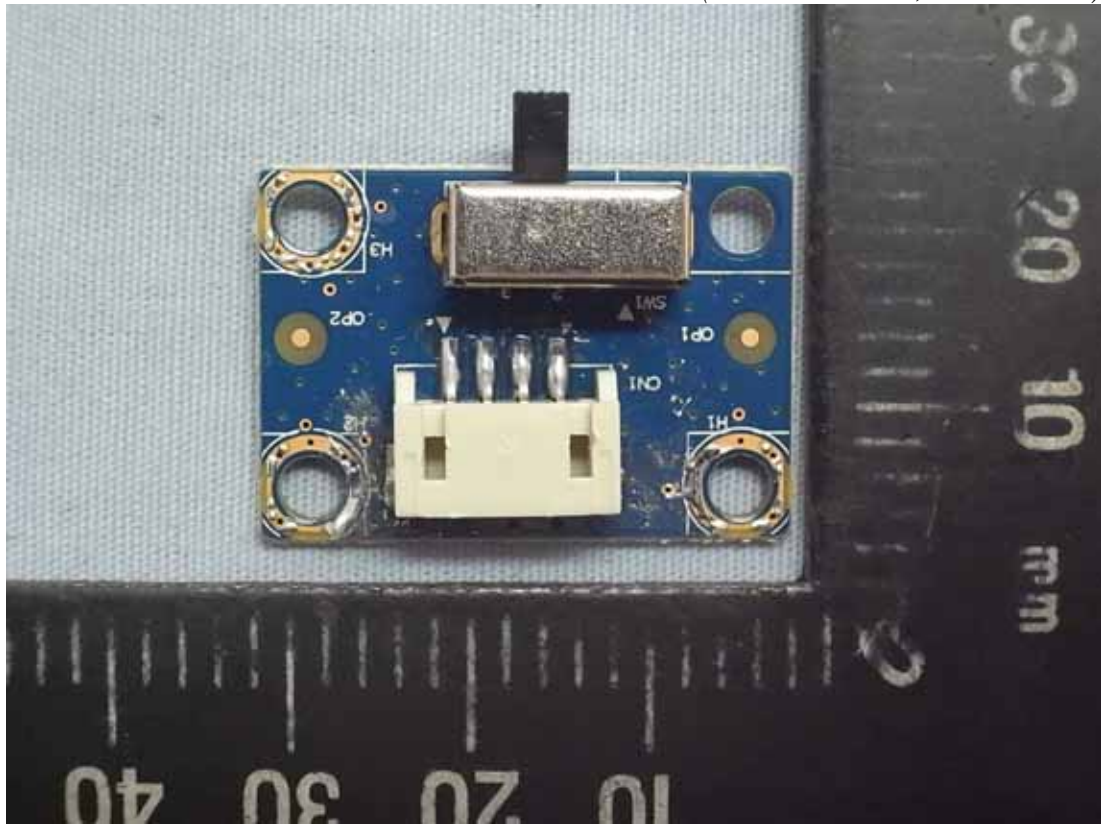


Figure 10  
Internal View (LED Board, Back View)





*Figure 11*  
*Internal View (Control Board, Front View)*



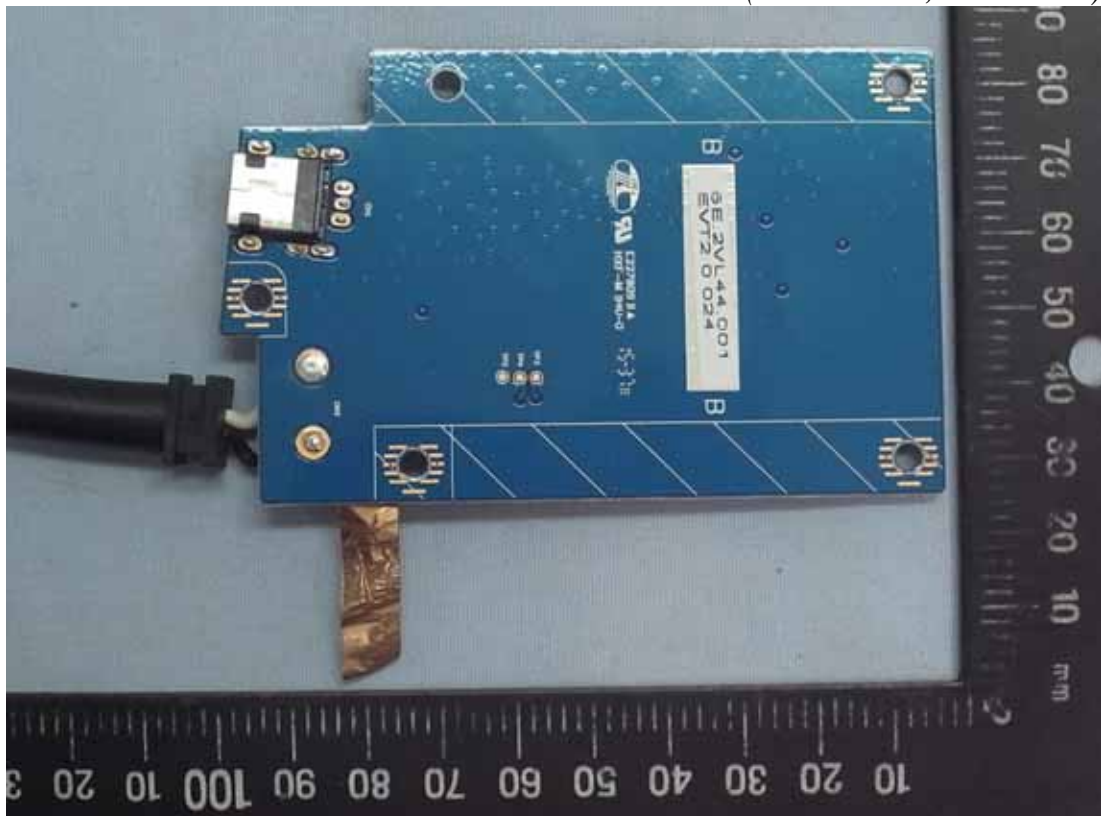
*Figure 12*  
*Internal View (Control Board, Back View)*



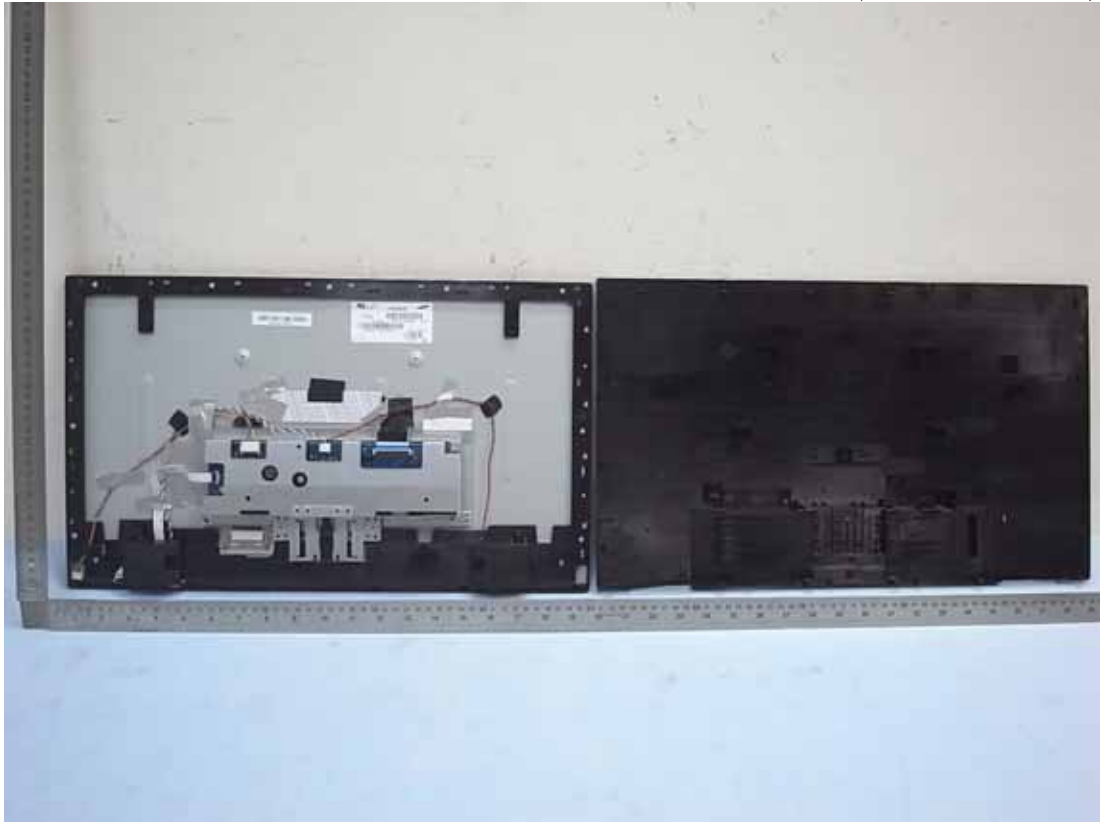
Figure 13  
Internal View (WPC Board, Front View)



Figure 14  
Internal View (WPC Board, Back View)



*Figure 15*  
*Internal View (Removed Cover)*

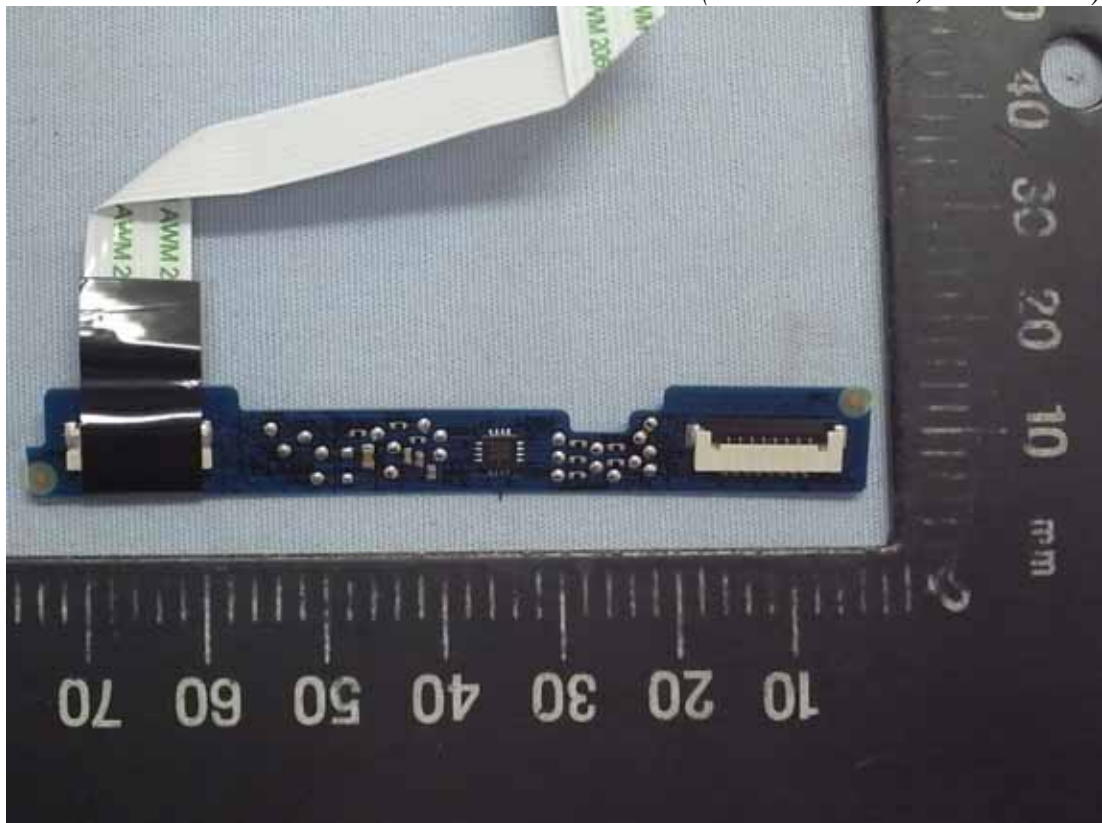


*Figure 16*  
*Internal View (Removed Shielded Case)*

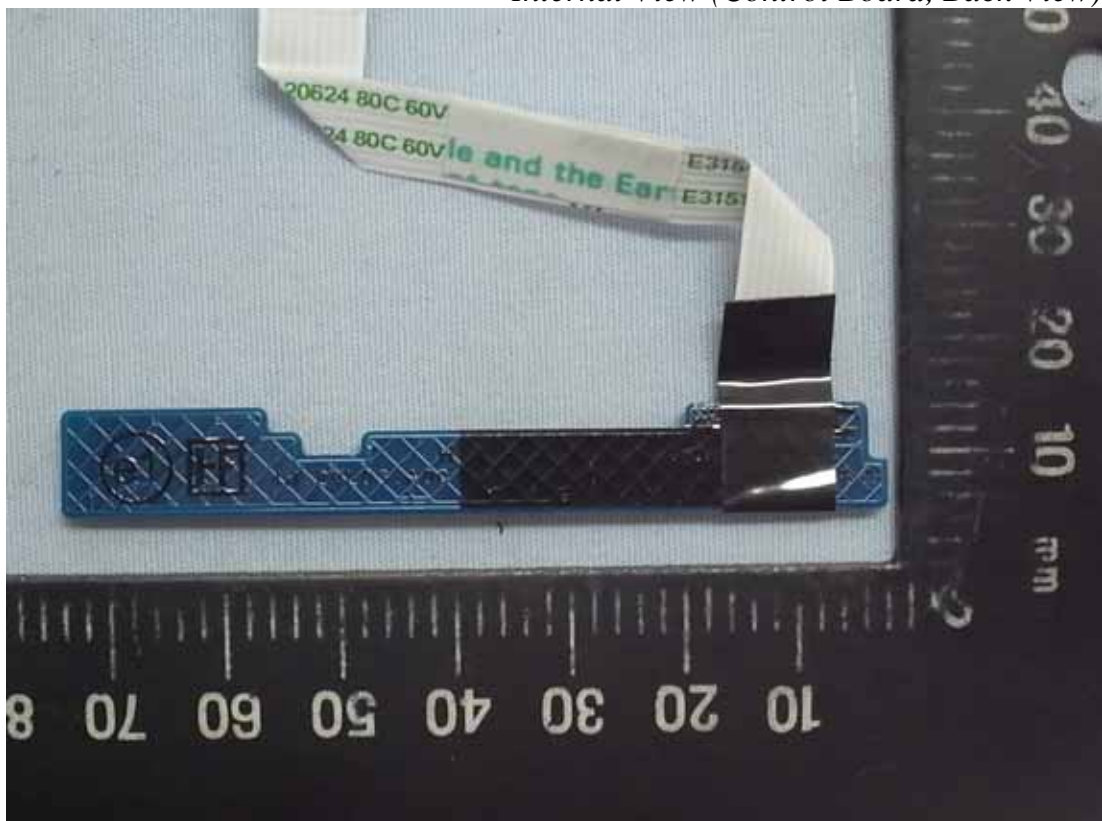




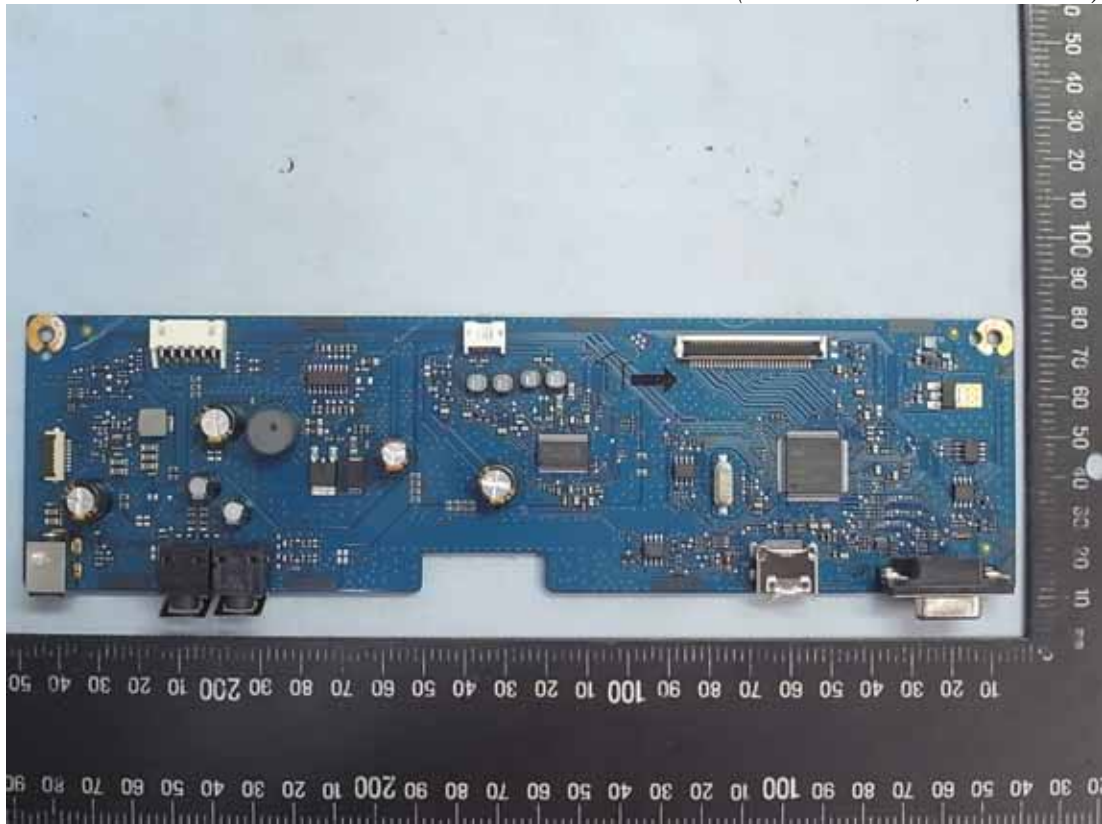
*Figure 17*  
*Internal View (Control Board, Front View)*



*Figure 18*  
*Internal View (Control Board, Back View)*



*Figure 19*  
*Internal View (Main Board, Front View)*



*Figure 20*  
*Internal View (Main Board, Back View)*





*Figure 21*  
*Internal View (LCD Panel, Back View)*



*Figure 22*  
*Internal View (LCD Panel, Label View)*



*Figure 23*  
*AC Adapter M/N HA65NS5-00 (Front and Side View)*



*Figure 24*  
*AC Adapter M/N HA65NS5-00 (Back and Side View)*



Figure 25  
AC Adapter M/N HA65NS5-00 (Label View)



Figure 26  
AC Adapter M/N DA65NM111-00 (Front and Side View)





Figure 27  
AC Adapter M/N DA65NM111-00 (Back and Side View)



Figure 28  
AC Adapter M/N DA65NM111-00 (Label View)



*Figure 29*  
*HDMI Cable*



*Figure 30*  
*AC Power Cord*

