

EUT Internal Photos

Figure 7
Internal View (Removed Cover)

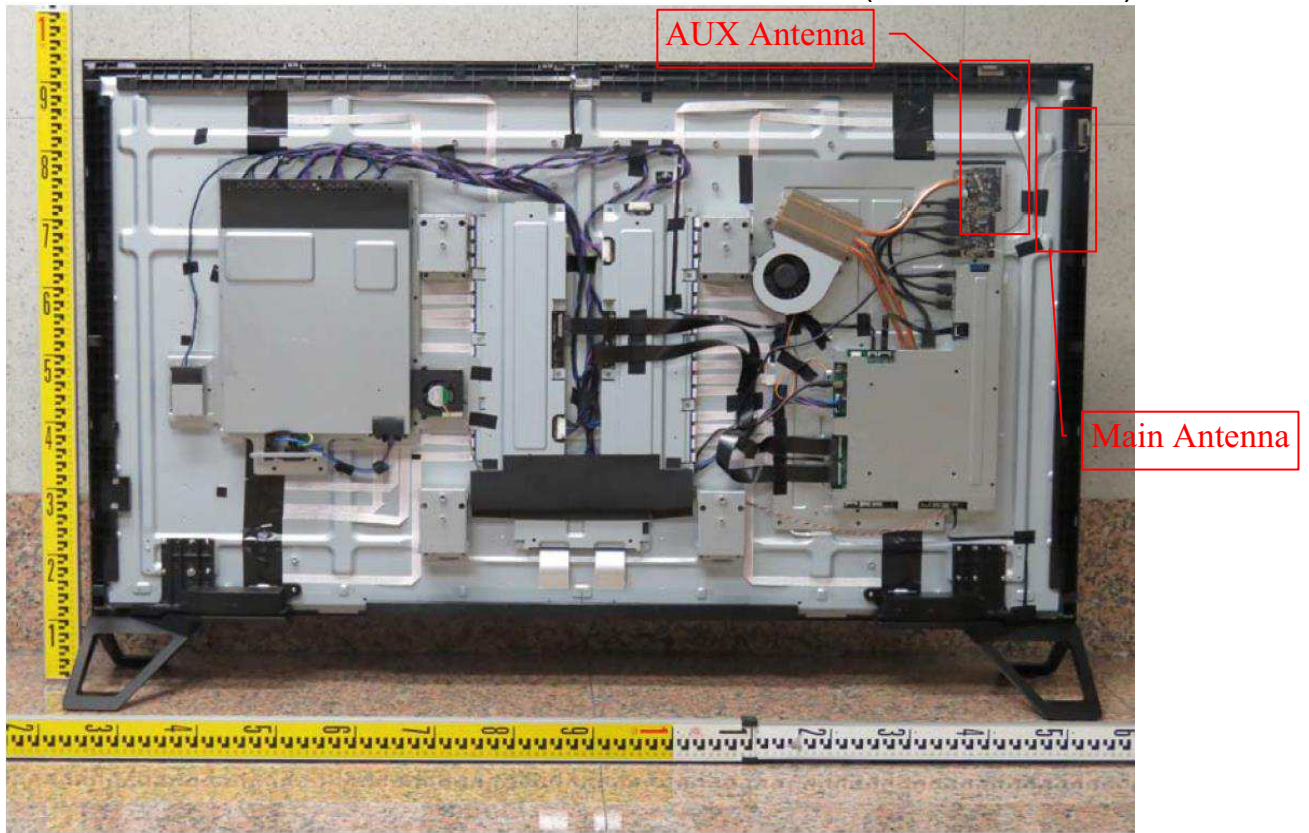


Figure 8
Internal View (Removed Mylar)

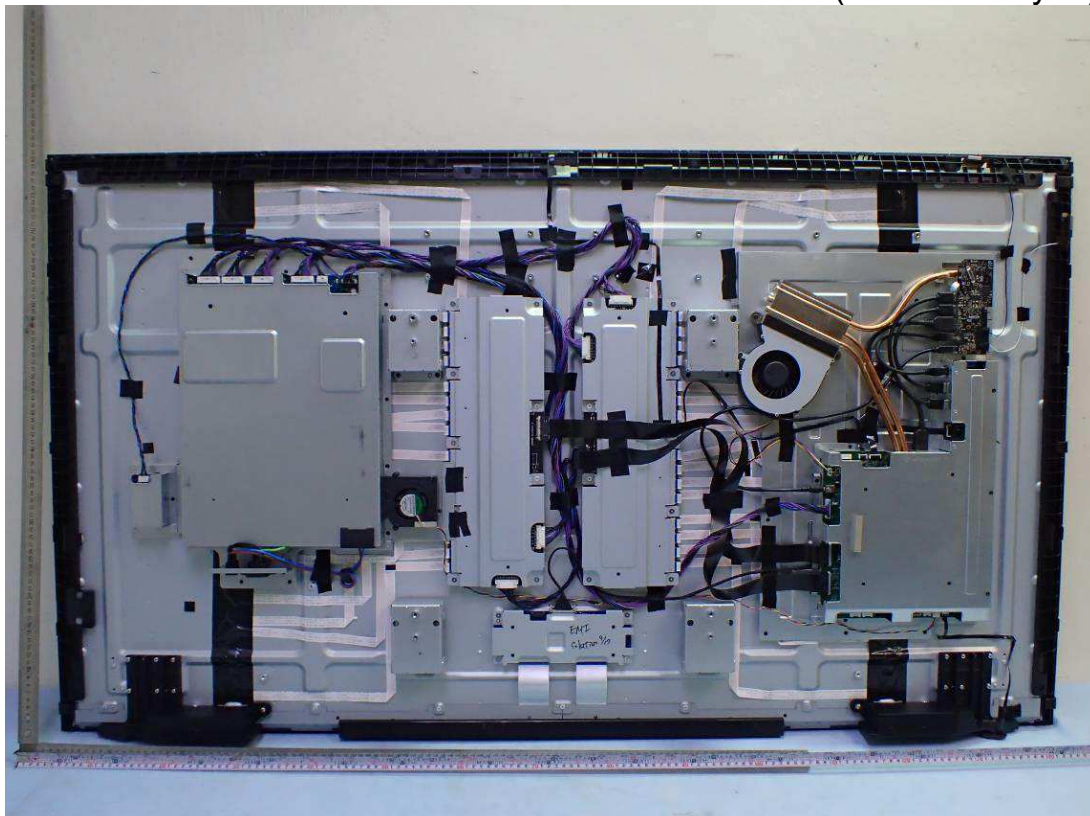


Figure 9
Internal View (Switch Board, Back View)

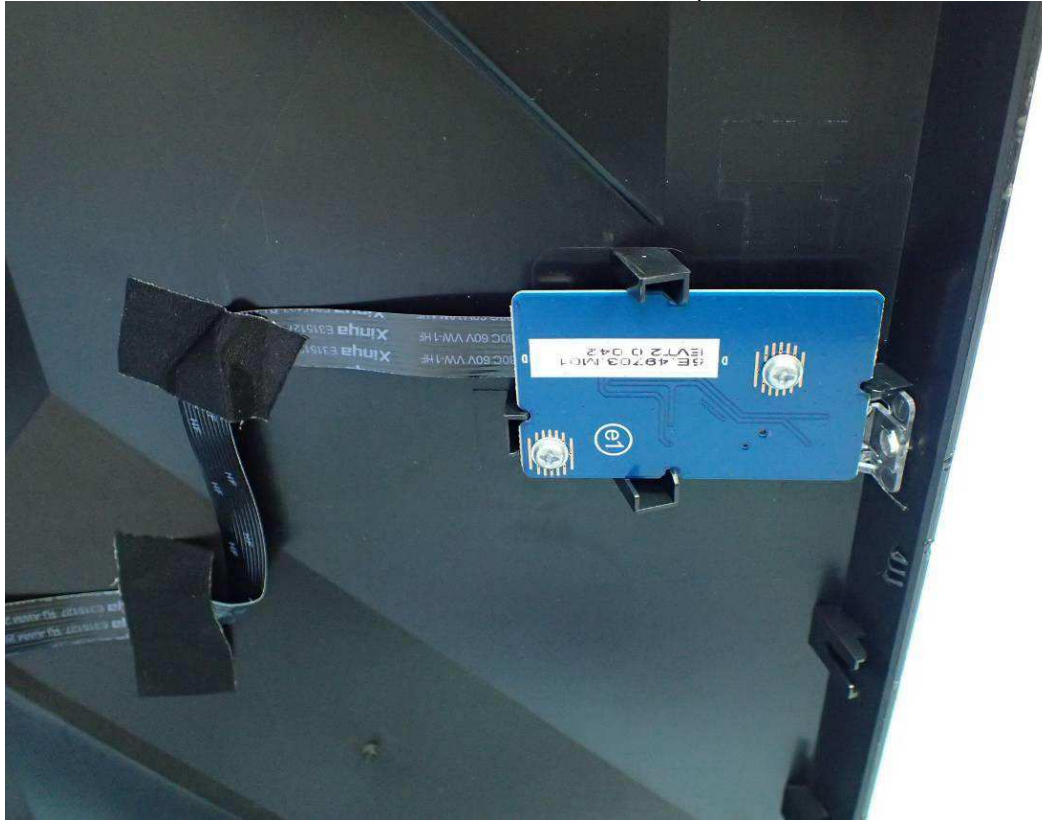


Figure 10
Internal View (Switch Board, Front View)

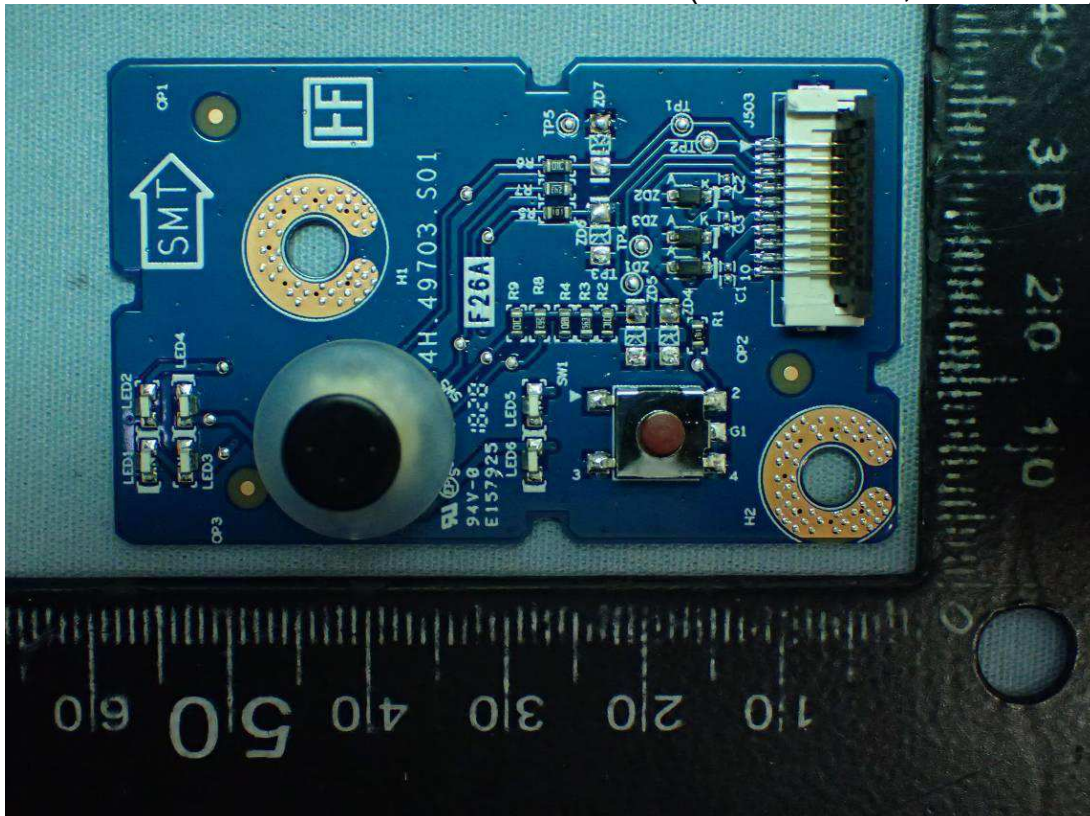


Figure 11
Internal View

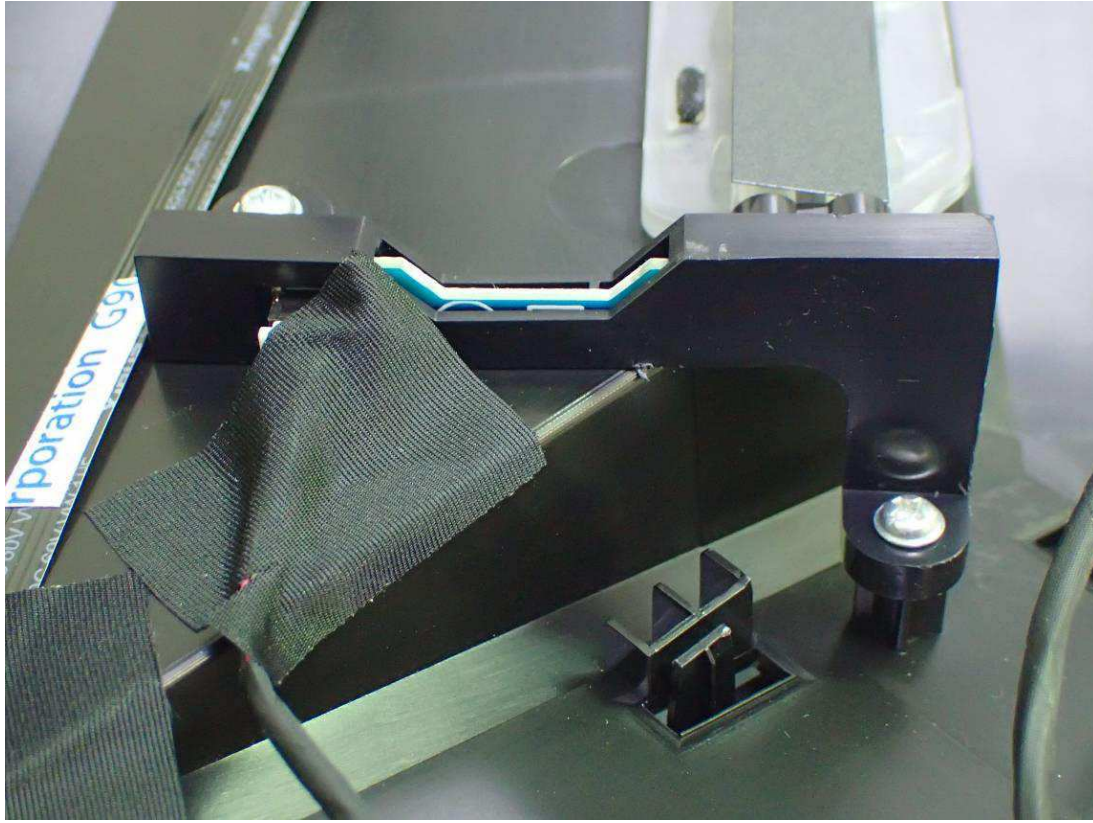


Figure 12
Internal View (Control Board, Front View)

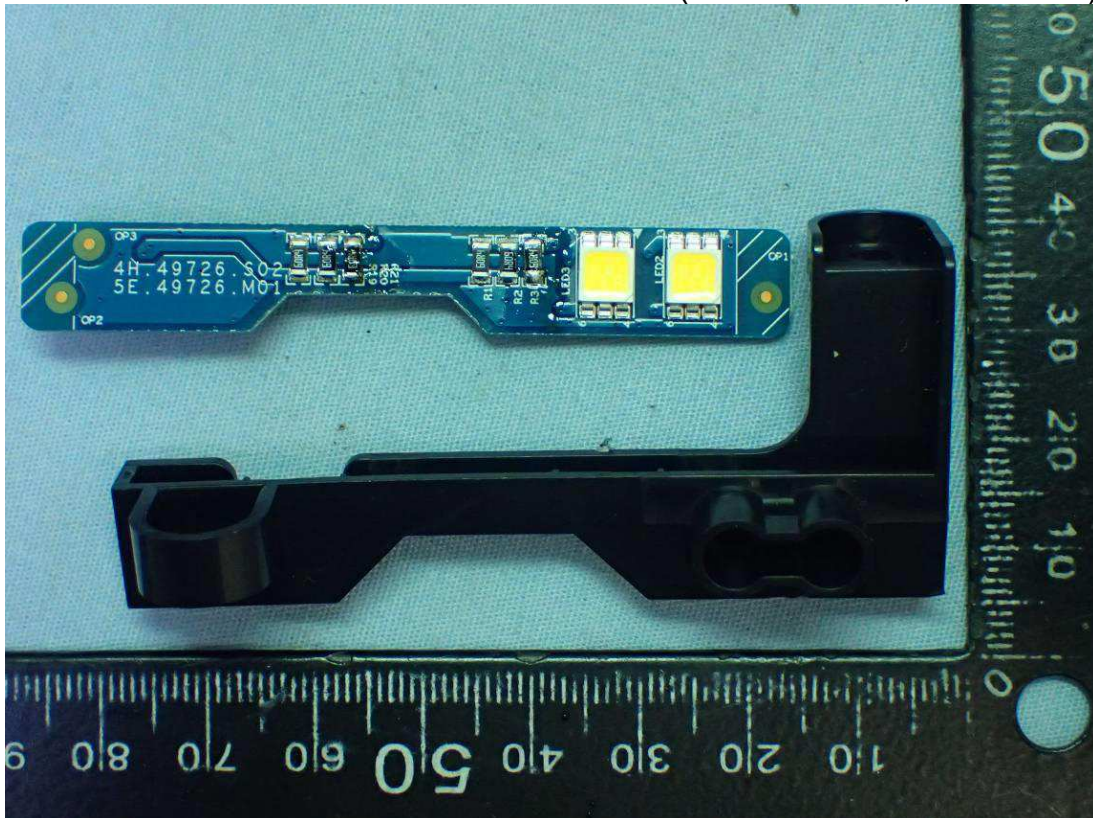


Figure 13
Internal View (Control Board, Back View)

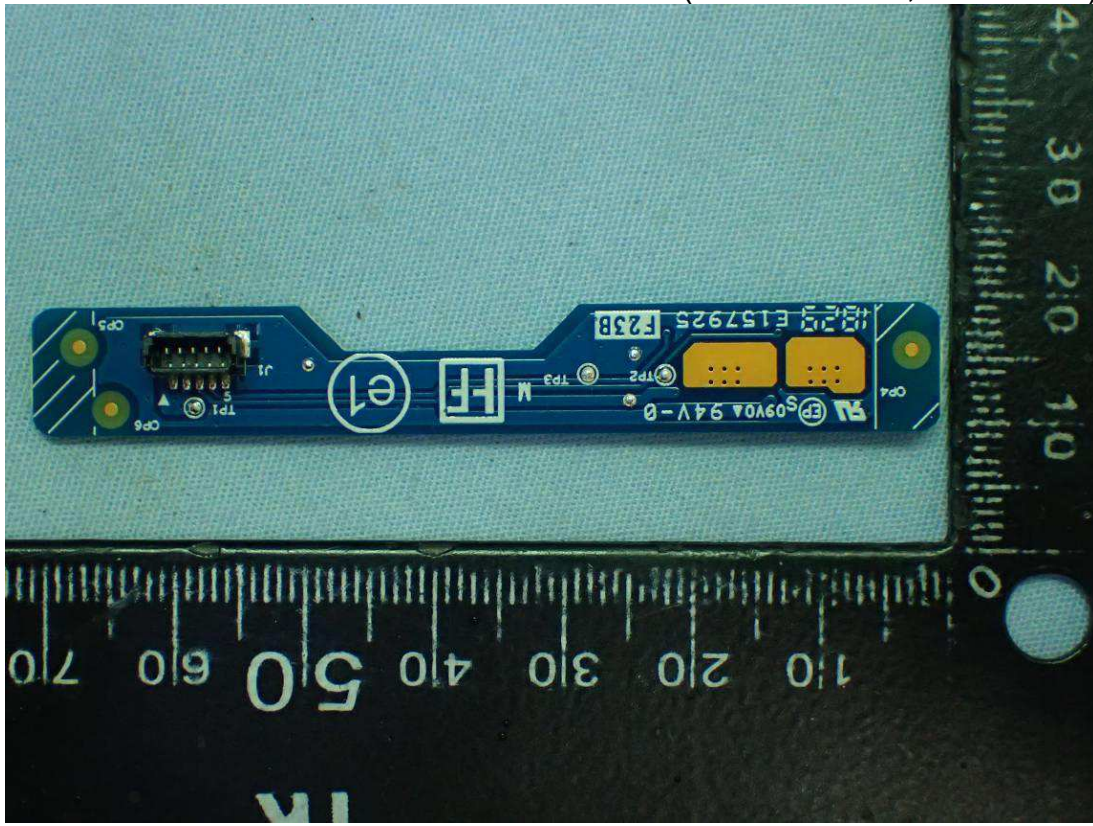


Figure 14
Internal View

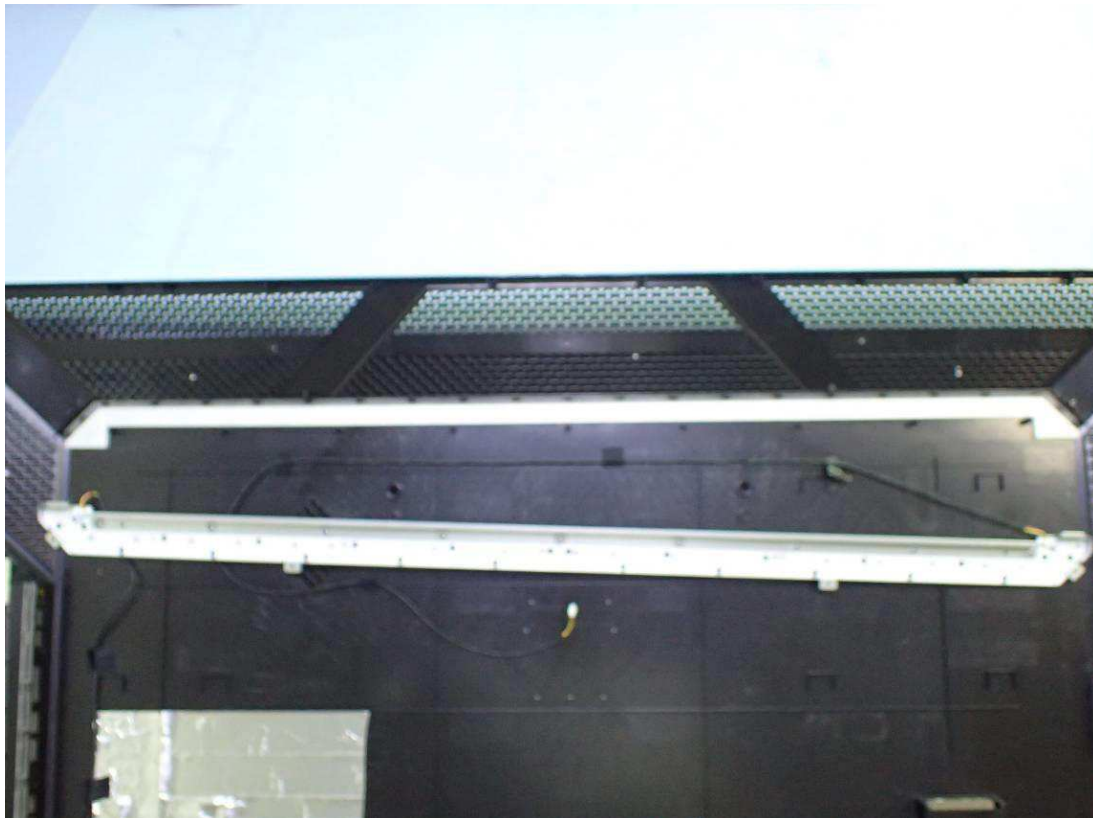


Figure 15
Internal View (Control Board)

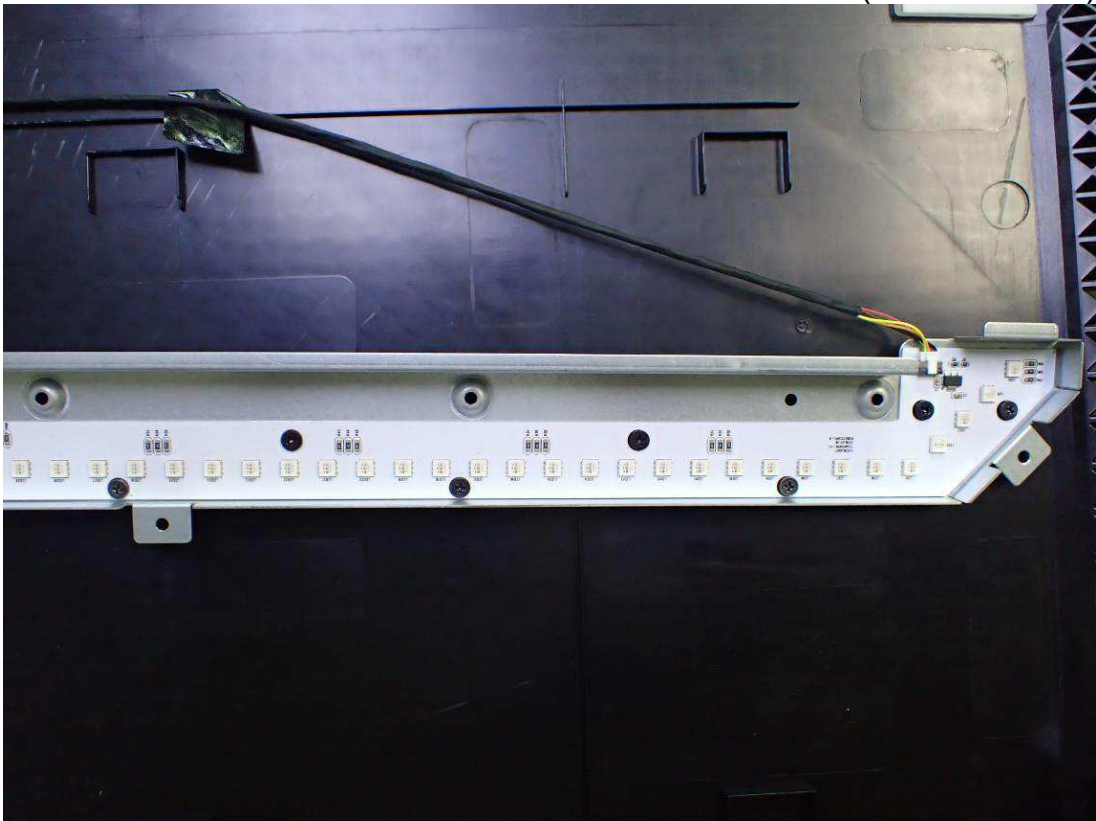


Figure 16
Internal View (Control Board)

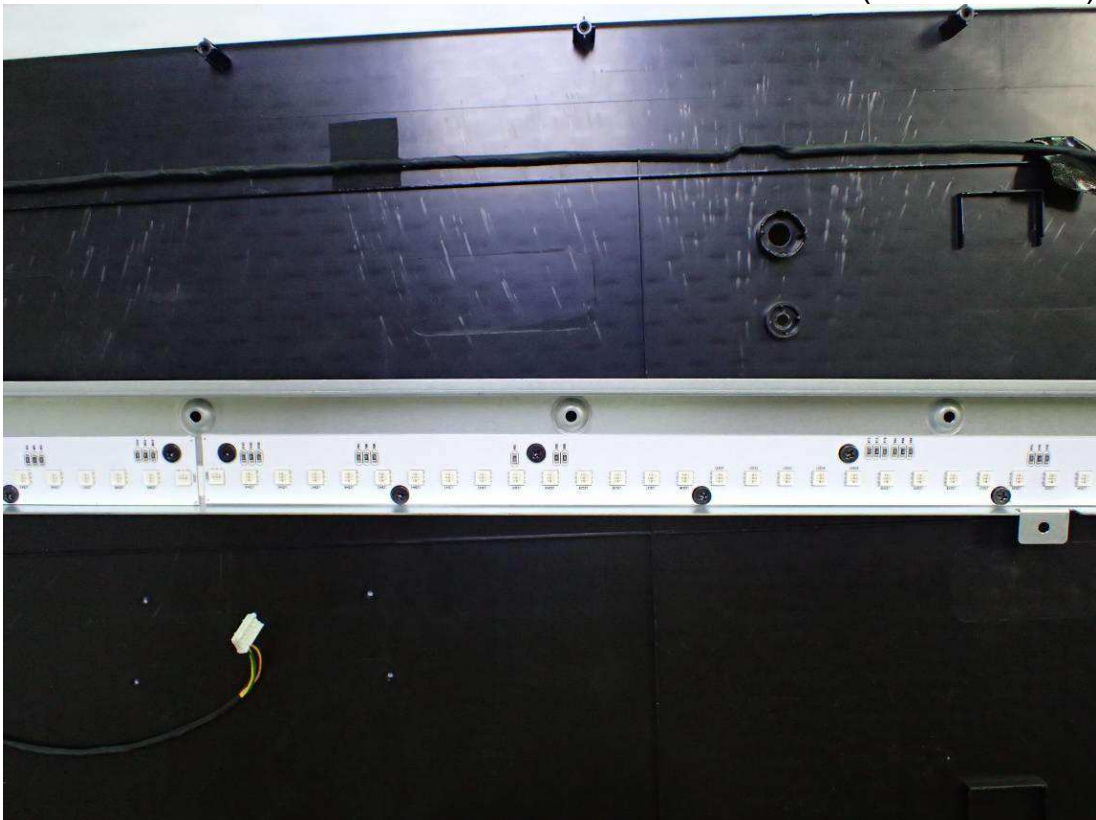


Figure 17
Internal View (Control Board)

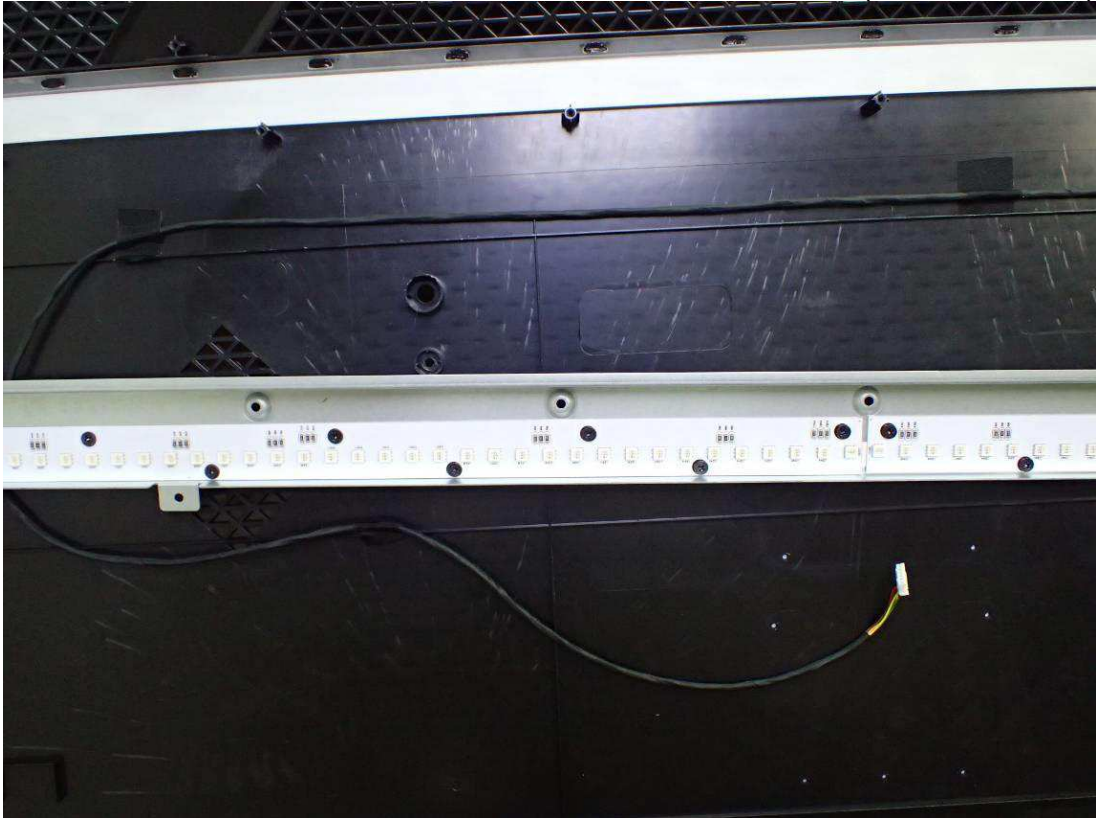


Figure 18
Internal View (Control Board)



Figure 19
Internal View (USB Board, Front View)

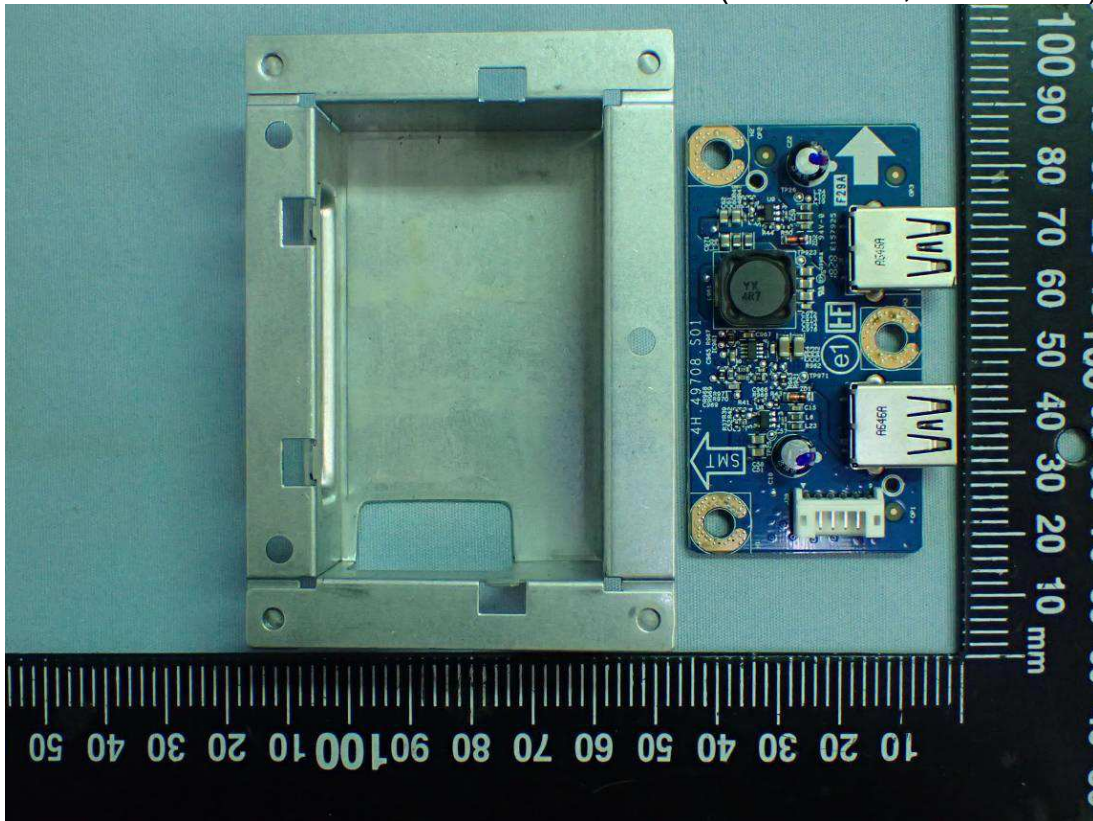


Figure 20
Internal View (USB Board, Back View)

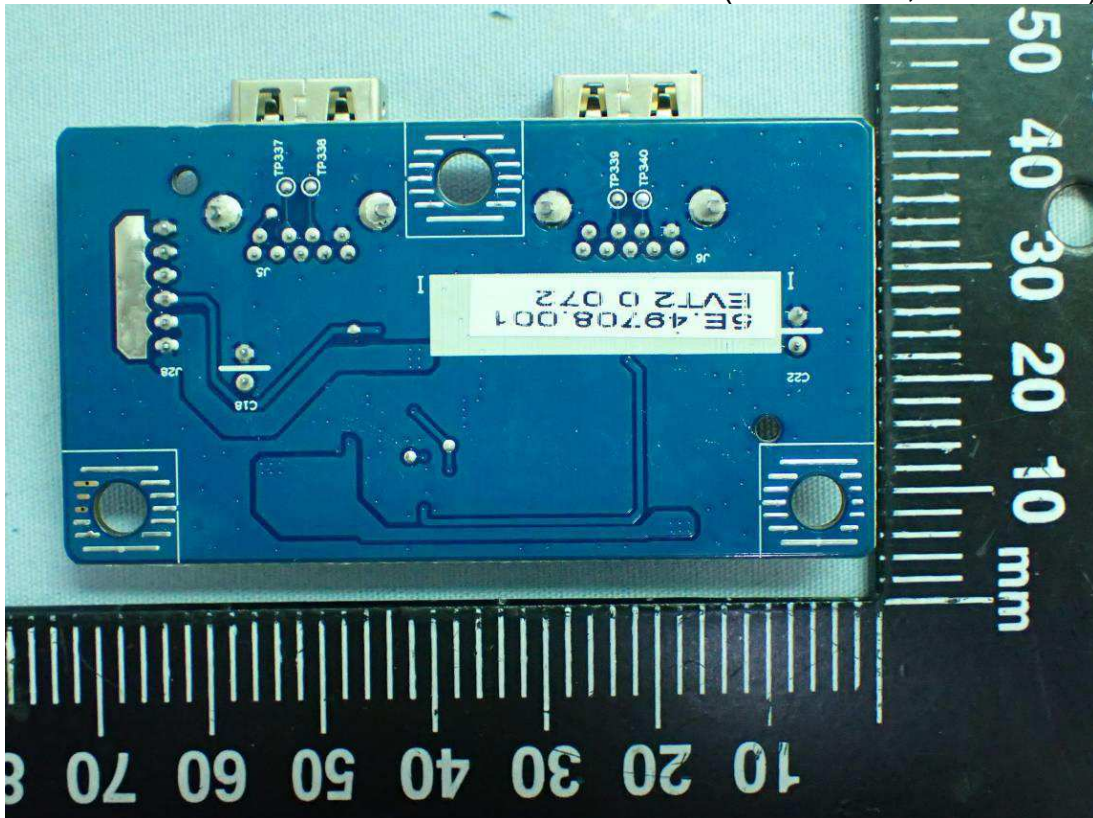


Figure 21
Internal View (DC Inverter Board, Front View)

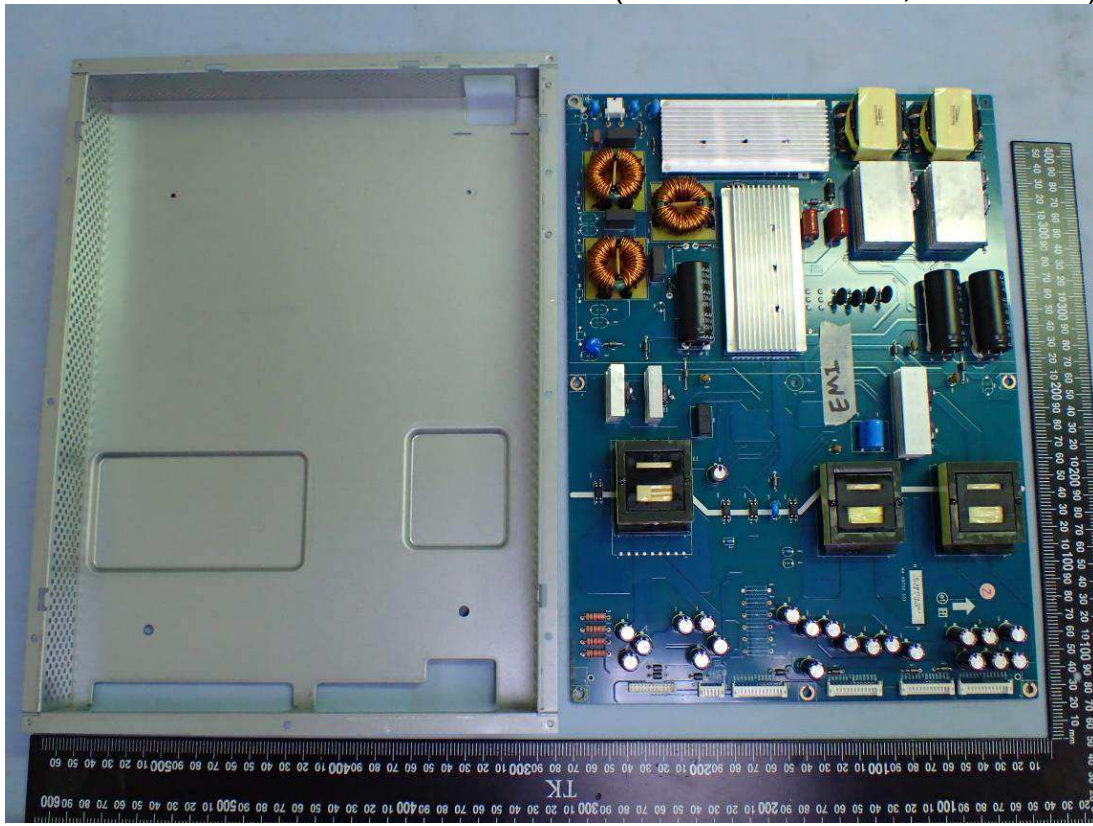


Figure 22
Internal View (DC Inverter Board, Back View)

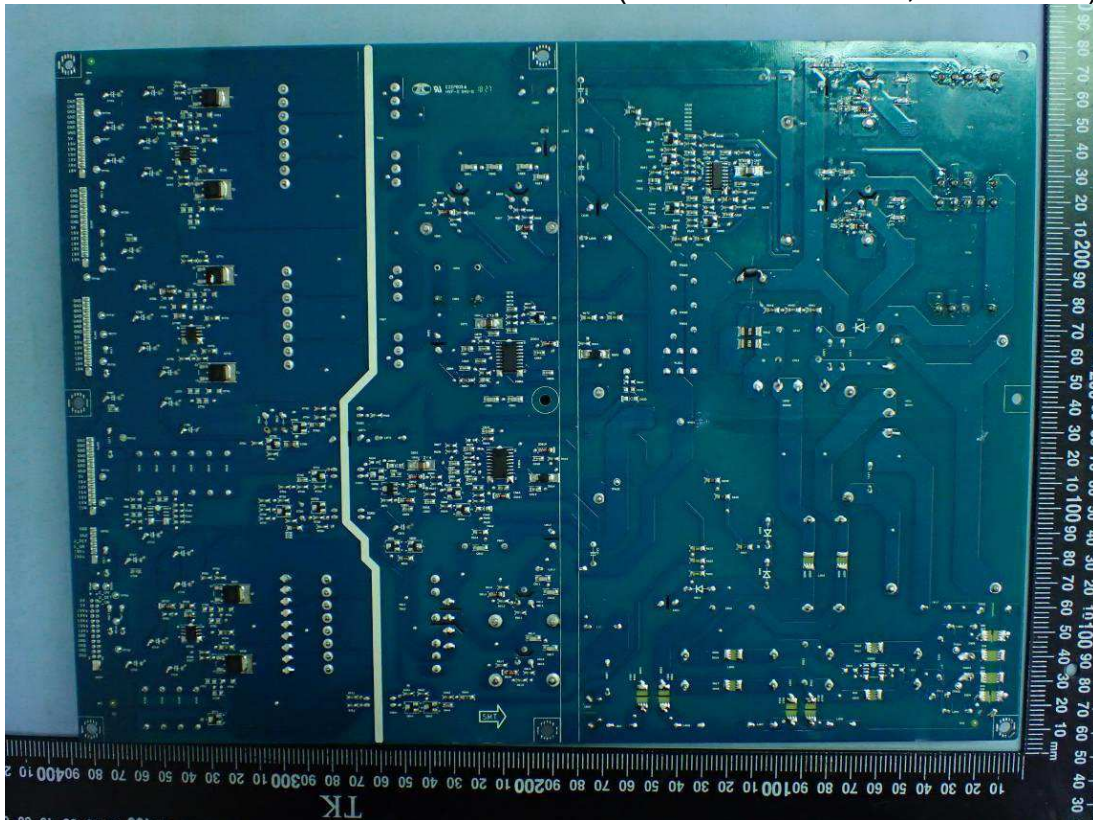


Figure 23
Internal View (Control Board, Front View)

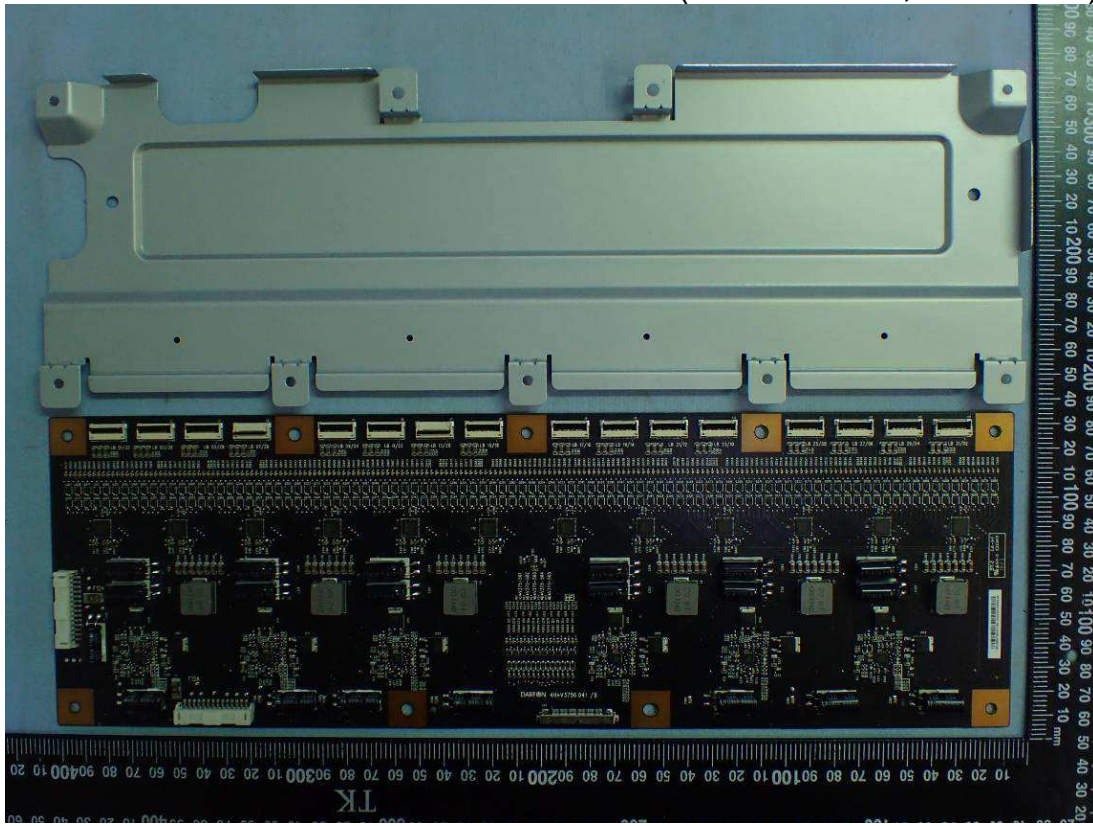


Figure 24
Internal View (Control Board, Back View)

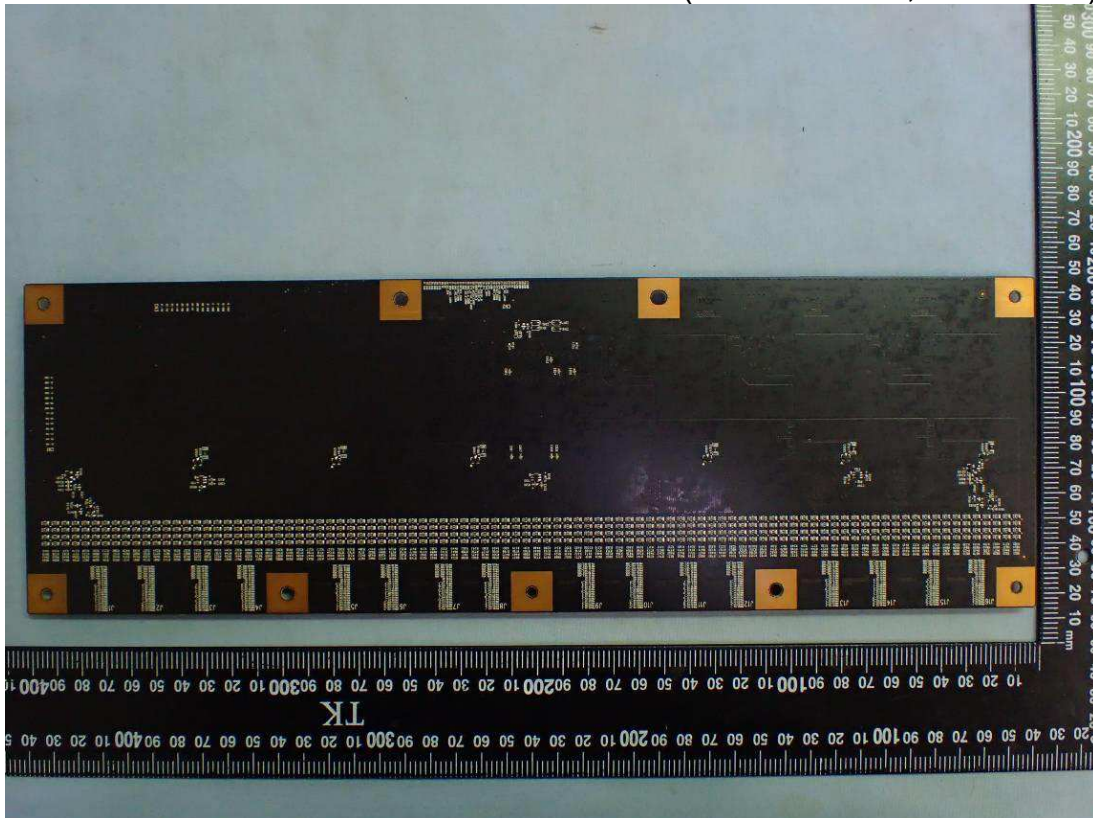


Figure 25
Internal View (Control Board, Front View)

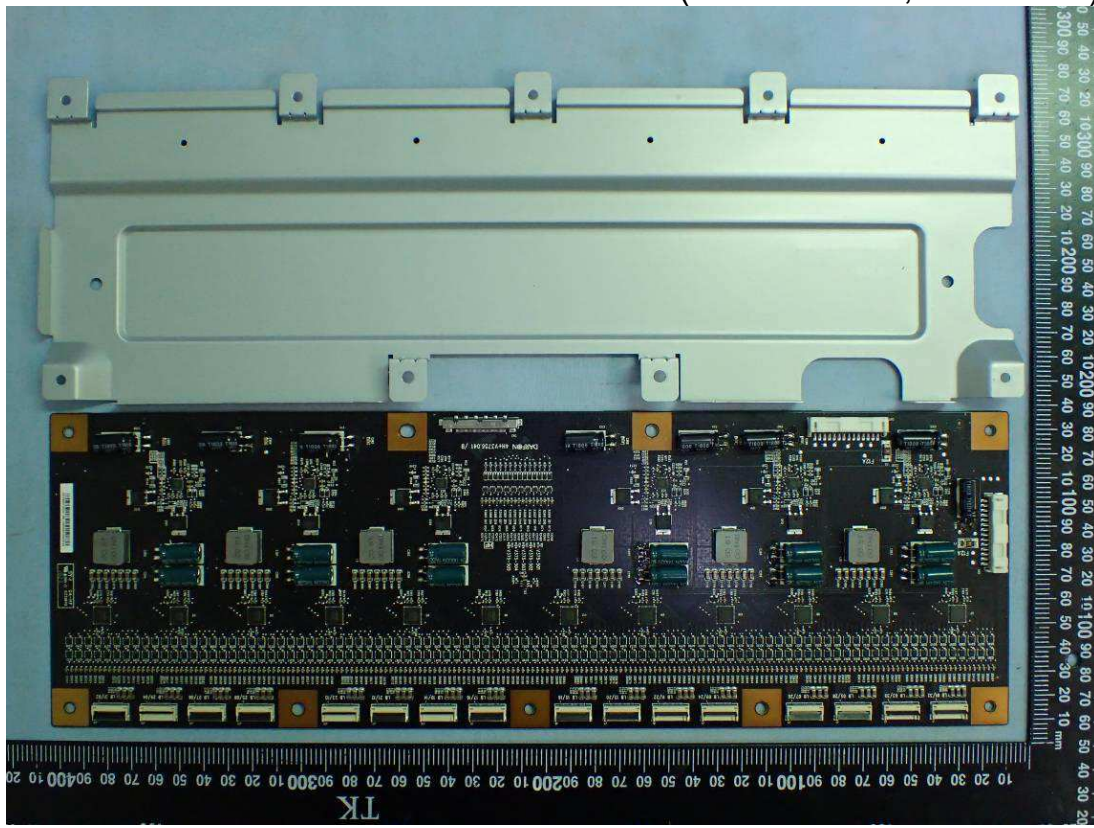


Figure 26
Internal View (Control Board, Back View)

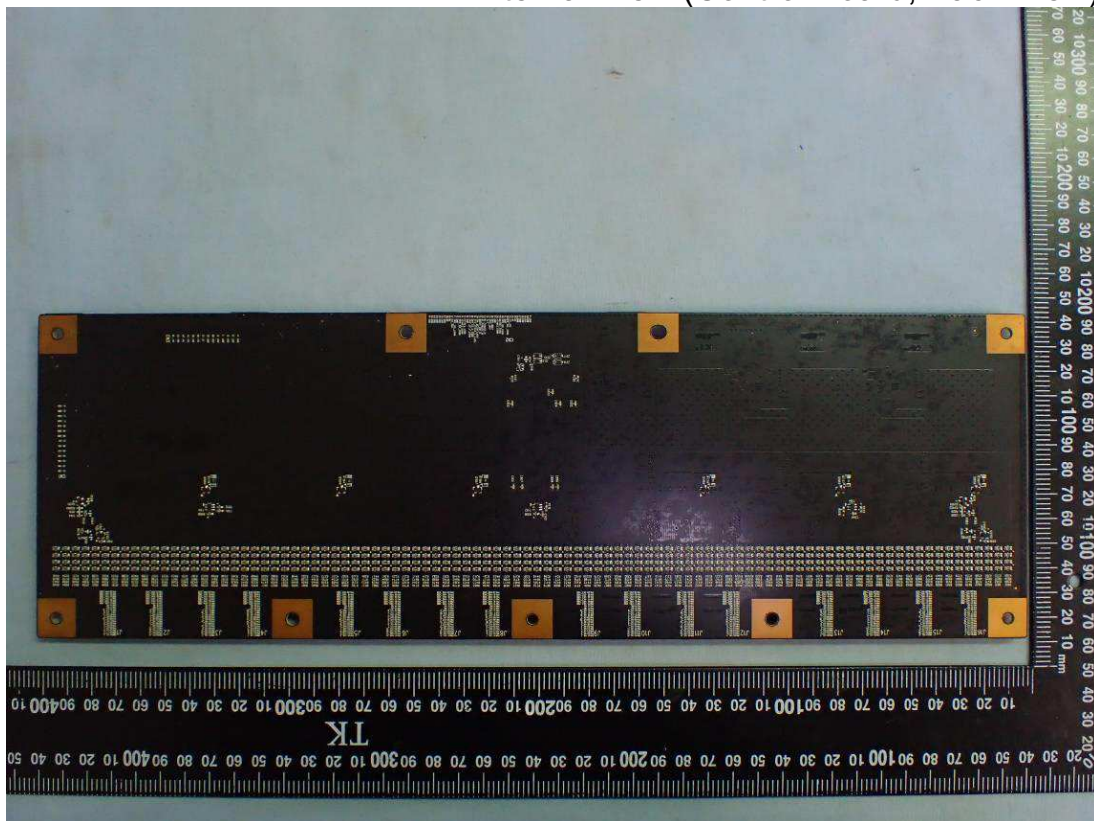


Figure 27
Internal View (LVDS Board, Front View)

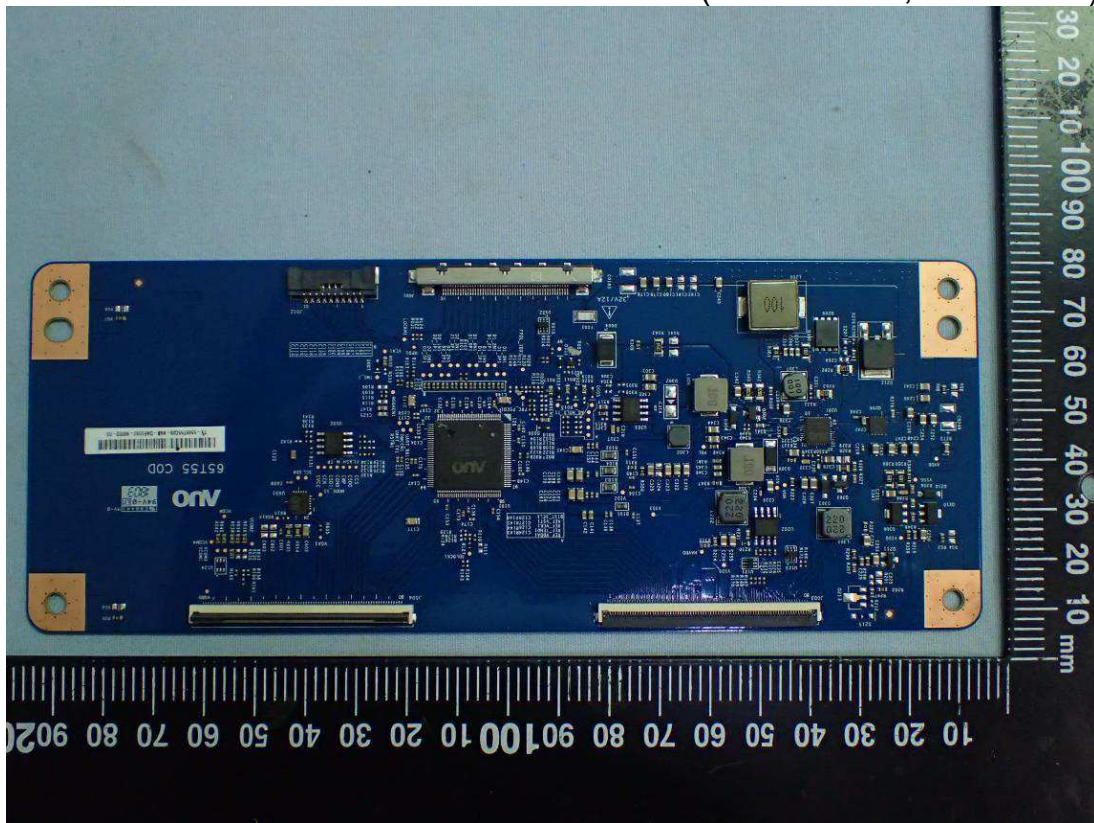


Figure 28
Internal View (LVDS Board, Back View)

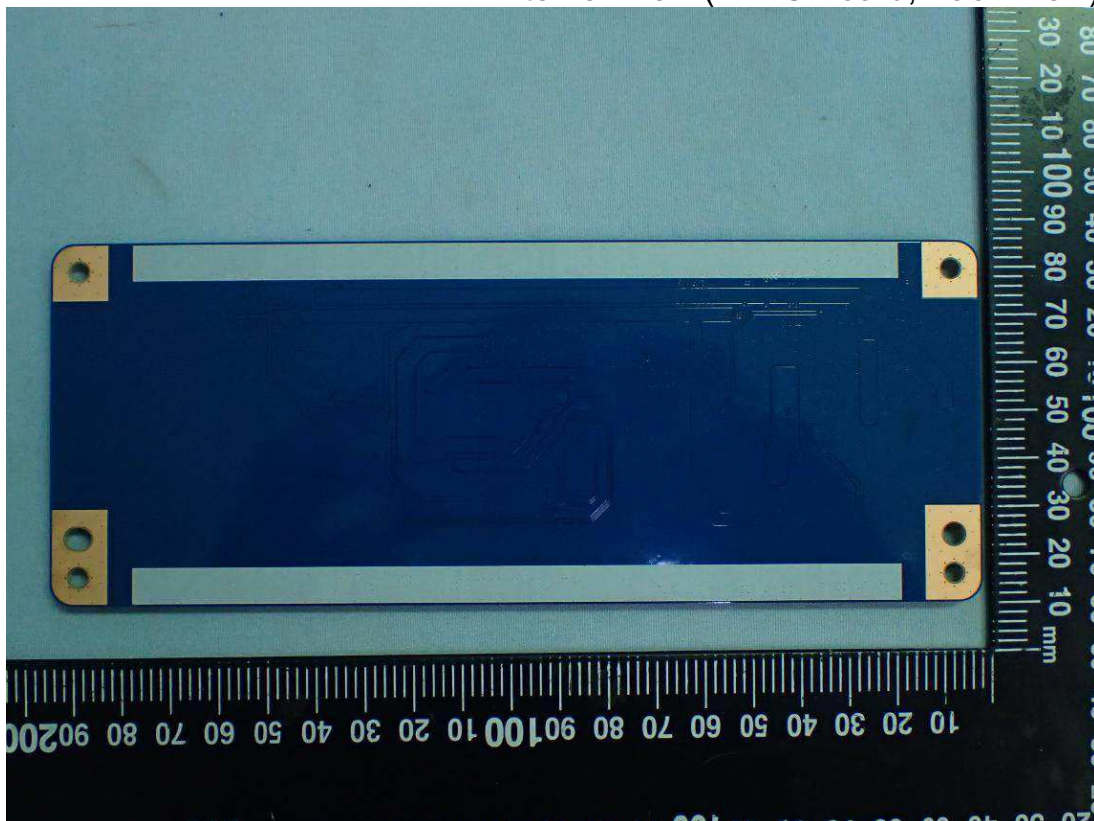


Figure 29
Internal View (I/O Port Board, Front View)

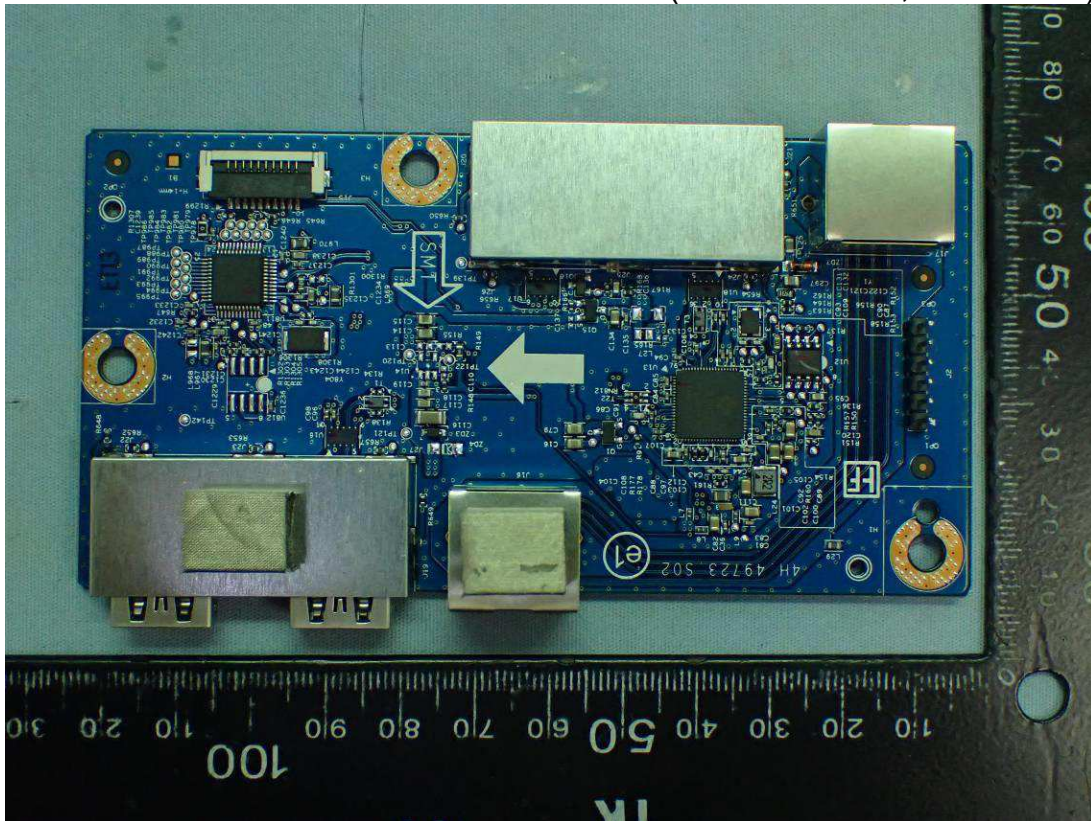


Figure 30
Internal View (I/O Port Board, Back View)

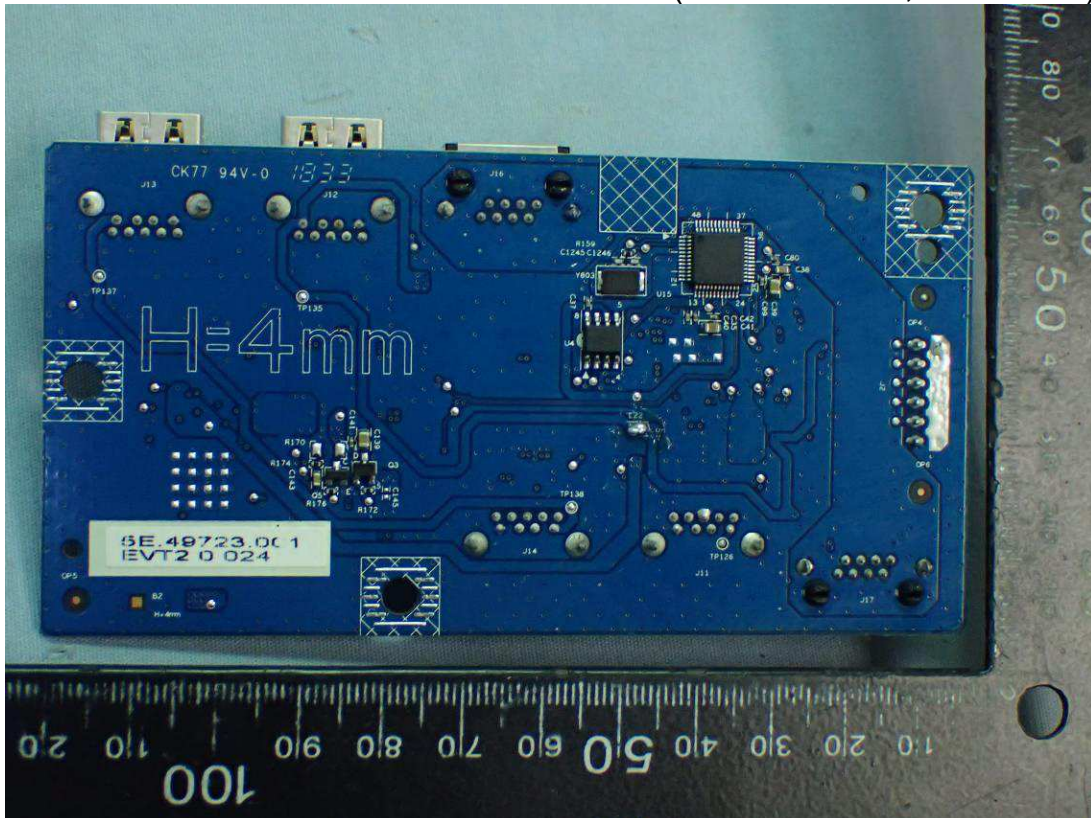


Figure 31
Internal View (DC Fan)

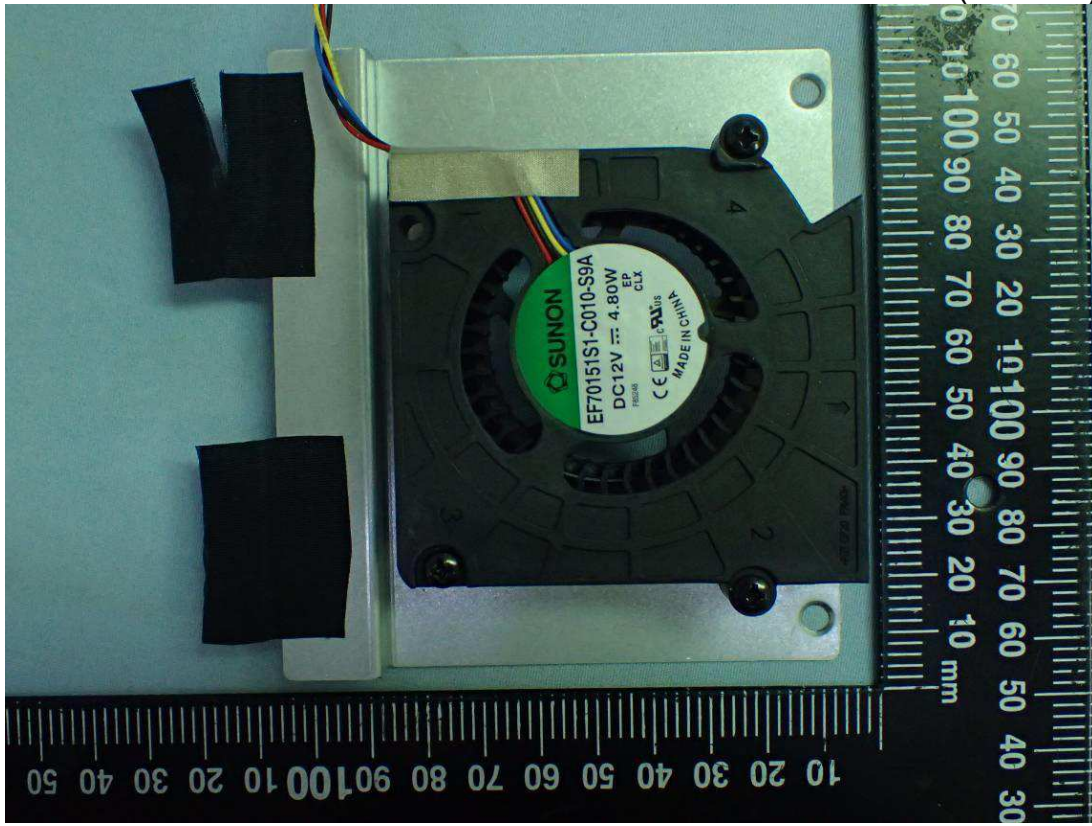


Figure 32
Internal View (DC Fan)

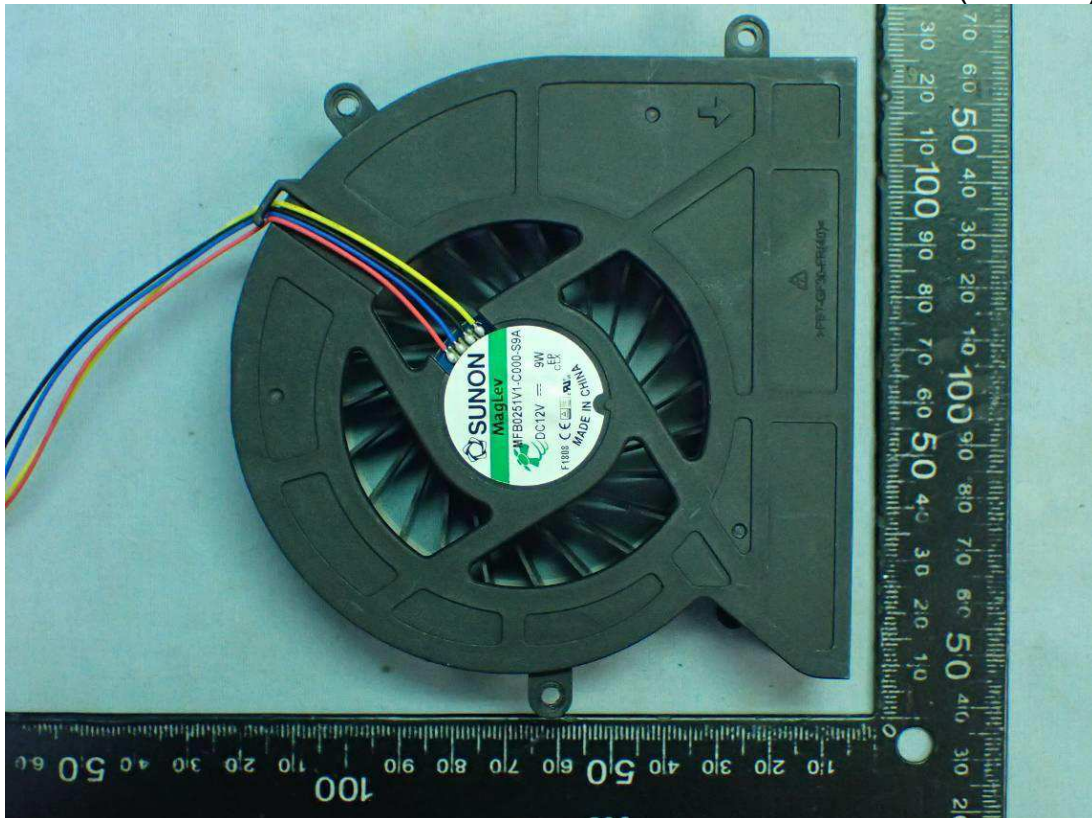


Figure 33
Internal View (SHIELD TV Board, Front View)

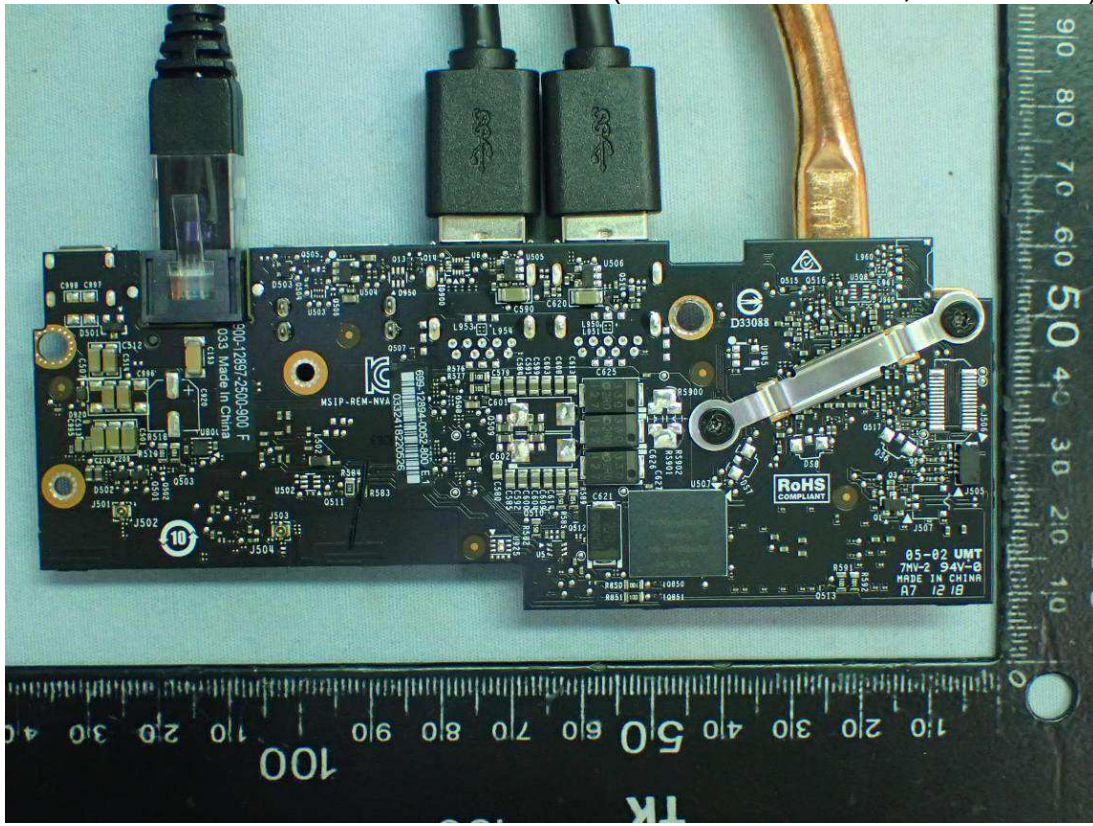


Figure 34
Internal View (SHIELD TV Board, Back View)

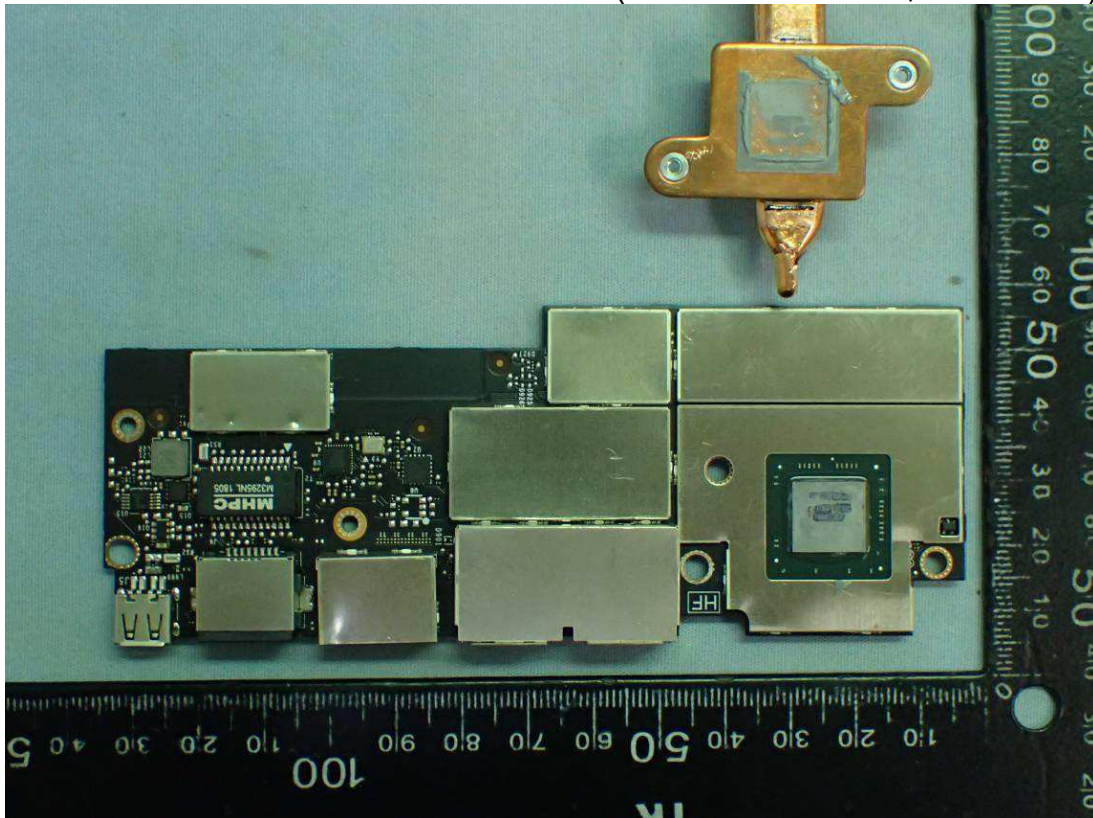


Figure 35
Internal View (SHIELD TV Board, Back View)

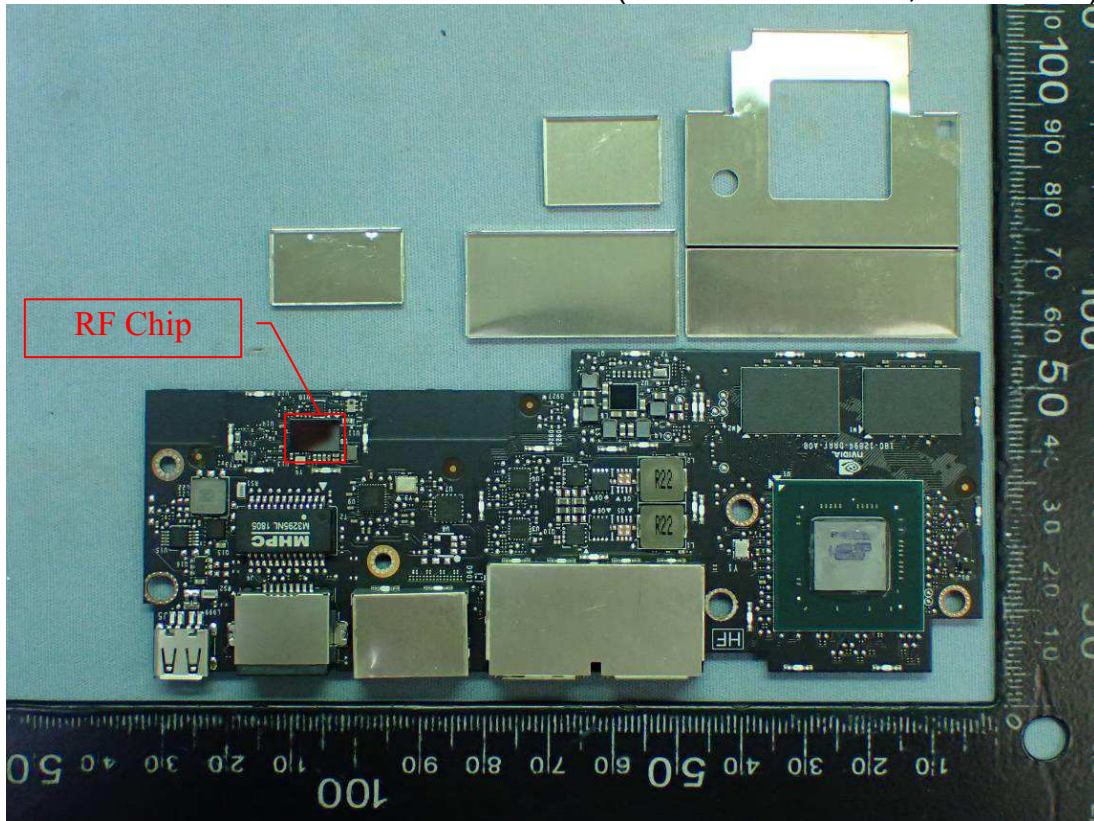


Figure 36
Internal View (RF Circuit View)

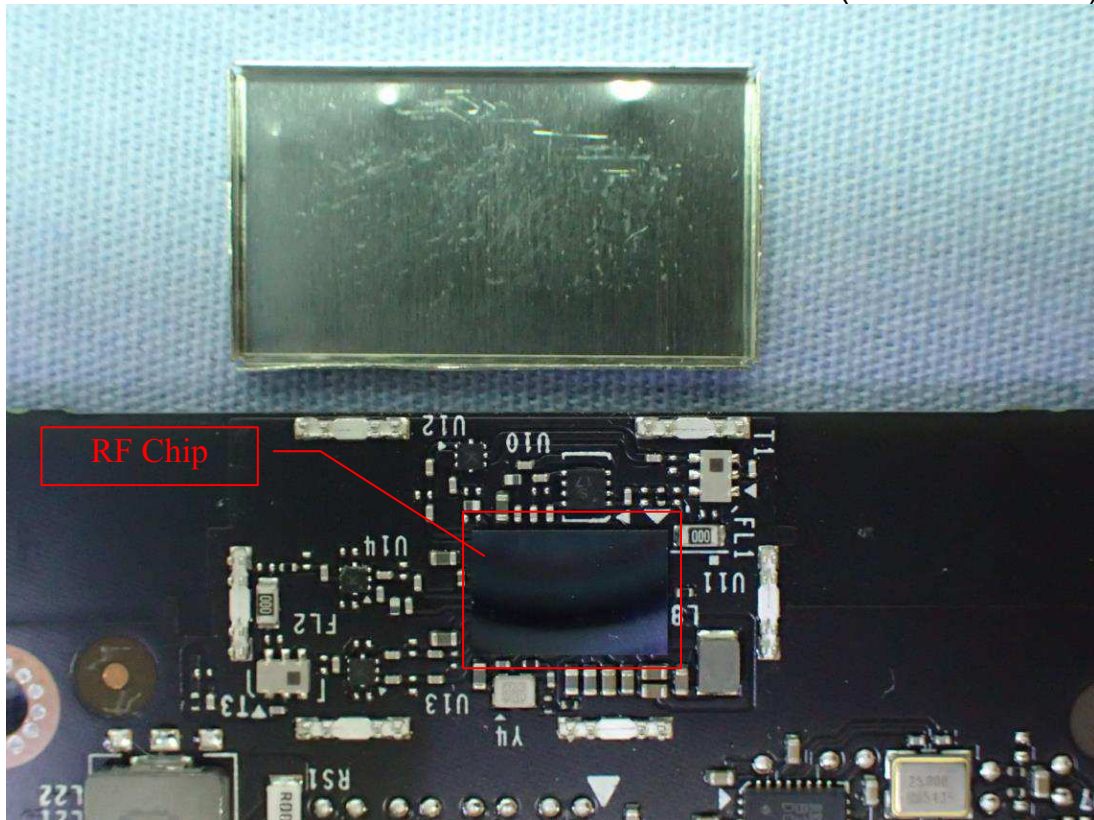


Figure 37
Internal View (Main Board & Control Board)

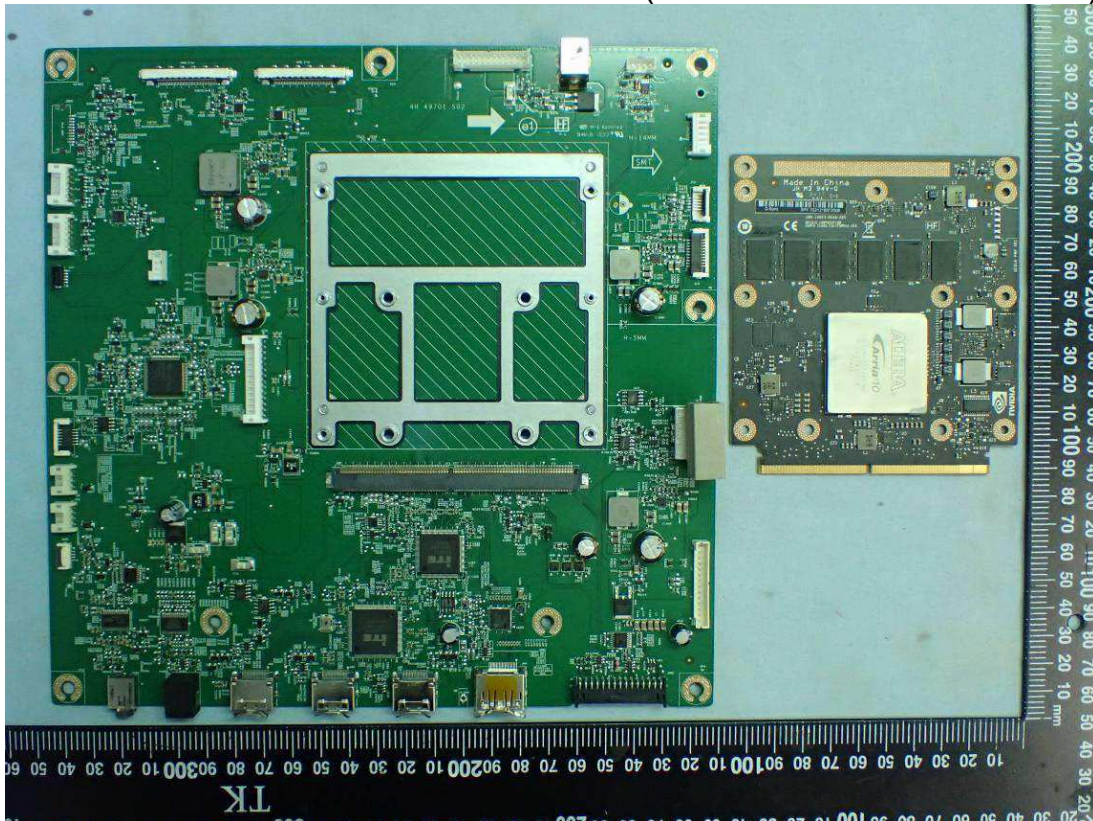


Figure 38
Internal View (Control Board, Front View)

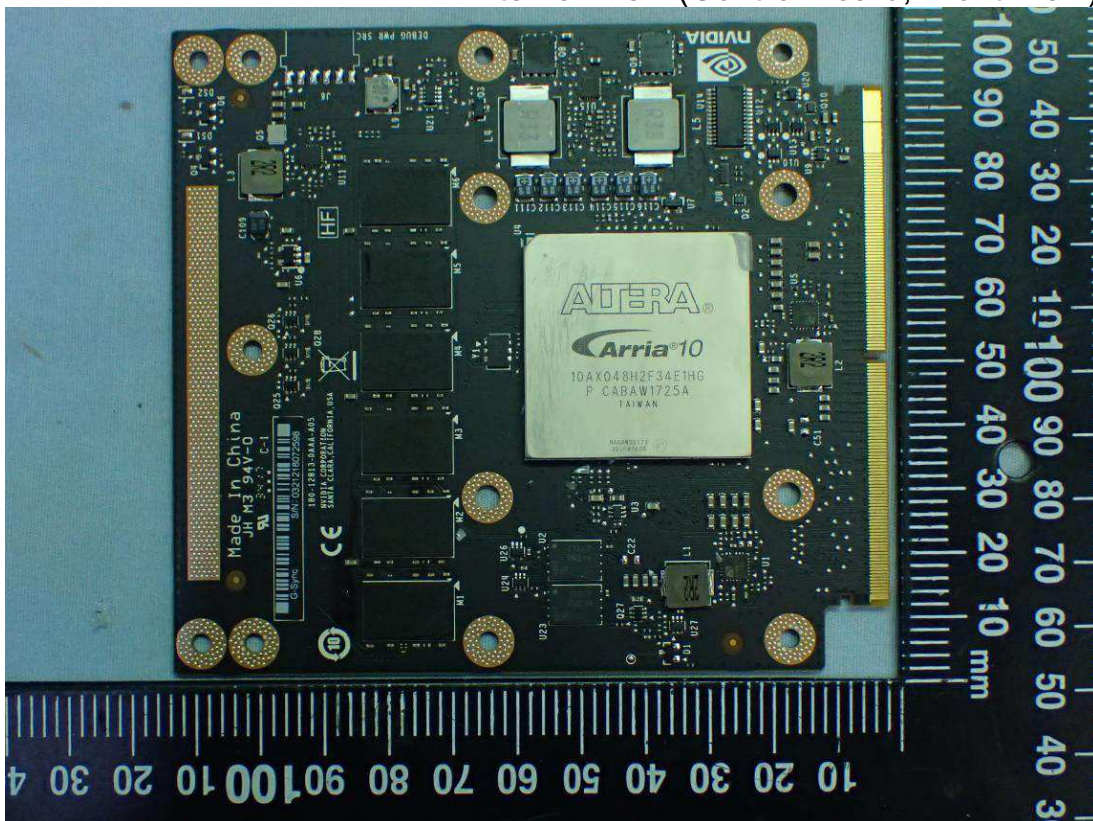


Figure 39
Internal View (Control Board, Back View)

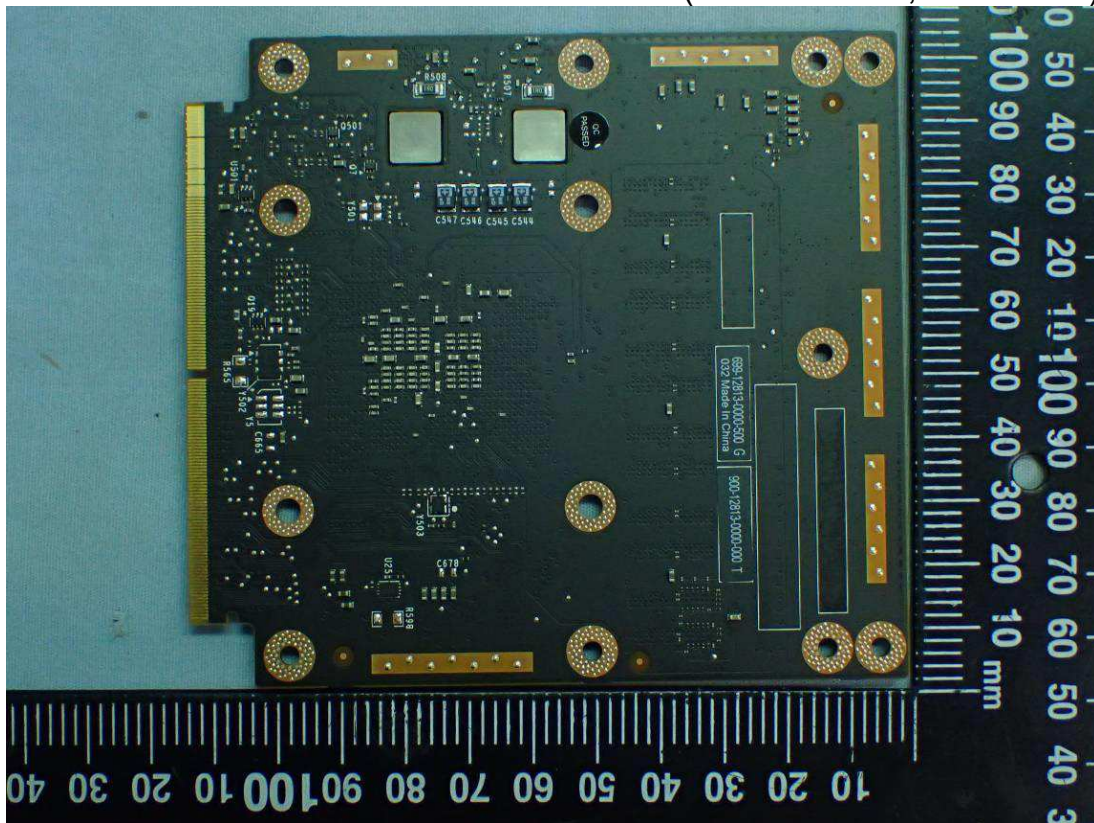


Figure 40
Internal View (Main Board, Front View)

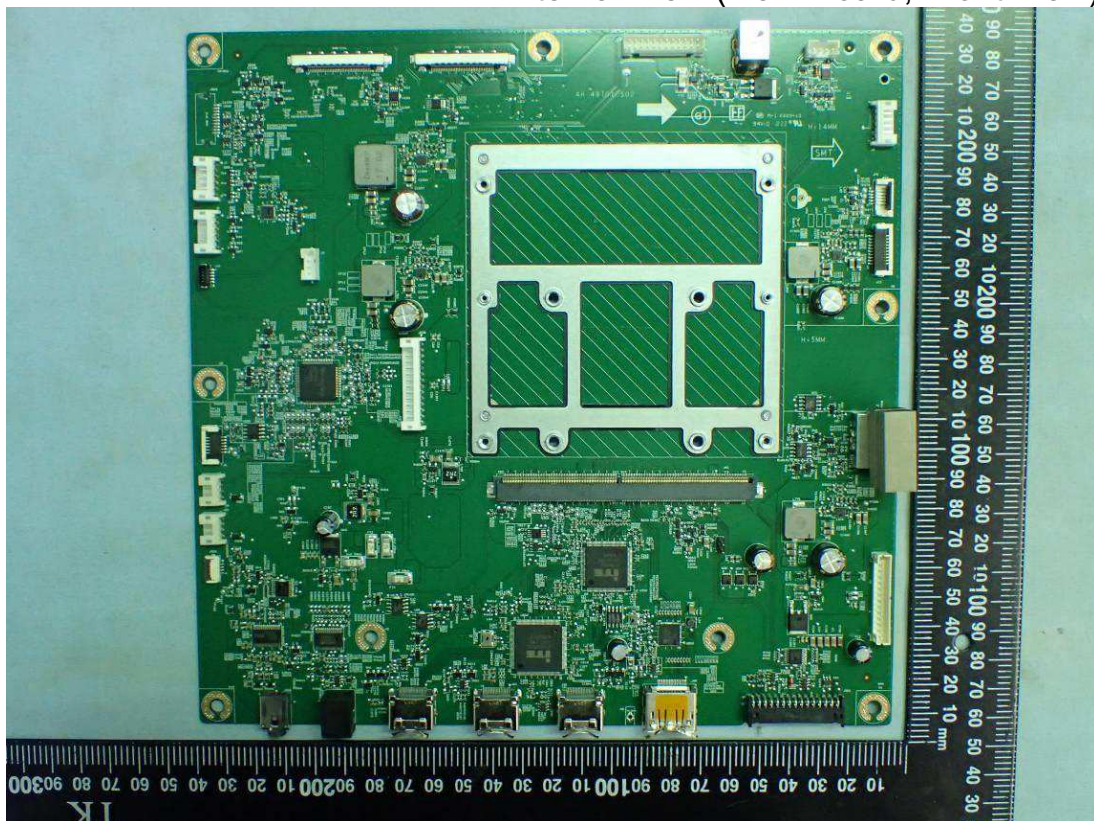


Figure 41
Internal View (Main Board, Back View)

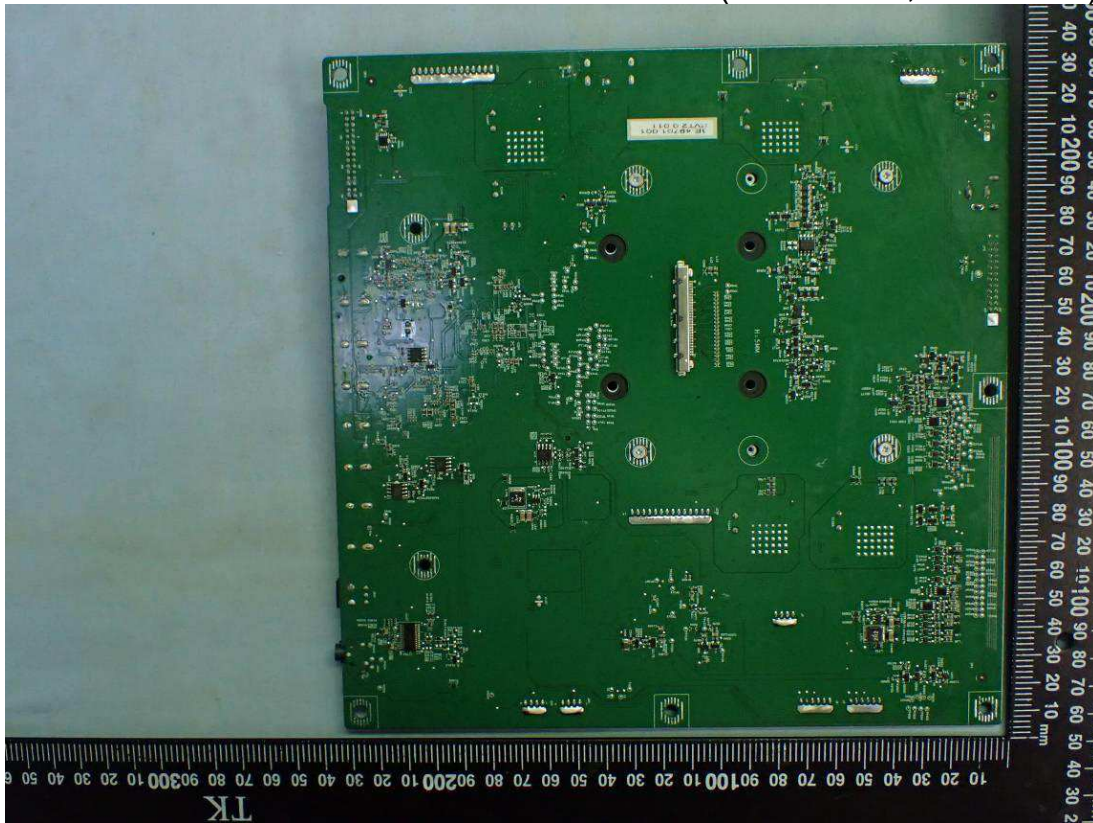


Figure 42
Internal View (Control Board, Back View)

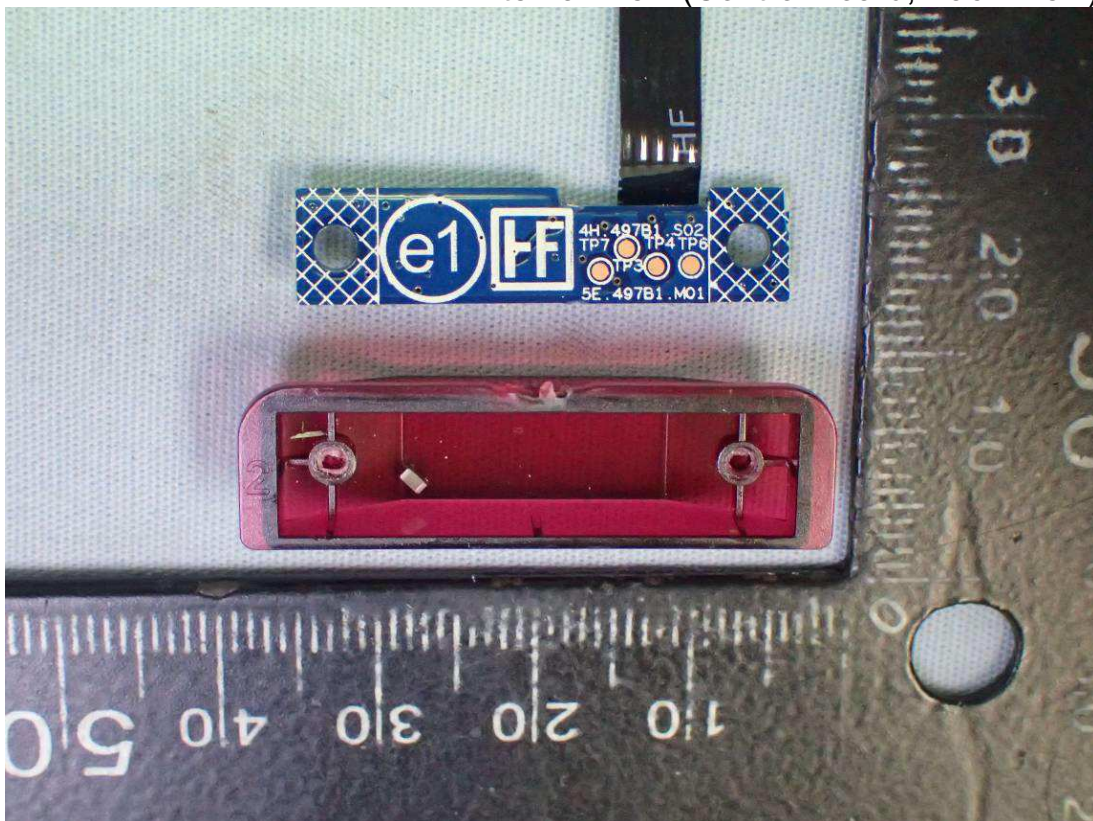


Figure 43
Internal View (Control Board, Front View)

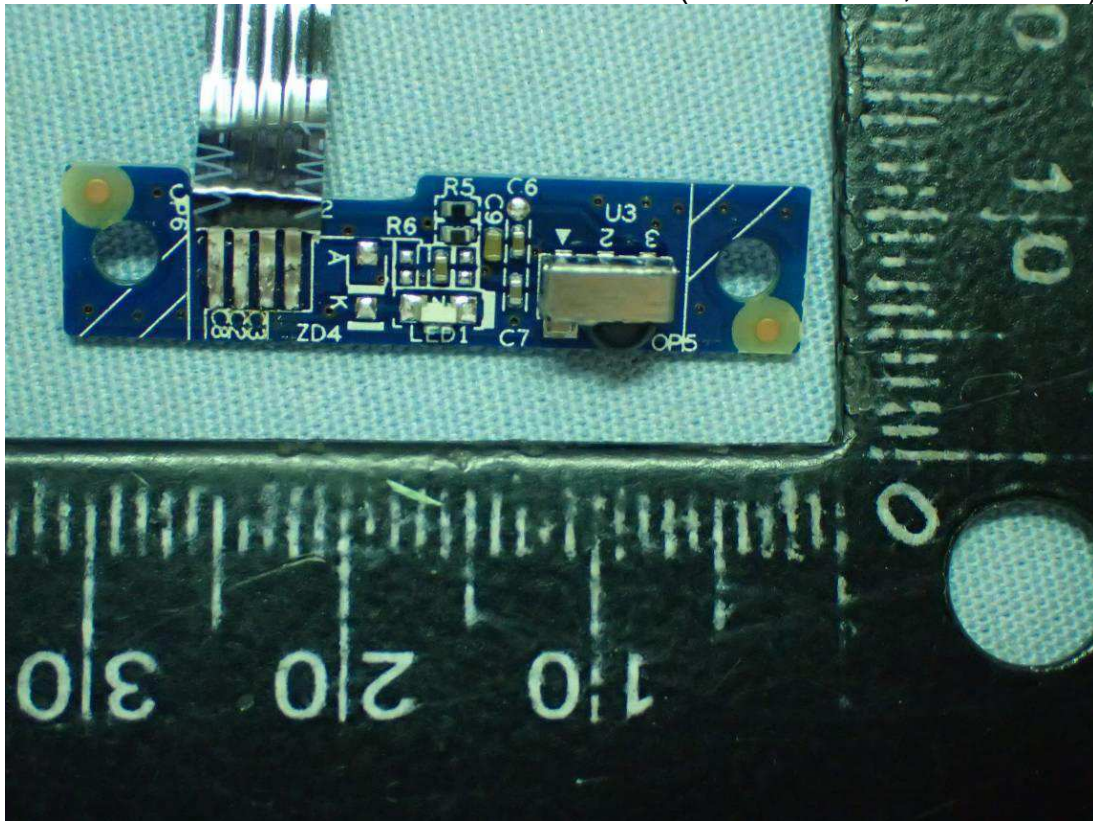


Figure 44
Internal View (LCD Panel, Label View)

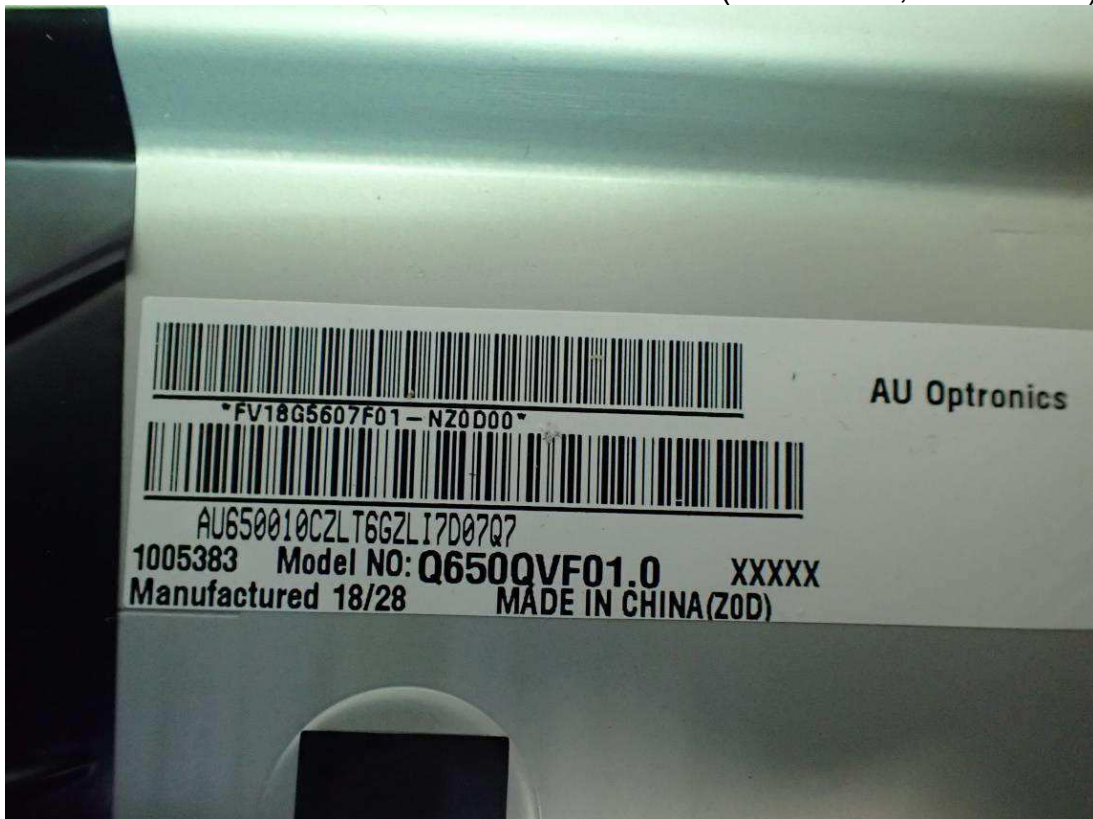


Figure 45
Internal View (RF Antenna Location)

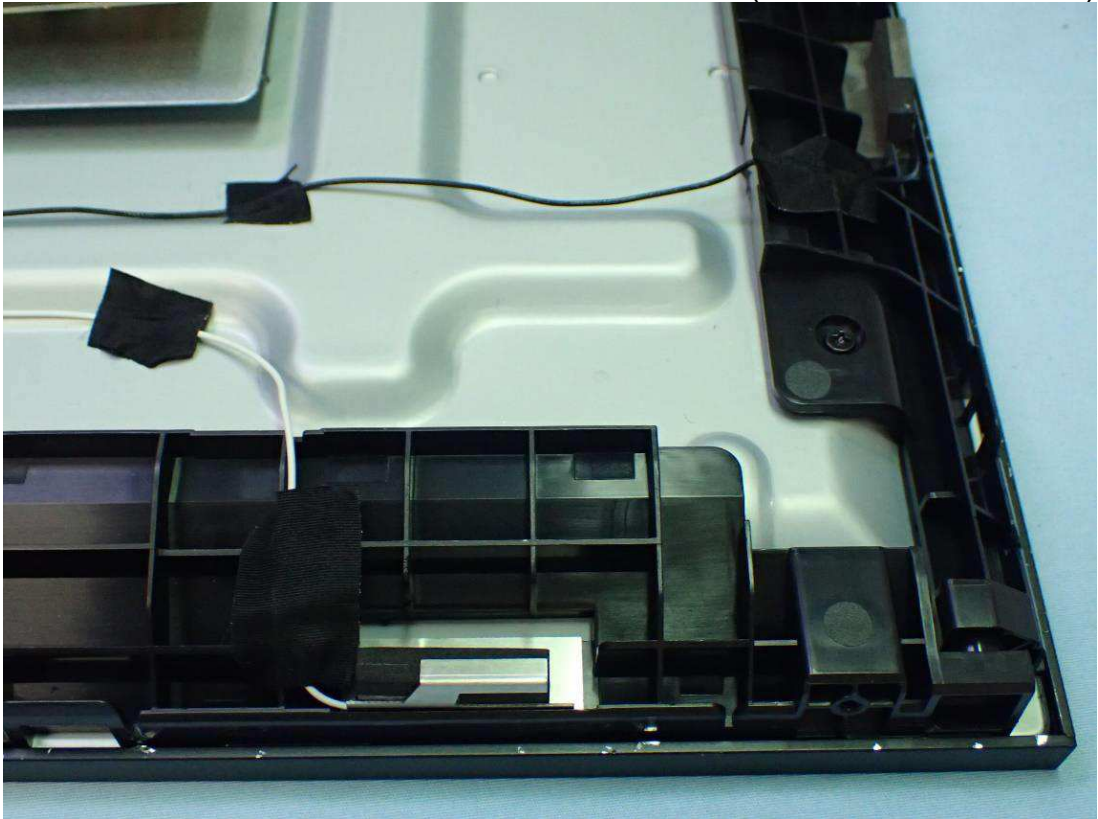


Figure 46
Internal View (Main Antenna)

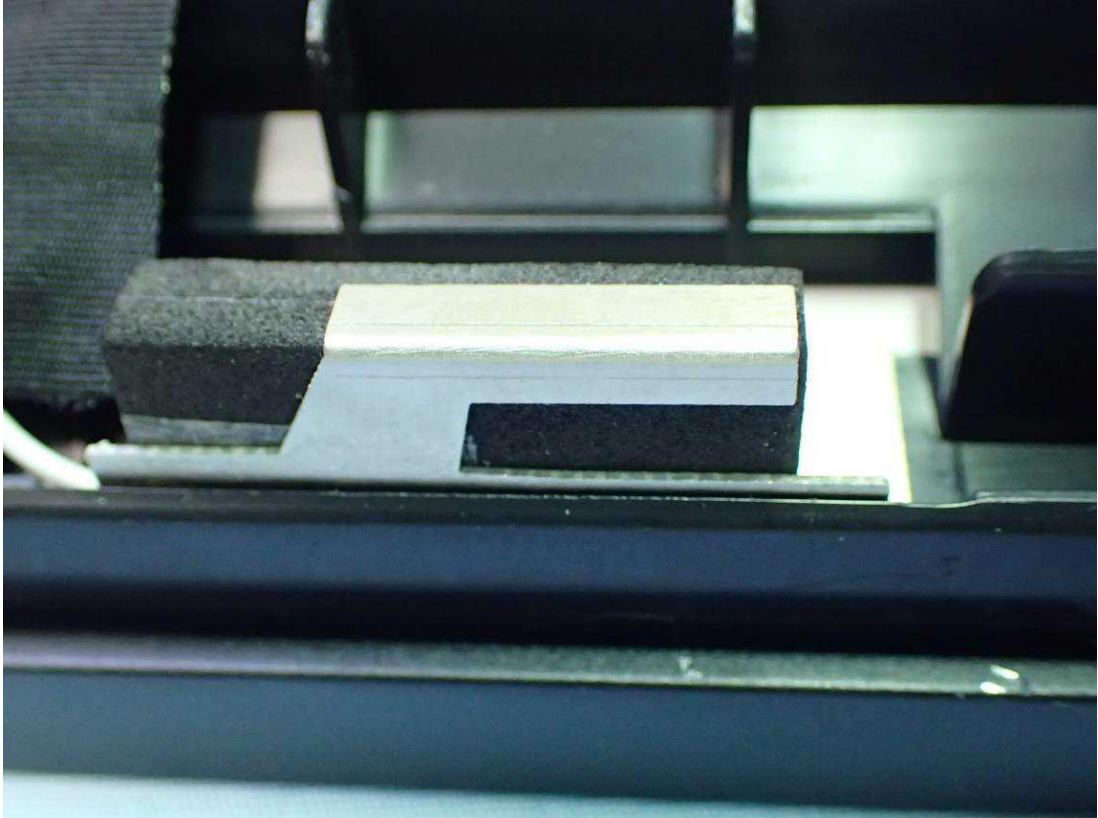


Figure 47
Internal View (AUX Antenna)



Figure 48
Internal View (Control Board)

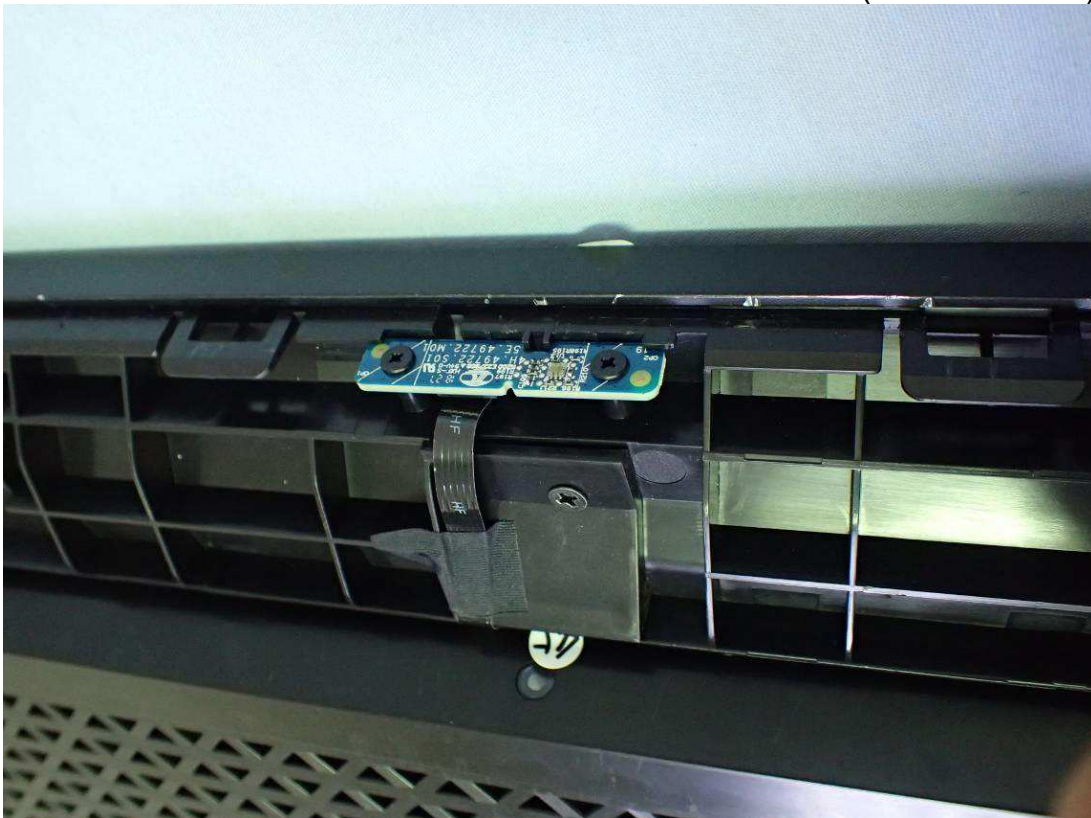


Figure 49
Internal View (Control Board, Front View)

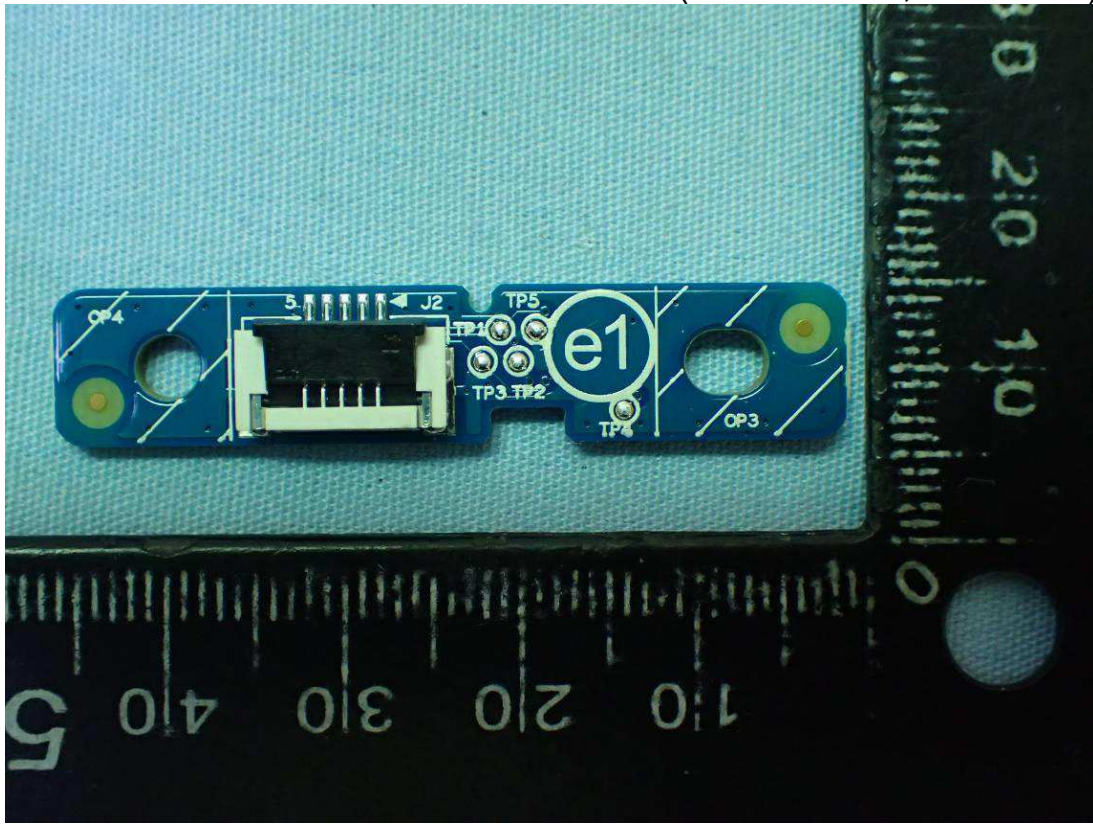


Figure 50
Internal View (Control Board, Back View)

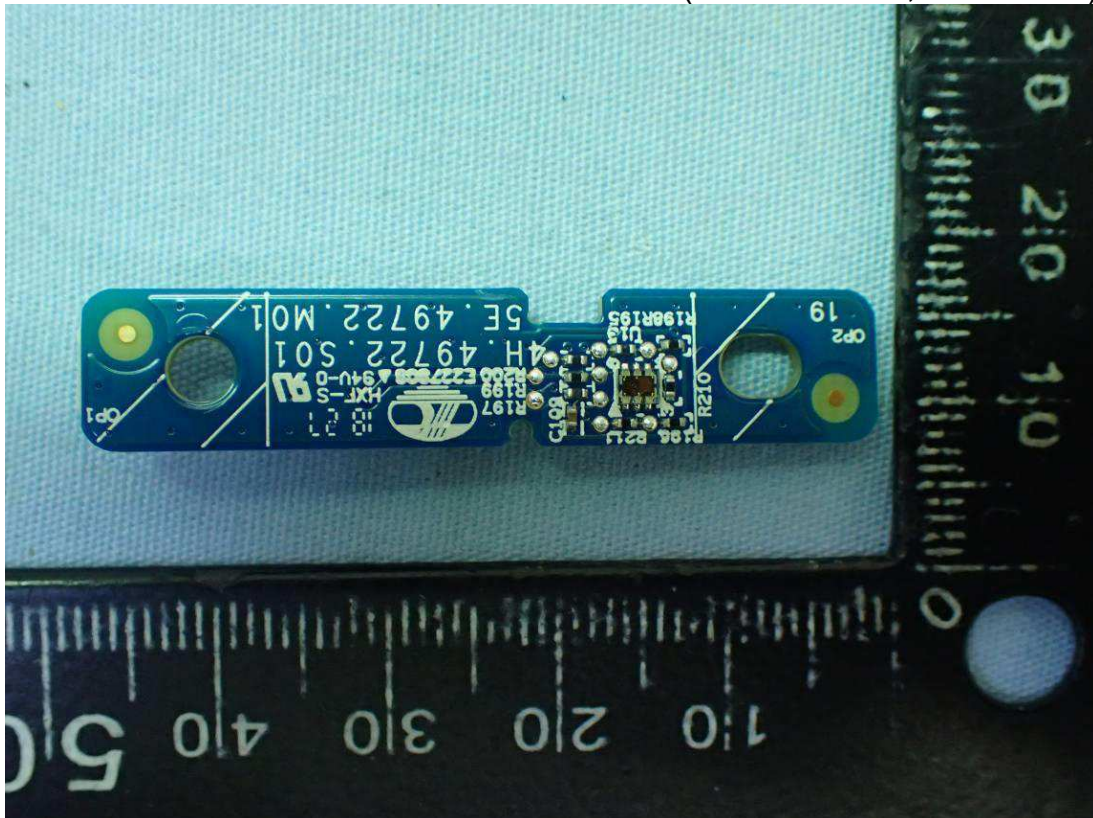


Figure 51
SHIELD Remote, Front View

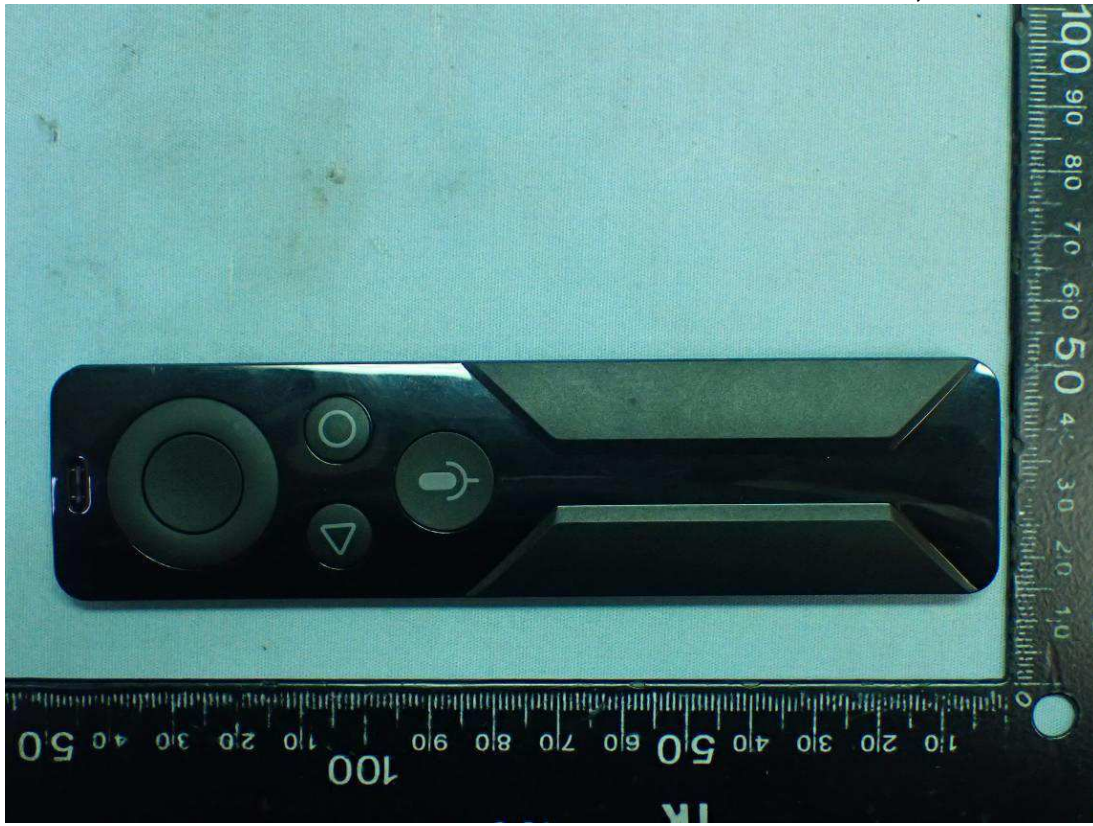


Figure 52
SHIELD Remote, Back View

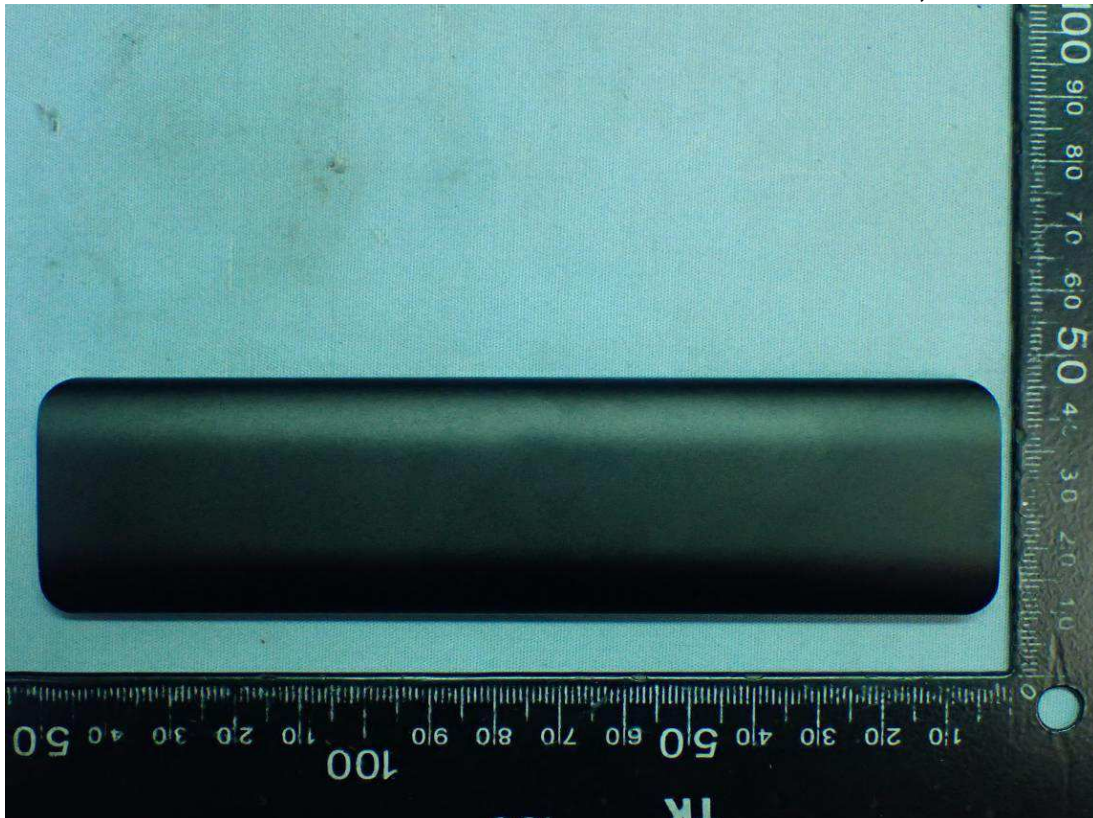


Figure 53
HDMI Cable

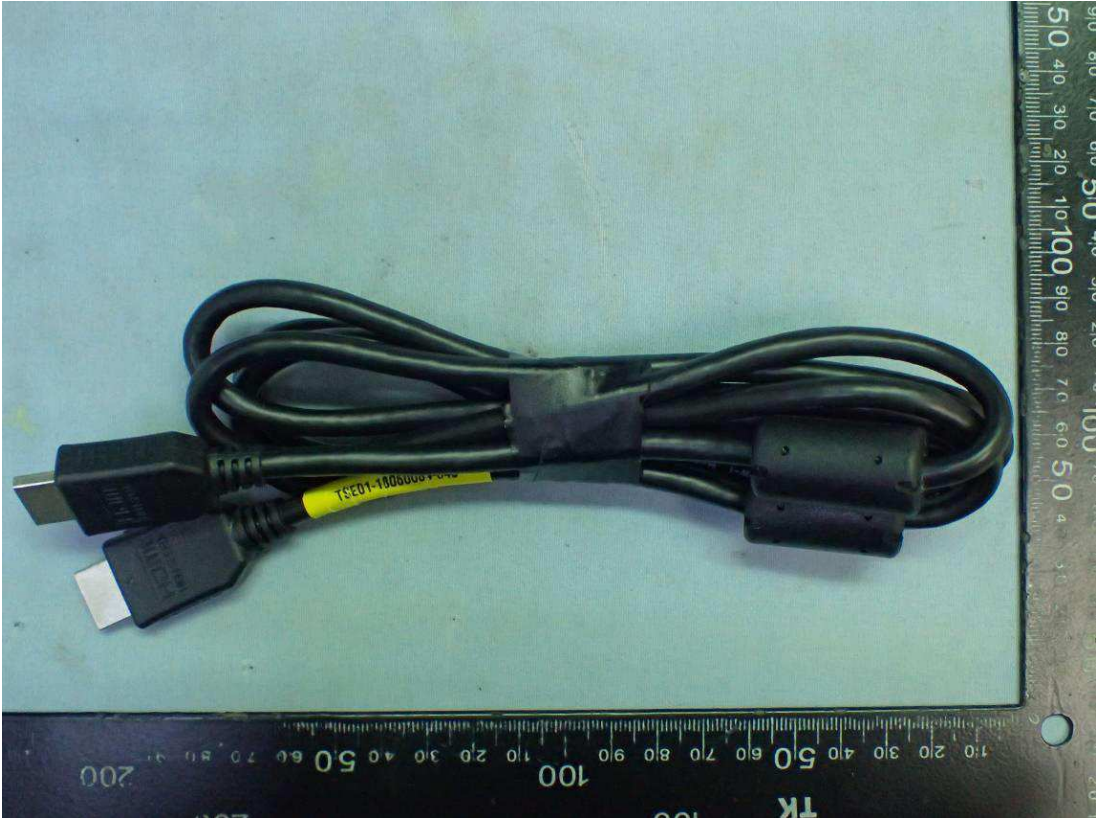


Figure 54
DP Cable

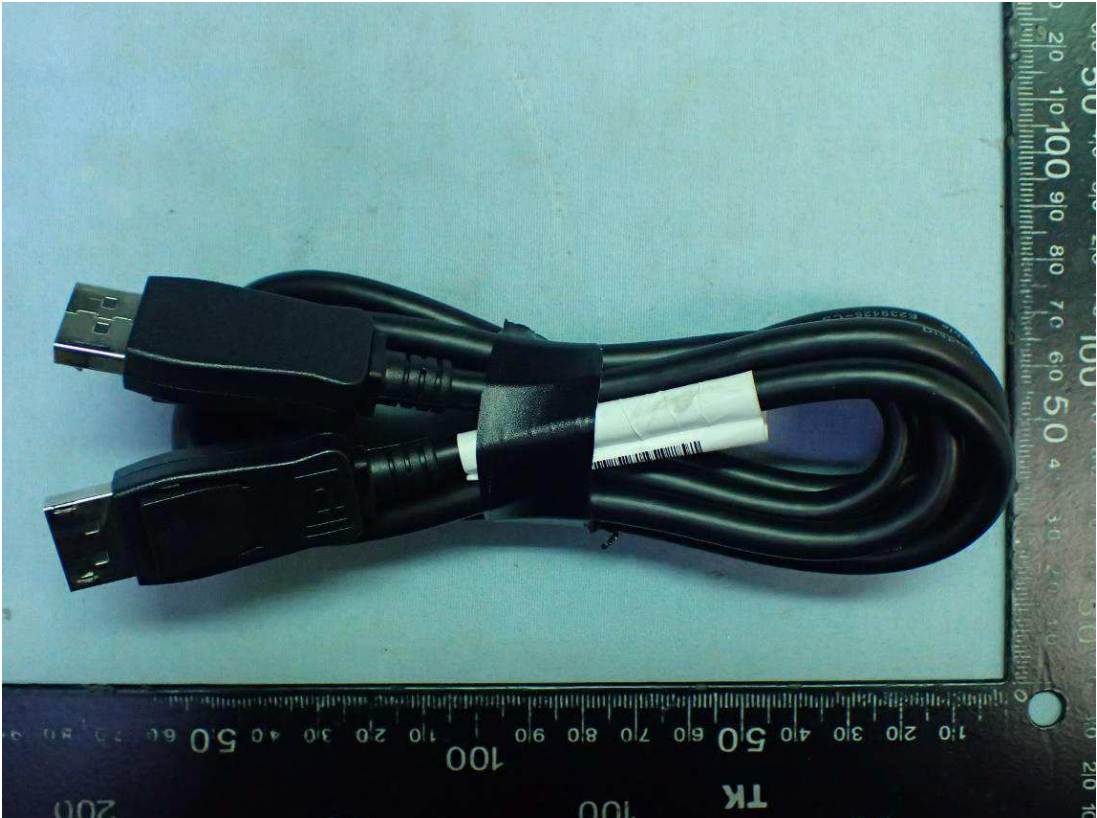


Figure 55
AC Power Cord

