



DT-08

User Guide

Contents

Copyright	2
Disclaimer	2
Regulatory Information	3
Safety Information	6
Getting Started	7
Device Overview	7
Charging the Device	8
LED Status Description	10
Powering the Device On and Off	11
Suspending the Device	11
Using the Device	12
Viewing System Information	12
Using Wi-Fi	12
Using Bluetooth	12
Using NFC	13
Adjusting Volume	13
Adjusting Display Settings	13
Adjusting Sleep Control Settings	13
Hidding Screen & Display Items	14
Changing Battery Charging Policy	14
Changing Language	14
Adjusting Date & Time	14
Performing System Backup	15
Performing System Restore	16
Resetting the Device	16

Copyright

Copyright© 2015 Group Sense Mobile-Tech Limited. All rights reserved. No part of this document may be reproduced, distributed, translated, or stored in any form without the prior written permission of Group Sense Mobile-Tech Limited. All brands and product names mentioned herein may be trademarks or registered trademarks of their respective owners. Products specifications are subject to change without prior notice.

Disclaimer

The contents of this document are provided as is. Group Sense Mobile-Tech Limited makes no representations or warranties with respect to the contents herein and specifically disclaims any express or implied warranties of merchantability or fitness for any particular purpose. Group Sense Mobile-Tech Limited reserves the right to revise this document at any time without prior notice.

Regulatory Information

FCC & IC Statements

This equipment complies with Part 15 of the FCC Rules (FCC ID: VRI-B203). Operation is subjected to the following two conditions: (1) This device may not cause harmful interference, and (2) this device must accept any interference received, including interference that may cause undesired operation.

This equipment has been tested and found to comply with the limits for a Class B digital device, pursuant to part 15 of the FCC Rules. These limits are designed to provide reasonable protection against harmful interference in a residential installation. This equipment generates uses and can radiate radio frequency energy and, if not installed and used in accordance with the instructions, may cause harmful interference to radio communications. However, there is no guarantee that interference will not occur in a particular installation. If this equipment does cause harmful interference to radio or television reception, which can be determined by turning the equipment off and on, the user is encouraged to try to correct the interference by one or more of the following measures:

- Reorient or relocate the receiving antenna.
- Increase the separation between the equipment and receiver.
- Connect the equipment into an outlet on a circuit different from that to which the receiver is connected.
- Consult the dealer or an experienced radio/TV technician for help.

Any change or modification not expressly approved by the party responsible for compliance could void the user's authority to operate the equipment may not ensure compliance with FCC RF exposure guidelines.

CE Statement

This device has been tested and found to comply with the following EU Directives:

- R&TTE Directive (1999/5/EC)
- EMC Directive (2004/108/EC)
- Low Voltage Directive (2006/95/EC)

The assessment of compliance of the device was performed according to the following European standards:

- EMC: EN 301 489-1 /-3/-17
- Health: EN 50566 / EN62209-2 / EN 62479
- Safety: EN 60950-1
- Radio: EN 300 328 / EN301 893 / EN 300 440 / EN 300 330

Hereby, Group Sense Mobile-Tech Limited declares that this device is in compliance with the essential requirements and other relevant provisions of Directive 1999/5/EC.

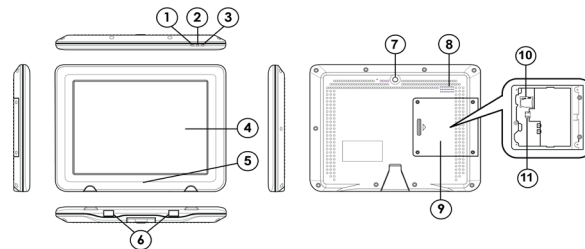
Safety Information

Please read the following information carefully before using the device for the first time, and keep this User Guide in a safe place for future reference.

- Always treat the device with care and keep it in a clean and dust-free environment.
- Do not expose the device to extremely hot, cold or humid environment. The operation temperature is from -10°C to 50°C .
- Do not use the device in wet or rainy conditions.
- Do not charge the device in extremely hot ($> 45^{\circ}\text{C}$) or cold conditions ($< 0^{\circ}\text{C}$).
- Do not attempt to disassemble or modify the device including the charger.
- Do not operate the device when your hands are wet.
- Do not insert foreign objects into the openings of the device.
- Use only the adaptor and battery approved for the device.
- The adaptor shall be installed near the device and shall be easily accessible.
- Do not use the adaptor if the power cord or plug is damaged.
- Install the cradle on a flat and stable surface.
- Do not disassemble, crush or puncture the battery.
- Do not expose the battery to high temperatures.
- Do not let battery terminals touch other metal objects that could lead to short-circuit of the battery.
- Do not dispose of the battery in fire or water.
- Dispose of used battery properly according to local laws and regulations.
- The device shall only be connected to a USB interface of version 2.0 or higher. The connection to so called power USB is prohibited.

Getting Started

Device Overview

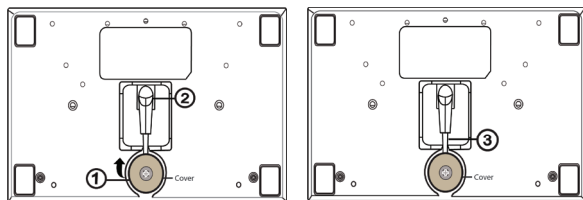


No.	Item	Description
1	Power LED	Power status indicator
2	Charging LED	Charging status indicator
3	WLAN LED	WLAN status indicator
4	Touch screen	LCD with capacitive touch screen
5	NFC Reader	Scanning area for NFC tags
6	Charging plates	Contact plates for charging through the cradle
7	Power key	Press and hold to turn device on or off
8	Speaker	Mono speaker
9	I/O port cover	Remove the cover to access the MicroSD card connector and Micro-USB connector.
10	Memory card slot	MicroSD card connector
11	USB connector	Micro-USB connector

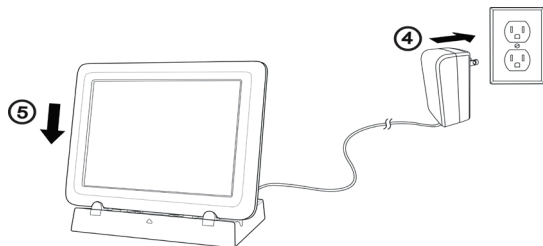
Charging the Device

Charging with the Single Slot Charger

1. Unfasten the power cable cover screw with a screwdriver, and remove the cover.
2. Connect the AC/DC adaptor to the power connector of the charging cradle.
3. Tighten the power cable cover screw to hold the cable in position.



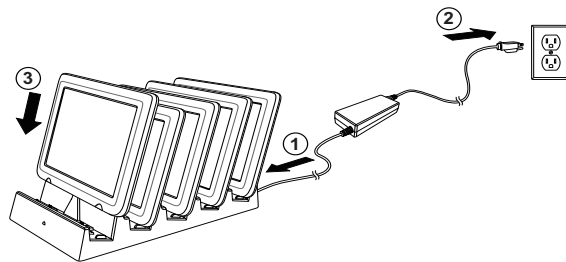
4. Plug the AC/DC adaptor into a suitable power socket. The cradle power LED will turn green when power is supplied to the cradle.
5. Insert the device to the charging slot. The device charging LED will flash orange while charging, and turn solid orange when fully charged.



Charging with the Multi-slot Cradle

To charge the device with the multi-slot charging cradle:

1. Connect the AC/DC adaptor to the power connector of the charging cradle.
2. Plug the AC/DC adaptor into a suitable power socket. The cradle power LED will turn green when power is supplied to the cradle.
3. Insert the device to the charging slot. The device charging LED will flash orange while charging, and turn solid orange when fully charged.



LED Status Description

Power LED

LED colour	Description
Green	Device On
Off	Device Off

Charging LED

LED colour	Description
Flashing orange	Charging
Solid Orange	Fully Charged
Solid Red	Battery low
Off	No Charging

WLAN LED

LED colour	Description
Flashing blue slowly	WLAN connected
Flashing blue quickly	WLAN not connected
Off	Wi-Fi turned off

Powering the Device On and Off

Powering on the Device

Press and hold the Power key for 2 seconds to power on the device.

Powering off the Device

Press and hold the Power key for 2 seconds, and follow the screen instructions to power off the device.

Suspending the Device

If the device is on, press the Power key once to suspend the device (i.e. entering sleep mode), saving battery power.

To resume operation from sleep mode, press the Power key or click the touch screen.

Using the Device

Viewing System Information

1. Select **Application drawer > Settings > About tablet.**
2. Scroll to view Model number, Android version, Kernel version, and Build number.
3. Click **Status** to view Serial number, Battery status, Battery level, IP address, Wi-Fi MAC address, Bluetooth address, and Up time.

Using Wi-Fi

To connect to a Wi-Fi network:

1. Select **Application drawer > Settings > Wi-Fi.**
2. Slide the Wi-Fi On/Off switch to the ON position.
3. Click Wi-Fi, and then select a network listed
4. Input the password when prompted.
5. Select the **Lock Single Network** checkbox to lock the device to the selected network.
6. Select **Show advanced options** to enter static IP settings/ Proxy settings if needed.
7. Click **Connect.**

Using Bluetooth

To connect to a Bluetooth device:

1. Select **Application drawer > Settings > Bluetooth.**
2. Slide the Bluetooth On/Off switch to the ON position. Ensure the other Bluetooth device is set to discovery mode within range.
3. Click **Bluetooth**, and select the required device under **AVAILABLE DEVICES.** Click **SEARCH FOR DEVICES** if it does not appear in the list.
4. Input PIN when prompted, and then click **OK.**
5. Input the same PIN on the selected device if prompted.
6. Upon completing the pairing, the selected device is displayed under **PAIRED DEVICES.**

Using NFC

To turn on the NFC feature:

1. Select **Application drawer > Settings > More.**
2. Select the NFC checkbox to turn on NFC.

Note: Position the tag within 2mm of the NFC reader area to ensure successful scans.

Adjusting Volume

1. Select **Application drawer > Settings > Sound > Volumes.**
2. Drag the slide bar to adjust the volume.

Adjusting Display Settings

Adjusting Brightness

1. Select **Application drawer > Settings > Display > Brightness.**
2. Drag the slide bar to adjust the backlight.

Adjusting Sleep Mode Setting

To change the screen setting in sleep mode:

1. Select **Application drawer > Settings > Display > Sleep mode setting.**
2. Select Sleep or Screen dim to turn off or dim screen

Adjusting Sleep Mode Timeout

1. Select **Application drawer > Settings > Display > Sleep.**
2. Select the idle period before entering sleep mode.

Adjusting Sleep Control Settings

To enable the sleep control options:

1. Select **Application drawer > Settings > Display > Sleep control.**
2. Check the checkbox to enable the below sleep control options, and then click **OK** to exit.
 - **Touch screen to turn on device:** Click the screen to exit sleep mode.

- **Turn to sleep when put in to drawer:** Enter sleep mode upon returning to the charging drawer.
- **Turn to sleep when put in to cradle:** Enter sleep mode upon returning to the charging cradle.

Hiding Screen & Display Items

To configure the screen display options (e.g. hide system bar, virtual buttons) in Admin mode and User mode:

1. Select **Application drawer > Settings > Display > Admin mode hide configuration / User mode hide configuration**.
2. Check the checkbox to enable the display options, and then click **OK** to exit.

Changing Battery Charging Policy

To adjust the charging trigger level:

1. Select **Application drawer > Settings > Battery**.
2. Select **Smart charging > Smart charging settings**.
3. Select the checkbox to enable smart charging.
4. Drag the slide bar to adjust the charging trigger level, and then click **OK**.

Changing Language

1. Select Application drawer > Settings > Language & input
2. Select Language.
3. Select a language

Adjusting Date & Time

1. Select **Application drawer > Settings > Date & time**.
2. To set the date and time manually, adjust **Set date**, **Set time**, and **Select time zone** accordingly.

Performing System Backup

To perform system backup:

1. Select **Application drawer > System Backup**.
2. Select the **Backup** button.
3. Edit the **Backup path** if needed. This is the folder name of the backup image.
4. Select Internal storage or SD card from the Backup Location drop down menu.
 - OS:** Backup OS only.
 - DATA:** Backup installed applications, settings, and data.
 - OS+DATA:** Backup OS, installed applications, settings, and data.
5. Select a backup data option from **Backup selection** drop down menu.
6. To restore the back up image on the current device only, select the **Need to match serial no.** checkbox.
7. Select **Start**, and then click **OK** when prompted.
8. The device reboots automatically upon completing the backup.

Note:

- Close all active programs before performing backup or restore.
- The backup image folders are grouped in a folder named **backup**.

Performing System Restore

To restore the system from a backup image:

1. Select **Application drawer > System Backup**
2. Select the **Restore** button.
3. Select the backup image location from **Backup Location** drop down menu.
4. Select the backup image file from the **Restore content** menu.
5. Select **Start**, and then click **OK** when prompted.
6. The device reboots automatically upon completing the restore

Note:

- The backup image folder must be placed in the **backup** folder.
- When backing up only the data, the image should be restored on the same firmware version. Restoring on a different firmware version might create instability or corruption.

Resetting the Device

Soft Reset

Soft reset shuts down and reboots the device. It preserves installed applications, settings, and saved data.

To perform a soft reset, press and hold the power key for 8 seconds.

Clean Reset

Clean reset restores the system to factory default by erasing all installed applications, settings and data

To perform a clean reset

1. Select **Application drawer > Settings > Backup & reset**.
2. Select **Factory data reset**.

Note:

Clean reset will not erase the data in the internal SD card partition. To erase the internal SD card contents, select **Application drawer > Settings > Storage > Erase device storage**.

Copyright© 2015 Group Sense Mobile-Tech Limited.

All rights reserved.

<http://www.gsml.com.hk>

The SAR limit of USA (FCC) is 1.6 W/kg averaged over one gram of tissue. Device types DT-08 (FCC ID: VRI-B203) has also been tested against this SAR limit. The highest SAR value reported under this standard during product certification for use when properly worn on the body is 0.684 W/kg.

. This device was tested for

typical body-worn operations with the back of the handset kept 0mm from the body. To maintain compliance with FCC RF exposure requirements, use accessories that maintain a 0mm separation distance between the user's body and the back of the handset. The use of belt clips, holsters and similar accessories should not contain metallic components in its assembly. The use of accessories that do not satisfy these requirements may not comply with FCC RF exposure requirements, and should be avoided.

FCC statements:

This device complies with part 15 of the FCC rules. Operation is subject to the following two conditions: (1) this device may not cause harmful interference, and (2) this device must accept any interference received, including interference that may cause undesired operation.

NOTE: The manufacturer is not responsible for any radio or TV interference caused by unauthorized modifications or changes to this equipment. Such modifications or changes could void the user's authority to operate the equipment.

NOTE: This equipment has been tested and found to comply with the limits for a Class B digital device, pursuant to part 15 of the FCC Rules. These limits are designed to provide reasonable protection against harmful interference in a residential installation. This equipment generates uses and can radiate radio frequency energy and, if not installed and used in accordance with the instructions, may cause harmful interference to radio communications. However, there is no guarantee that interference will not occur in a particular installation. If this equipment does cause harmful interference to radio or television reception, which can be determined by turning the equipment off and on, the user is encouraged to try to correct the interference by one or more of the following measures:

- Reorient or relocate the receiving antenna.
- Increase the separation between the equipment and receiver.
- Connect the equipment into an outlet on a circuit different from that to which the receiver is connected.
- Consult the dealer or an experienced radio/TV technician for help.

The users has to turn off the 5GHz WiFi in outdoor environment