



Sage Co., Ltd.  
2F,KY- Bldg. 2-24 Sumiyoshi-Cho Naka-Ku  
Yokohama-City Kanagawa Pref  
231-0013 Japan

User manual for

# BLE Sensor JSG-S006

Ver 1.0

**Sage Co.,Ltd.**

April 21, 2022

**Date: 2022/4/21**

**Contact Information**

Taiki Urasaki

Engineer

[t.urasaki@jsage.co.jp](mailto:t.urasaki@jsage.co.jp)

Sage Co., Ltd.  
2F,KY- Bldg. 2-24 Sumiyoshi-Cho Naka-Ku  
Yokohama City KanagawaPref  
231-0013 Japan



Sage Co., Ltd.  
2F,KY- Bldg. 2-24 Sumiyoshi-Cho Naka-Ku  
Yokohama-City Kanagawa Pref  
231-0013 Japan

## Contents

---

### GENERAL

- 1.JSG-S006 date sheet
2. System Block diagram
3. Appearance
4. Components
5. Installation

## General

---

Purpose of this Guide is to install the devices and to describe the related function how to use them for the Dealers and Mechanic of contracting company. The functions are necessary to operate the initial setup and maintain an appropriate usage of the App.

### FCC Statement :

Any changes or modifications not expressly approved by the party responsible for compliance could void the User's authority to operate the equipment.

This Device complies with part 15 of the FCC Rules. Operation is subject to the following two conditions: (1) This Device may not cause harmful interference, and (2) this Device must accept any interference received, including interference that may cause undesired operation.

### FCC Radiation Exposure Statement:

This Device complies with FCC radiation exposure limits set forth for an uncontrolled environment. This equipment should be installed and operated with minimum distance 8 inches (20cm) between the radiator & User's body.

This transmitter must not be co-located or operating in conjunction with any other antenna or transmitter.

### Class B digital device:

This equipment has been tested and found to comply with the limits for a Class B digital device, pursuant to part 15 of the FCC Rules. These limits are designed to provide reasonable protection against harmful interference in a residential installation. This equipment generates, uses and can radiate radio frequency energy and, if not installed and used in accordance with the instructions, may cause harmful interference to radio communications. However, there is no guarantee that interference will not occur in a particular installation. If this equipment does cause harmful interference to radio or television reception, which can be determined by turning the equipment off and on, the user is encouraged to try to correct the interference by one or more of the following measures:

- Reorient or relocate the receiving antenna.
- Increase the separation between the equipment and receiver.
- Connect the equipment into an outlet on a circuit different from that to which the receiver is connected.
- Consult the dealer or an experienced radio/TV technician for help.



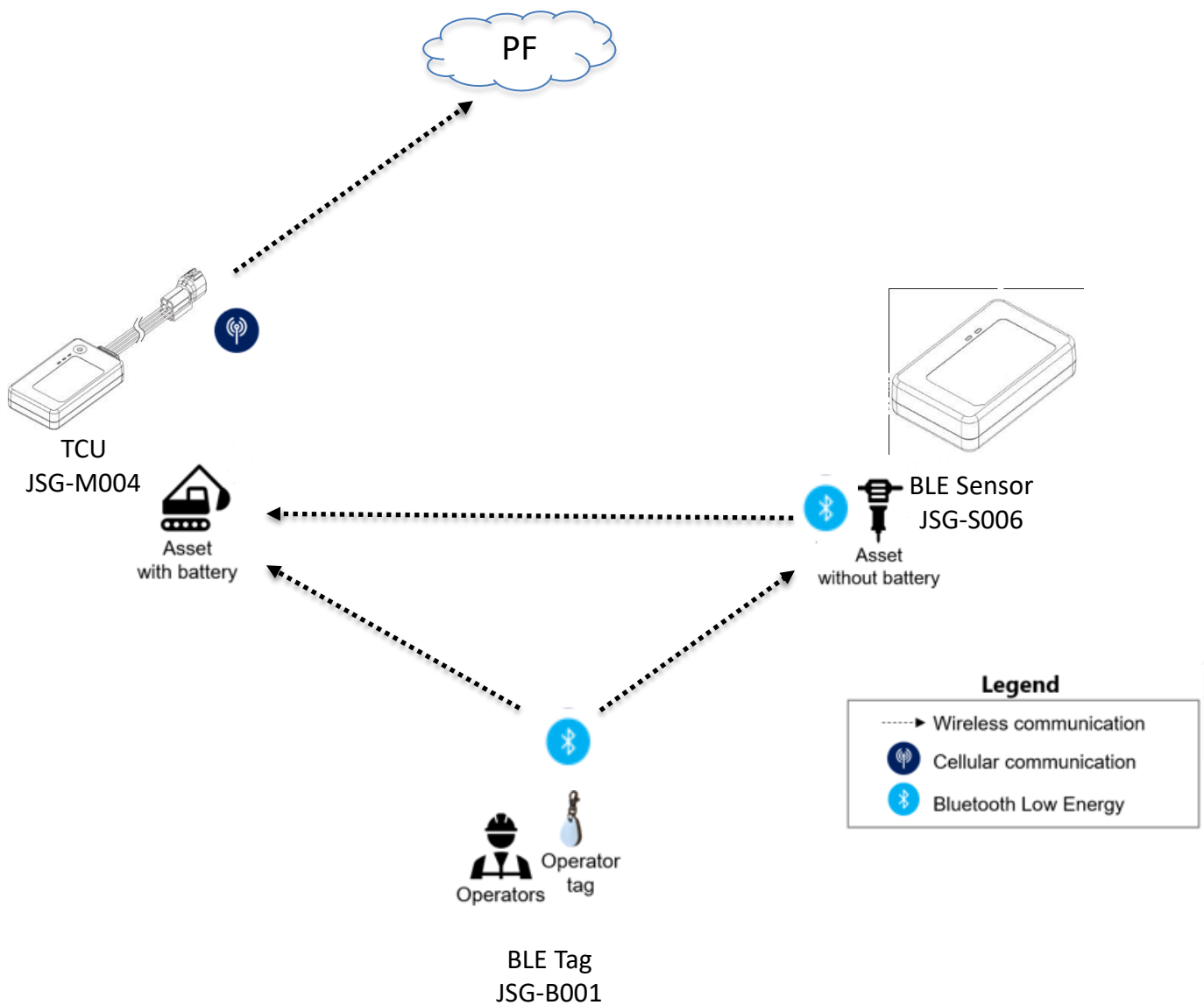
Sage Co., Ltd.  
2F,KY- Bldg. 2-24 Sumiyoshi-Cho Naka-Ku  
Yokohama-City Kanagawa Pref  
231-0013 Japan

## 1 JSG-M004 data sheet

---

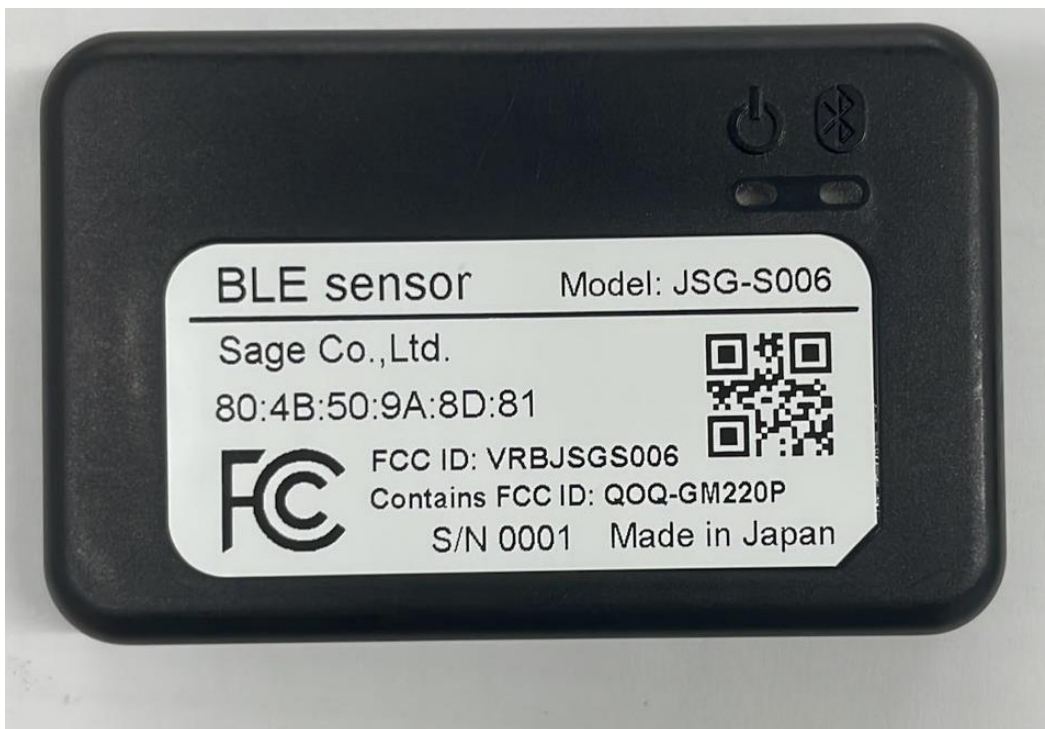
Physical	
Size	W65xD40xH20 mm
Weight	50g
Environment	
Operating temperature	-20 degrees C to +60 degrees C
Storage temperature	-30 degrees C to +80 degrees C
Performance	
Maximum electric power consumption	2mA / 3 V
Standby electric power consumption	1mA / 3V
Version	
Hardware version	1.00
Software version	1.00

## 2 System Block diagram



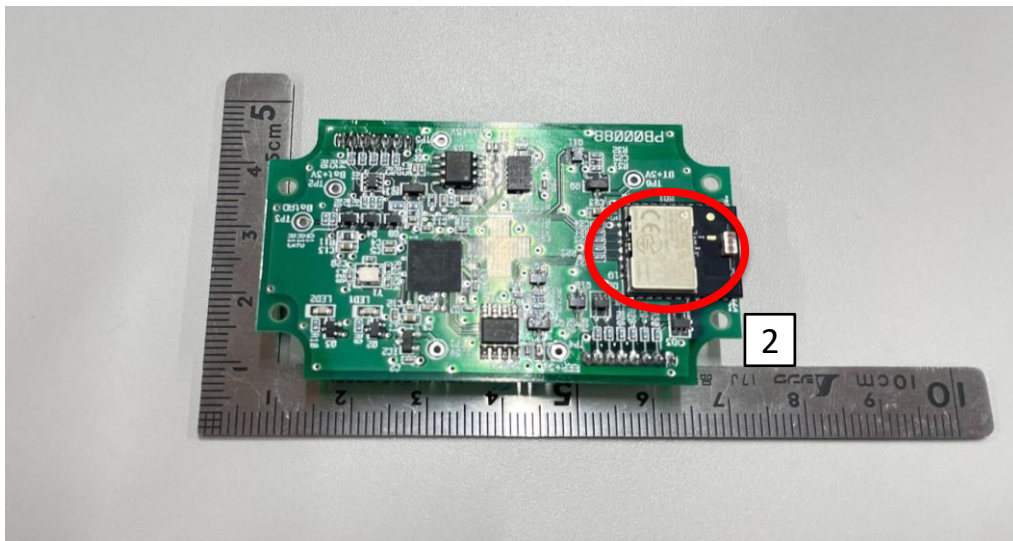
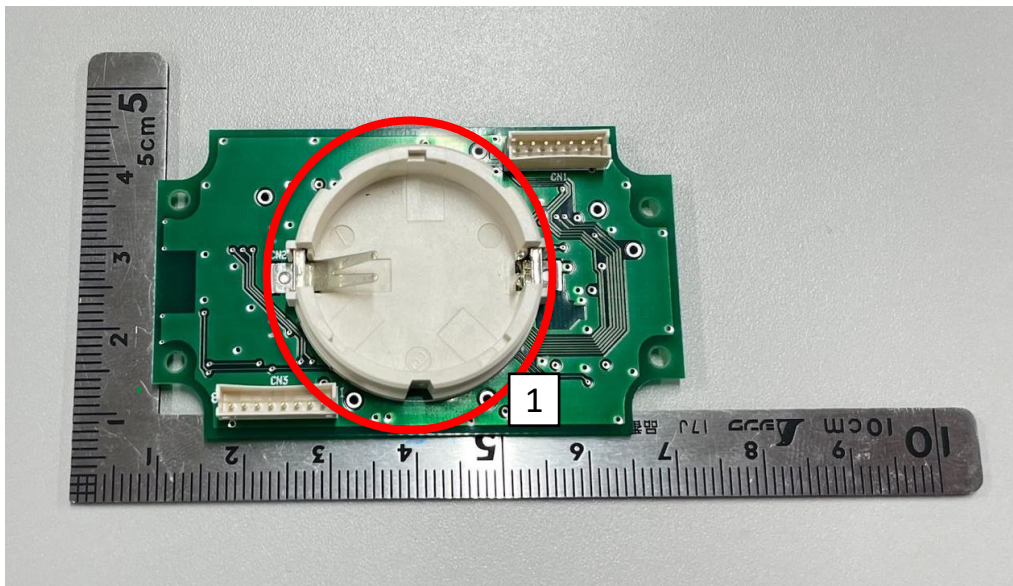
### 3 Appearance

---



## 4 Components

---



- 1: Power (CR2477)
- 2: BLE Module

## 5 Installation

---

BLE is installed on the engine cover covering the flywheel.  
BLE detects engine on/off state by measuring magnetic field using the internal magnetic sensor.

This product used at a distance 8 inches (20cm) or more from the User's body.  
Since this product is fixed to the construction machine with magic tape, it is used with the human body at a distance of 8 inches or more.

