

## OVERVIEW

The nLight Handheld Programmer uses a Bluetooth Low Energy (BLE) Radio Module to allow wireless communication between the local nLight zone and iOS/Android smart phone application. This device offers two RJ-45 ports to be placed in any location on a local nLight zone, and the unit powers up directly off of the nLight bus. The smart phone application offers secure pairing with the BLE device when within range (range specifications below), and once connected can be used for identifying and programming devices within that zone.

## FEATURES

- Communicates two-way with local nLight network and iOS/Android Smart Phone Application
- Remotely Configurable/Upgradeable
- Push-Button Programmable
- Inline Wired – No Mounting Required
- Self-powered from nLight bus

## SPECIFICATIONS

Size (Inline Wired):	2.54"H x 1.98"W x 1.00"D (6.45 cm x 5.03 cm x 2.54cm)
Weight:	2oz
Color:	Clear (blue LED)
nLight Network Ports:	2 RJ-45
Bus Power Consumption:	~7 mA
Wires:	None
Operating Temp:	Standard: 14°-160°F (-10° to 71°C) LT Option: -40° to 160°F (-40° to 71°C)
Relative Humidity:	Standard: 20% to 75% non-condensing LT Option 20 to 90% non-condensing
Wireless Frequency:	BLE
Wireless Range Guidelines: Line of Site:	~50 ft
	Plasterboard/Dry Wood: ~30 ft
	Concrete: ~15 ft
RoHS Compliant, Title 24 Component	

## Warranty

Five-year limited warranty. Complete warranty terms located at:

[www.acuitybrands.com/CustomerResources/Terms\\_and\\_conditions.aspx](http://www.acuitybrands.com/CustomerResources/Terms_and_conditions.aspx)

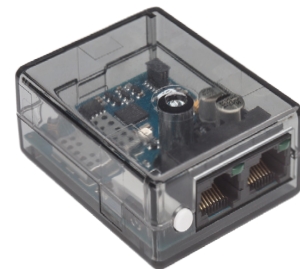
Note: Actual performance may differ as a result of end-user environment and application.

Specifications subject to change without notice.

**AcuityControls**

nLight®

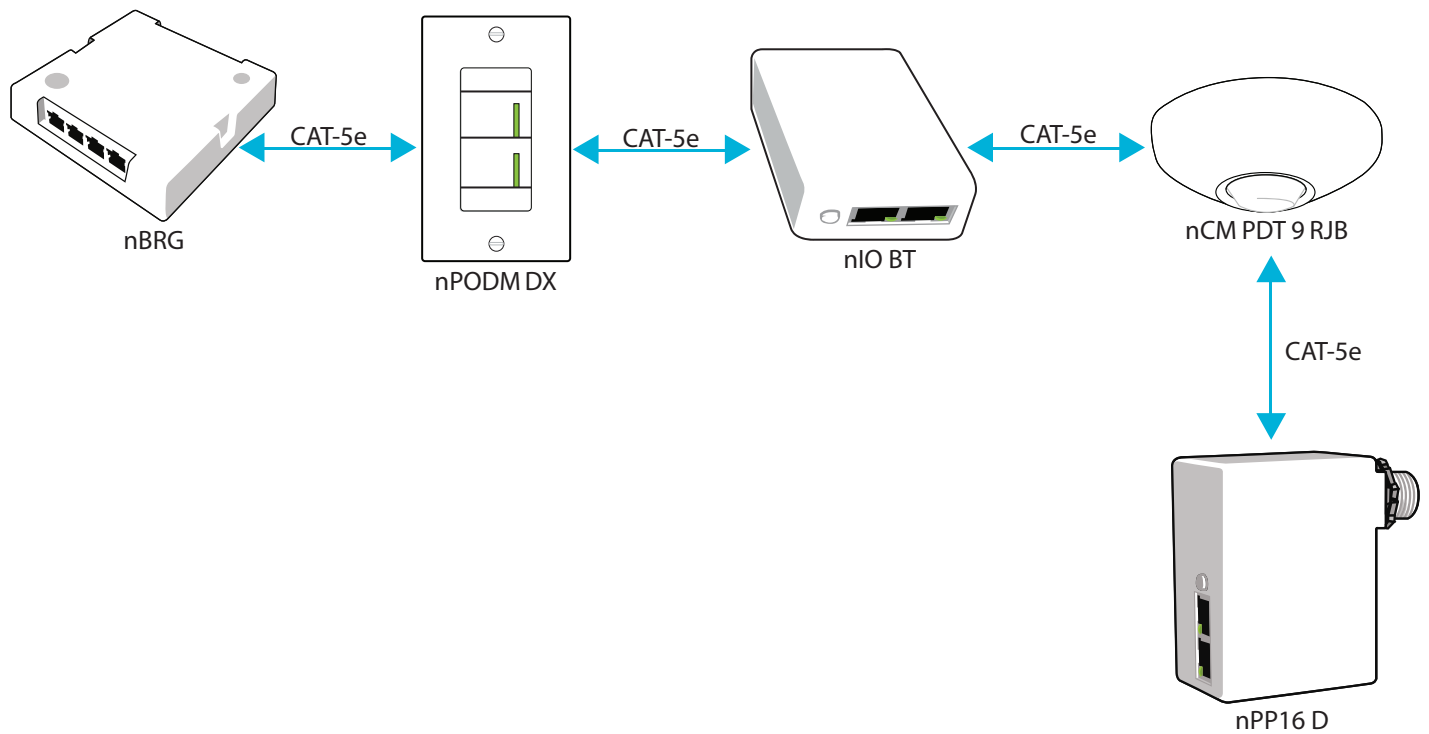
## nIO BT Handheld Programmer



## ORDERING INFORMATION

nIO BT		Example: nIO BT LT
Series	Temp / Humidity	
nIO BT Handheld Programmer	[blank] Standard	
	LT Low Temp	

## WIRING



## INSTALLATION

- Interconnect unit with other nLight devices in lighting zone using CAT-5e cables
- Once power is received via CAT-5e connection, BLE radio will begin broadcasting presence
- Open nLight Handheld Programmer App via Android/iOS smart phone, and follow instructions for pairing