



## nTXVR-250

### WIRELESS TRANSCEIVER / POWER SUPPLY



#### SPECIFICATIONS

##### FEATURES

Wirelessly Communicates using ZigBee  
Supplies Power to Connected Devices  
Provides Two Ports for Control Zones  
Remotely Configurable/Upgradeable  
Push-Button Programmable  
Extended Chase Nipple  
Green LED Indicator

##### PHYSICAL SPECS

SIZE (not including 1/2" chase nipple)  
3.38" H x 2.53" W x 1.83" D  
(8.59 cm x 6.43 cm x 4.65 cm)

WEIGHT 6 oz

MOUNTING 1/2" knockout

COLOR White

##### NETWORK CONNECTIONS

2 RJ-45 ports,  
ZigBee Wireless

##### ELECTRICAL SPECS

OPERATING VOLTAGE: 120/277 VAC

OUTPUT VOLTAGE/CURRENT:

15 VDC, 250mA

WIRES 18 AWG (2)

##### ENVIRONMENTAL SPECS

OPERATING TEMP

14° to 160° F (-10° to 71° C)

STORAGE TEMP

-14° to 160° F (-26° to 71° C)

RELATIVE HUMIDITY

20 to 90% non-condensing

##### OTHER

Designed for ZigBee®  
FCC Certified  
UL and CUL Listed  
Plenum Rated  
Title 24 Compliant  
5 Year Warranty  
Made in the U.S.A.

##### NOTE

THE MANUFACTURER IS NOT RESPONSIBLE FOR ANY RADIO OR TV INTERFERENCE CAUSED BY UNAUTHORIZED MODIFICATIONS TO THIS EQUIPMENT. SUCH MODIFICATIONS COULD VOID THE USER'S AUTHORITY TO OPERATE THE EQUIPMENT.

The nLight nTXVR-250 Series transceiver provides a wireless access point for up to two nLight control zones (or one zone and a Gateway). Functionally it acts like a two port wireless nLight Bridge; enabling zones that are not easily reached with a wired connection to interface into an nLight network. Additionally, the nTXVR-250 provides system power by transforming Class 1 line voltage (120/277 VAC) to Class 2 15 VDC. Both power and communication interfaces via the unit's two RJ-45 connectors, making wiring with standard CAT-5 cabling easy and clean.

For simplifying installation, the nTXVR-250 has an elongated chase nipple that allows them to be attached either directly through a 1/2" inch knockout into a junction box, or inside an adjacent box for meeting specific local code requirements in ceiling plenums.

##### POWERING OPERATION

An nTXVR-250 supplies up to 250mA of power to connected devices. When wired to a Gateway, this amount is enough to adequately meet the 80mA current requirement. Additionally, when wired to a control zone, adequate power for the entire zone is easily provided by this unit, as each device typically requires less than 2mA each.

##### WIRELESS OPERATION

The nTXVR-250 communicates using ZigBee® and transmits at a frequency of 2.4 GHz. It is capable of joining and participating in an nLight wireless mesh network with other nTXVR-250 devices or wireless Bridge devices (nBRG-8-RF). If the unit's local RJ-45 ports are not wired to a Gateway or control zone, the unit will continue to participate in the mesh network as a stand-alone wireless repeater. This feature is useful when attempting to span long hops between other wireless devices. Basic push-button control and LED status indicators make the commissioning process simple.

#### OPTIONS

##### LOW TEMP/HIGH HUMIDITY (-LT)

- Sensor is corrosion resistant to moisture
- Operates down to -40° F/C

#### ORDERING INFO

##### nTXVR-250-[TEMP/HUMIDITY]

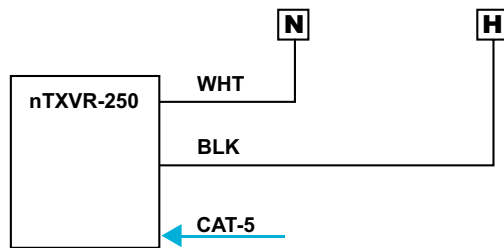
##### TEMP/HUMIDITY

Blank = Standard  
-LT = Low Temp

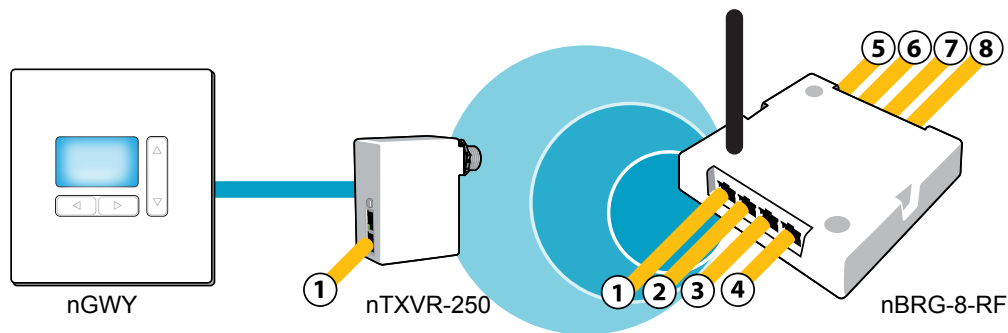
OPTIONS

## WIRING (DO NOT WIRE HOT)

CAT-5 cables can be wired using either T568A or T568B pin/pair assignments

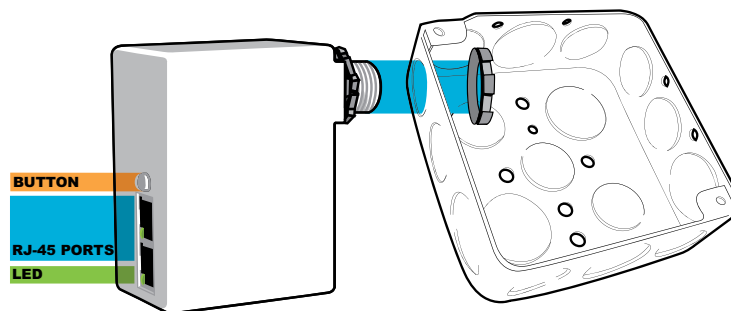


## NETWORK CONFIGURATION



## INSTALLATION

- Mount to any junction box through a ½" knockout (note: chase nipple is long enough to accommodate mounting inside an adjacent box if necessary for local code requirements)
- Connect Class 1 wires to line voltage feed and load
- Interconnect unit (via RJ-45 ports) with other nLight devices in lighting zone using CAT-5 cables
- Once power is received via CAT-5 connection, all devices in zone will automatically begin functioning together according to each device's defaults



## PROGRAMMING

Refer to included instruction card for default settings and directions on programming the sensor via the push-button.

**sensorswitch**

**WARRANTY:** Sensor Switch, Inc. warrants these products to be free of defects in manufacture and workmanship for a period of 60 months. Sensor Switch, Inc., upon prompt notice of such defect, will, at its option, provide a Returned Material Authorization number and repair or replace returned product.

**LIMITATIONS AND EXCLUSIONS:** This Warranty is in full lieu of all other representation and expressed and implied warranties (including the implied warranties of merchantability and fitness for use) and under no circumstances shall Sensor Switch, Inc. be liable for any incidental or consequential property damages or losses.

**TN-604-01**