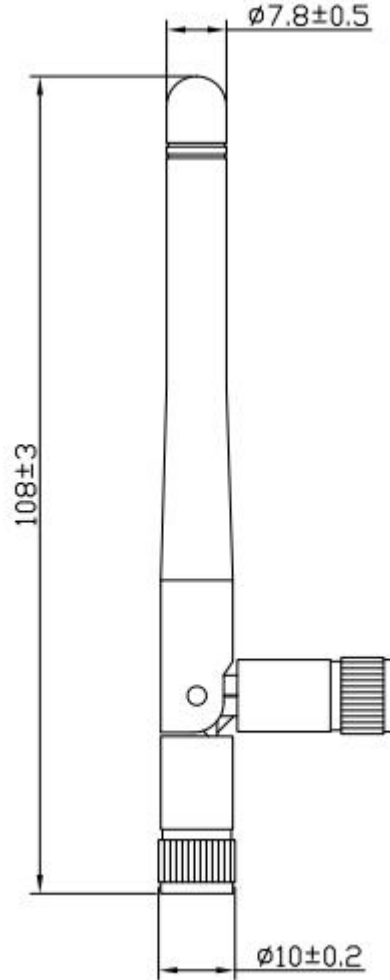


Rubber Antenna

Part Number: AMN_ANT_1010

1.Dimension (Unit: mm)



2.Electrical Characteristics

Form 1

No.	Item	Specifications
1	Frequency (MHz)	5000-7500MHz
2	V.S.W.R(in BW)	<4.5
3	Typical gain	0-2dBi
4	Polarization	linear
5	Impedance	50 Ω
6	Max Power	50W

7	Radiation	All Directional
8	Lightning Protection	DC Grounding

3. Mechanical Characteristics

Form 2

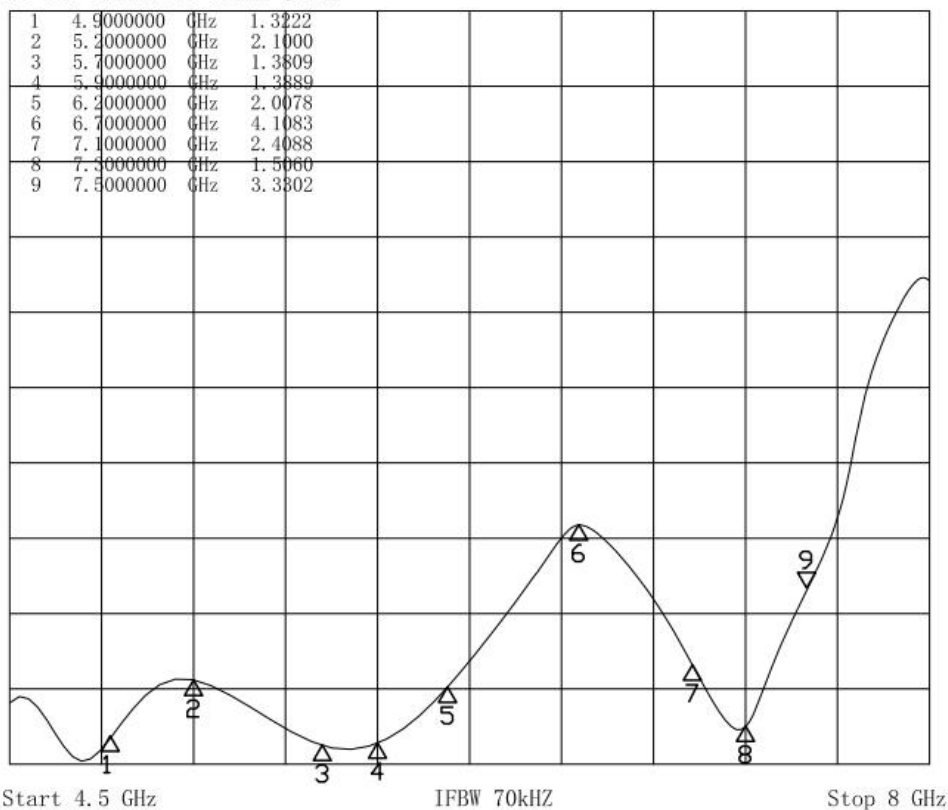
No.	Item	Specification
1	Cable	—
2	Connector	R/P SMA
3	Plastic Housing	Black
4	Height	108±3mm
5	Max diameter	10±0.2mm
6	Min diameter	7.8±0.5mm

4.Environmental Characteristics

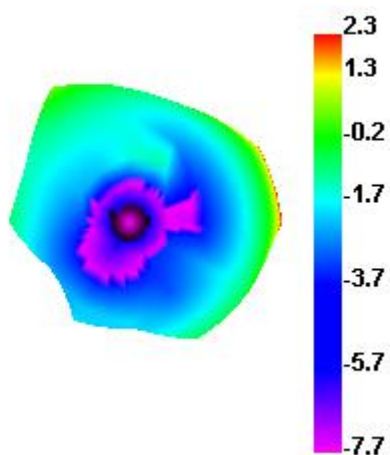
Form 3

No.	Item	Specification
1	Environmental Operating Temperature	- 40°C ~ + 85°C
2	Environmentally Friendly	ROHS Compliant

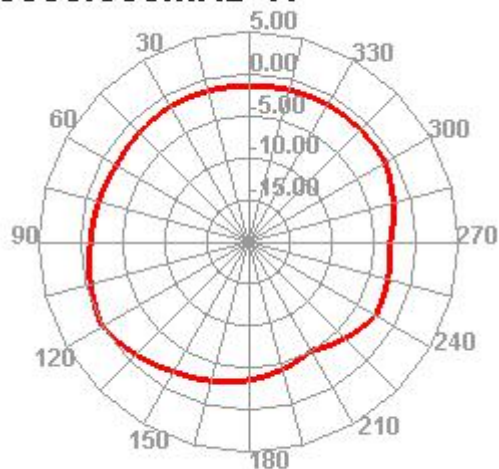
S22 SWR 1.000/Ref 1.000 [D&M]



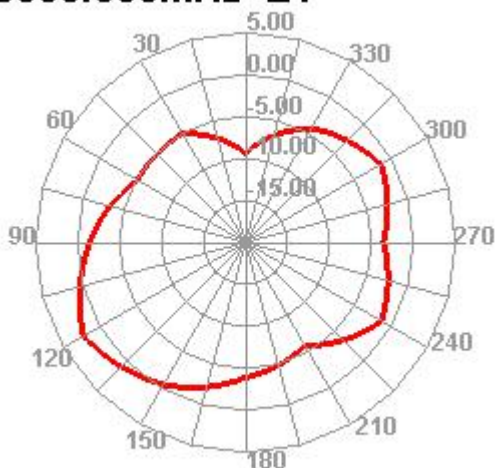
5000.000MHz



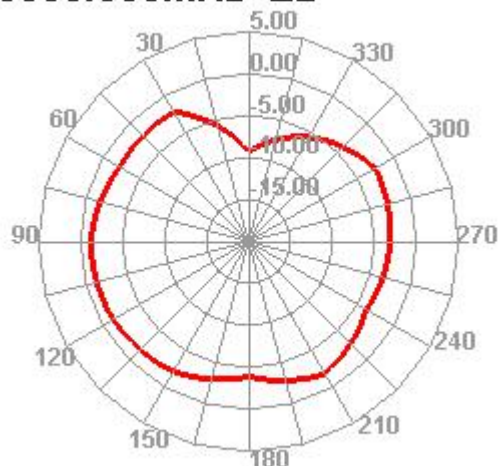
5000.000MHz H



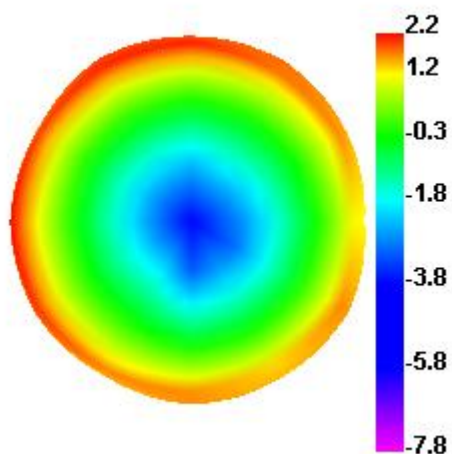
5000.000MHz E1



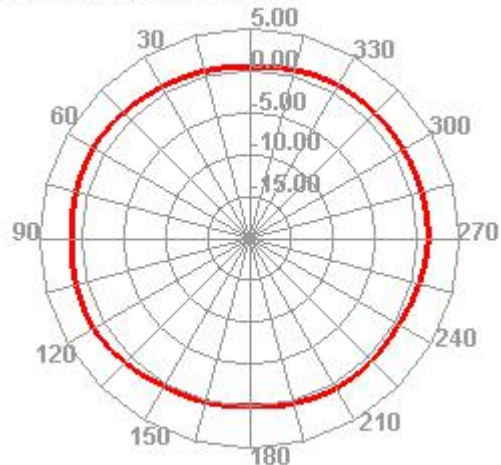
5000.000MHz E2



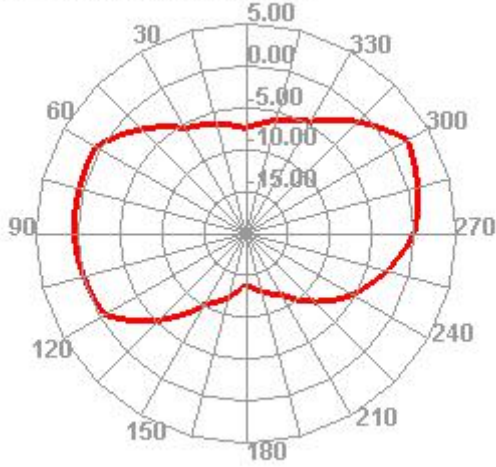
6500.000MHz



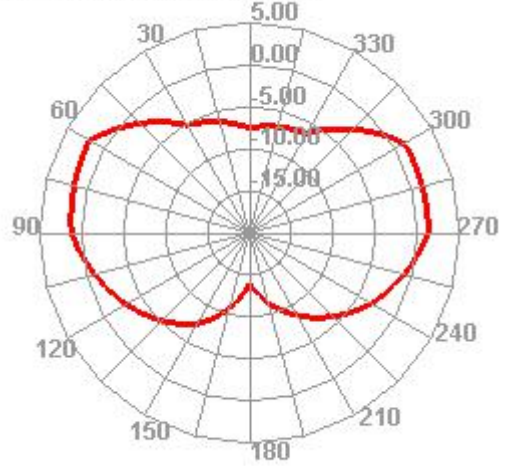
6500.000MHz H



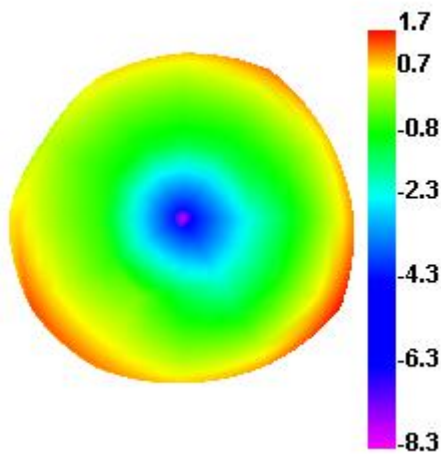
6500.000MHz E1



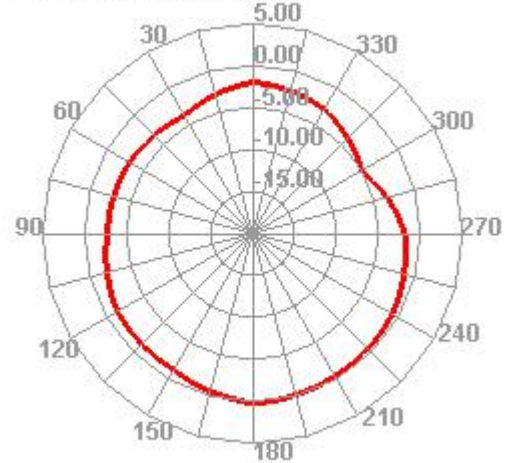
6500.000MHz E2



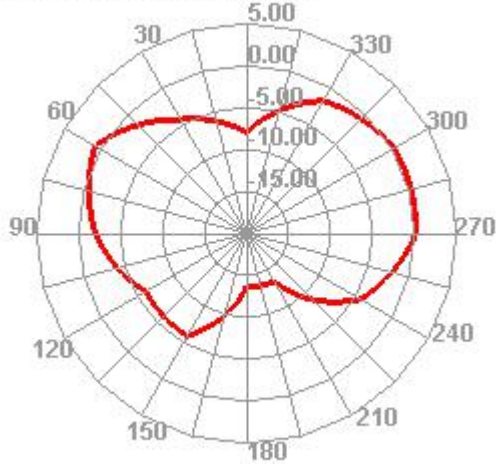
7300.000MHz



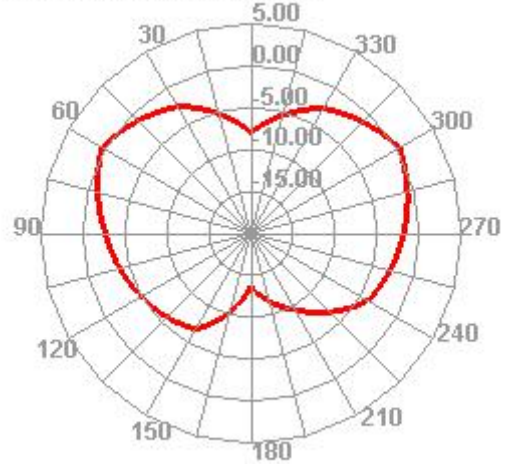
7300.000MHz H



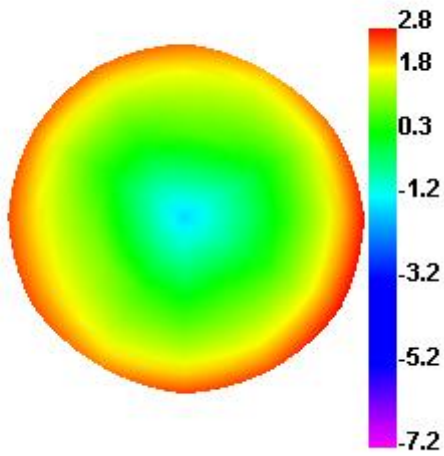
7300.000MHz E1



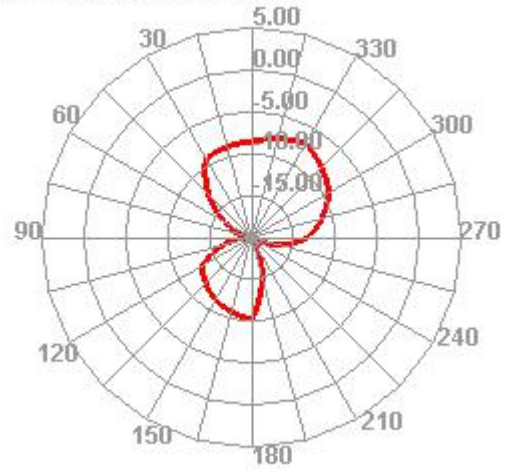
7300.000MHz E2



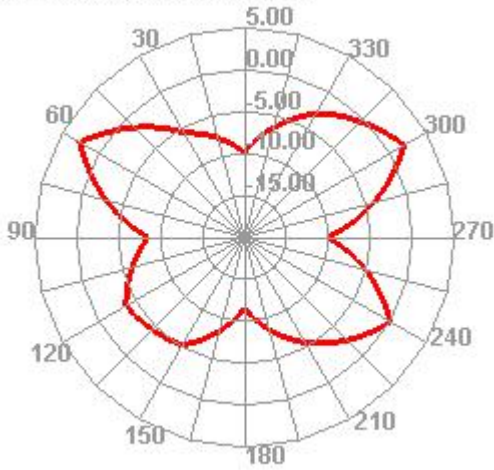
8000.000MHz



8000.000MHz H



8000.000MHz E1



8000.000MHz E2

