



Do

Children using the equipment should be instructed in proper operation by an adult. Do not allow them to use the equipment without adult supervision.
May cause injuries.



Do

Store the equipment out of reach of small children.
May be accidentally swallowed or cause injuries.



Do

Be careful especially when using FOMA terminal connected to the adapter continuously for a long time.
If you use i-αppli, a videophone call or 1Seg watching while charging the battery for a long time, FOMA terminal, battery pack and adapter may be heated.
Directly touching a hot part for a long time, you may have redness, itching or rash on your skin, or it may result in low-temperature burns depending on your constitution and/or health condition.

Handling FOMA terminal



WARNING



Don't

Do not direct the infrared data port toward your eye and transmit signals.
May cause harmful effect on eyes.



Don't

Do not direct the infrared data port toward home electric appliances etc. equipped with infrared device when using infrared communication.
May cause an accident because of malfunction of infrared device.



Don't

Do not turn on the light by getting the lighting part closer to other person's eyes.
May impair eyesight. And may cause accidents like injury etc., by dazzling or astounding other people.



Don't

Do not put foreign objects such as liquid like water, metal pieces or burnable things into UIM or microSD card slot.
May cause fire, burns, injuries, electric shock.



Don't

Do not turn on the light aiming directly at the driver of the car etc.
May disturb driving and cause an accident.



Do

Turn FOMA terminal OFF in areas where use is prohibited, such as in airplanes and hospitals.
Failure to do so may cause electronic equipment or electronic medical equipment to fail or malfunction. If the function which automatically turns the power ON is set, cancel the setting before turning the power OFF.
When using the phone in a medical facility, be sure to observe the regulations of the facility. If you do prohibited act such as using the phone in an airplane, you will be punished according to law.



Do

When you talk by setting handsfree or ring alert is sounding, keep FOMA terminal away from your ear.
And, when connecting the earphone/microphone etc. to the FOMA terminal and play a game or music, adjust the volume moderately.
Too loud volume may cause a hearing loss. And, if you cannot hear the sound around you clearly, it may cause an accident.



Do

If you have weak heart, be careful when setting the Vibrate alert (vibration) or alert volume setting.

May cause harmful effect on heart.



Do

When you use electronic medical equipment, check with the equipment manufacturer to determine how the device is affected by radio waves before using.

May cause harmful effect on electronic medical equipment etc.



Do

Turn FOMA terminal OFF near high-precision electronic control equipment or electronic equipment using low-power signals.

Failure to do so may cause the equipment to fail or malfunction.

* Examples of electronic equipment to avoid.

Hearing aids, implanted pacemakers or defibrillators, other electronic medical equipment, fire alarms, automatic doors and other automatic control equipment.

Users wearing implanted pacemakers or defibrillators or other electronic medical equipment should check with the manufacturer or sales outlet about the effect of radio frequencies on the equipment.



Do

When the display or camera lens is accidentally broken, be careful of broken glass or exposed internal parts of FOMA terminal.

Surfaces of display and camera lens are made of plastic panels and they are structured for the glass not to scatter, however, if you mistakenly touch broken or exposed parts, you may be injured.



Do

To sound the high-pitched alarm, always keep FOMA terminal away from your ears.

Failure to do so may cause hearing defect.

CAUTION



Don't

Do not swing FOMA terminal by antenna or its strap.

May cause accident such as injury to yourself or others by hitting.



Don't

Do not use damaged FOMA terminal.

May cause fire, burns, injuries, electric shock.



Don't

When using the motion tracking or motion sensor, check the safety around you, hold FOMA terminal firmly, and do not shake it unnecessarily.

May cause accident such as injuries.



Don't

If the display part is accidentally broken and the liquid crystal leaks out, do not make the substance contact with your skin of face or hands.

May cause loss of sight or skin problems.

If the liquid crystal gets into your eyes or mouth, rinse it with clean water and see a doctor immediately.

And, if the liquid adheres to skin or clothing, use alcohol etc. to wipe it off, then wash with soap.



Do

To use the terminal in car, check with automobile manufacturer or dealer to determine how the device is affected by radio waves before using.

In rare cases, using the phone in some vehicle models can cause the vehicle's electronic equipment to malfunction. In that case, stop using the terminal immediately.



Do

Mobile phones can give some users skin problems such as itching, allergic reactions or rashes. If you develop skin problems, stop using the phone immediately, and see a doctor.→ "Material list (P14)"



Do

When opening or closing FOMA terminal, take care not to have your fingers or strap caught by the terminal.
May cause accident such as injuries.



Do

When watching the display, take a certain distance from the display in a fully bright place.
May reduce visual acuity.

Handling battery pack

- Check that the battery type matches the type displayed on the battery pack label.

Display	Battery type
Li-ion 00	Li-ion battery



⚠ DANGER



Don't

Do not connect a wire or other metal objects to the jack. And, do not carry or store FOMA terminal with objects like a metal necklace.

May cause the battery pack to ignite, burst, heat or leak.



Don't

Check the orientation of battery pack to install it to FOMA terminal, and do not try to force the battery pack onto FOMA terminal if you are having trouble installing it.

May cause battery pack to ignite, burst, heat or leak.



Don't

Do not throw the battery pack into the fire.

May cause battery pack to ignite, burst, heat or leak.



Don't

Do not nail the battery pack, hit with a hammer or step on it.

May cause battery pack to ignite, burst, heat or leak.



Do

If the battery pack's fluid etc. contacts eyes, immediately flush the eyes with clean water and see a doctor right away. Do not rub the eyes.

May cause loss of sight.



⚠ WARNING



Don't

If the battery pack seems to have abnormalities such as deformation or scratches due to falling, never use it.

May cause battery pack to ignite, burst, heat or leak.



Do

If the battery pack leaks or gives off a strange smell, immediately remove it from the vicinity of open flames.

The vapors from leaking battery pack fluid may ignite or explode.



Do

Be careful not to let your pet bite the battery pack.

May cause battery pack to ignite, burst, heat or leak.



⚠ CAUTION



Don't

Do not discard old battery packs together with other garbage.

May cause igniting or environmental destruction. Tape the terminals of old battery packs to insulate them, and then bring them into a sales outlet such as docomo Shop. If your local municipality has a battery recycling program, dispose of them as provided for.



Don't

Do not use or charge a wet battery pack.
May cause battery pack to ignite, burst, heat or leak.



Do

If fluid etc. leaks out from the battery pack, do not make the fluid contact with your skin of face or hands.

May cause loss of sight or skin problems.
If the fluid etc. put into your eyes or mouth, or contacts skin or clothes, immediately flush the contacted area with clean water.
If the fluid put into the eyes or mouth, immediately see a doctor after flushing.

Handling adapter and desktop holder

WARNING



Don't

Do not use the adapter cord if it gets damaged.

May cause fire, burns, electric shock.



Don't

Do not use the AC adapter or desktop holder in a bathroom or other highly humid area.

May cause fire, burns, electric shock.



Don't

Always use the DC adapter with a negative-ground vehicle. Do not plug it into a positive-ground vehicle.

May cause fire, burns, electric shock.



Don't

When it starts to thunder, do not touch adapter.

May cause electric shock.



Don't

Do not short the charging jack while it is connected to the outlet or cigarette lighter socket. Do not touch the charging jack with a part of your body such as your hand or finger.

May cause fire, burns, electric shock.



Don't

Do not place heavy objects on the adapter cord.

May cause fire, burns, electric shock.



Don't

When you insert and remove AC adapter from power outlet, do not contact a metal strap or other metal objects with the jack.

May cause fire, burns, electric shock.



No wet hands

Do not touch the adapter cord, desktop holder or outlet with wet hands.

May cause fire, burns, electric shock.



Do

Only use with the specified power source and voltage.

When charging FOMA terminal overseas, use AC Adapter for global use.
If incorrect voltage is used, this may cause fire, burns or electric shock.

AC adapter : AC100V
DC adapter : 12 or 24V DC (specific for negative ground vehicle)
AC adapter for global use : Between 100V and 240V AC (Connect to the AC outlet for internal household use)



Do

If the DC adapter's fuse blows, replace it only with the specified fuse.

May cause fire, burns, electric shock. For the specified fuse, see the instructions that come with the DC adapter.



Do

Wipe off any dust that accumulates on the power plug.

Failure to do so may cause fire, burns, electric shock.



When you connect the AC adapter to an outlet, firmly connect to the outlet.

Do

Failure to do so may cause fire, burns, electric shock.



When you disconnect the adapter from the outlet or cigarette lighter socket, do not pull the adapter cord with excessive force. Instead, hold the power plug to disconnect.

Do

May cause fire, burns, electric shock.



Unplug

Always remove the power plug from the outlet or cigarette lighter when not using the adapter for an extended period.

Failure to do so may cause fire, burns, electric shock.



Unplug

Immediately remove the power plug from the outlet or cigarette lighter socket if water or other fluids get into the adapter.

Failure to do so may cause fire, burns, electric shock.



Unplug

Always remove the power plug from the cigarette lighter socket when cleaning the equipment.

Failure to do so may cause fire, burns, electric shock.

Handling UIM

CAUTION



Be careful of the cut surface when removing UIM.

Do

May cause injuries.

Handling mobile phones near electronic medical equipment

These precautions are based on the guidelines produced at the Electromagnetic Compatibility Conference Japan, regarding the protection of electronic medical equipment from radio waves emitted by mobile phone units.

WARNING



Do

Obey the following rules inside medical facilities.

- Do not bring FOMA terminal into operating rooms (ORs), intensive care units (ICUs) or coronary care units (CCUs).
- Turn FOMA terminal OFF in hospital wards.
- Turn FOMA terminal OFF in hospital lobbies and corridors if electronic medical equipment could be nearby.
- If the medical facility has specified zones where use or possession of mobile devices is prohibited, obey those instructions.
- If the function to automatically turn ON the power is set, cancel the setting before turning the power OFF.



Do

Turn FOMA terminal OFF in crowded trains or other public places where pacemaker or defibrillator wearers could be nearby.

FOMA terminal's signals may affect the operation of implanted pacemakers or defibrillators, and other devices.



Do

Wearers of implanted pacemakers or defibrillators must carry and use FOMA terminal at least 22 cm away from the implanted device.

FOMA terminal's signals may affect the operation of implanted pacemakers or defibrillators, and other devices.



Do

When electronic medical equipment other than implanted pacemakers or defibrillators are in use outside of medical facilities (such as in home care settings), check with the device manufacturer to determine how the device is affected by electrical signals.
FOMA terminal's signals may affect the performance of electronic medical equipment.

Material list

Part		Material	Surface treatment
Exterior case	Movable part Display	PC resin	UV hard coating
	Movable part Rear surface	PA-GF resin	UV hard coating
	Fixed part Keypad	PA-GF resin	UV hard coating
	Fixed part Battery	PC+ABS resin	UV hard coating
	Back cover	PC+ABS resin	UV hard coating
	Back cover lock lever	POM resin	None
	Back cover lock plate	Stainless steel	None
	Back cover (body)	Stainless steel	None
	Back cover (gasket)	Silicon rubber	None
Display panel		Hardened glass	Shatterproof film

Part		Material	Surface treatment
Camera lens	Camera panel	High heat resistance transparent material (シルプラス®)	UV hard coating
	Camera ring (Color: BLACK, RED)	ABS resin	Chrome-plating
	Camera ring (Color: WHITE)	Acrylate resin	None
Light lens		PC resin	None
Side keys		PC resin	UV hard coating
Keypad		PC resin	UV hard coating
External connection jack cap	Body	PC resin	UV hard coating
	Flexure	Elastomer resin (TPE)	None
	Water stop	PC resin	None
	Water stop rubber	Silicon rubber	None
Charging jack	Contacts	Stainless steel	Gold plating
	Attaching holder section	LCP resin	None
External connection jack		Stainless steel	Tin plating
Facing sheet around keypad		PET resin	UV hard coating

Part		Material	Surface treatment
Movable part/Rear surface	Facing panel	ABS resin	UV hard coating
	Corner pad	Elastomer resin (TPEE)	None
	Screw sheet	Polyester film	None
Screw (battery install recess)		Stainless steel	None
Battery install recess face		PC board	Gold plating
Battery contacts	Battery contacts connector	PPS resin	None
	Battery contacts	Beryllium copper	Gold plating (base : Ni-Pd plating)
Battery pack	Battery pack	PC resin	None
	Contacts	Beryllium copper	Gold plating
Fingerprint sensor		Flexible PC board	None
UIM tray		POM resin	None

Handling precautions

General

- **F-10C is waterproof/dustproof, however, do not allow water or dust to seep into FOMA terminal and do not allow accessories or optional devices to get wet or let dust attach.**
 - Battery pack, adapter, UIM are not waterproof/dustproof. Do not use in a bathroom or other highly humid area or do not let rain attach. Or putting the terminal on your body, humidity of sweat may cause internal corrosion and malfunction. Note that malfunctions, which are determined to be caused by water as result of inspections, are not covered by the warranty. Since these conditions are outside the scope of the warranty, a repair, if at all possible, is charged.
- **Clean FOMA terminal with a dry soft cloth (such as a cloth for eyeglasses).**
 - Rubbing it roughly with a dry cloth may scratch the display.
 - Drops of water or dirt left on the display may cause stains.
 - If FOMA terminal is wiped with alcohol, paint thinner, benzene or detergent, the printing may disappear or color may fade.
- **Clean the jack occasionally with a dry cotton swab etc.**
 - If the jack is soiled, connection gets worse and it may cause power to be turned off or insufficient battery charge, so clean the jack with a dry cotton swab etc. Also, be careful never to damage the jack when cleaning it.
- **Do not place FOMA terminal near an air-conditioner outlet.**
 - The rapid change in temperature may cause condensation, causing internal corrosion and malfunction.

- **When using, be careful not to subject excessive force to FOMA terminal or the battery.**
 - If FOMA terminal is crammed into a brimming bag or placed in a pocket and sat on, display, internal PCBs or battery pack may be damaged or malfunction. And, if external devices are plugged into the external connection jack (earphone/microphone jack), the breakage of the connector or malfunction may result.
- **Do not rub or scrape the display with a metal piece etc.**
 - It may scratch the display, causing malfunction or damage.
- **Carefully read the separate instructions that come with the battery pack and adapter.**

FOMA terminal

- **Do not press the surface of the touch panel strongly or operate it with sharp objects such as a nail, a ballpoint pen and a pin.**
 - It may damage the touch panel.
- **Avoid extreme temperature.**
 - Use FOMA terminal where the temperature ranges between 5 and 40°C (limited to the temporary use in a bathroom etc. when temperature is above 36°C) and humidity ranges between 45 and 85%.
- **FOMA terminal may affect land-line phones, TVs or radios in use nearby, so use it as far as possible from these appliances.**
- **Maintain a separate record of the data you saved in your FOMA terminal.**
 - If the data is deleted, DOCOMO assumes no responsibility for the loss of any data.
- **Do not drop FOMA terminal or subject it to shocks.**
 - May cause malfunction or damage.
- **Do not plug external devices into the external connection jack (earphone/microphone jack) at a slant, or do not pull it forcibly while it is plugged.**
 - May cause malfunction or damage.

- **Do not close FOMA terminal with the strap etc. held inside.**
 - May cause malfunction or damage.
- **It is normal for FOMA terminal to become warm during use or charging. Continue to use it.**
- **Do not leave FOMA terminal with the camera in areas under strong direct sunlight.**
 - May cause discoloring or burn-in of materials.
- **Use FOMA terminal with the external connection jack cap closed.**
 - Dust and/or water brought into FOMA terminal cause troubles.
- **Do not use FOMA terminal with the back cover removed.**
 - May cause removal of battery pack, malfunction or damage.
- **Do not put extreme thick sticker on the keypad face.**
 - May cause malfunction, damage or erroneous operation.
- **Do not put label or sticker on the back side of display.**
 - Label or sticker may be hooked when opening/closing FOMA terminal and may cause malfunction or damage.
- **Do not rotate the display with FOMA terminal closed.**
 - It may scratch the part around the display and keypad, and it may cause malfunction or damage.
- **Do not put strong impact on the fingerprint sensor or scratch its surface.**
 - It may cause malfunction of fingerprint sensor and disable authentication operation.
- **Clean the fingerprint sensor with a dry soft cloth (such as a cloth for eyeglasses).**
 - If the fingerprint sensor is dirty or water is sit on its surface, the sensor cannot read fingerprints, and it may cause decrease authentication performance or malfunction.
- **While microSD card is being used, do not take the card out and do not turn off FOMA terminal.**
 - May cause data loss or malfunction.

- **Do not bring magnetic cards etc. close to FOMA terminal nor clip it by FOMA terminal.**
 - Magnetic data in cash cards, credit cards, telephone cards, floppy disks, etc. may be erased.
- **Do not bring magnetized objects close to FOMA terminal.**
 - Bringing strong magnetism close may cause a malfunction.

Battery pack

- **The battery pack is a consumable part.**
 - Replace the battery pack if FOMA terminal has extremely short operation time on a full charge, though it may vary by operating conditions. Purchase a new battery pack of the specified type.
 - **Charge the battery in an area within the proper ambient temperature range (5-35°C).**
 - **The operation time provided by the battery pack varies by the operating environment and battery pack's deterioration.**
 - **The battery pack may swell out as it comes to near the end of its lifetime depending on the usage conditions, but it is not a problem.**
 - **Be careful especially about the following points when preserving the battery pack.**
 - Keeping under the state of the full charge (right after charging ends)
 - Keeping under the state of the empty charge (too exhausted to turn on FOMA terminal)
- They may cause the battery pack performance to be degraded or its lifetime to be shortened.
- A recommended battery level to keep the battery pack is the battery icon in 2 cells or in 40 % of remaining battery level as a guide.

Adapter

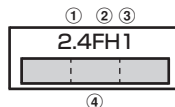
- Charge the battery in an area within the proper ambient temperature range (5-35°C).
- Do not charge the battery in the areas below.
 - In areas of excessive humidity, dust or vibrations
 - Near land-line phones or TVs/radios
- It is normal for the adapter to become hot while charging. Continue to use it.
- When using the DC adapter for charging, keep the vehicle engine running.
 - The vehicle's battery could become flat.
- When using an outlet with a mechanism preventing unplugging, follow the handling instructions for that outlet.
- Do not give strong shock. Do not deform the charging jack.
 - Doing so may cause malfunction.


UIM

- Do not use excessive force to install/remove UIM.
- Note that DOCOMO assumes no responsibility for malfunctions occurring as the result of inserting and using UIM with another IC card reader/writer.
- Always keep UIM ICs clean.
- Clean UIM with a soft, dry cloth (such as a cloth for eyeglasses).
- Maintain a separate record of the data you saved in UIM.
 - If the data is deleted, DOCOMO assumes no responsibility for the loss of any data.
- To preserve the environment, bring the old UIM to a sales outlet such as docomo Shop.
- Take care not to scratch, touch accidentally or short IC.
 - May cause data loss or malfunction.
- Do not drop UIM or subject it to shocks.
 - May cause malfunction.
- Do not bend UIM or place heavy objects on it.
 - May cause malfunction.
- Do not install UIM into FOMA terminal with a label or sticker put on.
 - May cause malfunction.

Bluetooth® devices

- This FOMA terminal is equipped with the security features, that are compliant with Bluetooth standards for communication via Bluetooth. However, depending on the settings, there may not be enough security. Be aware of security risks when using Bluetooth.
- DOCOMO assumes no responsibility for any information which may be leaked during communication via Bluetooth.
- You can use headset, handsfree, audio, keyboard, dial-up connection, data transfer, serial port, image transfer or health devices with FOMA terminal. An audio/video remote control may be available with an audio device (only Bluetooth compatible devices).
- Frequency bands
 - Frequency bands used by FOMA terminal Bluetooth function are as below.



- ① 2.4 : Radio equipment that uses the 2400 MHz band.
- ② FH : The modulation is the FH-SS method.
- ③ 1 : The expected interference distance is 10 m or shorter.
- ④  : All bandwidths between 2400 MHz and 2483.5 MHz are used, and the bandwidth used by mobile object identification devices cannot be avoided.

Cautions on using Bluetooth devices

In the bandwidth used by this terminal, in addition to home electric appliances such as a microwave oven and industrial/scientific/medical devices, in-plant radio stations used to identify mobile objects used in production lines of a factory that require a license, specified low power radio stations, or amateur radio stations that do not require a license (hereafter "other radio stations") can be in operation.

1. Before using this terminal, check whether other radio stations are in operation in your neighborhood.
2. If radio wave interference occurs between the terminal and "other radio stations", use the terminal in a different location or "Turn the power OFF" to avoid the radio wave interference.
3. For details, contact "General Inquiries" on the last page of this manual.

FeliCa reader/writer

- FeliCa reader/writer function of FOMA terminal uses weak waves requiring no licenses for radio stations.
- It uses 13.56 MHz frequency band. When using other reader/writers in your surroundings, keep FOMA terminal away sufficiently from them. Before using the FeliCa reader/writer, confirm that there are no radio stations using the same frequency band nearby.

FM transmitter

- FM transmitter of FOMA terminal uses weak waves requiring no licenses for radio stations.
- It uses 77.4 - 85.0MHz frequency band. To use it, set frequency not to common to FM radio station of the area you use to avoid affecting FM radio users in neighborhood.

CAUTION

- **Do not use a remodeled FOMA terminal. Using a remodeled terminal violates the Radio Law.**
FOMA terminal is certified according to technical standard conformance of specified wireless equipment based on the Radio Law, and as a proof of it, the "Technical Compliance Mark (TCM)" is depicted on the engraved sticker of FOMA terminal.
If you remodel FOMA terminal by removing its screws, your certification of technical standard conformance becomes invalid.
Do not use FOMA terminal with its certification of technical standard conformance invalid as it violates the Radio Law.
- **Be careful when you use FOMA terminal while driving a car etc.**
Using a mobile phone while driving is subject to penal regulations.
However, absolutely necessary cases such as rescue of a sick person or maintaining public's safety are exempted.
- **Use the Bluetooth function only in Japan.**
The Bluetooth function of the FOMA terminal is compliant with wireless standards and is authorized for use only in Japan.
If you use this function overseas, you may be punished.
- **Use FeliCa reader/writer function only in Japan.**
FeliCa reader/writer function of FOMA terminal conforms to Japanese radio standards.
If you use this function overseas, you may be punished.
- **Use FM transmitter only in Japan.**
FM transmitter of FOMA terminal is compliant with wireless standards and is authorized for use only in Japan.
If you use this function overseas, you may be punished.

Waterproof/Dustproof function

F-10C provides waterproofness of IPX5*¹, IPX8*² and dustproofness of IP5X*³ with firmly closing the external connection jack cap and installing the back cover in a locked state.

- *1 IPX5 means that a phone keeps functioning after applying a jet flow of 12.5 L/min. from every direction from a distance of approximately 3 m for at least 3 minutes using water nozzle in 6.3 mm inner diameter.
- *2 For F-10C, IPX8 means that a phone keeps functioning after F-10C is slowly submerged to depth of 1.5m in static tap water at room temperature, left there for 30 minutes and then taken out, and the mobile phone keeps shooting still images or moving pictures in approximately 30 minutes in static tap water at room temperature.
- *3 IP5X means a protection degree that a phone keeps functioning and safety after it is placed in a device with dust in diameter 75 μ or less for 8 hours, agitated and then taken out.

❖ What you can do with waterproofness/dustproofness of F-10C

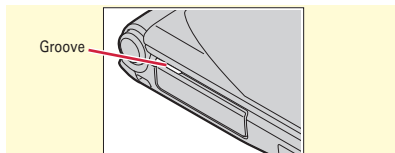
- **You can talk or watch 1Seg programs without using an umbrella in the rain (for rainfall of 20 mm or less per hour).**
 - When your hands or the FOMA terminal are wet, avoid installing/removing the back cover or opening/closing the external connection jack cap.

- **You can also shoot still images and moving pictures in the pool depth of 1.5 m.**
 - Do not perform other operations underwater than shooting still images and moving pictures.
 - If you put the terminal in water of swimming pool, be sure to have it within 30 minutes.
 - If FOMA terminal gets wet with water from the swimming pool, wash it in specified procedure (\Rightarrow P23).
- **You can use FOMA terminal in a bathroom.**
 - Do not put the terminal in the bathtub. Do not use the terminal in hot water. May cause malfunction.
 - Never put FOMA terminal in hot spring water or water containing soap, detergent or bath powder.

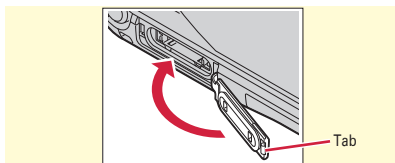
To ensure waterproofness/dustproofness

To avoid water/dust ingress, be sure to observe the following points.

- Do not throw any liquid other than room-temperature tap water on FOMA terminal, or soak it in such liquid.
- When using the external connection jack, pull the cap up with your finger by the groove as shown in the illustration.



After using the external connection jack, close the cap as the direction shown in the, and make sure that the cap is completely closed without slack by pushing the tab in.



- For installing the back cover, see "Installing back cover" of "Attaching UIM/battery pack". ⇒P26
- Securely lock the back cover and firmly close the external connection jack cap. Even a fine obstacle (one hair, one grain of sand, tiny fiber, etc.) put between contact surfaces may allow water to enter.
- Do not poke the microphone, earpiece or speaker with a swab or sharp object.
- Do not let FOMA terminal fall. It may become scratched causing the waterproof/dustproof performance to degrade.
- The external connection jack cap and the rubber packing of the rear side of the back cover play an important role for keeping waterproof performance. Do not deform the back cover by twisting etc. or peel off or damage the rubber packing. Also, prevent dust from adhering to it.

● ● ●
To keep FOMA terminal waterproofness/dustproofness, replacement of parts is required every 2 years regardless of whether FOMA terminal appears normal or abnormal. DOCOMO replaces the parts as a chargeable service. Bring FOMA terminal to a sales outlet such as a DOCOMO-specified repair office.

Important precautions

Do not perform actions shown in the illustrations below.

<Example>



Using Soap/Detergent/
Bath powder



Washing with
brush/sponge



Machine-washing



Applying strong
water flow



Soaking in
ocean water



Using in
hot spring

Observe the following precautions to use FOMA terminal properly.

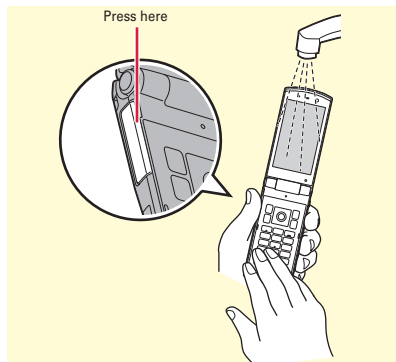
- Accessories and optional devices are not waterproof/dustproof. When watching 1Seg etc. with FOMA terminal installed in the included desktop holder, do not use it in a bathroom, shower room, kitchen or lavatory even if it is not connected to the AC adapter.
- Do not apply water flow stronger than allowed (⇒P21) (e.g., such water flow that gives you pain when applied to your skin directly from a faucet or shower). F-10C provides IPX5 waterproof performances. However, it causes malfunction.
- If FOMA terminal gets wet with salt water, sea water, refreshing beverage or mud or soil adhered, wash it immediately. If they dry out, it is hard to remove the dirt and it may cause damage or malfunction.
- Do not put FOMA terminal in hot water, use it in a sauna or apply hot airflow (from a hair dryer etc.) to it.

- Do not move in water or slam the terminal against the surface of water with FOMA terminal opened.
- If you put the terminal in tap water or in water of swimming pool, be sure to have it within 30 minutes.
- When you use the terminal in swimming pool, obey rules of the facility.
- FOMA terminal does not float on water.
- Do not leave water on FOMA terminal. May short-circuit the power jacks, or in a cold region, water may freeze causing malfunction.
- Do not leave water on the microphone, earpiece or speaker. Such water may interfere with talking.
- Do not leave water on the temperature/humidity sensor. Measuring temperature and humidity may not be correct.
- If the back cover is damaged, replace it. Water may enter inside from a damaged section causing troubles such as electric shocks or corrosion of the battery.
- If FOMA terminal gets wet with water or other liquids with the external connection jack cap or the back cover open, the liquid may get inside the terminal causing electric shocks or malfunction. Stop using FOMA terminal, turn the power OFF, remove the battery pack and contact a DOCOMO-specified repair office.
- If the external connection jack cap, or the rubber gasket on the rear side of the back cover is damaged or deformed, replace it at DOCOMO-specified repair office.

● ● ●
 DOCOMO does not guarantee actual operations under all states. Malfunctions deemed to be caused by inappropriate operation by the customer are not covered by the warranty.

Washing FOMA terminal

With pressing and holding the external connection jack cap not to open, wash the terminal in tap water without rubbing hard.

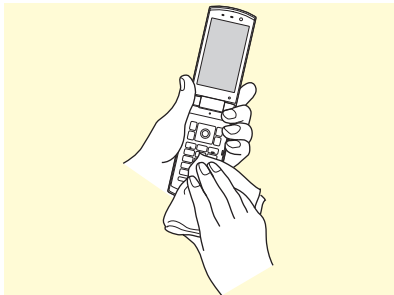


- Do not apply water flow stronger than allowed (⇒P21) (e.g., such water flow that gives you pain when applied to your skin directly from a faucet or shower).
- In locked state with the back cover attached, with pressing and holding the external connection jack cap not to open, wash the terminal in tap water in room temperature without rubbing hard.
- Do not use brush, sponge, soap, detergent, etc.
- If mud or soil is adhered to the terminal, do not open, close or rotate the terminal. Eliminate the dirt first by shaking several times in tap water of wash-basin and then wash the terminal with running water.
- After washing, wipe the surface with dry cloth well, drain water by the following procedure and let the terminal dry naturally.

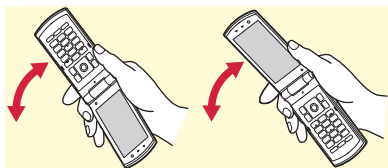
Draining water from FOMA terminal

When FOMA terminal is wet, water may flow out after wiping it off; drain the water in the following steps.

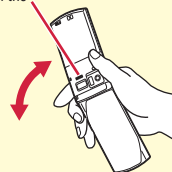
- ① Hold the hinge section of FOMA terminal firmly and wipe off moisture on FOMA terminal surface and back side with dry, clean cloth etc.



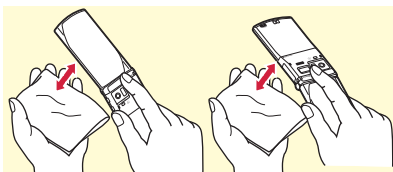
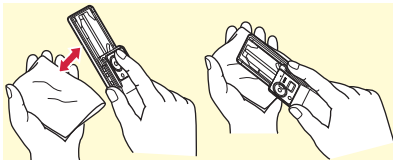
- ② Shake FOMA terminal approximately 20 times, firmly holding its hinge section, until there is no more water splattering.



To drain water off the speaker, shake FOMA terminal with the speaker upward



- ③ Swing FOMA terminal in about 10 times against dry, clean cloth etc. to wipe off water remaining in the microphone, earpiece, speaker, keypad, hinges or charging jack, etc. In addition, swing the right side of the display face against cloth about 10 times to wipe off the water remaining in earpiece (right in the illustration below).



- ④ Wipe off water drained from FOMA terminal with dry, clean cloth etc., and dry naturally.
- Water, if any, remaining in FOMA terminal may ooze up after wiping off.
 - Do not wipe off water remaining in gaps directly with a cotton swab etc.

Charging

Check the following before and after charging.

- Check if FOMA terminal is not wet. Never try to charge the battery pack when FOMA terminal is wet.
- Accessories and optional devices are not waterproof/dustproof.
- When charging the battery when or after FOMA terminal is wet, adequately drain it and wipe off water with a dry, clean cloth etc., before connecting the accessory desktop holder or opening the external connection jack cap.
- When the external connection jack cap is opened for charging, close the cap firmly after charging. It is recommended to use the desktop holder for charging to prevent water from seeping inside from the external connection jack.
- Do not use the AC adapter or desktop holder in a bathroom, shower room, kitchen, lavatory or other highly humid area. May cause fire or electric shock.
- Do not touch the AC adapter or desktop holder with wet hands. May cause electric shock.