

FCC SAR Test Report

Report No. : SA170713C02
Applicant : FUJITSU CONNECTED TECHNOLOGIES Ltd.
Address : 1-1, Kamikodanaka 4-chome, Nakahara-ku, Kawasaki 211-8588, Japan
Product : Tablet PC
FCC ID : VQK-F02K
Brand : FUJITSU
Model No. : F-02K
Standards : FCC 47 CFR Part 2 (2.1093), IEEE C95.1:1992, IEEE Std 1528:2013
 KDB 865664 D01 v01r04, KDB 865664 D02 v01r02
 KDB 248227 D01 v02r02, KDB 447498 D01 v06, KDB 616217 D04 v01r02
 KDB 941225 D01 v03r01, KDB 941225 D05 v02r05
Sample Received Date : Jul. 13, 2017
Date of Testing : Aug. 31, 2017 ~ Sep. 05, 2017
Lab Address : No. 47-2, 14th Ling, Chia Pau Vil., Lin Kou Dist., New Taipei City, Taiwan, R.O.C.
Test Location : No. 19, Hwa Ya 2nd Rd, Wen Hwa Vil, Kwei Shan Dist., Taoyuan City 33383, Taiwan (R.O.C)

CERTIFICATION: The above equipment have been tested by **Bureau Veritas Consumer Products Services (H.K.) Ltd., Taoyuan Branch – Lin Kou Laboratories**, and found compliance with the requirement of the above standards. The test record, data evaluation & Equipment Under Test (EUT) configurations represented herein are true and accurate accounts of the measurements of the sample’s SAR characteristics under the conditions specified in this report. It should not be reproduced except in full, without the written approval of our laboratory. The client should not use it to claim product certification, approval, or endorsement by TAF or any government agencies.

Prepared By : *Evonne Liu*
 Evonne Liu / Specialist

Approved By : *Gordon Lin*
 Gordon Lin / Assistant Manager



FCC Accredited No.: TW0003

This report is for your exclusive use. Any copying or replication of this report to or for any other person or entity, or use of our name or trademark, is permitted only with our prior written permission. This report sets forth our findings solely with respect to the test samples identified herein. The results set forth in this report are not indicative or representative of the quality or characteristics of the lot from which a test sample was taken or any similar or identical product unless specifically and expressly noted. Our report includes all of the tests requested by you and the results thereof based upon the information that you provided to us. You have 60 days from date of issuance of this report to notify us of any material error or omission caused by our negligence, provided, however, that such notice shall be in writing and shall specifically address the issue you wish to raise. A failure to raise such issue within the prescribed time shall constitute your unqualified acceptance of the completeness of this report, the tests conducted and the correctness of the report contents. Unless specific mention, the uncertainty of measurement has been explicitly taken into account to declare the compliance or non-compliance to the specification.

Table of Contents

| | |
|---|-----------|
| Release Control Record | 3 |
| 1. Summary of Maximum SAR Value | 4 |
| 2. Description of Equipment Under Test | 5 |
| 3. SAR Measurement System | 6 |
| 3.1 Definition of Specific Absorption Rate (SAR) | 6 |
| 3.2 SPEAG DASY52 System | 6 |
| 3.2.1 Robot..... | 7 |
| 3.2.2 Probes..... | 8 |
| 3.2.3 Data Acquisition Electronics (DAE) | 8 |
| 3.2.4 Phantoms | 9 |
| 3.2.5 Device Holder..... | 10 |
| 3.2.6 System Validation Dipoles..... | 10 |
| 3.2.7 Tissue Simulating Liquids..... | 11 |
| 3.3 SAR System Verification | 14 |
| 3.4 SAR Measurement Procedure | 15 |
| 3.4.1 Area & Zoom Scan Procedure | 15 |
| 3.4.2 Volume Scan Procedure..... | 15 |
| 3.4.3 Power Drift Monitoring..... | 16 |
| 3.4.4 Spatial Peak SAR Evaluation | 16 |
| 3.4.5 SAR Averaged Methods | 16 |
| 4. SAR Measurement Evaluation | 17 |
| 4.1 EUT Configuration and Setting..... | 17 |
| 4.2 EUT Testing Position | 23 |
| 4.2.1 Body Exposure Conditions | 23 |
| 4.2.2 SAR Test Exclusion Evaluations | 24 |
| 4.3 Tissue Verification | 25 |
| 4.4 System Validation..... | 26 |
| 4.5 System Verification..... | 26 |
| 4.6 Maximum Output Power..... | 27 |
| 4.6.1 Maximum Target Conducted Power | 27 |
| 4.6.2 Measured Conducted Power Result..... | 28 |
| 4.7 SAR Testing Results | 32 |
| 4.7.1 SAR Test Reduction Considerations | 32 |
| 4.7.2 SAR Results for Body Exposure Condition | 34 |
| 4.7.3 SAR Measurement Variability..... | 35 |
| 4.7.4 Simultaneous Multi-band Transmission Evaluation | 36 |
| 5. Calibration of Test Equipment..... | 43 |
| 6. Measurement Uncertainty..... | 44 |
| 7. Information on the Testing Laboratories..... | 46 |
| | |
| Appendix A. SAR Plots of System Verification | |
| Appendix B. SAR Plots of SAR Measurement | |
| Appendix C. Calibration Certificate for Probe and Dipole | |
| Appendix D. Photographs of EUT and Setup | |



Release Control Record

| Report No. | Reason for Change | Date Issued |
|-------------|-------------------|---------------|
| SA170713C02 | Initial release | Sep. 15, 2017 |
| | | |
| | | |
| | | |
| | | |
| | | |
| | | |
| | | |
| | | |
| | | |
| | | |
| | | |
| | | |
| | | |
| | | |
| | | |
| | | |
| | | |
| | | |
| | | |
| | | |
| | | |

1. Summary of Maximum SAR Value

| Equipment Class | Mode | Highest SAR-1g Body (W/kg) |
|---------------------------------------|-----------|----------------------------|
| PCB | WCDMA V | 0.87 |
| | LTE 5 | 0.84 |
| DTS | 2.4G WLAN | 0.30 |
| NII | 5.3G WLAN | 0.84 |
| | 5.6G WLAN | 0.79 |
| DSS | Bluetooth | 0.33 |
| DXX | ANT+ | N/A |
| DXX | NFC | N/A |
| Highest Simultaneous Transmission SAR | | Body |
| | | 1.20 |

Note:

1. The SAR criteria (**Head & Body: SAR-1g 1.6 W/kg, and Extremity: SAR-10g 4.0 W/kg**) for general population / uncontrolled exposure is specified in FCC 47 CFR part 2 (2.1093) and ANSI/IEEE C95.1-1992.

2. Description of Equipment Under Test

| | |
|--|---|
| EUT Type | Tablet PC |
| FCC ID | VQK-F02K |
| Brand Name | FUJITSU |
| Model Name | F-02K |
| Tx Frequency Bands (Unit: MHz) | WCDMA Band V : 826.4 ~ 846.6 LTE Band 5 : 824.7 ~ 848.3 (BW: 1.4M, 3M, 5M, 10M) WLAN : 2412 ~ 2462, 5180 ~ 5240, 5260 ~ 5320, 5500 ~ 5700 Bluetooth : 2402 ~ 2480 ANT+ : 2402 ~ 2480 NFC : 13.56 |
| Uplink Modulations | WCDMA : QPSK LTE : QPSK, 16QAM 802.11b : DSSS 802.11a/g/n/ac : OFDM Bluetooth : GFSK, $\pi/4$ -DQPSK, 8-DPSK ANT+ : GFSK NFC : ASK |
| Maximum Tune-up Conducted Power (Unit: dBm) | Please refer to section 4.6.1 of this report |
| Antenna Type | λ /4 Monopole Antenna |
| EUT Stage | Identical Prototype |

Note:

1. The above EUT information is declared by manufacturer and for more detailed features description please refers to the manufacturer's specifications or User's Manual.

List of Accessory:

| | | |
|----------------|---------------------|-------------------------------------|
| Battery | Brand Name | FUJITSU CONNECTED TECHNOLOGIES Ltd. |
| | Model Name | CA54310-0068 |
| | Power Rating | 3.8Vdc, 6000mAh |
| | Type | Li-ion |

3. SAR Measurement System

3.1 Definition of Specific Absorption Rate (SAR)

SAR is related to the rate at which energy is absorbed per unit mass in an object exposed to a radio field. The SAR distribution in a biological body is complicated and is usually carried out by experimental techniques or numerical modeling. The standard recommends limits for two tiers of groups, occupational/controlled and general population/uncontrolled, based on a person's awareness and ability to exercise control over his or her exposure. In general, occupational/controlled exposure limits are higher than the limits for general population/uncontrolled.

The SAR definition is the time derivative (rate) of the incremental energy (dW) absorbed by (dissipated in) an incremental mass (dm) contained in a volume element (dv) of a given density (ρ). The equation description is as below:

$$\text{SAR} = \frac{d}{dt} \left(\frac{dW}{dm} \right) = \frac{d}{dt} \left(\frac{dW}{\rho dv} \right)$$

SAR is expressed in units of Watts per kilogram (W/kg)

SAR measurement can be related to the electrical field in the tissue by

$$\text{SAR} = \frac{\sigma |E|^2}{\rho}$$

Where: σ is the conductivity of the tissue, ρ is the mass density of the tissue and E is the RMS electrical field strength.

3.2 SPEAG DASY52 System

DASY52 system consists of high precision robot, probe alignment sensor, phantom, robot controller, controlled measurement server and near-field probe. The robot includes six axes that can move to the precision position of the DASY52 software defined. The DASY52 software can define the area that is detected by the probe. The robot is connected to controlled box. Controlled measurement server is connected to the controlled robot box. The DAE includes amplifier, signal multiplexing, AD converter, offset measurement and surface detection. It is connected to the Electro-optical coupler (ECO). The ECO performs the conversion from the optical into digital electric signal of the DAE and transfers data to the PC.

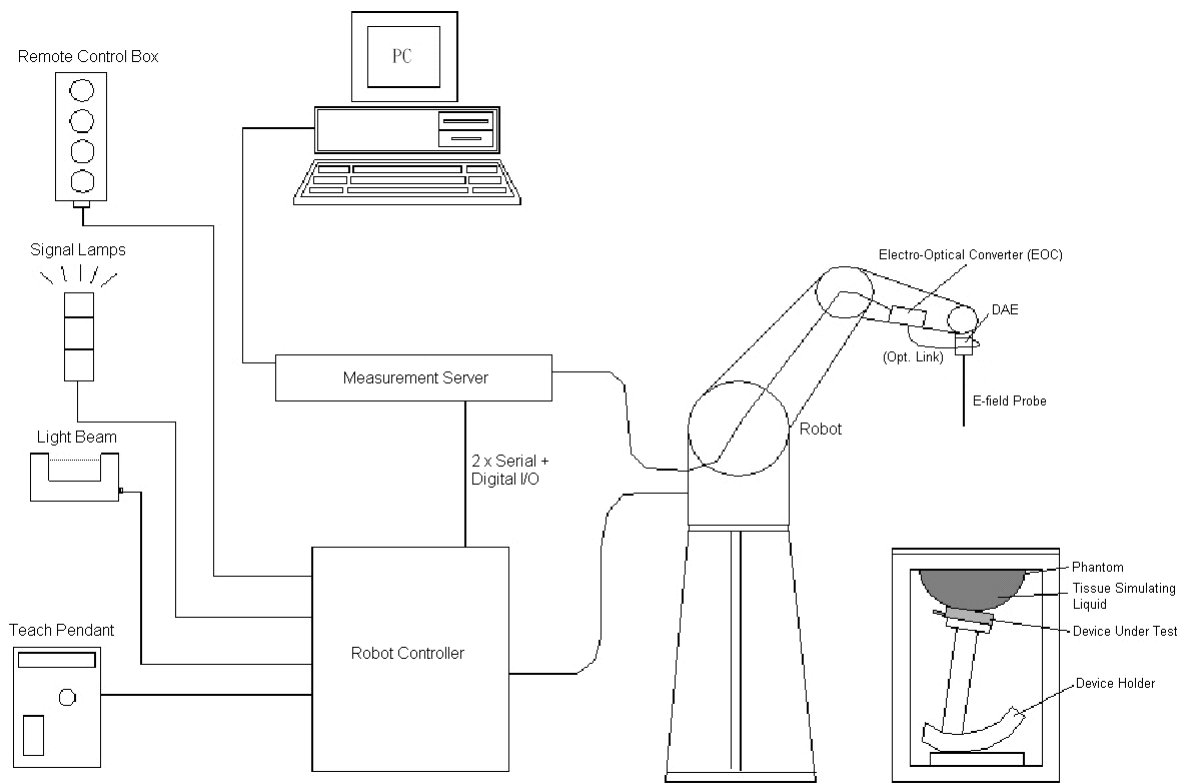


Fig-3.1 SPEAG DASY52 System Setup

3.2.1 Robot

The DASY52 systems use the high precision robots from Stäubli SA (France). For the 6-axis controller system, the robot controller version of CS8c from Stäubli is used. The Stäubli robot series have many features that are important for our application:

- High precision (repeatability ± 0.035 mm)
- High reliability (industrial design)
- Jerk-free straight movements
- Low ELF interference (the closed metallic construction shields against motor control fields)





Fig-3.2 SPEAG DASY52 System


FCC SAR Test Report

3.2.2 Probes


The SAR measurement is conducted with the dosimetric probe. The probe is specially designed and calibrated for use in liquid with high permittivity. The dosimetric probe has special calibration in liquid at different frequency.

| | | |
|----------------------|--|---|
| Model | EX3DV4 |  |
| Construction | Symmetrical design with triangular core. Built-in shielding against static charges. PEEK enclosure material (resistant to organic solvents, e.g., DGBE). | |
| Frequency | 10 MHz to 6 GHz Linearity: ± 0.2 dB | |
| Directivity | ± 0.3 dB in HSL (rotation around probe axis) ± 0.5 dB in tissue material (rotation normal to probe axis) | |
| Dynamic Range | 10 μ W/g to 100 mW/g Linearity: ± 0.2 dB (noise: typically < 1 μ W/g) | |
| Dimensions | Overall length: 337 mm (Tip: 20 mm) Tip diameter: 2.5 mm (Body: 12 mm) Typical distance from probe tip to dipole centers: 1 mm | |

| | | |
|----------------------|---|--|
| Model | ES3DV3 |  |
| Construction | Symmetrical design with triangular core. Interleaved sensors. Built-in shielding against static charges. PEEK enclosure material (resistant to organic solvents, e.g., DGBE). | |
| Frequency | 10 MHz to 4 GHz Linearity: ± 0.2 dB | |
| Directivity | ± 0.2 dB in HSL (rotation around probe axis) ± 0.3 dB in tissue material (rotation normal to probe axis) | |
| Dynamic Range | 5 μ W/g to 100 mW/g Linearity: ± 0.2 dB | |
| Dimensions | Overall length: 337 mm (Tip: 20 mm) Tip diameter: 3.9 mm (Body: 12 mm) Distance from probe tip to dipole centers: 2.0 mm | |


| | | |
|----------------------|--|---|
| Model | ET3DV6 |  |
| Construction | Symmetrical design with triangular core Built-in optical fiber for surface detection system. Built-in shielding against static charges. PEEK enclosure material (resistant to organic solvents, e.g., DGBE) | |
| Frequency | 10 MHz to 2.3 GHz; Linearity: ± 0.2 dB | |
| Directivity | ± 0.2 dB in TSL (rotation around probe axis) ± 0.4 dB in TSL (rotation normal to probe axis) | |
| Dynamic Range | 5 μ W/g to 100 mW/g; Linearity: ± 0.2 dB | |
| Dimensions | Overall length: 337 mm (Tip: 16 mm) Tip diameter: 6.8 mm (Body: 12 mm) Distance from probe tip to dipole centers: 2.7 mm | |

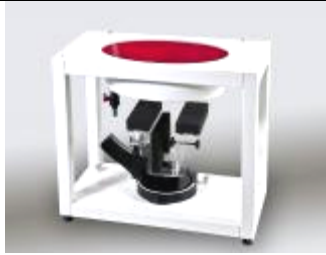
3.2.3 Data Acquisition Electronics (DAE)

| | | |
|-----------------------------|---|---|
| Model | DAE3, DAE4 |  |
| Construction | Signal amplifier, multiplexer, A/D converter and control logic. Serial optical link for communication with DASY embedded system (fully remote controlled). Two step probe touch detector for mechanical surface detection and emergency robot stop. | |
| Measurement Range | -100 to +300 mV (16 bit resolution and two range settings: 4mV, 400mV) | |
| Input Offset Voltage | $< 5\mu$ V (with auto zero) | |
| Input Bias Current | < 50 fA | |
| Dimensions | 60 x 60 x 68 mm | |

FCC SAR Test Report


3.2.4 Phantoms


| | | |
|------------------------|---|---|
| Model | Twin SAM |  |
| Construction | The shell corresponds to the specifications of the Specific Anthropomorphic Mannequin (SAM) phantom defined in IEEE 1528 and IEC 62209-1. It enables the dosimetric evaluation of left and right hand phone usage as well as body mounted usage at the flat phantom region. A cover prevents evaporation of the liquid. Reference markings on the phantom allow the complete setup of all predefined phantom positions and measurement grids by teaching three points with the robot. | |
| Material | Vinylester, glass fiber reinforced (VE-GF) | |
| Shell Thickness | 2 ± 0.2 mm (6 ± 0.2 mm at ear point) | |
| Dimensions | Length: 1000 mm Width: 500 mm Height: adjustable feet | |
| Filling Volume | approx. 25 liters | |

| | | |
|------------------------|---|--|
| Model | ELI |  |
| Construction | Phantom for compliance testing of handheld and body-mounted wireless devices in the frequency range of 30 MHz to 6 GHz. ELI is fully compatible with the IEC 62209-2 standard and all known tissue simulating liquids. ELI has been optimized regarding its performance and can be integrated into our standard phantom tables. A cover prevents evaporation of the liquid. Reference markings on the phantom allow installation of the complete setup, including all predefined phantom positions and measurement grids, by teaching three points. The phantom is compatible with all SPEAG dosimetric probes and dipoles. | |
| Material | Vinylester, glass fiber reinforced (VE-GF) | |
| Shell Thickness | 2.0 ± 0.2 mm (bottom plate) | |
| Dimensions | Major axis: 600 mm Minor axis: 400 mm | |
| Filling Volume | approx. 30 liters | |


FCC SAR Test Report

3.2.5 Device Holder

| | | |
|---------------------|---|---|
| Model | Mounting Device |  |
| Construction | In combination with the Twin SAM Phantom or ELI4, the Mounting Device enables the rotation of the mounted transmitter device in spherical coordinates. Rotation point is the ear opening point. Transmitter devices can be easily and accurately positioned according to IEC, IEEE, FCC or other specifications. The device holder can be locked for positioning at different phantom sections (left head, right head, flat). | |
| Material | POM | |

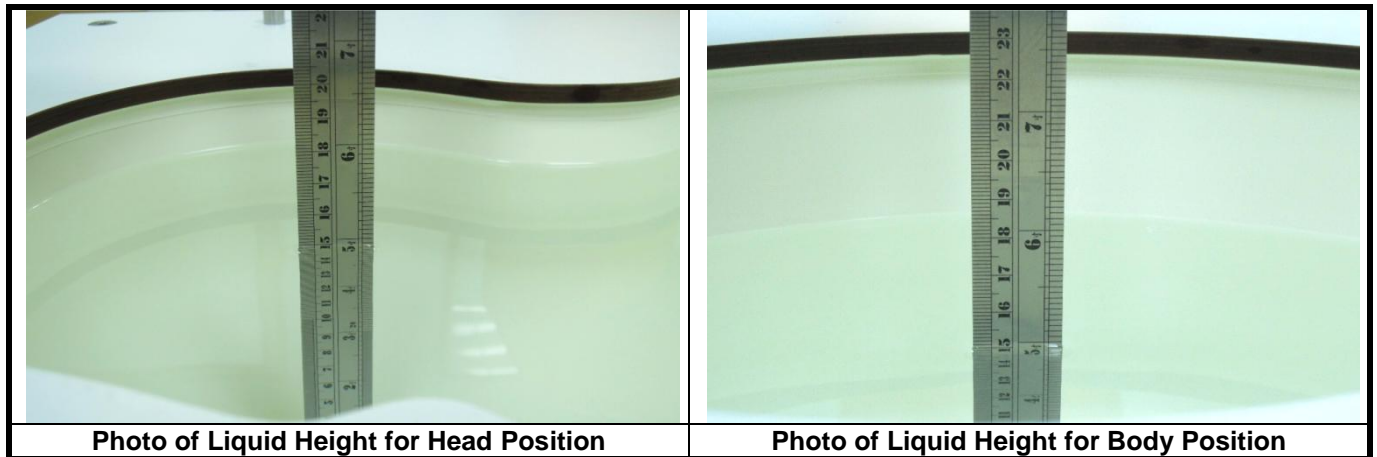
| | | |
|---------------------|---|---|
| Model | Laptop Extensions Kit |  |
| Construction | Simple but effective and easy-to-use extension for Mounting Device that facilitates the testing of larger devices according to IEC 62209-2 (e.g., laptops, cameras, etc.). It is lightweight and fits easily on the upper part of the Mounting Device in place of the phone positioner. | |
| Material | POM, Acrylic glass, Foam | |

3.2.6 System Validation Dipoles

| | | |
|-------------------------|--|---|
| Model | D-Serial |  |
| Construction | Symmetrical dipole with 1/4 balun. Enables measurement of feed point impedance with NWA. Matched for use near flat phantoms filled with tissue simulating solutions. | |
| Frequency | 750 MHz to 5800 MHz | |
| Return Loss | > 20 dB | |
| Power Capability | > 100 W (f < 1GHz), > 40 W (f > 1GHz) | |

3.2.7 Tissue Simulating Liquids

For SAR measurement of the field distribution inside the phantom, the phantom must be filled with homogeneous tissue simulating liquid to a depth of at least 15 cm. For head SAR testing, the liquid height from the ear reference point (ERP) of the phantom to the liquid top surface is larger than 15 cm. For body SAR testing, the liquid height from the center of the flat phantom to the liquid top surface is larger than 15 cm. The nominal dielectric values of the tissue simulating liquids in the phantom and the tolerance of 5% are listed in Table-3.1.



The dielectric properties of the head tissue simulating liquids are defined in IEEE 1528, and KDB 865664 D01 Appendix A. For the body tissue simulating liquids, the dielectric properties are defined in KDB 865664 D01 Appendix A. The dielectric properties of the tissue simulating liquids were verified prior to the SAR evaluation using a dielectric assessment kit and a network analyzer.

Table-3.1 Targets of Tissue Simulating Liquid

| Frequency (MHz) | Target Permittivity | Range of $\pm 5\%$ | Target Conductivity | Range of $\pm 5\%$ |
|-----------------|---------------------|--------------------|---------------------|--------------------|
| For Head | | | | |
| 750 | 41.9 | 39.8 ~ 44.0 | 0.89 | 0.85 ~ 0.93 |
| 835 | 41.5 | 39.4 ~ 43.6 | 0.90 | 0.86 ~ 0.95 |
| 900 | 41.5 | 39.4 ~ 43.6 | 0.97 | 0.92 ~ 1.02 |
| 1450 | 40.5 | 38.5 ~ 42.5 | 1.20 | 1.14 ~ 1.26 |
| 1640 | 40.3 | 38.3 ~ 42.3 | 1.29 | 1.23 ~ 1.35 |
| 1750 | 40.1 | 38.1 ~ 42.1 | 1.37 | 1.30 ~ 1.44 |
| 1800 | 40.0 | 38.0 ~ 42.0 | 1.40 | 1.33 ~ 1.47 |
| 1900 | 40.0 | 38.0 ~ 42.0 | 1.40 | 1.33 ~ 1.47 |
| 2000 | 40.0 | 38.0 ~ 42.0 | 1.40 | 1.33 ~ 1.47 |
| 2300 | 39.5 | 37.5 ~ 41.5 | 1.67 | 1.59 ~ 1.75 |
| 2450 | 39.2 | 37.2 ~ 41.2 | 1.80 | 1.71 ~ 1.89 |
| 2600 | 39.0 | 37.1 ~ 41.0 | 1.96 | 1.86 ~ 2.06 |
| 3500 | 37.9 | 36.0 ~ 39.8 | 2.91 | 2.76 ~ 3.06 |
| 5200 | 36.0 | 34.2 ~ 37.8 | 4.66 | 4.43 ~ 4.89 |
| 5300 | 35.9 | 34.1 ~ 37.7 | 4.76 | 4.52 ~ 5.00 |
| 5500 | 35.6 | 33.8 ~ 37.4 | 4.96 | 4.71 ~ 5.21 |
| 5600 | 35.5 | 33.7 ~ 37.3 | 5.07 | 4.82 ~ 5.32 |
| 5800 | 35.3 | 33.5 ~ 37.1 | 5.27 | 5.01 ~ 5.53 |
| For Body | | | | |
| 750 | 55.5 | 52.7 ~ 58.3 | 0.96 | 0.91 ~ 1.01 |
| 835 | 55.2 | 52.4 ~ 58.0 | 0.97 | 0.92 ~ 1.02 |
| 900 | 55.0 | 52.3 ~ 57.8 | 1.05 | 1.00 ~ 1.10 |
| 1450 | 54.0 | 51.3 ~ 56.7 | 1.30 | 1.24 ~ 1.37 |
| 1640 | 53.8 | 51.1 ~ 56.5 | 1.40 | 1.33 ~ 1.47 |
| 1750 | 53.4 | 50.7 ~ 56.1 | 1.49 | 1.42 ~ 1.56 |
| 1800 | 53.3 | 50.6 ~ 56.0 | 1.52 | 1.44 ~ 1.60 |
| 1900 | 53.3 | 50.6 ~ 56.0 | 1.52 | 1.44 ~ 1.60 |
| 2000 | 53.3 | 50.6 ~ 56.0 | 1.52 | 1.44 ~ 1.60 |
| 2300 | 52.9 | 50.3 ~ 55.5 | 1.81 | 1.72 ~ 1.90 |
| 2450 | 52.7 | 50.1 ~ 55.3 | 1.95 | 1.85 ~ 2.05 |
| 2600 | 52.5 | 49.9 ~ 55.1 | 2.16 | 2.05 ~ 2.27 |
| 3500 | 51.3 | 48.7 ~ 53.9 | 3.31 | 3.14 ~ 3.48 |
| 5200 | 49.0 | 46.6 ~ 51.5 | 5.30 | 5.04 ~ 5.57 |
| 5300 | 48.9 | 46.5 ~ 51.3 | 5.42 | 5.15 ~ 5.69 |
| 5500 | 48.6 | 46.2 ~ 51.0 | 5.65 | 5.37 ~ 5.93 |
| 5600 | 48.5 | 46.1 ~ 50.9 | 5.77 | 5.48 ~ 6.06 |
| 5800 | 48.2 | 45.8 ~ 50.6 | 6.00 | 5.70 ~ 6.30 |

FCC SAR Test Report

The following table gives the recipes for tissue simulating liquids.

Table-3.2 Recipes of Tissue Simulating Liquid

| Tissue Type | Bactericide | DGBE | HEC | NaCl | Sucrose | Triton X-100 | Water | Diethylene Glycol Mono-hexylether |
|-------------|-------------|------|-----|------|---------|--------------|-------|-----------------------------------|
| H750 | 0.2 | - | 0.2 | 1.5 | 56.0 | - | 42.1 | - |
| H835 | 0.2 | - | 0.2 | 1.5 | 57.0 | - | 41.1 | - |
| H900 | 0.2 | - | 0.2 | 1.4 | 58.0 | - | 40.2 | - |
| H1450 | - | 43.3 | - | 0.6 | - | - | 56.1 | - |
| H1640 | - | 45.8 | - | 0.5 | - | - | 53.7 | - |
| H1750 | - | 47.0 | - | 0.4 | - | - | 52.6 | - |
| H1800 | - | 44.5 | - | 0.3 | - | - | 55.2 | - |
| H1900 | - | 44.5 | - | 0.2 | - | - | 55.3 | - |
| H2000 | - | 44.5 | - | 0.1 | - | - | 55.4 | - |
| H2300 | - | 44.9 | - | 0.1 | - | - | 55.0 | - |
| H2450 | - | 45.0 | - | 0.1 | - | - | 54.9 | - |
| H2600 | - | 45.1 | - | 0.1 | - | - | 54.8 | - |
| H3500 | - | 8.0 | - | 0.2 | - | 20.0 | 71.8 | - |
| H5G | - | - | - | - | - | 17.2 | 65.5 | 17.3 |
| B750 | 0.2 | - | 0.2 | 0.8 | 48.8 | - | 50.0 | - |
| B835 | 0.2 | - | 0.2 | 0.9 | 48.5 | - | 50.2 | - |
| B900 | 0.2 | - | 0.2 | 0.9 | 48.2 | - | 50.5 | - |
| B1450 | - | 34.0 | - | 0.3 | - | - | 65.7 | - |
| B1640 | - | 32.5 | - | 0.3 | - | - | 67.2 | - |
| B1750 | - | 31.0 | - | 0.2 | - | - | 68.8 | - |
| B1800 | - | 29.5 | - | 0.4 | - | - | 70.1 | - |
| B1900 | - | 29.5 | - | 0.3 | - | - | 70.2 | - |
| B2000 | - | 30.0 | - | 0.2 | - | - | 69.8 | - |
| B2300 | - | 31.0 | - | 0.1 | - | - | 68.9 | - |
| B2450 | - | 31.4 | - | 0.1 | - | - | 68.5 | - |
| B2600 | - | 31.8 | - | 0.1 | - | - | 68.1 | - |
| B3500 | - | 28.8 | - | 0.1 | - | - | 71.1 | - |
| B5G | - | - | - | - | - | 10.7 | 78.6 | 10.7 |

3.3 SAR System Verification

The system check verifies that the system operates within its specifications. It is performed daily or before every SAR measurement. The system check uses normal SAR measurements in the flat section of the phantom with a matched dipole at a specified distance. The system verification setup is shown as below.

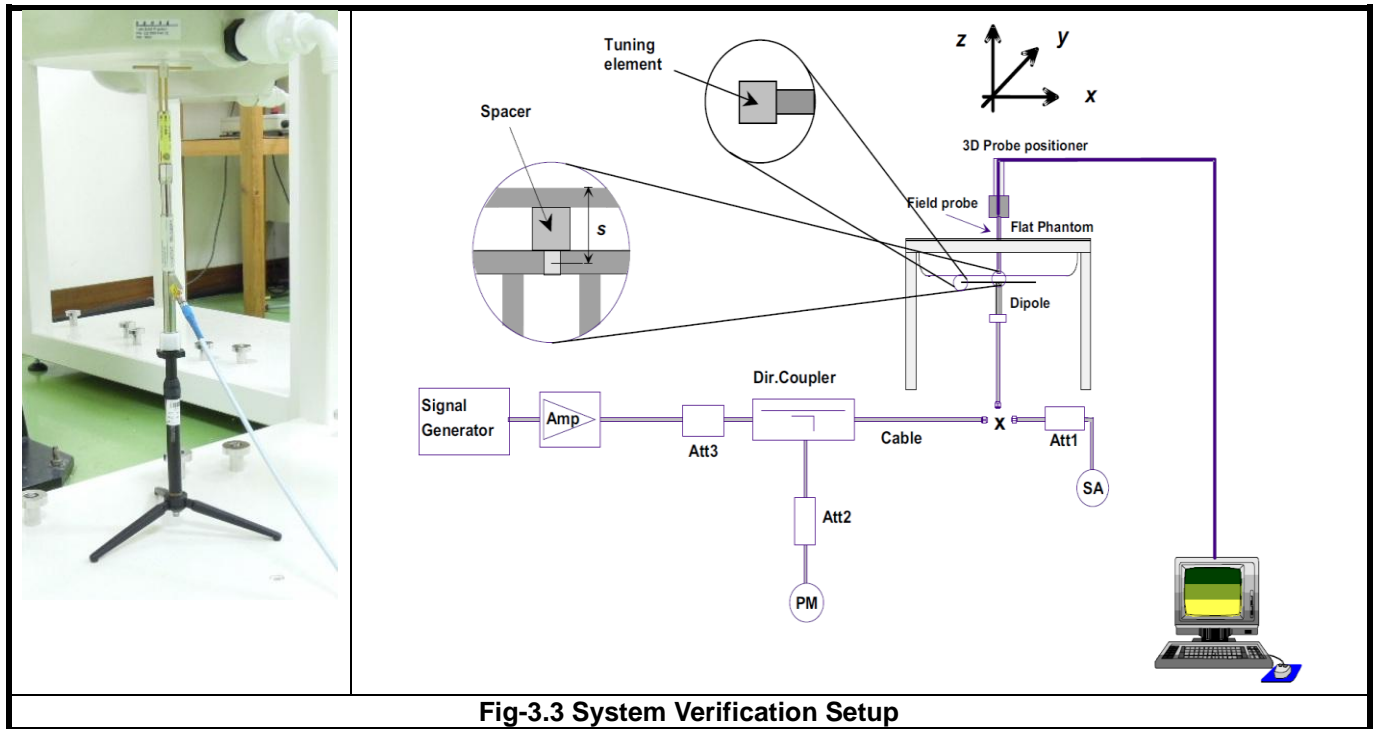


Fig-3.3 System Verification Setup

The validation dipole is placed beneath the flat phantom with the specific spacer in place. The distance spacer is touch the phantom surface with a light pressure at the reference marking and be oriented parallel to the long side of the phantom. The spectrum analyzer measures the forward power at the location of the system check dipole connector. The signal generator is adjusted for the desired forward power (250 mW is used for 700 MHz to 3 GHz, 100 mW is used for 3.5 GHz to 6 GHz) at the dipole connector and the power meter is read at that level. After connecting the cable to the dipole, the signal generator is readjusted for the same reading at power meter.

After system check testing, the SAR result will be normalized to 1W forward input power and compared with the reference SAR value derived from validation dipole certificate report. The deviation of system check should be within 10 %.

3.4 SAR Measurement Procedure

According to the SAR test standard, the recommended procedure for assessing the peak spatial-average SAR value consists of the following steps:

- (a) Power reference measurement
- (b) Area scan
- (c) Zoom scan
- (d) Power drift measurement

The SAR measurement procedures for each of test conditions are as follows:

- (a) Make EUT to transmit maximum output power
- (b) Measure conducted output power through RF cable
- (c) Place the EUT in the specific position of phantom
- (d) Perform SAR testing steps on the DASY system
- (e) Record the SAR value

3.4.1 Area & Zoom Scan Procedure

First Area Scan is used to locate the approximate location(s) of the local peak SAR value(s). The measurement grid within an Area Scan is defined by the grid extent, grid step size and grid offset. Next, in order to determine the EM field distribution in a three-dimensional spatial extension, Zoom Scan is required. The Zoom Scan is performed around the highest E-field value to determine the averaged SAR-distribution over 10 g. According to KDB 865664 D01, the resolution for Area and Zoom scan is specified in the table below.

| Items | <= 2 GHz | 2-3 GHz | 3-4 GHz | 4-5 GHz | 5-6 GHz |
|------------------------------------|----------|----------|----------|----------|----------|
| Area Scan ($\Delta x, \Delta y$) | <= 15 mm | <= 12 mm | <= 12 mm | <= 10 mm | <= 10 mm |
| Zoom Scan ($\Delta x, \Delta y$) | <= 8 mm | <= 5 mm | <= 5 mm | <= 4 mm | <= 4 mm |
| Zoom Scan (Δz) | <= 5 mm | <= 5 mm | <= 4 mm | <= 3 mm | <= 2 mm |
| Zoom Scan Volume | >= 30 mm | >= 30 mm | >= 28 mm | >= 25 mm | >= 22 mm |

Note:

When zoom scan is required and report SAR is <= 1.4 W/kg, the zoom scan resolution of $\Delta x / \Delta y$ (2-3GHz: <= 8 mm, 3-4GHz: <= 7 mm, 4-6GHz: <= 5 mm) may be applied.

3.4.2 Volume Scan Procedure

The volume scan is used for assess overlapping SAR distributions for antennas transmitting in different frequency bands. It is equivalent to an oversized zoom scan used in standalone measurements. The measurement volume will be used to enclose all the simultaneous transmitting antennas. For antennas transmitting simultaneously in different frequency bands, the volume scan is measured separately in each frequency band. In order to sum correctly to compute the 1g aggregate SAR, the EUT remain in the same test position for all measurements and all volume scan use the same spatial resolution and grid spacing. When all volume scan were completed, the software, SEMCAD postprocessor can combine and subsequently superpose these measurement data to calculating the multiband SAR.

3.4.3 Power Drift Monitoring

All SAR testing is under the EUT install full charged battery and transmit maximum output power. In DASY measurement software, the power reference measurement and power drift measurement procedures are used for monitoring the power drift of EUT during SAR test. Both these procedures measure the field at a specified reference position before and after the SAR testing. The software will calculate the field difference in dB. If the power drift more than 5%, the SAR will be retested.

3.4.4 Spatial Peak SAR Evaluation

The procedure for spatial peak SAR evaluation has been implemented according to the test standard. It can be conducted for 1g and 10g, as well as for user-specific masses. The DASY software includes all numerical procedures necessary to evaluate the spatial peak SAR value.

The base for the evaluation is a "cube" measurement. The measured volume must include the 1g and 10g cubes with the highest averaged SAR values. For that purpose, the center of the measured volume is aligned to the interpolated peak SAR value of a previously performed area scan.

The entire evaluation of the spatial peak values is performed within the post-processing engine (SEMCAD). The system always gives the maximum values for the 1g and 10g cubes. The algorithm to find the cube with highest averaged SAR is divided into the following stages:

- (a) Extraction of the measured data (grid and values) from the Zoom Scan
- (b) Calculation of the SAR value at every measurement point based on all stored data (A/D values and measurement parameters)
- (c) Generation of a high-resolution mesh within the measured volume
- (d) Interpolation of all measured values from the measurement grid to the high-resolution grid
- (e) Extrapolation of the entire 3-D field distribution to the phantom surface over the distance from sensor to surface
- (f) Calculation of the averaged SAR within masses of 1g and 10g

3.4.5 SAR Averaged Methods

In DASY, the interpolation and extrapolation are both based on the modified Quadratic Shepard's method. The interpolation scheme combines a least-square fitted function method and a weighted average method which are the two basic types of computational interpolation and approximation.

Extrapolation routines are used to obtain SAR values between the lowest measurement points and the inner phantom surface. The extrapolation distance is determined by the surface detection distance and the probe sensor offset. The uncertainty increases with the extrapolation distance. To keep the uncertainty within 1% for the 1 g and 10 g cubes, the extrapolation distance should not be larger than 5 mm.

4. SAR Measurement Evaluation

4.1 EUT Configuration and Setting

<Considerations Related to Proximity Sensor>

The device supports WWAN, WLAN, and Bluetooth capabilities. It is designed with a proximity sensor which can trigger/not trigger power reduction for WCDMA and LTE on Rear Face and Top Side of EUT for SAR compliance. Others RF capability (WLAN and Bluetooth) have no power reduction. The power levels for all wireless technologies and the power reduction please refer to section 4.6 of this report.

Proximity Sensor Triggering Distances (KDB 616217 D04 §6.2)

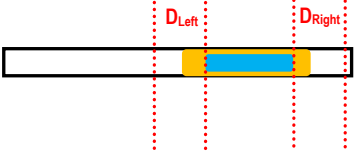
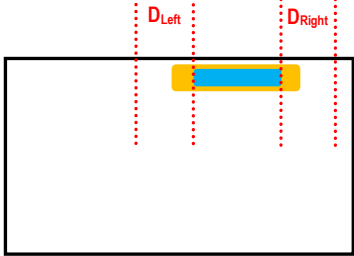
The proximity sensor triggering distance was determined per KDB 616217 for rear face and applicable edge. Summary for power verification per distance was tabulated in the below table.

| Output Power Verification in dBm for EUT Rear Face | | | | | | | | | | | |
|--|------|------|------|------|------|------|------|------|------|------|------|
| Distance (mm) | 7 | 8 | 9 | 10 | 11 | 12 | 13 | 14 | 15 | 16 | 17 |
| WCDMA V | 15.1 | 14.7 | 14.8 | 15.1 | 14.9 | 14.9 | 23.4 | 23.5 | 23.2 | 23.6 | 23.4 |
| LTE 5 | 15.4 | 15.4 | 15.2 | 15.3 | 15.4 | 15.4 | 23.7 | 23.4 | 23.6 | 23.5 | 23.3 |

| Output Power Verification in dBm for EUT Top Edge | | | | | | | | | | | |
|---|------|------|------|------|------|------|------|------|------|------|------|
| Distance (mm) | 5 | 6 | 7 | 8 | 9 | 10 | 11 | 12 | 13 | 14 | 15 |
| WCDMA V | 14.8 | 15.0 | 15.0 | 15.1 | 14.9 | 15.1 | 23.3 | 23.7 | 23.2 | 23.5 | 23.4 |
| LTE 5 | 15.5 | 15.1 | 15.2 | 15.4 | 15.6 | 15.3 | 23.3 | 23.2 | 23.4 | 23.3 | 23.7 |

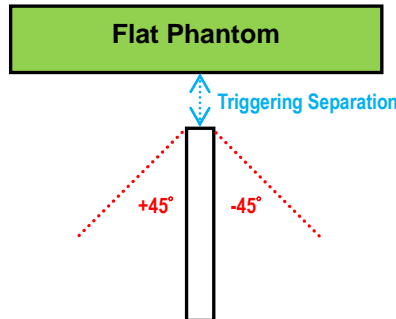
Proximity Sensor Coverage (KDB 616217 D04 §6.3)

The proximity sensor coverage was determined per KDB 616217 for rear face and applicable edge. Summary for proximity sensor active region is illustrated in below.

| | |
|---|---|
|  |  |
| <p>P-sensor Coverage for Rear Face: D_{Left} is 2 mm, D_{Right} is 3 mm</p> | <p>P-sensor Coverage for Top Edge: D_{Left} is 10 mm, D_{Right} is 8 mm</p> |

Proximity Sensor Tilt Angle Influences (KDB 616217 D04 §6.4)

The proximity sensor tilt angle influence was determined per KDB 616217 for applicable edge. Summary for proximity sensor tilt angle influence is shown in below.



| Orientation | Separation Distance (mm) | Tilt Angle | | | | | | | | | | |
|-------------|--------------------------|------------|------|------|------|------|----|-----|-----|-----|-----|-----|
| | | -45° | -40° | -30° | -20° | -10° | 0° | 10° | 20° | 30° | 40° | 45° |
| Top Edge | 11 | On | On | On | On | On | On | On | On | On | On | On |

Summary for Proximity Sensor Triggering Test

According to the procedures noticed in KDB 616217 D04, the proximity sensor triggering distance is 13 mm for EUT Rear Face, and 11 mm for Top Side. The separation distance of 11 mm determined by the smallest triggering distance on Top Side is used to access the tilt angle influence and the sensor does not release during ±45 degree. Therefore, the smallest separation distance for tilt angle influence is 11 mm for the Top Side. The conservation triggering distances based on the separation distance for the sensor trigger / not triggered as EUT with power reduction at 0 mm, and EUT without power reduction at 12 mm for EUT Rear Face, and 10 mm for Top Side were used to test SAR.

The power reduction is depends on the proximity sensor input. For a steady SAR test, the power reduction was enabled or disabled manually by engineering software during SAR testing.

<Connections between EUT and System Simulator>

For WWAN SAR testing, the EUT was linked and controlled by base station emulator. Communication between the EUT and the emulator was established by air link. The distance between the EUT and the communicating antenna of the emulator is larger than 50 cm and the output power radiated from the emulator antenna is at least 30 dB smaller than the output power of EUT. The EUT was set from the emulator to radiate maximum output power during SAR testing.

<Considerations Related to WCDMA for Setup and Testing>

Release 5 HSDPA Data Devices

The 3G SAR test reduction procedure is applied to body SAR with 12.2 kbps RMC as the primary mode. Otherwise, body SAR for HSDPA is measured using an FRC with H-Set 1 in Sub-test 1 and a 12.2 kbps RMC configured in Test Loop Mode 1, for the highest reported SAR configuration in 12.2 kbps RMC without HSDPA. HSDPA is configured according to the applicable UE category of a test device. The number of HS-DSCH / HS-PDSCHs, HARQ processes, minimum inter-TTI interval, transport block sizes and RV coding sequence are defined by the H-set. To maintain a consistent test configuration and stable transmission conditions, QPSK is used in the H-set for SAR testing. HS-DPCCH should be configured with a CQI feedback cycle of 4 ms and a CQI repetition factor of 2 to maintain a constant rate of active CQI slots. DPCCH and DPDCH gain factors (β_c , β_d), and HS-DPCCH power offset parameters (Δ_{ACK} , Δ_{NACK} , Δ_{CQI}) are set according to values indicated in below. The CQI value is determined by the UE category, transport block size, number of HS-PDSCHs and modulation used in the H-set.

| Sub-test | β_c | β_d | β_d (SF) | β_c/β_d | $\beta_{HS}^{(1)(2)}$ | CM ⁽³⁾ (dB) | MPR ⁽³⁾ (dB) |
|----------|----------------------|----------------------|----------------|----------------------|-----------------------|------------------------|-------------------------|
| 1 | 2/15 | 15/15 | 64 | 2/15 | 4/15 | 0.0 | 0.0 |
| 2 | 12/15 ⁽⁴⁾ | 15/15 ⁽⁴⁾ | 64 | 12/15 ⁽⁴⁾ | 24/15 | 1.0 | 0.0 |
| 3 | 15/15 | 8/15 | 64 | 15/8 | 30/15 | 1.5 | 0.5 |
| 4 | 15/15 | 4/15 | 64 | 15/4 | 30/15 | 1.5 | 0.5 |

Note 1: Δ_{ACK} , Δ_{NACK} and Δ_{CQI} = 30/15 with β_{HS} = 30/15 * β_c .
 Note 2: For the HS-DPCCH power mask requirement test in clause 5.2C, 5.7A, and the Error Vector Magnitude (EVM) with HS-DPCCH test in clause 5.13.1A, and HSDPA EVM with phase discontinuity in clause 5.13.1AA, Δ_{ACK} and Δ_{NACK} = 30/15 with β_{HS} = 30/15 * β_c , and Δ_{CQI} = 24/15 with β_{HS} = 24/15 * β_c .
 Note 3: CM = 1 for β_c/β_d = 12/15, β_{HS}/β_c = 24/15. For all other combinations of DPDCH, DPCCH and HS-DPCCH the MPR is based on the relative CM difference. This is applicable for only UEs that support HSDPA in release 6 and later releases.
 Note 4: For subtest 2 the β_c/β_d ratio of 12/15 for the TFC during the measurement period (TF1, TF0) is achieved by setting the signalled gain factors for the reference TFC (TF1, TF1) to β_c = 11/15 and β_d = 15/15.

Release 6 HSUPA Data Devices

The 3G SAR test reduction procedure is applied to body SAR with 12.2 kbps RMC as the primary mode. Otherwise, body SAR for HSPA is measured with E-DCH Sub-test 5, using H-Set 1 and QPSK for FRC and a 12.2 kbps RMC configured in Test Loop Mode 1 and power control algorithm 2, according to the highest reported body SAR configuration in 12.2 kbps RMC without HSPA. When VOIP applies to head exposure, the 3G SAR test reduction procedure is applied with 12.2 kbps RMC as the primary mode. Otherwise, the same HSPA configuration used for body SAR measurements are applied to head exposure testing. Due to inner loop power control requirements in HSPA, a communication test set is required for output power and SAR tests. The 12.2 kbps RMC, FRC H-set 1 and E-DCH configurations for HSPA are configured according to the β values indicated in below.

FCC SAR Test Report

| Sub-test | β_c | β_d | β_d (SF) | β_c / β_d | $\beta_{HS}^{(1)}$ | β_{ec} | $\beta_{ed}^{(4)(5)}$ | β_{ed} (SF) | β_{ed} (Codes) | CM ⁽²⁾ (dB) | MPR ⁽²⁾⁽⁶⁾ (dB) | AG ⁽⁵⁾ Index | E-TFCI |
|----------|----------------------|----------------------|----------------|----------------------|--------------------|--------------|--|-------------------|----------------------|------------------------|----------------------------|-------------------------|--------|
| 1 | 11/15 ⁽³⁾ | 15/15 ⁽³⁾ | 64 | 11/15 ⁽³⁾ | 22/15 | 209/225 | 1309/225 | 4 | 1 | 1.0 | 0.0 | 20 | 75 |
| 2 | 6/15 | 15/15 | 64 | 6/15 | 12/15 | 12/15 | 94/75 | 4 | 1 | 3.0 | 2.0 | 12 | 67 |
| 3 | 15/15 | 9/15 | 64 | 15/9 | 30/15 | 30/15 | $\beta_{ed1}: 47/15$ $\beta_{ed2}: 47/15$ | 4 4 | 2 | 2.0 | 1.0 | 15 | 92 |
| 4 | 2/15 | 15/15 | 64 | 2/15 | 4/15 | 2/15 | 56/75 | 4 | 1 | 3.0 | 2.0 | 17 | 71 |
| 5 | 15/15 | 0 | - | - | 5/15 | 5/15 | 47/15 | 4 | 1 | 1.0 | 0.0 | 12 | 67 |

Note 1: For sub-test 1 to 4, Δ_{ACK} , Δ_{NACK} and $\Delta_{CQI} = 30/15$ with $\beta_{HS} = 30/15 * \beta_c$. For sub-test 5, Δ_{ACK} , Δ_{NACK} and $\Delta_{CQI} = 5/15$ with $\beta_{HS} = 5/15 * \beta_c$.
Note 2: CM = 1 for $\beta_c/\beta_d = 12/15$, $\beta_{HS}/\beta_c = 24/15$. For all other combinations of DPDCH, DPCCH, HS-DPCCH, E-DPDCH and E-DPCCH the MPR is based on the relative CM difference.
Note 3: For subtest 1 the β_c/β_d ratio of 11/15 for the TFC during the measurement period (TF1, TF0) is achieved by setting the signalled gain factors for the reference TFC (TF1, TF1) to $\beta_c = 10/15$ and $\beta_d = 15/15$.
Note 4: In case of testing by UE using E-DPDCH Physical Layer category 1, Sub-test 3 is omitted according to TS25.306 Table 5.1g.
Note 5: β_{ed} can not be set directly; it is set by Absolute Grant Value.
Note 6: For subtests 2, 3 and 4, UE may perform E-DPDCH power scaling at max power which could results in slightly smaller MPR values.

<Considerations Related to LTE for Setup and Testing>

This device contains LTE transmitter which follows 3GPP standards, is category 3, supports both QPSK and QAM modulations, and supported LTE band and channel bandwidth is listed in below. The output power was tested per 3GPP TS 36.521-1 maximum transmit procedures for both QPSK and QAM modulation. The results please refer to section 4.6 of this report.

| EUT Supported LTE Band and Channel Bandwidth | | | | | | |
|--|------------|----------|----------|-----------|-----------|-----------|
| LTE Band | BW 1.4 MHz | BW 3 MHz | BW 5 MHz | BW 10 MHz | BW 15 MHz | BW 20 MHz |
| 5 | V | V | V | V | | |

The LTE maximum power reduction (MPR) in accordance with 3GPP TS 36.101 is active all times during LTE operation. The allowed MPR for the maximum output power is specified in below.

| Modulation | Channel Bandwidth / RB Configurations | | | | | | LTE MPR Setting (dB) |
|------------|---------------------------------------|----------|----------|-----------|-----------|-----------|----------------------|
| | BW 1.4 MHz | BW 3 MHz | BW 5 MHz | BW 10 MHz | BW 15 MHz | BW 20 MHz | |
| QPSK | > 5 | > 4 | > 8 | > 12 | > 16 | > 18 | 1 |
| 16QAM | <= 5 | <= 4 | <= 8 | <= 12 | <= 16 | <= 18 | 1 |
| 16QAM | > 5 | > 4 | > 8 | > 12 | > 16 | > 18 | 2 |

Note: MPR is according to the standard and implemented in the circuit (mandatory).

In addition, the device is compliant with additional maximum power reduction (A-MPR) requirements defined in 3GPP TS 36.101 section 6.2.4 that was disabled for all FCC compliance testing.

During LTE SAR testing, the related parameters of operating band, channel bandwidth, uplink channel number, modulation type, and RB was set in base station simulator. When the EUT has registered and communicated to base station simulator, the simulator set to make EUT transmitting the maximum radiated power.

<Considerations Related to WLAN for Setup and Testing>

In general, various vendor specific external test software and chipset based internal test modes are typically used for SAR measurement. These chipset based test mode utilities are generally hardware and manufacturer dependent, and often include substantial flexibility to reconfigure or reprogram a device. A Wi-Fi device must be configured to transmit continuously at the required data rate, channel bandwidth and signal modulation, using the highest transmission duty factor supported by the test mode tools for SAR measurement. The test frequencies established using test mode must correspond to the actual channel frequencies. When 802.11 frame gaps are accounted for in the transmission, a maximum transmission duty factor of 92 - 96% is typically achievable in most test mode configurations. A minimum transmission duty factor of 85% is required to avoid certain hardware and device implementation issues related to wide range SAR scaling. In addition, a periodic transmission duty factor is required for current generation SAR systems to measure SAR correctly. The reported SAR must be scaled to 100% transmission duty factor to determine compliance at the maximum tune-up tolerance limit.

According to KDB 248227 D01, this device has installed WLAN engineering testing software which can provide continuous transmitting RF signal. During WLAN SAR testing, this device was operated to transmit continuously at the maximum transmission duty with specified transmission mode, operating frequency, lowest data rate, and maximum output power.

Initial Test Configuration

An initial test configuration is determined for OFDM transmission modes in 2.4 GHz and 5 GHz bands according to the channel bandwidth, modulation and data rate combination(s) with the highest maximum output power specified for production units in each standalone and aggregated frequency band. When the same maximum power is specified for multiple transmission modes in a frequency band, the largest channel bandwidth, lowest order modulation, lowest data rate and lowest order 802.11a/g/n/ac mode is used for SAR measurement, on the highest measured output power channel in the initial test configuration, for each frequency band.

Subsequent Test Configuration

SAR measurement requirements for the remaining 802.11 transmission mode configurations that have not been tested in the initial test configuration are determined separately for each standalone and aggregated frequency band, in each exposure condition, according to the maximum output power specified for production units. Additional power measurements may be required to determine if SAR measurements are required for subsequent highest output power channels in a subsequent test configuration. When the highest reported SAR for the initial test configuration according to the initial test position or fixed exposure position requirements, is adjusted by the ratio of the subsequent test configuration to initial test configuration specified maximum output power and the adjusted SAR is ≤ 1.2 W/kg, SAR is not required for that subsequent test configuration.

SAR Test Configuration and Channel Selection

When multiple channel bandwidth configurations in a frequency band have the same specified maximum output power, the initial test configuration is using largest channel bandwidth, lowest order modulation, lowest data rate, and lowest order 802.11 mode (i.e., 802.11a is chosen over 802.11n then 802.11ac or 802.11g is chosen over 802.11n). After an initial test configuration is determined, if multiple test channels have the same measured maximum output power, the channel chosen for SAR measurement is determined according to the following.

- 1) The channel closest to mid-band frequency is selected for SAR measurement.
- 2) For channels with equal separation from mid-band frequency; for example, high and low channels or two mid-band channels, the higher frequency (number) channel is selected for SAR measurement.

Test Reduction for U-NII-1 (5.2 GHz) and U-NII-2A (5.3 GHz) Bands

For devices that operate in both U-NII bands using the same transmitter and antenna(s), SAR test reduction is determined according to the following.

- 1) When the same maximum output power is specified for both bands, begin SAR measurement in U-NII-2A band by applying the OFDM SAR requirements. If the highest reported SAR for a test configuration is ≤ 1.2 W/kg, SAR is not required for U-NII-1 band for that configuration (802.11 mode and exposure condition).
- 2) When different maximum output power is specified for the bands, begin SAR measurement in the band with higher specified maximum output power. The highest reported SAR for the tested configuration is adjusted by the ratio of lower to higher specified maximum output power for the two bands. When the adjusted SAR is ≤ 1.2 W/kg, SAR is not required for the band with lower maximum output power in that test configuration.

<Considerations Related to Bluetooth for Setup and Testing>

This device has installed Bluetooth engineering testing software which can provide continuous transmitting RF signal. During Bluetooth SAR testing, this device was operated to transmit continuously at the maximum transmission duty with specified transmission mode, operating frequency, lowest data rate, and maximum output power.

4.2 EUT Testing Position

4.2.1 Body Exposure Conditions

For full-size tablet, according to KDB 616217 D04, SAR evaluation is required for back surface and edges of the devices. The back surface and edges of the tablet are tested with the tablet touching the phantom. Exposures from antennas through the front surface of the display section of a tablet are generally limited to the user's hands. Exposures to hands for typical consumer transmitters used in tablets are not expected to exceed the extremity SAR limit; therefore, SAR evaluation for the front surface of tablet display screens are generally not necessary. When voice mode is supported on a tablet and it is limited to speaker mode or headset operations only, additional SAR testing for this type of voice use is not required.

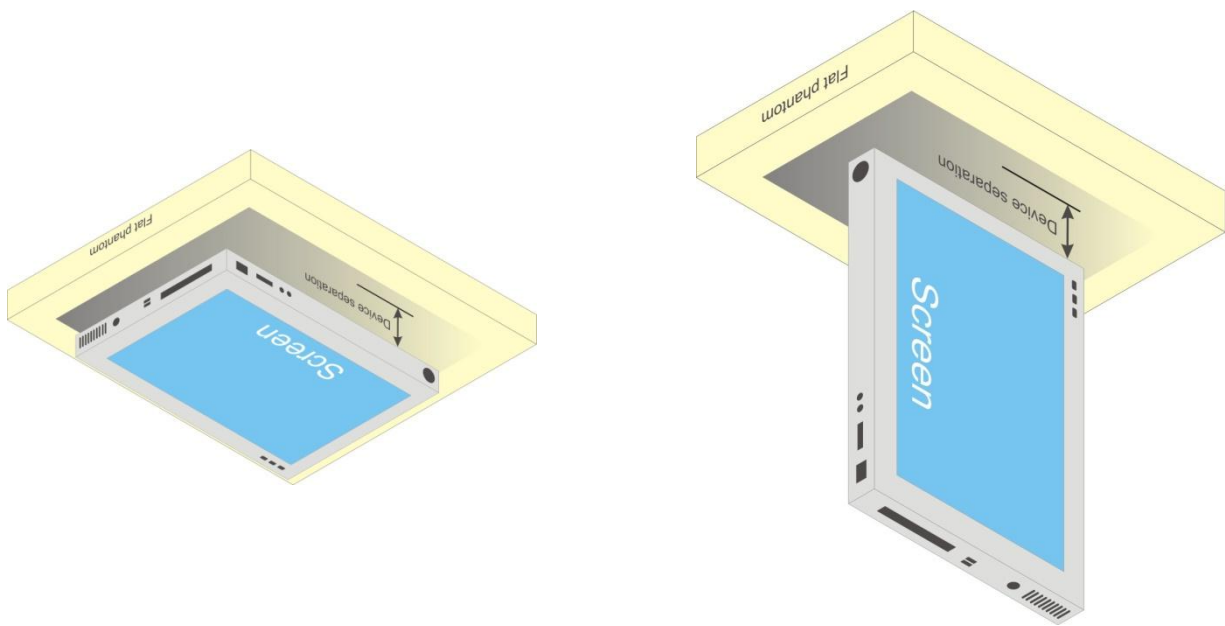


Fig-4.1 Illustration for Tablet Setup

FCC SAR Test Report

4.2.2 SAR Test Exclusion Evaluations

According to KDB 447498 D01, the SAR test exclusion condition is based on source-based time-averaged maximum conducted output power, adjusted for tune-up tolerance, and the minimum test separation distance required for the exposure conditions. The SAR exclusion threshold is determined by the following formula.

1. For the test separation distance ≤ 50 mm

$$\frac{\text{Max. Tune up Power}_{(mW)}}{\text{Min. Test Separation Distance}_{(mm)}} \times \sqrt{f_{(GHz)}} \leq 3.0 \text{ for SAR-1g, } \leq 7.5 \text{ for SAR-10g}$$

When the minimum test separation distance is < 5 mm, a distance of 5 mm is applied to determine SAR test exclusion.

2. For the test separation distance > 50 mm, and the frequency at 100 MHz to 1500 MHz

$$\left[(\text{Threshold at 50 mm in Step 1}) + (\text{Test Separation Distance} - 50 \text{ mm}) \times \left(\frac{f_{(MHz)}}{150} \right) \right]_{(mW)}$$

3. For the test separation distance > 50 mm, and the frequency at > 1500 MHz to 6 GHz

$$[(\text{Threshold at 50 mm in Step 1}) + (\text{Test Separation Distance} - 50 \text{ mm}) \times 10]_{(mW)}$$

| Mode | Max. Tune-up Power (dBm) | Max. Tune-up Power (mW) | Rear Face | | | Left Side | | | Right Side | | | Top Side | | | Bottom Side | | |
|---------|--------------------------|-------------------------|----------------------|-------------------|----------------------|----------------------|-------------------|----------------------|----------------------|-------------------|----------------------|----------------------|-------------------|----------------------|----------------------|-------------------|----------------------|
| | | | Ant. to Surface (mm) | Calculated Result | Require SAR Testing? | Ant. to Surface (mm) | Calculated Result | Require SAR Testing? | Ant. to Surface (mm) | Calculated Result | Require SAR Testing? | Ant. to Surface (mm) | Calculated Result | Require SAR Testing? | Ant. to Surface (mm) | Calculated Result | Require SAR Testing? |
| WCDMA V | 24.0 | 251.19 | 5 | 46.22 | Yes | 177 | 880 mW | No | 35 | 6.60 | Yes | 5 | 46.2 | Yes | 158 | 773 mW | No |
| LTE 5 | 24.0 | 251.19 | 5 | 46.27 | Yes | 177 | 881 mW | No | 35 | 6.61 | Yes | 5 | 46.2 | Yes | 158 | 774 mW | No |

<For BT/WLAN Ant-0 >

| Mode | Max. Tune-up Power (dBm) | Max. Tune-up Power (mW) | Rear Face | | | Left Side | | | Right Side | | | Top Side | | | Bottom Side | | |
|-----------|--------------------------|-------------------------|----------------------|-------------------|----------------------|----------------------|-------------------|----------------------|----------------------|-------------------|----------------------|----------------------|-------------------|----------------------|----------------------|-------------------|----------------------|
| | | | Ant. to Surface (mm) | Calculated Result | Require SAR Testing? | Ant. to Surface (mm) | Calculated Result | Require SAR Testing? | Ant. to Surface (mm) | Calculated Result | Require SAR Testing? | Ant. to Surface (mm) | Calculated Result | Require SAR Testing? | Ant. to Surface (mm) | Calculated Result | Require SAR Testing? |
| WLAN 2.4G | 8 | 6.31 | 5 | 2 | No | 58 | 176 mW | No | 183 | 1426 mW | No | 5 | 2 | No | 158 | 1176 mW | No |
| WLAN 5.2G | 5 | 3.16 | 5 | 1.4 | No | 58 | 146 mW | No | 183 | 1396 mW | No | 5 | 1.4 | No | 158 | 1146 mW | No |
| WLAN 5.3G | 5 | 3.16 | 5 | 1.5 | No | 58 | 145 mW | No | 183 | 1395 mW | No | 5 | 1.5 | No | 158 | 1145 mW | No |
| WLAN 5.6G | 5 | 3.16 | 5 | 1.5 | No | 58 | 143 mW | No | 183 | 1393 mW | No | 5 | 1.5 | No | 158 | 1143 mW | No |
| BT | 11 | 12.59 | 5 | 4 | YES | 58 | 175 mW | No | 183 | 1425 mW | No | 5 | 4 | YES | 158 | 1175 mW | No |

<For WLAN Ant-1>

| Mode | Max. Tune-up Power (dBm) | Max. Tune-up Power (mW) | Rear Face | | | Left Side | | | Right Side | | | Top Side | | | Bottom Side | | |
|-----------|--------------------------|-------------------------|----------------------|-------------------|----------------------|----------------------|-------------------|----------------------|----------------------|-------------------|----------------------|----------------------|-------------------|----------------------|----------------------|-------------------|----------------------|
| | | | Ant. to Surface (mm) | Calculated Result | Require SAR Testing? | Ant. to Surface (mm) | Calculated Result | Require SAR Testing? | Ant. to Surface (mm) | Calculated Result | Require SAR Testing? | Ant. to Surface (mm) | Calculated Result | Require SAR Testing? | Ant. to Surface (mm) | Calculated Result | Require SAR Testing? |
| WLAN 2.4G | 7.5 | 5.62 | 5 | 1.8 | No | 93 | 526 mW | No | 151 | 1106 mW | No | 5 | 1.8 | No | 158 | 1176 mW | No |
| WLAN 5.2G | 4.5 | 2.82 | 5 | 1.3 | No | 93 | 496 mW | No | 151 | 1076 mW | No | 5 | 1.3 | No | 158 | 1146 mW | No |
| WLAN 5.3G | 4.5 | 2.82 | 5 | 1.3 | No | 93 | 495 mW | No | 151 | 1075 mW | No | 5 | 1.3 | No | 158 | 1145 mW | No |
| WLAN 5.6G | 5 | 3.16 | 5 | 1.5 | No | 93 | 493 mW | No | 151 | 1073 mW | No | 5 | 1.5 | No | 158 | 1143 mW | No |

FCC SAR Test Report

<For WLAN Ant-0 + Ant-1>

| Mode | Max. Tune-up Power (dBm) | Max. Tune-up Power (mW) | Rear Face | | | Left Side | | | Right Side | | | Top Side | | | Bottom Side | | |
|-----------|--------------------------|-------------------------|----------------------|-------------------|----------------------|----------------------|-------------------|----------------------|----------------------|-------------------|----------------------|----------------------|-------------------|----------------------|----------------------|-------------------|----------------------|
| | | | Ant. to Surface (mm) | Calculated Result | Require SAR Testing? | Ant. to Surface (mm) | Calculated Result | Require SAR Testing? | Ant. to Surface (mm) | Calculated Result | Require SAR Testing? | Ant. to Surface (mm) | Calculated Result | Require SAR Testing? | Ant. to Surface (mm) | Calculated Result | Require SAR Testing? |
| WLAN 2.4G | 10.5 | 11.22 | 5 | 3.5 | YES | 58 | 176 mW | No | 151 | 1106 mW | No | 5 | 3.5 | YES | 158 | 1176 mW | No |
| WLAN 5.2G | 8.5 | 7.08 | 5 | 3.2 | YES | 58 | 146 mW | No | 151 | 1076 mW | No | 5 | 3.2 | YES | 158 | 1146 mW | No |
| WLAN 5.3G | 8.5 | 7.08 | 5 | 3.3 | YES | 58 | 145 mW | No | 151 | 1075 mW | No | 5 | 3.3 | YES | 158 | 1145 mW | No |
| WLAN 5.6G | 8.5 | 7.08 | 5 | 3.4 | YES | 58 | 143 mW | No | 151 | 1073 mW | No | 5 | 3.4 | YES | 158 | 1143 mW | No |

Note:

1. When separation distance ≤ 50 mm and the calculated result shown in above table is ≤ 3.0 for SAR-1g exposure condition, or ≤ 7.5 for SAR-10g exposure condition, the SAR testing exclusion is applied.
2. When separation distance > 50 mm and the device output power is less than the calculated result (power threshold, mW) shown in above table, the SAR testing exclusion is applied.

4.3 Tissue Verification

The measuring results for tissue simulating liquid are shown as below.

| Test Date | Tissue Type | Frequency (MHz) | Liquid Temp. (°C) | Measured Conductivity (σ) | Measured Permittivity (ϵ_r) | Target Conductivity (σ) | Target Permittivity (ϵ_r) | Conductivity Deviation (%) | Permittivity Deviation (%) |
|---------------|-------------|-----------------|-------------------|------------------------------------|--|----------------------------------|--------------------------------------|----------------------------|----------------------------|
| Aug. 31, 2017 | Body | 835 | 23.3 | 1.015 | 56.103 | 0.97 | 55.2 | 4.64 | 1.64 |
| Sep. 01, 2017 | Body | 835 | 23.3 | 1.001 | 54.206 | 0.97 | 55.2 | 3.20 | -1.80 |
| Sep. 02, 2017 | Body | 2450 | 23.4 | 2.035 | 51.373 | 1.95 | 52.7 | 4.36 | -2.52 |
| Sep. 03, 2017 | Body | 2450 | 23.3 | 2.012 | 51.208 | 1.95 | 52.7 | 3.18 | -2.83 |
| Sep. 05, 2017 | Body | 2450 | 23.3 | 2.037 | 50.523 | 1.95 | 52.7 | 4.46 | -4.13 |
| Sep. 02, 2017 | Body | 5300 | 23.3 | 5.529 | 47.086 | 5.42 | 48.9 | 2.01 | -3.71 |
| Sep. 03, 2017 | Body | 5300 | 23.2 | 5.481 | 47.372 | 5.42 | 48.9 | 1.13 | -3.12 |
| Sep. 03, 2017 | Body | 5600 | 23.3 | 5.885 | 46.751 | 5.77 | 48.5 | 1.99 | -3.61 |

Note:

The dielectric properties of the tissue simulating liquid must be measured within 24 hours before the SAR testing and within $\pm 5\%$ of the target values. Liquid temperature during the SAR testing must be within ± 2 °C.

FCC SAR Test Report

4.4 System Validation

The SAR measurement system was validated according to procedures in KDB 865664 D01. The validation status in tabulated summary is as below.

| Test Date | Probe S/N | Calibration Point | | Measured Conductivity (σ) | Measured Permittivity (ϵ_r) | Validation for CW | | | Validation for Modulation | | |
|---------------|-----------|-------------------|------|------------------------------------|--|-------------------|-----------------|----------------|---------------------------|-------------|------|
| | | | | | | Sensitivity Range | Probe Linearity | Probe Isotropy | Modulation Type | Duty Factor | PAR |
| Aug. 31, 2017 | 1790 | Body | 835 | 1.015 | 56.103 | Pass | Pass | Pass | N/A | N/A | N/A |
| Sep. 01, 2017 | 1790 | Body | 835 | 1.001 | 54.206 | Pass | Pass | Pass | N/A | N/A | N/A |
| Sep. 02, 2017 | 7351 | Body | 2450 | 2.035 | 51.373 | Pass | Pass | Pass | OFDM | N/A | Pass |
| Sep. 03, 2017 | 7351 | Body | 2450 | 2.012 | 51.208 | Pass | Pass | Pass | OFDM | N/A | Pass |
| Sep. 05, 2017 | 7351 | Body | 2450 | 2.037 | 50.523 | Pass | Pass | Pass | OFDM | N/A | Pass |
| Sep. 02, 2017 | 7351 | Body | 5300 | 5.529 | 47.086 | Pass | Pass | Pass | OFDM | N/A | Pass |
| Sep. 03, 2017 | 7351 | Body | 5300 | 5.481 | 47.372 | Pass | Pass | Pass | OFDM | N/A | Pass |
| Sep. 03, 2017 | 7351 | Body | 5600 | 5.885 | 46.751 | Pass | Pass | Pass | OFDM | N/A | Pass |

4.5 System Verification

The measuring result for system verification is tabulated as below.

| Test Date | Mode | Frequency (MHz) | 1W Target SAR-1g (W/kg) | Measured SAR-1g (W/kg) | Normalized to 1W SAR-1g (W/kg) | Deviation (%) | Dipole S/N | Probe S/N | DAE S/N |
|---------------|------|-----------------|-------------------------|------------------------|--------------------------------|---------------|------------|-----------|---------|
| Aug. 31, 2017 | Body | 835 | 9.60 | 2.22 | 8.88 | -7.50 | 4d092 | 1790 | 917 |
| Sep. 01, 2017 | Body | 835 | 9.60 | 2.25 | 9.00 | -6.25 | 4d092 | 1790 | 917 |
| Sep. 02, 2017 | Body | 2450 | 51.60 | 12.40 | 49.60 | -3.88 | 869 | 7351 | 861 |
| Sep. 03, 2017 | Body | 2450 | 51.60 | 13.40 | 53.60 | 3.88 | 869 | 7351 | 861 |
| Sep. 05, 2017 | Body | 2450 | 51.60 | 12.60 | 50.40 | -2.33 | 869 | 3971 | 916 |
| Sep. 02, 2017 | Body | 5300 | 76.40 | 8.22 | 82.20 | 7.59 | 1203 | 7351 | 861 |
| Sep. 03, 2017 | Body | 5300 | 76.40 | 8.02 | 80.20 | 4.97 | 1203 | 7351 | 861 |
| Sep. 03, 2017 | Body | 5600 | 77.40 | 8.09 | 80.90 | 4.52 | 1203 | 7351 | 861 |

Note:

Comparing to the reference SAR value provided by SPEAG, the validation data should be within its specification of 10 %. The result indicates the system check can meet the variation criterion and the plots can be referred to Appendix A of this report.

FCC SAR Test Report

4.6 Maximum Output Power

4.6.1 Maximum Target Conducted Power

The maximum conducted average power (Unit: dBm) including tune-up tolerance is shown as below.

| Mode | WCDMA Band V (without Power Reduction) | WCDMA Band V (with Power Reduction) | Power Reduction (dB) |
|--------------------------|---|--|-------------------------|
| RMC 12.2K | 24 | 16 | 8 |
| HSDPA / HSUPA / DC-HSDPA | 23 | 15 | 8 |

| Mode | LTE 5 (without Power Reduction) | LTE 5 (with Power Reduction) | Power Reduction (dB) |
|----------------------|------------------------------------|---------------------------------|-------------------------|
| Maximum Target Power | 24 | 16 | 8 |

| Mode | 2.4G WLAN | 5.2G WLAN | 5.3G WLAN | 5.6G WLAN |
|----------------|-----------------------------------|----------------------------------|----------------------------------|----------------------------------|
| 802.11b | ANT0 8 ANT1 7.5 | N/A | N/A | N/A |
| 802.11g | ANT0 8 ANT1 7.5 | N/A | N/A | N/A |
| 802.11a | N/A | ANT0 5 ANT1 4.5 | ANT0 5 ANT1 4.5 | ANT0 5 ANT1 5 |
| 802.11n HT20 | ANT0 8 ANT1 7.5 ANT0+1 10.5 | ANT0 5 ANT1 4.5 ANT0+1 8 | ANT0 5 ANT1 4.5 ANT0+1 8.5 | ANT0 5 ANT1 5.5 ANT0+1 8.5 |
| 802.11n HT40 | N/A | ANT0 5 ANT1 4.5 ANT0+1 8.5 | ANT0 5 ANT1 4.5 ANT0+1 8.5 | ANT0 5 ANT1 5 ANT0+1 8.5 |
| 802.11ac VHT80 | N/A | ANT0 5 ANT1 4.5 ANT0+1 8.5 | ANT0 5 ANT1 4.5 ANT0+1 8 | ANT0 5 ANT1 5 ANT0+1 8.5 |

| Mode | 2.4G Bluetooth |
|--------------|----------------|
| Bluetooth DH | 11.0 |
| Bluetooth LE | 1.5 |

FCC SAR Test Report

4.6.2 Measured Conducted Power Result

The measuring conducted average power (Unit: dBm) is shown as below.

| Band Channel | WCDMA Band V | | | 3GPP MPR (dB) |
|---|--------------|-------|--------------|---------------------|
| | 4132 | 4182 | 4233 | |
| Frequency (MHz) | 826.4 | 836.4 | 846.6 | |
| EUT without Power Reduction (P-Sensor NOT Triggered) | | | | |
| RMC 12.2K | 23.57 | 23.61 | 23.78 | - |
| HSDPA Subtest-1 | 22.57 | 22.61 | 22.78 | 0 |
| HSDPA Subtest-2 | 22.56 | 22.60 | 22.77 | 0 |
| HSDPA Subtest-3 | 22.06 | 22.10 | 22.27 | 0.5 |
| HSDPA Subtest-4 | 22.08 | 22.12 | 22.29 | 0.5 |
| HSUPA Subtest-1 | 22.58 | 22.62 | 22.79 | 0 |
| HSUPA Subtest-2 | 20.54 | 20.58 | 20.75 | 2 |
| HSUPA Subtest-3 | 21.62 | 21.66 | 21.83 | 1 |
| HSUPA Subtest-4 | 20.60 | 20.64 | 20.81 | 2 |
| HSUPA Subtest-5 | 22.66 | 22.70 | 22.87 | 0 |
| EUT with Power Reduction (P-Sensor Triggered) | | | | |
| RMC 12.2K | 15.03 | 15.15 | 15.18 | - |
| HSDPA Subtest-1 | 14.03 | 14.15 | 14.18 | - |
| HSDPA Subtest-2 | 14.10 | 14.22 | 14.25 | - |
| HSDPA Subtest-3 | 13.59 | 13.71 | 13.74 | - |
| HSDPA Subtest-4 | 13.02 | 13.14 | 13.17 | - |
| HSUPA Subtest-1 | 13.10 | 13.22 | 13.25 | - |
| HSUPA Subtest-2 | 12.07 | 12.19 | 12.22 | - |
| HSUPA Subtest-3 | 13.09 | 13.21 | 13.24 | - |
| HSUPA Subtest-4 | 12.01 | 12.13 | 12.16 | - |
| HSUPA Subtest-5 | 13.86 | 13.98 | 13.98 | - |

| Band / BW | RB Size | RB Offset | QPSK | | | 3GPP MPR (dB) | 16QAM | | | 3GPP MPR (dB) |
|---|------------|--------------|-----------------|-----------------|------------------|---------------------|-----------------|-----------------|------------------|---------------------|
| | | | Low CH 20407 | Mid CH 20525 | High CH 20643 | | Low CH 20407 | Mid CH 20525 | High CH 20643 | |
| | | | 824.7 MHz | 836.5 MHz | 848.3 MHz | | 824.7 MHz | 836.5 MHz | 848.3 MHz | |
| EUT without Power Reduction (P-Sensor NOT Triggered) | | | | | | | | | | |
| 5 / 1.4M | 1 | 0 | 23.20 | 23.39 | 23.55 | 0 | 22.18 | 22.38 | 22.60 | 1 |
| | 1 | 2 | 23.18 | 23.36 | 23.52 | 0 | 22.13 | 22.35 | 22.51 | 1 |
| | 1 | 5 | 23.12 | 23.30 | 23.46 | 0 | 22.09 | 22.26 | 22.47 | 1 |
| | 3 | 0 | 22.08 | 22.28 | 22.60 | 0 | 21.02 | 21.25 | 21.58 | 1 |
| | 3 | 1 | 22.03 | 22.25 | 22.45 | 0 | 21.01 | 21.21 | 21.37 | 1 |
| | 3 | 3 | 22.18 | 22.41 | 22.56 | 0 | 21.18 | 21.35 | 21.53 | 1 |
| | 6 | 0 | 22.03 | 22.23 | 22.35 | 1 | 21.05 | 21.16 | 21.45 | 2 |
| EUT with Power Reduction (P-Sensor Triggered) | | | | | | | | | | |
| 5 / 1.4M | 1 | 0 | 15.15 | 15.37 | 15.39 | 0 | 14.12 | 14.34 | 14.36 | 1 |
| | 1 | 2 | 15.11 | 15.33 | 15.35 | 0 | 14.08 | 14.30 | 14.32 | 1 |
| | 1 | 5 | 15.09 | 15.31 | 15.33 | 0 | 14.06 | 14.28 | 14.30 | 1 |
| | 3 | 0 | 15.02 | 15.24 | 15.26 | 0 | 13.99 | 14.21 | 14.23 | 1 |
| | 3 | 1 | 15.07 | 15.29 | 15.31 | 0 | 14.04 | 14.26 | 14.28 | 1 |
| | 3 | 3 | 15.09 | 15.31 | 15.33 | 0 | 14.06 | 14.28 | 14.30 | 1 |
| | 6 | 0 | 15.06 | 15.28 | 15.30 | 0 | 14.03 | 14.25 | 14.27 | 1 |

FCC SAR Test Report

| Band / BW | RB Size | RB Offset | QPSK | | | 3GPP MPR (dB) | 16QAM | | | 3GPP MPR (dB) |
|---|---------|-----------|--------------|--------------|---------------|---------------|--------------|--------------|---------------|---------------|
| | | | Low CH 20415 | Mid CH 20525 | High CH 20635 | | Low CH 20415 | Mid CH 20525 | High CH 20635 | |
| | | | 825.5 MHz | 836.5 MHz | 847.5 MHz | | 825.5 MHz | 836.5 MHz | 847.5 MHz | |
| EUT without Power Reduction (P-Sensor NOT Triggered) | | | | | | | | | | |
| 5 / 3M | 1 | 0 | 23.29 | 23.43 | 23.60 | 0 | 22.33 | 22.47 | 22.64 | 1 |
| | 1 | 7 | 23.25 | 23.42 | 23.56 | 0 | 22.27 | 22.46 | 22.63 | 1 |
| | 1 | 14 | 23.18 | 23.34 | 23.51 | 0 | 22.21 | 22.38 | 22.56 | 1 |
| | 8 | 0 | 22.22 | 22.39 | 22.65 | 1 | 21.20 | 21.39 | 21.66 | 2 |
| | 8 | 3 | 22.18 | 22.36 | 22.51 | 1 | 21.15 | 21.37 | 21.54 | 2 |
| | 8 | 7 | 22.29 | 22.47 | 22.63 | 1 | 21.29 | 21.49 | 21.62 | 2 |
| | 15 | 0 | 22.20 | 22.34 | 22.53 | 1 | 21.19 | 21.32 | 21.47 | 2 |
| EUT with Power Reduction (P-Sensor Triggered) | | | | | | | | | | |
| 5 / 3M | 1 | 0 | 15.24 | 15.46 | 15.48 | 0 | 14.21 | 14.43 | 14.45 | 1 |
| | 1 | 7 | 15.20 | 15.42 | 15.44 | 0 | 14.17 | 14.39 | 14.41 | 1 |
| | 1 | 14 | 15.18 | 15.40 | 15.42 | 0 | 14.15 | 14.37 | 14.39 | 1 |
| | 8 | 0 | 15.11 | 15.33 | 15.35 | 0 | 14.08 | 14.31 | 14.32 | 1 |
| | 8 | 3 | 15.16 | 15.38 | 15.40 | 0 | 14.13 | 14.35 | 14.37 | 1 |
| | 8 | 7 | 15.18 | 15.40 | 14.42 | 0 | 14.15 | 14.37 | 14.39 | 1 |
| | 15 | 0 | 15.15 | 15.37 | 15.39 | 0 | 14.12 | 14.34 | 14.36 | 1 |

| Band / BW | RB Size | RB Offset | QPSK | | | 3GPP MPR (dB) | 16QAM | | | 3GPP MPR (dB) |
|---|---------|-----------|--------------|--------------|---------------|---------------|--------------|--------------|---------------|---------------|
| | | | Low CH 20425 | Mid CH 20525 | High CH 20625 | | Low CH 20425 | Mid CH 20525 | High CH 20625 | |
| | | | 826.5 MHz | 836.5 MHz | 846.5 MHz | | 826.5 MHz | 836.5 MHz | 846.5 MHz | |
| EUT without Power Reduction (P-Sensor NOT Triggered) | | | | | | | | | | |
| 5 / 5M | 1 | 0 | 23.41 | 23.50 | 23.65 | 0 | 22.39 | 22.54 | 22.70 | 1 |
| | 1 | 12 | 23.34 | 23.49 | 23.62 | 0 | 22.34 | 22.51 | 22.66 | 1 |
| | 1 | 24 | 23.28 | 23.43 | 23.57 | 0 | 22.29 | 22.45 | 22.61 | 1 |
| | 12 | 0 | 22.36 | 22.51 | 22.76 | 1 | 21.35 | 21.50 | 21.74 | 2 |
| | 12 | 6 | 22.33 | 22.49 | 22.64 | 1 | 21.29 | 21.46 | 21.60 | 2 |
| | 12 | 13 | 22.45 | 22.57 | 22.75 | 1 | 21.34 | 21.56 | 21.77 | 2 |
| | 25 | 0 | 22.34 | 22.48 | 22.60 | 1 | 21.27 | 21.44 | 21.69 | 2 |
| EUT with Power Reduction (P-Sensor Triggered) | | | | | | | | | | |
| 5 / 5M | 1 | 0 | 15.31 | 15.53 | 15.55 | 0 | 14.28 | 14.50 | 14.52 | 1 |
| | 1 | 12 | 15.27 | 15.49 | 15.51 | 0 | 14.24 | 14.46 | 14.48 | 1 |
| | 1 | 24 | 15.25 | 15.47 | 15.49 | 0 | 14.22 | 14.44 | 14.46 | 1 |
| | 12 | 0 | 15.18 | 15.47 | 15.42 | 0 | 14.15 | 14.37 | 14.39 | 1 |
| | 12 | 6 | 15.23 | 15.45 | 15.47 | 0 | 14.20 | 14.42 | 14.44 | 1 |
| | 12 | 13 | 15.25 | 15.40 | 15.49 | 0 | 14.22 | 14.44 | 14.46 | 1 |
| | 25 | 0 | 15.22 | 15.44 | 15.46 | 0 | 14.19 | 14.41 | 14.43 | 1 |

FCC SAR Test Report

| Band / BW | RB Size | RB Offset | QPSK | | | 3GPP MPR (dB) | 16QAM | | | 3GPP MPR (dB) |
|---|---------|-----------|--------------|--------------|---------------|---------------|--------------|--------------|---------------|---------------|
| | | | Low CH 20450 | Mid CH 20525 | High CH 20600 | | Low CH 20450 | Mid CH 20525 | High CH 20600 | |
| | | | 829.0 MHz | 836.5 MHz | 844.0 MHz | | 829.0 MHz | 836.5 MHz | 844.0 MHz | |
| EUT without Power Reduction (P-Sensor NOT Triggered) | | | | | | | | | | |
| 5 / 10M | 1 | 0 | 23.48 | 23.56 | 23.70 | 0 | 22.46 | 22.60 | 22.75 | 1 |
| | 1 | 24 | 23.40 | 23.55 | 23.66 | 0 | 22.45 | 22.59 | 22.72 | 1 |
| | 1 | 49 | 23.35 | 23.49 | 23.63 | 0 | 22.37 | 22.53 | 22.68 | 1 |
| | 25 | 0 | 22.55 | 22.64 | 22.83 | 1 | 21.46 | 21.63 | 21.78 | 2 |
| | 25 | 12 | 22.48 | 22.62 | 22.75 | 1 | 21.43 | 21.60 | 21.69 | 2 |
| | 25 | 25 | 22.61 | 22.70 | 22.84 | 1 | 21.56 | 21.69 | 21.82 | 2 |
| | 50 | 0 | 22.47 | 22.61 | 22.74 | 1 | 21.46 | 21.59 | 21.74 | 2 |
| EUT with Power Reduction (P-Sensor Triggered) | | | | | | | | | | |
| 5 / 10M | 1 | 0 | 15.39 | 15.61 | 15.63 | 0 | 14.36 | 14.58 | 14.60 | 1 |
| | 1 | 24 | 15.35 | 15.57 | 15.59 | 0 | 14.32 | 14.54 | 14.56 | 1 |
| | 1 | 49 | 15.33 | 15.55 | 15.57 | 0 | 14.30 | 14.52 | 14.54 | 1 |
| | 25 | 0 | 15.26 | 15.48 | 15.50 | 0 | 14.23 | 14.45 | 14.47 | 1 |
| | 25 | 12 | 15.31 | 15.53 | 15.55 | 0 | 14.28 | 14.50 | 14.52 | 1 |
| | 25 | 25 | 15.33 | 15.55 | 15.57 | 0 | 14.30 | 14.52 | 14.51 | 1 |
| | 50 | 0 | 15.30 | 15.52 | 15.54 | 0 | 14.27 | 14.49 | 14.51 | 1 |

FCC SAR Test Report

<WLAN 2.4G>

| Mode | 802.11b | | |
|-------------------------------|----------------|----------|-----------|
| Channel / Frequency (MHz) | 1 (2412) | 6 (2437) | 11 (2462) |
| Average Power (Ant-0) | 7.33 | 7.38 | 7.68 |
| Average Power (Ant-1) | 6.94 | 7.19 | 6.56 |
| Mode | 802.11n (HT20) | | |
| Channel / Frequency (MHz) | 1 (2412) | 6 (2437) | 11 (2462) |
| Average Power (Ant-0 + Ant-1) | 10.17 | 10.27 | 10.40 |

<WLAN 5.3G>

| Mode | 802.11n (HT40) | |
|-------------------------------|------------------|-----------|
| Channel / Frequency (MHz) | 54 (5270) | 62 (5310) |
| Average Power (Ant-0 + Ant-1) | 8.05 | 7.96 |
| Mode | 802.11ac (VHT80) | |
| Channel / Frequency (MHz) | 58 (5290) | |
| Average Power (Ant-0) | 4.18 | |
| Average Power (Ant-1) | 4.23 | |

<WLAN 5.6G>

| Mode | 802.11n (HT20) | | | | | |
|-------------------------------|------------------|------------|------------|------------|------------|------------|
| Channel / Frequency (MHz) | 100 (5500) | 116 (5580) | 120 (5600) | 124 (5620) | 132 (5660) | 140 (5700) |
| Average Power (Ant-1) | 5.13 | 4.51 | 4.49 | 4.61 | 4.39 | 4.21 |
| Mode | 802.11ac (VHT80) | | | | | |
| Channel / Frequency (MHz) | 106 (5530) | | | 122 (5610) | | |
| Average Power (Ant-0) | 4.08 | | | 4.11 | | |
| Average Power (Ant-0 + Ant-1) | 7.79 | | | 8.08 | | |

<Bluetooth>

| Mode | Bluetooth | | |
|---------------------------|-----------|-----------|-----------|
| Channel / Frequency (MHz) | 0 (2402) | 39 (2441) | 78 (2480) |
| Average Power | 10.28 | 10.36 | 10.66 |

| Mode | Bluetooth LE | | |
|---------------------------|--------------|-----------|-----------|
| Channel / Frequency (MHz) | 0 (2402) | 19 (2440) | 39 (2480) |
| Average Power | 0.11 | -0.59 | 1.07 |

4.7 SAR Testing Results

4.7.1 SAR Test Reduction Considerations

<KDB 447498 D01, General RF Exposure Guidance>

Testing of other required channels within the operating mode of a frequency band is not required when the reported SAR for the mid-band or highest output power channel is:

- (1) ≤ 0.8 W/kg or 2.0 W/kg, for 1-g or 10-g respectively, when the transmission band is ≤ 100 MHz
- (2) ≤ 0.6 W/kg or 1.5 W/kg, for 1-g or 10-g respectively, when the transmission band is between 100 MHz and 200 MHz
- (3) ≤ 0.4 W/kg or 1.0 W/kg, for 1-g or 10-g respectively, when the transmission band is ≥ 200 MHz

<KDB 941225 D01, 3G SAR Measurement Procedures>

The mode tested for SAR is referred to as the primary mode. The equivalent modes considered for SAR test reduction are denoted as secondary modes. Both primary and secondary modes must be in the same frequency band. When the maximum output power and tune-up tolerance specified for production units in a secondary mode is $\leq 1/4$ dB higher than the primary mode or when the highest reported SAR of the primary mode is scaled by the ratio of specified maximum output power and tune-up tolerance of secondary to primary mode and the adjusted SAR is ≤ 1.2 W/kg, SAR measurement is not required for the secondary mode.

<KDB 941225 D05, SAR Evaluation Considerations for LTE Devices>

- (1) QPSK with 1 RB and 50% RB allocation

Start with the largest channel bandwidth and measure SAR, using the RB offset and required test channel combination with the highest maximum output power among RB offsets at the upper edge, middle and lower edge of each required test channel. When the reported SAR is ≤ 0.8 W/kg, testing of the remaining RB offset configurations and required test channels is not required; otherwise, SAR is required for the remaining required test channels and only for the RB offset configuration with the highest output power for that channel. When the reported SAR of a required test channel is > 1.45 W/kg, SAR is required for all three RB offset configurations for that required test channel.

- (2) QPSK with 100% RB allocation

SAR is not required when the highest maximum output power for 100% RB allocation is less than the highest maximum output power in 50% and 1 RB allocations and the highest reported SAR for 1 RB and 50% RB allocation are ≤ 0.8 W/kg. Otherwise, SAR is measured for the highest output power channel; and if the reported SAR is > 1.45 W/kg, the remaining required test channels must also be tested.

- (3) Higher order modulations

SAR is required only when the highest maximum output power for the configuration in the higher order modulation is $> 1/2$ dB higher than the same configuration in QPSK or when the reported SAR for the QPSK configuration is > 1.45 W/kg.

- (4) Other channel bandwidth

SAR is required when the highest maximum output power of the smaller channel bandwidth is $> 1/2$ dB higher than the equivalent channel configurations in the largest channel bandwidth configuration or the reported SAR of a configuration for the largest channel bandwidth is > 1.45 W/kg.

<KDB 248227 D01, SAR Guidance for Wi-Fi Transmitters>

- (1) For handsets operating next to ear, hotspot mode or mini-tablet configurations, the initial test position procedures were applied. The test position with the highest extrapolated peak SAR will be used as the initial test position. When the reported SAR of initial test position is ≤ 0.4 W/kg, SAR testing for remaining test positions is not required. Otherwise, SAR is evaluated at the subsequent highest peak SAR positions until the reported SAR result is ≤ 0.8 W/kg or all test positions are measured.
- (2) For WLAN 2.4 GHz, the highest measured maximum output power channel for DSSS was selected for SAR measurement. When the reported SAR is ≤ 0.8 W/kg, no further SAR testing is required. Otherwise, SAR is evaluated at the next highest measured output power channel. When any reported SAR is > 1.2 W/kg, SAR is required for the third channel. For OFDM modes (802.11g/n), SAR is not required when the highest reported SAR for DSSS is adjusted by the ratio of OFDM to DSSS specified maximum output power and it is ≤ 1.2 W/kg.
- (3) For WLAN 5 GHz, the initial test configuration was selected according to the transmission mode with the highest maximum output power. When the reported SAR of initial test configuration is > 0.8 W/kg, SAR is required for the subsequent highest measured output power channel until the reported SAR result is ≤ 1.2 W/kg or all required channels are measured. For other transmission modes, SAR is not required when the highest reported SAR for initial test configuration is adjusted by the ratio of subsequent test configuration to initial test configuration specified maximum output power and it is ≤ 1.2 W/kg.
- (4) For WLAN MIMO mode, the power-based standalone SAR test exclusion or the sum of SAR provision in KDB 447498 to determine simultaneous transmission SAR test exclusion should be applied. Otherwise, SAR for MIMO mode will be measured with all applicable antennas transmitting simultaneously at the specified maximum output power of MIMO operation.

FCC SAR Test Report

4.7.2 SAR Results for Body Exposure Condition

| Plot No. | Band | Mode | Test Position | Separation Distance (mm) | Ch. | Power Reduction | Max. Tune-up Power (dBm) | Measured Conducted Power (dBm) | Scaling Factor | Power Drift (dB) | Measured SAR-1g (W/kg) | Scaled SAR-1g (W/kg) |
|----------|---------|----------|---------------|--------------------------|------|-----------------|--------------------------|--------------------------------|----------------|------------------|------------------------|----------------------|
| | WCDMA V | RMC12.2K | Rear Face | 1.2 | 4233 | w/o | 24.0 | 23.78 | 1.05 | 0.11 | 0.724 | 0.76 |
| | WCDMA V | RMC12.2K | Top Side | 1 | 4233 | w/o | 24.0 | 23.78 | 1.05 | 0.12 | 0.314 | 0.33 |
| | WCDMA V | RMC12.2K | Right Side | 0 | 4233 | w/o | 24.0 | 23.78 | 1.05 | -0.03 | 0.242 | 0.25 |
| | WCDMA V | RMC12.2K | Rear Face | 0 | 4233 | w/ | 16.0 | 15.18 | 1.21 | -0.15 | 0.701 | 0.85 |
| | WCDMA V | RMC12.2K | Top Side | 0 | 4233 | w/ | 16.0 | 15.18 | 1.21 | -0.15 | 0.331 | 0.40 |
| 01 | WCDMA V | RMC12.2K | Rear Face | 0 | 4132 | w/ | 16.0 | 15.03 | 1.25 | -0.16 | 0.699 | 0.87 |
| | WCDMA V | RMC12.2K | Rear Face | 0 | 4182 | w/ | 16.0 | 15.15 | 1.22 | -0.13 | 0.693 | 0.84 |

| Plot No. | Band | Mode | Test Position | Separation Distance (mm) | Ch. | RB# | RB Offset | Power Reduction | Max. Tune-up Power (dBm) | Measured Conducted Power (dBm) | Scaling Factor | Power Drift (dB) | Measured SAR-1g (W/kg) | Scaled SAR-1g (W/kg) |
|----------|-------|---------|---------------|--------------------------|-------|-----|-----------|-----------------|--------------------------|--------------------------------|----------------|------------------|------------------------|----------------------|
| | LTE 5 | QPSK10M | Rear Face | 1.2 | 20600 | 1 | 0 | w/o | 24.0 | 23.70 | 1.07 | 0.04 | 0.758 | 0.81 |
| | LTE 5 | QPSK10M | Top Side | 1 | 20600 | 1 | 0 | w/o | 24.0 | 23.70 | 1.07 | -0.1 | 0.356 | 0.38 |
| | LTE 5 | QPSK10M | Right Side | 0 | 20600 | 1 | 0 | w/o | 24.0 | 23.70 | 1.07 | -0.15 | 0.225 | 0.24 |
| | LTE 5 | QPSK10M | Rear Face | 1.2 | 20600 | 25 | 25 | w/o | 23.0 | 22.84 | 1.04 | 0.05 | 0.63 | 0.65 |
| | LTE 5 | QPSK10M | Top Side | 1 | 20600 | 25 | 25 | w/o | 23.0 | 22.84 | 1.04 | -0.1 | 0.294 | 0.31 |
| | LTE 5 | QPSK10M | Right Side | 0 | 20600 | 25 | 25 | w/o | 23.0 | 22.84 | 1.04 | -0.02 | 0.188 | 0.20 |
| | LTE 5 | QPSK10M | Rear Face | 0 | 20600 | 1 | 0 | w/ | 16.0 | 15.63 | 1.09 | -0.07 | 0.687 | 0.75 |
| | LTE 5 | QPSK10M | Top Side | 0 | 20600 | 1 | 0 | w/ | 16.0 | 15.63 | 1.09 | 0.05 | 0.317 | 0.35 |
| | LTE 5 | QPSK10M | Rear Face | 0 | 20600 | 25 | 25 | w/ | 16.0 | 15.57 | 1.10 | -0.15 | 0.692 | 0.76 |
| | LTE 5 | QPSK10M | Top Side | 0 | 20600 | 25 | 25 | w/ | 16.0 | 15.57 | 1.10 | 0.04 | 0.311 | 0.34 |
| | LTE 5 | QPSK10M | Rear Face | 1.2 | 20600 | 50 | 0 | w/o | 23.0 | 22.74 | 1.06 | 0.12 | 0.709 | 0.75 |
| | LTE 5 | QPSK10M | Rear Face | 1.2 | 20450 | 1 | 0 | w/o | 24.0 | 23.48 | 1.13 | 0.08 | 0.714 | 0.80 |
| 02 | LTE 5 | QPSK10M | Rear Face | 1.2 | 20525 | 1 | 0 | w/o | 24.0 | 23.56 | 1.11 | 0.07 | 0.762 | 0.84 |

| Plot No. | Band | Mode | Test Position | Separation Distance (mm) | Ch. | Tx Antenna | Max. Tune-up Power (dBm) | Measured Conducted Power (dBm) | Scaling Factor | Power Drift (dB) | Measured SAR-1g (W/kg) | Scaled SAR-1g (W/kg) |
|----------|-----------|--------------|---------------|--------------------------|-----|------------|--------------------------|--------------------------------|----------------|------------------|------------------------|----------------------|
| | 2.4G WLAN | 802.11b | Rear Face | 0 | 11 | 0 | 8.0 | 7.68 | 1.08 | -0.03 | 0.249 | 0.27 |
| | 2.4G WLAN | 802.11b | Top Side | 0 | 11 | 0 | 8.0 | 7.68 | 1.08 | -0.12 | 0.115 | 0.12 |
| | 2.4G WLAN | 802.11b | Rear Face | 0 | 6 | 1 | 7.5 | 7.19 | 1.07 | -0.08 | 0.25 | 0.27 |
| | 2.4G WLAN | 802.11b | Top Side | 0 | 6 | 1 | 7.5 | 7.19 | 1.07 | -0.12 | 0.025 | 0.03 |
| 03 | 2.4G WLAN | 802.11n HT20 | Rear Face | 0 | 11 | 0+1 | 10.5 | 10.40 | 1.02 | -0.02 | 0.295 | 0.30 |
| | 2.4G WLAN | 802.11n HT20 | Top Side | 0 | 11 | 0+1 | 10.5 | 10.40 | 1.02 | -0.08 | 0.078 | 0.08 |

| Plot No. | Band | Mode | Test Position | Separation Distance (mm) | Ch. | Tx Antenna | Max. Tune-up Power (dBm) | Measured Conducted Power (dBm) | Scaling Factor | Power Drift (dB) | Measured SAR-1g (W/kg) | Scaled SAR-1g (W/kg) |
|----------|-----------|---------------|---------------|--------------------------|-----|------------|--------------------------|--------------------------------|----------------|------------------|------------------------|----------------------|
| | 5.3G WLAN | 802.11ac VH80 | Rear Face | 0 | 58 | 0 | 5.0 | 4.18 | 1.21 | -0.03 | 0.263 | 0.32 |
| | 5.3G WLAN | 802.11ac VH80 | Top Side | 0 | 58 | 0 | 5.0 | 4.18 | 1.21 | 0.16 | 0.26 | 0.31 |
| | 5.3G WLAN | 802.11ac VH80 | Rear Face | 0 | 58 | 1 | 4.5 | 4.23 | 1.06 | -0.09 | 0.749 | 0.80 |
| | 5.3G WLAN | 802.11ac VH80 | Top Side | 0 | 58 | 1 | 4.5 | 4.23 | 1.06 | 0.16 | 0.222 | 0.24 |
| 04 | 5.3G WLAN | 802.11n HT40 | Rear Face | 0 | 54 | 0+1 | 8.5 | 8.05 | 1.11 | -0.03 | 0.754 | 0.84 |
| | 5.3G WLAN | 802.11n HT40 | Top Side | 0 | 54 | 0+1 | 8.5 | 8.05 | 1.11 | -0.11 | 0.279 | 0.31 |
| | 5.3G WLAN | 802.11n HT40 | Rear Face | 0 | 62 | 0+1 | 8.5 | 7.96 | 1.13 | -0.17 | 0.726 | 0.82 |
| | 5.6G WLAN | 802.11ac VH80 | Rear Face | 0 | 122 | 0 | 5.0 | 4.11 | 1.23 | -0.1 | 0.389 | 0.48 |
| | 5.6G WLAN | 802.11ac VH80 | Top Side | 0 | 122 | 0 | 5.0 | 4.11 | 1.23 | -0.15 | 0.313 | 0.38 |
| 05 | 5.6G WLAN | 802.11n HT20 | Rear Face | 0 | 100 | 1 | 5.5 | 5.13 | 1.09 | -0.11 | 0.726 | 0.79 |
| | 5.6G WLAN | 802.11n HT20 | Top Side | 0 | 100 | 1 | 5.5 | 5.13 | 1.09 | -0.17 | 0.217 | 0.24 |
| | 5.6G WLAN | 802.11ac VH80 | Rear Face | 0 | 122 | 0+1 | 8.5 | 8.08 | 1.10 | -0.13 | 0.506 | 0.56 |
| | 5.6G WLAN | 802.11ac VH80 | Top Side | 0 | 122 | 0+1 | 8.5 | 8.08 | 1.10 | -0.13 | 0.319 | 0.35 |

| Plot No. | Band | Test Position | Separation Distance (mm) | Ch. | Max. Tune-up Power (dBm) | Measured Conducted Power (dBm) | Scaling Factor | Power Drift (dB) | Measured SAR-1g (W/kg) | Scaled SAR-1g (W/kg) |
|----------|-----------|---------------|--------------------------|-----|--------------------------|--------------------------------|----------------|------------------|------------------------|----------------------|
| 06 | Bluetooth | Rear Face | 0 | 78 | 11.0 | 10.66 | 1.08 | -0.15 | 0.307 | 0.33 |
| | Bluetooth | Top Side | 0 | 78 | 11.0 | 10.66 | 1.08 | -0.11 | 0.109 | 0.12 |

4.7.3 SAR Measurement Variability

According to KDB 865664 D01, SAR measurement variability was assessed for each frequency band, which is determined by the SAR probe calibration point and tissue-equivalent medium used for the device measurements. When both head and body tissue-equivalent media are required for SAR measurements in a frequency band, the variability measurement procedures should be applied to the tissue medium with the highest measured SAR, using the highest measured SAR configuration for that tissue-equivalent medium. Alternatively, if the highest measured SAR for both head and body tissue-equivalent media are ≤ 1.45 W/kg and the ratio of these highest SAR values, i.e., largest divided by smallest value, is ≤ 1.10 , the highest SAR configuration for either head or body tissue-equivalent medium may be used to perform the repeated measurement. These additional measurements are repeated after the completion of all measurements requiring the same head or body tissue-equivalent medium in a frequency band. The test device should be returned to ambient conditions (normal room temperature) with the battery fully charged before it is re-mounted on the device holder for the repeated measurement(s) to minimize any unexpected variations in the repeated results.

Since all the measured SAR are less than 0.8 W/kg, the repeated measurement is not required.

FCC SAR Test Report

4.7.4 Simultaneous Multi-band Transmission Evaluation

<Possibilities of Simultaneous Transmission>

The simultaneous transmission possibilities for this device are listed as below.

| Simultaneous TX Combination | Capable Transmit Configurations | Body Exposure Condition |
|-----------------------------|---|-------------------------|
| 1 | WWAN + WLAN 2.4G | Yes |
| 2 | WWAN + WLAN 5G | Yes |
| 3 | WWAN + BT | Yes |
| 4 | WLAN 2.4G_Main Ant.(SISO) + WLAN 5G_Aux Ant.(SISO) | Yes |
| 5 | WWAN + WLAN 2.4G_Main Ant.(SISO) + WLAN 5G_Aux Ant.(SISO) | Yes |

Note:

1. The WLAN and Bluetooth cannot transmit simultaneously.

<Estimated SAR Calculation>

According to KDB 447498 D01, when standalone SAR test exclusion applies to an antenna that transmits simultaneously with other antennas, the standalone SAR was estimated according to following formula to result in substantially conservative SAR values of ≤ 0.4 W/kg to determine simultaneous transmission SAR test exclusion.

$$\text{Estimated SAR} = \frac{\text{Max. Tune up Power}_{(mW)}}{\text{Min. Test Separation Distance}_{(mm)}} \times \frac{\sqrt{f_{(GHz)}}}{7.5}$$

If the minimum test separation distance is < 5 mm, a distance of 5 mm is used for estimated SAR calculation. When the test separation distance is > 50 mm, the 0.4 W/kg is used for SAR-1g.

| Mode / Band | Frequency (GHz) | Max. Tune-up Power (dBm) | Test Position | Separation Distance (mm) | Estimated SAR (W/kg) |
|-----------------|-----------------|--------------------------|---------------|--------------------------|----------------------|
| WCDMA V | 0.846 | 24.0 | Body | 0 | 0.40 |
| LTE 5 | 0.848 | 24.0 | Body | 0 | 0.40 |
| WLAN (DTS) SISO | 2.462 | 8.0 | Body | 0 | 0.26 |
| WLAN (NII) SISO | 5.3 | 5.0 | Body | 0 | 0.19 |
| WLAN (NII) SISO | 5.6 | 5.5 | Body | 0 | 0.22 |
| WLAN (DTS) MIMO | 2.462 | 10.5 | Body | 0 | 0.40 |
| WLAN (NII) MIMO | 5.3 | 8.5 | Body | 0 | 0.40 |
| WLAN (NII) MIMO | 5.6 | 8.5 | Body | 0 | 0.40 |
| BT (DSS) | 2.48 | 11.0 | Body | 0 | 0.40 |

Note:

1. The separation distance is determined from the outer housing of the EUT to the user.
2. When standalone SAR testing is not required, an estimated SAR can be applied to determine simultaneous transmission SAR test exclusion.

FCC SAR Test Report

<SAR Summation Analysis>

Simultaneous transmission SAR test exclusion is determined for each operating configuration and exposure condition according to the reported standalone SAR of each applicable simultaneous transmitting antenna. When the sum of SAR_{1g} of all simultaneously transmitting antennas in an operating mode and exposure condition combination is within the SAR limit (SAR_{1g} 1.6 W/kg), the simultaneous transmission SAR is not required. When the sum of SAR_{1g} is greater than the SAR limit (SAR_{1g} 1.6 W/kg), SAR test exclusion is determined by the SPLSR.

| No. | Conditions (SAR1 + SAR2) | Exposure Condition | Test Position | Max. SAR1 | Max. SAR2 | SAR Summation | SPLSR Analysis |
|-----|--------------------------|--------------------|---------------|-----------|-----------|---------------|---------------------------|
| 1 | WCDMA V + WLAN (DTS) | Body | Rear Face | 0.87 | 0.30 | 1.17 | Σ SAR < 1.6, Not required |
| | | | Left Side | 0.40 | 0.40 | 0.80 | Σ SAR < 1.6, Not required |
| | | | Right Side | 0.25 | 0.40 | 0.65 | Σ SAR < 1.6, Not required |
| | | | Top Side | 0.40 | 0.12 | 0.52 | Σ SAR < 1.6, Not required |
| | | | Bottom Side | 0.40 | 0.40 | 0.80 | Σ SAR < 1.6, Not required |
| 2 | WCDMA V + WLAN (NII) | Body | Rear Face | 0.87 | 0.84 | 1.71 | Analyzed as below |
| | | | Left Side | 0.40 | 0.40 | 0.80 | Σ SAR < 1.6, Not required |
| | | | Right Side | 0.25 | 0.40 | 0.65 | Σ SAR < 1.6, Not required |
| | | | Top Side | 0.40 | 0.38 | 0.78 | Σ SAR < 1.6, Not required |
| | | | Bottom Side | 0.40 | 0.40 | 0.80 | Σ SAR < 1.6, Not required |
| 3 | WCDMA V + BT (DSS) | Body | Rear Face | 0.87 | 0.33 | 1.20 | Σ SAR < 1.6, Not required |
| | | | Left Side | 0.40 | 0.40 | 0.80 | Σ SAR < 1.6, Not required |
| | | | Right Side | 0.25 | 0.40 | 0.65 | Σ SAR < 1.6, Not required |
| | | | Top Side | 0.40 | 0.12 | 0.52 | Σ SAR < 1.6, Not required |
| | | | Bottom Side | 0.40 | 0.40 | 0.80 | Σ SAR < 1.6, Not required |

FCC SAR Test Report

| No. | Conditions (SAR1 + SAR2) | Exposure Condition | Test Position | Max. SAR1 | Max. SAR2 | SAR Summation | SPLSR Analysis |
|-----|--------------------------|--------------------|---------------|-----------|-----------|---------------|----------------------------------|
| 4 | LTE 5 + WLAN (DTS) | Body | Rear Face | 0.84 | 0.30 | 1.14 | Σ SAR < 1.6, Not required |
| | | | Left Side | 0.40 | 0.40 | 0.80 | Σ SAR < 1.6, Not required |
| | | | Right Side | 0.24 | 0.40 | 0.64 | Σ SAR < 1.6, Not required |
| | | | Top Side | 0.38 | 0.12 | 0.50 | Σ SAR < 1.6, Not required |
| | | | Bottom Side | 0.40 | 0.40 | 0.80 | Σ SAR < 1.6, Not required |
| 5 | LTE 5 + WLAN (NII) | Body | Rear Face | 0.84 | 0.84 | 1.68 | Analyzed as below |
| | | | Left Side | 0.40 | 0.40 | 0.80 | Σ SAR < 1.6, Not required |
| | | | Right Side | 0.24 | 0.40 | 0.64 | Σ SAR < 1.6, Not required |
| | | | Top Side | 0.38 | 0.38 | 0.76 | Σ SAR < 1.6, Not required |
| | | | Bottom Side | 0.40 | 0.40 | 0.80 | Σ SAR < 1.6, Not required |
| 6 | LTE 5 + BT (DSS) | Body | Rear Face | 0.84 | 0.33 | 1.17 | Σ SAR < 1.6, Not required |
| | | | Left Side | 0.40 | 0.40 | 0.80 | Σ SAR < 1.6, Not required |
| | | | Right Side | 0.24 | 0.40 | 0.64 | Σ SAR < 1.6, Not required |
| | | | Top Side | 0.38 | 0.12 | 0.50 | Σ SAR < 1.6, Not required |
| | | | Bottom Side | 0.40 | 0.40 | 0.80 | Σ SAR < 1.6, Not required |

| No. | Conditions (SAR1 + SAR2) | Exposure Condition | Test Position | Max. SAR1 | Max. SAR2 | SAR Summation | SPLSR Analysis |
|-----|--|--------------------|---------------|-----------|-----------|---------------|----------------------------------|
| 7 | WLAN (DTS) Main Ant.(SISO) + WLAN (NII) Aux Ant.(SISO) | Body | Rear Face | 0.27 | 0.80 | 1.07 | Σ SAR < 1.6, Not required |
| | | | Left Side | 0.26 | 0.22 | 0.48 | Σ SAR < 1.6, Not required |
| | | | Right Side | 0.26 | 0.22 | 0.48 | Σ SAR < 1.6, Not required |
| | | | Top Side | 0.12 | 0.24 | 0.36 | Σ SAR < 1.6, Not required |
| | | | Bottom Side | 0.26 | 0.22 | 0.48 | Σ SAR < 1.6, Not required |

FCC SAR Test Report

| No. | Conditions (SAR1 + SAR2) | Exposure Condition | Test Position | Max. SAR1 | Max. SAR2 | Max. SAR3 | SAR Summation | SPLSR Analysis |
|-----|---|--------------------|---------------|-----------|-----------|-----------|---------------|---------------------------|
| 8 | WCDMA V + WLAN (DTS) + WLAN (NII) | Body | Rear Face | 0.87 | 0.27 | 0.80 | 1.94 | Analyzed as below |
| | | | Left Side | 0.40 | 0.26 | 0.22 | 0.88 | Σ SAR < 1.6, Not required |
| | | | Right Side | 0.25 | 0.26 | 0.22 | 0.73 | Σ SAR < 1.6, Not required |
| | | | Top Side | 0.40 | 0.12 | 0.24 | 0.76 | Σ SAR < 1.6, Not required |
| | | | Bottom Side | 0.40 | 0.26 | 0.22 | 0.88 | Σ SAR < 1.6, Not required |

| No. | Conditions (SAR1 + SAR2) | Exposure Condition | Test Position | Max. SAR1 | Max. SAR2 | Max. SAR3 | SAR Summation | SPLSR Analysis |
|-----|---|--------------------|---------------|-----------|-----------|-----------|---------------|---------------------------|
| 9 | LTE 5 + WLAN (DTS) + WLAN (NII) | Body | Rear Face | 0.84 | 0.27 | 0.80 | 1.91 | Analyzed as below |
| | | | Left Side | 0.40 | 0.26 | 0.22 | 0.88 | Σ SAR < 1.6, Not required |
| | | | Right Side | 0.24 | 0.26 | 0.22 | 0.72 | Σ SAR < 1.6, Not required |
| | | | Top Side | 0.38 | 0.12 | 0.24 | 0.74 | Σ SAR < 1.6, Not required |
| | | | Bottom Side | 0.40 | 0.26 | 0.22 | 0.88 | Σ SAR < 1.6, Not required |

<SAR to Peak Location Separation Ratio Analysis>

The simultaneous transmitting antennas in each operating mode and exposure condition combination are considered one pair at a time to determine the SPLSR. When SAR is measured for both antennas in the pair, the peak location separation distance is computed by the following formula.

$$\text{Peak Location Separation Distance} = \sqrt{(x_1 - x_2)^2 + (y_1 - y_2)^2 + (z_1 - z_2)^2}$$

Where (x_1, y_1, z_1) and (x_2, y_2, z_2) are the coordinates of the extrapolated peak SAR locations in the area or zoom scans.

When standalone test exclusion applies, SAR is estimated; the peak location is assumed to be at the feed-point or geometric center of the antenna. Due to curvatures on the SAM phantom, when SAR is estimated for one of the antennas in an antenna pair, the measured peak SAR location will be translated onto the test device to determine the peak location separation for the antenna pair.

The SPLSR is determined by the following formula.

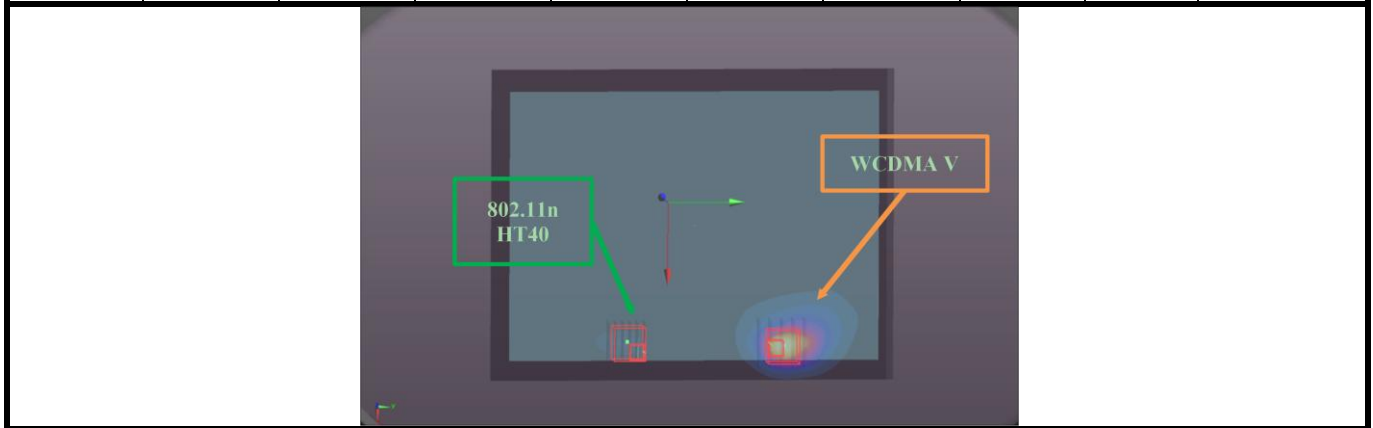
$$\text{SPLSR} = \frac{(SAR_1 + SAR_2)^{1.5}}{R_i}$$

Where SAR_1 and SAR_2 are the highest reported or estimated SAR for each antenna in the pair, and R_i is the separation distance between the peak SAR locations for the antenna pair in mm.

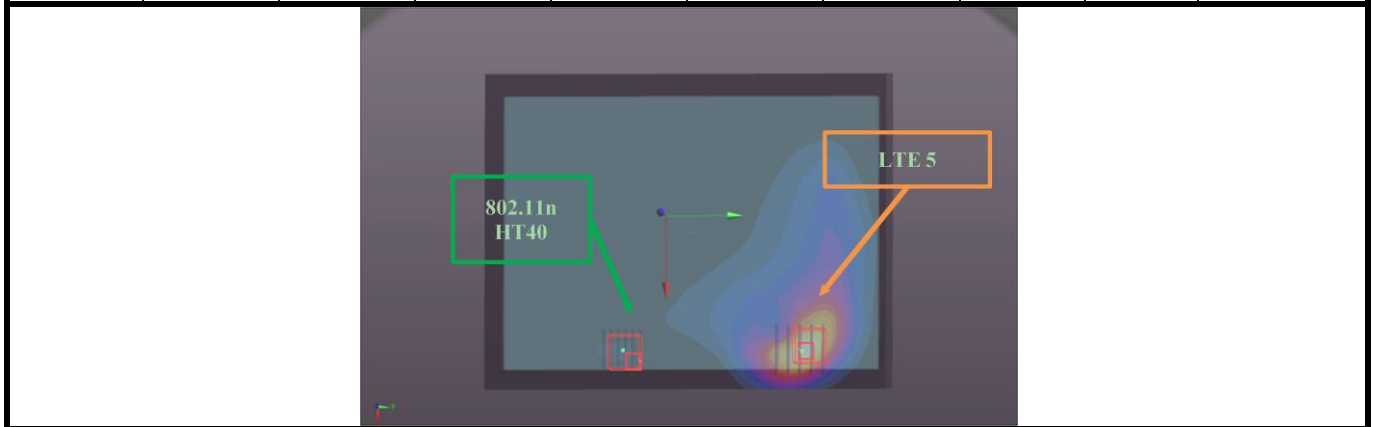
When the SPLSR is ≤ 0.04 , the simultaneous transmission SAR is not required. Otherwise, the enlarged zoom scan and volume scan post-processing procedures will be performed.

FCC SAR Test Report

| Conditions | Exposure Condition | Test Position | SAR Value (W/kg) | Coordinates | | | Peak Location Separation Distance (R _i , mm) | SPLSR | Simultaneous Transmission SAR Test |
|-------------------|--------------------|---------------|------------------|-------------|-------|------|---|-------|------------------------------------|
| | | | | x | y | z | | | |
| WCDMA V Ch4132 | Body | Rear Face | 0.87 | 79.6 | 57.6 | 2.47 | 92.2 | 0.02 | SPLSR ≤ 0.04, Not required |
| 802.11n Ch54 | | | 0.84 | 83.5 | -34.5 | 2.59 | | | |

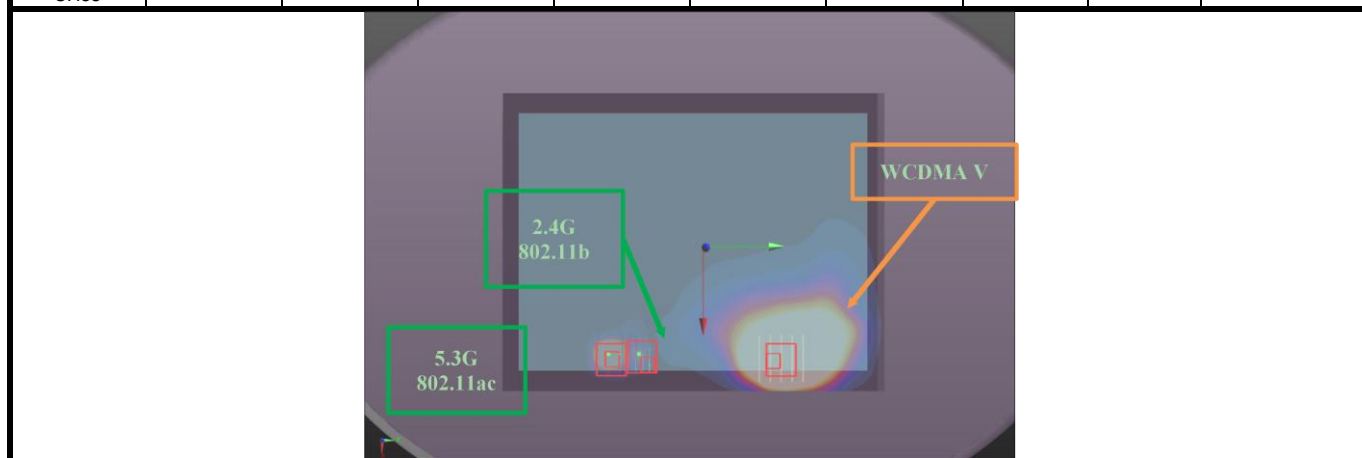


| Conditions | Exposure Condition | Test Position | SAR Value (W/kg) | Coordinates | | | Peak Location Separation Distance (R _i , mm) | SPLSR | Simultaneous Transmission SAR Test |
|------------------|--------------------|---------------|------------------|-------------|-------|------|---|-------|------------------------------------|
| | | | | x | y | z | | | |
| LTE 5 Ch20525 | Body | Rear Face | 0.84 | 76 | 79.6 | 1.52 | 114.4 | 0.02 | SPLSR ≤ 0.04, Not required |
| 802.11n Ch54 | | | 0.84 | 83.5 | -34.5 | 2.59 | | | |



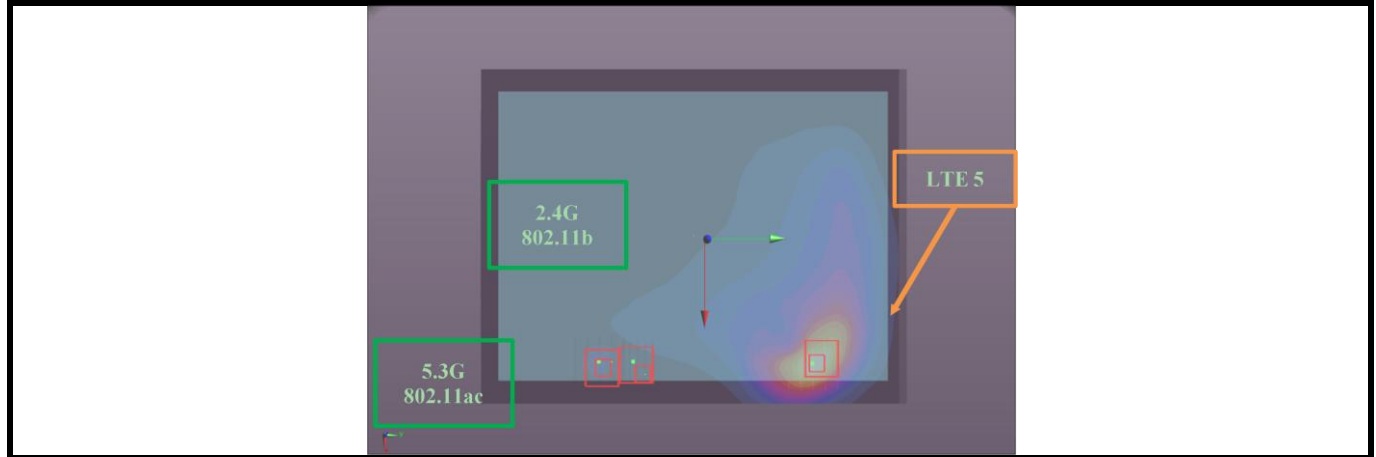
FCC SAR Test Report

| Conditions | Exposure Condition | Test Position | SAR Value (W/kg) | Coordinates | | | Peak Location Separation Distance (R _i , mm) | SPLSR | Simultaneous Transmission SAR Test |
|----------------|--------------------|---------------|------------------|-------------|-------|------|---|-------|------------------------------------|
| | | | | x | y | z | | | |
| WCDMA V Ch4132 | Body | Rear Face | 0.87 | 79.6 | 57.6 | 2.47 | 116.9 | 0.01 | SPLSR ≤ 0.04, Not required |
| 802.11b Ch11 | | | 0.27 | 78.2 | -59.3 | 2.27 | | | |
| WCDMA V Ch4132 | | | 0.87 | 79.6 | 57.6 | 2.47 | 92.2 | 0.02 | |
| 802.11ac CH58 | | | 0.8 | 83.5 | -34.5 | 2.57 | | | |
| 802.11b Ch11 | | | 0.27 | 78.2 | -59.3 | 2.27 | 25.4 | 0.04 | |
| 802.11ac CH58 | | | 0.8 | 83.5 | -34.5 | 2.57 | | | |



FCC SAR Test Report

| Conditions | Exposure Condition | Test Position | SAR Value (W/kg) | Coordinates | | | Peak Location Separation Distance (R _i , mm) | SPLSR | Simultaneous Transmission SAR Test |
|------------------|--------------------|---------------|------------------|-------------|-------|------|---|-------|------------------------------------|
| | | | | x | y | z | | | |
| LTE 5 Ch20525 | Body | Rear Face | 0.84 | 76 | 79.6 | 1.52 | 138.9 | 0.01 | SPLSR ≤ 0.04, Not required |
| 802.11b Ch11 | | | 0.27 | 78.2 | -59.3 | 2.27 | | | |
| LTE 5 Ch20525 | | | 0.84 | 76 | 79.6 | 1.52 | 114.4 | 0.02 | |
| 802.11ac CH58 | | | 0.8 | 83.5 | -34.5 | 2.57 | | | |
| 802.11b Ch11 | | | 0.27 | 78.2 | -59.3 | 2.27 | 25.4 | 0.04 | |
| 802.11ac CH58 | | | 0.8 | 83.5 | -34.5 | 2.57 | | | |



Test Engineer : Mars Chang, and Chiajui Fu

5. Calibration of Test Equipment

| Equipment | Manufacturer | Model | SN | Cal. Date | Cal. Interval |
|------------------------------|---------------|----------------|------------|---------------|---------------|
| System Validation Dipole | SPEAG | D835V2 | 4d092 | Jun. 28, 2017 | 1 Year |
| System Validation Dipole | SPEAG | D2450V2 | 869 | Jun. 27, 2017 | 1 Year |
| System Validation Dipole | SPEAG | D5GHzV2 | 1203 | Dec. 16, 2016 | 1 Year |
| Dosimetric E-Field Probe | SPEAG | ET3DV6 | 1790 | May. 24, 2017 | 1 Year |
| Dosimetric E-Field Probe | SPEAG | EX3DV4 | 7351 | Dec. 20, 2016 | 1 Year |
| Data Acquisition Electronics | SPEAG | DAE4 | 861 | May. 22, 2017 | 1 Year |
| Data Acquisition Electronics | SPEAG | DAE4 | 917 | Jan. 06, 2017 | 1 Year |
| Radio Communication Analyzer | Anritsu | MT8820C | 6201381727 | May. 26, 2017 | 1 Year |
| Spectrum Analyzer | R&S | FSL6 | 102006 | Mar. 27, 2017 | 1 Year |
| ENA Series Network Analyzer | Agilent | E5071C | MY46214281 | Jun. 09, 2017 | 1 Year |
| MXG Analog Signal Generator | Agilent | N5181A | MY50143868 | Jul. 10, 2017 | 1 Year |
| Vector Signal Generator | Anritsu | MG3710A | 6201599977 | Mar. 27, 2017 | 1 Year |
| Power Meter | Anritsu | ML2495A | 1218009 | Jul. 12, 2017 | 1 Year |
| Power Sensor | Anritsu | MA2411B | 1207252 | Jul. 12, 2017 | 1 Year |
| Thermometer | YFE | YF-160A | 130504591 | Mar. 24, 2017 | 1 Year |
| Power Amplifier | AR | 5S1G4 | 0339656 | Sep. 21, 2016 | 1 Year |
| Power Amplifier | mini-circuits | ZVE-8G | 05770420A | Sep. 21, 2016 | 1 Year |
| Attenuator | MTJ | MTJ6011-03 | N/A | Sep. 21, 2016 | 1 Year |
| Attenuator | Woken | 00800A1G01L-10 | N/A | Sep. 21, 2016 | 1 Year |
| Directional Coupler | Woken | 0110A05602O-10 | 11122702 | Sep. 21, 2016 | 1 Year |
| Thermometer | YFE | YF-160A | 120702365 | Aug. 15, 2017 | 1 Year |
| Thermometer | YFE | YF-160A | 120702369 | Aug. 15, 2017 | 1 Year |
| ELI Phantom | SPEAG | QD OVA 002 AA | 1204 | N/A | N/A |

6. Measurement Uncertainty

| Source of Uncertainty | Uncertainty (± %) | Probability Distribution | Divisor | Ci (1g) | Ci (10g) | Standard Uncertainty (± %, 1g) | Standard Uncertainty (± %, 10g) | Vi |
|--|-------------------|--------------------------|---------|---------|----------|--------------------------------|---------------------------------|----|
| Measurement System | | | | | | | | |
| Probe Calibration | 6.0 | Normal | 1 | 1 | 1 | 6.0 | 6.0 | ∞ |
| Axial Isotropy | 4.7 | Rectangular | √3 | √0.5 | √0.5 | 1.9 | 1.9 | ∞ |
| Hemispherical Isotropy | 9.6 | Rectangular | √3 | √0.5 | √0.5 | 3.9 | 3.9 | ∞ |
| Boundary Effect | 1.0 | Rectangular | √3 | 1 | 1 | 0.6 | 0.6 | ∞ |
| Linearity | 4.7 | Rectangular | √3 | 1 | 1 | 2.7 | 2.7 | ∞ |
| Detection Limits | 0.25 | Rectangular | √3 | 1 | 1 | 0.14 | 0.14 | ∞ |
| Probe Modulation Response | 3.5 | Rectangular | √3 | 1 | 1 | 2.0 | 2.0 | ∞ |
| Readout Electronics | 0.3 | Normal | 1 | 1 | 1 | 0.3 | 0.3 | ∞ |
| Response Time | 0.0 | Rectangular | √3 | 1 | 1 | 0.0 | 0.0 | ∞ |
| Integration Time | 1.7 | Rectangular | √3 | 1 | 1 | 1.0 | 1.0 | ∞ |
| RF Ambient Conditions – Noise | 3.0 | Rectangular | √3 | 1 | 1 | 1.7 | 1.7 | ∞ |
| RF Ambient Conditions – Reflections | 3.0 | Rectangular | √3 | 1 | 1 | 1.7 | 1.7 | ∞ |
| Probe Positioner Mechanical Tolerance | 0.4 | Rectangular | √3 | 1 | 1 | 0.2 | 0.2 | ∞ |
| Probe Positioning with Respect to Phantom | 2.9 | Rectangular | √3 | 1 | 1 | 1.7 | 1.7 | ∞ |
| Post-processing | 2.0 | Rectangular | √3 | 1 | 1 | 1.2 | 1.2 | ∞ |
| Test Sample Related | | | | | | | | |
| Test Sample Positioning | 4.38 / 1.35 | Normal | 1 | 1 | 1 | 4.4 | 1.4 | 29 |
| Device Holder Uncertainty | 2.9 / 4.1 | Normal | 1 | 1 | 1 | 2.9 | 4.1 | 11 |
| Power Drift of Measurement | 5.0 | Rectangular | √3 | 1 | 1 | 2.9 | 2.9 | ∞ |
| Power Scaling | 0.0 | Rectangular | √3 | 1 | 1 | 0.0 | 0.0 | ∞ |
| Phantom and Setup | | | | | | | | |
| Phantom Uncertainty (Shape and Thickness Tolerances) | 7.2 | Rectangular | √3 | 1 | 1 | 4.2 | 4.2 | ∞ |
| Liquid Conductivity (Temperature Uncertainty) | 3.24 | Rectangular | √3 | 0.78 | 0.71 | 1.5 | 1.3 | ∞ |
| Liquid Conductivity (Measured) | 2.88 | Normal | 1 | 0.78 | 0.71 | 2.2 | 2.0 | 43 |
| Liquid Permittivity (Temperature Uncertainty) | 1.13 | Rectangular | √3 | 0.23 | 0.26 | 0.2 | 0.2 | ∞ |
| Liquid Permittivity (Measured) | 2.50 | Normal | 1 | 0.23 | 0.26 | 0.6 | 0.7 | 54 |
| Combined Standard Uncertainty | | | | | | ± 11.8 % | ± 11.3 % | |
| Expanded Uncertainty (K=2) | | | | | | ± 23.6 % | ± 22.6 % | |

Body SAR Uncertainty Budget for Frequency Range of 300 MHz to 3 GHz

FCC SAR Test Report

| Source of Uncertainty | Uncertainty (± %) | Probability Distribution | Divisor | C _i (1g) | C _i (10g) | Standard Uncertainty (± %, 1g) | Standard Uncertainty (± %, 10g) | V _i |
|--|----------------------|-----------------------------|---------|------------------------|-------------------------|--------------------------------------|---------------------------------------|----------------|
| Measurement System | | | | | | | | |
| Probe Calibration | 6.55 | Normal | 1 | 1 | 1 | 6.55 | 6.55 | ∞ |
| Axial Isotropy | 4.7 | Rectangular | √3 | 0.7 | 0.7 | 1.9 | 1.9 | ∞ |
| Hemispherical Isotropy | 9.6 | Rectangular | √3 | 0.7 | 0.7 | 3.9 | 3.9 | ∞ |
| Boundary Effect | 2.0 | Rectangular | √3 | 1 | 1 | 1.2 | 1.2 | ∞ |
| Linearity | 4.7 | Rectangular | √3 | 1 | 1 | 2.7 | 2.7 | ∞ |
| Detection Limits | 0.25 | Rectangular | √3 | 1 | 1 | 0.14 | 0.14 | ∞ |
| Probe Modulation Response | 3.5 | Rectangular | √3 | 1 | 1 | 2.0 | 2.0 | ∞ |
| Readout Electronics | 0.3 | Normal | 1 | 1 | 1 | 0.3 | 0.3 | ∞ |
| Response Time | 0.0 | Rectangular | √3 | 1 | 1 | 0.0 | 0.0 | ∞ |
| Integration Time | 1.7 | Rectangular | √3 | 1 | 1 | 1.0 | 1.0 | ∞ |
| RF Ambient Conditions – Noise | 3.0 | Rectangular | √3 | 1 | 1 | 1.7 | 1.7 | ∞ |
| RF Ambient Conditions – Reflections | 3.0 | Rectangular | √3 | 1 | 1 | 1.7 | 1.7 | ∞ |
| Probe Positioner Mechanical Tolerance | 0.4 | Rectangular | √3 | 1 | 1 | 0.2 | 0.2 | ∞ |
| Probe Positioning with Respect to Phantom | 6.7 | Rectangular | √3 | 1 | 1 | 3.9 | 3.9 | ∞ |
| Post-processing | 4.0 | Rectangular | √3 | 1 | 1 | 2.3 | 2.3 | ∞ |
| Test Sample Related | | | | | | | | |
| Test Sample Positioning | 4.38 / 1.35 | Normal | 1 | 1 | 1 | 4.4 | 1.4 | 29 |
| Device Holder Uncertainty | 2.9 / 4.1 | Normal | 1 | 1 | 1 | 2.9 | 4.1 | 11 |
| Power Drift of Measurement | 5.0 | Rectangular | √3 | 1 | 1 | 2.9 | 2.9 | ∞ |
| Power Scaling | 0.0 | Rectangular | √3 | 1 | 1 | 0.0 | 0.0 | ∞ |
| Phantom and Setup | | | | | | | | |
| Phantom Uncertainty (Shape and Thickness Tolerances) | 7.6 | Rectangular | √3 | 1 | 1 | 4.4 | 4.4 | ∞ |
| Liquid Conductivity (Temperature Uncertainty) | 3.24 | Rectangular | √3 | 0.78 | 0.71 | 1.5 | 1.3 | ∞ |
| Liquid Conductivity (Measured) | 2.88 | Normal | 1 | 0.78 | 0.71 | 2.2 | 2.0 | 43 |
| Liquid Permittivity (Temperature Uncertainty) | 1.13 | Rectangular | √3 | 0.23 | 0.26 | 0.2 | 0.2 | ∞ |
| Liquid Permittivity (Measured) | 2.50 | Normal | 1 | 0.23 | 0.26 | 0.6 | 0.7 | 54 |
| Combined Standard Uncertainty | | | | | | ± 12.8 % | ± 12.4 % | |
| Expanded Uncertainty (K=2) | | | | | | ± 25.6 % | ± 24.8 % | |

Body SAR Uncertainty Budget for Frequency Range of 3 GHz to 6 GHz

7. Information on the Testing Laboratories

We, Bureau Veritas Consumer Products Services (H.K.) Ltd., Taoyuan Branch, were founded in 1988 to provide our best service in EMC, Radio, Telecom and Safety consultation. Our laboratories are accredited and approved according to ISO/IEC 17025.

If you have any comments, please feel free to contact us at the following:

Taiwan HwaYa EMC/RF/Safety/Telecom Lab:

Add: No. 19, Hwa Ya 2nd Rd, Wen Hwa Vil., Kwei Shan Hsiang, Taoyuan Hsien 333, Taiwan, R.O.C.

Tel: 886-3-318-3232

Fax: 886-3-327-0892

Taiwan LinKo EMC/RF Lab:

Add: No. 47-2, 14th Ling, Chia Pau Vil., Linkou Dist., New Taipei City 244, Taiwan, R.O.C.

Tel: 886-2-2605-2180

Fax: 886-2-2605-1924

Taiwan HsinChu EMC/RF Lab:

Add: No. 81-1, Lu Liao Keng, 9th Ling, Wu Lung Vil., Chiung Lin Township, Hsinchu County 307, Taiwan, R.O.C.

Tel: 886-3-593-5343

Fax: 886-3-593-5342

Email: service.adt@tw.bureauveritas.com

Web Site: www.adt.com.tw

The road map of all our labs can be found in our web site also.

---END---



Appendix A. SAR Plots of System Verification

The plots for system verification with largest deviation for each SAR system combination are shown as follows.

System Check_B835_170831

DUT: Dipole 835 MHz; Type: D835V2; SN: 4d092

Communication System: CW; Frequency: 835 MHz; Duty Cycle: 1:1

Medium: B07T10N1_0831 Medium parameters used: $f = 835 \text{ MHz}$; $\sigma = 1.015 \text{ S/m}$; $\epsilon_r = 56.103$; $\rho = 1000 \text{ kg/m}^3$

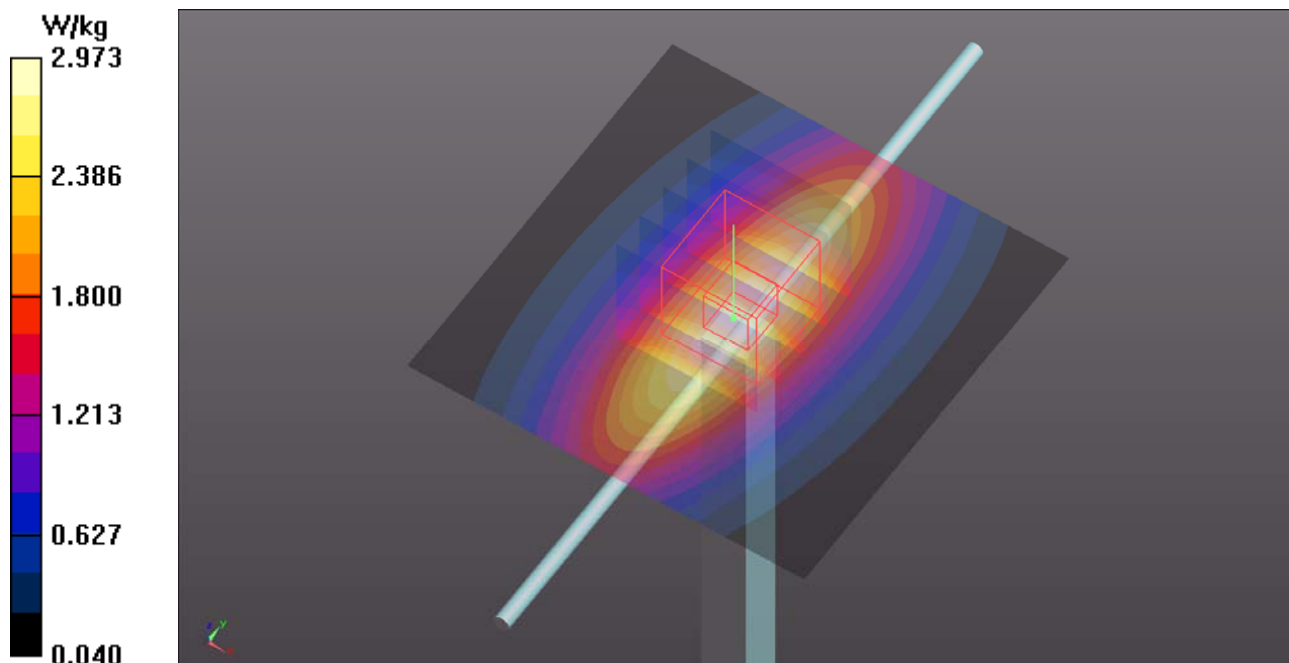
Ambient Temperature : $23.6 \text{ }^\circ\text{C}$; Liquid Temperature : $23.3 \text{ }^\circ\text{C}$

DASY5 Configuration:

- Probe: ET3DV6 - SN1790; ConvF(6.66, 6.66, 6.66); Calibrated: 2017/05/24;
- Sensor-Surface: 4mm (Mechanical Surface Detection)
- Electronics: DAE4 Sn917; Calibrated: 2017/01/06
- Phantom: ELI Phantom_1204; Type: QDOVA;
- Measurement SW: DASY52, Version 52.8 (8); SEMCAD X Version 14.6.10 (7373)

Pin=250mW/Area Scan (61x61x1): Interpolated grid: $dx=1.500 \text{ mm}$, $dy=1.500 \text{ mm}$
Maximum value of SAR (interpolated) = 2.97 W/kg

Pin=250mW/Zoom Scan (5x5x7)/Cube 0: Measurement grid: $dx=8\text{mm}$, $dy=8\text{mm}$, $dz=5\text{mm}$
Reference Value = 56.34 V/m ; Power Drift = -0.04 dB
Peak SAR (extrapolated) = 3.35 W/kg
SAR(1 g) = 2.22 W/kg ; SAR(10 g) = 1.46 W/kg
Maximum value of SAR (measured) = 2.97 W/kg



System Check_B2450_170903

DUT: Dipole 2450 MHz; Type: D2450V2; SN: 869

Communication System: CW; Frequency: 2450 MHz; Duty Cycle: 1:1

Medium: B19T27N2_0903 Medium parameters used: $f = 2450$ MHz; $\sigma = 2.012$ S/m; $\epsilon_r = 51.208$; $\rho = 1000$ kg/m³

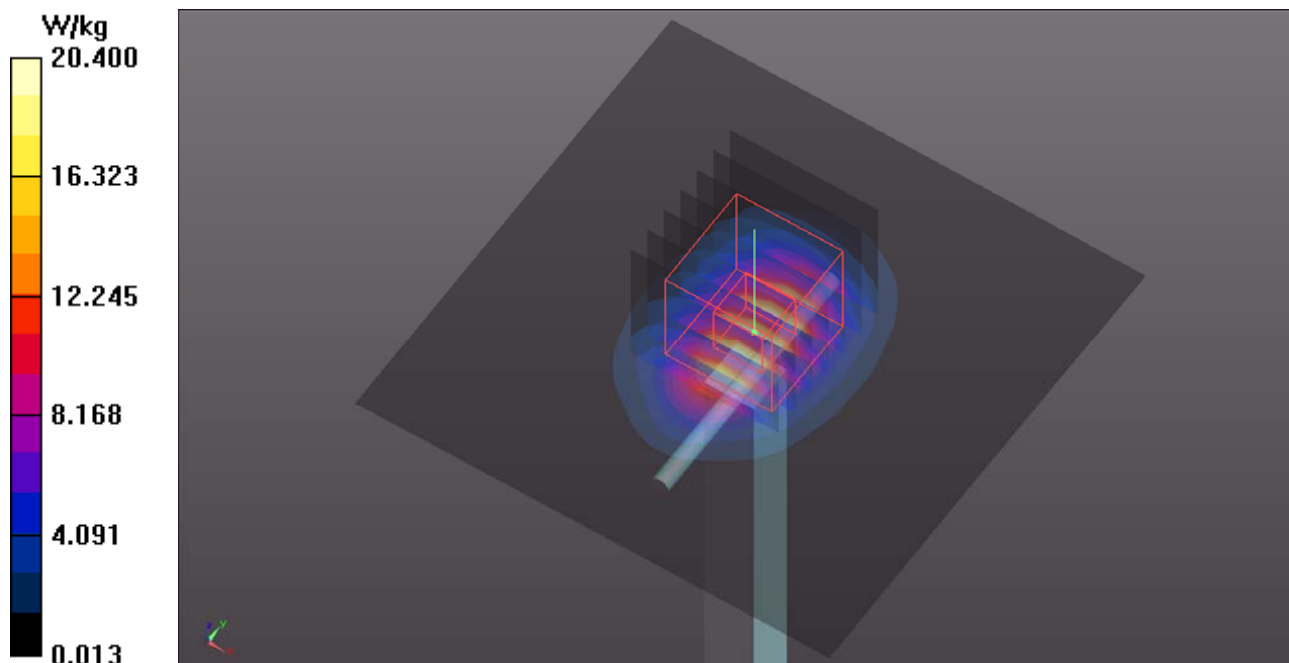
Ambient Temperature : 23.7 °C ; Liquid Temperature : 23.3 °C

DASY5 Configuration:

- Probe: EX3DV4 - SN7351; ConvF(7.73, 7.73, 7.73); Calibrated: 2016/12/20;
- Sensor-Surface: 1.4mm (Mechanical Surface Detection)
- Electronics: DAE4 Sn861; Calibrated: 2017/05/22
- Phantom: ELI Phantom_1204; Type: QDOVA;
- Measurement SW: DASY52, Version 52.8 (8); SEMCAD X Version 14.6.10 (7373)

Pin=250mW/Area Scan (81x81x1): Interpolated grid: dx=1.200 mm, dy=1.200 mm
Maximum value of SAR (interpolated) = 20.4 W/kg

Pin=250mW/Zoom Scan (7x7x7)/Cube 0: Measurement grid: dx=5mm, dy=5mm, dz=5mm
Reference Value = 102.7 V/m; Power Drift = -0.03 dB
Peak SAR (extrapolated) = 27.6 W/kg
SAR(1 g) = 13.4 W/kg; SAR(10 g) = 6.12 W/kg
Maximum value of SAR (measured) = 20.5 W/kg



System Check_B5300_170902

DUT: Dipole 5 GHz; Type: D5GHzV2; SN: 1203

Communication System: CW; Frequency: 5300 MHz; Duty Cycle: 1:1

Medium: B34T60N3_0902 Medium parameters used: $f = 5300$ MHz; $\sigma = 5.529$ S/m; $\epsilon_r = 47.086$; $\rho = 1000$ kg/m³

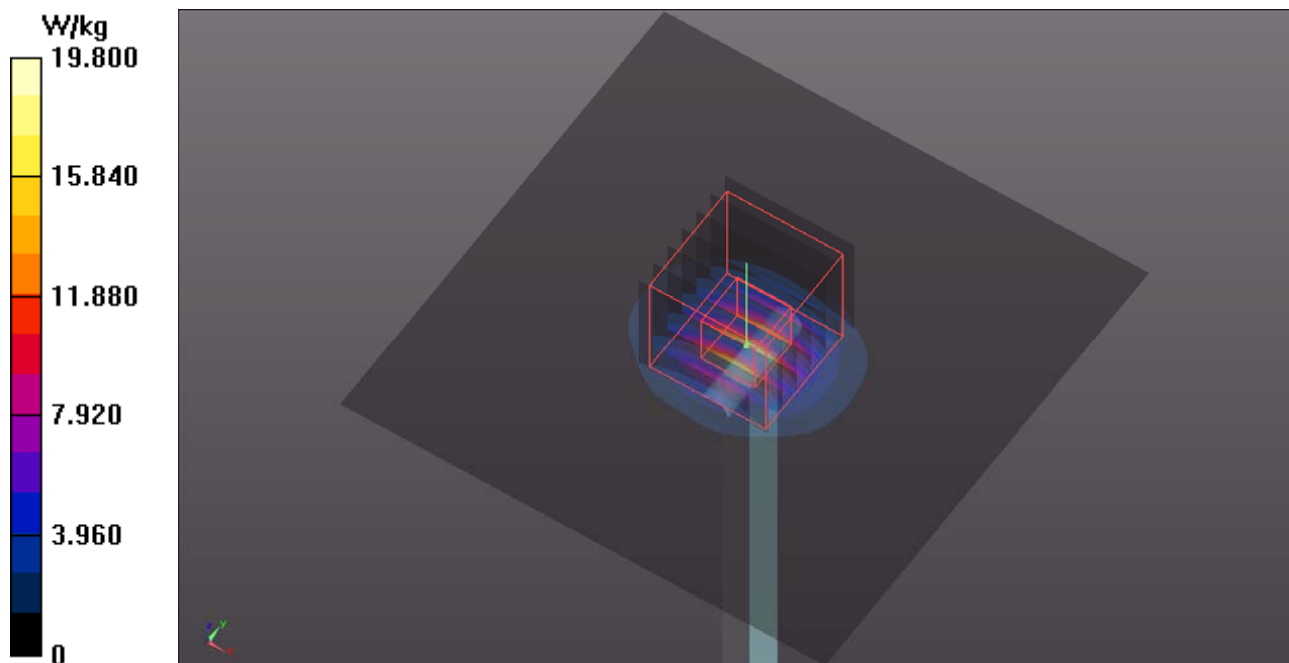
Ambient Temperature : 23.5 °C ; Liquid Temperature : 23.3 °C

DASY5 Configuration:

- Probe: EX3DV4 - SN7351; ConvF(4.51, 4.51, 4.51); Calibrated: 2016/12/20;
- Sensor-Surface: 1.4mm (Mechanical Surface Detection)
- Electronics: DAE4 Sn861; Calibrated: 2017/05/22
- Phantom: ELI Phantom_1204; Type: QDOVA
- Measurement SW: DASY52, Version 52.8 (8); SEMCAD X Version 14.6.10 (7373)

Pin=100mW/Area Scan (91x91x1): Interpolated grid: dx=1.000 mm, dy=1.000 mm
Maximum value of SAR (interpolated) = 19.8 W/kg

Pin=100mW/Zoom Scan (7x7x12)/Cube 0: Measurement grid: dx=4mm, dy=4mm, dz=2mm
Reference Value = 61.87 V/m; Power Drift = -0.13 dB
Peak SAR (extrapolated) = 33.7 W/kg
SAR(1 g) = 8.22 W/kg; SAR(10 g) = 2.29 W/kg
Maximum value of SAR (measured) = 20.8 W/kg



System Check_B5600_170903

DUT: Dipole 5 GHz; Type: D5GHzV2; SN: 1203

Communication System: CW; Frequency: 5600 MHz; Duty Cycle: 1:1

Medium: B34T60N1_0903 Medium parameters used: $f = 5600$ MHz; $\sigma = 5.885$ S/m; $\epsilon_r = 46.751$; $\rho = 1000$ kg/m³

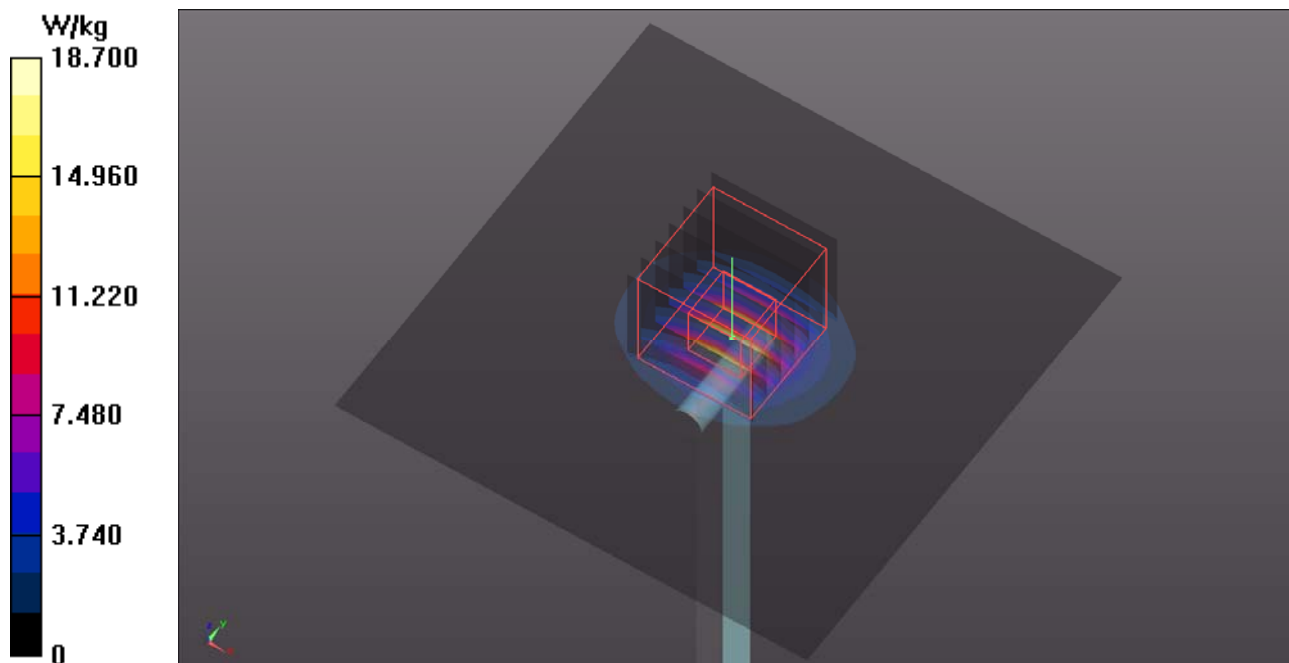
Ambient Temperature : 23.7 °C ; Liquid Temperature : 23.3 °C

DASY5 Configuration:

- Probe: EX3DV4 - SN7351; ConvF(3.85, 3.85, 3.85); Calibrated: 2016/12/20;
- Sensor-Surface: 1.4mm (Mechanical Surface Detection)
- Electronics: DAE4 Sn861; Calibrated: 2017/05/22
- Phantom: ELI Phantom_1204; Type: QDOVA;
- Measurement SW: DASY52, Version 52.8 (8); SEMCAD X Version 14.6.10 (7373)

Pin=100mW/Area Scan (91x91x1): Interpolated grid: dx=1.000 mm, dy=1.000 mm
Maximum value of SAR (interpolated) = 18.7 W/kg

Pin=100mW/Zoom Scan (7x7x12)/Cube 0: Measurement grid: dx=4mm, dy=4mm, dz=2mm
Reference Value = 67.65 V/m; Power Drift = -0.15 dB
Peak SAR (extrapolated) = 34.4 W/kg
SAR(1 g) = 8.09 W/kg; SAR(10 g) = 2.29 W/kg
Maximum value of SAR (measured) = 20.8 W/kg





Appendix B. SAR Plots of SAR Measurement

The SAR plots for highest measured SAR in each exposure configuration, wireless mode and frequency band combination, and measured SAR > 1.5 W/kg are shown as follows.

P01 WCDMA V_RMC12.2K_Rear Face_0cm_Ch4132_P-Sensor_w

DUT: 170713C02

Communication System: WCDMA; Frequency: 826.4 MHz; Duty Cycle: 1:1

Medium: B07T10N1_0901 Medium parameters used: $f = 826.4$ MHz; $\sigma = 0.993$ S/m; $\epsilon_r = 54.28$; $\rho = 1000$ kg/m³

Ambient Temperature : 23.5 °C ; Liquid Temperature : 23.3 °C

DASY5 Configuration:

- Probe: ET3DV6 - SN1790; ConvF(6.66, 6.66, 6.66); Calibrated: 2017/05/24;
- Sensor-Surface: 4mm (Mechanical Surface Detection)
- Electronics: DAE4 Sn917; Calibrated: 2017/01/06
- Phantom: ELI Phantom_1204; Type: QDOVA;
- Measurement SW: DASY52, Version 52.8 (8); SEMCAD X Version 14.6.10 (7373)

- **Area Scan (141x191x1):** Interpolated grid: dx=1.500 mm, dy=1.500 mm

Maximum value of SAR (interpolated) = 0.967 W/kg

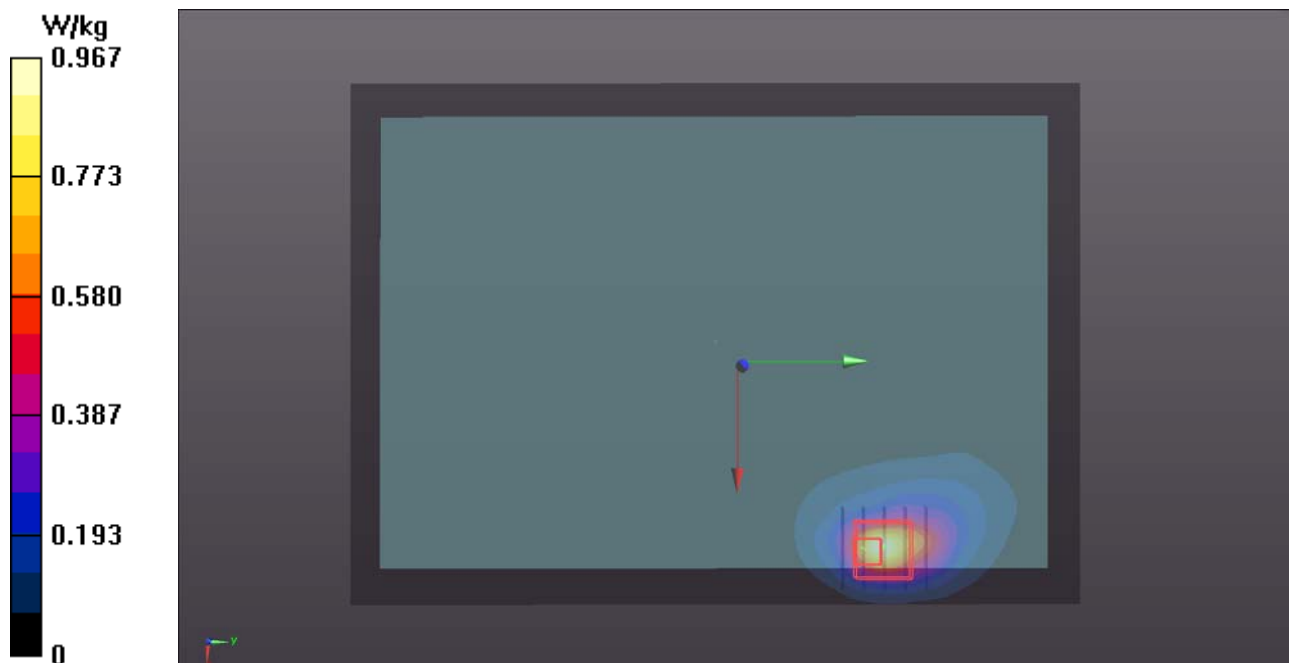
- **Zoom Scan (5x5x7)/Cube 0:** Measurement grid: dx=8mm, dy=8mm, dz=5mm

Reference Value = 30.41 V/m; Power Drift = -0.16 dB

Peak SAR (extrapolated) = 2.42 W/kg

SAR(1 g) = 0.699 W/kg; SAR(10 g) = 0.289 W/kg

Maximum value of SAR (measured) = 0.813 W/kg



P02 LTE 5_QPSK10M_Rear Face_1.2cm_Ch20525_1RB_OS0_P-Sensor_w_o

DUT: 170713C02

Communication System: LTE; Frequency: 836.5 MHz; Duty Cycle: 1:1

Medium: B07T10N1_0901 Medium parameters used: $f = 836.5$ MHz; $\sigma = 1.003$ S/m; $\epsilon_r = 54.187$; $\rho = 1000$ kg/m³

Ambient Temperature : 23.5 °C ; Liquid Temperature : 23.3 °C

DASY5 Configuration:

- Probe: ET3DV6 - SN1790; ConvF(6.66, 6.66, 6.66); Calibrated: 2017/05/24;
- Sensor-Surface: 4mm (Mechanical Surface Detection)
- Electronics: DAE4 Sn917; Calibrated: 2017/01/06
- Phantom: ELI Phantom_1204; Type: QDOVA;
- Measurement SW: DASY52, Version 52.8 (8); SEMCAD X Version 14.6.10 (7373)

- **Area Scan (141x191x1):** Interpolated grid: dx=1.500 mm, dy=1.500 mm

Maximum value of SAR (interpolated) = 0.861 W/kg

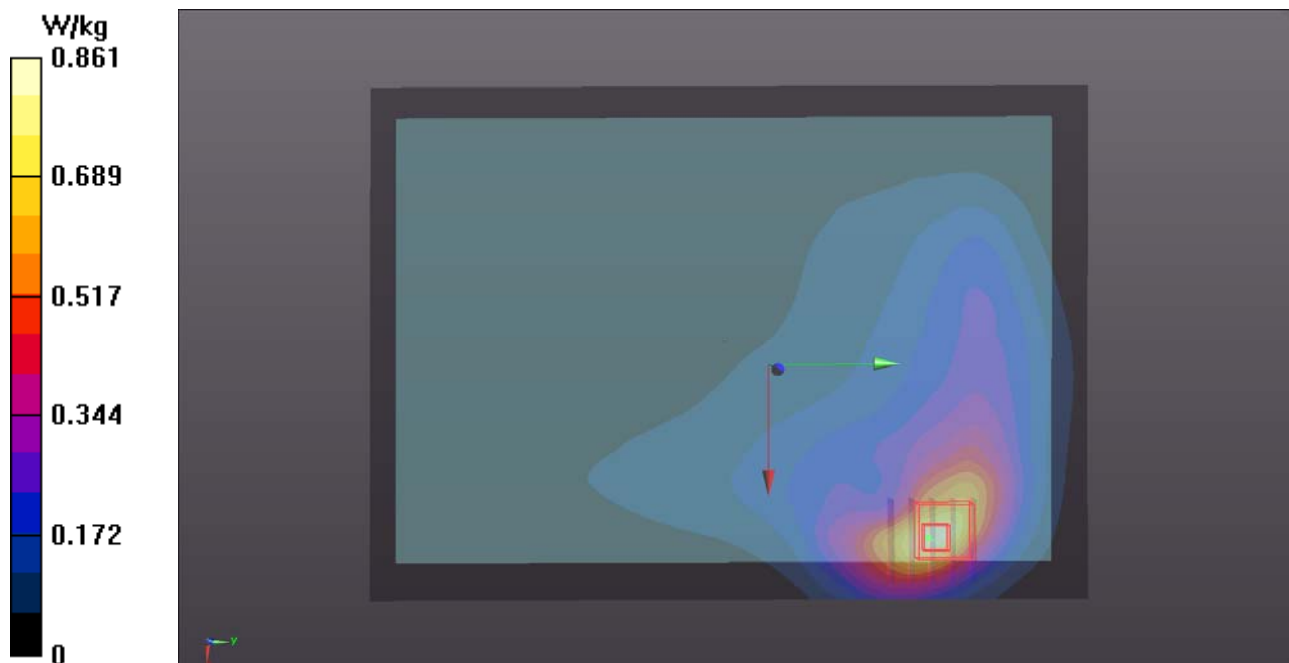
- **Zoom Scan (5x5x7)/Cube 0:** Measurement grid: dx=8mm, dy=8mm, dz=5mm

Reference Value = 29.27 V/m; Power Drift = 0.07 dB

Peak SAR (extrapolated) = 1.29 W/kg

SAR(1 g) = 0.762 W/kg; SAR(10 g) = 0.456 W/kg

Maximum value of SAR (measured) = 0.822 W/kg



P03 2.4G WLAN_802.11n HT20_Rear Face_0cm_Ch11_Ant0+1

DUT: 170713C02

Communication System: WLAN_2.4G; Frequency: 2462 MHz; Duty Cycle: 1:1

Medium: B19T27N5_0902 Medium parameters used: $f = 2462$ MHz; $\sigma = 2.049$ S/m; $\epsilon_r = 51.337$; $\rho =$

1000 kg/m³

Ambient Temperature : 23.5 °C ; Liquid Temperature : 23.3 °C

DASY5 Configuration:

- Probe: EX3DV4 - SN7351; ConvF(7.73, 7.73, 7.73); Calibrated: 2016/12/20;
- Sensor-Surface: 1.4mm (Mechanical Surface Detection)
- Electronics: DAE4 Sn861; Calibrated: 2017/05/22
- Phantom: ELI Phantom_1204; Type: QDOVA;
- Measurement SW: DASY52, Version 52.8 (8); SEMCAD X Version 14.6.10 (7373)

- **Area Scan (181x241x1):** Interpolated grid: dx=1.200 mm, dy=1.200 mm

Maximum value of SAR (interpolated) = 0.466 W/kg

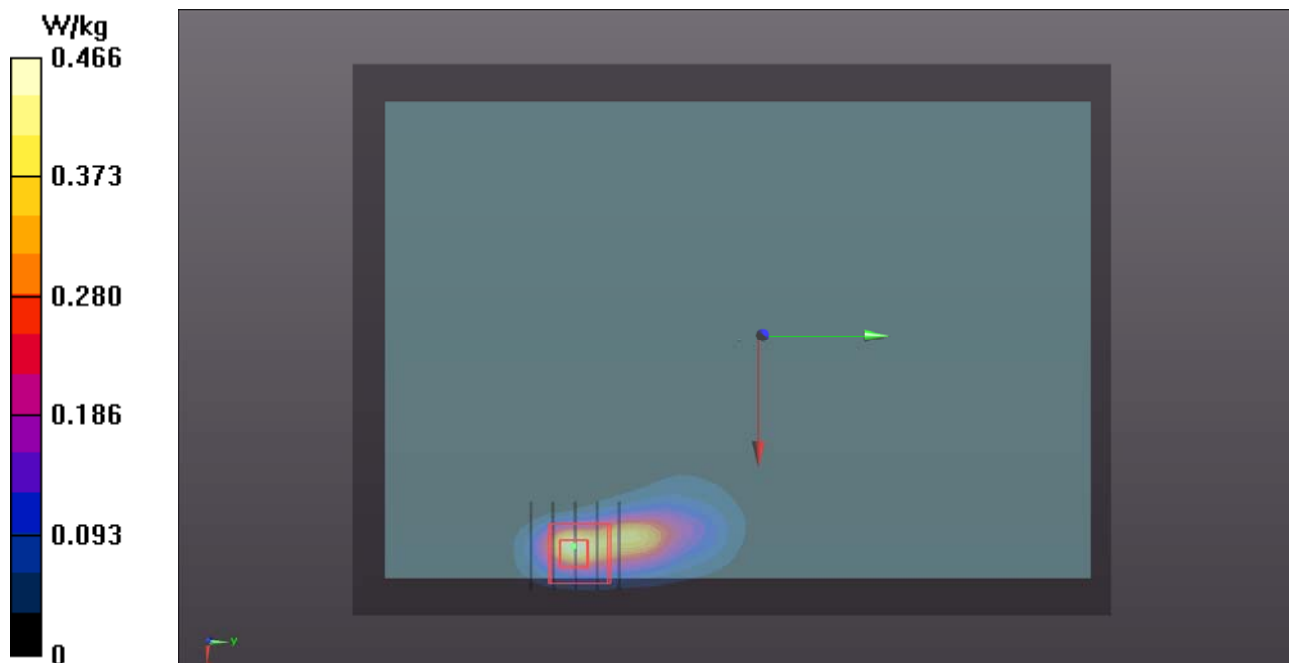
- **Zoom Scan (5x5x7)/Cube 0:** Measurement grid: dx=8mm, dy=8mm, dz=5mm

Reference Value = 14.21 V/m; Power Drift = -0.02 dB

Peak SAR (extrapolated) = 0.731 W/kg

SAR(1 g) = 0.295 W/kg; SAR(10 g) = 0.110 W/kg

Maximum value of SAR (measured) = 0.515 W/kg



P04 5.3G WLAN_802.11n HT40_Rear Face_0cm_Ch54_Ant0+1

DUT: 170713C02

Communication System: WLAN_5G; Frequency: 5270 MHz; Duty Cycle: 1:1

Medium: B34T60N3_0902 Medium parameters used: $f = 5270$ MHz; $\sigma = 5.502$ S/m; $\epsilon_r = 47.079$; $\rho = 1000$ kg/m³

Ambient Temperature : 23.5 °C ; Liquid Temperature : 23.3 °C

DASY5 Configuration:

- Probe: EX3DV4 - SN7351; ConvF(4.51, 4.51, 4.51); Calibrated: 2016/12/20;
- Sensor-Surface: 1.4mm (Mechanical Surface Detection)
- Electronics: DAE4 Sn861; Calibrated: 2017/05/22
- Phantom: ELI Phantom_1204; Type: QDOVA;
- Measurement SW: DASY52, Version 52.8 (8); SEMCAD X Version 14.6.10 (7373)

- **Area Scan (201x281x1):** Interpolated grid: dx=1.000 mm, dy=1.000 mm

Maximum value of SAR (interpolated) = 0.157 W/kg

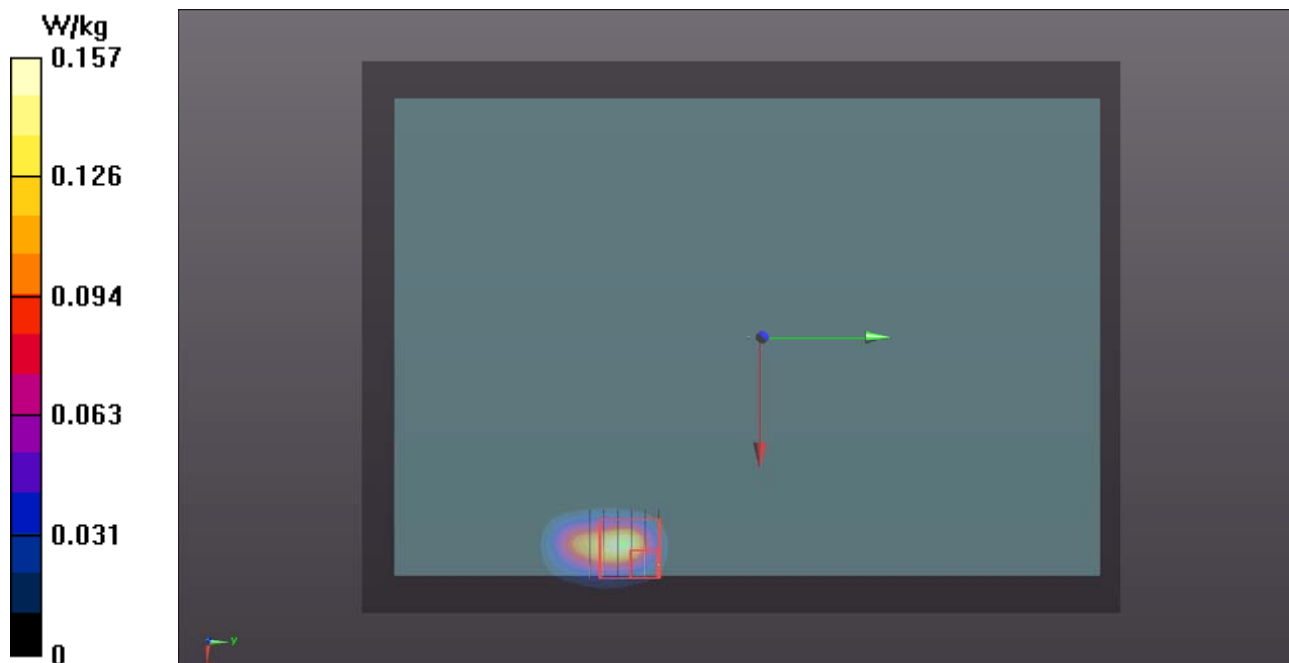
- **Zoom Scan (6x6x12)/Cube 0:** Measurement grid: dx=5mm, dy=5mm, dz=2mm

Reference Value = 5.500 V/m; Power Drift = -0.03 dB

Peak SAR (extrapolated) = 6.39 W/kg

SAR(1 g) = 0.754 W/kg; SAR(10 g) = 0.106 W/kg

Maximum value of SAR (measured) = 3.05 W/kg



P05 5.6G WLAN_802.11n HT20_Rear Face_0cm_Ch100_Ant1

DUT: 170713C02

Communication System: WLAN_5G; Frequency: 5500 MHz; Duty Cycle: 1:1

Medium: B34T60N1_0903 Medium parameters used: $f = 5500$ MHz; $\sigma = 5.753$ S/m; $\epsilon_r = 46.944$; $\rho = 1000$ kg/m³

Ambient Temperature : 23.7 °C ; Liquid Temperature : 23.3 °C

DASY5 Configuration:

- Probe: EX3DV4 - SN7351; ConvF(3.93, 3.93, 3.93); Calibrated: 2016/12/20;
- Sensor-Surface: 1.4mm (Mechanical Surface Detection)
- Electronics: DAE4 Sn861; Calibrated: 2017/05/22
- Phantom: ELI Phantom_1204; Type: QDOVA;
- Measurement SW: DASY52, Version 52.8 (8); SEMCAD X Version 14.6.10 (7373)

- **Area Scan (201x281x1):** Interpolated grid: dx=1.000 mm, dy=1.000 mm

Maximum value of SAR (interpolated) = 1.11 W/kg

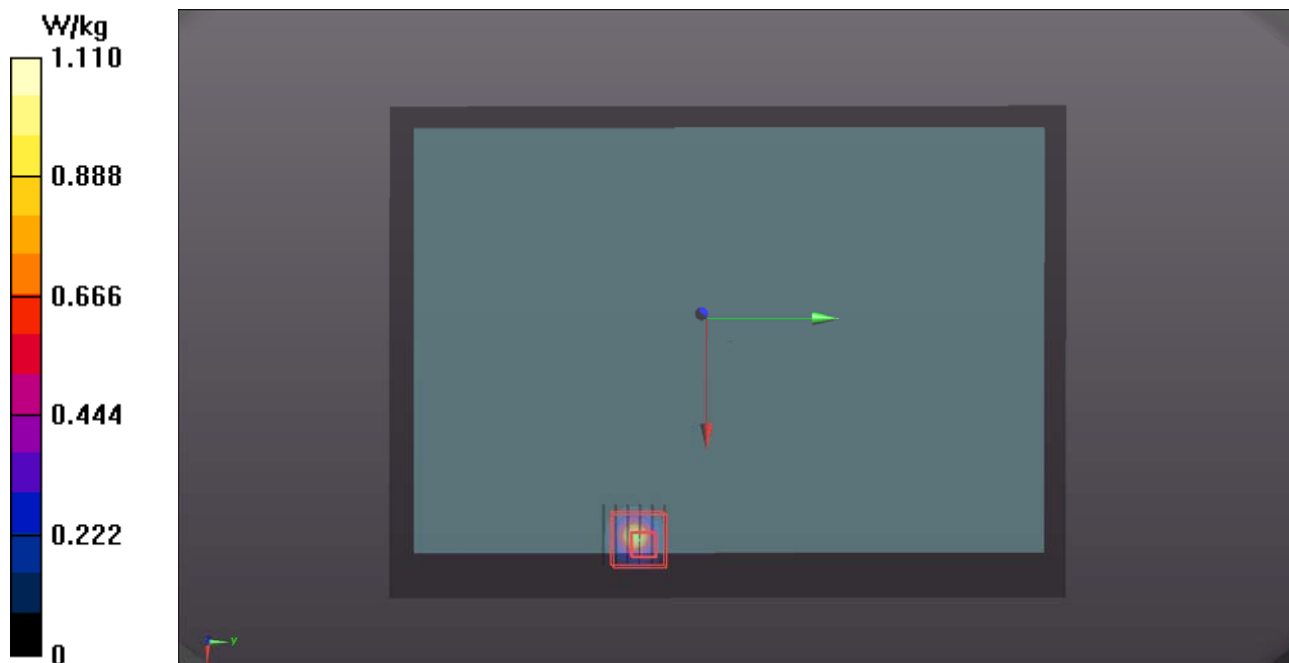
- **Zoom Scan (6x6x12)/Cube 0:** Measurement grid: dx=5mm, dy=5mm, dz=2mm

Reference Value = 15.97 V/m; Power Drift = -0.11 dB

Peak SAR (extrapolated) = 4.54 W/kg

SAR(1 g) = 0.726 W/kg; SAR(10 g) = 0.133 W/kg

Maximum value of SAR (measured) = 2.39 W/kg



P06 Bluetooth_Rear Face_0cm_Ch78_Ant0

DUT: 170713C02

Communication System: BT; Frequency: 2480 MHz; Duty Cycle: 1:1

Medium: B19T27N1_0905 Medium parameters used: $f = 2480$ MHz; $\sigma = 2.022$ S/m; $\epsilon_r = 52.326$; $\rho = 1000$ kg/m³

Ambient Temperature : 23.5 °C ; Liquid Temperature : 23.3 °C

DASY5 Configuration:

- Probe: EX3DV4 - SN3971; ConvF(7.67, 7.67, 7.67); Calibrated: 2017/03/24;
- Sensor-Surface: 1.4mm (Mechanical Surface Detection)
- Electronics: DAE4 Sn916; Calibrated: 2016/12/15
- Phantom: ELI Phantom_1206; Type: QDOVA;
- Measurement SW: DASY52, Version 52.8 (8); SEMCAD X Version 14.6.10 (7373)

- **Area Scan (181x241x1):** Interpolated grid: dx=1.200 mm, dy=1.200 mm

Maximum value of SAR (interpolated) = 0.574 W/kg

- **Zoom Scan (5x5x7)/Cube 0:** Measurement grid: dx=8mm, dy=8mm, dz=5mm

Reference Value = 17.38 V/m; Power Drift = -0.15 dB

Peak SAR (extrapolated) = 0.812 W/kg

SAR(1 g) = 0.307 W/kg; SAR(10 g) = 0.113 W/kg

Maximum value of SAR (measured) = 0.576 W/kg

