



**Attachment 1 – System Validation Plots**

Test Laboratory: JAPAN QUALITY ASSURANCE ORGANIZATION

## System Validation (Head 900 MHz)

**DUT: Dipole 900 MHz; Type: D900V2; Serial: 153**

Communication System: CW; Frequency: 900 MHz; Duty Cycle: 1:1

Medium: HSL900 Medium parameters used:  $f = 900 \text{ MHz}$ ;  $\sigma = 0.94 \text{ mho/m}$ ;  $\epsilon_r = 40.8$ ;  $\rho = 1000 \text{ kg/m}^3$

Phantom section: Flat Section

Measurement Standard: DASY4 (High Precision Assessment)

DASY4 Configuration:

- Probe: ET3DV6 - SN1679; ConvF(6.69, 6.69, 6.69); Calibrated: 2007/11/15
- Sensor-Surface: 4mm (Mechanical And Optical Surface Detection)
- Electronics: DAE3 Sn328; Calibrated: 2008/03/06
- Phantom: SAM 1200; Type: QD 000 P40 CA; Serial: 1200
- Measurement SW: DASY4, V4.7 Build 44; Postprocessing SW: SEMCAD, V1.8 Build 171

**Antenna Input Power 250 mW/Area Scan (5x5x1):** Measurement grid: dx=20mm, dy=20mm

Maximum value of SAR (measured) = 2.69 mW/g

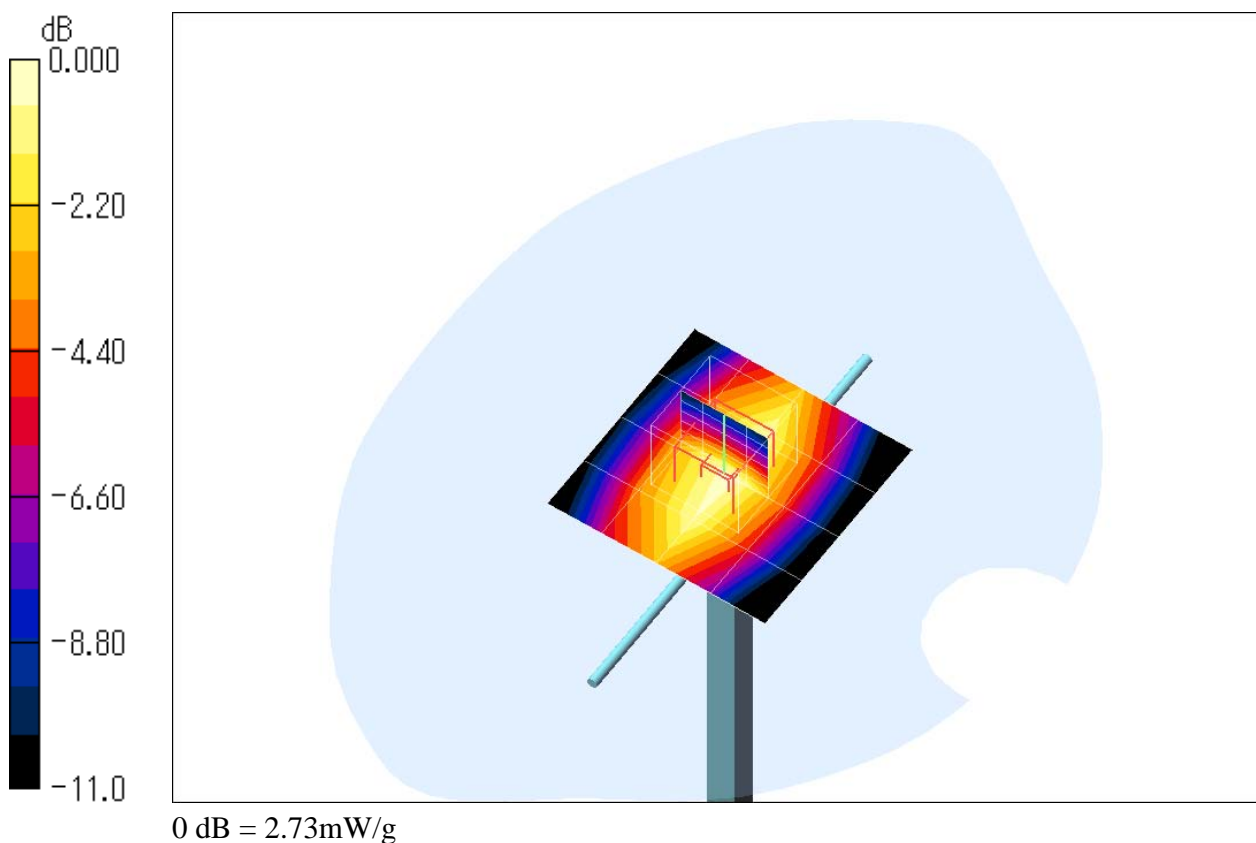
**Antenna Input Power 250 mW/Zoom Scan (5x5x7)/Cube 0:** Measurement grid: dx=8mm, dy=8mm, dz=5mm

Reference Value = 56.6 V/m; Power Drift = -0.015 dB

Peak SAR (extrapolated) = 3.50 W/kg

**SAR(1 g) = 2.51 mW/g; SAR(10 g) = 1.64 mW/g**

Maximum value of SAR (measured) = 2.73 mW/g



Test Laboratory: JAPAN QUALITY ASSURANCE ORGANIZATION

## System Validation (Body 900 MHz)

**DUT: Dipole 900 MHz; Type: D900V2; Serial: 153**

Communication System: CW; Frequency: 900 MHz; Duty Cycle: 1:1

Medium: M900 Medium parameters used:  $f = 900 \text{ MHz}$ ;  $\sigma = 1.02 \text{ mho/m}$ ;  $\epsilon_r = 54$ ;  $\rho = 1000 \text{ kg/m}^3$

Phantom section: Flat Section

Measurement Standard: DASY4 (High Precision Assessment)

DASY4 Configuration:

- Probe: ET3DV6 - SN1679; ConvF(6.18, 6.18, 6.18); Calibrated: 2007/11/15
- Sensor-Surface: 4mm (Mechanical And Optical Surface Detection)
- Electronics: DAE3 Sn328; Calibrated: 2008/03/06
- Phantom: SAM 1200; Type: QD 000 P40 CA; Serial: 1200
- Measurement SW: DASY4, V4.7 Build 44; Postprocessing SW: SEMCAD, V1.8 Build 171

**Antenna Input Power 250 mW/Area Scan (5x5x1):** Measurement grid:  $dx=20\text{mm}$ ,  $dy=20\text{mm}$

Maximum value of SAR (measured) = 2.95 mW/g

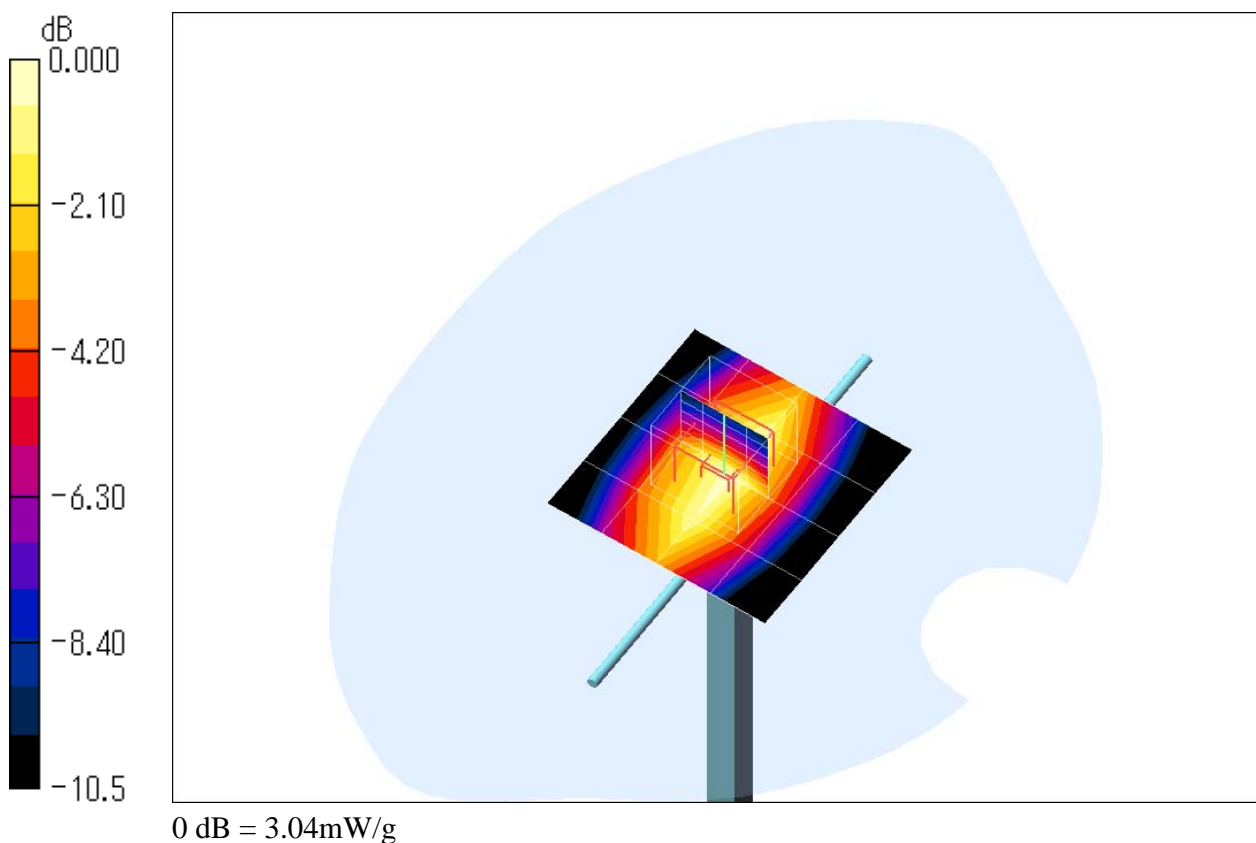
**Antenna Input Power 250 mW/Zoom Scan (5x5x7)/Cube 0:** Measurement grid:  $dx=8\text{mm}$ ,  $dy=8\text{mm}$ ,  $dz=5\text{mm}$

Reference Value = 56.5 V/m; Power Drift = 0.026 dB

Peak SAR (extrapolated) = 3.81 W/kg

**SAR(1 g) = 2.78 mW/g; SAR(10 g) = 1.83 mW/g**

Maximum value of SAR (measured) = 3.04 mW/g





**Attachment 2 – SAR Test Plots**

Test Laboratory: JAPAN QUALITY ASSURANCE ORGANIZATION

## Left Head, Cheek/Touch 4182ch (836.4MHz)

**DUT: Cellular Phone; Type: F-04A; Serial: 353709020001896**

Communication System: WCDMA; Frequency: 836.4 MHz; Duty Cycle: 1:1

Medium: HSL900 Medium parameters used:  $f = 836.4$  MHz;  $\sigma = 0.879$  mho/m;  $\epsilon_r = 41.5$ ;  $\rho = 1000$  kg/m<sup>3</sup>

Phantom section: Left Section

Measurement Standard: DASY4 (High Precision Assessment)

DASY4 Configuration:

- Probe: ET3DV6 - SN1679; ConvF(6.69, 6.69, 6.69); Calibrated: 2007/11/15
- Sensor-Surface: 4mm (Mechanical And Optical Surface Detection)
- Electronics: DAE3 Sn328; Calibrated: 2008/03/06
- Phantom: SAM 1200; Type: QD 000 P40 CA; Serial: 1200
- Measurement SW: DASY4, V4.7 Build 44; Postprocessing SW: SEMCAD, V1.8 Build 171

**Cheek/Touch Position/Area Scan (11x6x1):** Measurement grid: dx=15mm, dy=15mm

Maximum value of SAR (measured) = 0.411 mW/g

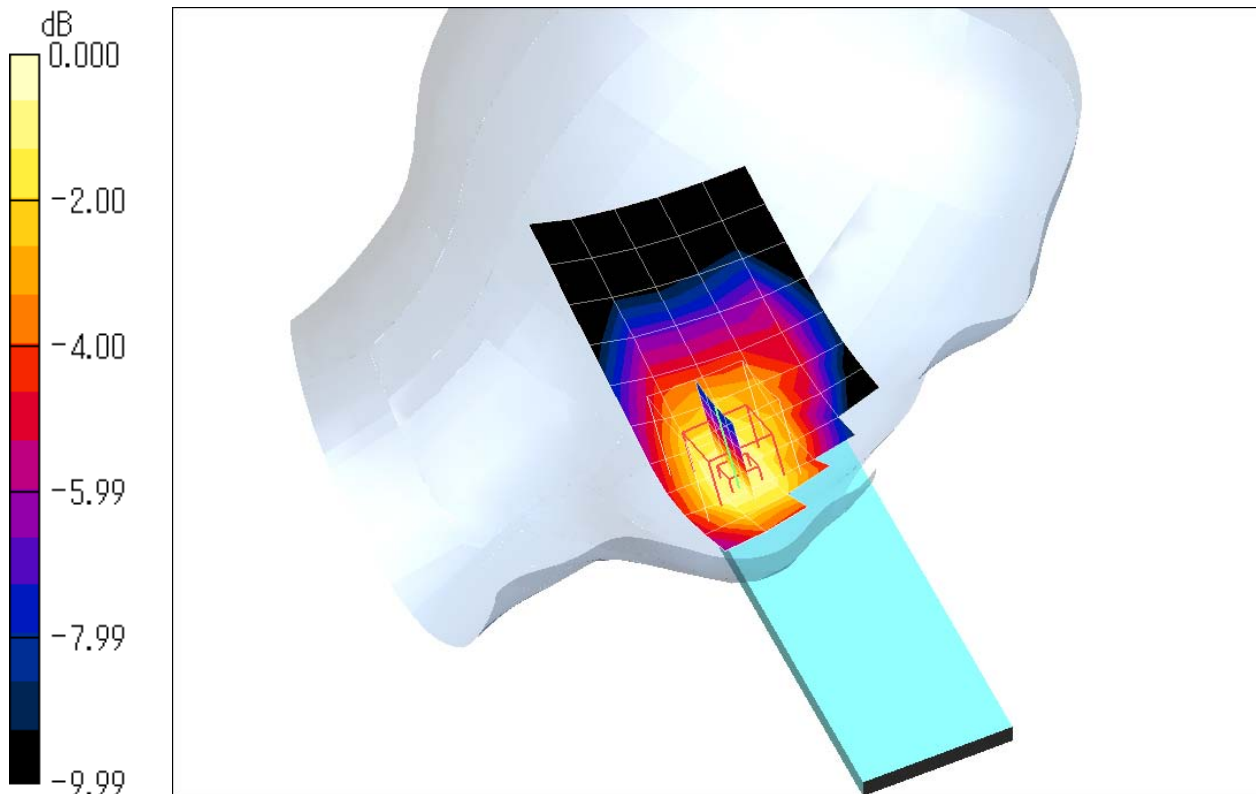
**Cheek/Touch Position/Zoom Scan (5x5x7)/Cube 0:** Measurement grid: dx=8mm, dy=8mm, dz=5mm

Reference Value = 19.1 V/m; Power Drift = 0.015 dB

Peak SAR (extrapolated) = 0.621 W/kg

**SAR(1 g) = 0.442 mW/g; SAR(10 g) = 0.294 mW/g**

Maximum value of SAR (measured) = 0.483 mW/g



0 dB = 0.483mW/g

Test Laboratory: JAPAN QUALITY ASSURANCE ORGANIZATION

## Left Head, Ear/Tilt 4182ch (836.4MHz)

**DUT: Cellular Phone; Type: F-04A; Serial: 353709020001896**

Communication System: WCDMA; Frequency: 836.4 MHz; Duty Cycle: 1:1

Medium: HSL900 Medium parameters used:  $f = 836.4$  MHz;  $\sigma = 0.879$  mho/m;  $\epsilon_r = 41.5$ ;  $\rho = 1000$  kg/m<sup>3</sup>

Phantom section: Left Section

Measurement Standard: DAS4 (High Precision Assessment)

DASY4 Configuration:

- Probe: ET3DV6 - SN1679; ConvF(6.69, 6.69, 6.69); Calibrated: 2007/11/15
- Sensor-Surface: 4mm (Mechanical And Optical Surface Detection)
- Electronics: DAE3 Sn328; Calibrated: 2008/03/06
- Phantom: SAM 1200; Type: QD 000 P40 CA; Serial: 1200
- Measurement SW: DAS4, V4.7 Build 44; Postprocessing SW: SEMCAD, V1.8 Build 171

**Ear/Tilt Position/Area Scan (11x6x1):** Measurement grid: dx=15mm, dy=15mm

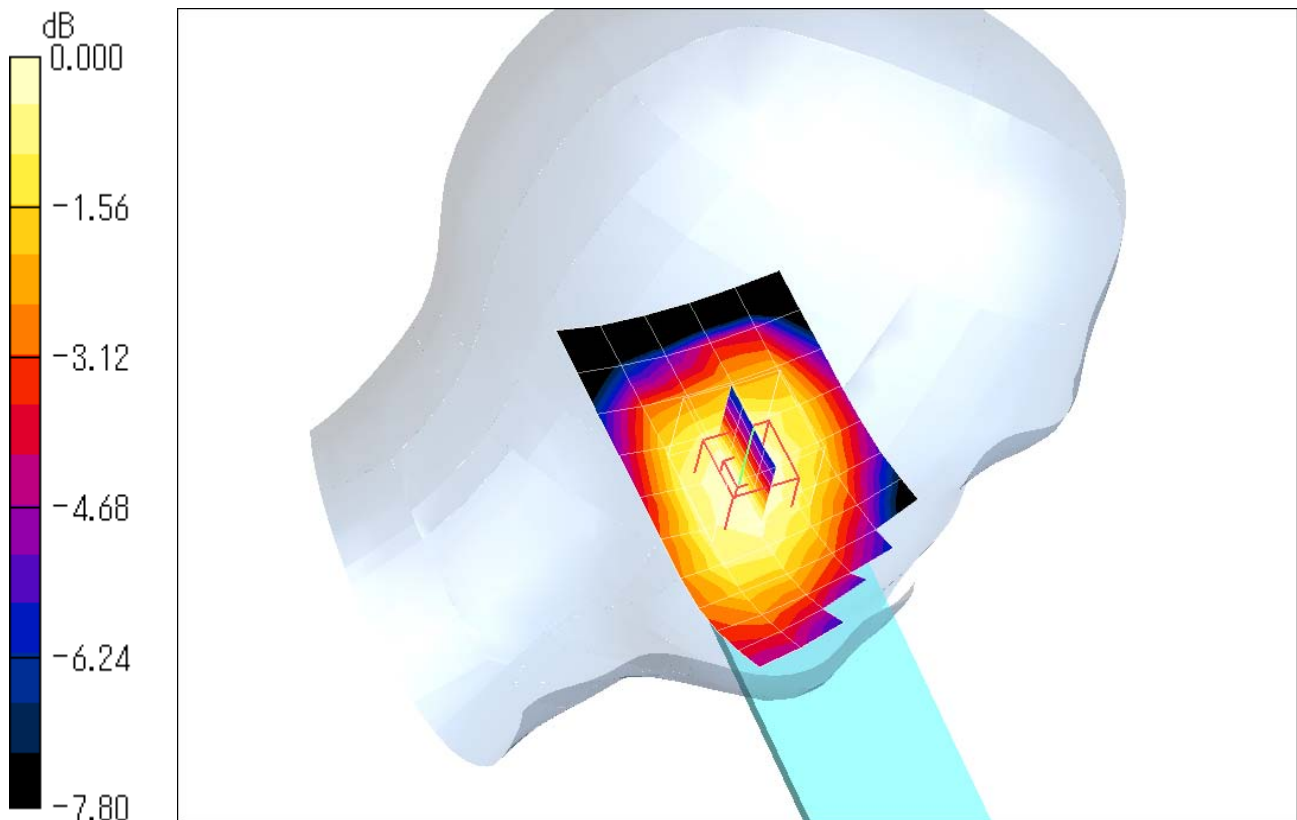
Maximum value of SAR (measured) = 0.109 mW/g

**Ear/Tilt Position/Zoom Scan (5x5x7)/Cube 0:** Measurement grid: dx=8mm, dy=8mm, dz=5mm

Reference Value = 11.2 V/m; Power Drift = -0.050 dB

Peak SAR (extrapolated) = 0.125 W/kg

**SAR(1 g) = 0.104 mW/g; SAR(10 g) = 0.080 mW/g**



0 dB = 0.109mW/g

Test Laboratory: JAPAN QUALITY ASSURANCE ORGANIZATION

## Right Head, Cheek/Touch 4132ch (826.4MHz)

**DUT: Cellular Phone; Type: F-04A; Serial: 353709020001896**

Communication System: WCDMA; Frequency: 826.4 MHz; Duty Cycle: 1:1

Medium: HSL900 Medium parameters used:  $f = 826.4$  MHz;  $\sigma = 0.879$  mho/m;  $\epsilon_r = 41.5$ ;  $\rho = 1000$  kg/m<sup>3</sup>

Phantom section: Right Section

Measurement Standard: DASY4 (High Precision Assessment)

DASY4 Configuration:

- Probe: ET3DV6 - SN1679; ConvF(6.69, 6.69, 6.69); Calibrated: 2007/11/15
- Sensor-Surface: 4mm (Mechanical And Optical Surface Detection)
- Electronics: DAE3 Sn328; Calibrated: 2008/03/06
- Phantom: SAM 1200; Type: QD 000 P40 CA; Serial: 1200
- Measurement SW: DASY4, V4.7 Build 44; Postprocessing SW: SEMCAD, V1.8 Build 171

**Cheek/Touch Position/Area Scan (11x6x1):** Measurement grid: dx=15mm, dy=15mm

Maximum value of SAR (measured) = 0.626 mW/g

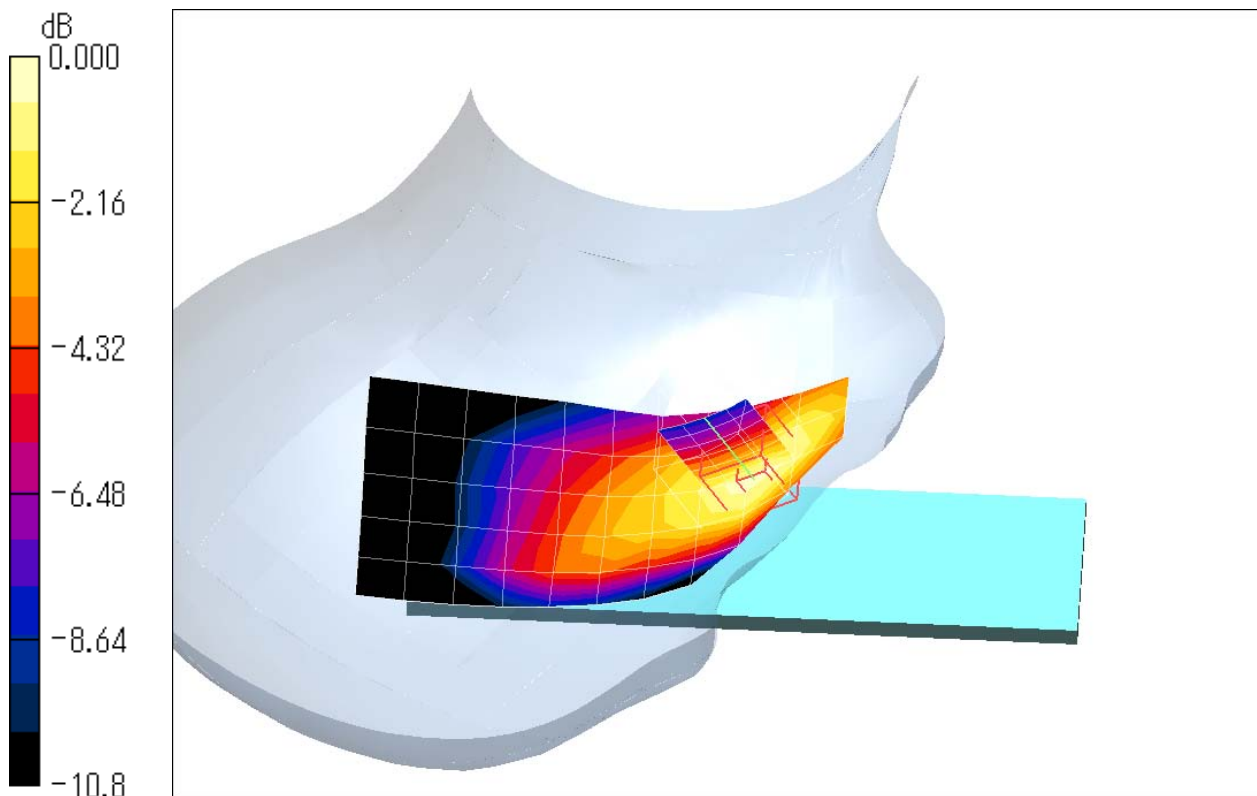
**Cheek/Touch Position/Zoom Scan (5x5x7)/Cube 0:** Measurement grid: dx=8mm, dy=8mm, dz=5mm

Reference Value = 20.7 V/m; Power Drift = 0.007 dB

Peak SAR (extrapolated) = 0.843 W/kg

**SAR(1 g) = 0.595 mW/g; SAR(10 g) = 0.397 mW/g**

Maximum value of SAR (measured) = 0.642 mW/g



0 dB = 0.642mW/g

Test Laboratory: JAPAN QUALITY ASSURANCE ORGANIZATION

## Right Head, Cheek/Touch 4132ch (826.4MHz)

**DUT: Cellular Phone; Type: F-04A; Serial: 353709020001896**

Communication System: WCDMA; Frequency: 826.4 MHz; Duty Cycle: 1:1

Medium: HSL900 Medium parameters used:  $f = 826.4 \text{ MHz}$ ;  $\sigma = 0.879 \text{ mho/m}$ ;  $\epsilon_r = 41.5$ ;  $\rho = 1000 \text{ kg/m}^3$

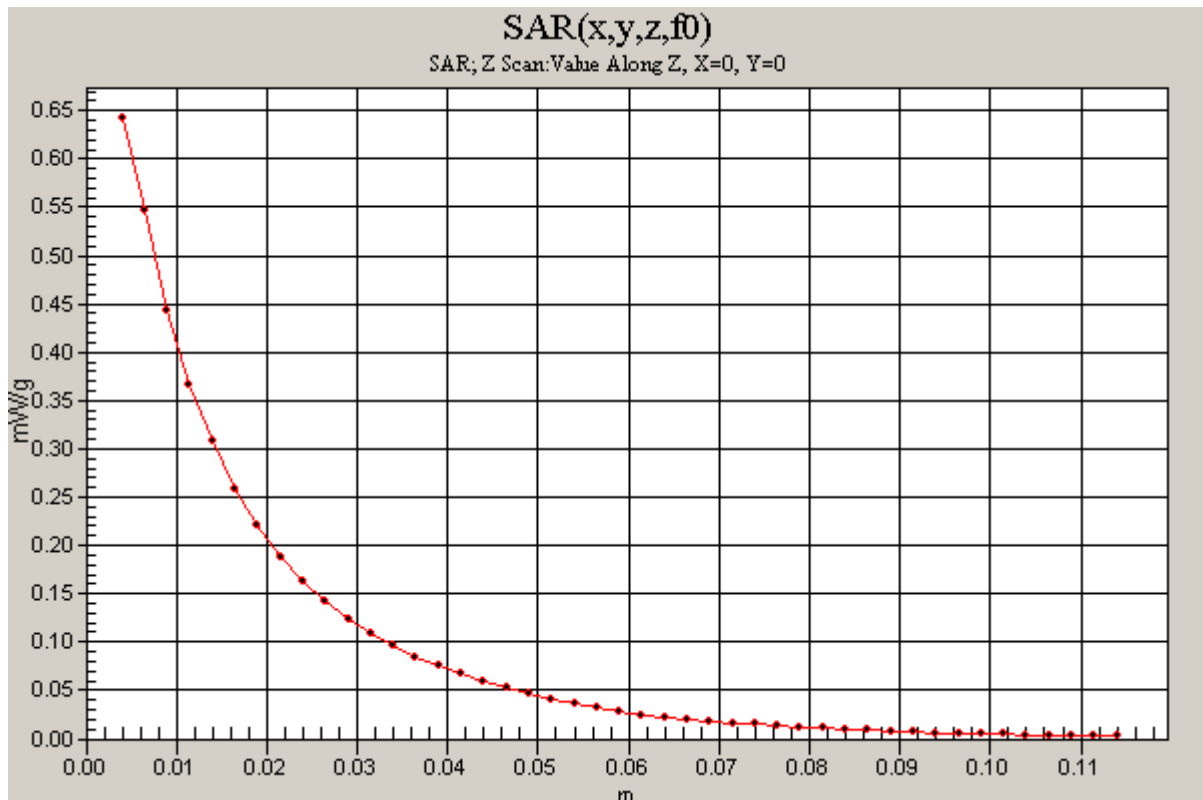
Phantom section: Right Section

Measurement Standard: DAS4 (High Precision Assessment)

DASY4 Configuration:

- Probe: ET3DV6 - SN1679; ConvF(6.69, 6.69, 6.69); Calibrated: 2007/11/15
- Sensor-Surface: 4mm (Mechanical And Optical Surface Detection)
- Electronics: DAE3 Sn328; Calibrated: 2008/03/06
- Phantom: SAM 1200; Type: QD 000 P40 CA; Serial: 1200
- Measurement SW: DAS4, V4.7 Build 44; Postprocessing SW: SEMCAD, V1.8 Build 171

**Cheek/Touch Position/Z Scan (1x1x45):** Measurement grid:  $dx=20\text{mm}$ ,  $dy=20\text{mm}$ ,  $dz=2.5\text{mm}$   
Maximum value of SAR (measured) = 0.642 mW/g





Test Laboratory: JAPAN QUALITY ASSURANCE ORGANIZATION

## Right Head, Cheek/Touch 4182ch (836.4MHz)

**DUT: Cellular Phone; Type: F-04A; Serial: 353709020001896**

Communication System: WCDMA; Frequency: 836.4 MHz; Duty Cycle: 1:1

Medium: HSL900 Medium parameters used:  $f = 836.4$  MHz;  $\sigma = 0.879$  mho/m;  $\epsilon_r = 41.5$ ;  $\rho = 1000$  kg/m<sup>3</sup>

Phantom section: Right Section

Measurement Standard: DASY4 (High Precision Assessment)

DASY4 Configuration:

- Probe: ET3DV6 - SN1679; ConvF(6.69, 6.69, 6.69); Calibrated: 2007/11/15
- Sensor-Surface: 4mm (Mechanical And Optical Surface Detection)
- Electronics: DAE3 Sn328; Calibrated: 2008/03/06
- Phantom: SAM 1200; Type: QD 000 P40 CA; Serial: 1200
- Measurement SW: DASY4, V4.7 Build 44; Postprocessing SW: SEMCAD, V1.8 Build 171

**Cheek/Touch Position/Area Scan (11x6x1):** Measurement grid: dx=15mm, dy=15mm

Maximum value of SAR (measured) = 0.556 mW/g

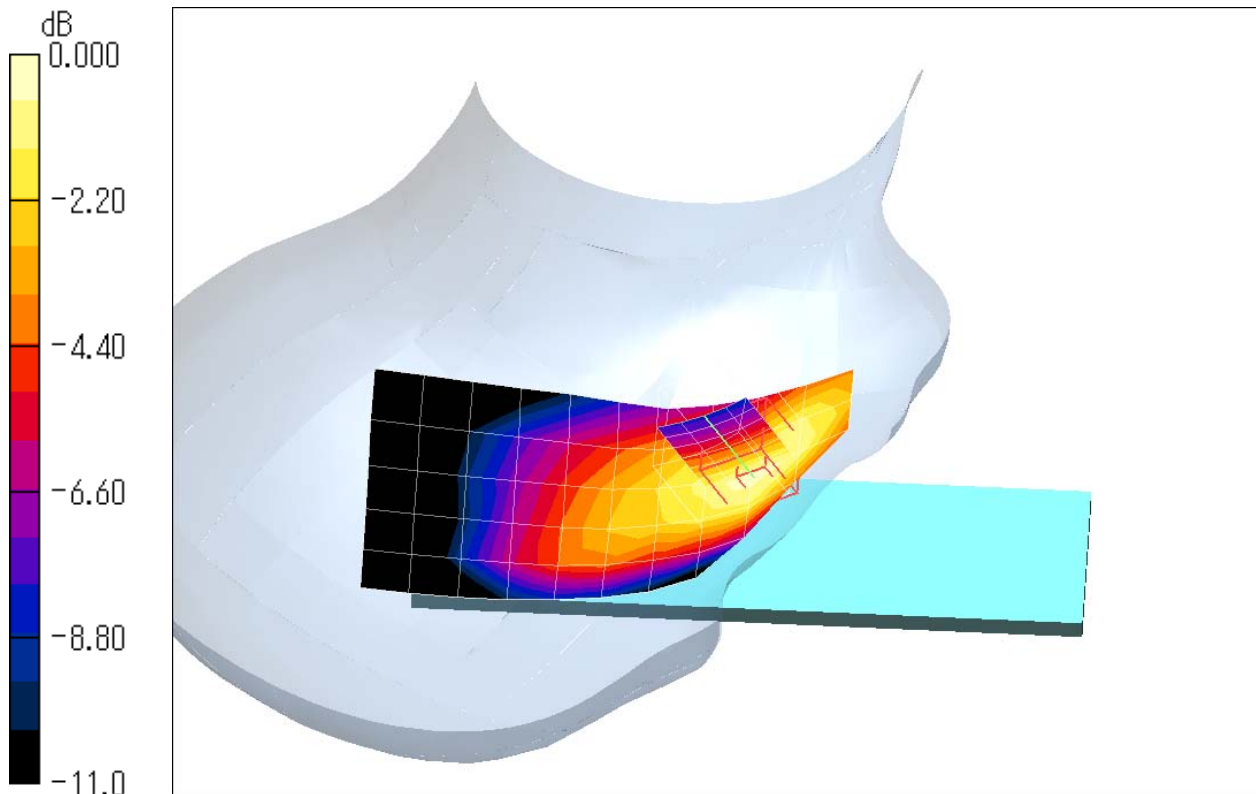
**Cheek/Touch Position/Zoom Scan (5x5x7)/Cube 0:** Measurement grid: dx=8mm, dy=8mm, dz=5mm

Reference Value = 19.7 V/m; Power Drift = -0.087 dB

Peak SAR (extrapolated) = 0.741 W/kg

**SAR(1 g) = 0.518 mW/g; SAR(10 g) = 0.345 mW/g**

Maximum value of SAR (measured) = 0.558 mW/g



0 dB = 0.558mW/g

Test Laboratory: JAPAN QUALITY ASSURANCE ORGANIZATION

## Right Head, Cheek/Touch 4233ch (846.6MHz)

**DUT: Cellular Phone; Type: F-04A; Serial: 353709020001896**

Communication System: WCDMA; Frequency: 846.6 MHz; Duty Cycle: 1:1

Medium: HSL900 Medium parameters used:  $f = 846.6$  MHz;  $\sigma = 0.879$  mho/m;  $\epsilon_r = 41.5$ ;  $\rho = 1000$  kg/m<sup>3</sup>

Phantom section: Right Section

Measurement Standard: DASY4 (High Precision Assessment)

DASY4 Configuration:

- Probe: ET3DV6 - SN1679; ConvF(6.69, 6.69, 6.69); Calibrated: 2007/11/15
- Sensor-Surface: 4mm (Mechanical And Optical Surface Detection)
- Electronics: DAE3 Sn328; Calibrated: 2008/03/06
- Phantom: SAM 1200; Type: QD 000 P40 CA; Serial: 1200
- Measurement SW: DASY4, V4.7 Build 44; Postprocessing SW: SEMCAD, V1.8 Build 171

**Cheek/Touch Position/Area Scan (11x6x1):** Measurement grid: dx=15mm, dy=15mm

Maximum value of SAR (measured) = 0.500 mW/g

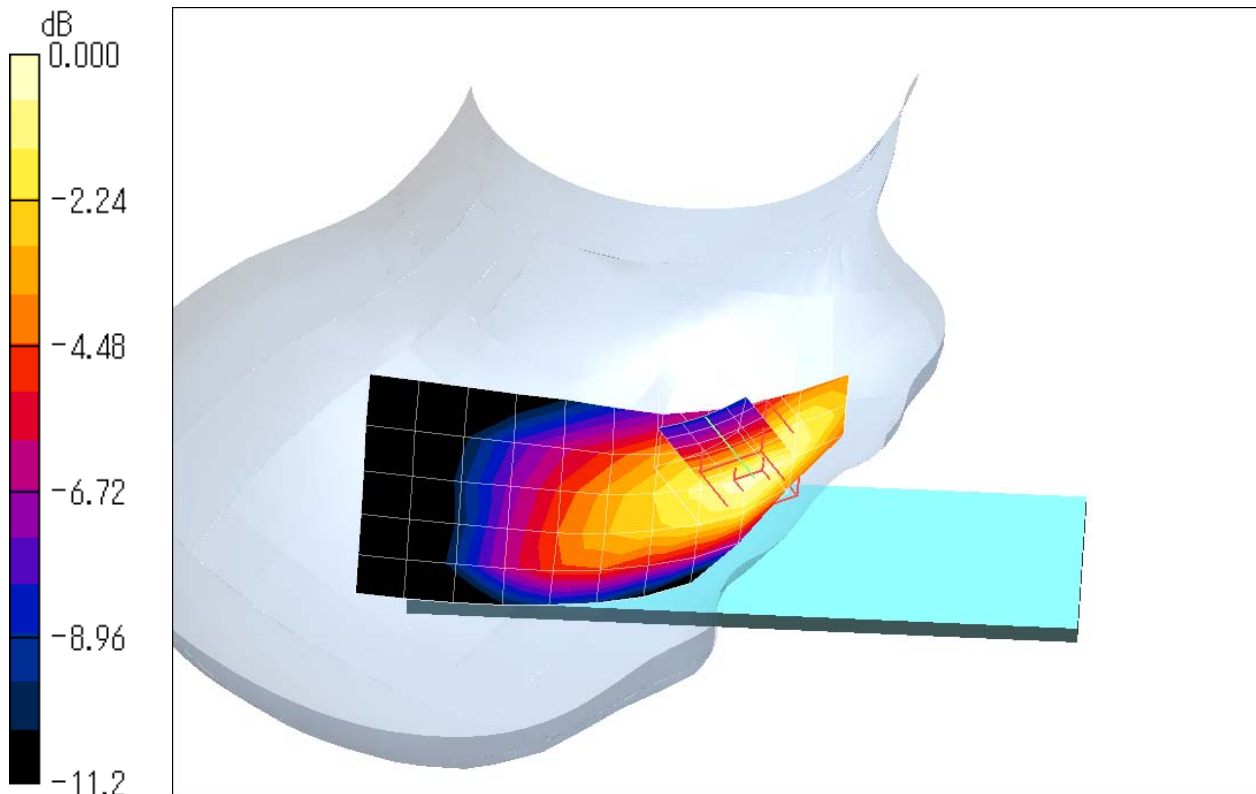
**Cheek/Touch Position/Zoom Scan (5x5x7)/Cube 0:** Measurement grid: dx=8mm, dy=8mm, dz=5mm

Reference Value = 18.5 V/m; Power Drift = -0.033 dB

Peak SAR (extrapolated) = 0.664 W/kg

**SAR(1 g) = 0.468 mW/g; SAR(10 g) = 0.310 mW/g**

Maximum value of SAR (measured) = 0.507 mW/g



0 dB = 0.507mW/g

Test Laboratory: JAPAN QUALITY ASSURANCE ORGANIZATION

## Right Head, Ear/Tilt 4182ch (836.4MHz)

**DUT: Cellular Phone; Type: F-04A; Serial: 353709020001896**

Communication System: WCDMA; Frequency: 836.4 MHz; Duty Cycle: 1:1

Medium: HSL900 Medium parameters used:  $f = 836.4 \text{ MHz}$ ;  $\sigma = 0.879 \text{ mho/m}$ ;  $\epsilon_r = 41.5$ ;  $\rho = 1000 \text{ kg/m}^3$

Phantom section: Right Section

Measurement Standard: DASY4 (High Precision Assessment)

DASY4 Configuration:

- Probe: ET3DV6 - SN1679; ConvF(6.69, 6.69, 6.69); Calibrated: 2007/11/15
- Sensor-Surface: 4mm (Mechanical And Optical Surface Detection)
- Electronics: DAE3 Sn328; Calibrated: 2008/03/06
- Phantom: SAM 1200; Type: QD 000 P40 CA; Serial: 1200
- Measurement SW: DASY4, V4.7 Build 44; Postprocessing SW: SEMCAD, V1.8 Build 171

**Ear/Tilt Position/Area Scan (11x6x1):** Measurement grid:  $dx=15\text{mm}$ ,  $dy=15\text{mm}$

Maximum value of SAR (measured) = 0.112 mW/g

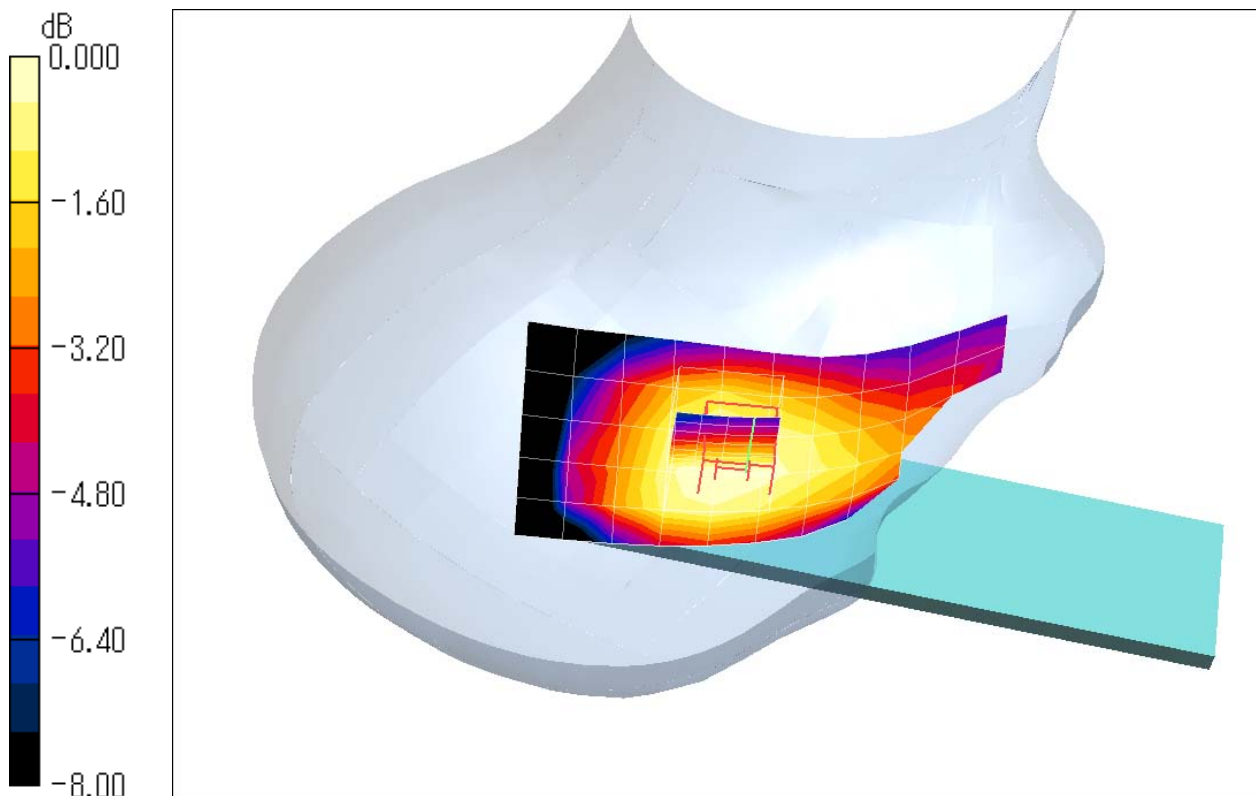
**Ear/Tilt Position/Zoom Scan (5x5x7)/Cube 0:** Measurement grid:  $dx=8\text{mm}$ ,  $dy=8\text{mm}$ ,  $dz=5\text{mm}$

Reference Value = 11.3 V/m; Power Drift = -0.052 dB

Peak SAR (extrapolated) = 0.124 W/kg

**SAR(1 g) = 0.105 mW/g; SAR(10 g) = 0.081 mW/g**

Maximum value of SAR (measured) = 0.109 mW/g



0 dB = 0.109mW/g

Test Laboratory: JAPAN QUALITY ASSURANCE ORGANIZATION

## Body-worn 4132ch (826.4MHz)

**DUT: Cellular Phone; Type: F-04A; Serial: 353709020001896**

Communication System: WCDMA; Frequency: 826.4 MHz; Duty Cycle: 1:1

Medium: M900 Medium parameters used:  $f = 826.4 \text{ MHz}$ ;  $\sigma = 0.963 \text{ mho/m}$ ;  $\epsilon_r = 54.8$ ;  $\rho = 1000 \text{ kg/m}^3$

Phantom section: Flat Section

Measurement Standard: DASY4 (High Precision Assessment)

DASY4 Configuration:

- Probe: ET3DV6 - SN1679; ConvF(6.18, 6.18, 6.18); Calibrated: 2007/11/15
- Sensor-Surface: 4mm (Mechanical And Optical Surface Detection)
- Electronics: DAE3 Sn328; Calibrated: 2008/03/06
- Phantom: SAM 1200; Type: QD 000 P40 CA; Serial: 1200
- Measurement SW: DASY4, V4.7 Build 44; Postprocessing SW: SEMCAD, V1.8 Build 171

**Body-worn/Area Scan (6x10x1):** Measurement grid: dx=15mm, dy=15mm

Maximum value of SAR (measured) = 0.524 mW/g

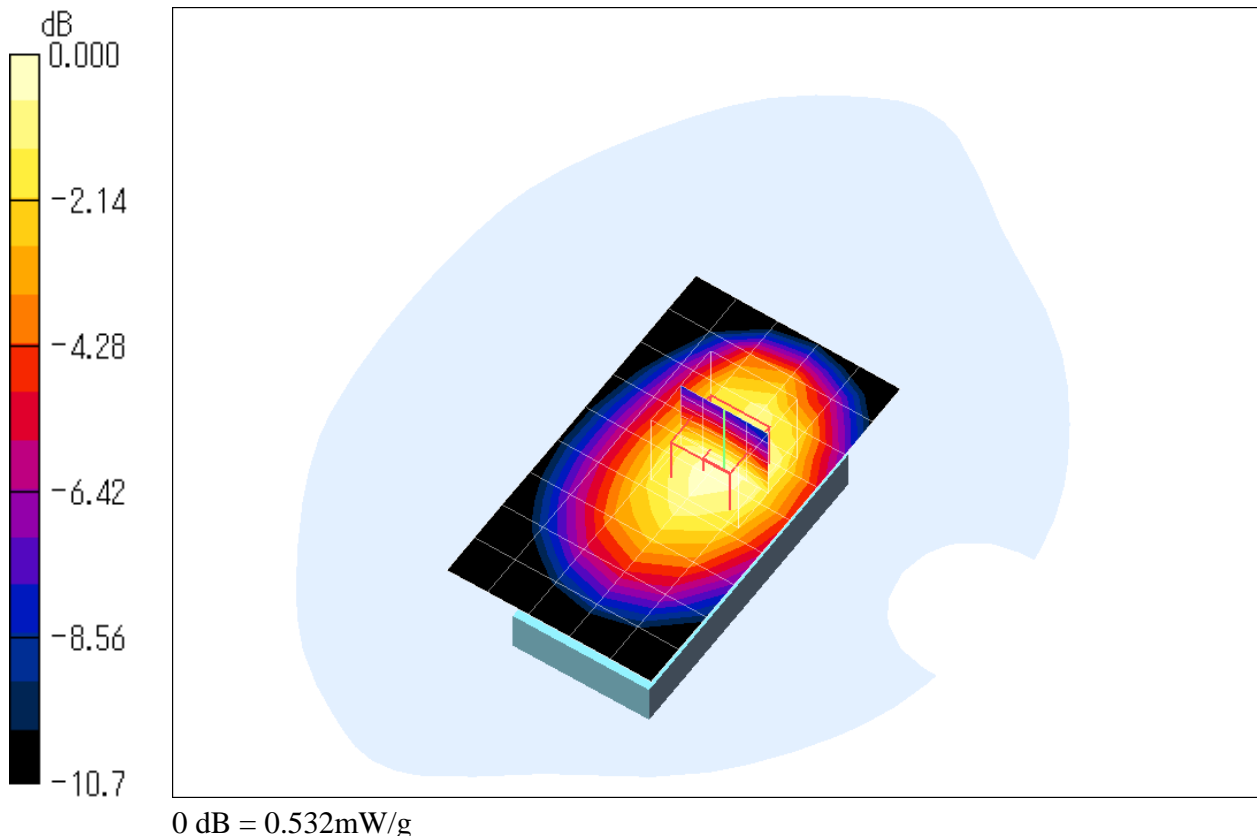
**Body-worn/Zoom Scan (5x5x7)/Cube 0:** Measurement grid: dx=8mm, dy=8mm, dz=5mm

Reference Value = 23.1 V/m; Power Drift = -0.038 dB

Peak SAR (extrapolated) = 0.635 W/kg

**SAR(1 g) = 0.498 mW/g; SAR(10 g) = 0.354 mW/g**

Maximum value of SAR (measured) = 0.532 mW/g



Test Laboratory: JAPAN QUALITY ASSURANCE ORGANIZATION

## Body-worn 4182ch (836.4MHz)

**DUT: Cellular Phone; Type: F-04A; Serial: 353709020001896**

Communication System: WCDMA; Frequency: 836.4 MHz; Duty Cycle: 1:1

Medium: M900 Medium parameters used:  $f = 836.4 \text{ MHz}$ ;  $\sigma = 0.963 \text{ mho/m}$ ;  $\epsilon_r = 54.8$ ;  $\rho = 1000 \text{ kg/m}^3$

Phantom section: Flat Section

Measurement Standard: DASY4 (High Precision Assessment)

DASY4 Configuration:

- Probe: ET3DV6 - SN1679; ConvF(6.18, 6.18, 6.18); Calibrated: 2007/11/15
- Sensor-Surface: 4mm (Mechanical And Optical Surface Detection)
- Electronics: DAE3 Sn328; Calibrated: 2008/03/06
- Phantom: SAM 1200; Type: QD 000 P40 CA; Serial: 1200
- Measurement SW: DASY4, V4.7 Build 44; Postprocessing SW: SEMCAD, V1.8 Build 171

**Body-worn/Area Scan (6x10x1):** Measurement grid: dx=15mm, dy=15mm

Maximum value of SAR (measured) = 0.600 mW/g

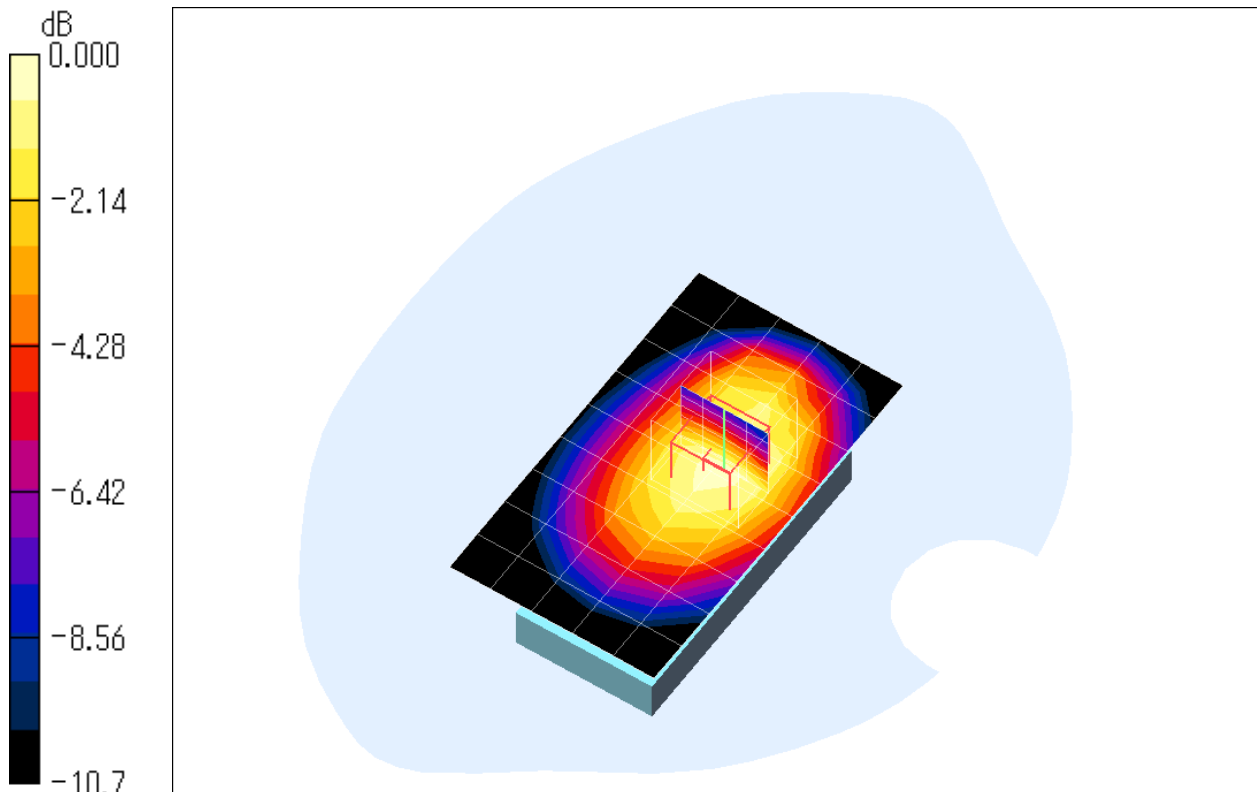
**Body-worn/Zoom Scan (5x5x7)/Cube 0:** Measurement grid: dx=8mm, dy=8mm, dz=5mm

Reference Value = 25.0 V/m; Power Drift = -0.022 dB

Peak SAR (extrapolated) = 0.745 W/kg

**SAR(1 g) = 0.588 mW/g; SAR(10 g) = 0.419 mW/g**

Maximum value of SAR (measured) = 0.628 mW/g



0 dB = 0.628mW/g

Test Laboratory: JAPAN QUALITY ASSURANCE ORGANIZATION

## Body-worn 4182ch (836.4MHz)

**DUT: Cellular Phone; Type: F-04A; Serial: 353709020001896**

Communication System: WCDMA; Frequency: 836.4 MHz; Duty Cycle: 1:1

Medium: M900 Medium parameters used:  $f = 836.4$  MHz;  $\sigma = 0.963$  mho/m;  $\epsilon_r = 54.8$ ;  $\rho = 1000$  kg/m<sup>3</sup>

Phantom section: Flat Section

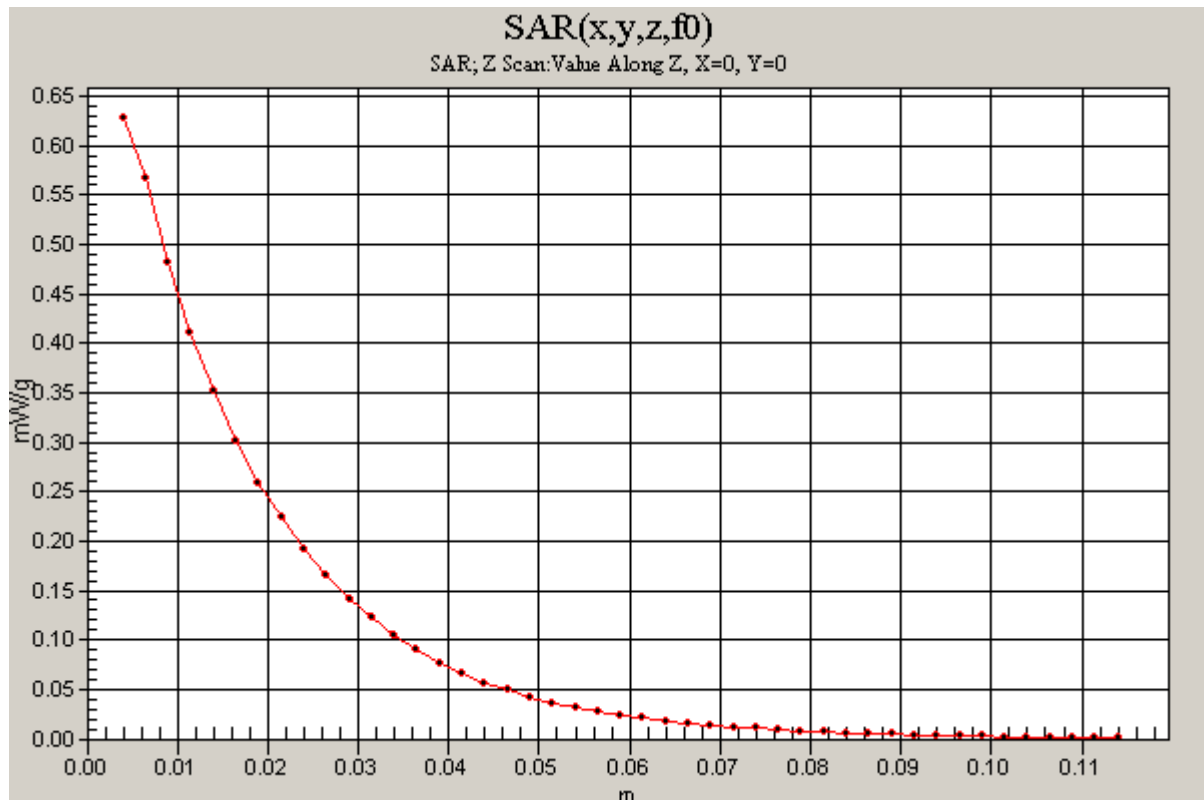
Measurement Standard: DAS4 (High Precision Assessment)

DASY4 Configuration:

- Probe: ET3DV6 - SN1679; ConvF(6.18, 6.18, 6.18); Calibrated: 2007/11/15
- Sensor-Surface: 4mm (Mechanical And Optical Surface Detection)
- Electronics: DAE3 Sn328; Calibrated: 2008/03/06
- Phantom: SAM 1200; Type: QD 000 P40 CA; Serial: 1200
- Measurement SW: DAS4, V4.7 Build 44; Postprocessing SW: SEMCAD, V1.8 Build 171

**Body-worn/Z Scan (1x1x45):** Measurement grid: dx=20mm, dy=20mm, dz=2.5mm

Maximum value of SAR (measured) = 0.628 mW/g



Test Laboratory: JAPAN QUALITY ASSURANCE ORGANIZATION

## Body-worn 4233ch (846.6MHz)

**DUT: Cellular Phone; Type: F-04A; Serial: 353709020001896**

Communication System: WCDMA; Frequency: 846.6 MHz; Duty Cycle: 1:1

Medium: M900 Medium parameters used:  $f = 846.6 \text{ MHz}$ ;  $\sigma = 0.963 \text{ mho/m}$ ;  $\epsilon_r = 54.8$ ;  $\rho = 1000 \text{ kg/m}^3$

Phantom section: Flat Section

Measurement Standard: DASY4 (High Precision Assessment)

DASY4 Configuration:

- Probe: ET3DV6 - SN1679; ConvF(6.18, 6.18, 6.18); Calibrated: 2007/11/15
- Sensor-Surface: 4mm (Mechanical And Optical Surface Detection)
- Electronics: DAE3 Sn328; Calibrated: 2008/03/06
- Phantom: SAM 1200; Type: QD 000 P40 CA; Serial: 1200
- Measurement SW: DASY4, V4.7 Build 44; Postprocessing SW: SEMCAD, V1.8 Build 171

**Body-worn/Area Scan (6x10x1):** Measurement grid:  $dx=15\text{mm}$ ,  $dy=15\text{mm}$

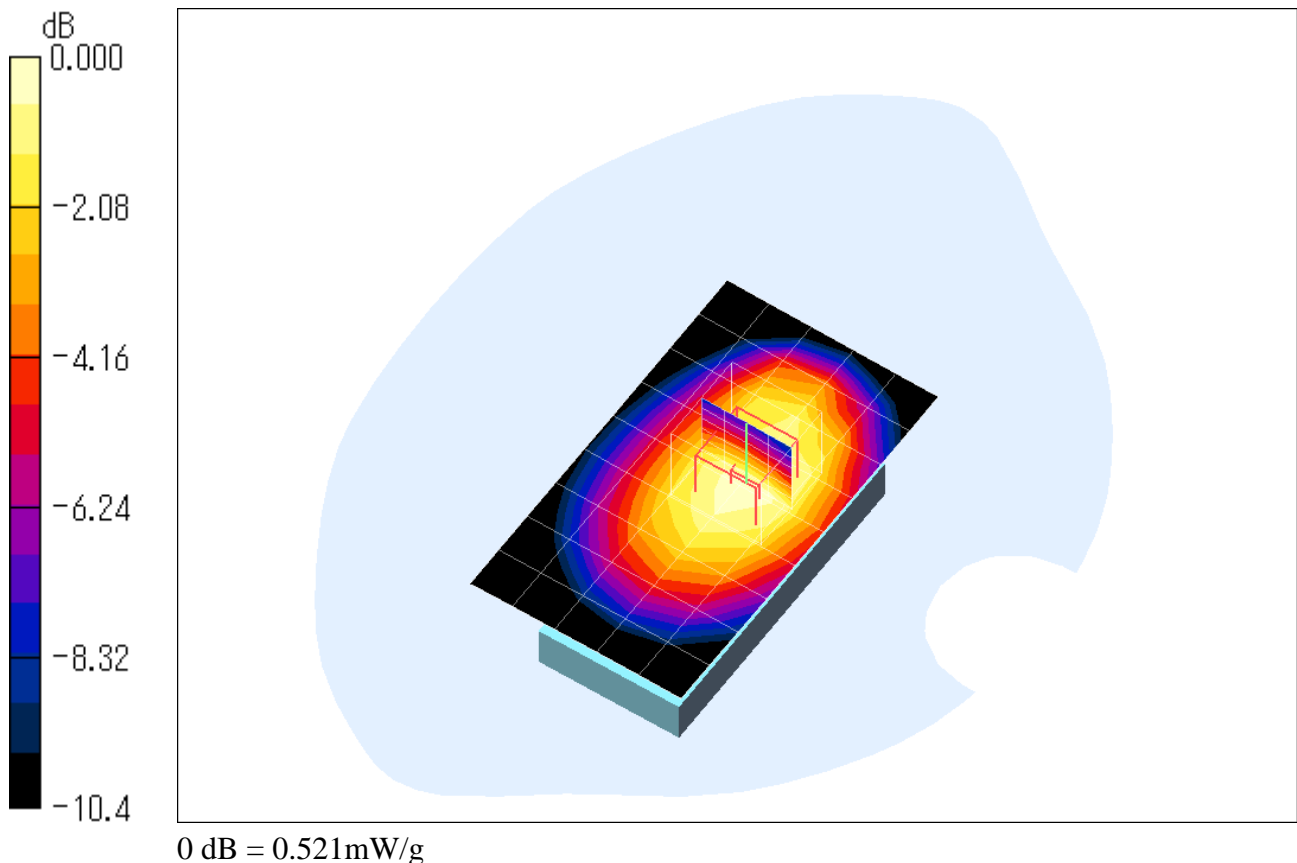
Maximum value of SAR (measured) = 0.521 mW/g

**Body-worn/Zoom Scan (5x5x7)/Cube 0:** Measurement grid:  $dx=8\text{mm}$ ,  $dy=8\text{mm}$ ,  $dz=5\text{mm}$

Reference Value = 23.2 V/m; Power Drift = -0.048 dB

Peak SAR (extrapolated) = 0.624 W/kg

**SAR(1 g) = 0.493 mW/g; SAR(10 g) = 0.353 mW/g**





**Attachment 3 – Dosimetric E-Field Probe – ET3DV6, S/N: 1679 Calibration Data**





Accredited by the Swiss Accreditation Service (SAS)  
The Swiss Accreditation Service is one of the signatories to the EA  
Multilateral Agreement for the recognition of calibration certificates

Accreditation No.: **SCS 108**

Client **JQA (MTT)**

Certificate No: **ET3-1679\_Nov07**

**CALIBRATION CERTIFICATE**

Object **ET3DV6 - SN:1679**

Calibration procedure(s) **QA CAL-01.v6  
Calibration procedure for dosimetric E-field probes**

Calibration date: **November 15, 2007**

Condition of the calibrated item **In Tolerance**

This calibration certificate documents the traceability to national standards, which realize the physical units of measurements (SI).  
The measurements and the uncertainties with confidence probability are given on the following pages and are part of the certificate.

All calibrations have been conducted in the closed laboratory facility: environment temperature (22 ± 3)°C and humidity < 70%.

Calibration Equipment used (M&TE critical for calibration)

Primary Standards	ID #	Cal Date (Calibrated by, Certificate No.)	Scheduled Calibration
Power meter E4419B	GB41293874	29-Mar-07 (METAS, No. 217-00670)	Mar-08
Power sensor E4412A	MY41495277	29-Mar-07 (METAS, No. 217-00670)	Mar-08
Power sensor E4412A	MY41498087	29-Mar-07 (METAS, No. 217-00670)	Mar-08
Reference 3 dB Attenuator	SN: S5054 (3c)	8-Aug-07 (METAS, No. 217-00719)	Aug-08
Reference 20 dB Attenuator	SN: S5086 (20b)	29-Mar-07 (METAS, No. 217-00671)	Mar-08
Reference 30 dB Attenuator	SN: S5129 (30b)	8-Aug-07 (METAS, No. 217-00720)	Aug-08
Reference Probe ES3DV2	SN: 3013	4-Jan-07 (SPEAG, No. ES3-3013_Jan07)	Jan-08
DAE4	SN: 654	20-Apr-07 (SPEAG, No. DAE4-654_Apr07)	Apr-08
Secondary Standards	ID #	Check Date (in house)	Scheduled Check
RF generator HP 8648C	US3642U01700	4-Aug-99 (SPEAG, in house check Oct-07)	In house check: Oct-09
Network Analyzer HP 8753E	US37390585	18-Oct-01 (SPEAG, in house check Oct-07)	In house check: Oct-08

	Name	Function	Signature
Calibrated by:	Katja Pokovic	Technical Manager	
Approved by:	Niels Kuster	Quality Manager	

Issued: November 15, 2007

This calibration certificate shall not be reproduced except in full without written approval of the laboratory.



Accredited by the Swiss Accreditation Service (SAS)  
The Swiss Accreditation Service is one of the signatories to the EA  
Multilateral Agreement for the recognition of calibration certificates

Accreditation No.: **SCS 108**

### Glossary:

TSL	tissue simulating liquid
NORM <sub>x,y,z</sub>	sensitivity in free space
ConF	sensitivity in TSL / NORM <sub>x,y,z</sub>
DCP	diode compression point
Polarization $\varphi$	$\varphi$ rotation around probe axis
Polarization $\vartheta$	$\vartheta$ rotation around an axis that is in the plane normal to probe axis (at measurement center), i.e., $\vartheta = 0$ is normal to probe axis

### Calibration is Performed According to the Following Standards:

- IEEE Std 1528-2003, "IEEE Recommended Practice for Determining the Peak Spatial-Averaged Specific Absorption Rate (SAR) in the Human Head from Wireless Communications Devices: Measurement Techniques", December 2003
- IEC 62209-1, "Procedure to measure the Specific Absorption Rate (SAR) for hand-held devices used in close proximity to the ear (frequency range of 300 MHz to 3 GHz)", February 2005

### Methods Applied and Interpretation of Parameters:

- NORM<sub>x,y,z</sub>**: Assessed for E-field polarization  $\vartheta = 0$  ( $f \leq 900$  MHz in TEM-cell;  $f > 1800$  MHz: R22 waveguide). NORM<sub>x,y,z</sub> are only intermediate values, i.e., the uncertainties of NORM<sub>x,y,z</sub> does not effect the E<sup>2</sup>-field uncertainty inside TSL (see below *ConvF*).
- NORM(f)<sub>x,y,z</sub>** = NORM<sub>x,y,z</sub> \* *frequency\_response* (see Frequency Response Chart). This linearization is implemented in DASY4 software versions later than 4.2. The uncertainty of the frequency response is included in the stated uncertainty of *ConvF*.
- DCP<sub>x,y,z</sub>**: DCP are numerical linearization parameters assessed based on the data of power sweep (no uncertainty required). DCP does not depend on frequency nor media.
- ConvF and Boundary Effect Parameters**: Assessed in flat phantom using E-field (or Temperature Transfer Standard for  $f \leq 800$  MHz) and inside waveguide using analytical field distributions based on power measurements for  $f > 800$  MHz. The same setups are used for assessment of the parameters applied for boundary compensation (alpha, depth) of which typical uncertainty values are given. These parameters are used in DASY4 software to improve probe accuracy close to the boundary. The sensitivity in TSL corresponds to NORM<sub>x,y,z</sub> \* *ConvF* whereby the uncertainty corresponds to that given for *ConvF*. A frequency dependent *ConvF* is used in DASY version 4.4 and higher which allows extending the validity from  $\pm 50$  MHz to  $\pm 100$  MHz.
- Spherical isotropy (3D deviation from isotropy)**: in a field of low gradients realized using a flat phantom exposed by a patch antenna.
- Sensor Offset**: The sensor offset corresponds to the offset of virtual measurement center from the probe tip (on probe axis). No tolerance required.

# Probe ET3DV6

## SN:1679

Manufactured:	May 7, 2002
Last calibrated:	November 16, 2006
Recalibrated:	November 15, 2007

**Calibrated for DASY Systems**

(Note: non-compatible with DASY2 system!)

**DASY - Parameters of Probe: ET3DV6 SN:1679****Sensitivity in Free Space<sup>A</sup>****Diode Compression<sup>B</sup>**

NormX	1.91 ± 10.1%	$\mu\text{V}/(\text{V}/\text{m})^2$	DCP X	93 mV
NormY	1.86 ± 10.1%	$\mu\text{V}/(\text{V}/\text{m})^2$	DCP Y	93 mV
NormZ	1.90 ± 10.1%	$\mu\text{V}/(\text{V}/\text{m})^2$	DCP Z	93 mV

**Sensitivity in Tissue Simulating Liquid (Conversion Factors)**

Please see Page 8.

**Boundary Effect****TSL                    900 MHz      Typical SAR gradient: 5 % per mm**

Sensor Center to Phantom Surface Distance		<b>3.7 mm</b>	<b>4.7 mm</b>
SAR <sub>be</sub> [%]	Without Correction Algorithm	10.7	6.6
SAR <sub>be</sub> [%]	With Correction Algorithm	0.8	0.2

**TSL                    1810 MHz      Typical SAR gradient: 10 % per mm**

Sensor Center to Phantom Surface Distance		<b>3.7 mm</b>	<b>4.7 mm</b>
SAR <sub>be</sub> [%]	Without Correction Algorithm	11.1	7.3
SAR <sub>be</sub> [%]	With Correction Algorithm	0.3	0.6

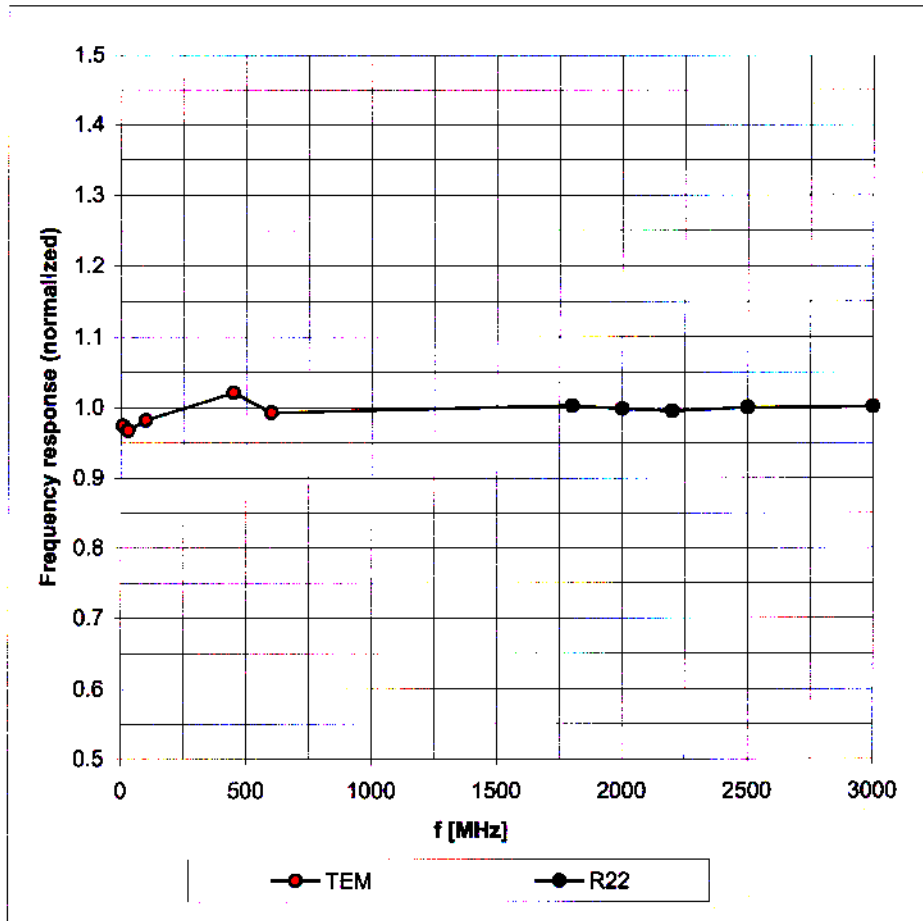
**Sensor Offset**Probe Tip to Sensor Center                    **2.7 mm**

**The reported uncertainty of measurement is stated as the standard uncertainty of measurement multiplied by the coverage factor k=2, which for a normal distribution corresponds to a coverage probability of approximately 95%.**

<sup>A</sup> The uncertainties of NormX,Y,Z do not affect the E<sup>2</sup>-field uncertainty inside TSL (see Page 8).<sup>B</sup> Numerical linearization parameter: uncertainty not required.

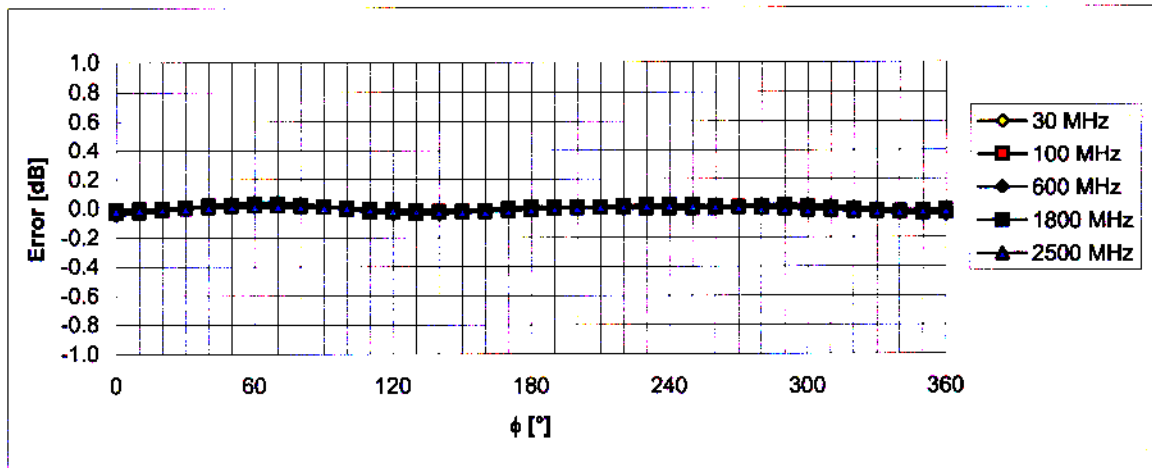
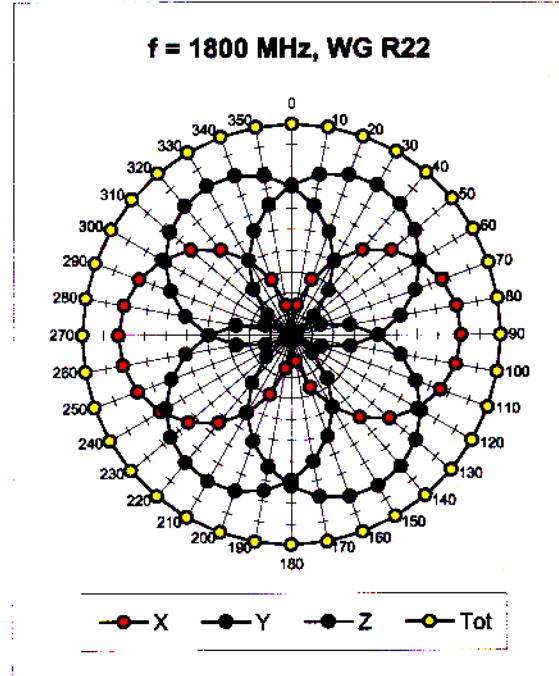
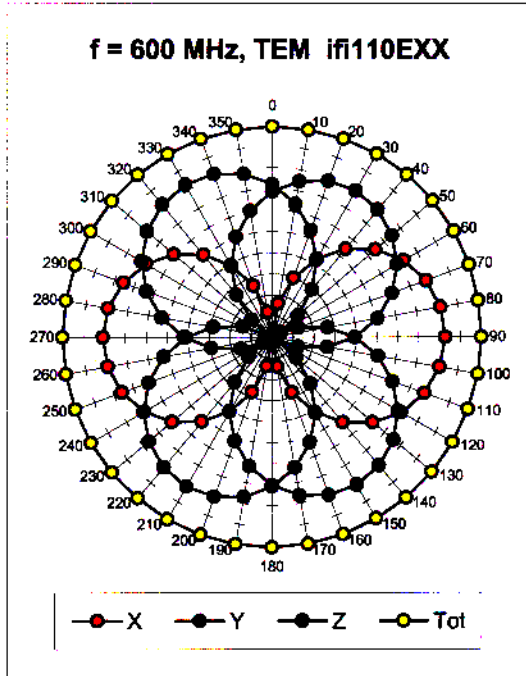
# Frequency Response of E-Field

(TEM-Cell:ifi110 EXX, Waveguide: R22)



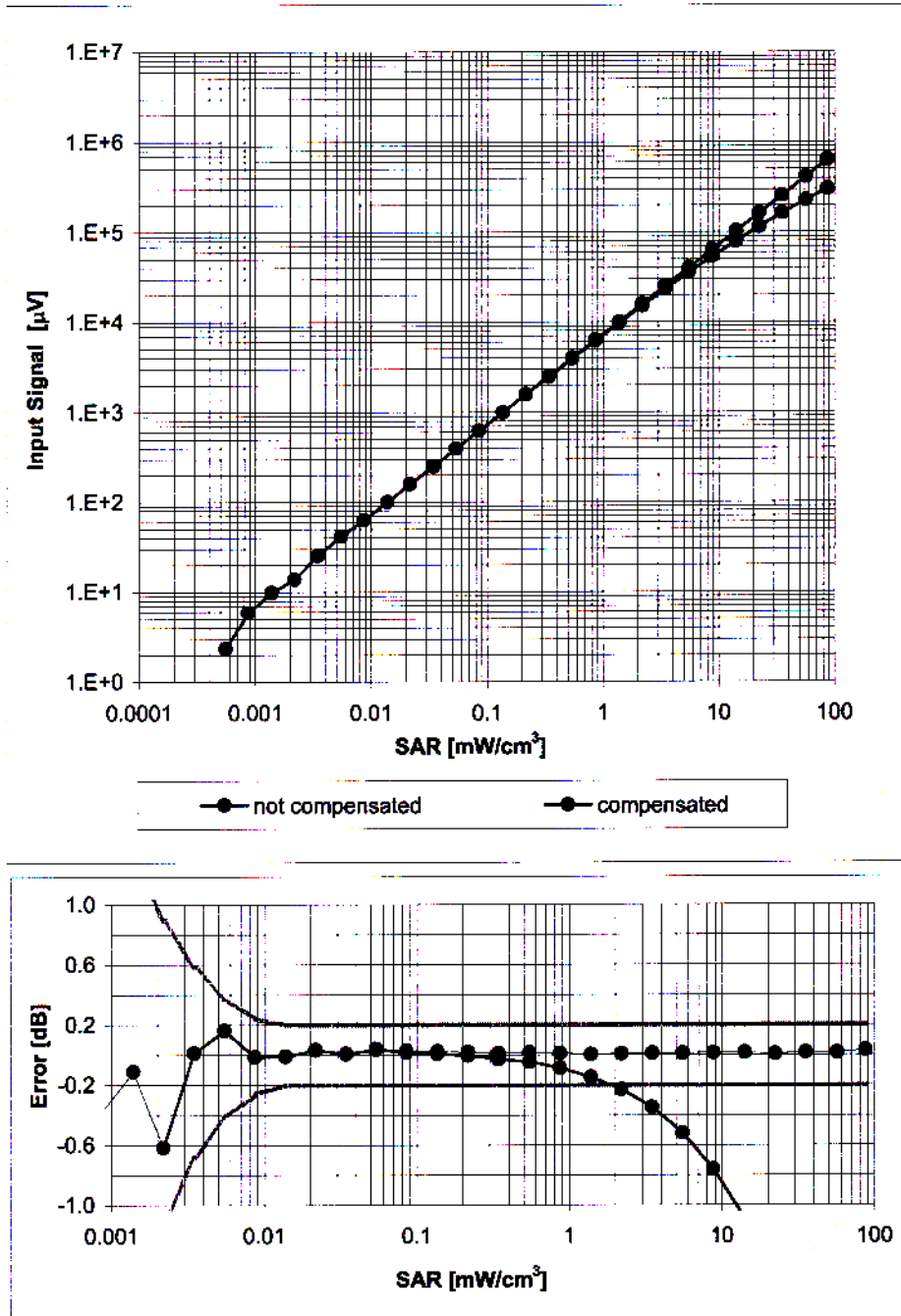
Uncertainty of Frequency Response of E-field:  $\pm 6.3\%$  ( $k=2$ )

### Receiving Pattern ( $\phi$ ), $\vartheta = 0^\circ$



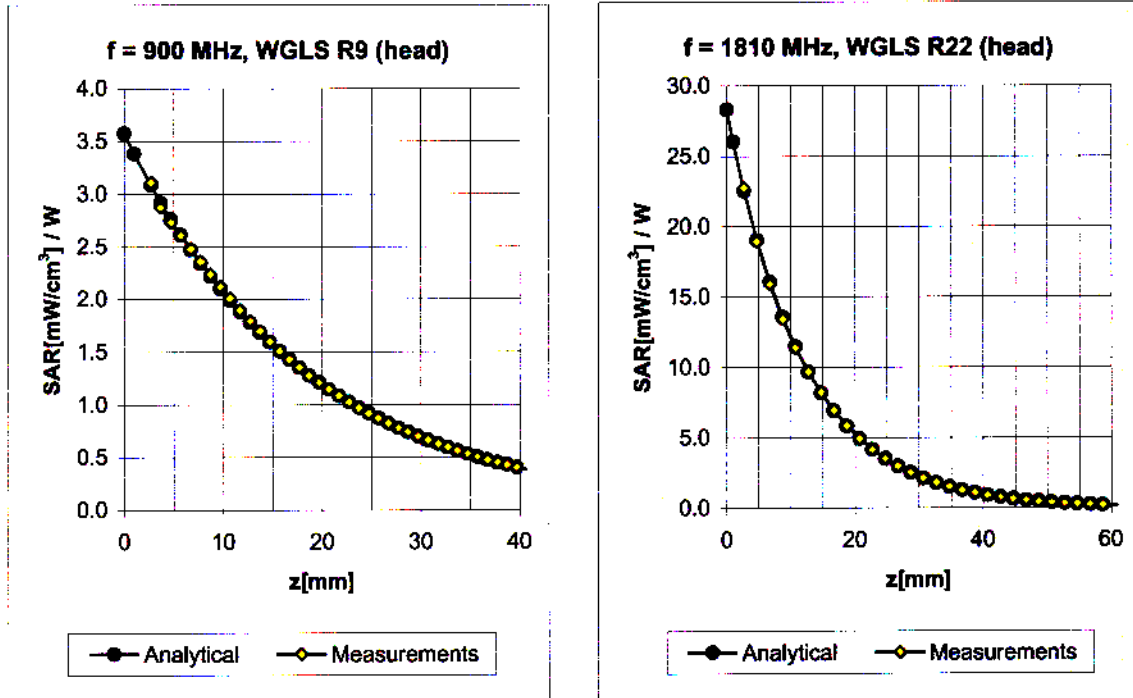
Uncertainty of Axial Isotropy Assessment:  $\pm 0.5\%$  ( $k=2$ )

## Dynamic Range f(SAR<sub>head</sub>) (Waveguide R22, f = 1800 MHz)



Uncertainty of Linearity Assessment: ± 0.6% (k=2)

## Conversion Factor Assessment



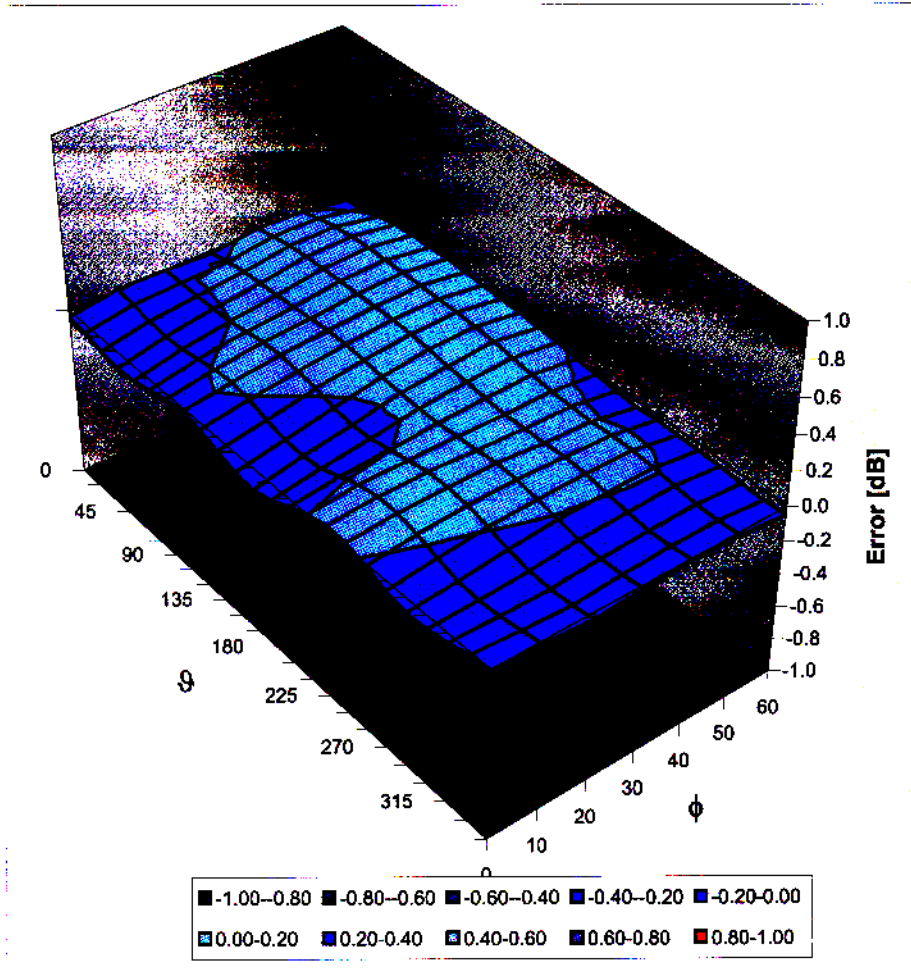
f [MHz]	Validity [MHz] <sup>c</sup>	TSL	Permittivity	Conductivity	Alpha	Depth	ConvF Uncertainty
900	± 50 / ± 100	Head	41.5 ± 5%	0.97 ± 5%	0.56	2.28	6.69 ± 11.0% (k=2)
1810	± 50 / ± 100	Head	40.0 ± 5%	1.40 ± 5%	0.60	2.09	5.36 ± 11.0% (k=2)
1950	± 50 / ± 100	Head	40.0 ± 5%	1.40 ± 5%	0.63	2.09	5.06 ± 11.0% (k=2)
2450	± 50 / ± 100	Head	39.2 ± 5%	1.80 ± 5%	0.63	2.30	4.72 ± 11.8% (k=2)
900	± 50 / ± 100	Body	55.0 ± 5%	1.05 ± 5%	0.64	2.11	6.18 ± 11.0% (k=2)
1810	± 50 / ± 100	Body	53.3 ± 5%	1.52 ± 5%	0.56	2.70	4.80 ± 11.0% (k=2)
1950	± 50 / ± 100	Body	53.3 ± 5%	1.52 ± 5%	0.57	2.54	4.51 ± 11.0% (k=2)
2450	± 50 / ± 100	Body	52.7 ± 5%	1.95 ± 5%	0.62	2.35	4.09 ± 11.8% (k=2)

<sup>c</sup> The validity of ± 100 MHz only applies for DASY v4.4 and higher (see Page 2). The uncertainty is the RSS of the ConvF uncertainty at calibration frequency and the uncertainty for the indicated frequency band.



### Deviation from Isotropy in HSL

Error ( $\phi, \vartheta$ ),  $f = 900$  MHz



Uncertainty of Spherical Isotropy Assessment:  $\pm 2.6\%$  ( $k=2$ )



**Attachment 4 – System Validation Dipole – D900V2, S/N: 153 Calibration Data**



Accredited by the Swiss Accreditation Service (SAS)  
The Swiss Accreditation Service is one of the signatories to the EA  
Multilateral Agreement for the recognition of calibration certificates

Accreditation No.: **SCS 108**

Client **JQA (MTT)**

Certificate No: **D900V2-153\_Nov07**

## CALIBRATION CERTIFICATE

Object **D900V2 - SN: 153**

Calibration procedure(s) **QA CAL-05.v7  
Calibration procedure for dipole validation kits**

Calibration date: **November 12, 2007**

Condition of the calibrated item **In Tolerance**

This calibration certificate documents the traceability to national standards, which realize the physical units of measurements (SI).  
The measurements and the uncertainties with confidence probability are given on the following pages and are part of the certificate.

All calibrations have been conducted in the closed laboratory facility: environment temperature ( $22 \pm 3$ )°C and humidity < 70%.

Calibration Equipment used (M&TE critical for calibration)

Primary Standards	ID #	Cal Date (Calibrated by, Certificate No.)	Scheduled Calibration
Power meter EPM-442A	GB37480704	04-Oct-07 (METAS, No. 217-00736)	Oct-08
Power sensor HP 8481A	US37292783	04-Oct-07 (METAS, No. 217-00736)	Oct-08
Reference 20 dB Attenuator	SN: 5086 (20g)	07-Aug-07 (METAS, No 217-00718)	Aug-08
Reference 10 dB Attenuator	SN: 5047.2 (10r)	07-Aug-07 (METAS, No 217-00718)	Aug-08
Reference Probe ET3DV6 (HF)	SN 1507	26-Oct-07 (SPEAG, No. ET3-1507_Oct07)	Oct-08
DAE4	SN 601	30-Jan-07 (SPEAG, No. DAE4-601_Jan07)	Jan-08

Secondary Standards	ID #	Check Date (in house)	Scheduled Check
Power sensor HP 8481A	MY41092317	18-Oct-02 (SPEAG, in house check Oct-07)	In house check: Oct-09
RF generator R&S SMT-06	100005	04-Aug-99 (SPEAG, in house check Oct-07)	In house check: Oct-09
Network Analyzer HP 8753E	US37390585 S4206	18-Oct-01 (SPEAG, in house check Oct-07)	In house check: Oct-08

	Name	Function	Signature
Calibrated by:	Mike Meili	Laboratory Technician	

Approved by:	Katja Pokovic	Technical Manager	
--------------	---------------	-------------------	--

Issued: November 14, 2007

This calibration certificate shall not be reproduced except in full without written approval of the laboratory.



Accredited by the Swiss Accreditation Service (SAS)  
The Swiss Accreditation Service is one of the signatories to the EA  
Multilateral Agreement for the recognition of calibration certificates

Accreditation No.: **SCS 108**

### Glossary:

TSL	tissue simulating liquid
ConvF	sensitivity in TSL / NORM x,y,z
N/A	not applicable or not measured

### Calibration is Performed According to the Following Standards:

- IEEE Std 1528-2003, "IEEE Recommended Practice for Determining the Peak Spatial-Averaged Specific Absorption Rate (SAR) in the Human Head from Wireless Communications Devices: Measurement Techniques", December 2003
- IEC 62209-1, "Procedure to measure the Specific Absorption Rate (SAR) for hand-held devices used in close proximity to the ear (frequency range of 300 MHz to 3 GHz)", February 2005
- Federal Communications Commission Office of Engineering & Technology (FCC OET), "Evaluating Compliance with FCC Guidelines for Human Exposure to Radiofrequency Electromagnetic Fields; Additional Information for Evaluating Compliance of Mobile and Portable Devices with FCC Limits for Human Exposure to Radiofrequency Emissions", Supplement C (Edition 01-01) to Bulletin 65

### Additional Documentation:

- DASY4 System Handbook

### Methods Applied and Interpretation of Parameters:

- Measurement Conditions:** Further details are available from the Validation Report at the end of the certificate. All figures stated in the certificate are valid at the frequency indicated.
- Antenna Parameters with TSL:** The dipole is mounted with the spacer to position its feed point exactly below the center marking of the flat phantom section, with the arms oriented parallel to the body axis.
- Feed Point Impedance and Return Loss:** These parameters are measured with the dipole positioned under the liquid filled phantom. The impedance stated is transformed from the measurement at the SMA connector to the feed point. The Return Loss ensures low reflected power. No uncertainty required.
- Electrical Delay:** One-way delay between the SMA connector and the antenna feed point. No uncertainty required.
- SAR measured:** SAR measured at the stated antenna input power.
- SAR normalized:** SAR as measured, normalized to an input power of 1 W at the antenna connector.
- SAR for nominal TSL parameters:** The measured TSL parameters are used to calculate the nominal SAR result.

## Measurement Conditions

DASY system configuration, as far as not given on page 1.

<b>DASY Version</b>	DASY4	V4.7
<b>Extrapolation</b>	Advanced Extrapolation	
<b>Phantom</b>	Modular Flat Phantom V4.9	
<b>Distance Dipole Center - TSL</b>	15 mm	with Spacer
<b>Zoom Scan Resolution</b>	dx, dy, dz = 5 mm	
<b>Frequency</b>	900 MHz $\pm$ 1 MHz	

## Head TSL parameters

The following parameters and calculations were applied.

	Temperature	Permittivity	Conductivity
<b>Nominal Head TSL parameters</b>	22.0 °C	41.5	0.97 mho/m
<b>Measured Head TSL parameters</b>	(22.0 $\pm$ 0.2) °C	39.6 $\pm$ 6 %	0.94 mho/m $\pm$ 6 %
<b>Head TSL temperature during test</b>	(21.3 $\pm$ 0.2) °C	---	---

## SAR result with Head TSL

<b>SAR averaged over 1 cm<sup>3</sup> (1 g) of Head TSL</b>	Condition	
SAR measured	250 mW input power	2.76 mW / g
SAR normalized	normalized to 1W	11.0 mW / g
SAR for nominal Head TSL parameters <sup>1</sup>	normalized to 1W	<b>10.9 mW / g <math>\pm</math> 17.0 % (k=2)</b>

<b>SAR averaged over 10 cm<sup>3</sup> (10 g) of Head TSL</b>	condition	
SAR measured	250 mW input power	1.77 mW / g
SAR normalized	normalized to 1W	7.08 mW / g
SAR for nominal Head TSL parameters <sup>1</sup>	normalized to 1W	<b>7.00 mW / g <math>\pm</math> 16.5 % (k=2)</b>

<sup>1</sup> Correction to nominal TSL parameters according to d), chapter "SAR Sensitivities"

## Body TSL parameters

The following parameters and calculations were applied.

	Temperature	Permittivity	Conductivity
Nominal Body TSL parameters	22.0 °C	55.0	1.05 mho/m
Measured Body TSL parameters	(22.0 ± 0.2) °C	54.3 ± 6 %	1.06 mho/m ± 6 %
Body TSL temperature during test	(21.6 ± 0.2) °C	—	—

## SAR result with Body TSL

SAR averaged over 1 cm <sup>3</sup> (1 g) of Body TSL	Condition	
SAR measured	250 mW input power	2.81 mW / g
SAR normalized	normalized to 1W	11.2 mW / g
SAR for nominal Body TSL parameters <sup>2</sup>	normalized to 1W	<b>11.1 mW / g ± 17.0 % (k=2)</b>

SAR averaged over 10 cm <sup>3</sup> (10 g) of Body TSL	condition	
SAR measured	250 mW input power	1.82 mW / g
SAR normalized	normalized to 1W	7.28 mW / g
SAR for nominal Body TSL parameters <sup>2</sup>	normalized to 1W	<b>7.21 mW / g ± 16.5 % (k=2)</b>

<sup>2</sup> Correction to nominal TSL parameters according to d), chapter "SAR Sensitivities"

## Appendix

### Antenna Parameters with Head TSL

Impedance, transformed to feed point	49.1 $\Omega$ - 7.1 j $\Omega$
Return Loss	- 22.8 dB

### Antenna Parameters with Body TSL

Impedance, transformed to feed point	45.0 $\Omega$ - 8.7 j $\Omega$
Return Loss	- 19.6 dB

### General Antenna Parameters and Design

Electrical Delay (one direction)	1.393 ns
----------------------------------	----------

After long term use with 100W radiated power, only a slight warming of the dipole near the feedpoint can be measured.

The dipole is made of standard semirigid coaxial cable. The center conductor of the feeding line is directly connected to the second arm of the dipole. The antenna is therefore short-circuited for DC-signals.

No excessive force must be applied to the dipole arms, because they might bend or the soldered connections near the feedpoint may be damaged.

### Additional EUT Data

Manufactured by	SPEAG
Manufactured on	March 1, 2002

## DASY4 Validation Report for Head TSL

Date/Time: 07.11.2007 15:53:46

Test Laboratory: SPEAG, Zurich, Switzerland

**DUT: Dipole 900 MHz; Type: D900V2; Serial: D900V2 - SN:153**

Communication System: CW; Frequency: 900 MHz; Duty Cycle: 1:1

Medium: HSL 900 MHz;

Medium parameters used:  $f = 900$  MHz;  $\sigma = 0.939$  mho/m;  $\epsilon_r = 39.4$ ;  $\rho = 1000$  kg/m<sup>3</sup>

Phantom section: Flat Section

Measurement Standard: DASY4 (High Precision Assessment)

DASY4 Configuration:

- Probe: ET3DV6 - SN1507 (HF); ConvF(5.93, 5.93, 5.93); Calibrated: 26.10.2007
- Sensor-Surface: 4mm (Mechanical Surface Detection)
- Electronics: DAE4 Sn601; Calibrated: 30.01.2007
- Phantom: Flat Phantom 4.9L; Type: QD000P49AA
- Measurement SW: DASY4, V4.7 Build 55; Postprocessing SW: SEMCAD, V1.8 Build 172

**Pin = 250 mW; d = 15 mm/Zoom Scan (7x7x7)/Cube 0:**

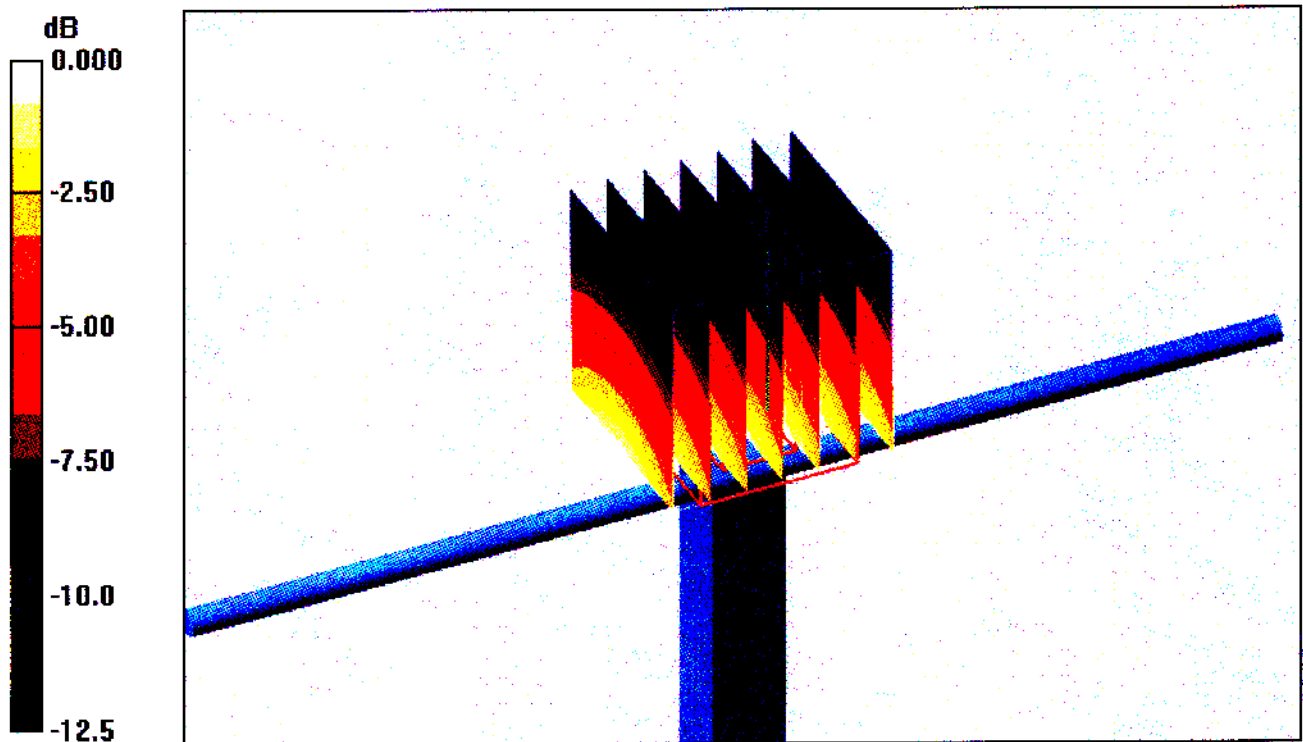
Measurement grid: dx=5mm, dy=5mm, dz=5mm

Reference Value = 58.4 V/m; Power Drift = 0.031 dB

Peak SAR (extrapolated) = 4.14 W/kg

**SAR(1 g) = 2.76 mW/g; SAR(10 g) = 1.77 mW/g**

Maximum value of SAR (measured) = 3.01 mW/g



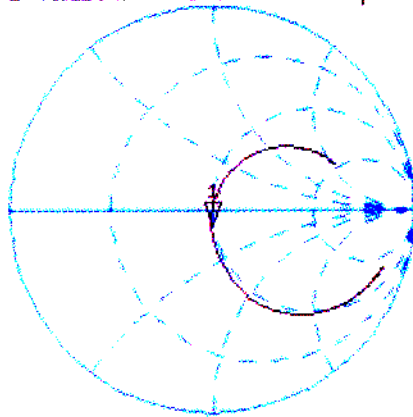
0 dB = 3.01mW/g



# Impedance Measurement Plot for Head TSL

7 Nov 2007 14:31:01  
[CH1] S11 1 U FS 1: 49.129  $\Omega$  -7.1406  $\Omega$  24.765 pF 900.000 000 MHz

\*  
Del  
Cor



Avg  
16

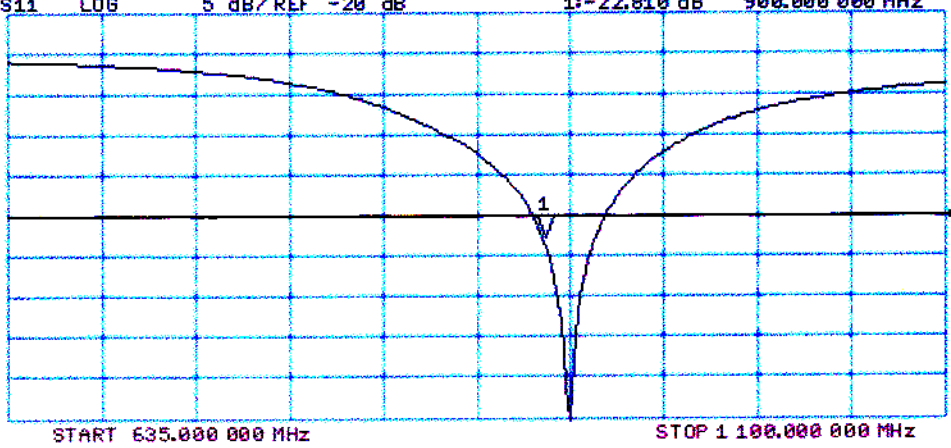
↑

CH2 S11 LOG 5 dB/REF -20 dB 1:-22.810 dB 900.000 000 MHz

Cor

Avg  
16

↑



# DASY4 Validation Report for Body TSL

Date/Time: 12.11.2007 14:43:14

Test Laboratory: SPEAG, Zurich, Switzerland

**DUT: Dipole 900 MHz; Type: D900V2; Serial: D900V2 - SN:153**

Communication System: CW; Frequency: 900 MHz; Duty Cycle: 1:1

Medium: MSL900;

Medium parameters used:  $f = 900 \text{ MHz}$ ;  $\sigma = 1.06 \text{ mho/m}$ ;  $\epsilon_r = 54.3$ ;  $\rho = 1000 \text{ kg/m}^3$

Phantom section: Flat Section

Measurement Standard: DASY4 (High Precision Assessment)

## DASY4 Configuration:

- Probe: ET3DV6 - SN1507 (HF); ConvF(5.57, 5.57, 5.57); Calibrated: 26.10.2007
- Sensor-Surface: 4mm (Mechanical Surface Detection)
- Electronics: DAE4 Sn601; Calibrated: 30.01.2007
- Phantom: Flat Phantom 4.9L; Type: QD000P49AA
- Measurement SW: DASY4, V4.7 Build 55; Postprocessing SW: SEMCAD, V1.8 Build 172

## Pin=250mW/Zoom Scan (7x7x7)/Cube 0:

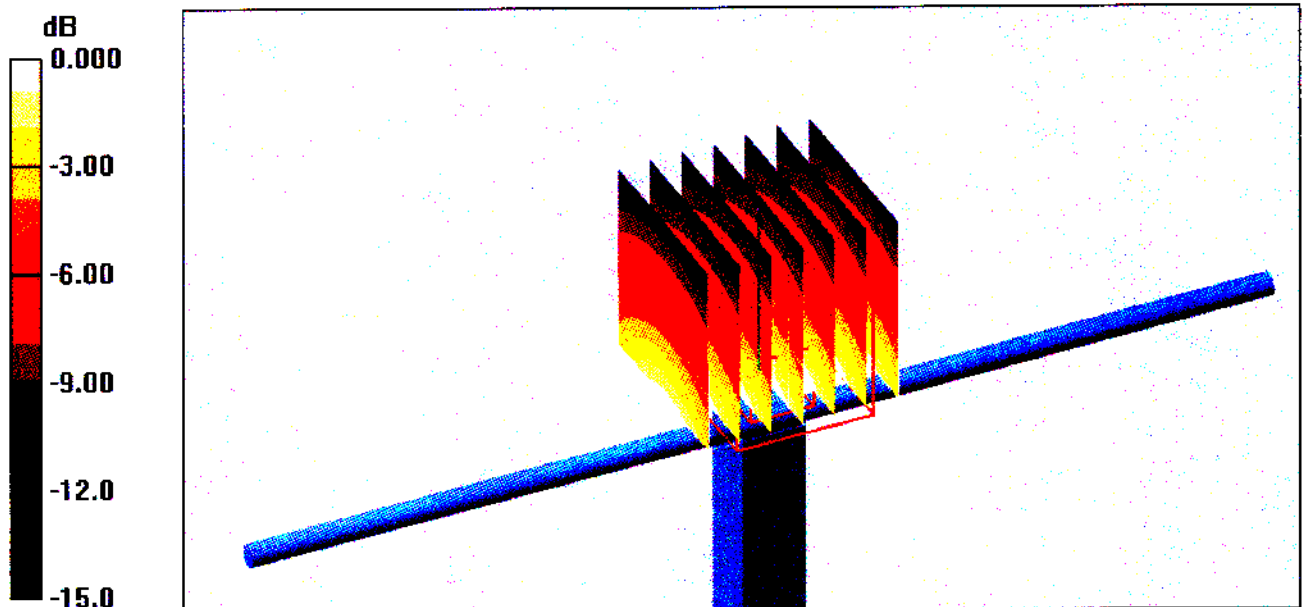
Measurement grid:  $dx=5\text{mm}$ ,  $dy=5\text{mm}$ ,  $dz=5\text{mm}$

Reference Value = 56.1 V/m; Power Drift = -0.002 dB

Peak SAR (extrapolated) = 4.05 W/kg

**SAR(1 g) = 2.81 mW/g; SAR(10 g) = 1.82 mW/g**

Maximum value of SAR (measured) = 3.03 mW/g

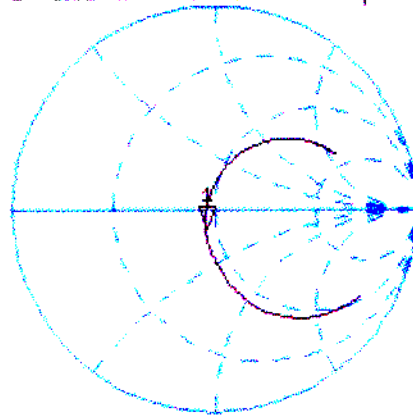


0 dB = 3.03mW/g

# Impedance Measurement Plot for Body TSL

12 Nov 2007 12:12:27  
[CH1] S11 1 U FS 1: 45.027  $\Omega$  -8.6602  $\Omega$  20.420 pF 900.000 000 MHz

\*  
De1  
CA



Avg  
16

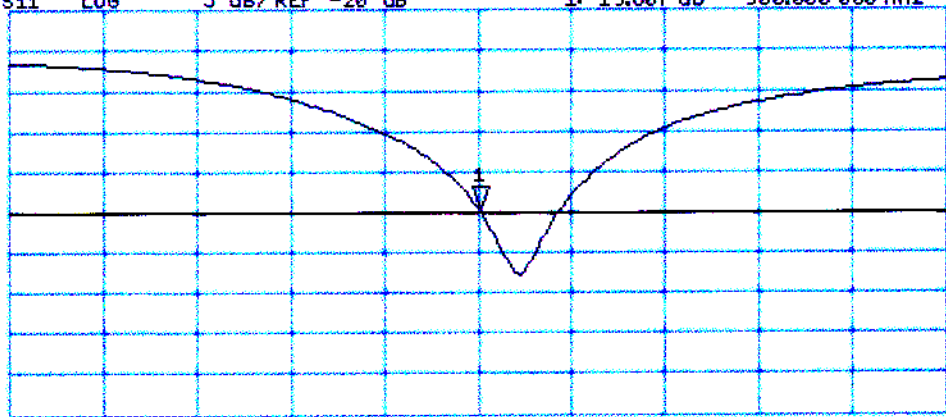
↑

CH2 S11 LOG 5 dB/REF -20 dB 1: -19.607 dB 900.000 000 MHz

CA

Avg  
16

↑



CENTER 900.000 000 MHz

SPAN 400.000 000 MHz