



SAR TEST REPORT

No. 2010EEB00144

For

WANLIDA GROUP CO.,LTD.

NoteBook

PC-91013

With

Wi-Fi module 802.11 b/g/n

Module Name: RT3090

FCCID: VQF-RT3090-1T1R

Issued Date: 2010-03-26



No. DAT-P-114/01-01

Note:

The test results in this test report relate only to the devices specified in this report. This report shall not be reproduced except in full without the written approval of TMC Beijing.

Test Laboratory:

TMC Beijing, Telecommunication Metrology Center of Ministry of Industry and Information Technology

No. 52, Huayuan Bei Road, Haidian District, Beijing, P. R. China 100191.

Tel: +86(0)10-62304633-2079, Fax: +86(0)10-62304793 Email: welcome@emcite.com www.emcite.com



TABLE OF CONTENT

1 TEST LABORATORY	3
1.1 TESTING LOCATION	3
1.2 TESTING ENVIRONMENT	3
1.3 PROJECT DATA	3
1.4 SIGNATURE	3
2 CLIENT INFORMATION	4
2.1 APPLICANT INFORMATION	4
2.2 MANUFACTURER INFORMATION	4
3 EQUIPMENT UNDER TEST (EUT) AND ANCILLARY EQUIPMENT (AE)	5
3.1 ABOUT EUT	5
3.2 INTERNAL IDENTIFICATION OF EUT USED DURING THE TEST	5
4 CHARACTERISTICS OF THE TEST	6
4.1 APPLICABLE LIMIT REGULATIONS	6
4.2 APPLICABLE MEASUREMENT STANDARDS	6
5 OPERATIONAL CONDITIONS DURING TEST	7
5.1 SCHEMATIC TEST CONFIGURATION	7
5.2 SAR MEASUREMENT SET-UP	9
5.3 DASY4 E-FIELD PROBE SYSTEM	10
5.4 E-FIELD PROBE CALIBRATION	11
5.5 OTHER TEST EQUIPMENT	12
5.6 EQUIVALENT TISSUES	12
5.7 SYSTEM SPECIFICATIONS	13
6 TEST RESULTS	13
6.1 DIELECTRIC PERFORMANCE	13
6.2 SYSTEM VALIDATION	13
6.3 SUMMARY OF MEASUREMENT RESULTS	14
6.4 CONCLUSION	14
7 MEASUREMENT UNCERTAINTY	15
8 MAIN TEST INSTRUMENTS	16
ANNEX A MEASUREMENT PROCESS	17
ANNEX B TEST LAYOUT	18
ANNEX C GRAPH RESULTS	19
ANNEX D SYSTEM VALIDATION RESULTS	28
ANNEX E PROBE CALIBRATION CERTIFICATE	36
ANNEX F DIPOLE CALIBRATION CERTIFICATE	45

1 Test Laboratory

1.1 Testing Location

Company Name: TMC Shenzhen, Telecommunication Metrology Center of MIIT
Address: No. 12building, Shangsha Innovation and Technology Park,Futian District,Shenzhen, P. R. China
Postal Code: 518048
Telephone: +86-755-33322000
Fax: +86-755-33322001

1.2 Testing Environment

Temperature: 18°C~25 °C,
Relative humidity: 30%~ 70%
Ground system resistance: < 0.5 Ω
Ambient noise is checked and found very low and in compliance with requirement of standards.
Reflection of surrounding objects is minimized and in compliance with requirement of standards.

1.3 Project Data

Project Leader: Zhou Yi
Test Engineer: Zhu Zhiqiang
Testing Start Date: March 11, 2010
Testing End Date: March 12, 2010

1.4 Signature



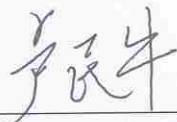
Zhu Zhiqiang

(Prepared this test report)



Zhou Yi

(Reviewed this test report)



Lu Minniu

Director of the laboratory

(Approved this test report)

2 Client Information

2.1 Applicant Information

Company Name:	TUV SUD China Shenzhen branch
Address /Post:	6/F, H Hall, Century Craftwork Culture Square No. 4001 Fuqiang Road, Futian District, shenzhen, P.R.China
City:	Shenzhen
Postal Code:	518048
Country:	China
Telephone:	+86 (0) 755-88286998-273
Fax:	+86 (0) 755-88285299

2.2 Manufacturer Information

Company Name:	WANLIDA GROUP CO.,LTD.
Address /Post:	WANLIDA INDUSTRY ZONE, NANJING ,FUJIAN,CHINA
City:	Xiamen
Postal Code:	/
Country:	China
Telephone:	/
Fax:	/

3 Equipment Under Test (EUT) and Ancillary Equipment (AE)

3.1 About EUT

Description: Notebook PC with WiFi module
Model Name: PC-91013
Brand Name: WANLIDA
Frequency Band: 802.11b/g/n 2.45GHz



Picture 1: Constituents of the sample

3.2 Internal Identification of AE used during the test

AE ID*	Description	Model	SN	Manufacturer
AE1	AC Adapter	EXA0901XH	/	Enertronix INC
AE2	Li-ion battery pack	BT-9011	/	SCUD(FU JIAN)ELECTRONICS CO.,LTD

*EUT/AE ID: is used to identify the test sample in the lab internally.

4 CHARACTERISTICS OF THE TEST

4.1 Applicable Limit Regulations

EN 50360–2001: Product standard for the measurement of Specific Absorption Rate related to human exposure to electromagnetic fields from mobile phones.

It specifies the maximum exposure limit of **2.0 W/kg** as averaged over any 10 gram of tissue for portable devices being used within 20 cm of the user in the uncontrolled environment.

ANSI C95.1–1999: IEEE Standard for Safety Levels with Respect to Human Exposure to Radio Frequency Electromagnetic Fields, 3 kHz to 300 GHz.

47 CFR §2.1093: Radiofrequency radiation exposure evaluation: portable devices.

They specify the maximum exposure limit of **1.6 W/kg** as averaged over any 1 gram of tissue for portable devices being used within 20 cm of the user in the uncontrolled environment.

4.2 Applicable Measurement Standards

EN 62209-1–2006: Human exposure to radio frequency fields from hand-held and body-mounted wireless communication devices – Human models, instrumentation, and procedures –Part 1: Procedure to determine the specific absorption rate (SAR) for hand-held devices used in close proximity to the ear (frequency range of 300 MHz to 3 GHz).

IEEE 1528–2003: Recommended Practice for Determining the Peak Spatial-Average Specific Absorption Rate (SAR) in the Human Body Due to Wireless Communications Devices: Experimental Techniques.

OET Bulletin 65 (Edition 97-01) and Supplement C(Edition 01-01): Additional Information for Evaluating Compliance of Mobile and Portable Devices with FCC Limits.

IEC 62209-2 (Draft): Human exposure to radio frequency fields from hand-held and body-mounted wireless communication devices – Human models, instrumentation, and procedures – Part 2: Procedure to determine the Specific Absorption Rate (SAR) in the head and body for 30MHz to 6GHz Handheld and Body-Mounted Devices used in close proximity to the Body.

KDB 447498 D01: Mobile and Portable Device RF Exposure Procedures and Equipment Authorization Policies v03r02

KDB 248227: SAR Measurement Procedures for 802.11 a/b/g transmitter

KDB 616217: SAR Evaluation Considerations for Laptop Computers with Antennas Built-in on Display Screens.

They specify the measurement method for demonstration of compliance with the SAR limits for such equipments.

5 OPERATIONAL CONDITIONS DURING TEST

5.1 Schematic Test Configuration

5.1.1 Test positions

The EUT is tested at the following 6 test positions (the antenna of the WiFi module is located along the top edge of the display):

Test position 1: The bottom of the computer is in direct contact against the flat phantom, and the display open to the perpendicular position.

Test position 2: The bottom of the computer is in direct contact against the flat phantom, and the display fold over on to the keyboard section.

Test position 3: The cover of the computer is in direct contact against the flat phantom, and the display open to the perpendicular position.

Test position 4: The cover of the computer is in direct contact against the flat phantom, and the display fold over on to the keyboard section.

Test position 5: The top side of the display is in direct contact against the flat phantom, and the display open to the perpendicular position.

Test position 6: The top side of the display is in direct contact against the flat phantom, and the display fold over on to the keyboard section.



Picture 2-a: Test position 1



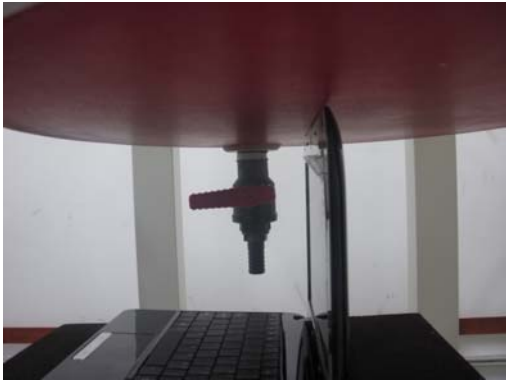
Picture 2-b: Test position 2



Picture 2-c: Test position 3



Picture 2-d: Test position 4



Picture 2-e: Test position 5



Picture 2-f: Test position 6

5.1.2 Body SAR Measurement Description

The EUT has only one transmitter: WiFi 802.11b/g/n module, the antenna location is as following.



Picture 3 antenna positions

WiFi 802.11b/g/n 2.45GHz band

Because SAR is not required for 802.11g channels since the output power is less than 0.25dB higher than that measured on the corresponding 802.11b channels, and for each frequency band, testing at higher data rates and higher order modulations is not required when the maximum average output power for each of these configurations is less than 0.25dB higher than those measured at the lowest data rate. According to the following conducted power, the EUT should be tested for “802.11b 1Mbps” first, then the necessary configurations in “802.11nHT20” and “802.11nHT40”.

A communication link is set up with the test mode software for WiFi mode test. The test mode

software we used is Ralink QA Test Program for RT3090 with the version of V1.5.3.0 supported by company Ralink. For 802.11b, 802.11g and 802.11n HT20, the Absolute Radio Frequency Channel Number (ARFCN) is allocated to 1, 6 and 11 respectively in the case of 2450 MHz. For 802.11n HT40, the Absolute Radio Frequency Channel Number (ARFCN) is allocated to 3, 6 and 9 respectively in the case of 2450 MHz. During the test, at the each test frequency channel, the EUT is operated at the RF continuous emission mode. The tests are performed for WiFi at middle frequency first for all the 6 test positions, and according to the 3 dB rule, "if the SAR measured at the middle channel for each test configuration is at least 3 dB lower than the SAR limit, testing at the high and low channels is optional for such test configuration(s)." So the test channels have been set first to the middle and then to low and high if necessary.

The conducted power for WiFi is as following:

802.11b (dBm)

Channel\data rate	1Mbps	2Mbps	5.5Mbps	11Mbps
1	19.30	18.25	16.84	16.47
6	18.90	17.80	16.27	16.07
11	18.75	17.65	15.90	15.77

802.11g (dBm)

Channel\data rate	6Mbps	9Mbps	12Mbps	18Mbps	24Mbps	36Mbps	48Mbps	54Mbps
1	18.33	18.17	18.15	18.06	17.60	17.38	17.33	17.19
6	18.39	18.30	18.25	18.21	17.78	17.66	17.57	17.43
11	18.09	17.90	17.81	17.68	17.36	17.35	17.44	17.21

802.11n HT20 (dBm)

Channel\data rate	6.5 Mbps	13 Mbps	19.5 Mbps	26 Mbps	39 Mbps	52 Mbps	58.5 Mbps	65 Mbps
1	18.55	18.40	18.33	18.31	18.18	18.01	17.93	17.88
6	18.30	18.28	18.22	18.18	18.09	17.76	17.58	17.35
11	17.86	17.62	17.59	17.36	17.30	17.30	17.22	17.14

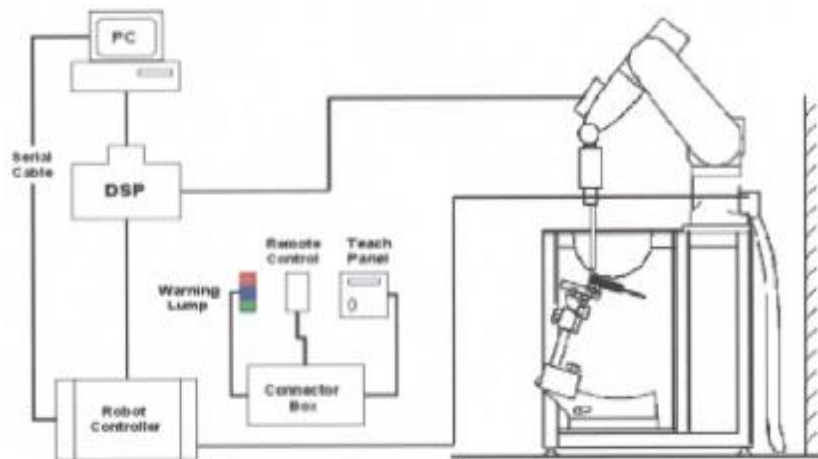
802.11n HT40 (dBm)

Channel\data rate	13.5 Mbps	27 Mbps	40.5 Mbps	54 Mbps	81 Mbps	108 Mbps	121.5 Mbps	135 Mbps
3	18.81	18.30	18.28	18.11	17.75	17.46	17.20	16.68
6	17.67	17.57	17.35	17.30	17.24	17.24	17.18	16.65
9	18.40	18.33	18.22	18.07	17.93	17.60	17.11	16.46

5.2 SAR Measurement Set-up

These measurements were performed with the automated near-field scanning system DASY5 NEO from Schmid & Partner Engineering AG (SPEAG). The system is based on a high precision robot (working range greater than 0.9m), which positions the probes with a positional repeatability of better than $\pm 0.02\text{mm}$. Special E- and H-field probes have been developed for measurements close to material discontinuity, the sensors of which are directly loaded with a Schottky diode and connected via highly resistive lines (length = 300mm) to the data acquisition unit.

A cell controller system contains the power supply, robot controller, teaches pendant (Joystick), and remote control, is used to drive the robot motors. The PC consists of Intel® Core™ CPU 6300 @1.86GHz computer with Windows XP system and SAR Measurement Software DASY5 NEO, A/D interface card, monitor, mouse, and keyboard. The Stäubli Robot is connected to the cell controller to allow software manipulation of the robot. A data acquisition electronic (DAE) circuit performs the signal amplification, signal multiplexing, AD-conversion, offset measurements, mechanical surface detection, collision detection, etc. is connected to the Electro-optical coupler (EOC). The EOC performs the conversion from the optical into digital electric signal of the DAE and transfers data to the PC plug-in card.



Picture 4: SAR Lab Test Measurement Set-up

The DAE consists of a highly sensitive electrometer-grade preamplifier with auto-zeroing, a channel and gain-switching multiplexer, a fast 16 bit AD-converter and a command decoder and control logic unit. Transmission to the PC-card is accomplished through an optical downlink for data and status information and an optical uplink for commands and clock lines. The mechanical probe mounting device includes two different sensor systems for frontal and sidewise probe contacts. They are also used for mechanical surface detection and probe collision detection. The robot uses its own controller with a built in VME-bus computer.

5.3 Dasy5 E-field Probe System

The SAR measurements were conducted with the dosimetric probe EX3DV4 (manufactured by SPEAG), designed in the classical triangular configuration and optimized for dosimetric evaluation. The probe has been calibrated according to the standard procedure with an accuracy of better than $\pm 10\%$. The spherical isotropy was evaluated and found to be better than $\pm 0.25\text{dB}$.

EX3DV4 Probe Specification

Construction Symmetrical design with triangular core
 Interleaved sensors
 Built-in shielding against static charges
 PEEK enclosure material (resistant to organic solvents, e.g., DGBE)

Calibration Basic Broad Band Calibration in air
 Conversion Factors (CF) for HSL 900 and HSL 1750
 Additional CF for other liquids and frequencies



Picture 5: EX3DV4 E-field Probe

	upon request
Frequency	10 MHz to 6 GHz; Linearity: ± 0.2 dB (30 MHz to 6 GHz)
Directivity	± 0.3 dB in HSL (rotation around probe axis) ± 0.5 dB in tissue material (rotation normal to probe axis)
Dynamic Range	10 μ W/g to > 100 mW/g; Linearity: ± 0.2 dB
Dimensions	Overall length: 330 mm (Tip: 20 mm) Tip diameter: 2.5 mm (Body: 12 mm) Distance from probe tip to dipole centers: 1mm
Application	High precision dosimetric measurements in any exposure scenario (e.g., very strong gradient fields). Only probe which enables compliance testing for frequencies up to 6 GHz with precision of better 30%.



Picture6:EX3DV4 E-field probe

5.4 E-field Probe Calibration

Each probe is calibrated according to a dosimetric assessment procedure with accuracy better than $\pm 10\%$. The spherical isotropy was evaluated and found to be better than ± 0.25 dB. The sensitivity parameters (NormX, NormY, NormZ), the diode compression parameter (DCP) and the conversion factor (ConvF) of the probe are tested.

The free space E-field from amplified probe outputs is determined in a test chamber. This is performed in a TEM cell for frequencies below 1 GHz, and in a wave guide above 1 GHz for free space. For the free space calibration, the probe is placed in the volumetric center of the cavity and at the proper orientation with the field. The probe is then rotated 360 degrees.

E-field temperature correlation calibration is performed in a flat phantom filled with the appropriate simulated brain tissue. The measured free space E-field in the medium correlates to temperature rise in a dielectric medium. For temperature correlation calibration a RF transparent thermistor-based temperature probe is used in conjunction with the E-field probe.

$$SAR = C \frac{\Delta T}{\Delta t}$$

Where: Δt = Exposure time (30 seconds),
C = Heat capacity of tissue (brain or muscle),
 ΔT = Temperature increase due to RF exposure.

Or

$$SAR = \frac{|E|^2 \sigma}{\rho}$$

Where:

σ = Simulated tissue conductivity,
 ρ = Tissue density (kg/m^3).



Picture 7: Device Holder

5.5 Other Test Equipment

5.5.1 Device Holder for Transmitters

In combination with the Generic Twin Phantom V3.0, the Mounting Device (POM) enables the rotation of the mounted transmitter in spherical coordinates whereby the rotation points is the ear opening. The devices can be easily, accurately, and repeatably positioned according to the FCC and CENELEC specifications. The device holder can be locked at different phantom locations (left head, right head, flat phantom).



5.5.2 Phantom

Picture 8: Generic Twin Phantom

The Generic Twin Phantom is constructed of a fiberglass shell integrated in a wooden table. The shape of the shell is based on data from an anatomical study designed to determine the maximum exposure in at least 90% of all users. It enables the dosimetric evaluation of left and right hand phone usage as well as body mounted usage at the flat phantom region. A cover prevents the evaporation of the liquid. Reference markings on the Phantom allow the complete setup of all predefined phantom positions and measurement grids by manually teaching three points in the robot.

Shell Thickness	2±0.1 mm
Filling Volume	Approx. 20 liters
Dimensions	810 x 1000 x 500 mm (H x L x W)
Available	Special

5.6 Equivalent Tissues

The liquid used for the frequency range of 2000-3000 MHz consisted of water, Glycol monobutyl, and salt. The liquid has been previously proven to be suited for worst-case. The Table 4 shows the detail solution. It's satisfying the latest tissue dielectric parameters requirements proposed by the IEEE 1528.

Table 1: Composition of the Body Tissue Equivalent Matter

MIXTURE %	FREQUENCY 2450MHz
Water	72.60
Glycol monobutyl	27.22
Salt	0.18
Dielectric Parameters Target Value	f=2450MHz ε=52.7 σ=1.95

5.7 System Specifications

5.7.1 Robotic System Specifications

Specifications

Positioner: Stäubli Unimation Corp. Robot Model: TX90XL

Repeatability: ± 0.02 mm

No. of Axis: 6

Data Acquisition Electronic (DAE) System

Cell Controller

Processor: Intel® Core™ CPU 6300

Clock Speed: 1.86GHz

Operating System: Windows XP

Data Converter

Features: Signal Amplifier, multiplexer, A/D converter, and control logic

Software: DASY5 software

Connecting Lines: Optical downlink for data and status info.
Optical uplink for commands and clock

6 TEST RESULTS

6.1 Dielectric Performance

Table 2: Dielectric Performance of Body Tissue Simulating Liquid

Measurement is made at temperature 23.3 °C and relative humidity 49%. Liquid temperature during the test: 22.5°C				
/	Measurement date	Frequency	Permittivity ϵ	Conductivity σ (S/m)
Target value	/	2450 MHz	52.7	1.95
Measurement value (Average of 10 tests)	3/11/2010	2450 MHz	50.82	1.97
	3/12/2010	2450 MHz	50.46	1.97

6.2 System Validation

Table 3: System Validation

Measurement is made at temperature 23.3 °C and relative humidity 49%,input power 250mW Liquid temperature during the test: 22.5°C Measurement Date : 2450 MHz March 11, 2010				
Liquid parameters	Dipole calibration	Frequency	Permittivity ϵ	Conductivity σ (S/m)
	Target value	2450 MHz	40.5	1.85
	Actual Measurement value	2450 MHz	38.9	1.83

Verification results	Frequency	Target value (W/kg)		Measured value (W/kg)		Deviation	
		10 g Average	1 g Average	10 g Average	1 g Average	10 g Average	1 g Average
	2450 MHz	5.91	13.07	5.78	12.8	-2.20%	-2.07%
Measurement is made at temperature 23.3 °C and relative humidity 49%,input power 250mW Liquid temperature during the test: 22.5°C Measurement Date : 2450 MHz March 12, 2010							
Liquid parameters	Dipole calibration	Frequency		Permittivity ϵ		Conductivity σ (S/m)	
	Target value	2450 MHz		40.5		1.85	
	Actual Measurement value	2450 MHz		38.5		1.83	
Verification results	Frequency	Target value (W/kg)		Measured value (W/kg)		Deviation	
		10 g Average	1 g Average	10 g Average	1 g Average	10 g Average	1 g Average
	2450 MHz	5.91	13.07	5.81	12.86	-1.69%	-1.61%

Note: Target values are the data of the dipole validation results, please check Annex F for the Dipole Calibration Certificate.

6.3 Summary of Measurement Results

Table 4: SAR Values (WiFi 802.11b)

Limit of SAR (W/kg)	10 g Average	1 g Average	Power Drift (dB)
	2.0	1.6	
Test Case(Flat Phantom)	Measurement Result (W/kg)		
	10 g Average	1 g Average	
Test Position 1, Mid frequency,1Mbps(See Figure 1)	0.00472	0.00563	0.169
Test Position 2, Mid frequency,1Mbps (See Figure 2)	0.00383	0.00747	0.186
Test Position 3, Mid frequency,1Mbps (See Figure 3)	0.216	0.451	0.17
Test Position 4, Mid frequency,1Mbps (See Figure 4)	0.118	0.256	0.167
Test Position 5, Mid frequency,1Mbps (See Figure 5)	0.153	0.326	0.151
Test Position 6, Mid frequency,1Mbps (See Figure 6)	0.129	0.310	0.184
Test Position 3, Top frequency ,1Mbps (See Figure 7)	0.269	0.585	0.105
Test Position 3, Bottom frequency,1Mbps (See Figure 8)	0.225	0.490	0.136

Table 5: SAR Values (WiFi 802.11n HT20)

Limit of SAR (W/kg)	10 g Average	1 g Average	Power Drift (dB)
	2.0	1.6	
Test Case(Flat Phantom)	Measurement Result (W/kg)		
	10 g Average	1 g Average	
Test Position 3, Mid frequency,6.5Mbps(See Figure 9)	0.131	0.274	0.18

Test Position 3, Top frequency,6.5Mbps (See Figure 10)	0.123	0.261	0.192
Test Position 3, Bottom frequency,6.5Mbps (See Figure 11)	0.105	0.220	0.102

Table 6: SAR Values (WiFi 802.11n HT40)

Limit of SAR (W/kg)	10 g Average	1 g Average	Power Drift (dB)
	2.0	1.6	
Test Case(Flat Phantom)	Measurement Result (W/kg)		
	10 g Average	1 g Average	
Test Position 3, Mid frequency,13.5Mbps(See Figure 12)	0.079	0.159	0.157
Test Position 3, Top frequency,13.5Mbps (See Figure 13)	0.101	0.205	0.158
Test Position 3, Bottom frequency,13.5Mbps (See Figure 14)	0.098	0.197	0.109

6.4 Conclusion

Localized Specific Absorption Rate (SAR) of this portable wireless device has been measured in all cases requested by the relevant standards cited in Clause 4.2 of this report. Maximum localized SAR is below exposure limits specified in the relevant standards cited in Clause 4.1 of this test report.

7 Measurement Uncertainty

SN	a	Type	c	d	$e = f(d,k)$	f	$h = c \times f / e$	k
	Uncertainty Component		Tol. (\pm %)	Prob. Dist.	Div.	c_i (1 g)	1 g u_i (\pm %)	v_i
1	System repetivity	A	0.5	N	1	1	0.5	9
	Measurement System							
2	Probe Calibration	B	5	N	2	1	2.5	∞
3	Axial Isotropy	B	4.7	R	$\sqrt{3}$	$(1-c_p)^{1/2}$	4.3	∞
4	Hemispherical Isotropy	B	9.4	R	$\sqrt{3}$	$\sqrt{c_p}$		∞
5	Boundary Effect	B	0.4	R	$\sqrt{3}$	1	0.23	∞
6	Linearity	B	4.7	R	$\sqrt{3}$	1	2.7	∞
7	System Detection Limits	B	1.0	R	$\sqrt{3}$	1	0.6	∞
8	Readout Electronics	B	1.0	N	1	1	1.0	∞
9	RF Ambient Conditions	B	3.0	R	$\sqrt{3}$	1	1.73	∞
10	Probe Positioner Mechanical Tolerance	B	0.4	R	$\sqrt{3}$	1	0.2	∞
11	Probe Positioning with respect to Phantom Shell	B	2.9	R	$\sqrt{3}$	1	1.7	∞
12	Extrapolation, interpolation and Integration Algorithms for Max. SAR Evaluation	B	3.9	R	$\sqrt{3}$	1	2.3	∞
	Test sample Related							
13	Test Sample Positioning	A	4.9	N	1	1	4.9	N-1

14	Device Holder Uncertainty	A	6.1	N	1	1	6.1	N-1
15	Output Power Variation - SAR drift measurement	B	5.0	R	$\sqrt{3}$	1	2.9	∞
Phantom and Tissue Parameters								
16	Phantom Uncertainty (shape and thickness tolerances)	B	1.0	R	$\sqrt{3}$	1	0.6	∞
17	Liquid Conductivity - deviation from target values	B	5.0	R	$\sqrt{3}$	0.64	1.7	∞
18	Liquid Conductivity - measurement uncertainty	B	5.0	N	1	0.64	1.7	M
19	Liquid Permittivity - deviation from target values	B	5.0	R	$\sqrt{3}$	0.6	1.7	∞
20	Liquid Permittivity - measurement uncertainty	B	5.0	N	1	0.6	1.7	M
Combined Standard Uncertainty				RSS			11.25	
Expanded Uncertainty (95% CONFIDENCE INTERVAL)				K=2			22.5	

8 MAIN TEST INSTRUMENTS

Table 7: List of Main Instruments

No.	Name	Type	Serial Number	Calibration Date	Valid Period
01	Network analyzer	Agilent E5071C	MY46103759	January 18,2010	One year
02	Power meter	NRVD	101253	March 9,2010	One year
03	Power sensor	NRV-Z5	100333		
04	Power sensor	NRV-Z6	100011	September 1, 2009	One year
05	Signal Generator	Agilent E4438C	MY45095825	January 18,2010	One Year
06	Amplifier	VTL5400	0505	No Calibration Requested	
07	E-field Probe	SPEAG EX3DV4	3617	July 9, 2009	One year
08	DAE	SPEAG DAE4	786	November 23, 2009	One year
09	Dipole Validation Kit	IndexSAR IXD-245	40102	October, 2008	Two years

END OF REPORT BODY

ANNEX A MEASUREMENT PROCESS

The evaluation was performed with the following procedure:

Step 1: Measurement of the SAR value at a fixed location above the reference point was measured and was used as a reference value for assessing the power drop.

Step 2: The SAR distribution at the exposed side of the phantom was measured at a distance of 3.9 mm from the inner surface of the shell. The area covered the entire dimension of the flat phantom and the horizontal grid spacing was 10 mm x 10 mm. Based on this data, the area of the maximum absorption was determined by spline interpolation.

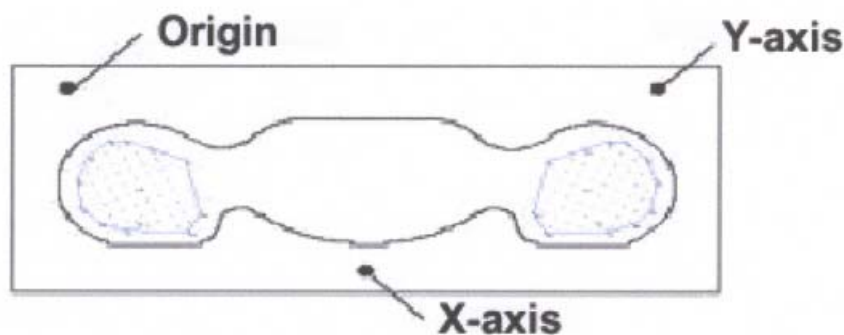
Step 3: Around this point, a volume of 30 mm x 30 mm x 30 mm was assessed by measuring 7 x 7x 7 points. On this basis of this data set, the spatial peak SAR value was evaluated with the following procedure:

a. The data at the surface were extrapolated, since the center of the dipoles is 2.7 mm away from the tip of the probe and the distance between the surface and the lowest measuring point is 1.2 mm. The extrapolation was based on a least square algorithm. A polynomial of the fourth order was calculated through the points in z-axes. This polynomial was then used to evaluate the points between the surface and the probe tip.

b. The maximum interpolated value was searched with a straightforward algorithm. Around this maximum the SAR values averaged over the spatial volumes (1g or 10g) were computed using the 3D-Spline interpolation algorithm. The 3D-spline is composed of three one-dimensional splines with the "Not a knot"-condition (in x ~ y and z-directions). The volume was integrated with the trapezoidal algorithm. One thousand points (10 x 10 x 10) were interpolated to calculate the average.

c. All neighboring volumes were evaluated until no neighboring volume with a higher average value was found.

Step 4: Re-measurement the SAR value at the same location as in Step 1. If the value changed by more than 5%, the evaluation is repeated.



Picture A: SAR Measurement Points in Area Scan

ANNEX B TEST LAYOUT



Picture B1: Specific Absorption Rate Test Layout



Picture B2 Liquid depth in the Flat Phantom (2450MHz)

ANNEX C GRAPH RESULTS

WiFi 802.11b 2450MHz Test Position 1 Middle 1Mbps

Date/Time: 3/11/2010 8:44:24

Electronics: DAE4 Sn786;Medium: Body2450

Medium parameters used (interpolated): $f = 2437$ MHz; $\sigma = 1.97$ mho/m; $\epsilon_r = 50$;
 $\rho = 1000$ kg/m³

Ambient Temperature:23.3°C

Liquid Temperature: 22.5°C

Communication System: WiFi 802.11 b Frequency: 2437 MHz Duty Cycle: 1:1

Probe: EX3DV4 - SN3617 ConvF(6.88, 6.88, 6.88)

Test position 1_Channel Middle_1Mbps/Area Scan (141x201x1): Measurement

grid: dx=10mm, dy=10mm

Maximum value of SAR (interpolated) = 0.00876 mW/g

Test position 1_Channel Middle_1Mbps/Zoom Scan (7x7x7)/Cube 0:

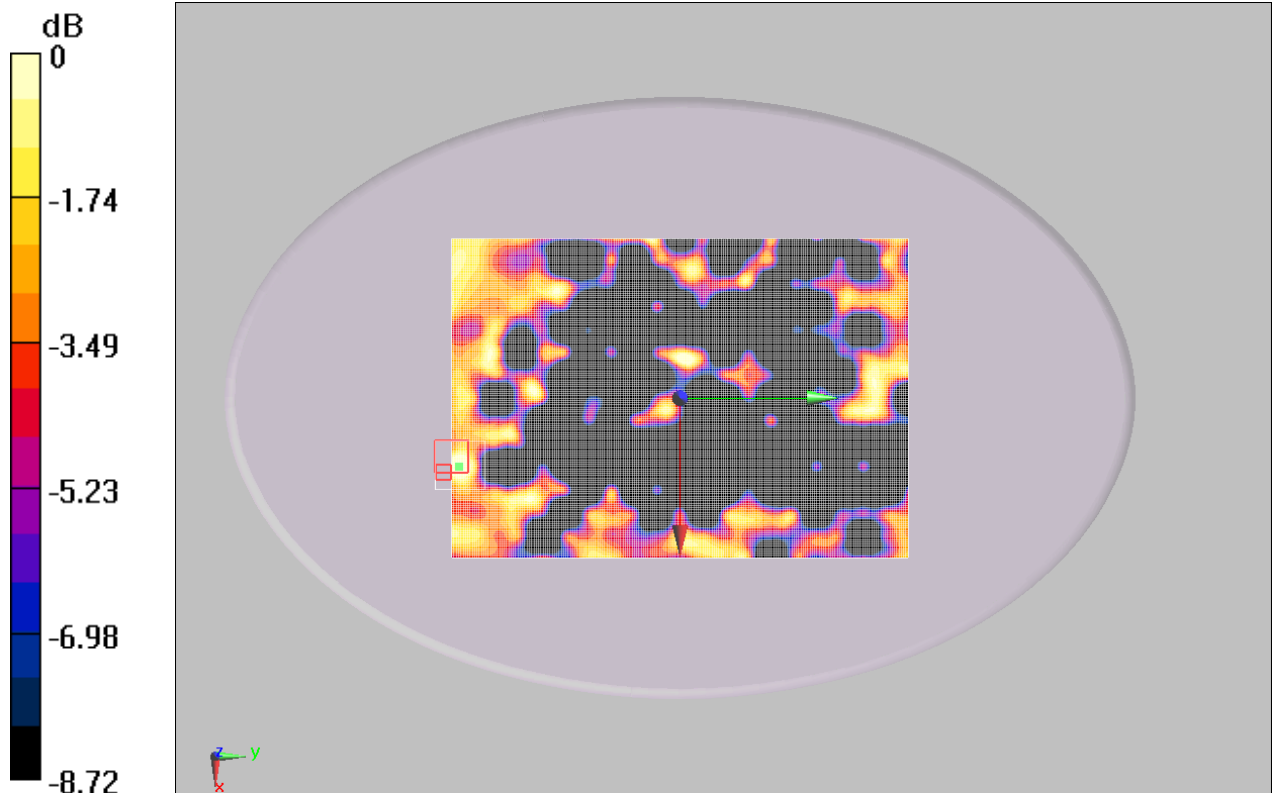
Measurement grid: dx=5mm, dy=5mm, dz=5mm

Reference Value = 1.6 V/m; Power Drift = 0.169 dB

Peak SAR (extrapolated) = 0.00732 W/kg

SAR(1 g) = 0.00563 mW/g; SAR(10 g) = 0.00472 mW/g

Maximum value of SAR (measured) = 0.00723 mW/g



0 dB = 0.00723mW/g

Fig.1 2450MHz CH6 Test Position 1-WiFi 802.11b 1Mbps

WiFi 802.11b 2450MHz Test Position 2 Middle 1Mbps

Date/Time: 3/11/2010 9:31:56

Electronics: DAE4 Sn786

Medium: Body2450

Medium parameters used (interpolated): $f = 2437$ MHz; $\sigma = 1.97$ mho/m; $\epsilon_r = 50$; $\rho = 1000$ kg/m³

Ambient Temperature: 23.3°C

Liquid Temperature: 22.5°C

Communication System: WiFi 802.11 b Frequency: 2437 MHz Duty Cycle: 1:1

Probe: EX3DV4 - SN3617 ConvF(6.88, 6.88, 6.88)

Test position 2_Channel Middle_1Mbps/Area Scan (141x201x1): Measurement

grid: dx=10mm, dy=10mm

Maximum value of SAR (interpolated) = 0.020 mW/g

Test position 2_Channel Middle_1Mbps/Zoom Scan (7x7x7)/Cube 0:

Measurement grid: dx=5mm, dy=5mm, dz=5mm

Reference Value = 1.9 V/m; Power Drift = 0.186 dB

Peak SAR (extrapolated) = 0.019 W/kg

SAR(1 g) = 0.00747 mW/g; SAR(10 g) = 0.00383 mW/g

Maximum value of SAR (measured) = 0.010 mW/g

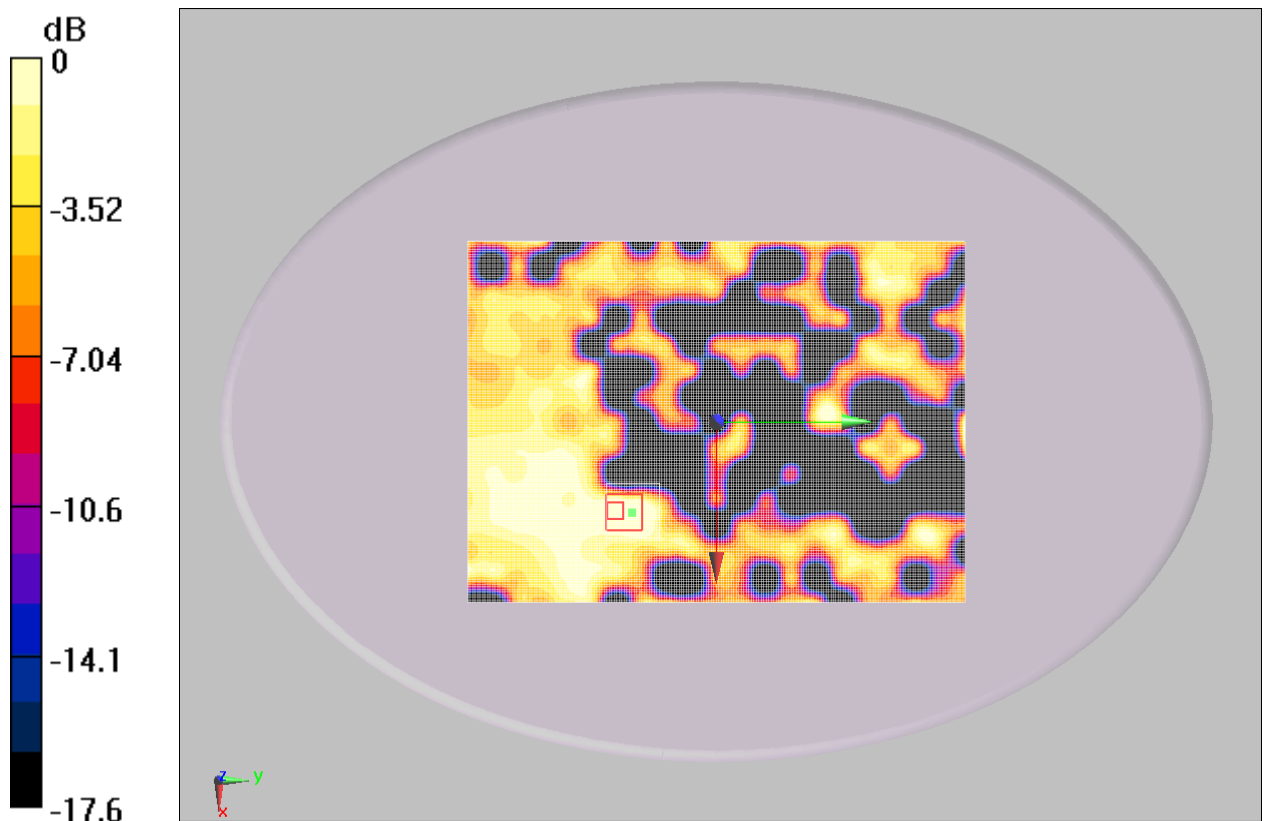


Fig.2 2450MHz CH6 Test Position 2-WiFi 802.11b 1Mbps

WiFi 802.11b 2450MHz Test Position 3 Middle 1Mbps

Date/Time: 3/11/2010 10:11:58

Electronics: DAE4 Sn786

Medium: Body2450

Medium parameters used (interpolated): $f = 2437$ MHz; $\sigma = 1.97$ mho/m; $\epsilon_r = 50$;
 $\rho = 1000$ kg/m³

Ambient Temperature: 23.3°C

Liquid Temperature: 22.5°C

Communication System: WiFi 802.11 b Frequency: 2437 MHz Duty Cycle: 1:1

Probe: EX3DV4 - SN3617 ConvF(6.88, 6.88, 6.88)

Test position 3_Channel Middle_1Mbps/Area Scan (141x201x1): Measurement

grid: dx=10mm, dy=10mm

Maximum value of SAR (interpolated) = 0.553 mW/g

Test position 3_Channel Middle_1Mbps/Zoom Scan (7x7x7)/Cube 0:

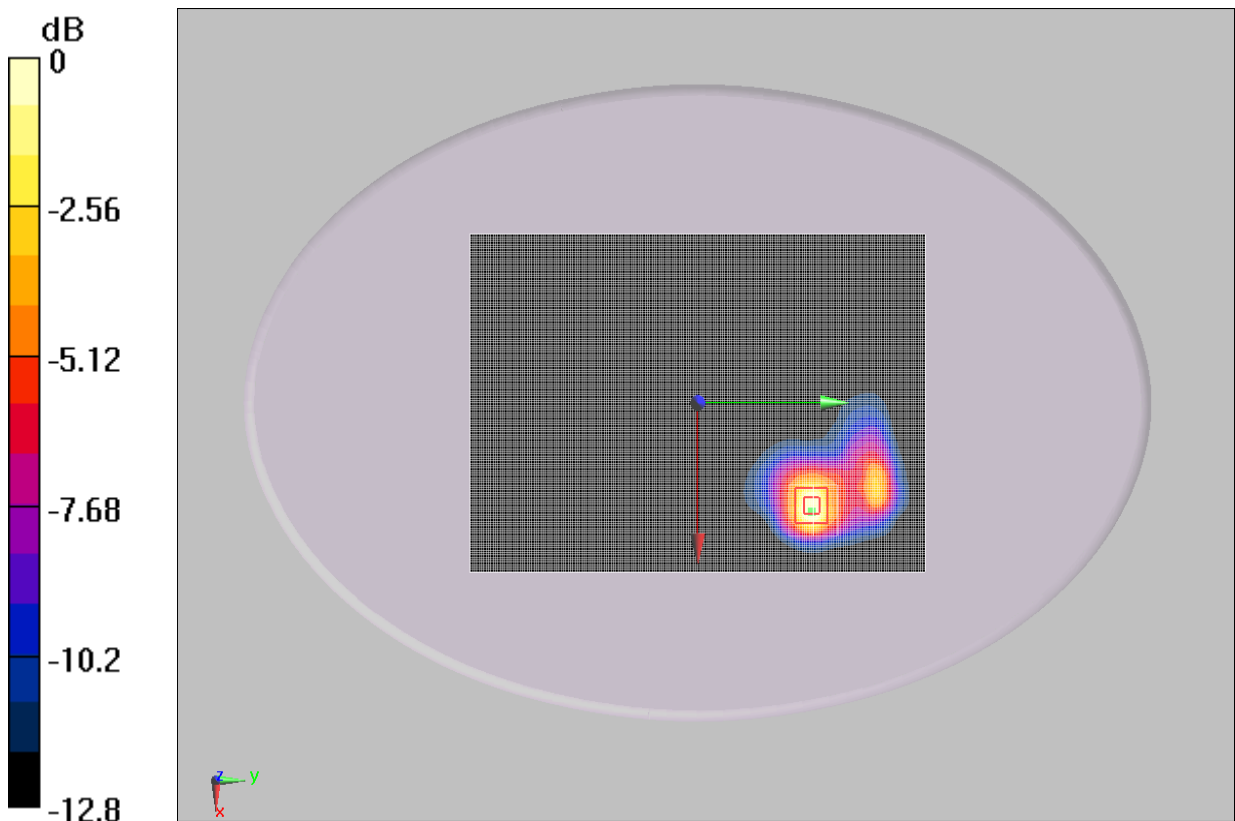
Measurement grid: dx=5mm, dy=5mm, dz=5mm

Reference Value = 1.77 V/m; Power Drift = 0.17 dB

Peak SAR (extrapolated) = 1.09 W/kg

SAR(1 g) = 0.451 mW/g; SAR(10 g) = 0.216 mW/g

Maximum value of SAR (measured) = 0.484 mW/g



0 dB = 0.484mW/g

Fig.3 2450MHz CH6 Test Position 3-WiFi 802.11b 1Mbps

WiFi 802.11b 2450MHz Test Position 4 Middle 1Mbps

Date/Time: 3/11/2010 10:57:32

Electronics: DAE4 Sn786

Medium: Body2450

Medium parameters used (interpolated): $f = 2437$ MHz; $\sigma = 1.97$ mho/m; $\epsilon_r = 50$; $\rho = 1000$ kg/m³

Ambient Temperature: 23.3°C

Liquid Temperature: 22.5°C

Communication System: WiFi 802.11 b Frequency: 2437 MHz Duty Cycle: 1:1

Probe: EX3DV4 - SN3617 ConvF(6.88, 6.88, 6.88)

Test position 4_Channel Middle_1Mbps/Area Scan (141x201x1): Measurement

grid: dx=10mm, dy=10mm

Maximum value of SAR (interpolated) = 0.312 mW/g

Test position 4_Channel Middle_1Mbps/Zoom Scan (7x7x7)/Cube 0:

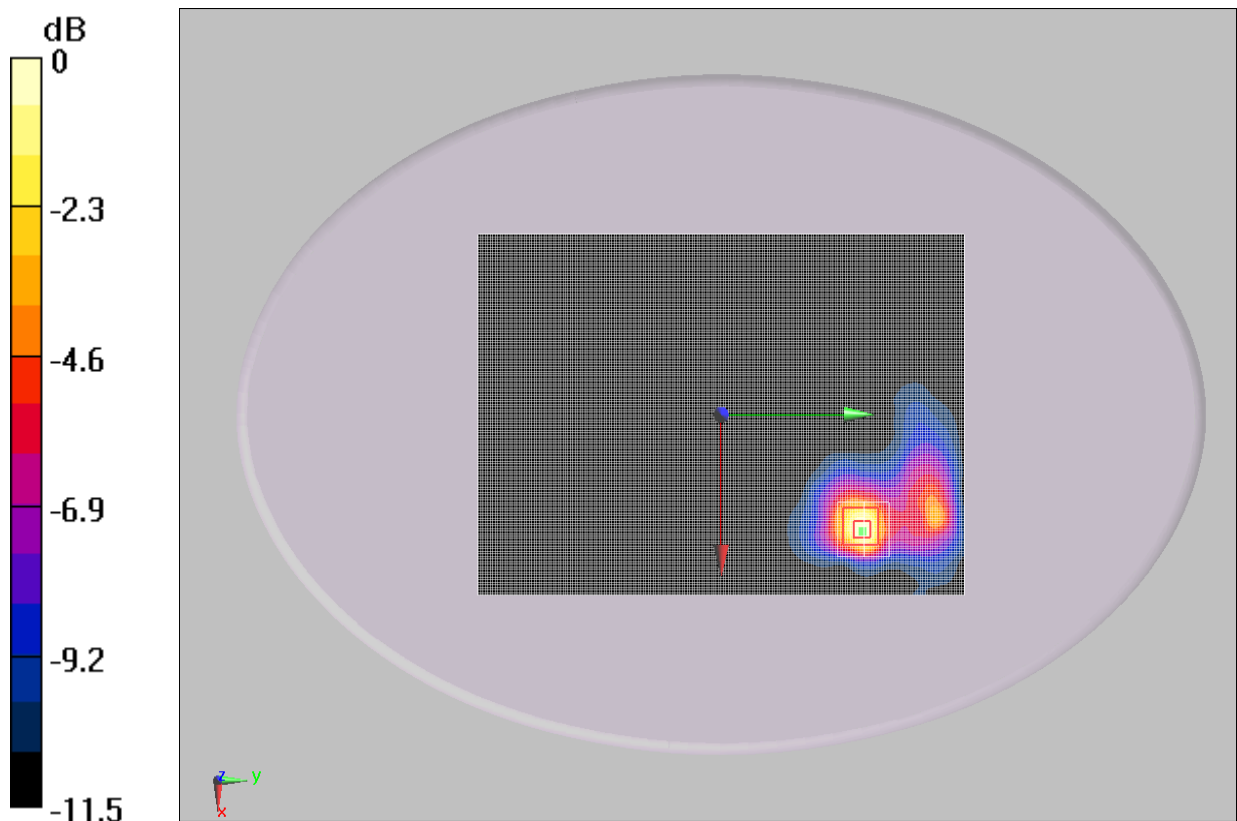
Measurement grid: dx=5mm, dy=5mm, dz=5mm

Reference Value = 2.32 V/m; Power Drift = 0.167 dB

Peak SAR (extrapolated) = 0.700 W/kg

SAR(1 g) = 0.256 mW/g; SAR(10 g) = 0.118 mW/g

Maximum value of SAR (measured) = 0.285 mW/g



0 dB = 0.285mW/g

Fig.4 2450MHz CH6 Test Position 4-WiFi 802.11b 1Mbps

WiFi 802.11b 2450MHz Test Position 5 Middle 1Mbps

Date/Time: 3/11/2010 11:32:37

Electronics: DAE4 Sn786

Medium: Body2450

Medium parameters used (interpolated): $f = 2437$ MHz; $\sigma = 1.97$ mho/m; $\epsilon_r = 50$;
 $\rho = 1000$ kg/m³

Ambient Temperature: 23.3°C

Liquid Temperature: 22.5°C

Communication System: WiFi 802.11 b Frequency: 2437 MHz Duty Cycle: 1:1

Probe: EX3DV4 - SN3617 ConvF(6.88, 6.88, 6.88)

Test position 5_Channel Middle_1Mbps/Area Scan (61x201x1): Measurement

grid: dx=10mm, dy=10mm

Maximum value of SAR (interpolated) = 0.393 mW/g

Test position 5_Channel Middle_1Mbps/Zoom Scan (7x7x7)/Cube 0:

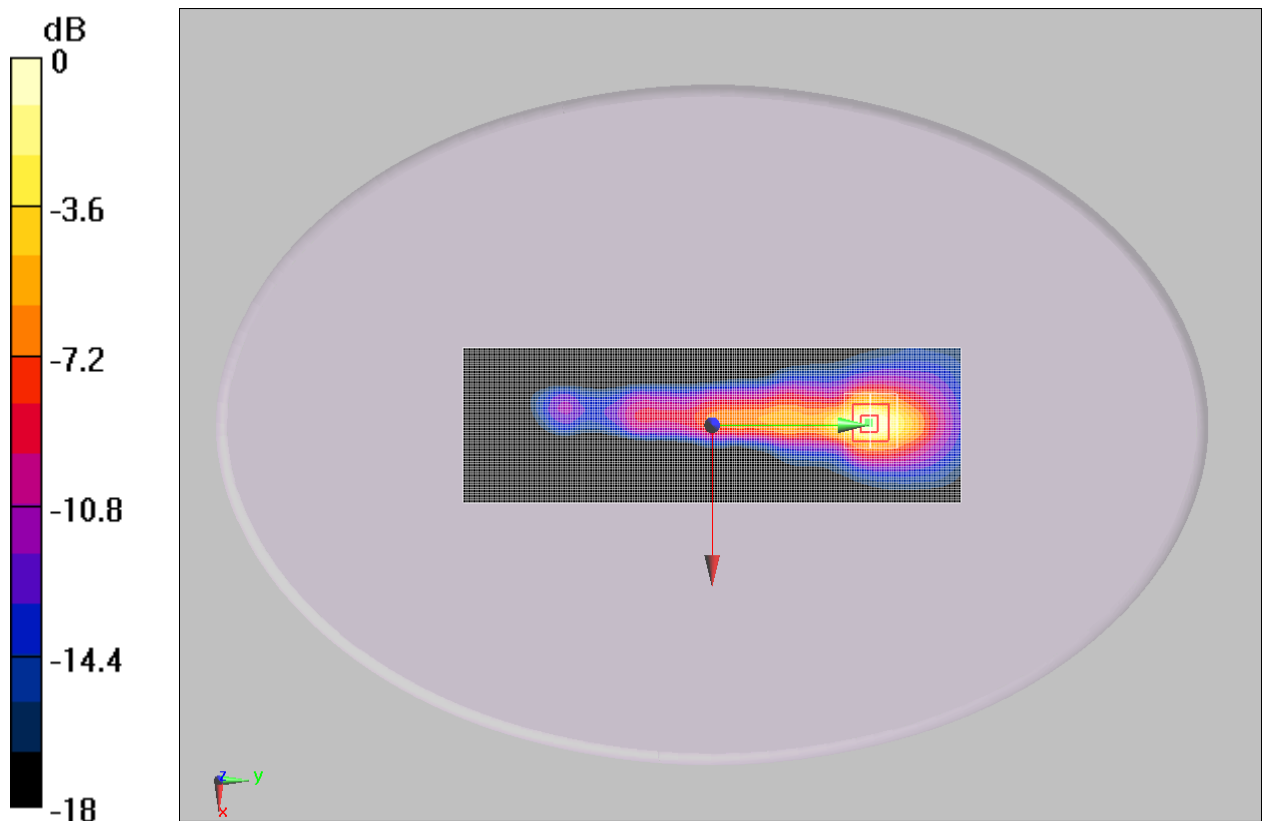
Measurement grid: dx=5mm, dy=5mm, dz=5mm

Reference Value = 5.69 V/m; Power Drift = 0.151 dB

Peak SAR (extrapolated) = 0.698 W/kg

SAR(1 g) = 0.326 mW/g; SAR(10 g) = 0.153 mW/g

Maximum value of SAR (measured) = 0.362 mW/g



0 dB = 0.362mW/g

Fig.5 2450MHz CH6 Test Position 5-WiFi 802.11b 1Mbps

WiFi 802.11b 2450MHz Test Position 6 Middle 1Mbps

Date/Time: 3/11/2010 11:58:17

Electronics: DAE4 Sn786

Medium: Body2450

Medium parameters used (interpolated): $f = 2437$ MHz; $\sigma = 1.97$ mho/m; $\epsilon_r = 50$;
 $\rho = 1000$ kg/m³

Ambient Temperature: 23.3°C

Liquid Temperature: 22.5°C

Communication System: WiFi 802.11 b Frequency: 2437 MHz Duty Cycle: 1:1

Probe: EX3DV4 - SN3617 ConvF(6.88, 6.88, 6.88)

Test position 6_Channel Middle_1Mbps/Area Scan (61x201x1): Measurement

grid: dx=10mm, dy=10mm

Maximum value of SAR (interpolated) = 0.350 mW/g

Test position 6_Channel Middle_1Mbps/Zoom Scan (7x7x7)/Cube 0:

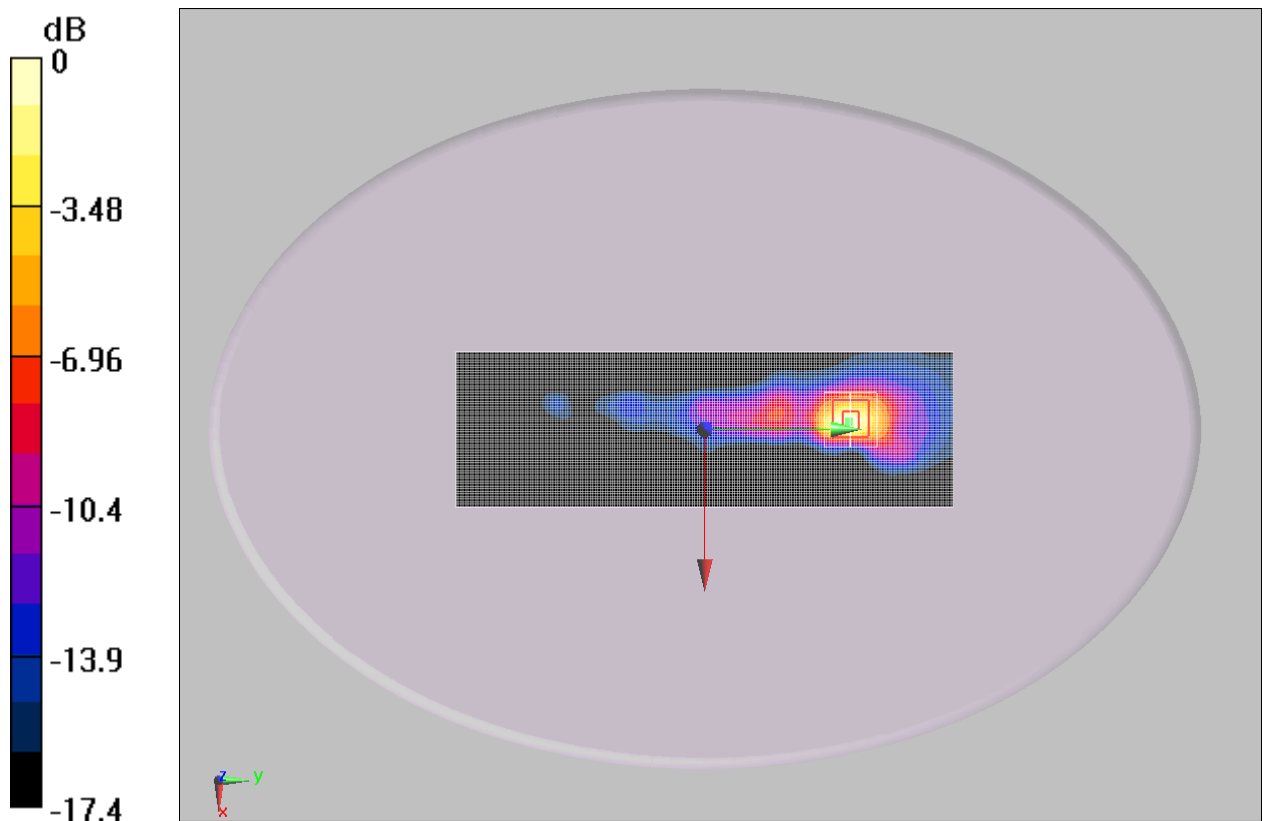
Measurement grid: dx=5mm, dy=5mm, dz=5mm

Reference Value = 2.05 V/m; Power Drift = 0.184 dB

Peak SAR (extrapolated) = 0.750 W/kg

SAR(1 g) = 0.310 mW/g; SAR(10 g) = 0.129 mW/g

Maximum value of SAR (measured) = 0.362 mW/g



0 dB = 0.362mW/g

Fig.6 2450MHz CH6 Test Position 6-WiFi 802.11b 1Mbps

WiFi 802.11b 2450MHz Test Position 3 Top 1Mbps

Date/Time: 3/11/2010 12:24:08

Electronics: DAE4 Sn786

Medium: Body2450

Medium parameters used (interpolated): $f = 2462$ MHz; $\sigma = 2.01$ mho/m; $\epsilon_r = 50$; $\rho = 1000$ kg/m³

Ambient Temperature: 23.3°C

Liquid Temperature: 22.5°C

Communication System: WiFi 802.11 b Frequency: 2462 MHz Duty Cycle: 1:1

Probe: EX3DV4 - SN3617 ConvF(6.88, 6.88, 6.88)

Test position 3_Channel Top_1Mbps/Area Scan (141x201x1): Measurement

grid: dx=10mm, dy=10mm

Maximum value of SAR (interpolated) = 0.621 mW/g

Test position 3_Channel Top_1Mbps/Zoom Scan (7x7x7)/Cube 0: Measurement

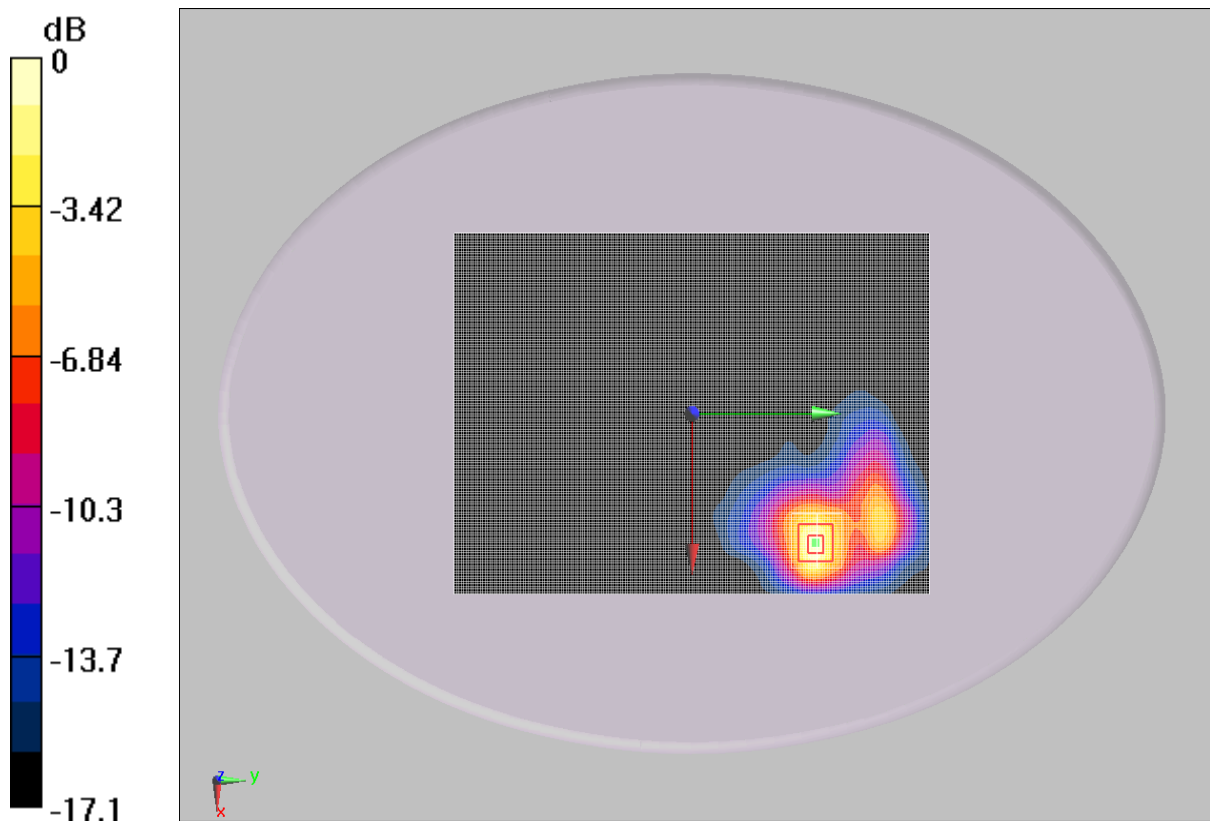
grid: dx=5mm, dy=5mm, dz=5mm

Reference Value = 1.05 V/m; Power Drift = 0.105 dB

Peak SAR (extrapolated) = 1.42 W/kg

SAR(1 g) = 0.585 mW/g; SAR(10 g) = 0.269 mW/g

Maximum value of SAR (measured) = 0.668 mW/g



0 dB = 0.668mW/g

Fig.7 2450MHz CH11 Test Position 3-WiFi 802.11b 1Mbps

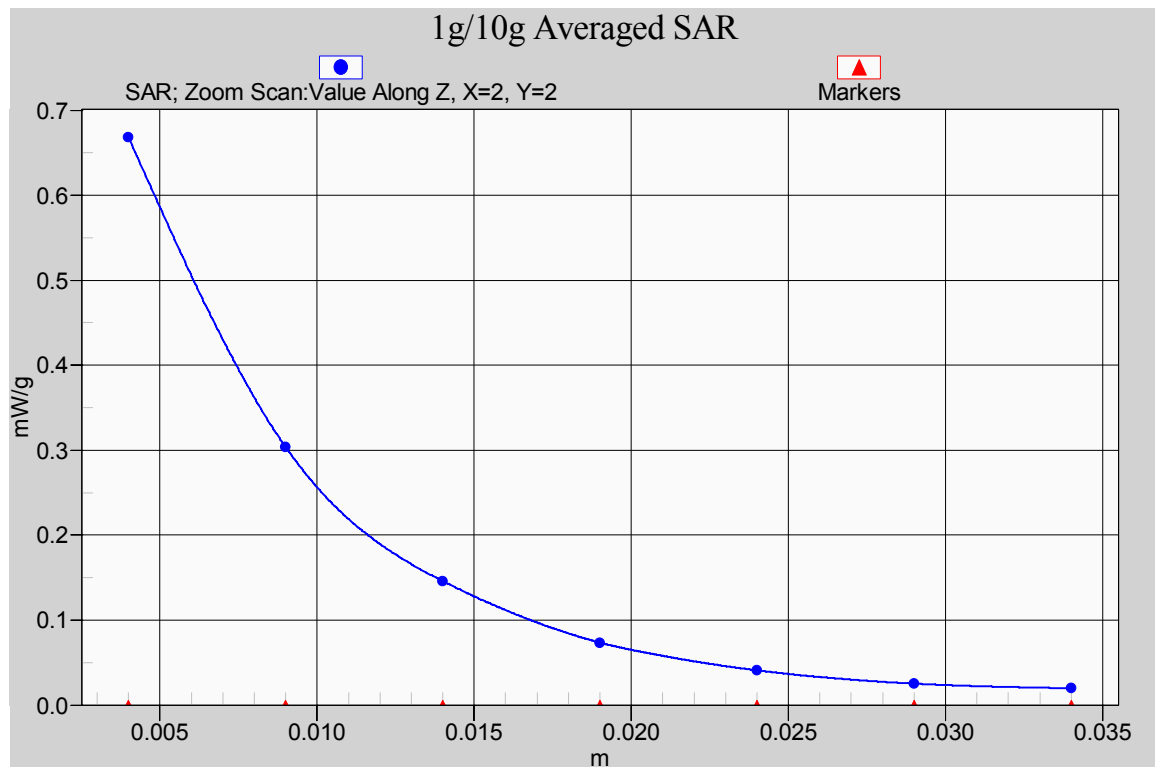


Fig.7-1 Z-Scan at power reference point (2450MHz CH11 Test Position 3-WiFi 802.11b 1Mbps)

WiFi 802.11b 2450MHz Test Position 3 Bottom 1Mbps

Date/Time: 3/11/2010 12:58:41

Electronics: DAE4 Sn786

Medium: Body2450

Medium parameters used (interpolated): $f = 2412$ MHz; $\sigma = 1.95$ mho/m; $\epsilon_r = 50.1$; $\rho = 1000$ kg/m³

Ambient Temperature: 23.3°C

Liquid Temperature: 22.5°C

Communication System: WiFi 802.11 b Frequency: 2412 MHz Duty Cycle: 1:1

Probe: EX3DV4 - SN3617 ConvF(6.88, 6.88, 6.88)

Test position 3_Channel Bottom_1Mbps/Area Scan (141x201x1): Measurement

grid: dx=10mm, dy=10mm

Maximum value of SAR (interpolated) = 0.556 mW/g

Test position 3_Channel Bottom_1Mbps/Zoom Scan (7x7x7)/Cube 0:

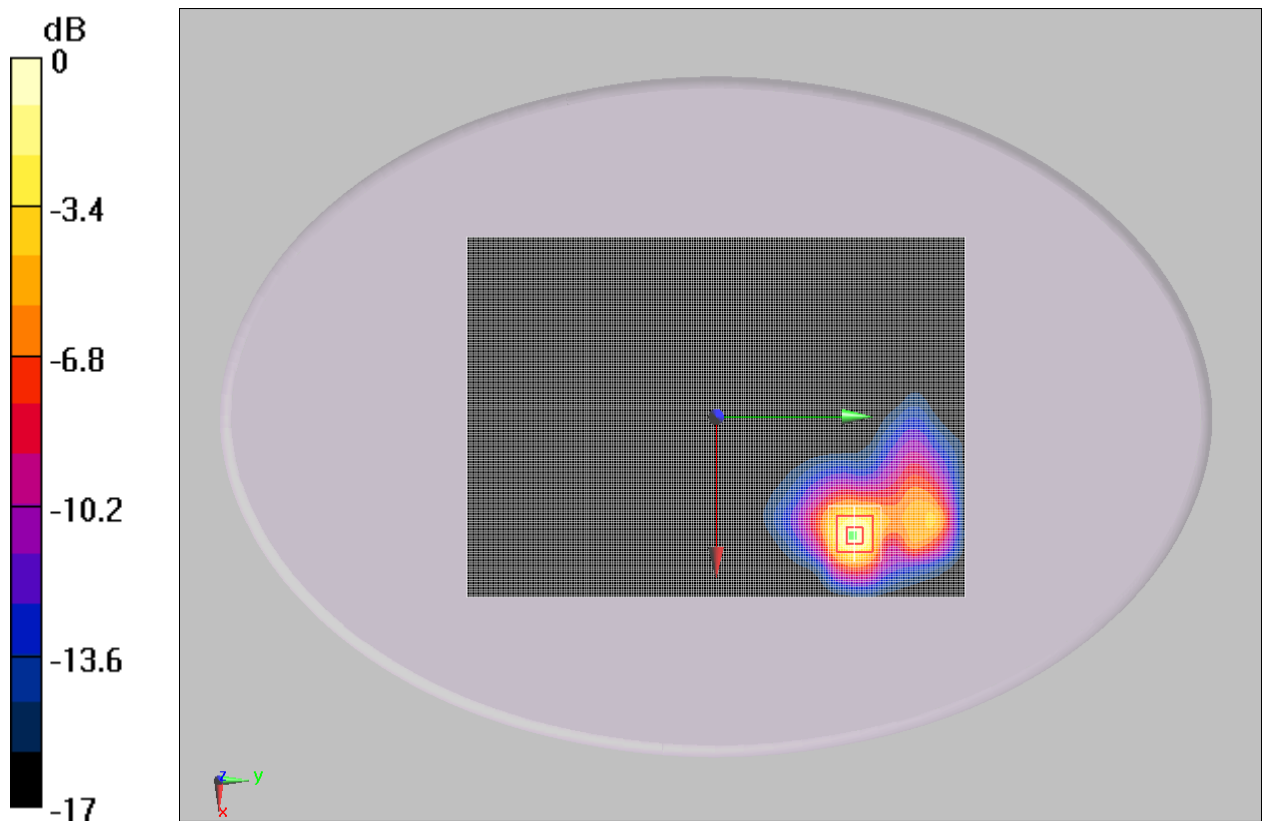
Measurement grid: dx=5mm, dy=5mm, dz=5mm

Reference Value = 2.3 V/m; Power Drift = 0.136 dB

Peak SAR (extrapolated) = 1.16 W/kg

SAR(1 g) = 0.490 mW/g; SAR(10 g) = 0.225 mW/g

Maximum value of SAR (measured) = 0.569 mW/g



0 dB = 0.569mW/g

Fig.8 2450MHz CH1 Test Position 3-WiFi 802.11b 1Mbps

WiFi 802.11nHT20 2450MHz Test Position 3 Middle 6.5Mbps

Date/Time: 3/12/2010 8:41:59

Electronics: DAE4 Sn786

Medium: Body2450

Medium parameters used (interpolated): $f = 2437$ MHz; $\sigma = 1.97$ mho/m; $\epsilon_r = 50$;
 $\rho = 1000$ kg/m³

Ambient Temperature: 23.3°C

Liquid Temperature: 22.5°C

Communication System: WiFi 802.11 nHT20 Frequency: 2437 MHz Duty Cycle: 1:1

Probe: EX3DV4 - SN3617 ConvF(6.88, 6.88, 6.88)

Test position 3_Channel Middle_6.5Mbps/Area Scan (141x201x1):

Measurement grid: dx=10mm, dy=10mm

Maximum value of SAR (interpolated) = 0.294 mW/g

Test position 3_Channel Middle_6.5Mbps/Zoom Scan (7x7x7)/Cube 0:

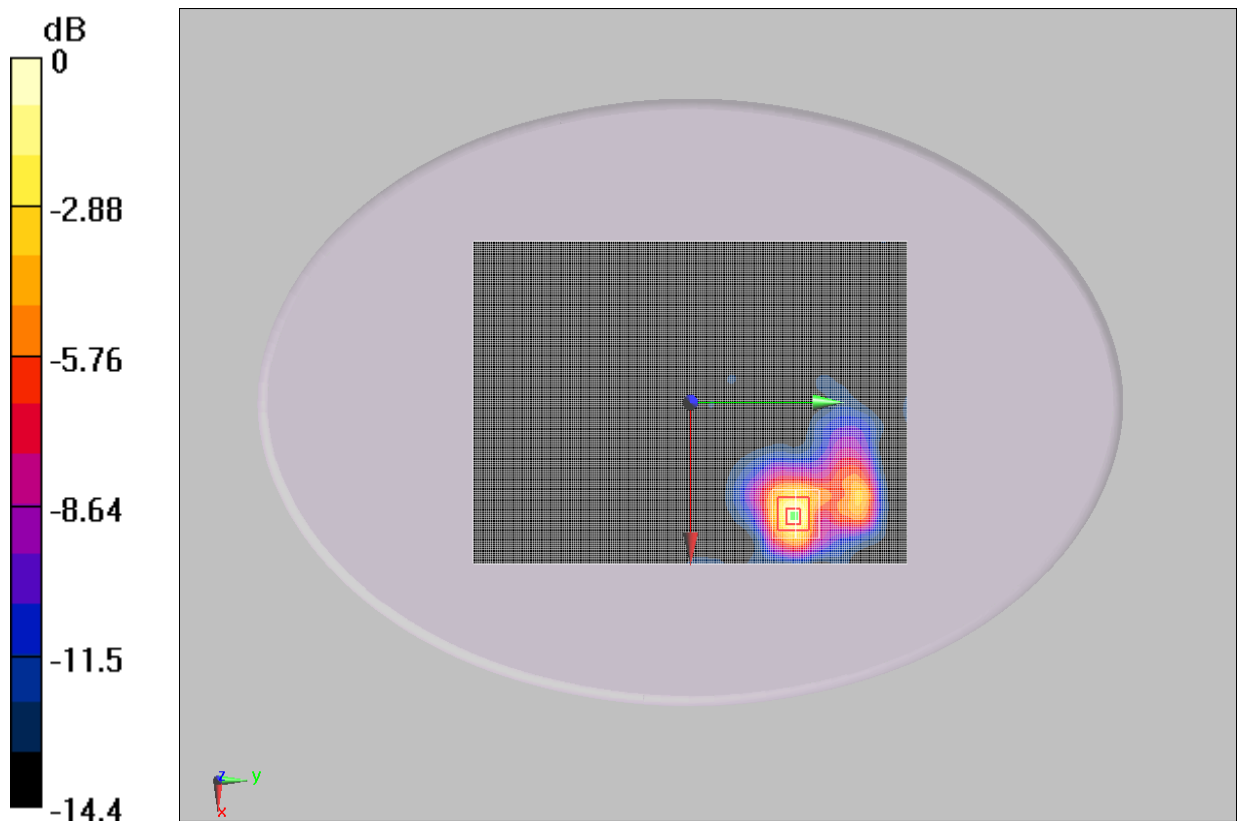
Measurement grid: dx=5mm, dy=5mm, dz=5mm

Reference Value = 0.948 V/m; Power Drift = 0.18 dB

Peak SAR (extrapolated) = 0.634 W/kg

SAR(1 g) = 0.274 mW/g; SAR(10 g) = 0.131 mW/g

Maximum value of SAR (measured) = 0.308 mW/g



0 dB = 0.308mW/g

Fig.9 2450MHz CH6 Test Position 3-WiFi 802.11nHT20 6.5Mbps

WiFi 802.11nHT20 2450MHz Test Position 3 Top 6.5Mbps

Date/Time: 3/12/2010 9:28:11

Electronics: DAE4 Sn786

Medium: Body2450

Medium parameters used (interpolated): $f = 2462$ MHz; $\sigma = 2.01$ mho/m; $\epsilon_r = 50$;
 $\rho = 1000$ kg/m³

Ambient Temperature: 23.3°C

Liquid Temperature: 22.5°C

Communication System: WiFi 802.11 nHT20 Frequency: 2462 MHz Duty Cycle: 1:1

Probe: EX3DV4 - SN3617 ConvF(6.88, 6.88, 6.88)

Test position 3_Channel Top_6.5Mbps/Area Scan (141x201x1): Measurement

grid: dx=15mm, dy=15mm

Maximum value of SAR (interpolated) = 0.199 mW/g

Test position 3_Channel Top_6.5Mbps/Zoom Scan (7x7x7)/Cube 0:

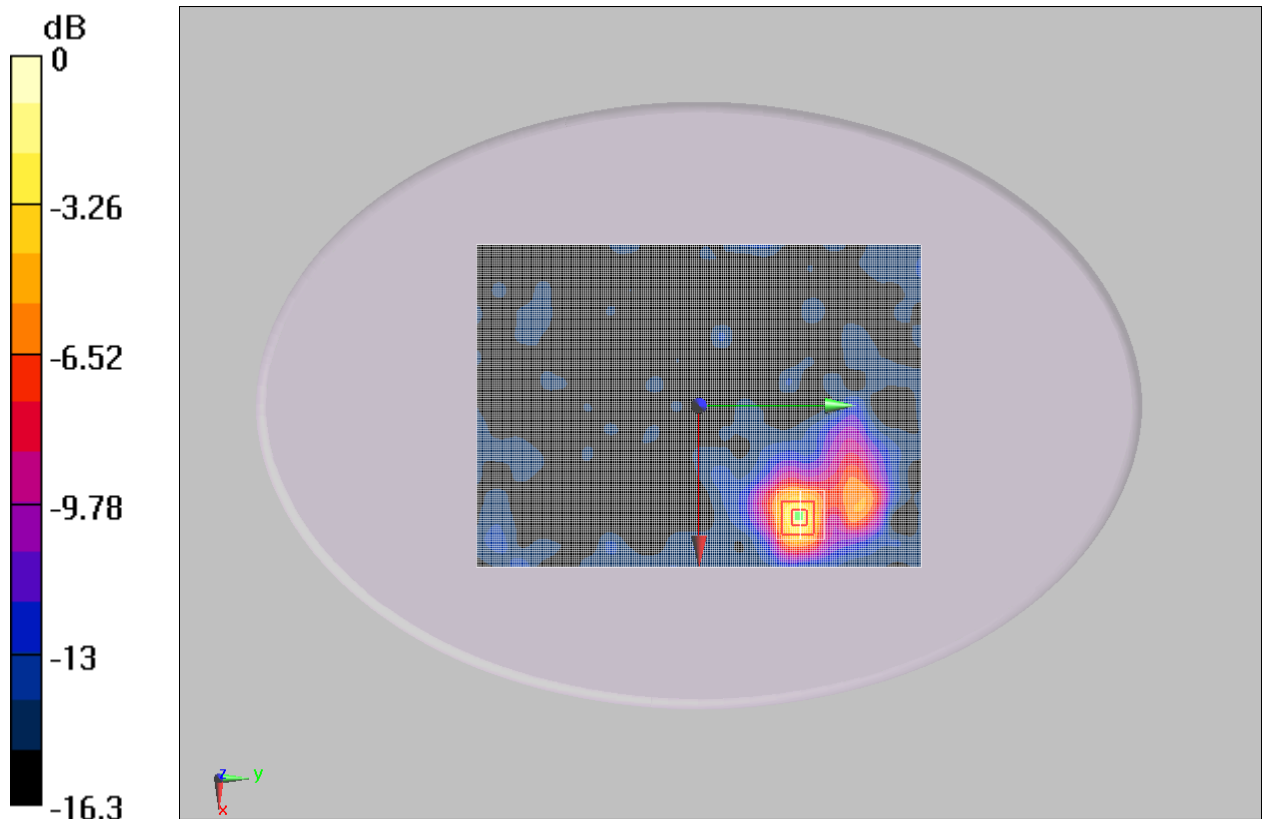
Measurement grid: dx=5mm, dy=5mm, dz=5mm

Reference Value = 0.955 V/m; Power Drift = 0.192 dB

Peak SAR (extrapolated) = 0.601 W/kg

SAR(1 g) = 0.261 mW/g; SAR(10 g) = 0.123 mW/g

Maximum value of SAR (measured) = 0.297 mW/g



0 dB = 0.297mW/g

Fig.10 2450MHz CH11 Test Position 3-WiFi 802.11nHT20 6.5Mbps

WiFi 802.11nHT20 2450MHz Test Position 3 Bottom 6.5Mbps

Date/Time: 3/12/2010 10:07:39

Electronics: DAE4 Sn786

Medium: Body2450

Medium parameters used (interpolated): $f = 2412$ MHz; $\sigma = 1.95$ mho/m; $\epsilon_r = 50.1$; $\rho = 1000$ kg/m³

Ambient Temperature: 23.3°C

Liquid Temperature: 22.5°C

Communication System: WiFi 802.11 nHT20 Frequency: 2412 MHz Duty Cycle: 1:1

Probe: EX3DV4 - SN3617 ConvF(6.88, 6.88, 6.88)

Test position 3_Channel Bottom_6.5Mbps/Area Scan (141x201x1):

Measurement grid: dx=10mm, dy=10mm

Maximum value of SAR (interpolated) = 0.218 mW/g

Test position 3_Channel Bottom_6.5Mbps/Zoom Scan (7x7x7)/Cube 0:

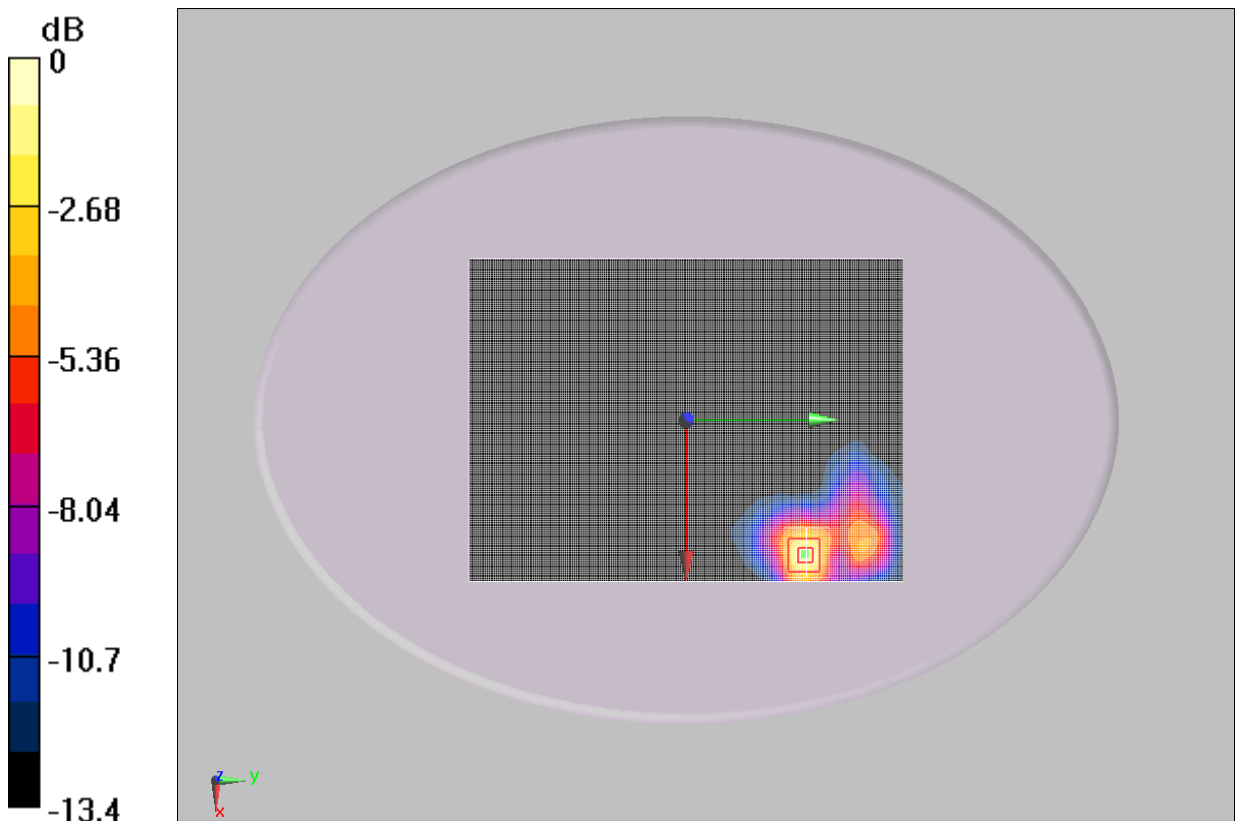
Measurement grid: dx=5mm, dy=5mm, dz=5mm

Reference Value = 1.09 V/m; Power Drift = 0.102 dB

Peak SAR (extrapolated) = 0.521 W/kg

SAR(1 g) = 0.220 mW/g; SAR(10 g) = 0.105 mW/g

Maximum value of SAR (measured) = 0.252 mW/g



0 dB = 0.252mW/g

Fig.11 2450MHz CH1 Test Position 3-WiFi 802.11nHT20 6.5Mbps

WiFi 802.11nHT40 2450MHz Test Position 3 Middle 13.5Mbps

Date/Time: 3/12/2010 11:23:36

Electronics: DAE4 Sn786

Medium: Body2450

Medium parameters used (interpolated): $f = 2437$ MHz; $\sigma = 1.97$ mho/m; $\epsilon_r = 50$;
 $\rho = 1000$ kg/m³

Ambient Temperature: 23.3°C

Liquid Temperature: 22.5°C

Communication System: WiFi 802.11 n HT40 Frequency: 2437 MHz Duty Cycle: 1:1

Probe: EX3DV4 - SN3617 ConvF(6.88, 6.88, 6.88)

Test position 3_Channel Middle_13.5Mbps/Area Scan (141x201x1):

Measurement grid: dx=10mm, dy=10mm

Maximum value of SAR (interpolated) = 0.174 mW/g

Test position 3_Channel Middle_13.5Mbps/Zoom Scan (7x7x7)/Cube 0:

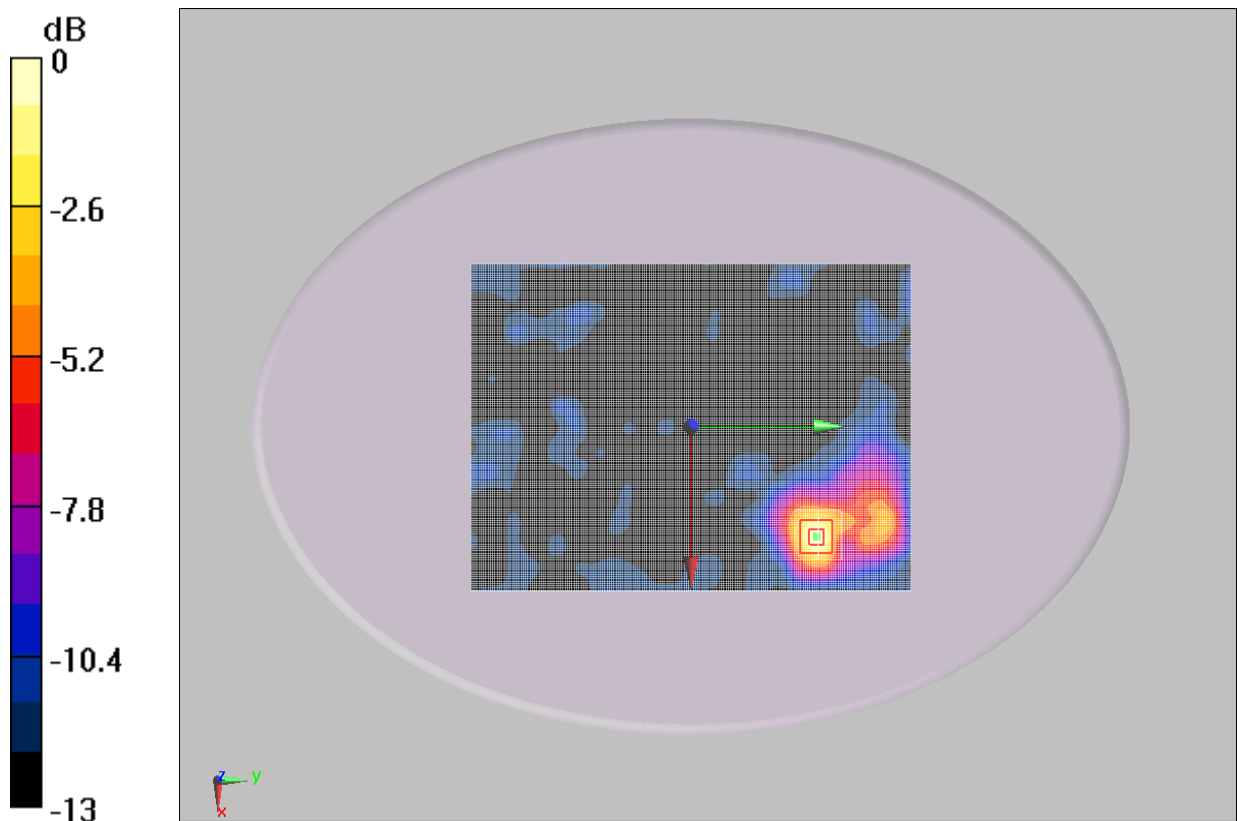
Measurement grid: dx=5mm, dy=5mm, dz=5mm

Reference Value = 1.8 V/m; Power Drift = 0.157 dB

Peak SAR (extrapolated) = 0.354 W/kg

SAR(1 g) = 0.159 mW/g; SAR(10 g) = 0.079 mW/g

Maximum value of SAR (measured) = 0.179 mW/g



0 dB = 0.179mW/g

Fig.12 2450MHz CH6 Test Position 3-WiFi 802.11nHT40 13.5Mbps

WiFi 802.11nHT40 2450MHz Test Position 3 Top 13.5Mbps

Date/Time: 3/12/2010 11:57:03

Electronics: DAE4 Sn786

Medium: Body2450

Medium parameters used (interpolated): $f = 2452$ MHz; $\sigma = 2$ mho/m; $\epsilon_r = 50$; $\rho = 1000$ kg/m³

Ambient Temperature: 23.3°C

Liquid Temperature: 22.5°C

Communication System: WiFi 802.11 n HT40 Frequency: 2452 MHz Duty Cycle: 1:1

Probe: EX3DV4 - SN3617 ConvF(6.88, 6.88, 6.88)

Test position 3_Channel Top_13.5Mbps/Area Scan (141x201x1): Measurement

grid: dx=10mm, dy=10mm

Maximum value of SAR (interpolated) = 0.262 mW/g

Test position 3_Channel Top_13.5Mbps/Zoom Scan (7x7x7)/Cube 0:

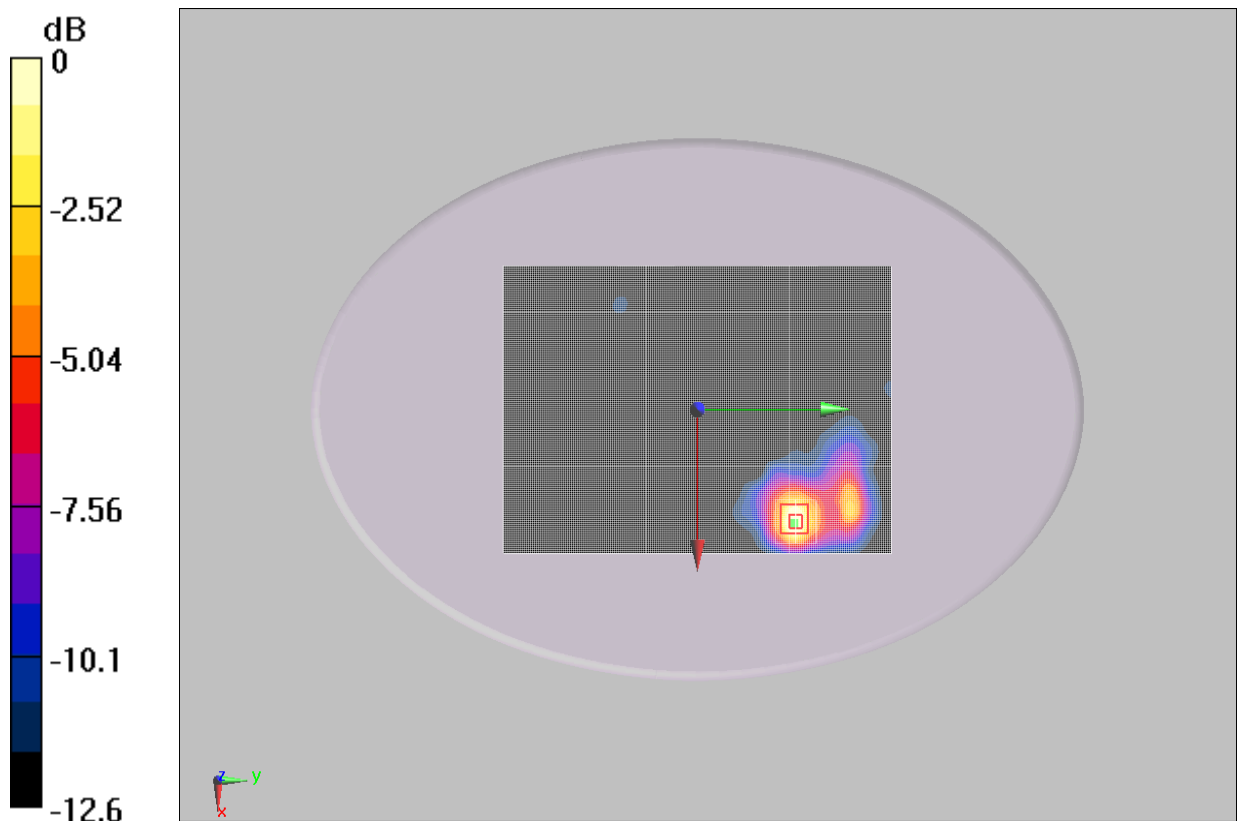
Measurement grid: dx=5mm, dy=5mm, dz=5mm

Reference Value = 2.09 V/m; Power Drift = 0.158 dB

Peak SAR (extrapolated) = 0.507 W/kg

SAR(1 g) = 0.205 mW/g; SAR(10 g) = 0.101 mW/g

Maximum value of SAR (measured) = 0.221 mW/g



0 dB = 0.221mW/g

Fig.13 2450MHz CH9 Test Position 3-WiFi 802.11nHT40 13.5Mbps

WiFi 802.11nHT40 2450MHz Test Position 3 Bottom 13.5Mbps

Date/Time: 3/12/2010 12:41:19

Electronics: DAE4 Sn786

Medium: Body2450

Medium parameters used (interpolated): $f = 2422$ MHz; $\sigma = 1.96$ mho/m; $\epsilon_r = 50.1$; $\rho = 1000$ kg/m³

Ambient Temperature: 23.3°C

Liquid Temperature: 22.5°C

Communication System: WiFi 802.11 n HT40 Frequency: 2422 MHz Duty Cycle: 1:1

Probe: EX3DV4 - SN3617 ConvF(6.88, 6.88, 6.88)

Test position 3_Channel Bottom_13.5Mbps/Area Scan (141x201x1):

Measurement grid: dx=10mm, dy=10mm

Maximum value of SAR (interpolated) = 0.250 mW/g

Test position 3_Channel Bottom_13.5Mbps/Zoom Scan (7x7x7)/Cube 0:

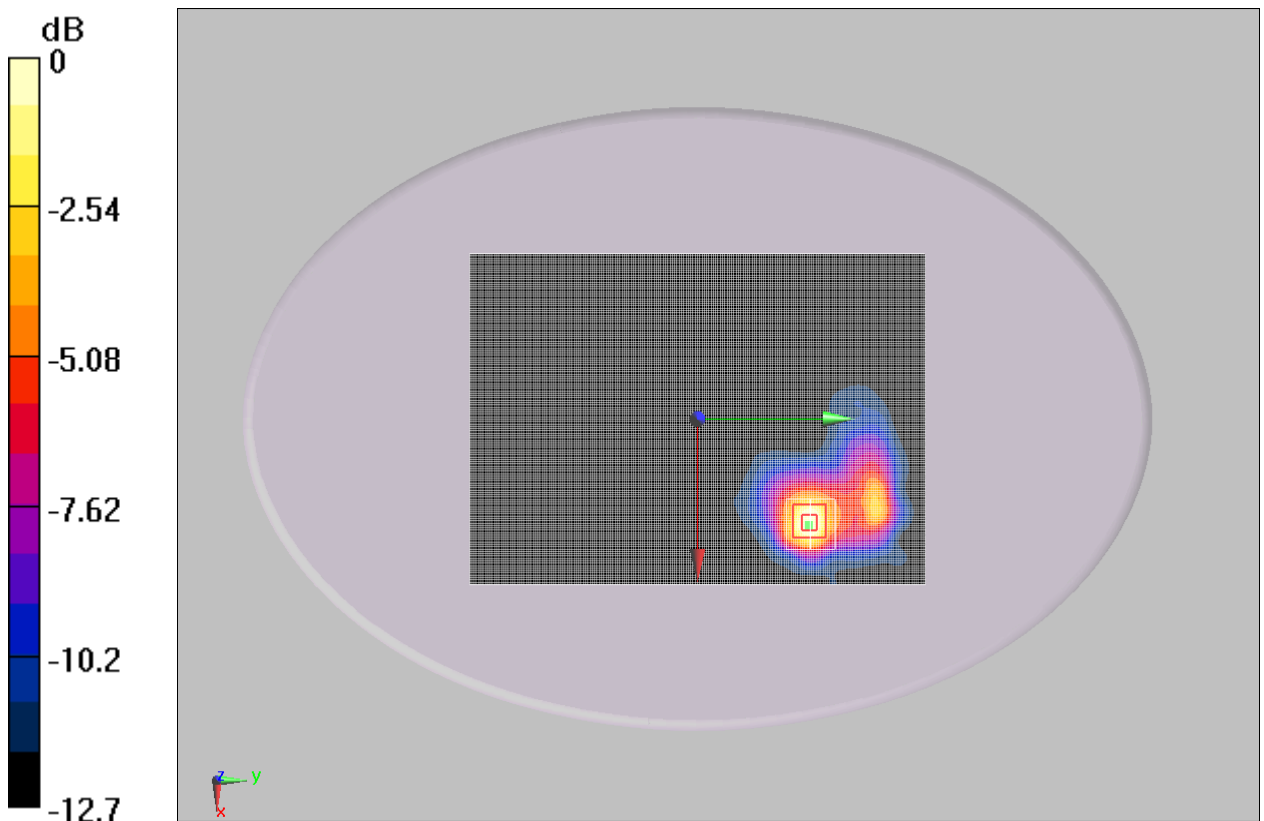
Measurement grid: dx=5mm, dy=5mm, dz=5mm

Reference Value = 2.05 V/m; Power Drift = 0.109 dB

Peak SAR (extrapolated) = 0.446 W/kg

SAR(1 g) = 0.197 mW/g; SAR(10 g) = 0.098 mW/g

Maximum value of SAR (measured) = 0.217 mW/g



0 dB = 0.217mW/g

Fig.14 2450MHz CH3 Test Position 3-WiFi 802.11nHT40 13.5Mbps

ANNEX D SYSTEM VALIDATION RESULTS

2450MHz

Date/Time: 3/11/2010 8:03:17

Electronics: DAE4 Sn786

Medium: 2450 Head

Medium parameters used: $\sigma = 1.83$ mho/m; $\epsilon_r = 38.9$; $\rho = 1000$ kg/m³

Ambient Temperature: 23.3°C Liquid Temperature: 22.3°C

Communication System: CW Frequency: 2450 MHz Duty Cycle: 1:1

Probe: EX3DV4 - SN3617 ConvF (7.19, 7.19, 7.19)

System Validation/Area Scan (101x101x1): Measurement grid: dx=10mm, dy=10mm

Maximum value of SAR (interpolated) = 13.9 mW/g

System Validation/Zoom Scan (7x7x7)/Cube 0: Measurement grid: dx=5mm, dy=5mm, dz=5mm

Reference Value = 86.1 V/m; Power Drift = -0.1 dB

Peak SAR (extrapolated) = 18.8 W/kg

SAR(1 g) = 12.8 mW/g; SAR(10 g) = 5.78 mW/g

Maximum value of SAR (measured) = 14.1 mW/g

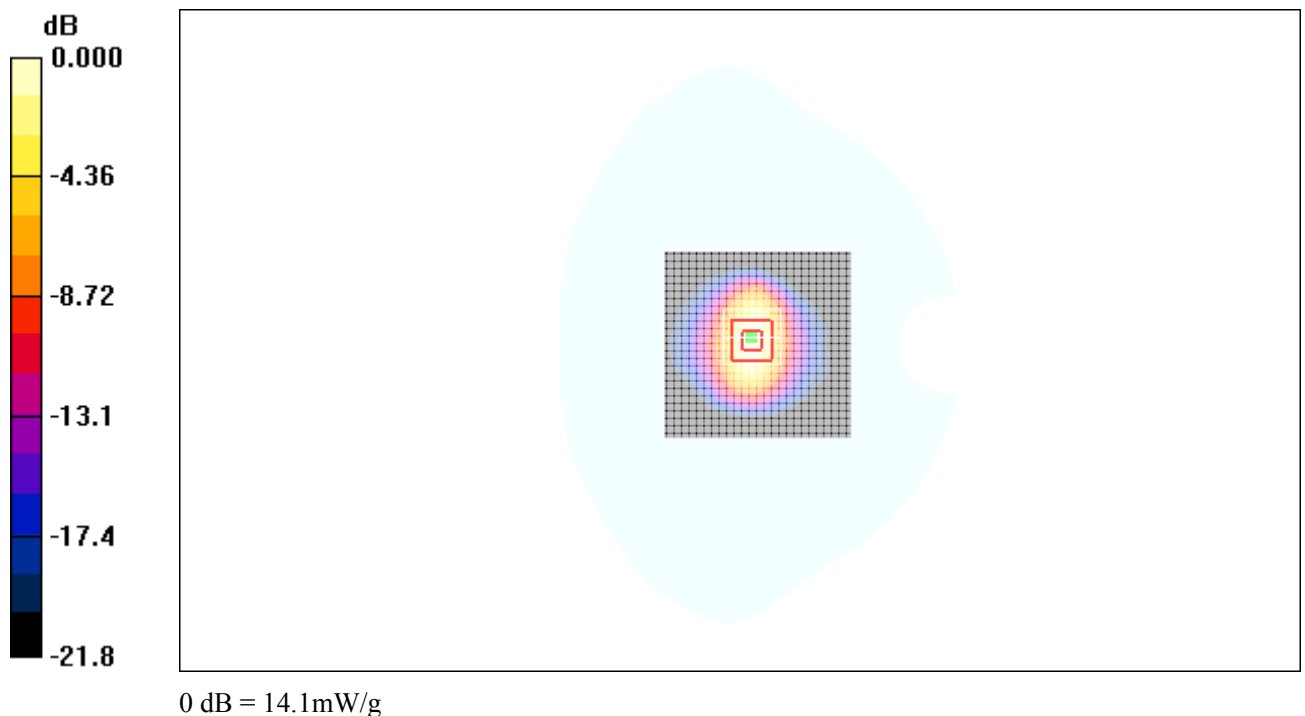


Fig.15 validation 2450MHz 250Mw

2450MHz

Date/Time: 3/12/2010 8:05:31

Electronics: DAE4 Sn786

Medium: 2450 Head

Medium parameters used: $\sigma = 1.83$ mho/m; $\epsilon_r = 38.5$; $\rho = 1000$ kg/m³

Ambient Temperature: 23.3°C Liquid Temperature: 22.3°C

Communication System: CW Frequency: 2450 MHz Duty Cycle: 1:1

Probe: EX3DV4 - SN3617 ConvF (7.19, 7.19, 7.19)

System Validation/Area Scan (101x101x1): Measurement grid: dx=10mm, dy=10mm

Maximum value of SAR (interpolated) = 13.92 mW/g

System Validation/Zoom Scan (7x7x7)/Cube 0: Measurement grid: dx=5mm, dy=5mm, dz=5mm

Reference Value = 86.3 V/m; Power Drift = -0.1 dB

Peak SAR (extrapolated) = 18.87 W/kg

SAR(1 g) = 12.86 mW/g; SAR(10 g) = 5.81 mW/g

Maximum value of SAR (measured) = 14.2 mW/g

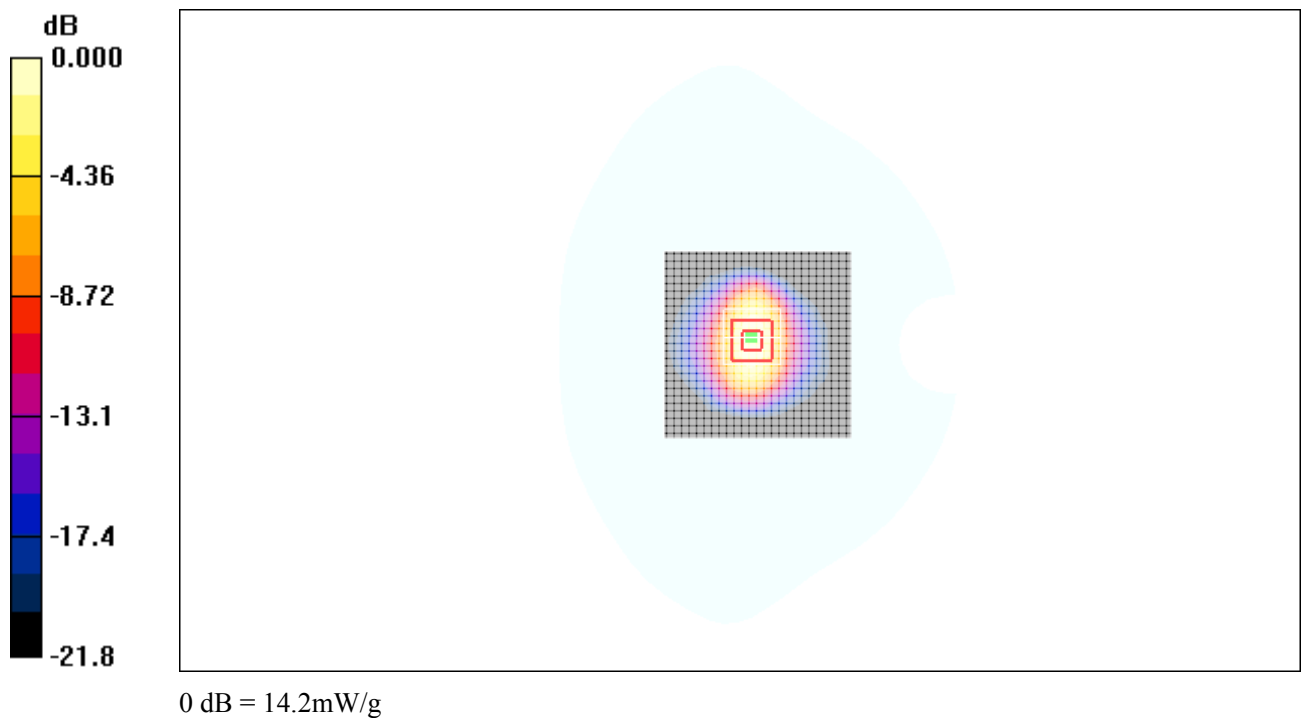


Fig.16 validation 2450MHz 250mW

ANNEX E PROBE CALIBRATION CERTIFICATE

**Calibration Laboratory of
Schmid & Partner
Engineering AG**
Zeughausstrasse 43, 8004 Zurich, Switzerland



S Schweizerischer Kalibrierdienst
C Service suisse d'étalonnage
S Servizio svizzero di taratura
S Swiss Calibration Service

Accredited by the Swiss Accreditation Service (SAS)
The Swiss Accreditation Service is one of the signatories to the EA
Multilateral Agreement for the recognition of calibration certificates

Accreditation No.: **SCS 108**

Client **TMC China**

Certificate No: **EX3DV4-3617_Jul09**

CALIBRATION CERTIFICATE


Object	EX3DV4-SN: 3617
Calibration procedure(s)	QA CAL-01.v6 Calibration procedure for dosimetric E-field probes
Calibration date:	July 9, 2009
Condition of the calibrated item	In Tolerance

This calibration certify documents the traceability to national standards, which realize the physical units of measurements(SI).
The measurements and the uncertainties with confidence probability are given on the following pages and are part of the certificate.
All calibrations have been conducted at an environment temperature (22±3)°C and humidity<70%

Calibration Equipment used (M&TE critical for calibration)

Primary Standards	ID#	Cal Data (Calibrated by, Certification NO.)	Scheduled Calibration
Power meter E4419B	GB41293874	6-May-09 (METAS, NO. 251-00388)	May-10
Power sensor E4412A	MY41495277	6-May-09 (METAS, NO. 251-00388)	May-10
Reference 3 dB Attenuator	SN:S5054 (3c)	12-Aug-08 (METAS, NO. 251-00403)	Aug-09
Reference 20 dB Attenuator	SN:S5086 (20b)	4-May-09 (METAS, NO. 251-00389)	May-10
Reference 30 dB Attenuator	SN:S5129 (30b)	12-Aug-08 (METAS, NO. 251-00404)	Aug-09
DAE4	SN:617	11-Jun-09 (SPEAG, NO.DAE4-907_Jun08)	Jun-10
Reference Probe ES3DV2	SN: 3013	13-Jan-09 (SPEAG, NO. ES3-3013_Jan08)	Jan-10

Secondary Standards	ID#	Check Data (in house)	Scheduled Calibration
RF generator HP8648C	US3642U01700	4-Aug-99(SPEAG, in house check Oct-07)	In house check: Oct-09
Network Analyzer HP 8753E	US37390585	18-Oct-01(SPEAG, in house check Nov-07)	In house check: Nov-09

Name	Function	Signature
Calibrated by: Katja Pokovic	Technical Manager	

Approved by: Niels Kuster	Quality Manager	
---------------------------	-----------------	--

Issued: July 9, 2009

This calibration certificate shall not be reported except in full without written approval of the laboratory.

Certificate No: **EX3DV4-3617_Jul09**

Page 1 of 9

Calibration Laboratory of
Schmid & Partner
Engineering AG
Zaughausstrasse 43, 8004 Zurich, Switzerland



S Schweizerischer Kalibrierdienst
C Service suisse d'étalonnage
S Servizio svizzero di taratura
S Swiss Calibration Service

Accredited by the Swiss Accreditation Service (SAS)
The Swiss Accreditation Service is one of the signatories to the EA
Multilateral Agreement for the recognition of calibration certificates

Accreditation No.: SCS 108

Glossary:

TSL	tissue simulating liquid
NORM _{x,y,z}	sensitivity in free space
ConF	sensitivity in TSL / NORM _{x,y,z}
DCP	diode compression point
Polarization ϕ	ϕ rotation around probe axis
Polarization ϑ	ϑ rotation around an axis that is in the plane normal to probe axis (at measurement center), i.e., $\vartheta = 0$ is normal to probe axis

Calibration is Performed According to the Following Standards:

- IEEE Std 1528-2003, "IEEE Recommended Practice for Determining the Peak Spatial-Averaged Specific Absorption Rate (SAR) in the Human Head from Wireless Communications Devices: Measurement Techniques", December 2003
- IEC 62209-1, "Procedure to measure the Specific Absorption Rate (SAR) for hand-held devices used in close proximity to the ear (frequency range of 300 MHz to 3 GHz)", February 2005

Methods Applied and Interpretation of Parameters:

- NORM_{x,y,z}:** Assessed for E-field polarization $\vartheta = 0$ ($f \leq 900$ MHz in TEM-cell; $f > 1800$ MHz: R22 waveguide). NORM_{x,y,z} are only intermediate values, i.e., the uncertainties of NORM_{x,y,z} does not effect the E²-field uncertainty inside TSL (see below *ConvF*).
- NORM(*f*)_{x,y,z} = NORM_{x,y,z} * frequency_response** (see Frequency Response Chart). This linearization is implemented in DASY4 software versions later than 4.2. The uncertainty of the frequency response is included in the stated uncertainty of *ConvF*.
- DCP_{x,y,z}:** DCP are numerical linearization parameters assessed based on the data of power sweep (no uncertainty required). DCP does not depend on frequency nor media.
- ConvF and Boundary Effect Parameters:** Assessed in flat phantom using E-field (or Temperature Transfer Standard for $f \leq 800$ MHz) and inside waveguide using analytical field distributions based on power measurements for $f > 800$ MHz. The same setups are used for assessment of the parameters applied for boundary compensation (alpha, depth) of which typical uncertainty values are given. These parameters are used in DASY4 software to improve probe accuracy close to the boundary. The sensitivity in TSL corresponds to NORM_{x,y,z} * *ConvF* whereby the uncertainty corresponds to that given for *ConvF*. A frequency dependent *ConvF* is used in DASY version 4.4 and higher which allows extending the validity from ± 50 MHz to ± 100 MHz.
- Spherical isotropy (3D deviation from isotropy):** in a field of low gradients realized using a flat phantom exposed by a patch antenna.
- Sensor Offset:** The sensor offset corresponds to the offset of virtual measurement center from the probe tip (on probe axis). No tolerance required.

EX3DV4 SN: 3617

July 9, 2009

Probe EX3DV4

SN: 3617

Manufactured: May 3, 2007

Calibrated: July 9, 2009

Calibrated for DASY4 System

EX3DV4 SN: 3617

July 9, 2009

DASY – Parameters of Probe: EX3DV4 SN:3617

Sensitivity in Free Space^A

Diode Compression^B

NormX	0.420±10.1%	$\mu V/(V/m)^2$	DCP X	89mV
NormY	0.440±10.1%	$\mu V/(V/m)^2$	DCP Y	88mV
NormZ	0.310±10.1%	$\mu V/(V/m)^2$	DCP Z	91mV

Sensitivity in Tissue Simulating Liquid (Conversion Factors)
Please see Page 8

Boundary Effect

TSL 2450MHz Typical SAR gradient: 11% per mm

Sensor Center to Phantom Surface Distance	2.0 mm	3.0 mm
SARbe[%] Without Correction Algorithm	3.7	1.8
SARbe[%] With Correction Algorithm	0.1	0.0

TSL 5200MHz Typical SAR gradient: 25% per mm

Sensor Center to Phantom Surface Distance	2.0 mm	3.0 mm
SARbe[%] Without Correction Algorithm	10.1	3.7
SARbe[%] With Correction Algorithm	0.2	0.1

Sensor Offset

Probe Tip to Sensor Center 1.0 mm

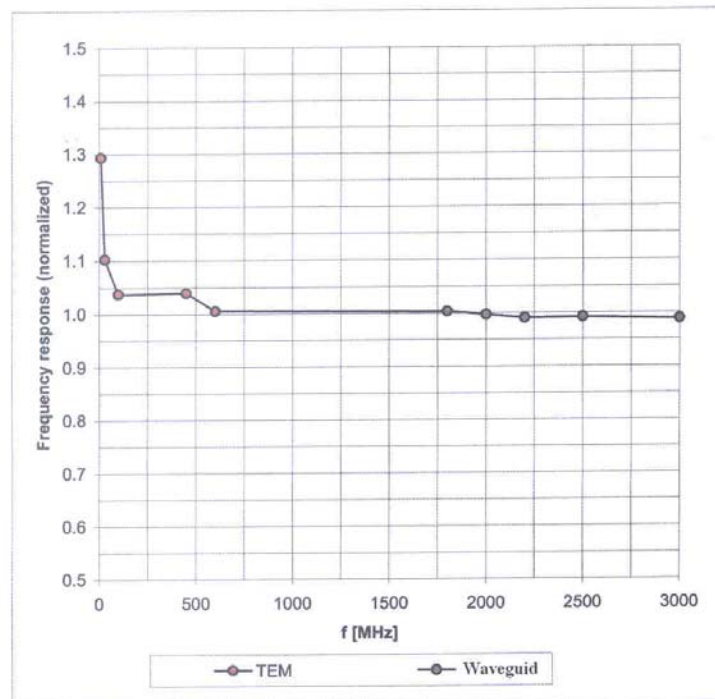
The reported uncertainty of measurement is stated as the standard uncertainty of Measurement multiplied by the coverage factor k=2, which for a normal distribution corresponds to a coverage probability of approximately 95%.

^A The uncertainties of NormX,Y,Z do not affect the E²-field uncertainty inside TSL (see Page 8).
^B Numerical linearization parameter: uncertainty not required.

EX3DV4 SN: 3617

July 9, 2009

Frequency Response of E-Field

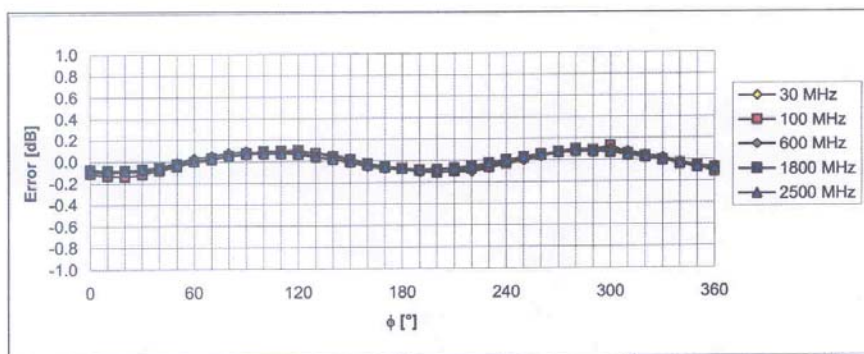
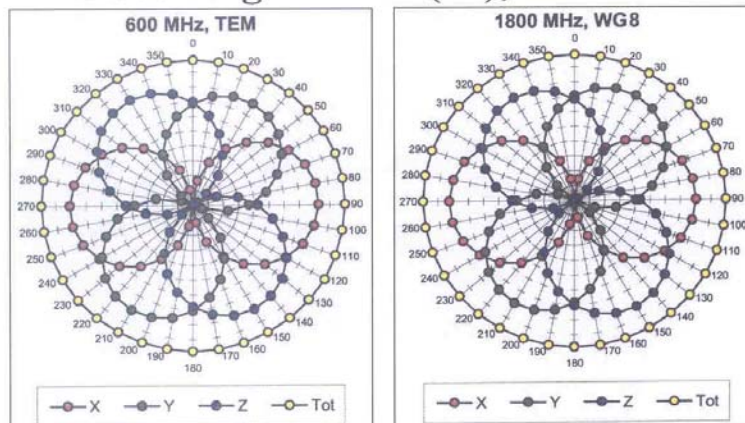


Uncertainty of Frequency Response of E-field: $\pm 6.3\%$ (k=2)

EX3DV4 SN: 3617

July 9, 2009

Receiving Pattern (ϕ), $\theta = 0^\circ$

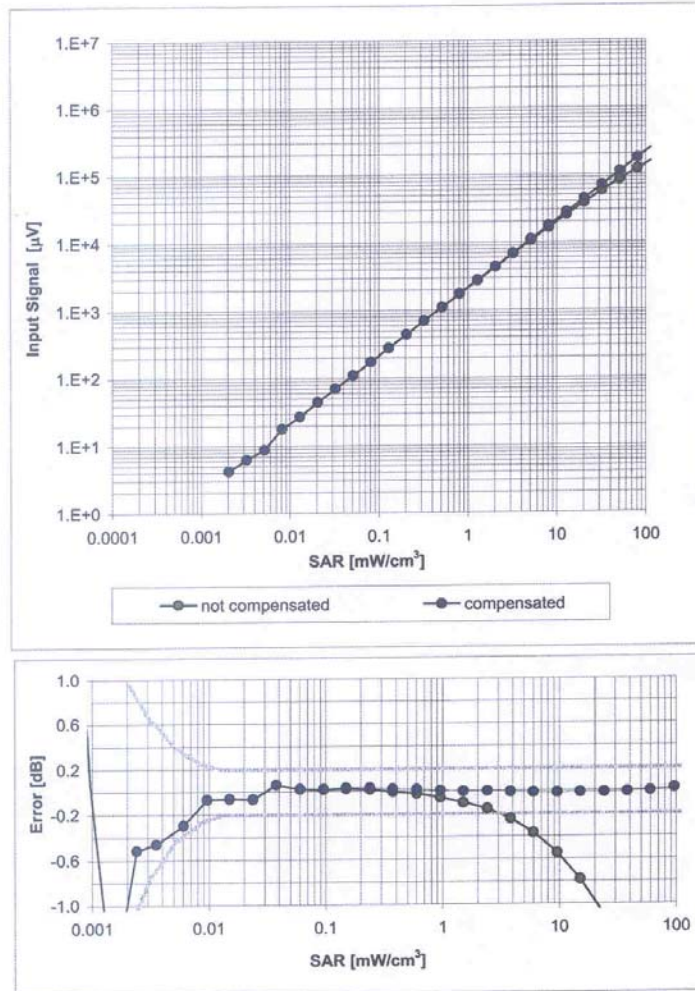


Uncertainty of Axial Isotropy Assessment: $\pm 0.5\%$ ($k=2$)

EX3DV4 SN: 3617

July 9, 2009

Dynamic Range $f(\text{SAR}_{\text{head}})$ (Waveguide: WG8, $f = 1800 \text{ MHz}$)

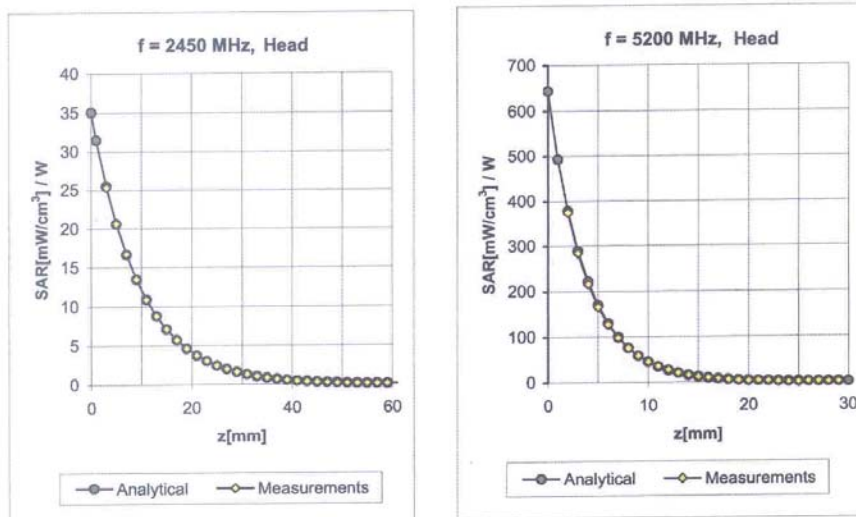


Uncertainty of Linearity Assessment: $\pm 0.6\%$ ($k=2$)

EX3DV4 SN: 3617

July 9, 2009

Conversion Factor Assessment



f[MHz]	Validity[MHz] ^c	TSL	Permittivity	Conductivity	Alpha	Depth	ConvF	Uncertainty
2450	±50 / ±100	Head	39.2±5%	1.80±5%	0.33	1.00	7.19	±11.8% (k=2)
2600	±50 / ±100	Head	39.0±5%	1.96±5%	0.36	1.21	7.16	±11.8% (k=2)
5200	±50 / ±100	Head	36.0±5%	4.66±5%	0.35	1.60	5.33	±13.1% (k=2)
5800	±50 / ±100	Head	35.3±5%	5.27±5%	0.35	1.60	4.69	±13.1% (k=2)
2450	±50 / ±100	Body	52.7±5%	1.95±5%	0.36	1.00	6.88	±11.8% (k=2)
2600	±50 / ±100	Body	52.5±5%	2.16±5%	0.36	1.05	6.84	±11.8% (k=2)
5200	±50 / ±100	Body	49.0±5%	5.30±5%	0.35	1.70	4.64	±13.1% (k=2)
5800	±50 / ±100	Body	48.2±5%	6.00±5%	0.30	1.70	4.53	±13.1% (k=2)

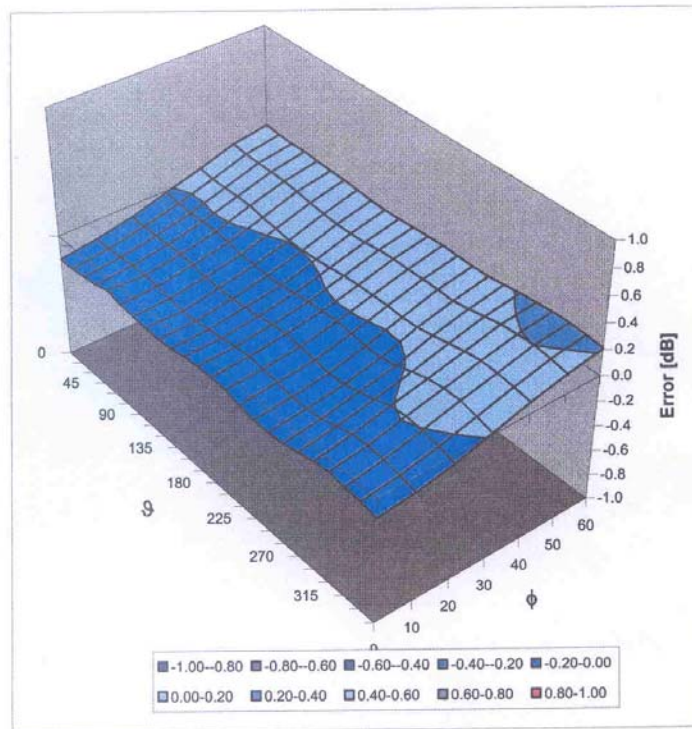
^c The validity of ±100 MHz only applies for DASY v4.4 and higher (see Page 2). The uncertainty is the RSS of the ConvF uncertainty at calibration frequency and the uncertainty for the indicated frequency band.

EX3DV4 SN: 3617

July 9, 2009

Deviation from Isotropy

Error (ϕ , θ), $f = 900$ MHz



Uncertainty of Spherical Isotropy Assessment: $\pm 2.6\%$ ($k=2$)

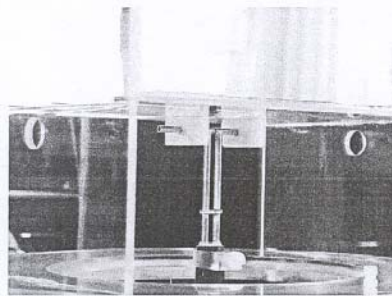
ANNEX F DIPOLE CALIBRATION CERTIFICATE

Report No. SN0102_2450
October 2008

INDEXSAR
2450MHz validation Dipole
Type IXD-245 S/N 0102

Performance measurements

MI Manning



Indexsar, Oakfield House, Cudworth Lane,
Newdigate, Surrey RH5 5BG. UK.
Tel: +44 (0) 1306 633870 Fax: +44 (0) 1306 631834
e-mail: enquiries@indexsar.com

1. Measurement Conditions

Measurements were performed using a box-shaped phantom made of PMMA with dimensions designed to meet the accuracy criteria for reasonably-sized phantoms that do not have liquid capacities substantially in excess of the volume of liquid required to fill the Indexsar upright SAM phantoms used for SAR testing of handsets against the ear.

An HP 8753B vector network analyser was used for the return loss measurements. The dipole was placed in a special holder made of low-permittivity, low-loss materials. This holder enables the dipole to be positioned accurately in the centre of the base of the Indexsar box-phantom used for flat-surface testing and validation checks.

The validation dipoles are supplied with special spacers made from a low-permittivity, low-loss foam material. These spacers are fitted to the dipole arms to ensure that, when the dipole is offered up to the phantom surface, the spacing between the dipole and the liquid surface is accurately aligned according to the guidance in the relevant standards documentation. The spacers are rectangular with a central hole equal to the dipole arm diameter and dimensioned so that the longer side can be used to ensure a spacing of 15mm from the liquid in the phantom (for tests at 900MHz and below) and the shorter side can be used for tests at 1800MHz and above to ensure a spacing of 10mm from the liquid in the phantom. The spacers are made on a CNC milling machine with an accuracy of $1/40^{\text{th}}$ mm but they may suffer wear and tear and need to be replaced periodically. The material used is Rohacell, which has a relative permittivity of approx. 1.05 and a negligible loss tangent.

The apparatus supplied by Indexsar for dipole validation tests thus includes:

Balanced dipoles for each frequency required are dimensioned according to the guidelines given in IEEE 1528 [1]. The dipoles are made from semi-rigid 50 Ohm co-ax, which is joined by soldering and is gold-plated subsequently. The constructed dipoles are easily deformed, if mis-handled, and periodic checks need to be made of their symmetry.

Rohacell foam spacers designed for presenting the dipoles to 2mm thick PMMA box phantoms. These components also suffer wear and tear and should be replaced when the central hole is a loose-fit on the dipole arms or if the edges are too worn to ensure accurate alignment. The standard spacers are dimensioned for use with 2mm wall thickness (additional spacers are available for 4mm wall thickness).

2. Typical SAR Measurement

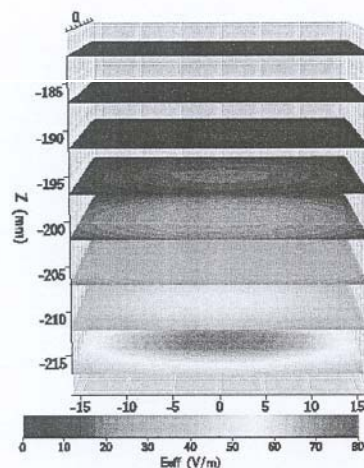
A SAR validation check is performed with the box-phantom located on the SARA2 phantom support base on the SARA2 robot system. Tests are then conducted at a feed power level of approx. 0.25W. The actual power level is recorded and used to normalise the results obtained to the standard input power conditions of 1W (forward power). The ambient temperature is 22°C +/- 1°C and the relative humidity is around 40% during the measurements.

The phantom is filled with a 2450MHz brain liquid using a recipe from [1], which has the following electrical parameters (measured using an Indexsar DiLine kit) at 2450MHz:

Relative Permittivity	40.5
Conductivity	1.85 S/m

The SARA2 software version 2.2 VPM is used with an Indexsar probe previously calibrated using waveguides.

The 3D measurements made using the dipole at the bottom of the phantom box is shown below:



The results, normalised to an input power of 1W (forward power) are typically:

Averaged over 1 cm ³ (1g) of tissue	52.26 W/kg
Averaged over 10cm ³ (10g) of tissue	23.65 W/kg

These results can be compared with Table 8.1 in [1]. The agreement is within 10%.

4. Dipole handling

The dipoles are made from standard, copper-sheathed coaxial cable. In assembly, the sections are joined using ordinary soft-soldering. This is necessary to avoid excessive heat input in manufacture, which would destroy the polythene dielectric used for the cable. The consequence of the construction material and the assembly technique is that the dipoles are fragile and can be deformed by rough handling. Conversely, they can be straightened quite easily as described in this report.

If a dipole is suspected of being deformed, a normal workshop lathe can be used as an alignment jig to restore the symmetry. To do this, the dipole is first placed in the headstock of the lathe (centred on the plastic or brass spacers) and the headstock is rotated by hand (do NOT use the motor). A marker (lathe tool or similar) is brought up close to the end of one dipole arm and then the headstock is rotated by 0.5 rev. to check the opposing arm. If they are not balanced, judicious deformation of the arms can be used to restore the symmetry.

If a dipole has a failed solder joint, the dipole can be fixed down in such a way that the arms are co-linear and the joint re-soldered with a reasonably-powerful electrical soldering iron. Do not use gas soldering irons. After such a repair, electrical tests must be performed as described below.

Please note that, because of their construction, the dipoles are short-circuited for DC signals.

5. Tuning the dipole

The dipole dimensions are based on calculations that assumed specific liquid dielectric properties. If the liquid dielectric properties are somewhat different, the dipole tuning will also vary. A pragmatic way of accounting for variations in liquid properties is to 'tune' the dipole (by applying minor variations to its effective length). For this purpose, Indexsar can supply short brass tube lengths to extend the length of the dipole and thus 'tune' the dipole. It cannot be made shorter without removing a bit from the arm. An alternative way to tune the dipole is to use copper shielding tape to extend the effective length of the dipole. Do both arms equally.

It should be possible to tune a dipole as described, whilst in place in the measurement position as long as the user has access to a VNA for determining the return loss.

6. References

[1] Draft recommended practice for determining the peak spatial-average specific absorption rate (SAR) in the human body due to wireless communications devices: Experimental Techniques.