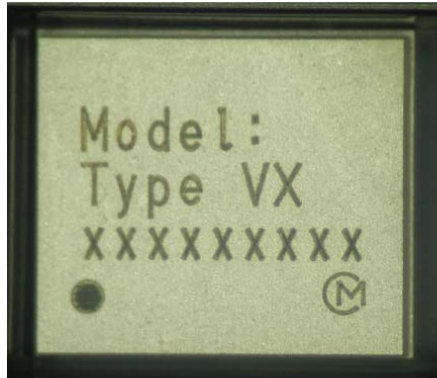
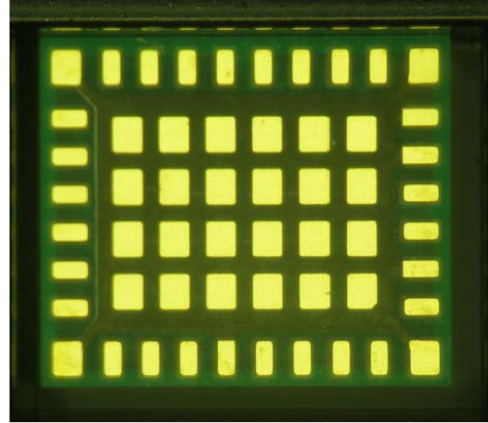


APPENDIX 4: Photographs of test setup

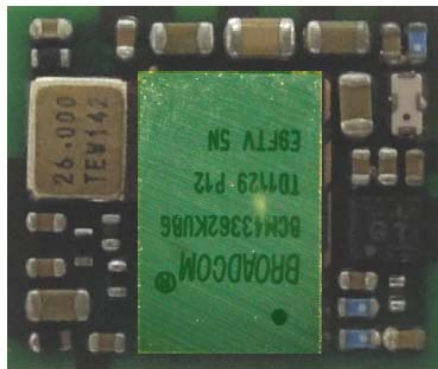
1. Photographs of EUT



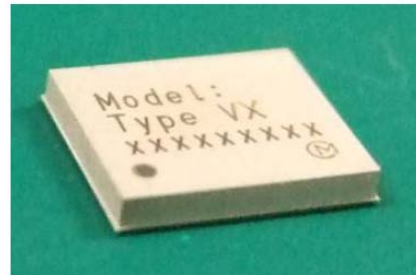
Module(Top --- Shielded)



Module(Back)



Module(Top --- Unshielded)



Module(Top --- Shielded, Bird's-eyes view)



Antenna pattern Side



Back

2. Photographs of host device



Top side



Top side with option battery



Right side



Right side with option battery



Front



Left side



Rear



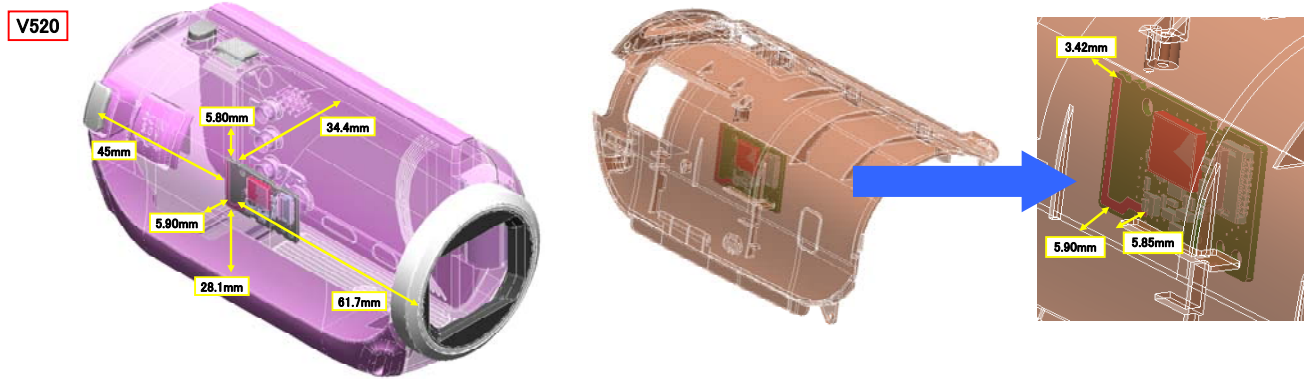
Bottom side



Normal battery(VW-VBT190)

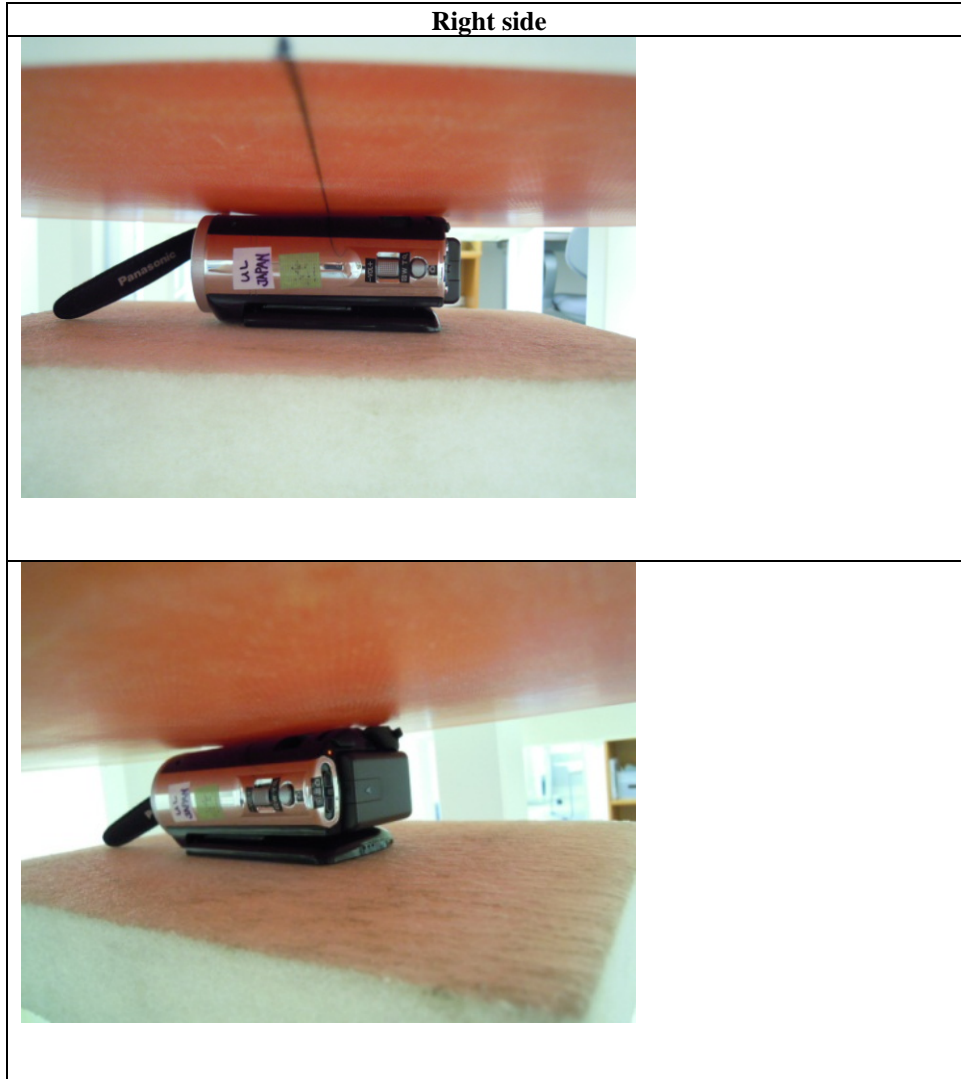
Option battery(VW-VQT380)

3. Antenna position



The shortest distance between surface of host device and antenna: 3.42mm

4. Photographs of setup



Right side tilt



Right side tilt with option battery



End of Report