



Test report No. : 10006554H-R1  
Page : 1 of 65  
FCC ID : VPYLBVX532  
Issued date : April 5, 2013  
Revised date : April 10, 2013


## SAR TEST REPORT


**Test Report No. : 10006554H-R1**

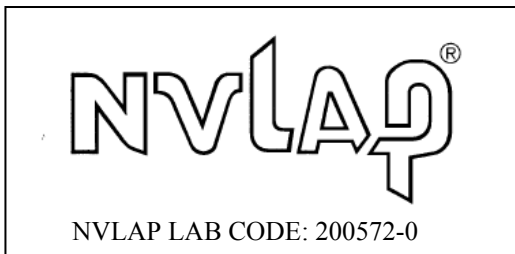
**Applicant** : Murata Manufacturing Co., Ltd.  
**Type of Equipment** : Communication Module  
**Model No.** : Type VX  
**FCC ID** : VPYLBVX532  
**Test regulation** : FCC47CFR 2.1093  
FCC OET Bulletin 65, Supplement C (Edition 01-01)  
**Test Result** : Complied  
**Reported SAR(1g) Value** : Body : 0.148W/kg

1. This test report shall not be reproduced in full or partial, without the written approval of UL Japan, Inc.
2. The results in this report apply only to the sample tested.
3. This sample tested is in compliance with the limits of the above regulation.
4. The test results in this report are traceable to the national or international standards.
5. This test report must not be used by the customer to claim product certification, approval, or endorsement by NVLAP, NIST, or any agency of the Federal Government.
6. This report is a revised version of 10006554H. 10006554H is replaced with this report.

**Date of test:** March 12 and 20, 2013

**Representative test engineer:**   
Hisayoshi Sato  
Engineer of WiSE Japan,  
UL Verification Service

**Approved by :**   
Takahiro Hatakeda  
Leader of WiSE Japan, UL  
Verification Service



This laboratory is accredited by the NVLAP LAB CODE 200572-0, U.S.A. The tests reported herein have been performed in accordance with its terms of accreditation. \*As for the range of Accreditation in NVLAP, you may refer to the WEB address, <http://www.ul.com/japan/jpn/pages/services/emc/about/mark1/index.jsp#nvlap>



---

<b>CONTENTS</b>	<b>PAGE</b>
<b>SECTION 1: Customer information</b> .....	<b>4</b>
<b>SECTION 2: Equipment under test (E.U.T.)</b> .....	<b>4</b>
2.1 Identification of E.U.T. ....	4
2.2 Product Description.....	5
<b>SECTION 3: Test standard information</b> .....	<b>6</b>
3.1 Test Specification.....	6
3.2 Procedure.....	6
3.3 Exposure limit.....	7
3.4 Test Location.....	7
<b>SECTION 4: Test result</b> .....	<b>8</b>
4.1 Stand-alone SAR result.....	8
<b>SECTION 5: Description of the operating mode</b> .....	<b>9</b>
5.1 Output power operating modes.....	9
5.2 Output power measurement results.....	10
5.3 Confirmation before SAR testing.....	12
5.4 SAR testing operating modes.....	13
5.5 Confirmation after SAR testing.....	15
<b>SECTION 6 SAR test exclusion considerations</b> .....	<b>16</b>
6.1 Standalone SAR test exclusion considerations.....	16
<b>SECTION 7: Description of the Body setup</b> .....	<b>17</b>
7.1 Description of the Body setup.....	17
<b>SECTION 8: Test surrounding</b> .....	<b>18</b>
8.1 Measurement uncertainty.....	18
<b>SECTION 9: Measurement results</b> .....	<b>19</b>
9.1 WLAN 2.4G Body SAR.....	19
<b>SECTION 10 Test instruments</b> .....	<b>20</b>
<b>APPENDIX 1: SAR Measurement data</b> .....	<b>21</b>
1. Evaluation procedure.....	21
2. Measurement data.....	22
<b>APPENDIX 2: System Validation</b> .....	<b>26</b>
1. System validation result.....	26
2. System Validation Dipole (D2450V2,S/N:713).....	29
3. Validation uncertainty.....	41
<b>APPENDIX 3: System specifications</b> .....	<b>42</b>
1. Configuration and peripherals.....	42
2. Specifications.....	43
3. Dosimetric E-Field Probe Calibration (EX3DV4, S/N: 3825).....	48
<b>APPENDIX 4: Photographs of test setup</b> .....	<b>59</b>
1. Photographs of EUT.....	59
2. Photographs of host device.....	60
3. Antenna position.....	62
4. Photographs of setup.....	63

## **SECTION 1: Customer information**

Company Name : Murata Manufacturing Co., Ltd.  
Address : 10-1, Higashikotari 1-chome, Nagaokakyo-shi, Kyoto 617-8555 Japan  
Telephone Number : +81-75-955-6735  
Facsimile Number : +81-75-955-6634  
Contact Person : TAKAHARU KAWAKATSU

## **SECTION 2: Equipment under test (E.U.T.)**

### **2.1 Identification of E.U.T.**

#### **<Information of the EUT>**

Type of Equipment : Communication Module  
Model No. : Type VX  
Serial No. : 6  
Rating : DC 2.85V / DC 3.4V  
Country of Mass-production : China  
Condition of EUT : Production model  
Modification of EUT : No Modification by the test lab

#### **<Information of the Host device>**

Type of Equipment : High Definition Video Camera  
Model No. : HC-V520  
Serial No. : 64  
Rating : Li-ion Battery (VW-VBT190)  
DC3.6V/ 1940 mAh  
Option Battery : Li-ion Battery (VW-VQT380)  
DC3.6V/ 3880 mAh  
Body-worn accessory : N/A  
Device category : Portable  
Antenna to antenna separation distance : N/A  
This host device is installed only WLAN antenna of EUT.  
Other antennas are not installed.  
Simultaneous transmission : N/A  
This host device is installed only WLAN antenna of EUT.  
Other antennas are not installed.  
Receipt Date of Sample : March 12, 2013  
Country of Mass-production : Malaysia  
Condition of EUT : Production model  
Modification of EUT : No Modification by the test lab

---

**UL Japan, Inc.**

**Head Office EMC Lab.**

4383-326 Asama-cho, Ise-shi, Mie-ken 516-0021 JAPAN

Telephone: +81 596 24 8999

Facsimile: +81 596 24 8124

## 2.2 Product Description

### General Specification

#### <Information of the EUT>

The EUT is Communication Module which is installed in Movie Camera.

#### <Information of the Host device>

Clock frequency(ies) in the system : DSP\_CLOCK: 48 MHz

### Radio Specification

#### <Information of the EUT>

##### Specification of WLAN (IEEE802.11b/g/n)

Type of radio	Wireless LAN (IEEE802.11b/g)	Wireless LAN (IEEE802.11n) 2.4G Band SISO (20M Band)
Equipment Type	Transceiver	
Frequency of Operation	2412MHz - 2462MHz	
Bandwidth & Channel spacing	Bandwidth : 20MHz Ch spacing : 5MHz	
Type of Modulation	11b: DSSS 11g: OFDM	OFDM
Antenna Type	High Power: Pattern Antenna Low Power: FPC Antenna	
Antenna Gain	High Power: -3.7dBi Low Power: -4.5 dBi	
Power Supply (inner)	DC 2.85V / DC 3.4V	
Operating temperature range	-20 to +55 deg. C.	

#### <Information of the Host device>

##### WLAN (IEEE802.11b/g/n-20)

Radio Type : Transceiver  
Frequency of Operation : 2412-2462MHz  
Modulation : DSSS, OFDM  
Bandwidth & Channel spacing : 20MHz & 5MHz  
Power Supply (radio part input) : DC 2.8V / DC 3.2V  
Antenna type : Pattern Antenna  
Antenna Gain : -3.7dBi

Model No. HC-V520 has the following similar model.

Model name	Difference function						Common function				Accessories					
	NTSC /PAL	Built-in memory	Wi-Fi Function	NFC Function	Mic terminal	H.P. terminal	USB terminal	AV out terminal	HDMI terminal	SD card holder	Enclosed battery	AC Adapter	AC Cable	USB Cable	AV Cable	HDMI Cable
HC-X920	NTSC	—	○	—	○	○	○	○	○	○	VW-VBN130	VSK0732	○	○	○	○
HC-V520	NTSC	—	○	○	—	—	○	○	○	○	VW-VQT190	VSK0780	○	○	—	○

They are identical in electronic characteristics.

When a user actually uses this equipment, HC-V520 has a separation distance smaller than HC-X920 from a human body. Therefore, HC-V520 was used in this test report.

UL Japan, Inc.

Head Office EMC Lab.

4383-326 Asama-cho, Ise-shi, Mie-ken 516-0021 JAPAN

Telephone: +81 596 24 8999

Facsimile: +81 596 24 8124

## **SECTION 3 : Test standard information**

### **3.1 Test Specification**

Title : **Supplement C (Edition 01-01) to OET Bulletin 65 (Edition 97-01):**  
Supplement C (Edition 01-01) - Additional Information for Evaluating Compliance of Mobile and Portable Devices with FCC Limits for Human Exposure to Radiofrequency Emissions  
OET Bulletin 65 (Edition 97-01) - Evaluating Compliance with FCC Guidelines for Human Exposure to Radiofrequency Electromagnetic Fields

: **IEEE Std 1528-2003:**  
IEEE Recommended Practice for Determining the Peak Spatial-Average Specific Absorption Rate (SAR) in the Human Head from Wireless Communications Devices: Measurement Techniques Supplement C

In additions;

- KDB450824D01(v01r01)** SAR Prob Cal and Ver Meas
- KDB450824D02(v01r01)** Dipole SAR Validation Verification
- KDB447498D01(v05)** Mobile and Portable Device RF Exposure Procedures and Equipment Authorization Policies
- KDB447498D02(v02)** SAR Measurement Procedures for USB Dongle Transmitters
- KDB648474D04(v01)** SAR Evaluation Considerations for Wireless Handsets
- KDB941225D01(v02)** SAR Measurement Procedures for 3G Devices
- KDB941225D02(v02v01)** 3GPP R6 HSPA and R7 HSPA+ SAR Guidance
- KDB941225D03(v01)** Recommended SAR Test Reduction Procedures for GSM/GPRS/EDGE
- KDB941225D04(v01)** Evaluating SAR for GSM/(E)GPRS Dual Transfer Mode
- KDB941225D05(v02)** SAR for LTE Devices
- KDB941225D06(v01)** SAR test procedures for devices incorporating SAR Evaluation Procedures for Portable Devices with Wireless Router Capabilities (Hot Spot SAR)
- KDB941225D07(v01)** SAR Evaluation Procedures for UMPC Mini-Tablet Devices
- KDB 616217D04(v01)** SAR Evaluation Considerations for Laptop, Notebook, Netbook and Tablet Computers
- KDB865664D01(v01)** SAR Measurement Requirements for 100MHz to 6 GHz
- KDB248227D01(v01r02)** SAR Measurement Procedures for 802.11a//b/g Transmitters

#### **Reference**

- [1]ANSI, ANSI/IEEE C95.1-1992: IEEE Standard for Safety Levels with Respect to Human Exposure to Radio Frequency Electromagnetic Fields, 3 kHz to 300 GHz, The Institute of Electrical and Electronics Engineers, Inc., New York, NY 10017, 1992.
- [2]SPEAG uncertainty document (AN 15-7/AN19-17) for DASY 5 System from SPEAG (Shimid & Partner Engineering AG).

### **3.2 Procedure**

<b>Transmitter</b>	<b>WLAN</b>
<b>Test Procedure</b>	FCC OET BULLETIN 65, SUPPLEMENT C
	SAR
<b>Category</b>	FCC47CFR 2.1093
Note: UL Japan, Inc.'s SAR Work Procedures 13-EM-W0429 and 13-EM-W0430	

**UL Japan, Inc.**

**Head Office EMC Lab.**

4383-326 Asama-cho, Ise-shi, Mie-ken 516-0021 JAPAN

Telephone: +81 596 24 8999

Facsimile: +81 596 24 8124

### **3.3 Exposure limit**

(A) Limits for Occupational/Controlled Exposure (W/kg)

Spatial Average (averaged over the whole body)	Spatial Peak (averaged over any 1g of tissue)	Spatial Peak (hands/wrists/feet/ankles averaged over 10g)
0.4	8.0	20.0

(B) Limits for General population/Uncontrolled Exposure (W/kg)

Spatial Average (averaged over the whole body)	Spatial Peak (averaged over any 1g of tissue)	Spatial Peak (hands/wrists/feet/ankles averaged over 10g)
0.08	1.6	4.0

**Occupational/Controlled Environments:** are defined as locations where there is exposure that may be incurred by people who are aware of the potential for exposure, (i.e. as a result of employment or occupation).

**General Population/Uncontrolled Environments:** are defined as locations where there is the exposure of individuals who have no knowledge or control of their exposure.

**NOTE:GENERAL POPULATION/UNCONTROLLED EXPOSURE  
SPATIAL PEAK(averaged over any 1g of tissue) LIMIT  
1.6 W/kg**

### **3.4 Test Location**

\*Shielded room for SAR testings  
UL Japan, Inc. Head Office EMC Lab. \*NVLAP Lab. code: 200572-0  
4383-326 Asama-cho, Ise-shi, Mie-ken 516-0021 JAPAN  
Telephone : +81 596 24 8999 Facsimile : +81 596 24 8124

## **SECTION 4 : Test result**

### **4.1 Stand-alone SAR result**

#### **Stand-alone SAR Procedure**

No.	Capable Tx configurations	Head SAR	Body-worn or Body	Product specific (Hotspot etc.)	Note
1	WLAN 11b/g/n(2.4G)	No	Yes	No	-

#### **Measured SAR**

Mode	1g Head SAR [W/kg]	1g Body SAR [W/kg]	1g Product specific SAR [W/kg]
WLAN 11b/g/n(2.4G)	-	0.141	-

#### **Reported SAR**

Measured SAR is scaled to the maximum tune-up tolerance limit by the following formulas.

**Reported SAR= maximum tune-up tolerance limit [mW] / Measured maximum power [mW] · Measured SAR [W/kg]**

**Maximum tune-up tolerance limit\*1: 10.02 dBm(10.05 mW)**

**Minimum tune-up tolerance limit: 8.02 dBm(6.34 mW)**

**Measured Max power: 9.80 dBm(9.55 mW)**

The sample used by the SAR test is within the tune-up tolerance but not more than 2 dB lower than the maximum tune-up tolerance limit.

Mode	1g Head SAR [W/kg]	1g Body SAR [W/kg]	1g Product specific SAR [W/kg]
WLAN 11b/g/n(2.4G)	-	0.148	-

\*1 Maximum tune-up tolerance limit is equivalent to EMC power.

That is, EMC power is the maximum power including the tune-up tolerance range.

Refer to EMC test report No. 33AE0059-HO-01-A-R1 for EMC power.

**UL Japan, Inc.**

**Head Office EMC Lab.**

4383-326 Asama-cho, Ise-shi, Mie-ken 516-0021 JAPAN

Telephone: +81 596 24 8999

Facsimile: +81 596 24 8124



## **SECTION 5 : Description of the operating mode**

### **5.1 Output power operating modes**

Mode	Duty cycle	Frequency Band	Test Frequency	Modulation
IEEE802.11b	>98%	2412-2462MHz	2412MHz (1ch) 2437MHz(6ch) 2462MHz(11ch)	DSSS (DBPSK.DQPSK.CCK)
IEEE802.11g	>98%	2412-2462MHz	2412MHz (1ch) 2437MHz(6ch) 2462MHz(11ch)	OFDM (BPSK.QPSK.16QAM,64QAM)
IEEE802.11n20 (2.4G)	>98%	2412-2462MHz	2412MHz (1ch) 2437MHz(6ch) 2462MHz(11ch)	

#### **Setting**

Power of the EUT was set by the software as follows:

S/W version: 5.90.153

[Power Setting]

11b: 9dBm

11g: 9dBm

11n-20: 9dBm

\*The above setting of the software is the worst case. Any conditions under the normal use do not exceed the condition of setting. In addition, end users cannot change the settings of the output power of the product.

**UL Japan, Inc.**

**Head Office EMC Lab.**

4383-326 Asama-cho, Ise-shi, Mie-ken 516-0021 JAPAN

Telephone: +81 596 24 8999

Facsimile: +81 596 24 8124

## 5.2 Output power measurement results

### Output power measurement for WLAN

#### 1) WLAN (11b/g/n(2.4G))

##### IEEE802.11b 1Mbps

Ch	Frequency [MHz]	P/M	Cable Loss [dB]	Atten. [dB]	Result	
		Reading [dBm] AVG			[dBm] AVG	[mW] AVG
1	2412	-0.92	0.70	10.03	9.81	9.57
6	2437	-1.30	0.70	10.03	9.43	8.77
11	2462	-1.22	0.70	10.03	9.51	8.93

: SAR test channel

: Maximum power mode

Sample Calculation:

Result = Reading + Cable Loss + Attenuator

##### [IEEE802.11b] Rate Check

Rate	Freq.	Reading
[Mbps]	[MHz]	[dBm] AVG
1.0	2437	-10.11
2.0	2437	-10.13
5.5	2437	-10.12
11.0	2437	-10.15

: Worst data rate

**UL Japan, Inc.**

**Head Office EMC Lab.**

4383-326 Asama-cho, Ise-shi, Mie-ken 516-0021 JAPAN

Telephone: +81 596 24 8999

Facsimile: +81 596 24 8124

**IEEE802.11g 6Mbps**

Ch	Frequency [MHz]	P/M Reading [dBm]	Cable Loss [dB]	Atten. [dB]	Result	
		AVG			[dBm] AVG	[mW] AVG
1	2412	-1.03	0.70	10.03	9.70	9.33
6	2437	-1.30	0.70	10.03	9.43	8.77
11	2462	-1.41	0.70	10.03	9.32	8.55

Sample Calculation:

Result = Reading + Cable Loss + Attenuator

**[IEEE802.11g] Rate Check**

Rate [Mbps]	Frequency [MHz]	Reading [dBm] AVG
6.0	2437	-10.01
9.0	2437	-10.03
12.0	2437	-10.03
18.0	2437	-10.04
24.0	2437	-10.06
36.0	2437	-10.09
48.0	2437	-10.10
54.0	2437	-10.12

:Worst data rate

**IEEE802.11n-20 MCS0**

Ch	Frequency [MHz]	P/M Reading [dBm]	Cable Loss [dB]	Atten. [dB]	Result	
		AVG			[dBm] AVG	[mW] AVG
1	2412	-1.10	0.70	10.03	9.63	9.18
6	2437	-1.42	0.70	10.03	9.31	8.53
11	2462	-1.60	0.70	10.03	9.13	8.18

Sample Calculation:

Result = Reading + Cable Loss + Attenuator

**[IEEE802.11n-20] Rate Check**

Rate	Frequency [MHz]	Reading [dBm] AVG
MCS0	2437	-10.23
MCS1	2437	-10.26
MCS2	2437	-10.27
MCS3	2437	-10.30
MCS4	2437	-10.32
MCS5	2437	-10.33
MCS6	2437	-10.35
MCS7	2437	-10.36

:Worst data rate

**UL Japan, Inc.**

**Head Office EMC Lab.**

4383-326 Asama-cho, Ise-shi, Mie-ken 516-0021 JAPAN

Telephone: +81 596 24 8999

Facsimile: +81 596 24 8124

### 5.3 Confirmation before SAR testing

#### Correlation of Output Power between EMC and SAR tests

It was checked that the antenna port power was correlated.

Average Power used for SAR testing can be regarded to be correlated with the one in RF testing as the difference between the two powers is within -5% to +5 %.

#### IEEE802.11b

Mode	Ch	Rate [Mbps]	Frequency [MHz]	P/M Reading [dBm]	Cable Loss [dB]	Atten. [dB]	Result		Deviation	
				AVG			[dBm] AVG	[mW] AVG	[dBm]	[%(mW)]
EMC Power*1	1	5.5	2412	-1.29	1.23	10.08	10.02	10.05	-	-
SAR Power	1	5.5	2412	-0.93	0.70	10.03	9.80	9.55	0.22	-4.94
SAR Power	1	1	2412	-0.92	0.70	10.03	9.81	9.57	0.21	-4.72

Sample Calcula Sample Calculation:

Result = Reading + Cable Loss + Attenuator

\*1 Maximum tune-up tolerance limit is equivalent to EMC power.

That is, EMC power is the maximum power including the tune-up tolerance range.

Refer to EMC test report No. 33AE0059-HO-01-A-R1 for EMC power.

#### 5.4 SAR testing operating modes

The operating mode for SAR testing was decided by the output power

##### 1) SAR measurement for WLAN

##### Decision of SAR test channel

The operating mode for SAR testing was decided by the output power

The average output power for 802.11a was measured on all channels in each frequency band.

Mode	GHz	Channel	"Default Test Channel"		UNII		
			FCC 15.247				
			802.11b	802.11g			
802.11 b/g/n20	2.412	1	√	Δ			
	2.437	6	√	Δ			
	2.462	11	√	Δ			
802.11a/n20	UNII	5.18	36			√	
		5.20	40				*
		5.22	44				*
		5.24	48			√	
		5.26	52			√	
		5.28	56				*
		5.30	60				*
		5.32	64			√	
		5.50	100				*
		5.52	104			√	
		5.54	108				*
		5.56	112				*
		5.58	116			√	
		5.60	120				*
		5.62	124			√	
		5.64	128				*
		5.66	132				*
	5.68	136			√		
	5.70	140				*	
	UNII or FCC 15.247	5.745	149	√		√	
		5.765	153		*		*
5.785		157	√			*	
5.805		161		*	√		
FCC 15.247	5.825	165	√				
802.11n40	UNII	5.19	38			√	
		5.23	46			√	
		5.27	54			√	
		5.31	62			√	
		5.51	102			√	
		5.55	110			√	
		5.59	118				*
		5.63	126			√	
	5.67	134			√		
	UNII or FCC 15.247	5.755	151	√		√	
		FCC 15.247	5.795	159	√		√

√ = "default test channels"

\* = Possible 802.11a channels with maximum average output > the "default test channels"

Δ = Possible 802.11g channels with maximum average output ¼ dB ≥ the "default test channels"

UL Japan, Inc.

Head Office EMC Lab.

4383-326 Asama-cho, Ise-shi, Mie-ken 516-0021 JAPAN

Telephone: +81 596 24 8999

Facsimile: +81 596 24 8124

Position	Mode	Test Frequency	Modulation	Crest factor	Note
Body	IEEE802.11b	2412MHz(1ch) *1	DBPSK(1Mbps) *2	1	*3 1)
<b>Setting</b>					
Power of the EUT was set by the software as follows:  H/W version: 2nd try S/W version: Ver.14  [Power Setting] Maximum power setting  *The above setting of the software is the worst case. Any conditions under the normal use do not exceed the condition of setting. In addition, end users cannot change the settings of the output power of the product.					

\*1 The other channel was not required since maximum average output power channel SAR value is less than 0.8W/kg.

\*2 The 11b mode was maximum average power. The 11g/n SAR is not required for other mode because the maximum average output power for other mode is less than 1/4dB higher than that measured 11b mode.

\*3

- 1) Repeated measurement is not required when the original highest measured SAR is < 0.80 W/kg.
- 2) When the original highest measured SAR is  $\geq 0.80$  W/kg, repeat that measurement once.

**UL Japan, Inc.**

**Head Office EMC Lab.**

4383-326 Asama-cho, Ise-shi, Mie-ken 516-0021 JAPAN

Telephone: +81 596 24 8999

Facsimile: +81 596 24 8124

## **5.5 Confirmation after SAR testing**

It was checked that the power drift [W] is within +/-5%. The verification of power drift during the SAR test is that DASY5 system calculates the power drift by measuring the e-field at the same location at beginning and the end of the scan measurement for each test position.

DASY5 system calculation Power drift value[dB] =  $20\log(E_a)/(E_b)$

Before SAR testing :  $E_b$ [V/m]

After SAR testing :  $E_a$ [V/m]

Limit of power drift[W] = +/-5%

$X[\text{dB}] = 10\log[P] = 10\log(1.05/1) = 10\log(1.05) - 10\log(1) = 0.212\text{dB}$

from E-field relations with power.

$p = E^2/\eta = E^2/$

Therefore, The correlation of power and the E-field

$X_{\text{dB}} = 10\log(P) = 10\log(E)^2 = 20\log(E)$

Therefore,

The calculated power drift of DASY5 System must be the less than +/-0.212dB.

## SECTION 6 SAR test exclusion considerations

### 6.1 Standalone SAR test exclusion considerations

1) The 1-g and 10-g SAR test exclusion thresholds for 100 MHz to 6 GHz at test separation distances  $\leq 50$  mm are determined by:

$$[(\text{max. power of channel, including tune-up tolerance, mW})/(\text{min. test separation distance, mm})] \cdot [\sqrt{f(\text{GHz})}] \leq 3.0$$

for 1-g SAR and  $\leq 7.5$  for 10-g extremity SAR, where

$f(\text{GHz})$  is the RF channel transmit frequency in GHz

Power and distance are rounded to the nearest mW and mm before calculation<sup>17</sup>

The result is rounded to one decimal place for comparison

The test exclusions are applicable only when the minimum test separation distance is  $\leq 50$  mm and for transmission frequencies between 100 MHz and 6 GHz. When the minimum test separation distance is  $< 5$  mm, a distance of 5 mm is applied to determine SAR test exclusion.

Band	Standalone SAR tested	Positiom	Mode	Upper frequency of band *1	Maximum tune-up tolerance limit *5	Min distance *2	Calculation of exclusion *3
WLAN(2.4 GHz band)	<input type="checkbox"/>	Top side	11b DBPSK(1Mbps)	2462 [MHz] (11ch)	10.02 [dBm] 10.05 [mW]	5.8 [mm]	2.7
WLAN(2.4 GHz band)	<input type="checkbox"/>	Bottom	11b DBPSK(1Mbps)	2462 [MHz] (11ch)	10.02 [dBm] 10.05 [mW]	28.1 [mm]	0.6
WLAN(2.4 GHz band)	<input type="checkbox"/>	Right side	11b DBPSK(1Mbps)	2462 [MHz] (11ch)	10.02 [dBm] 10.05 [mW]	5.9 [mm]	2.7
WLAN(2.4 GHz band)	<input type="checkbox"/>	Left side	11b DBPSK(1Mbps)	2462 [MHz] (11ch)	10.02 [dBm] 10.05 [mW]	34.4 [mm]	0.5
WLAN(2.4 GHz band)	<input type="checkbox"/>	Rear	11b DBPSK(1Mbps)	2462 [MHz] (11ch)	10.02 [dBm] 10.05 [mW]	45.0 [mm]	0.4
WLAN(2.4 GHz band)	<input checked="" type="checkbox"/>	Right side tilt	11b DBPSK(1Mbps)	2462 [MHz] (11ch)	10.02 [dBm] 10.05 [mW]	5.0 [mm]	3.2

2) At 100 MHz to 6 GHz and for *test separation distances*  $> 50$  mm, the SAR test exclusion threshold is determined according to the following.

a) [Threshold at 50 mm in step 1) + (test separation distance - 50 mm) · (f(MHz)/150)] mW, at 100 MHz to 1500 MHz

b) [Threshold at 50 mm in step 1) + (test separation distance - 50 mm) · 10] mW at  $> 1500$  MHz and  $\leq 6$  GHz

Band	Standalone SAR tested	Positiom	Mode	Upper frequency of band *1	Maximum tune-up tolerance limit *5	Min distance *2	Calculation of threshold*4
WLAN(2.4 GHz band)	<input type="checkbox"/>	Front	11b DBPSK(1Mbps)	2462 [MHz] (11ch)	10.02 [dBm] 10.05 [mW]	61.7 [mm]	212.6 [mW]

\*1 The upper frequency of the frequency band was used in order to calculate standalone SAR test exclusion considerations.

\*2 When the minimum test separation distance is  $< 5$  mm, a distance of 5 mm is applied to determine SAR test exclusion. Refer to Appendix 4.

\*3  $[(\text{max. power of channel, including tune-up tolerance, mW})/(\text{min. test separation distance, mm})] \cdot [\sqrt{f(\text{GHz})}] \leq 3.0$

If it is Calculation of exclusion  $\leq 3.0$  standalone SAR test is excluded.

\*4  $[(3 \cdot 50)/(\sqrt{f(\text{GHz})}) + (\text{test separation distance} - 50 \text{ mm}) \cdot 10]$  mW at  $> 1500$  MHz and  $\leq 6$  GHz

If it is maximum tune-up tolerance limit  $<$  Threshold, standalone SAR test is excluded.

\*5 Maximum tune-up tolerance limit is maximum power of EMC report(Test report No. 33AE0059-HO-01-A-R1).

UL Japan, Inc.

Head Office EMC Lab.

4383-326 Asama-cho, Ise-shi, Mie-ken 516-0021 JAPAN

Telephone: +81 596 24 8999

Facsimile: +81 596 24 8124



## **SECTION 7 : Description of the Body setup**

### **7.1 Description of the Body setup**

#### **i) Procedure for SAR testing**

-The tested procedure was performed according to the KDB 447498 D01 (Mobile and Portable Device RF Exposure Procedures and Equipment Authorization Policies)

#### **ii) Test mode**

<b>WLAN</b>	<b>Data transmission mode (11b)</b>
-------------	-------------------------------------

#### **iii) Test position**

No.	Position*1	Test distance	WLAN		
			Tested	Antenna	Separation from user
1	Front	-	<input type="checkbox"/>	Fixed	61.7mm
2	Rear	-	<input type="checkbox"/>	Fixed	45.0mm
3	Left side	-	<input type="checkbox"/>	Fixed	34.4mm
4	Right side*2	0mm	<input checked="" type="checkbox"/>	Fixed	5.9mm
5	Top side	-	<input type="checkbox"/>	Fixed	5.8mm
6	Bottom side	-	<input type="checkbox"/>	Fixed	28.1mm
7	Right side tilt	0mm	<input checked="" type="checkbox"/>	Fixed	3.42mm

\*1) Refer to Section 6 and Appendix 4.

\*2) Reference measurement

#### **<Antenna position>**

WLAN antenna is in a single fixed position. The antenna is integral part of the device.

**UL Japan, Inc.**

**Head Office EMC Lab.**

4383-326 Asama-cho, Ise-shi, Mie-ken 516-0021 JAPAN

Telephone: +81 596 24 8999

Facsimile: +81 596 24 8124

## SECTION 8 : Test surrounding

### 8.1 Measurement uncertainty

The uncertainty budget has been determined for the DASY5 measurement system according to the SPEAG documents[2] and is given in the following Table.

<0.3 – 3GHz range>

Error Description	Uncertain value ±	Probability distribution	divisor	(ci) 1g	Standard (1g)	vi or v <sub>eff</sub>
<b>Measurement System</b>						
Probe calibration	± 6.00	Normal	1	1	± 6.00	∞
Axial isotropy of the probe	± 4.7	Rectangular	√3	0.7	± 1.9	∞
Spherical isotropy of the probe	± 9.6	Rectangular	√3	0.7	± 3.9	∞
Boundary effects	± 1.0	Rectangular	√3	1	± 0.6	∞
Probe linearity	± 4.7	Rectangular	√3	1	± 2.7	∞
Detection limit	± 1.0	Rectangular	√3	1	± 0.6	∞
Modulation response	± 2.4	Rectangular	√3	1	± 1.4	∞
Readout electronics	± 0.3	Normal	1	1	± 0.3	∞
Response time	± 0.8	Rectangular	√3	1	± 0.5	∞
Integration time	± 2.6	Rectangular	√3	1	± 1.5	∞
RF ambient Noise	± 3.0	Rectangular	√3	1	± 1.7	∞
RF ambient Reflections	± 3.0	Rectangular	√3	1	± 1.7	∞
Probe Positioner	± 0.4	Rectangular	√3	1	± 0.2	∞
Probe positioning	± 2.9	Rectangular	√3	1	± 1.7	∞
Max.SAR Eval.	± 1.0	Rectangular	√3	1	± 0.6	∞
<b>Test Sample Related</b>						
Device positioning	± 2.9	Normal	1	1	± 2.9	2
Device holder uncertainty	± 3.6	Normal	1	1	± 3.6	1
Power drift	± 5.0	Rectangular	√3	1	± 2.9	∞
Power Scaling	+ 0.0	Rectangular	√3	1	± 0.0	∞
<b>Phantom and Setup</b>						
Phantom uncertainty	± 4.0	Rectangular	√3	1	± 2.3	∞
Liquid conductivity (target)	± 5.0	Rectangular	√3	0.64	± 1.8	∞
Liquid conductivity (meas.)	+ 1.9	Rectangular	1	0.64	+ 1.2	∞
Liquid permittivity (target)	± 5.0	Rectangular	√3	0.6	± 1.7	∞
Liquid permittivity (meas.)	- 4.2	Rectangular	1	0.6	- 2.5	∞
Liquid conductivity - temp.unc (below 2deg.C.)	± 1.7	Rectangular	√3	0.78	± 0.8	∞
Liquid permittivity - temp.unc (below 2deg.C.)	± 0.3	Rectangular	√3	0.23	± 0.0	∞
<b>Combined Standard Uncertainty</b>					± 11.155	
<b>Expanded Uncertainty (k=2)</b>					± 22.3	

UL Japan, Inc.

Head Office EMC Lab.

4383-326 Asama-cho, Ise-shi, Mie-ken 516-0021 JAPAN

Telephone: +81 596 24 8999

Facsimile: +81 596 24 8124

## SECTION 9 : Measurement results

### 9.1 WLAN 2.4G Body SAR

(1)Method of measurement

<Body>

Step1. The searching for the worst position

The test was performed in mode of the maximum average output power

Note:

- 1)The BODY SAR is not required for 11g/n mode because the maximum average output power for 11g/n mode is less than 1/4dB higher than that measured 11b mode.
- 2)The other channel was not required since maximum average output power channel SAR value is less than 0.8W/kg.
- 3) Repeated measurement is not required when the original highest measured SAR is < 0.80 W/kg.

(2)Simulated Tissue Liquid Parameter confirmation

The dielectric parameters were checked prior to assessment using the HP85070D dielectric probe kit.

The dielectric parameters measurement is reported in each correspondent section.

DIELECTRIC PARAMETERS MEASUREMENT RESULTS										
Date	Ambient Temp. [deg.c]	Relative Humidity [%]	Liquid type	Liquid Temp. [deg.c]	Measured Frequency [MHz]	Parameters	Target Value*1	Measured	Deviation [%]	Limit [%]
12-Mar	24.0	42	MSL 2450	23.5	2450	$\epsilon_r$	52.7	50.5	-4.2	+/-5
						$\sigma$ [mho/m]	1.95	1.98	1.7	+/-5
20-Mar	24.0	44	MSL 2450	23.5	2450	$\epsilon_r$	52.7	50.5	-4.1	+/-5
						$\sigma$ [mho/m]	1.95	1.99	1.9	+/-5

$\epsilon_r$ : Relative Permittivity /  $\sigma$  : Conductivity

\*1 The Target value is a parameter defined in FCC OET65.

(3)Result of Body SAR

BODY SAR MEASUREMENT RESULTS												
Frequency		Modulation	Max power(Meas)		Maximum tune-up tolerance limit		Phantom Section	EUT Set-up Conditions			Measured SAR(1g) [W/kg]	Reported SAR(1g) *1 [W/kg]
Channel	[MHz]		[dBm]	[mW]	[dBm]	[mW]		Antenna	Position	Separation [mm]	Maximum of multi-peak	Maximum of multi-peak
<b>Step.1 Position searching</b>												
1	2412	11b 1Mbps	9.80	9.55	10.02	10.05	Flat	Fixed	Right Side*2	0	<b>0.090</b>	<b>0.095</b>
1	2412	11b 1Mbps	9.80	9.55	10.02	10.05	Flat	Fixed	Riht Side Tilt	0	<b>0.141</b>	<b>0.148</b>
1	2412	11b 1Mbps	9.80	9.55	10.02	10.05	Flat	Fixed	Riht Side Tilt (with option battery)	0	<b>0.137</b>	<b>0.144</b>

\*1 Reported SAR= Maximum tune-up tolerance limit [mW] / Measured maximum power [mW] · Measured SAR [W/kg]

\*2 This data is reference measurement.

UL Japan, Inc.

Head Office EMC Lab.

4383-326 Asama-cho, Ise-shi, Mie-ken 516-0021 JAPAN

Telephone: +81 596 24 8999

Facsimile: +81 596 24 8124

## **SECTION 10 Test instruments**

Control No.	Instrument	Manufacturer	Model No	Serial No	Test Item	Calibration Date * Interval(month)
MOS-19	Thermo-Hygrometer	Custom	CTH-201	0001	Power	2012/12/25 * 12
MPM-13	Power Meter	Anritsu	ML2495A	0824014	Power	2012/11/26 * 12
MPSE-18	Power sensor	Anritsu	MA2411B	0738174	Power	2012/11/26 * 12
MAT-25	Attenuator(10dB)(above 1GHz)	Agilent	8493C	71642	Power	2012/06/27 * 12
MPM-11	Dual Power Meter	Agilent	E4419B	MY45102060	SAR	2012/07/17 * 12
MPSE-16	Power sensor	Agilent	E9301A	MY41498313	SAR	2012/07/17 * 12
MPSE-15	Power sensor	Agilent	E9301A	MY41498311	SAR	2012/07/17 * 12
MAT-23	Attenuator(10dB) 1-18GHz	Orient Microwave	BX10-0476-00	-	RE	2012/03/27 * 12
MAT-25	Attenuator(10dB)(above 1GHz)	Agilent	8493C	71642	SAR	2012/06/27 * 12
MSG-10	Signal Generator	Agilent	N5181A	MY47421098	SAR	2012/10/08 * 12
MRFA-12	RF Power Amplifier	MILMEGA	AS0825-65	1015249	SAR(0.8-2.5GHz)	2012/08/28 * 12
MHDC-12	Dual Directional Coupler	Hewlett Packard	772D	2839A0016	SAR(2-18GHz)	Pre Check
MNA-01	Network Analyzer	Agilent/HP	E8358A	US41080381	SAR	2012/09/14 * 12
MDPK-01	Dielectric probe kit	Agilent	85070D	702	SAR	2012/08/14 * 12
MNCK-01	Type N Calibration Kit	Agilent	85032F	MY41495257	SAR	2012/09/18 * 12
MPB-07	Dosimetric E-Field Probe	Schmid&Partner Engineering AG	EX3DV4	3825	SAR	2012/12/10 * 12
MDAE-01	Data Acquisition Electronics	Schmid&Partner Engineering AG	DAE4	509	SAR	2012/07/13 * 12
COTS-MSAR-03	Dasy5	Schmid&Partner Engineering AG	DASY52.6.1.408	-	SAR	-
COTS-MSAR-02	S-Parameter Network Analyzer	Agilent	—	—	SAR	-
MDA-07	Dipole Antenna	Schmid&Partner Engineering AG	D2450V2	713	SAR	2010/09/06 * 36
MPF-02	2mmOval Flat Phantom ERI 4.0	Schmid&Partner Engineering AG	QD VA 001B (ERI4.0)	1045	SAR	2012/05/08 * 12
MOS-26	Thermo-Hygrometer	CUSTOM	CTH-201	A08Q29	SAR	2012/05/14 * 12
MOS-10	Digital thermometer	HANNA	Checktemp-2	MOS-10	SAR	2012/08/06 * 12
MBM-13	Barometer	Sunoh	SBR121	837	SAR	2011/03/14 * 36
HSL/MSL2450					Daily check	Target value ± 5%
SAR room					Daily check	Ambient Noise<0.012W/kg

**The expiration date of the calibration is the end of the expired month.**

**All equipment is calibrated with valid calibrations. Each measurement data is traceable to the national or international standards.**

**As for some calibrations performed after the tested dates, those test equipment have been controlled by means of an unbroken chains of calibrations.**

**UL Japan, Inc.**

**Head Office EMC Lab.**

4383-326 Asama-cho, Ise-shi, Mie-ken 516-0021 JAPAN

Telephone: +81 596 24 8999

Facsimile: +81 596 24 8124

## **APPENDIX 1 : SAR Measurement data**

### **1. Evaluation procedure**

**The evaluation was performed with the following procedure:**

**Step 1:** Measurement of the E-field at a fixed location above the ear point or central position of flat phantom was used as a reference value for assessing the power drop.

**Step 2:** The SAR distribution at the exposed side of head or body position was measured at a distance of each device from the inner surface of the shell. The area covered the entire dimension of the antenna of EUT and the horizontal grid spacing was 15 mm x 15 mm, 12 mm x 12 mm or 10mm x 10mm. Based on these data, the area of the maximum absorption was determined by spline interpolation.

**Step 3:** Around this point found in the Step 2 (area scan), a volume of 30mm x 30mm x 30mm or more was assessed by measuring 7 x 7 x 7 points at least for below 3GHz.

And for any secondary peaks found in the Step2 which are within 2dB of maximum peak and not with this Step3 (Zoom scan) is repeated. On the basis of this data set, the spatial peak SAR value was evaluated under the following procedure:

(1). The data at the surface were extrapolated, since the center of the dipoles is 1mm(EX3DV4) away from the tip of the probe and the distance between the surface and the lowest measuring point is 1.3 mm. The extrapolation was based on a least square algorithm [4]. A polynomial of the fourth order was calculated through the points in z-axes.

This polynomial was then used to evaluate the points between the surface and the probe tip.

(2). The maximum interpolated value was searched with a straightforward algorithm. Around this maximum the SAR values averaged over the spatial volumes (1 g or 10 g) were computed by the 3D-Spline interpolation algorithm. The 3D-Spline is composed of three one-dimensional splines with the "Not a knot"-condition (in x, y and z-directions) [4], [5]. The volume was integrated with the trapezoidal-algorithm. One thousand points (10 x 10 x 10) were interpolated to calculate the average.

(3). All neighboring volumes were evaluated until no neighboring volume with a higher average value was found.

**Step 4:** Re-measurement of the E-field at the same location as in Step 1.

## 2. Measurement data

### i) WLAN 2.4GHz Body

#### TYPE VX Right Side 11b 1Mbps 2412MHz (Reference measurement)

Communication System: WLAN 11a/b/g/n ; Communication System Band: WLAN 11b/g/n; Frequency: 2412 MHz; Duty Cycle: 1:1

Medium parameters used (interpolated):  $f = 2412$  MHz;  $\sigma = 1.933$  mho/m;  $\epsilon_r = 50.623$ ;  $\rho = 1000$  kg/m<sup>3</sup>

Phantom section: Flat Section

Measurement Standard: DASYS5 (IEEE/IEC/ANSI C63.19-2007)

DASY5 Configuration

Probe: EX3DV4 - SN3825; ConvF(7.33, 7.33, 7.33); Calibrated: 2012/12/10;

Sensor-Surface: 2mm (Mechanical Surface Detection (Locations From Previous Scan Used)), Sensor-Surface: 2mm (Mechanical Surface Detection)

Electronics: DAE4 Sn509; Calibrated: 2012/07/13

Phantom: ELI 4.0; Type: QDOVA001BA;

Measurement SW: DASYS2, Version 52.8 (3);

**Area Scan 2 2 (81x131x1):** Interpolated grid: dx=1.200 mm, dy=1.200 mm

[Info: Interpolated medium parameters used for SAR evaluation.](#)

Maximum value of SAR (interpolated) = 0.146 W/kg

**Zoom Scan (7x7x7)/Cube 0:** Measurement grid: dx=5mm, dy=5mm, dz=5mm

Reference Value = 4.963 V/m; Power Drift = -0.06 dB

Peak SAR (extrapolated) = 0.203 W/kg

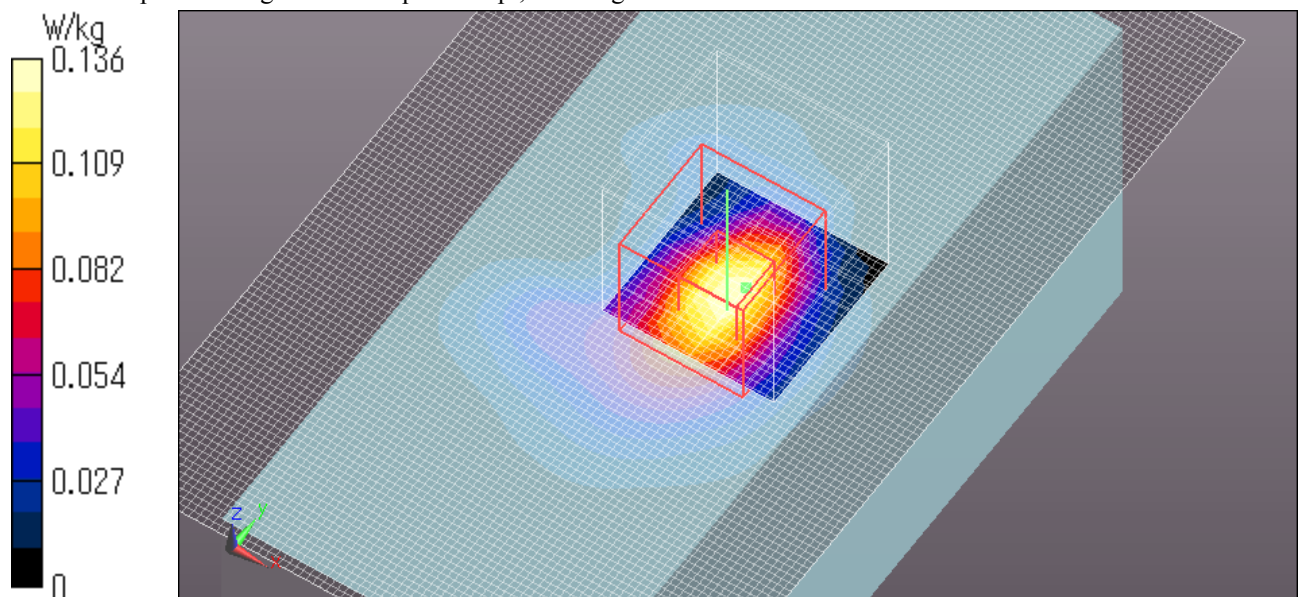
**SAR(1 g) = 0.090 W/kg; SAR(10 g) = 0.038 W/kg**

[Info: Interpolated medium parameters used for SAR evaluation.](#)

Maximum value of SAR (measured) = 0.136 W/kg

Date: 2013/03/12

Ambient Temp. : 24.0 degree.C. Liquid Temp.; 23.5 degree.C.



UL Japan, Inc.

Head Office EMC Lab.

4383-326 Asama-cho, Ise-shi, Mie-ken 516-0021 JAPAN

Telephone: +81 596 24 8999

Facsimile: +81 596 24 8124

**TYPE VX Right Side Tilt 11b 1Mbps 2412MHz**

Communication System: WLAN 11a/b/g/n ; Communication System Band: WLAN 11b/g/n; Frequency: 2412 MHz; Duty Cycle: 1:1

Medium parameters used (interpolated):  $f = 2412$  MHz;  $\sigma = 1.933$  mho/m;  $\epsilon_r = 50.623$ ;  $\rho = 1000$  kg/m<sup>3</sup>

Phantom section: Flat Section

Measurement Standard: DASYS (IEEE/IEC/ANSI C63.19-2007)

DASY5 Configuration

Probe: EX3DV4 - SN3825; ConvF(7.33, 7.33, 7.33); Calibrated: 2012/12/10;

Sensor-Surface: 2mm (Mechanical Surface Detection (Locations From Previous Scan Used)), Sensor-Surface: 2mm (Mechanical Surface Detection)

Electronics: DAE4 Sn509; Calibrated: 2012/07/13

Phantom: ELI 4.0; Type: QDOVA001BA;

Measurement SW: DASYS2, Version 52.8 (3);

**Area Scan 2 2 (81x131x1):** Interpolated grid: dx=1.200 mm, dy=1.200 mm

[Info: Interpolated medium parameters used for SAR evaluation.](#)

Maximum value of SAR (interpolated) = 0.236 W/kg

**Zoom Scan (7x7x7)/Cube 0:** Measurement grid: dx=5mm, dy=5mm, dz=5mm

Reference Value = 10.503 V/m; Power Drift = -0.12 dB

Peak SAR (extrapolated) = 0.331 W/kg

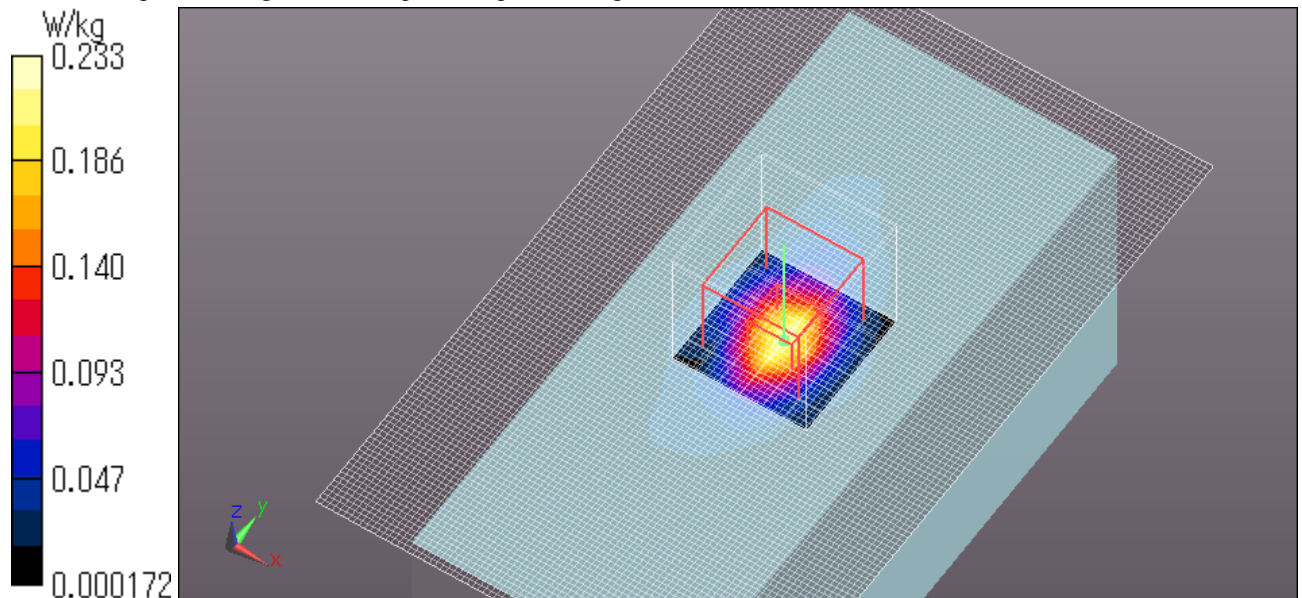
**SAR(1 g) = 0.141 W/kg; SAR(10 g) = 0.055 W/kg**

[Info: Interpolated medium parameters used for SAR evaluation.](#)

Maximum value of SAR (measured) = 0.231 W/kg

Date: 2013/03/12

Ambient Temp. : 24.0 degree.C. Liquid Temp.; 23.5 degree.C.



**UL Japan, Inc.**

**Head Office EMC Lab.**

4383-326 Asama-cho, Ise-shi, Mie-ken 516-0021 JAPAN

Telephone: +81 596 24 8999

Facsimile: +81 596 24 8124

## Z Scan at Maximum Body SAR position in WLAN 2.4GHz band

### TYPE VX Right Side Tilt 11b 1Mbps 2412MHz

Communication System: WLAN 11a/b/g/n ; Communication System Band: WLAN 11b/g/n; Frequency: 2412 MHz; Duty Cycle: 1:1

Medium parameters used (interpolated):  $f = 2412$  MHz;  $\sigma = 1.933$  mho/m;  $\epsilon_r = 50.623$ ;  $\rho = 1000$  kg/m<sup>3</sup>

Phantom section: Flat Section

Measurement Standard: DASYS (IEEE/IEC/ANSI C63.19-2007)

DASY5 Configuration

Probe: EX3DV4 - SN3825; ConvF(7.33, 7.33, 7.33); Calibrated: 2012/12/10;

Sensor-Surface: 2mm (Mechanical Surface Detection (Locations From Previous Scan Used)), Sensor-Surface: 2mm (Mechanical Surface Detection)

Electronics: DAE4 Sn509; Calibrated: 2012/07/13

Phantom: ELI 4.0; Type: QDOVA001BA;

Measurement SW: DASYS2, Version 52.8 (3);

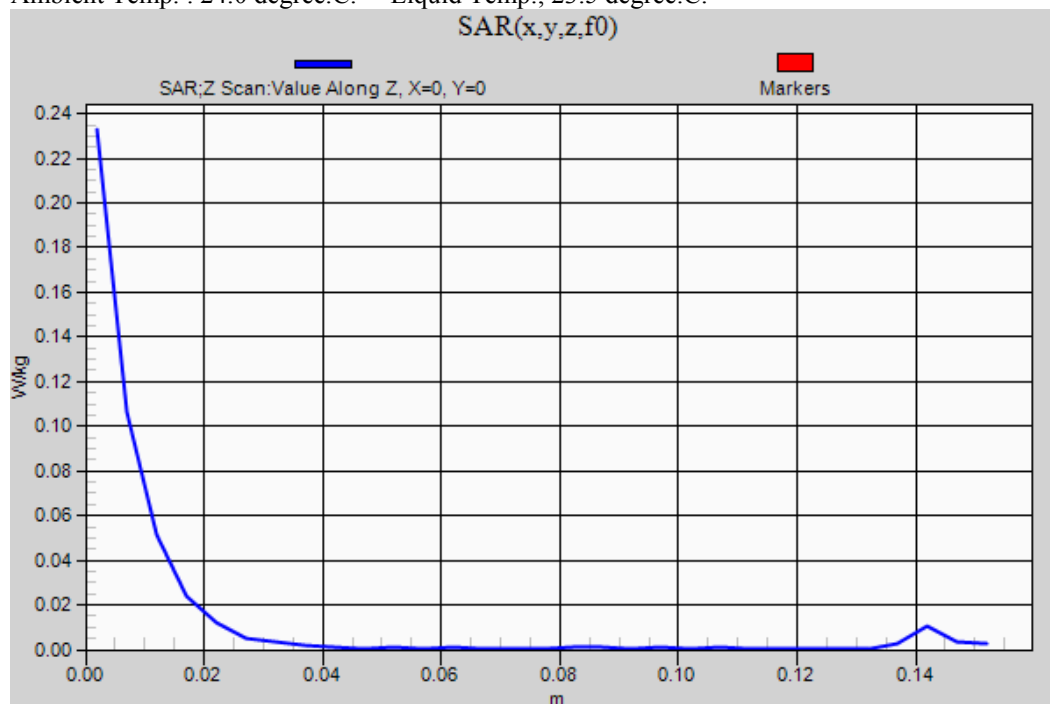
**Z Scan (1x1x31):** Measurement grid: dx=20mm, dy=20mm, dz=5mm

Info: [Interpolated medium parameters used for SAR evaluation.](#)

Maximum value of SAR (measured) = 0.233 W/kg

Date: 2013/03/12

Ambient Temp. : 24.0 degree.C. Liquid Temp.; 23.5 degree.C.



UL Japan, Inc.

Head Office EMC Lab.

4383-326 Asama-cho, Ise-shi, Mie-ken 516-0021 JAPAN

Telephone: +81 596 24 8999

Facsimile: +81 596 24 8124



**TYPE VX Right Side Tilt 11b 1Mbps 2412MHz with option battery**

Communication System: WLAN 11a/b/g/n ; Communication System Band: WLAN 11b/g/n; Frequency: 2412 MHz; Duty Cycle: 1:1

Medium parameters used (interpolated):  $f = 2412$  MHz;  $\sigma = 1.936$  mho/m;  $\epsilon_r = 50.664$ ;  $\rho = 1000$  kg/m<sup>3</sup>

Phantom section: Flat Section

Measurement Standard: DASY5 (IEEE/IEC/ANSI C63.19-2007)

DASY5 Configuration

Probe: EX3DV4 - SN3825; ConvF(7.33, 7.33, 7.33); Calibrated: 2012/12/10; \${Probe: Calibration Date}

Sensor-Surface: 2mm (Mechanical Surface Detection (Locations From Previous Scan Used)), Sensor-Surface: 2mm (Mechanical Surface Detection)

Electronics: DAE4 Sn509; Calibrated: 2012/07/13

Phantom: ELI 4.0; Type: QDOVA001BA; Serial: xxxx

Measurement SW: DASY52, Version 52.8 (3);

**Area Scan 2 2 (81x131x1):** Interpolated grid: dx=1.200 mm, dy=1.200 mm

[Info: Interpolated medium parameters used for SAR evaluation.](#)

Maximum value of SAR (interpolated) = 0.233 W/kg

**Zoom Scan (7x7x7)/Cube 0:** Measurement grid: dx=5mm, dy=5mm, dz=5mm

Reference Value = 10.178 V/m; Power Drift = -0.12 dB

Peak SAR (extrapolated) = 0.319 W/kg

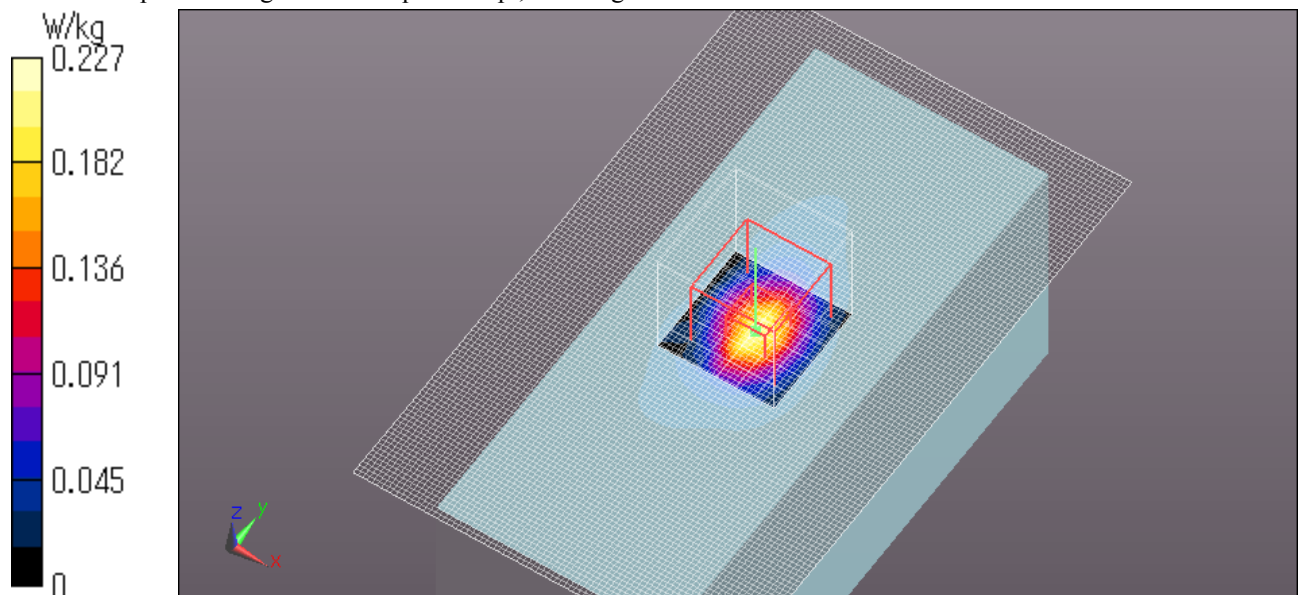
**SAR(1 g) = 0.137 W/kg; SAR(10 g) = 0.055 W/kg**

[Info: Interpolated medium parameters used for SAR evaluation.](#)

Maximum value of SAR (measured) = 0.227 W/kg

Date: 2013/03/20

Ambient Temp. : 24.0 degree.C. Liquid Temp.; 23.5 degree.C.



**UL Japan, Inc.**

**Head Office EMC Lab.**

4383-326 Asama-cho, Ise-shi, Mie-ken 516-0021 JAPAN

Telephone: +81 596 24 8999

Facsimile: +81 596 24 8124

## APPENDIX 2 : System Validation

### 1. System validation result

#### System validation result Body 2450

#### Simulated Tissue Liquid Parameter confirmation

DIELECTRIC PARAMETERS MEASUREMENT RESULTS										
Date	Ambient Temp. [deg.c]	Relative Humidity [%]	Liquid type	Liquid Temp. [deg.c]	Measured Frequency [MHz]	Parameters	Target Value*1	Measured	Deviation [%]	Limit [%]
12-Mar	24.0	42	MSL 2450	23.5	2450	$\epsilon_r$	52.7	50.5	-4.2	+/-5
						$\sigma$ [mho/m]	1.95	1.98	1.7	+/-5
20-Mar	24.0	44	MSL 2450	23.5	2450	$\epsilon_r$	52.7	50.5	-4.1	+/-5
						$\sigma$ [mho/m]	1.95	1.99	1.9	+/-5

$\epsilon_r$ : Relative Permittivity /  $\sigma$  : Conductivity

\*1 The Target value is a parameter defined in FCC OET65.

DIELECTRIC PARAMETERS MEASUREMENT RESULTS										
Date	Ambient Temp. [deg.c]	Relative Humidity [%]	Liquid type	Liquid Temp. [deg.c]	Measured Frequency [MHz]	Parameters	Target Value*2	Measured	Deviation [%]	Limit*3 [%]
12-Mar	24.0	42	MSL 2450	23.5	2450	$\epsilon_r$	52.5	50.5	-3.8	+/-6
						$\sigma$ [mho/m]	1.95	1.98	1.7	+/-6
20-Mar	24.0	44	MSL 2450	23.5	2450	$\epsilon_r$	52.5	50.5	-3.8	+/-6
						$\sigma$ [mho/m]	1.95	1.99	1.9	+/-6

$\epsilon_r$ : Relative Permittivity /  $\sigma$  : Conductivity

\*2 The target value is the calibrated dipole Body TSL parameters. (D2450V2 SN:713, Measured Body TSL parameters)

\*3 The limit is for deviation provided by manufacture.

#### System validation result (for calibration by manufacture)

SYSTEM VALIDATION								
Date	Frequency [MHz]	SAR 1g [W/kg]				Deviation [%]	Limit [%]	
		Forward Power 250mW		Conversion 1W				Target 1W *1
		Measured		Calculation				
12-Mar	2450.00	13.90		55.60		52.00	6.9	+/-10
20-Mar	2450.00	13.70		54.80		52.00	5.4	+/-10

\*1 The target value is the parameter defined in 1g SAR (normalizes to 1W) in manufacturer calibrated dipole (D2450V2 SN:713)

UL Japan, Inc.

Head Office EMC Lab.

4383-326 Asama-cho, Ise-shi, Mie-ken 516-0021 JAPAN

Telephone: +81 596 24 8999

Facsimile: +81 596 24 8124

**Body 2450MHz System Validation DATA / Dipole2.4GHz / Forward Conducted Power : 250mW**

Communication System: CW; Communication System Band: D2450 (2450.0 MHz); Frequency: 2450 MHz; Duty Cycle: 1:1

Medium parameters used:  $f = 2450$  MHz;  $\sigma = 1.984$  mho/m;  $\epsilon_r = 50.486$ ;  $\rho = 1000$  kg/m<sup>3</sup>

Phantom section: Flat Section

Measurement Standard: DASYS (IEEE/IEC/ANSI C63.19-2007)

DASY5 Configuration

Probe: EX3DV4 - SN3825; ConvF(7.33, 7.33, 7.33); Calibrated: 2012/12/10; \${Probe: Calibration Date}

Sensor-Surface: 2mm (Mechanical Surface Detection)

Electronics: DAE4 Sn509; Calibrated: 2012/07/13

Phantom: ELI 4.0; Type: QDOVA001BA; Serial: xxxx

Measurement SW: DASYS2, Version 52.8 (3);

**Area Scan (81x81x1):** Interpolated grid: dx=1.200 mm, dy=1.200 mm

Maximum value of SAR (interpolated) = 21.8 W/kg

**Zoom Scan (7x7x7)/Cube 0:** Measurement grid: dx=5mm, dy=5mm, dz=5mm

Reference Value = 105.3 V/m; Power Drift = -0.05 dB

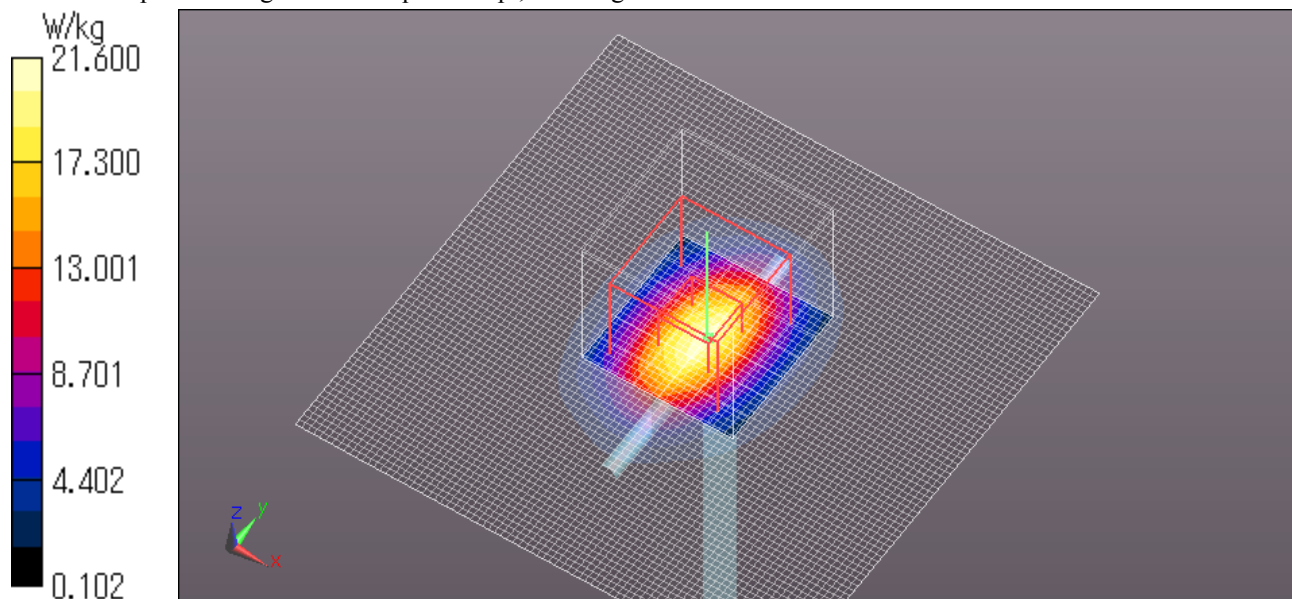
Peak SAR (extrapolated) = 30.0 W/kg

**SAR(1 g) = 13.9 W/kg; SAR(10 g) = 6.28 W/kg**

Maximum value of SAR (measured) = 21.6 W/kg

Date: 2013/03/12

Ambient Temp. : 24.0 degree.C. Liquid Temp.; 23.5 degree.C.



**UL Japan, Inc.**

**Head Office EMC Lab.**

4383-326 Asama-cho, Ise-shi, Mie-ken 516-0021 JAPAN

Telephone: +81 596 24 8999

Facsimile: +81 596 24 8124

**Body 2450MHz System Validation DATA / Dipole2.4GHz / Forward Conducted Power : 250mW**

Communication System: CW; Communication System Band: D2450 (2450.0 MHz); Frequency: 2450 MHz; Duty Cycle: 1:1

Medium parameters used:  $f = 2450$  MHz;  $\sigma = 1.987$  mho/m;  $\epsilon_r = 50.527$ ;  $\rho = 1000$  kg/m<sup>3</sup>

Phantom section: Flat Section

Measurement Standard: DASYS (IEEE/IEC/ANSI C63.19-2007)

DASY5 Configuration

Probe: EX3DV4 - SN3825; ConvF(7.33, 7.33, 7.33); Calibrated: 2012/12/10; \${Probe: Calibration Date}

Sensor-Surface: 2mm (Mechanical Surface Detection)

Electronics: DAE4 Sn509; Calibrated: 2012/07/13

Phantom: ELI 4.0; Type: QDOVA001BA; Serial: xxxx

Measurement SW: DASYS2, Version 52.8 (3);

**Area Scan (81x81x1):** Interpolated grid: dx=1.200 mm, dy=1.200 mm

Maximum value of SAR (interpolated) = 21.7 W/kg

**Zoom Scan (7x7x7)/Cube 0:** Measurement grid: dx=5mm, dy=5mm, dz=5mm

Reference Value = 104.0 V/m; Power Drift = -0.03 dB

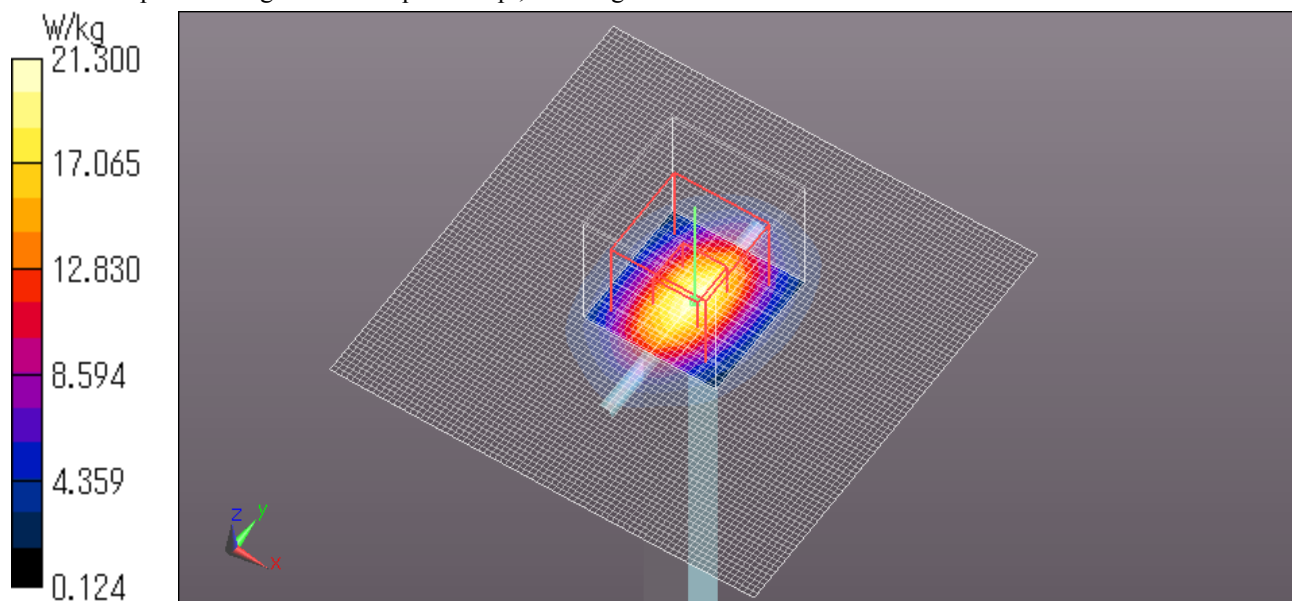
Peak SAR (extrapolated) = 29.1 W/kg

**SAR(1 g) = 13.7 W/kg; SAR(10 g) = 6.25 W/kg**

Maximum value of SAR (measured) = 21.3 W/kg

Date: 2013/03/20

Ambient Temp. : 24.0 degree.C. Liquid Temp.; 23.5 degree.C.



**UL Japan, Inc.**

**Head Office EMC Lab.**

4383-326 Asama-cho, Ise-shi, Mie-ken 516-0021 JAPAN

Telephone: +81 596 24 8999

Facsimile: +81 596 24 8124

2. System Validation Dipole (D2450V2,S/N:713)

Calibration Laboratory of  
 Schmid & Partner  
 Engineering AG  
 Zeughausstrasse 43, 8004 Zurich, Switzerland



S Schweizerischer Kalibrierdienst  
 C Service suisse d'étalonnage  
 S Servizio svizzero di taratura  
 S Swiss Calibration Service

Accredited by the Swiss Accreditation Service (SAS)  
 The Swiss Accreditation Service is one of the signatories to the EA  
 Multilateral Agreement for the recognition of calibration certificates

Accreditation No.: SCS 108

Client **UL Japan (PTT)**

Certificate No: **D2450V2-713\_Sep10**

**CALIBRATION CERTIFICATE**

Object **D2450V2 - SN: 713**

Calibration procedure(s) **QA CAL-05.v7  
 Calibration procedure for dipole validation kits**

Calibration date: **September 06, 2010**

This calibration certificate documents the traceability to national standards, which realize the physical units of measurements (SI).  
 The measurements and the uncertainties with confidence probability are given on the following pages and are part of the certificate.

All calibrations have been conducted in the closed laboratory facility: environment temperature (22 ± 3)°C and humidity < 70%.

Calibration Equipment used (M&TE critical for calibration)

Primary Standards	ID #	Cal Date (Certificate No.)	Scheduled Calibration
Power meter EPM-442A	GB37480704	06-Oct-09 (No. 217-01086)	Oct-10
Power sensor HP 8481A	US37292783	06-Oct-09 (No. 217-01086)	Oct-10
Reference 20 dB Attenuator	SN: 5086 (20g)	30-Mar-10 (No. 217-01158)	Mar-11
Type-N mismatch combination	SN: 5047.2 / 06327	30-Mar-10 (No. 217-01162)	Mar-11
Reference Probe ES3DV3	SN: 3205	30-Apr-10 (No. ES3-3205_Apr10)	Apr-11
DAE4	SN: 601	10-Jun-10 (No. DAE4-601_Jun10)	Jun-11
Secondary Standards	ID #	Check Date (in house)	Scheduled Check
Power sensor HP 8481A	MY41092317	18-Oct-02 (in house check Oct-09)	In house check: Oct-11
RF generator R&S SMT-06	100005	4-Aug-99 (in house check Oct-09)	In house check: Oct-11
Network Analyzer HP 8753E	US37390585 S4206	18-Oct-01 (in house check Oct-09)	In house check: Oct-10

Calibrated by: **Claudio Leubler** Laboratory Technician

Approved by: **Katja Pokovic** Technical Manager

Issued: September 8, 2010

This calibration certificate shall not be reproduced except in full without written approval of the laboratory.

**Calibration Laboratory of**  
Schmid & Partner  
Engineering AG  
Zeughausstrasse 43, 8004 Zurich, Switzerland



**S** Schweizerischer Kalibrierdienst  
**C** Service suisse d'étalonnage  
**S** Servizio svizzero di taratura  
**S** Swiss Calibration Service

Accredited by the Swiss Accreditation Service (SAS)  
The Swiss Accreditation Service is one of the signatories to the EA  
Multilateral Agreement for the recognition of calibration certificates

Accreditation No.: **SCS 108**

**Glossary:**

TSL tissue simulating liquid  
ConvF sensitivity in TSL / NORM x,y,z  
N/A not applicable or not measured

**Calibration is Performed According to the Following Standards:**

- a) IEEE Std 1528-2003, "IEEE Recommended Practice for Determining the Peak Spatial-Averaged Specific Absorption Rate (SAR) in the Human Head from Wireless Communications Devices: Measurement Techniques", December 2003
- b) IEC 62209-1, "Procedure to measure the Specific Absorption Rate (SAR) for hand-held devices used in close proximity to the ear (frequency range of 300 MHz to 3 GHz)", February 2005
- c) Federal Communications Commission Office of Engineering & Technology (FCC OET), "Evaluating Compliance with FCC Guidelines for Human Exposure to Radiofrequency Electromagnetic Fields; Additional Information for Evaluating Compliance of Mobile and Portable Devices with FCC Limits for Human Exposure to Radiofrequency Emissions", Supplement C (Edition 01-01) to Bulletin 65

**Additional Documentation:**

- d) DASY4/5 System Handbook

**Methods Applied and Interpretation of Parameters:**

- *Measurement Conditions:* Further details are available from the Validation Report at the end of the certificate. All figures stated in the certificate are valid at the frequency indicated.
- *Antenna Parameters with TSL:* The dipole is mounted with the spacer to position its feed point exactly below the center marking of the flat phantom section, with the arms oriented parallel to the body axis.
- *Feed Point Impedance and Return Loss:* These parameters are measured with the dipole positioned under the liquid filled phantom. The impedance stated is transformed from the measurement at the SMA connector to the feed point. The Return Loss ensures low reflected power. No uncertainty required.
- *Electrical Delay:* One-way delay between the SMA connector and the antenna feed point. No uncertainty required.
- *SAR measured:* SAR measured at the stated antenna input power.
- *SAR normalized:* SAR as measured, normalized to an input power of 1 W at the antenna connector.
- *SAR for nominal TSL parameters:* The measured TSL parameters are used to calculate the nominal SAR result.

**UL Japan, Inc.**

**Head Office EMC Lab.**

4383-326 Asama-cho, Ise-shi, Mie-ken 516-0021 JAPAN

Telephone: +81 596 24 8999

Facsimile: +81 596 24 8124

### Measurement Conditions

DASY system configuration, as far as not given on page 1.

DASY Version	DASY5	V52.2
Extrapolation	Advanced Extrapolation	
Phantom	Modular Flat Phantom V5.0	
Distance Dipole Center - TSL	10 mm	with Spacer
Zoom Scan Resolution	dx, dy, dz = 5 mm	
Frequency	2450 MHz ± 1 MHz	

### Head TSL parameters

The following parameters and calculations were applied.

	Temperature	Permittivity	Conductivity
Nominal Head TSL parameters	22.0 °C	39.2	1.80 mho/m
Measured Head TSL parameters	(22.0 ± 0.2) °C	39.0 ± 6 %	1.74 mho/m ± 6 %
Head TSL temperature during test	(21.8 ± 0.2) °C	----	----

### SAR result with Head TSL

SAR averaged over 1 cm <sup>3</sup> (1 g) of Head TSL	Condition	
SAR measured	250 mW input power	12.9 mW / g
SAR normalized	normalized to 1W	51.6 mW / g
SAR for nominal Head TSL parameters	normalized to 1W	<b>52.4 mW / g ± 17.0 % (k=2)</b>

SAR averaged over 10 cm <sup>3</sup> (10 g) of Head TSL	condition	
SAR measured	250 mW input power	6.08 mW / g
SAR normalized	normalized to 1W	24.3 mW / g
SAR for nominal Head TSL parameters	normalized to 1W	<b>24.4 mW / g ± 16.5 % (k=2)</b>

### Body TSL parameters

The following parameters and calculations were applied.

	Temperature	Permittivity	Conductivity
Nominal Body TSL parameters	22.0 °C	52.7	1.95 mho/m
Measured Body TSL parameters	(22.0 ± 0.2) °C	52.5 ± 6 %	1.95 mho/m ± 6 %
Body TSL temperature during test	(22.0 ± 0.2) °C	----	----

### SAR result with Body TSL

SAR averaged over 1 cm <sup>3</sup> (1 g) of Body TSL	Condition	
SAR measured	250 mW input power	13.0 mW / g
SAR normalized	normalized to 1W	52.0 mW / g
SAR for nominal Body TSL parameters	normalized to 1W	<b>51.9 mW / g ± 17.0 % (k=2)</b>

SAR averaged over 10 cm <sup>3</sup> (10 g) of Body TSL	condition	
SAR measured	250 mW input power	6.04 mW / g
SAR normalized	normalized to 1W	24.2 mW / g
SAR for nominal Body TSL parameters	normalized to 1W	<b>24.1 mW / g ± 16.5 % (k=2)</b>



## Appendix

### Antenna Parameters with Head TSL

Impedance, transformed to feed point	53.0 $\Omega$ + 1.0 j $\Omega$
Return Loss	- 30.4 dB

### Antenna Parameters with Body TSL

Impedance, transformed to feed point	49.6 $\Omega$ + 2.1 j $\Omega$
Return Loss	- 33.5 dB

### General Antenna Parameters and Design

Electrical Delay (one direction)	1.160 ns
----------------------------------	----------

After long term use with 100W radiated power, only a slight warming of the dipole near the feedpoint can be measured.

The dipole is made of standard semirigid coaxial cable. The center conductor of the feeding line is directly connected to the second arm of the dipole. The antenna is therefore short-circuited for DC-signals.

No excessive force must be applied to the dipole arms, because they might bend or the soldered connections near the feedpoint may be damaged.

### Additional EUT Data

Manufactured by	SPEAG
Manufactured on	July 05, 2002

## DASY5 Validation Report for Head TSL

Date/Time: 03.09.2010 15:07:26

Test Laboratory: SPEAG, Zurich, Switzerland

**DUT: Dipole 2450 MHz; Type: D2450V2; Serial: D2450V2 - SN:713**

Communication System: CW; Frequency: 2450 MHz; Duty Cycle: 1:1

Medium: HSL U12 BB

Medium parameters used:  $f = 2450$  MHz;  $\sigma = 1.74$  mho/m;  $\epsilon_r = 39$ ;  $\rho = 1000$  kg/m<sup>3</sup>

Phantom section: Flat Section

Measurement Standard: DASY5 (IEEE/IEC/ANSI C63.19-2007)

### DASY5 Configuration:

- Probe: ES3DV3 - SN3205; ConvF(4.53, 4.53, 4.53); Calibrated: 30.04.2010
- Sensor-Surface: 3mm (Mechanical Surface Detection)
- Electronics: DAE4 Sn601; Calibrated: 10.06.2010
- Phantom: Flat Phantom 5.0 (front); Type: QD000P50AA; Serial: 1001
- Measurement SW: DASY52, V52.2 Build 0, Version 52.2.0 (163)
- Postprocessing SW: SEMCAD X, V14.2 Build 2, Version 14.2.2 (1685)

### Head/d=10mm, Pin=250 mW, dist=3.0mm (ES-Probe)/Zoom Scan (7x7x7) (7x7x7)/Cube 0:

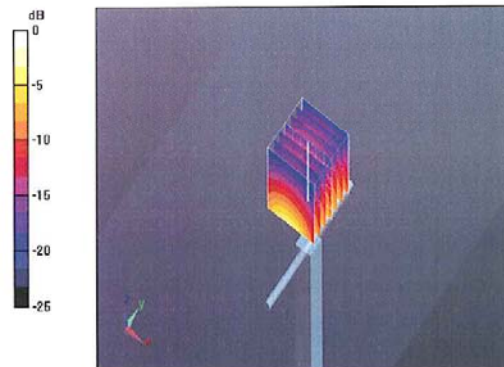
Measurement grid: dx=5mm, dy=5mm, dz=5mm

Reference Value = 100.4 V/m; Power Drift = 0.050 dB

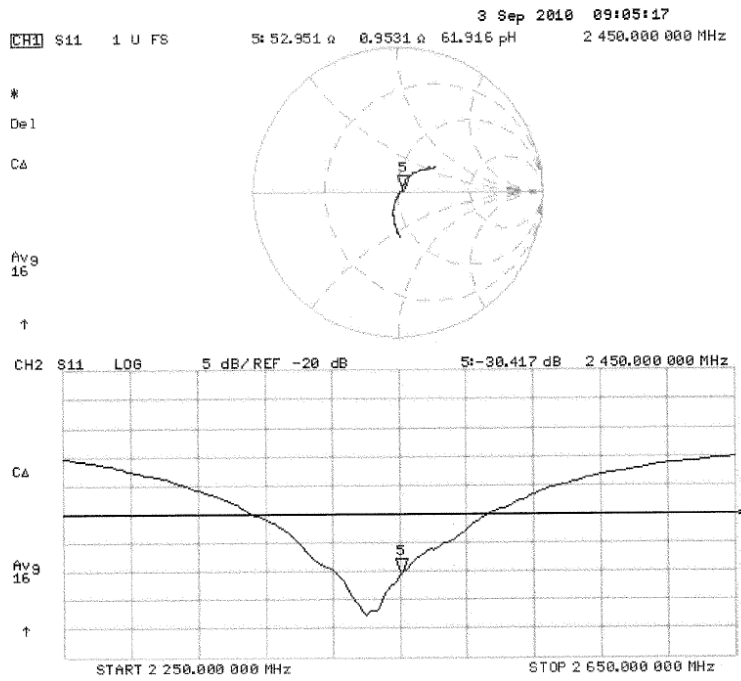
Peak SAR (extrapolated) = 26.3 W/kg

**SAR(1 g) = 12.9 mW/g; SAR(10 g) = 6.08 mW/g**

Maximum value of SAR (measured) = 16.2 mW/g



**Impedance Measurement Plot for Head TSL**



## Validation Report for Body

Date/Time: 06.09.2010 13:42:13

Test Laboratory: SPEAG, Zurich, Switzerland

**DUT: Dipole 2450 MHz; Type: D2450V2; Serial: D2450V2 - SN:713**

Communication System: CW; Frequency: 2450 MHz; Duty Cycle: 1:1

Medium: MSL U12 BB

Medium parameters used:  $f = 2450$  MHz;  $\sigma = 1.95$  mho/m;  $\epsilon_r = 52.5$ ;  $\rho = 1000$  kg/m<sup>3</sup>

Phantom section: Flat Section

Measurement Standard: DASYS (IEEE/IEC/ANSI C63.19-2007)

DASYS Configuration:

- Probe: ES3DV3 - SN3205; ConvF(4.31, 4.31, 4.31); Calibrated: 30.04.2010
- Sensor-Surface: 3mm (Mechanical Surface Detection)
- Electronics: DAE4 Sn601; Calibrated: 10.06.2010
- Phantom: Flat Phantom 5.0 (back); Type: QD000P50AA; Serial: 1002
- Measurement SW: DASYS2, V52.2 Build 0, Version 52.2.0 (163)
- Postprocessing SW: SEMCAD X, V14.2 Build 2, Version 14.2.2 (1685)

**Body/d=10mm, Pin=250 mW, dist=3.0mm (ES-Probe)/Zoom Scan (7x7x7) (7x7x7)/Cube 0:**

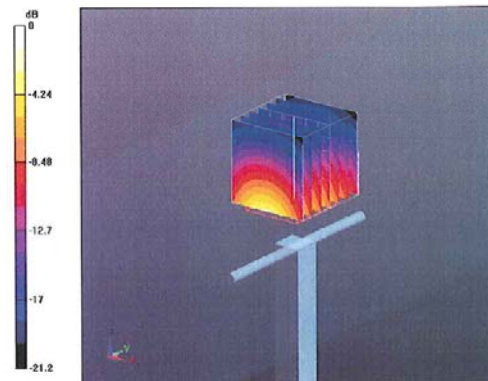
Measurement grid: dx=5mm, dy=5mm, dz=5mm

Reference Value = 95.7 V/m; Power Drift = 0.030 dB

Peak SAR (extrapolated) = 27 W/kg

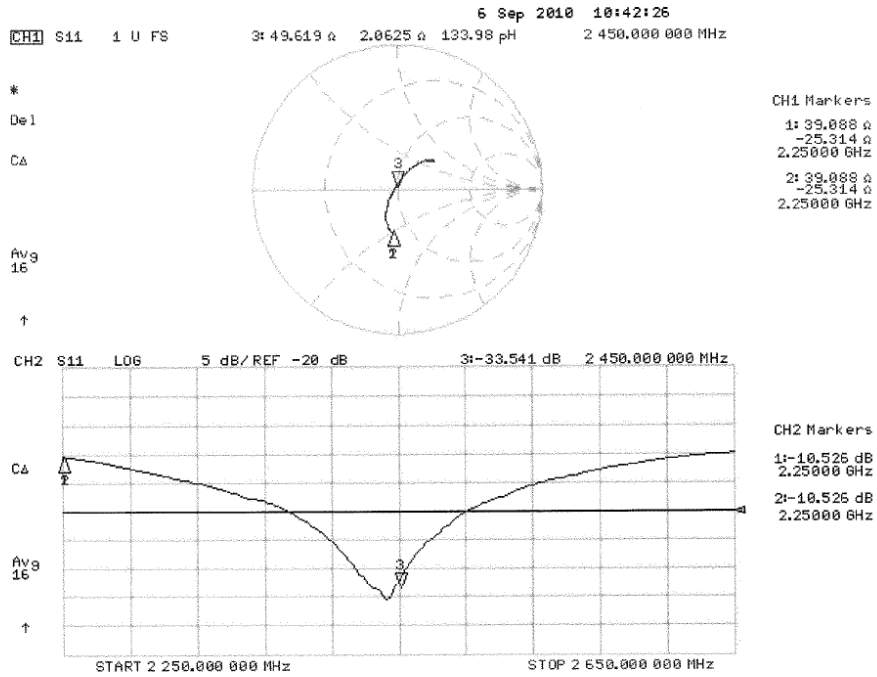
**SAR(1 g) = 13 mW/g; SAR(10 g) = 6.04 mW/g**

Maximum value of SAR (measured) = 16.9 mW/g



0 dB = 16.9mW/g

### Impedance Measurement Plot for Body TSL



D2450V2 Calibration for Impedance and Return-loss

Date	September 21, 2012		
Ambient Temperature	24.5 deg.C	Relative humidity	58%RH

**1. Test environment**

Equipment	Dipole Antenna	Model	D2450V2
Manufacture	Schmid&Partner Engineering AG	Serial	713
Tested by	Hisayoshi Sato/ISE/ULI		

**2. Equipment used**

Control No.	Instrument	Manufacturer	Model No	Serial No	Calibration Date * Interval(mont h)
MNA-01	Network Analyzer	Agilent/HP	E8358A	US41080381	2012/09/14* 12
EST-46	3.5mm Calibration Kit	Agilent	85052D	MY43252869	2012/08/13*12
MCC-141	Microwave Cable	Junkosha	MWX221	1203S212(1m)	2012/04/23*12
MDA-07	Dipole Antenna	Schmid&Partner Engineering AG	D2450V2	713	2010/09/06 * 36
MPSAM-02	SAM Phantom	Schmid&Partner Engineering AG	SAM Twin Phantom V4.0	1333	Pre Check
MOS-24	Thermo-Hygrometer	Custom	CTH-201	0005	2012/05/14 * 12
HSL2450					Daily check
MSL2450					Daily check
SAR room					Daily check

**UL Japan, Inc.**

**Head Office EMC Lab.**

4383-326 Asama-cho, Ise-shi, Mie-ken 516-0021 JAPAN

Telephone: +81 596 24 8999

Facsimile: +81 596 24 8124

### 3. Test Result

Impeadance,Transformed to feed point	Head	Deviation	Tolerance	Result
Calibration (SPEAG) 2010/09/06	53.0 $\Omega$ +1.0j $\Omega$	-	-	-
Calibration(ULJ)2012/09/21	52.26 $\Omega$ -0.43j $\Omega$	-0.74 $\Omega$ -1.43j $\Omega$	+/-5 $\Omega$ +/-5j $\Omega$	Complied

Return loss	Head	Deviation	Tolerance	Result
Calibration (SPEAG) 2010/09/06	-30.4dB	-	-	-
Calibration(ULJ)2012/09/21	-32.96dB	-2.56dB	30.4 *+/-20%	Complied

Impeadance,Transformed to feed point	Body	Deviation	Tolerance	Result
Calibration (SPEAG) 2010/09/06	49.6 $\Omega$ +2.1j $\Omega$	-	-	-
Calibration(ULJ)2012/09/21	48.25 $\Omega$ +0.29j $\Omega$	-1.35 $\Omega$ +1.81j $\Omega$	+/-5 $\Omega$ +/-5j $\Omega$	Complied

Return loss	Body	Deviation	Tolerance	Result
Calibration (SPEAG) 2010/09/06	-33.5dB	-	-	-
Calibration(ULJ)2012/09/21	-34.89dB	-1.39dB	33.5*+/-20%	Complied

\*Tolerance : According to the KDB450824D02

**UL Japan, Inc.**

**Head Office EMC Lab.**

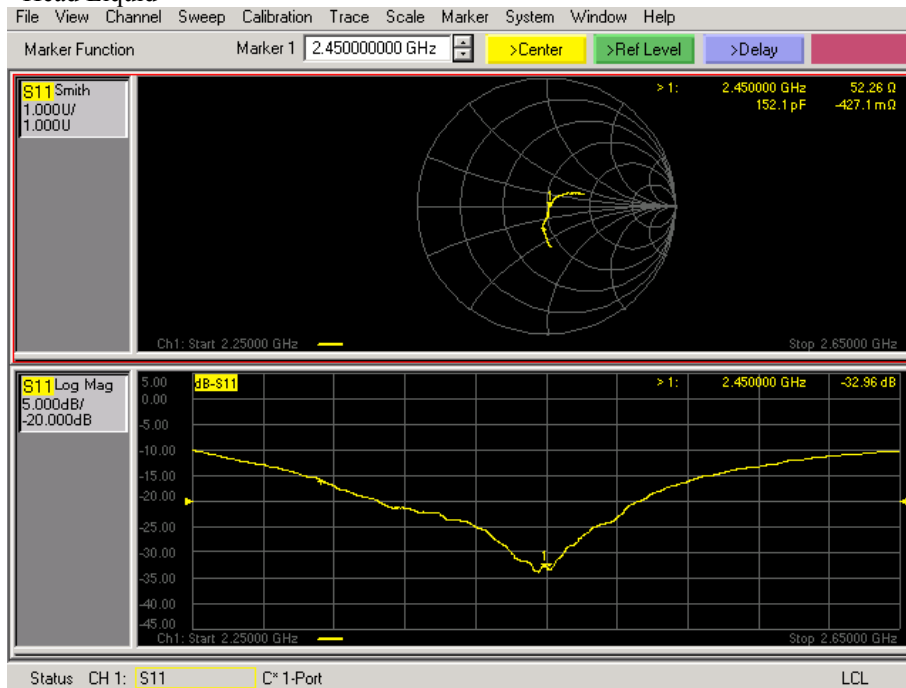
4383-326 Asama-cho, Ise-shi, Mie-ken 516-0021 JAPAN

Telephone: +81 596 24 8999

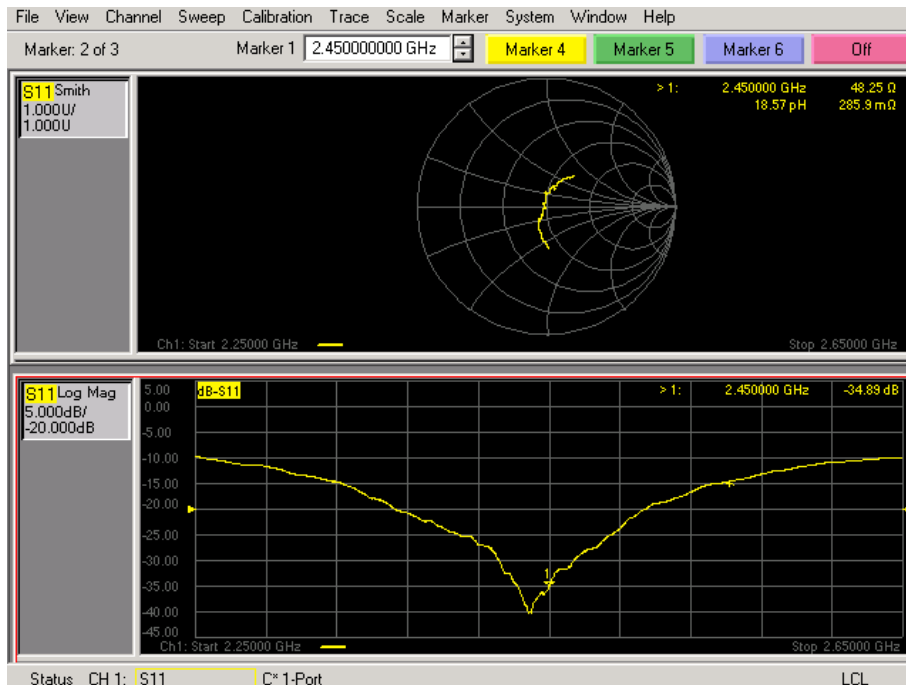
Facsimile: +81 596 24 8124

### Measurement Plots

#### <Head Liquid>



#### <Body Liquid>



UL Japan, Inc.

Head Office EMC Lab.

4383-326 Asama-cho, Ise-shi, Mie-ken 516-0021 JAPAN

Telephone: +81 596 24 8999

Facsimile: +81 596 24 8124



### 3. Validation uncertainty

The uncertainty budget has been determined for the DASY5 measurement system according to the SPEAG documents[2] and is given in the following Table.

Error Description	Uncertainty value $\pm$	Probability distribution	divisor	(ci) lg	Standard (lg)	vi or v <sub>eff</sub>
<b>Measurement System</b>						
Probe calibration	$\pm 6.00$	Normal	1	1	$\pm 6.00$	$\infty$
Axial isotropy of the probe	$\pm 4.7$	Rectangular	$\sqrt{3}$	1	$\pm 2.7$	$\infty$
Spherical isotropy of the probe	$\pm 9.6$	Rectangular	$\sqrt{3}$	0	$\pm 0.0$	$\infty$
Boundary effects	$\pm 1.0$	Rectangular	$\sqrt{3}$	1	$\pm 0.6$	$\infty$
Probe linearity	$\pm 4.7$	Rectangular	$\sqrt{3}$	1	$\pm 2.7$	$\infty$
Detection limit	$\pm 1.0$	Rectangular	$\sqrt{3}$	1	$\pm 0.6$	$\infty$
Modulation response	$\pm 0.0$	Rectangular	$\sqrt{3}$	1	$\pm 0.0$	$\infty$
Readout electronics	$\pm 0.3$	Normal	1	1	$\pm 0.3$	$\infty$
Response time	$\pm 0.0$	Rectangular	$\sqrt{3}$	1	$\pm 0.0$	$\infty$
Integration time	$\pm 0.0$	Rectangular	$\sqrt{3}$	1	$\pm 0.0$	$\infty$
RF ambient Noise	$\pm 1.0$	Rectangular	$\sqrt{3}$	1	$\pm 0.6$	$\infty$
RF ambient Reflections	$\pm 1.0$	Rectangular	$\sqrt{3}$	1	$\pm 0.6$	$\infty$
Probe Positioner	$\pm 0.8$	Rectangular	$\sqrt{3}$	1	$\pm 0.5$	$\infty$
Probe positioning	$\pm 6.7$	Rectangular	$\sqrt{3}$	1	$\pm 3.9$	$\infty$
Max.SAR Eval.	$\pm 2.0$	Rectangular	$\sqrt{3}$	1	$\pm 1.2$	$\infty$
<b>Dipole Related</b>						
Deviation of exp.dipole	$\pm 5.5$	Rectangular	$\sqrt{3}$	1	$\pm 3.2$	$\infty$
Dipole Axis to Liquid Distance	$\pm 2.0$	Rectangular	$\sqrt{3}$	1	$\pm 1.2$	$\infty$
Input power and SAR drift meas.	$\pm 3.4$	Rectangular	$\sqrt{3}$	1	$\pm 2.0$	$\infty$
<b>Phantom and Setup</b>						
Phantom uncertainty	$\pm 4.0$	Rectangular	$\sqrt{3}$	1	$\pm 2.3$	$\infty$
Liquid conductivity (target)	$\pm 5.0$	Rectangular	$\sqrt{3}$	0.78	$\pm 2.3$	$\infty$
Liquid conductivity (meas.)	+ 5.0	Normal	1	0.26	+ 1.3	$\infty$
Liquid permittivity (target)	$\pm 5.0$	Rectangular	$\sqrt{3}$	0.78	$\pm 2.3$	$\infty$
Liquid permittivity (meas.)	- 5.0	Normal	1	0.23	- 1.2	$\infty$
Liquid conductivity - temp.unc (below 2deg.C.)	$\pm 1.7$	Rectangular	$\sqrt{3}$	0.78	$\pm 0.8$	$\infty$
Liquid permittivity - temp.unc (below 2deg.C.)	$\pm 0.3$	Rectangular	$\sqrt{3}$	0.23	$\pm 0.0$	$\infty$
<b>Combined Standard Uncertainty</b>					<b><math>\pm 10.157</math></b>	
<b>Expanded Uncertainty (k=2)</b>					<b><math>\pm 20.3</math></b>	

**Note: This uncertainty budget for validation is worst-case.**

**UL Japan, Inc.**

**Head Office EMC Lab.**

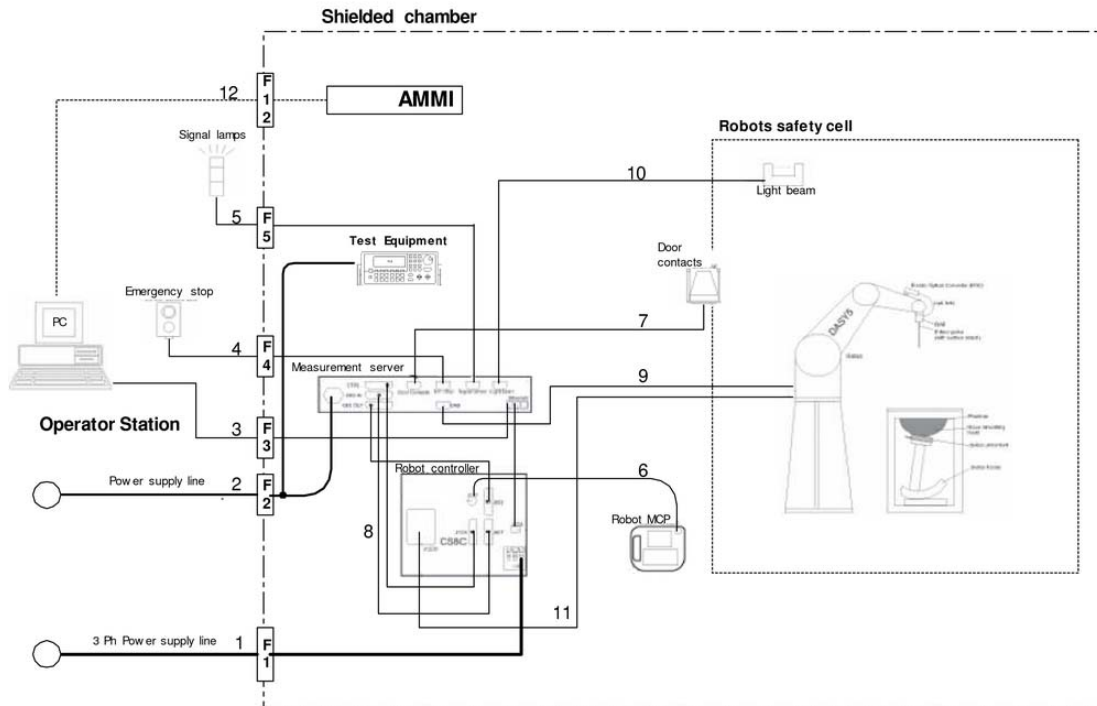
4383-326 Asama-cho, Ise-shi, Mie-ken 516-0021 JAPAN

Telephone: +81 596 24 8999

Facsimile: +81 596 24 8124

## APPENDIX 3 : System specifications

### 1. Configuration and peripherals



The DASYS system for performing compliance tests consist of the following items:

- a) A standard high precision 6-axis robot (Stäubli RX family) with controller and software.  
An arm extension for accommodating the data acquisition electronics (DAE).
- b) An isotropic field probe optimized and calibrated for the targeted measurement.
- c) A data acquisition electronic (DAE), which performs the signal amplification, signal multiplexing, AD-conversion, offset measurements, mechanical surface detection, collision detection, etc. The unit is battery powered with standard or rechargeable batteries. The signal is optically transmitted to the EOC.
- d) The Electro-optical converter (EOC) performs the conversion between optical and electrical of the signals for the digital communication to the DAE and for the analog signal from the optical surface detection.  
The EOC is connected to the measurement server.
- e) The function of the measurement server is to perform the time critical tasks such as signal filtering, control of the robot operation and fast movement interrupts.
- f) The Light Beam used is for probe alignment. This improves the (absolute) accuracy of the probe positioning.
- g) A computer running WinXP and the DASYS software.
- h) Remote control with teaches pendant and additional circuitry for robot safety such as warning lamps, etc.
- i) The phantom, the device holder and other accessories according to the targeted measurement.

**UL Japan, Inc.**

**Head Office EMC Lab.**

4383-326 Asama-cho, Ise-shi, Mie-ken 516-0021 JAPAN

Telephone: +81 596 24 8999

Facsimile: +81 596 24 8124

## 2. Specifications

### a) Robot TX60L

Number of Axes	:	6
Nominal Load	:	2 kg
Maximum Load	:	5kg
Reach	:	920mm
Repeatability	:	+/-0.03mm
Control Unit	:	CS8c
Programming Language	:	VAL3
Weight	:	52.2kg
Manufacture	:	Stäubli Robotics

### b) E-Field Probe

Model	:	EX3DV4
Serial No.	:	3825,
Construction	:	Symmetrical design with triangular core Built-in shielding against static charges PEEK enclosure material (resistant to organic solvents, e.g., glycol ether)
Frequency	:	10 MHz to > 6 GHz Linearity: $\pm 0.2$ dB (30 MHz to 6 GHz)
Directivity	:	+/-0.3 dB in HSL (rotation around probe axis) +/-0.5 dB in tissue material (rotation normal probe axis)
Dynamic Range	:	10 $\mu$ W/g to > 100 mW/g; Linearity +/-0.2 dB (noise: typically < 1 $\mu$ W/g)
Dimensions	:	Overall length: 337 mm (Tip: 20 mm) Tip diameter: 2.5mm (Body: 12 mm) Typical distance from probe tip to dipole centers: 1 mm
Application	:	Highprecision dosimetric measurement in any exposure scenario (e.g., very strong gradient fields). Only probe which enables compliance testing for frequencies up to 6GHz with precision of better 30%.
Manufacture	:	Schimid & Partner Engineering AG



EX3DV4 E-field Probe

Model	:	ET3DV6
Serial No.	:	1685
Construction	:	Symmetrical design with triangular core Built-in shielding against static charges PEEK enclosure material (resistant to organic solvents, e.g., glycol ether)
Frequency	:	10 MHz to 2.3 GHz Linearity: $\pm 0.2$ dB (30 MHz to 2.3 GHz)
Directivity	:	+/-0.2 dB in HSL (rotation around probe axis) +/-0.4 dB in tissue material (rotation normal probe axis)
Dynamic Range	:	5 $\mu$ W/g to > 100 mW/g; Linearity: $\pm 0.2$ dB
Optical Surface Detection	:	$\pm 0.2$ mm repeatability in air and clear liquids over diffuse reflecting surfaces
Dimensions	:	Overall length: 337 mm (Tip: 16 mm) Tip diameter: 6.8 mm (Body: 12 mm) Distance from probe tip to dipole centers: 2.7 mm
Application	:	General dosimetric measurements up to 2.3 GHz Compliance tests of mobile phones Fast automatic scanning in arbitrary phantoms
Manufacture	:	Schimid & Partner Engineering AG



ET3DV6 E-field Probe

UL Japan, Inc.

Head Office EMC Lab.

4383-326 Asama-cho, Ise-shi, Mie-ken 516-0021 JAPAN

Telephone: +81 596 24 8999

Facsimile: +81 596 24 8124

#### c)Data Acquisition Electronic (DAE4)

<b>Features</b>	:	Signal amplifier, multiplexer, A/D converter and control logic Serial optical link for communication with DASY5 embedded system (fully remote controlled) Two step probe touch detector for mechanical surface detection and emergency robot stop
<b>Measurement Range</b>	:	-100 to +300 mV (16 bit resolution and two range settings: 4mV, 400mV)
<b>Input Offset voltage</b>	:	< 5 $\mu$ V (with auto zero)
<b>Input Resistance</b>	:	200 M $\Omega$
<b>Input Bias Current</b>	:	< 50 fA
<b>Battery Power</b>	:	> 10 h of operation (with two 9.6 V NiMH accus)
<b>Dimension</b>	:	60 x 60 x 68 mm
<b>Manufacture</b>	:	Schimid & Partner Engineering AG

#### d)Electro-Optic Converter (EOC)

<b>Version</b>	:	EOC 61
<b>Description</b>	:	for TX60 robot arm, including proximity sensor
<b>Manufacture</b>	:	Schimid & Partner Engineering AG

#### e)DASY5 Measurement server

<b>Features</b>	:	Intel ULV Celeron 400MHz 128MB chip disk and 128MB RAM 16 Bit A/D converter for surface detection system Vacuum Fluorescent Display Robot Interface Serial link to DAE (with watchdog supervision) Door contact port (Possibility to connect a light curtain) Emergency stop port (to connect the remote control) Signal lamps port Light beam port Three Ethernet connection ports Two USB 2.0 Ports Two serial links Expansion port for future applications
<b>Dimensions (L x W x H)</b>	:	440 x 241 x 89 mm
<b>Manufacture</b>	:	Schimid & Partner Engineering AG

#### f) Light Beam Switches

<b>Version</b>	:	LB5
<b>Dimensions (L x H)</b>	:	110 x 80 mm
<b>Thickness</b>	:	12 mm
<b>Beam-length</b>	:	80 mm
<b>Manufacture</b>	:	Schimid & Partner Engineering AG

#### g)Software

<b>Item</b>	:	Dosimetric Assesment System DASY5
<b>Type No.</b>	:	SD 000 401A, SD 000 402A
<b>Software version No.</b>	:	DASY52, Version 52.6 (1)
<b>Manufacture / Origin</b>	:	Schimid & Partner Engineering AG

#### h)Robot Controll Unit

<b>Weight</b>	:	70 Kg
<b>AC Input Voltage</b>	:	selectable
<b>Manufacturer</b>	:	Stäubli Robotics

---

UL Japan, Inc.

Head Office EMC Lab.

4383-326 Asama-cho, Ise-shi, Mie-ken 516-0021 JAPAN

Telephone: +81 596 24 8999

Facsimile: +81 596 24 8124

### i)Phantom and Device Holder

#### Phantom

<b>Type</b>	:	SAM Twin Phantom V4.0
<b>Description</b>	:	The shell corresponds to the specifications of the Specific Anthropomorphic Mannequin (SAM) phantom defined in IEEE 1528 and IEC 62209-1. It enables the dosimetric evaluation of left and right hand phone usage as well as body mounted usage at the flat phantom region. A cover prevents evaporation of the liquid. Reference markings on the phantom allow the complete setup of all predefined phantom positions and measurement grids by teaching three points with the robot.
<b>Material</b>	:	Vinylester, glass fiber reinforced (VE-GF)
<b>Shell Material</b>	:	Fiberglass
<b>Thickness</b>	:	2.0 +/-0.2 mm
<b>Dimensions</b>	:	Length: 1000 mm Width: 500 mm Height: adjustable feet
<b>Volume</b>	:	Approx. 25 liters
<b>Manufacture</b>	:	Schimid & Partner Engineering AG

<b>Type</b>	:	2mm Flat phantom ERI4.0
<b>Description</b>	:	Phantom for compliance testing of handheld and body-mounted wireless devices in the frequency range of 30 MHz to 6 GHz. ELI4 is fully compatible with the latest draft of the standard IEC 62209 Part II and all known tissue simulating liquids. ELI4 has been optimized regarding its performance and can be integrated into our standard phantom tables. A cover prevents evaporation of the liquid. Reference markings on the phantom allow installation of the complete setup, including all predefined phantom positions and measurement grids, by teaching three points. The phantom is supported by software version DASY4.5 and higher and is compatible with all SPEAG dosimetric probes and dipoles.
<b>Material</b>	:	Vinylester, glass fiber reinforced (VE-GF)
<b>Shell Thickness</b>	:	2.0 ± 0.2 mm (sagging: <1%)
<b>Filling Volume</b>	:	approx. 30 liters
<b>Dimensions</b>	:	Major ellipse axis: 600 mm Minor axis: 400 mm
<b>Manufacture</b>	:	Schimid & Partner Engineering AG

#### Device Holder

In combination with the Twin SAM Phantom V4.0/V4.0c or ELI4, the Mounting Device enables the rotation of the mounted transmitter device in spherical coordinates. Rotation point is the ear opening point. Transmitter devices can be easily and accurately positioned according to IEC, IEEE, FCC or other specifications. The device holder can be locked for positioning at different phantom sections (left head, right head, flat).

<b>Material</b>	:	POM
-----------------	---	-----

#### Laptio Extensions kit

Simple but effective and easy-to-use extension for Mounting Device that facilitates the testing of larger devices according to IEC 62209-2 (e.g., laptops, cameras, etc.). It is lightweight and fits easily on the upper part of the Mounting Device in place of the phone positioner. The extension is fully compatible with the Twin-SAM, ELI4 Phantoms.

<b>Material</b>	:	POM, Acrylic glass, Foam
-----------------	---	--------------------------

#### Urethane

For this measurement, the urethane foam was used as device holder.

---

**UL Japan, Inc.**

**Head Office EMC Lab.**

4383-326 Asama-cho, Ise-shi, Mie-ken 516-0021 JAPAN

Telephone: +81 596 24 8999

Facsimile: +81 596 24 8124

**j) Simulated Tissues (Liquid)**

The following tissue formulations are provided for reference only as some of the parameters have not been thoroughly verified. The composition of ingredients may be modified accordingly to achieve the desired target tissue parameters required for routine SAR evaluation.

Mixture (%)	Frequency (MHz)									
	450		900		1800		1950		2450	
Tissue Type	Head	Body	Head	Body	Head	Body	Head	Body	Head	Body
Water	38.91	46.21	40.29	50.75	55.24	70.17	55.41	69.79	55.0	68.64
Sugar	56.93	51.17	57.90	48.21	-	-	-	-	-	-
Cellulose	0.25	0.18	0.24	0.00	-	-	-	-	-	-
Salt (NaCl)	3.79	2.34	1.38	0.94	0.31	0.39	0.08	0.2	-	-
Preventol	0.12	0.08	0.18	0.10	-	-	-	-	-	-
DGMBE	-	-	-	-	44.45	29.44	44.51	30.0	45.0	31.37
Dielectric Constant	43.42	58.0	42.54	56.1	42.0	56.8	39.9	54.0	39.8	52.5
Conductivity (S/m)	0.85	0.83	0.91	0.95	1.0	1.07	1.42	1.45	1.88	1.78

Note: DGMBE (Diethylenglycol-monobuthyl ether)

The simulated tissue (liquid) of 1800MHz was used for the test frequency of 1700MHz to 1800MHz.

Mixture (%)	Frequency (MHz)
	750
Tissue Type	Head and Body
Water	35-58%
Sugar	40-60%
Cellulose	<0.3%
Salt (NaCl)	0-6%
Preventol	0.1-0.7%
DGMBE	-

Mixture (%)	Frequency (MHz)	
	5800	
Tissue Type	Head	Body
Water	64.0	78.0
Mineral Oil	18.0	11.0
Emulsifiers	15.0	9.0
Additives and salt	3.0	2.0

**Decision on Simulated Tissues of 750MHz**

In the current standards (e.g., IEC62209-2, IEEE P1528, OET 65 Supplement C), the dielectric parameters suggested for head and body tissue simulating liquid are given at 450MHz and 835MHz. As an intermediate solution, dielectric parameters for the frequencies between 450 to 835MHz were obtained using linear interpolation. Therefore the dielectric parameter of 750MHz (The frequency for the validation) was decided as following.

f (MHz)	Head Tissue		Body Tissue		Reference
	$\epsilon_r$	$\sigma$ [mho/m]	$\epsilon_r$	$\sigma$ [mho/m]	
450	43.5	0.87	56.7	0.94	Standard
750	41.94	0.89	55.5	0.96	Interpolated
835	41.5	0.9	55.2	0.97	Standard

Standard and interpolated dielectric parameters for head and body tissue simulating liquid in the frequency range 450 to 835MHz.

UL Japan, Inc.

Head Office EMC Lab.

4383-326 Asama-cho, Ise-shi, Mie-ken 516-0021 JAPAN

Telephone: +81 596 24 8999

Facsimile: +81 596 24 8124

**Decision on Simulated Tissues of 1750MHz**

In the current standards (e.g., IEC62209-2, IEEE P1528, OET 65 Supplement C), the dielectric parameters suggested for head and body tissue simulating liquid are given at 1610MHz and 1800MHz. As an intermediate solution, dielectric parameters for the frequencies between 1610 to 1800MHz were obtained using linear interpolation. Therefore the dielectric parameter of 1750MHz(The frequency for the validation) was decided as following.

f (MHz)	Head Tissue		Body Tissue		Reference
	$\epsilon_r$	$\sigma$ [mho/m]	$\epsilon_r$	$\sigma$ [mho/m]	
1450	40.5	0.87	54.0	1.30	Standard
1610	40.3	1.29	53.8	1.40	Standard
1750	40.08	1.37	53.43	1.49	Interpolated
1800	40.0	1.40	53.3	1.52	Standard

Standard and interpolated dielectric parameters for head and body tissue simulating liquid in the frequency range 1610 to 1800MHz.

**Decision on Simulated Tissues of 5GHz band**

In the current standards (e.g., IEC62209-2, IEEE P1528, OET 65 Supplement C), the dielectric parameters suggested for head and body tissue simulating liquid are given at 3000MHz and 5800MHz. As an intermediate solution, dielectric parameters for the frequencies between 5000to 5800 MHz were obtained using linear interpolation. Therefore the dielectric parameters of 5200MHz,5300MHz,5600MHz and 5500MHz(The frequency for the validation) were decided as following.

f (MHz)	Head Tissue		Body Tissue		Reference
	$\epsilon_r$	$\sigma$ [mho/m]	$\epsilon_r$	$\sigma$ [mho/m]	
3000	38.5	2.40	52.0	2.73	Standard
5800	35.3	5.27	48.2	6.00	Standard
5000	36.2	4.45	49.3	5.07	Interpolated
5100	36.1	4.55	49.1	5.18	Interpolated
5200	36.0	4.66	49.0	5.30	Interpolated
5300	35.9	4.76	48.9	5.42	Interpolated
5400	35.8	4.86	48.7	5.53	Interpolated
5500	35.6	4.96	48.6	5.65	Interpolated
5600	35.5	5.07	48.5	5.77	Interpolated
5700	35.4	5.17	48.3	5.88	Interpolated

Standard and interpolated dielectric parameters for head and body tissue simulating liquid in the frequency range 3000 to 5800MHz.

**UL Japan, Inc.**

**Head Office EMC Lab.**

4383-326 Asama-cho, Ise-shi, Mie-ken 516-0021 JAPAN  
Telephone: +81 596 24 8999  
Facsimile: +81 596 24 8124

**3. Dosimetric E-Field Probe Calibration (EX3DV4, S/N: 3825)**

**Calibration Laboratory of  
Schmid & Partner  
Engineering AG**  
Zeughausstrasse 43, 8004 Zurich, Switzerland



**S** Schweizerischer Kalibrierdienst  
**S** Service suisse d'étalonnage  
**S** Servizio svizzero di taratura  
**S** Swiss Calibration Service

Accredited by the Swiss Accreditation Service (SAS)  
The Swiss Accreditation Service is one of the signatories to the EA  
Multilateral Agreement for the recognition of calibration certificates

Accreditation No.: **SCS 108**

Client **UL Japan (PTT)**

Certificate No: **EX3-3825\_Dec12**

CALIBRATION CERTIFICATE	
Object	EX3DV4 - SN:3825
Calibration procedure(s)	QA CAL-01.v8, QA CAL-14.v3, QA CAL-23.v4, QA CAL-25.v4 Calibration procedure for dosimetric E-field probes
Calibration date:	December 10, 2012
This calibration certificate documents the traceability to national standards, which realize the physical units of measurements (SI). The measurements and the uncertainties with confidence probability are given on the following pages and are part of the certificate.	
All calibrations have been conducted in the closed laboratory facility: environment temperature (22 ± 3)°C and humidity < 70%.	
Calibration Equipment used (M&TE critical for calibration)	

Primary Standards	ID	Cal Date (Certificate No.)	Scheduled Calibration
Power meter E4419B	GB41293874	29-Mar-12 (No. 217-01508)	Apr-13
Power sensor E4412A	MY41498087	29-Mar-12 (No. 217-01508)	Apr-13
Reference 3 dB Attenuator	SN: S5054 (3c)	27-Mar-12 (No. 217-01531)	Apr-13
Reference 20 dB Attenuator	SN: S5086 (20b)	27-Mar-12 (No. 217-01529)	Apr-13
Reference 30 dB Attenuator	SN: S5129 (30b)	27-Mar-12 (No. 217-01532)	Apr-13
Reference Probe ES3DV2	SN: 3013	29-Dec-11 (No. ES3-3013_Dec11)	Dec-12
DAE4	SN: 660	20-Jun-12 (No. DAE4-660_Jun12)	Jun-13
Secondary Standards	ID	Check Date (in house)	Scheduled Check
RF generator HP 8648C	US3642U01700	4-Aug-99 (in house check Apr-11)	In house check: Apr-13
Network Analyzer HP 8753E	US37390585	18-Oct-01 (in house check Oct-12)	In house check: Oct-13

	Name	Function	Signature
Calibrated by:	Jeton Kastrati	Laboratory Technician	
Approved by:	Katja Pokovic	Technical Manager	
			Issued: December 11, 2012
This calibration certificate shall not be reproduced except in full without written approval of the laboratory.			



Calibration Laboratory of  
Schmid & Partner  
Engineering AG  
Zeughausstrasse 43, 8004 Zurich, Switzerland



S Schweizerischer Kalibrierdienst  
C Service suisse d'étalonnage  
S Servizio svizzero di taratura  
S Swiss Calibration Service

Accredited by the Swiss Accreditation Service (SAS)  
The Swiss Accreditation Service is one of the signatories to the EA  
Multilateral Agreement for the recognition of calibration certificates

Accreditation No.: SCS 108

**Glossary:**

TSL	tissue simulating liquid
NORM <sub>x,y,z</sub>	sensitivity in free space
ConvF	sensitivity in TSL / NORM <sub>x,y,z</sub>
DCP	diode compression point
CF	crest factor (1/duty_cycle) of the RF signal
A, B, C	modulation dependent linearization parameters
Polarization $\varphi$	$\varphi$ rotation around probe axis
Polarization $\vartheta$	$\vartheta$ rotation around an axis that is in the plane normal to probe axis (at measurement center), i.e., $\vartheta = 0$ is normal to probe axis

**Calibration is Performed According to the Following Standards:**

- IEEE Std 1528-2003, "IEEE Recommended Practice for Determining the Peak Spatial-Averaged Specific Absorption Rate (SAR) in the Human Head from Wireless Communications Devices: Measurement Techniques", December 2003
- IEC 62209-1, "Procedure to measure the Specific Absorption Rate (SAR) for hand-held devices used in close proximity to the ear (frequency range of 300 MHz to 3 GHz)", February 2005

**Methods Applied and Interpretation of Parameters:**

- NORM<sub>x,y,z</sub>: Assessed for E-field polarization  $\vartheta = 0$  ( $f \leq 900$  MHz in TEM-cell;  $f > 1800$  MHz: R22 waveguide). NORM<sub>x,y,z</sub> are only intermediate values, i.e., the uncertainties of NORM<sub>x,y,z</sub> does not affect the E<sup>2</sup>-field uncertainty inside TSL (see below ConvF).
- NORM(f)<sub>x,y,z</sub> = NORM<sub>x,y,z</sub> \* frequency\_response (see Frequency Response Chart). This linearization is implemented in DASy4 software versions later than 4.2. The uncertainty of the frequency response is included in the stated uncertainty of ConvF.
- DCP<sub>x,y,z</sub>: DCP are numerical linearization parameters assessed based on the data of power sweep with CW signal (no uncertainty required). DCP does not depend on frequency nor media.
- PAR: PAR is the Peak to Average Ratio that is not calibrated but determined based on the signal characteristics
- A<sub>x,y,z</sub>; B<sub>x,y,z</sub>; C<sub>x,y,z</sub>; VR<sub>x,y,z</sub>: A, B, C are numerical linearization parameters assessed based on the data of power sweep for specific modulation signal. The parameters do not depend on frequency nor media. VR is the maximum calibration range expressed in RMS voltage across the diode.
- ConvF and Boundary Effect Parameters: Assessed in flat phantom using E-field (or Temperature Transfer Standard for  $f \leq 800$  MHz) and inside waveguide using analytical field distributions based on power measurements for  $f > 800$  MHz. The same setups are used for assessment of the parameters applied for boundary compensation (alpha, depth) of which typical uncertainty values are given. These parameters are used in DASy4 software to improve probe accuracy close to the boundary. The sensitivity in TSL corresponds to NORM<sub>x,y,z</sub> \* ConvF whereby the uncertainty corresponds to that given for ConvF. A frequency dependent ConvF is used in DASy version 4.4 and higher which allows extending the validity from  $\pm 50$  MHz to  $\pm 100$  MHz.
- Spherical isotropy (3D deviation from isotropy): in a field of low gradients realized using a flat phantom exposed by a patch antenna.
- Sensor Offset: The sensor offset corresponds to the offset of virtual measurement center from the probe tip (on probe axis). No tolerance required.

UL Japan, Inc.

Head Office EMC Lab.

4383-326 Asama-cho, Ise-shi, Mie-ken 516-0021 JAPAN

Telephone: +81 596 24 8999

Facsimile: +81 596 24 8124

EX3DV4 – SN:3825

December 10, 2012

# Probe EX3DV4

## SN:3825

Manufactured: September 6, 2011  
Calibrated: December 10, 2012

Calibrated for DASY/EASY Systems  
(Note: non-compatible with DASY2 system!)

---

**UL Japan, Inc.**

**Head Office EMC Lab.**

4383-326 Asama-cho, Ise-shi, Mie-ken 516-0021 JAPAN

Telephone: +81 596 24 8999

Facsimile: +81 596 24 8124

EX3DV4-- SN:3825

December 16, 2011

## DASY/EASY - Parameters of Probe: EX3DV4 - SN:3825

### Basic Calibration Parameters

	Sensor X	Sensor Y	Sensor Z	Unc (k=2)
Norm ( $\mu\text{V}/(\text{V}/\text{m})^2$ ) <sup>a</sup>	0.43	0.39	0.43	$\pm 10.1\%$
DCP (mV) <sup>b</sup>	100.7	103.5	99.4	

### Modulation Calibration Parameters

UID	Communication System Name	PAR		A dB	B dB	C dB	VR mV	Unc <sup>c</sup> (k=2)
10000	CW	0.00	X	0.00	0.00	1.00	144.3	$\pm 3.0\%$
			Y	0.00	0.00	1.00	133.8	
			Z	0.00	0.00	1.00	109.4	

The reported uncertainty of measurement is stated as the standard uncertainty of measurement multiplied by the coverage factor k=2, which for a normal distribution corresponds to a coverage probability of approximately 95%.

<sup>a</sup> The uncertainties of NormX,Y,Z do not affect the E<sup>2</sup>-field uncertainty inside TSL (see Pages 5 and 6).

<sup>b</sup> Numerical linearization parameter; uncertainty not required.

<sup>c</sup> Uncertainty is determined using the max. deviation from linear response applying rectangular distribution and is expressed for the square of the field value.

## DASY/EASY - Parameters of Probe: EX3DV4 - SN:3825

### Calibration Parameter Determined in Head Tissue Simulating Media

f (MHz) <sup>C</sup>	Relative Permittivity <sup>F</sup>	Conductivity (S/m) <sup>F</sup>	ConvF X	ConvF Y	ConvF Z	Alpha	Depth (mm)	Unct. (k=2)
750	41.9	0.89	9.80	9.80	9.80	0.13	1.55	± 12.0 %
835	41.5	0.90	9.39	9.39	9.39	0.16	1.39	± 12.0 %
900	41.5	0.97	9.22	9.22	9.22	0.15	1.32	± 12.0 %
1750	40.1	1.37	8.85	8.85	8.85	0.18	1.36	± 12.0 %
1810	40.0	1.40	8.55	8.55	8.55	0.13	1.77	± 12.0 %
1900	40.0	1.40	8.43	8.43	8.43	0.17	1.23	± 12.0 %
2000	40.0	1.40	8.27	8.27	8.27	0.43	0.79	± 12.0 %
2450	39.2	1.80	7.44	7.44	7.44	0.24	1.23	± 12.0 %
2600	39.0	1.96	7.21	7.21	7.21	0.29	0.95	± 12.0 %
5200	36.0	4.66	5.35	5.35	5.35	0.30	1.80	± 13.1 %
5300	35.9	4.76	5.08	5.08	5.08	0.35	1.80	± 13.1 %
5500	35.6	4.96	4.68	4.68	4.68	0.42	1.80	± 13.1 %
5600	35.5	5.07	4.38	4.38	4.38	0.45	1.80	± 13.1 %
5800	35.3	5.27	4.48	4.48	4.48	0.45	1.80	± 13.1 %

<sup>C</sup> Frequency validity of ± 100 MHz only applies for DASY v4.4 and higher (see Page 2), else it is restricted to ± 50 MHz. The uncertainty is the RSS of the ConvF uncertainty at calibration frequency and the uncertainty for the Indicated frequency band.

<sup>F</sup> At frequencies below 3 GHz, the validity of tissue parameters ( $\epsilon$  and  $\sigma$ ) can be relaxed to ± 10% if liquid compensation formula is applied to measured SAR values. At frequencies above 3 GHz, the validity of tissue parameters ( $\epsilon$  and  $\sigma$ ) is restricted to ± 5%. The uncertainty is the RSS of the ConvF uncertainty for indicated target tissue parameters.

EX3DV4- SN:3825

December 16, 2011

## DASY/EASY - Parameters of Probe: EX3DV4 - SN:3825

### Calibration Parameter Determined in Body Tissue Simulating Media

f (MHz) <sup>c</sup>	Relative Permittivity <sup>f</sup>	Conductivity (S/m) <sup>f</sup>	ConvF X	ConvF Y	ConvF Z	Alpha	Depth (mm)	Unct. (k=2)
750	55.5	0.96	9.77	9.77	9.77	0.26	1.05	± 12.0 %
835	55.2	0.97	9.61	9.61	9.61	0.24	1.13	± 12.0 %
900	55.0	1.05	9.42	9.42	9.42	0.20	1.30	± 12.0 %
1750	53.4	1.49	7.87	7.87	7.87	0.10	2.72	± 12.0 %
1810	53.3	1.52	7.69	7.69	7.69	0.11	2.21	± 12.0 %
1900	53.3	1.52	7.48	7.48	7.48	0.10	1.76	± 12.0 %
2000	53.3	1.52	7.64	7.64	7.64	0.21	1.11	± 12.0 %
2450	52.7	1.95	7.23	7.23	7.23	0.78	0.50	± 12.0 %
2600	52.5	2.16	7.14	7.14	7.14	0.80	0.50	± 12.0 %
5200	49.0	5.30	4.45	4.45	4.45	0.50	1.90	± 13.1 %
5300	48.9	5.42	4.22	4.22	4.22	0.50	1.90	± 13.1 %
5500	48.6	5.65	3.76	3.76	3.76	0.55	1.90	± 13.1 %
5600	48.5	5.77	3.59	3.59	3.59	0.60	1.90	± 13.1 %
5800	48.2	6.00	4.07	4.07	4.07	0.55	1.90	± 13.1 %

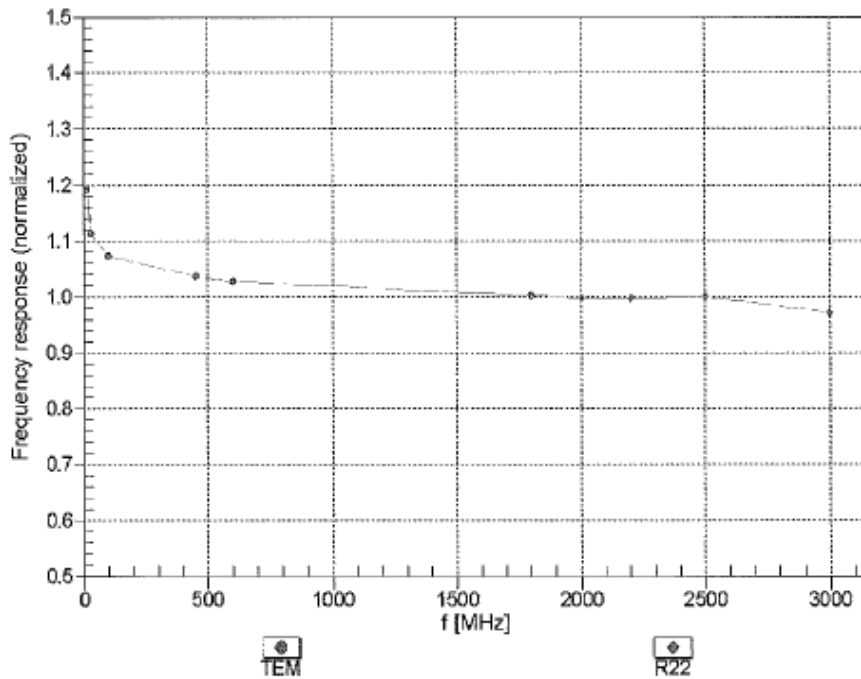
<sup>c</sup> Frequency validity of ± 100 MHz only applies for DASY v4.4 and higher (see Page 2), else it is restricted to ± 50 MHz. The uncertainty is the RSS of the ConvF uncertainty at calibration frequency and the uncertainty for the indicated frequency band.

<sup>f</sup> At frequencies below 3 GHz, the validity of tissue parameters ( $\epsilon$  and  $\sigma$ ) can be relaxed to ± 10% if liquid compensation formula is applied to measured SAR values. At frequencies above 3 GHz, the validity of tissue parameters ( $\epsilon$  and  $\sigma$ ) is restricted to ± 5%. The uncertainty is the RSS of the ConvF uncertainty for indicated target tissue parameters.

EX3DV4--SN:3825

December 16, 2011

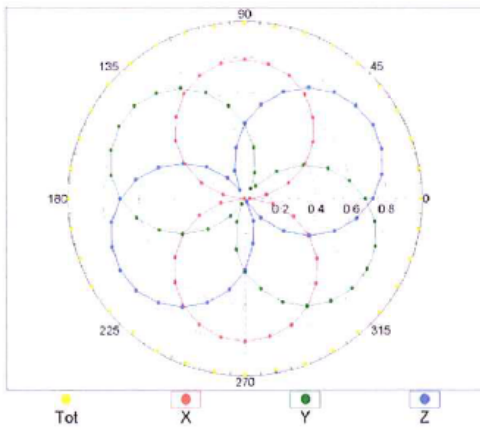
### Frequency Response of E-Field (TEM-Cell:ifi110 EXX, Waveguide: R22)



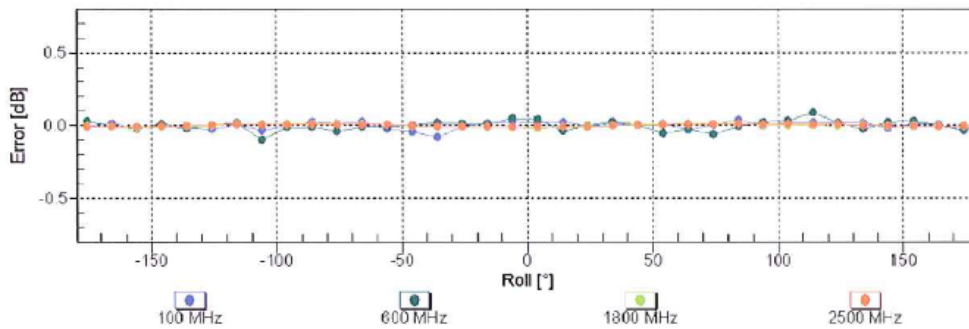
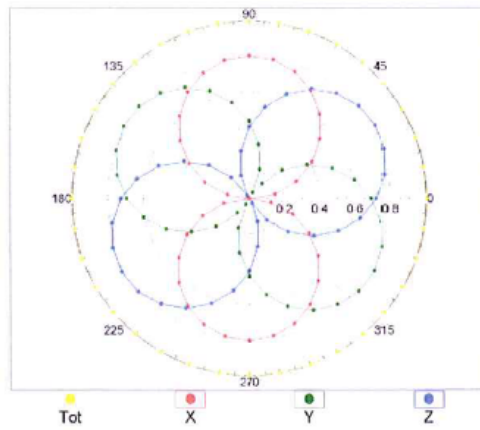
Uncertainty of Frequency Response of E-field:  $\pm 6.3\%$  (k=2)

### Receiving Pattern ( $\phi$ ), $\theta = 0^\circ$

f=600 MHz, TEM

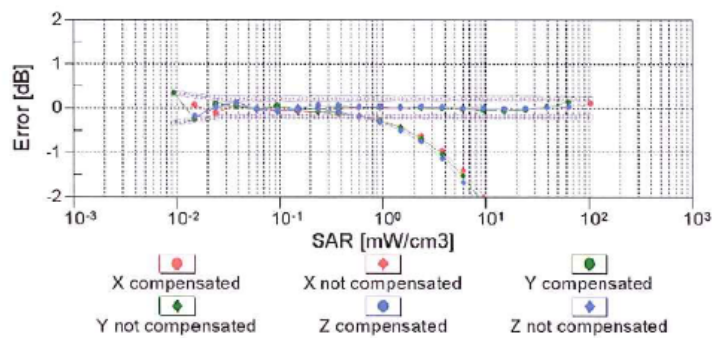
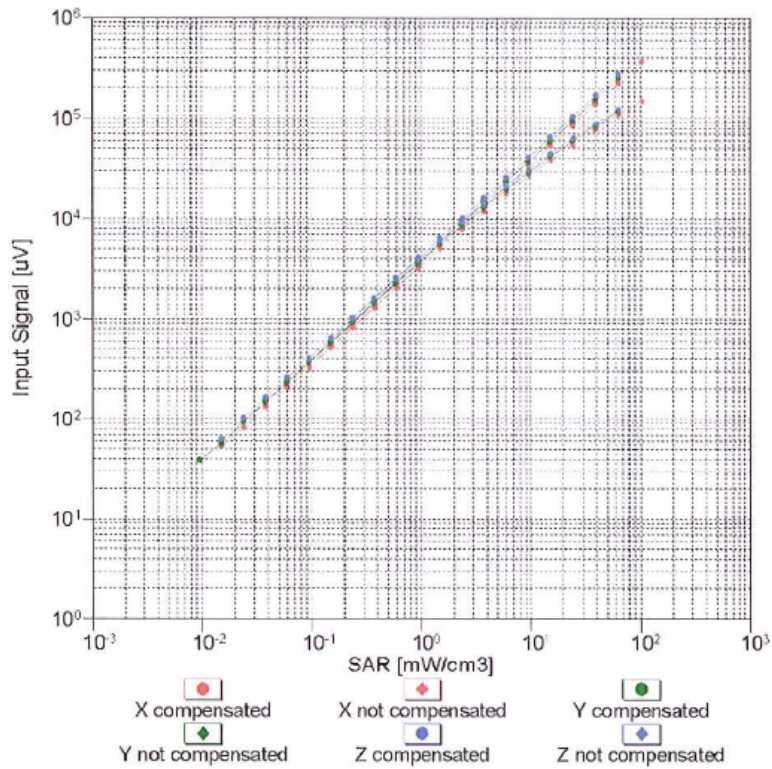


f=1800 MHz, R22



Uncertainty of Axial Isotropy Assessment:  $\pm 0.5\%$  (k=2)

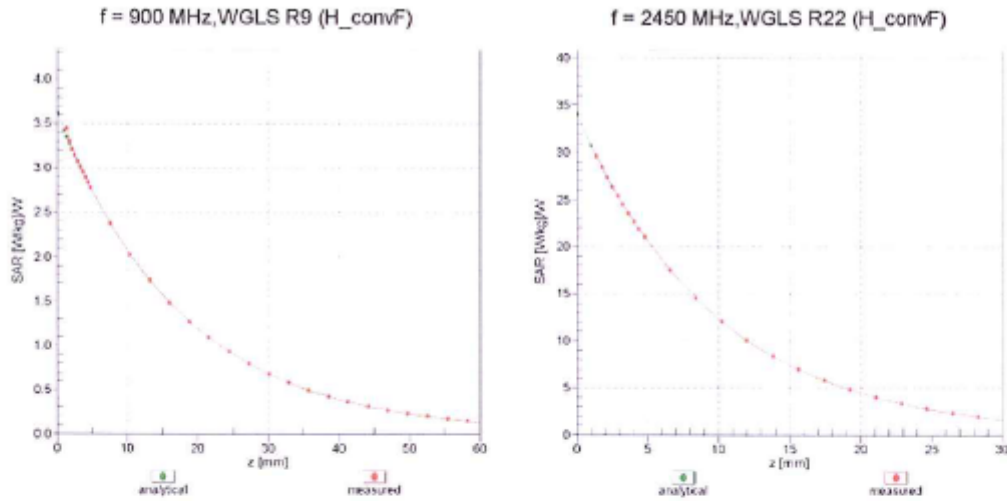
### Dynamic Range $f(\text{SAR}_{\text{head}})$ (TEM cell , $f = 900 \text{ MHz}$ )



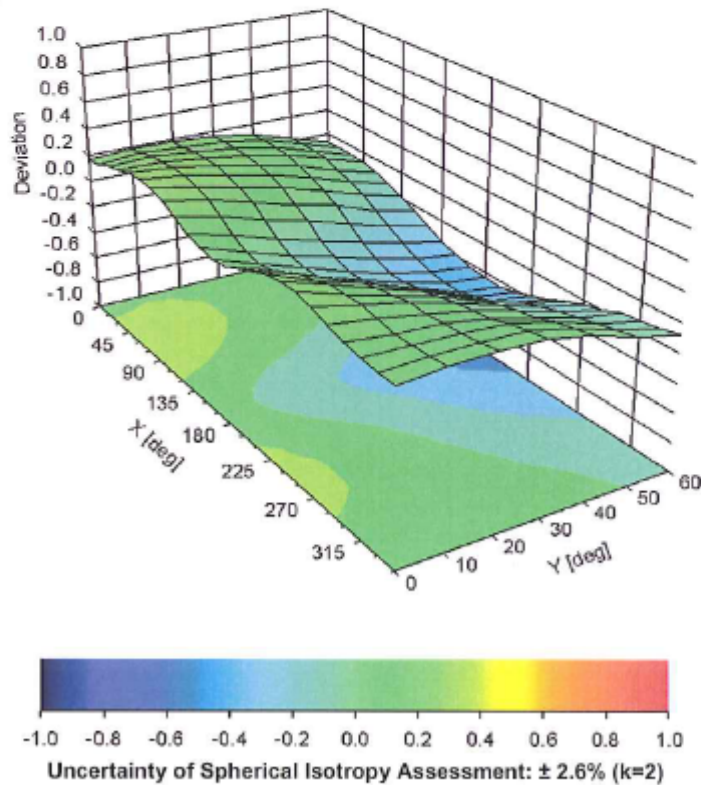
Uncertainty of Linearity Assessment:  $\pm 0.6\%$  ( $k=2$ )



## Conversion Factor Assessment



## Deviation from Isotropy in Liquid Error ( $\phi, \theta$ ), f = 900 MHz



## DASY/EASY - Parameters of Probe: EX3DV4 - SN:3825

### Other Probe Parameters

Sensor Arrangement	Triangular
Connector Angle (°)	Not applicable
Mechanical Surface Detection Mode	enabled
Optical Surface Detection Mode	disabled
Probe Overall Length	337 mm
Probe Body Diameter	10 mm
Tip Length	9 mm
Tip Diameter	2.5 mm
Probe Tip to Sensor X Calibration Point	1 mm
Probe Tip to Sensor Y Calibration Point	1 mm
Probe Tip to Sensor Z Calibration Point	1 mm
Recommended Measurement Distance from Surface	2 mm