

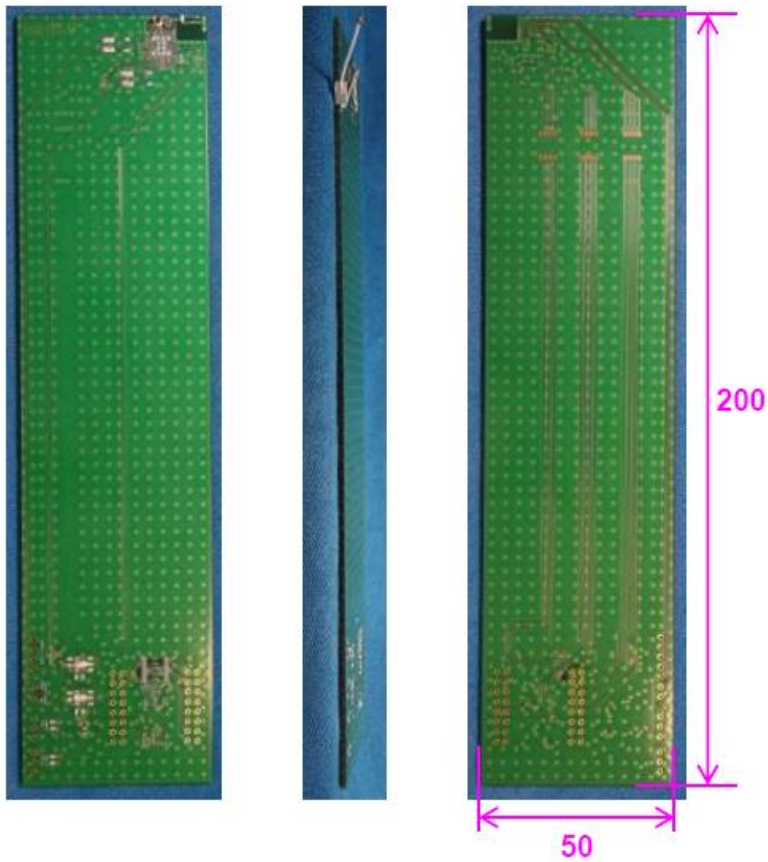


Module: LBEE5HY1MW

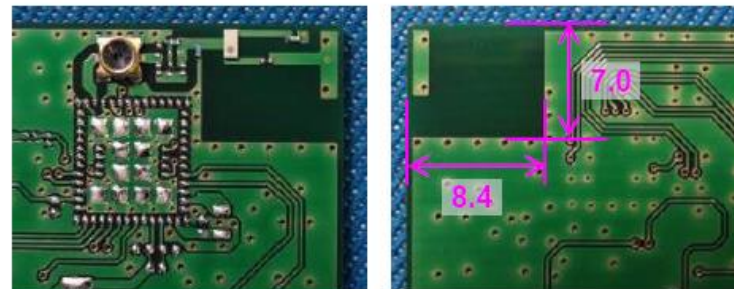
- Antenna model number : ANT162442DT
- Antenna type : Monopole antenna (Chip + pattern)
- Max antenna gain : +2.1 dBi @2442MHz  
+3.5 dBi @5150MHz
- Frequency range : 2400-2483.5MHz, 5150-5850MHz

# Appearance

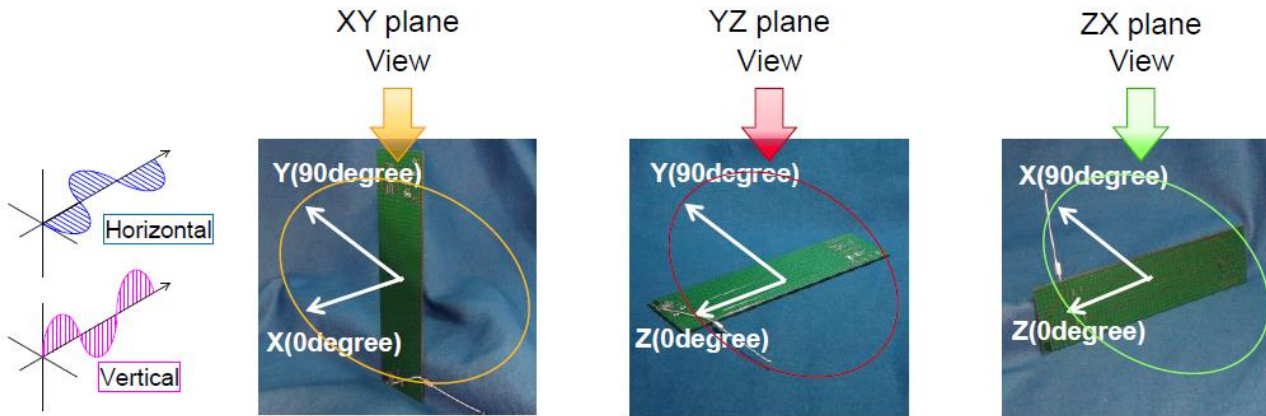
<EVb>



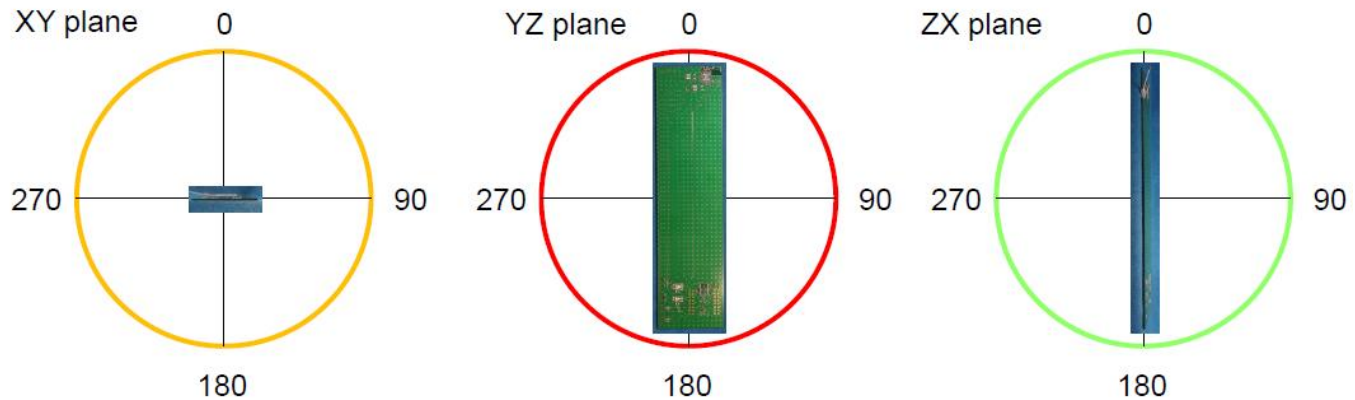
<Antenna area>



# Measurement condition



## 2D Directional indication



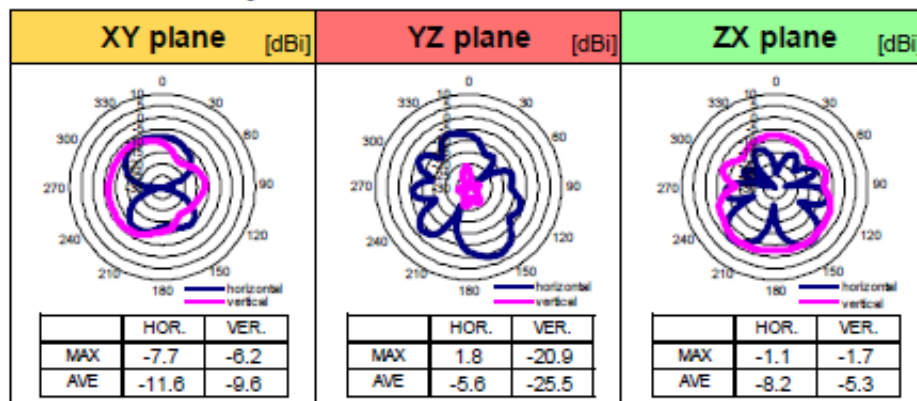
## <Efficiency>

\*Red color shows peak gain  
[dBi] [dB]

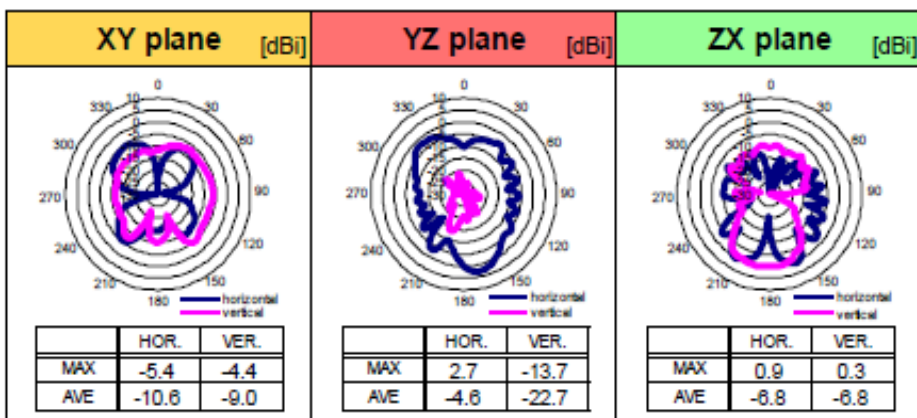
LINEAR POLAMIZATION		XY-plane		YZ-plane		ZX-plane		Total Efficiency
		hor.	ver.	hor.	ver.	hor.	ver.	
2400 MHz	MAX.	-8.0	-5.8	1.3	-21.1	-2.1	-2.3	-5.4
	AVE.	-11.9	-9.6	-6.2	-26.1	-8.9	-5.7	
2442 MHz	MAX.	-7.7	-6.2	1.8	-20.9	-1.1	-1.7	-4.8
	AVE.	-11.6	-9.6	-5.6	-25.5	-8.2	-5.3	
2484 MHz	MAX.	-7.5	-6.6	2.1	-19.8	-0.6	-1.3	-4.5
	AVE.	-11.5	-9.7	-5.3	-24.3	-7.6	-5.0	

LINEAR POLAMIZATION		XY-plane		YZ-plane		ZX-plane		Total Efficiency
		hor.	ver.	hor.	ver.	hor.	ver.	
5150 MHz	MAX.	-7.5	-3.1	3.5	-14.6	0.5	0.0	-4.7
	AVE.	-13.0	-7.4	-4.4	-22.2	-6.5	-6.6	
5500 MHz	MAX.	-5.4	-4.4	2.7	-13.7	0.9	0.3	-4.7
	AVE.	-10.6	-9.0	-4.6	-22.7	-6.8	-6.8	
5850 MHz	MAX.	-7.2	-8.8	1.2	-15.3	0.3	-1.1	-5.5
	AVE.	-12.7	-11.9	-5.3	-23.9	-7.3	-7.7	

## <Directivity>



## <Directivity>



\* Typical (2442MHz) waveform data