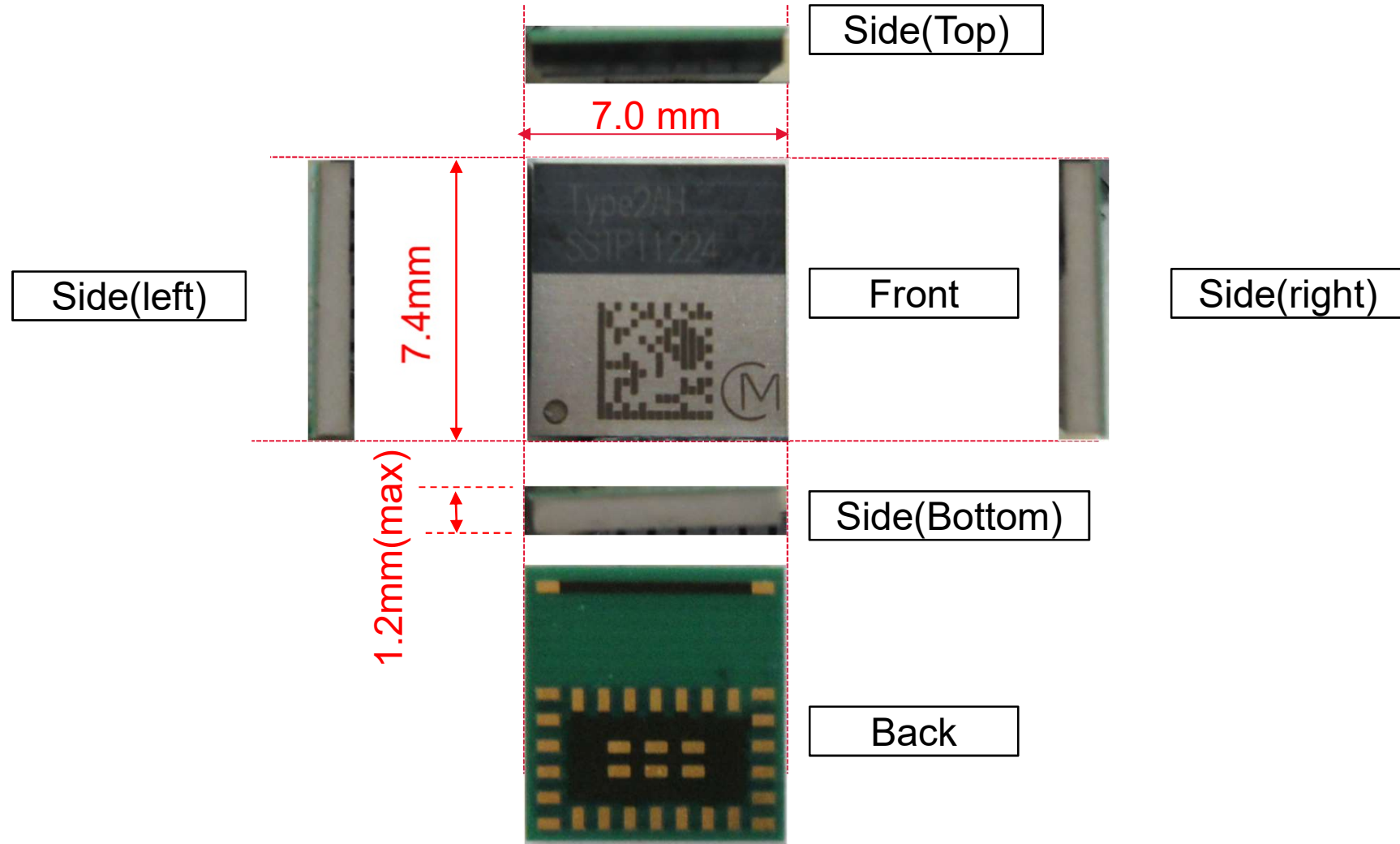


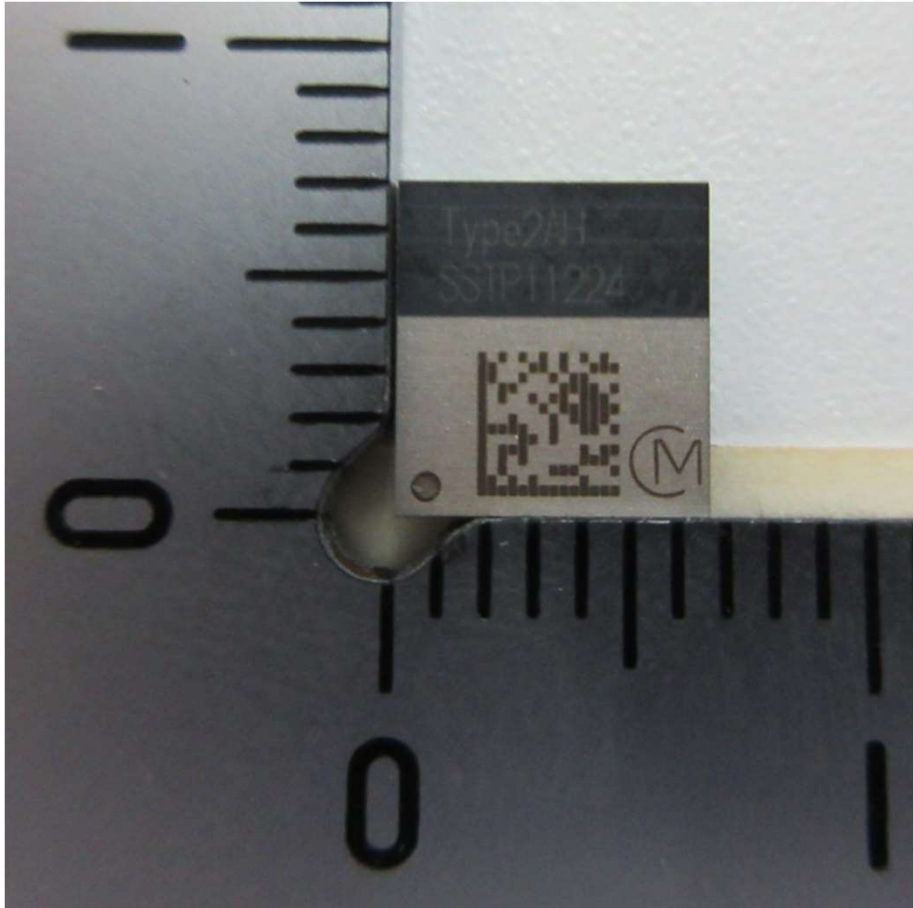


6D photo



Surface mount type : 7.4 x 7.0 mm (Typical), H = 1.2 mm (Max)

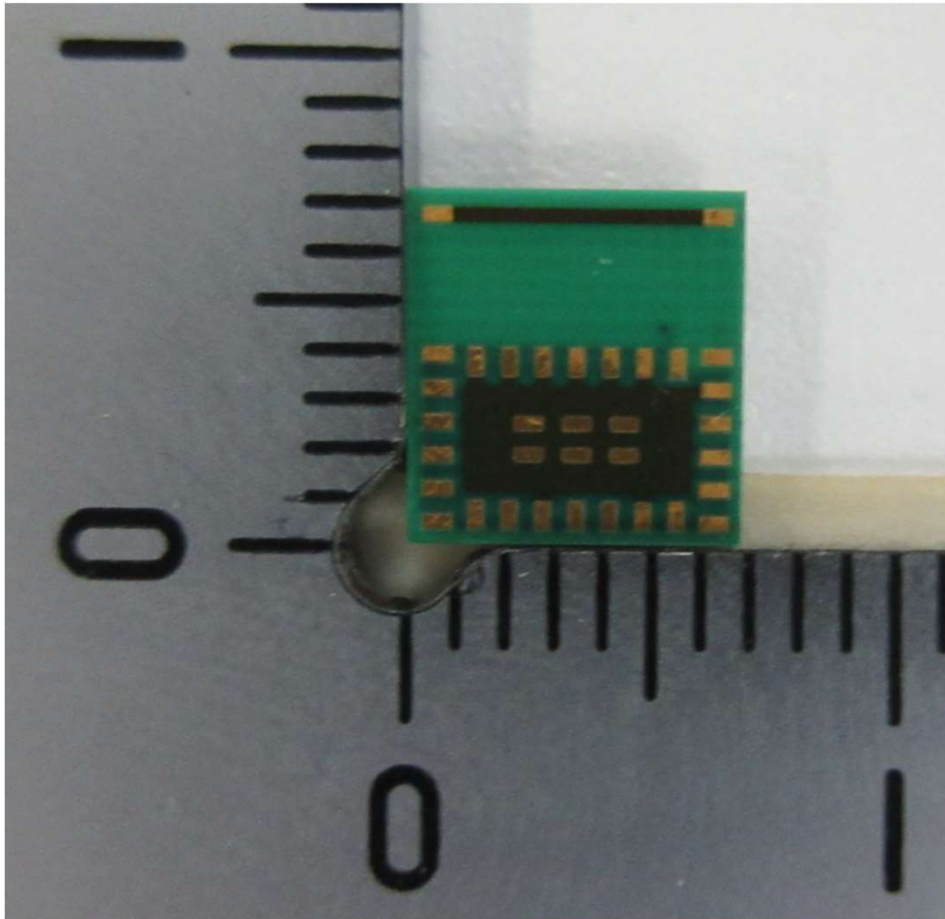
External photo



Please refer to the Label figure for the contents of the label notation.

Module(Front)

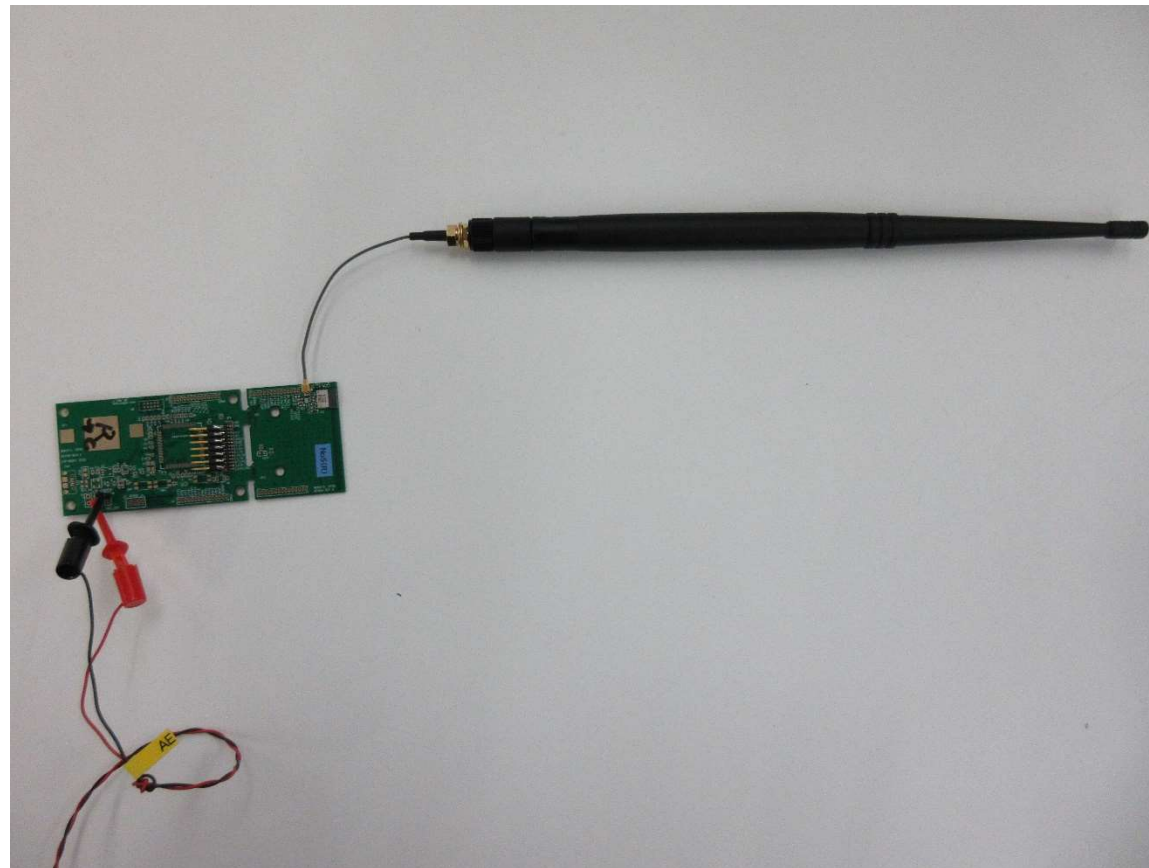
External photo



Module(Back)

Antenna connection diagram

Antenna 1 : S171AH-2450S



Antenna connection diagram

Antenna 2 : AIR-ANT2460P-R

