

APPENDIX 3: Photographs of test setup

Conducted Emission
Internal Antenna



Photo 1



Photo 2

UL Japan, Inc.

Ise EMC Lab.

4383-326 Asama-cho, Ise-shi, Mie-ken 516-0021 JAPAN

Telephone : +81 596 24 8999

Facsimile : +81 596 24 8124

Conducted Emission
External Antenna (S171AH-2450S)



Photo 1

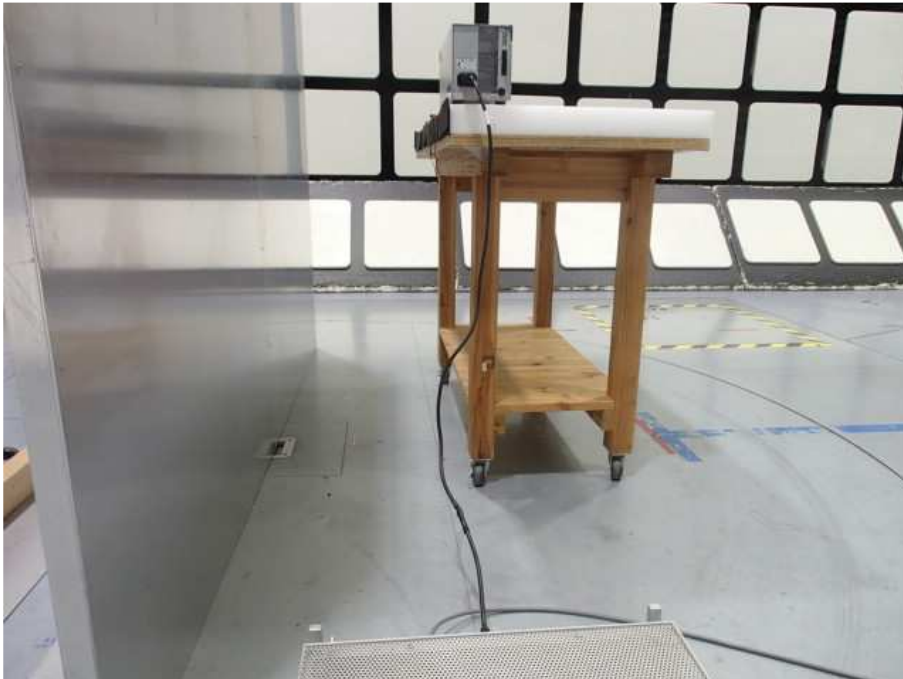


Photo 2

UL Japan, Inc.

Ise EMC Lab.

4383-326 Asama-cho, Ise-shi, Mie-ken 516-0021 JAPAN

Telephone : +81 596 24 8999

Facsimile : +81 596 24 8124

Conducted Emission
External Antenna (AIR-ANT2460P-R)

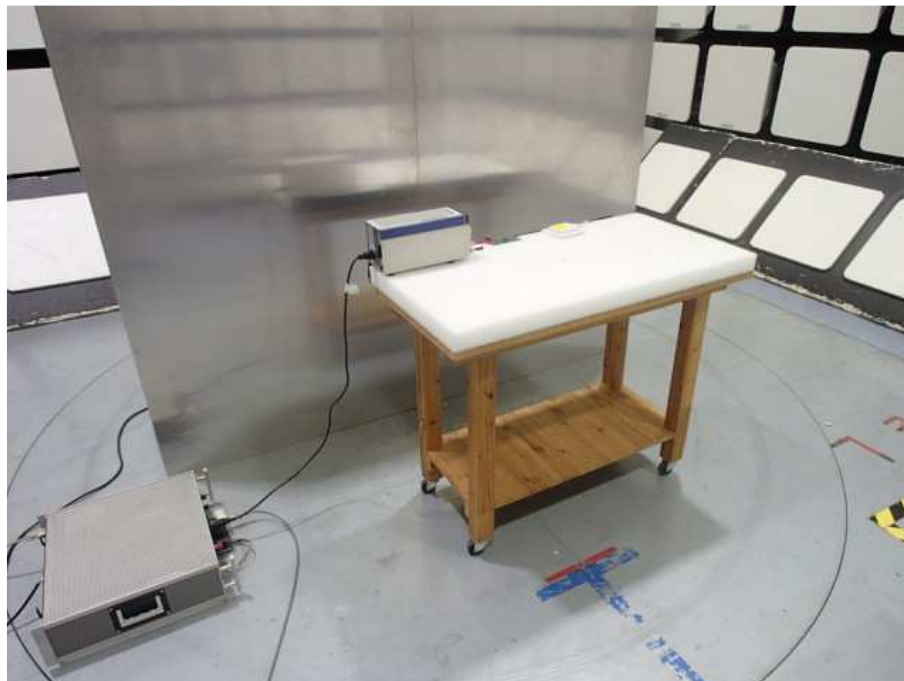


Photo 1



Photo 2

Radiated Spurious Emission
Internal Antenna

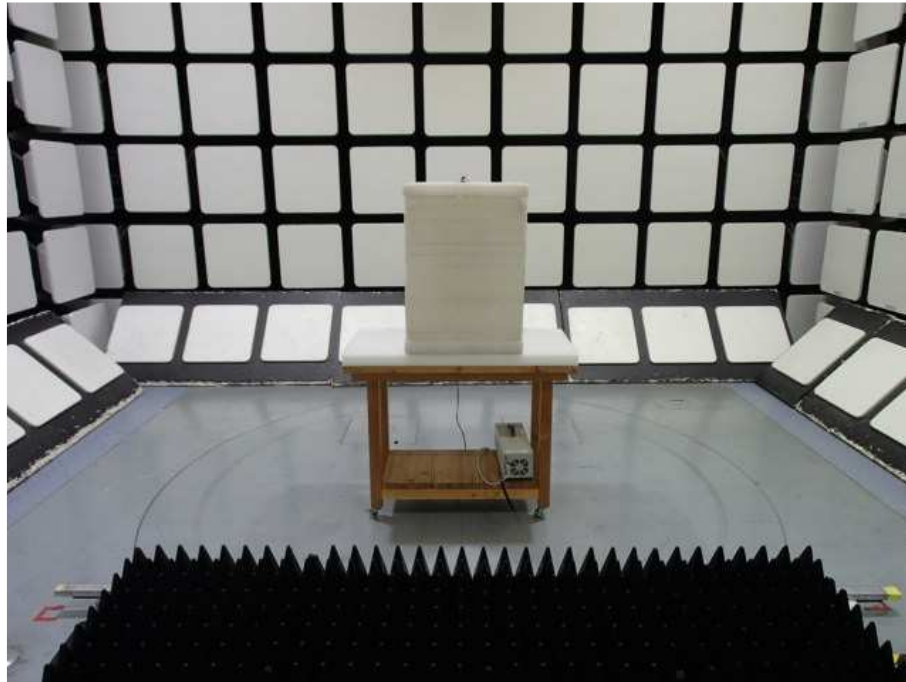


Photo 1



Photo 2

Radiated Spurious Emission
External Antenna (S171AH-2450S)



Photo 1

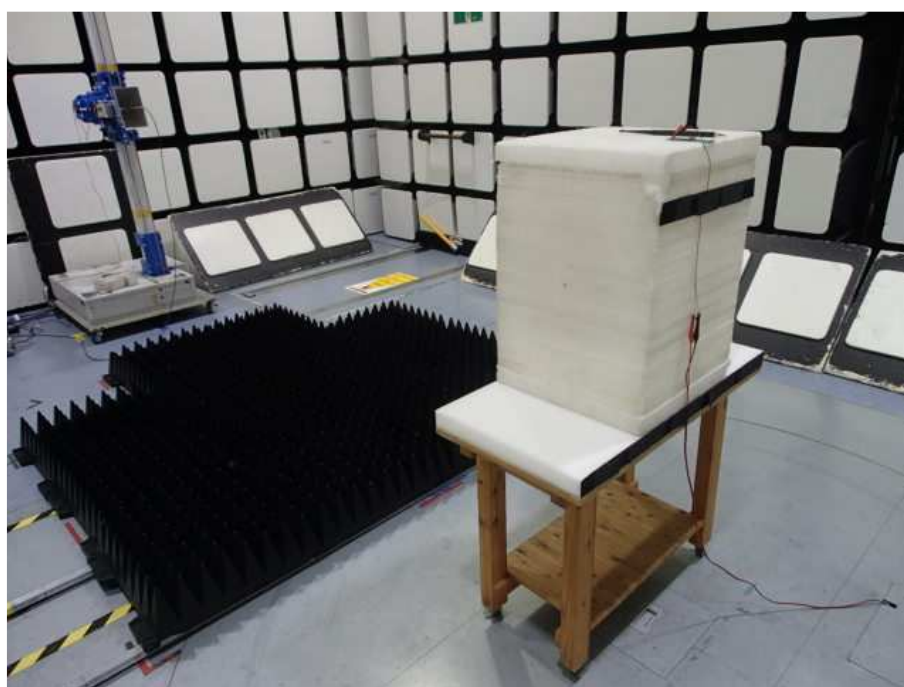


Photo 2

Radiated Spurious Emission
External Antenna (AIR-ANT2460P-R)



Photo 1

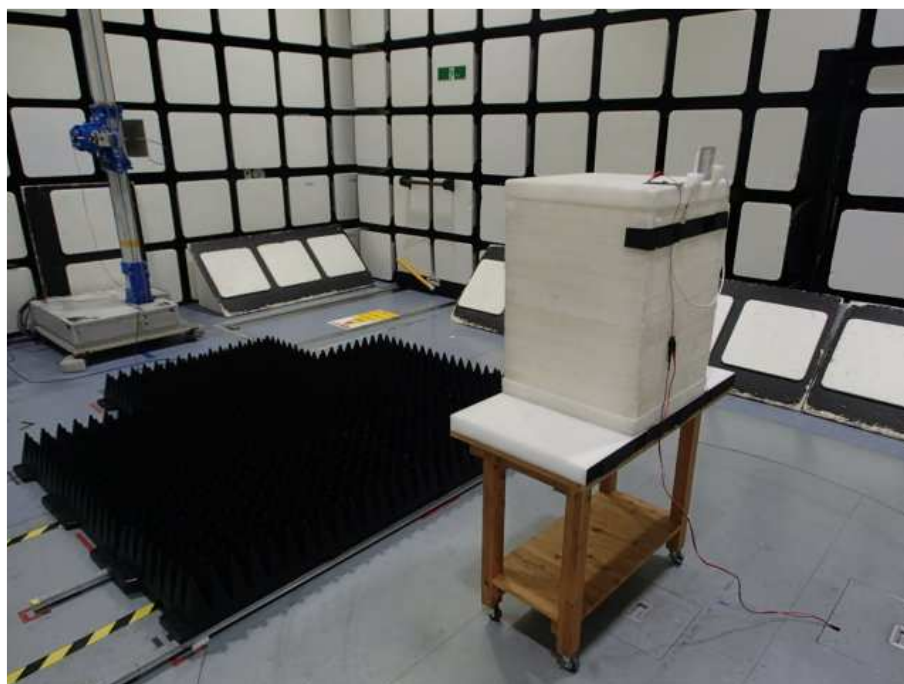


Photo 2

Worst Case Position
Internal Antenna

Range	Polarity: Hori	Polarity: Vert
30 MHz - 1000 MHz	X-axis	X-axis
Around carrier	X-axis	Z-axis
1 GHz - 10 GHz	X-axis	Y-axis
Above 10 GHz	X-axis	X-axis

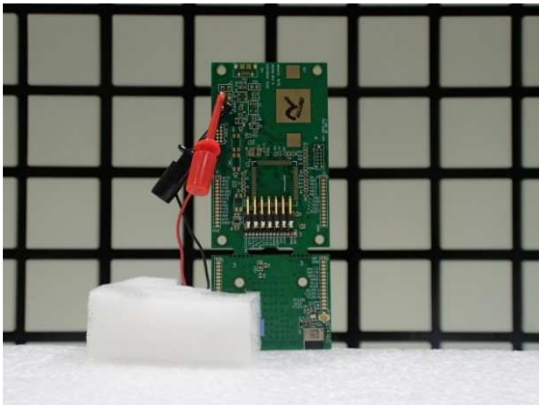
X-axis



Z-axis



Y-axis



Worst Case Position
External Antenna (S171AH-2450S)

Range	Module	
	Polarity: Hori	Polarity: Vert
30 MHz - 1000 MHz	X-axis	X-axis
Around carrier	X-axis	Z-axis
1 GHz - 10 GHz	X-axis	Z-axis
Above 10 GHz	X-axis	X-axis

X-axis



Z-axis



Y-axis



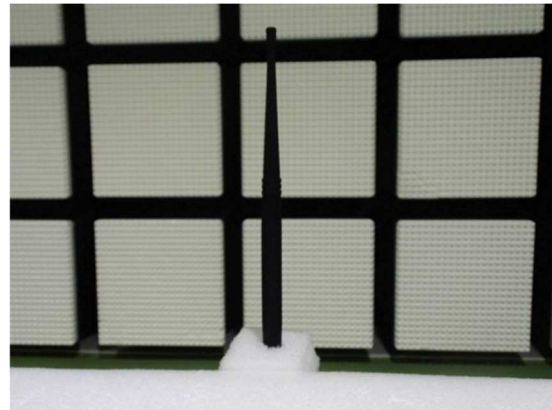
Worst Case Position
External Antenna (S171AH-2450S)

Range	Antenna Polarity: Hori	Antenna Polarity: Vert
30 MHz - 1000 MHz	X-axis	X-axis
Around carrier	X-axis	X-axis 90°
1 GHz - 10 GHz	X-axis	X-axis
Above 10 GHz	X-axis	X-axis

X-axis



Y-axis



X-axis 45°



Z-axis 45°



X-axis 90°



Z-axis 90°



Worst Case Position
External Antenna (AIR-ANT2460P-R)

Range	Module	
	Polarity: Hori	Polarity: Vert
30 MHz - 1000 MHz	X-axis	X-axis
Around carrier	X-axis	X-axis
1 GHz - 10 GHz	X-axis	Y-axis
Above 10 GHz	X-axis	X-axis

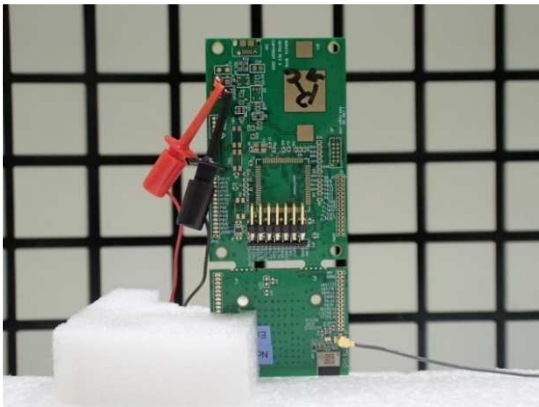
X-axis



Z-axis



Y-axis



Worst Case Position
External Antenna (AIR-ANT2460P-R)

Range	Antenna	
	Polarity: Hori	Polarity: Vert
30 MHz - 1000 MHz	X-axis	X-axis
Around carrier	Z-axis	Y-axis
1 GHz - 10 GHz	Z-axis	Z-axis
Above 10 GHz	X-axis	X-axis

X-axis



Z-axis



Y-axis



Antenna Terminal Conducted Tests

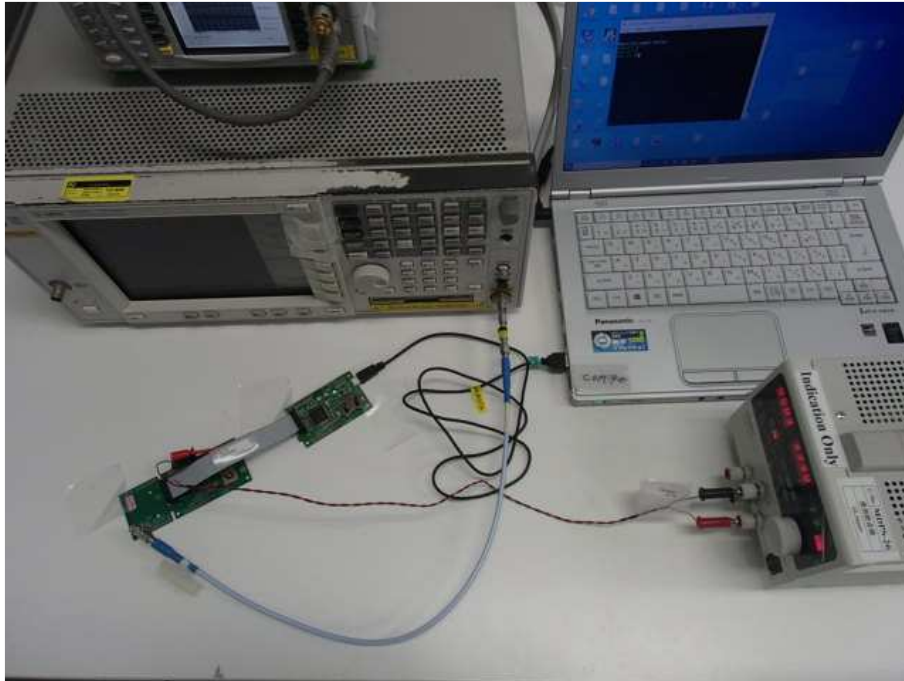


Photo 1

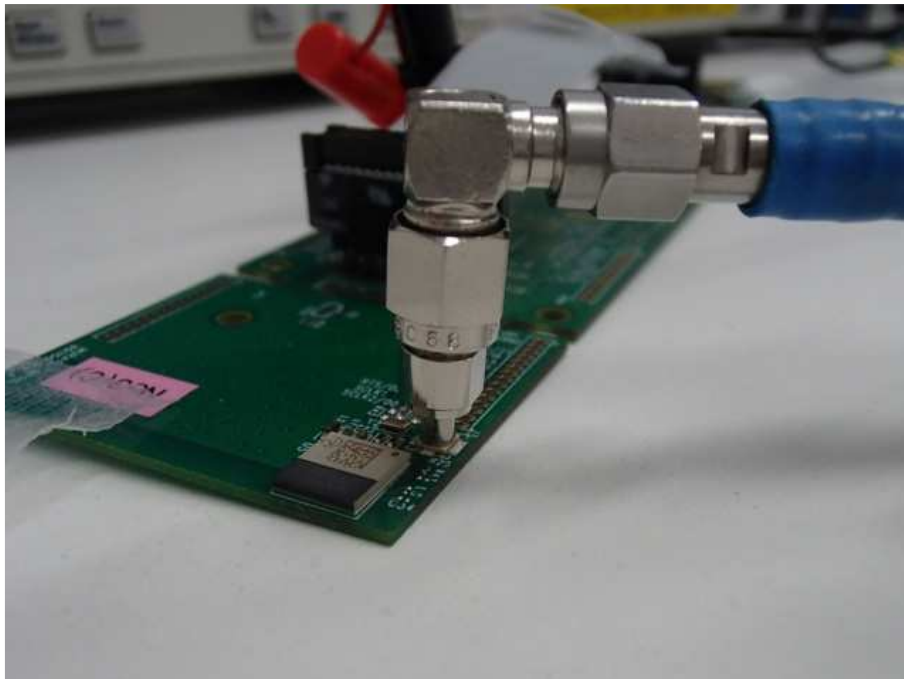


Photo 2

End of Report

UL Japan, Inc.

Ise EMC Lab.

4383-326 Asama-cho, Ise-shi, Mie-ken 516-0021 JAPAN

Telephone : +81 596 24 8999

Facsimile : +81 596 24 8124