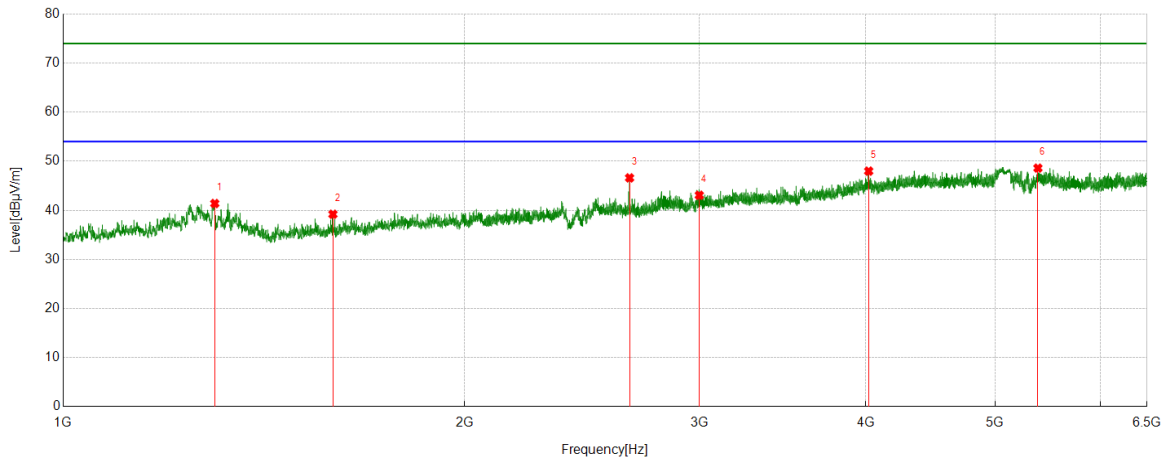




Test Mode	Channel	Polarization	Verdict
11AC80	5210	Vertical	PASS



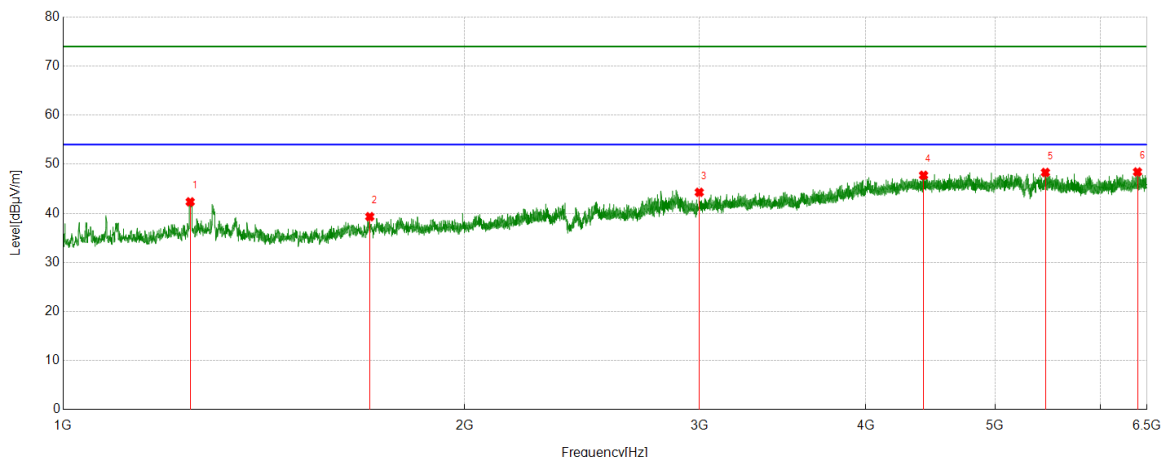
PK Result:

No.	Frequency	Reading Level	Correct Factor	Result	Limit	Margin	Remark
	[MHz]	[dBuV/m]	[dB]	[dBuV/m]	[dBuV/m]	[dB]	
1	1299.3832	47.22	-5.83	41.39	74.00	-32.61	Vertical
2	1593.4322	44.22	-5.02	39.20	74.00	-34.80	Vertical
3	2659.6099	47.28	-0.67	46.61	74.00	-27.39	Vertical
4	3000	41.15	1.92	43.07	74.00	-30.93	Vertical
5	4019.391	41.50	6.49	47.99	74.00	-26.01	Vertical
6	5383.7649	40.88	7.72	48.60	74.00	-25.40	Vertical

- Remark: 1. Measurement = Reading Level + Correct Factor.  
 2. If Peak Result complies with AV limit, AV Result is deemed to comply with AV limit.  
 3. Test setup: RBW: 1 MHz, VBW: 3 MHz, Sweep time: auto.  
 4. Peak: Peak detector.  
 5. AVG: VBW refer to section 6.2.  
 6. For below 6.5GHz part, filter losses were only considered in the spurious frequency bands and the authorized band were not corrected for Band Reject Filter losses.  
 The proper operation of the transmitter prior to adding the filter to the measurement chain.  
 7. Only the worst case emission was recorded, if it complies with the limit, the other emissions deemed to comply with the limit.



Test Mode	Channel	Polarization	Verdict
11AC80	5290	Horizontal	PASS



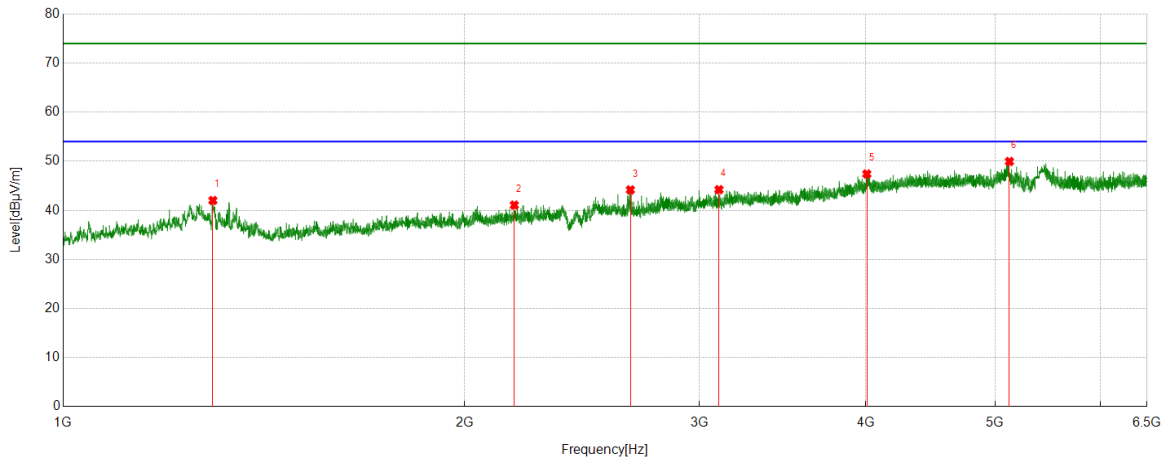
PK Result:

No.	Frequency	Reading Level	Correct Factor	Result	Limit	Margin	Remark
	[MHz]	[dBuV/m]	[dB]	[dBuV/m]	[dBuV/m]	[dB]	
1	1245.3742	47.96	-5.62	42.34	74.00	-31.66	Horizontal
2	1698.1164	44.11	-4.79	39.32	74.00	-34.68	Horizontal
3	3000	42.36	1.92	44.28	74.00	-29.72	Horizontal
4	4418.8243	40.72	7.03	47.75	74.00	-26.25	Horizontal
5	5453.7726	40.37	7.96	48.33	74.00	-25.67	Horizontal
6	6393.8215	39.44	8.99	48.43	74.00	-25.57	Horizontal

- Remark: 1. Measurement = Reading Level + Correct Factor.  
 2. If Peak Result complies with AV limit, AV Result is deemed to comply with AV limit.  
 3. Test setup: RBW: 1 MHz, VBW: 3 MHz, Sweep time: auto.  
 4. Peak: Peak detector.  
 5. AVG: VBW refer to section 6.2.  
 6. For below 6.5GHz part, filter losses were only considered in the spurious frequency bands and the authorized band were not corrected for Band Reject Filter losses.  
 The proper operation of the transmitter prior to adding the filter to the measurement chain.  
 7. Only the worst case emission was recorded, if it complies with the limit, the other emissions deemed to comply with the limit.



Test Mode	Channel	Polarization	Verdict
11AC80	5290	Vertical	PASS



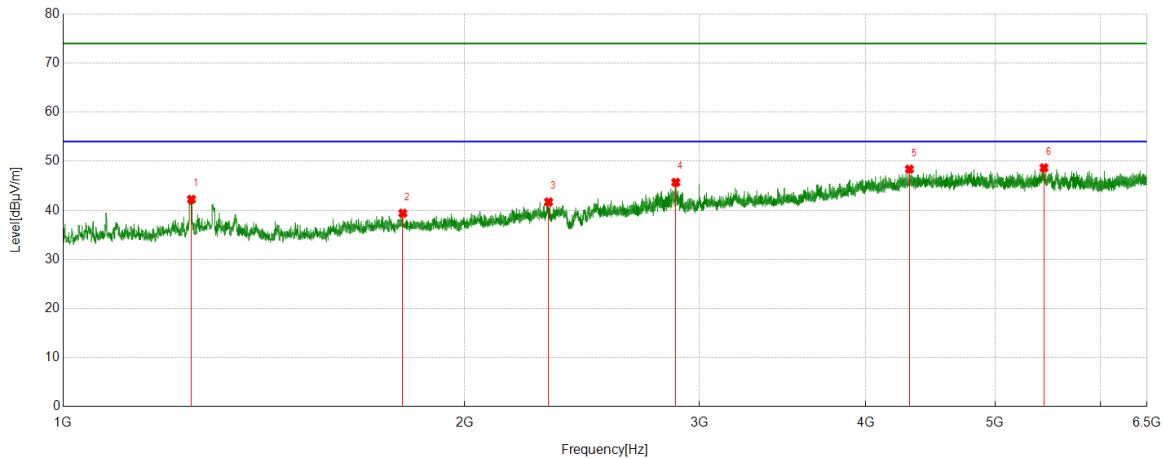
PK Result:

No.	Frequency	Reading Level	Correct Factor	Result	Limit	Margin	Remark
	[MHz]	[dBuV/m]	[dB]	[dBuV/m]	[dBuV/m]	[dB]	
1	1295.0492	47.80	-5.79	42.01	74.00	-31.99	Vertical
2	2179.5299	43.40	-2.33	41.07	74.00	-32.93	Vertical
3	2663.2772	44.86	-0.69	44.17	74.00	-29.83	Vertical
4	3103.8449	42.04	2.17	44.21	74.00	-29.79	Vertical
5	4006.5563	41.38	6.03	47.41	74.00	-26.59	Vertical
6	5125.125	41.93	8.02	49.95	74.00	-24.05	Vertical

- Remark: 1. Measurement = Reading Level + Correct Factor.  
 2. If Peak Result complies with AV limit, AV Result is deemed to comply with AV limit.  
 3. Test setup: RBW: 1 MHz, VBW: 3 MHz, Sweep time: auto.  
 4. Peak: Peak detector.  
 5. AVG: VBW refer to section 6.2.  
 6. For below 6.5GHz part, filter losses were only considered in the spurious frequency bands and the authorized band were not corrected for Band Reject Filter losses.  
 The proper operation of the transmitter prior to adding the filter to the measurement chain.  
 7. Only the worst case emission was recorded, if it complies with the limit, the other emissions deemed to comply with the limit.



Test Mode	Channel	Polarization	Verdict
11AC80	5530	Horizontal	PASS



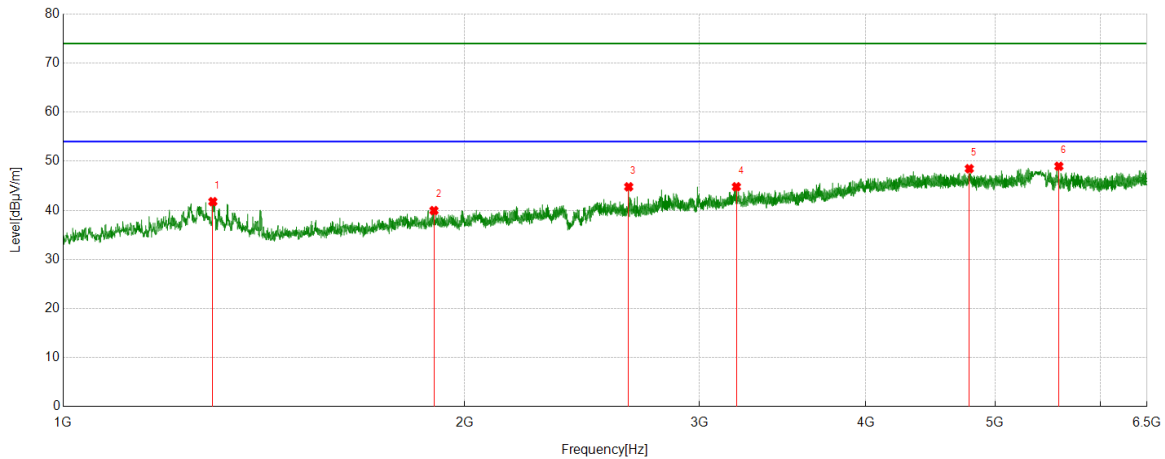
PK Result:

No.	Frequency	Reading Level	Correct Factor	Result	Limit	Margin	Remark
	[MHz]	[dBuV/m]	[dB]	[dBuV/m]	[dBuV/m]	[dB]	
1	1248.0413	47.88	-5.64	42.24	74.00	-31.76	Horizontal
2	1797.7996	43.23	-3.82	39.41	74.00	-34.59	Horizontal
3	2312.5521	43.36	-1.65	41.71	74.00	-32.29	Horizontal
4	2880.3134	45.40	0.30	45.70	74.00	-28.30	Horizontal
5	4312.2569	41.62	6.77	48.39	74.00	-25.61	Horizontal
6	5440.16	40.10	8.56	48.66	74.00	-25.34	Horizontal

- Remark: 1. Measurement = Reading Level + Correct Factor.  
 2. If Peak Result complies with AV limit, AV Result is deemed to comply with AV limit.  
 3. Test setup: RBW: 1 MHz, VBW: 3 MHz, Sweep time: auto.  
 4. Peak: Peak detector.  
 5. AVG: VBW refer to section 6.2.  
 6. For below 6.5GHz part, filter losses were only considered in the spurious frequency bands and the authorized band were not corrected for Band Reject Filter losses.  
 The proper operation of the transmitter prior to adding the filter to the measurement chain.  
 7. Only the worst case emission was recorded, if it complies with the limit, the other emissions deemed to comply with the limit.



Test Mode	Channel	Polarization	Verdict
11AC80	5530	Vertical	PASS



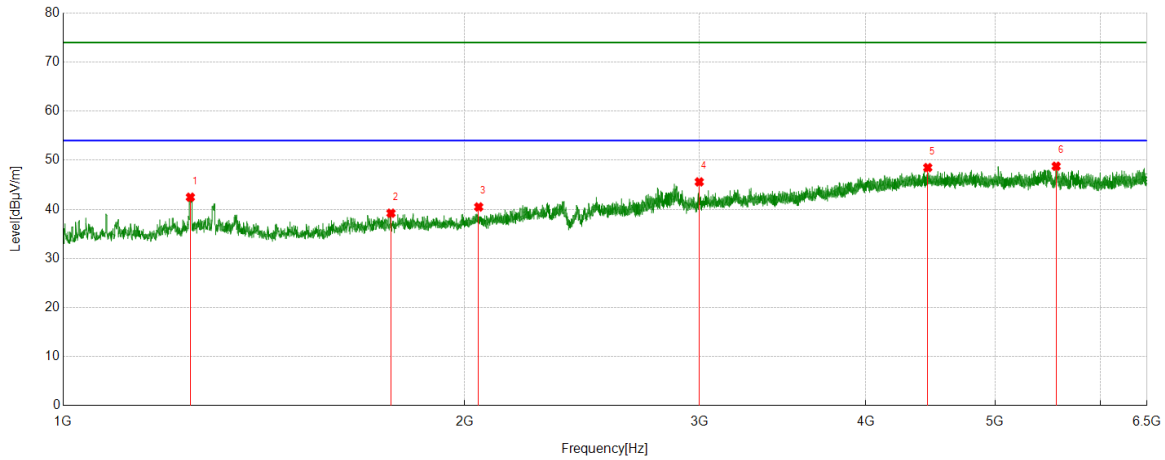
PK Result:

No.	Frequency	Reading Level	Correct Factor	Result	Limit	Margin	Remark
	[MHz]	[dBuV/m]	[dB]	[dBuV/m]	[dBuV/m]	[dB]	
1	1295.0492	47.56	-5.79	41.77	74.00	-32.23	Vertical
2	1897.1495	43.31	-3.36	39.95	74.00	-34.05	Vertical
3	2655.6093	45.51	-0.72	44.79	74.00	-29.21	Vertical
4	3198.3554	41.83	2.97	44.80	74.00	-29.20	Vertical
5	4782.0869	40.89	7.59	48.48	74.00	-25.52	Vertical
6	5582.1202	40.65	8.32	48.97	74.00	-25.03	Vertical

- Remark: 1. Measurement = Reading Level + Correct Factor.  
 2. If Peak Result complies with AV limit, AV Result is deemed to comply with AV limit.  
 3. Test setup: RBW: 1 MHz, VBW: 3 MHz, Sweep time: auto.  
 4. Peak: Peak detector.  
 5. AVG: VBW refer to section 6.2.  
 6. For below 6.5GHz part, filter losses were only considered in the spurious frequency bands and the authorized band were not corrected for Band Reject Filter losses.  
 The proper operation of the transmitter prior to adding the filter to the measurement chain.  
 7. Only the worst case emission was recorded, if it complies with the limit, the other emissions deemed to comply with the limit.



Test Mode	Channel	Polarization	Verdict
11AC80	5610	Horizontal	PASS



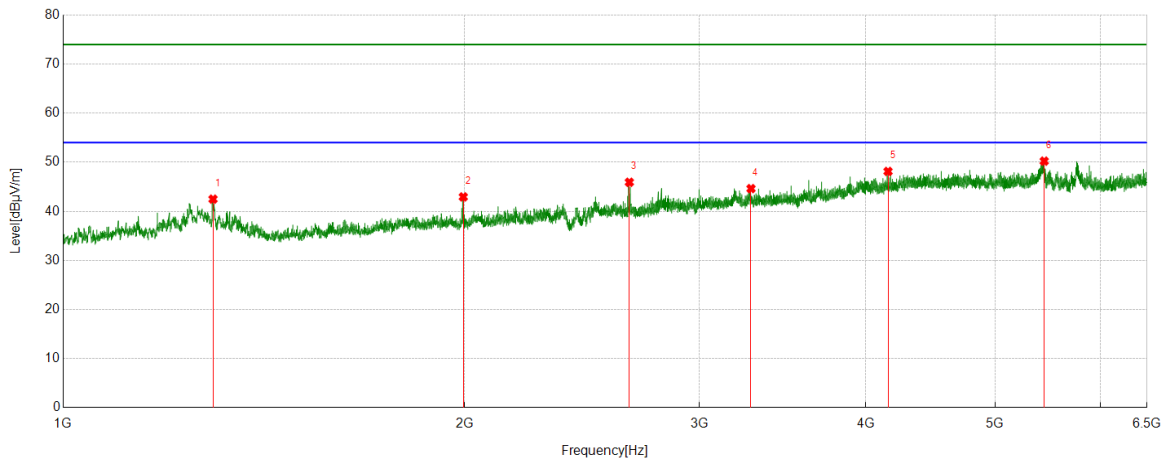
PK Result:

No.	Frequency	Reading Level	Correct Factor	Result	Limit	Margin	Remark
	[MHz]	[dBuV/m]	[dB]	[dBuV/m]	[dBuV/m]	[dB]	
1	1245.7076	48.09	-5.62	42.47	74.00	-31.53	Horizontal
2	1761.4602	43.30	-4.09	39.21	74.00	-34.79	Horizontal
3	2049.5083	42.86	-2.38	40.48	74.00	-33.52	Horizontal
4	3000	44.80	0.79	45.59	74.00	-28.41	Horizontal
5	4451.1057	41.22	7.28	48.50	74.00	-25.50	Horizontal
6	5556.0618	40.39	8.39	48.78	74.00	-25.22	Horizontal

- Remark: 1. Measurement = Reading Level + Correct Factor.  
 2. If Peak Result complies with AV limit, AV Result is deemed to comply with AV limit.  
 3. Test setup: RBW: 1 MHz, VBW: 3 MHz, Sweep time: auto.  
 4. Peak: Peak detector.  
 5. AVG: VBW refer to section 6.2.  
 6. For below 6.5GHz part, filter losses were only considered in the spurious frequency bands and the authorized band were not corrected for Band Reject Filter losses.  
 The proper operation of the transmitter prior to adding the filter to the measurement chain.  
 7. Only the worst case emission was recorded, if it complies with the limit, the other emissions deemed to comply with the limit.



Test Mode	Channel	Polarization	Verdict
11AC80	5610	Vertical	PASS



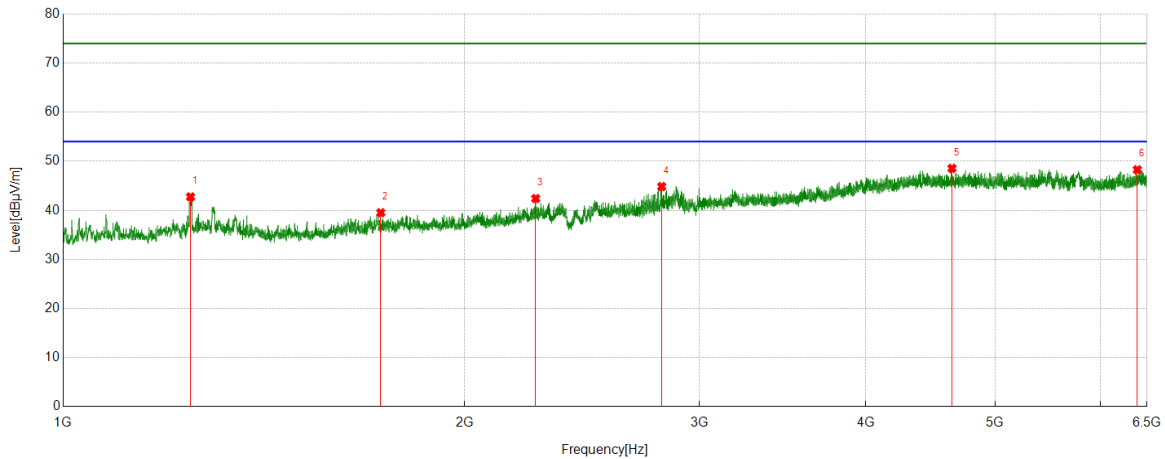
PK Result:

No.	Frequency	Reading Level	Correct Factor	Result	Limit	Margin	Remark
	[MHz]	[dBuV/m]	[dB]	[dBuV/m]	[dBuV/m]	[dB]	
1	1295.3826	48.27	-5.79	42.48	74.00	-31.52	Vertical
2	1995.8326	45.97	-3.03	42.94	74.00	-31.06	Vertical
3	2658.6098	46.61	-0.69	45.92	74.00	-28.08	Vertical
4	3280.0311	41.49	3.14	44.63	74.00	-29.37	Vertical
5	4155.9062	41.42	6.71	48.13	74.00	-25.87	Vertical
6	5442.4936	41.68	8.55	50.23	74.00	-23.77	Vertical

- Remark: 1. Measurement = Reading Level + Correct Factor.  
 2. If Peak Result complies with AV limit, AV Result is deemed to comply with AV limit.  
 3. Test setup: RBW: 1 MHz, VBW: 3 MHz, Sweep time: auto.  
 4. Peak: Peak detector.  
 5. AVG: VBW refer to section 6.2.  
 6. For below 6.5GHz part, filter losses were only considered in the spurious frequency bands and the authorized band were not corrected for Band Reject Filter losses.  
 The proper operation of the transmitter prior to adding the filter to the measurement chain.  
 7. Only the worst case emission was recorded, if it complies with the limit, the other emissions deemed to comply with the limit.



Test Mode	Channel	Polarization	Verdict
11AC80	5690	Horizontal	PASS



PK Result:

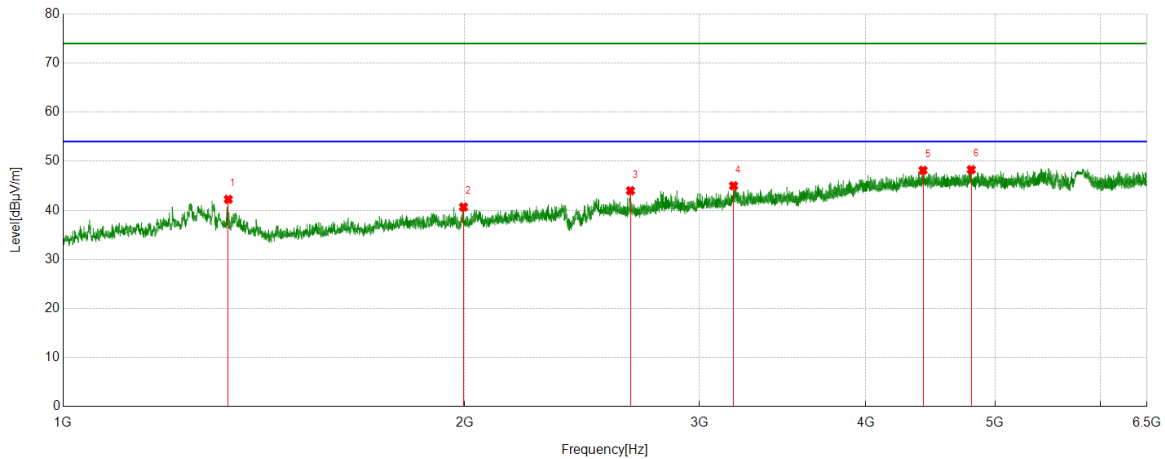
No.	Frequency	Reading Level	Correct Factor	Result	Limit	Margin	Remark
	[MHz]	[dBuV/m]	[dB]	[dBuV/m]	[dBuV/m]	[dB]	
1	1246.041	48.37	-5.63	42.74	74.00	-31.26	Horizontal
2	1730.7885	43.95	-4.44	39.51	74.00	-34.49	Horizontal
3	2261.5436	44.51	-2.11	42.40	74.00	-31.60	Horizontal
4	2811.3019	45.07	-0.23	44.84	74.00	-29.16	Horizontal
5	4641.2935	41.37	7.18	48.55	74.00	-25.45	Horizontal
6	6391.8769	39.21	9.06	48.27	74.00	-25.73	Horizontal

- Remark: 1. Measurement = Reading Level + Correct Factor.  
 2. If Peak Result complies with AV limit, AV Result is deemed to comply with AV limit.  
 3. Test setup: RBW: 1 MHz, VBW: 3 MHz, Sweep time: auto.  
 4. Peak: Peak detector.  
 5. AVG: VBW refer to section 6.2.  
 6. For below 6.5GHz part, filter losses were only considered in the spurious frequency bands and the authorized band were not corrected for Band Reject Filter losses.  
 The proper operation of the transmitter prior to adding the filter to the measurement chain.  
 7. Only the worst case emission was recorded, if it complies with the limit, the other emissions deemed to comply with the limit.





Test Mode	Channel	Polarization	Verdict
11AC80	5690	Vertical	PASS



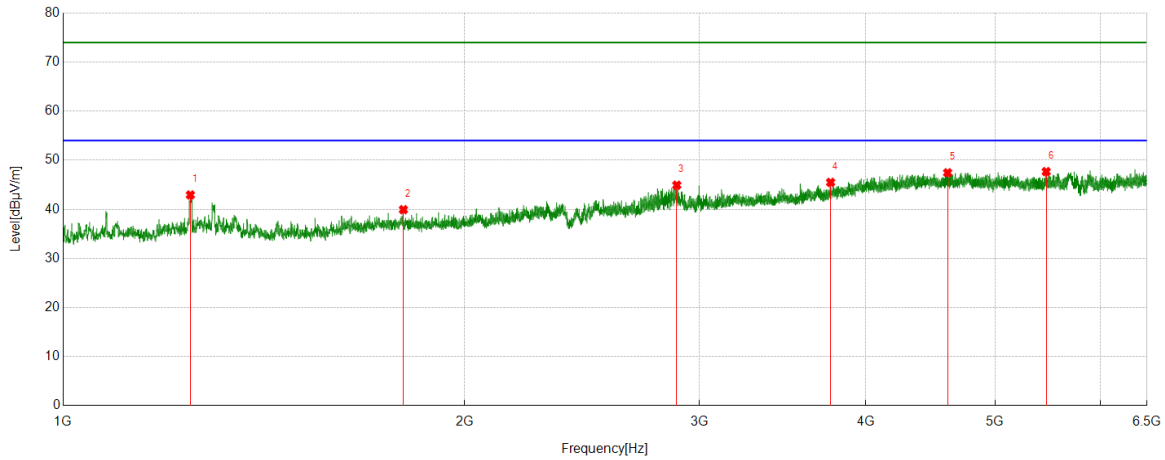
PK Result:

No.	Frequency	Reading Level	Correct Factor	Result	Limit	Margin	Remark
	[MHz]	[dBuV/m]	[dB]	[dBuV/m]	[dBuV/m]	[dB]	
1	1330.055	47.92	-5.68	42.24	74.00	-31.76	Vertical
2	1996.166	43.70	-3.03	40.67	74.00	-33.33	Vertical
3	2663.6106	44.69	-0.69	44.00	74.00	-30.00	Vertical
4	3182.7981	42.07	2.93	45.00	74.00	-29.00	Vertical
5	4414.935	40.96	7.19	48.15	74.00	-25.85	Vertical
6	4798.0331	40.50	7.78	48.28	74.00	-25.72	Vertical

- Remark: 1. Measurement = Reading Level + Correct Factor.  
 2. If Peak Result complies with AV limit, AV Result is deemed to comply with AV limit.  
 3. Test setup: RBW: 1 MHz, VBW: 3 MHz, Sweep time: auto.  
 4. Peak: Peak detector.  
 5. AVG: VBW refer to section 6.2.  
 6. For below 6.5GHz part, filter losses were only considered in the spurious frequency bands and the authorized band were not corrected for Band Reject Filter losses.  
 The proper operation of the transmitter prior to adding the filter to the measurement chain.  
 7. Only the worst case emission was recorded, if it complies with the limit, the other emissions deemed to comply with the limit.



Test Mode	Channel	Polarization	Verdict
11AC80	5775	Horizontal	PASS



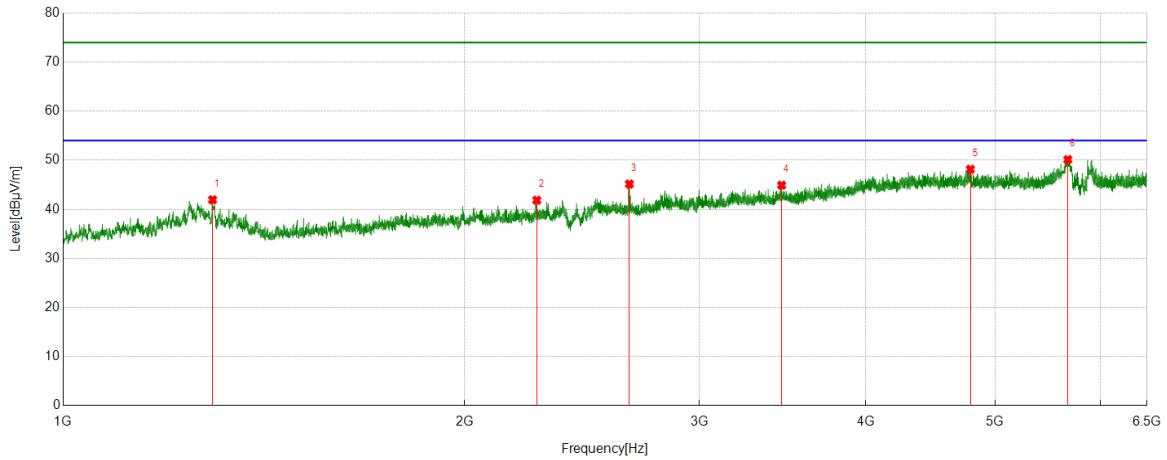
PK Result:

No.	Frequency	Reading Level	Correct Factor	Result	Limit	Margin	Remark
	[MHz]	[dBuV/m]	[dB]	[dBuV/m]	[dBuV/m]	[dB]	
1	1245.7076	48.55	-5.62	42.93	74.00	-31.07	Horizontal
2	1799.8	43.77	-3.84	39.93	74.00	-34.07	Horizontal
3	2885.6476	44.48	0.44	44.92	74.00	-29.08	Horizontal
4	3763.4737	40.88	4.61	45.49	74.00	-28.51	Horizontal
5	4606.2896	40.44	7.01	47.45	74.00	-26.55	Horizontal
6	5461.5513	40.17	7.51	47.68	74.00	-26.32	Horizontal

- Remark: 1. Measurement = Reading Level + Correct Factor.  
 2. If Peak Result complies with AV limit, AV Result is deemed to comply with AV limit.  
 3. Test setup: RBW: 1 MHz, VBW: 3 MHz, Sweep time: auto.  
 4. Peak: Peak detector.  
 5. AVG: VBW refer to section 6.2.  
 6. For below 6.5GHz part, filter losses were only considered in the spurious frequency bands and the authorized band were not corrected for Band Reject Filter losses.  
 The proper operation of the transmitter prior to adding the filter to the measurement chain.  
 7. Only the worst case emission was recorded, if it complies with the limit, the other emissions deemed to comply with the limit.



Test Mode	Channel	Polarization	Verdict
11AC80	5775	Vertical	PASS



PK Result:

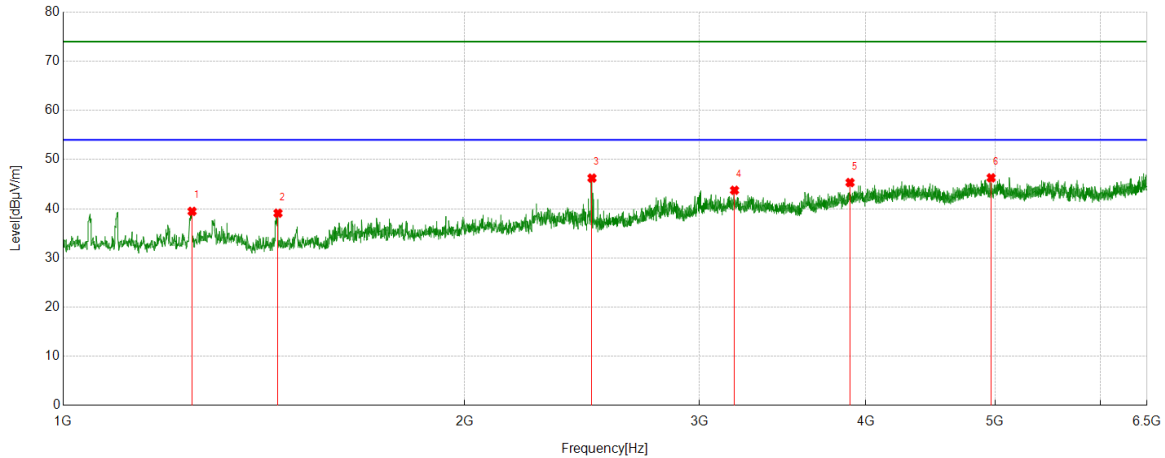
No.	Frequency	Reading Level	Correct Factor	Result	Limit	Margin	Remark
	[MHz]	[dBuV/m]	[dB]	[dBuV/m]	[dBuV/m]	[dB]	
1	1294.3824	47.73	-5.79	41.94	74.00	-32.06	Vertical
2	2265.8776	43.96	-2.11	41.85	74.00	-32.15	Vertical
3	2658.9432	45.83	-0.68	45.15	74.00	-28.85	Vertical
4	3458.551	41.52	3.39	44.91	74.00	-29.09	Vertical
5	4791.0323	40.41	7.75	48.16	74.00	-25.84	Vertical
6	5668.4632	42.30	7.83	50.13	74.00	-23.87	Vertical

- Remark: 1. Measurement = Reading Level + Correct Factor.  
 2. If Peak Result complies with AV limit, AV Result is deemed to comply with AV limit.  
 3. Test setup: RBW: 1 MHz, VBW: 3 MHz, Sweep time: auto.  
 4. Peak: Peak detector.  
 5. AVG: VBW refer to section 6.2.  
 6. For below 6.5GHz part, filter losses were only considered in the spurious frequency bands and the authorized band were not corrected for Band Reject Filter losses.  
 The proper operation of the transmitter prior to adding the filter to the measurement chain.  
 7. Only the worst case emission was recorded, if it complies with the limit, the other emissions deemed to comply with the limit.



**Antenna Type 1: PCB Antenna**

Test Mode	Channel	Polarization	Verdict
11A	5180	Horizontal	PASS



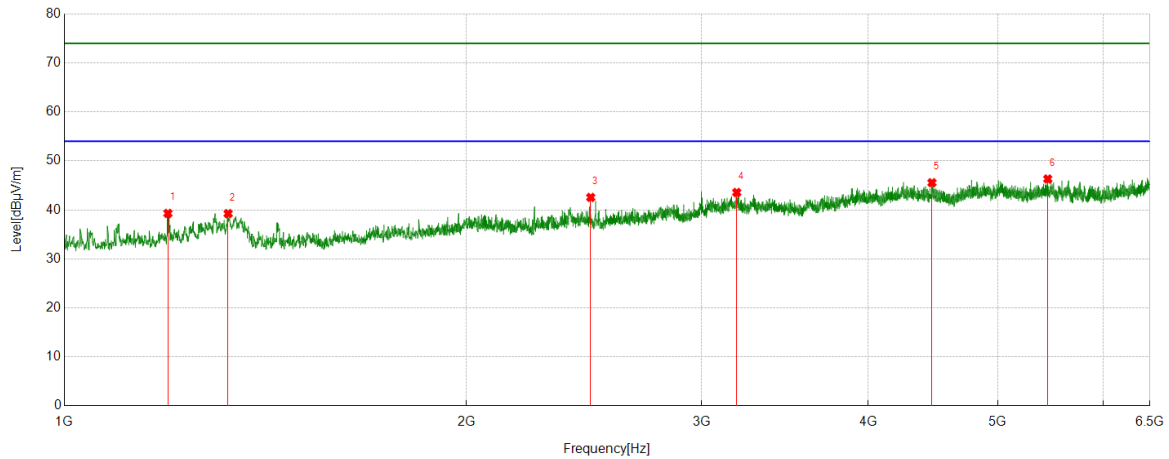
**PK Result:**

No.	Frequency	Reading Level	Correct Factor	Result	Limit	Margin	Remark
	[MHz]	[dBuV/m]	[dB]	[dBuV/m]	[dBuV/m]	[dB]	
1	1249.361	45.13	-5.66	39.47	74.00	-34.53	Horizontal
2	1449.2166	44.68	-5.58	39.10	74.00	-34.90	Horizontal
3	2492.4992	47.98	-1.74	46.24	74.00	-27.76	Horizontal
4	3188.0209	40.63	3.13	43.76	74.00	-30.24	Horizontal
5	3892.0991	40.09	5.24	45.33	74.00	-28.67	Horizontal
6	4965.9407	39.42	6.87	46.29	74.00	-27.71	Horizontal

- Remark: 1. Measurement = Reading Level + Correct Factor.  
 2. If Peak Result complies with AV limit, AV Result is deemed to comply with AV limit.  
 3. Test setup: RBW: 1 MHz, VBW: 3 MHz, Sweep time: auto.  
 4. Peak: Peak detector.  
 5. AVG: VBW refer to section 6.2.  
 6. For below 6.5GHz part, filter losses were only considered in the spurious frequency bands and the authorized band were not corrected for Band Reject Filter losses.  
 The proper operation of the transmitter prior to adding the filter to the measurement chain.  
 7. Only the worst case emission was recorded, if it complies with the limit, the other emissions deemed to comply with the limit.



Test Mode	Channel	Polarization	Verdict
11A	5180	Vertical	PASS



PK Result:

No.	Frequency	Reading Level	Correct Factor	Result	Limit	Margin	Remark
	[MHz]	[dBuV/m]	[dB]	[dBuV/m]	[dBuV/m]	[dB]	
1	1195.5773	45.42	-6.13	39.29	74.00	-34.71	Vertical
2	1326.3696	45.08	-5.84	39.24	74.00	-34.76	Vertical
3	2478.442	44.49	-1.94	42.55	74.00	-31.45	Vertical
4	3188.0209	40.43	3.13	43.56	74.00	-30.44	Vertical
5	4463.5515	39.65	5.89	45.54	74.00	-28.46	Vertical
6	5449.9944	38.72	7.59	46.31	74.00	-27.69	Vertical

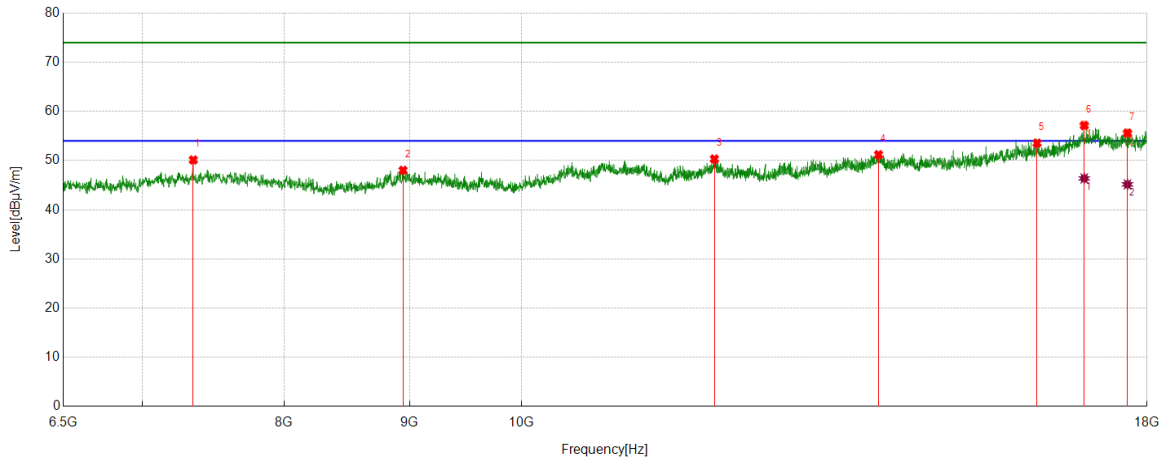
- Remark: 1. Measurement = Reading Level + Correct Factor.  
 2. If Peak Result complies with AV limit, AV Result is deemed to comply with AV limit.  
 3. Test setup: RBW: 1 MHz, VBW: 3 MHz, Sweep time: auto.  
 4. Peak: Peak detector.  
 5. AVG: VBW refer to section 6.2.  
 6. For below 6.5GHz part, filter losses were only considered in the spurious frequency bands and the authorized band were not corrected for Band Reject Filter losses.  
 The proper operation of the transmitter prior to adding the filter to the measurement chain.  
 7. Only the worst case emission was recorded, if it complies with the limit, the other emissions deemed to comply with the limit.



**PART 2: For 6.5GHz to 18GHz:**

**Antenna Type 2: External Dipole Antenna**

Test Mode	Channel	Polarization	Verdict
11A	5180	Horizontal	PASS



**PK Result:**

No.	Frequency	Reading Level	Correct Factor	Result	Limit	Margin	Remark
	[MHz]	[dBuV/m]	[dB]	[dBuV/m]	[dBuV/m]	[dB]	
1	7345.3909	40.57	9.56	50.13	74.00	-23.87	Horizontal
2	8946.0743	38.51	9.51	48.02	74.00	-25.98	Horizontal
3	11986.4144	36.76	13.56	50.32	74.00	-23.68	Horizontal
4	13985.831	36.40	14.80	51.20	74.00	-22.80	Horizontal
5	16232.5388	35.44	18.11	53.55	74.00	-20.45	Horizontal
6	16968.6614	36.55	20.51	57.06	74.00	-16.94	Horizontal
7	17672.1954	36.33	19.15	55.48	74.00	-18.52	Horizontal

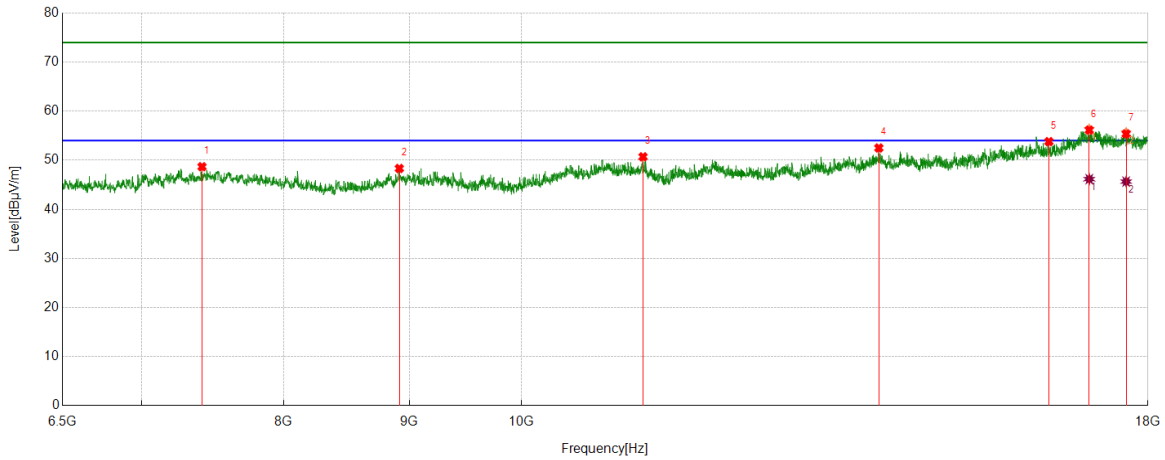
**AV Result:**

No.	Frequency	Reading Level	Correct Factor	Result	Limit	Margin	Remark
	[MHz]	[dBuV/m]	[dB]	[dBuV/m]	[dBuV/m]	[dB]	
1	16968.6614	25.86	20.51	46.37	54.00	-7.63	Horizontal
2	17672.1954	26.01	19.15	45.16	54.00	-8.84	Horizontal

- Remark: 1. Measurement = Reading Level + Correct Factor.  
 2. If Peak Result complies with AV limit, AV Result is deemed to comply with AV limit.  
 3. Test setup: RBW: 1 MHz, VBW: 3 MHz, Sweep time: auto.  
 4. Peak: Peak detector.  
 5. AVG: VBW refer to section 6.2.  
 6. For above 6.5GHz part, filter losses were only considered in the spurious frequency bands and the authorized band were not corrected for HPF losses. The proper operation of the transmitter prior to adding the filter to the measurement chain.  
 7. Only the worst case emission was recorded, if it complies with the limit, the other emissions deemed to comply with the limit.



Test Mode	Channel	Polarization	Verdict
11A	5180	Vertical	PASS



PK Result:

No.	Frequency	Reading Level	Correct Factor	Result	Limit	Margin	Remark
	[MHz]	[dBuV/m]	[dB]	[dBuV/m]	[dBuV/m]	[dB]	
1	7410.5684	39.29	9.39	48.68	74.00	-25.32	Vertical
2	8917.3196	39.00	9.33	48.33	74.00	-25.67	Vertical
3	11208.118	38.51	12.19	50.70	74.00	-23.30	Vertical
4	13983.914	37.76	14.74	52.50	74.00	-21.50	Vertical
5	16403.1505	37.12	16.67	53.79	74.00	-20.21	Vertical
6	17035.7560	36.87	19.49	56.36	74.00	-17.64	Vertical
7	17635.7726	36.87	18.76	55.63	74.00	-18.37	Vertical

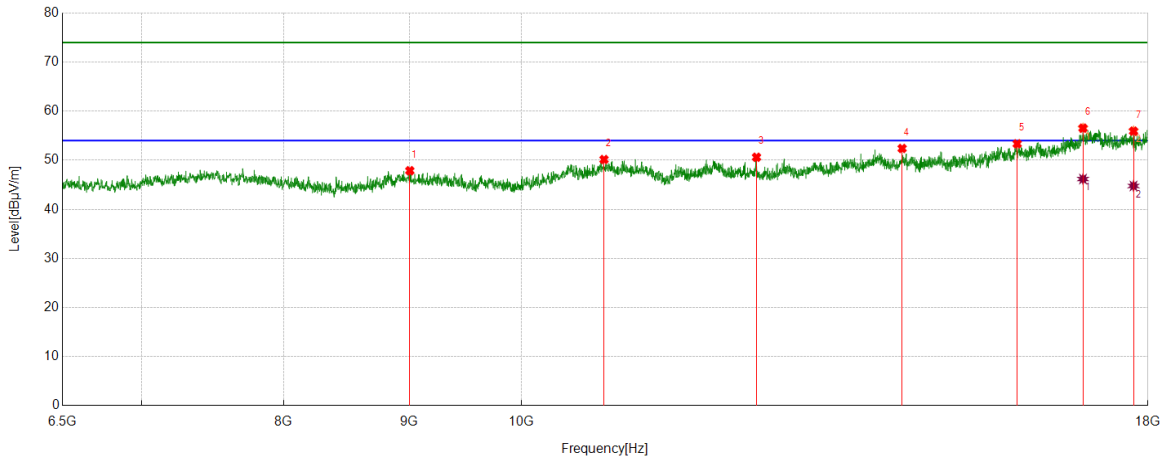
AV Result:

No.	Frequency	Reading Level	Correct Factor	Result	Limit	Margin	Remark
	[MHz]	[dBuV/m]	[dB]	[dBuV/m]	[dBuV/m]	[dB]	
1	17035.7560	26.66	19.49	46.15	54.00	-7.85	Vertical
2	17635.7726	26.89	18.76	45.65	54.00	-8.35	Vertical

- Remark: 1. Measurement = Reading Level + Correct Factor.  
 2. If Peak Result complies with AV limit, AV Result is deemed to comply with AV limit.  
 3. Test setup: RBW: 1 MHz, VBW: 3 MHz, Sweep time: auto.  
 4. Peak: Peak detector.  
 5. AVG: VBW refer to section 6.2.  
 6. For above 6.5GHz part, filter losses were only considered in the spurious frequency bands and the authorized band were not corrected for HPF losses. The proper operation of the transmitter prior to adding the filter to the measurement chain.  
 7. Only the worst case emission was recorded, if it complies with the limit, the other emissions deemed to comply with the limit.



Test Mode	Channel	Polarization	Verdict
11A	5200	Horizontal	PASS



PK Result:

No.	Frequency	Reading Level	Correct Factor	Result	Limit	Margin	Remark
	[MHz]	[dBuV/m]	[dB]	[dBuV/m]	[dBuV/m]	[dB]	
1	9005.5009	38.14	9.73	47.87	74.00	-26.13	Horizontal
2	10805.5509	37.67	12.48	50.15	74.00	-23.85	Horizontal
3	12467.5779	38.68	11.93	50.61	74.00	-23.39	Horizontal
4	14292.5488	37.72	14.68	52.40	74.00	-21.60	Horizontal
5	15921.987	36.52	16.83	53.35	74.00	-20.65	Horizontal
6	16936.0727	37.19	19.34	56.53	74.00	-17.47	Horizontal
7	17758.4597	36.98	18.99	55.97	74.00	-18.03	Horizontal

AV Result:

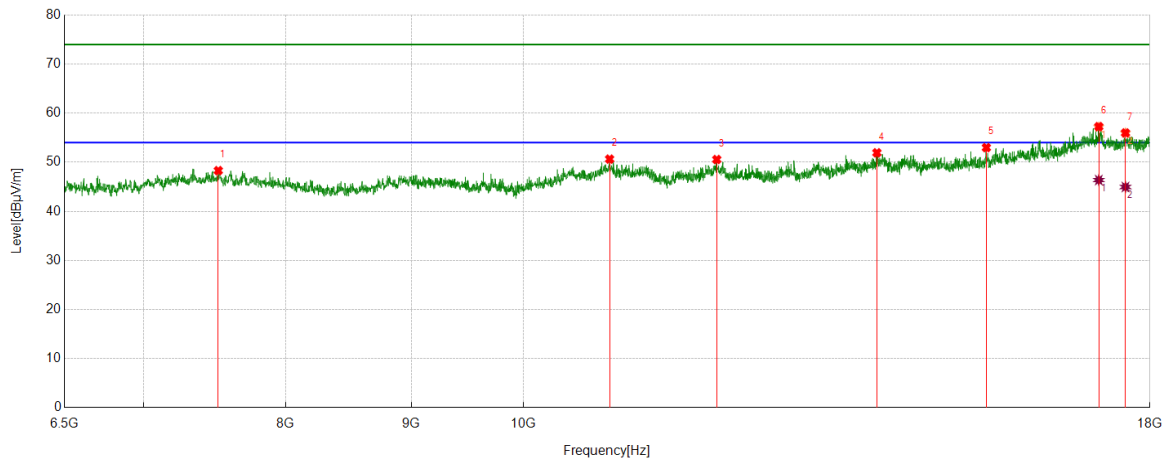
No.	Frequency	Reading Level	Correct Factor	Result	Limit	Margin	Remark
	[MHz]	[dBuV/m]	[dB]	[dBuV/m]	[dBuV/m]	[dB]	
1	16936.0727	26.83	19.34	46.17	54.00	-7.83	Horizontal
2	17758.4597	25.77	18.99	44.76	54.00	-9.24	Horizontal

- Remark: 1. Measurement = Reading Level + Correct Factor.  
 2. If Peak Result complies with AV limit, AV Result is deemed to comply with AV limit.  
 3. Test setup: RBW: 1 MHz, VBW: 3 MHz, Sweep time: auto.  
 4. Peak: Peak detector.  
 5. AVG: VBW refer to section 6.2.  
 6. For above 6.5GHz part, filter losses were only considered in the spurious frequency bands and the authorized band were not corrected for HPF losses. The proper operation of the transmitter prior to adding the filter to the measurement chain.  
 7. Only the worst case emission was recorded, if it complies with the limit, the other emissions deemed to comply with the limit.





Test Mode	Channel	Polarization	Verdict
11A	5200	Vertical	PASS



PK Result:

No.	Frequency	Reading Level	Correct Factor	Result	Limit	Margin	Remark
	[MHz]	[dBuV/m]	[dB]	[dBuV/m]	[dBuV/m]	[dB]	
1	7510.2517	38.83	9.47	48.30	74.00	-25.70	Vertical
2	10841.9737	37.96	12.68	50.64	74.00	-23.36	Vertical
3	11988.3314	36.98	13.58	50.56	74.00	-23.44	Vertical
4	13932.1554	37.23	14.70	51.93	74.00	-22.07	Vertical
5	15438.9065	37.99	14.99	52.98	74.00	-21.02	Vertical
6	17156.5261	37.41	19.75	57.16	74.00	-16.84	Vertical
7	17591.6819	37.27	18.66	55.93	74.00	-18.07	Vertical

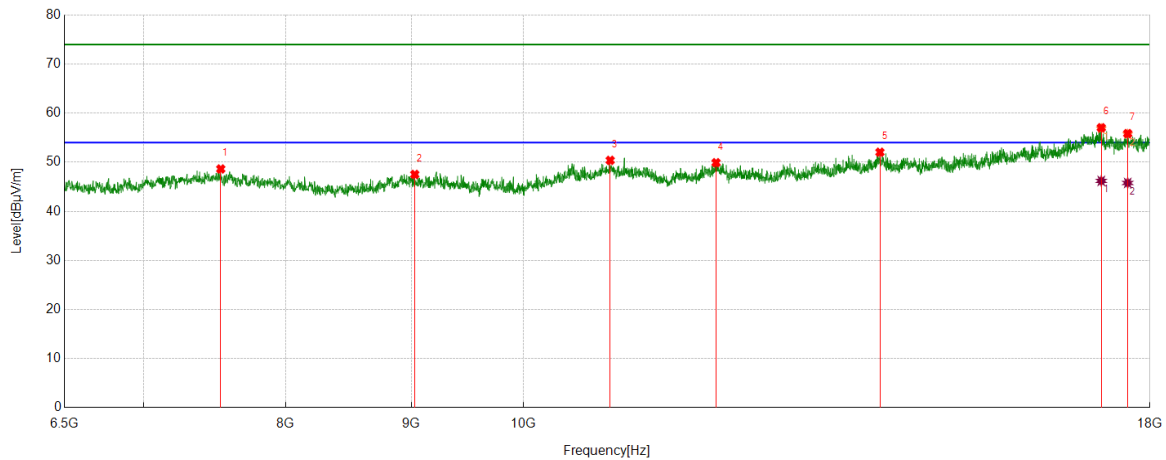
AV Result:

No.	Frequency	Reading Level	Correct Factor	Result	Limit	Margin	Remark
	[MHz]	[dBuV/m]	[dB]	[dBuV/m]	[dBuV/m]	[dB]	
1	17156.5261	26.62	19.75	46.37	54.00	-7.63	Vertical
2	17591.6819	26.30	18.66	44.96	54.00	-9.04	Vertical

- Remark: 1. Measurement = Reading Level + Correct Factor.  
 2. If Peak Result complies with AV limit, AV Result is deemed to comply with AV limit.  
 3. Test setup: RBW: 1 MHz, VBW: 3 MHz, Sweep time: auto.  
 4. Peak: Peak detector.  
 5. AVG: VBW refer to section 6.2.  
 6. For above 6.5GHz part, filter losses were only considered in the spurious frequency bands and the authorized band were not corrected for HPF losses. The proper operation of the transmitter prior to adding the filter to the measurement chain.  
 7. Only the worst case emission was recorded, if it complies with the limit, the other emissions deemed to comply with the limit.



Test Mode	Channel	Polarization	Verdict
11A	5220	Horizontal	PASS



PK Result:

No.	Frequency	Reading Level	Correct Factor	Result	Limit	Margin	Remark
	[MHz]	[dBuV/m]	[dB]	[dBuV/m]	[dBuV/m]	[dB]	
1	7527.5046	39.10	9.53	48.63	74.00	-25.37	Horizontal
2	9030.4217	37.94	9.58	47.52	74.00	-26.48	Horizontal
3	10847.7246	37.78	12.61	50.39	74.00	-23.61	Horizontal
4	11980.6634	36.43	13.48	49.91	74.00	-24.09	Horizontal
5	13972.4121	37.41	14.63	52.04	74.00	-21.96	Horizontal
6	17196.7828	37.19	19.65	56.84	74.00	-17.16	Horizontal
7	17628.1047	36.83	18.89	55.72	74.00	-18.28	Horizontal

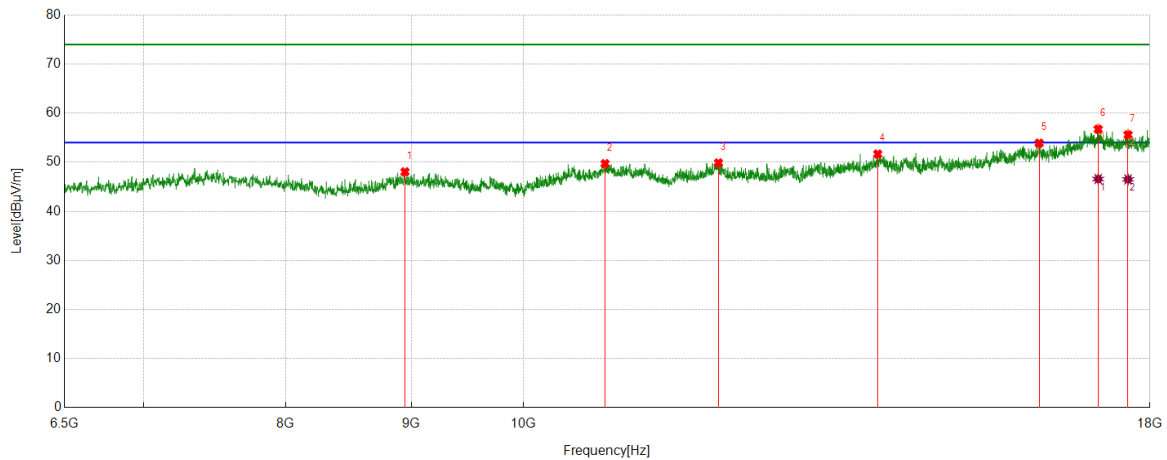
AV Result:

No.	Frequency	Reading Level	Correct Factor	Result	Limit	Margin	Remark
	[MHz]	[dBuV/m]	[dB]	[dBuV/m]	[dBuV/m]	[dB]	
1	17196.7828	26.55	19.65	46.20	54.00	-7.80	Horizontal
2	17628.1047	26.89	18.89	45.78	54.00	-8.22	Horizontal

- Remark: 1. Measurement = Reading Level + Correct Factor.  
 2. If Peak Result complies with AV limit, AV Result is deemed to comply with AV limit.  
 3. Test setup: RBW: 1 MHz, VBW: 3 MHz, Sweep time: auto.  
 4. Peak: Peak detector.  
 5. AVG: VBW refer to section 6.2.  
 6. For above 6.5GHz part, filter losses were only considered in the spurious frequency bands and the authorized band were not corrected for HPF losses. The proper operation of the transmitter prior to adding the filter to the measurement chain.  
 7. Only the worst case emission was recorded, if it complies with the limit, the other emissions deemed to comply with the limit.



Test Mode	Channel	Polarization	Verdict
11A	5220	Vertical	PASS



PK Result:

No.	Frequency	Reading Level	Correct Factor	Result	Limit	Margin	Remark
	[MHz]	[dBuV/m]	[dB]	[dBuV/m]	[dBuV/m]	[dB]	
1	8947.9913	38.51	9.53	48.04	74.00	-25.96	Vertical
2	10795.966	37.22	12.49	49.71	74.00	-24.29	Vertical
3	12007.5013	36.51	13.36	49.87	74.00	-24.13	Vertical
4	13943.6573	36.74	14.93	51.67	74.00	-22.33	Vertical
5	16222.9538	36.26	17.63	53.89	74.00	-20.11	Vertical
6	17146.9412	37.55	19.31	56.86	74.00	-17.14	Vertical
7	17633.8556	36.92	18.85	55.77	74.00	-18.23	Vertical

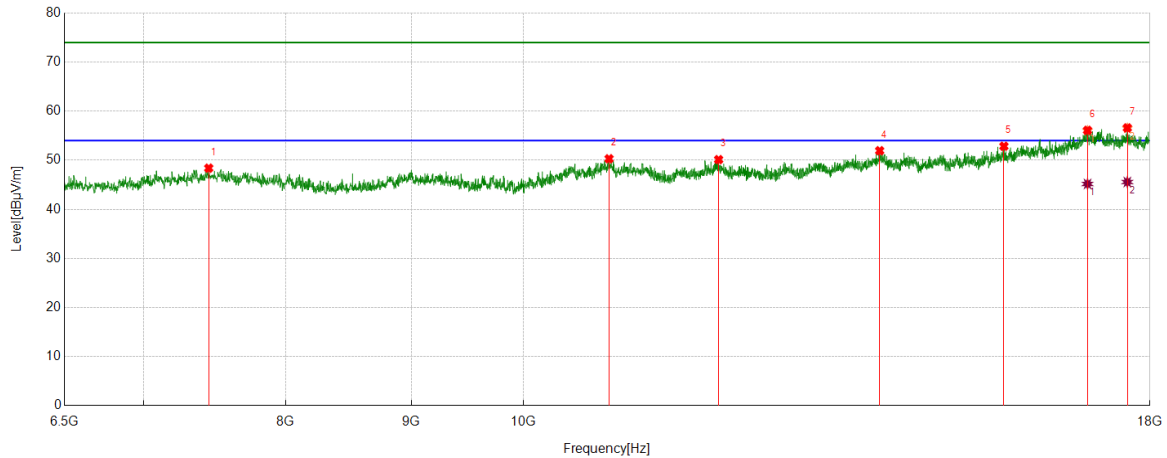
AV Result:

No.	Frequency	Reading Level	Correct Factor	Result	Limit	Margin	Remark
	[MHz]	[dBuV/m]	[dB]	[dBuV/m]	[dBuV/m]	[dB]	
1	17146.9412	27.28	19.31	46.59	54.00	-7.41	Vertical
2	17633.8556	27.65	18.85	46.50	54.00	-7.50	Vertical

- Remark: 1. Measurement = Reading Level + Correct Factor.  
 2. If Peak Result complies with AV limit, AV Result is deemed to comply with AV limit.  
 3. Test setup: RBW: 1 MHz, VBW: 3 MHz, Sweep time: auto.  
 4. Peak: Peak detector.  
 5. AVG: VBW refer to section 6.2.  
 6. For above 6.5GHz part, filter losses were only considered in the spurious frequency bands and the authorized band were not corrected for HPF losses. The proper operation of the transmitter prior to adding the filter to the measurement chain.  
 7. Only the worst case emission was recorded, if it complies with the limit, the other emissions deemed to comply with the limit.



Test Mode	Channel	Polarization	Verdict
11A	5240	Horizontal	PASS



PK Result:

No.	Frequency	Reading Level	Correct Factor	Result	Limit	Margin	Remark
	[MHz]	[dBuV/m]	[dB]	[dBuV/m]	[dBuV/m]	[dB]	
1	7443.1572	39.01	9.38	48.39	74.00	-25.61	Horizontal
2	10836.2227	37.64	12.66	50.30	74.00	-23.70	Horizontal
3	12009.4182	36.79	13.34	50.13	74.00	-23.87	Horizontal
4	13968.5781	37.32	14.62	51.94	74.00	-22.06	Horizontal
5	15695.7826	36.45	16.40	52.85	74.00	-21.15	Horizontal
6	16976.3294	36.23	19.81	56.04	74.00	-17.96	Horizontal
7	17622.3537	38.02	18.49	56.51	74.00	-17.49	Horizontal

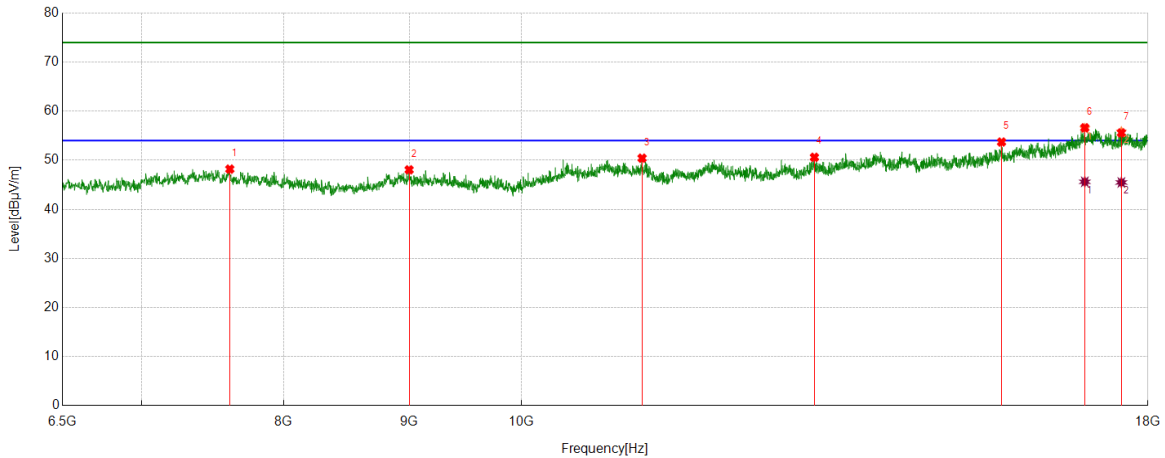
AV Result:

No.	Frequency	Reading Level	Correct Factor	Result	Limit	Margin	Remark
	[MHz]	[dBuV/m]	[dB]	[dBuV/m]	[dBuV/m]	[dB]	
1	16976.3294	25.36	19.81	45.17	54.00	-8.83	Horizontal
2	17622.3537	27.07	18.49	45.56	54.00	-8.44	Horizontal

- Remark: 1. Measurement = Reading Level + Correct Factor.  
 2. If Peak Result complies with AV limit, AV Result is deemed to comply with AV limit.  
 3. Test setup: RBW: 1 MHz, VBW: 3 MHz, Sweep time: auto.  
 4. Peak: Peak detector.  
 5. AVG: VBW refer to section 6.2.  
 6. For above 6.5GHz part, filter losses were only considered in the spurious frequency bands and the authorized band were not corrected for HPF losses. The proper operation of the transmitter prior to adding the filter to the measurement chain.  
 7. Only the worst case emission was recorded, if it complies with the limit, the other emissions deemed to comply with the limit.



Test Mode	Channel	Polarization	Verdict
11A	5240	Vertical	PASS



PK Result:

No.	Frequency	Reading Level	Correct Factor	Result	Limit	Margin	Remark
	[MHz]	[dBuV/m]	[dB]	[dBuV/m]	[dBuV/m]	[dB]	
1	7606.101	38.68	9.51	48.19	74.00	-25.81	Vertical
2	8999.75	38.33	9.72	48.05	74.00	-25.95	Vertical
3	11198.5331	37.89	12.53	50.42	74.00	-23.58	Vertical
4	13163.4439	37.80	12.80	50.60	74.00	-23.40	Vertical
5	15690.0317	37.22	16.49	53.71	74.00	-20.29	Vertical
6	16964.8275	36.39	20.11	56.50	74.00	-17.50	Vertical
7	17557.1762	37.33	18.24	55.57	74.00	-18.43	Vertical

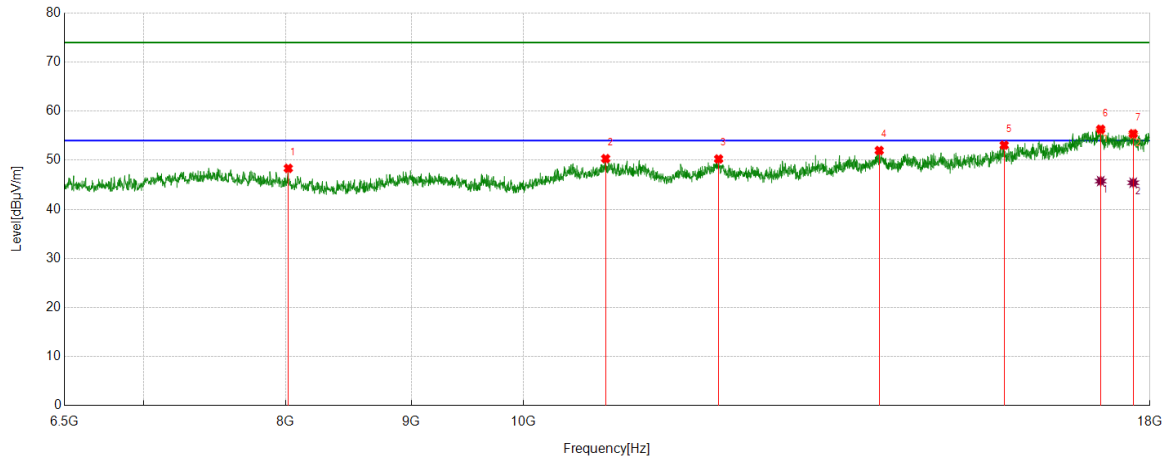
AV Result:

No.	Frequency	Reading Level	Correct Factor	Result	Limit	Margin	Remark
	[MHz]	[dBuV/m]	[dB]	[dBuV/m]	[dBuV/m]	[dB]	
1	16964.8275	25.50	20.11	45.61	54.00	-8.39	Vertical
2	17557.1762	27.24	18.24	45.48	54.00	-8.52	Vertical

- Remark: 1. Measurement = Reading Level + Correct Factor.  
 2. If Peak Result complies with AV limit, AV Result is deemed to comply with AV limit.  
 3. Test setup: RBW: 1 MHz, VBW: 3 MHz, Sweep time: auto.  
 4. Peak: Peak detector.  
 5. AVG: VBW refer to section 6.2.  
 6. For above 6.5GHz part, filter losses were only considered in the spurious frequency bands and the authorized band were not corrected for HPF losses. The proper operation of the transmitter prior to adding the filter to the measurement chain.  
 7. Only the worst case emission was recorded, if it complies with the limit, the other emissions deemed to comply with the limit.



Test Mode	Channel	Polarization	Verdict
11A	5260	Horizontal	PASS



PK Result:

No.	Frequency	Reading Level	Correct Factor	Result	Limit	Margin	Remark
	[MHz]	[dBuV/m]	[dB]	[dBuV/m]	[dBuV/m]	[dB]	
1	8020.17	39.49	8.86	48.35	74.00	-25.65	Horizontal
2	10801.717	37.88	12.45	50.33	74.00	-23.67	Horizontal
3	12009.4182	36.92	13.34	50.26	74.00	-23.74	Horizontal
4	13962.8271	37.43	14.55	51.98	74.00	-22.02	Horizontal
5	15699.6166	36.72	16.35	53.07	74.00	-20.93	Horizontal
6	17187.1979	36.84	19.20	56.04	74.00	-17.96	Horizontal
7	17720.1200	36.08	19.11	55.19	74.00	-18.81	Horizontal

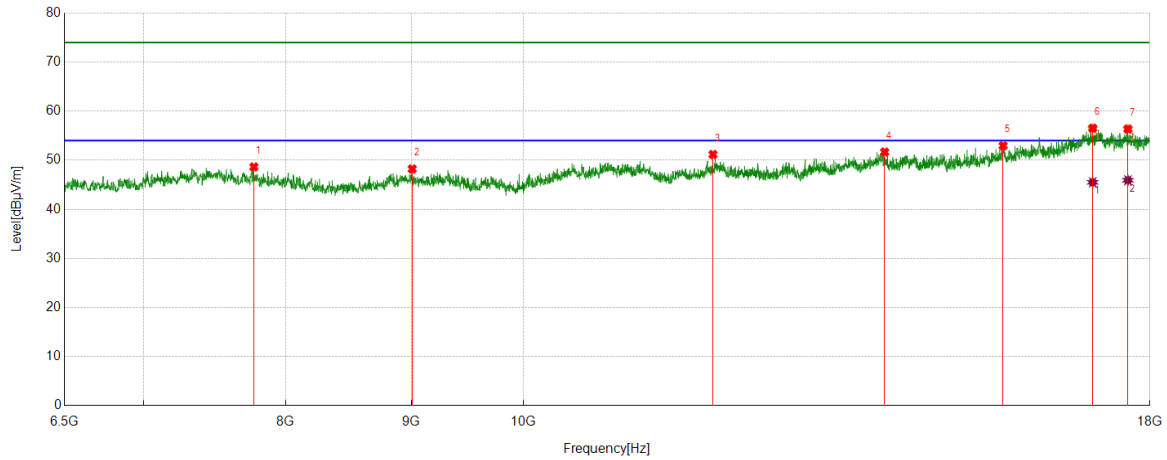
AV Result:

No.	Frequency	Reading Level	Correct Factor	Result	Limit	Margin	Remark
	[MHz]	[dBuV/m]	[dB]	[dBuV/m]	[dBuV/m]	[dB]	
1	17187.1979	26.55	19.20	45.75	54.00	-8.25	Horizontal
2	17720.1200	26.31	19.11	45.42	54.00	-8.58	Horizontal

- Remark: 1. Measurement = Reading Level + Correct Factor.  
 2. If Peak Result complies with AV limit, AV Result is deemed to comply with AV limit.  
 3. Test setup: RBW: 1 MHz, VBW: 3 MHz, Sweep time: auto.  
 4. Peak: Peak detector.  
 5. AVG: VBW refer to section 6.2.  
 6. For above 6.5GHz part, filter losses were only considered in the spurious frequency bands and the authorized band were not corrected for HPF losses. The proper operation of the transmitter prior to adding the filter to the measurement chain.  
 7. Only the worst case emission was recorded, if it complies with the limit, the other emissions deemed to comply with the limit.



Test Mode	Channel	Polarization	Verdict
11A	5260	Vertical	PASS



PK Result:

No.	Frequency	Reading Level	Correct Factor	Result	Limit	Margin	Remark
	[MHz]	[dBuV/m]	[dB]	[dBuV/m]	[dBuV/m]	[dB]	
1	7765.2109	39.68	8.96	48.64	74.00	-25.36	Vertical
2	9009.3349	38.48	9.75	48.23	74.00	-25.77	Vertical
3	11946.1577	38.06	13.12	51.18	74.00	-22.82	Vertical
4	14033.7556	36.73	14.94	51.67	74.00	-22.33	Vertical
5	15684.2807	36.65	16.31	52.96	74.00	-21.04	Vertical
6	17058.7598	36.13	20.26	56.39	74.00	-17.61	Vertical
7	17631.9387	37.36	18.94	56.30	74.00	-17.70	Vertical

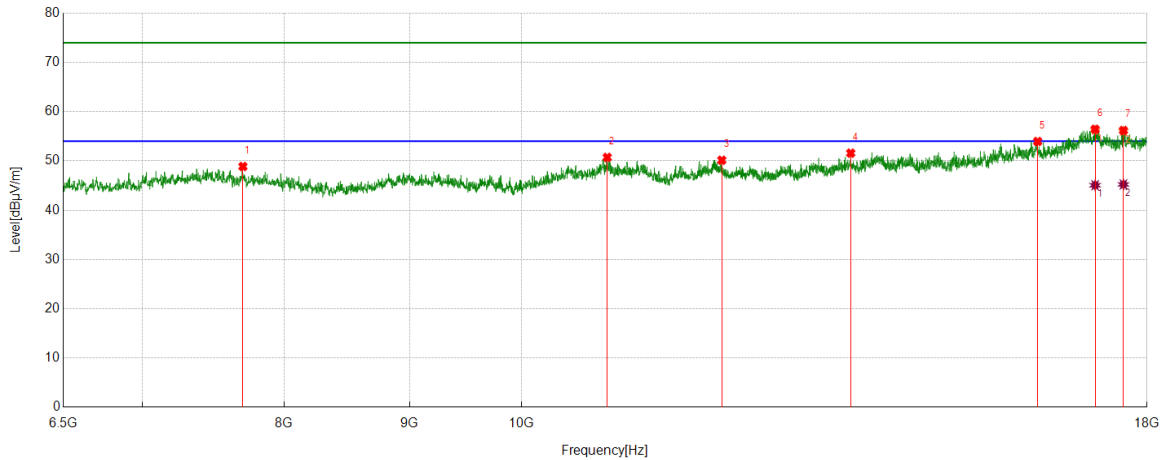
AV Result:

No.	Frequency	Reading Level	Correct Factor	Result	Limit	Margin	Remark
	[MHz]	[dBuV/m]	[dB]	[dBuV/m]	[dBuV/m]	[dB]	
1	17058.7598	25.24	20.26	45.50	54.00	-8.50	Vertical
2	17631.9387	26.98	18.94	45.92	54.00	-8.08	Vertical

- Remark: 1. Measurement = Reading Level + Correct Factor.  
 2. If Peak Result complies with AV limit, AV Result is deemed to comply with AV limit.  
 3. Test setup: RBW: 1 MHz, VBW: 3 MHz, Sweep time: auto.  
 4. Peak: Peak detector.  
 5. AVG: VBW refer to section 6.2.  
 6. For above 6.5GHz part, filter losses were only considered in the spurious frequency bands and the authorized band were not corrected for HPF losses. The proper operation of the transmitter prior to adding the filter to the measurement chain.  
 7. Only the worst case emission was recorded, if it complies with the limit, the other emissions deemed to comply with the limit.



Test Mode	Channel	Polarization	Verdict
11A	5280	Horizontal	PASS



PK Result:

No.	Frequency	Reading Level	Correct Factor	Result	Limit	Margin	Remark
	[MHz]	[dBuV/m]	[dB]	[dBuV/m]	[dBuV/m]	[dB]	
1	7696.1994	39.35	9.52	48.87	74.00	-25.13	Horizontal
2	10838.1397	38.04	12.68	50.72	74.00	-23.28	Horizontal
3	12070.7618	36.89	13.26	50.15	74.00	-23.85	Horizontal
4	13625.4376	38.06	13.52	51.58	74.00	-22.42	Horizontal
5	16242.1237	36.04	17.91	53.95	74.00	-20.05	Horizontal
6	17143.1072	36.95	19.27	56.22	74.00	-17.78	Horizontal
7	17605.1009	37.44	18.59	56.03	74.00	-17.97	Horizontal

AV Result:

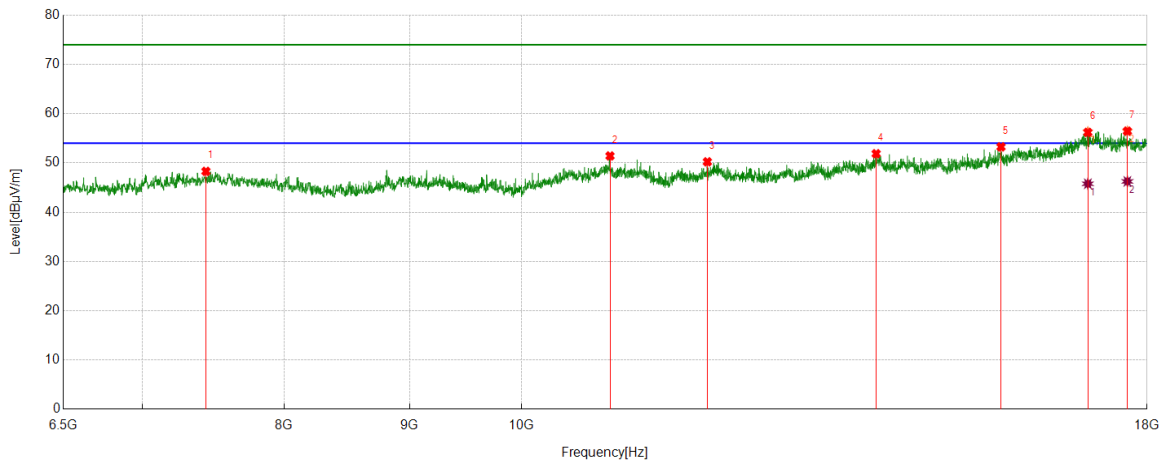
No.	Frequency	Reading Level	Correct Factor	Result	Limit	Margin	Remark
	[MHz]	[dBuV/m]	[dB]	[dBuV/m]	[dBuV/m]	[dB]	
1	17143.1072	25.80	19.27	45.07	54.00	-8.93	Horizontal
2	17605.1009	26.64	18.59	45.23	54.00	-8.77	Horizontal

- Remark: 1. Measurement = Reading Level + Correct Factor.  
 2. If Peak Result complies with AV limit, AV Result is deemed to comply with AV limit.  
 3. Test setup: RBW: 1 MHz, VBW: 3 MHz, Sweep time: auto.  
 4. Peak: Peak detector.  
 5. AVG: VBW refer to section 6.2.  
 6. For above 6.5GHz part, filter losses were only considered in the spurious frequency bands and the authorized band were not corrected for HPF losses. The proper operation of the transmitter prior to adding the filter to the measurement chain.  
 7. Only the worst case emission was recorded, if it complies with the limit, the other emissions deemed to comply with the limit.





Test Mode	Channel	Polarization	Verdict
11A	5280	Vertical	PASS



PK Result:

No.	Frequency	Reading Level	Correct Factor	Result	Limit	Margin	Remark
	[MHz]	[dBuV/m]	[dB]	[dBuV/m]	[dBuV/m]	[dB]	
1	7433.5723	38.85	9.44	48.29	74.00	-25.71	Vertical
2	10866.8945	38.61	12.81	51.42	74.00	-22.58	Vertical
3	11907.818	37.37	12.86	50.23	74.00	-23.77	Vertical
4	13955.1592	37.30	14.57	51.87	74.00	-22.13	Vertical
5	15691.9487	36.80	16.46	53.26	74.00	-20.74	Vertical
6	17026.1710	36.87	19.48	56.35	74.00	-17.65	Vertical
7	17670.2784	37.16	19.29	56.45	74.00	-17.55	Vertical

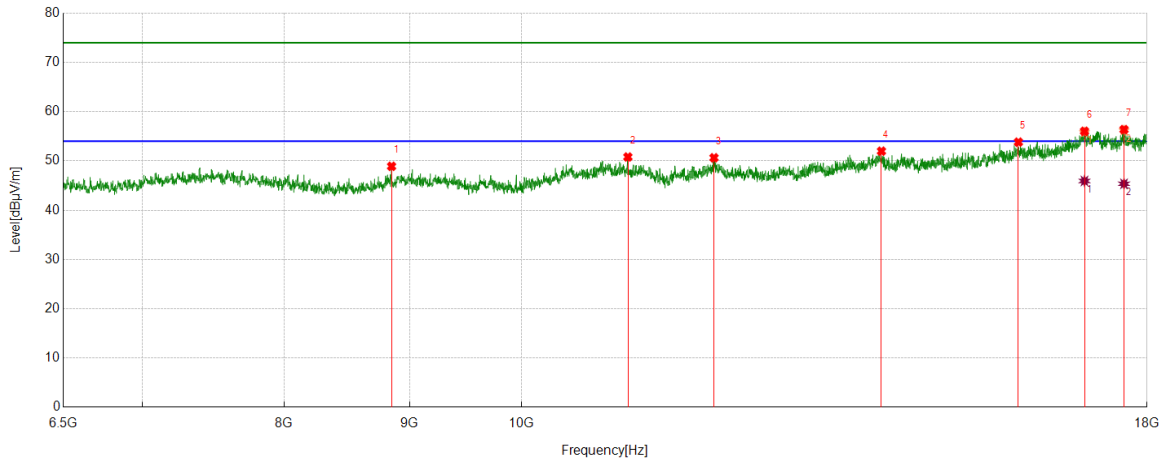
AV Result:

No.	Frequency	Reading Level	Correct Factor	Result	Limit	Margin	Remark
	[MHz]	[dBuV/m]	[dB]	[dBuV/m]	[dBuV/m]	[dB]	
1	17026.1710	26.29	19.48	45.77	54.00	-8.23	Vertical
2	17670.2784	26.96	19.29	46.25	54.00	-7.75	Vertical

- Remark: 1. Measurement = Reading Level + Correct Factor.  
 2. If Peak Result complies with AV limit, AV Result is deemed to comply with AV limit.  
 3. Test setup: RBW: 1 MHz, VBW: 3 MHz, Sweep time: auto.  
 4. Peak: Peak detector.  
 5. AVG: VBW refer to section 6.2.  
 6. For above 6.5GHz part, filter losses were only considered in the spurious frequency bands and the authorized band were not corrected for HPF losses. The proper operation of the transmitter prior to adding the filter to the measurement chain.  
 7. Only the worst case emission was recorded, if it complies with the limit, the other emissions deemed to comply with the limit.



Test Mode	Channel	Polarization	Verdict
11A	5300	Horizontal	PASS



PK Result:

No.	Frequency	Reading Level	Correct Factor	Result	Limit	Margin	Remark
	[MHz]	[dBuV/m]	[dB]	[dBuV/m]	[dBuV/m]	[dB]	
1	8850.225	40.00	8.91	48.91	74.00	-25.09	Horizontal
2	11050.9252	38.10	12.70	50.80	74.00	-23.20	Horizontal
3	11982.5804	37.13	13.51	50.64	74.00	-23.36	Horizontal
4	14024.1707	36.97	15.01	51.98	74.00	-22.02	Horizontal
5	15950.7418	37.38	16.44	53.82	74.00	-20.18	Horizontal
6	16972.4954	35.48	20.32	55.80	74.00	-18.20	Horizontal
7	17614.6858	37.71	18.50	56.21	74.00	-17.79	Horizontal

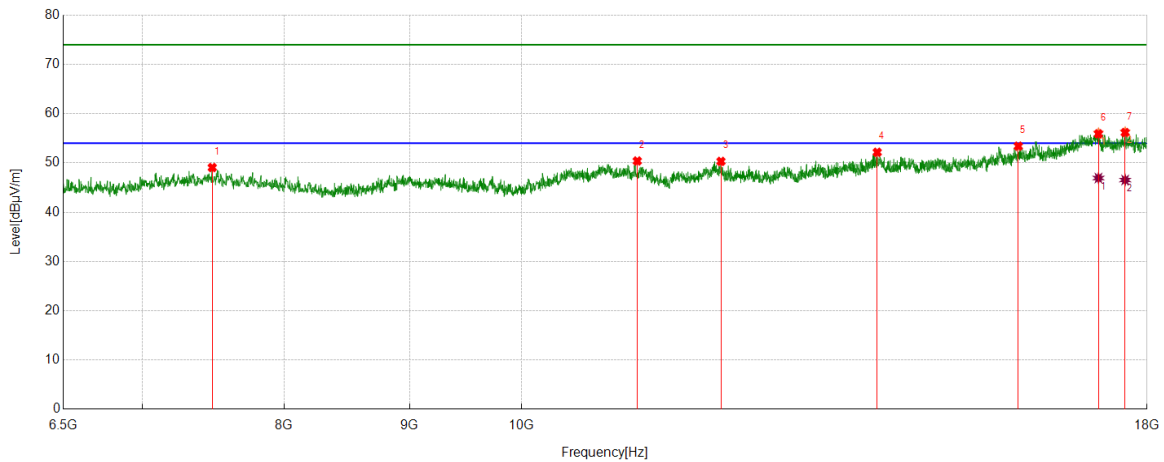
AV Result:

No.	Frequency	Reading Level	Correct Factor	Result	Limit	Margin	Remark
	[MHz]	[dBuV/m]	[dB]	[dBuV/m]	[dBuV/m]	[dB]	
1	16972.4954	25.61	20.32	45.93	54.00	-8.07	Horizontal
2	17614.6858	26.86	18.50	45.36	54.00	-8.64	Horizontal

- Remark: 1. Measurement = Reading Level + Correct Factor.  
 2. If Peak Result complies with AV limit, AV Result is deemed to comply with AV limit.  
 3. Test setup: RBW: 1 MHz, VBW: 3 MHz, Sweep time: auto.  
 4. Peak: Peak detector.  
 5. AVG: VBW refer to section 6.2.  
 6. For above 6.5GHz part, filter losses were only considered in the spurious frequency bands and the authorized band were not corrected for HPF losses. The proper operation of the transmitter prior to adding the filter to the measurement chain.  
 7. Only the worst case emission was recorded, if it complies with the limit, the other emissions deemed to comply with the limit.



Test Mode	Channel	Polarization	Verdict
11A	5300	Vertical	PASS



PK Result:

No.	Frequency	Reading Level	Correct Factor	Result	Limit	Margin	Remark
	[MHz]	[dBuV/m]	[dB]	[dBuV/m]	[dBuV/m]	[dB]	
1	7477.6629	39.19	9.87	49.06	74.00	-24.94	Vertical
2	11148.6914	38.04	12.35	50.39	74.00	-23.61	Vertical
3	12061.1769	37.14	13.17	50.31	74.00	-23.69	Vertical
4	13968.5781	37.54	14.62	52.16	74.00	-21.84	Vertical
5	15948.8248	36.90	16.50	53.40	74.00	-20.60	Vertical
6	17196.7828	36.44	19.65	56.09	74.00	-17.91	Vertical
7	17633.8556	37.47	18.85	56.32	74.00	-17.68	Vertical

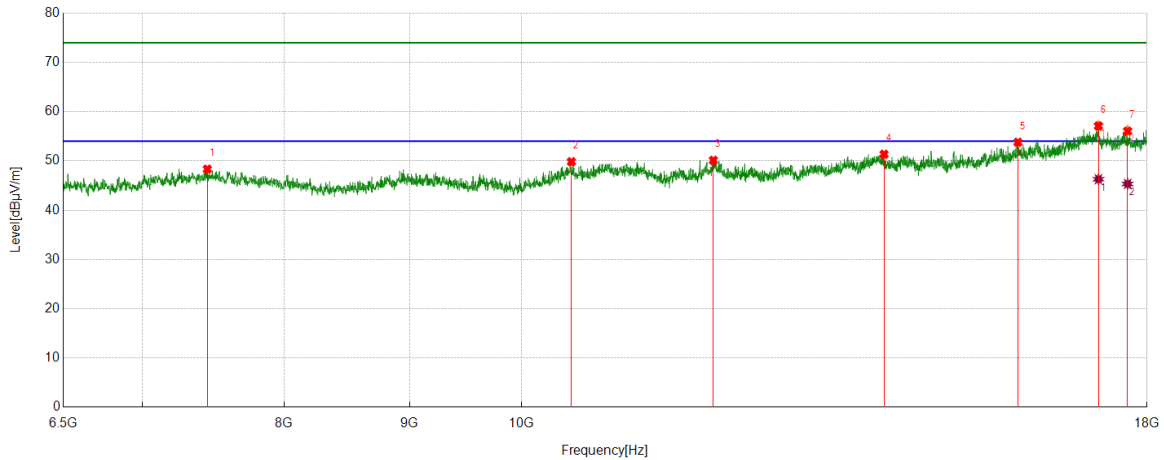
AV Result:

No.	Frequency	Reading Level	Correct Factor	Result	Limit	Margin	Remark
	[MHz]	[dBuV/m]	[dB]	[dBuV/m]	[dBuV/m]	[dB]	
1	17196.7828	27.28	19.65	46.93	54.00	-7.07	Vertical
2	17633.8556	27.68	18.85	46.53	54.00	-7.47	Vertical

- Remark: 1. Measurement = Reading Level + Correct Factor.  
 2. If Peak Result complies with AV limit, AV Result is deemed to comply with AV limit.  
 3. Test setup: RBW: 1 MHz, VBW: 3 MHz, Sweep time: auto.  
 4. Peak: Peak detector.  
 5. AVG: VBW refer to section 6.2.  
 6. For above 6.5GHz part, filter losses were only considered in the spurious frequency bands and the authorized band were not corrected for HPF losses. The proper operation of the transmitter prior to adding the filter to the measurement chain.  
 7. Only the worst case emission was recorded, if it complies with the limit, the other emissions deemed to comply with the limit.



Test Mode	Channel	Polarization	Verdict
11A	5320	Horizontal	PASS



PK Result:

No.	Frequency	Reading Level	Correct Factor	Result	Limit	Margin	Remark
	[MHz]	[dBuV/m]	[dB]	[dBuV/m]	[dBuV/m]	[dB]	
1	7443.1572	38.95	9.38	48.33	74.00	-25.67	Horizontal
2	10479.6633	37.66	12.18	49.84	74.00	-24.16	Horizontal
3	11974.9125	36.77	13.36	50.13	74.00	-23.87	Horizontal
4	14058.6764	36.85	14.51	51.36	74.00	-22.64	Horizontal
5	15943.0738	37.29	16.50	53.79	74.00	-20.21	Horizontal
6	17196.7828	37.6	19.65	57.25	74.00	-16.75	Horizontal
7	17674.1124	37.25	19.00	56.25	74.00	-17.75	Horizontal

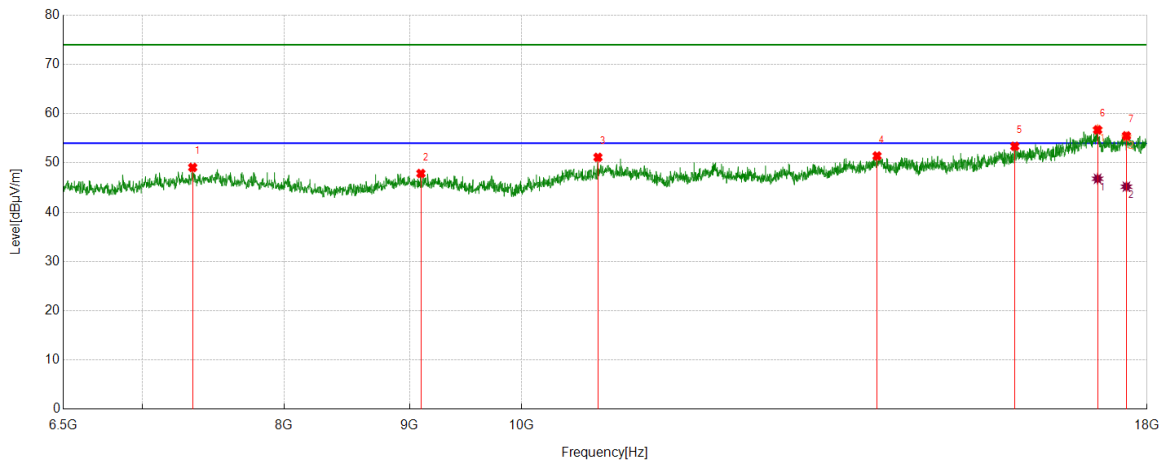
AV Result:

No.	Frequency	Reading Level	Correct Factor	Result	Limit	Margin	Remark
	[MHz]	[dBuV/m]	[dB]	[dBuV/m]	[dBuV/m]	[dB]	
1	17196.7828	26.64	19.65	46.29	54.00	-7.71	Horizontal
2	17674.1124	26.33	19.00	45.33	54.00	-8.67	Horizontal

- Remark: 1. Measurement = Reading Level + Correct Factor.  
 2. If Peak Result complies with AV limit, AV Result is deemed to comply with AV limit.  
 3. Test setup: RBW: 1 MHz, VBW: 3 MHz, Sweep time: auto.  
 4. Peak: Peak detector.  
 5. AVG: VBW refer to section 6.2.  
 6. For above 6.5GHz part, filter losses were only considered in the spurious frequency bands and the authorized band were not corrected for HPF losses. The proper operation of the transmitter prior to adding the filter to the measurement chain.  
 7. Only the worst case emission was recorded, if it complies with the limit, the other emissions deemed to comply with the limit.



Test Mode	Channel	Polarization	Verdict
11A	5320	Vertical	PASS



PK Result:

No.	Frequency	Reading Level	Correct Factor	Result	Limit	Margin	Remark
	[MHz]	[dBuV/m]	[dB]	[dBuV/m]	[dBuV/m]	[dB]	
1	7341.5569	39.52	9.56	49.08	74.00	-24.92	Vertical
2	9097.5163	38.49	9.37	47.86	74.00	-26.14	Vertical
3	10744.2074	38.68	12.46	51.14	74.00	-22.86	Vertical
4	13966.6611	36.83	14.59	51.42	74.00	-22.58	Vertical
5	15897.0662	37.02	16.36	53.38	74.00	-20.62	Vertical
6	17183.3639	37.59	19.16	56.75	74.00	-17.25	Vertical
7	17654.9425	36.73	18.49	55.22	74.00	-18.78	Vertical

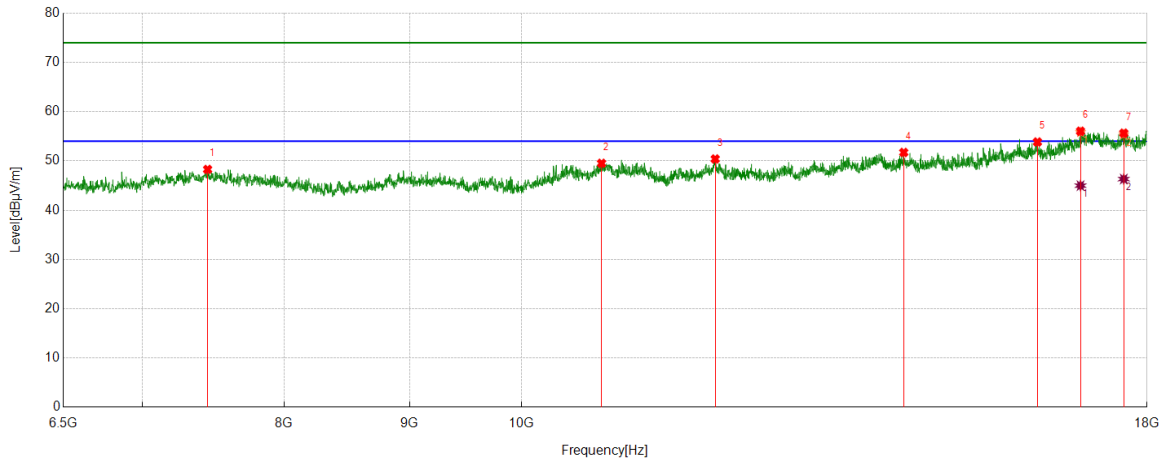
AV Result:

No.	Frequency	Reading Level	Correct Factor	Result	Limit	Margin	Remark
	[MHz]	[dBuV/m]	[dB]	[dBuV/m]	[dBuV/m]	[dB]	
1	17183.3639	27.63	19.16	46.79	54.00	-7.21	Vertical
2	17654.9425	26.69	18.49	45.18	54.00	-8.82	Vertical

- Remark: 1. Measurement = Reading Level + Correct Factor.  
 2. If Peak Result complies with AV limit, AV Result is deemed to comply with AV limit.  
 3. Test setup: RBW: 1 MHz, VBW: 3 MHz, Sweep time: auto.  
 4. Peak: Peak detector.  
 5. AVG: VBW refer to section 6.2.  
 6. For above 6.5GHz part, filter losses were only considered in the spurious frequency bands and the authorized band were not corrected for HPF losses. The proper operation of the transmitter prior to adding the filter to the measurement chain.  
 7. Only the worst case emission was recorded, if it complies with the limit, the other emissions deemed to comply with the limit.



Test Mode	Channel	Polarization	Verdict
11A	5500	Horizontal	PASS



PK Result:

No.	Frequency	Reading Level	Correct Factor	Result	Limit	Margin	Remark
	[MHz]	[dBuV/m]	[dB]	[dBuV/m]	[dBuV/m]	[dB]	
1	7445.0742	38.88	9.40	48.28	74.00	-25.72	Horizontal
2	10780.6301	36.98	12.53	49.51	74.00	-24.49	Horizontal
3	11995.9993	36.90	13.50	50.40	74.00	-23.60	Horizontal
4	14321.3036	36.91	14.81	51.72	74.00	-22.28	Horizontal
5	16238.2897	35.71	18.13	53.84	74.00	-20.16	Horizontal
6	16909.2349	36.71	19.10	55.81	74.00	-18.19	Horizontal
7	17610.8518	36.74	18.64	55.38	74.00	-18.62	Horizontal

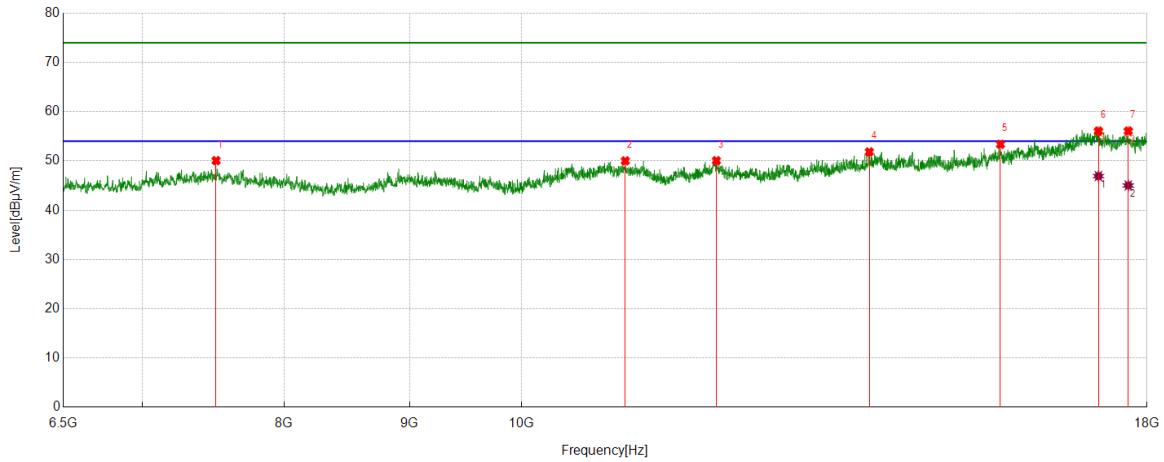
AV Result:

No.	Frequency	Reading Level	Correct Factor	Result	Limit	Margin	Remark
	[MHz]	[dBuV/m]	[dB]	[dBuV/m]	[dBuV/m]	[dB]	
1	16909.2349	25.88	19.10	44.98	54.00	-9.02	Horizontal
2	17610.8518	27.68	18.64	46.32	54.00	-7.68	Horizontal

- Remark: 1. Measurement = Reading Level + Correct Factor.  
 2. If Peak Result complies with AV limit, AV Result is deemed to comply with AV limit.  
 3. Test setup: RBW: 1 MHz, VBW: 3 MHz, Sweep time: auto.  
 4. Peak: Peak detector.  
 5. AVG: VBW refer to section 6.2.  
 6. For above 6.5GHz part, filter losses were only considered in the spurious frequency bands and the authorized band were not corrected for HPF losses. The proper operation of the transmitter prior to adding the filter to the measurement chain.  
 7. Only the worst case emission was recorded, if it complies with the limit, the other emissions deemed to comply with the limit.



Test Mode	Channel	Polarization	Verdict
11A	5500	Vertical	PASS



PK Result:

No.	Frequency	Reading Level	Correct Factor	Result	Limit	Margin	Remark
	[MHz]	[dBuV/m]	[dB]	[dBuV/m]	[dBuV/m]	[dB]	
1	7504.5008	40.62	9.44	50.06	74.00	-23.94	Vertical
2	11024.0873	37.22	12.80	50.02	74.00	-23.98	Vertical
3	12009.4182	36.71	13.34	50.05	74.00	-23.95	Vertical
4	13865.0608	37.59	14.24	51.83	74.00	-22.17	Vertical
5	15684.2807	37.06	16.31	53.37	74.00	-20.63	Vertical
6	17196.7828	36.34	19.65	55.99	74.00	-18.01	Vertical
7	17685.6143	37.49	18.56	56.05	74.00	-17.95	Vertical

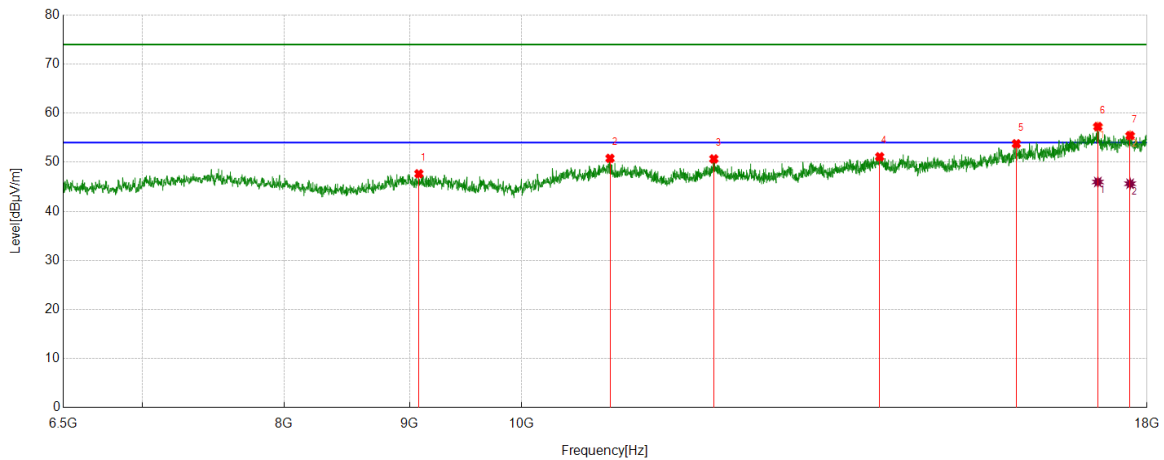
AV Result:

No.	Frequency	Reading Level	Correct Factor	Result	Limit	Margin	Remark
	[MHz]	[dBuV/m]	[dB]	[dBuV/m]	[dBuV/m]	[dB]	
1	17196.7828	27.27	19.65	46.92	54.00	-7.08	Vertical
2	17685.6143	26.46	18.56	45.02	54.00	-8.98	Vertical

- Remark: 1. Measurement = Reading Level + Correct Factor.  
 2. If Peak Result complies with AV limit, AV Result is deemed to comply with AV limit.  
 3. Test setup: RBW: 1 MHz, VBW: 3 MHz, Sweep time: auto.  
 4. Peak: Peak detector.  
 5. AVG: VBW refer to section 6.2.  
 6. For above 6.5GHz part, filter losses were only considered in the spurious frequency bands and the authorized band were not corrected for HPF losses. The proper operation of the transmitter prior to adding the filter to the measurement chain.  
 7. Only the worst case emission was recorded, if it complies with the limit, the other emissions deemed to comply with the limit.



Test Mode	Channel	Polarization	Verdict
11A	5520	Horizontal	PASS



PK Result:

No.	Frequency	Reading Level	Correct Factor	Result	Limit	Margin	Remark
	[MHz]	[dBuV/m]	[dB]	[dBuV/m]	[dBuV/m]	[dB]	
1	9080.2634	38.24	9.41	47.65	74.00	-26.35	Horizontal
2	10866.8945	37.98	12.81	50.79	74.00	-23.21	Horizontal
3	11980.6634	37.20	13.48	50.68	74.00	-23.32	Horizontal
4	14001.1669	35.91	15.21	51.12	74.00	-22.88	Horizontal
5	15920.07	36.79	16.97	53.76	74.00	-20.24	Horizontal
6	17187.1979	38.00	19.20	57.20	74.00	-16.80	Horizontal
7	17716.2860	36.42	19.01	55.43	74.00	-18.57	Horizontal

AV Result:

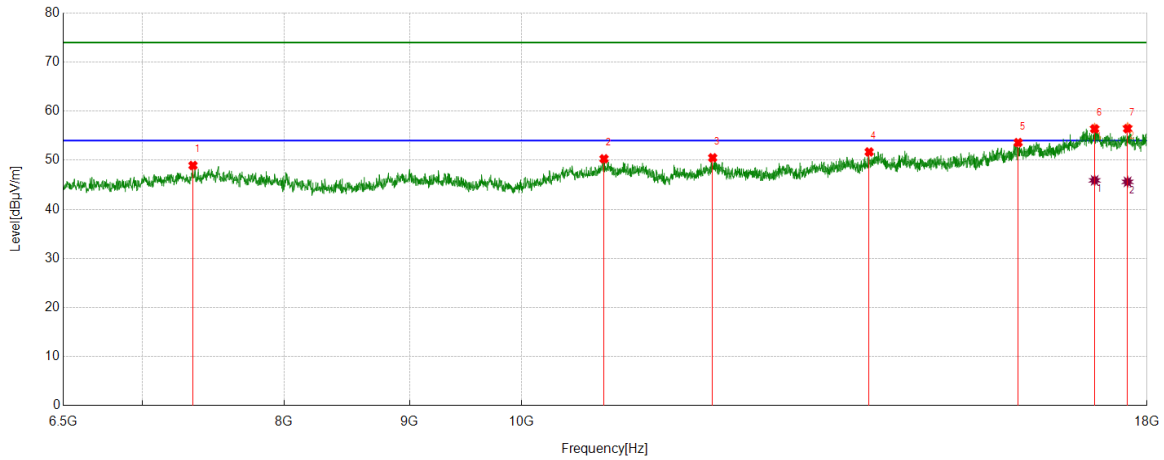
No.	Frequency	Reading Level	Correct Factor	Result	Limit	Margin	Remark
	[MHz]	[dBuV/m]	[dB]	[dBuV/m]	[dBuV/m]	[dB]	
1	17187.1979	26.78	19.20	45.98	54.00	-8.02	Horizontal
2	17716.2860	26.62	19.01	45.63	54.00	-8.37	Horizontal

- Remark: 1. Measurement = Reading Level + Correct Factor.  
 2. If Peak Result complies with AV limit, AV Result is deemed to comply with AV limit.  
 3. Test setup: RBW: 1 MHz, VBW: 3 MHz, Sweep time: auto.  
 4. Peak: Peak detector.  
 5. AVG: VBW refer to section 6.2.  
 6. For above 6.5GHz part, filter losses were only considered in the spurious frequency bands and the authorized band were not corrected for HPF losses. The proper operation of the transmitter prior to adding the filter to the measurement chain.  
 7. Only the worst case emission was recorded, if it complies with the limit, the other emissions deemed to comply with the limit.





Test Mode	Channel	Polarization	Verdict
11A	5520	Vertical	PASS



PK Result:

No.	Frequency	Reading Level	Correct Factor	Result	Limit	Margin	Remark
	[MHz]	[dBuV/m]	[dB]	[dBuV/m]	[dBuV/m]	[dB]	
1	7343.4739	39.37	9.56	48.93	74.00	-25.07	Vertical
2	10805.5509	37.81	12.48	50.29	74.00	-23.71	Vertical
3	11967.2445	37.28	13.22	50.50	74.00	-23.50	Vertical
4	13863.1439	37.49	14.20	51.69	74.00	-22.31	Vertical
5	15946.9078	37.10	16.50	53.60	74.00	-20.40	Vertical
6	17135.4392	37.36	19.13	56.49	74.00	-17.51	Vertical
7	17674.1124	37.69	19.00	56.69	74.00	-17.31	Vertical

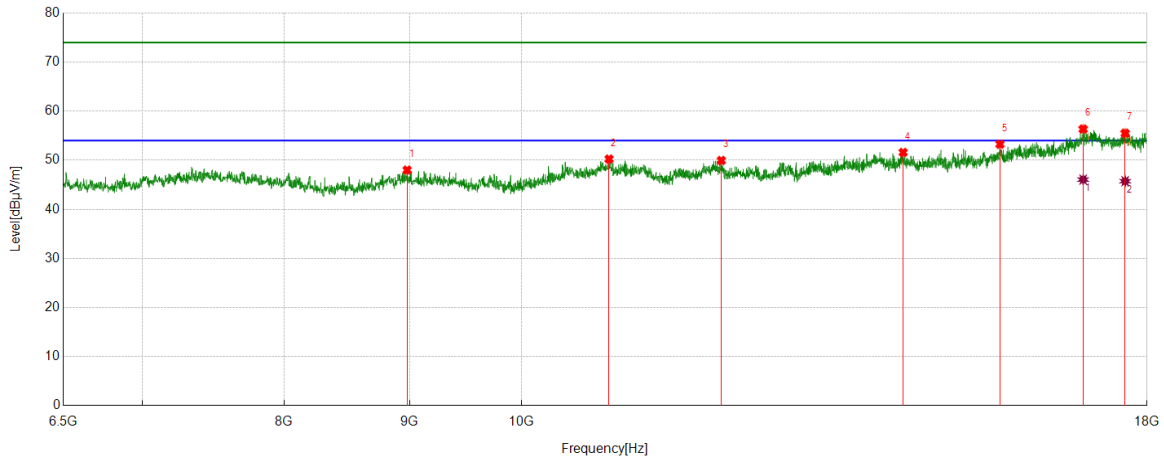
AV Result:

No.	Frequency	Reading Level	Correct Factor	Result	Limit	Margin	Remark
	[MHz]	[dBuV/m]	[dB]	[dBuV/m]	[dBuV/m]	[dB]	
1	17135.4392	26.77	19.13	45.90	54.00	-8.10	Vertical
2	17674.1124	26.60	19.00	45.60	54.00	-8.40	Vertical

- Remark: 1. Measurement = Reading Level + Correct Factor.  
 2. If Peak Result complies with AV limit, AV Result is deemed to comply with AV limit.  
 3. Test setup: RBW: 1 MHz, VBW: 3 MHz, Sweep time: auto.  
 4. Peak: Peak detector.  
 5. AVG: VBW refer to section 6.2.  
 6. For above 6.5GHz part, filter losses were only considered in the spurious frequency bands and the authorized band were not corrected for HPF losses. The proper operation of the transmitter prior to adding the filter to the measurement chain.  
 7. Only the worst case emission was recorded, if it complies with the limit, the other emissions deemed to comply with the limit.



Test Mode	Channel	Polarization	Verdict
11A	5600	Horizontal	PASS



PK Result:

No.	Frequency	Reading Level	Correct Factor	Result	Limit	Margin	Remark
	[MHz]	[dBuV/m]	[dB]	[dBuV/m]	[dBuV/m]	[dB]	
1	8980.5801	38.60	9.39	47.99	74.00	-26.01	Horizontal
2	10857.3096	37.44	12.80	50.24	74.00	-23.76	Horizontal
3	12065.0108	36.74	13.21	49.95	74.00	-24.05	Horizontal
4	14313.6356	37.10	14.49	51.59	74.00	-22.41	Horizontal
5	15676.6128	36.93	16.34	53.27	74.00	-20.73	Horizontal
6	16951.4086	36.89	19.48	56.37	74.00	-17.63	Horizontal
7	17633.8556	36.65	18.85	55.50	74.00	-18.50	Horizontal

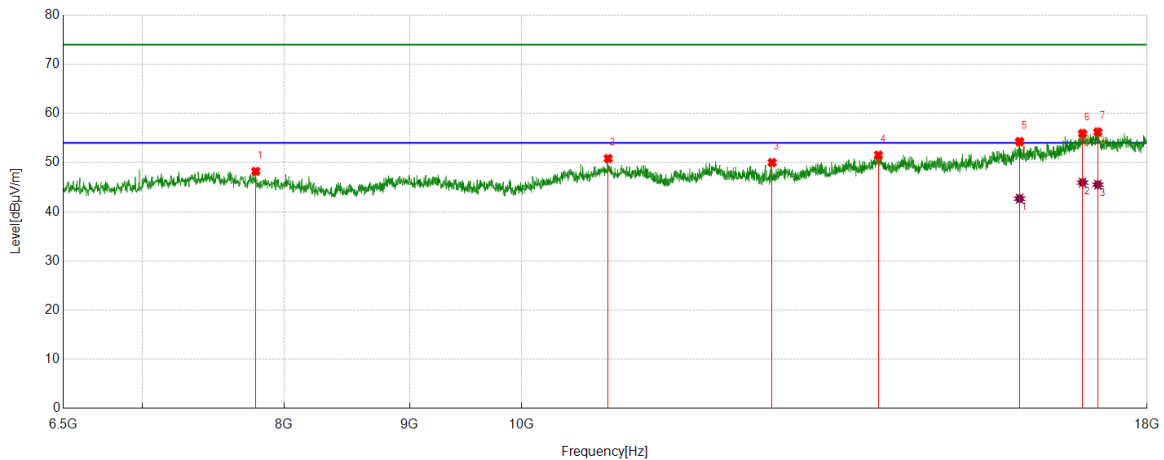
AV Result:

No.	Frequency	Reading Level	Correct Factor	Result	Limit	Margin	Remark
	[MHz]	[dBuV/m]	[dB]	[dBuV/m]	[dBuV/m]	[dB]	
1	16951.4086	26.58	19.48	46.06	54.00	-7.94	Horizontal
2	17633.8556	26.88	18.85	45.73	54.00	-8.27	Horizontal

- Remark: 1. Measurement = Reading Level + Correct Factor.  
 2. If Peak Result complies with AV limit, AV Result is deemed to comply with AV limit.  
 3. Test setup: RBW: 1 MHz, VBW: 3 MHz, Sweep time: auto.  
 4. Peak: Peak detector.  
 5. AVG: VBW refer to section 6.2.  
 6. For above 6.5GHz part, filter losses were only considered in the spurious frequency bands and the authorized band were not corrected for HPF losses. The proper operation of the transmitter prior to adding the filter to the measurement chain.  
 7. Only the worst case emission was recorded, if it complies with the limit, the other emissions deemed to comply with the limit.



Test Mode	Channel	Polarization	Verdict
11A	5600	Vertical	PASS



PK Result:

No.	Frequency	Reading Level	Correct Factor	Result	Limit	Margin	Remark
	[MHz]	[dBuV/m]	[dB]	[dBuV/m]	[dBuV/m]	[dB]	
1	7790.1317	39.44	8.78	48.22	74.00	-25.78	Vertical
2	10847.7246	38.22	12.61	50.83	74.00	-23.17	Vertical
3	12655.4426	37.91	12.10	50.01	74.00	-23.99	Vertical
4	13983.9140	36.78	14.74	51.52	74.00	-22.48	Vertical
5	15967.9947	38.30	15.98	54.28	74.00	-19.91	Vertical
6	16941.8236	36.32	19.54	55.86	74.00	-18.14	Vertical
7	17187.1979	37.02	19.20	56.22	74.00	-17.78	Vertical

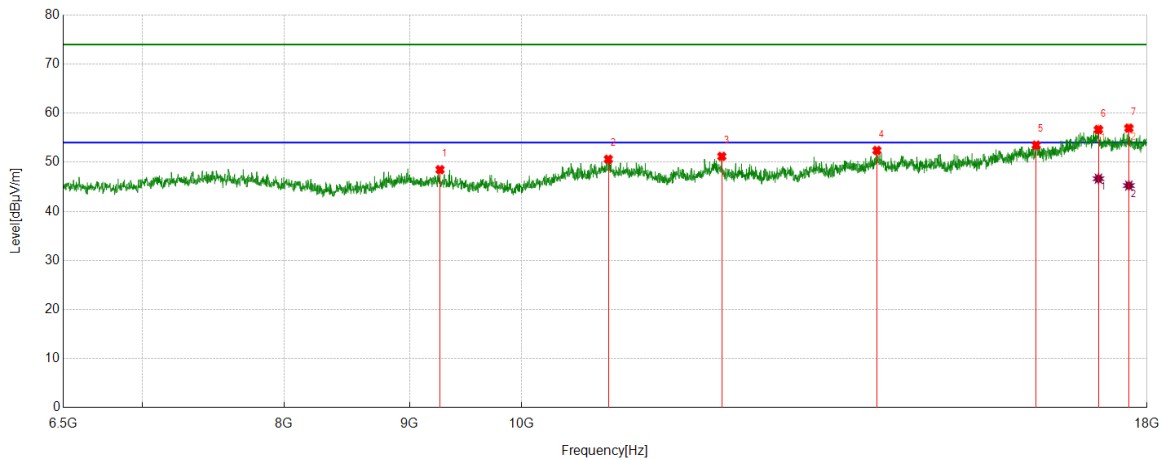
AV Result:

No.	Frequency	Reading Level	Correct Factor	Result	Limit	Margin	Remark
	[MHz]	[dBuV/m]	[dB]	[dBuV/m]	[dBuV/m]	[dB]	
1	15967.9947	26.69	15.98	42.67	54.00	-11.33	Vertical
2	16941.8236	26.40	19.54	45.94	54.00	-8.06	Vertical
3	17187.1979	26.32	19.20	45.52	54.00	-8.48	Vertical

- Remark: 1. Measurement = Reading Level + Correct Factor.  
 2. If Peak Result complies with AV limit, AV Result is deemed to comply with AV limit.  
 3. Test setup: RBW: 1 MHz, VBW: 3 MHz, Sweep time: auto.  
 4. Peak: Peak detector.  
 5. AVG: VBW refer to section 6.2.  
 6. For above 6.5GHz part, filter losses were only considered in the spurious frequency bands and the authorized band were not corrected for HPF losses. The proper operation of the transmitter prior to adding the filter to the measurement chain.  
 7. Only the worst case emission was recorded, if it complies with the limit, the other emissions deemed to comply with the limit.



Test Mode	Channel	Polarization	Verdict
11A	5680	Horizontal	PASS



PK Result:

No.	Frequency	Reading Level	Correct Factor	Result	Limit	Margin	Remark
	[MHz]	[dBuV/m]	[dB]	[dBuV/m]	[dBuV/m]	[dB]	
1	9262.3771	39.24	9.25	48.49	74.00	-25.51	Horizontal
2	10849.6416	38.03	12.58	50.61	74.00	-23.39	Horizontal
3	12070.7618	37.93	13.26	51.19	74.00	-22.81	Horizontal
4	13964.7441	37.83	14.57	52.40	74.00	-21.60	Horizontal
5	16219.1199	36.12	17.36	53.48	74.00	-20.52	Horizontal
6	17196.7828	36.97	19.65	56.62	74.00	-17.38	Horizontal
7	17695.1992	38.29	18.59	56.88	74.00	-17.12	Horizontal

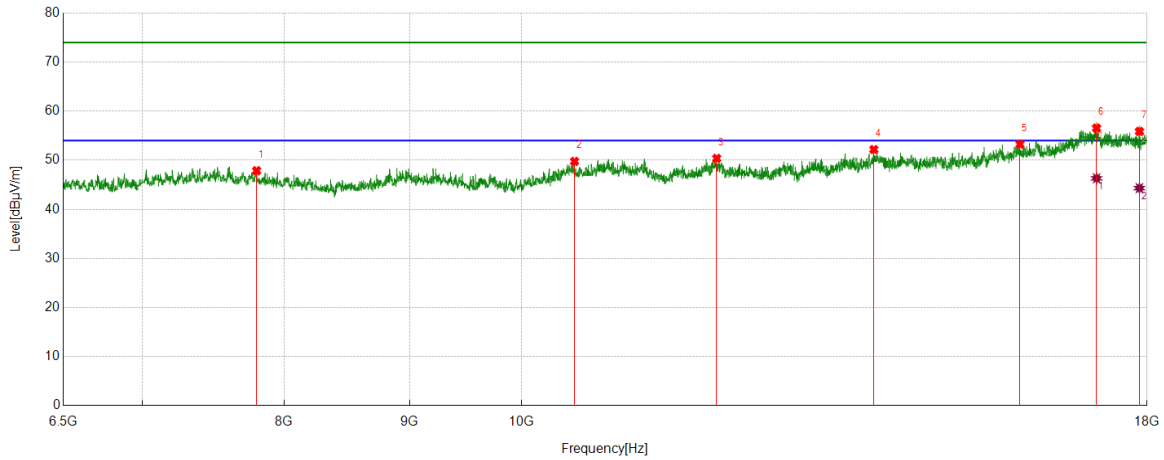
AV Result:

No.	Frequency	Reading Level	Correct Factor	Result	Limit	Margin	Remark
	[MHz]	[dBuV/m]	[dB]	[dBuV/m]	[dBuV/m]	[dB]	
1	17196.7828	27.00	19.65	46.65	54.00	-7.35	Horizontal
2	17695.1992	26.66	18.59	45.25	54.00	-8.75	Horizontal

- Remark: 1. Measurement = Reading Level + Correct Factor.  
 2. If Peak Result complies with AV limit, AV Result is deemed to comply with AV limit.  
 3. Test setup: RBW: 1 MHz, VBW: 3 MHz, Sweep time: auto.  
 4. Peak: Peak detector.  
 5. AVG: VBW refer to section 6.2.  
 6. For above 6.5GHz part, filter losses were only considered in the spurious frequency bands and the authorized band were not corrected for HPF losses. The proper operation of the transmitter prior to adding the filter to the measurement chain.  
 7. Only the worst case emission was recorded, if it complies with the limit, the other emissions deemed to comply with the limit.



Test Mode	Channel	Polarization	Verdict
11A	5680	Vertical	PASS



PK Result:

No.	Frequency	Reading Level	Correct Factor	Result	Limit	Margin	Remark
	[MHz]	[dBuV/m]	[dB]	[dBuV/m]	[dBuV/m]	[dB]	
1	7795.8826	39.12	8.75	47.87	74.00	-26.13	Vertical
2	10510.3351	37.42	12.34	49.76	74.00	-24.24	Vertical
3	12013.2522	37.05	13.33	50.38	74.00	-23.62	Vertical
4	13924.4874	37.36	14.82	52.18	74.00	-21.82	Vertical
5	15973.7456	37.19	16.07	53.26	74.00	-20.74	Vertical
6	17166.1110	37.03	19.64	56.67	74.00	-17.33	Vertical
7	17871.5619	37.63	18.33	55.96	74.00	-18.04	Vertical

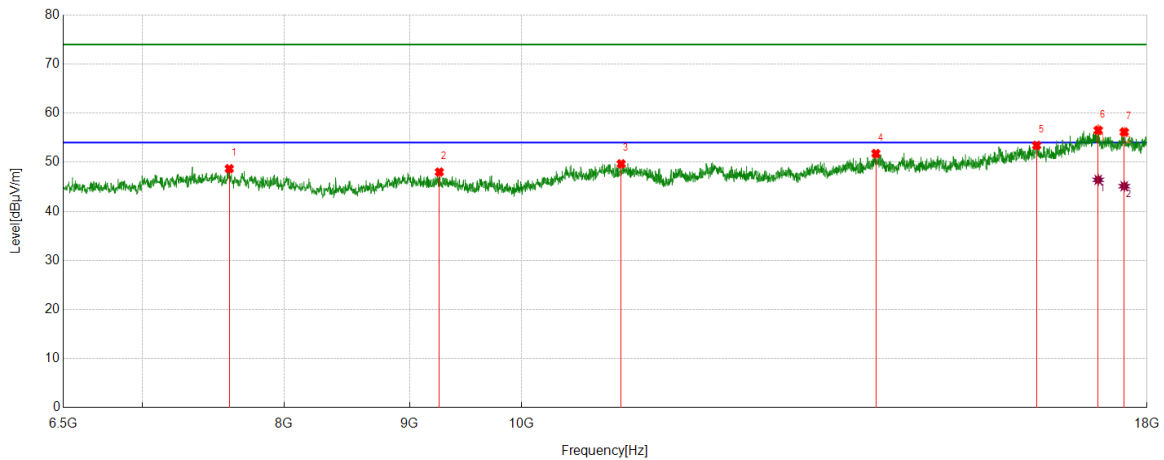
AV Result:

No.	Frequency	Reading Level	Correct Factor	Result	Limit	Margin	Remark
	[MHz]	[dBuV/m]	[dB]	[dBuV/m]	[dBuV/m]	[dB]	
1	17166.1110	26.67	19.64	46.31	54.00	-7.69	Vertical
2	17871.5619	25.99	18.33	44.32	54.00	-9.68	Vertical

- Remark: 1. Measurement = Reading Level + Correct Factor.  
 2. If Peak Result complies with AV limit, AV Result is deemed to comply with AV limit.  
 3. Test setup: RBW: 1 MHz, VBW: 3 MHz, Sweep time: auto.  
 4. Peak: Peak detector.  
 5. AVG: VBW refer to section 6.2.  
 6. For above 6.5GHz part, filter losses were only considered in the spurious frequency bands and the authorized band were not corrected for HPF losses. The proper operation of the transmitter prior to adding the filter to the measurement chain.  
 7. Only the worst case emission was recorded, if it complies with the limit, the other emissions deemed to comply with the limit.



Test Mode	Channel	Polarization	Verdict
11A	5700	Horizontal	PASS



PK Result:

No.	Frequency	Reading Level	Correct Factor	Result	Limit	Margin	Remark
	[MHz]	[dBuV/m]	[dB]	[dBuV/m]	[dBuV/m]	[dB]	
1	7598.4331	39.01	9.67	48.68	74.00	-25.32	Horizontal
2	9256.6261	38.72	9.28	48.00	74.00	-26.00	Horizontal
3	10981.9137	36.74	12.93	49.67	74.00	-24.33	Horizontal
4	13951.3252	37.15	14.62	51.77	74.00	-22.23	Horizontal
5	16226.7878	35.54	17.89	53.43	74.00	-20.57	Horizontal
6	17192.9488	37.31	19.41	56.72	74.00	-17.28	Horizontal
7	17618.5198	37.77	18.37	56.14	74.00	-17.86	Horizontal

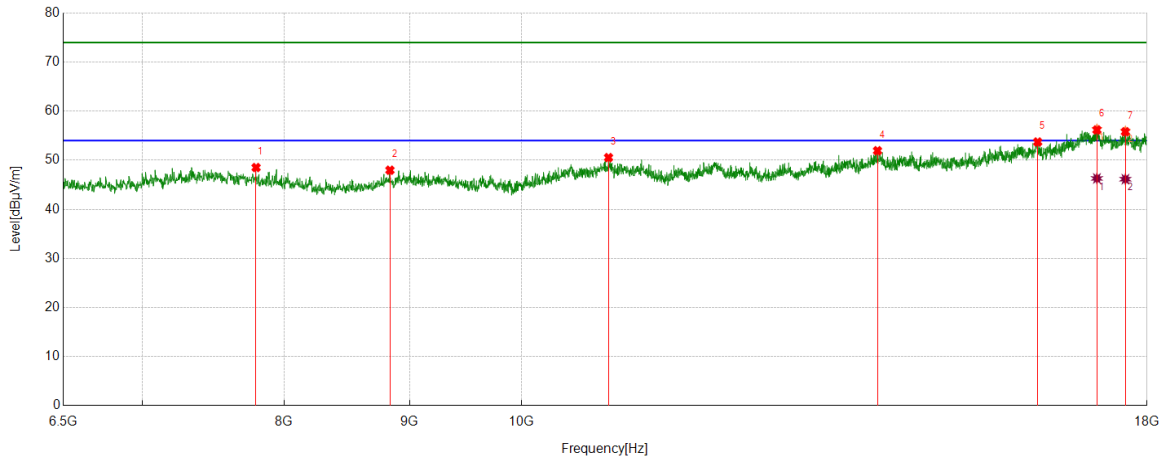
AV Result:

No.	Frequency	Reading Level	Correct Factor	Result	Limit	Margin	Remark
	[MHz]	[dBuV/m]	[dB]	[dBuV/m]	[dBuV/m]	[dB]	
1	17192.9488	27.01	19.41	46.42	54.00	-7.58	Horizontal
2	17618.5198	26.75	18.37	45.12	54.00	-8.88	Horizontal

- Remark: 1. Measurement = Reading Level + Correct Factor.  
 2. If Peak Result complies with AV limit, AV Result is deemed to comply with AV limit.  
 3. Test setup: RBW: 1 MHz, VBW: 3 MHz, Sweep time: auto.  
 4. Peak: Peak detector.  
 5. AVG: VBW refer to section 6.2.  
 6. For above 6.5GHz part, filter losses were only considered in the spurious frequency bands and the authorized band were not corrected for HPF losses. The proper operation of the transmitter prior to adding the filter to the measurement chain.  
 7. Only the worst case emission was recorded, if it complies with the limit, the other emissions deemed to comply with the limit.



Test Mode	Channel	Polarization	Verdict
11A	5700	Vertical	PASS



PK Result:

No.	Frequency	Reading Level	Correct Factor	Result	Limit	Margin	Remark
	[MHz]	[dBuV/m]	[dB]	[dBuV/m]	[dBuV/m]	[dB]	
1	7792.0487	39.74	8.77	48.51	74.00	-25.49	Vertical
2	8836.8061	38.98	8.99	47.97	74.00	-26.03	Vertical
3	10851.5586	37.92	12.62	50.54	74.00	-23.46	Vertical
4	13972.4121	37.31	14.63	51.94	74.00	-22.06	Vertical
5	16242.1237	35.81	17.91	53.72	74.00	-20.28	Vertical
6	17171.8620	36.96	19.38	56.34	74.00	-17.66	Vertical
7	17637.6896	37.26	18.67	55.93	74.00	-18.07	Vertical

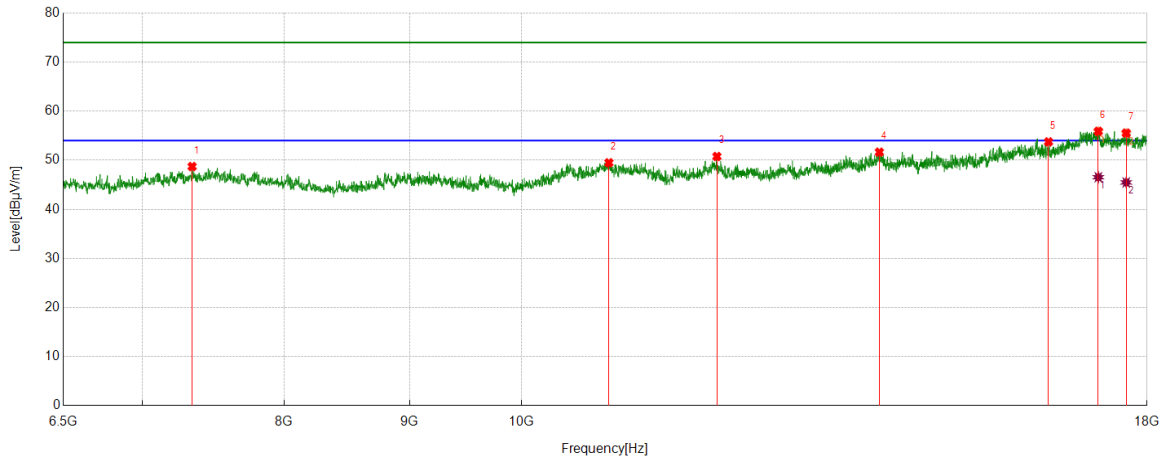
AV Result:

No.	Frequency	Reading Level	Correct Factor	Result	Limit	Margin	Remark
	[MHz]	[dBuV/m]	[dB]	[dBuV/m]	[dBuV/m]	[dB]	
1	17171.8620	26.91	19.38	46.29	54.00	-7.71	Vertical
2	17637.6896	27.47	18.67	46.14	54.00	-7.86	Vertical

- Remark: 1. Measurement = Reading Level + Correct Factor.  
 2. If Peak Result complies with AV limit, AV Result is deemed to comply with AV limit.  
 3. Test setup: RBW: 1 MHz, VBW: 3 MHz, Sweep time: auto.  
 4. Peak: Peak detector.  
 5. AVG: VBW refer to section 6.2.  
 6. For above 6.5GHz part, filter losses were only considered in the spurious frequency bands and the authorized band were not corrected for HPF losses. The proper operation of the transmitter prior to adding the filter to the measurement chain.  
 7. Only the worst case emission was recorded, if it complies with the limit, the other emissions deemed to comply with the limit.



Test Mode	Channel	Polarization	Verdict
11A	5720	Horizontal	PASS



PK Result:

No.	Frequency	Reading Level	Correct Factor	Result	Limit	Margin	Remark
	[MHz]	[dBuV/m]	[dB]	[dBuV/m]	[dBuV/m]	[dB]	
1	7337.723	39.15	9.57	48.72	74.00	-25.28	Horizontal
2	10855.3926	36.75	12.74	49.49	74.00	-24.51	Horizontal
3	12015.1692	37.44	13.33	50.77	74.00	-23.23	Horizontal
4	13997.3329	36.51	15.14	51.65	74.00	-22.35	Horizontal
5	16408.9015	37.35	16.40	53.75	74.00	-20.25	Horizontal
6	17194.8658	36.31	19.53	55.84	74.00	-18.16	Horizontal
7	17651.1085	37.04	18.41	55.45	74.00	-18.55	Horizontal

AV Result:

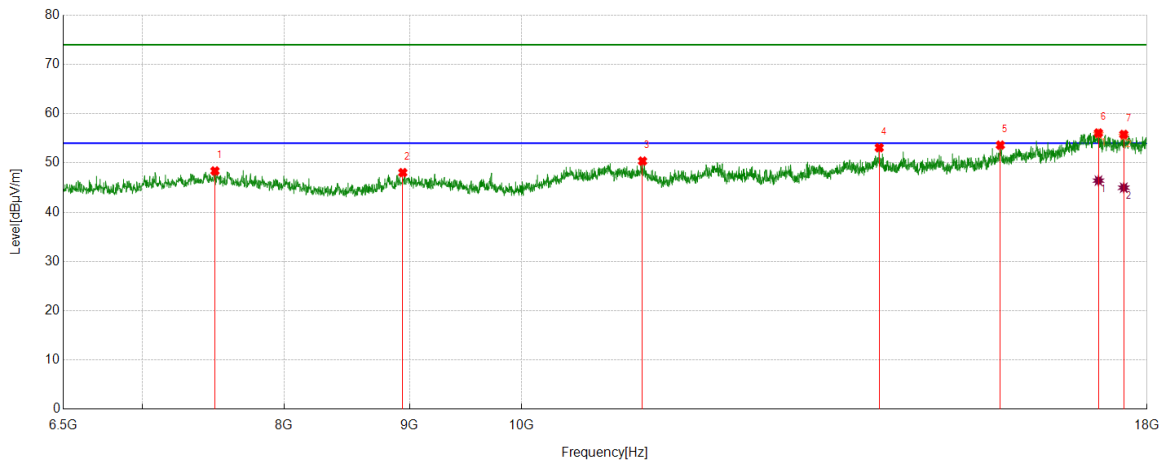
No.	Frequency	Reading Level	Correct Factor	Result	Limit	Margin	Remark
	[MHz]	[dBuV/m]	[dB]	[dBuV/m]	[dBuV/m]	[dB]	
1	17194.8658	27.01	19.53	46.54	54.00	-7.46	Horizontal
2	17651.1085	27.07	18.41	45.48	54.00	-8.52	Horizontal

- Remark: 1. Measurement = Reading Level + Correct Factor.  
 2. If Peak Result complies with AV limit, AV Result is deemed to comply with AV limit.  
 3. Test setup: RBW: 1 MHz, VBW: 3 MHz, Sweep time: auto.  
 4. Peak: Peak detector.  
 5. AVG: VBW refer to section 6.2.  
 6. For above 6.5GHz part, filter losses were only considered in the spurious frequency bands and the authorized band were not corrected for HPF losses. The proper operation of the transmitter prior to adding the filter to the measurement chain.  
 7. Only the worst case emission was recorded, if it complies with the limit, the other emissions deemed to comply with the limit.





Test Mode	Channel	Polarization	Verdict
11A	5720	Vertical	PASS



PK Result:

No.	Frequency	Reading Level	Correct Factor	Result	Limit	Margin	Remark
	[MHz]	[dBuV/m]	[dB]	[dBuV/m]	[dBuV/m]	[dB]	
1	7496.8328	38.92	9.45	48.37	74.00	-25.63	Vertical
2	8944.1574	38.55	9.48	48.03	74.00	-25.97	Vertical
3	11204.284	38.00	12.37	50.37	74.00	-23.63	Vertical
4	13995.4159	38.00	15.09	53.09	74.00	-20.91	Vertical
5	15682.3637	37.37	16.24	53.61	74.00	-20.39	Vertical
6	17196.7828	36.19	19.65	55.84	74.00	-18.16	Vertical
7	17610.8518	36.87	18.64	55.51	74.00	-18.49	Vertical

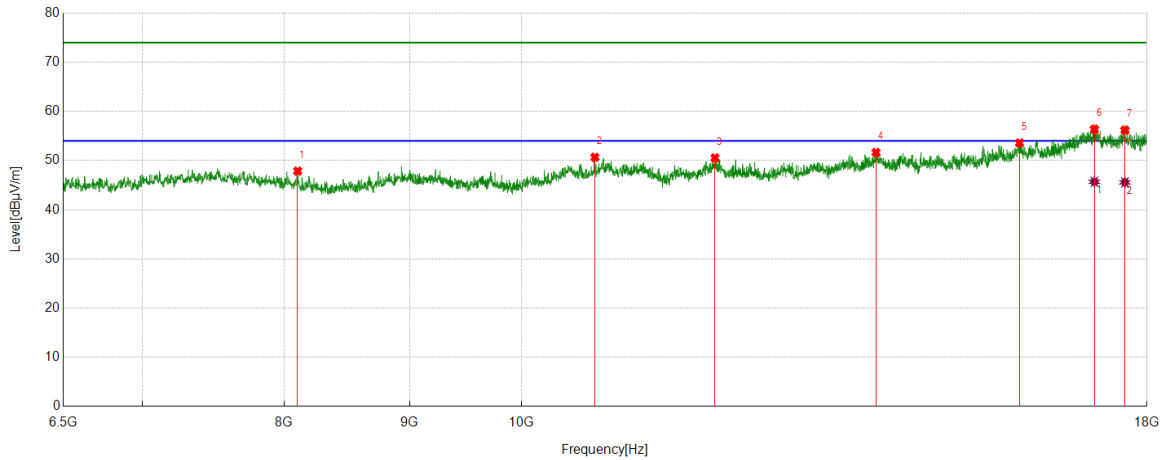
AV Result:

No.	Frequency	Reading Level	Correct Factor	Result	Limit	Margin	Remark
	[MHz]	[dBuV/m]	[dB]	[dBuV/m]	[dBuV/m]	[dB]	
1	17196.7828	26.76	19.65	46.41	54.00	-7.59	Vertical
2	17610.8518	26.33	18.64	44.97	54.00	-9.03	Vertical

- Remark: 1. Measurement = Reading Level + Correct Factor.  
 2. If Peak Result complies with AV limit, AV Result is deemed to comply with AV limit.  
 3. Test setup: RBW: 1 MHz, VBW: 3 MHz, Sweep time: auto.  
 4. Peak: Peak detector.  
 5. AVG: VBW refer to section 6.2.  
 6. For above 6.5GHz part, filter losses were only considered in the spurious frequency bands and the authorized band were not corrected for HPF losses. The proper operation of the transmitter prior to adding the filter to the measurement chain.  
 7. Only the worst case emission was recorded, if it complies with the limit, the other emissions deemed to comply with the limit.



Test Mode	Channel	Polarization	Verdict
11A	5745	Horizontal	PASS



PK Result:

No.	Frequency	Reading Level	Correct Factor	Result	Limit	Margin	Remark
	[MHz]	[dBuV/m]	[dB]	[dBuV/m]	[dBuV/m]	[dB]	
1	8102.6004	39.61	8.25	47.86	74.00	-26.14	Horizontal
2	10713.5356	38.23	12.44	50.67	74.00	-23.33	Horizontal
3	11994.0823	37.01	13.53	50.54	74.00	-23.46	Horizontal
4	13953.2422	37.05	14.60	51.65	74.00	-22.35	Horizontal
5	15967.9947	37.59	15.98	53.57	74.00	-20.43	Horizontal
6	17131.6053	37.37	19.03	56.40	74.00	-17.60	Horizontal
7	17630.0217	37.16	19.02	56.18	74.00	-17.82	Horizontal

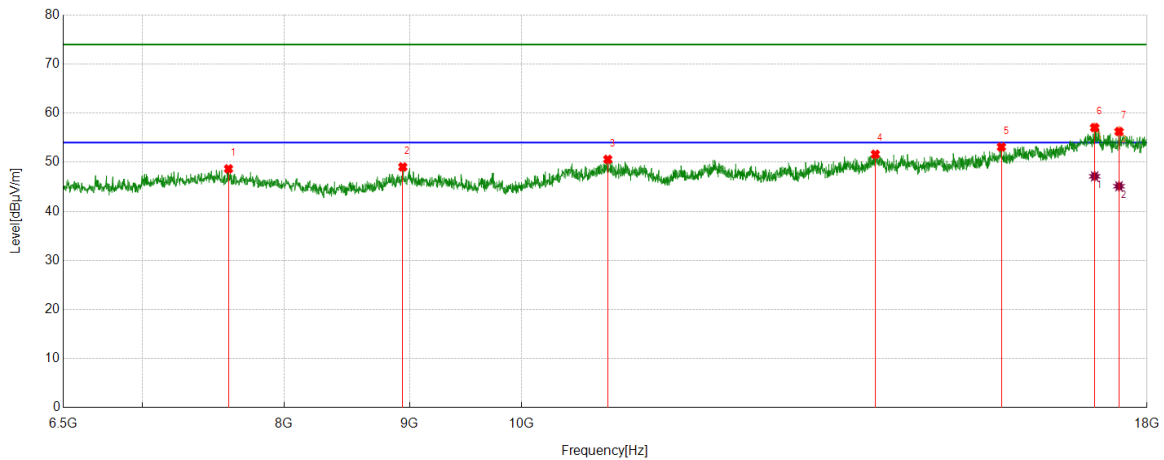
AV Result:

No.	Frequency	Reading Level	Correct Factor	Result	Limit	Margin	Remark
	[MHz]	[dBuV/m]	[dB]	[dBuV/m]	[dBuV/m]	[dB]	
1	17131.6053	26.67	19.03	45.70	54.00	-8.30	Horizontal
2	17630.0217	26.55	19.02	45.57	54.00	-8.43	Horizontal

- Remark: 1. Measurement = Reading Level + Correct Factor.  
 2. If Peak Result complies with AV limit, AV Result is deemed to comply with AV limit.  
 3. Test setup: RBW: 1 MHz, VBW: 3 MHz, Sweep time: auto.  
 4. Peak: Peak detector.  
 5. AVG: VBW refer to section 6.2.  
 6. For above 6.5GHz part, filter losses were only considered in the spurious frequency bands and the authorized band were not corrected for HPF losses. The proper operation of the transmitter prior to adding the filter to the measurement chain.  
 7. Only the worst case emission was recorded, if it complies with the limit, the other emissions deemed to comply with the limit.



Test Mode	Channel	Polarization	Verdict
11A	5745	Vertical	PASS



PK Result:

No.	Frequency	Reading Level	Correct Factor	Result	Limit	Margin	Remark
	[MHz]	[dBuV/m]	[dB]	[dBuV/m]	[dBuV/m]	[dB]	
1	7592.6821	38.94	9.72	48.66	74.00	-25.34	Vertical
2	8944.1574	39.56	9.48	49.04	74.00	-24.96	Vertical
3	10843.8906	37.92	12.66	50.58	74.00	-23.42	Vertical
4	13943.6573	36.69	14.93	51.62	74.00	-22.38	Vertical
5	15697.6996	36.74	16.37	53.11	74.00	-20.89	Vertical
6	17135.4392	37.9	19.13	57.03	74.00	-16.97	Vertical
7	17532.2554	38.01	18.27	56.28	74.00	-17.72	Vertical

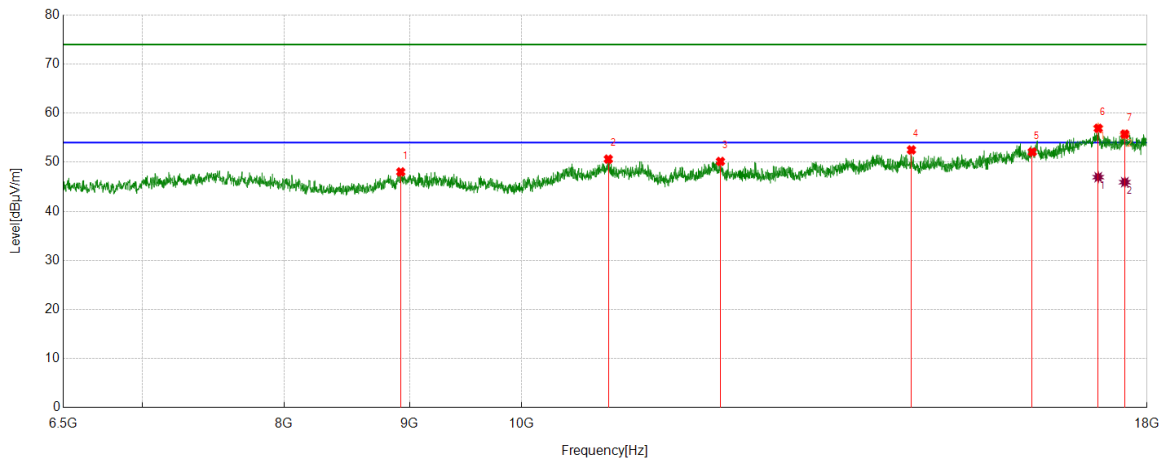
AV Result:

No.	Frequency	Reading Level	Correct Factor	Result	Limit	Margin	Remark
	[MHz]	[dBuV/m]	[dB]	[dBuV/m]	[dBuV/m]	[dB]	
1	17135.4392	28.00	19.13	47.13	54.00	-6.87	Vertical
2	17532.2554	26.84	18.27	45.11	54.00	-8.89	Vertical

- Remark: 1. Measurement = Reading Level + Correct Factor.  
 2. If Peak Result complies with AV limit, AV Result is deemed to comply with AV limit.  
 3. Test setup: RBW: 1 MHz, VBW: 3 MHz, Sweep time: auto.  
 4. Peak: Peak detector.  
 5. AVG: VBW refer to section 6.2.  
 6. For above 6.5GHz part, filter losses were only considered in the spurious frequency bands and the authorized band were not corrected for HPF losses. The proper operation of the transmitter prior to adding the filter to the measurement chain.  
 7. Only the worst case emission was recorded, if it complies with the limit, the other emissions deemed to comply with the limit.



Test Mode	Channel	Polarization	Verdict
11A	5785	Horizontal	PASS



PK Result:

No.	Frequency	Reading Level	Correct Factor	Result	Limit	Margin	Remark
	[MHz]	[dBuV/m]	[dB]	[dBuV/m]	[dBuV/m]	[dB]	
1	8926.9045	38.68	9.35	48.03	74.00	-25.97	Horizontal
2	10849.6416	38.05	12.58	50.63	74.00	-23.37	Horizontal
3	12055.4259	37.04	13.12	50.16	74.00	-23.84	Horizontal
4	14424.8208	38.11	14.40	52.51	74.00	-21.49	Horizontal
5	16159.6933	36.22	15.88	52.10	74.00	-20.57	Horizontal
6	17192.9488	37.54	19.41	56.95	74.00	-17.05	Horizontal
7	17628.1047	36.64	18.89	55.53	74.00	-18.47	Horizontal

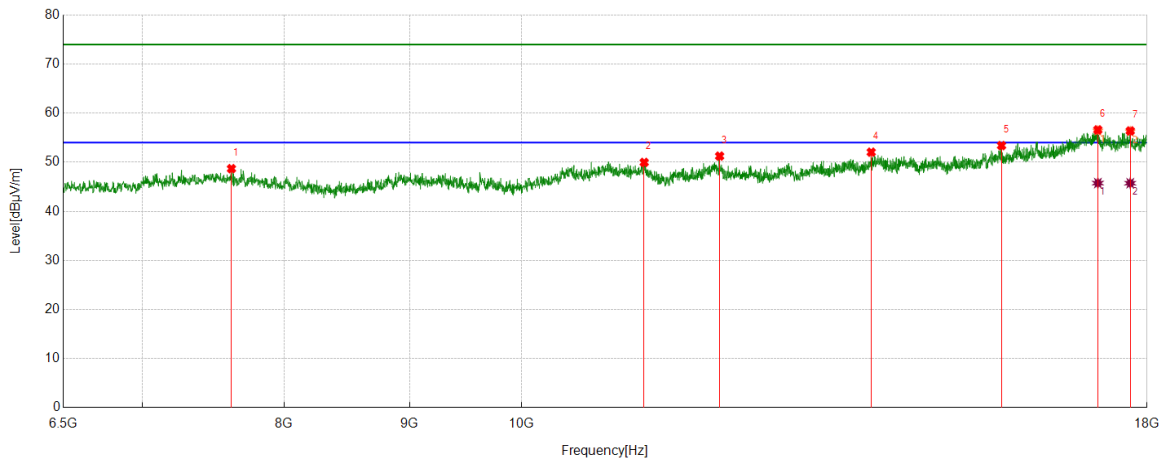
AV Result:

No.	Frequency	Reading Level	Correct Factor	Result	Limit	Margin	Remark
	[MHz]	[dBuV/m]	[dB]	[dBuV/m]	[dBuV/m]	[dB]	
1	17192.9488	27.55	19.41	46.96	54.00	-7.04	Horizontal
2	17628.1047	27.05	18.89	45.94	54.00	-8.06	Horizontal

- Remark: 1. Measurement = Reading Level + Correct Factor.  
 2. If Peak Result complies with AV limit, AV Result is deemed to comply with AV limit.  
 3. Test setup: RBW: 1 MHz, VBW: 3 MHz, Sweep time: auto.  
 4. Peak: Peak detector.  
 5. AVG: VBW refer to section 6.2.  
 6. For above 6.5GHz part, filter losses were only considered in the spurious frequency bands and the authorized band were not corrected for HPF losses. The proper operation of the transmitter prior to adding the filter to the measurement chain.  
 7. Only the worst case emission was recorded, if it complies with the limit, the other emissions deemed to comply with the limit.



Test Mode	Channel	Polarization	Verdict
11A	5785	Vertical	PASS



PK Result:

No.	Frequency	Reading Level	Correct Factor	Result	Limit	Margin	Remark
	[MHz]	[dBuV/m]	[dB]	[dBuV/m]	[dBuV/m]	[dB]	
1	7613.769	39.37	9.32	48.69	74.00	-25.31	Vertical
2	11221.5369	37.74	12.23	49.97	74.00	-24.03	Vertical
3	12045.841	38.18	13.07	51.25	74.00	-22.75	Vertical
4	13889.9817	37.66	14.39	52.05	74.00	-21.95	Vertical
5	15699.6166	37.05	16.35	53.40	74.00	-20.60	Vertical
6	17187.1979	37.2	19.20	56.40	74.00	-17.60	Vertical
7	17718.2030	37.18	19.06	56.24	74.00	-17.76	Vertical

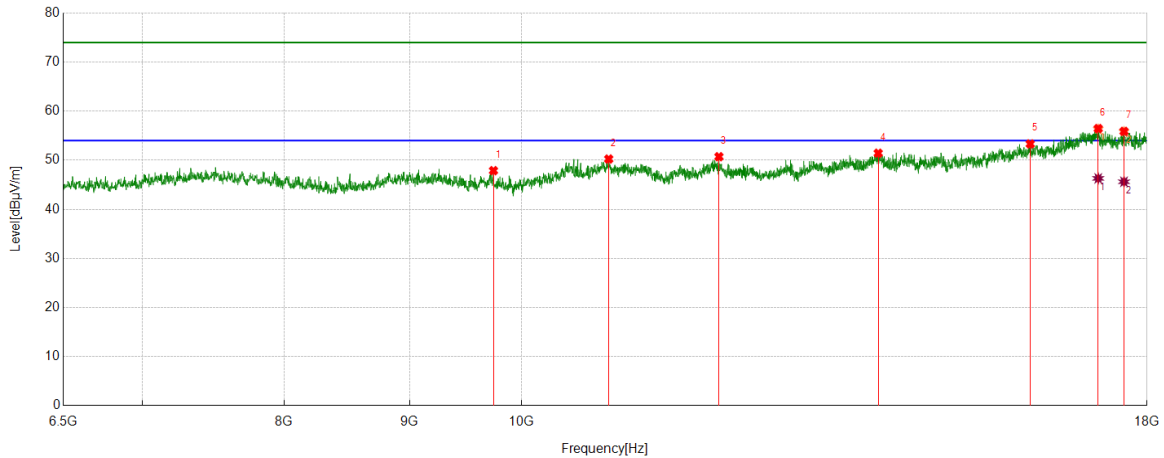
AV Result:

No.	Frequency	Reading Level	Correct Factor	Result	Limit	Margin	Remark
	[MHz]	[dBuV/m]	[dB]	[dBuV/m]	[dBuV/m]	[dB]	
1	17187.1979	26.55	19.20	45.75	54.00	-8.25	Vertical
2	17718.2030	26.67	19.06	45.73	54.00	-8.27	Vertical

- Remark: 1. Measurement = Reading Level + Correct Factor.  
 2. If Peak Result complies with AV limit, AV Result is deemed to comply with AV limit.  
 3. Test setup: RBW: 1 MHz, VBW: 3 MHz, Sweep time: auto.  
 4. Peak: Peak detector.  
 5. AVG: VBW refer to section 6.2.  
 6. For above 6.5GHz part, filter losses were only considered in the spurious frequency bands and the authorized band were not corrected for HPF losses. The proper operation of the transmitter prior to adding the filter to the measurement chain.  
 7. Only the worst case emission was recorded, if it complies with the limit, the other emissions deemed to comply with the limit.



Test Mode	Channel	Polarization	Verdict
11A	5825	Horizontal	PASS



PK Result:

No.	Frequency	Reading Level	Correct Factor	Result	Limit	Margin	Remark
	[MHz]	[dBuV/m]	[dB]	[dBuV/m]	[dBuV/m]	[dB]	
1	9739.7066	38.71	9.17	47.88	74.00	-26.12	Horizontal
2	10853.4756	37.57	12.68	50.25	74.00	-23.75	Horizontal
3	12038.173	37.65	13.07	50.72	74.00	-23.28	Horizontal
4	13981.997	36.75	14.68	51.43	74.00	-22.57	Horizontal
5	16129.0215	36.99	16.33	53.32	74.00	-20.68	Horizontal
6	17192.9488	36.94	19.41	56.35	74.00	-17.65	Horizontal
7	17614.6858	37.34	18.50	55.84	74.00	-18.16	Horizontal

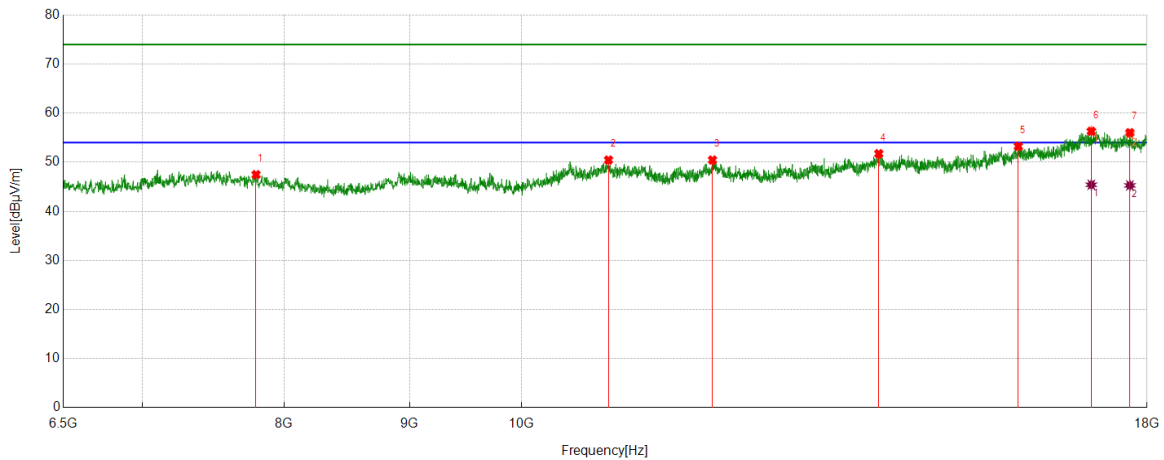
AV Result:

No.	Frequency	Reading Level	Correct Factor	Result	Limit	Margin	Remark
	[MHz]	[dBuV/m]	[dB]	[dBuV/m]	[dBuV/m]	[dB]	
1	17192.9488	26.89	19.41	46.30	54.00	-7.70	Horizontal
2	17614.6858	27.12	18.50	45.62	54.00	-8.38	Horizontal

- Remark: 1. Measurement = Reading Level + Correct Factor.  
 2. If Peak Result complies with AV limit, AV Result is deemed to comply with AV limit.  
 3. Test setup: RBW: 1 MHz, VBW: 3 MHz, Sweep time: auto.  
 4. Peak: Peak detector.  
 5. AVG: VBW refer to section 6.2.  
 6. For above 6.5GHz part, filter losses were only considered in the spurious frequency bands and the authorized band were not corrected for HPF losses. The proper operation of the transmitter prior to adding the filter to the measurement chain.  
 7. Only the worst case emission was recorded, if it complies with the limit, the other emissions deemed to comply with the limit.



Test Mode	Channel	Polarization	Verdict
11A	5825	Vertical	PASS



PK Result:

No.	Frequency	Reading Level	Correct Factor	Result	Limit	Margin	Remark
	[MHz]	[dBuV/m]	[dB]	[dBuV/m]	[dBuV/m]	[dB]	
1	7792.0487	38.70	8.77	47.47	74.00	-26.53	Vertical
2	10851.5586	37.83	12.62	50.45	74.00	-23.55	Vertical
3	11965.3276	37.25	13.20	50.45	74.00	-23.55	Vertical
4	13989.6649	36.82	14.92	51.74	74.00	-22.26	Vertical
5	15948.8248	36.75	16.50	53.25	74.00	-20.75	Vertical
6	17081.7636	37.19	19.17	56.36	74.00	-17.64	Vertical
7	17712.4521	36.86	18.90	55.76	74.00	-18.24	Vertical

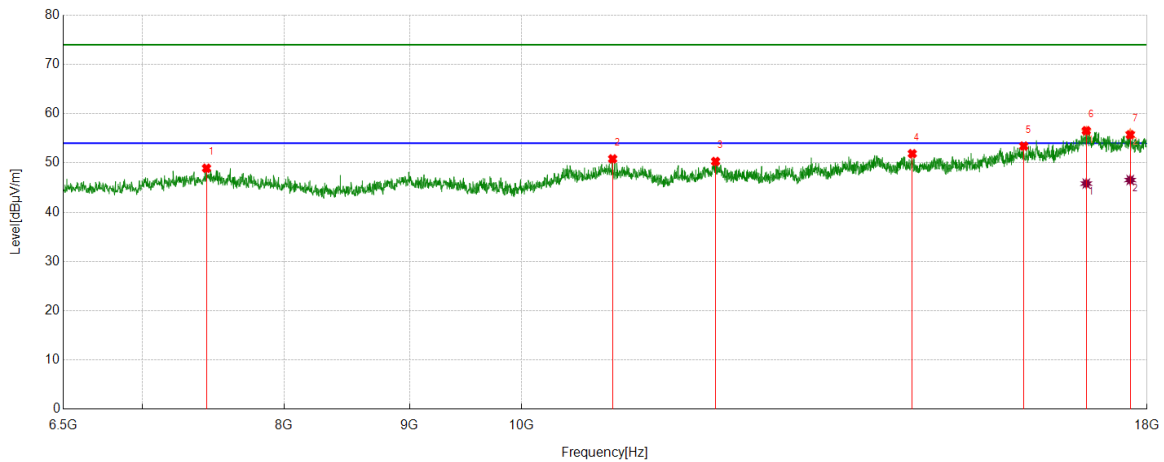
AV Result:

No.	Frequency	Reading Level	Correct Factor	Result	Limit	Margin	Remark
	[MHz]	[dBuV/m]	[dB]	[dBuV/m]	[dBuV/m]	[dB]	
1	17081.7636	26.24	19.17	45.41	54.00	-8.59	Vertical
2	17712.4521	26.38	18.90	45.28	54.00	-8.72	Vertical

- Remark: 1. Measurement = Reading Level + Correct Factor.  
 2. If Peak Result complies with AV limit, AV Result is deemed to comply with AV limit.  
 3. Test setup: RBW: 1 MHz, VBW: 3 MHz, Sweep time: auto.  
 4. Peak: Peak detector.  
 5. AVG: VBW refer to section 6.2.  
 6. For above 6.5GHz part, filter losses were only considered in the spurious frequency bands and the authorized band were not corrected for HPF losses. The proper operation of the transmitter prior to adding the filter to the measurement chain.  
 7. Only the worst case emission was recorded, if it complies with the limit, the other emissions deemed to comply with the limit.



Test Mode	Channel	Polarization	Verdict
11AC20	5180	Horizontal	PASS



PK Result:

No.	Frequency	Reading Level	Correct Factor	Result	Limit	Margin	Remark
	[MHz]	[dBuV/m]	[dB]	[dBuV/m]	[dBuV/m]	[dB]	
1	7437.4062	39.53	9.39	48.92	74.00	-25.08	Horizontal
2	10893.7323	38.31	12.51	50.82	74.00	-23.18	Horizontal
3	11999.8333	36.87	13.43	50.30	74.00	-23.70	Horizontal
4	14436.3227	37.45	14.43	51.88	74.00	-22.12	Horizontal
5	16031.2552	37.63	15.79	53.42	74.00	-20.58	Horizontal
6	17001.2502	37.31	19.12	56.43	74.00	-17.57	Horizontal
7	17718.2030	36.89	19.06	55.95	74.00	-18.05	Horizontal

AV Result:

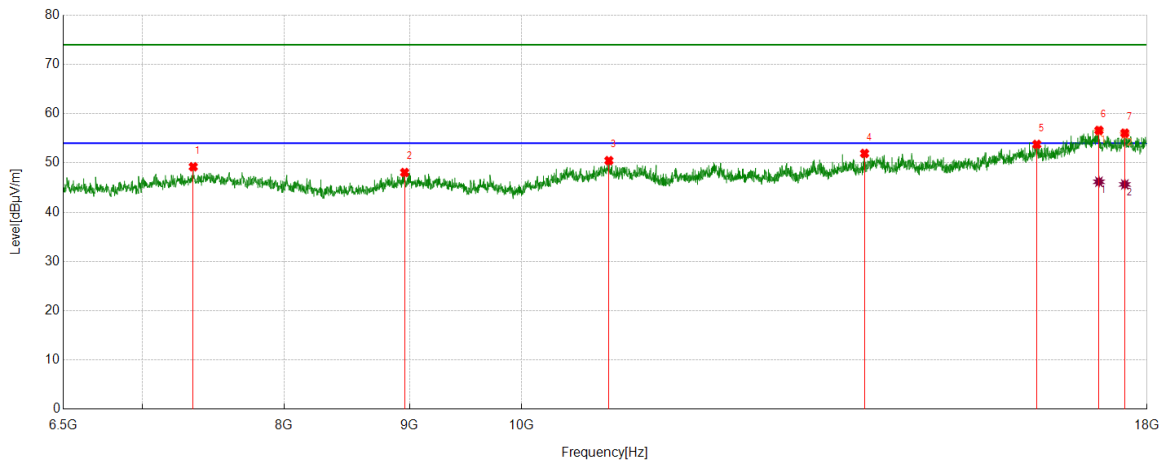
No.	Frequency	Reading Level	Correct Factor	Result	Limit	Margin	Remark
	[MHz]	[dBuV/m]	[dB]	[dBuV/m]	[dBuV/m]	[dB]	
1	17001.2502	26.69	19.12	45.81	54.00	-8.19	Horizontal
2	17718.2030	27.47	19.06	46.53	54.00	-7.47	Horizontal

- Remark: 1. Measurement = Reading Level + Correct Factor.  
 2. If Peak Result complies with AV limit, AV Result is deemed to comply with AV limit.  
 3. Test setup: RBW: 1 MHz, VBW: 3 MHz, Sweep time: auto.  
 4. Peak: Peak detector.  
 5. AVG: VBW refer to section 6.2.  
 6. For above 6.5GHz part, filter losses were only considered in the spurious frequency bands and the authorized band were not corrected for HPF losses. The proper operation of the transmitter prior to adding the filter to the measurement chain.  
 7. Only the worst case emission was recorded, if it complies with the limit, the other emissions deemed to comply with the limit.





Test Mode	Channel	Polarization	Verdict
11AC20	5180	Vertical	PASS



PK Result:

No.	Frequency	Reading Level	Correct Factor	Result	Limit	Margin	Remark
	[MHz]	[dBuV/m]	[dB]	[dBuV/m]	[dBuV/m]	[dB]	
1	7345.3909	39.66	9.56	49.22	74.00	-24.78	Vertical
2	8959.4932	38.55	9.51	48.06	74.00	-25.94	Vertical
3	10855.3926	37.73	12.74	50.47	74.00	-23.53	Vertical
4	13803.7173	37.87	14.06	51.93	74.00	-22.07	Vertical
5	16228.7048	35.76	18.01	53.77	74.00	-20.23	Vertical
6	17204.4507	36.9	19.48	56.38	74.00	-17.62	Vertical
7	17628.1047	36.9	18.89	55.79	74.00	-18.21	Vertical

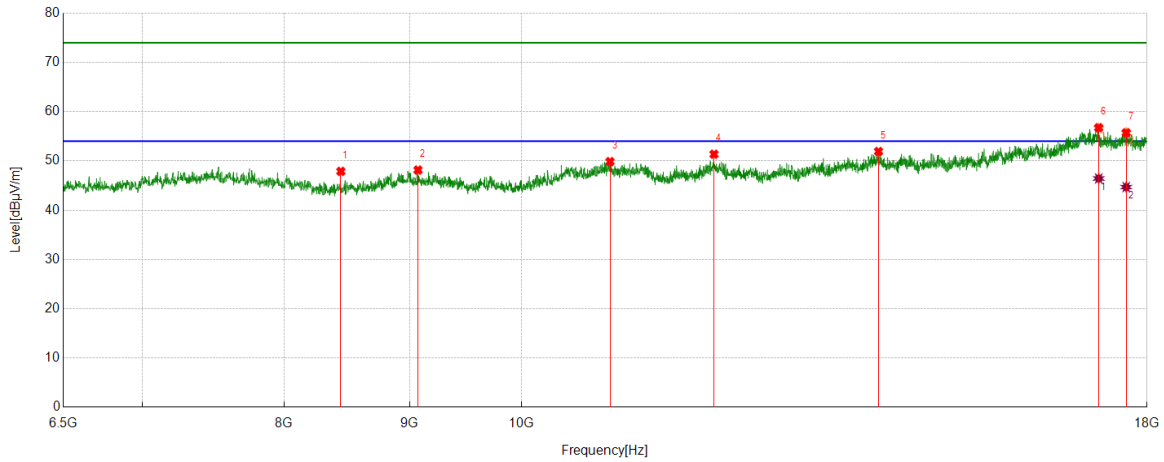
AV Result:

No.	Frequency	Reading Level	Correct Factor	Result	Limit	Margin	Remark
	[MHz]	[dBuV/m]	[dB]	[dBuV/m]	[dBuV/m]	[dB]	
1	17204.4507	26.70	19.48	46.18	54.00	-7.82	Vertical
2	17628.1047	26.75	18.89	45.64	54.00	-8.36	Vertical

- Remark: 1. Measurement = Reading Level + Correct Factor.  
 2. If Peak Result complies with AV limit, AV Result is deemed to comply with AV limit.  
 3. Test setup: RBW: 1 MHz, VBW: 3 MHz, Sweep time: auto.  
 4. Peak: Peak detector.  
 5. AVG: VBW refer to section 6.2.  
 6. For above 6.5GHz part, filter losses were only considered in the spurious frequency bands and the authorized band were not corrected for HPF losses. The proper operation of the transmitter prior to adding the filter to the measurement chain.  
 7. Only the worst case emission was recorded, if it complies with the limit, the other emissions deemed to comply with the limit.



Test Mode	Channel	Polarization	Verdict
11AC20	5200	Horizontal	PASS



PK Result:

No.	Frequency	Reading Level	Correct Factor	Result	Limit	Margin	Remark
	[MHz]	[dBuV/m]	[dB]	[dBuV/m]	[dBuV/m]	[dB]	
1	8438.073	40.49	7.39	47.88	74.00	-26.12	Horizontal
2	9072.5954	38.78	9.37	48.15	74.00	-25.85	Horizontal
3	10866.8945	37.05	12.81	49.86	74.00	-24.14	Horizontal
4	11982.5804	37.85	13.51	51.36	74.00	-22.64	Horizontal
5	13985.831	37.12	14.80	51.92	74.00	-22.08	Horizontal
6	17200.6168	36.87	19.80	56.67	74.00	-17.33	Horizontal
7	17651.1085	37.3	18.41	55.71	74.00	-18.29	Horizontal

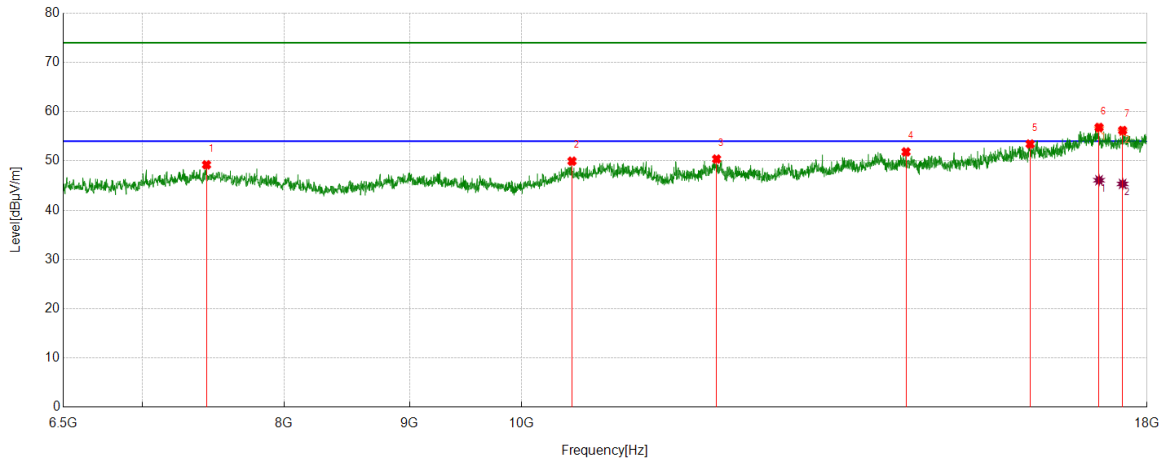
AV Result:

No.	Frequency	Reading Level	Correct Factor	Result	Limit	Margin	Remark
	[MHz]	[dBuV/m]	[dB]	[dBuV/m]	[dBuV/m]	[dB]	
1	17200.6168	26.64	19.80	46.44	54.00	-7.56	Horizontal
2	17651.1085	26.28	18.41	44.69	54.00	-9.31	Horizontal

- Remark: 1. Measurement = Reading Level + Correct Factor.  
 2. If Peak Result complies with AV limit, AV Result is deemed to comply with AV limit.  
 3. Test setup: RBW: 1 MHz, VBW: 3 MHz, Sweep time: auto.  
 4. Peak: Peak detector.  
 5. AVG: VBW refer to section 6.2.  
 6. For above 6.5GHz part, filter losses were only considered in the spurious frequency bands and the authorized band were not corrected for HPF losses. The proper operation of the transmitter prior to adding the filter to the measurement chain.  
 7. Only the worst case emission was recorded, if it complies with the limit, the other emissions deemed to comply with the limit.



Test Mode	Channel	Polarization	Verdict
11AC20	5200	Vertical	PASS



PK Result:

No.	Frequency	Reading Level	Correct Factor	Result	Limit	Margin	Remark
	[MHz]	[dBuV/m]	[dB]	[dBuV/m]	[dBuV/m]	[dB]	
1	7437.4062	39.82	9.39	49.21	74.00	-24.79	Vertical
2	10485.4142	37.83	12.12	49.95	74.00	-24.05	Vertical
3	12011.3352	37.05	13.33	50.38	74.00	-23.62	Vertical
4	14351.9753	37.42	14.41	51.83	74.00	-22.17	Vertical
5	16127.1045	37.09	16.34	53.43	74.00	-20.57	Vertical
6	17206.3677	37.25	19.33	56.58	74.00	-17.42	Vertical
7	17591.6819	37.27	18.66	55.93	74.00	-18.07	Vertical

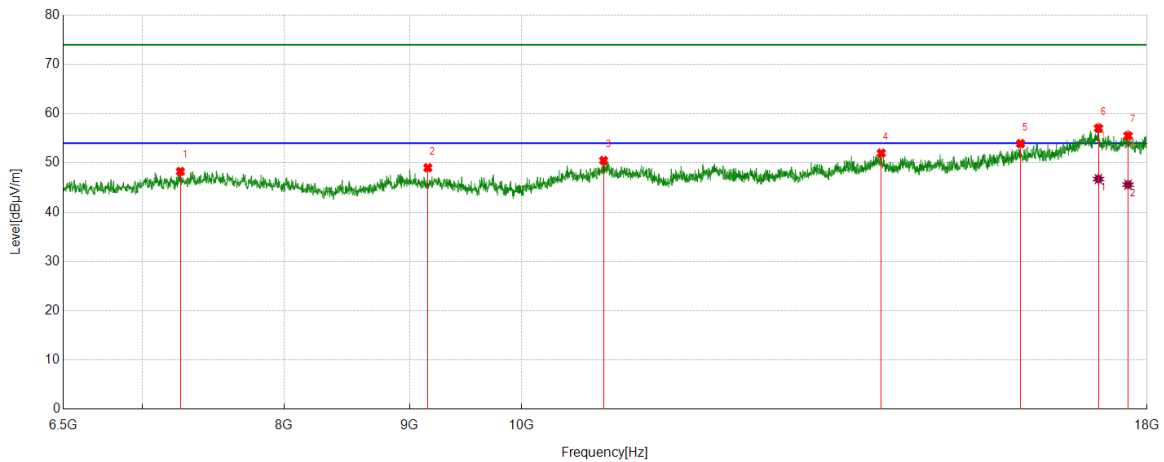
AV Result:

No.	Frequency	Reading Level	Correct Factor	Result	Limit	Margin	Remark
	[MHz]	[dBuV/m]	[dB]	[dBuV/m]	[dBuV/m]	[dB]	
1	17206.3677	26.75	19.33	46.08	54.00	-7.92	Vertical
2	17591.6819	26.68	18.66	45.34	54.00	-8.66	Vertical

- Remark: 1. Measurement = Reading Level + Correct Factor.  
 2. If Peak Result complies with AV limit, AV Result is deemed to comply with AV limit.  
 3. Test setup: RBW: 1 MHz, VBW: 3 MHz, Sweep time: auto.  
 4. Peak: Peak detector.  
 5. AVG: VBW refer to section 6.2.  
 6. For above 6.5GHz part, filter losses were only considered in the spurious frequency bands and the authorized band were not corrected for HPF losses. The proper operation of the transmitter prior to adding the filter to the measurement chain.  
 7. Only the worst case emission was recorded, if it complies with the limit, the other emissions deemed to comply with the limit.



Test Mode	Channel	Polarization	Verdict
11AC20	5220	Horizontal	PASS



PK Result:

No.	Frequency	Reading Level	Correct Factor	Result	Limit	Margin	Remark
	[MHz]	[dBuV/m]	[dB]	[dBuV/m]	[dBuV/m]	[dB]	
1	7257.2095	38.79	9.47	48.26	74.00	-25.74	Horizontal
2	9156.9428	39.63	9.39	49.02	74.00	-24.98	Horizontal
3	10801.717	38.04	12.45	50.49	74.00	-23.51	Horizontal
4	14022.2537	36.96	15.02	51.98	74.00	-22.02	Horizontal
5	15983.3306	37.76	16.15	53.91	74.00	-20.09	Horizontal
6	17196.7828	37.57	19.65	57.22	74.00	-16.78	Horizontal
7	17681.7803	37.17	18.57	55.74	74.00	-18.26	Horizontal

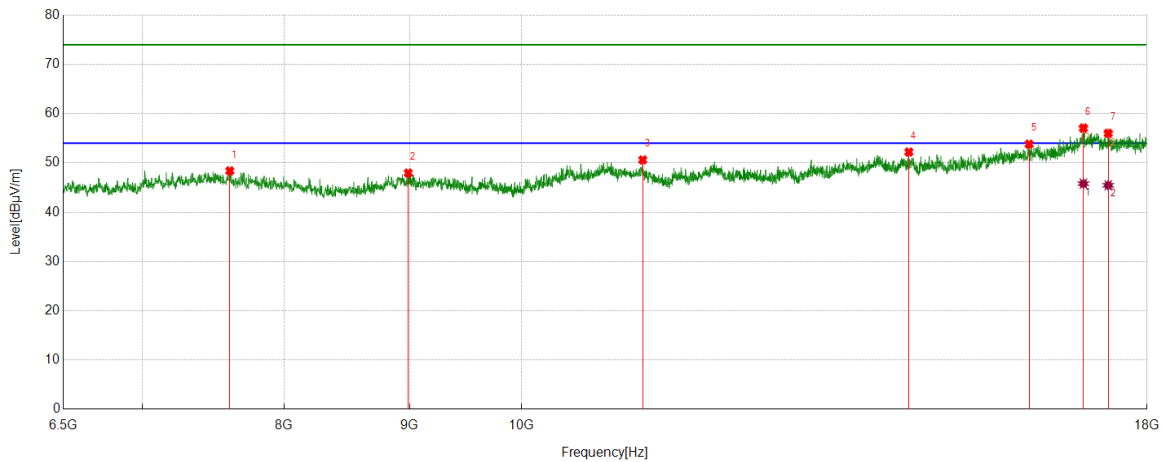
AV Result:

No.	Frequency	Reading Level	Correct Factor	Result	Limit	Margin	Remark
	[MHz]	[dBuV/m]	[dB]	[dBuV/m]	[dBuV/m]	[dB]	
1	17196.7828	27.08	19.65	46.73	54.00	-7.27	Horizontal
2	17681.7803	27.02	18.57	45.59	54.00	-8.41	Horizontal

- Remark: 1. Measurement = Reading Level + Correct Factor.  
 2. If Peak Result complies with AV limit, AV Result is deemed to comply with AV limit.  
 3. Test setup: RBW: 1 MHz, VBW: 3 MHz, Sweep time: auto.  
 4. Peak: Peak detector.  
 5. AVG: VBW refer to section 6.2.  
 6. For above 6.5GHz part, filter losses were only considered in the spurious frequency bands and the authorized band were not corrected for HPF losses. The proper operation of the transmitter prior to adding the filter to the measurement chain.  
 7. Only the worst case emission was recorded, if it complies with the limit, the other emissions deemed to comply with the limit.



Test Mode	Channel	Polarization	Verdict
11AC20	5220	Vertical	PASS



PK Result:

No.	Frequency	Reading Level	Correct Factor	Result	Limit	Margin	Remark
	[MHz]	[dBuV/m]	[dB]	[dBuV/m]	[dBuV/m]	[dB]	
1	7602.267	38.79	9.60	48.39	74.00	-25.61	Vertical
2	8990.165	38.40	9.55	47.95	74.00	-26.05	Vertical
3	11206.201	38.33	12.28	50.61	74.00	-23.39	Vertical
4	14390.3151	37.87	14.34	52.21	74.00	-21.79	Vertical
5	16111.7686	37.53	16.28	53.81	74.00	-20.19	Vertical
6	16955.2425	37.47	19.54	57.01	74.00	-16.99	Vertical
7	17355.8926	36.95	18.97	55.92	74.00	-18.08	Vertical

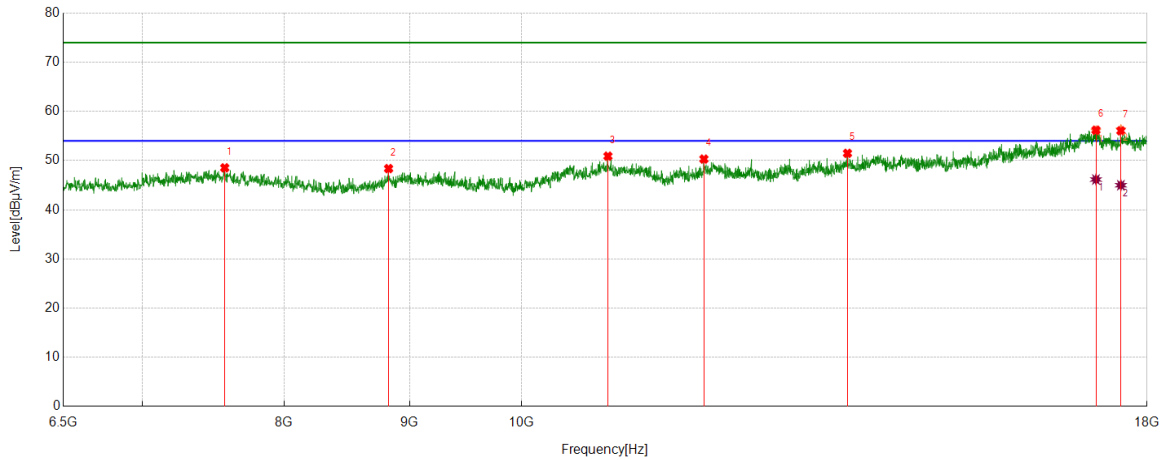
AV Result:

No.	Frequency	Reading Level	Correct Factor	Result	Limit	Margin	Remark
	[MHz]	[dBuV/m]	[dB]	[dBuV/m]	[dBuV/m]	[dB]	
1	16955.2425	26.25	19.54	45.79	54.00	-8.21	Vertical
2	17355.8926	26.49	18.97	45.46	54.00	-8.54	Vertical

- Remark: 1. Measurement = Reading Level + Correct Factor.  
 2. If Peak Result complies with AV limit, AV Result is deemed to comply with AV limit.  
 3. Test setup: RBW: 1 MHz, VBW: 3 MHz, Sweep time: auto.  
 4. Peak: Peak detector.  
 5. AVG: VBW refer to section 6.2.  
 6. For above 6.5GHz part, filter losses were only considered in the spurious frequency bands and the authorized band were not corrected for HPF losses. The proper operation of the transmitter prior to adding the filter to the measurement chain.  
 7. Only the worst case emission was recorded, if it complies with the limit, the other emissions deemed to comply with the limit.



Test Mode	Channel	Polarization	Verdict
11AC20	5240	Horizontal	PASS



PK Result:

No.	Frequency	Reading Level	Correct Factor	Result	Limit	Margin	Remark
	[MHz]	[dBuV/m]	[dB]	[dBuV/m]	[dBuV/m]	[dB]	
1	7565.8443	38.99	9.54	48.53	74.00	-25.47	Horizontal
2	8825.3042	39.36	9.01	48.37	74.00	-25.63	Horizontal
3	10845.8076	38.27	12.63	50.90	74.00	-23.10	Horizontal
4	11869.4782	37.39	12.92	50.31	74.00	-23.69	Horizontal
5	13583.2639	37.98	13.50	51.48	74.00	-22.52	Horizontal
6	17156.5261	36.31	19.75	56.06	74.00	-17.94	Horizontal
7	17562.9272	37.81	18.48	56.29	74.00	-17.71	Horizontal

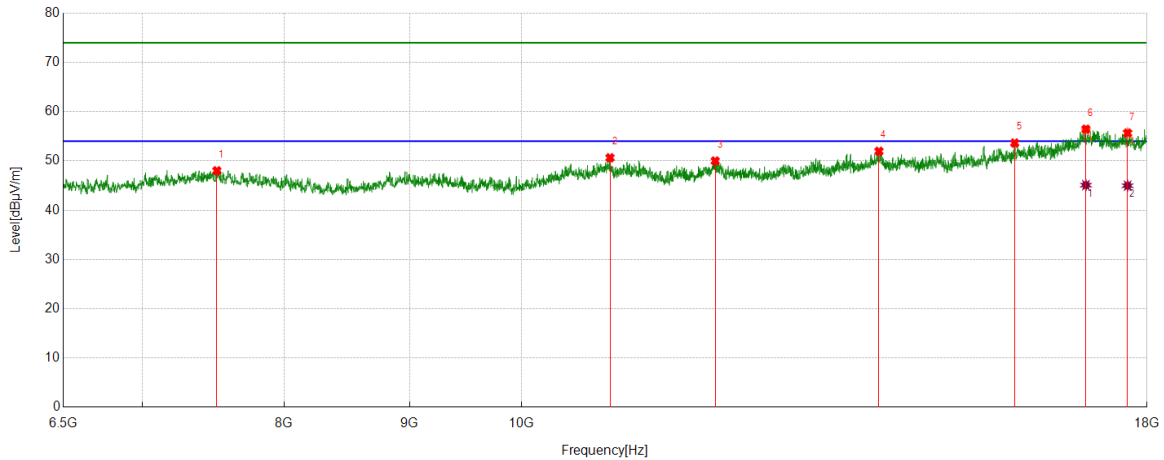
AV Result:

No.	Frequency	Reading Level	Correct Factor	Result	Limit	Margin	Remark
	[MHz]	[dBuV/m]	[dB]	[dBuV/m]	[dBuV/m]	[dB]	
1	17156.5261	26.40	19.75	46.15	54.00	-7.85	Horizontal
2	17562.9272	26.51	18.48	44.99	54.00	-9.01	Horizontal

- Remark: 1. Measurement = Reading Level + Correct Factor.  
 2. If Peak Result complies with AV limit, AV Result is deemed to comply with AV limit.  
 3. Test setup: RBW: 1 MHz, VBW: 3 MHz, Sweep time: auto.  
 4. Peak: Peak detector.  
 5. AVG: VBW refer to section 6.2.  
 6. For above 6.5GHz part, filter losses were only considered in the spurious frequency bands and the authorized band were not corrected for HPF losses. The proper operation of the transmitter prior to adding the filter to the measurement chain.  
 7. Only the worst case emission was recorded, if it complies with the limit, the other emissions deemed to comply with the limit.



Test Mode	Channel	Polarization	Verdict
11AC20	5240	Vertical	PASS



PK Result:

No.	Frequency	Reading Level	Correct Factor	Result	Limit	Margin	Remark
	[MHz]	[dBuV/m]	[dB]	[dBuV/m]	[dBuV/m]	[dB]	
1	7510.2517	38.54	9.47	48.01	74.00	-25.99	Vertical
2	10866.8945	37.83	12.81	50.64	74.00	-23.36	Vertical
3	11995.9993	36.50	13.50	50.00	74.00	-24.00	Vertical
4	13991.5819	36.98	14.98	51.96	74.00	-22.04	Vertical
5	15895.1492	37.35	16.29	53.64	74.00	-20.36	Vertical
6	16995.4993	36.89	19.30	56.19	74.00	-17.81	Vertical
7	17674.1124	36.75	19.00	55.75	74.00	-18.25	Vertical

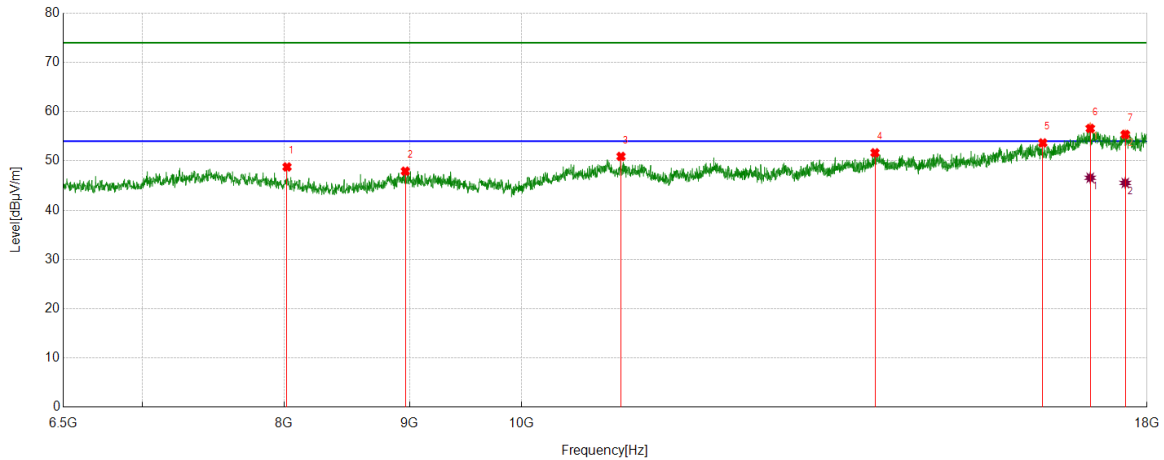
AV Result:

No.	Frequency	Reading Level	Correct Factor	Result	Limit	Margin	Remark
	[MHz]	[dBuV/m]	[dB]	[dBuV/m]	[dBuV/m]	[dB]	
1	16995.4993	25.79	19.30	45.09	54.00	-8.91	Vertical
2	17674.1124	25.97	19.00	44.97	54.00	-9.03	Vertical

- Remark: 1. Measurement = Reading Level + Correct Factor.  
 2. If Peak Result complies with AV limit, AV Result is deemed to comply with AV limit.  
 3. Test setup: RBW: 1 MHz, VBW: 3 MHz, Sweep time: auto.  
 4. Peak: Peak detector.  
 5. AVG: VBW refer to section 6.2.  
 6. For above 6.5GHz part, filter losses were only considered in the spurious frequency bands and the authorized band were not corrected for HPF losses. The proper operation of the transmitter prior to adding the filter to the measurement chain.  
 7. Only the worst case emission was recorded, if it complies with the limit, the other emissions deemed to comply with the limit.



Test Mode	Channel	Polarization	Verdict
11AC20	5260	Horizontal	PASS



PK Result:

No.	Frequency	Reading Level	Correct Factor	Result	Limit	Margin	Remark
	[MHz]	[dBuV/m]	[dB]	[dBuV/m]	[dBuV/m]	[dB]	
1	8022.087	39.94	8.84	48.78	74.00	-25.22	Horizontal
2	8965.2442	38.40	9.52	47.92	74.00	-26.08	Horizontal
3	10979.9967	37.98	12.93	50.91	74.00	-23.09	Horizontal
4	13939.8233	36.56	15.09	51.65	74.00	-22.35	Horizontal
5	16320.7201	37.28	16.37	53.65	74.00	-20.35	Horizontal
6	17064.5108	36.36	20.40	56.76	74.00	-17.24	Horizontal
7	17635.7726	36.55	18.76	55.31	74.00	-18.69	Horizontal

AV Result:

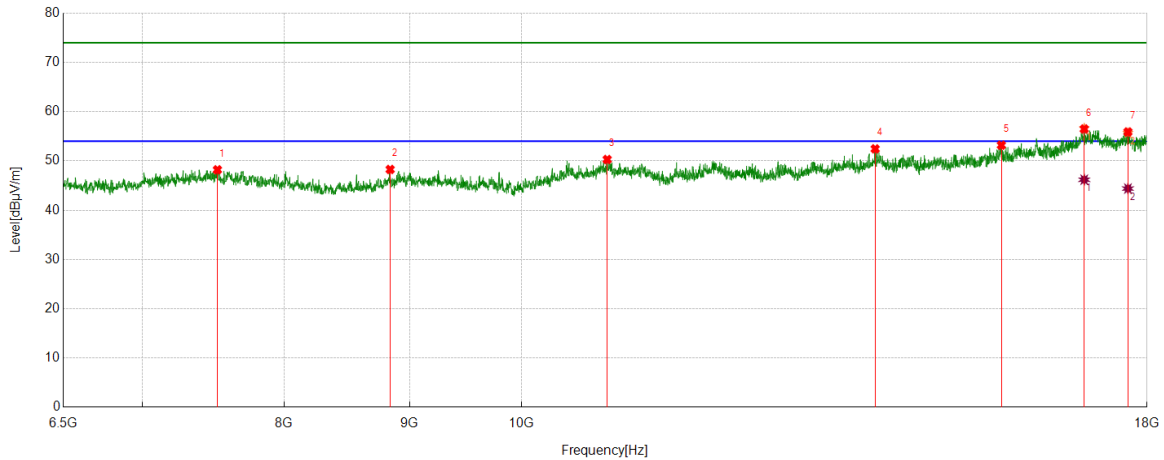
No.	Frequency	Reading Level	Correct Factor	Result	Limit	Margin	Remark
	[MHz]	[dBuV/m]	[dB]	[dBuV/m]	[dBuV/m]	[dB]	
1	17064.5108	26.18	20.40	46.58	54.00	-7.42	Horizontal
2	17635.7726	26.77	18.76	45.53	54.00	-8.47	Horizontal

- Remark: 1. Measurement = Reading Level + Correct Factor.  
 2. If Peak Result complies with AV limit, AV Result is deemed to comply with AV limit.  
 3. Test setup: RBW: 1 MHz, VBW: 3 MHz, Sweep time: auto.  
 4. Peak: Peak detector.  
 5. AVG: VBW refer to section 6.2.  
 6. For above 6.5GHz part, filter losses were only considered in the spurious frequency bands and the authorized band were not corrected for HPF losses. The proper operation of the transmitter prior to adding the filter to the measurement chain.  
 7. Only the worst case emission was recorded, if it complies with the limit, the other emissions deemed to comply with the limit.





Test Mode	Channel	Polarization	Verdict
11AC20	5260	Vertical	PASS



PK Result:

No.	Frequency	Reading Level	Correct Factor	Result	Limit	Margin	Remark
	[MHz]	[dBuV/m]	[dB]	[dBuV/m]	[dBuV/m]	[dB]	
1	7514.0857	38.77	9.43	48.20	74.00	-25.80	Vertical
2	8838.7231	39.30	8.97	48.27	74.00	-25.73	Vertical
3	10838.1397	37.61	12.68	50.29	74.00	-23.71	Vertical
4	13941.7403	37.43	15.02	52.45	74.00	-21.55	Vertical
5	15697.6996	36.82	16.37	53.19	74.00	-20.81	Vertical
6	16968.6614	36.09	20.51	56.60	74.00	-17.40	Vertical
7	17679.8633	37.1	18.58	55.68	74.00	-18.32	Vertical

AV Result:

No.	Frequency	Reading Level	Correct Factor	Result	Limit	Margin	Remark
	[MHz]	[dBuV/m]	[dB]	[dBuV/m]	[dBuV/m]	[dB]	
1	16968.6614	25.68	20.51	46.19	54.00	-7.81	Vertical
2	17679.8633	25.81	18.58	44.39	54.00	-9.61	Vertical

- Remark: 1. Measurement = Reading Level + Correct Factor.  
 2. If Peak Result complies with AV limit, AV Result is deemed to comply with AV limit.  
 3. Test setup: RBW: 1 MHz, VBW: 3 MHz, Sweep time: auto.  
 4. Peak: Peak detector.  
 5. AVG: VBW refer to section 6.2.  
 6. For above 6.5GHz part, filter losses were only considered in the spurious frequency bands and the authorized band were not corrected for HPF losses. The proper operation of the transmitter prior to adding the filter to the measurement chain.  
 7. Only the worst case emission was recorded, if it complies with the limit, the other emissions deemed to comply with the limit.