



## **Appendix III**

### **Setup Photographs**



**Bluetooth & BLE:**

**For Antenna Type 1: PCB Antenna**

**RADIATED RF MEASUREMENT SETUP (9KHz ~ 30 MHz)**

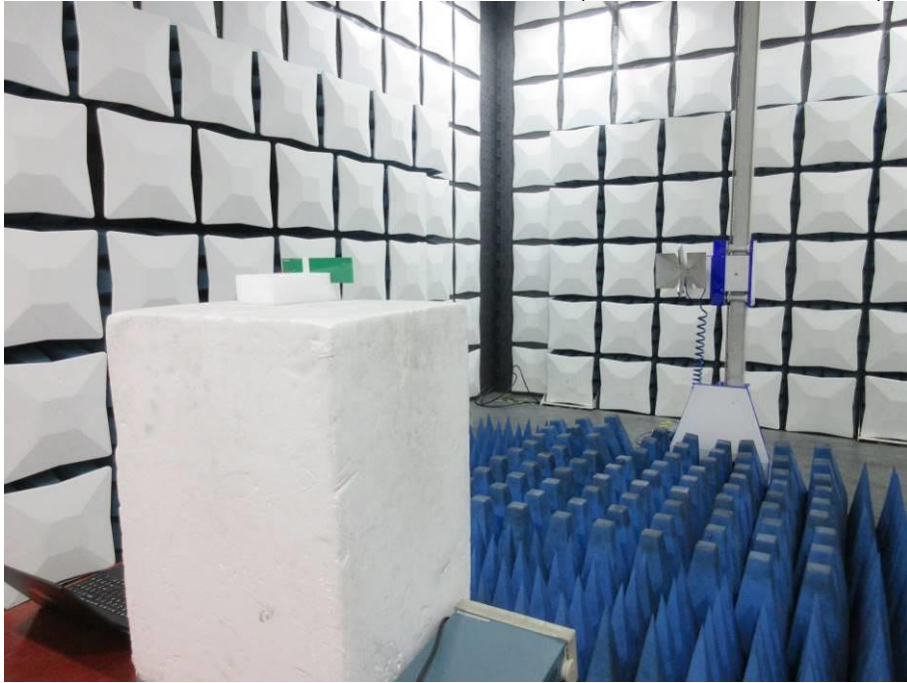


**RADIATED RF MEASUREMENT SETUP (30MHz ~ 1 GHz)**

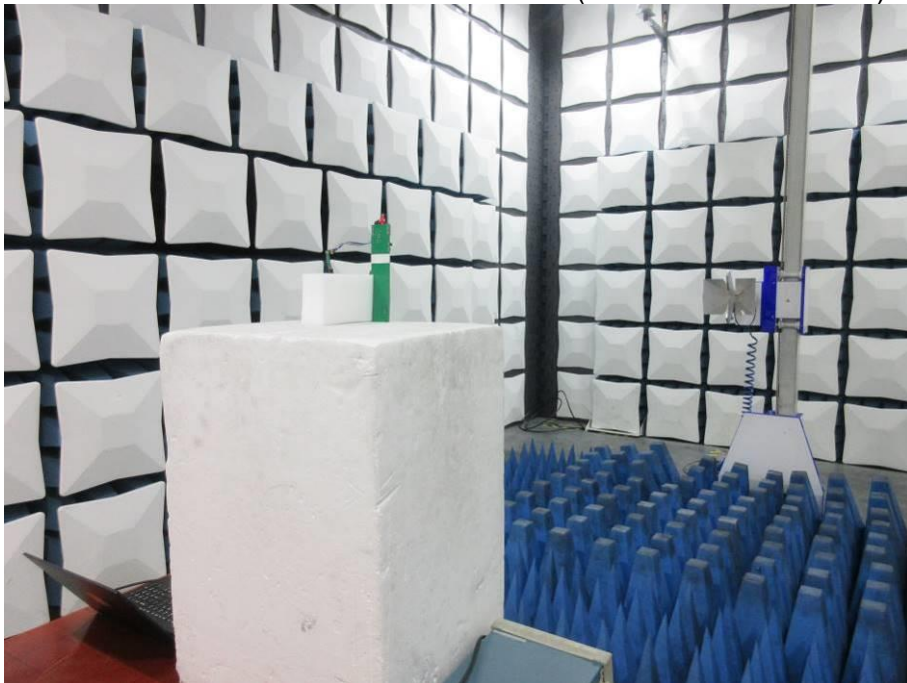




RADIATED RF MEASUREMENT SETUP (ABOVE 1 GHz- X axis)

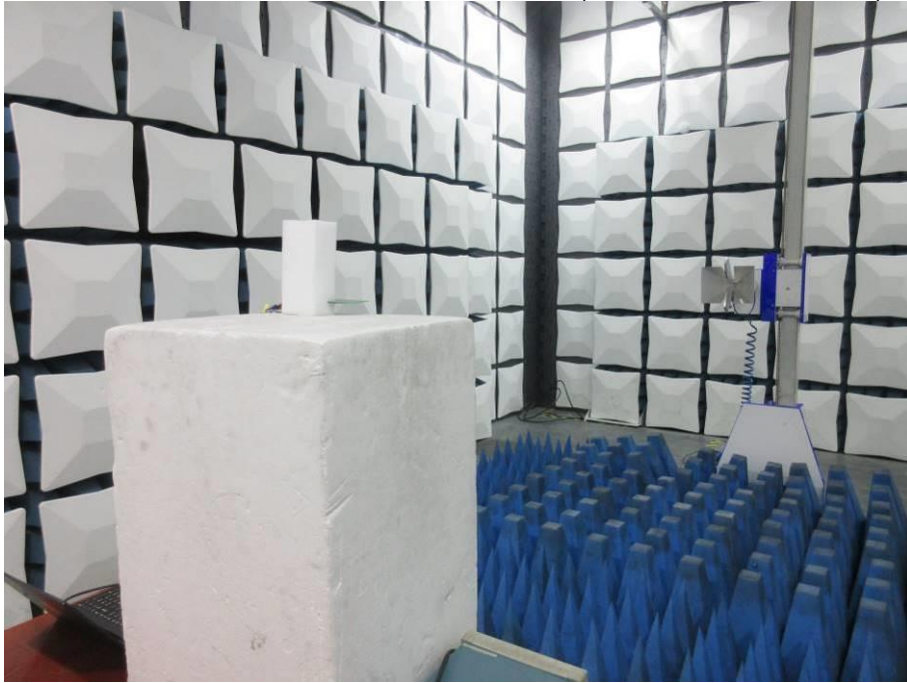


RADIATED RF MEASUREMENT SETUP (ABOVE 1 GHz- Y axis)

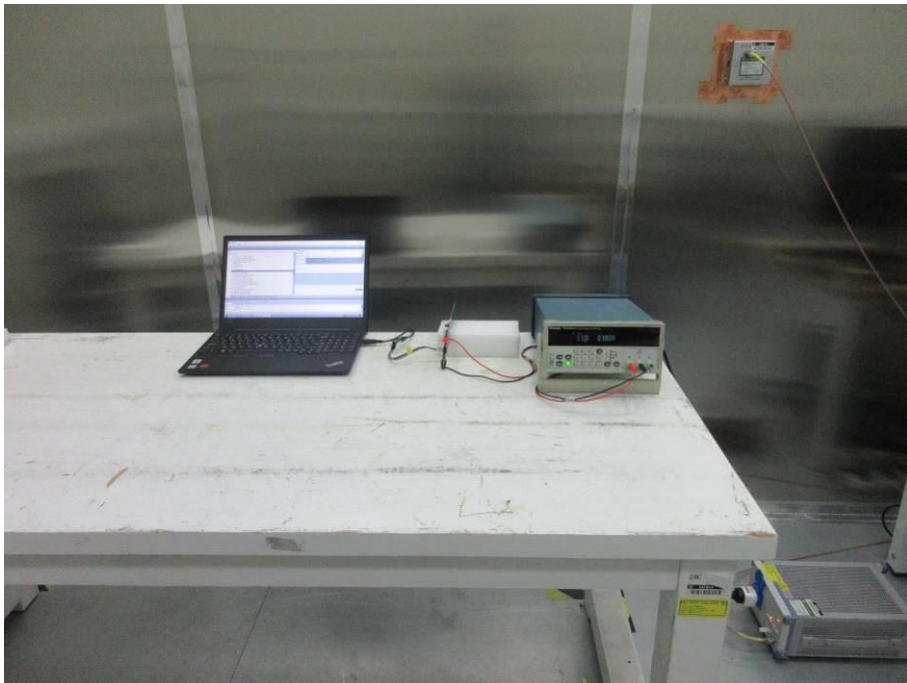




RADIATED RF MEASUREMENT SETUP (ABOVE 1 GHz- Z axis)



POWERLINE CONDUCTED EMISSIONS MEASUREMENT SETUP





## Antenna Type 2: External Dipole Antenna

RADIATED RF MEASUREMENT SETUP (9KHz ~ 30 MHz)



RADIATED RF MEASUREMENT SETUP (30MHz ~ 1 GHz)





RADIATED RF MEASUREMENT SETUP (ABOVE 1 GHz- X axis)

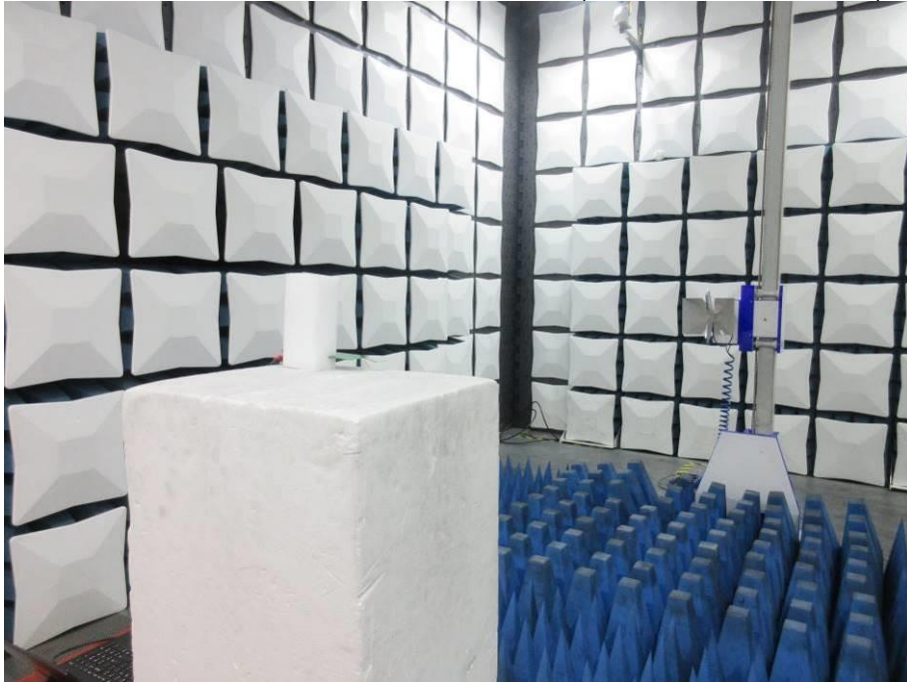


RADIATED RF MEASUREMENT SETUP (ABOVE 1 GHz- Y axis)





RADIATED RF MEASUREMENT SETUP (ABOVE 1 GHz- Z axis)



POWERLINE CONDUCTED EMISSIONS MEASUREMENT SETUP





## 2.4G WIFI & 5G WIFI

For Antenna Type 1: PCB Antenna

RADIATED RF MEASUREMENT SETUP (9KHz ~ 30 MHz)



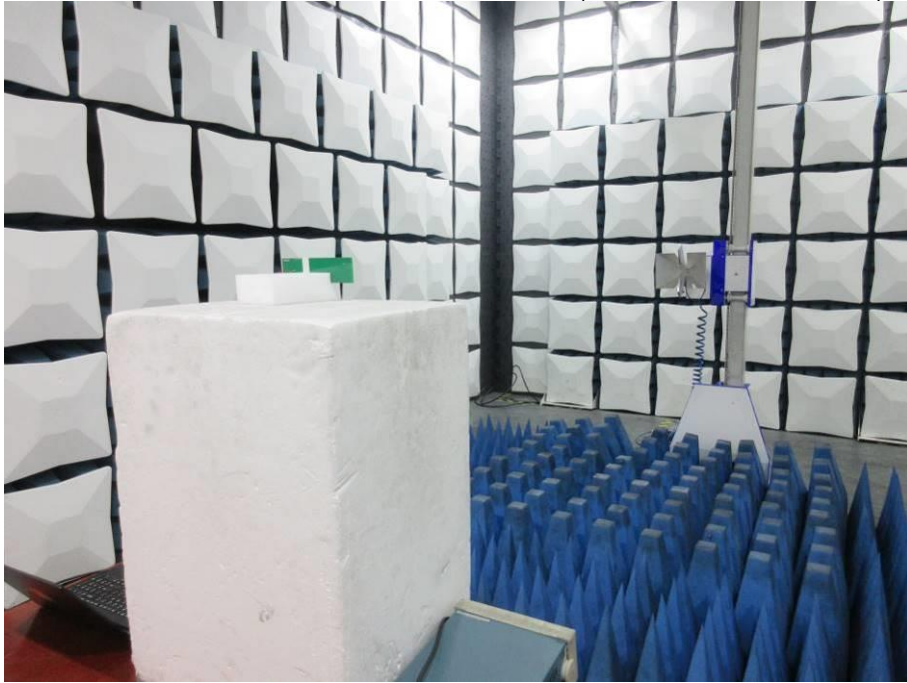
RADIATED RF MEASUREMENT SETUP (30MHz ~ 1 GHz)



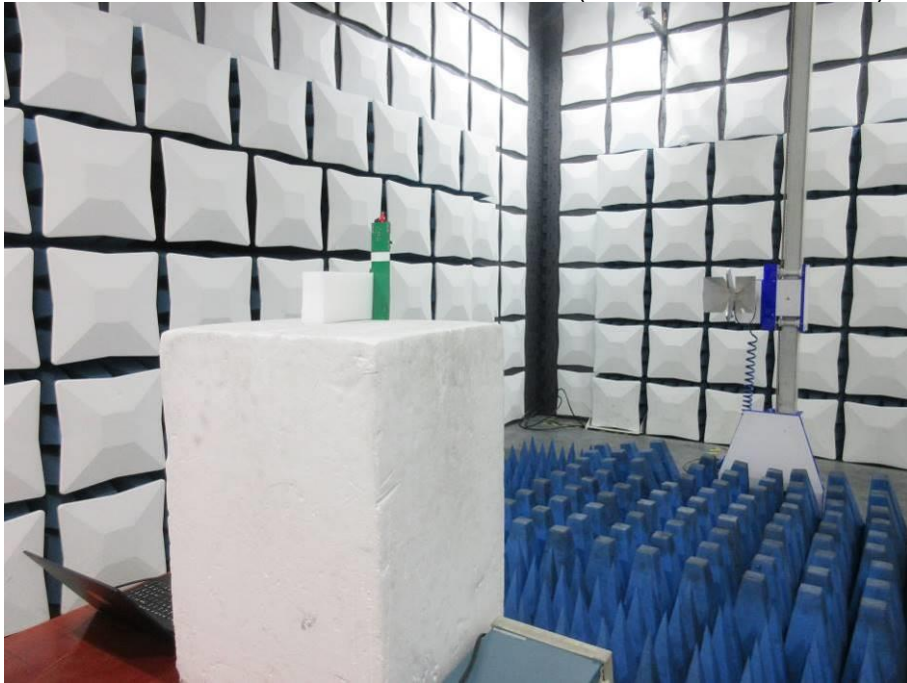




RADIATED RF MEASUREMENT SETUP (ABOVE 1 GHz- X axis)

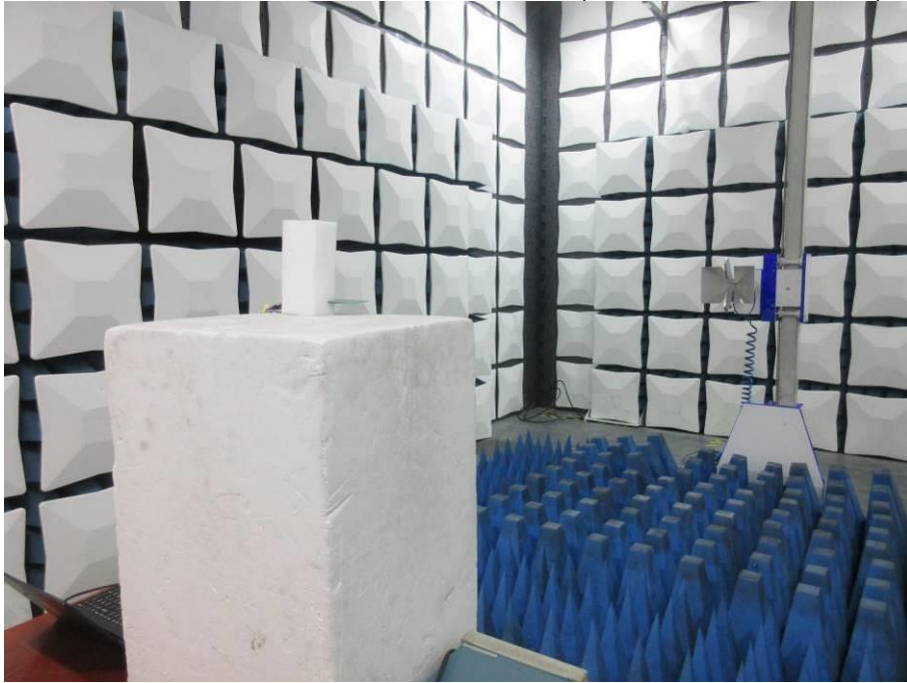


RADIATED RF MEASUREMENT SETUP (ABOVE 1 GHz- Y axis)

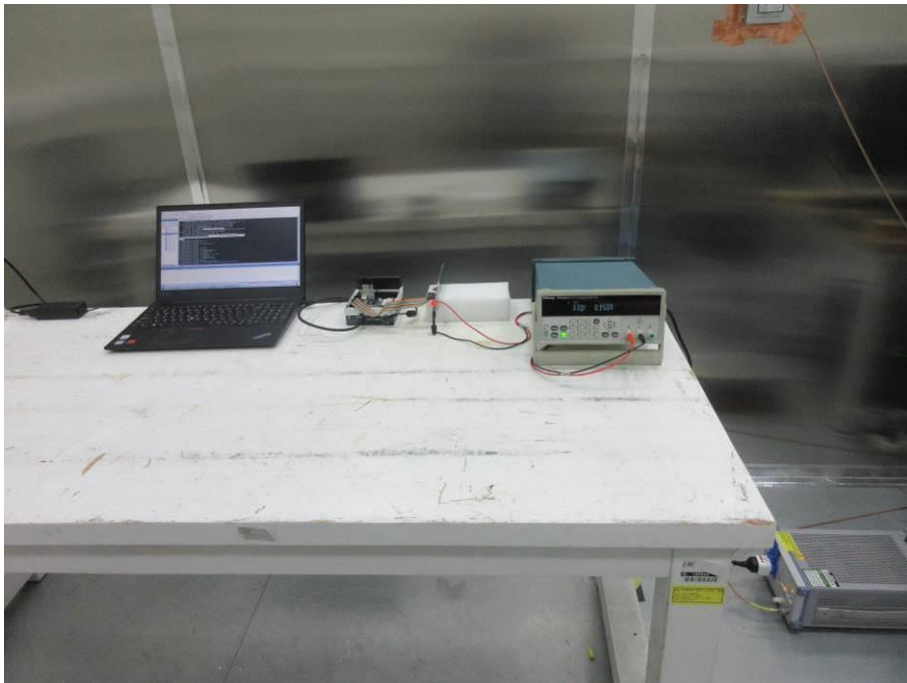




RADIATED RF MEASUREMENT SETUP (ABOVE 1 GHz- Z axis)



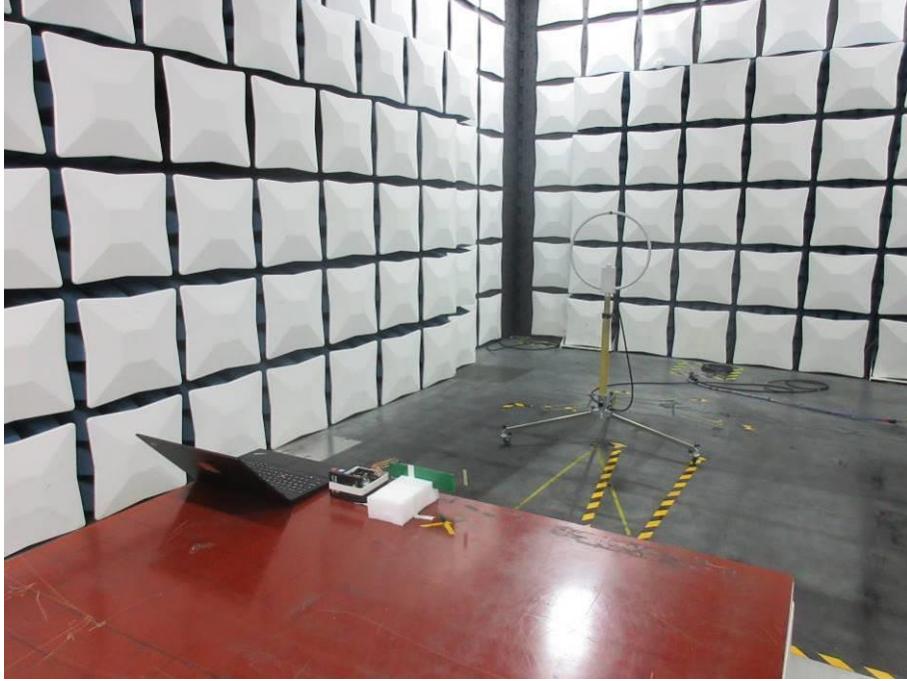
POWERLINE CONDUCTED EMISSIONS MEASUREMENT SETUP





## Antenna Type 2: External Dipole Antenna

RADIATED RF MEASUREMENT SETUP (9KHz ~ 30 MHz)



RADIATED RF MEASUREMENT SETUP (30MHz ~ 1 GHz)





RADIATED RF MEASUREMENT SETUP (ABOVE 1 GHz- X axis)

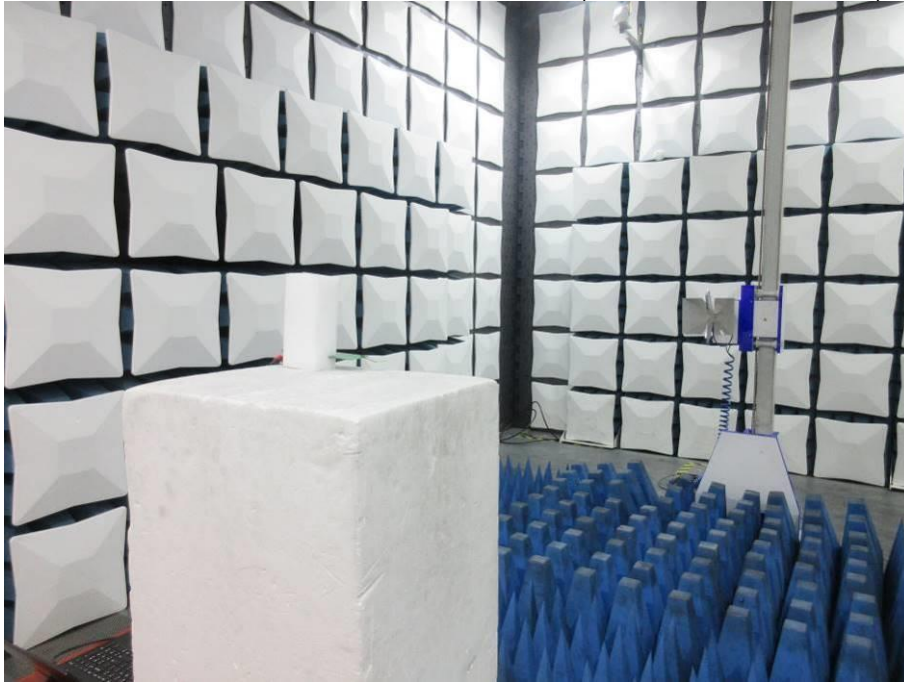


RADIATED RF MEASUREMENT SETUP (ABOVE 1 GHz- Y axis)

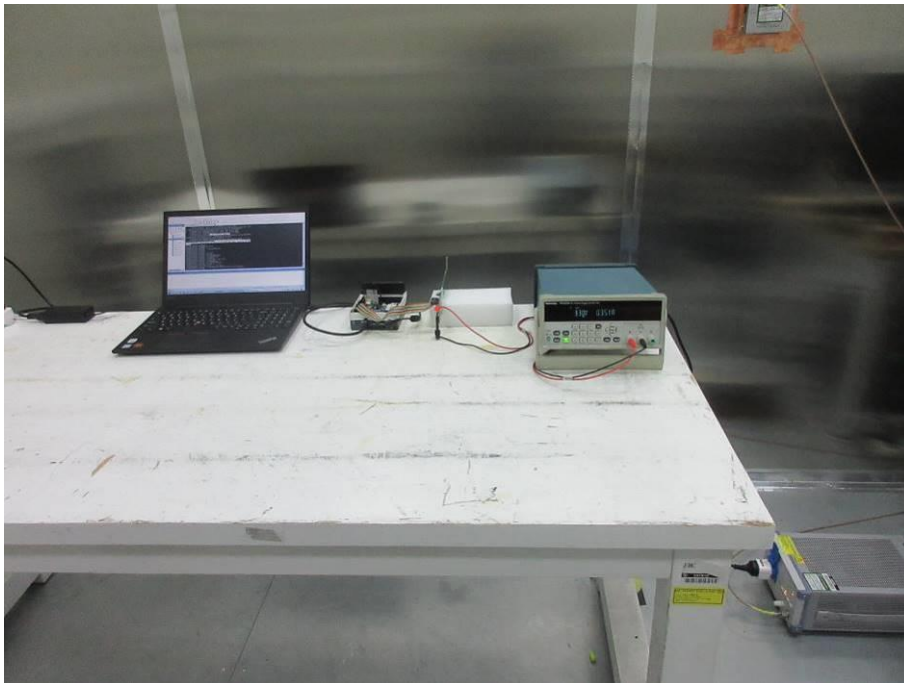




RADIATED RF MEASUREMENT SETUP (ABOVE 1 GHz- Z axis)

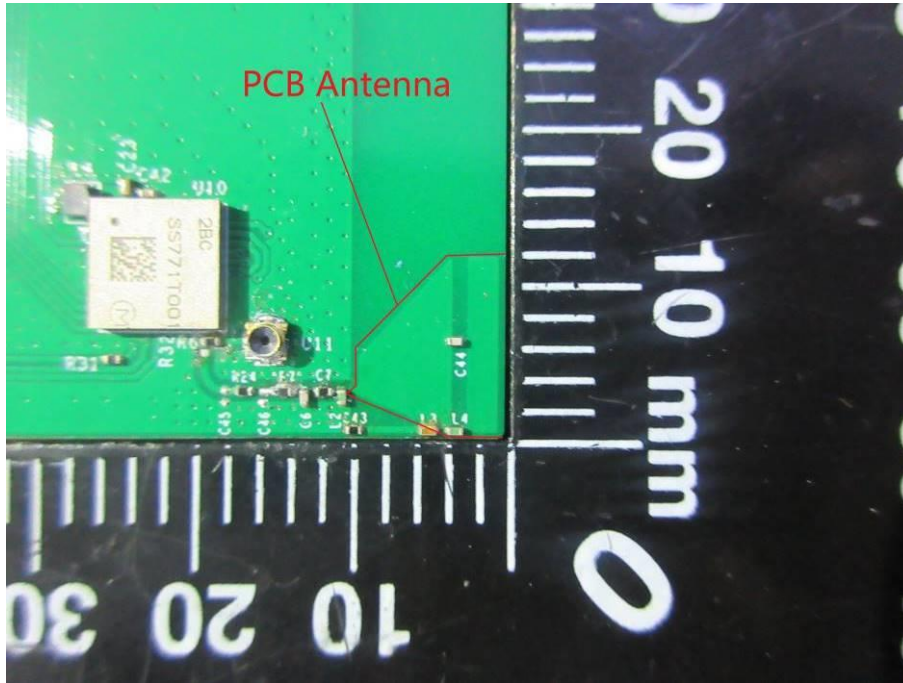


POWERLINE CONDUCTED EMISSIONS MEASUREMENT SETUP

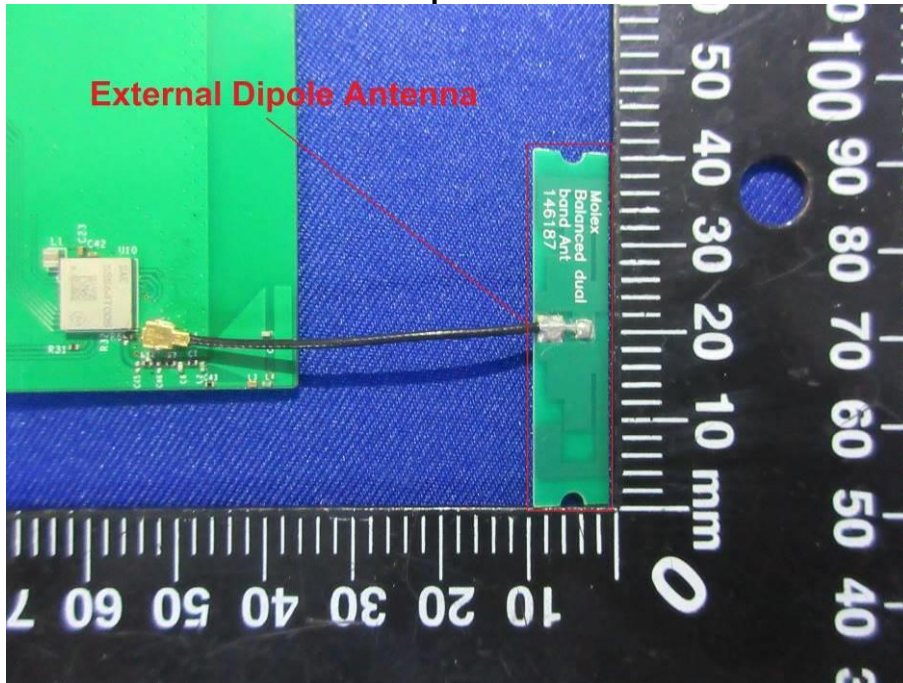




**PCB Antenna**

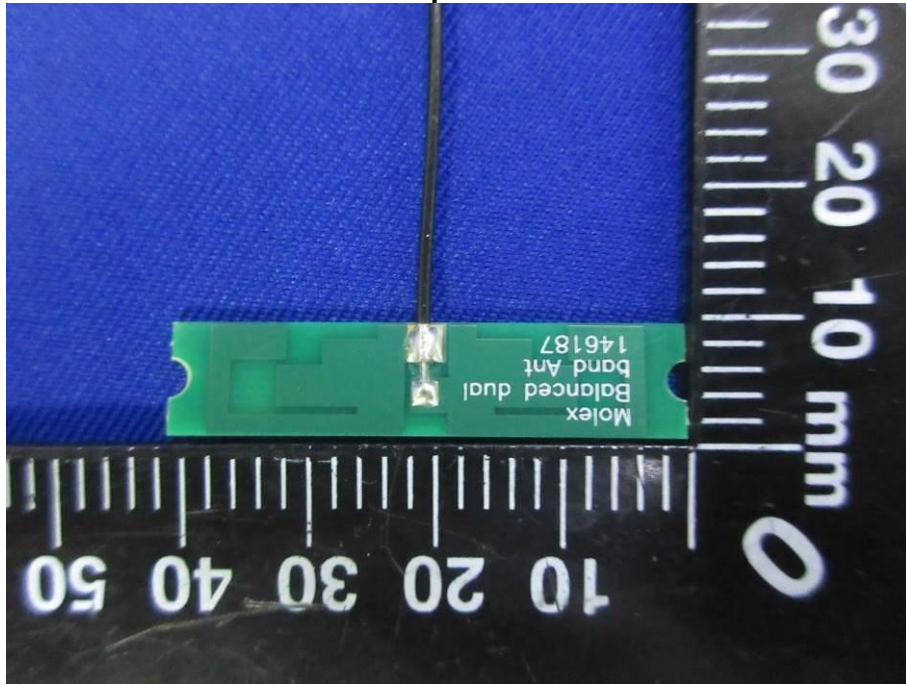


**External Dipole Antenna-1**





External Dipole Antenna-2



External Dipole Antenna-3

