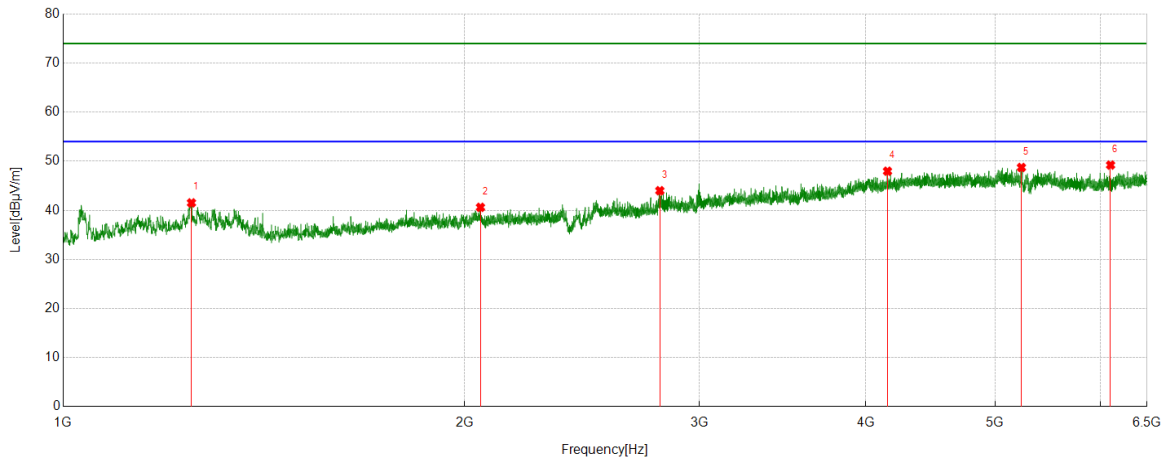




Test Mode	Channel	Polarization	Verdict
11A	5785	Vertical	PASS



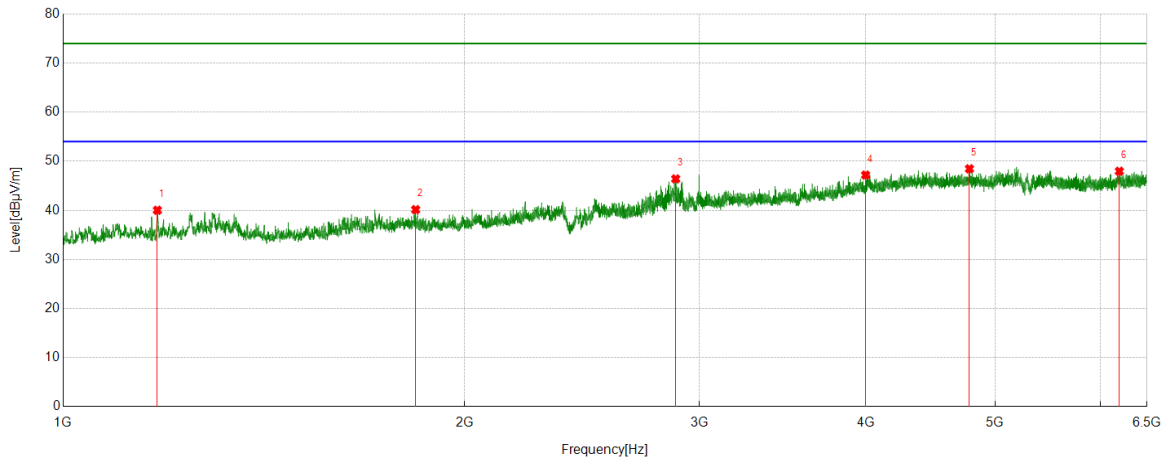
PK Result:

No.	Frequency	Reading Level	Correct Factor	Result	Limit	Margin	Remark
	[MHz]	[dBuV/m]	[dB]	[dBuV/m]	[dBuV/m]	[dB]	
1	1248.0413	47.16	-5.64	41.52	74.00	-32.48	Vertical
2	2055.8426	43.14	-2.53	40.61	74.00	-33.39	Vertical
3	2802.3004	44.25	-0.25	44.00	74.00	-30.00	Vertical
4	4152.0169	41.37	6.60	47.97	74.00	-26.03	Vertical
5	5232.4703	40.86	7.87	48.73	74.00	-25.27	Vertical
6	6103.2893	40.98	8.24	49.22	74.00	-24.78	Vertical

- Remark: 1. Measurement = Reading Level + Correct Factor.  
 2. If Peak Result complies with AV limit, AV Result is deemed to comply with AV limit.  
 3. Test setup: RBW: 1 MHz, VBW: 3 MHz, Sweep time: auto.  
 4. Peak: Peak detector.  
 5. AVG: VBW refer to section 6.2.  
 6. For below 6.5GHz part, filter losses were only considered in the spurious frequency bands and the authorized band were not corrected for Band Reject Filter losses.  
 The proper operation of the transmitter prior to adding the filter to the measurement chain.  
 7. Only the worst case emission was recorded, if it complies with the limit, the other emissions deemed to comply with the limit.



Test Mode	Channel	Polarization	Verdict
11A	5825	Horizontal	PASS



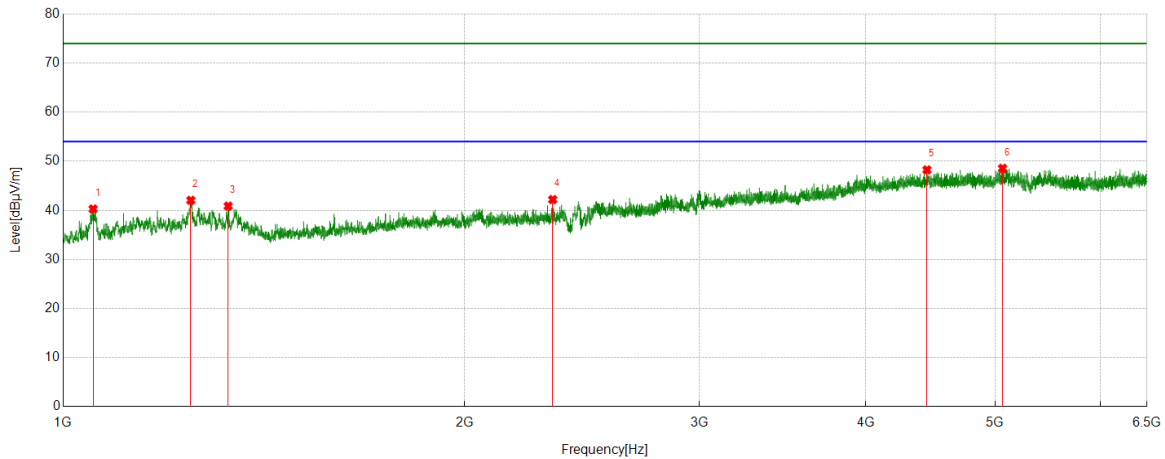
PK Result:

No.	Frequency	Reading Level	Correct Factor	Result	Limit	Margin	Remark
	[MHz]	[dBuV/m]	[dB]	[dBuV/m]	[dBuV/m]	[dB]	
1	1176.6961	45.63	-5.61	40.02	74.00	-33.98	Horizontal
2	1838.1397	43.85	-3.71	40.14	74.00	-33.86	Horizontal
3	2879.98	46.11	0.29	46.40	74.00	-27.60	Horizontal
4	3997.9998	41.38	5.80	47.18	74.00	-26.82	Horizontal
5	4783.6426	40.77	7.69	48.46	74.00	-25.54	Horizontal
6	6196.633	39.45	8.51	47.96	74.00	-26.04	Horizontal

- Remark: 1. Measurement = Reading Level + Correct Factor.  
 2. If Peak Result complies with AV limit, AV Result is deemed to comply with AV limit.  
 3. Test setup: RBW: 1 MHz, VBW: 3 MHz, Sweep time: auto.  
 4. Peak: Peak detector.  
 5. AVG: VBW refer to section 6.2.  
 6. For below 6.5GHz part, filter losses were only considered in the spurious frequency bands and the authorized band were not corrected for Band Reject Filter losses.  
 The proper operation of the transmitter prior to adding the filter to the measurement chain.  
 7. Only the worst case emission was recorded, if it complies with the limit, the other emissions deemed to comply with the limit.



Test Mode	Channel	Polarization	Verdict
11A	5825	Vertical	PASS



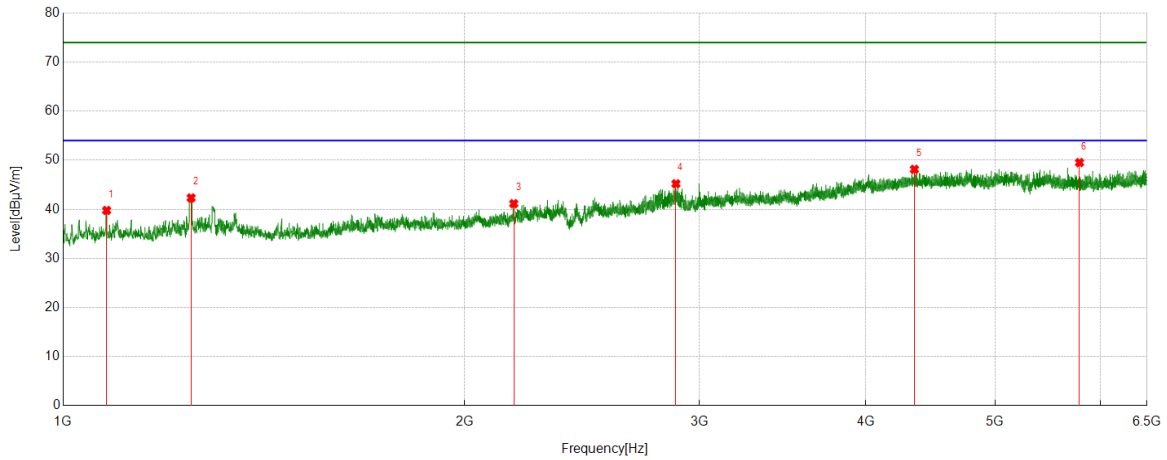
PK Result:

No.	Frequency	Reading Level	Correct Factor	Result	Limit	Margin	Remark
	[MHz]	[dBuV/m]	[dB]	[dBuV/m]	[dBuV/m]	[dB]	
1	1053.0088	45.90	-5.63	40.27	74.00	-33.73	Vertical
2	1246.7078	47.67	-5.63	42.04	74.00	-31.96	Vertical
3	1329.7216	46.54	-5.68	40.86	74.00	-33.14	Vertical
4	2328.8881	44.00	-1.81	42.19	74.00	-31.81	Vertical
5	4444.8828	41.16	7.08	48.24	74.00	-25.76	Vertical
6	5064.4516	40.94	7.61	48.55	74.00	-25.45	Vertical

- Remark: 1. Measurement = Reading Level + Correct Factor.  
 2. If Peak Result complies with AV limit, AV Result is deemed to comply with AV limit.  
 3. Test setup: RBW: 1 MHz, VBW: 3 MHz, Sweep time: auto.  
 4. Peak: Peak detector.  
 5. AVG: VBW refer to section 6.2.  
 6. For below 6.5GHz part, filter losses were only considered in the spurious frequency bands and the authorized band were not corrected for Band Reject Filter losses.  
 The proper operation of the transmitter prior to adding the filter to the measurement chain.  
 7. Only the worst case emission was recorded, if it complies with the limit, the other emissions deemed to comply with the limit.



Test Mode	Channel	Polarization	Verdict
11AC20	5180	Horizontal	PASS



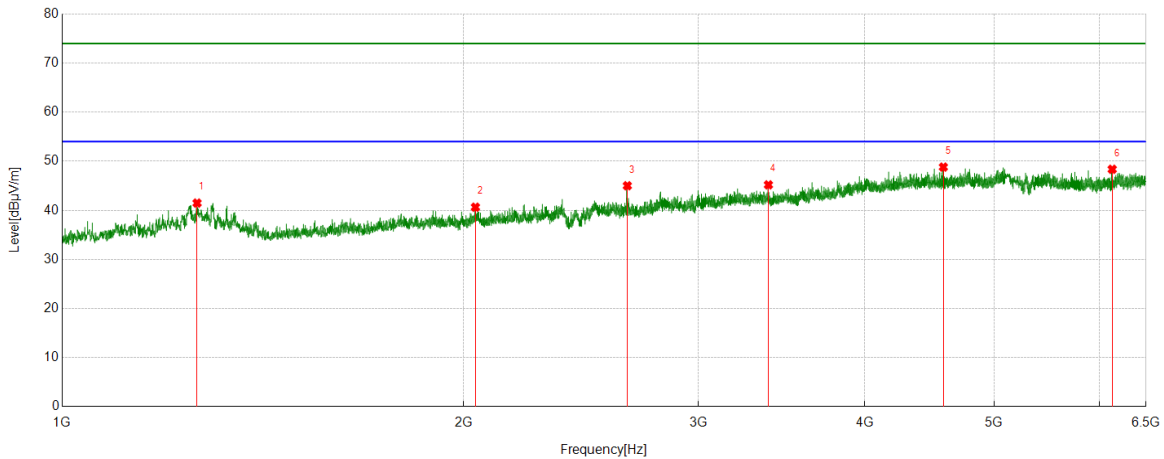
PK Result:

No.	Frequency	Reading Level	Correct Factor	Result	Limit	Margin	Remark
	[MHz]	[dBuV/m]	[dB]	[dBuV/m]	[dBuV/m]	[dB]	
1	1078.013	45.19	-5.41	39.78	74.00	-34.22	Horizontal
2	1247.3746	47.97	-5.64	42.33	74.00	-31.67	Horizontal
3	2177.5296	43.49	-2.33	41.16	74.00	-32.84	Horizontal
4	2881.3136	44.88	0.33	45.21	74.00	-28.79	Horizontal
5	4349.5944	40.98	7.17	48.15	74.00	-25.85	Horizontal
6	5784.7539	42.15	7.38	49.53	74.00	-24.47	Horizontal

- Remark: 1. Measurement = Reading Level + Correct Factor.  
 2. If Peak Result complies with AV limit, AV Result is deemed to comply with AV limit.  
 3. Test setup: RBW: 1 MHz, VBW: 3 MHz, Sweep time: auto.  
 4. Peak: Peak detector.  
 5. AVG: VBW refer to section 6.2.  
 6. For below 6.5GHz part, filter losses were only considered in the spurious frequency bands and the authorized band were not corrected for Band Reject Filter losses.  
 The proper operation of the transmitter prior to adding the filter to the measurement chain.  
 7. Only the worst case emission was recorded, if it complies with the limit, the other emissions deemed to comply with the limit.



Test Mode	Channel	Polarization	Verdict
11AC20	5180	Vertical	PASS



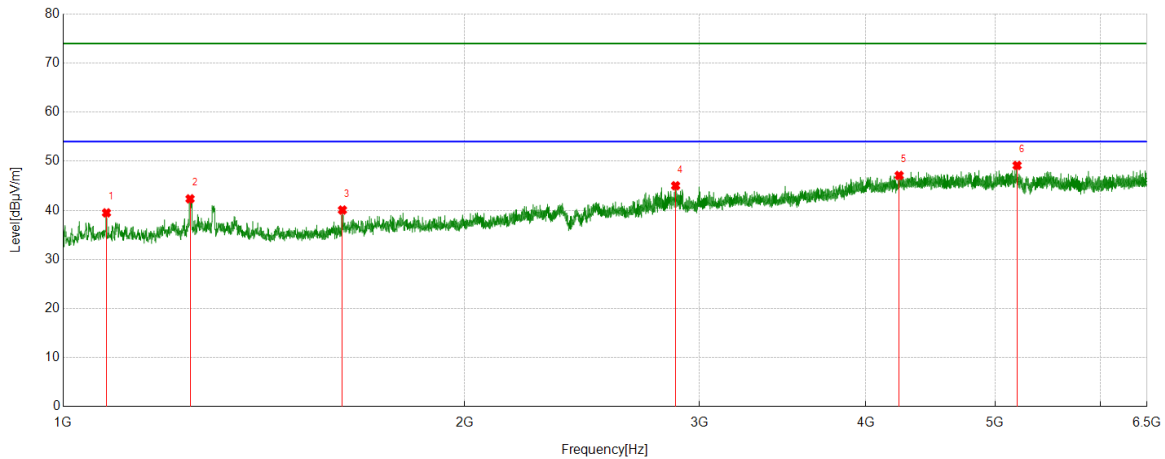
PK Result:

No.	Frequency	Reading Level	Correct Factor	Result	Limit	Margin	Remark
	[MHz]	[dBuV/m]	[dB]	[dBuV/m]	[dBuV/m]	[dB]	
1	1262.3771	47.12	-5.64	41.48	74.00	-32.52	Vertical
2	2041.5069	43.03	-2.39	40.64	74.00	-33.36	Vertical
3	2653.9423	45.75	-0.74	45.01	74.00	-28.99	Vertical
4	3386.2096	42.26	2.93	45.19	74.00	-28.81	Vertical
5	4580.6201	41.53	7.28	48.81	74.00	-25.19	Vertical
6	6131.2924	40.27	8.09	48.36	74.00	-25.64	Vertical

- Remark: 1. Measurement = Reading Level + Correct Factor.  
 2. If Peak Result complies with AV limit, AV Result is deemed to comply with AV limit.  
 3. Test setup: RBW: 1 MHz, VBW: 3 MHz, Sweep time: auto.  
 4. Peak: Peak detector.  
 5. AVG: VBW refer to section 6.2.  
 6. For below 6.5GHz part, filter losses were only considered in the spurious frequency bands and the authorized band were not corrected for Band Reject Filter losses.  
 The proper operation of the transmitter prior to adding the filter to the measurement chain.  
 7. Only the worst case emission was recorded, if it complies with the limit, the other emissions deemed to comply with the limit.



Test Mode	Channel	Polarization	Verdict
11AC20	5200	Horizontal	PASS



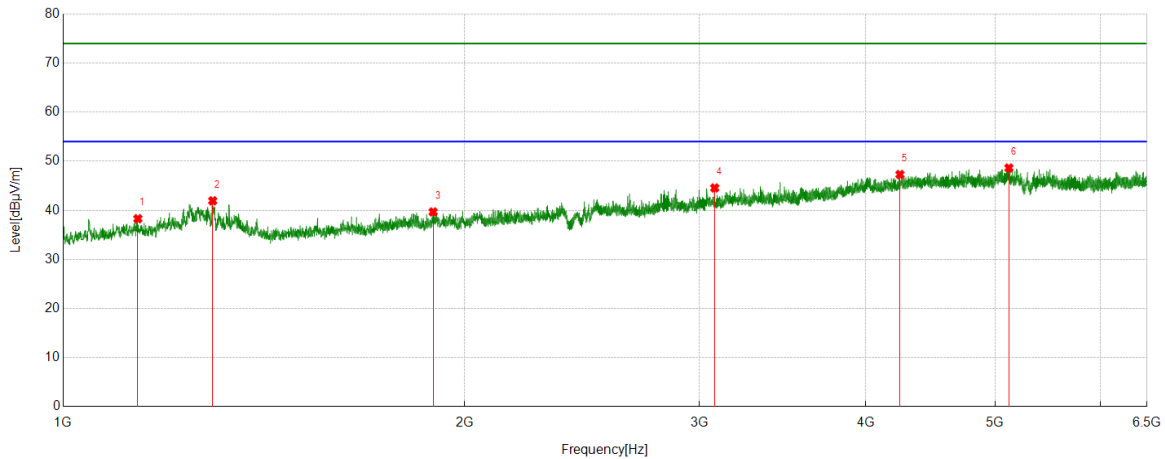
PK Result:

No.	Frequency	Reading Level	Correct Factor	Result	Limit	Margin	Remark
	[MHz]	[dBuV/m]	[dB]	[dBuV/m]	[dBuV/m]	[dB]	
1	1077.6796	44.89	-5.40	39.49	74.00	-34.51	Horizontal
2	1245.0408	47.96	-5.62	42.34	74.00	-31.66	Horizontal
3	1619.77	45.08	-5.02	40.06	74.00	-33.94	Horizontal
4	2879.6466	44.72	0.29	45.01	74.00	-28.99	Horizontal
5	4236.4152	40.61	6.49	47.10	74.00	-26.90	Horizontal
6	5193.5771	41.23	7.91	49.14	74.00	-24.86	Horizontal

- Remark: 1. Measurement = Reading Level + Correct Factor.  
 2. If Peak Result complies with AV limit, AV Result is deemed to comply with AV limit.  
 3. Test setup: RBW: 1 MHz, VBW: 3 MHz, Sweep time: auto.  
 4. Peak: Peak detector.  
 5. AVG: VBW refer to section 6.2.  
 6. For below 6.5GHz part, filter losses were only considered in the spurious frequency bands and the authorized band were not corrected for Band Reject Filter losses.  
 The proper operation of the transmitter prior to adding the filter to the measurement chain.  
 7. Only the worst case emission was recorded, if it complies with the limit, the other emissions deemed to comply with the limit.



Test Mode	Channel	Polarization	Verdict
11AC20	5200	Vertical	PASS



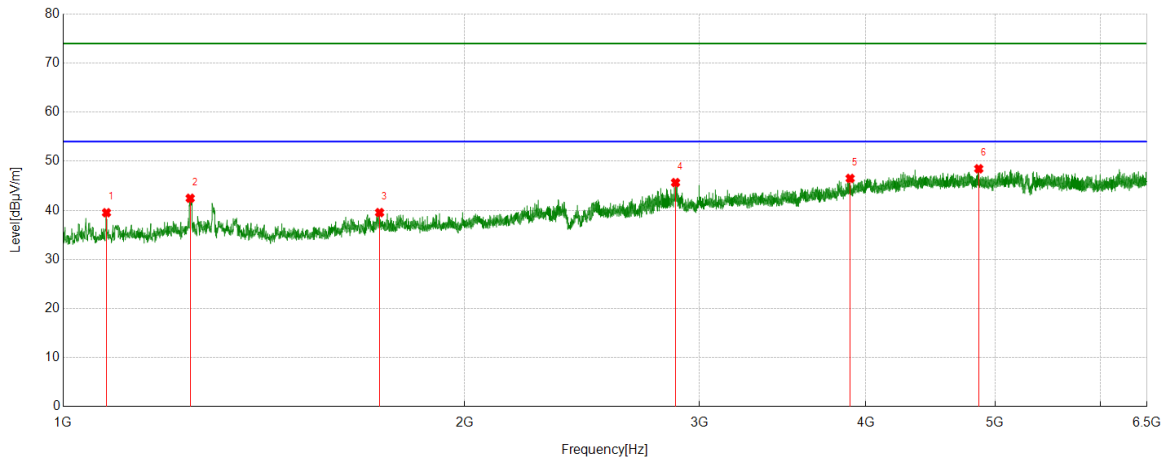
PK Result:

No.	Frequency	Reading Level	Correct Factor	Result	Limit	Margin	Remark
	[MHz]	[dBuV/m]	[dB]	[dBuV/m]	[dBuV/m]	[dB]	
1	1137.6896	43.81	-5.52	38.29	74.00	-35.71	Vertical
2	1294.7158	47.73	-5.79	41.94	74.00	-32.06	Vertical
3	1894.4824	43.11	-3.44	39.67	74.00	-34.33	Vertical
4	3080.8979	42.62	1.94	44.56	74.00	-29.44	Vertical
5	4242.2491	40.64	6.66	47.30	74.00	-26.70	Vertical
6	5120.4578	40.62	8.01	48.63	74.00	-25.37	Vertical

- Remark: 1. Measurement = Reading Level + Correct Factor.  
 2. If Peak Result complies with AV limit, AV Result is deemed to comply with AV limit.  
 3. Test setup: RBW: 1 MHz, VBW: 3 MHz, Sweep time: auto.  
 4. Peak: Peak detector.  
 5. AVG: VBW refer to section 6.2.  
 6. For below 6.5GHz part, filter losses were only considered in the spurious frequency bands and the authorized band were not corrected for Band Reject Filter losses.  
 The proper operation of the transmitter prior to adding the filter to the measurement chain.  
 7. Only the worst case emission was recorded, if it complies with the limit, the other emissions deemed to comply with the limit.



Test Mode	Channel	Polarization	Verdict
11AC20	5220	Horizontal	PASS



PK Result:

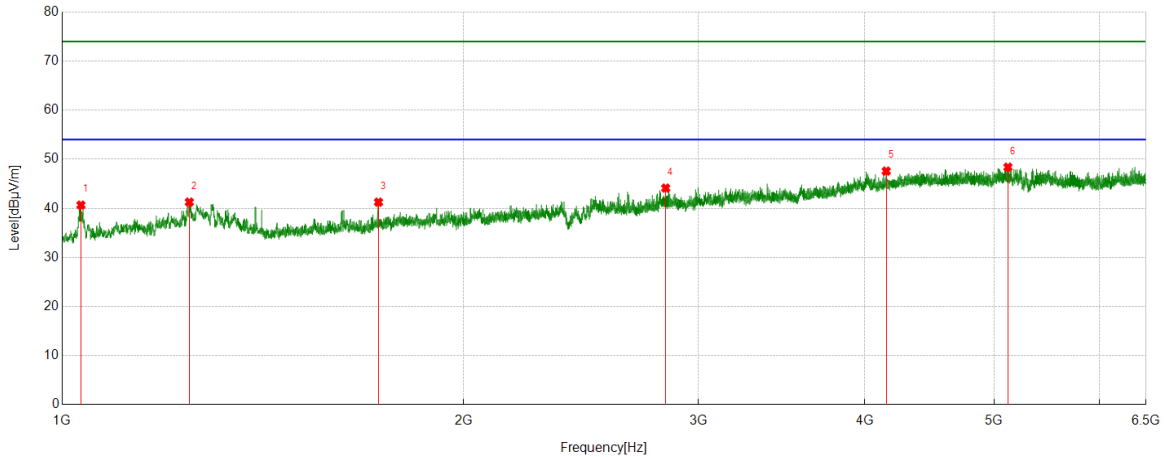
No.	Frequency	Reading Level	Correct Factor	Result	Limit	Margin	Remark
	[MHz]	[dBuV/m]	[dB]	[dBuV/m]	[dBuV/m]	[dB]	
1	1077.6796	44.92	-5.40	39.52	74.00	-34.48	Horizontal
2	1245.3742	48.08	-5.62	42.46	74.00	-31.54	Horizontal
3	1727.1212	43.93	-4.39	39.54	74.00	-34.46	Horizontal
4	2879.3132	45.37	0.28	45.65	74.00	-28.35	Horizontal
5	3892.5992	41.16	5.34	46.50	74.00	-27.50	Horizontal
6	4860.6512	41.12	7.35	48.47	74.00	-25.53	Horizontal

- Remark: 1. Measurement = Reading Level + Correct Factor.  
 2. If Peak Result complies with AV limit, AV Result is deemed to comply with AV limit.  
 3. Test setup: RBW: 1 MHz, VBW: 3 MHz, Sweep time: auto.  
 4. Peak: Peak detector.  
 5. AVG: VBW refer to section 6.2.  
 6. For below 6.5GHz part, filter losses were only considered in the spurious frequency bands and the authorized band were not corrected for Band Reject Filter losses.  
 The proper operation of the transmitter prior to adding the filter to the measurement chain.  
 7. Only the worst case emission was recorded, if it complies with the limit, the other emissions deemed to comply with the limit.





Test Mode	Channel	Polarization	Verdict
11AC20	5220	Vertical	PASS



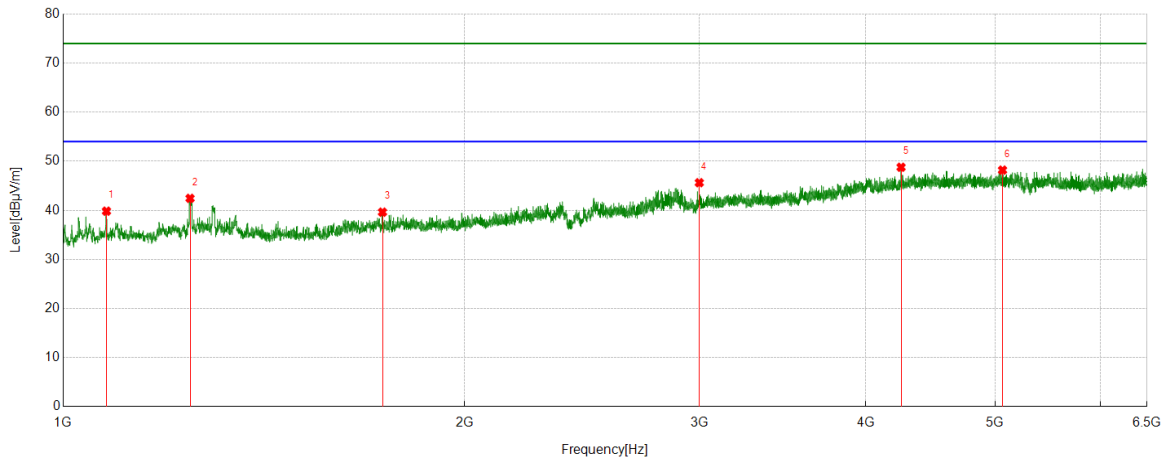
PK Result:

No.	Frequency	Reading Level	Correct Factor	Result	Limit	Margin	Remark
	[MHz]	[dBuV/m]	[dB]	[dBuV/m]	[dBuV/m]	[dB]	
1	1033.0055	45.72	-5.06	40.66	74.00	-33.34	Vertical
2	1245.7076	46.89	-5.62	41.27	74.00	-32.73	Vertical
3	1726.7878	45.64	-4.39	41.25	74.00	-32.75	Vertical
4	2835.6393	44.10	0.02	44.12	74.00	-29.88	Vertical
5	4150.0722	40.94	6.64	47.58	74.00	-26.42	Vertical
6	5120.8468	40.37	8.01	48.38	74.00	-25.62	Vertical

- Remark: 1. Measurement = Reading Level + Correct Factor.  
 2. If Peak Result complies with AV limit, AV Result is deemed to comply with AV limit.  
 3. Test setup: RBW: 1 MHz, VBW: 3 MHz, Sweep time: auto.  
 4. Peak: Peak detector.  
 5. AVG: VBW refer to section 6.2.  
 6. For below 6.5GHz part, filter losses were only considered in the spurious frequency bands and the authorized band were not corrected for Band Reject Filter losses.  
 The proper operation of the transmitter prior to adding the filter to the measurement chain.  
 7. Only the worst case emission was recorded, if it complies with the limit, the other emissions deemed to comply with the limit.



Test Mode	Channel	Polarization	Verdict
11AC20	5240	Horizontal	PASS



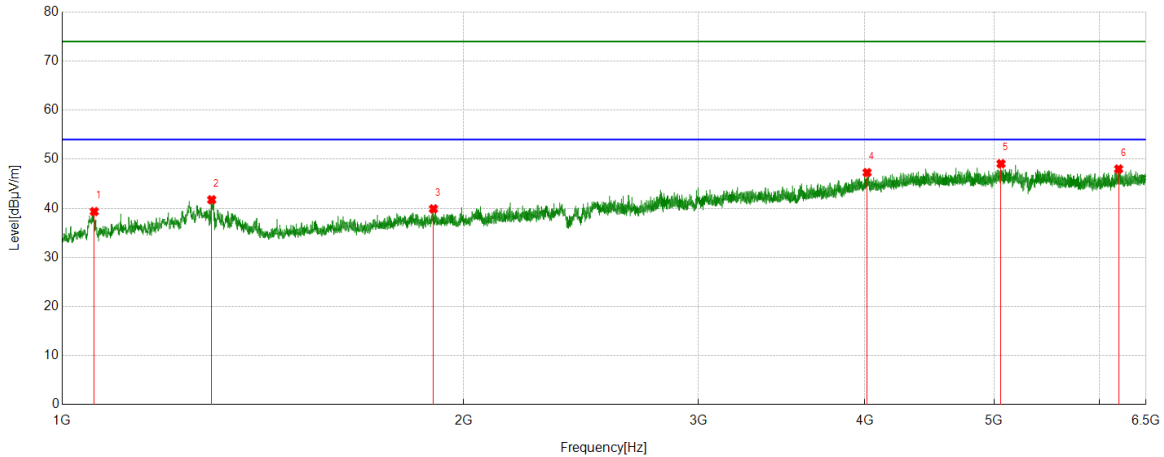
PK Result:

No.	Frequency	Reading Level	Correct Factor	Result	Limit	Margin	Remark
	[MHz]	[dBuV/m]	[dB]	[dBuV/m]	[dBuV/m]	[dB]	
1	1077.6796	45.23	-5.40	39.83	74.00	-34.17	Horizontal
2	1245.0408	48.06	-5.62	42.44	74.00	-31.56	Horizontal
3	1735.7893	44.11	-4.48	39.63	74.00	-34.37	Horizontal
4	3000.000	43.71	1.92	45.63	74.00	-28.37	Horizontal
5	4250.4167	41.94	6.84	48.78	74.00	-25.22	Horizontal
6	5064.4516	40.58	7.61	48.19	74.00	-25.81	Horizontal

- Remark: 1. Measurement = Reading Level + Correct Factor.  
 2. If Peak Result complies with AV limit, AV Result is deemed to comply with AV limit.  
 3. Test setup: RBW: 1 MHz, VBW: 3 MHz, Sweep time: auto.  
 4. Peak: Peak detector.  
 5. AVG: VBW refer to section 6.2.  
 6. For below 6.5GHz part, filter losses were only considered in the spurious frequency bands and the authorized band were not corrected for Band Reject Filter losses.  
 The proper operation of the transmitter prior to adding the filter to the measurement chain.  
 7. Only the worst case emission was recorded, if it complies with the limit, the other emissions deemed to comply with the limit.



Test Mode	Channel	Polarization	Verdict
11AC20	5240	Vertical	PASS



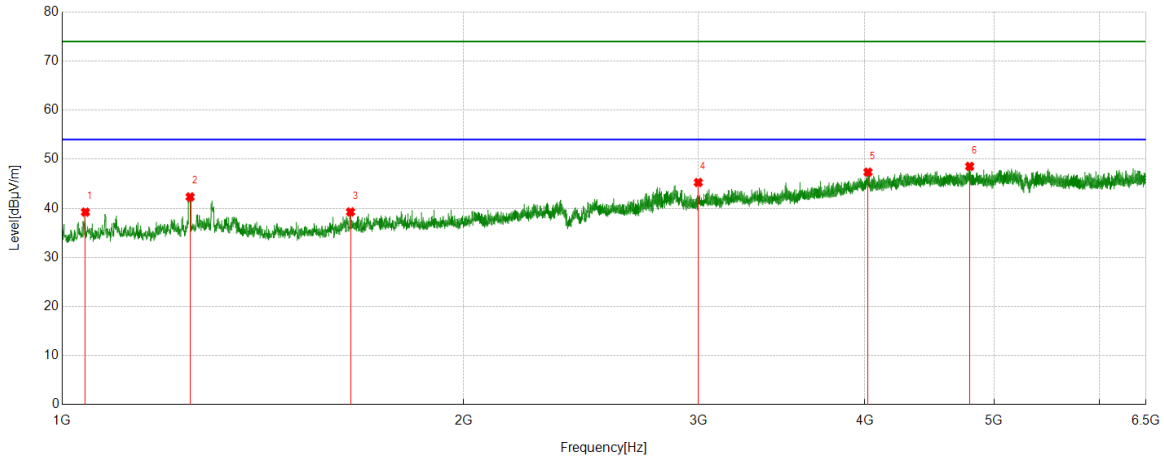
PK Result:

No.	Frequency	Reading Level	Correct Factor	Result	Limit	Margin	Remark
	[MHz]	[dBuV/m]	[dB]	[dBuV/m]	[dBuV/m]	[dB]	
1	1057.0095	44.95	-5.61	39.34	74.00	-34.66	Vertical
2	1294.7158	47.53	-5.79	41.74	74.00	-32.26	Vertical
3	1898.8165	43.20	-3.31	39.89	74.00	-34.11	Vertical
4	4015.1128	40.96	6.32	47.28	74.00	-26.72	Vertical
5	5060.1734	41.54	7.54	49.08	74.00	-24.92	Vertical
6	6199.3555	39.53	8.48	48.01	74.00	-25.99	Vertical

- Remark: 1. Measurement = Reading Level + Correct Factor.  
 2. If Peak Result complies with AV limit, AV Result is deemed to comply with AV limit.  
 3. Test setup: RBW: 1 MHz, VBW: 3 MHz, Sweep time: auto.  
 4. Peak: Peak detector.  
 5. AVG: VBW refer to section 6.2.  
 6. For below 6.5GHz part, filter losses were only considered in the spurious frequency bands and the authorized band were not corrected for Band Reject Filter losses.  
 The proper operation of the transmitter prior to adding the filter to the measurement chain.  
 7. Only the worst case emission was recorded, if it complies with the limit, the other emissions deemed to comply with the limit.



Test Mode	Channel	Polarization	Verdict
11AC20	5260	Horizontal	PASS



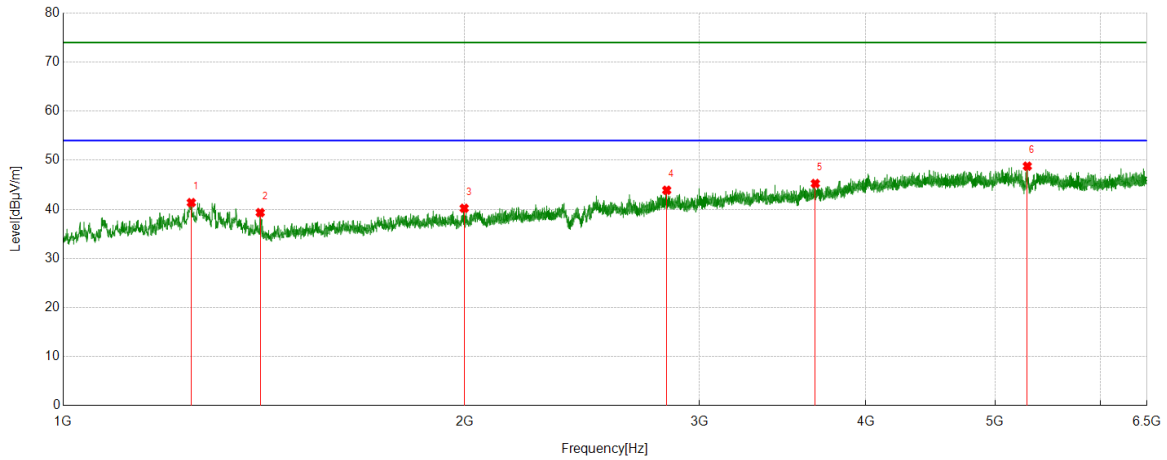
PK Result:

No.	Frequency	Reading Level	Correct Factor	Result	Limit	Margin	Remark
	[MHz]	[dBuV/m]	[dB]	[dBuV/m]	[dBuV/m]	[dB]	
1	1041.0068	44.63	-5.40	39.23	74.00	-34.77	Horizontal
2	1247.3746	47.97	-5.64	42.33	74.00	-31.67	Horizontal
3	1645.4409	44.28	-5.01	39.27	74.00	-34.73	Horizontal
4	3000	43.35	1.92	45.27	74.00	-28.73	Horizontal
5	4021.7246	40.90	6.47	47.37	74.00	-26.63	Horizontal
6	4793.3659	40.76	7.78	48.54	74.00	-25.46	Horizontal

- Remark: 1. Measurement = Reading Level + Correct Factor.  
 2. If Peak Result complies with AV limit, AV Result is deemed to comply with AV limit.  
 3. Test setup: RBW: 1 MHz, VBW: 3 MHz, Sweep time: auto.  
 4. Peak: Peak detector.  
 5. AVG: VBW refer to section 6.2.  
 6. For below 6.5GHz part, filter losses were only considered in the spurious frequency bands and the authorized band were not corrected for Band Reject Filter losses.  
 The proper operation of the transmitter prior to adding the filter to the measurement chain.  
 7. Only the worst case emission was recorded, if it complies with the limit, the other emissions deemed to comply with the limit.



Test Mode	Channel	Polarization	Verdict
11AC20	5260	Vertical	PASS



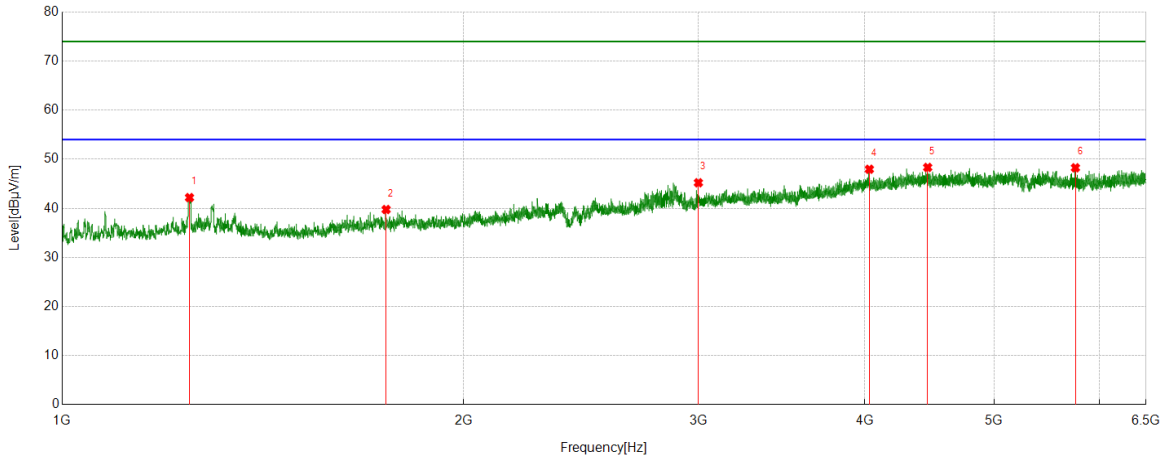
PK Result:

No.	Frequency	Reading Level	Correct Factor	Result	Limit	Margin	Remark
	[MHz]	[dBuV/m]	[dB]	[dBuV/m]	[dBuV/m]	[dB]	
1	1247.708	47.00	-5.64	41.36	74.00	-32.64	Vertical
2	1405.4009	44.82	-5.49	39.33	74.00	-34.67	Vertical
3	1998.8331	43.21	-3.00	40.21	74.00	-33.79	Vertical
4	2835.6393	43.87	0.02	43.89	74.00	-30.11	Vertical
5	3665.4628	41.09	4.17	45.26	74.00	-28.74	Vertical
6	5286.1429	40.96	7.83	48.79	74.00	-25.21	Vertical

- Remark: 1. Measurement = Reading Level + Correct Factor.  
 2. If Peak Result complies with AV limit, AV Result is deemed to comply with AV limit.  
 3. Test setup: RBW: 1 MHz, VBW: 3 MHz, Sweep time: auto.  
 4. Peak: Peak detector.  
 5. AVG: VBW refer to section 6.2.  
 6. For below 6.5GHz part, filter losses were only considered in the spurious frequency bands and the authorized band were not corrected for Band Reject Filter losses.  
 The proper operation of the transmitter prior to adding the filter to the measurement chain.  
 7. Only the worst case emission was recorded, if it complies with the limit, the other emissions deemed to comply with the limit.



Test Mode	Channel	Polarization	Verdict
11AC20	5280	Horizontal	PASS



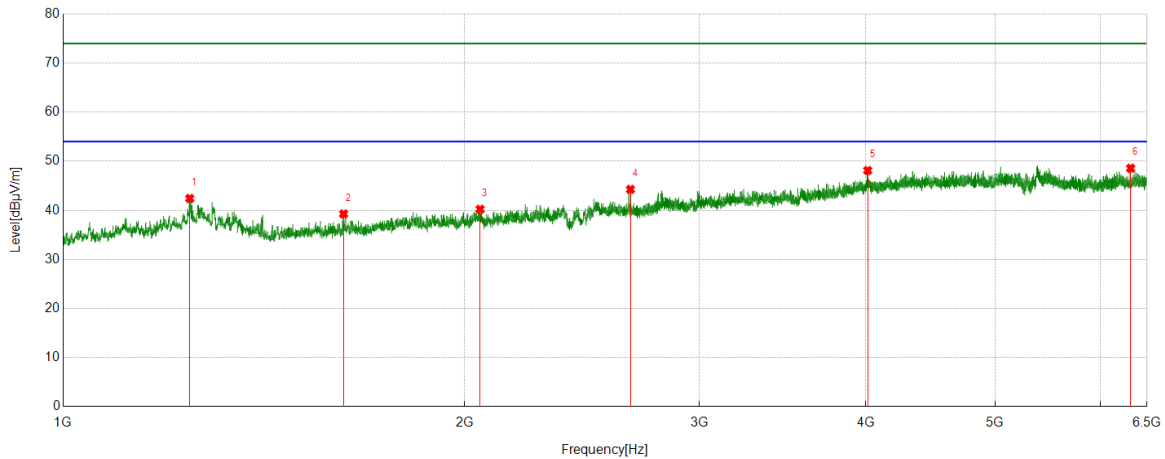
PK Result:

No.	Frequency	Reading Level	Correct Factor	Result	Limit	Margin	Remark
	[MHz]	[dBuV/m]	[dB]	[dBuV/m]	[dBuV/m]	[dB]	
1	1246.041	47.82	-5.63	42.19	74.00	-31.81	Horizontal
2	1749.7916	44.24	-4.48	39.76	74.00	-34.24	Horizontal
3	3000.3889	43.30	1.91	45.21	74.00	-28.79	Horizontal
4	4031.059	41.76	6.20	47.96	74.00	-26.04	Horizontal
5	4458.1065	41.00	7.33	48.33	74.00	-25.67	Horizontal
6	5753.6393	40.77	7.49	48.26	74.00	-25.74	Horizontal

- Remark: 1. Measurement = Reading Level + Correct Factor.  
 2. If Peak Result complies with AV limit, AV Result is deemed to comply with AV limit.  
 3. Test setup: RBW: 1 MHz, VBW: 3 MHz, Sweep time: auto.  
 4. Peak: Peak detector.  
 5. AVG: VBW refer to section 6.2.  
 6. For below 6.5GHz part, filter losses were only considered in the spurious frequency bands and the authorized band were not corrected for Band Reject Filter losses.  
 The proper operation of the transmitter prior to adding the filter to the measurement chain.  
 7. Only the worst case emission was recorded, if it complies with the limit, the other emissions deemed to comply with the limit.



Test Mode	Channel	Polarization	Verdict
11AC20	5280	Vertical	PASS



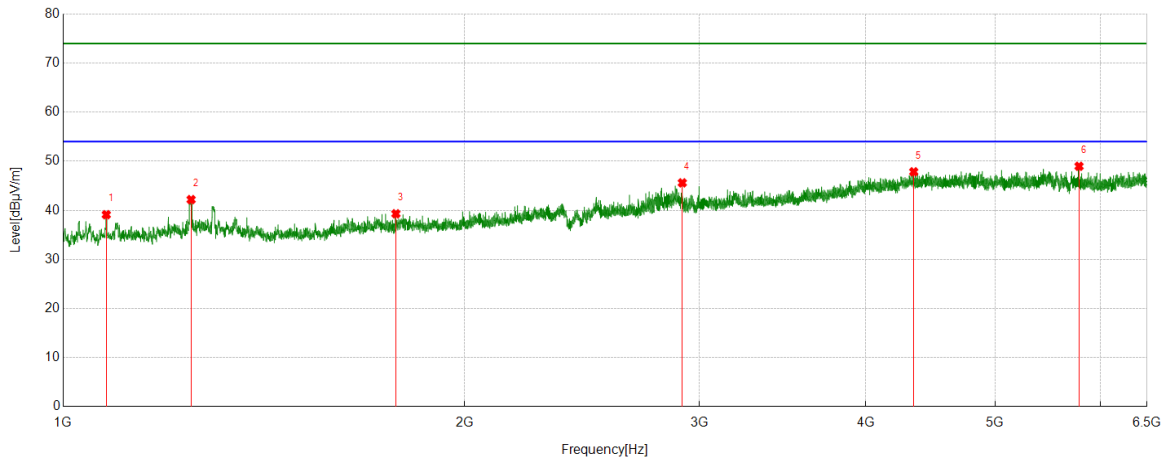
PK Result:

No.	Frequency	Reading Level	Correct Factor	Result	Limit	Margin	Remark
	[MHz]	[dBuV/m]	[dB]	[dBuV/m]	[dBuV/m]	[dB]	
1	1244.3741	48.03	-5.61	42.42	74.00	-31.58	Vertical
2	1623.1039	44.30	-5.03	39.27	74.00	-34.73	Vertical
3	2054.5091	42.71	-2.50	40.21	74.00	-33.79	Vertical
4	2663.6106	44.96	-0.69	44.27	74.00	-29.73	Vertical
5	4012.3903	41.91	6.21	48.12	74.00	-25.88	Vertical
6	6318.3687	40.01	8.57	48.58	74.00	-25.42	Vertical

- Remark: 1. Measurement = Reading Level + Correct Factor.  
 2. If Peak Result complies with AV limit, AV Result is deemed to comply with AV limit.  
 3. Test setup: RBW: 1 MHz, VBW: 3 MHz, Sweep time: auto.  
 4. Peak: Peak detector.  
 5. AVG: VBW refer to section 6.2.  
 6. For below 6.5GHz part, filter losses were only considered in the spurious frequency bands and the authorized band were not corrected for Band Reject Filter losses.  
 The proper operation of the transmitter prior to adding the filter to the measurement chain.  
 7. Only the worst case emission was recorded, if it complies with the limit, the other emissions deemed to comply with the limit.



Test Mode	Channel	Polarization	Verdict
11AC20	5300	Horizontal	PASS



PK Result:

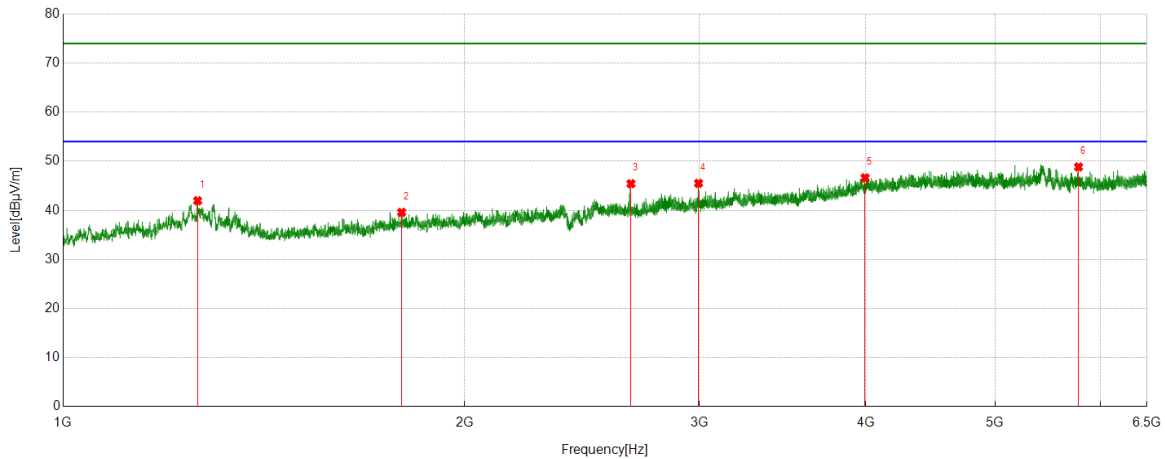
No.	Frequency	Reading Level	Correct Factor	Result	Limit	Margin	Remark
	[MHz]	[dBuV/m]	[dB]	[dBuV/m]	[dBuV/m]	[dB]	
1	1077.3462	44.51	-5.40	39.11	74.00	-34.89	Horizontal
2	1247.3746	47.83	-5.64	42.19	74.00	-31.81	Horizontal
3	1776.4627	43.32	-4.02	39.30	74.00	-34.70	Horizontal
4	2913.3189	45.10	0.50	45.60	74.00	-28.40	Horizontal
5	4344.1494	40.83	7.02	47.85	74.00	-26.15	Horizontal
6	5780.0867	40.78	8.19	48.97	74.00	-25.03	Horizontal

- Remark: 1. Measurement = Reading Level + Correct Factor.  
 2. If Peak Result complies with AV limit, AV Result is deemed to comply with AV limit.  
 3. Test setup: RBW: 1 MHz, VBW: 3 MHz, Sweep time: auto.  
 4. Peak: Peak detector.  
 5. AVG: VBW refer to section 6.2.  
 6. For below 6.5GHz part, filter losses were only considered in the spurious frequency bands and the authorized band were not corrected for Band Reject Filter losses.  
 The proper operation of the transmitter prior to adding the filter to the measurement chain.  
 7. Only the worst case emission was recorded, if it complies with the limit, the other emissions deemed to comply with the limit.





Test Mode	Channel	Polarization	Verdict
11AC20	5300	Vertical	PASS



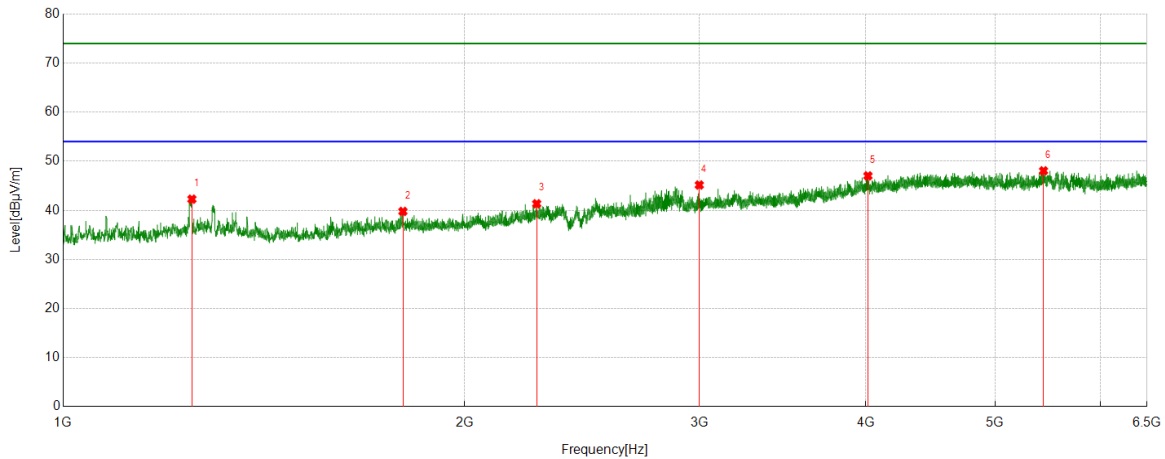
PK Result:

No.	Frequency	Reading Level	Correct Factor	Result	Limit	Margin	Remark
	[MHz]	[dBuV/m]	[dB]	[dBuV/m]	[dBuV/m]	[dB]	
1	1261.3769	47.62	-5.67	41.95	74.00	-32.05	Vertical
2	1794.1324	43.37	-3.78	39.59	74.00	-34.41	Vertical
3	2665.9443	46.14	-0.71	45.43	74.00	-28.57	Vertical
4	2995.9993	44.69	0.82	45.51	74.00	-28.49	Vertical
5	3994.4994	40.98	5.64	46.62	74.00	-27.38	Vertical
6	5775.0306	40.65	8.19	48.84	74.00	-25.16	Vertical

- Remark: 1. Measurement = Reading Level + Correct Factor.  
 2. If Peak Result complies with AV limit, AV Result is deemed to comply with AV limit.  
 3. Test setup: RBW: 1 MHz, VBW: 3 MHz, Sweep time: auto.  
 4. Peak: Peak detector.  
 5. AVG: VBW refer to section 6.2.  
 6. For below 6.5GHz part, filter losses were only considered in the spurious frequency bands and the authorized band were not corrected for Band Reject Filter losses.  
 The proper operation of the transmitter prior to adding the filter to the measurement chain.  
 7. Only the worst case emission was recorded, if it complies with the limit, the other emissions deemed to comply with the limit.



Test Mode	Channel	Polarization	Verdict
11AC20	5320	Horizontal	PASS



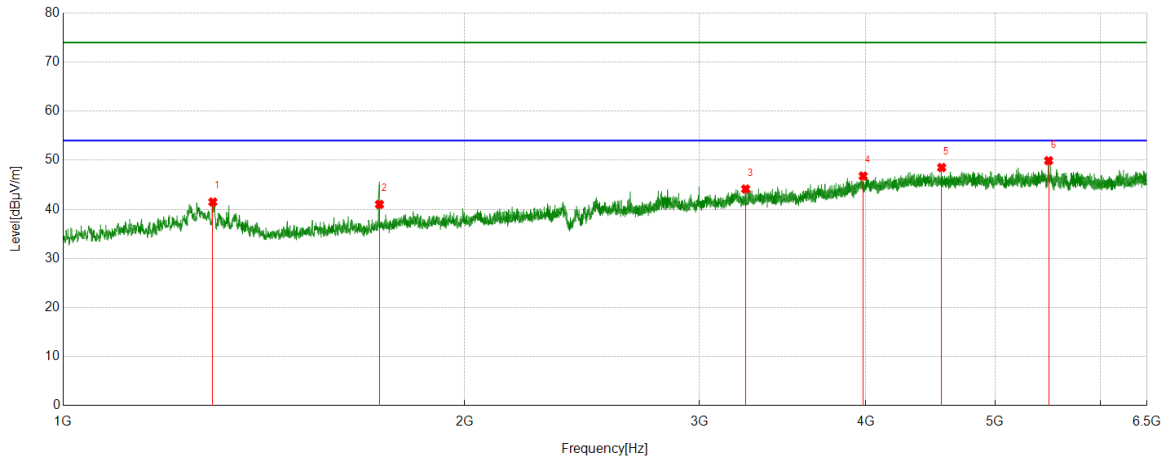
PK Result:

No.	Frequency	Reading Level	Correct Factor	Result	Limit	Margin	Remark
	[MHz]	[dBuV/m]	[dB]	[dBuV/m]	[dBuV/m]	[dB]	
1	1249.0415	47.93	-5.65	42.28	74.00	-31.72	Horizontal
2	1798.133	43.61	-3.83	39.78	74.00	-34.22	Horizontal
3	2265.5443	43.45	-2.11	41.34	74.00	-32.66	Horizontal
4	3000.0000	43.25	1.91	45.16	74.00	-28.84	Horizontal
5	4014.3349	40.91	6.11	47.02	74.00	-26.98	Horizontal
6	5436.2707	39.54	8.51	48.05	74.00	-25.95	Horizontal

- Remark: 1. Measurement = Reading Level + Correct Factor.  
 2. If Peak Result complies with AV limit, AV Result is deemed to comply with AV limit.  
 3. Test setup: RBW: 1 MHz, VBW: 3 MHz, Sweep time: auto.  
 4. Peak: Peak detector.  
 5. AVG: VBW refer to section 6.2.  
 6. For below 6.5GHz part, filter losses were only considered in the spurious frequency bands and the authorized band were not corrected for Band Reject Filter losses.  
 The proper operation of the transmitter prior to adding the filter to the measurement chain.  
 7. Only the worst case emission was recorded, if it complies with the limit, the other emissions deemed to comply with the limit.



Test Mode	Channel	Polarization	Verdict
11AC20	5320	Vertical	PASS



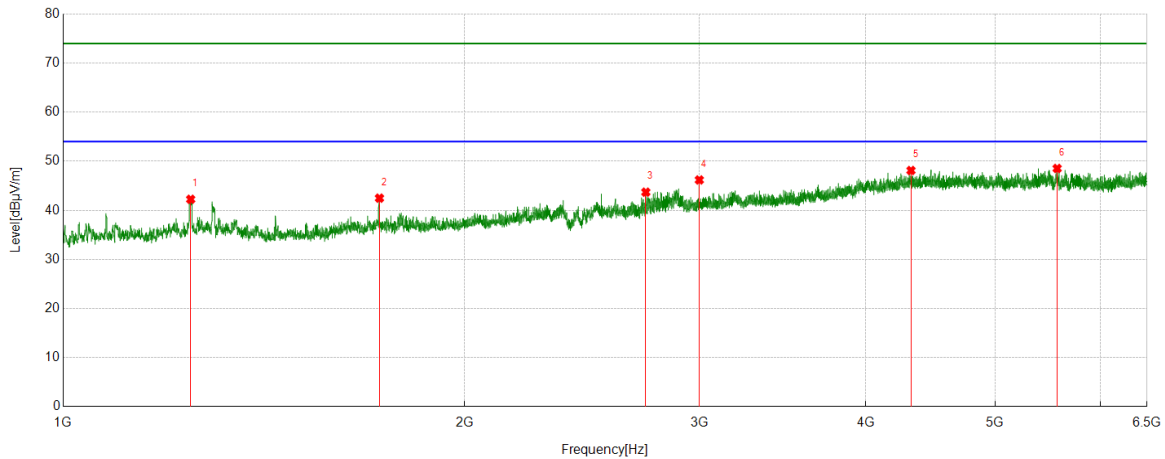
PK Result:

No.	Frequency	Reading Level	Correct Factor	Result	Limit	Margin	Remark
	[MHz]	[dBuV/m]	[dB]	[dBuV/m]	[dBuV/m]	[dB]	
1	1295.0492	47.28	-5.79	41.49	74.00	-32.51	Vertical
2	1726.7878	45.39	-4.39	41.00	74.00	-33.00	Vertical
3	3250.0833	41.93	2.21	44.14	74.00	-29.86	Vertical
4	3981.2757	41.09	5.69	46.78	74.00	-27.22	Vertical
5	4559.2288	41.34	7.18	48.52	74.00	-25.48	Vertical
6	5484.1093	41.45	8.46	49.91	74.00	-24.09	Vertical

- Remark: 1. Measurement = Reading Level + Correct Factor.  
 2. If Peak Result complies with AV limit, AV Result is deemed to comply with AV limit.  
 3. Test setup: RBW: 1 MHz, VBW: 3 MHz, Sweep time: auto.  
 4. Peak: Peak detector.  
 5. AVG: VBW refer to section 6.2.  
 6. For below 6.5GHz part, filter losses were only considered in the spurious frequency bands and the authorized band were not corrected for Band Reject Filter losses.  
 The proper operation of the transmitter prior to adding the filter to the measurement chain.  
 7. Only the worst case emission was recorded, if it complies with the limit, the other emissions deemed to comply with the limit.



Test Mode	Channel	Polarization	Verdict
11AC20	5500	Horizontal	PASS



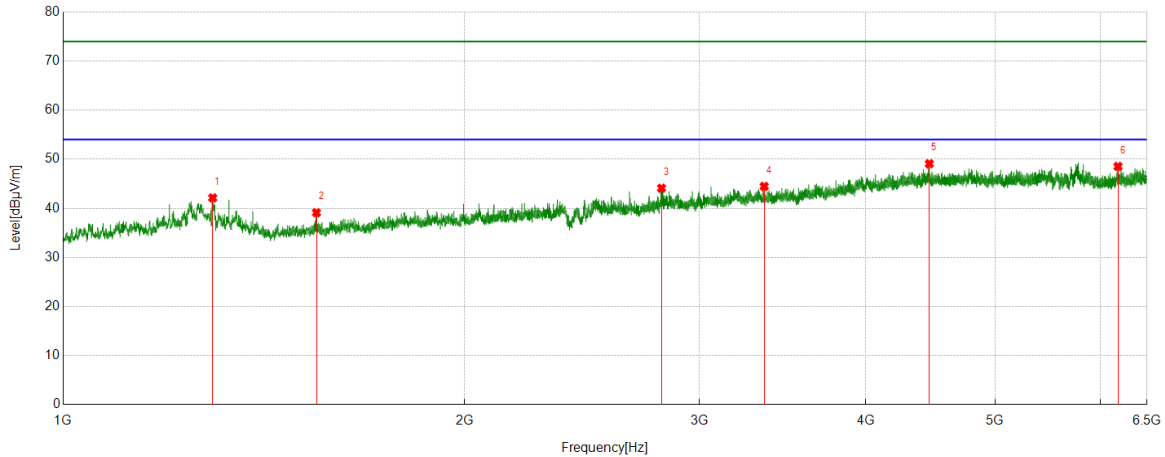
PK Result:

No.	Frequency	Reading Level	Correct Factor	Result	Limit	Margin	Remark
	[MHz]	[dBuV/m]	[dB]	[dBuV/m]	[dBuV/m]	[dB]	
1	1246.3744	47.88	-5.63	42.25	74.00	-31.75	Horizontal
2	1726.7878	46.87	-4.39	42.48	74.00	-31.52	Horizontal
3	2735.2892	44.17	-0.47	43.70	74.00	-30.30	Horizontal
4	3000	44.28	1.91	46.19	74.00	-27.81	Horizontal
5	4323.9249	41.34	6.78	48.12	74.00	-25.88	Horizontal
6	5565.3962	40.17	8.36	48.53	74.00	-25.47	Horizontal

- Remark: 1. Measurement = Reading Level + Correct Factor.  
 2. If Peak Result complies with AV limit, AV Result is deemed to comply with AV limit.  
 3. Test setup: RBW: 1 MHz, VBW: 3 MHz, Sweep time: auto.  
 4. Peak: Peak detector.  
 5. AVG: VBW refer to section 6.2.  
 6. For below 6.5GHz part, filter losses were only considered in the spurious frequency bands and the authorized band were not corrected for Band Reject Filter losses.  
 The proper operation of the transmitter prior to adding the filter to the measurement chain.  
 7. Only the worst case emission was recorded, if it complies with the limit, the other emissions deemed to comply with the limit.



Test Mode	Channel	Polarization	Verdict
11AC20	5500	Vertical	PASS



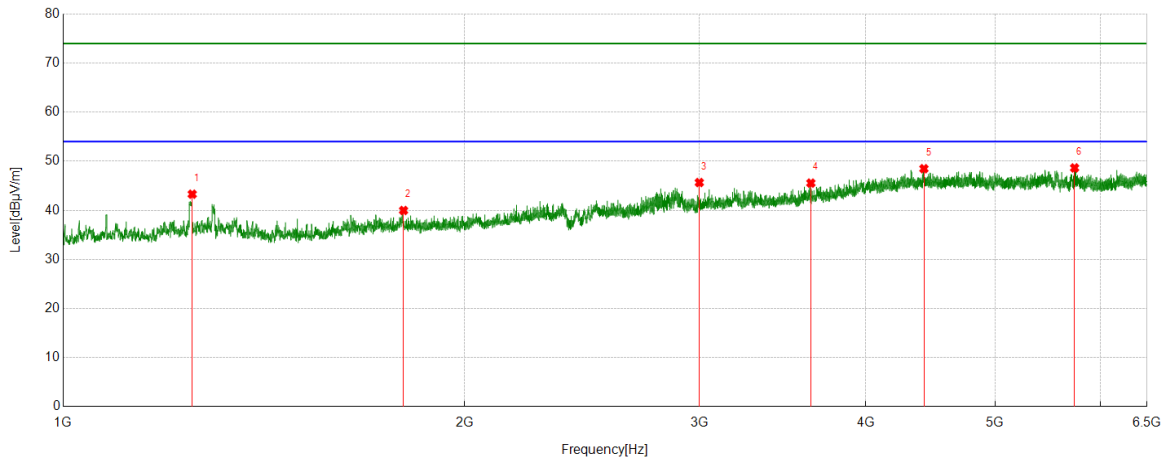
PK Result:

No.	Frequency	Reading Level	Correct Factor	Result	Limit	Margin	Remark
	[MHz]	[dBuV/m]	[dB]	[dBuV/m]	[dBuV/m]	[dB]	
1	1294.7158	47.92	-5.79	42.13	74.00	-31.87	Vertical
2	1548.7581	44.56	-5.44	39.12	74.00	-34.88	Vertical
3	2810.6351	44.33	-0.23	44.10	74.00	-29.90	Vertical
4	3355.4839	41.82	2.65	44.47	74.00	-29.53	Vertical
5	4463.1626	41.82	7.27	49.09	74.00	-24.91	Vertical
6	6181.8535	40.20	8.34	48.54	74.00	-25.46	Vertical

- Remark: 1. Measurement = Reading Level + Correct Factor.  
 2. If Peak Result complies with AV limit, AV Result is deemed to comply with AV limit.  
 3. Test setup: RBW: 1 MHz, VBW: 3 MHz, Sweep time: auto.  
 4. Peak: Peak detector.  
 5. AVG: VBW refer to section 6.2.  
 6. For below 6.5GHz part, filter losses were only considered in the spurious frequency bands and the authorized band were not corrected for Band Reject Filter losses.  
 The proper operation of the transmitter prior to adding the filter to the measurement chain.  
 7. Only the worst case emission was recorded, if it complies with the limit, the other emissions deemed to comply with the limit.



Test Mode	Channel	Polarization	Verdict
11AC20	5520	Horizontal	PASS



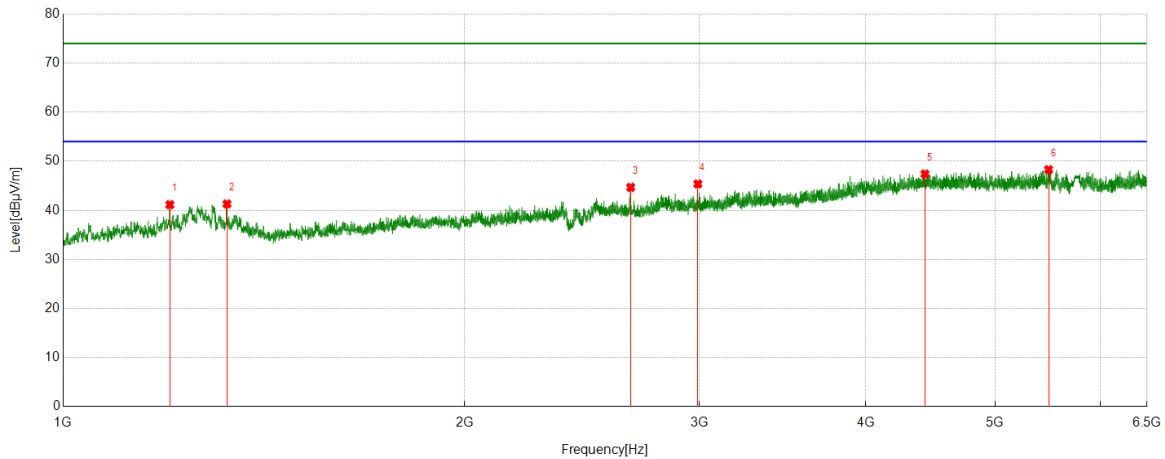
PK Result:

No.	Frequency	Reading Level	Correct Factor	Result	Limit	Margin	Remark
	[MHz]	[dBuV/m]	[dB]	[dBuV/m]	[dBuV/m]	[dB]	
1	1249.7083	48.95	-5.66	43.29	74.00	-30.71	Horizontal
2	1800.1334	43.82	-3.85	39.97	74.00	-34.03	Horizontal
3	3000	43.75	1.91	45.66	74.00	-28.34	Horizontal
4	3637.4597	41.68	3.87	45.55	74.00	-28.45	Horizontal
5	4421.5468	41.08	7.40	48.48	74.00	-25.52	Horizontal
6	5735.3595	40.42	8.22	48.64	74.00	-25.36	Horizontal

- Remark: 1. Measurement = Reading Level + Correct Factor.  
 2. If Peak Result complies with AV limit, AV Result is deemed to comply with AV limit.  
 3. Test setup: RBW: 1 MHz, VBW: 3 MHz, Sweep time: auto.  
 4. Peak: Peak detector.  
 5. AVG: VBW refer to section 6.2.  
 6. For below 6.5GHz part, filter losses were only considered in the spurious frequency bands and the authorized band were not corrected for Band Reject Filter losses.  
 The proper operation of the transmitter prior to adding the filter to the measurement chain.  
 7. Only the worst case emission was recorded, if it complies with the limit, the other emissions deemed to comply with the limit.



Test Mode	Channel	Polarization	Verdict
11AC20	5520	Vertical	PASS



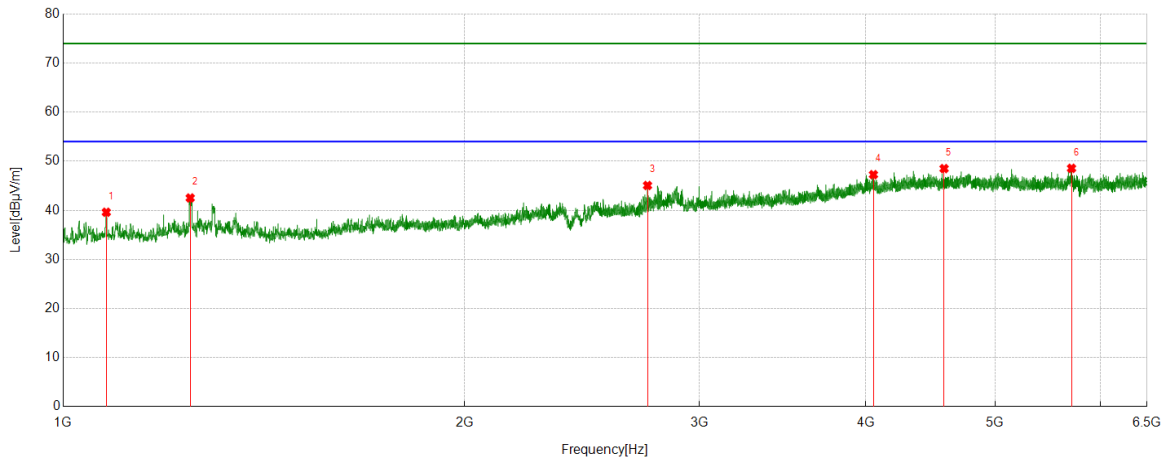
PK Result:

No.	Frequency	Reading Level	Correct Factor	Result	Limit	Margin	Remark
	[MHz]	[dBuV/m]	[dB]	[dBuV/m]	[dBuV/m]	[dB]	
1	1202.3671	46.65	-5.50	41.15	74.00	-32.85	Vertical
2	1327.0545	46.97	-5.66	41.31	74.00	-32.69	Vertical
3	2664.6108	45.38	-0.70	44.68	74.00	-29.32	Vertical
4	2992.3321	44.53	0.85	45.38	74.00	-28.62	Vertical
5	4429.7144	40.22	7.18	47.40	74.00	-26.60	Vertical
6	5484.1093	39.83	8.46	48.29	74.00	-25.71	Vertical

- Remark: 1. Measurement = Reading Level + Correct Factor.  
 2. If Peak Result complies with AV limit, AV Result is deemed to comply with AV limit.  
 3. Test setup: RBW: 1 MHz, VBW: 3 MHz, Sweep time: auto.  
 4. Peak: Peak detector.  
 5. AVG: VBW refer to section 6.2.  
 6. For below 6.5GHz part, filter losses were only considered in the spurious frequency bands and the authorized band were not corrected for Band Reject Filter losses.  
 The proper operation of the transmitter prior to adding the filter to the measurement chain.  
 7. Only the worst case emission was recorded, if it complies with the limit, the other emissions deemed to comply with the limit.



Test Mode	Channel	Polarization	Verdict
11AC20	5600	Horizontal	PASS



PK Result:

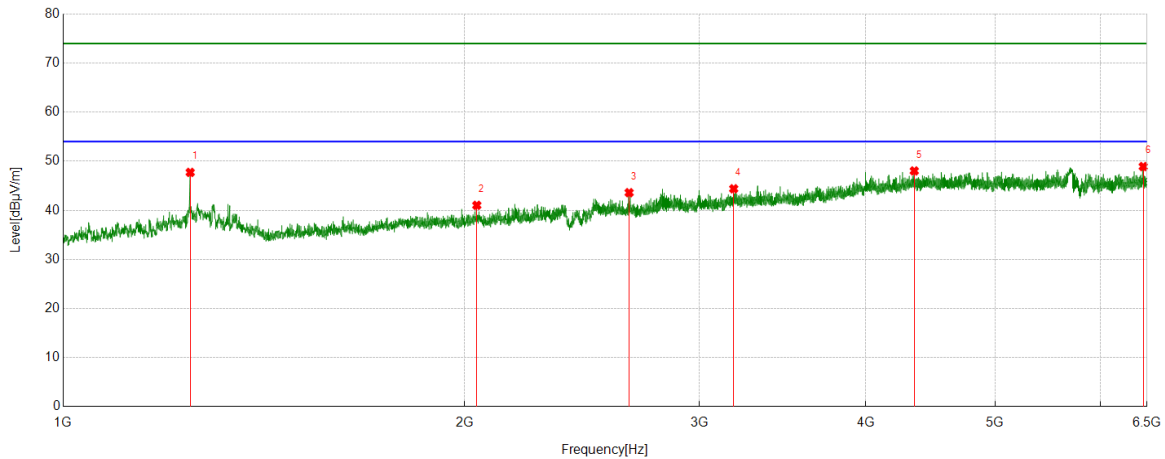
No.	Frequency	Reading Level	Correct Factor	Result	Limit	Margin	Remark
	[MHz]	[dBuV/m]	[dB]	[dBuV/m]	[dBuV/m]	[dB]	
1	1077.3462	45.01	-5.40	39.61	74.00	-34.39	Horizontal
2	1245.3742	48.14	-5.62	42.52	74.00	-31.48	Horizontal
3	2743.2905	45.51	-0.45	45.06	74.00	-28.94	Horizontal
4	4052.4503	41.19	6.08	47.27	74.00	-26.73	Horizontal
5	4578.2865	41.57	6.93	48.50	74.00	-25.50	Horizontal
6	5705.4117	40.73	7.83	48.56	74.00	-25.44	Horizontal

- Remark: 1. Measurement = Reading Level + Correct Factor.  
 2. If Peak Result complies with AV limit, AV Result is deemed to comply with AV limit.  
 3. Test setup: RBW: 1 MHz, VBW: 3 MHz, Sweep time: auto.  
 4. Peak: Peak detector.  
 5. AVG: VBW refer to section 6.2.  
 6. For below 6.5GHz part, filter losses were only considered in the spurious frequency bands and the authorized band were not corrected for Band Reject Filter losses.  
 The proper operation of the transmitter prior to adding the filter to the measurement chain.  
 7. Only the worst case emission was recorded, if it complies with the limit, the other emissions deemed to comply with the limit.





Test Mode	Channel	Polarization	Verdict
11AC20	5600	Vertical	PASS



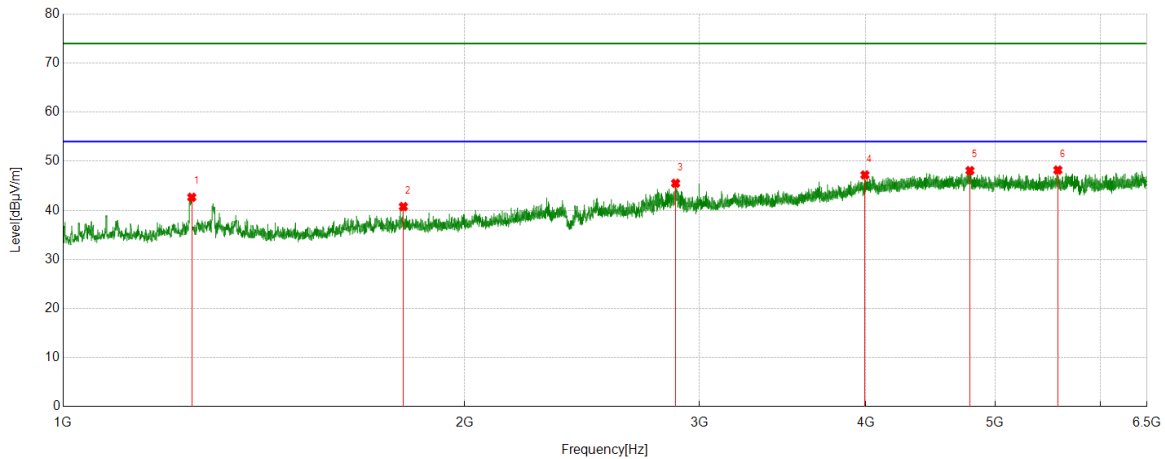
PK Result:

No.	Frequency	Reading Level	Correct Factor	Result	Limit	Margin	Remark
	[MHz]	[dBuV/m]	[dB]	[dBuV/m]	[dBuV/m]	[dB]	
1	1245.3742	53.35	-5.62	47.73	74.00	-30.88	Vertical
2	2042.8405	43.41	-2.39	41.02	74.00	-32.98	Vertical
3	2657.6096	44.30	-0.70	43.60	74.00	-30.40	Vertical
4	3183.576	41.97	2.42	44.39	74.00	-29.61	Vertical
5	4348.4276	41.15	6.88	48.03	74.00	-25.97	Vertical
6	6457.6064	39.42	9.50	48.92	74.00	-25.08	Vertical

- Remark: 1. Measurement = Reading Level + Correct Factor.  
 2. If Peak Result complies with AV limit, AV Result is deemed to comply with AV limit.  
 3. Test setup: RBW: 1 MHz, VBW: 3 MHz, Sweep time: auto.  
 4. Peak: Peak detector.  
 5. AVG: VBW refer to section 6.2.  
 6. For below 6.5GHz part, filter losses were only considered in the spurious frequency bands and the authorized band were not corrected for Band Reject Filter losses.  
 The proper operation of the transmitter prior to adding the filter to the measurement chain.  
 7. Only the worst case emission was recorded, if it complies with the limit, the other emissions deemed to comply with the limit.



Test Mode	Channel	Polarization	Verdict
11AC20	5680	Horizontal	PASS



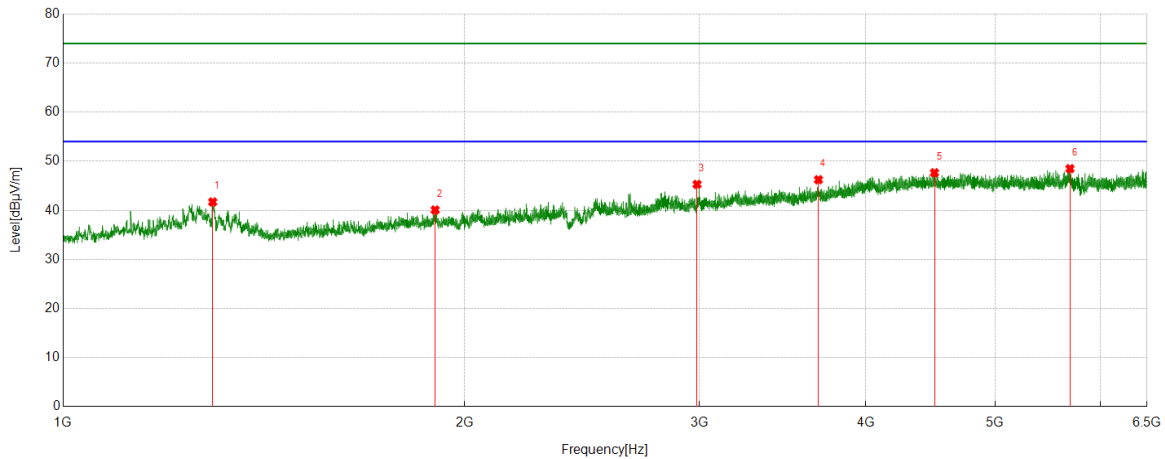
PK Result:

No.	Frequency	Reading Level	Correct Factor	Result	Limit	Margin	Remark
	[MHz]	[dBuV/m]	[dB]	[dBuV/m]	[dBuV/m]	[dB]	
1	1248.7081	48.31	-5.65	42.66	74.00	-31.34	Horizontal
2	1799.4666	44.60	-3.84	40.76	74.00	-33.24	Horizontal
3	2879.6466	45.22	0.29	45.51	74.00	-28.49	Horizontal
4	3993.3326	41.79	5.42	47.21	74.00	-26.79	Horizontal
5	4787.5319	40.35	7.74	48.09	74.00	-25.91	Horizontal
6	5572.3969	40.84	7.36	48.20	74.00	-25.80	Horizontal

- Remark: 1. Measurement = Reading Level + Correct Factor.  
 2. If Peak Result complies with AV limit, AV Result is deemed to comply with AV limit.  
 3. Test setup: RBW: 1 MHz, VBW: 3 MHz, Sweep time: auto.  
 4. Peak: Peak detector.  
 5. AVG: VBW refer to section 6.2.  
 6. For below 6.5GHz part, filter losses were only considered in the spurious frequency bands and the authorized band were not corrected for Band Reject Filter losses.  
 The proper operation of the transmitter prior to adding the filter to the measurement chain.  
 7. Only the worst case emission was recorded, if it complies with the limit, the other emissions deemed to comply with the limit.



Test Mode	Channel	Polarization	Verdict
11AC20	5680	Vertical	PASS



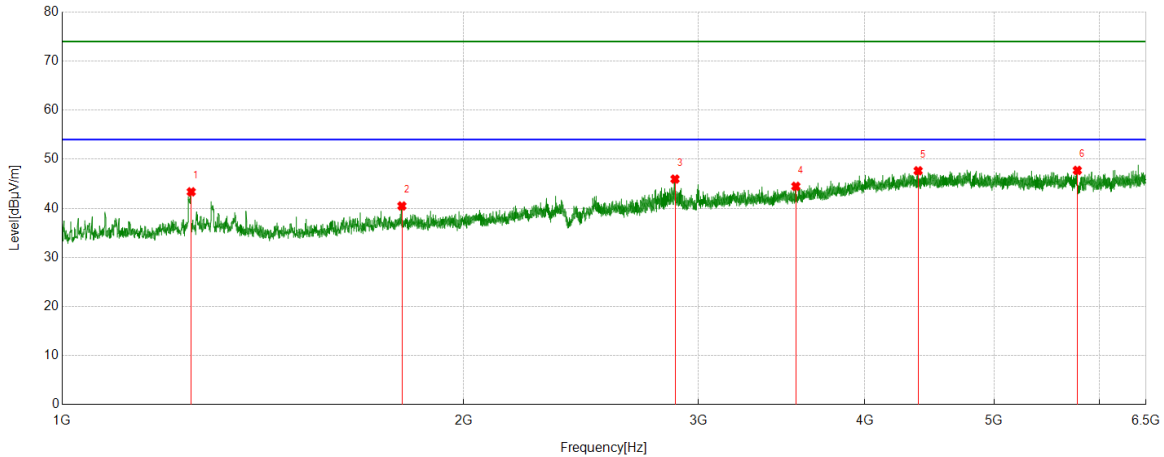
PK Result:

No.	Frequency	Reading Level	Correct Factor	Result	Limit	Margin	Remark
	[MHz]	[dBuV/m]	[dB]	[dBuV/m]	[dBuV/m]	[dB]	
1	1294.7158	47.50	-5.79	41.71	74.00	-32.29	Vertical
2	1901.1502	43.35	-3.28	40.07	74.00	-33.93	Vertical
3	2988.3314	44.45	0.84	45.29	74.00	-28.71	Vertical
4	3685.2984	41.65	4.59	46.24	74.00	-27.76	Vertical
5	4502.8336	40.45	7.21	47.66	74.00	-26.34	Vertical
6	5690.2434	40.49	8.00	48.49	74.00	-25.51	Vertical

- Remark: 1. Measurement = Reading Level + Correct Factor.  
 2. If Peak Result complies with AV limit, AV Result is deemed to comply with AV limit.  
 3. Test setup: RBW: 1 MHz, VBW: 3 MHz, Sweep time: auto.  
 4. Peak: Peak detector.  
 5. AVG: VBW refer to section 6.2.  
 6. For below 6.5GHz part, filter losses were only considered in the spurious frequency bands and the authorized band were not corrected for Band Reject Filter losses.  
 The proper operation of the transmitter prior to adding the filter to the measurement chain.  
 7. Only the worst case emission was recorded, if it complies with the limit, the other emissions deemed to comply with the limit.



Test Mode	Channel	Polarization	Verdict
11AC20	5700	Horizontal	PASS



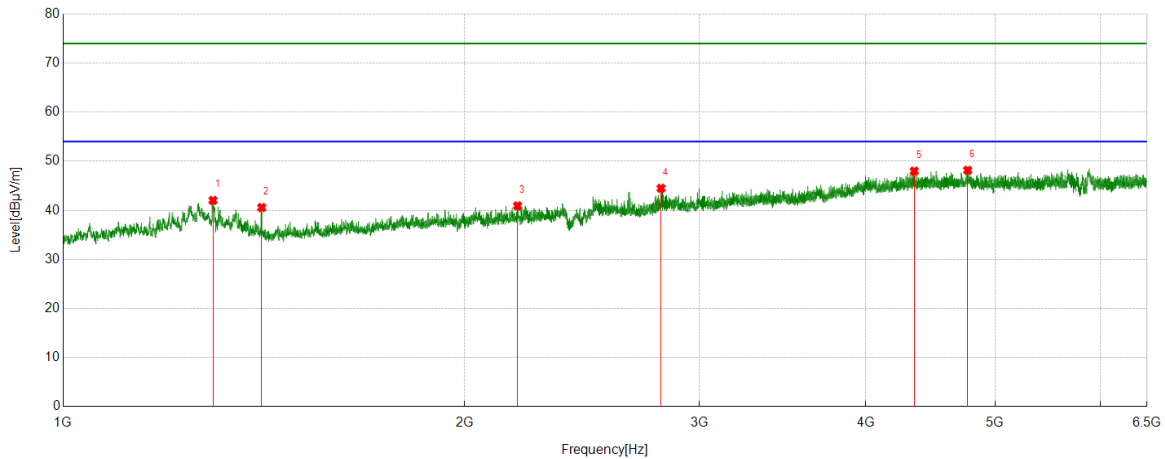
PK Result:

No.	Frequency	Reading Level	Correct Factor	Result	Limit	Margin	Remark
	[MHz]	[dBuV/m]	[dB]	[dBuV/m]	[dBuV/m]	[dB]	
1	1249.7083	49.02	-5.66	43.36	74.00	-30.64	Horizontal
2	1798.133	44.31	-3.83	40.48	74.00	-33.52	Horizontal
3	2881.6469	45.62	0.34	45.96	74.00	-28.04	Horizontal
4	3550.3389	41.44	3.04	44.48	74.00	-29.52	Horizontal
5	4385.3762	41.03	6.62	47.65	74.00	-26.35	Horizontal
6	5772.697	40.06	7.67	47.73	74.00	-26.27	Horizontal

- Remark: 1. Measurement = Reading Level + Correct Factor.  
 2. If Peak Result complies with AV limit, AV Result is deemed to comply with AV limit.  
 3. Test setup: RBW: 1 MHz, VBW: 3 MHz, Sweep time: auto.  
 4. Peak: Peak detector.  
 5. AVG: VBW refer to section 6.2.  
 6. For below 6.5GHz part, filter losses were only considered in the spurious frequency bands and the authorized band were not corrected for Band Reject Filter losses.  
 The proper operation of the transmitter prior to adding the filter to the measurement chain.  
 7. Only the worst case emission was recorded, if it complies with the limit, the other emissions deemed to comply with the limit.



Test Mode	Channel	Polarization	Verdict
11AC20	5700	Vertical	PASS



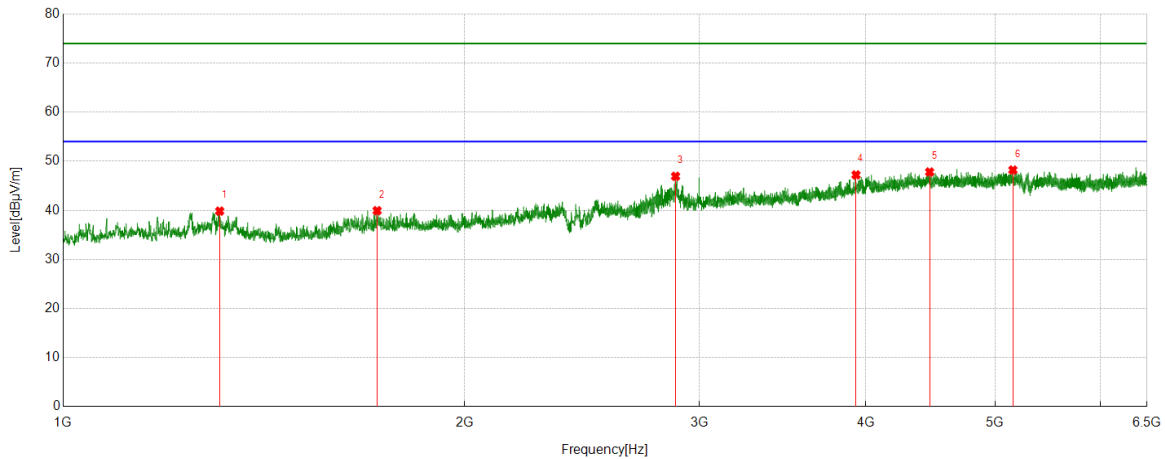
PK Result:

No.	Frequency	Reading Level	Correct Factor	Result	Limit	Margin	Remark
	[MHz]	[dBuV/m]	[dB]	[dBuV/m]	[dBuV/m]	[dB]	
1	1295.3826	47.82	-5.79	42.03	74.00	-31.97	Vertical
2	1409.0682	45.96	-5.39	40.57	74.00	-33.43	Vertical
3	2191.8653	43.24	-2.33	40.91	74.00	-33.09	Vertical
4	2808.3014	44.73	-0.24	44.49	74.00	-29.51	Vertical
5	4348.4276	41.10	6.88	47.98	74.00	-26.02	Vertical
6	4768.8632	40.82	7.34	48.16	74.00	-25.84	Vertical

- Remark: 1. Measurement = Reading Level + Correct Factor.  
 2. If Peak Result complies with AV limit, AV Result is deemed to comply with AV limit.  
 3. Test setup: RBW: 1 MHz, VBW: 3 MHz, Sweep time: auto.  
 4. Peak: Peak detector.  
 5. AVG: VBW refer to section 6.2.  
 6. For below 6.5GHz part, filter losses were only considered in the spurious frequency bands and the authorized band were not corrected for Band Reject Filter losses.  
 The proper operation of the transmitter prior to adding the filter to the measurement chain.  
 7. Only the worst case emission was recorded, if it complies with the limit, the other emissions deemed to comply with the limit.



Test Mode	Channel	Polarization	Verdict
11AC20	5720	Horizontal	PASS



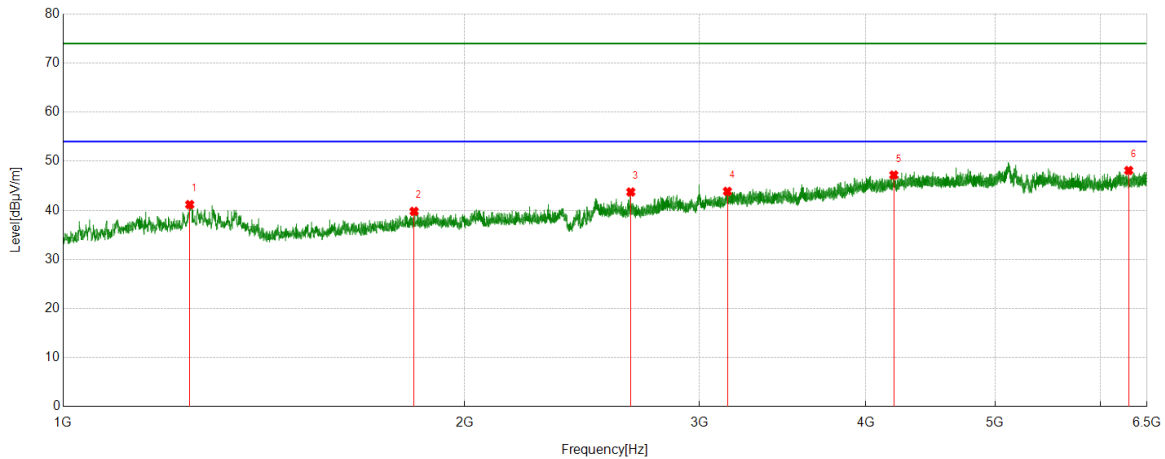
PK Result:

No.	Frequency	Reading Level	Correct Factor	Result	Limit	Margin	Remark
	[MHz]	[dBuV/m]	[dB]	[dBuV/m]	[dBuV/m]	[dB]	
1	1310.3851	45.21	-5.37	39.84	74.00	-34.16	Horizontal
2	1719.7866	44.23	-4.30	39.93	74.00	-34.07	Horizontal
3	2879.3132	46.65	0.28	46.93	74.00	-27.07	Horizontal
4	3932.2703	41.23	5.99	47.22	74.00	-26.78	Horizontal
5	4465.4962	40.59	7.22	47.81	74.00	-26.19	Horizontal
6	5155.8507	40.23	7.98	48.21	74.00	-25.79	Horizontal

- Remark: 1. Measurement = Reading Level + Correct Factor.  
 2. If Peak Result complies with AV limit, AV Result is deemed to comply with AV limit.  
 3. Test setup: RBW: 1 MHz, VBW: 3 MHz, Sweep time: auto.  
 4. Peak: Peak detector.  
 5. AVG: VBW refer to section 6.2.  
 6. For below 6.5GHz part, filter losses were only considered in the spurious frequency bands and the authorized band were not corrected for Band Reject Filter losses.  
 The proper operation of the transmitter prior to adding the filter to the measurement chain.  
 7. Only the worst case emission was recorded, if it complies with the limit, the other emissions deemed to comply with the limit.



Test Mode	Channel	Polarization	Verdict
11AC20	5720	Vertical	PASS



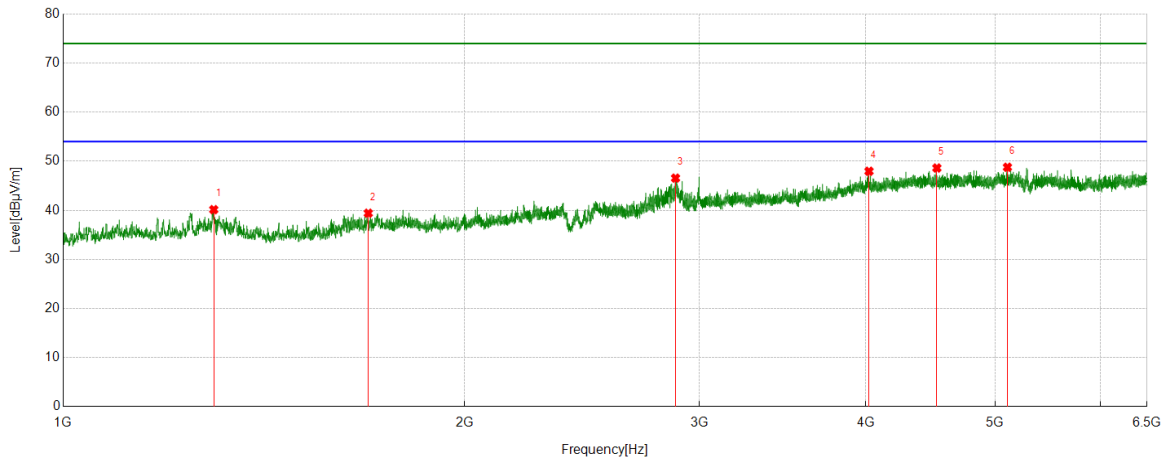
PK Result:

No.	Frequency	Reading Level	Correct Factor	Result	Limit	Margin	Remark
	[MHz]	[dBuV/m]	[dB]	[dBuV/m]	[dBuV/m]	[dB]	
1	1244.3741	46.78	-5.61	41.17	74.00	-32.83	Vertical
2	1833.1389	43.49	-3.70	39.79	74.00	-34.21	Vertical
3	2665.2775	44.43	-0.70	43.73	74.00	-30.27	Vertical
4	3149.3499	41.30	2.56	43.86	74.00	-30.14	Vertical
5	4197.5219	40.82	6.38	47.20	74.00	-26.80	Vertical
6	6297.3664	39.55	8.57	48.12	74.00	-25.88	Vertical

- Remark: 1. Measurement = Reading Level + Correct Factor.  
 2. If Peak Result complies with AV limit, AV Result is deemed to comply with AV limit.  
 3. Test setup: RBW: 1 MHz, VBW: 3 MHz, Sweep time: auto.  
 4. Peak: Peak detector.  
 5. AVG: VBW refer to section 6.2.  
 6. For below 6.5GHz part, filter losses were only considered in the spurious frequency bands and the authorized band were not corrected for Band Reject Filter losses.  
 The proper operation of the transmitter prior to adding the filter to the measurement chain.  
 7. Only the worst case emission was recorded, if it complies with the limit, the other emissions deemed to comply with the limit.



Test Mode	Channel	Polarization	Verdict
11AC20	5745	Horizontal	PASS



PK Result:

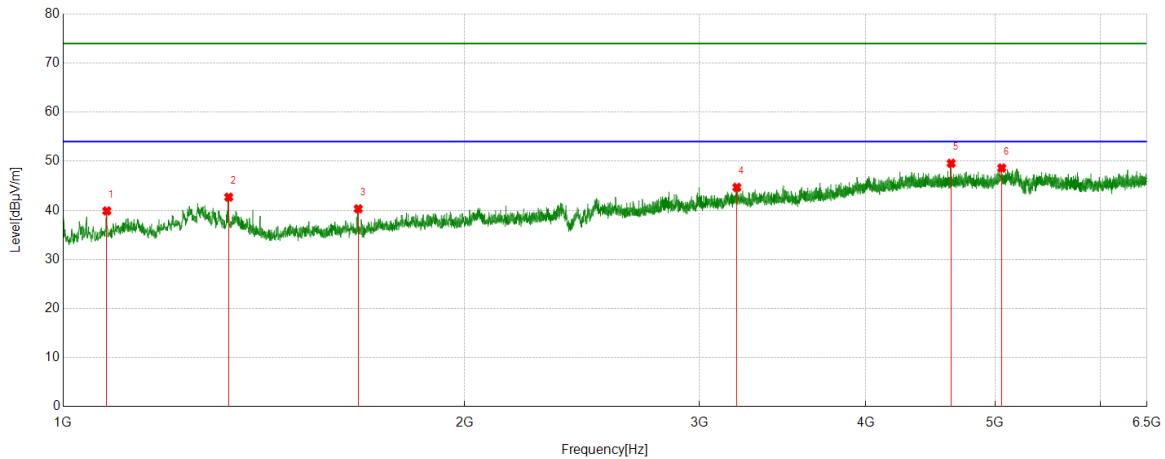
No.	Frequency	Reading Level	Correct Factor	Result	Limit	Margin	Remark
	[MHz]	[dBuV/m]	[dB]	[dBuV/m]	[dBuV/m]	[dB]	
1	1297.0495	45.95	-5.81	40.14	74.00	-33.86	Horizontal
2	1693.7823	44.18	-4.77	39.41	74.00	-34.59	Horizontal
3	2879.3132	46.28	0.28	46.56	74.00	-27.44	Horizontal
4	4021.7246	41.49	6.47	47.96	74.00	-26.04	Horizontal
5	4521.5024	41.38	7.24	48.62	74.00	-25.38	Horizontal
6	5107.6231	40.77	8.01	48.78	74.00	-25.22	Horizontal

- Remark: 1. Measurement = Reading Level + Correct Factor.  
 2. If Peak Result complies with AV limit, AV Result is deemed to comply with AV limit.  
 3. Test setup: RBW: 1 MHz, VBW: 3 MHz, Sweep time: auto.  
 4. Peak: Peak detector.  
 5. AVG: VBW refer to section 6.2.  
 6. For below 6.5GHz part, filter losses were only considered in the spurious frequency bands and the authorized band were not corrected for Band Reject Filter losses.  
 The proper operation of the transmitter prior to adding the filter to the measurement chain.  
 7. Only the worst case emission was recorded, if it complies with the limit, the other emissions deemed to comply with the limit.





Test Mode	Channel	Polarization	Verdict
11AC20	5745	Vertical	PASS



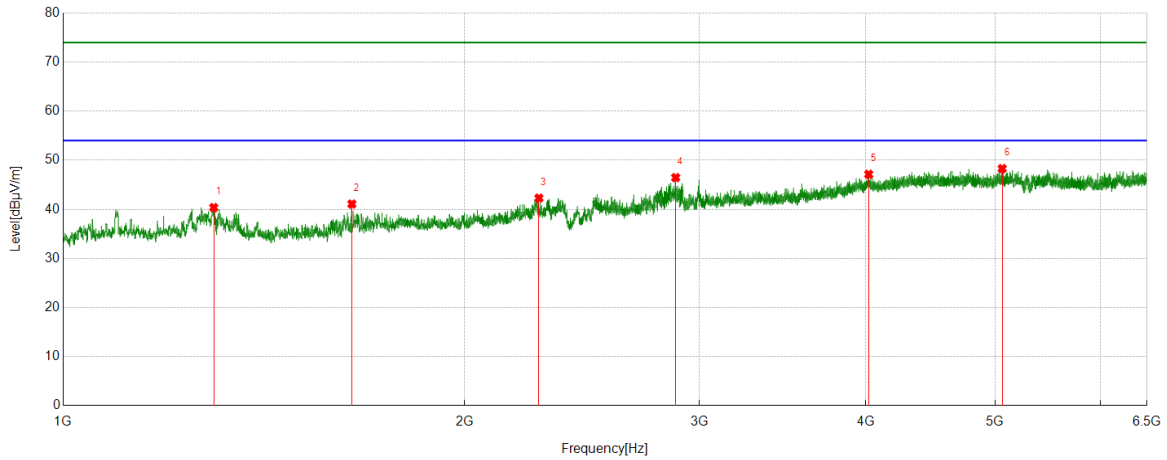
PK Result:

No.	Frequency	Reading Level	Correct Factor	Result	Limit	Margin	Remark
	[MHz]	[dBuV/m]	[dB]	[dBuV/m]	[dBuV/m]	[dB]	
1	1078.3464	45.30	-5.42	39.88	74.00	-34.12	Vertical
2	1331.0552	48.36	-5.68	42.68	74.00	-31.32	Vertical
3	1664.7775	45.18	-4.87	40.31	74.00	-33.69	Vertical
4	3201.0779	41.84	2.84	44.68	74.00	-29.32	Vertical
5	4634.6816	42.45	7.13	49.58	74.00	-24.42	Vertical
6	5057.8398	41.10	7.52	48.62	74.00	-25.38	Vertical

- Remark: 1. Measurement = Reading Level + Correct Factor.  
 2. If Peak Result complies with AV limit, AV Result is deemed to comply with AV limit.  
 3. Test setup: RBW: 1 MHz, VBW: 3 MHz, Sweep time: auto.  
 4. Peak: Peak detector.  
 5. AVG: VBW refer to section 6.2.  
 6. For below 6.5GHz part, filter losses were only considered in the spurious frequency bands and the authorized band were not corrected for Band Reject Filter losses.  
 The proper operation of the transmitter prior to adding the filter to the measurement chain.  
 7. Only the worst case emission was recorded, if it complies with the limit, the other emissions deemed to comply with the limit.



Test Mode	Channel	Polarization	Verdict
11AC20	5785	Horizontal	PASS



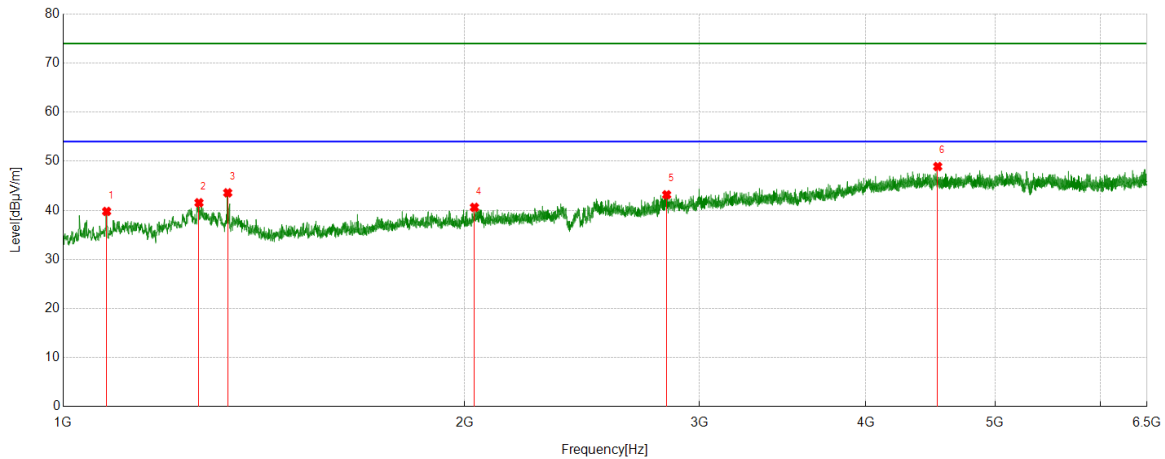
PK Result:

No.	Frequency	Reading Level	Correct Factor	Result	Limit	Margin	Remark
	[MHz]	[dBuV/m]	[dB]	[dBuV/m]	[dBuV/m]	[dB]	
1	1297.0495	46.17	-5.81	40.36	74.00	-33.64	Horizontal
2	1646.4411	46.08	-5.00	41.08	74.00	-32.92	Horizontal
3	2274.2124	44.32	-2.03	42.29	74.00	-31.71	Horizontal
4	2879.98	46.17	0.29	46.46	74.00	-27.54	Horizontal
5	4019.78	40.64	6.50	47.14	74.00	-26.86	Horizontal
6	5061.7291	40.75	7.56	48.31	74.00	-25.69	Horizontal

- Remark: 1. Measurement = Reading Level + Correct Factor.  
 2. If Peak Result complies with AV limit, AV Result is deemed to comply with AV limit.  
 3. Test setup: RBW: 1 MHz, VBW: 3 MHz, Sweep time: auto.  
 4. Peak: Peak detector.  
 5. AVG: VBW refer to section 6.2.  
 6. For below 6.5GHz part, filter losses were only considered in the spurious frequency bands and the authorized band were not corrected for Band Reject Filter losses.  
 The proper operation of the transmitter prior to adding the filter to the measurement chain.  
 7. Only the worst case emission was recorded, if it complies with the limit, the other emissions deemed to comply with the limit.



Test Mode	Channel	Polarization	Verdict
11AC20	5785	Vertical	PASS



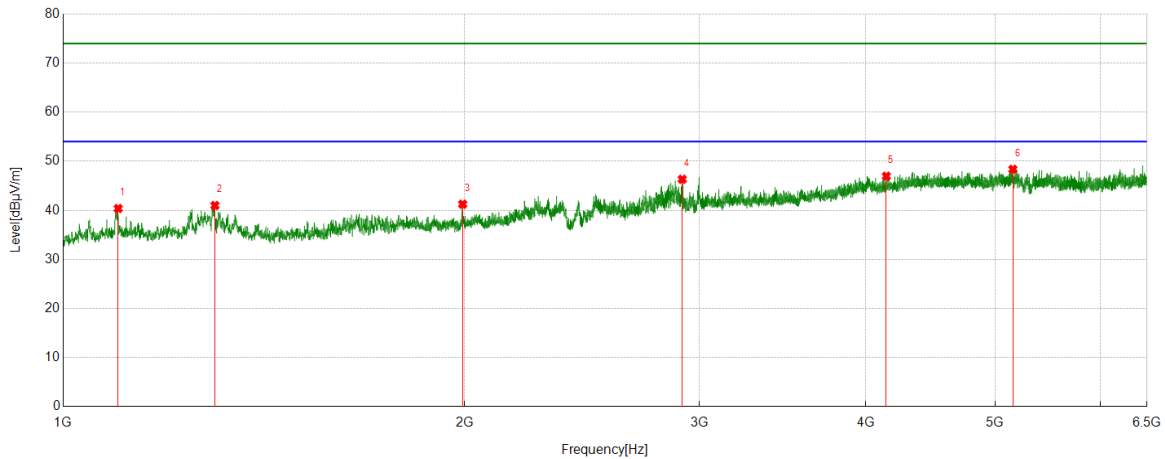
PK Result:

No.	Frequency	Reading Level	Correct Factor	Result	Limit	Margin	Remark
	[MHz]	[dBuV/m]	[dB]	[dBuV/m]	[dBuV/m]	[dB]	
1	1078.013	45.19	-5.41	39.78	74.00	-34.22	Vertical
2	1264.3774	47.12	-5.58	41.54	74.00	-32.46	Vertical
3	1328.7215	49.24	-5.67	43.57	74.00	-30.43	Vertical
4	2034.5058	43.19	-2.58	40.61	74.00	-33.39	Vertical
5	2835.6393	43.15	0.02	43.17	74.00	-30.83	Vertical
6	4528.1142	41.63	7.29	48.92	74.00	-25.08	Vertical

- Remark: 1. Measurement = Reading Level + Correct Factor.  
 2. If Peak Result complies with AV limit, AV Result is deemed to comply with AV limit.  
 3. Test setup: RBW: 1 MHz, VBW: 3 MHz, Sweep time: auto.  
 4. Peak: Peak detector.  
 5. AVG: VBW refer to section 6.2.  
 6. For below 6.5GHz part, filter losses were only considered in the spurious frequency bands and the authorized band were not corrected for Band Reject Filter losses.  
 The proper operation of the transmitter prior to adding the filter to the measurement chain.  
 7. Only the worst case emission was recorded, if it complies with the limit, the other emissions deemed to comply with the limit.



Test Mode	Channel	Polarization	Verdict
11AC20	5825	Horizontal	PASS



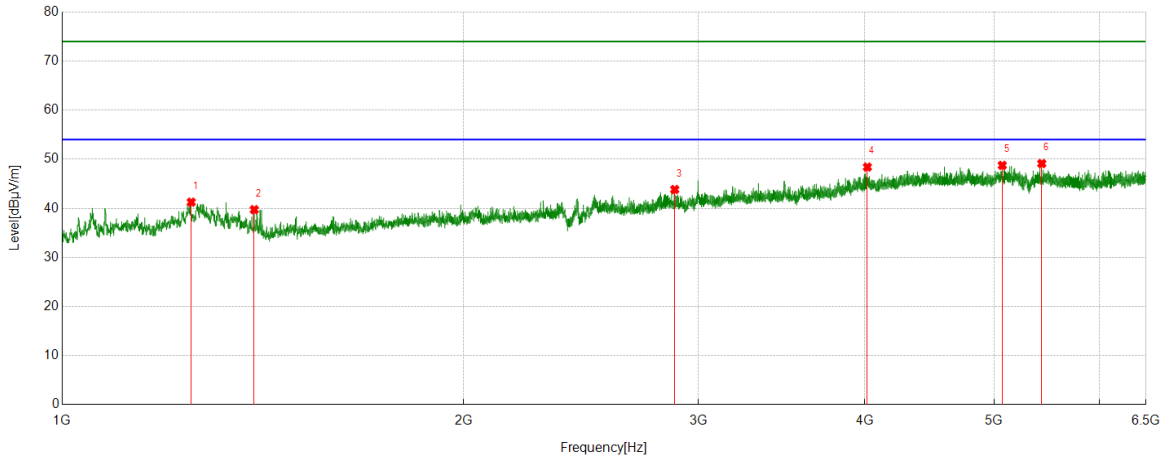
PK Result:

No.	Frequency	Reading Level	Correct Factor	Result	Limit	Margin	Remark
	[MHz]	[dBuV/m]	[dB]	[dBuV/m]	[dBuV/m]	[dB]	
1	1099.6833	45.95	-5.58	40.37	74.00	-33.63	Horizontal
2	1299.7166	46.83	-5.84	40.99	74.00	-33.01	Horizontal
3	1993.4989	44.30	-3.05	41.25	74.00	-32.75	Horizontal
4	2912.9855	45.83	0.50	46.33	74.00	-27.67	Horizontal
5	4143.8493	40.42	6.53	46.95	74.00	-27.05	Horizontal
6	5155.8507	40.38	7.98	48.36	74.00	-25.64	Horizontal

- Remark: 1. Measurement = Reading Level + Correct Factor.  
 2. If Peak Result complies with AV limit, AV Result is deemed to comply with AV limit.  
 3. Test setup: RBW: 1 MHz, VBW: 3 MHz, Sweep time: auto.  
 4. Peak: Peak detector.  
 5. AVG: VBW refer to section 6.2.  
 6. For below 6.5GHz part, filter losses were only considered in the spurious frequency bands and the authorized band were not corrected for Band Reject Filter losses.  
 The proper operation of the transmitter prior to adding the filter to the measurement chain.  
 7. Only the worst case emission was recorded, if it complies with the limit, the other emissions deemed to comply with the limit.



Test Mode	Channel	Polarization	Verdict
11AC20	5825	Vertical	PASS



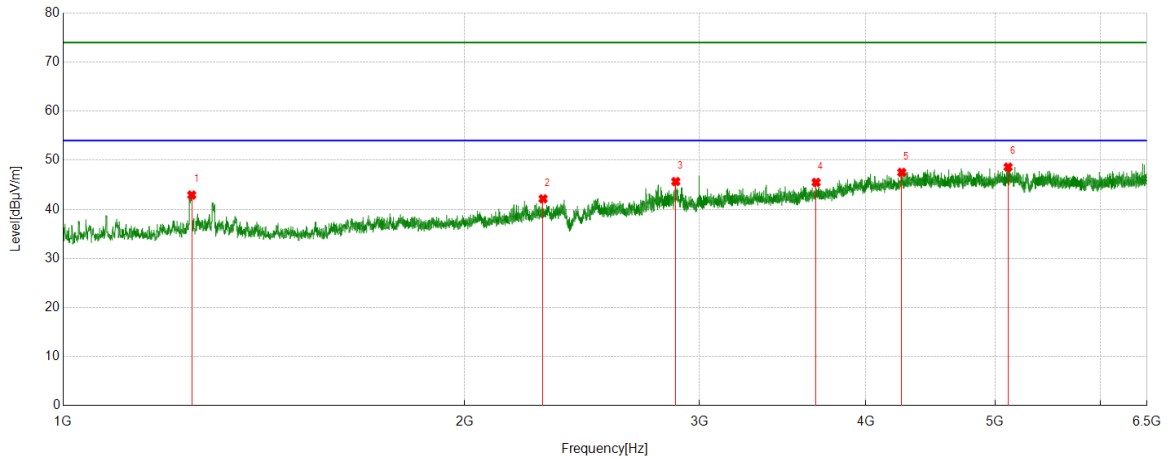
PK Result:

No.	Frequency	Reading Level	Correct Factor	Result	Limit	Margin	Remark
	[MHz]	[dBuV/m]	[dB]	[dBuV/m]	[dBuV/m]	[dB]	
1	1249.7083	46.92	-5.66	41.26	74.00	-32.74	Vertical
2	1393.3989	45.47	-5.74	39.73	74.00	-34.27	Vertical
3	2880.3134	43.53	0.30	43.83	74.00	-30.17	Vertical
4	4017.0575	42.01	6.40	48.41	74.00	-25.59	Vertical
5	5071.0635	41.05	7.70	48.75	74.00	-25.25	Vertical
6	5429.2699	41.59	7.53	49.12	74.00	-24.88	Vertical

- Remark: 1. Measurement = Reading Level + Correct Factor.  
 2. If Peak Result complies with AV limit, AV Result is deemed to comply with AV limit.  
 3. Test setup: RBW: 1 MHz, VBW: 3 MHz, Sweep time: auto.  
 4. Peak: Peak detector.  
 5. AVG: VBW refer to section 6.2.  
 6. For below 6.5GHz part, filter losses were only considered in the spurious frequency bands and the authorized band were not corrected for Band Reject Filter losses.  
 The proper operation of the transmitter prior to adding the filter to the measurement chain.  
 7. Only the worst case emission was recorded, if it complies with the limit, the other emissions deemed to comply with the limit.



Test Mode	Channel	Polarization	Verdict
11AC40	5190	Horizontal	PASS



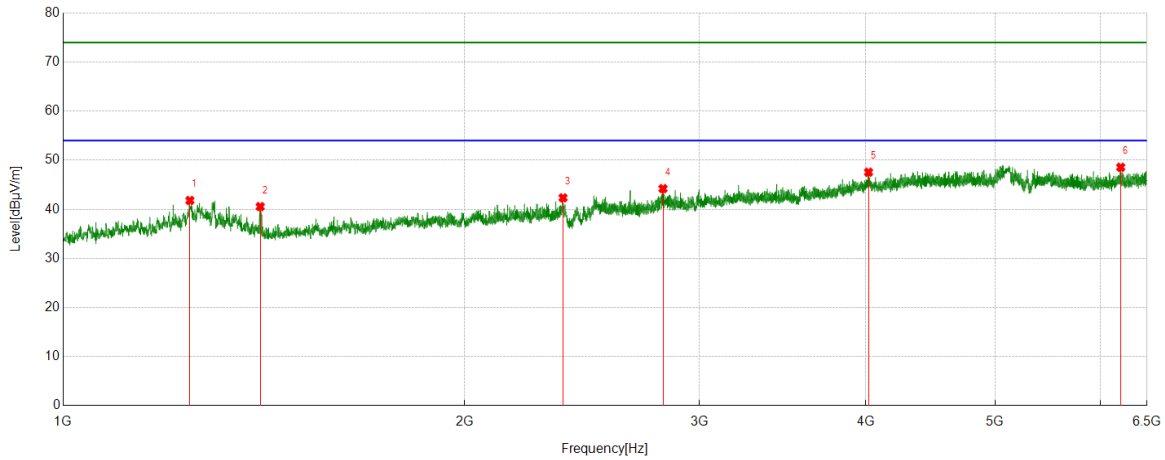
PK Result:

No.	Frequency	Reading Level	Correct Factor	Result	Limit	Margin	Remark
	[MHz]	[dBuV/m]	[dB]	[dBuV/m]	[dBuV/m]	[dB]	
1	1248.7081	48.56	-5.65	42.91	74.00	-31.09	Horizontal
2	2290.5484	44.07	-1.93	42.14	74.00	-31.86	Horizontal
3	2880.6468	45.35	0.31	45.66	74.00	-28.34	Horizontal
4	3670.5189	41.25	4.24	45.49	74.00	-28.51	Horizontal
5	4255.4728	40.64	6.89	47.53	74.00	-26.47	Horizontal
6	5113.4571	40.59	8.01	48.60	74.00	-25.40	Horizontal

- Remark: 1. Measurement = Reading Level + Correct Factor.  
 2. If Peak Result complies with AV limit, AV Result is deemed to comply with AV limit.  
 3. Test setup: RBW: 1 MHz, VBW: 3 MHz, Sweep time: auto.  
 4. Peak: Peak detector.  
 5. AVG: VBW refer to section 6.2.  
 6. For below 6.5GHz part, filter losses were only considered in the spurious frequency bands and the authorized band were not corrected for Band Reject Filter losses.  
 The proper operation of the transmitter prior to adding the filter to the measurement chain.  
 7. Only the worst case emission was recorded, if it complies with the limit, the other emissions deemed to comply with the limit.



Test Mode	Channel	Polarization	Verdict
11AC40	5190	Vertical	PASS



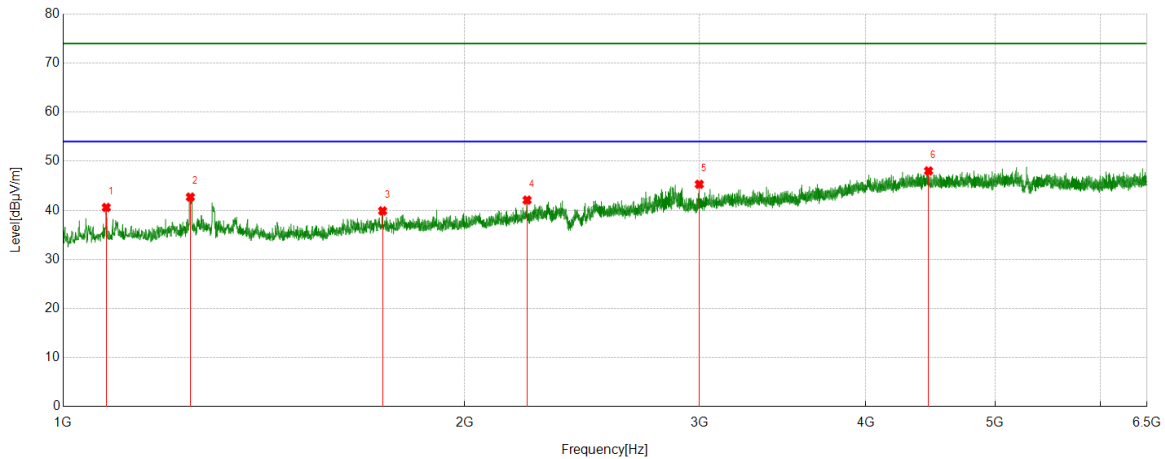
PK Result:

No.	Frequency	Reading Level	Correct Factor	Result	Limit	Margin	Remark
	[MHz]	[dBuV/m]	[dB]	[dBuV/m]	[dBuV/m]	[dB]	
1	1244.7075	47.43	-5.62	41.81	74.00	-32.19	Vertical
2	1405.4009	46.05	-5.49	40.56	74.00	-33.44	Vertical
3	2370.8951	43.47	-1.13	42.34	74.00	-31.66	Vertical
4	2817.6363	44.40	-0.19	44.21	74.00	-29.79	Vertical
5	4018.2242	41.12	6.44	47.56	74.00	-26.44	Vertical
6	6211.0234	40.29	8.28	48.57	74.00	-25.43	Vertical

- Remark: 1. Measurement = Reading Level + Correct Factor.  
 2. If Peak Result complies with AV limit, AV Result is deemed to comply with AV limit.  
 3. Test setup: RBW: 1 MHz, VBW: 3 MHz, Sweep time: auto.  
 4. Peak: Peak detector.  
 5. AVG: VBW refer to section 6.2.  
 6. For below 6.5GHz part, filter losses were only considered in the spurious frequency bands and the authorized band were not corrected for Band Reject Filter losses.  
 The proper operation of the transmitter prior to adding the filter to the measurement chain.  
 7. Only the worst case emission was recorded, if it complies with the limit, the other emissions deemed to comply with the limit.



Test Mode	Channel	Polarization	Verdict
11AC40	5230	Horizontal	PASS



PK Result:

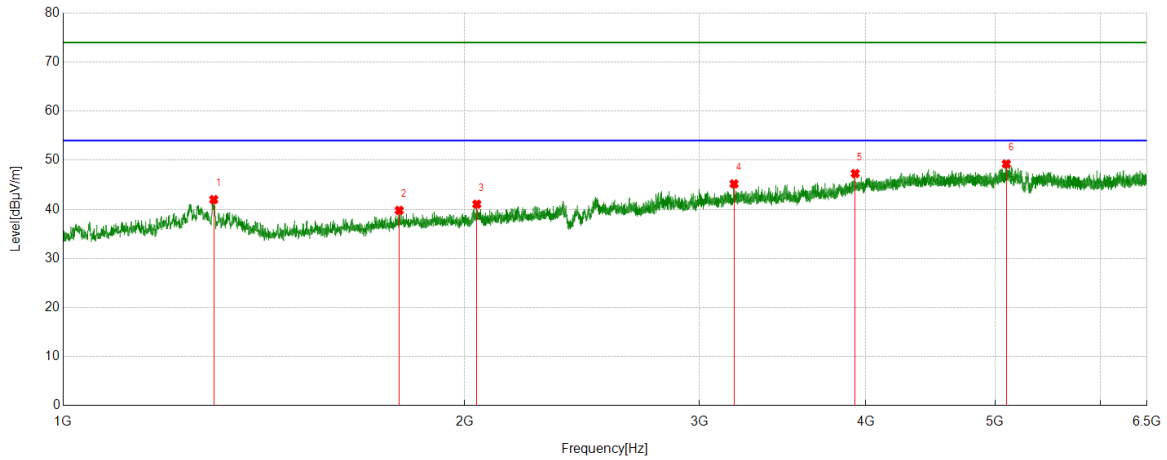
No.	Frequency	Reading Level	Correct Factor	Result	Limit	Margin	Remark
	[MHz]	[dBuV/m]	[dB]	[dBuV/m]	[dBuV/m]	[dB]	
1	1077.3462	45.98	-5.40	40.58	74.00	-33.42	Horizontal
2	1245.7076	48.32	-5.62	42.70	74.00	-31.30	Horizontal
3	1736.1227	44.36	-4.48	39.88	74.00	-34.12	Horizontal
4	2228.2047	44.26	-2.18	42.08	74.00	-31.92	Horizontal
5	3000	43.38	1.92	45.30	74.00	-28.70	Horizontal
6	4457.3286	40.71	7.32	48.03	74.00	-25.97	Horizontal

- Remark: 1. Measurement = Reading Level + Correct Factor.  
 2. If Peak Result complies with AV limit, AV Result is deemed to comply with AV limit.  
 3. Test setup: RBW: 1 MHz, VBW: 3 MHz, Sweep time: auto.  
 4. Peak: Peak detector.  
 5. AVG: VBW refer to section 6.2.  
 6. For below 6.5GHz part, filter losses were only considered in the spurious frequency bands and the authorized band were not corrected for Band Reject Filter losses.  
 The proper operation of the transmitter prior to adding the filter to the measurement chain.  
 7. Only the worst case emission was recorded, if it complies with the limit, the other emissions deemed to comply with the limit.





Test Mode	Channel	Polarization	Verdict
11AC40	5230	Vertical	PASS



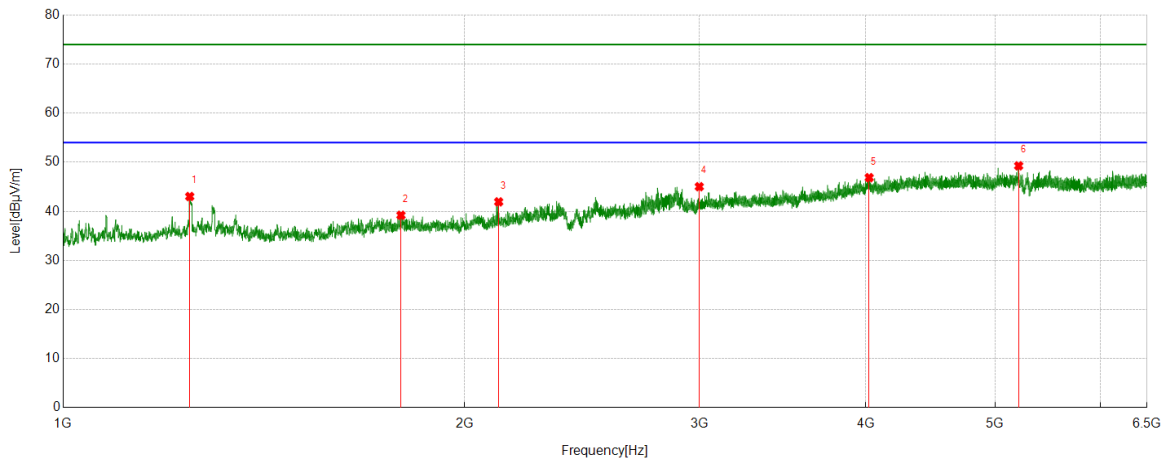
PK Result:

No.	Frequency	Reading Level	Correct Factor	Result	Limit	Margin	Remark
	[MHz]	[dBuV/m]	[dB]	[dBuV/m]	[dBuV/m]	[dB]	
1	1297.0495	47.80	-5.81	41.99	74.00	-32.01	Vertical
2	1786.7978	43.60	-3.81	39.79	74.00	-34.21	Vertical
3	2042.8405	43.43	-2.39	41.04	74.00	-32.96	Vertical
4	3185.5206	42.65	2.54	45.19	74.00	-28.81	Vertical
5	3926.8252	41.41	5.89	47.30	74.00	-26.70	Vertical
6	5097.5108	41.28	7.97	49.25	74.00	-24.75	Vertical

- Remark: 1. Measurement = Reading Level + Correct Factor.  
 2. If Peak Result complies with AV limit, AV Result is deemed to comply with AV limit.  
 3. Test setup: RBW: 1 MHz, VBW: 3 MHz, Sweep time: auto.  
 4. Peak: Peak detector.  
 5. AVG: VBW refer to section 6.2.  
 6. For below 6.5GHz part, filter losses were only considered in the spurious frequency bands and the authorized band were not corrected for Band Reject Filter losses.  
 The proper operation of the transmitter prior to adding the filter to the measurement chain.  
 7. Only the worst case emission was recorded, if it complies with the limit, the other emissions deemed to comply with the limit.



Test Mode	Channel	Polarization	Verdict
11AC40	5270	Horizontal	PASS



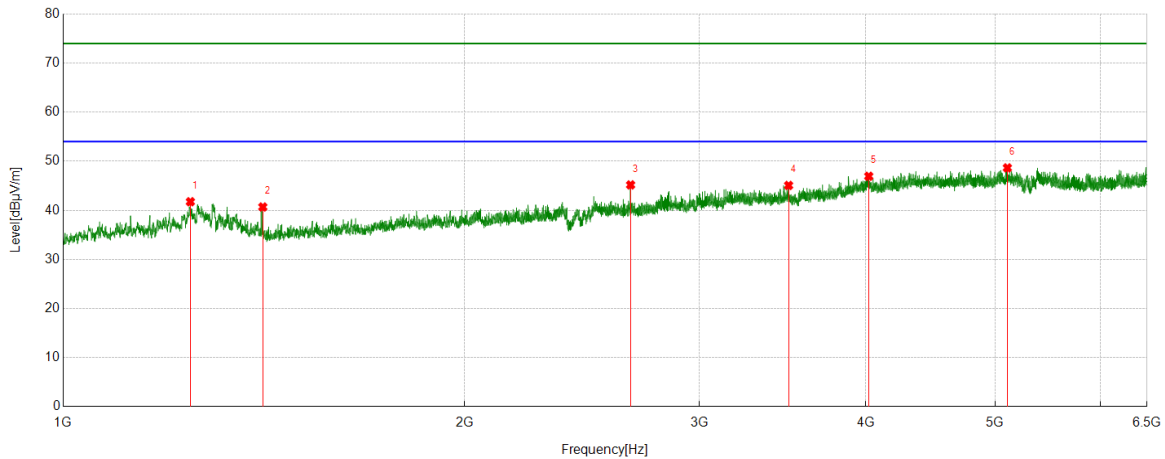
PK Result:

No.	Frequency	Reading Level	Correct Factor	Result	Limit	Margin	Remark
	[MHz]	[dBuV/m]	[dB]	[dBuV/m]	[dBuV/m]	[dB]	
1	1244.3741	48.63	-5.61	43.02	74.00	-30.98	Horizontal
2	1792.132	42.96	-3.76	39.20	74.00	-34.80	Horizontal
3	2121.5203	44.32	-2.39	41.93	74.00	-32.07	Horizontal
4	3000	43.10	1.92	45.02	74.00	-28.98	Horizontal
5	4022.8914	40.42	6.44	46.86	74.00	-27.14	Horizontal
6	5207.5786	41.37	7.90	49.27	74.00	-24.73	Horizontal

- Remark: 1. Measurement = Reading Level + Correct Factor.  
 2. If Peak Result complies with AV limit, AV Result is deemed to comply with AV limit.  
 3. Test setup: RBW: 1 MHz, VBW: 3 MHz, Sweep time: auto.  
 4. Peak: Peak detector.  
 5. AVG: VBW refer to section 6.2.  
 6. For below 6.5GHz part, filter losses were only considered in the spurious frequency bands and the authorized band were not corrected for Band Reject Filter losses.  
 The proper operation of the transmitter prior to adding the filter to the measurement chain.  
 7. Only the worst case emission was recorded, if it complies with the limit, the other emissions deemed to comply with the limit.



Test Mode	Channel	Polarization	Verdict
11AC40	5270	Vertical	PASS



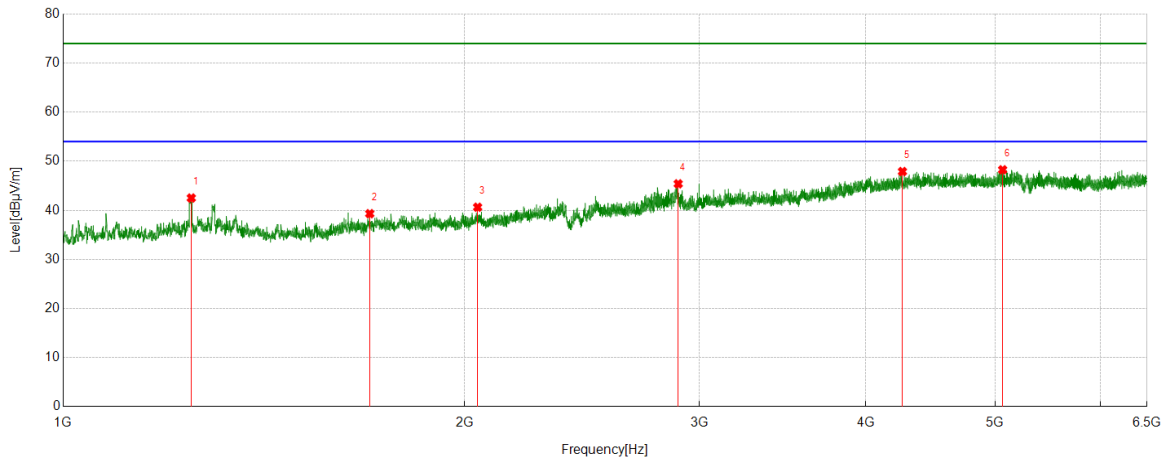
PK Result:

No.	Frequency	Reading Level	Correct Factor	Result	Limit	Margin	Remark
	[MHz]	[dBuV/m]	[dB]	[dBuV/m]	[dBuV/m]	[dB]	
1	1245.7076	47.37	-5.62	41.75	74.00	-32.25	Vertical
2	1411.7353	46.11	-5.43	40.68	74.00	-33.32	Vertical
3	2664.2774	45.88	-0.70	45.18	74.00	-28.82	Vertical
4	3500.1667	41.88	3.19	45.07	74.00	-28.93	Vertical
5	4019.78	40.44	6.50	46.94	74.00	-27.06	Vertical
6	5107.2341	40.64	8.01	48.65	74.00	-25.35	Vertical

- Remark: 1. Measurement = Reading Level + Correct Factor.  
 2. If Peak Result complies with AV limit, AV Result is deemed to comply with AV limit.  
 3. Test setup: RBW: 1 MHz, VBW: 3 MHz, Sweep time: auto.  
 4. Peak: Peak detector.  
 5. AVG: VBW refer to section 6.2.  
 6. For below 6.5GHz part, filter losses were only considered in the spurious frequency bands and the authorized band were not corrected for Band Reject Filter losses.  
 The proper operation of the transmitter prior to adding the filter to the measurement chain.  
 7. Only the worst case emission was recorded, if it complies with the limit, the other emissions deemed to comply with the limit.



Test Mode	Channel	Polarization	Verdict
11AC40	5310	Horizontal	PASS



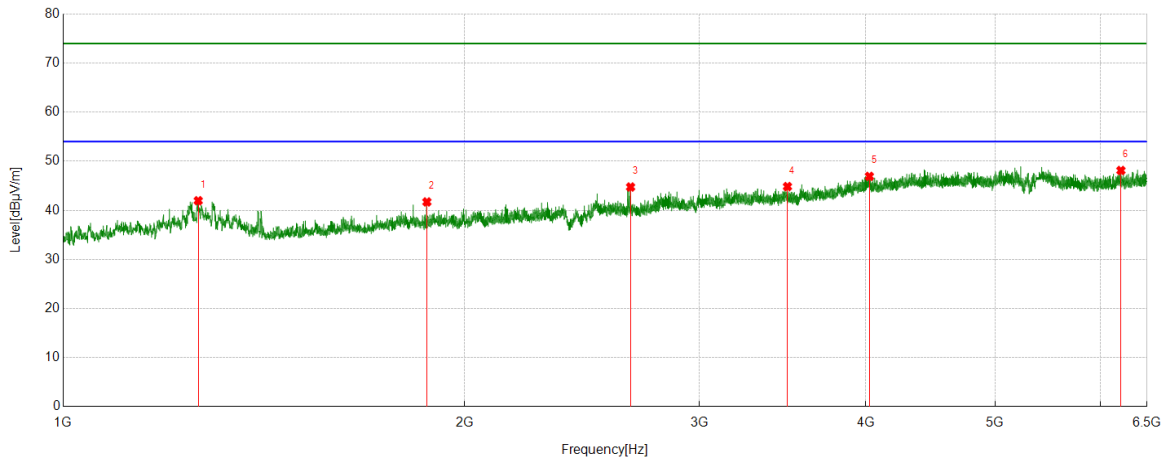
PK Result:

No.	Frequency	Reading Level	Correct Factor	Result	Limit	Margin	Remark
	[MHz]	[dBuV/m]	[dB]	[dBuV/m]	[dBuV/m]	[dB]	
1	1247.708	48.15	-5.64	42.51	74.00	-31.49	Horizontal
2	1698.1164	44.11	-4.79	39.32	74.00	-34.68	Horizontal
3	2045.841	43.02	-2.39	40.63	74.00	-33.37	Horizontal
4	2892.6488	44.91	0.49	45.40	74.00	-28.60	Horizontal
5	4260.5289	40.96	6.94	47.90	74.00	-26.10	Horizontal
6	5065.2295	40.64	7.62	48.26	74.00	-25.74	Horizontal

- Remark: 1. Measurement = Reading Level + Correct Factor.  
 2. If Peak Result complies with AV limit, AV Result is deemed to comply with AV limit.  
 3. Test setup: RBW: 1 MHz, VBW: 3 MHz, Sweep time: auto.  
 4. Peak: Peak detector.  
 5. AVG: VBW refer to section 6.2.  
 6. For below 6.5GHz part, filter losses were only considered in the spurious frequency bands and the authorized band were not corrected for Band Reject Filter losses.  
 The proper operation of the transmitter prior to adding the filter to the measurement chain.  
 7. Only the worst case emission was recorded, if it complies with the limit, the other emissions deemed to comply with the limit.



Test Mode	Channel	Polarization	Verdict
11AC40	5310	Vertical	PASS



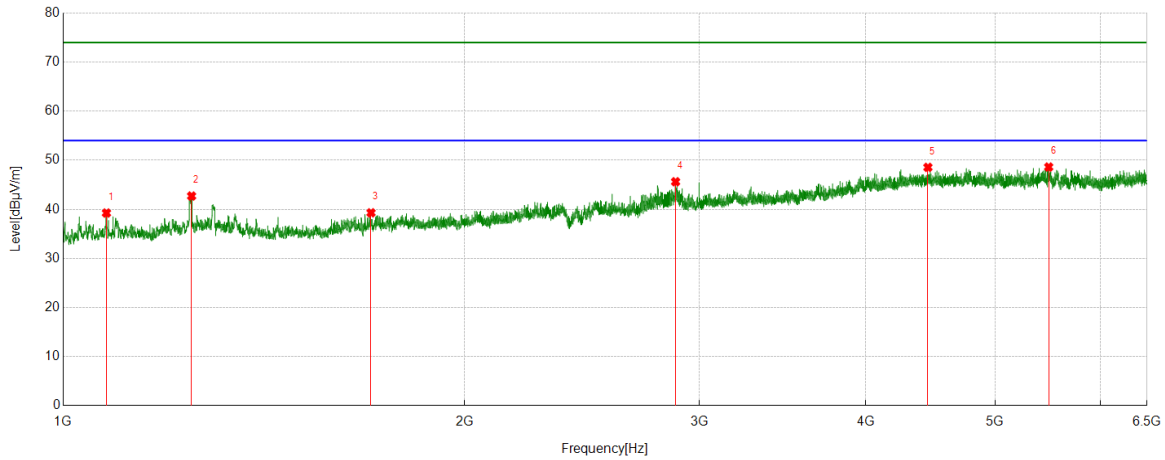
PK Result:

No.	Frequency	Reading Level	Correct Factor	Result	Limit	Margin	Remark
	[MHz]	[dBuV/m]	[dB]	[dBuV/m]	[dBuV/m]	[dB]	
1	1262.7105	47.59	-5.63	41.96	74.00	-32.04	Vertical
2	1874.1457	45.36	-3.65	41.71	74.00	-32.29	Vertical
3	2664.2774	45.45	-0.70	44.75	74.00	-29.25	Vertical
4	3493.1659	41.35	3.49	44.84	74.00	-29.16	Vertical
5	4024.0582	40.52	6.40	46.92	74.00	-27.08	Vertical
6	6213.357	39.84	8.28	48.12	74.00	-25.88	Vertical

- Remark: 1. Measurement = Reading Level + Correct Factor.  
 2. If Peak Result complies with AV limit, AV Result is deemed to comply with AV limit.  
 3. Test setup: RBW: 1 MHz, VBW: 3 MHz, Sweep time: auto.  
 4. Peak: Peak detector.  
 5. AVG: VBW refer to section 6.2.  
 6. For below 6.5GHz part, filter losses were only considered in the spurious frequency bands and the authorized band were not corrected for Band Reject Filter losses.  
 The proper operation of the transmitter prior to adding the filter to the measurement chain.  
 7. Only the worst case emission was recorded, if it complies with the limit, the other emissions deemed to comply with the limit.



Test Mode	Channel	Polarization	Verdict
11AC40	5510	Horizontal	PASS



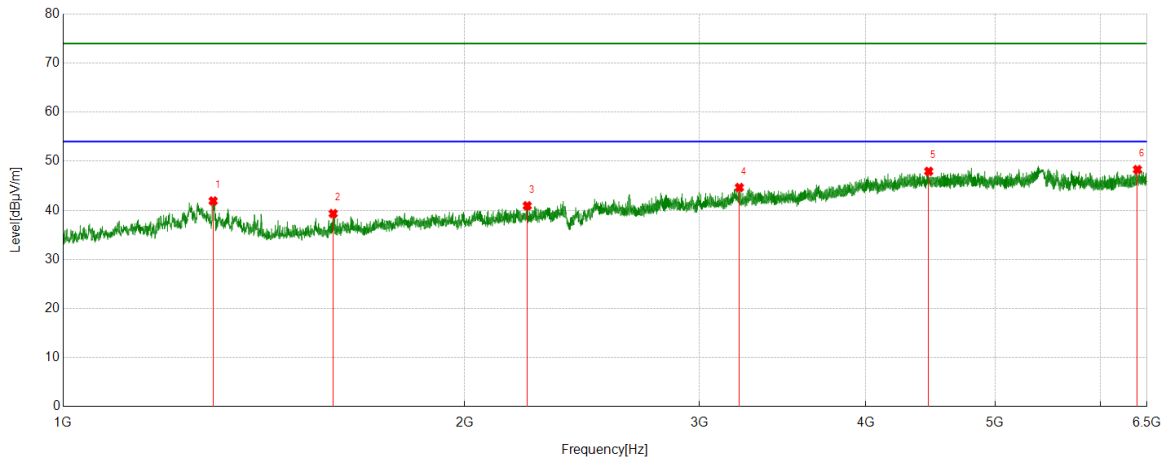
PK Result:

No.	Frequency	Reading Level	Correct Factor	Result	Limit	Margin	Remark
	[MHz]	[dBuV/m]	[dB]	[dBuV/m]	[dBuV/m]	[dB]	
1	1077.6796	44.65	-5.40	39.25	74.00	-34.75	Horizontal
2	1248.3747	48.36	-5.65	42.71	74.00	-31.29	Horizontal
3	1701.7836	44.04	-4.75	39.29	74.00	-34.71	Horizontal
4	2879.6466	45.33	0.29	45.62	74.00	-28.38	Horizontal
5	4452.2725	41.26	7.29	48.55	74.00	-25.45	Horizontal
6	5485.2761	40.16	8.46	48.62	74.00	-25.38	Horizontal

- Remark: 1. Measurement = Reading Level + Correct Factor.  
 2. If Peak Result complies with AV limit, AV Result is deemed to comply with AV limit.  
 3. Test setup: RBW: 1 MHz, VBW: 3 MHz, Sweep time: auto.  
 4. Peak: Peak detector.  
 5. AVG: VBW refer to section 6.2.  
 6. For below 6.5GHz part, filter losses were only considered in the spurious frequency bands and the authorized band were not corrected for Band Reject Filter losses.  
 The proper operation of the transmitter prior to adding the filter to the measurement chain.  
 7. Only the worst case emission was recorded, if it complies with the limit, the other emissions deemed to comply with the limit.



Test Mode	Channel	Polarization	Verdict
11AC40	5510	Vertical	PASS



PK Result:

No.	Frequency	Reading Level	Correct Factor	Result	Limit	Margin	Remark
	[MHz]	[dBuV/m]	[dB]	[dBuV/m]	[dBuV/m]	[dB]	
1	1295.716	47.71	-5.80	41.91	74.00	-32.09	Vertical
2	1594.099	44.38	-5.04	39.34	74.00	-34.66	Vertical
3	2228.8715	43.10	-2.17	40.93	74.00	-33.07	Vertical
4	3215.0795	42.37	2.28	44.65	74.00	-29.35	Vertical
5	4458.4954	40.65	7.30	47.95	74.00	-26.05	Vertical
6	6393.0437	39.22	9.08	48.30	74.00	-25.70	Vertical

Remark: 1. Measurement = Reading Level + Correct Factor.

2. If Peak Result complies with AV limit, AV Result is deemed to comply with AV limit.

3. Test setup: RBW: 1 MHz, VBW: 3 MHz, Sweep time: auto.

4. Peak: Peak detector.

5. AVG: VBW refer to section 6.2.

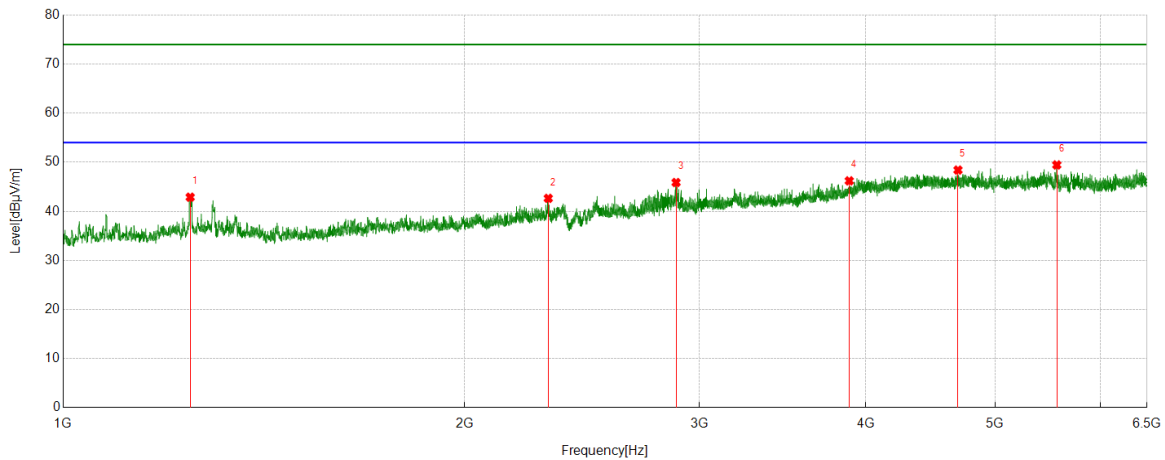
6. For below 6.5GHz part, filter losses were only considered in the spurious frequency bands and the authorized band were not corrected for Band Reject Filter losses

The proper operation of the transmitter prior to adding the filter to the measurement chain.

7. Only the worst case emission was recorded, if it complies with the limit, the other emissions deemed to comply with the limit.



Test Mode	Channel	Polarization	Verdict
11AC40	5550	Horizontal	PASS



PK Result:

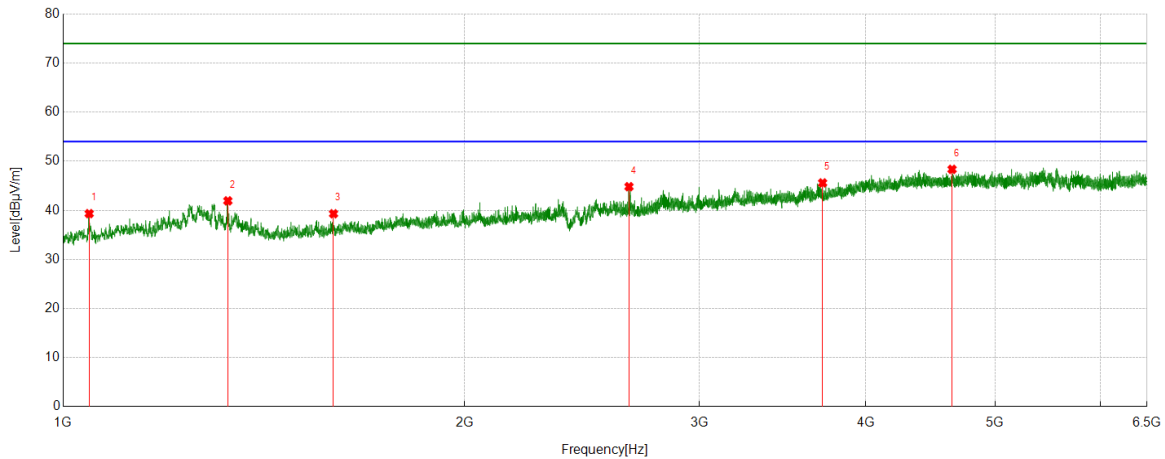
No.	Frequency	Reading Level	Correct Factor	Result	Limit	Margin	Remark
	[MHz]	[dBuV/m]	[dB]	[dBuV/m]	[dBuV/m]	[dB]	
1	1245.3742	48.50	-5.62	42.88	74.00	-31.12	Horizontal
2	2311.2185	44.30	-1.65	42.65	74.00	-31.35	Horizontal
3	2881.9803	45.53	0.34	45.87	74.00	-28.13	Horizontal
4	3886.7652	40.77	5.44	46.21	74.00	-27.79	Horizontal
5	4689.5211	40.93	7.48	48.41	74.00	-25.59	Horizontal
6	5562.2847	41.08	8.37	49.45	74.00	-24.55	Horizontal

- Remark: 1. Measurement = Reading Level + Correct Factor.  
 2. If Peak Result complies with AV limit, AV Result is deemed to comply with AV limit.  
 3. Test setup: RBW: 1 MHz, VBW: 3 MHz, Sweep time: auto.  
 4. Peak: Peak detector.  
 5. AVG: VBW refer to section 6.2.  
 6. For below 6.5GHz part, filter losses were only considered in the spurious frequency bands and the authorized band were not corrected for Band Reject Filter losses.  
 The proper operation of the transmitter prior to adding the filter to the measurement chain.  
 7. Only the worst case emission was recorded, if it complies with the limit, the other emissions deemed to comply with the limit.





Test Mode	Channel	Polarization	Verdict
11AC40	5550	Vertical	PASS



PK Result:

No.	Frequency	Reading Level	Correct Factor	Result	Limit	Margin	Remark
	[MHz]	[dBuV/m]	[dB]	[dBuV/m]	[dBuV/m]	[dB]	
1	1046.0077	44.87	-5.54	39.33	74.00	-34.67	Vertical
2	1329.0548	47.60	-5.67	41.93	74.00	-32.07	Vertical
3	1595.0992	44.36	-5.06	39.30	74.00	-34.70	Vertical
4	2656.9428	45.53	-0.71	44.82	74.00	-29.18	Vertical
5	3711.7458	40.93	4.66	45.59	74.00	-28.41	Vertical
6	4642.0713	41.15	7.20	48.35	74.00	-25.65	Vertical

Remark: 1. Measurement = Reading Level + Correct Factor.

2. If Peak Result complies with AV limit, AV Result is deemed to comply with AV limit.

3. Test setup: RBW: 1 MHz, VBW: 3 MHz, Sweep time: auto.

4. Peak: Peak detector.

5. AVG: VBW refer to section 6.2.

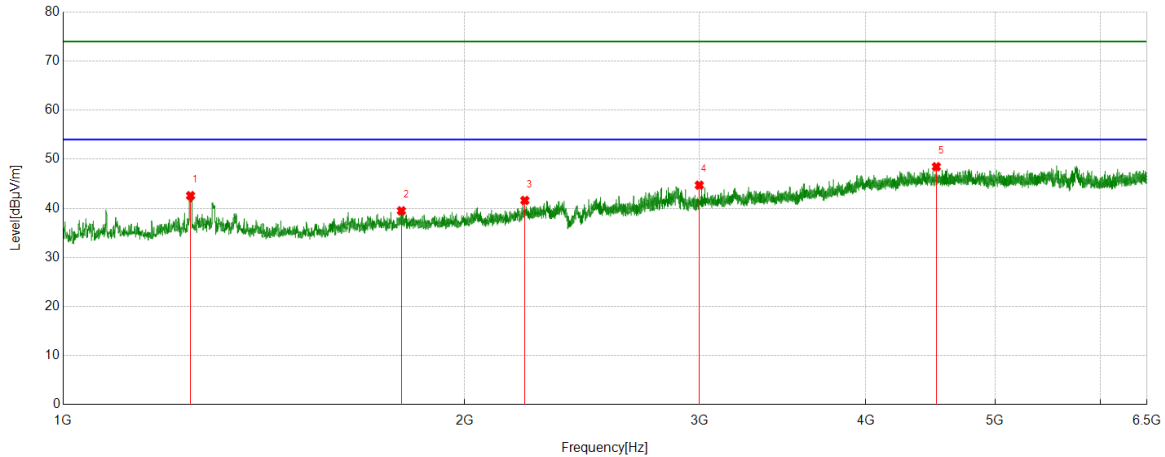
6. For below 6.5GHz part, filter losses were only considered in the spurious frequency bands and the authorized band were not corrected for Band Reject Filter losses

The proper operation of the transmitter prior to adding the filter to the measurement chain.

7. Only the worst case emission was recorded, if it complies with the limit, the other emissions deemed to comply with the limit.



Test Mode	Channel	Polarization	Verdict
11AC40	5590	Horizontal	PASS



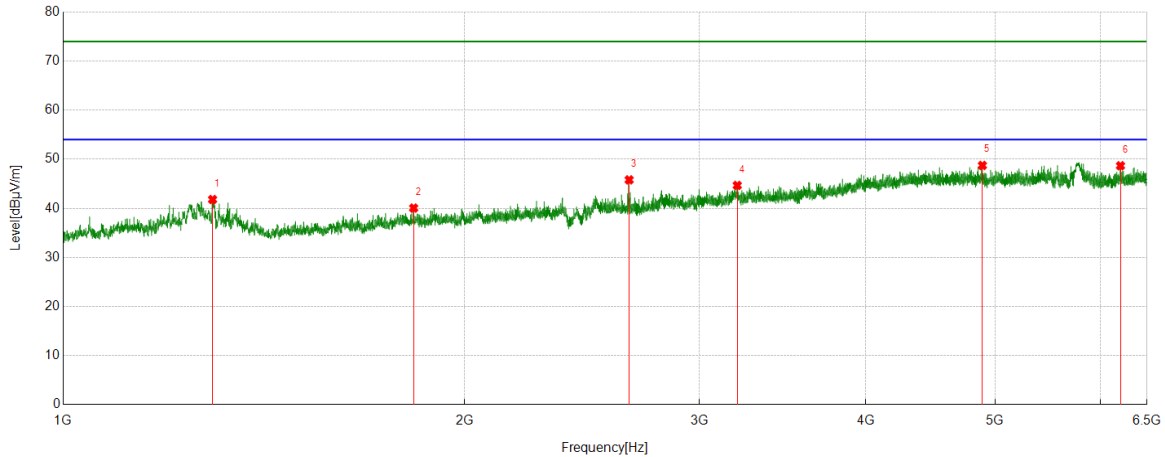
PK Result:

No.	Frequency	Reading Level	Correct Factor	Result	Limit	Margin	Remark
	[MHz]	[dBuV/m]	[dB]	[dBuV/m]	[dBuV/m]	[dB]	
1	1246.041	48.21	-5.63	42.58	74.00	-31.42	Horizontal
2	1793.4656	43.27	-3.77	39.50	74.00	-34.50	Horizontal
3	2219.5366	43.83	-2.22	41.61	74.00	-32.39	Horizontal
4	3000	42.80	1.91	44.71	74.00	-29.29	Horizontal
5	4517.6131	41.16	7.32	48.48	74.00	-25.52	Horizontal
6	1246.041	48.21	-5.63	42.58	74.00	-31.42	Horizontal

- Remark: 1. Measurement = Reading Level + Correct Factor.  
 2. If Peak Result complies with AV limit, AV Result is deemed to comply with AV limit.  
 3. Test setup: RBW: 1 MHz, VBW: 3 MHz, Sweep time: auto.  
 4. Peak: Peak detector.  
 5. AVG: VBW refer to section 6.2.  
 6. For below 6.5GHz part, filter losses were only considered in the spurious frequency bands and the authorized band were not corrected for Band Reject Filter losses.  
 The proper operation of the transmitter prior to adding the filter to the measurement chain.  
 7. Only the worst case emission was recorded, if it complies with the limit, the other emissions deemed to comply with the limit.



Test Mode	Channel	Polarization	Verdict
11AC40	5590	Vertical	PASS



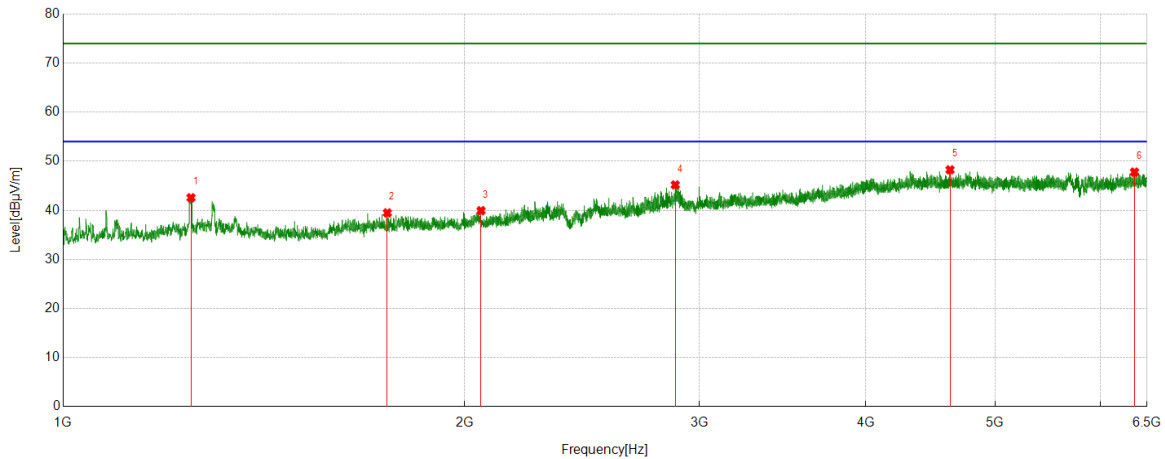
PK Result:

No.	Frequency	Reading Level	Correct Factor	Result	Limit	Margin	Remark
	[MHz]	[dBuV/m]	[dB]	[dBuV/m]	[dBuV/m]	[dB]	
1	1294.3824	47.59	-5.79	41.80	74.00	-32.20	Vertical
2	1831.8053	43.74	-3.69	40.05	74.00	-33.95	Vertical
3	2657.6096	46.50	-0.70	45.80	74.00	-28.20	Vertical
4	3203.0226	41.95	2.72	44.67	74.00	-29.33	Vertical
5	4891.3768	41.41	7.33	48.74	74.00	-25.26	Vertical
6	6208.6899	40.35	8.33	48.68	74.00	-25.32	Vertical

- Remark: 1. Measurement = Reading Level + Correct Factor.  
 2. If Peak Result complies with AV limit, AV Result is deemed to comply with AV limit.  
 3. Test setup: RBW: 1 MHz, VBW: 3 MHz, Sweep time: auto.  
 4. Peak: Peak detector.  
 5. AVG: VBW refer to section 6.2.  
 6. For below 6.5GHz part, filter losses were only considered in the spurious frequency bands and the authorized band were not corrected for Band Reject Filter losses.  
 The proper operation of the transmitter prior to adding the filter to the measurement chain.  
 7. Only the worst case emission was recorded, if it complies with the limit, the other emissions deemed to comply with the limit.



Test Mode	Channel	Polarization	Verdict
11AC40	5630	Horizontal	PASS



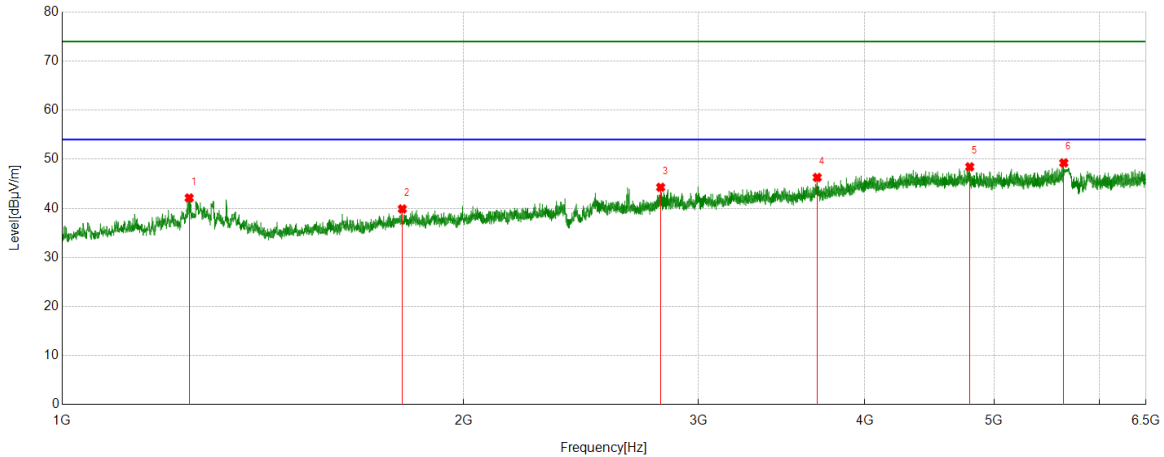
PK Result:

No.	Frequency	Reading Level	Correct Factor	Result	Limit	Margin	Remark
	[MHz]	[dBuV/m]	[dB]	[dBuV/m]	[dBuV/m]	[dB]	
1	1247.0412	48.21	-5.64	42.57	74.00	-31.43	Horizontal
2	1750.4584	43.94	-4.46	39.48	74.00	-34.52	Horizontal
3	2057.843	42.51	-2.58	39.93	74.00	-34.07	Horizontal
4	2877.9797	44.92	0.26	45.18	74.00	-28.82	Horizontal
5	4625.7362	41.29	6.97	48.26	74.00	-25.74	Horizontal
6	6361.1512	39.12	8.67	47.79	74.00	-26.21	Horizontal

- Remark: 1. Measurement = Reading Level + Correct Factor.  
 2. If Peak Result complies with AV limit, AV Result is deemed to comply with AV limit.  
 3. Test setup: RBW: 1 MHz, VBW: 3 MHz, Sweep time: auto.  
 4. Peak: Peak detector.  
 5. AVG: VBW refer to section 6.2.  
 6. For below 6.5GHz part, filter losses were only considered in the spurious frequency bands and the authorized band were not corrected for Band Reject Filter losses.  
 The proper operation of the transmitter prior to adding the filter to the measurement chain.  
 7. Only the worst case emission was recorded, if it complies with the limit, the other emissions deemed to comply with the limit.



Test Mode	Channel	Polarization	Verdict
11AC40	5630	Vertical	PASS



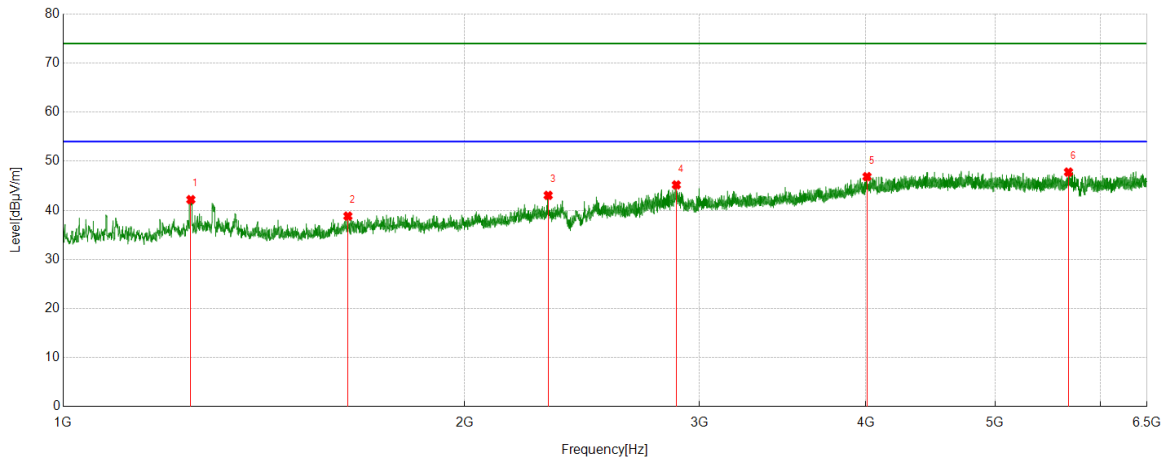
PK Result:

No.	Frequency	Reading Level	Correct Factor	Result	Limit	Margin	Remark
	[MHz]	[dBuV/m]	[dB]	[dBuV/m]	[dBuV/m]	[dB]	
1	1245.3742	47.73	-5.62	42.11	74.00	-31.89	Vertical
2	1799.4666	43.71	-3.84	39.87	74.00	-34.13	Vertical
3	2811.3019	44.51	-0.23	44.28	74.00	-29.72	Vertical
4	3683.7426	41.71	4.57	46.28	74.00	-27.72	Vertical
5	4793.7549	40.88	7.57	48.45	74.00	-25.55	Vertical
6	5639.6822	42.01	7.24	49.25	74.00	-24.75	Vertical

- Remark: 1. Measurement = Reading Level + Correct Factor.  
 2. If Peak Result complies with AV limit, AV Result is deemed to comply with AV limit.  
 3. Test setup: RBW: 1 MHz, VBW: 3 MHz, Sweep time: auto.  
 4. Peak: Peak detector.  
 5. AVG: VBW refer to section 6.2.  
 6. For below 6.5GHz part, filter losses were only considered in the spurious frequency bands and the authorized band were not corrected for Band Reject Filter losses.  
 The proper operation of the transmitter prior to adding the filter to the measurement chain.  
 7. Only the worst case emission was recorded, if it complies with the limit, the other emissions deemed to comply with the limit.



Test Mode	Channel	Polarization	Verdict
11AC40	5670	Horizontal	PASS



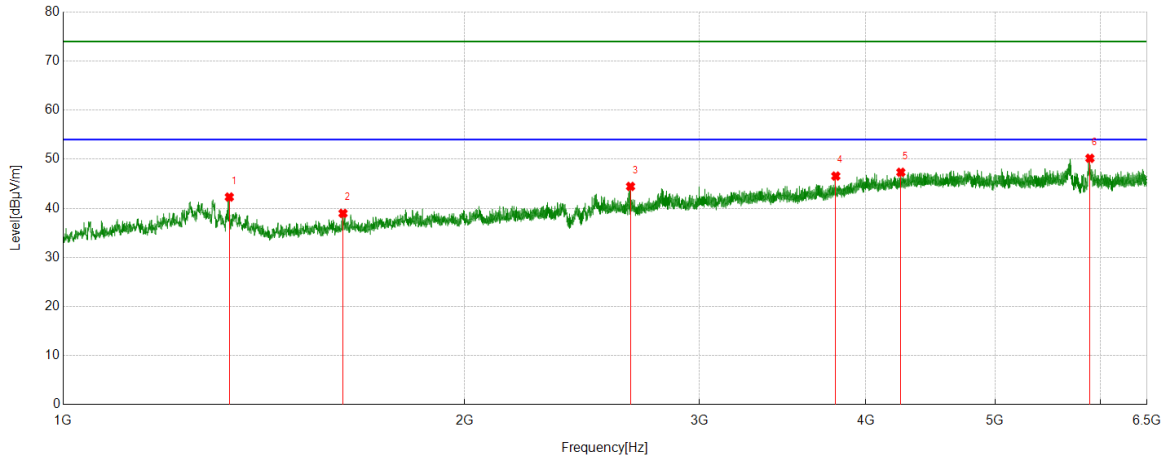
PK Result:

No.	Frequency	Reading Level	Correct Factor	Result	Limit	Margin	Remark
	[MHz]	[dBuV/m]	[dB]	[dBuV/m]	[dBuV/m]	[dB]	
1	1246.7078	47.81	-5.63	42.18	74.00	-31.82	Horizontal
2	1635.1059	43.89	-5.07	38.82	74.00	-35.18	Horizontal
3	2310.8851	44.70	-1.65	43.05	74.00	-30.95	Horizontal
4	2883.3139	44.80	0.38	45.18	74.00	-28.82	Horizontal
5	4007.7231	40.89	5.97	46.86	74.00	-27.14	Horizontal
6	5675.4639	39.91	7.88	47.79	74.00	-26.21	Horizontal

- Remark: 1. Measurement = Reading Level + Correct Factor.  
 2. If Peak Result complies with AV limit, AV Result is deemed to comply with AV limit.  
 3. Test setup: RBW: 1 MHz, VBW: 3 MHz, Sweep time: auto.  
 4. Peak: Peak detector.  
 5. AVG: VBW refer to section 6.2.  
 6. For below 6.5GHz part, filter losses were only considered in the spurious frequency bands and the authorized band were not corrected for Band Reject Filter losses.  
 The proper operation of the transmitter prior to adding the filter to the measurement chain.  
 7. Only the worst case emission was recorded, if it complies with the limit, the other emissions deemed to comply with the limit.



Test Mode	Channel	Polarization	Verdict
11AC40	5670	Vertical	PASS



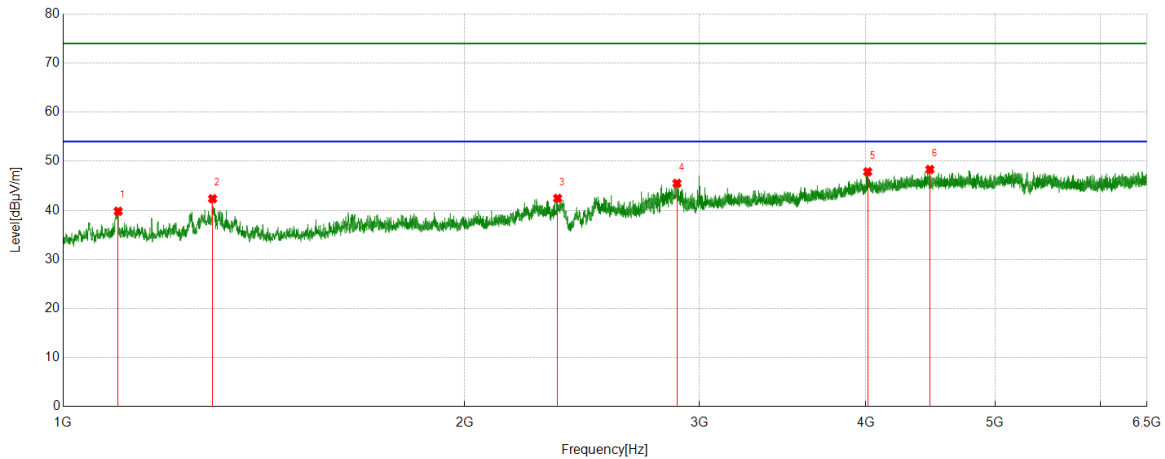
PK Result:

No.	Frequency	Reading Level	Correct Factor	Result	Limit	Margin	Remark
	[MHz]	[dBuV/m]	[dB]	[dBuV/m]	[dBuV/m]	[dB]	
1	1332.3887	47.97	-5.67	42.30	74.00	-31.70	Vertical
2	1621.4369	43.99	-5.02	38.97	74.00	-35.03	Vertical
3	2663.944	45.16	-0.70	44.46	74.00	-29.54	Vertical
4	3797.3108	41.59	4.98	46.57	74.00	-27.43	Vertical
5	4248.861	41.00	6.34	47.34	74.00	-26.66	Vertical
6	5889.3766	42.73	7.46	50.19	74.00	-23.81	Vertical

- Remark: 1. Measurement = Reading Level + Correct Factor.  
 2. If Peak Result complies with AV limit, AV Result is deemed to comply with AV limit.  
 3. Test setup: RBW: 1 MHz, VBW: 3 MHz, Sweep time: auto.  
 4. Peak: Peak detector.  
 5. AVG: VBW refer to section 6.2.  
 6. For below 6.5GHz part, filter losses were only considered in the spurious frequency bands and the authorized band were not corrected for Band Reject Filter losses.  
 The proper operation of the transmitter prior to adding the filter to the measurement chain.  
 7. Only the worst case emission was recorded, if it complies with the limit, the other emissions deemed to comply with the limit.



Test Mode	Channel	Polarization	Verdict
11AC40	5710	Horizontal	PASS



PK Result:

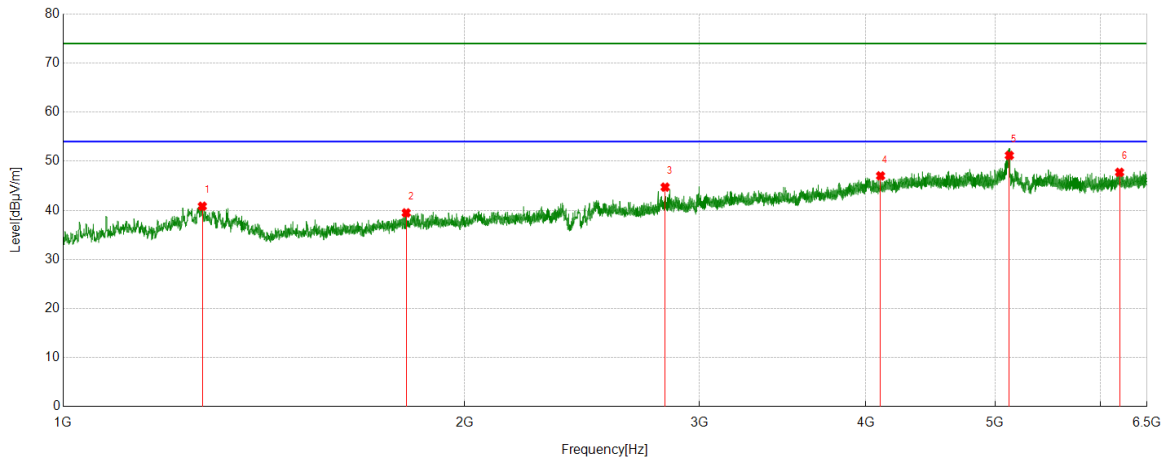
No.	Frequency	Reading Level	Correct Factor	Result	Limit	Margin	Remark
	[MHz]	[dBuV/m]	[dB]	[dBuV/m]	[dBuV/m]	[dB]	
1	1099.6833	45.39	-5.58	39.81	74.00	-34.19	Horizontal
2	1294.3824	48.15	-5.79	42.36	74.00	-31.64	Horizontal
3	2348.8915	44.13	-1.69	42.44	74.00	-31.56	Horizontal
4	2886.3144	45.05	0.45	45.50	74.00	-28.50	Horizontal
5	4012.3903	41.65	6.21	47.86	74.00	-26.14	Horizontal
6	4467.4408	41.16	7.17	48.33	74.00	-25.67	Horizontal

- Remark: 1. Measurement = Reading Level + Correct Factor.  
 2. If Peak Result complies with AV limit, AV Result is deemed to comply with AV limit.  
 3. Test setup: RBW: 1 MHz, VBW: 3 MHz, Sweep time: auto.  
 4. Peak: Peak detector.  
 5. AVG: VBW refer to section 6.2.  
 6. For below 6.5GHz part, filter losses were only considered in the spurious frequency bands and the authorized band were not corrected for Band Reject Filter losses.  
 The proper operation of the transmitter prior to adding the filter to the measurement chain.  
 7. Only the worst case emission was recorded, if it complies with the limit, the other emissions deemed to comply with the limit.





Test Mode	Channel	Polarization	Verdict
11AC40	5710	Vertical	PASS



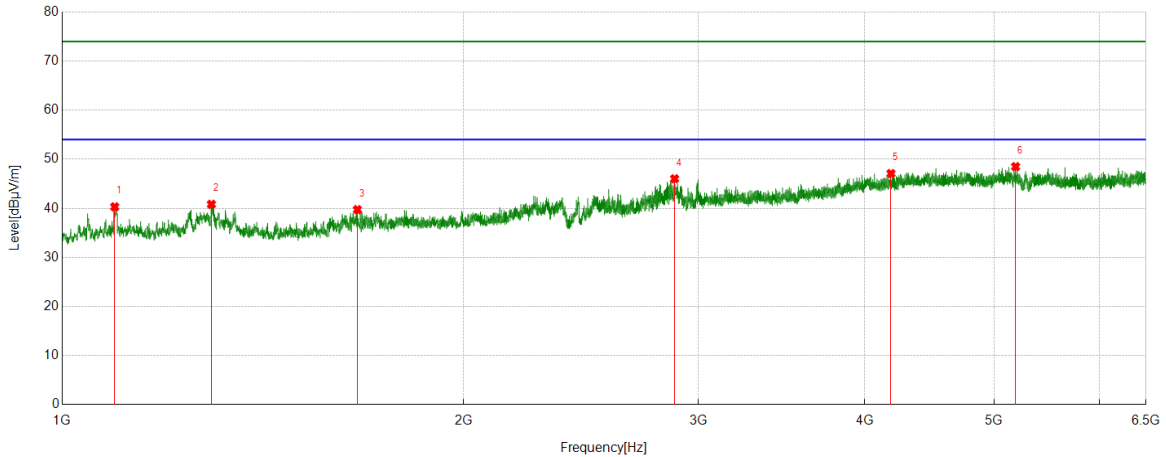
PK Result:

No.	Frequency	Reading Level	Correct Factor	Result	Limit	Margin	Remark
	[MHz]	[dBuV/m]	[dB]	[dBuV/m]	[dBuV/m]	[dB]	
1	1271.712	46.29	-5.46	40.83	74.00	-33.17	Vertical
2	1808.4681	43.53	-4.05	39.48	74.00	-34.52	Vertical
3	2827.9713	44.85	-0.13	44.72	74.00	-29.28	Vertical
4	4102.6225	41.10	5.92	47.02	74.00	-26.98	Vertical
5	5124.7361	43.17	8.01	51.18	74.00	-23.30	Vertical
6	6198.9666	39.26	8.48	47.74	74.00	-26.26	Vertical

- Remark: 1. Measurement = Reading Level + Correct Factor.  
 2. If Peak Result complies with AV limit, AV Result is deemed to comply with AV limit.  
 3. Test setup: RBW: 1 MHz, VBW: 3 MHz, Sweep time: auto.  
 4. Peak: Peak detector.  
 5. AVG: VBW refer to section 6.2.  
 6. For below 6.5GHz part, filter losses were only considered in the spurious frequency bands and the authorized band were not corrected for Band Reject Filter losses.  
 The proper operation of the transmitter prior to adding the filter to the measurement chain.  
 7. Only the worst case emission was recorded, if it complies with the limit, the other emissions deemed to comply with the limit.



Test Mode	Channel	Polarization	Verdict
11AC40	5755	Horizontal	PASS



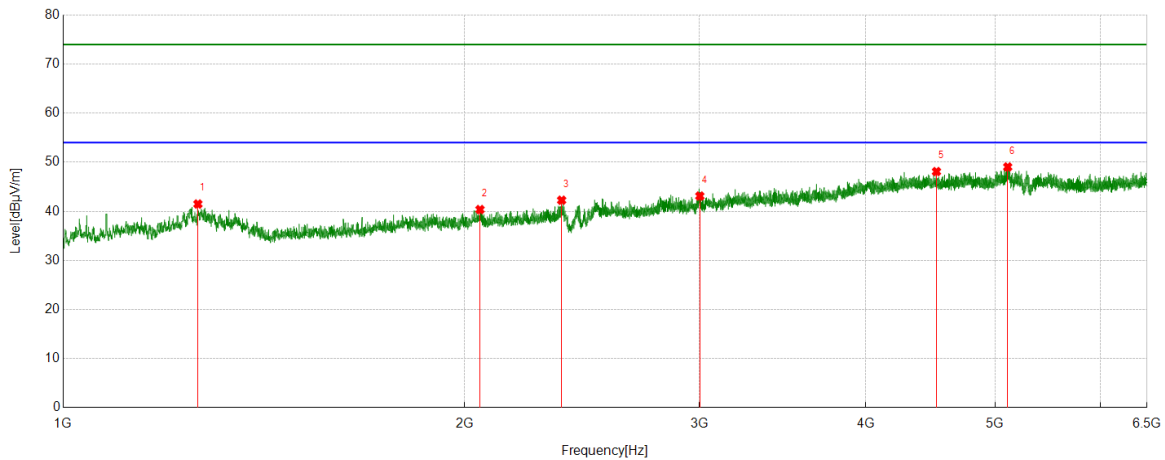
PK Result:

No.	Frequency	Reading Level	Correct Factor	Result	Limit	Margin	Remark
	[MHz]	[dBuV/m]	[dB]	[dBuV/m]	[dBuV/m]	[dB]	
1	1095.0158	45.89	-5.59	40.30	74.00	-33.70	Horizontal
2	1294.049	46.59	-5.78	40.81	74.00	-33.19	Horizontal
3	1665.1109	44.61	-4.87	39.74	74.00	-34.26	Horizontal
4	2879.6466	45.73	0.29	46.02	74.00	-27.98	Horizontal
5	4184.2983	40.99	6.09	47.08	74.00	-26.92	Horizontal
6	5188.9099	40.57	7.92	48.49	74.00	-25.51	Horizontal

- Remark: 1. Measurement = Reading Level + Correct Factor.  
 2. If Peak Result complies with AV limit, AV Result is deemed to comply with AV limit.  
 3. Test setup: RBW: 1 MHz, VBW: 3 MHz, Sweep time: auto.  
 4. Peak: Peak detector.  
 5. AVG: VBW refer to section 6.2.  
 6. For below 6.5GHz part, filter losses were only considered in the spurious frequency bands and the authorized band were not corrected for Band Reject Filter losses.  
 The proper operation of the transmitter prior to adding the filter to the measurement chain.  
 7. Only the worst case emission was recorded, if it complies with the limit, the other emissions deemed to comply with the limit.



Test Mode	Channel	Polarization	Verdict
11AC40	5755	Vertical	PASS



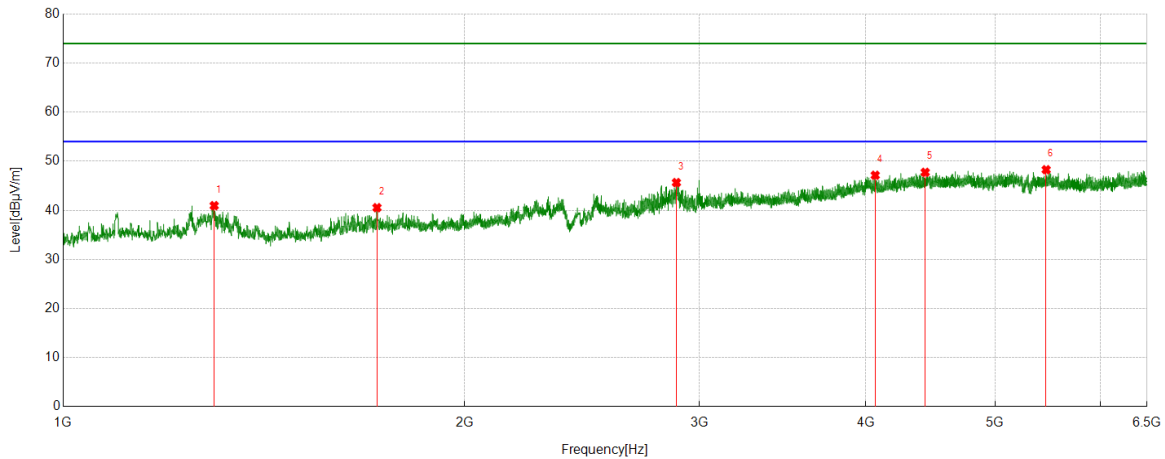
PK Result:

No.	Frequency	Reading Level	Correct Factor	Result	Limit	Margin	Remark
	[MHz]	[dBuV/m]	[dB]	[dBuV/m]	[dBuV/m]	[dB]	
1	1262.0437	47.14	-5.65	41.49	74.00	-32.51	Vertical
2	2054.1757	42.85	-2.49	40.36	74.00	-33.64	Vertical
3	2365.2275	43.42	-1.16	42.26	74.00	-31.74	Vertical
4	3002.7225	41.23	1.88	43.11	74.00	-30.89	Vertical
5	4518.3909	40.84	7.26	48.10	74.00	-25.90	Vertical
6	5109.9567	41.03	8.01	49.04	74.00	-24.96	Vertical

- Remark: 1. Measurement = Reading Level + Correct Factor.  
 2. If Peak Result complies with AV limit, AV Result is deemed to comply with AV limit.  
 3. Test setup: RBW: 1 MHz, VBW: 3 MHz, Sweep time: auto.  
 4. Peak: Peak detector.  
 5. AVG: VBW refer to section 6.2.  
 6. For below 6.5GHz part, filter losses were only considered in the spurious frequency bands and the authorized band were not corrected for Band Reject Filter losses.  
 The proper operation of the transmitter prior to adding the filter to the measurement chain.  
 7. Only the worst case emission was recorded, if it complies with the limit, the other emissions deemed to comply with the limit.



Test Mode	Channel	Polarization	Verdict
11AC40	5795	Horizontal	PASS



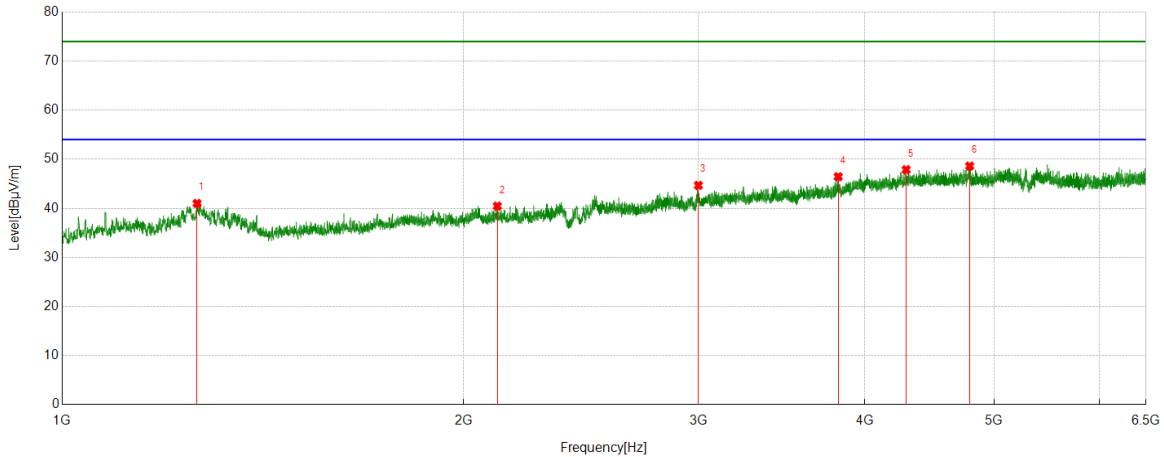
PK Result:

No.	Frequency	Reading Level	Correct Factor	Result	Limit	Margin	Remark
	[MHz]	[dBuV/m]	[dB]	[dBuV/m]	[dBuV/m]	[dB]	
1	1298.0497	46.77	-5.82	40.95	74.00	-33.05	Horizontal
2	1719.4532	44.85	-4.31	40.54	74.00	-33.46	Horizontal
3	2883.6473	45.26	0.39	45.65	74.00	-28.35	Horizontal
4	4065.285	41.15	5.99	47.14	74.00	-26.86	Horizontal
5	4431.6591	40.84	6.90	47.74	74.00	-26.26	Horizontal
6	5460.7734	40.31	7.96	48.27	74.00	-25.73	Horizontal

- Remark: 1. Measurement = Reading Level + Correct Factor.  
 2. If Peak Result complies with AV limit, AV Result is deemed to comply with AV limit.  
 3. Test setup: RBW: 1 MHz, VBW: 3 MHz, Sweep time: auto.  
 4. Peak: Peak detector.  
 5. AVG: VBW refer to section 6.2.  
 6. For below 6.5GHz part, filter losses were only considered in the spurious frequency bands and the authorized band were not corrected for Band Reject Filter losses.  
 The proper operation of the transmitter prior to adding the filter to the measurement chain.  
 7. Only the worst case emission was recorded, if it complies with the limit, the other emissions deemed to comply with the limit.



Test Mode	Channel	Polarization	Verdict
11AC40	5795	Vertical	PASS



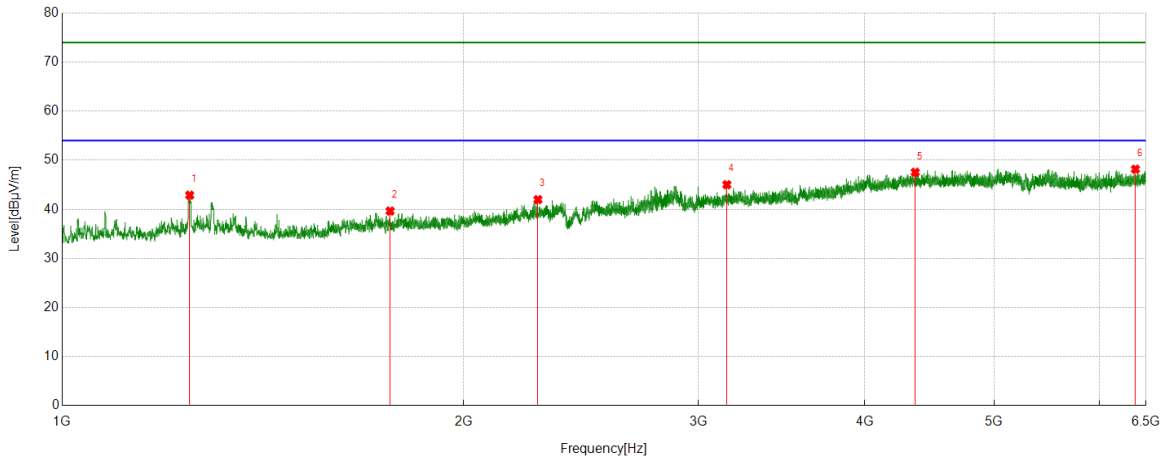
PK Result:

No.	Frequency	Reading Level	Correct Factor	Result	Limit	Margin	Remark
	[MHz]	[dBuV/m]	[dB]	[dBuV/m]	[dBuV/m]	[dB]	
1	1262.3771	46.63	-5.64	40.99	74.00	-33.01	Vertical
2	2120.1867	42.85	-2.40	40.45	74.00	-33.55	Vertical
3	3000.3889	42.77	1.91	44.68	74.00	-29.32	Vertical
4	3819.8689	41.02	5.42	46.44	74.00	-27.56	Vertical
5	4295.5328	41.22	6.65	47.87	74.00	-26.13	Vertical
6	4793.3659	40.83	7.78	48.61	74.00	-25.39	Vertical

- Remark: 1. Measurement = Reading Level + Correct Factor.  
 2. If Peak Result complies with AV limit, AV Result is deemed to comply with AV limit.  
 3. Test setup: RBW: 1 MHz, VBW: 3 MHz, Sweep time: auto.  
 4. Peak: Peak detector.  
 5. AVG: VBW refer to section 6.2.  
 6. For below 6.5GHz part, filter losses were only considered in the spurious frequency bands and the authorized band were not corrected for Band Reject Filter losses.  
 The proper operation of the transmitter prior to adding the filter to the measurement chain.  
 7. Only the worst case emission was recorded, if it complies with the limit, the other emissions deemed to comply with the limit.



Test Mode	Channel	Polarization	Verdict
11AC80	5210	Horizontal	PASS



PK Result:

No.	Frequency	Reading Level	Correct Factor	Result	Limit	Margin	Remark
	[MHz]	[dBuV/m]	[dB]	[dBuV/m]	[dBuV/m]	[dB]	
1	1246.3744	48.51	-5.63	42.88	74.00	-31.12	Horizontal
2	1761.7936	43.75	-4.10	39.65	74.00	-34.35	Horizontal
3	2274.2124	44.01	-2.03	41.98	74.00	-32.02	Horizontal
4	3151.6835	42.52	2.50	45.02	74.00	-28.98	Horizontal
5	4363.596	40.87	6.68	47.55	74.00	-26.45	Horizontal
6	6382.1536	39.14	9.04	48.18	74.00	-25.82	Horizontal

- Remark: 1. Measurement = Reading Level + Correct Factor.  
 2. If Peak Result complies with AV limit, AV Result is deemed to comply with AV limit.  
 3. Test setup: RBW: 1 MHz, VBW: 3 MHz, Sweep time: auto.  
 4. Peak: Peak detector.  
 5. AVG: VBW refer to section 6.2.  
 6. For below 6.5GHz part, filter losses were only considered in the spurious frequency bands and the authorized band were not corrected for Band Reject Filter losses.  
 The proper operation of the transmitter prior to adding the filter to the measurement chain.  
 7. Only the worst case emission was recorded, if it complies with the limit, the other emissions deemed to comply with the limit.