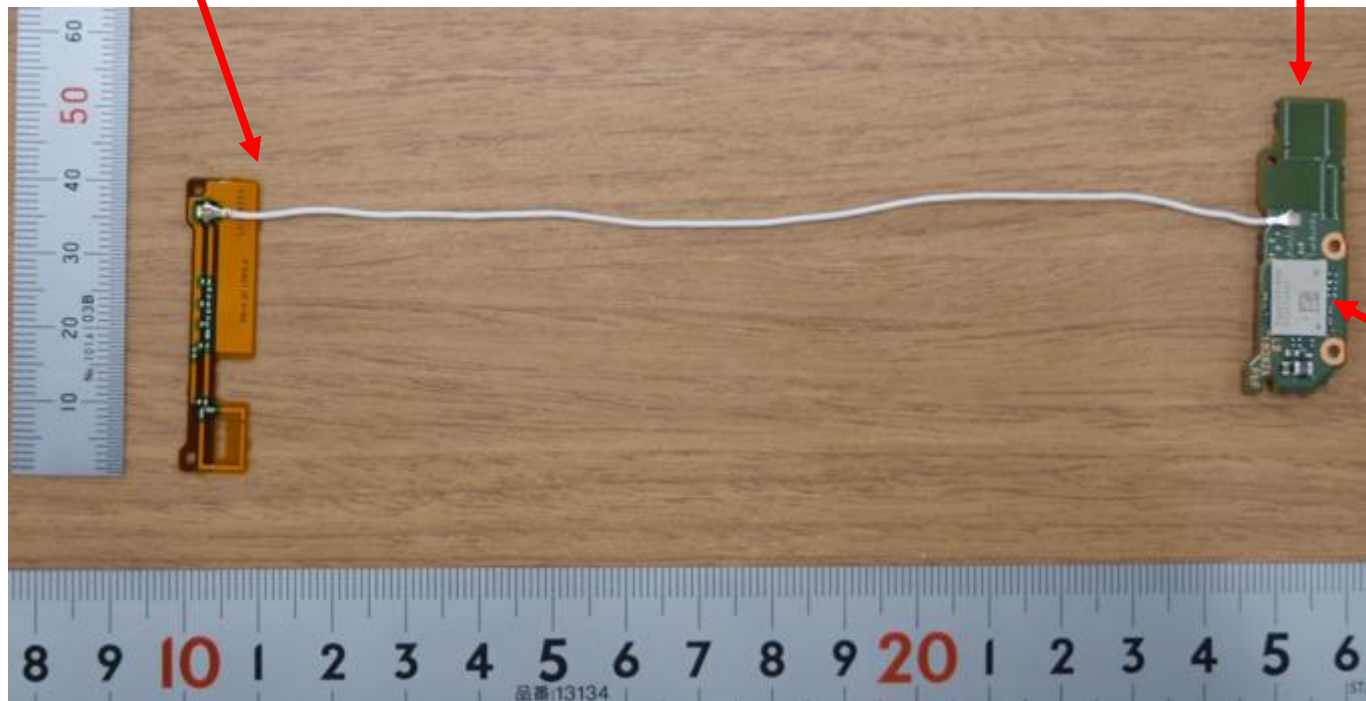


Photo (block of Module and Antenna in host)

Antenna1 1VY DC1231
(PCB + coaxial cable)

Antenna0 1VY DC1231
(PCB)



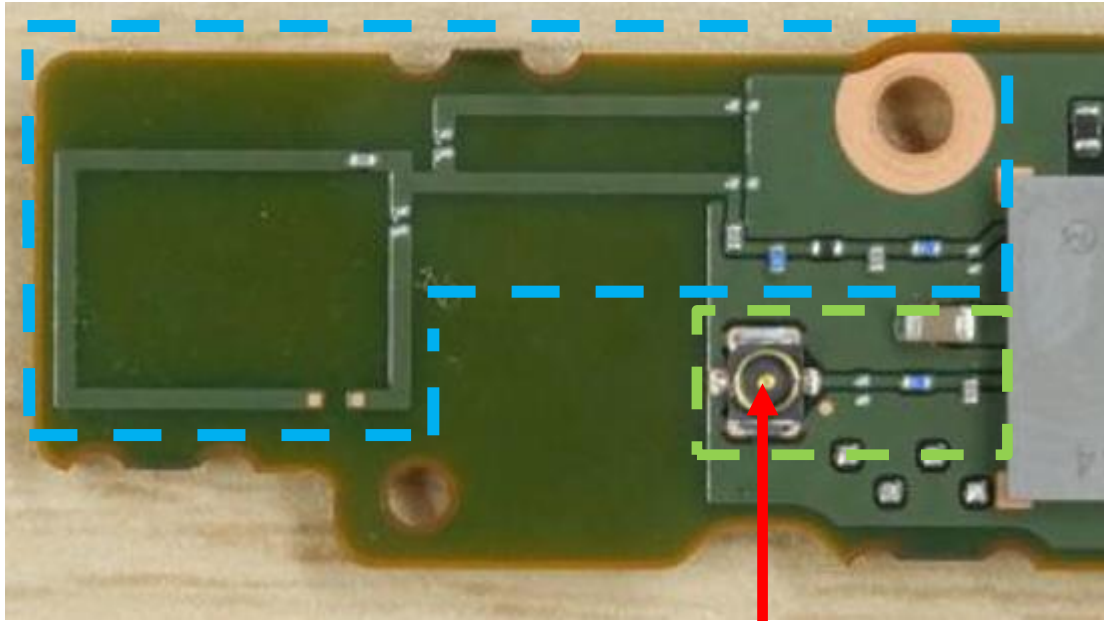
Module
(Type1VY-934)

The host antenna layout (include feed line) is same as original.

* The color of RF cable is different from original, but its specification is same as original.

Photo (block of Module and Antenna in host)

Antenna0 1VY DC1231



Antenna1 1VY DC1231

