

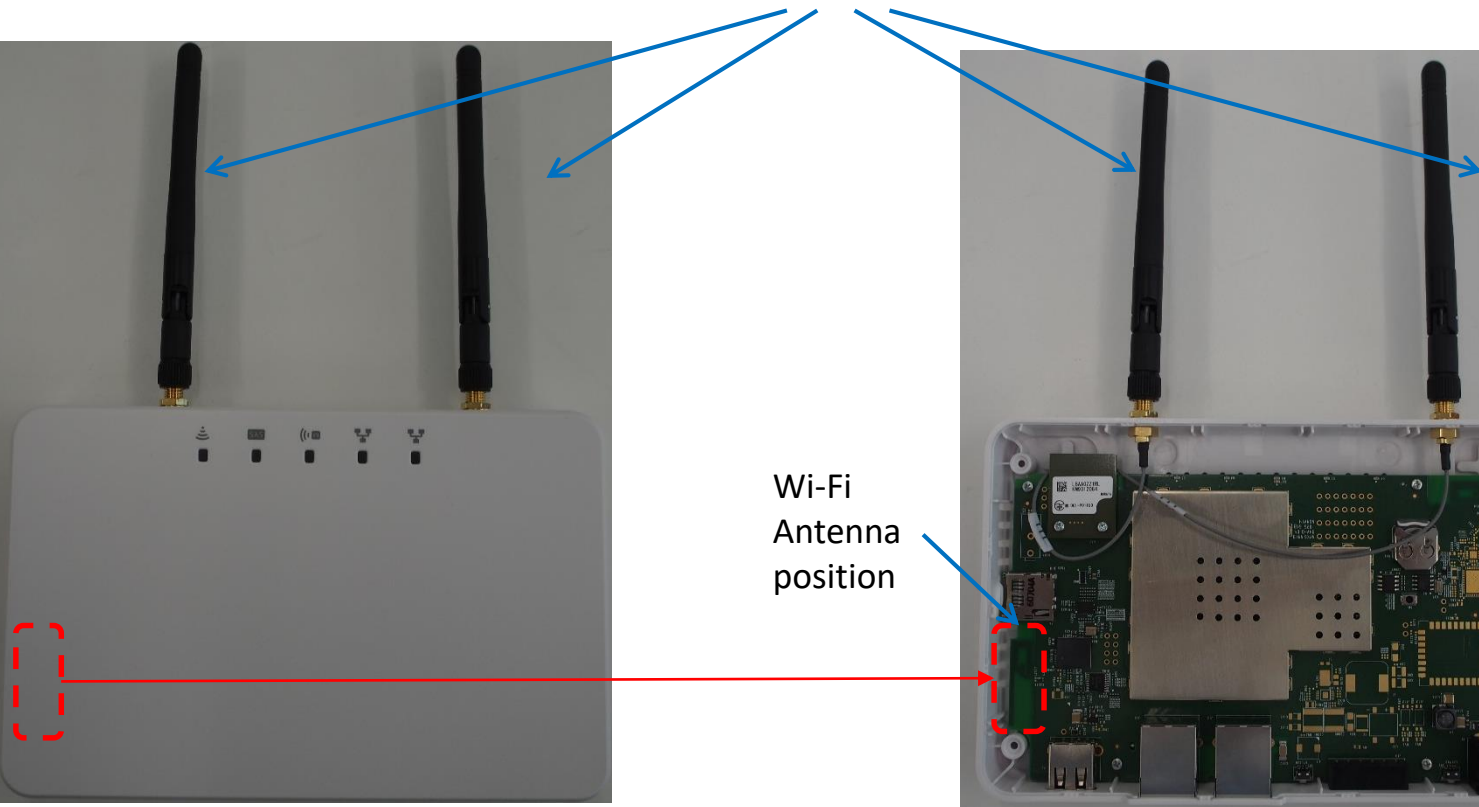
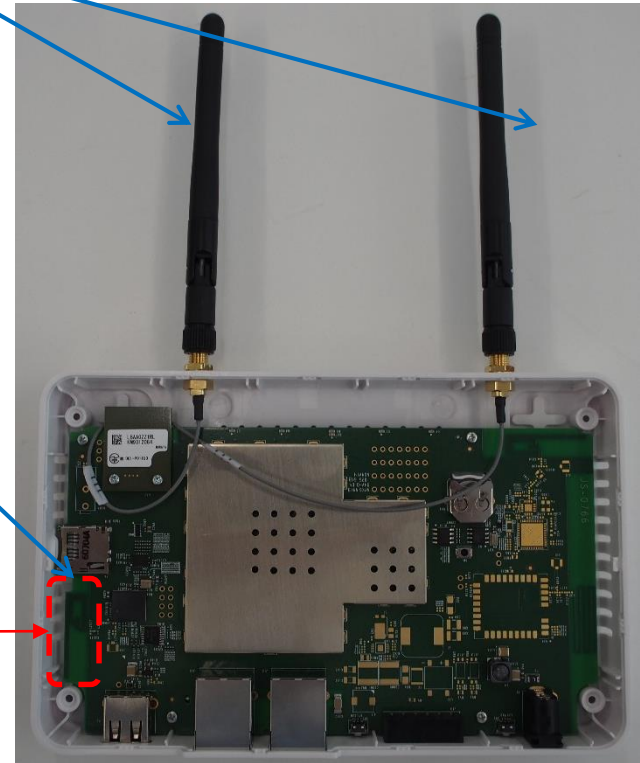
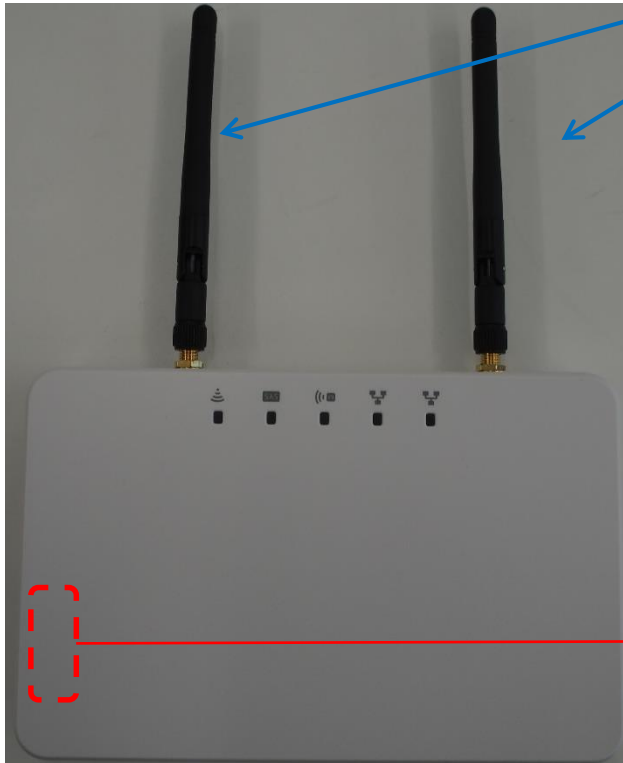
LBAC0ZZ1SU Internal Photo (1)

Internal

Front side (Cover side)

SubGHz
Antenna
position

Wi-Fi
Antenna
position

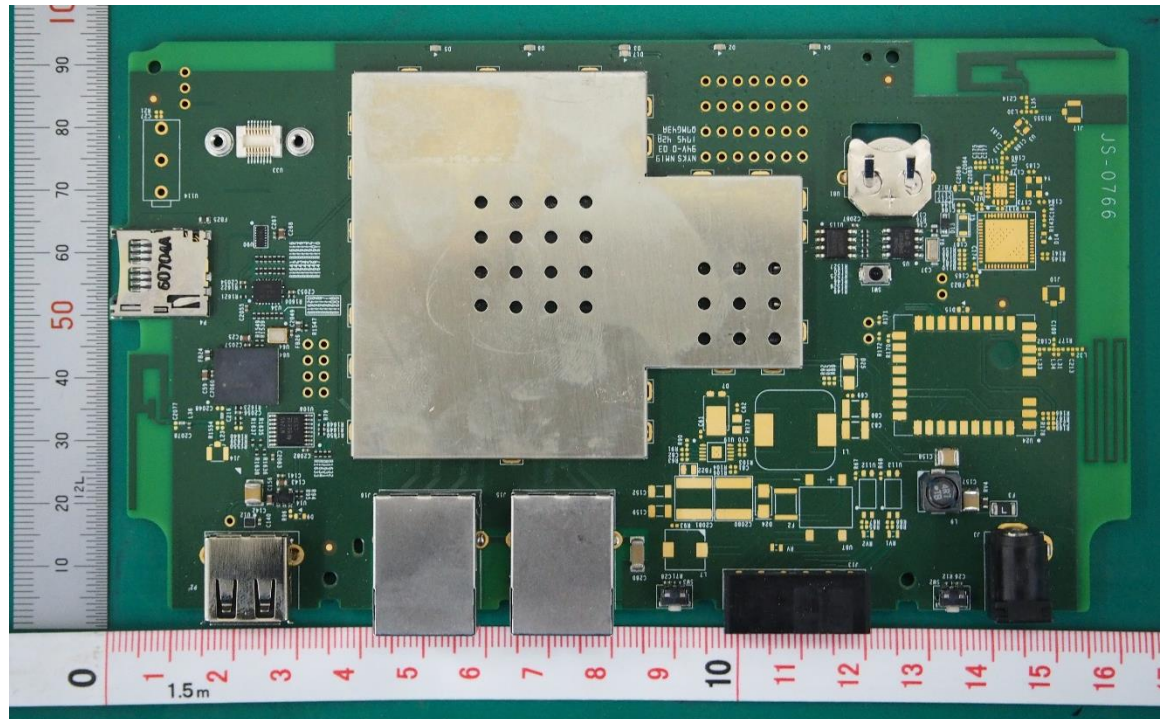


LBAC0ZZ1SU Internal Photo (2)

Component mounting board



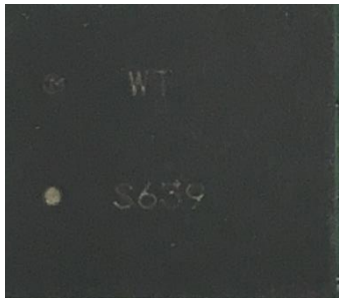
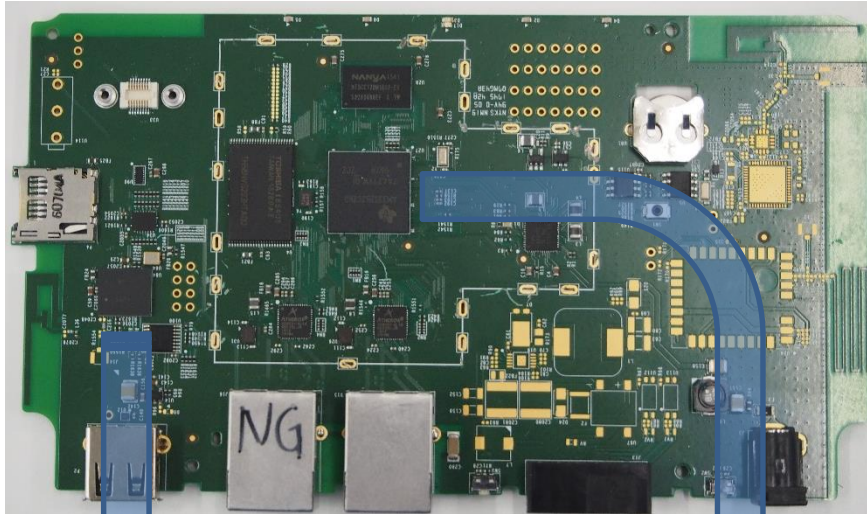
Width : 161.0mm
Height : 93.5mm
Depth : 17.5mm



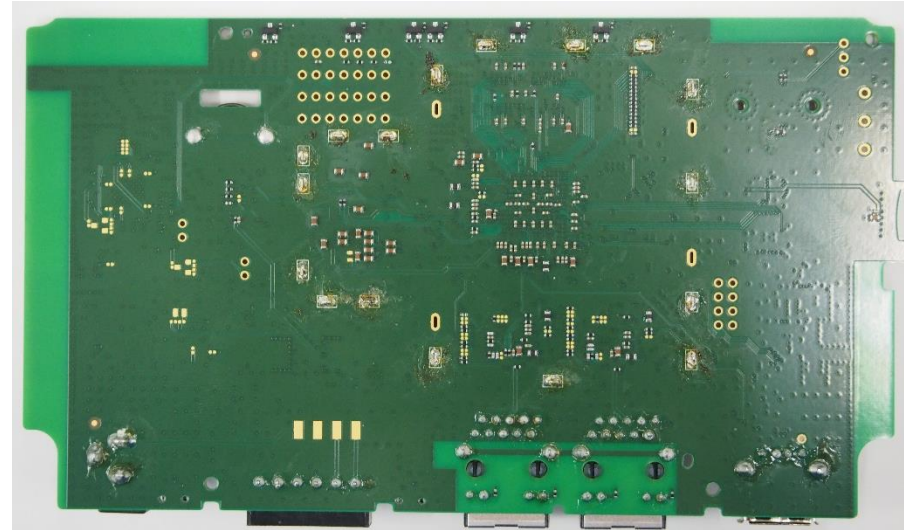
LBAC0ZZ1SU Internal Photo (3)

Component mounting board

Front Side



Back Side

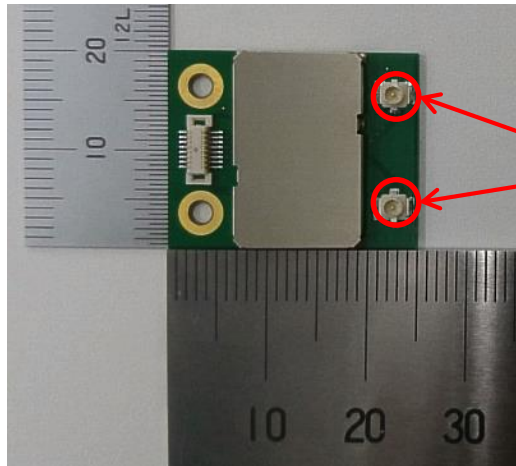


LBAC0ZZ1SU Internal Photo (4)

SubGHz module board (LBAA0ZZ1RL)

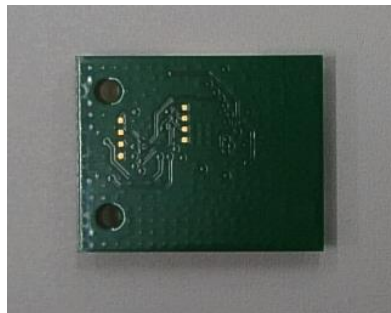
External

Front side



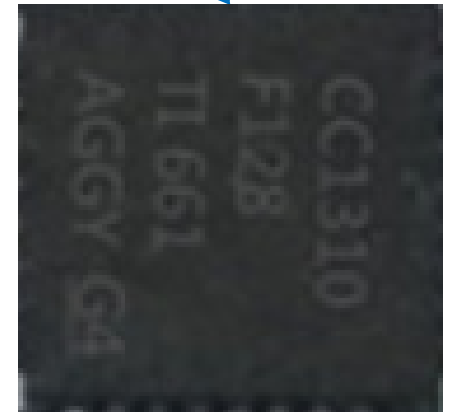
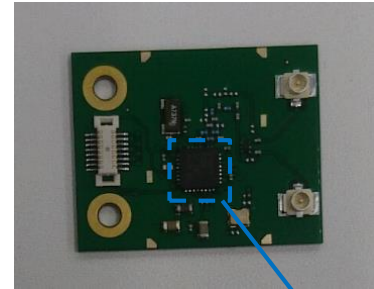
Antenna Connector

Back side



Internal

Front side



LBAC0ZZ1SU Internal Photo (5)

SubGHz module board (LBAA0ZZ1RL)

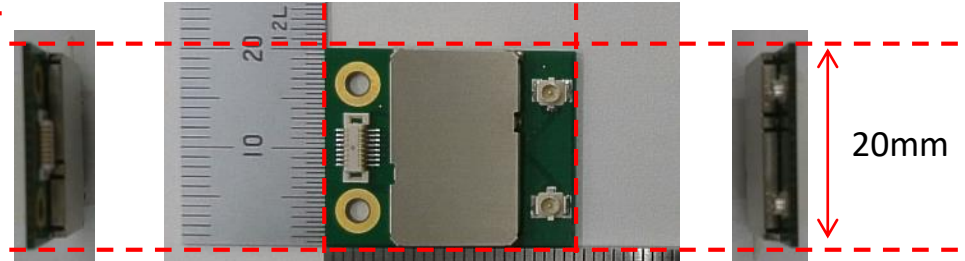
2.3mm



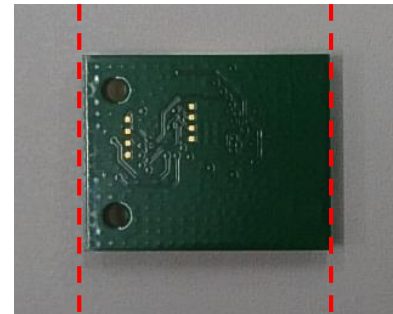
25mm



20mm



Width : 25mm
Height : 20mm
Depth : 2.3mm



LBAC0ZZ1SU Internal Photo (6)

SubGHz module board (LBAA0ZZ1RL)

Module with antenna

Max thickness: 3.3mm

Max length: 280mm



Antenna connector type



Female type



Male type

