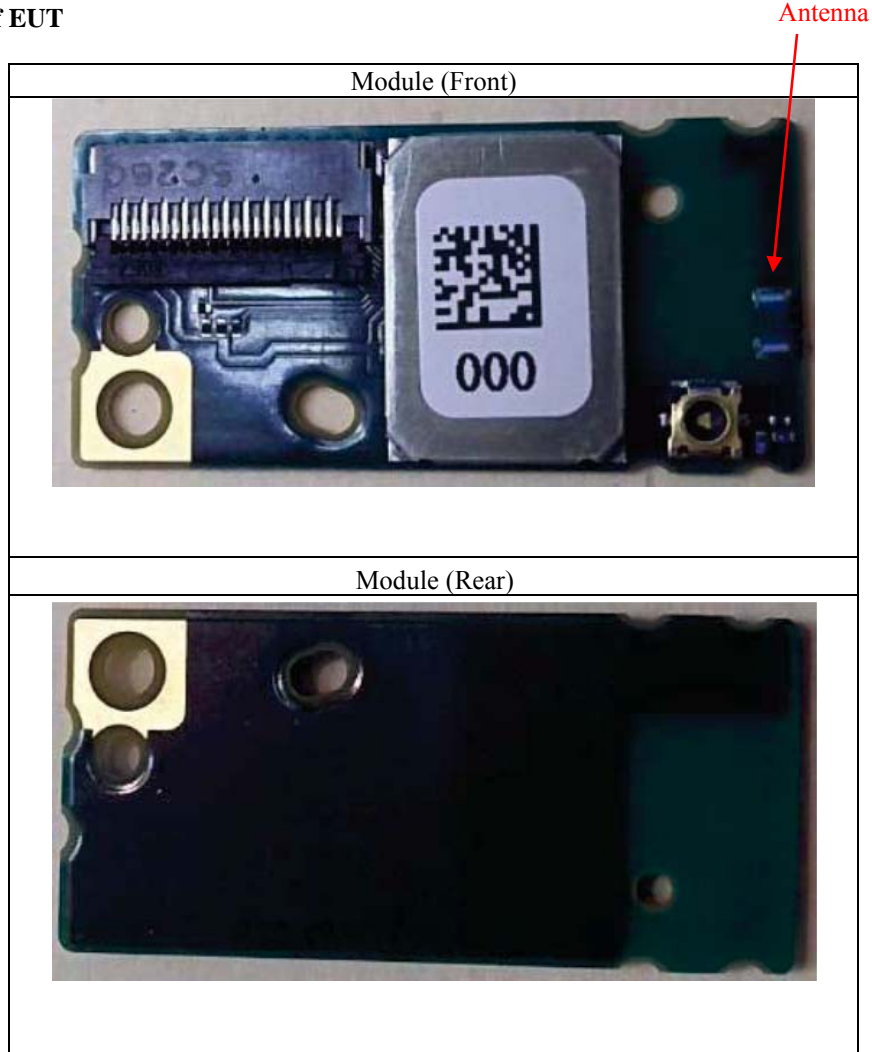


**APPENDIX 4: Photographs of test setup**

**1. Photographs of EUT**



## 2. Photographs of host device

### <Information of the Host device>

Type of Equipment	:	Digital Camera
Model No.	:	N1511
Serial No.	:	1005 (for WLAN), 1009 (for Bluetooth)
Rating	:	DC 3.7V, 1050mAh, 3.9Wh (Battery) DC 5.0V, 1.0A (AC Adapter)
Size of Host device	:	113.0 x 66.5 x 39.9 mm
Receipt Date of Sample	:	January 12, 2016

Front



Rear



Left



Right



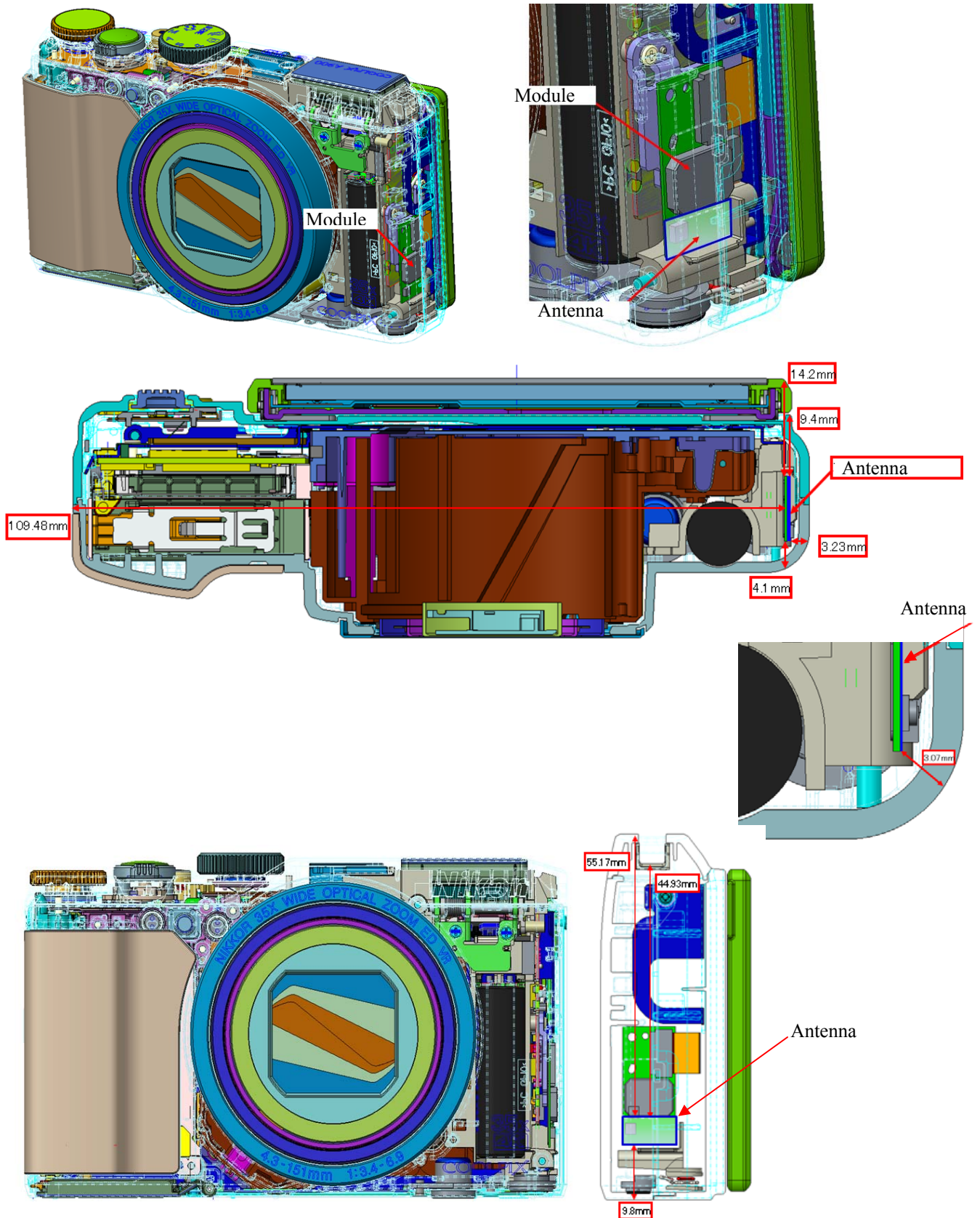
Top



Bottom

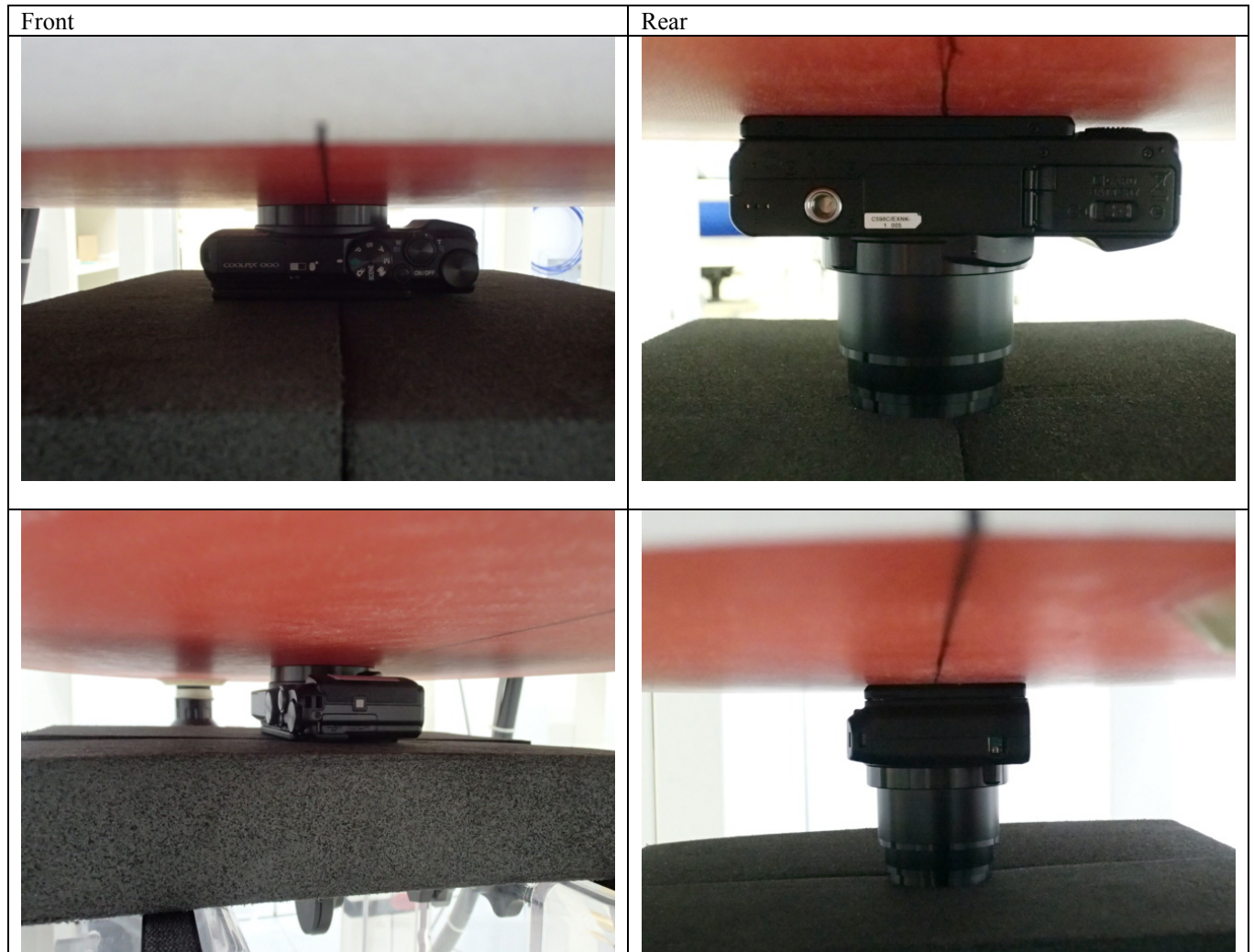


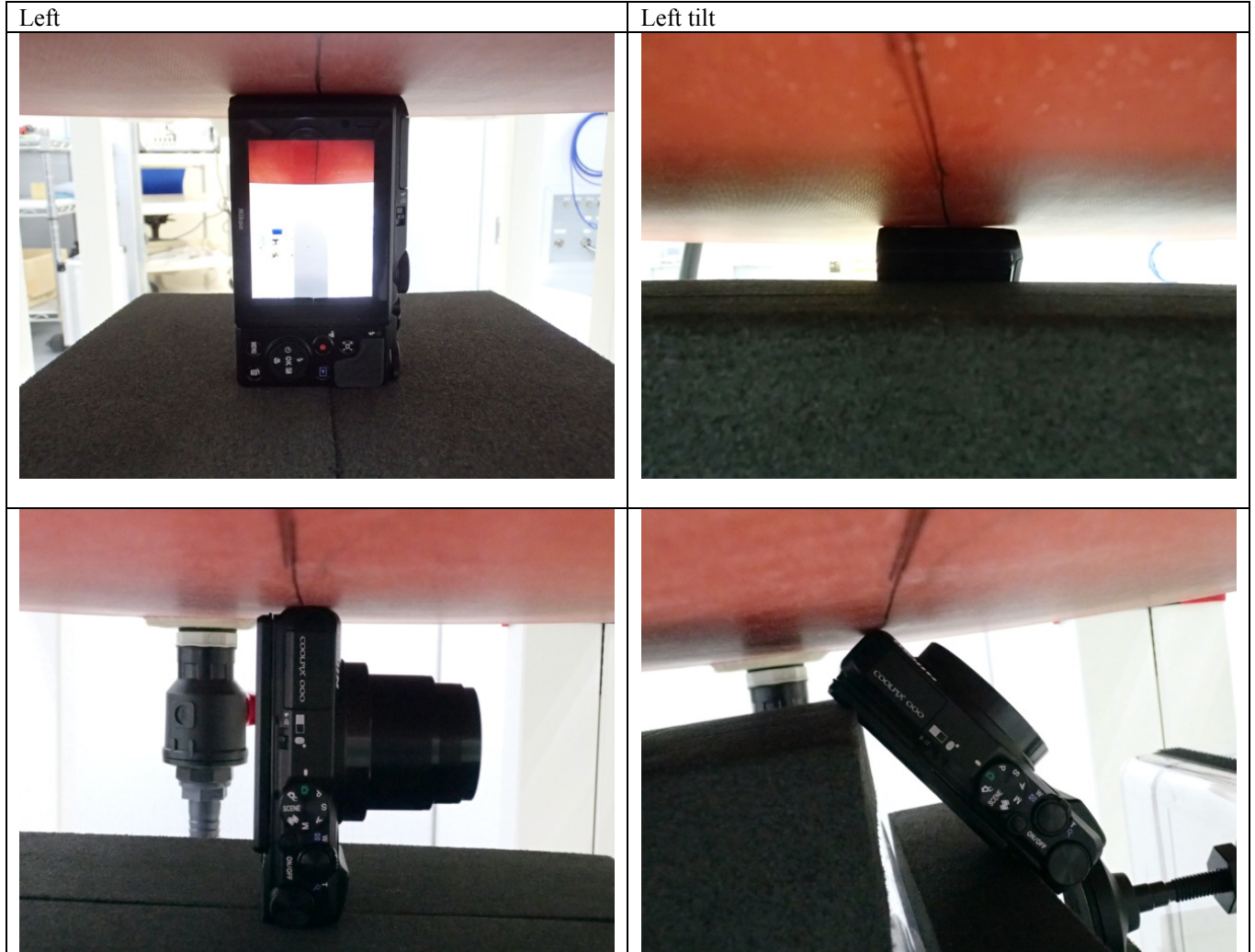
### 3. Antenna position





#### 4. Photographs of setup

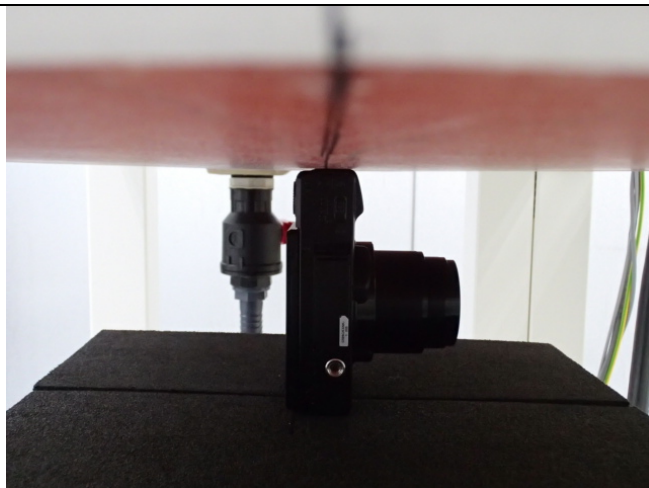




Right

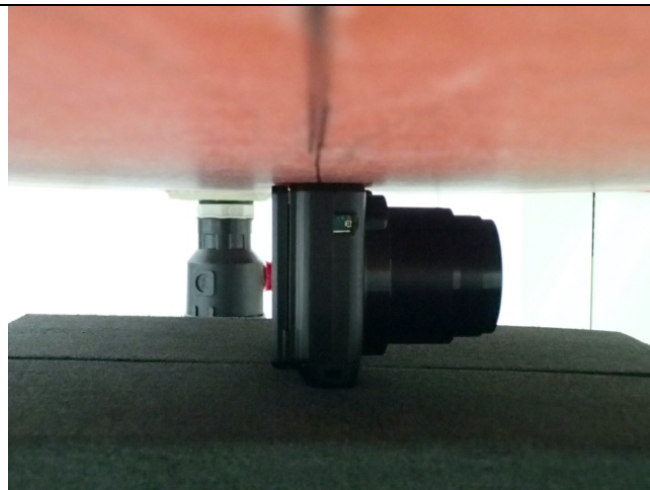


Top





Bottom



**End of Report**