

APPENDIX 3: Photographs of test setup

Conducted Emission



Photo 1

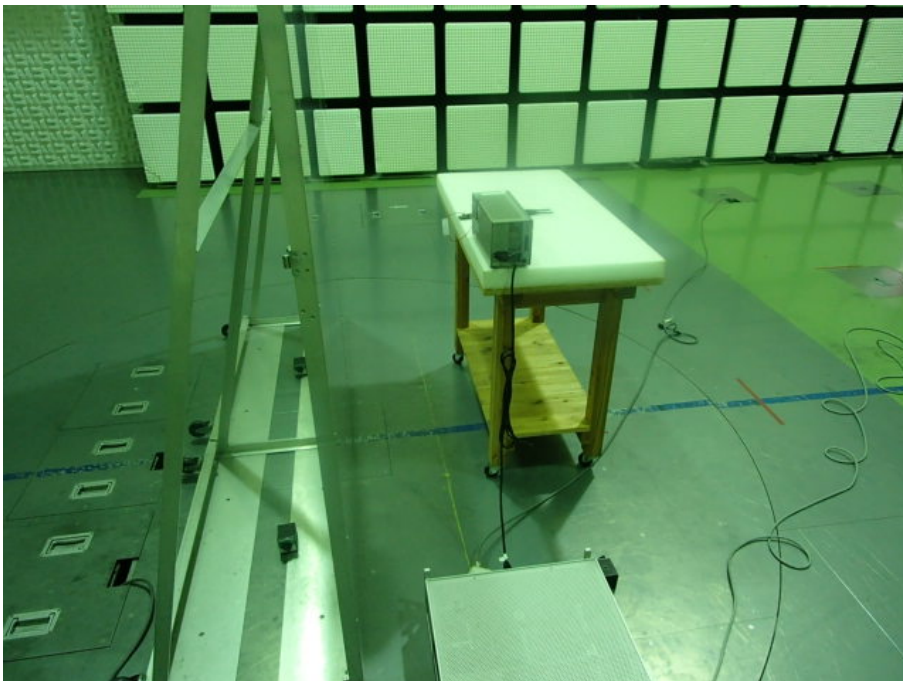


Photo 2

UL Japan, Inc.
Ise EMC Lab.

4383-326 Asama-cho, Ise-shi, Mie-ken 516-0021 JAPAN

Telephone : +81 596 24 8999

Facsimile : +81 596 24 8124

Radiated Spurious Emission
(WLAN)



Photo 1

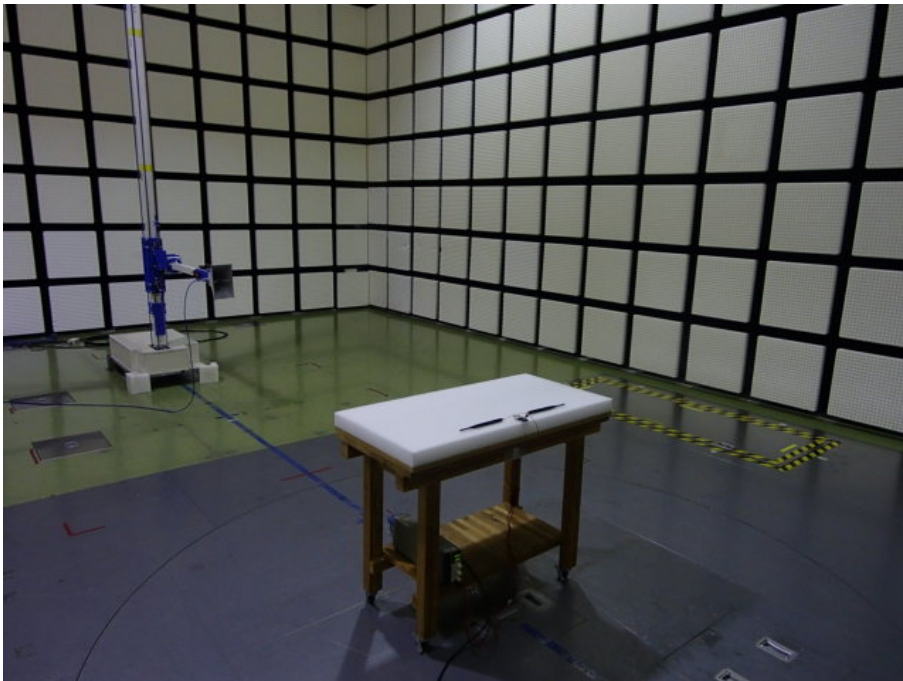


Photo 2

UL Japan, Inc.
Ise EMC Lab.

4383-326 Asama-cho, Ise-shi, Mie-ken 516-0021 JAPAN

Telephone : +81 596 24 8999

Facsimile : +81 596 24 8124

Radiated Spurious Emission
(BT LE)



Photo 1

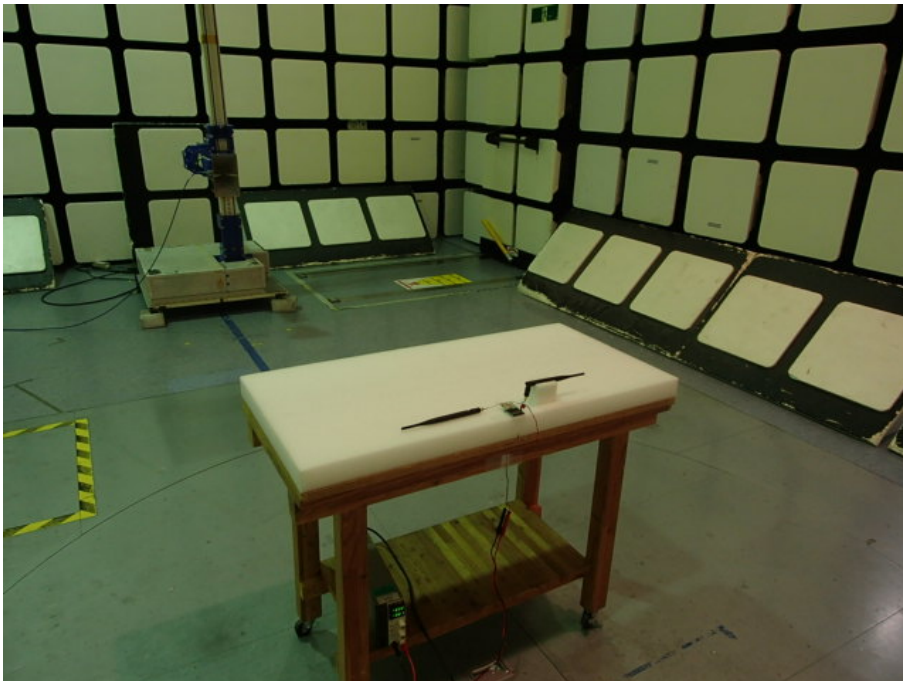


Photo 2

UL Japan, Inc.
Ise EMC Lab.

4383-326 Asama-cho, Ise-shi, Mie-ken 516-0021 JAPAN

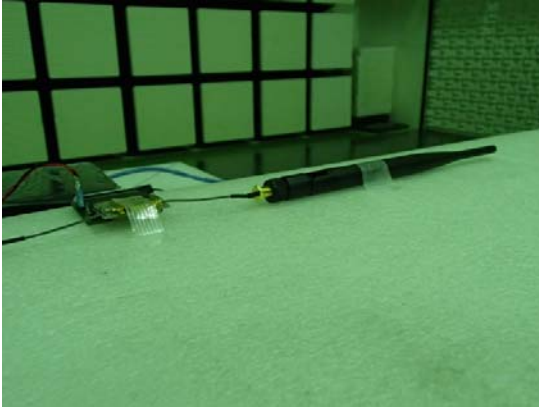
Telephone : +81 596 24 8999

Facsimile : +81 596 24 8124

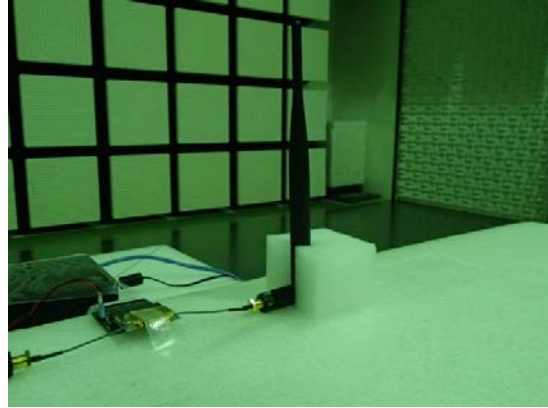
Worst Case Position
(Antenna)

(Horizontal: Z1(0deg) / Vertical: Y1(0deg)) (Above 1GHz)(WLAN)
(Horizontal: Y1(90deg) / Vertical: Y1(0deg)) (Above 1GHz)(BT LE)
(Horizontal: X1(0deg) / Vertical: X1(0deg)) (Below 1GHz)

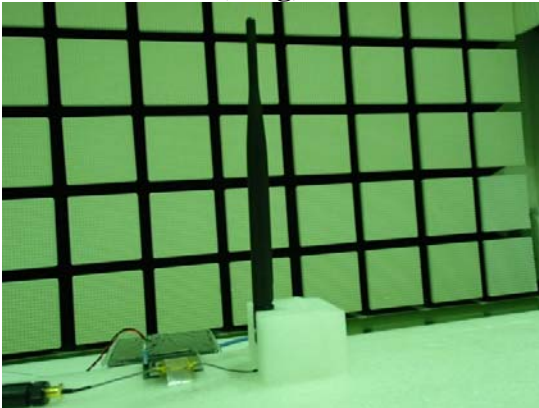
X1(0deg)-axis



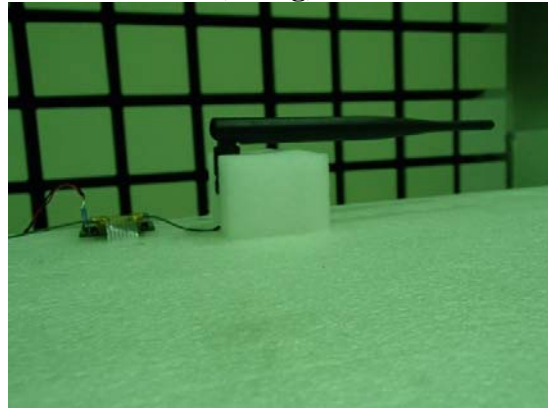
X1(90deg)-axis



Y1(0deg)-axis



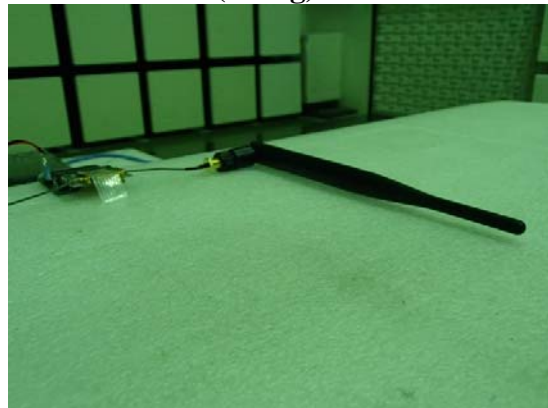
Y1(90deg)-axis



Z1(0deg)-axis



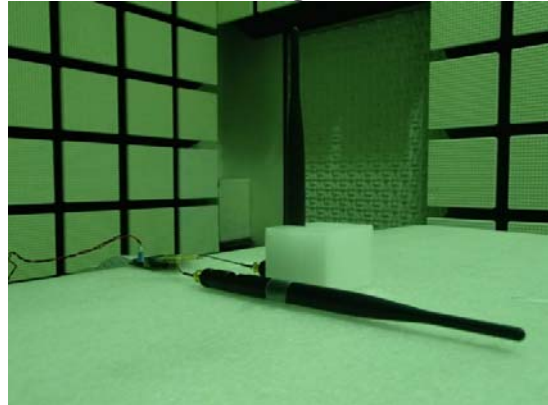
Z1(90deg)-axis



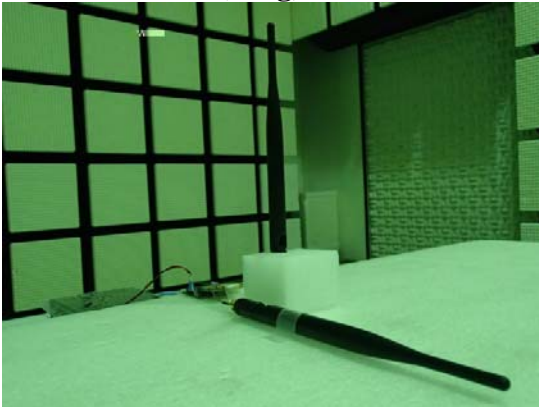
X2(0deg)-axis



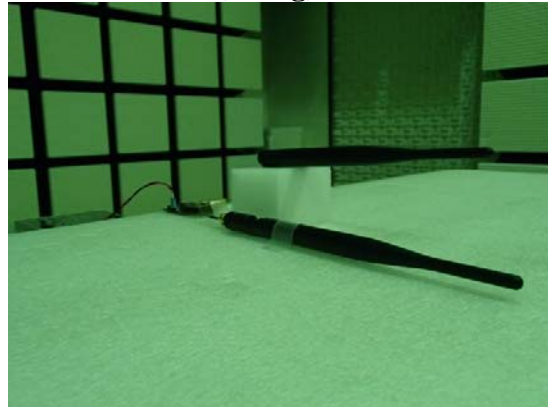
X2(90deg)-axis



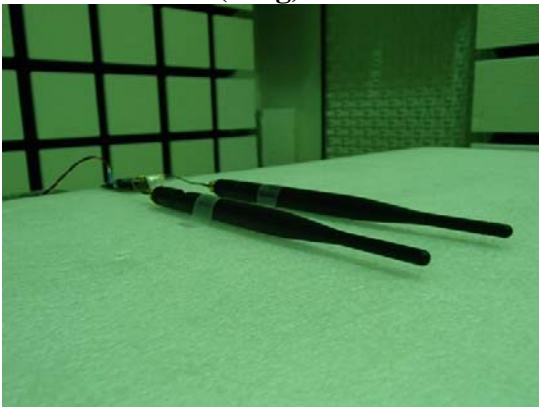
Y2(0deg)-axis



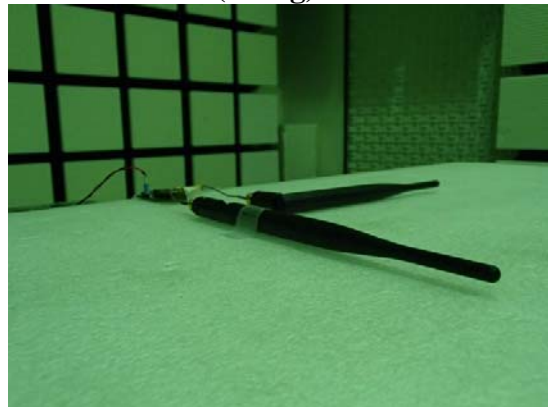
Y2(90deg)-axis



Z2(0deg)-axis



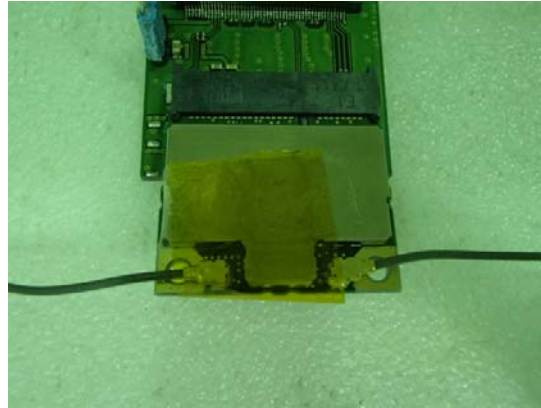
Z2(90deg)-axis



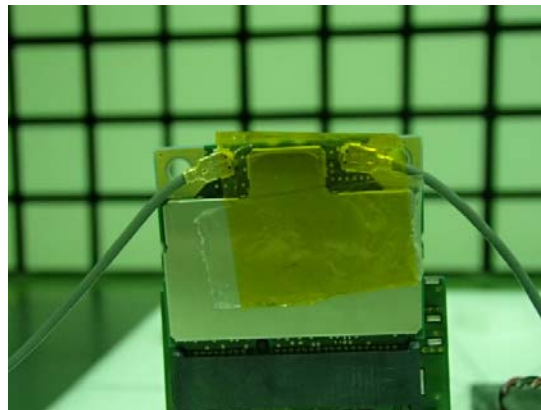
Worst Case Position
(Module)

(Horizontal: X-axis/ Vertical: X-axis)

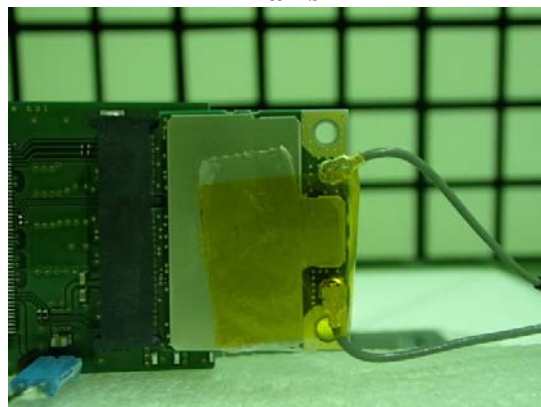
X-axis



Y-axis



Z-axis



End of Report

UL Japan, Inc.
Ise EMC Lab.

4383-326 Asama-cho, Ise-shi, Mie-ken 516-0021 JAPAN

Telephone : +81 596 24 8999

Facsimile : +81 596 24 8124