



INTERNAL PHOTOS

Written by : JL JAMET & O. ROY

June 17, 2008

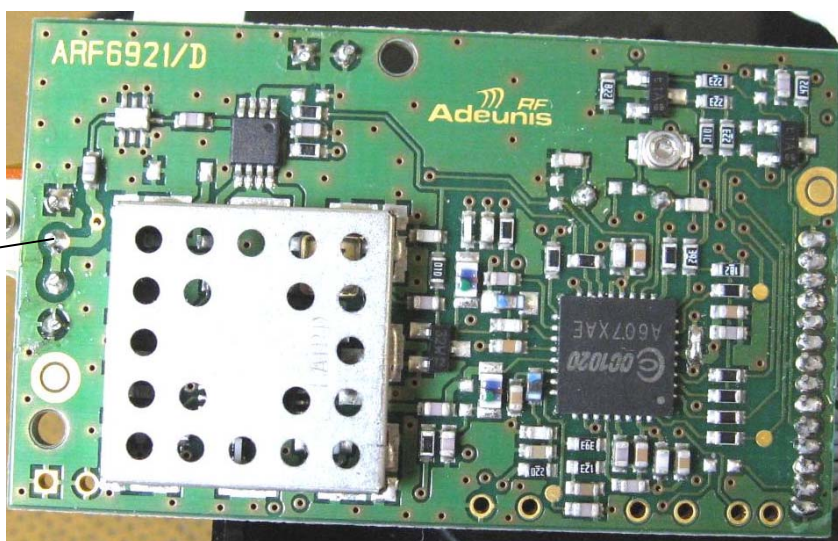
Test report # : 027115-CC-1-a

1.2 DETAILS :

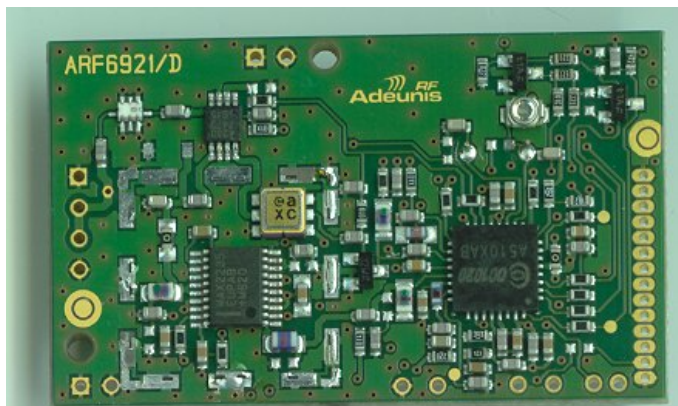
RF module

Top side

Antenna connexion  
through IRDA  
daughter board

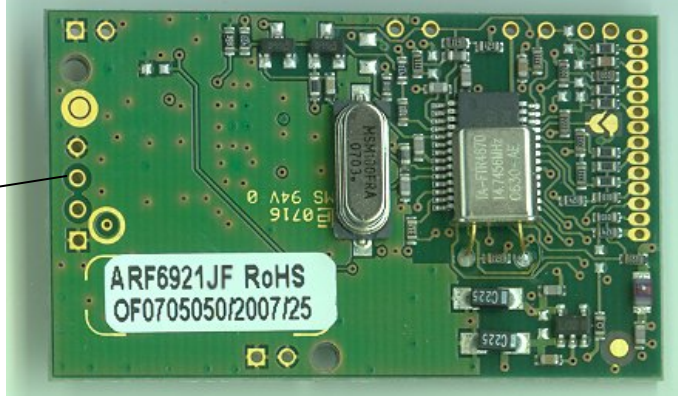


Top side without cover shield



Bottom side

Antenna connexion  
thru IRDA  
daughter  
board





INTERNAL PHOTOS

Written by : JL JAMET & O. ROY

June 17, 2008

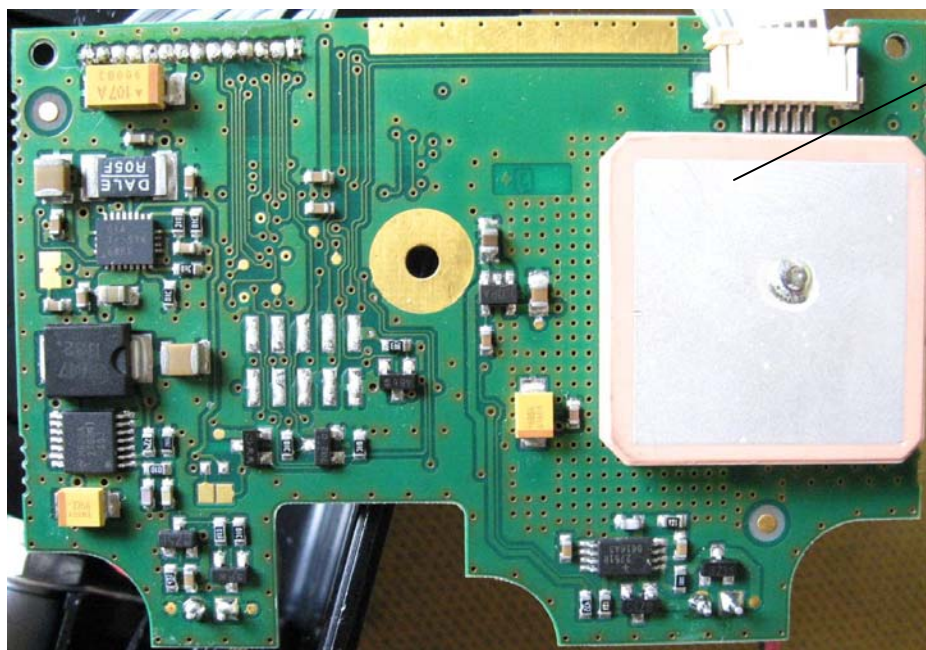
Test report # : 027115-CC-1-a

MAIN BOARD

GPS receiver  
component



GPS receiver  
Antenna







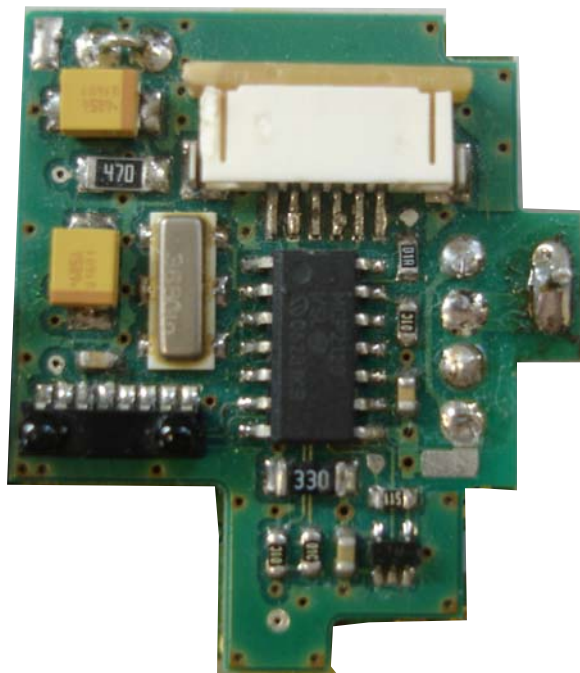
**INTERNAL PHOTOS**

Written by : JL JAMET & O. ROY

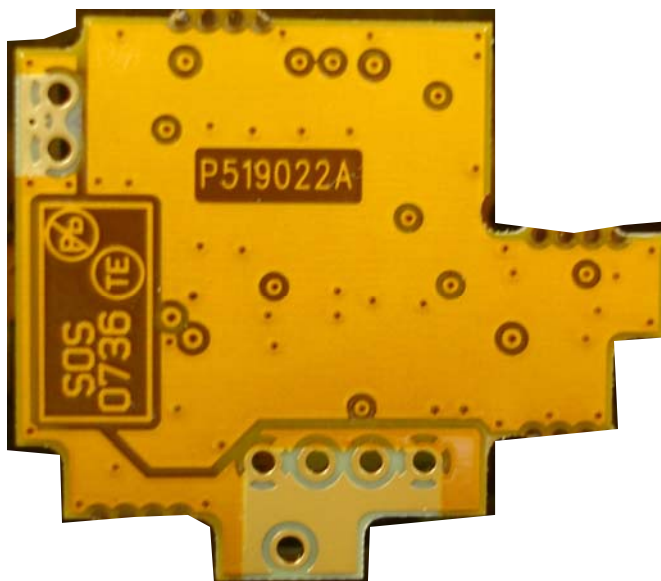
June 17, 2008

Test report # : 027115-CC-1-a

IR board top side



Bottom side





INTERNAL PHOTOS

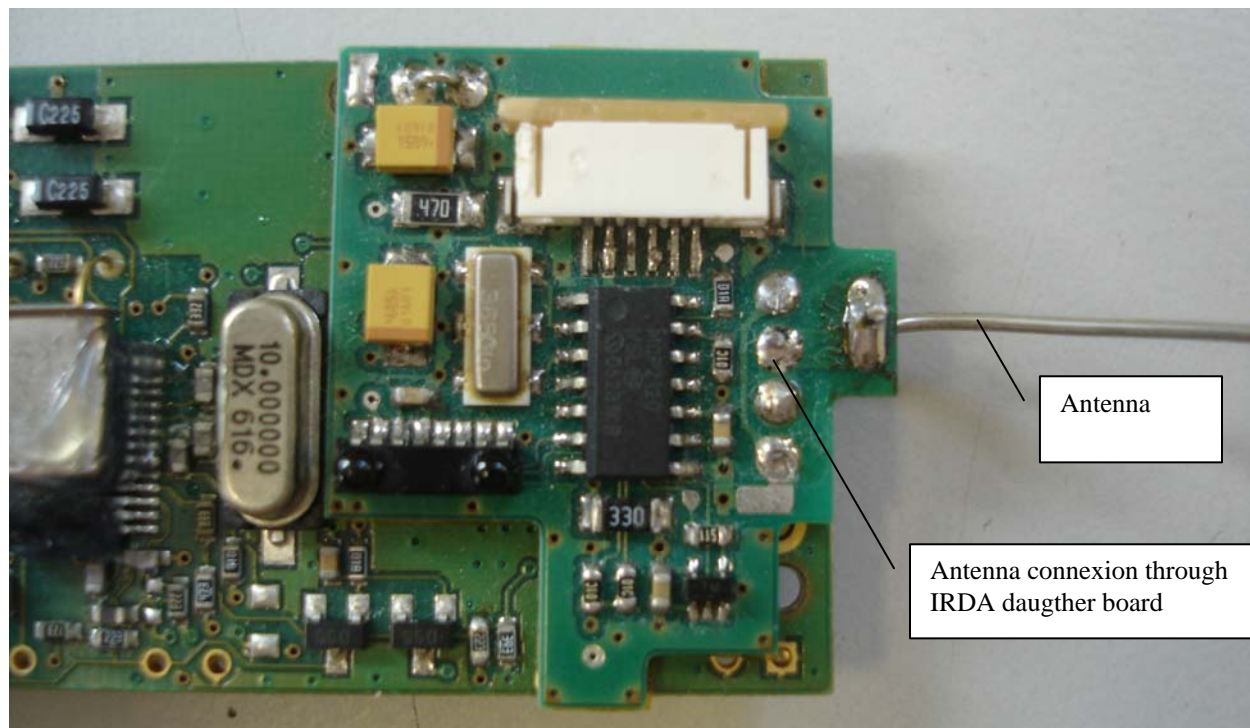
Written by : JL JAMET & O. ROY

June 17, 2008

Test report # : 027115-CC-1-a

Mounting

IR Board top side on RF Module with wire antenna (7.5 cm)



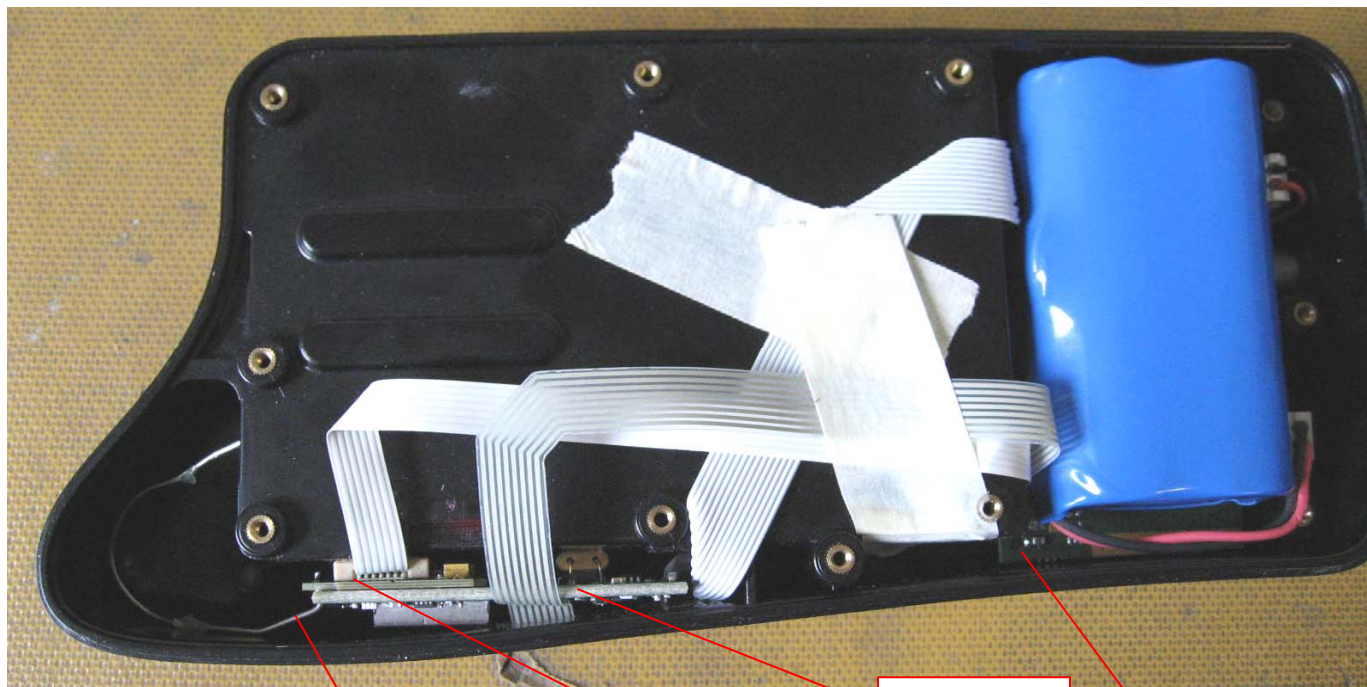


INTERNAL PHOTOS

Written by : JL JAMET & O. ROY

June 17, 2008

Test report # : 027115-CC-1-a



Antenna

IR board

RF board

Main board

