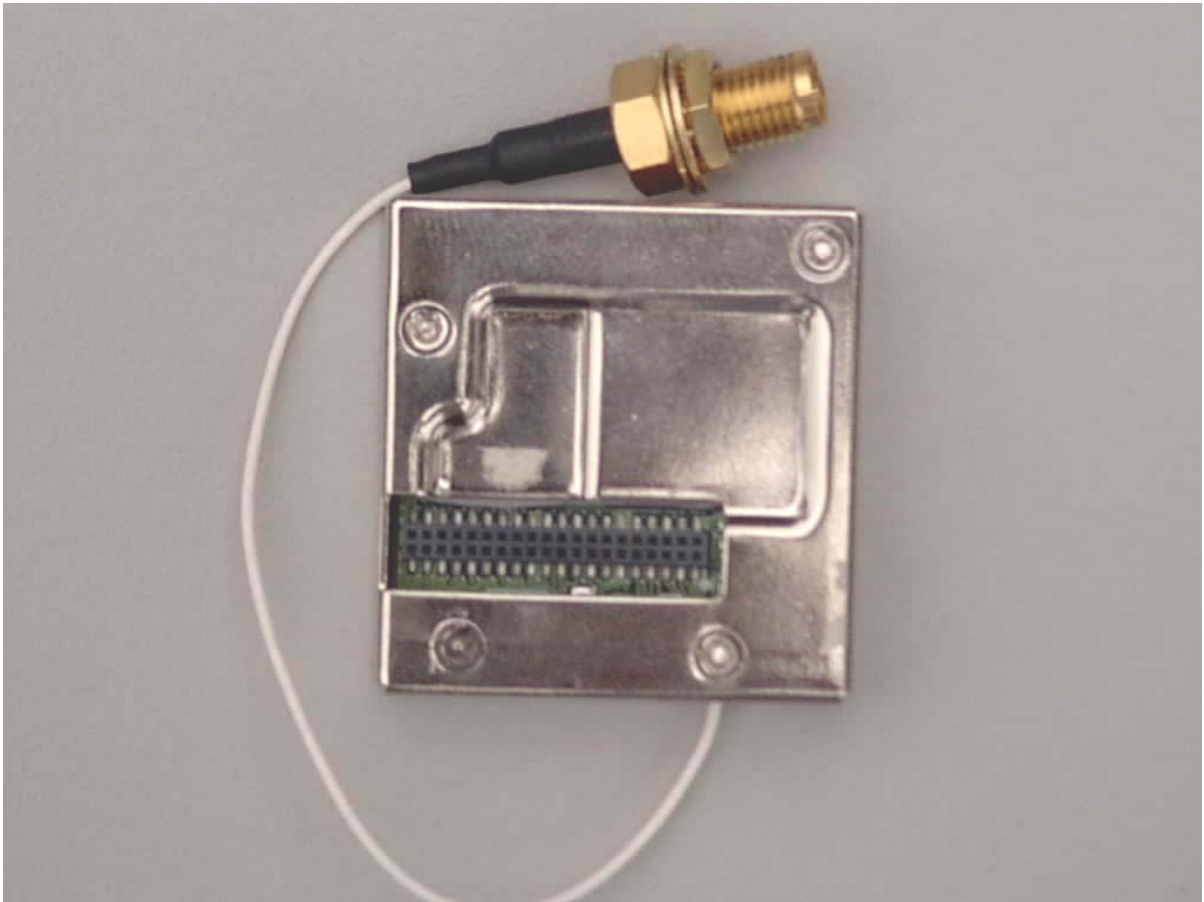


Canberra Radio Data Transmitter with FCC ID: VPM-CSP-WF uses a certified WiFi module with FCC ID: R68WIPORTG.

But the [Wifi module installed on Canberra product uses a different integral PCB antenna. This is the only difference](#) between the certified wifi module and the module used on Canberra daughter board.



Top View
“Transmitter Close-up with
Top Shield Removed”



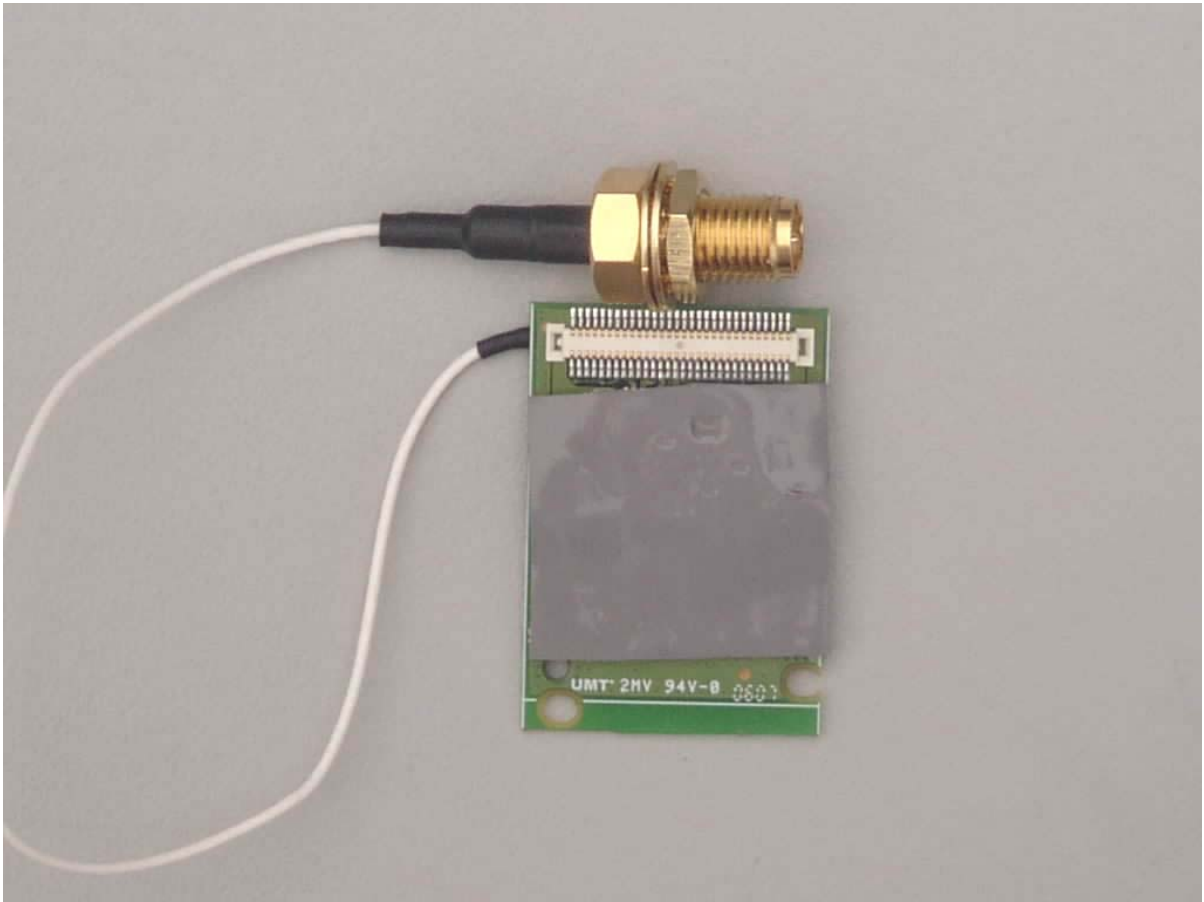
***Bottom View
“Transmitter Close-up”***



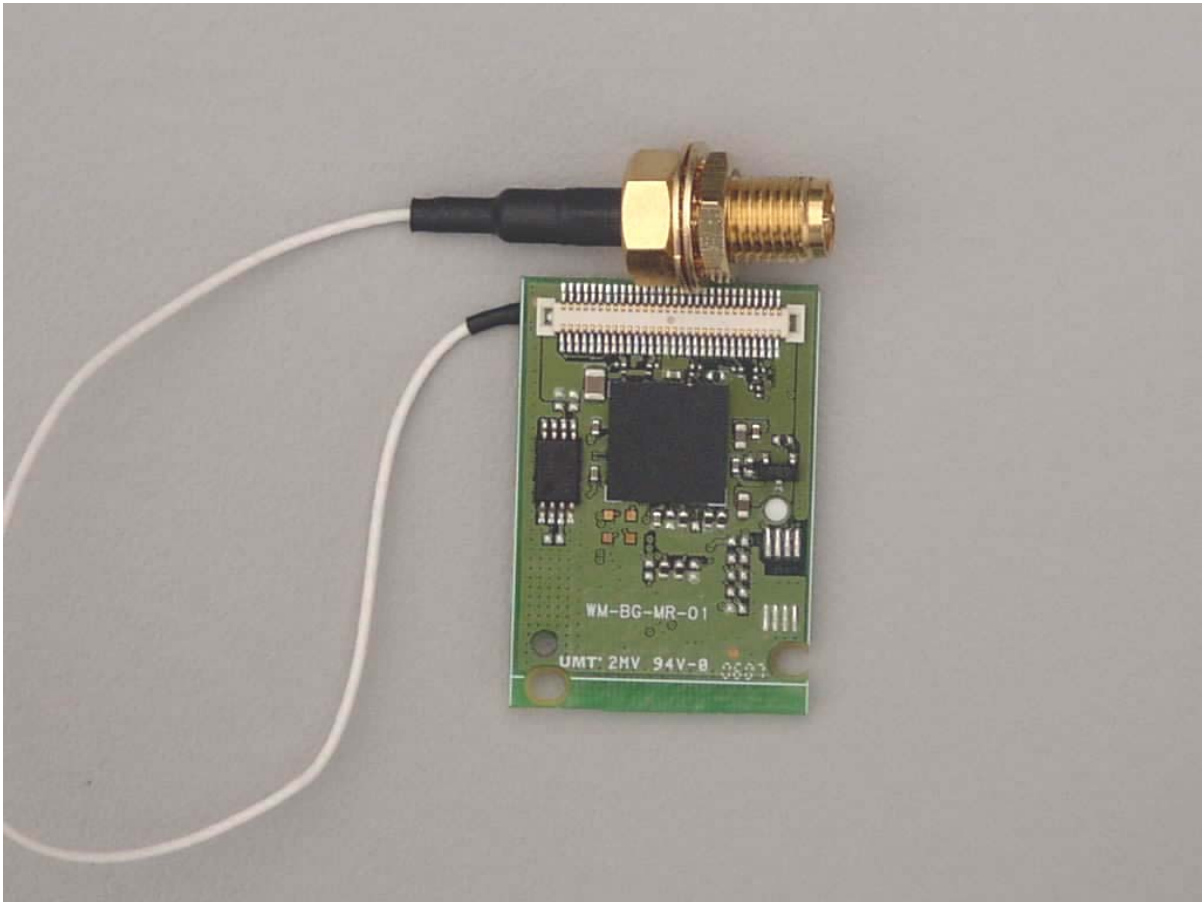
***Top View
“Transmitter Board”***



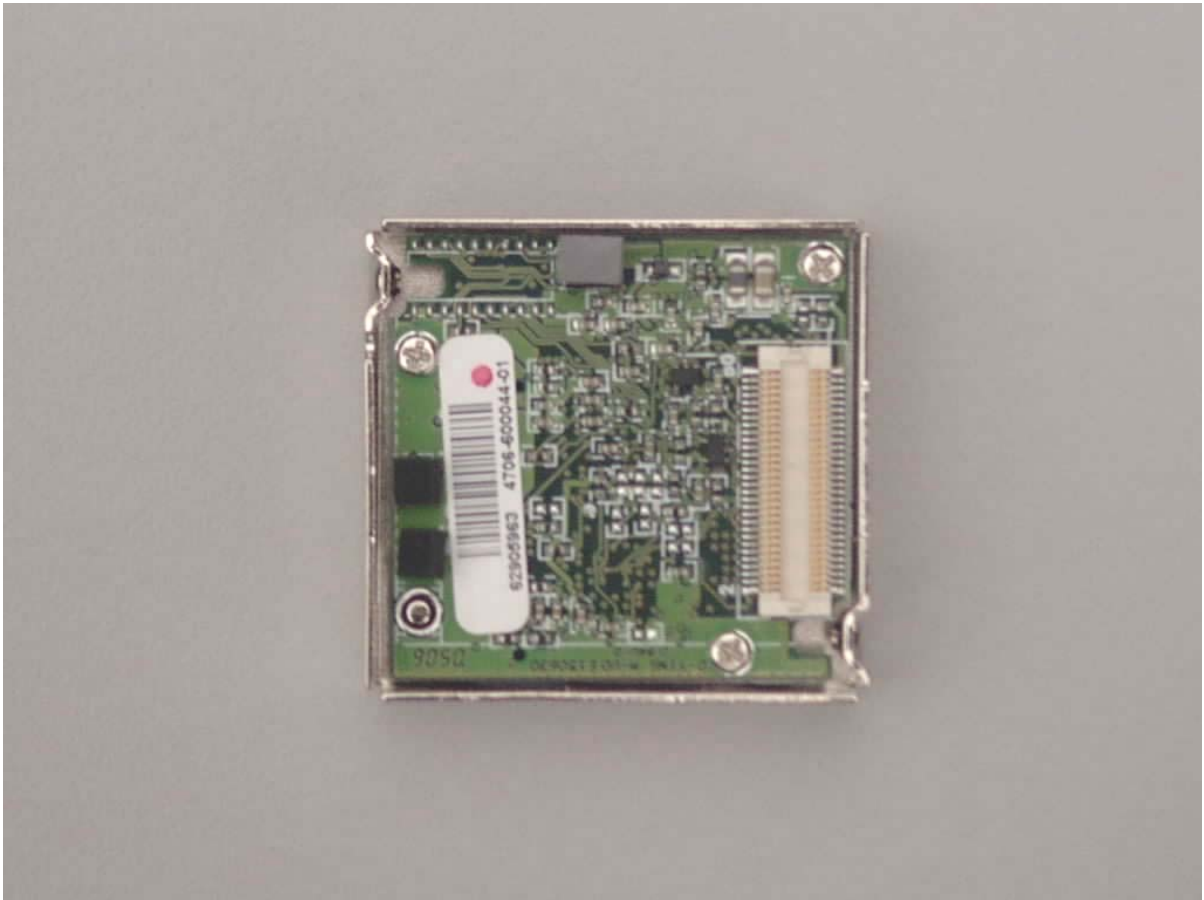
Top View
“Transmitter Board, Shield Removed”



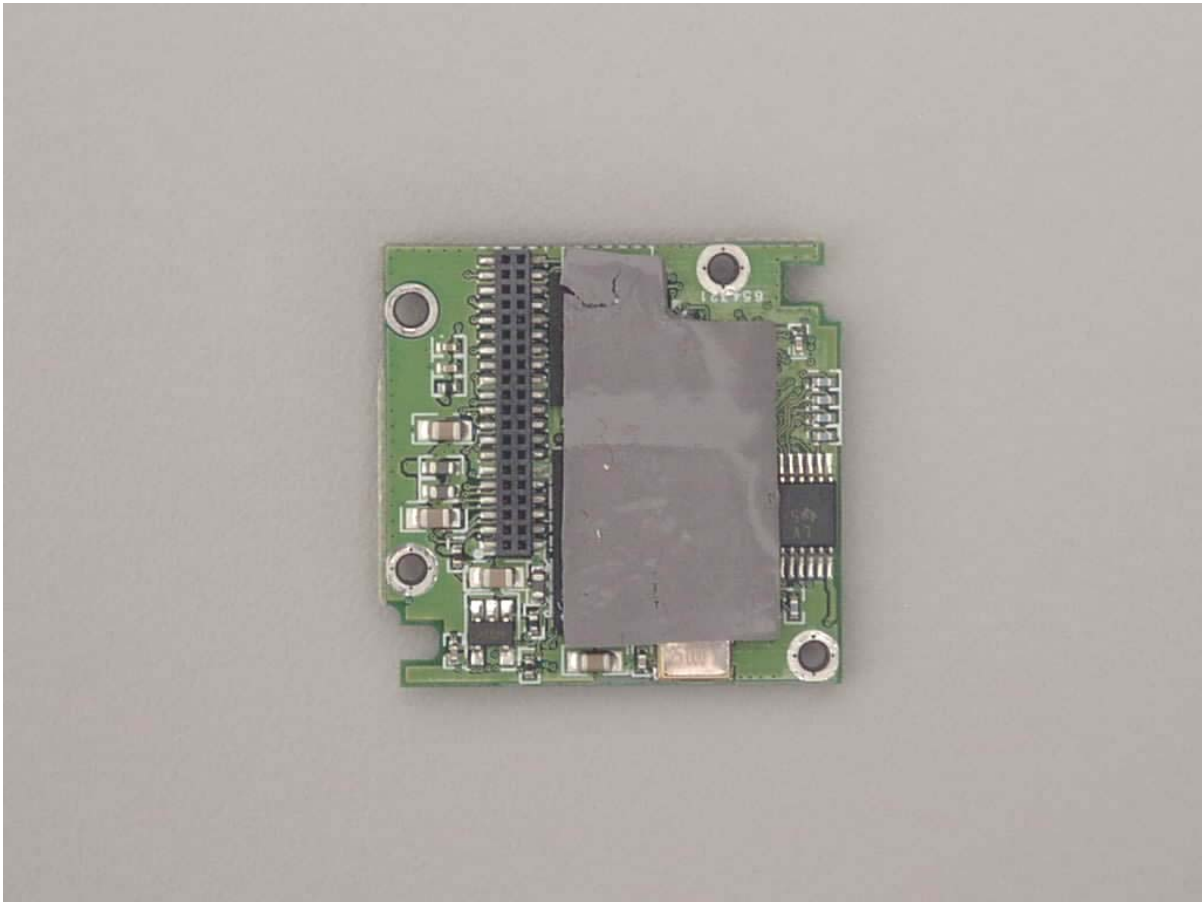
***Bottom View
“Transmitter Board
With Insulation”***



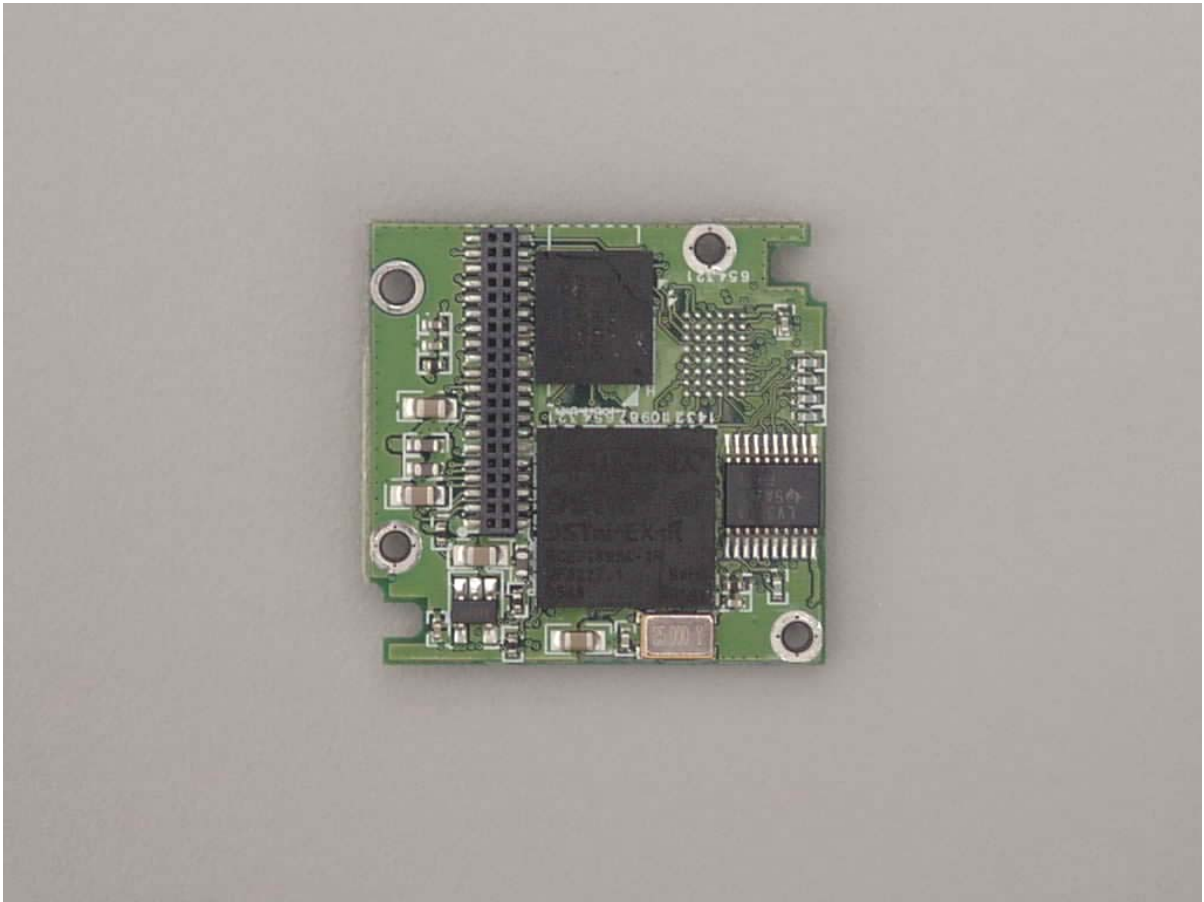
***Bottom View
“Transmitter Board
Without Insulation”***



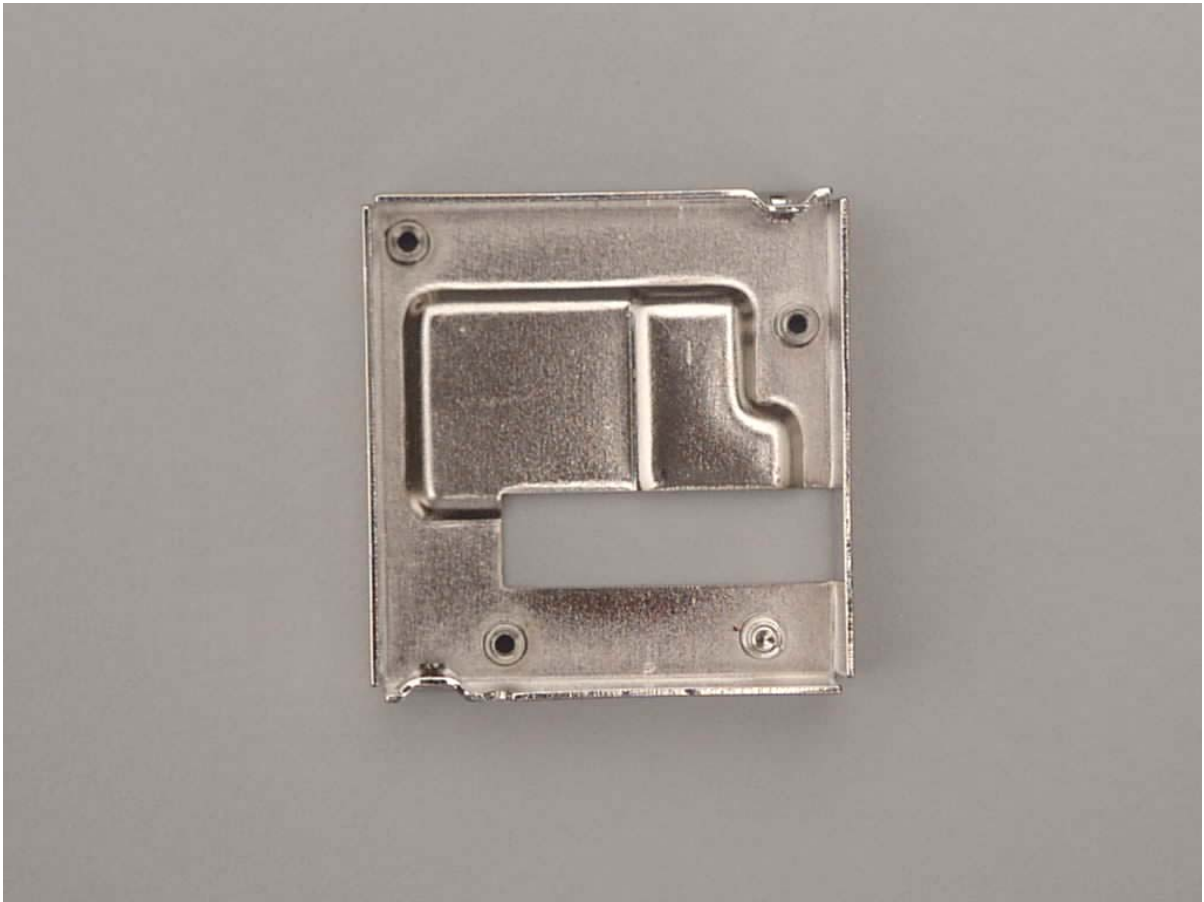
Top View
“Transmitter Daughter Board”



***Bottom View
“Transmitter Daughter Board
With Insulation”***



***Bottom View
“Transmitter Daughter Board
Without Insulation”***



Top View
“Lower Shield”



Bottom View
“Upper Shield”