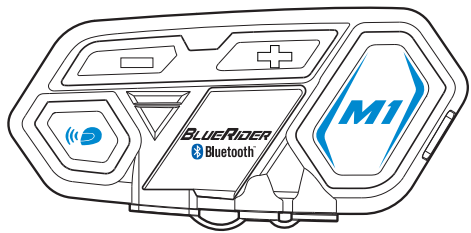
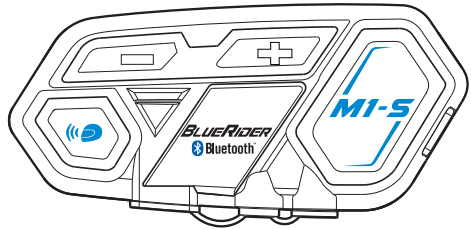




BLUERIDER

# M1-S, M1



## Operation Manual



### Attention

Thank you for purchasing Dimton M1-S, M1 bluetooth stereo headsets. For best experiences, please read manual before use.

#### Sound volume warning

Long period or too loud may hurt hearing ability

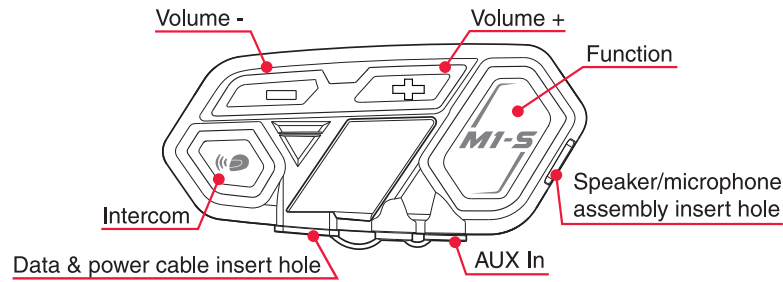
#### Disassemble or modification

The M1-S is precisely made in the factory. Any disassemble or modification may damage the device. Please do not tear any of the safety regulation and serial number sticker from the device, that will void warranty. Please contact us at [service@dimton.com](mailto:service@dimton.com) if needed.

#### Warranty :

In normal use, we offer one year warranty from the date of purchase. Any disassemble, modification, will void warranty

### 1. Outlook (e.g. M1-S)



Functions	Device Pair Up
<b>Switch On</b> : When device is off, press intercome + function at same time for 3 seconds. <b>Switch Off</b> : When device is on, press intercom + function at same time for 3 seconds. <b>Power Detect</b> : When device is on, short press volume - and volume + at same time. <b>Voice control function (Only if your cellphone is equipped)</b> : Short press function button once. <b>Switch on external wired devices such as speed detector...</b> : when device is on, long press volume - and volume + at same time for 3 seconds.	<b>Pairing mode</b> : When device is on, long press function for 5 seconds. <b>Search mode</b> : When device is on, long press intercom for 5 seconds. Remark, pairing mode is for pairing up to other devices like cellphone, gps,... Search mode is for pairing up with other M1-S.
<b>Cellphone Function</b> <b>Answering call</b> : Short press function once. <b>Hangup call</b> : After call, short press function once <b>Refuse call</b> : Long press function button for 2 seconds <b>Redial</b> : Short press function button twice <b>Volume up</b> : Press volume + while talking <b>Volume down</b> : Press volum - while talking	<b>Music Function</b> <b>Play</b> : When device is on, short press volume + twice. <b>Pause</b> : When music playing, short press volume + twice. <b>Volume up</b> : When playing music, short press volume + once. <b>Volume down</b> : When playing music, short press volume - once. <b>Play previous</b> : When playing music, long press volume + for 2 seconds. <b>Play next</b> : When playing music, long press volume - for 2 seconds.
	<b>Intercom Function</b> <b>Switch intercom on</b> : when device on : short press intercom once <b>Switch of</b> : when talking, short press intercom once <b>Volume up</b> : when talking, short press volume + once <b>Volume down</b> : when talking , short press volume - once
	<b>Special Function</b> <b>Update mode</b> : Plug in the Data & power cable, press volume - and function at same time for 5 seconds. <b>Memory clear</b> : When device is on, press volume + and function at same time for 5 seconds.

### 2. Recharge

#### Recharge



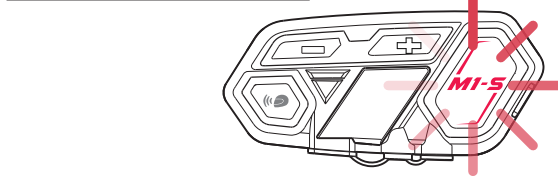
For first time use, please recharge the device until red light is off.  
1. Use data and power cable plug to the socket, connect to power source.  
\*Bike usb chargers are not recommended, unstablized circuit may damage the device.

2. When connecting to power source, red light appears in function button.  
When recharge complete, red light is off. Complete recharge is about 2 hours.

#### Low power notification

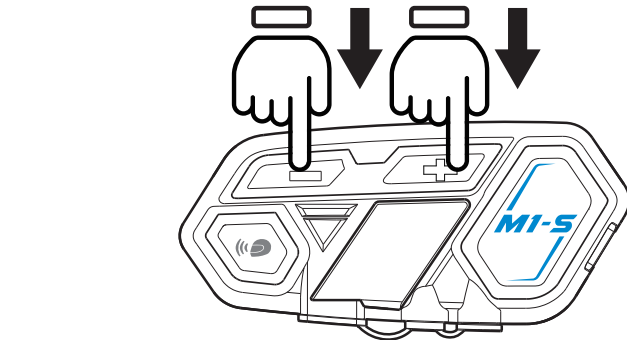
When power lower than 10%, red light flash in the function button and voice message will remind power lower than 10%, please recharge immediately.

#### Low Power Notification



When power lower than 10%, Red light flash in the function button and voice message will remind power lower than 10%, please recharge immediately.

#### Power Detect Function



M1-S has power detection function, when device is on, short press volume - and volume + at same time. Recorded voice message will tell you

Power over 90%

Power over 50%

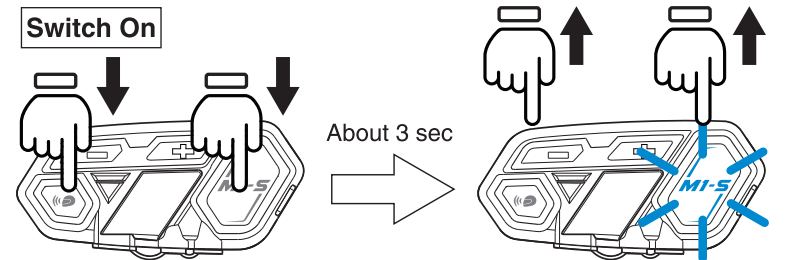
Power lower 50%

Power lower than 10% please recharge immediately

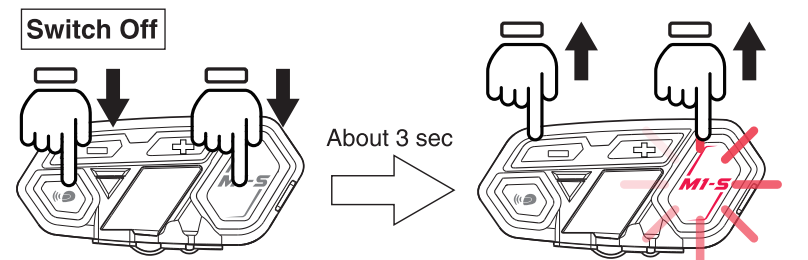
Voice control function( only if your cellphone is equipped) : short press function button once

Switch on external wired devices such as speed detector... : when device is on, long press volume - and volume + at same time for 3 seconds.

### 3. On / Off



1. Switch on : long press function + intercom at same time for 3 seconds, until blue light flash in function button. Voice message says welcome to the bluerider bluetooth communication system.



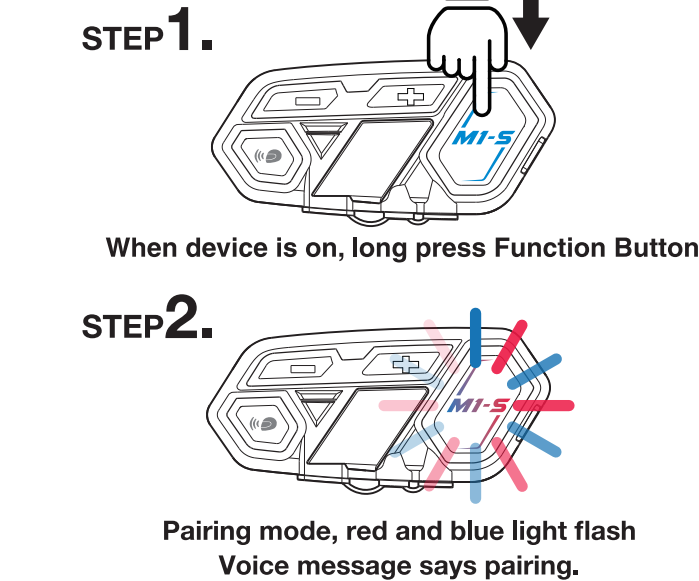
2. Switch off : When the device is on, long press function and intercom button at same time for 3 seconds, until red light flash in function button. The device will detect power and voice message will say

1. Power over 50%
2. Power lower 50%
3. Power lower than 10%, please recharge immediately

### 4. Pair Up To Different Devices

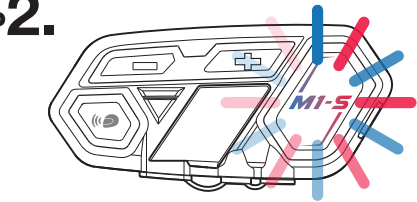
M1-S or M1 can pair to different bluetooth devices.

#### Pairing Mode



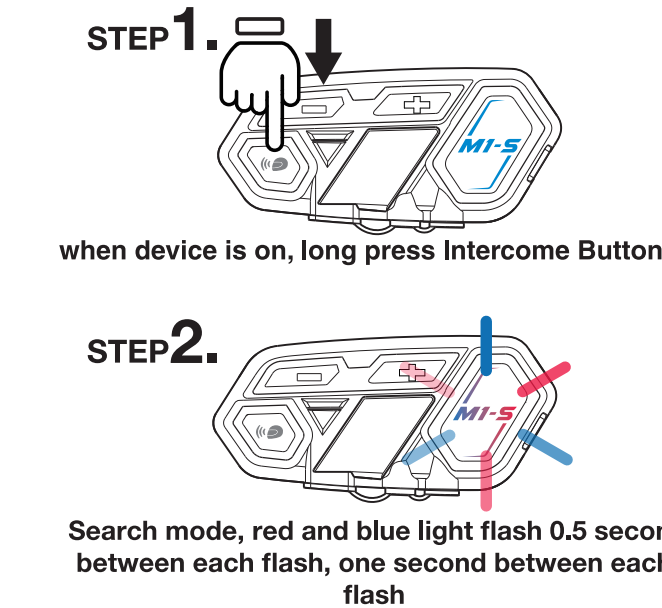
When device is on, long press Function Button

#### STEP 2.



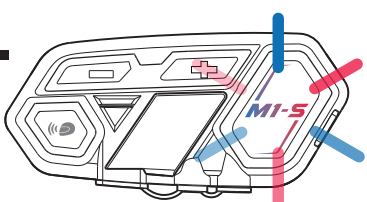
Pairing mode, red and blue light flash  
Voice message says pairing.

#### Search Mode



when device is on, long press Intercome Button

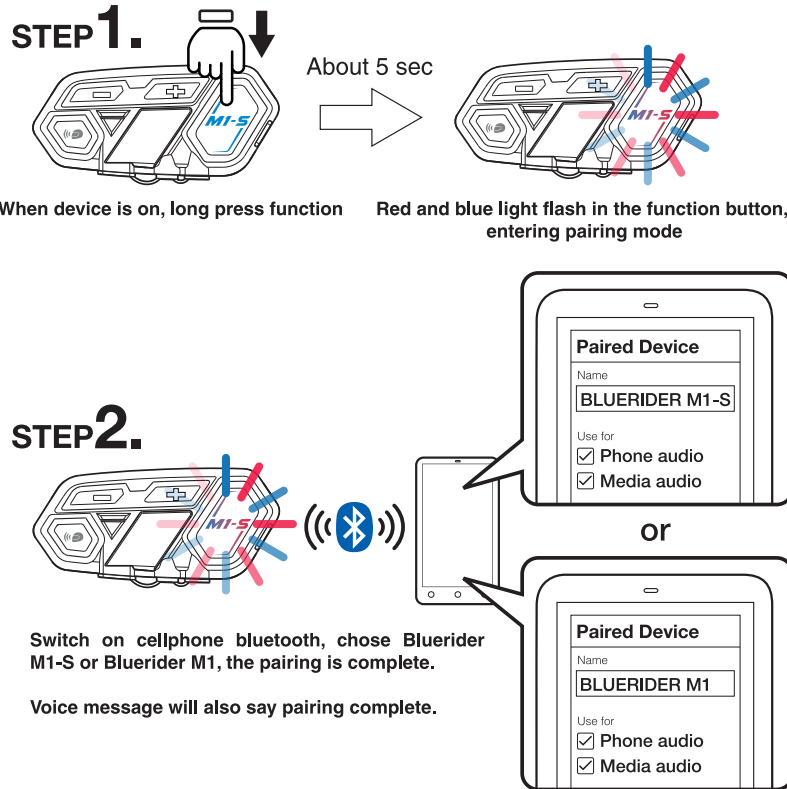
#### STEP 2.



Search mode, red and blue light flash 0.5 second between each flash, one second between each flash

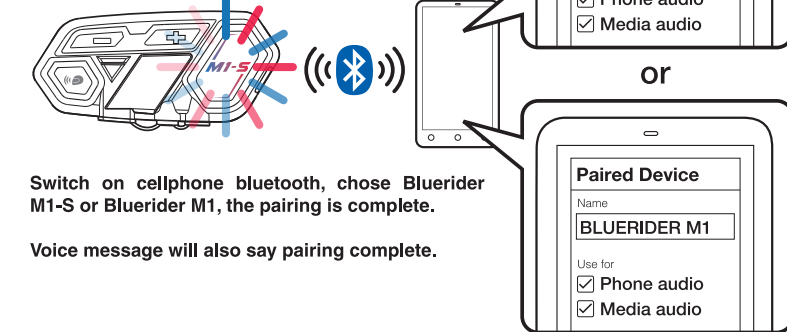
It's search mode, voice message shows "Beep" sound.

### 5. Pairing With Cellphone



STEP 1. When device is on, long press function About 5 sec Red and blue light flash in the function button, entering pairing mode

#### STEP 2.

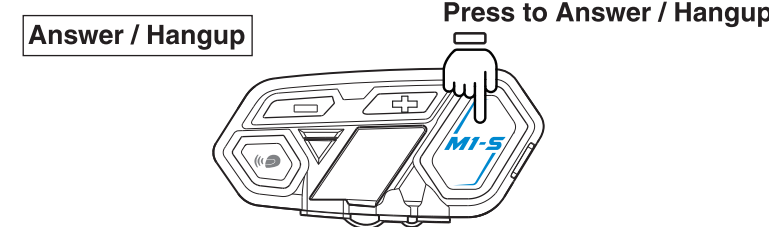


Switch on cellphone bluetooth, chose Bluerider M1-S or Bluerider M1, the pairing is complete.

Voice message will also say pairing complete.

Remark, when pairing complete, please check both cellphone audio and media audio are all chosen, otherwise call or music can't be processed.

### 6. Telephone Function



Press to Answer / Hangup

M1-S M1 is set to manually answer incoming calls, when incoming calls, beside rings, blue light flashes. Push FUNCTION BUTTON to answer and push function button to hang up.

When talking, press VOLUME + and VOLUME - to adjust volume

#### Redial

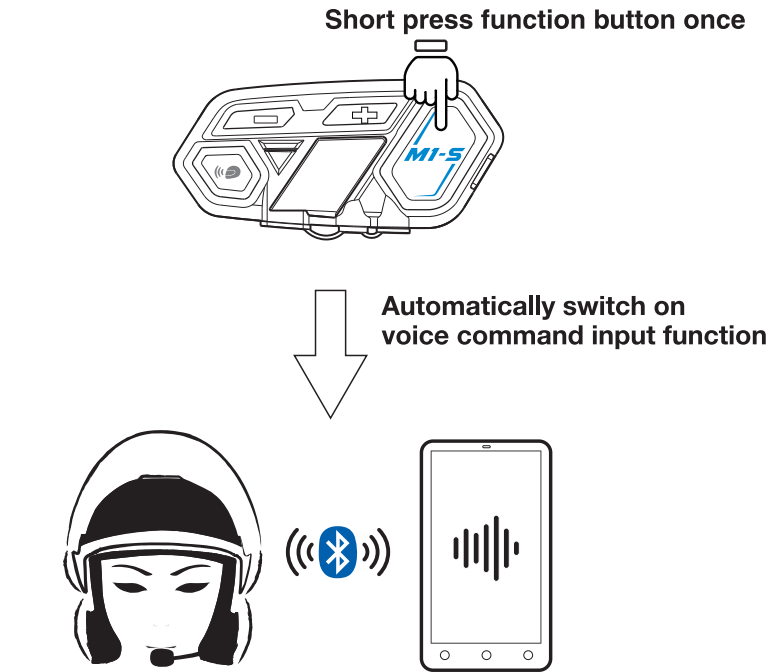


Short press function button twice

When the device is on, short press function button twice, will redial, blue light flashes  
\*Only redial last call out number



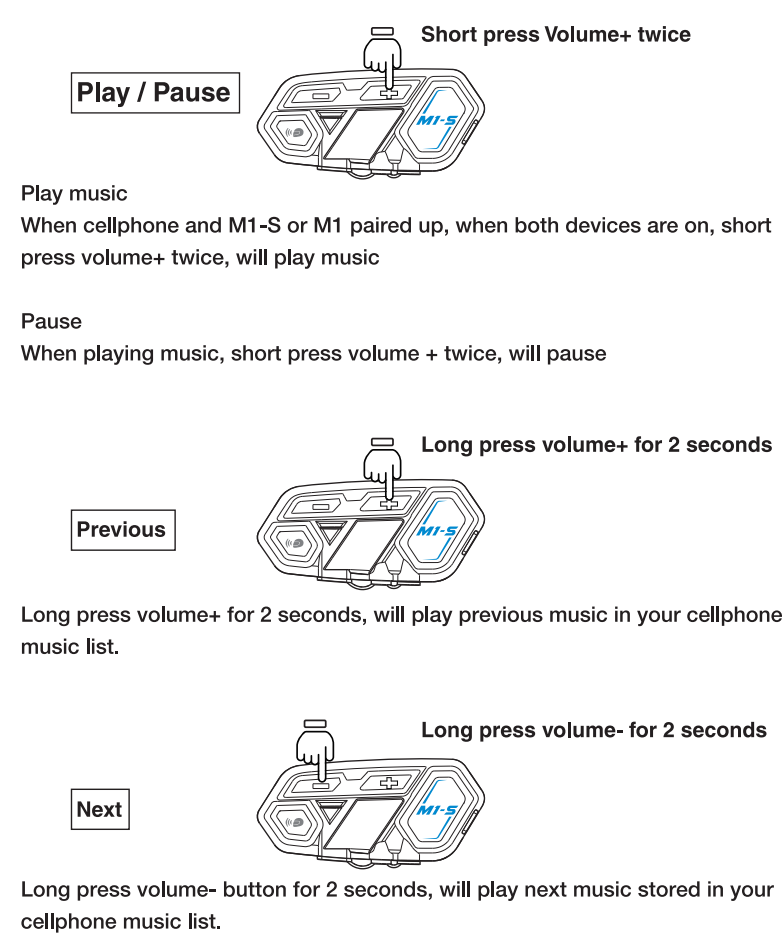
## 7. Voice Command



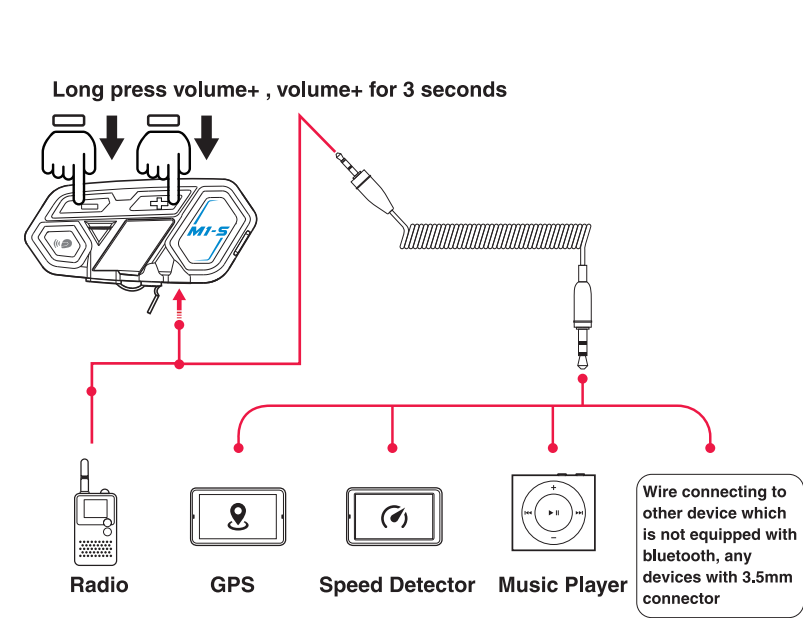
When your M1-S or M1 is paired up with your cellphone, when both device are on, short press function button once, will automatically switch on the voice command function

\*Cellphone must be equipped with this function

## 8. Music Selections Functions



## 9. Wire Connecting

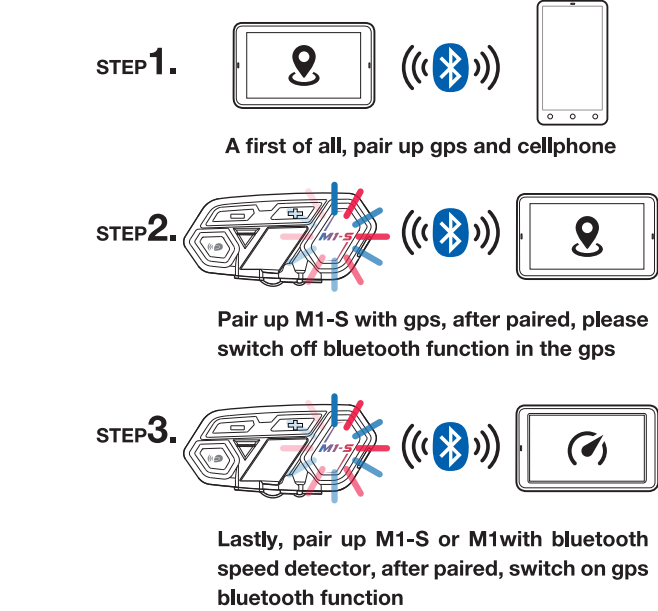


M1-S or M1 equipped with wire connection function in order to connect to devices without bluetooth. As long as the device is connected by 3.5mm aux out, all can transmit voice signal to M1-S or M1

When device wire connected by 2.5mm to 3.5mm cable to M1-S or M1, long press volume+ and volume- for 3 seconds to switch on the connection

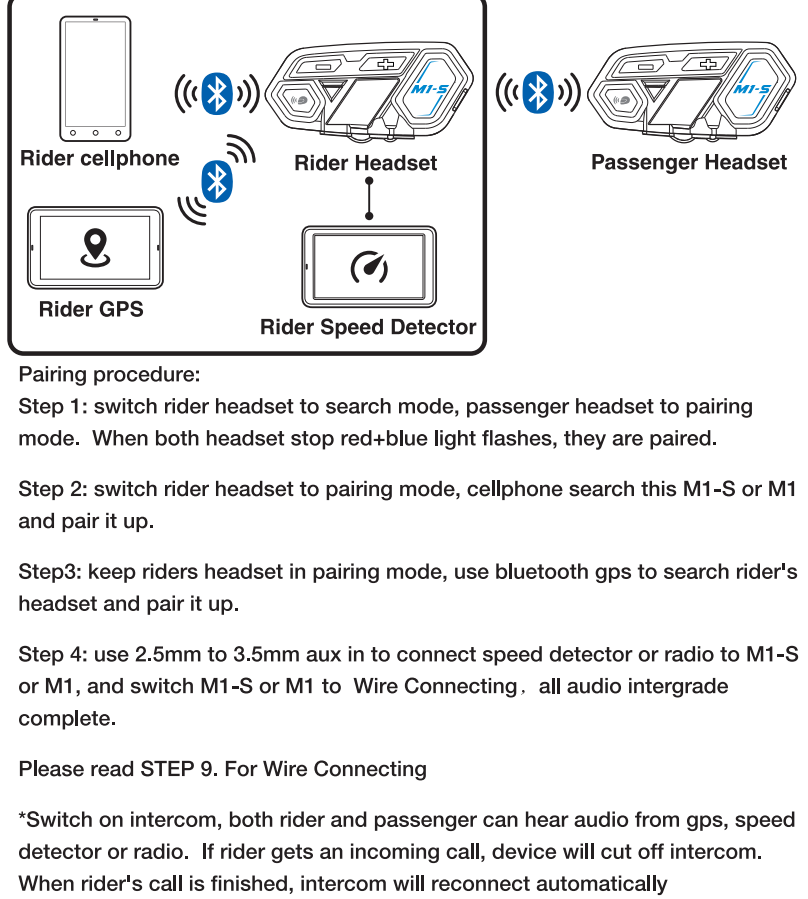
\* when wired mode is switched on, it will keep it on until switch off the M1-S or M1.

## 10. Operating Scenario 1: One person use, pair to cellphone + bluetooth gps device + bluetooth speed detector

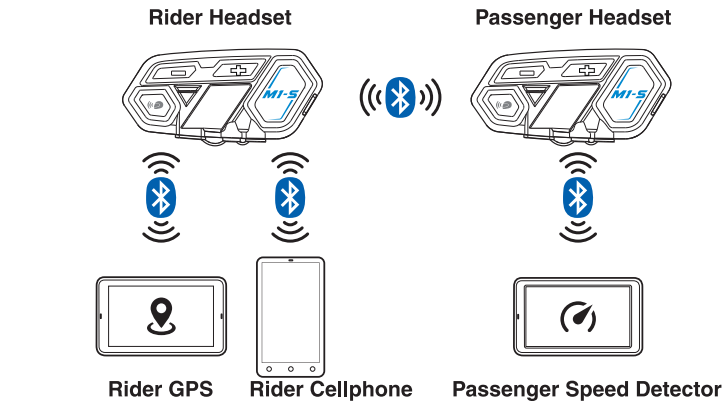


\*After M1-S or M1 paired with gps, if don't switch off gps's bluetooth, its will interference the pairing when pairing to speed detector. Recommended to switch gps bluetooth off, after pair up to detector, switch the bluetooth back on

## 10. Operating scenario 2: Two person intercom, and pairing to cellphone + bluetooth gps + speed detector or radio



## 10. Operating Scenario 3: Two man intercom, rider using cellphone + bluetooth gps, passenger using bluetooth speed detector



Pairing Procedure

Step 1, switch rider headset to search mode, passenger's headset switch to pairing mode, when red and blue light stop flash, intercom pairing complete. At same time instantly switch on intercom.

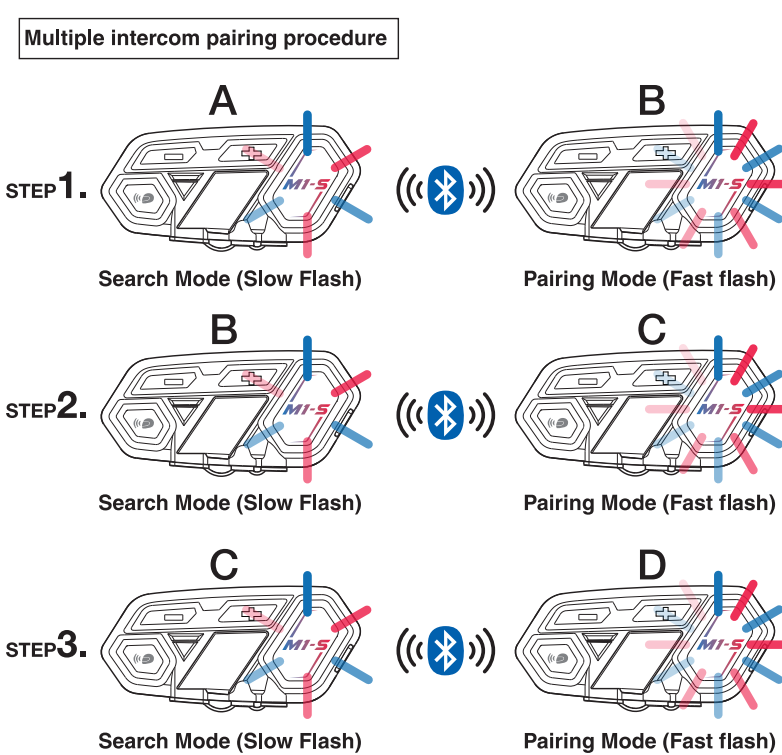
Step 2. Set rider headset to pairing mode, use cellphone to search rider's headset to complete pair up

Step3: set rider's headset to pairing mode, use bluetooth gps to search rider's headset and complete

Step 4: set passenger's headset to pairing mode, use bluetooth speed detector to search passenger headset and complete pair up

\*When both headsets are switched off and a want to reconnect is needed, please press rider's intercom button to reconnect and will be able to share all audio source again

## 11. Multiple Intercom



\*Numbers of device which the headset can be paired

4 x M1-S or M1( A, B, C D), multiple intercom connections, the connection will occupy channels, thus only unit A can connect to the other two bluetooth devices, the others B, C, D can only connect to one bluetooth device

M1-S or M1 equipped multiple intercom function, recommended 4 units, pairing procedure as follow

Step 1: switch on both A and B unit, long press A unit intercom button to search mode, long press unit B function button to pairing mode. When blue light off, pairing complete

Now A and B unit pairing complete.

Step 2, long press unit b intercom button to search mode, long press unit C function button to pairing mode. When blue light off, pairing complete

Three unit pairing complete.

Step 3:

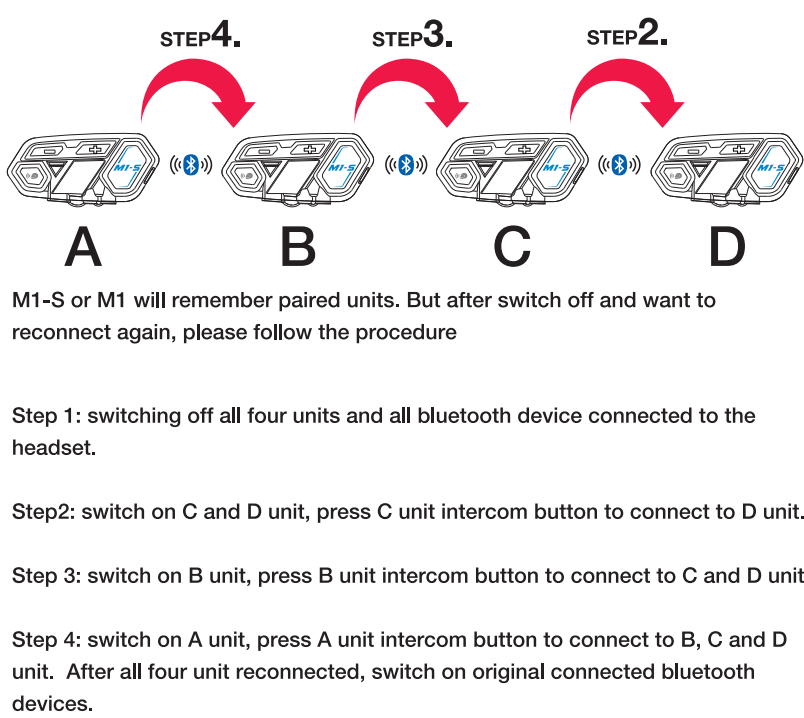
Long press unit C intercom button, long press unit D function button, when blue light off, pairing complete.

Four units pairing complete.

\*Interruption

In multiple intercom mode, if there is an incoming call caused one of unit away from the connection. After call, will reconnected automatically. If interruption is caused by distance or bad signal. Please press intercom button to reconnect.

## Multiple intercom reconnect procedure



## 12. Q&A

- Q1 : No sounds from one or two side speaker
- A1 : Check device plug, needs to firmly connected.
- Q2 : Can it be recharged from bike USB charger while riding?
- A21 : Not recommended, unstablized power source will cause damage on internal circuit, may cause unable to recharge/can't fully charged/can't switch on.
- A22 : Power bank is a good choice.
- Q3 : when using radio, not transmission or continuous transmission
- A3 : Check 2.5mm pin, has to insert firmly. The pin equipped oring to isolate water, user might think it already plugged.
- Q4 : New device can't switch on
- A4 : Recharged at least 30mins before use

## FCC Statement

This equipment has been tested and found to comply with the limits for a Class B digital device, pursuant to part 15 of the FCC rules. These limits are designed to provide reasonable protection against harmful interference in a residential installation.

This equipment generates, uses and can radiate radio frequency energy and, if not installed and used in accordance with the instructions, may cause harmful interference

to radio communications. However, there is no guarantee that interference will not occur in a particular installation. If this equipment does cause harmful interference to

radio or television reception, which can be determined by turning the equipment off and on, the user is encouraged to try to correct the interference by one or more of the

following measures:

- Reorient or relocate the receiving antenna.

- Increase the separation between the equipment and receiver.

- Connect the equipment into an outlet on a circuit different from that to which the receiver is connected.

- Consult the dealer or an experienced radio/TV technician for help.

To assure continued compliance, any changes or modifications not expressly approved by the party.

Responsible for compliance could void the user's authority to operate this equipment. (Example- use only shielded interface cables when connecting to computer or peripheral devices).

This equipment complies with Part 15 of the FCC Rules. Operation is subject to the following two conditions:

- (1) This device may not cause harmful interference, and

- (2) This device must accept any interference received, including interference that may cause undesired operation.

The SAR limit adopted by USA and Canada is 1.6 watts/kilogram (W/kg) averaged over one gram of tissue. The highest SAR value reported to the Federal Communications Commission (FCC) and the Industry Canada (IC) for this device type when it is properly worn on the body is 0.030 W/kg.

The device complies with the RF specifications when the device is used near your ear or at a distance of 0 mm from your body. Ensure that the device accessories

such as a device case and a device holster are not composed of metal components. Keep your device 0 mm away from your body to meet the requirement earlier mentioned.

This device was tested for typical body-worn operations. To comply with RF exposure requirements, a minimum separation distance of 0 mm must be maintained between the user's body and the handset, including the antenna. Third-party belt-clips, holsters, and similar accessories used by this device should not contain any metallic components. Body-worn accessories that do not meet these requirements may not comply with RF exposure requirements and should be avoided. Use only the supplied or an approved antenna.