

SAR EVALUATION REPORT



For

NVIDIA Corporation

2701 San Tomas Expressway,

Santa Clara, CA 95050, USA

FCC ID: VOB-P1001A
IC: 7361A-P1001A

Report Type: Original Report	Product Type: 2G/3G WWAN PCI-E Module for Tablet PC Model E1290
Test Engineer: Arthur Tie	
Report Number: R1111165-WWAN SAR	
Report Date: 2011-12-29	
Reviewed By: Victor Zhang EMC/RF Lead	
Prepared By: Bay Area Compliance Laboratories Corp. (SP) 1274 Anvilwood Avenue, Sunnyvale, CA 94089, USA Tel: (408) 732-9162 Fax: (408) 732 9164	

Note: This test report is prepared for the customer shown above and for the device described herein. It may not be duplicated or used in part without prior written consent from Bay Area Compliance Laboratories Corp. This report **must not** be used by the customer to claim product certification, approval, or endorsement by NVLAP*, NIST, or any agency of the Federal Government.
* This report may contain data that are not covered by the NVLAP accreditation and are marked with an asterisk "*" sec.2

Summary of Test Results		
Rule Part(s):	FCC §2.1093 IC RSS-102, Issue 4	
Test Procedure(s):	FCC Bulletin 65OET -C; IEEE 1528-2003 RSS-102, Issue 4	
Device Category: Exposure Category:	Portable Device General Population/Uncontrolled Exposure	
Device Type:	2G/3G WWAN PCI-E Module for Tablet PC Model E1290	
Modulation Type:	GMSK/QPSK/WCDMA	
TX Frequency Range:	824.2-848.8 MHz	GPRS/EDGE 850
	826.4-846.6 MHz	WCDMA 850
	1850.2-1909.8 MHz	GPRS/EDGE 1900
	1852.4-1907.6 MHz	WCDMA 1900
Maximum Conducted Power Tested:	32.67 dBm	GPRS 850
	22.57 dBm	WCDMA 850
	29.68 dBm	GPRS 1900
	22.45 dBm	WCDMA 1900
Antenna Type(s) Tested:	Internal Antenna	
Body-Worn Accessories:	None	
Face-Head Accessories:	None	
Max. SAR Level (s) Measured:	0.218 W/Kg ,Body 1g Tissue	GPRS 850
	0.176 W/Kg ,Body 1g Tissue	WCDMA 850
	0.511 W/Kg, Body 1g Tissue	GPRS 1900
	1.03 W/Kg, Body 1g Tissue	WCDMA 1900

TABLE OF CONTENTS

1	GENERAL DESCRIPTION	5
1.1	PRODUCT DESCRIPTION FOR EQUIPMENT UNDER TEST (EUT)	5
1.2	EUT TECHNICAL SPECIFICATION	5
2	TEST FACILITY	6
3	REFERENCE, STANDARDS AND GUIDELINES	7
3.1	SAR LIMITS	8
4	DESCRIPTION OF TEST SYSTEM	9
4.1	IEEE SCC-34/SC-2 P1528 RECOMMENDED TISSUE DIELECTRIC PARAMETERS	10
4.2	MEASUREMENT SYSTEM DIAGRAM	11
4.3	SYSTEM COMPONENTS.....	12
4.4	DASY4 MEASUREMENT SERVER.....	12
4.5	DATA ACQUISITION ELECTRONICS	13
4.6	PROBES	13
4.7	ET3DV6 PROBE SPECIFICATION.....	13
4.8	E-FIELD PROBE CALIBRATION PROCESS	14
4.9	DATA EVALUATION	14
4.10	LIGHT BEAM UNIT	16
4.11	MEDIUM.....	16
4.12	SAM TWIN PHANTOM	17
4.13	DEVICE HOLDER FOR SAM TWIN PHANTOM	17
4.14	SYSTEM VALIDATION KITS	18
4.15	ROBOT	19
5	EQUIPMENT LIST AND CALIBRATION	20
5.1	EQUIPMENTS LIST & CALIBRATION INFO.....	20
6	SAR MEASUREMENT SYSTEM VERIFICATION	21
6.1	SYSTEM ACCURACY VERIFICATION	21
6.2	SYSTEM SETUP BLOCK DIAGRAM.....	21
6.3	LIQUID AND SYSTEM VALIDATION.....	21
7	EUT TEST STRATEGY AND METHODOLOGY	22
7.1	TEST POSITIONS FOR DEVICE OPERATING NEXT TO A PERSON’S EAR.....	22
7.2	CHEEK/TOUCH POSITION	23
7.3	EAR/TILT POSITION.....	23
7.4	TEST POSITIONS FOR BODY-WORN AND OTHER CONFIGURATIONS	24
7.5	SAR EVALUATION PROCEDURE.....	25
8	DASY4 SAR EVALUATION PROCEDURE	26
8.1	POWER REFERENCE MEASUREMENT	26
8.2	AREA SCAN.....	26
8.3	ZOOM SCAN.....	27
8.4	POWER DRIFT MEASUREMENT	27
8.5	Z-SCAN.....	27
9	FCC 3G MEASUREMENT PROCEDURES	28
	PROCEDURES USED TO ESTABLISH RF SIGNAL FOR SAR	28
	SAR MEASUREMENT CONDITIONS FOR HSDPA DATA DEVICES.....	28
10	CONDUCTED OUTPUT POWER MEASUREMENT	30

10.1 TEST RESULTS30

11 SAR MEASUREMENT RESULTS31

11.1 TEST ENVIRONMENTAL CONDITIONS31

12 APPENDIX A – MEASUREMENT UNCERTAINTY.....34

13 APPENDIX B – PROBE CALIBRATION CERTIFICATES35

14 APPENDIX C – DIPOLE CALIBRATION CERTIFICATES46

15 APPENDIX D - TEST SYSTEM VERIFICATIONS SCANS64

16 APPENDIX E – EUT SCAN RESULTS66

17 APPENDIX G – TEST SETUP PHOTOS80

17.1 BACK-TOUCH SETUP PHOTO.....80

17.2 BOTTOM-TOUCH SETUP PHOTO80

17.3 LEFT-TOUCH SETUP PHOTO81

18 APPENDIX H – EUT PHOTOS.....82

18.1 WWAN MODULE VIEW (FRONT SIDE WITH SHIELD)82

18.2 WWAN MODULE VIEW (BACK SIDE WITH SHIELD)82

18.3 WWAN MODULE VIEW (FRONT SIDE WITHOUT SHIELD).....83

18.4 WWAN MODULE VIEW (BACK SIDE WITHOUT SHIELD).....83

18.5 WWAN MODULE BUILT INTO THE TABLET PC (MOTION E1290)84

18.6 TABLET PC POWER SUPPLY VIEW84

18.7 WWAN MODULE BUILT INTO THE TABLET PC (E1290) DETAIL VIEW85

18.8 TABLET PC -FRONT VIEW.....86

18.9 TABLET PC -BACK VIEW86

18.10 TABLET PC - PORT VIEW (1)87

18.11 TABLET PC - PORT VIEW (2)87

18.12 TABLET PC - TOP SIDE VIEW88

19 APPENDIX I - INFORMATIVE REFERENCES89

1 GENERAL DESCRIPTION

1.1 Product Description for Equipment Under Test (EUT)

This test and measurement report was prepared on behalf of *NVIDIA Corporation* and their product, *model: P1001, FCC ID: VOB-P1001A, IC: 7361A-P1001A* or the “EUT” as referred to this report. The EUT is WWAN module with GSM and WCDMA technologies. hat is embedded into the NVIDIA Tablet PC (model: E1290), the module has features of WCDMA/HSDPA/HSUPA data at 850 MHz, 1900 MHz, and 2100 MHz bands, GSM/GPRS/EDGE data at 850 MHz, 900 MHz, 1800 MHz and 1900 MHz bands. The tablet PC and operates in the same manner as any laptop or mobile computing device with GSM/WCDMA modules.

1.2 EUT Technical Specification

Item	Description	
Modulation	GMSK/8PSK/QPSK/16QAM/64QAM	
Frequency Range	824.2-848.8 MHz	GPRS/EDGE 850
	826.4-846.6 MHz	WCDMA 850
	1850.2-1909.8 MHz	GPRS/EDGE 1900
	1852.4-1907.6 MHz	WCDMA 1900
Output Power:	32.67 dBm	GPRS 850
	22.57 dBm	WCDMA 850
	29.68 dBm	GPRS 1900
	22.45 dBm	WCDMA 1900
EUT Dimensions (L*W*H)	50mm(L) x 30mm(W) x 4 mm(H)	
EUT Weight	11g	
Host System Dimensions (L*W*H)	258mm(L) x 163mm(W) x 10 mm(H)	
Host System Weight	650g (with battery)	
Normal Operation	Body-worn	

The test data gathered are from typical production sample, serial number: 011567008962768 with host system NVIDIA tablet PC E1290 serial number: 0412911036188, provided by manufacture.

2 TEST FACILITY

The test site used by Bay Area Compliance Laboratories Corp. (BACL) to collect data is located at 1274 Anvilwood Ave, Sunnyvale, California 94089, USA.

BACL is a National Institute of Standards and Technology (NIST) accredited laboratory under the National Voluntary Laboratory Accredited Program (Lab Code 200167-0).



The current scope of accreditations can be found at: <http://ts.nist.gov/Standards/scopes/2001670.htm>

3 REFERENCE, STANDARDS AND GUIDELINES

FCC:

The Report and Order requires routine SAR evaluation prior to equipment authorization of portable transmitter devices, including portable telephones. For consumer products, the applicable limit is 1.6 mW/g as recommended by the ANSI/IEEE standard C95.1-1992 [6] for an uncontrolled environment (Paragraph 65). According to the Supplement C of OET Bulletin 65 "Evaluating Compliance with FCC Guide-lines for Human Exposure to Radio frequency Electromagnetic Fields", released on Jun 29, 2001 by the FCC, the device should be evaluated at maximum output power (radiated from the antenna) under "worst-case" conditions for normal or intended use, incorporating normal antenna operating positions, device peak performance frequencies and positions for maximum RF energy coupling.

This report describes the methodology and results of experiments performed on wireless data terminal. The objective was to determine if there is RF radiation and if radiation is found, what is the extent of radiation with respect to safety limits. SAR (Specific Absorption Rate) is the measure of RF exposure determined by the amount of RF energy absorbed by human body (or its parts) – to determine how the RF energy couples to the body or head which is a primary health concern for body worn devices. The limit below which the exposure to RF is considered safe by regulatory bodies in North America is 1.6 mW/g average over 1 gram of tissue mass.

CE:

The CE requires routine SAR evaluation prior to equipment authorization of portable transmitter devices, including portable telephones. For consumer products, the applicable limit is 2 mW/g as recommended by the EN50360 for an uncontrolled environment. According to the Standard, the device should be evaluated at maximum output power (radiated from the antenna) under "worst-case" conditions for normal or intended use, incorporating normal antenna operating positions, device peak performance frequencies and positions for maximum RF energy coupling.

This report describes the methodology and results of experiments performed on wireless data terminal. The objective was to determine if there is RF radiation and if radiation is found, what is the extent of radiation with respect to safety limits? SAR (Specific Absorption Rate) is the measure of RF exposure determined by the amount of RF energy absorbed by human body (or its parts) – to determine how the RF energy couples to the body or head which is a primary health concern for body worn devices. The limit below which the exposure to RF is considered safe by regulatory bodies in Europe is 2 mW/g average over 10 gram of tissue mass.

The test configurations were laid out on a specially designed test fixture to ensure the reproducibility of measurements. Each configuration was scanned for SAR. Analysis of each scan was carried out to characterize the above effects in the device.

3.1 SAR Limits

FCC Limit (1g Tissue)

EXPOSURE LIMITS	SAR (W/kg)	
	(General Population / Uncontrolled Exposure Environment)	(Occupational / Controlled Exposure Environment)
Spatial Average (averaged over the whole body)	0.08	0.4
Spatial Peak (averaged over any 1 g of tissue)	1.60	8.0
Spatial Peak (hands/wrists/feet/ankles averaged over 10 g)	4.0	20.0

CE Limit (10g Tissue)

EXPOSURE LIMITS	SAR (W/kg)	
	(General Population / Uncontrolled Exposure Environment)	(Occupational / Controlled Exposure Environment)
Spatial Average (averaged over the whole body)	0.08	0.4
Spatial Peak (averaged over any 1 g of tissue)	2.0	10
Spatial Peak (hands/wrists/feet/ankles averaged over 10 g)	4.0	20.0

Population/Uncontrolled Environments are defined as locations where there is the exposure of individual who have no knowledge or control of their exposure.

Occupational/Controlled Environments are defined as locations where there is exposure that may be incurred by people who are aware of the potential for exposure (i.e. as a result of employment or occupation).

General Population/Uncontrolled environments Spatial Peak limit 1.6 W/kg (FCC) & 2 W/kg (CE) applied to the EUT.

4 DESCRIPTION OF TEST SYSTEM

These measurements were performed with the automated near-field scanning system DASY4 from Schmid & Partner Engineering AG (SPEAG) which is the fourth generation of the system shown in the figure hereinafter:



The system is based on a high precision robot (working range greater than 0.9m), which positions the probes with a positional repeatability of better than $\pm 0.02\text{mm}$. Special E- and H-field probes have been developed for measurements close to material discontinuity, the sensors of which are directly loaded with a Schottky diode and connected via highly resistive lines to the data acquisition unit.

The SAR measurements were conducted with the dosimetric probe ET3DV6 SN: 1604 (manufactured by SPEAG), designed in the classical triangular configuration and optimized for dosimetric evaluation. The probe has been calibrated according to the procedure with accuracy of better than $\pm 10\%$. The spherical isotropy was evaluated with the procedure and found to be better than $\pm 0.25\text{dB}$.

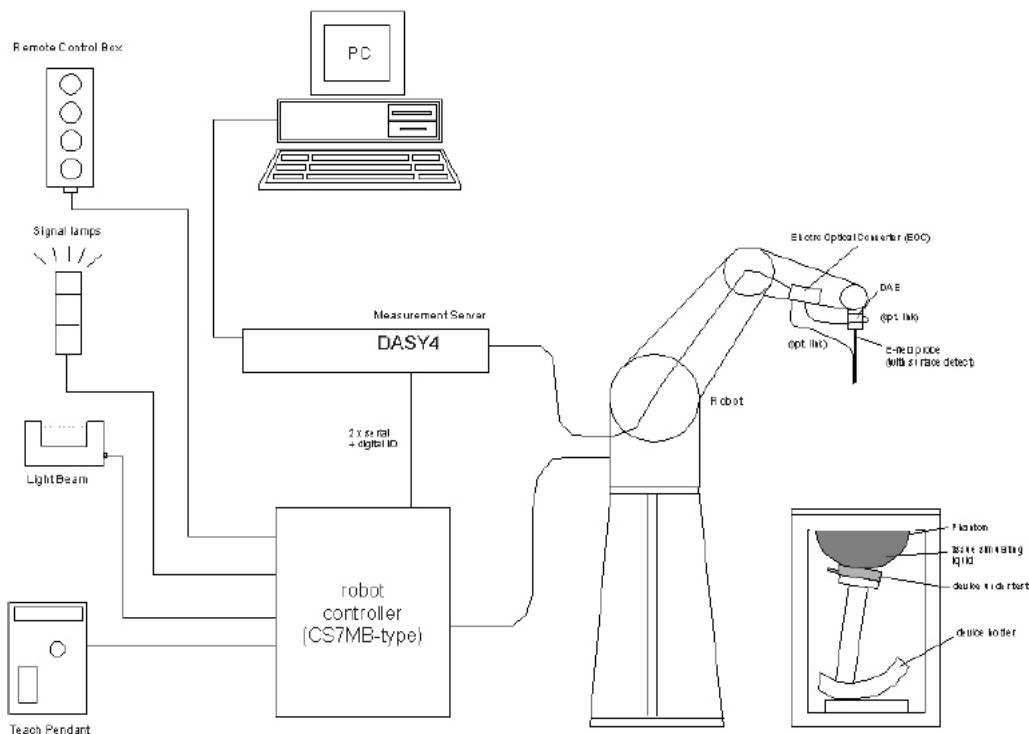
The phantom used was the Generic Twin Phantom”. The ear was simulated as a spacer of 4 mm thickness between the earpiece of the phone and the tissue simulating liquid. The Tissue simulation liquid used for each test is in according with the FCC OET65 supplement C as listed below.

Ingredients (% by weight)	Frequency (MHz)									
	450		835		915		1900		2450	
Tissue Type	Head	Body	Head	Body	Head	Body	Head	Body	Head	Body
Water	38.56	51.16	41.45	52.4	41.05	56.0	54.9	40.4	62.7	73.2
Salt (NaCl)	3.95	1.49	1.45	1.4	1.35	0.76	0.18	0.5	0.5	0.04
Sugar	56.32	46.78	56.0	45.0	56.5	41.76	0.0	58.0	0.0	0.0
HEC	0.98	0.52	1.0	1.0	1.0	1.21	0.0	1.0	0.0	0.0
Bactericide	0.19	0.05	0.1	0.1	0.1	0.27	0.0	0.1	0.0	0.0
Triton x-100	0.0	0.0	0.0	0.0	0.0	0.0	0.0	0.0	36.8	0.0
DGBE	0.0	0.0	0.0	0.0	0.0	0.0	44.92	0.0	0.0	26.7
Dielectric Constant	43.42	58.0	42.54	56.1	42.0	56.8	39.9	54.0	39.8	52.5
Conductivity (S/m)	0.85	0.83	0.91	0.95	1.0	1.07	1.42	1.45	1.88	1.78

4.1 IEEE SCC-34/SC-2 P1528 Recommended Tissue Dielectric Parameters

Frequency (MHz)	Head Tissue		Body Tissue	
	ϵ_r	σ (S/m)	ϵ_r	σ (S/m)
150	52.3	0.76	61.9	0.80
300	45.3	0.87	58.2	0.92
450	43.5	0.87	56.7	0.94
835	41.5	0.90	55.2	0.97
900	41.5	0.97	55.0	1.05
915	41.5	0.98	55.0	1.06
1450	40.5	1.20	54.0	1.30
1610	40.3	1.29	53.8	1.40
1800-2000	40.0	1.40	53.3	1.52
2450	39.2	1.80	52.7	1.95
3000	38.5	2.40	52.0	2.73
5800	35.3	5.27	48.2	6.00

4.2 Measurement System Diagram



The DASY4 system for performing compliance tests consists of the following items:

- A standard high precision 6-axis robot (Stäubli RX family) with controller, teach pendant and software. An arm extension for accommodating the data acquisition electronics (DAE).
- A dosimetric probe, i.e., an isotropic E-field probe optimized and calibrated for usage in tissue simulating liquid. The probe is equipped with an optical surface detector system.
- A data acquisition electronics (DAE) which performs the signal amplification, signal multiplexing, AD-conversion, offset measurements, mechanical surface detection, collision detection, etc. The unit is battery powered with standard or rechargeable batteries. The signal is optically transmitted to the EOC.
- The Electro-optical converter (EOC) performs the conversion between optical and electrical of the signals for the digital communication to the DAE and for the analog signal from the optical surface detection. The EOC is connected to the measurement server.
- The function of the measurement server is to perform the time critical tasks such as signal filtering, control of the robot operation and fast movement interrupts.
- A probe alignment unit which improves the (absolute) accuracy of the probe positioning.
- A computer operating Windows 2000 or Windows XP.

- DASY4 software.
- Remote control with teach pendant and additional circuitry for robot safety such as warning lamps, etc.
- The SAM twin phantom enabling testing left-hand and right-hand usage.
- The device holder for handheld mobile phones.
- Tissue simulating liquid mixed according to the given recipes.
- Validation dipole kits allowing system validation.

4.3 System Components

- DASY4 Measurement Server
- Data Acquisition Electronics
- Probes
- Light Beam Unit
- Medium
- SAM Twin Phantom
- Device Holder for SAM Twin Phantom
- System Validation Kits
- Robot

4.4 DASY4 Measurement Server

The DASY4 measurement server is based on a PC/104 CPU board with a 166MHz low-power Pentium, 32MB chip disk and 64MB RAM. The necessary circuits for communication with either the DAE4 (or DAE3) electronic box as well as the 16-bit AD-converter system for optical detection and digital I/O interface are contained on the DASY4 I/O-board, which is directly connected to the PC/104 bus of the CPU board.



The measurement server performs all real-time data evaluation for field measurements and surface detection, controls robot movements and handles safety operation. The PC-operating system cannot interfere with these time critical processes. All connections are supervised by a watchdog, and disconnection of any of the cables to the measurement server will automatically disarm the robot and disable all program-controlled robot movements. Furthermore, the measurement server is equipped with two expansion slots which are reserved for future applications. Please note that the expansion slots do not have a standardized pin out and therefore only the expansion cards provided by SPEAG can be inserted. Expansion cards from any other supplier could seriously damage the measurement server.

4.5 Data Acquisition Electronics

The data acquisition electronics DAE3 consists of a highly sensitive electrometer grade preamplifier with auto-zeroing, a channel and gain-switching multiplexer, a fast 16 bit AD-converter and a command decoder and control logic unit. Transmission to the measurement server is accomplished through an optical downlink for data and status information as well as an optical uplink for commands and the clock.



4.6 Probes

The DASY system can support many different probe types.

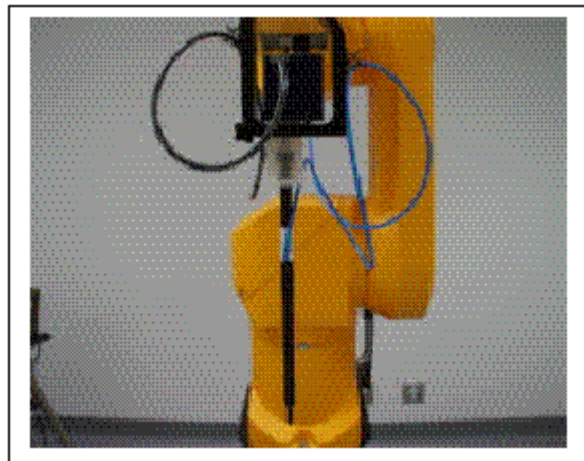
Dosimetric Probes: These probes are specially designed and calibrated for use in liquids with high permittivities. They should not be used in air, since the spherical isotropy in air is poor (± 2 dB). The dosimetric probes have special calibrations in various liquids at different frequencies.

Free Space Probes: These are electric and magnetic field probes specially designed for measurements in free space. The z-sensor is aligned to the probe axis and the rotation angle of the x-sensor is specified. This allows the DASY system to automatically align the probe to the measurement grid for field component measurement. The free space probes are generally not calibrated in liquid. (The H-field probes can be used in liquids without any change of parameters.)

Temperature Probes: Small and sensitive temperature probes for general use. They use a completely different parameter set and different evaluation procedures. Temperature rise features allow direct SAR evaluations with these probes.

4.7 ET3DV6 Probe Specification

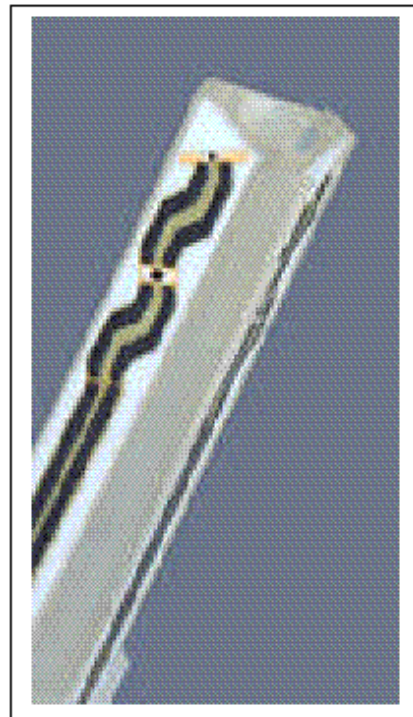
Construction Symmetrical design with triangular core
 Built-in optical fiber for surface detection System
 Built-in shielding against static charges
 Calibration In air from 10 MHz to 2.5 GHz
 In brain and muscle simulating tissue at
 Frequencies of 450 MHz, 900 MHz and
 1.8 GHz (accuracy $\pm 8\%$)
 Frequency 10 MHz to > 6 GHz; Linearity: ± 0.2 dB
 (30 MHz to 3 GHz)
 Directivity ± 0.2 dB in brain tissue (rotation around
 probe axis)
 ± 0.4 dB in brain tissue (rotation normal probe axis)
 Dynamic 5 mW/g to > 100 mW/g;
 Range Linearity: ± 0.2 dB
 Surface ± 0.2 mm repeatability in air and clear liquids
 Detection over diffuse reflecting surfaces.
 Dimensions Overall length: 330 mm
 Tip length: 16 mm



Photograph of the probe

Body diameter: 12 mm
 Tip diameter: 6.8 mm
 Distance from probe tip to dipole centers: 2.7 mm
 Application General dosimetric up to 3 GHz
 Compliance tests of mobile phones
 Fast automatic scanning in arbitrary phantoms

The SAR measurements were conducted with the dosimetric probe ET3DV6 designed in the classical triangular configuration and optimized for dosimetric evaluation. The probe is constructed using the thick film technique; with printed resistive lines on ceramic substrates. The probe is equipped with an optical multi-fiber line ending at the front of the probe tip. It is connected to the EOC box on the robot arm and provides an automatic detection of the phantom surface. Half of the fibers are connected to a pulsed infrared transmitter, the other half to a synchronized receiver. As the probe approaches the surface, the reflection from the surface produces a coupling from the transmitting to the receiving fibers. This reflection increases first during the approach, reaches maximum and then decreases. If the probe is flatly touching the surface, the coupling is zero. The distance of the coupling maximum to the surface is independent of the surface reflectivity and largely independent of the surface to probe angle. The DASY3 software reads the reflection during a software approach and looks for the maximum using a 2nd order fitting. The approach is stopped when reaching the maximum.



**Inside view of
ET3DV6 E-field Probe**

4.8 E-Field Probe Calibration Process

Each probe is calibrated according to a dosimetric assessment procedure described in [6] with accuracy better than $\pm 10\%$. The spherical isotropy was evaluated with the procedure described in [7] and found to be better than $\pm 0.25\text{dB}$. The sensitivity parameters (NormX, NormY, NormZ), the diode compression parameter (DCP) and the conversion factor (ConvF) of the probe are tested.

The free space E-field from amplified probe outputs is determined in a test chamber. This is performed in a TEM cell for frequencies below 1 GHz, and in a waveguide above 1 GHz for free space. For the free space calibration, the probe is placed in the volumetric center of the cavity and at the proper orientation with the field. The probe is then rotated 360 degrees.

E-field temperature correlation calibration is performed in a flat phantom filled with the appropriate simulated brain tissue. The measured free space E-field in the medium correlates to temperature rise in dielectric medium. For temperature correlation calibration a RF transparent thermistor-based temperature probe is used in conjunction with the E-field probe.

4.9 Data Evaluation

The DASY4 Post processing software (SEMCAD) automatically executes the following procedures to calculate the field units from the microvolt readings at the probe connector. The parameters used in the evaluation are stored in the configuration modules of the software:

Probe parameters: - Sensitivity	Normi, ai0, ai1, ai2
- Conversion factor	ConvFi
- Diode compression point	dcpi

Device parameters: - Frequency	f
- Crest factor	cf
Media parameters: - Conductivity	σ
- Density	ρ

These parameters must be set correctly in the software. They can be found in the component documents or they can be imported into the software from the configuration files issued for the DASY components. In the direct measuring mode of the multimeter option, the parameters of the actual system setup are used. In the scan visualization and export modes, the parameters stored in the corresponding document files are used.

The first step of the evaluation is a linearization of the filtered input signal to account for the compression characteristics of the detector diode. The compensation depends on the input signal, the diode type and the DC-transmission factor from the diode to the evaluation electronics. If the exciting field is pulsed, the crest factor of the signal must be known to correctly compensate for peak power. The formula for each channel can be given as:

$$V_i = U_i + U_i^2 \cdot \frac{cf}{dcp_i}$$

With V_i = compensated signal of channel i (i=x, y, z)
 U_i = input signal of channel i (i=x, y, z)
 cf = crest factor of exciting field (DASY parameter)
 dcp_i = diode compression point (DASY parameter)

From the compensated input signals the primary field data for each channel can be evaluated:

$$\text{E - fieldprobes : } E_i = \sqrt{\frac{V_i}{Norm_i \cdot ConF}}$$

$$\text{H - fieldprobes : } H_i = \sqrt{V_i} \cdot \frac{a_{i0} + a_{i1}f + a_{i2}f^2}{f}$$

With V_i = compensated signal of channel i (i=x, y, z)
 $Norm_i$ = sensor sensitivity of channel i (i=x, y, z)
 $\mu\text{V}/(\text{V/m})^2$ for E-field probes
 ConF = sensitivity enhancement in solution
 a_{ij} = sensor sensitivity factors for H-field probes
 f = carrier frequency [GHz]
 E_i = electric field strenggy of channel i in V/m
 H_i = diode compression point (DASY parameter)

The RSS value of the field components gives the total field strength (Hermitian magnitude):

$$E_{tot} = \sqrt{E_x^2 + E_y^2 + E_z^2}$$

The primary field data are used to calculate the derived field units.

$$SAR = E_{tot}^2 \cdot \frac{\sigma}{\rho \cdot 1'000}$$

With SAR = local specific absorption rate in mW/g
 E_{tot} = total field strength in V/m
 σ = conductivity in [mho/meter] or [Siemens/meter]
 ρ = equivalent tissue density in g/cm³

Note that the density is normally set to 1, to account for actual brain density rather than the density of the simulation liquid.

4.10 Light Beam Unit

The light beam switch allows automatic “tooling” of the probe. During the process, the actual position of the probe tip with respect to the robot arm is measured, as well as the probe length and the horizontal probe offset. The software then corrects all movements, so that the robot coordinates are valid for the probe tip. The repeatability of this process is better than 0.1 mm. If a position has been taught with an aligned probe, the same position will be reached with another aligned probe within 0.1 mm, even if the other probe has different dimensions. During probe rotations, the probe tip will keep its actual position.

4.11 Medium

Parameters

The parameters of the tissue simulating liquid strongly influence the SAR in the liquid. The parameters for the different frequencies are defined in the corresponding compliance standards (e.g., EN 50361, IEEE 1528-2003).

Parameter measurements

Several measurement systems are available for measuring the dielectric parameters of liquids:

- The open coax test method (e.g., HP85070 dielectric probe kit) is easy to use, but has only moderate accuracy. It is calibrated with open, short, and deionized water and the calibrations a critical process.
- The transmission line method (e.g., model 1500T from DAMASKOS, INC.) measures the transmission and reflection in a liquid filled high precision line. It needs standard two port calibration and is probably more accurate than the open coax method.
- The reflection line method measures the reflection in a liquid filled shorted precision lined. The method is not suitable for these liquids because of its low sensitivity.
- The slotted line method scans the field magnitude and phase along a liquid filled line. The evaluation is straight forward and only needs a simple response calibration. The method is very accurate, but can only be used in high loss liquids and at frequencies above 100 to 200MHz. Cleaning the line can be tedious.

4.12 SAM Twin Phantom

The SAM twin phantom is a fiberglass shell phantom with 2mm shell thickness (except the ear region where shell thickness increases to 6mm). It has three measurement areas:

- Left hand
- Right hand
- Flat phantom

The phantom table comes in two sizes: A 100 x 50 x 85 cm (L x W x H) table for use with free standing robots (DASY4 professional system option) or as a second phantom and a 100 x 75 x 85 cm (L x W x H) table with reinforcements for table mounted robots (DASY4 compact system option).

The bottom plate contains three pair of bolts for locking the device holder. The device holder positions are adjusted to the standard measurement positions in the three sections. Only one device holder is necessary if two phantoms are used (e.g., for different liquids) A white cover is provided to tap the phantom during o₂-periods to prevent water evaporation and changes in the liquid parameters. Free space scans of devices on the cover are possible. On the phantom top, three reference markers are provided to identify the phantom position with respect to the robot.



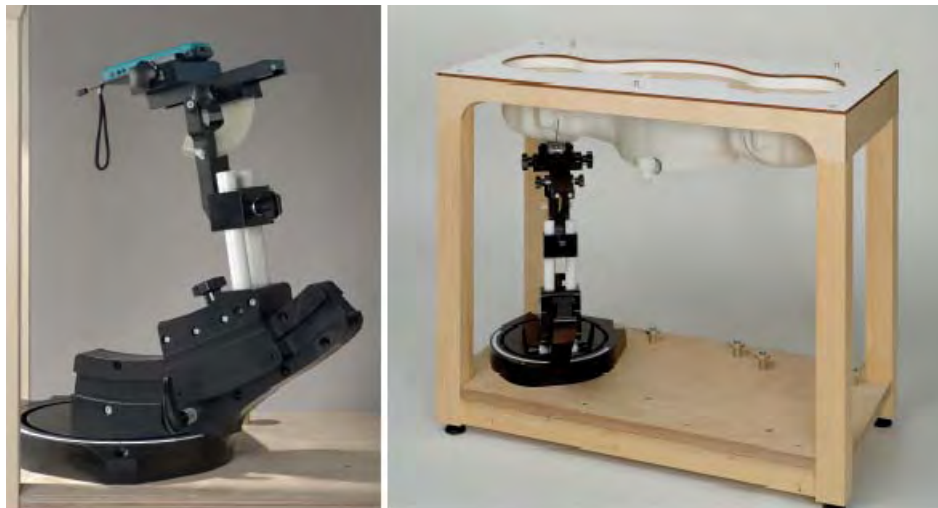
The phantom can be used with the following tissue simulating liquids:

- Water-sugar based liquids can be left permanently in the phantom. Always cover the liquid if the system is not used, otherwise the parameters will change due to water evaporation.
- Glycol based liquids should be used with care. As glycol is a softener for most plastics, the liquid should be taken out of the phantom and the phantom should be dried when the system is not used (desirable at least once a week).
- Do not use other organic solvents without previously testing the phantom's compatibility.

4.13 Device Holder for SAM Twin Phantom

The SAR in the phantom is approximately inversely proportional to the square of the distance between the source and the liquid surface. For a source in 5mm distance, a positioning uncertainty of ± 0.5 mm would produce a SAR uncertainty of $\pm 20\%$. An accurate device positioning is therefore crucial for accurate and repeatable measurements. The positions, in which the devices must be measured, are defined by the standards.

The DASY device holder is designed to cope with different positions given in the standard. It has two scales for the device rotation (with respect to the body axis) and the device inclination (with respect to the line between the ear reference points). The rotation centers for both scales is the ear reference point ERP. Thus the device needs no repositioning when changing the angles.



The DASY device holder has been made out of low-loss POM material having the following dielectric parameters: relative permittivity $\epsilon_r=3$ and loss tangent $\tan \delta=0.02$. The amount of dielectric material has been reduced in the closest vicinity of the device, since measurements have suggested that the influence of the clamp on the test results could thus be lowered.

4.14 System Validation Kits

Each DASY system is equipped with one or more system validation kits. These units, together with the predefined measurement procedures within the DASY software, enable the user to conduct the system performance check and system validation. For that purpose a well defined SAR distribution in the flat section of the SAM twin phantom is produced.

System validation kit includes a dipole, tripod holder to fix it underneath the flat phantom and a corresponding distance holder. Dipoles are available for the variety of frequencies between 300MHz and 6 GHz (dipoles for other frequencies or media and other calibration conditions are available upon request).

The dipoles are highly symmetric and matched at the center frequency for the specified liquid and distance to the flat phantom (or flat section of the SAM-twin phantom). The accurate distance between the liquid surface and the dipole center is achieved with a distance holder that snaps on the dipole.

4.15 Robot

The DASY4 system uses the high precision industrial robots RX60L, RX90 and RX90L, as well as the RX60BL and RX90BL types out of the newer series from Stäubli SA (France). The RX robot series offers many features that are important for our application:

- High precision (repeatability 0.02mm)
- High reliability (industrial design)
- Low maintenance costs (virtually maintenance-free due to direct drive gears; no belt drives)
- Jerk-free straight movements (brushless synchronous motors; no stepper motors)
- Low ELF interference (the closed metallic construction shields against motor control fields)

For the newly delivered DASY4 systems as well as for the older DASY3 systems delivered since 1999, the CS7MB robot controller version from Stäubli is used. Previously delivered systems have either a CS7 or CS7M controller; the differences to the CS7MB are mainly in the hardware, but some procedures in the robot software from Stäubli are also not completely the same. The following descriptions about robot hard- and software correspond to CS7MB controller with software version 13.1 (edit S5). The actual commands, procedures and configurations, also including details in hardware, might differ if an older robot controller is in use. In this case please also refer to the Stäubli manuals for further information.



5 EQUIPMENT LIST AND CALIBRATION

5.1 Equipments List & Calibration Info

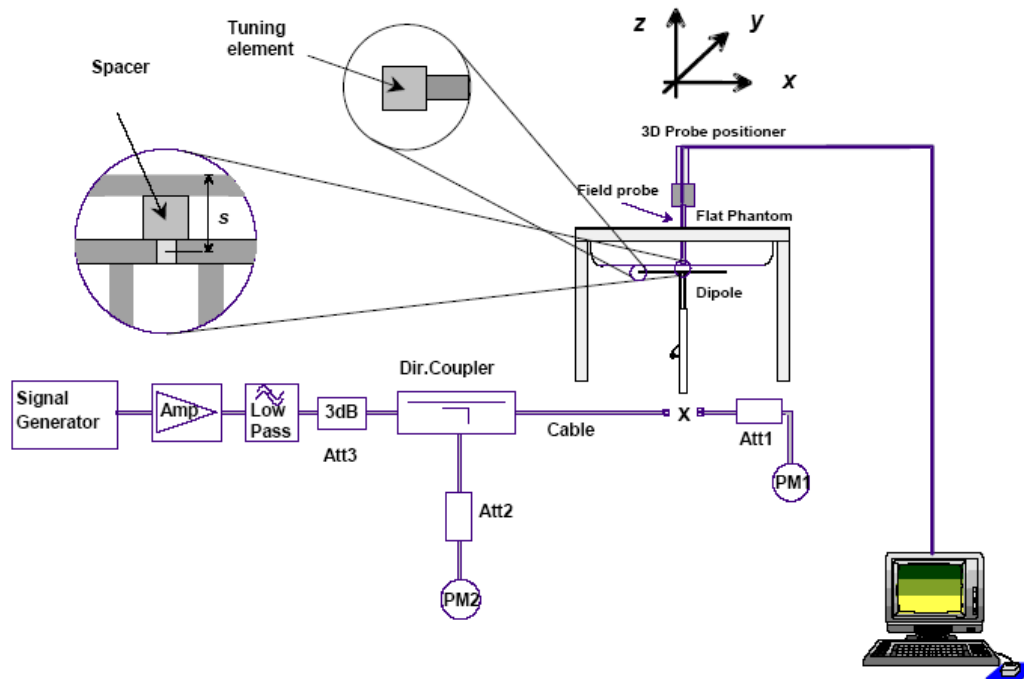
Type / Model	Cal. Due Date	S/N
DASY4 Professional Dosimetric System	N/A	N/A
Robot RX60L	N/A	CS7MBSP / 467
Robot Controller	N/A	F01/5J72A1/A/01
Dell Computer Dimension 3000	N/A	N/A
SPEAG EDC3	N/A	N/A
SPEAG DAE3	2012-12-07	456
DASY4 Measurement Server	N/A	1176
Schmid & Partner ES3DV2	2012-08-25	3019
Antenna, Dipole, ALS-D-835-S-2	2014-08-25	180-00558
Antenna, Dipole, ALS-D-1900-S-2	2014-08-25	210-00710
SPEAG Flat Phantom	N/A	1004
Muscle Equivalent Matter (835 MHz)	Each Time	N/A
Muscle Equivalent Matter (1900 MHz)	Each Time	N/A
Agilent, Spectrum Analyzer E4440A	2012-05-10	MY44303352
Microwave Amp. 8349A	N/A	2644A02662
Power Meter Agilent E4419B	2012-09-01	MY4121511
Power Sensor Agilent E9301A	2012-05-09	US39211706
Dielectric Probe Kit HP85070A	N/A	US99360201
HP, Signal Generator, 83650B	2012-06-21	3614A00276
Amplifier, ST181-20	N/A	E012-0101
Antenna, Horn DRH-118	N/A	A052704

6 SAR MEASUREMENT SYSTEM VERIFICATION

6.1 System Accuracy Verification

Prior to the assessment, the system validation kit was used to test whether the system was operating within its specifications of $\pm 10\%$. The validation results are tabulated below. And also the corresponding SAR plot is attached as well in the SAR plots files.

6.2 System Setup Block Diagram



6.3 Liquid and System Validation

Measured Date	Medium Type	Freq. [MHz]	Parameters	Liquid Temp [°C]	Target Value (w/kg)	Measured Value (w/kg)	Deviation [%]	Limits [%]
2011-12-12	Body	835	ϵ_r	23	55.2	55.9	1.27	± 5
			σ	23	0.97	0.96	-1.03	± 5
			1g SAR	23	9.684	9.02	-6.86	± 10
2011-12-12	Body	1900	ϵ_r	23	53.3	52.4	-1.69	± 5
			σ	23	1.52	1.5	-1.32	± 5
			1g SAR	23	39.769	40.2	1.08	± 10

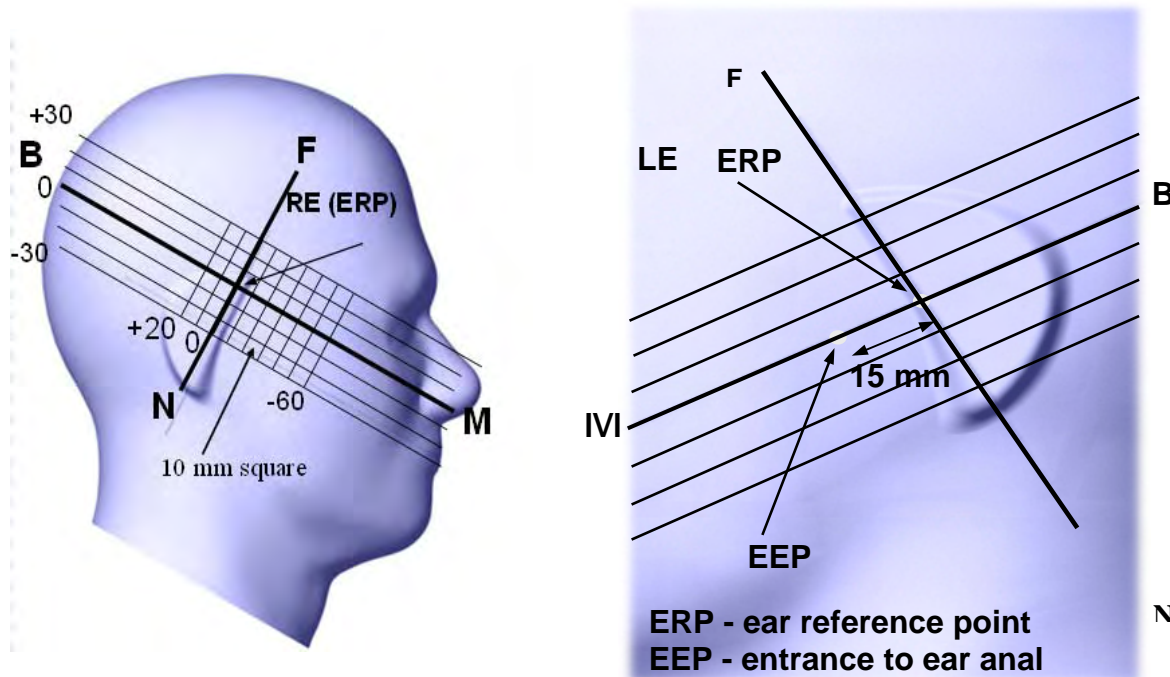
ϵ_r = relative permittivity, σ = conductivity and $\rho=1000 \text{ kg/m}^3$

7 EUT TEST STRATEGY AND METHODOLOGY

7.1 Test Positions for Device Operating Next to a Person’s Ear

This category includes most wireless handsets with fixed, retractable or internal antennas located toward the top half of the device, with or without a foldout, sliding or similar keypad cover. The handset should have its earpiece located within the upper ¼ of the device, either along the centerline or off-centered, as perceived by its users. This type of handset should be positioned in a normal operating position with the “test device reference point” located along the “vertical centerline” on the front of the device aligned to the “ear reference point”. The “test device reference point” should be located at the same level as the center of the earpiece region. The “vertical centerline” should bisect the front surface of the handset at its top and bottom edges. An “ear reference point” is located on the outer surface of the head phantom on each ear spacer. It is located 1.5 cm above the center of the ear canal entrance in the “phantom reference plane” defined by the three lines joining the center of each “ear reference point” (left and right) and the tip of the mouth.

A handset should be initially positioned with the earpiece region pressed against the ear spacer of a head phantom. For the SCC-34/SC-2 head phantom, the device should be positioned parallel to the “N-F” line defined along the base of the ear spacer that contains the “ear reference point”. For interim head phantoms, the device should be positioned parallel to the cheek for maximum RF energy coupling. The “test device reference point” is aligned to the “ear reference point” on the head phantom and the “vertical centerline” is aligned to the “phantom reference plane”. This is called the “initial ear position”. While maintaining these three alignments, the body of the handset is gradually adjusted to each of the following positions for evaluating SAR:



7.2 Cheek/Touch Position

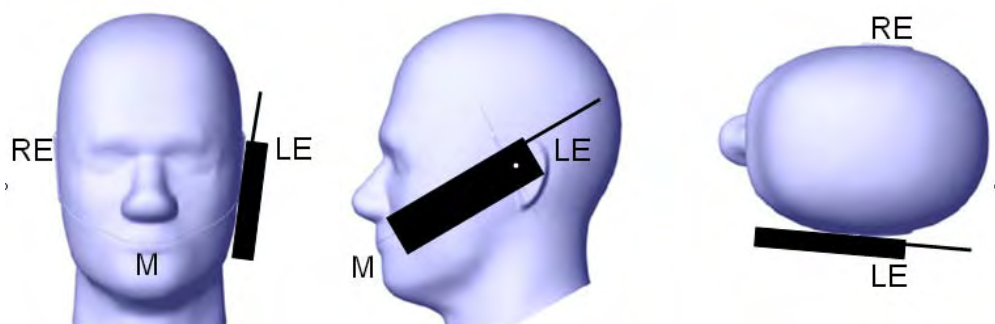
The device is brought toward the mouth of the head phantom by pivoting against the “ear reference point” or along the “N-F” line for the SCC-34/SC-2 head phantom.

This test position is established:

- When any point on the display, keypad or mouthpiece portions of the handset is in contact with the phantom.
- (or) When any portion of a foldout, sliding or similar keypad cover opened to its intended self-adjusting normal use position is in contact with the cheek or mouth of the phantom.

For existing head phantoms – when the handset loses contact with the phantom at the pivoting point, rotation should continue until the device touches the cheek of the phantom or breaks its last contact from the ear spacer.

Cheek /Touch Position



7.3 Ear/Tilt Position

With the handset aligned in the “Cheek/Touch Position”:

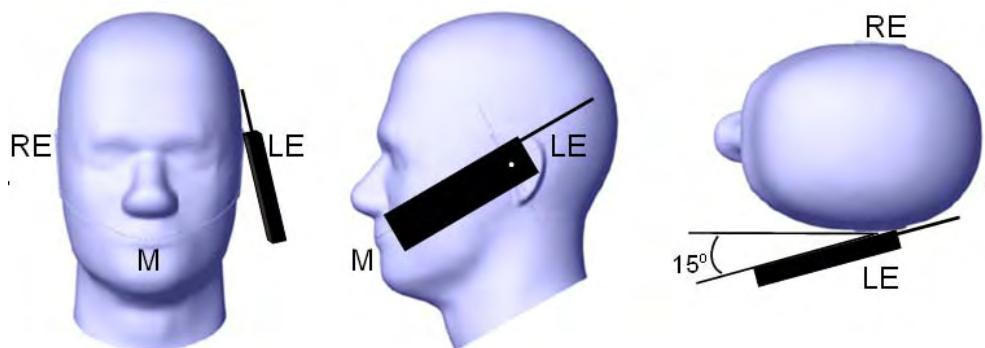
1) If the earpiece of the handset is not in full contact with the phantom’s ear spacer (in the “Cheek/Touch position”) and the peak SAR location for the “Cheek/Touch” position is located at the ear spacer region or corresponds to the earpiece region of the handset, the device should be returned to the “initial ear position” by rotating it away from the mouth until the earpiece is in full contact with the ear spacer.

2) (otherwise) The handset should be moved (translated) away from the cheek perpendicular to the line passes through both “ear reference points” (note: one of these ear reference points may not physically exist on a split head model) for approximate 2-3 cm. While it is in this position, the device handset is tilted away from the mouth with respect to the “test device reference point” until the inside angle between the vertical centerline on the front surface of the phone and the horizontal line passing through the ear reference point is by $15\ 80^\circ$. After the tilt, it is then moved (translated) back toward the head perpendicular to the line passes through both “ear reference points” until the device touches the phantom or the ear spacer. If the antenna touches the head first, the positioning process should be repeated with a tilt angle less than $15\ 80^\circ$ so that the device and its antenna would touch the phantom simultaneously. This test position may require a device holder or positioner to achieve the translation and tilting with acceptable positioning repeatability.

If a device is also designed to transmit with its keypad cover closed for operating in the head position, such positions should also be considered in the SAR evaluation. The device should be tested on the left and right side of the head phantom in the “Cheek/Touch” and “Ear/Tilt” positions. When applicable, each configuration should be tested with the antenna in its fully extended and fully retracted positions. These test configurations should be tested at the high, middle and low frequency channels of each

operating mode; for example, AMPS, CDMA, and TDMA. If the SAR measured at the middle channel for each test configuration (left, right, Cheek/Touch, Tile/Ear, extended and retracted) is at least 2.0 dB lower than the SAR limit, testing at the high and low channels is optional for such test configuration(s). If the transmission band of the test device is less than 10 MHz, testing at the high and low frequency channels is optional.

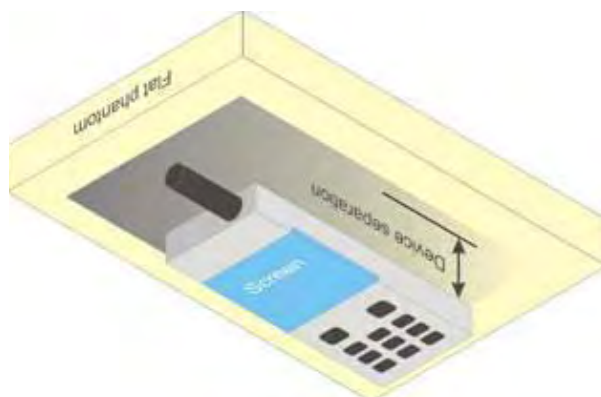
Ear /Tilt 15° Position



7.4 Test positions for body-worn and other configurations

Body-worn operating configurations should be tested with the belt-clips and holsters attached to the device and positioned against a flat phantom in normal use configurations. Devices with a headset output should be tested with a headset connected to the device. When multiple accessories that do not contain metallic components are supplied with the device, the device may be tested with only the accessory that dictates the closest spacing to the body. When multiple accessories that contain metallic components are supplied with the device, the device must be tested with each accessory that contains a unique metallic component. If multiple accessories share an identical metallic component (e.g., the same metallic belt-clip used with different holsters with no other metallic components), only the accessory that dictates the closest spacing to the body must be tested.

Body-worn accessories may not always be supplied or available as options for some devices that are intended to be authorized for body-worn use. A separation distance of 1.5 cm between the back of the device and a flat phantom is recommended for testing body-worn SAR compliance under such circumstances. Other separation distances may be used, but they should not exceed 2.5 cm. In these cases, the device may use body-worn accessories that provide a separation distance greater than that tested for the device provided however that the accessory contains no metallic components.



7.5 SAR Evaluation Procedure

The evaluation was performed with the following procedure:

Step 1: Measurement of the SAR value at a fixed location above the ear point or central position was used as a reference value for assessing the power drop. The SAR at this point is measured at the start of the test and then again at the end of the testing.

Step 2: The SAR distribution at the exposed side of the head was measured at a distance of 4 mm from the inner surface of the shell. The area covered the entire dimension of the head or EUT and the horizontal grid spacing was 15 mm x 15 mm. Based on these data, the area of the maximum absorption was determined by line interpolation. The first Area Scan covers the entire dimension of the EUT to ensure that the hotspot was correctly identified.

Step 3: Around this point, a volume of 30 mm x 30 mm x 21 mm was assessed by measuring 5 x 5 x 7 points. On the basis of this data set, the spatial peak SAR value was evaluated under the following procedure:

1. The data at the surface were extrapolated, since the center of the dipoles is 1.2 mm away from the tip of the probe and the distance between the surface and the lowest measuring point is 1.3 mm. The extrapolation was based on a least square algorithm. A polynomial of the fourth order was calculated through the points in z-axes. This polynomial was then used to evaluate the points between the surface and the probe tip.
2. The maximum interpolated value was searched with a straightforward algorithm. Around this maximum the SAR values averaged over the spatial volumes (1 g or 10 g) were computed by the 3D-Spline interpolation algorithm. The 3D-Spline is composed of three one dimensional splines with the "Not a knot"-condition (in x, y and z-directions). The volume was integrated with the trapezoidal-algorithm. One thousand points (10 x 10 x 10) were interpolated to calculate the averages.
3. All neighboring volumes were evaluated until no neighboring volume with a higher average value was found.

Step 4: Re-measurement of the SAR value at the same location as in Step 1. If the value changed by more than 5%, the evaluation was repeated.

8 DASY4 SAR EVALUATION PROCEDURE

8.1 Power Reference Measurement

The Power Reference Measurement and Power Drift Measurement jobs are useful jobs for monitoring the power drift of the device under test in the batch process. Both jobs measure the field at a specified reference position, at a selectable distance from the phantom surface. The reference position can be either the selected section's grid reference point or a user point in this section. The reference job projects the selected point onto the phantom surface, orients the probe perpendicularly to the surface, and approaches the surface using the selected detection method. The Minimum distance of probe sensors to surface determines the closest measurement point to phantom surface. By default, the Minimum distance of probe sensors to surface is 4mm. This distance can be modified by the user, but cannot be smaller than the Distance of sensor calibration points to probe tip as defined in the probe properties (for example, 2.7mm for an ET3DV6 probe type).

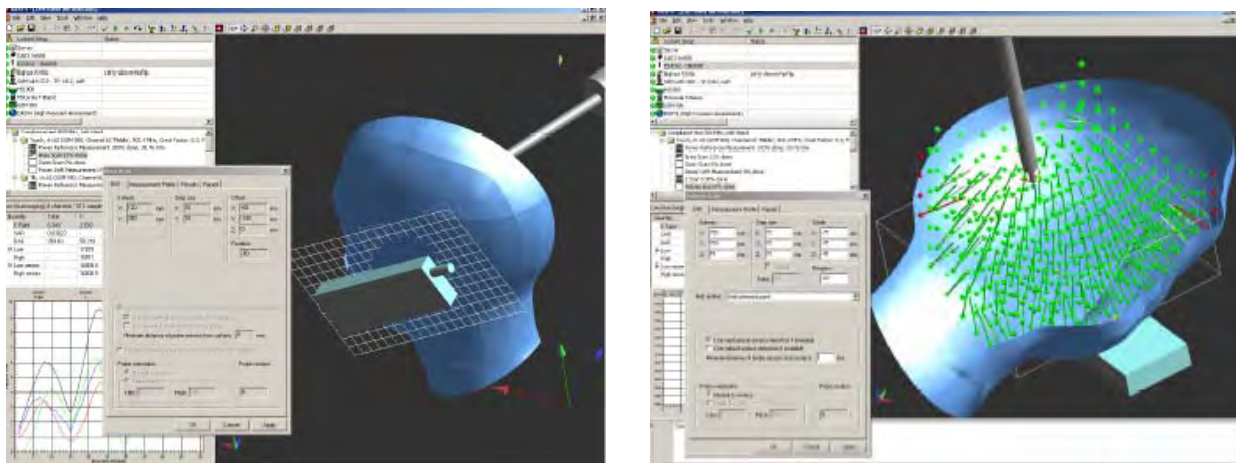
8.2 Area Scan

The Area Scan is used as a fast scan in two dimensions to find the area of high field values, before doing a finer measurement around the hot spot. The sophisticated interpolation routines implemented in DASY4 software can find the maximum locations even in relatively coarse grids.

The scanning area is defined by an editable grid. This grid is anchored at the grid reference point of the selected section in the phantom. When the Area Scan's property sheet is brought-up, grid settings can be edited by a user.

When an Area Scan has measured all reachable points, it computes the field maxima found in the scanned area, within a range of the global maximum. The range (in dB) is specified in the standards for compliance testing. For example, a 2 dB range is required in IEEE 1528-2003, EN 50361 and IEC 62209 standards, whereby 3 dB is a requirement when compliance is assessed in accordance with the ARIB standard (Japan). If only one Zoom Scan follows the Area Scan, then only the absolute maximum will be taken as reference. For cases where multiple maximums are detected, the number of Zoom Scans has to be increased accordingly.

After measurement is completed, all maxima and their coordinates are listed in the Results property page. The maximum selected in the list is highlighted in the 3-D view. For the secondary maxima returned from an Area Scan, the user can specify a lower limit (peak SAR value), in addition to the Find secondary maxima within x dB condition. Only the primary maximum and any secondary maxima within x dB from the primary maximum and above this limit will be measured.



8.3 Zoom Scan

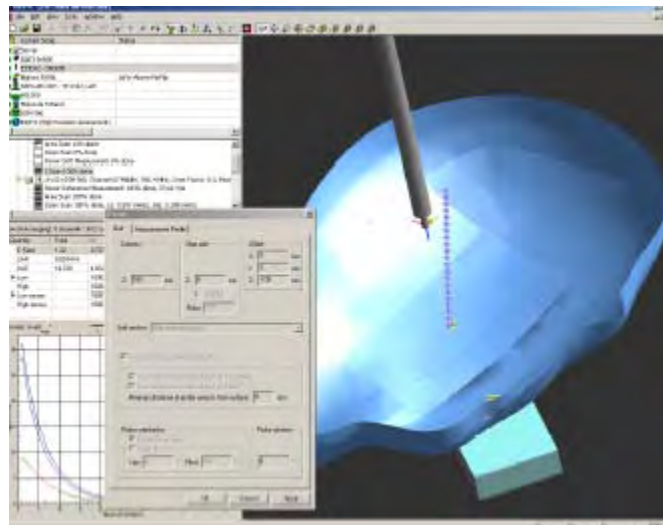
Zoom Scans are used to assess the peak spatial SAR values within a cubic averaging volume containing 1 g and 10 g of simulated tissue. The default Zoom Scan measures 5 x 5 x 7 points within a cube whose base faces are centered around the maxima found in a preceding area scan job within the same procedure. When the measurement is done, the Zoom Scan evaluates the averaged SAR for 1 g and 10 g and displays these values next to the job's label.

8.4 Power drift measurement

The Power Drift Measurement job measures the field at the same location as the most recent power reference measurement job within the same procedure, and with the same settings. The Power Drift Measurement gives the field difference in dB from the reading conducted within the last Power Reference Measurement. Several drift measurements are possible for one reference measurement. This allows a user to monitor the power drift of the device under test within a batch process. The measurement procedure is the same as Step 1.

8.5 Z-Scan

The Z Scan job measures points along a vertical straight line. The line runs along the Z axis of a one-dimensional grid. A user can anchor the grid to the section reference point, to any defined user point or to the current probe location. As with any other grids, the local Z axis of the anchor location establishes the Z axis of the grid.



9 FCC 3G MEASUREMENT PROCEDURES

Power measurements were performed using a base station simulator under average power.

Procedures Used to Establish RF Signal for SAR

The following procedures are applicable to HSDPA data devices operating under 3GPP Release 5. Body exposure conditions are typically applicable to these devices, including handsets and data modems operating in various electronics devices. HSDPA operates in conjunction with WCDMA and requires an active DPCCCH. The default test configuration is to measure SAR in WCDMA and requires without HSDPA, with an established radio link between the DUT and communication test set using a 12.2kbps RMC configured in Test Loop Mode 1; and test HSDPA within FRC and a 12.2 kbps RMC using highest SAR configuration in WCDMA. SAR is selectively confirmed for other physical channels configurations according to output power, exposure conditions and device operating capabilities. Maximum output power is verified according to 3GPP TS 23.121 (Release 5) and SAR must be measured according to these maximum output conditions.

The device was placed into a simulated call using a base station simulator in a shielded chamber. Such test signals offer a consistent means for testing SAR and recommended for evaluating SAR [4]. SAR measurements were taken with a fully charged battery. In order to verify that the device was tested and maintained at full power, this was configured with the base station simulator. The SAR measurement software calculates a reference point at the start and end of the test to check for power drifts. If conducted power deviations of more than 5% occurred, the test were repeated.

SAR Measurement Conditions for HSDPA Data Devices

Output Power Verification

Maximum output power is verified on the High, Middle and Low channels according to the general descriptions in section 5.2 of 3GPP TS 34.121 (release 5), using the appropriate RMC with TPC (Transmit Power Control) set to all "1s". Results for all applicable physical channel configurations (DPCCCH, DPDCHn and spreading codes, HS-DPCCCH) are tabulated in the test report. All configurations that are not supported by the DUT or cannot be measured due to technical or equipment limitations is identified.

For WCDMA/HSDPA/HSUPA

Configure the Agilent 8960 to support all WCDMA tests in respect to the 3GPP TS 34.121, measure the power at channel 4132, 4182 and 4233 for UC cellular, channel 9262, 9400 and 9538 for US PCS band.

For Rel 99:

Set the test mode 1 loop using 12.2kbps RMC. Set and send continuously up power control commands to the EUT. And measure the power through the antenna connector of the EUT.

For HSDPA Rel 8:

Set the test mode 1 loop using 12.2kbps RMC and a H-set1 FRC. Set the HSDPA setting for HSDPA subtest 1 and send the continuously up power command to the EUT. And measure the power through the antenna connector of the EUT. Repeat the measurement for sub test 2, 3 and 4.

For HSUPA Rel 8:

Set the test mode 1 loop using 12.2kbps RMC and a H-set1 FRC. Set the HSUPA setting for HSDPA subtest 1. Set the UNDP power to at least 5dB lower than the MAX output power. Send power control bit to give TPC_cmd=+1 command to the UNDP. Confirm the E-TFCI transmitted by the UNDP is equal to the target E-TFCI in 3GPP TS 34.121. And measure the power through the antenna connector of the EUT. Repeat the measurement for sub test 2, 3, 4 and 5.

For GSM/GPRS/EDGE

This EUT is a class B device which means the EUT can connect to GPRS and GSM service but using only one or the other at the given time.

And the EUT has one time slot transmission and two time slots (two UL and two DL MAX) transmission for GMSK GPRS. And one time slot for 8PSK EDGE.

Configure the 8960 to support GPRS and EDGE, and set one time slot transmission for GPRS and EDGE. Measure the power output from the antenna port of the EUT. Repeat the measurement by configure the 2 time slots for GPRS.

For WCDMA/HSDPA/HSUPA

SAR body exposure configuration is measured using 12.2 kbps RMC with the TPC bits configured for all "1s". SAR for other spreading codes and multiple DPDCH_n, when supported by the DUT, are not required when the maximum average outputs of each RF channel, for each spreading code and DPDCH_n configuration, are less than ¼ dB higher than those measured in 12.2 RMC. Otherwise, SAR is measured on the maximum output channel with an applicable RMS configuration that results in the highest SAR with 12.2 RMC. When more that

2 DPDCH_n are supported by the DUT, it may be necessary to configure additional DPDCH_n for DUT using FTM (Factory Test Mode) with parameters similar to those used in 384 kbps and 768 kbps RMC. In addition, body SAR is also measured in HSDPA with an FRC, together with a 12.2 kbps RMC configured in Test Loop Mode 1, using the highest body SAR configuration in 12.2 kbps RMC without HSDPA.

The H-set used in FRC for HSDPA should be configured according to the UE category of a test device. The number of HS-DSCH/HSDSCHs, HARQ processes, minimum inter-TTI interval, transport block sizes and RV coding sequence are defined by the applicable H-set. To maintain a consistent test configuration and stable transmission conditions, QPSK is used in the FRC for SAR testing. HS-DPCCH should be configured with a CQI feedback cycle of 2 ms to maintain a constant rate of active CQI slots. DPCCH and DPDCH gain factors of $\beta_c=9$ and $\beta_d=15$, and power offset parameters of $\alpha_{ACK} = \alpha_{NACK} = 5$ and $\alpha_{CQI} = 2$ should be used. The CQI value is determined by the UE category, transport block size, number of HS-PDSCHs and modulation used in the FRC.

For GSM/GPRS/EDGE

SAR body exposure configuration is measured using GPRS 2 time slots as the time average power is higher then GPRS 1 time slot and EDGE.

Agilent 8960 measures the average output power for active timeslots. For SAR the time-based average power is relevant. The difference in between depends on the duty cycle of the TDMA signal:

Number of Timeslots	1	2	3	4
Duty Cycle	1:8	1:4	1:2.67	1:2
Time-based Ave. power compared to slotted Ave. power	- 9.03 dB	- 6.02 dB	- 4.26 dB	- 3.01 dB

10 CONDUCTED OUTPUT POWER MEASUREMENT

10.1 Test Results

1) GPRS/EDGE

Mode	Modulation	Cellular Channels			PCS Channels		
		CH 128 (dBm)	CH 190 (dBm)	CH 251 (dBm)	CH 512 (dBm)	CH 661 (dBm)	CH 810 (dBm)
GPRS (1UL slot)	GMSK	32.43	32.67	32.11	29.31	29.68	28.86
GPRS (1UL slot)-Time Ave.	GMSK	23.40	23.64	23.08	20.28	20.65	19.83
GPRS (2UL slot)	GMSK	29.98	30.31	29.8	26.69	26.82	26.75
GPRS (2 UL slot)-Time Ave.	GMSK	23.96	24.29	23.78	20.67	20.80	20.73
EDGE (2UL slot)	8PSK	24.97	25.22	25.07	24.01	24.13	23.79
EDGE (2 UL slot)-Time Ave.	8PSK	18.95	19.2	19.05	17.99	18.11	17.77

Note: Max Multi-slot class: max two uplink and two downlink.

SAR was conducted on 2 slot configuration because it has the highest time average base power.

2) WCDMA/HSDPA/HSUPA

Mode	3GPP Sub test	Band V Channels			Band II Channels			MPR
		CH 4132 (dBm)	CH 4182 (dBm)	CH 4233 (dBm)	CH 9262 (dBm)	CH 9400 (dBm)	CH 9538 (dBm)	
WCDMA	1	22.57	22.28	23.18	22.45	22.40	22.22	
HSDPA	1	22.51	22.23	22.75	22.41	22.36	22.07	0
	2	22.47	22.21	22.76	22.41	22.35	22.01	0
	3	22.47	22.23	22.71	22.4	22.36	22.06	0.5
	4	22.45	22.17	22.56	22.37	22.35	22.07	0.5
HSUPA	1	22.49	22.15	22.73	22.31	22.31	22.10	0
	2	22.45	22.23	22.69	22.33	22.3	22.11	2
	3	22.41	22.17	22.78	22.31	22.27	22.07	1
	4	22.46	22.23	22.57	22.30	22.31	22.12	2
	5	22.5	22.25	22.81	22.33	22.31	22.12	0

Note: According to KDB 172061 (PBA inquiry), since the HSPA, HSPA+, or DC-HSDPA maximum output is not more than 0.25 dB higher than WCDMA, HSPA Body SAR is not required.

11 SAR MEASUREMENT RESULTS

This page summarizes the results of the performed dosimeter evaluation. The plots with the corresponding SAR distributions, which reveal information about the location of the maximum SAR with respect to the device, could be found in Appendix E.

11.1 Test Environmental Conditions

Temperature:	22 ~ 25 C
Relative Humidity:	44 ~50 %
ATM Pressure:	101 ~ 102.5kPa

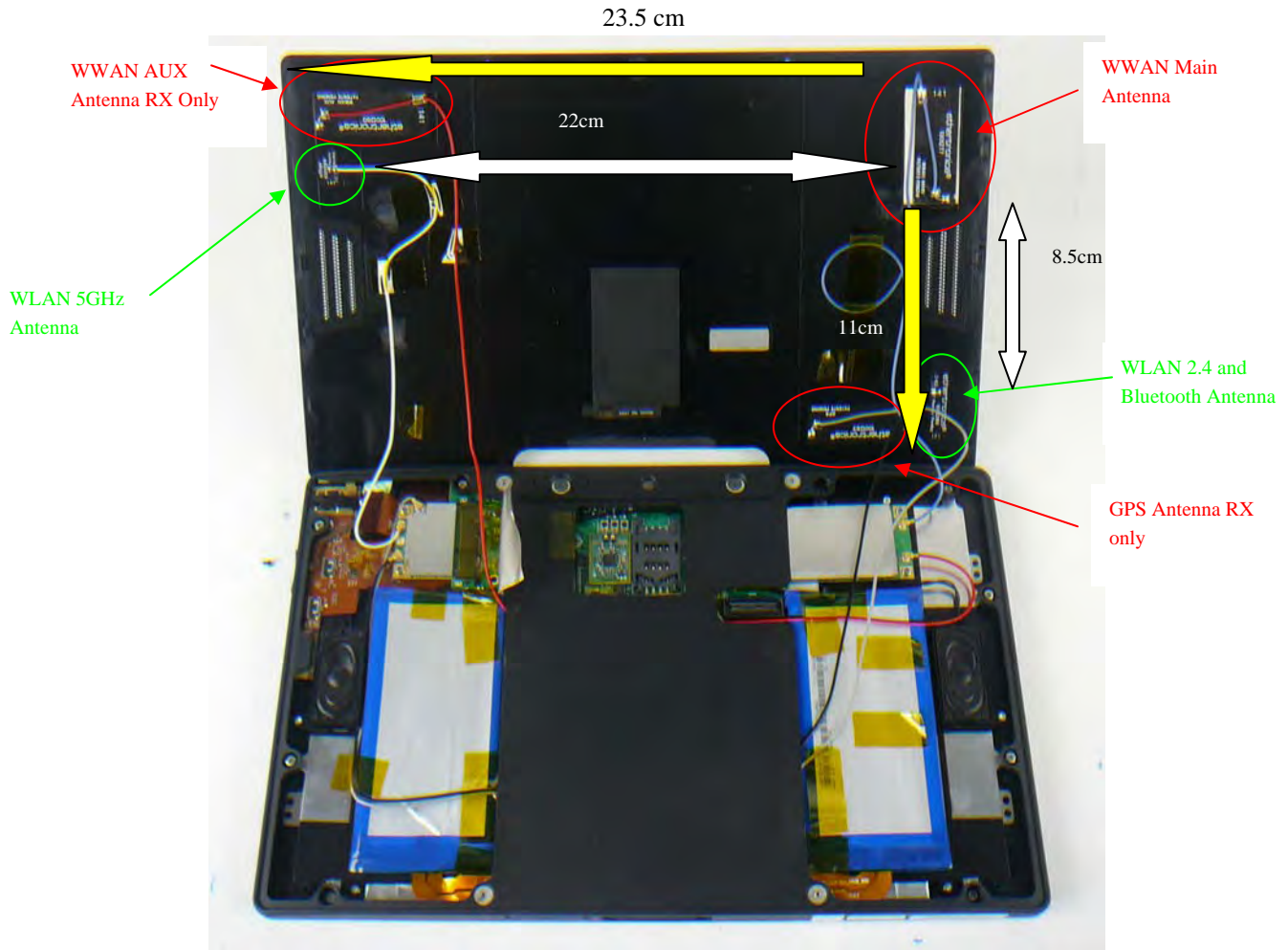
Testing was performed by Arthur Tie from 2011-12-12 to 2011-12-22 in SAR chamber.

GPRS (2 slot) 850 Band: Body Position: Back side, Bottom side, and Left side touch the Flat Phantom									
EUT Position	Channel	Frequency (MHz)	Test Type	Antenna Type	Liquid	Phantom	SAR Value (W/kg) 1g Tissue	Limit (W/kg) 1g Tissue	Plot #
Back Touch	Middle	836.6	Body	Integral	Body	Flat	0.218	1.6	1
Bottom Side Touch	Middle	836.6	Body	Integral	Body	Flat	0.020	1.6	2
Left Side Touch	Middle	836.6	Body	Integral	Body	Flat	0.017	1.6	3
WCDMA 850 Band: Body Position: Back side, Bottom side, and Left side touch the Flat Phantom									
EUT Position	Channel	Frequency (MHz)	Test Type	Antenna Type	Liquid	Phantom	SAR Value (W/kg) 1g Tissue	Limit (W/kg) 1g Tissue	Plot #
Back Touch	High	846.6	Body	Integral	Body	Flat	0.176	1.6	4
Bottom Side Touch	High	846.6	Body	Integral	Body	Flat	0.012	1.6	5
Left Side Touch	High	846.6	Body	Integral	Body	Flat	0.014	1.6	6

GPRS (2 slot) 1900 Band: Body Position: Back side, Bottom side, and Left side touch the Flat Phantom									
EUT Position	Channel	Frequency (MHz)	Test Type	Antenna Type	Liquid	Phantom	SAR Value (W/kg) 1g Tissue	Limit (W/kg) 1g Tissue	Plot #
Back Touch	Middle	1880	Body	Integral	Body	Flat	0.511	1.6	7
Bottom Side Touch	Middle	1880	Body	Integral	Body	Flat	0.049	1.6	8
Left Side Touch	Middle	1880	Body	Integral	Body	Flat	0.044	1.6	9
WCDMA 1900 Band: Body Position: Back side, Bottom side, and Left side touch the Flat Phantom									
EUT Position	Channel	Frequency (MHz)	Test Type	Antenna Type	Liquid	Phantom	SAR Value (W/kg) 1g Tissue	Limit (W/kg) 1g Tissue	Plot #
Back Touch	Low	1852.6	Body	Integral	Body	Flat	0.844	1.6	10
Back Touch	Middle	1880	Body	Integral	Body	Flat	0.829	1.6	11
Back Touch	High	1907.4	Body	Integral	Body	Flat	1.03	1.6	12
Bottom Side Touch	Low	1852.6	Body	Integral	Body	Flat	0.064	1.6	13
Left Side Touch	Low	1852.6	Body	Integral	Body	Flat	0.062	1.6	14

KDB648474 SIMULTANEOUS TRANSMISSION CONSIDERATION

The NVIDIA tablet PC (Model: E1290) contains two radio modules inside, namely WLAN/BT combo and WWAN radios, each internal radio has individual registration identifiers, the TX antenna distance between BT/WLAN and WWAN antenna is more than 5 cm (please refer to the antenna location below), therefore simultaneously transmit SAR is not required.



Orientation Exception Evaluation

The tablet computer supports all 4 screen orientations: according to the antenna location above (See the YELLOW Arrow), the antenna to right side and top side distance are all more then 10cm. So the right side touch and top side touch is not necessary. The scans in this report are all base on three positions: Back touch, bottom side touch and left side touch.

12 APPENDIX A – MEASUREMENT UNCERTAINTY

The uncertainty budget has been determined for the DASY4 measurement system and is given in the following Table.

Measurement Uncertainty for 300 MHz to 3 GHz

SASY4 Uncertainty Budget According to IEEE 1528								
Error Description	Uncertainty Value	Prob. Dist.	Div.	(c i) 1g	(c i) 10g	Std. Unc. (1g)	Std. Unc. (10g)	(v i) v _{eff}
Measurement System								
Probe Calibration	± 6.0 %	N	1	1	1	± 6.0 %	± 6.0 %	
Axial Isotropy	± 4.7 %	R	$\sqrt{3}$	0.7	0.7	± 1.9 %	± 1.9 %	
Hemispherical Isotropy	± 9.6 %	R	$\sqrt{3}$	0.7	0.7	± 3.9 %	± 3.9 %	
Boundary Effects	± 1.0 %	R	$\sqrt{3}$	1	1	± 0.6 %	± 0.6 %	
Linearity	± 4.7 %	R	$\sqrt{3}$	1	1	± 2.7 %	± 2.7 %	
System Detection Limits	± 1.0 %	R	$\sqrt{3}$	1	1	± 0.6 %	± 0.6 %	
Readout Electronics	± 0.3 %	N	1	1	1	± 0.3 %	± 0.3 %	
Response Time	± 0.8 %	R	$\sqrt{3}$	1	1	± 0.5 %	± 0.5 %	
Integration Time	± 2.6 %	R	$\sqrt{3}$	1	1	± 1.5 %	± 1.5 %	
RF Ambient Conditions	± 3.0 %	R	$\sqrt{3}$	1	1	± 1.7 %	± 1.7 %	
Probe Positioner	± 0.4 %	R	$\sqrt{3}$	1	1	± 0.2 %	± 0.2 %	
Probe Positioning	± 2.9 %	R	$\sqrt{3}$	1	1	± 1.7 %	± 1.7 %	
Max. SAR Eval.	± 1.0 %	R	$\sqrt{3}$	1	1	± 0.6 %	± 0.6 %	
Test Sample Related								
Device Positioning	± 2.9 %	N	1	1	1	± 2.9 %	± 2.9 %	145
Device Holder	± 3.6 %	N	1	1	1	± 3.6 %	± 2.6 %	5
Power Drift	± 5.0 %	R		1	1	± 2.9 %	± 2.9 %	
Phantom and Setup								
Phantom Uncertainty	± 4.0 %	R	$\sqrt{3}$	1	1	± 2.3 %	± 2.3 %	
Liquid Conductivity (Target)	± 5.0 %	R	$\sqrt{3}$	0.64	0.43	± 1.8 %	± 1.2 %	
Liquid Conductivity (meas.)	± 2.5 %	N	1	0.64	0.43	± 1.6 %	± 1.1 %	
Liquid Permittivity (Target)	± 5.0 %	R	$\sqrt{3}$	0.6	0.49	± 1.7 %	± 1.4 %	
Liquid Permittivity (Target)	± 2.5 %	N	1	0.6	0.49	± 1.5 %	± 1.0 %	
Combined Std. Uncertainty	-	-	-	-	-	± 10.8 %	± 10.6 %	330
Expanded STD Uncertainty	-	-	-	-	-	± 21.6 %	± 21.1 %	-

13 APPENDIX B – PROBE CALIBRATION CERTIFICATES

Calibration Laboratory of
 Schmid & Partner
 Engineering AG
 Zeughausstrasse 43, 8004 Zurich, Switzerland



S Schweizerischer Kalibrierdienst
C Service suisse d'étalonnage
S Servizio svizzero di taratura
 Swiss Calibration Service

Accredited by the Swiss Accreditation Service (SAS)
 The Swiss Accreditation Service is one of the signatories to the EA
 Multilateral Agreement for the recognition of calibration certificates

Accreditation No.: **SCS 108**

Client **BACL**

Certificate No: **ES3-3019_Aug11**

CALIBRATION CERTIFICATE

Object: **ES3DV2 - SN:3019**

Calibration procedure(s): **QA CAL-01.v8, QA CAL-12.v7, QA CAL-23.v4, QA CAL-25.v4
 Calibration procedure for dosimetric E-field probes**

Calibration date: **August 25, 2011**

This calibration certificate documents the traceability to national standards, which realize the physical units of measurements (SI).
 The measurements and the uncertainties with confidence probability are given on the following pages and are part of the certificate.

All calibrations have been conducted in the closed laboratory facility: environment temperature (22 ± 3)°C and humidity < 70%.

Calibration Equipment used (M&TE critical for calibration)

Primary Standards	ID	Cal Date (Certificate No.)	Scheduled Calibration
Power meter E4419B	GB41293874	31-Mar-11 (No. 217-01372)	Apr-12
Power sensor E4412A	MY41498087	31-Mar-11 (No. 217-01372)	Apr-12
Reference 3 dB Attenuator	SN: S5054 (3c)	29-Mar-11 (No. 217-01369)	Apr-12
Reference 20 dB Attenuator	SN: S5086 (20b)	29-Mar-11 (No. 217-01367)	Apr-12
Reference 30 dB Attenuator	SN: S5129 (30b)	29-Mar-11 (No. 217-01370)	Apr-12
Reference Probe ES3DV2	SN: 3013	29-Dec-10 (No. ES3-3013_Dec10)	Dec-11
DAE4	SN: 654	3-May-11 (No. DAE4-654_May11)	May-12
Secondary Standards	ID	Check Date (in house)	Scheduled Check
RF generator HP 8648C	US3642U01700	4-Aug-99 (in house check Oct-09)	In house check: Oct-11
Network Analyzer HP 8753E	US37390585	18-Oct-01 (in house check Oct-10)	In house check: Oct-11

Calibrated by:	Name Claudio Leubler	Function Laboratory Technician	Signature
Approved by:	Name Katja Pokovic	Function Technical Manager	Signature

Issued: August 27, 2011

This calibration certificate shall not be reproduced except in full without written approval of the laboratory.

Calibration Laboratory of
Schmid & Partner
Engineering AG
Zeughausstrasse 43, 8004 Zurich, Switzerland



S Schweizerischer Kalibrierdienst
S Service suisse d'étalonnage
S Servizio svizzero di taratura
S Swiss Calibration Service

Accredited by the Swiss Accreditation Service (SAS)

Accreditation No.: **SCS 108**

The Swiss Accreditation Service is one of the signatories to the EA
Multilateral Agreement for the recognition of calibration certificates

Glossary:

TSL	tissue simulating liquid
NORM _{x,y,z}	sensitivity in free space
ConvF	sensitivity in TSL / NORM _{x,y,z}
DCP	diode compression point
CF	crest factor (1/duty_cycle) of the RF signal
A, B, C	modulation dependent linearization parameters
Polarization φ	φ rotation around probe axis
Polarization ϑ	ϑ rotation around an axis that is in the plane normal to probe axis (at measurement center), i.e., $\vartheta = 0$ is normal to probe axis

Calibration is Performed According to the Following Standards:

- IEEE Std 1528-2003, "IEEE Recommended Practice for Determining the Peak Spatial-Averaged Specific Absorption Rate (SAR) in the Human Head from Wireless Communications Devices: Measurement Techniques", December 2003
- IEC 62209-1, "Procedure to measure the Specific Absorption Rate (SAR) for hand-held devices used in close proximity to the ear (frequency range of 300 MHz to 3 GHz)", February 2005

Methods Applied and Interpretation of Parameters:

- NORM_{x,y,z}**: Assessed for E-field polarization $\vartheta = 0$ ($f \leq 900$ MHz in TEM-cell; $f > 1800$ MHz: R22 waveguide). NORM_{x,y,z} are only intermediate values, i.e., the uncertainties of NORM_{x,y,z} does not affect the E^2 -field uncertainty inside TSL (see below *ConvF*).
- NORM(f)_{x,y,z}** = NORM_{x,y,z} * frequency_response (see Frequency Response Chart). This linearization is implemented in DASY4 software versions later than 4.2. The uncertainty of the frequency response is included in the stated uncertainty of *ConvF*.
- DCP_{x,y,z}**: DCP are numerical linearization parameters assessed based on the data of power sweep with CW signal (no uncertainty required). DCP does not depend on frequency nor media.
- PAR**: PAR is the Peak to Average Ratio that is not calibrated but determined based on the signal characteristics
- A_{x,y,z}; B_{x,y,z}; C_{x,y,z}; VR_{x,y,z}**: A, B, C are numerical linearization parameters assessed based on the data of power sweep for specific modulation signal. The parameters do not depend on frequency nor media. VR is the maximum calibration range expressed in RMS voltage across the diode.
- ConvF and Boundary Effect Parameters**: Assessed in flat phantom using E-field (or Temperature Transfer Standard for $f \leq 800$ MHz) and inside waveguide using analytical field distributions based on power measurements for $f > 800$ MHz. The same setups are used for assessment of the parameters applied for boundary compensation (alpha, depth) of which typical uncertainty values are given. These parameters are used in DASY4 software to improve probe accuracy close to the boundary. The sensitivity in TSL corresponds to NORM_{x,y,z} * ConvF whereby the uncertainty corresponds to that given for ConvF. A frequency dependent ConvF is used in DASY version 4.4 and higher which allows extending the validity from ± 50 MHz to ± 100 MHz.
- Spherical isotropy (3D deviation from isotropy)**: in a field of low gradients realized using a flat phantom exposed by a patch antenna.
- Sensor Offset**: The sensor offset corresponds to the offset of virtual measurement center from the probe tip (on probe axis). No tolerance required.

ES3DV2 – SN:3019

August 25, 2011

Probe ES3DV2

SN:3019

Manufactured: December 5, 2002

Calibrated: August 25, 2011

Calibrated for DASY/EASY Systems

(Note: non-compatible with DASY2 system!)

ES3DV2-SN:3019

August 25, 2011

DASY/EASY - Parameters of Probe: ES3DV2 - SN:3019

Basic Calibration Parameters

	Sensor X	Sensor Y	Sensor Z	Unc (k=2)
Norm ($\mu\text{V}/(\text{V}/\text{m})^2$) ^A	1.03	1.15	0.96	± 10.1 %
DCP (mV) ^B	101.8	103.0	105.1	

Modulation Calibration Parameters

UID	Communication System Name	PAR		A dB	B dB	C dB	VR mV	Unc ^E (k=2)
10000	CW	0.00	X	0.00	0.00	1.00	128.3	±3.0 %
			Y	0.00	0.00	1.00	147.1	
			Z	0.00	0.00	1.00	122.4	

The reported uncertainty of measurement is stated as the standard uncertainty of measurement multiplied by the coverage factor k=2, which for a normal distribution corresponds to a coverage probability of approximately 95%.

^A The uncertainties of NormX,Y,Z do not affect the E²-field uncertainty inside TSL (see Pages 5 and 6).

^B Numerical linearization parameter: uncertainty not required.

^E Uncertainty is determined using the max. deviation from linear response applying rectangular distribution and is expressed for the square of the field value.

ES3DV2– SN:3019

August 25, 2011

DASY/EASY - Parameters of Probe: ES3DV2 - SN:3019

Calibration Parameter Determined in Head Tissue Simulating Media

f (MHz) ^C	Relative Permittivity ^F	Conductivity (S/m) ^F	ConvF X	ConvF Y	ConvF Z	Alpha	Depth (mm)	Unct. (k=2)
450	43.5	0.87	6.76	6.76	6.76	0.13	1.20	± 13.4 %
835	41.5	0.90	6.22	6.22	6.22	0.76	1.09	± 12.0 %
900	41.5	0.97	6.07	6.07	6.07	0.63	1.16	± 12.0 %
1810	40.0	1.40	4.93	4.93	4.93	0.41	1.54	± 12.0 %
1900	40.0	1.40	4.87	4.87	4.87	0.45	1.40	± 12.0 %
2450	39.2	1.80	4.12	4.12	4.12	0.44	1.40	± 12.0 %

^C Frequency validity of ± 100 MHz only applies for DASY v4.4 and higher (see Page 2), else it is restricted to ± 50 MHz. The uncertainty is the RSS of the ConvF uncertainty at calibration frequency and the uncertainty for the indicated frequency band.

^F At frequencies below 3 GHz, the validity of tissue parameters (ϵ and σ) can be relaxed to ± 10% if liquid compensation formula is applied to measured SAR values. At frequencies above 3 GHz, the validity of tissue parameters (ϵ and σ) is restricted to ± 5%. The uncertainty is the RSS of the ConvF uncertainty for indicated target tissue parameters.

ES3DV2- SN:3019

August 25, 2011

DASY/EASY - Parameters of Probe: ES3DV2- SN:3019

Calibration Parameter Determined in Body Tissue Simulating Media

f (MHz) ^C	Relative Permittivity ^F	Conductivity (S/m) ^F	ConvF X	ConvF Y	ConvF Z	Alpha	Depth (mm)	Unct. (k=2)
450	56.7	0.94	7.19	7.19	7.19	0.06	1.20	± 13.4 %
835	55.2	0.97	6.19	6.19	6.19	0.76	1.11	± 12.0 %
900	55.0	1.05	6.07	6.07	6.07	0.73	1.13	± 12.0 %
1810	53.3	1.52	4.57	4.57	4.57	0.49	1.57	± 12.0 %
1900	53.3	1.52	4.38	4.38	4.38	0.41	1.81	± 12.0 %
2450	52.7	1.95	3.87	3.87	3.87	0.46	1.30	± 12.0 %

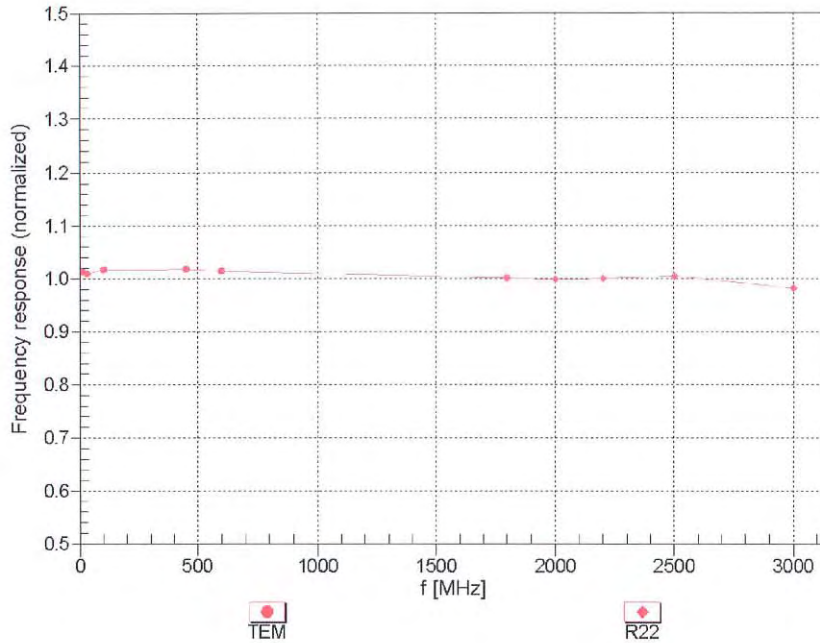
^C Frequency validity of ± 100 MHz only applies for DASY v4.4 and higher (see Page 2), else it is restricted to ± 50 MHz. The uncertainty is the RSS of the ConvF uncertainty at calibration frequency and the uncertainty for the indicated frequency band.

^F At frequencies below 3 GHz, the validity of tissue parameters (ϵ and σ) can be relaxed to ± 10% if liquid compensation formula is applied to measured SAR values. At frequencies above 3 GHz, the validity of tissue parameters (ϵ and σ) is restricted to ± 5%. The uncertainty is the RSS of the ConvF uncertainty for indicated target tissue parameters.

ES3DV2- SN:3019

August 25, 2011

Frequency Response of E-Field (TEM-Cell:ifi110 EXX, Waveguide: R22)



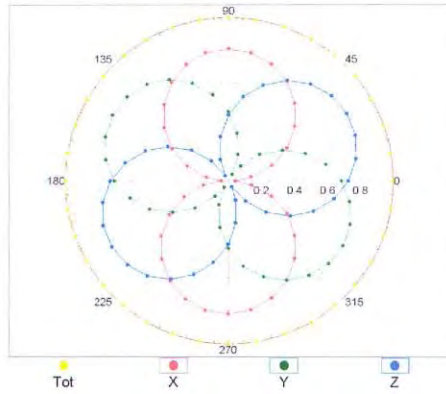
Uncertainty of Frequency Response of E-field: $\pm 6.3\%$ (k=2)

ES3DV2- SN:3019

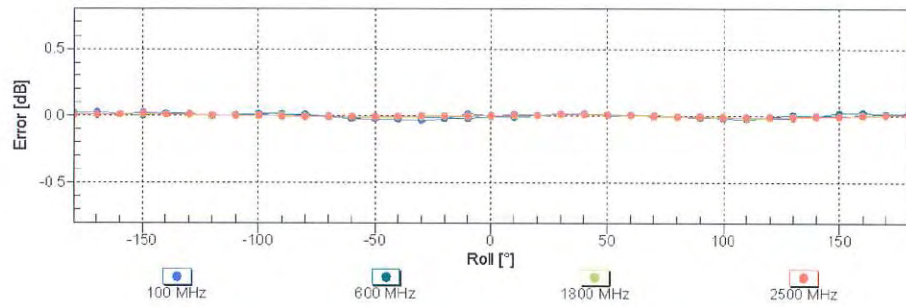
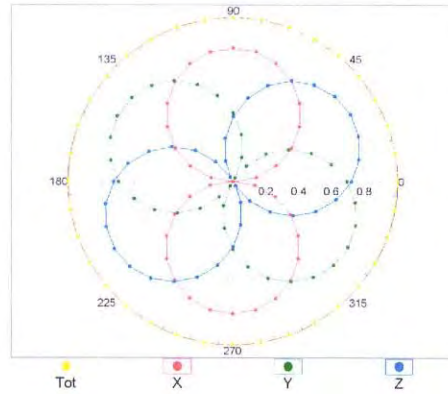
August 25, 2011

Receiving Pattern (ϕ), $\theta = 0^\circ$

f=600 MHz,TEM



f=1800 MHz,R22

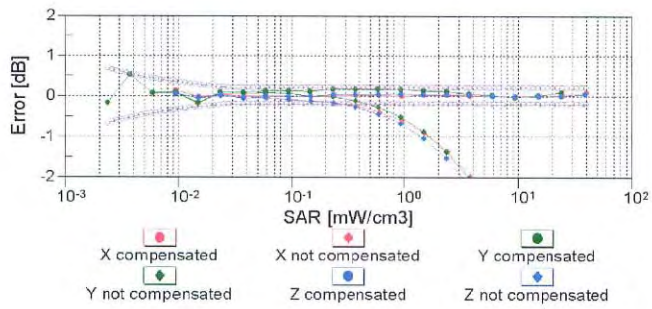
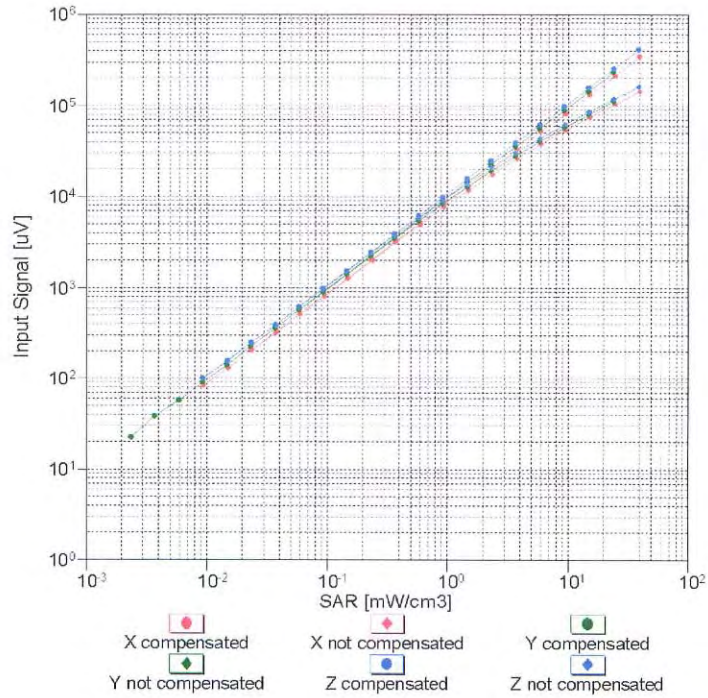


Uncertainty of Axial Isotropy Assessment: $\pm 0.5\%$ (k=2)

ES3DV2-SN:3019

August 25, 2011

Dynamic Range f(SAR_{head}) (TEM cell , f = 900 MHz)

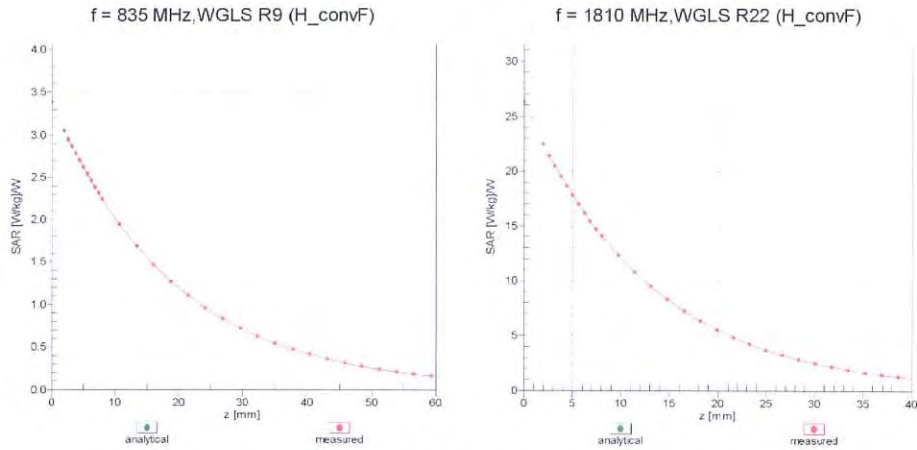


Uncertainty of Linearity Assessment: ± 0.6% (k=2)

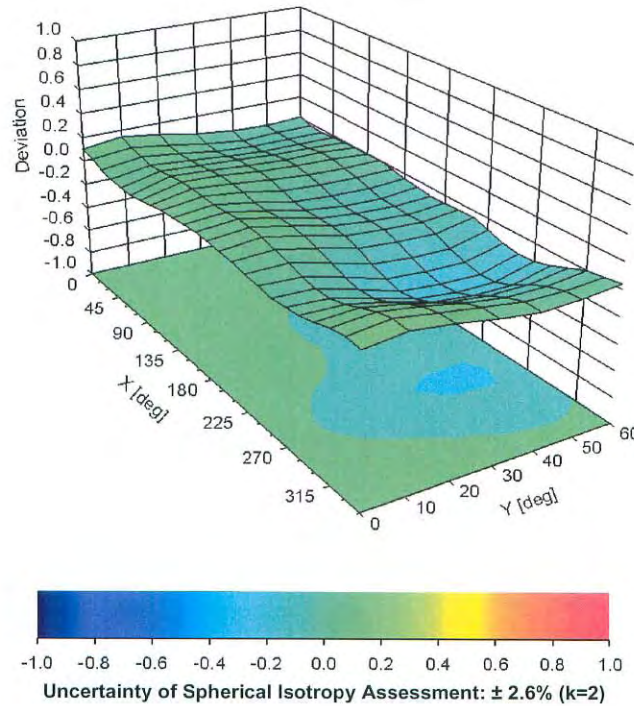
ES3DV2-SN:3019

August 25, 2011

Conversion Factor Assessment



Deviation from Isotropy in Liquid Error (ϕ, ϑ), f = 900 MHz



ES3DV2– SN:3019

August 25, 2011

DASY/EASY - Parameters of Probe: ES3DV2 - SN:3019**Other Probe Parameters**

Sensor Arrangement	Triangular
Connector Angle (°)	Not applicable
Mechanical Surface Detection Mode	enabled
Optical Surface Detection Mode	disabled
Probe Overall Length	337 mm
Probe Body Diameter	10 mm
Tip Length	10 mm
Tip Diameter	4 mm
Probe Tip to Sensor X Calibration Point	2 mm
Probe Tip to Sensor Y Calibration Point	2 mm
Probe Tip to Sensor Z Calibration Point	2 mm
Recommended Measurement Distance from Surface	3 mm

14 APPENDIX C – DIPOLE CALIBRATION CERTIFICATES

NCL CALIBRATION LABORATORIES

Calibration File No: DC-1327
Project Number: BAC-dipole-cal-5618

CERTIFICATE OF CALIBRATION

It is certified that the equipment identified below has been calibrated in the
NCL CALIBRATION LABORATORIES by qualified personnel following recognized
procedures and using transfer standards traceable to NRC/NIST.

Validation Dipole(Head and Body)

Manufacturer: APREL Laboratories

Part number: ALS-D-835-S-2

Frequency: 835 MHz

Serial No: 180-00558

Customer: Bay Area Compliance Laboratory

Calibrated: 25th August 2011
Released on: 25th August 2011

This Calibration Certificate is Incomplete Unless Accompanied with the Calibration Results Summary

Released By: _____

NCL CALIBRATION LABORATORIES

Suite 102, 303 Terry Fox Dr.
Kanata, ONTARIO
CANADA K2K 3J1

Division of APREL Lab.
TEL: (613) 435-8300
FAX: (613)435-8306

NCL Calibration Laboratories

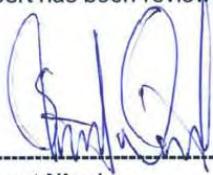
Division of APREL Laboratories.

Conditions

Dipole 180-00558 was received in good condition and a re-calibration.

Ambient Temperature of the Laboratory: 22 °C +/- 0.5°C
Temperature of the Tissue: 21 °C +/- 0.5°C

We the undersigned attest that to the best of our knowledge the calibration of this device has been accurately conducted and that all information contained within this report has been reviewed for accuracy.



Stuart Nicol



C. Teodorian

Primary Measurement Standards		
Instrument	Serial Number	Cal due date
Power meter Anritsu MA2408A	245025437	Nov.4, 2011
Power Sensor Anritsu MA2481D	103555	Nov 4, 2011
Attenuator HP 8495A (70dB) 1	944A10711	Aug.8, 2012
Network Analyzer Agilent E5071C	1334746J	Feb. 8, 2012
Secondary Measurement Standards		
Signal Generator Agilent E4438C	-506 MY55182336	June 7, 2012

This page has been reviewed for content and attested to by signature within this document.

NCL Calibration Laboratories

Division of APREL Laboratories.

Calibration Results Summary

The following results relate the Calibrated Dipole and should be used as a quick reference for the user.

Mechanical Dimensions

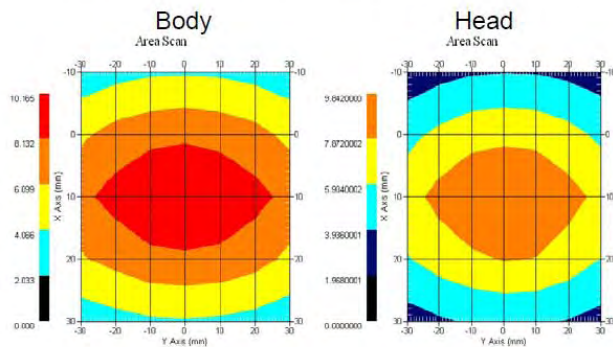
Length: 162.2 mm
Height: 89.4 mm

Electrical Specification

Tissue	Frequency	SWR:	Return Loss	Impedance
Head	835 MHz	1.0417 U	-35.395dB	49.020 Ω
Body	835 MHz	1.1177 U	-25.424dB	55.435 Ω

System Validation Results

Tissue	Frequency	1 Gram	10 Gram	Peak
Head	835 MHz	9.590	6.003	15.013
Body	835 MHz	9.684	6.263	14.23



This page has been reviewed for content and attested to by signature within this document.

NCL Calibration Laboratories

Division of APREL Laboratories.

Introduction

This Calibration Report has been produced in line with the SSI Dipole Calibration Procedure SSI-TP-018-ALSAS. The results contained within this report are for Validation Dipole 180-00558. The calibration routine consisted of a three-step process. Step 1 was a mechanical verification of the dipole to ensure that it meets the mechanical specifications. Step 2 was an Electrical Calibration for the Validation Dipole, where the SWR, Impedance, and the Return loss were assessed. Step 3 involved a System Validation using the ALSAS-10U, along with APREL E-020 130 MHz to 26 GHz E-Field Probe Serial Number 212.

References

- SSI-TP-018-ALSAS Dipole Calibration Procedure
- SSI-TP-016 Tissue Calibration Procedure
- IEEE 1528 "Recommended Practice for Determining the Peak Spatial-Average Specific Absorption Rate (SAR) in the Human Body Due to Wireless Communications Devices: Experimental Techniques"

Conditions

Dipole 180-00558 was new taken from stock.

Ambient Temperature of the Laboratory: 22 °C +/- 0.5°C
Temperature of the Tissue: 20 °C +/- 0.5°C

Dipole Calibration uncertainty

The calibration uncertainty for the dipole is made up of various parameters presented below.

Mechanical	1%
Positioning Error	1.22%
Electrical	1.7%
Tissue	2.2%
Dipole Validation	2.2%
TOTAL	8.32% (16.64% K=2)

This page has been reviewed for content and attested to by signature within this document.

NCL Calibration Laboratories

Division of APREL Laboratories.

Dipole Calibration Results**Mechanical Verification**

APREL Length	APREL Height	Measured Length	Measured Height
161.0 mm	89.8 mm	162.2 mm	89.4 mm

Tissue Type	Return Loss:	SWR:	Impedance:
Head	-35.395 dB	1.0417 U	49.020Ω
Body	-25.454 dB	1.1177 U	55.435Ω

Tissue Validation

	Dielectric constant, ϵ_r	Conductivity, σ [S/m]
Head Tissue 835MHz	41.78	0.92
Body Tissue 835MHz	56.37	0.95

This page has been reviewed for content and attested to by signature within this document.

5

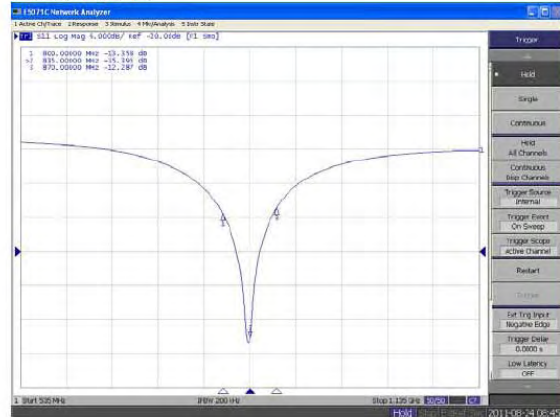
NCL Calibration Laboratories

Division of APREL Laboratories.

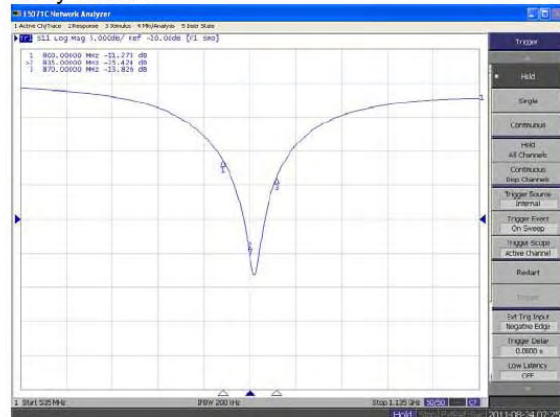
The Following Graphs are the results as displayed on the Vector Network Analyzer.

S11 Parameter Return Loss

Head Tissue



Body Tissue

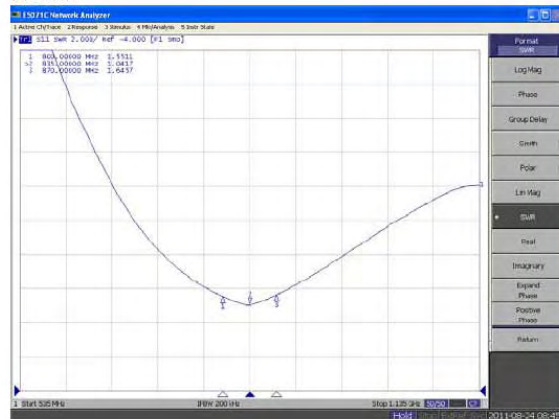


This page has been reviewed for content and attested to by signature within this document.

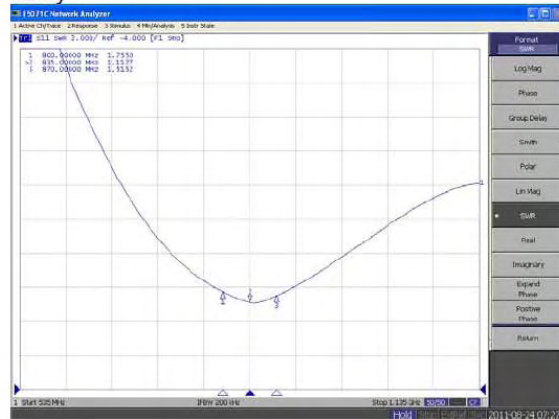
NCL Calibration Laboratories

Division of APREL Laboratories.

**SWR
Head**



Body



This page has been reviewed for content and attested to by signature within this document.

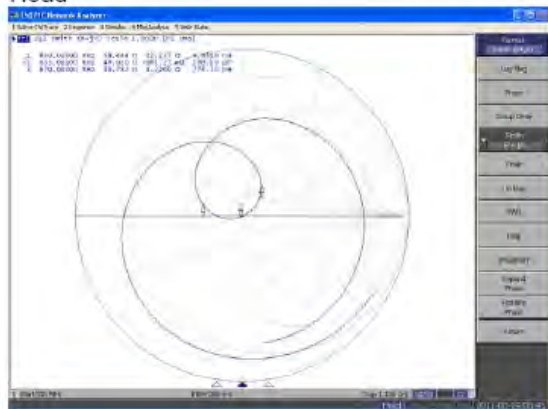
7

NCL Calibration Laboratories

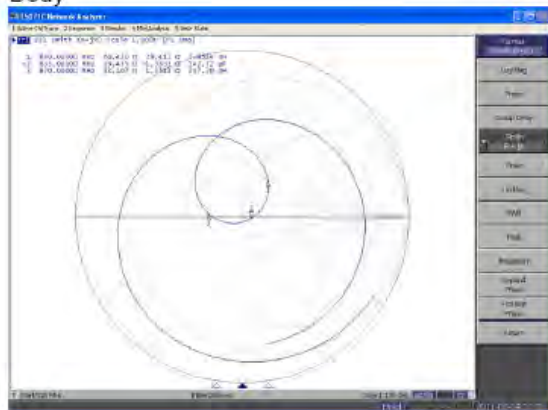
Division of APREL Laboratories.

Smith Chart Dipole Impedance

Head



Body



This page has been reviewed for content and attested to by signature within this document.

NCL Calibration Laboratories

Division of APREL Laboratories.

Test Equipment

The test equipment used during Probe Calibration, manufacturer, model number and, current calibration status are listed and located on the main APREL server R:\NCL\Calibration Equipment\Instrument List 2011.

This page has been reviewed for content and attested to by signature within this document.

9

NCL CALIBRATION LABORATORIES

Calibration File No: DC-1331
Project Number: BAC-dipole -cal-5615

CERTIFICATE OF CALIBRATION

It is certified that the equipment identified below has been calibrated in the **NCL CALIBRATION LABORATORIES** by qualified personnel following recognized procedures and using transfer standards traceable to NRC/NIST.

Validation Dipole (Head & Body)

Manufacturer: APREL Laboratories
Part number: ALS-D-1900-S-2
Frequency: 1900 MHz
Serial No: 210-00710

Customer: Bay Area Compliance Laboratory

Calibrated: 25th August, 2011
Released on: 25th August, 2011

This Calibration Certificate is incomplete unless accompanied with the Calibration Results Summary.

Released By _____

NCL CALIBRATION LABORATORIES

Suite 102, 305 Terry Fox Dr.
Kenata, ONTARIO
CANADA, K2W 3J1

Division of APREL Lab.
TEL: (613) 435-8300
FAX: (613) 435-8306

NCL Calibration Laboratories

Division of APREL Laboratories.

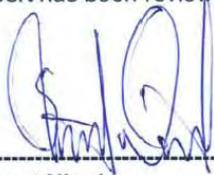
Conditions

Dipole 210-00710 was received in good condition and was a re-calibration.

Ambient Temperature of the Laboratory: 22 °C +/- 0.5°C

Temperature of the Tissue: 21 °C +/- 0.5°C

We the undersigned attest that to the best of our knowledge the calibration of this device has been accurately conducted and that all information contained within this report has been reviewed for accuracy.



Stuart Nicol



C. Teodorian

Primary Measurement Standards

Instrument	Serial Number	Cal due date
Power meter Anritsu MA2408A	245025437	Nov.4, 2011
Power Sensor Anritsu MA2481D	103555	Nov 4, 2011
Attenuator HP 8495A (70dB) 1	944A10711	Aug.8, 2012
Network Analyzer Agilent E5071C	1334746J	Feb. 8, 2012

Secondary Measurement Standards

Signal Generator Agilent E4438C	-506 MY55182336	June 7, 2012
---------------------------------	-----------------	--------------

This page has been reviewed for content and attested to by signature within this document.

NCL Calibration Laboratories

Division of APREL Laboratories.

Calibration Results Summary

The following results relate the Calibrated Dipole and should be used as a quick reference for the user.

Mechanical Dimensions

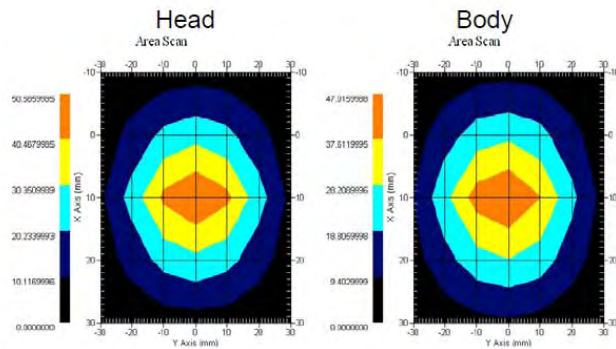
Length: 67.1 mm
Height: 38.9 mm

Electrical Specification

Tissue	Frequency	SWR:	Return Loss	Impedance
Head	1900MHz	1.0417 U	-35.395dB	49.020 Ω
Body	1900MHz	1.1177 U	-25.424dB	55.435 Ω

System Validation Results

Tissue	Frequency	1 Gram	10 Gram	Peak
Head	1900 MHz	39.648	20.311	73.365
Body	1900 MHz	39.769	20.176	75.866



This page has been reviewed for content and attested to by signature within this document.

NCL Calibration Laboratories

Division of APREL Laboratories.

Introduction

This Calibration Report has been produced in line with the SSI Dipole Calibration Procedure SSI-TP-018-ALSAS. The results contained within this report are for Validation Dipole 210-00710. The calibration routine consisted of a three-step process. Step 1 was a mechanical verification of the dipole to ensure that it meets the mechanical specifications. Step 2 was an Electrical Calibration for the Validation Dipole, where the SWR, Impedance, and the Return loss were assessed. Step 3 involved a System Validation using the ALSAS-10U, along with APREL E-020 130 MHz to 26 GHz E-Field Probe Serial Number 212.

References

SSI-TP-018-ALSAS Dipole Calibration Procedure
 SSI-TP-016 Tissue Calibration Procedure
 IEEE 1528 "Recommended Practice for Determining the Peak Spatial-Average Specific Absorption Rate (SAR) in the Human Body Due to Wireless Communications Devices: Experimental Techniques"

Conditions

Dipole 210-00710 was new taken from stock.

Ambient Temperature of the Laboratory: 22 °C +/- 0.5°C
Temperature of the Tissue: 20 °C +/- 0.5°C

Dipole Calibration uncertainty

The calibration uncertainty for the dipole is made up of various parameters presented below.

Mechanical	1%
Positioning Error	1.22%
Electrical	1.7%
Tissue	2.2%
Dipole Validation	2.2%
TOTAL	8.32% (16.64% K=2)

This page has been reviewed for content and attested to by signature within this document.

4

NCL Calibration Laboratories

Division of APREL Laboratories.

Dipole Calibration Results

Mechanical Verification

APREL Length	APREL Height	Measured Length	Measured Height
68.0 mm	39.5 mm	67.1mm	38.9 mm

Electrical Validation

Tissue Type	Return Loss:	SWR:	Impedance:
Head	-29.360 dB	1.0732 U	47.869 Ω
Body	-22.799 dB	1.1566 U	48.022 Ω

Tissue Validation

	Dielectric constant, ϵ_r	Conductivity, σ [S/m]
Head Tissue 1900MHz	38.4	1.43
Body Tissue 1900MHz	51.87	1.59

This page has been reviewed for content and attested to by signature within this document.

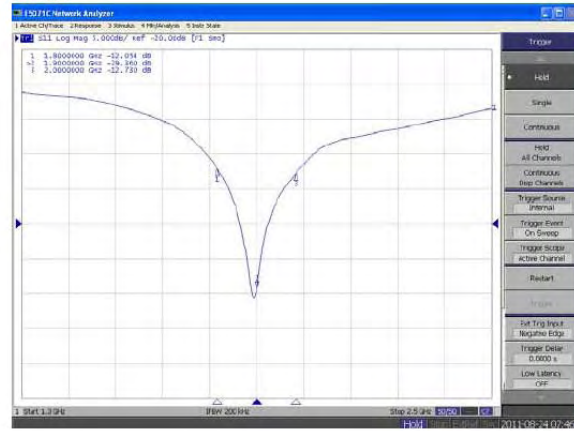
NCL Calibration Laboratories

Division of APREL Laboratories.

The Following Graphs are the results as displayed on the Vector Network Analyzer.

S11 Parameter Return Loss

Head



Body



This page has been reviewed for content and attested to by signature within this document.

NCL Calibration Laboratories

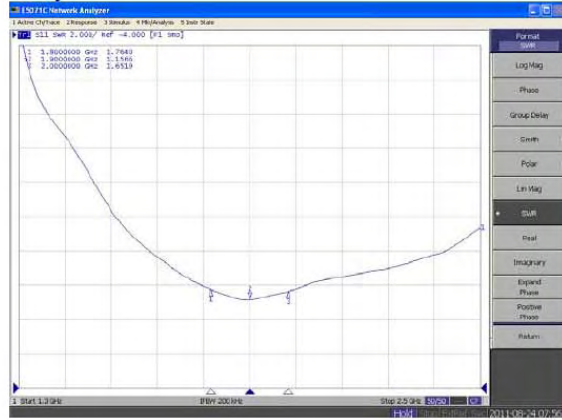
Division of APREL Laboratories.

SWR

Head



Body



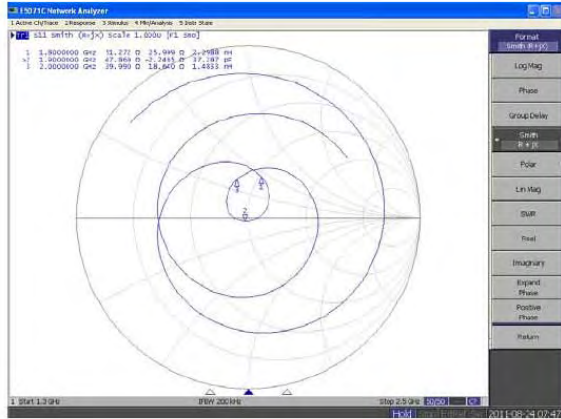
This page has been reviewed for content and attested to by signature within this document.

NCL Calibration Laboratories

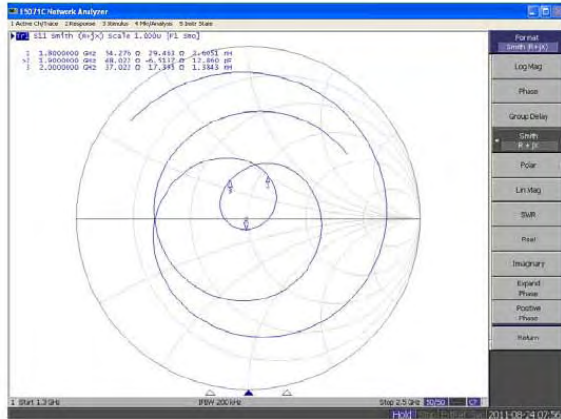
Division of APREL Laboratories.

Smith Chart Dipole Impedance

Head



Body



This page has been reviewed for content and attested to by signature within this document.

NCL Calibration Laboratories

Division of APREL Laboratories.

Test Equipment

The test equipment used during Probe Calibration, manufacturer, model number and, current calibration status are listed and located on the main APREL server R:\NCL\Calibration Equipment\Instrument List 2011

This page has been reviewed for content and attested to by signature within this document.

9

15 APPENDIX D - TEST SYSTEM VERIFICATIONS SCANS

Test Laboratory: Bay Area Compliance Lab Corp. (BACL)

System Performance Test (835 MHz, Body Tissue)

DUT: Dipole 835 MHz; Type: ALS-D-835-S-2; Serial: 180-00558

Communication System: CW; Frequency: 835 MHz; Duty Cycle: 1:1

Medium parameters used: $f = 835$ MHz; $\sigma = 0.96$ mho/m; $\epsilon_r = 55.9$; $\rho = 1000$ kg/m³

Phantom section: Flat Section

DASY4 Configuration:

- Probe: ES3DV2 - SN3019; ConvF(6.19, 6.19, 6.19); Calibrated: 8/25/2011
- Sensor-Surface: 4mm (Mechanical Surface Detection)
- Electronics: DAE3 Sn456; Calibrated: 12/7/2010
- Phantom: Flat Phantom 4.4; Type: Flat Phantom 4.4; Serial:
- Measurement SW: DASY4, V4.7 Build 80; Post processing SW: SEMCAD, V1.8 Build 186

d =15 mm, Pin = 0.5 W/Area Scan (81x121x1): Measurement grid: dx=15mm, dy=15mm

Maximum value of SAR (interpolated) = 4.62 mW/g

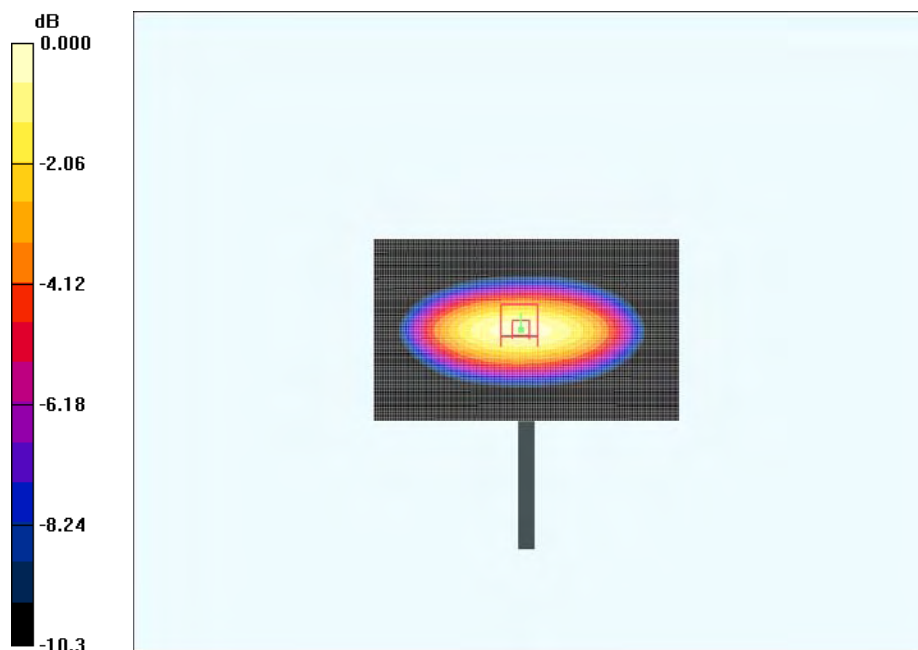
d =15 mm, Pin = 0.5 W/Zoom Scan (8x8x7)/Cube 0: Measurement grid: dx=5mm, dy=5mm, dz=5mm

Reference Value = 70.5 V/m; Power Drift = -0.038 dB

Peak SAR (extrapolated) = 6.87 W/kg

SAR (1 g) = 4.51 mW/g; SAR (10 g) = 2.95 mW/g

Maximum value of SAR (measured) = 4.75 mW/g



0 dB = 4.75mW/g

835 MHz System Validation with Body Tissue

Test Laboratory: Bay Area Compliance Lab Corp. (BACL)

System Performance Test (1900 MHz, Body Tissue)

DUT: Dipole 1900 MHz; Type: ALS-D-1900-S-2; Serial: 210-00710

Communication System: CW; Frequency: 1900 MHz; Duty Cycle: 1:1
 Medium parameters used: $f = 1900 \text{ MHz}$; $\sigma = 1.5 \text{ mho/m}$; $\epsilon_r = 52.4$; $\rho = 1000 \text{ kg/m}^3$
 Phantom section: Flat Section

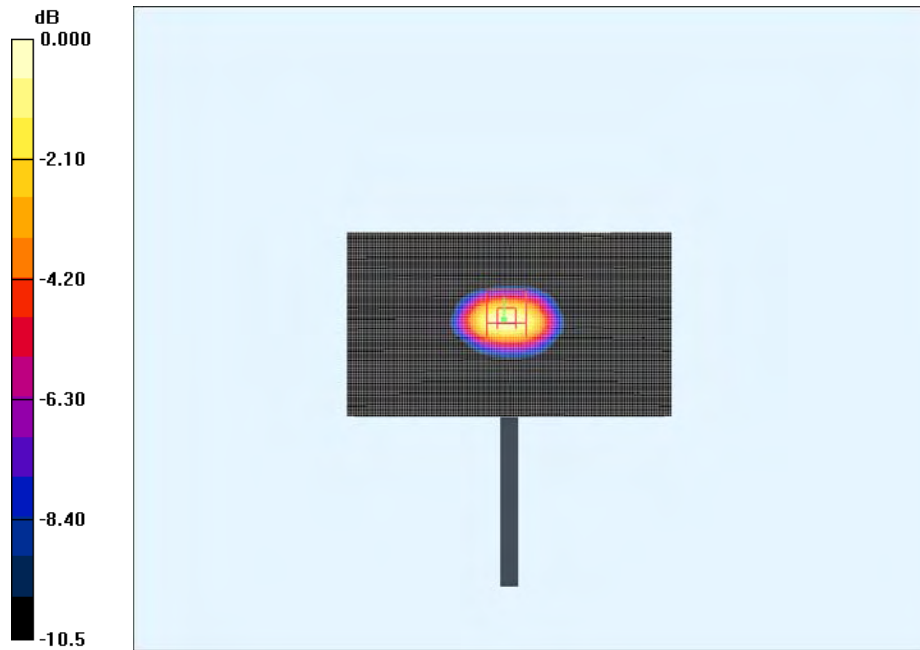
DASY4 Configuration:

- Probe: ES3DV2 - SN3019; ConvF(4.38, 4.38, 4.38); Calibrated: 8/25/2011
- Sensor-Surface: 4mm (Mechanical Surface Detection)
- Electronics: DAE3 Sn456; Calibrated: 12/7/2010
- Phantom: Flat Phantom 4.4; Type: Flat Phantom 4.4; Serial:
- Measurement SW: DASY4, V4.7 Build 80; Post processing SW: SEMCAD, V1.8 Build 186

d =10 mm, Pin = 0.5 W/Area Scan (81x121x1): Measurement grid: dx=15mm, dy=15mm
 Maximum value of SAR (interpolated) = 20.8 mW/g

d =10 mm, Pin = 0.5 W/Zoom Scan (8x8x7)/Cube 0: Measurement grid: dx=5mm, dy=5mm, dz=5mm
 Reference Value = 122.1 V/m; Power Drift = 0.231 dB
 Peak SAR (extrapolated) = 37.6 W/kg

SAR (1 g) = 20.1 mW/g; SAR (10 g) = 9.95 mW/g
 Maximum value of SAR (measured) = 23.1 mW/g



0 dB = 23.1mW/g

1900 MHz System Validation with Body Tissue

16 APPENDIX E – EUT SCAN RESULTS

Test Laboratory: Bay Area Compliance Lab Corp. (BACL)

Back Side Touch to the Phantom (Middle Channel) GPRS 850 MHz

DUT: NVIDIA Corporation; Type: Portable device; Serial: R1111165-1

Communication System: GSM 850 2 Slot; Frequency: 836.6 MHz; Duty Cycle: 1:4.15
 Medium parameters used (interpolated): $f = 836.6 \text{ MHz}$; $\sigma = 0.96 \text{ mho/m}$; $\epsilon_r = 55.9$; $\rho = 1000 \text{ kg/m}^3$
 Phantom section: Flat Section

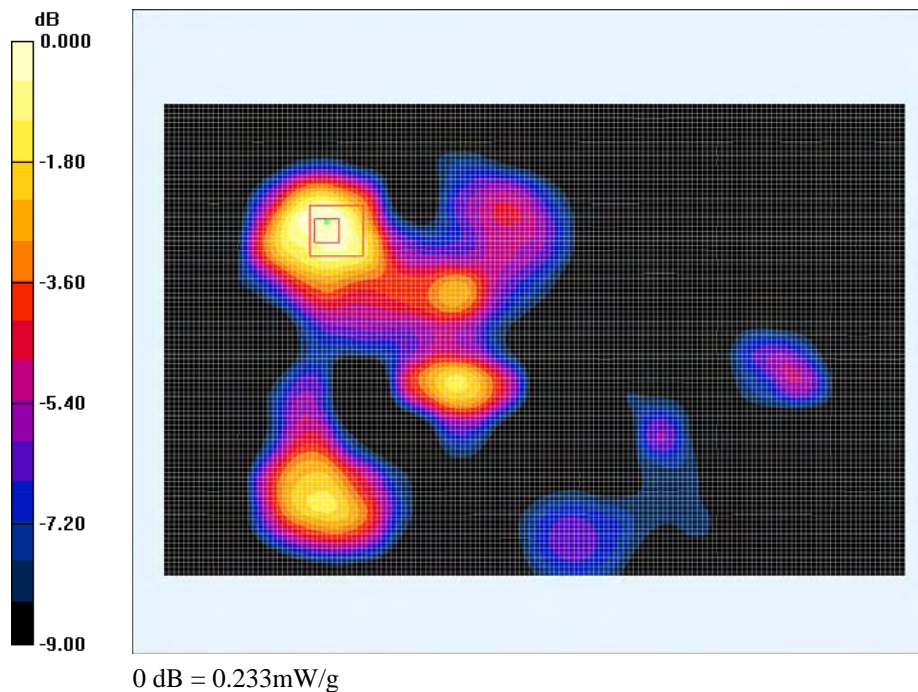
DASY4 Configuration:

- Probe: ES3DV2 - SN3019; ConvF(6.19, 6.19, 6.19); Calibrated: 8/25/2011
- Sensor-Surface: 4mm (Mechanical Surface Detection)
- Electronics: DAE3 Sn456; Calibrated: 12/7/2010
- Phantom: Flat Phantom 4.4; Type: Flat Phantom 4.4; Serial:
- Measurement SW: DASY4, V4.7 Build 80; Post processing SW: SEMCAD, V1.8 Build 186

Back Side Touch to the Phantom/Area Scan (101x151x1): Measurement grid: $dx=20\text{mm}$, $dy=20\text{mm}$
 Maximum value of SAR (interpolated) = 0.253 mW/g

Back Side Touch to the Phantom/Zoom Scan (7x7x7)/Cube 0: Measurement grid: $dx=5\text{mm}$, $dy=5\text{mm}$, $dz=5\text{mm}$
 Reference Value = 4.93 V/m; Power Drift = -0.44 dB
 Peak SAR (extrapolated) = 0.312 W/kg

SAR (1 g) = 0.218 mW/g; SAR (10 g) = 0.161 mW/g
 Maximum value of SAR (measured) = 0.233 mW/g



1

Test Laboratory: Bay Area Compliance Lab Corp. (BACL)**Bottom Side Touch to the Phantom (Middle Channel) GPRS 850 MHz****DUT: NVIDIA Corporation; Type: Portable device; Serial: R1111165-1**

Communication System: GSM 850 2 Slot; Frequency: 836.6 MHz; Duty Cycle: 1:4.15

Medium parameters used (interpolated): $f = 836.6$ MHz; $\sigma = 0.96$ mho/m; $\epsilon_r = 55.9$; $\rho = 1000$ kg/m³

Phantom section: Flat Section

DASY4 Configuration:

- Probe: ES3DV2 - SN3019; ConvF(6.19, 6.19, 6.19); Calibrated: 8/25/2011
- Sensor-Surface: 4mm (Mechanical Surface Detection)
- Electronics: DAE3 Sn456; Calibrated: 12/7/2010
- Phantom: Flat Phantom 4.4; Type: Flat Phantom 4.4; Serial:
- Measurement SW: DASY4, V4.7 Build 80; Post processing SW: SEMCAD, V1.8 Build 186

Bottom Side Touch to the Phantom/Area Scan (31x151x1): Measurement grid: dx=20mm, dy=20mm

Maximum value of SAR (interpolated) = 0.020 mW/g

Bottom Side Touch to the Phantom/Zoom Scan (7x7x7)/Cube 0: Measurement grid: dx=5mm, dy=5mm,

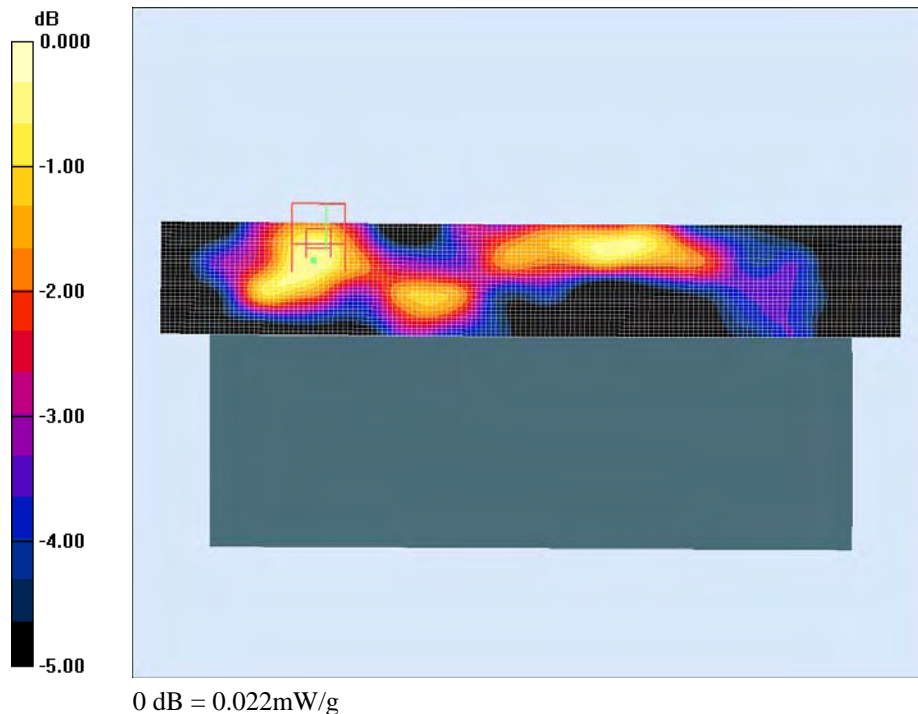
dz=5mm

Reference Value = 3.27 V/m; Power Drift = -0.837 dB

Peak SAR (extrapolated) = 0.026 W/kg

SAR (1 g) = 0.020 mW/g; SAR (10 g) = 0.014 mW/g

Maximum value of SAR (measured) = 0.022 mW/g



2

Test Laboratory: Bay Area Compliance Lab Corp. (BACL)**Left Side Touch to the Phantom (Middle Channel) GPRS 850 MHz****DUT: NVIDIA Corporation; Type: Portable device; Serial: R1111165-1**

Communication System: GSM 850 2 Slot; Frequency: 836.6 MHz; Duty Cycle: 1:4.15

Medium parameters used (interpolated): $f = 836.6$ MHz; $\sigma = 0.96$ mho/m; $\epsilon_r = 55.9$; $\rho = 1000$ kg/m³

Phantom section: Flat Section

DASY4 Configuration:

- Probe: ES3DV2 - SN3019; ConvF(6.19, 6.19, 6.19); Calibrated: 8/25/2011
- Sensor-Surface: 4mm (Mechanical Surface Detection)
- Electronics: DAE3 Sn456; Calibrated: 12/7/2010
- Phantom: Flat Phantom 4.4; Type: Flat Phantom 4.4; Serial:
- Measurement SW: DASY4, V4.7 Build 80; Post processing SW: SEMCAD, V1.8 Build 186

Left Side Touch to the Phantom/Area Scan (31x91x1): Measurement grid: dx=20mm, dy=20mm

Maximum value of SAR (interpolated) = 0.021 mW/g

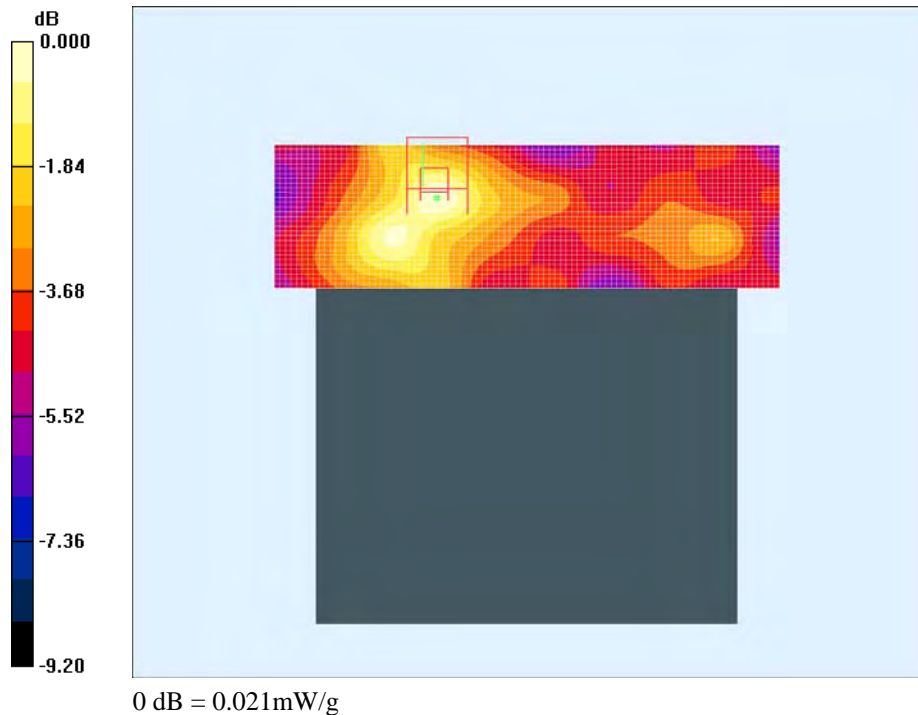
Left Side Touch to the Phantom/Zoom Scan (7x7x7)/Cube 0: Measurement grid: dx=5mm, dy=5mm, dz=5mm

Reference Value = 3.05 V/m; Power Drift = -1.81 dB

Peak SAR (extrapolated) = 0.027 W/kg

SAR (1 g) = 0.017 mW/g; SAR (10 g) = 0.014 mW/g

Maximum value of SAR (measured) = 0.021 mW/g



3

Test Laboratory: Bay Area Compliance Lab Corp. (BACL)

Back Side Touch to the Phantom (High Channel) WCDMA 850 MHz

DUT: NVIDIA Corporation; Type: Portable device; Serial: R1111165-1

Communication System: WCDMA-850MHz; Frequency: 846.6 MHz; Duty Cycle: 1:1
 Medium parameters used (interpolated): $f = 846.6 \text{ MHz}$; $\sigma = 0.969 \text{ mho/m}$; $\epsilon_r = 55.8$; $\rho = 1000 \text{ kg/m}^3$
 Phantom section: Flat Section

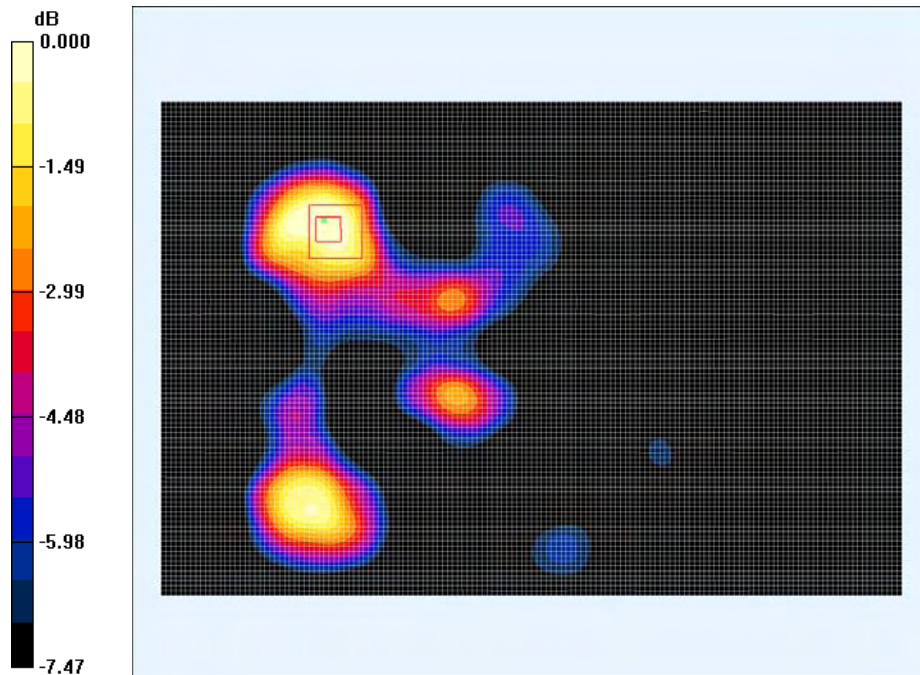
DASY4 Configuration:

- Probe: ES3DV2 - SN3019; ConvF(6.19, 6.19, 6.19); Calibrated: 8/25/2011
- Sensor-Surface: 4mm (Mechanical Surface Detection)
- Electronics: DAE3 Sn456; Calibrated: 12/7/2010
- Phantom: Flat Phantom 4.4; Type: Flat Phantom 4.4; Serial:
- Measurement SW: DASY4, V4.7 Build 80; Postprocessing SW: SEMCAD, V1.8 Build 186

Back Side Touch to the Phantom/Area Scan (101x151x1): Measurement grid: $dx=20\text{mm}$, $dy=20\text{mm}$
 Maximum value of SAR (interpolated) = 0.222 mW/g

Back Side Touch to the Phantom/Zoom Scan (7x7x7)/Cube 0: Measurement grid: $dx=5\text{mm}$, $dy=5\text{mm}$, $dz=5\text{mm}$
 Reference Value = 3.90 V/m; Power Drift = -1.44 dB
 Peak SAR (extrapolated) = 0.227 W/kg

SAR (1 g) = 0.176 mW/g; SAR (10 g) = 0.133 mW/g
 Maximum value of SAR (measured) = 0.187 mW/g



Test Laboratory: Bay Area Compliance Lab Corp. (BACL)

Bottom Side Touch to the Phantom (High Channel) WCDMA 850 MHz

DUT: NVIDIA Corporation; Type: Portable device; Serial: R1111165-1

Communication System: WCDMA-850MHz; Frequency: 846.6 MHz; Duty Cycle: 1:1
 Medium parameters used (interpolated): $f = 846.6 \text{ MHz}$; $\sigma = 0.969 \text{ mho/m}$; $\epsilon_r = 55.8$; $\rho = 1000 \text{ kg/m}^3$
 Phantom section: Flat Section

DASY4 Configuration:

- Probe: ES3DV2 - SN3019; ConvF(6.19, 6.19, 6.19); Calibrated: 8/25/2011
- Sensor-Surface: 4mm (Mechanical Surface Detection)
- Electronics: DAE3 Sn456; Calibrated: 12/7/2010
- Phantom: Flat Phantom 4.4; Type: Flat Phantom 4.4; Serial:
- Measurement SW: DASY4, V4.7 Build 80; Post processing SW: SEMCAD, V1.8 Build 186

Bottom Side Touch to the Phantom/Area Scan (31x151x1): Measurement grid: $dx=20\text{mm}$, $dy=20\text{mm}$
 Maximum value of SAR (interpolated) = 0.014 mW/g

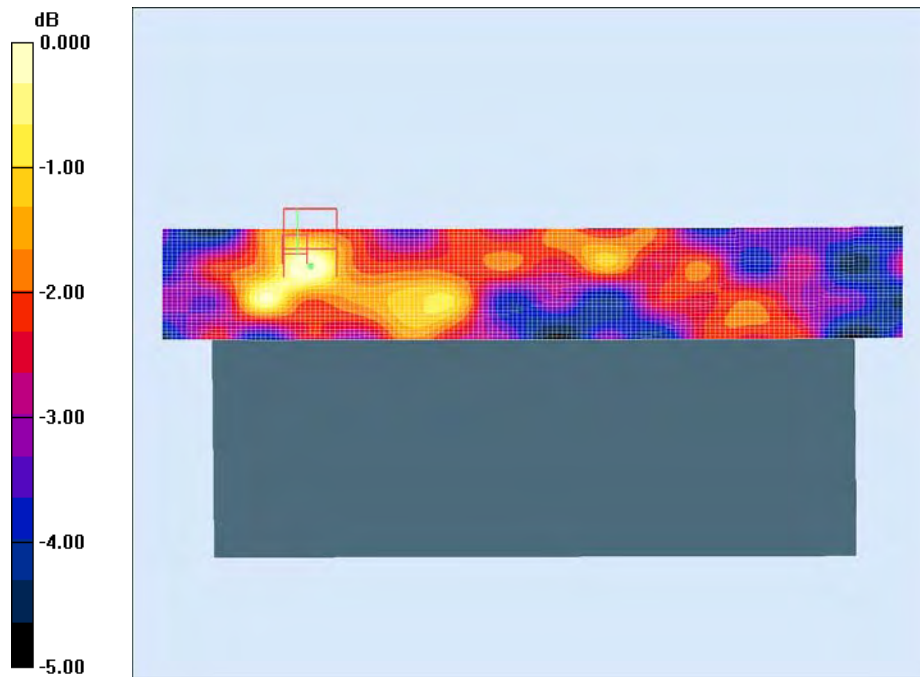
Bottom Side Touch to the Phantom/Zoom Scan (7x7x7)/Cube 0: Measurement grid: $dx=5\text{mm}$, $dy=5\text{mm}$,
 $dz=5\text{mm}$

Reference Value = 2.44 V/m; Power Drift = 1.71 dB

Peak SAR (extrapolated) = 0.029 W/kg

SAR (1 g) = 0.012 mW/g; SAR (10 g) = 0.00945 mW/g

Maximum value of SAR (measured) = 0.013 mW/g



5

Test Laboratory: Bay Area Compliance Lab Corp. (BACL)

Left Side Touch to the Phantom (High Channel) WCDMA 850 MHz

DUT: NVIDIA Corporation; Type: Portable device; Serial: R1111165-1

Communication System: WCDMA-850MHz; Frequency: 846.6 MHz; Duty Cycle: 1:1
 Medium parameters used (interpolated): $f = 846.6 \text{ MHz}$; $\sigma = 0.969 \text{ mho/m}$; $\epsilon_r = 55.8$; $\rho = 1000 \text{ kg/m}^3$
 Phantom section: Flat Section

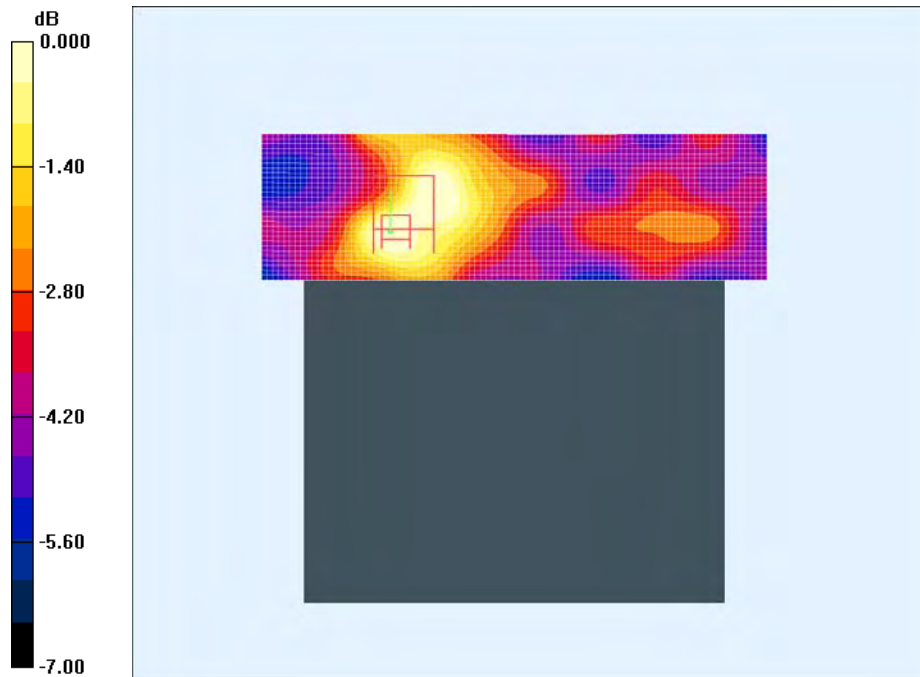
DASY4 Configuration:

- Probe: ES3DV2 - SN3019; ConvF(6.19, 6.19, 6.19); Calibrated: 8/25/2011
- Sensor-Surface: 4mm (Mechanical Surface Detection)
- Electronics: DAE3 Sn456; Calibrated: 12/7/2010
- Phantom: Flat Phantom 4.4; Type: Flat Phantom 4.4; Serial:
- Measurement SW: DASY4, V4.7 Build 80; Post processing SW: SEMCAD, V1.8 Build 186

Left Side Touch to the Phantom/Area Scan (31x91x1): Measurement grid: $dx=20\text{mm}$, $dy=20\text{mm}$.
 Maximum value of SAR (interpolated) = 0.017 mW/g

Left Side Touch to the Phantom/Zoom Scan (7x7x7)/Cube 0: Measurement grid: $dx=5\text{mm}$, $dy=5\text{mm}$, $dz=5\text{mm}$
 Reference Value = 2.83 V/m; Power Drift = -1.15 dB
 Peak SAR (extrapolated) = 0.038 W/kg

SAR (1 g) = 0.014 mW/g; SAR (10 g) = 0.00735 mW/g
 Maximum value of SAR (measured) = 0.016 mW/g



Test Laboratory: Bay Area Compliance Lab Corp. (BACL)**Back Side Touch to the Phantom (Middle Channel) GPRS 1900 MHz****DUT: NVIDIA Corporation; Type: Portable device; Serial: R1111165-1**

Communication System: PCS 1900 2 Slots; Frequency: 1880 MHz; Duty Cycle: 1:4.15

Medium parameters used (interpolated): $f = 1880$ MHz; $\sigma = 1.57$ mho/m; $\epsilon_r = 51.1$; $\rho = 1000$ kg/m³

Phantom section: Flat Section

DASY4 Configuration:

- Probe: ES3DV2 - SN3019; ConvF(4.38, 4.38, 4.38); Calibrated: 8/25/2011
- Sensor-Surface: 4mm (Mechanical Surface Detection)
- Electronics: DAE3 Sn456; Calibrated: 12/7/2010
- Phantom: Flat Phantom 4.4; Type: Flat Phantom 4.4; Serial:
- Measurement SW: DASY4, V4.7 Build 80; Post processing SW: SEMCAD, V1.8 Build 186

Back Side Touch to the Phantom/Area Scan (101x151x1): Measurement grid: dx=20mm, dy=20mm

Maximum value of SAR (interpolated) = 0.589 mW/g

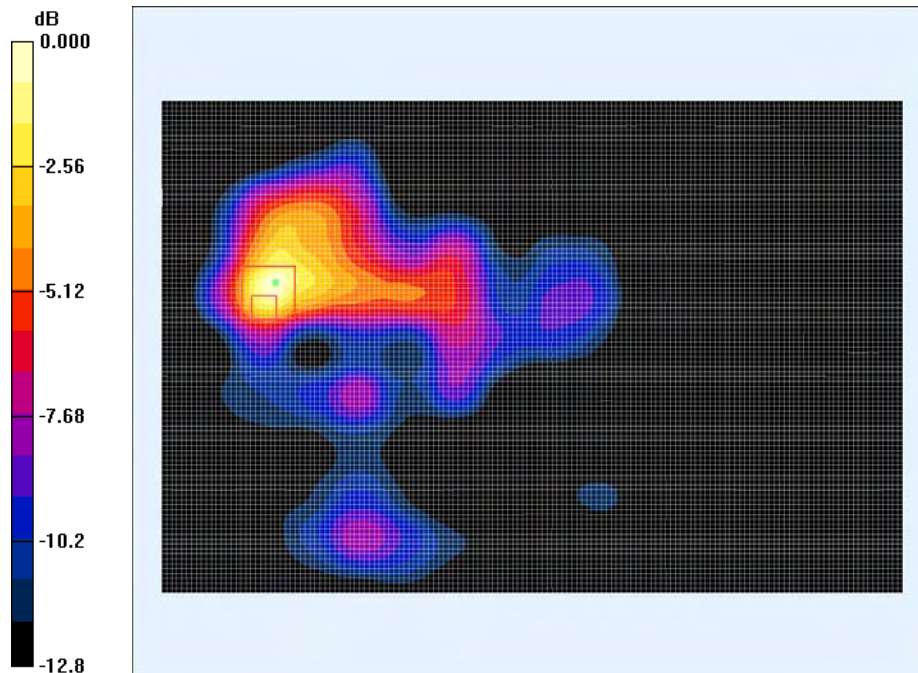
Back Side Touch to the Phantom/Zoom Scan (7x7x7)/Cube 0: Measurement grid: dx=5mm, dy=5mm, dz=5mm

Reference Value = 5.99 V/m; Power Drift = 0.131 dB

Peak SAR (extrapolated) = 1.07 W/kg

SAR (1 g) = 0.511 mW/g; SAR (10 g) = 0.222 mW/g

Maximum value of SAR (measured) = 0.616 mW/g



0 dB = 0.616mW/g

7

Test Laboratory: Bay Area Compliance Lab Corp. (BACL)

Bottom Side Touch to the Phantom (Middle Channel) GPRS 1900 MHz

DUT: NVIDIA Corporation; Type: Portable device; Serial: R1111165-1

Communication System: PCS 1900 2 Slots; Frequency: 1880 MHz; Duty Cycle: 1:4.15
 Medium parameters used (interpolated): $f = 1880 \text{ MHz}$; $\sigma = 1.57 \text{ mho/m}$; $\epsilon_r = 51.1$; $\rho = 1000 \text{ kg/m}^3$
 Phantom section: Flat Section

DASY4 Configuration:

- Probe: ES3DV2 - SN3019; ConvF(4.38, 4.38, 4.38); Calibrated: 8/25/2011
- Sensor-Surface: 4mm (Mechanical Surface Detection)
- Electronics: DAE3 Sn456; Calibrated: 12/7/2010
- Phantom: Flat Phantom 4.4; Type: Flat Phantom 4.4; Serial:
- Measurement SW: DASY4, V4.7 Build 80; Post processing SW: SEMCAD, V1.8 Build 186

Bottom Side Touch to the Phantom/Area Scan (31x151x1): Measurement grid: $dx=20\text{mm}$, $dy=20\text{mm}$
 Maximum value of SAR (interpolated) = 0.063 mW/g

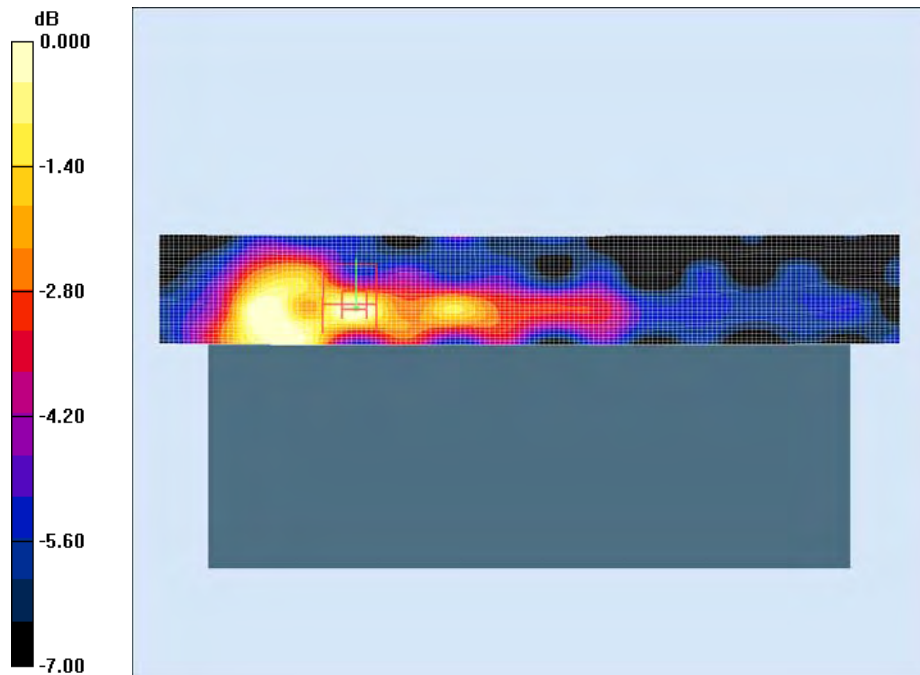
Bottom Side Touch to the Phantom/Zoom Scan (7x7x7)/Cube 0: Measurement grid: $dx=5\text{mm}$, $dy=5\text{mm}$,
 $dz=5\text{mm}$

Reference Value = 2.89 V/m; Power Drift = -0.289 dB

Peak SAR (extrapolated) = 0.108 W/kg

SAR (1 g) = 0.049 mW/g; SAR (10 g) = 0.027 mW/g

Maximum value of SAR (measured) = 0.055 mW/g



Test Laboratory: Bay Area Compliance Lab Corp. (BACL)

Left Side Touch to the Phantom (Middle Channel) GPRS 1900 MHz

DUT: NVIDIA Corporation; Type: Portable device; Serial: R1111165-1

Communication System: PCS 1900 2 Slots; Frequency: 1880 MHz; Duty Cycle: 1:4.15
 Medium parameters used (interpolated): $f = 1880 \text{ MHz}$; $\sigma = 1.57 \text{ mho/m}$; $\epsilon_r = 51.1$; $\rho = 1000 \text{ kg/m}^3$
 Phantom section: Flat Section

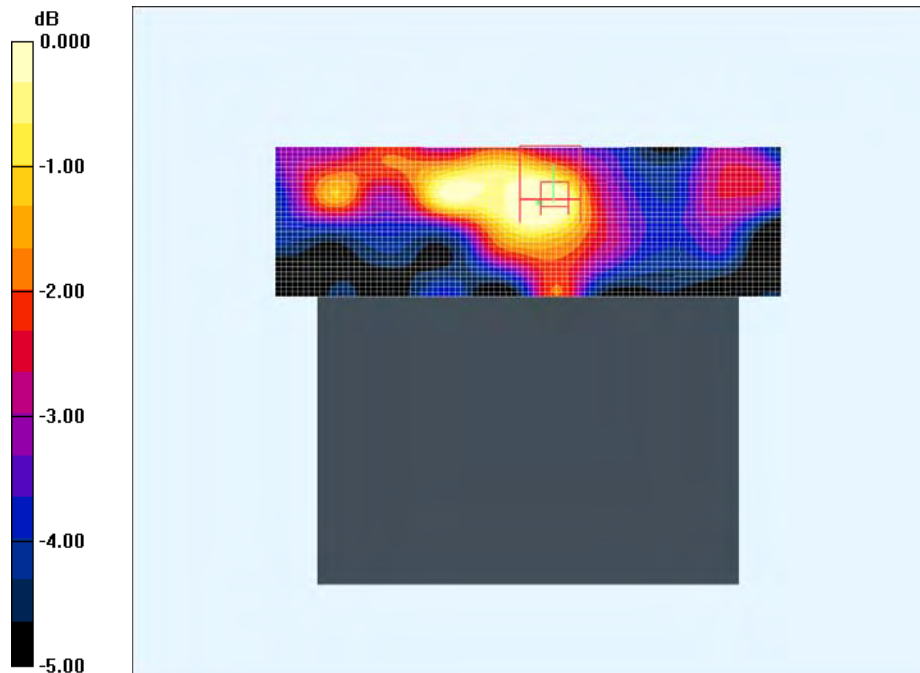
DASY4 Configuration:

- Probe: ES3DV2 - SN3019; ConvF(4.38, 4.38, 4.38); Calibrated: 8/25/2011
- Sensor-Surface: 4mm (Mechanical Surface Detection)
- Electronics: DAE3 Sn456; Calibrated: 12/7/2010
- Phantom: Flat Phantom 4.4; Type: Flat Phantom 4.4; Serial:
- Measurement SW: DASY4, V4.7 Build 80; Post processing SW: SEMCAD, V1.8 Build 186

Left Side Touch to the Phantom/Area Scan (31x91x1): Measurement grid: $dx=20\text{mm}$, $dy=20\text{mm}$
 Maximum value of SAR (interpolated) = 0.055 mW/g

Left Side Touch to the Phantom/Zoom Scan (7x7x7)/Cube 0: Measurement grid: $dx=5\text{mm}$, $dy=5\text{mm}$, $dz=5\text{mm}$
 Reference Value = 4.60 V/m; Power Drift = -0.914 dB
 Peak SAR (extrapolated) = 0.066 W/kg

SAR (1 g) = 0.044 mW/g; SAR (10 g) = 0.029 mW/g
 Maximum value of SAR (measured) = 0.048 mW/g



0 dB = 0.048mW/g

Test Laboratory: Bay Area Compliance Lab Corp. (BACL)**Back Side Touch to the Phantom (Low Channel) WCDMA 1900 MHz****DUT: NVIDIA Corporation; Type: Portable device; Serial: R1111165-1**

Communication System: WCDMA-1900MHz; Frequency: 1852.6 MHz; Duty Cycle: 1:1

Medium parameters used (interpolated): $f = 1852.6$ MHz; $\sigma = 1.53$ mho/m; $\epsilon_r = 51.2$; $\rho = 1000$ kg/m³

Phantom section: Flat Section

DASY4 Configuration:

- Probe: ES3DV2 - SN3019; ConvF(4.38, 4.38, 4.38); Calibrated: 8/25/2011
- Sensor-Surface: 4mm (Mechanical Surface Detection)
- Electronics: DAE3 Sn456; Calibrated: 12/7/2010
- Phantom: Flat Phantom 4.4; Type: Flat Phantom 4.4; Serial:
- Measurement SW: DASY4, V4.7 Build 80; Post processing SW: SEMCAD, V1.8 Build 186

Back Side Touch to the Phantom/Area Scan (101x151x1): Measurement grid: dx=20mm, dy=20mm

Maximum value of SAR (interpolated) = 1.25 mW/g

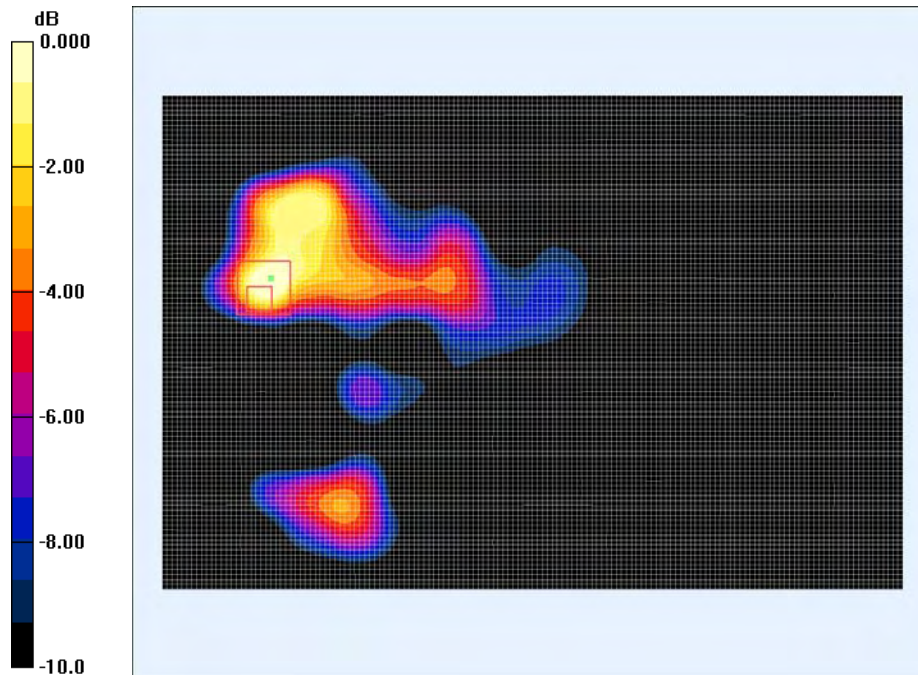
Back Side Touch to the Phantom/Zoom Scan (7x7x7)/Cube 0: Measurement grid: dx=5mm, dy=5mm, dz=5mm

Reference Value = 8.88 V/m; Power Drift = 0.209 dB

Peak SAR (extrapolated) = 1.63 W/kg

SAR (1 g) = 0.844 mW/g; SAR (10 g) = 0.398 mW/g

Maximum value of SAR (measured) = 0.991 mW/g



0 dB = 0.991mW/g

10

Test Laboratory: Bay Area Compliance Lab Corp. (BACL)**Back Side Touch to the Phantom (Middle Channel) WCDMA 1900 MHz****DUT: NVIDIA Corporation; Type: Portable device; Serial: R1111165-1**

Communication System: WCDMA-1900MHz; Frequency: 1880 MHz; Duty Cycle: 1:1
 Medium parameters used (interpolated): $f = 1880$ MHz; $\sigma = 1.57$ mho/m; $\epsilon_r = 51.1$; $\rho = 1000$ kg/m³
 Phantom section: Flat Section

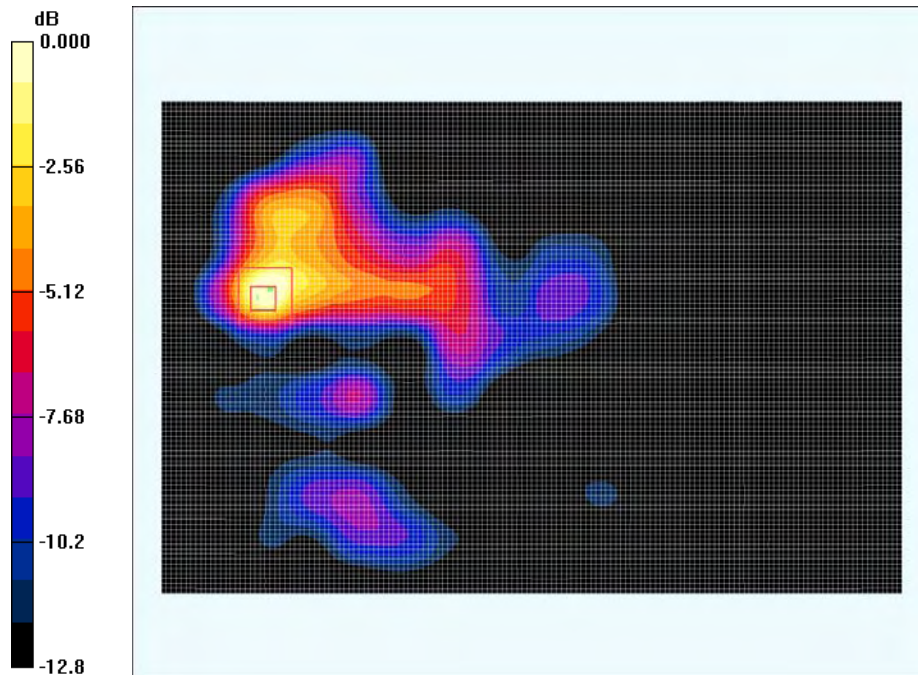
DASY4 Configuration:

- Probe: ES3DV2 - SN3019; ConvF(4.38, 4.38, 4.38); Calibrated: 8/25/2011
- Sensor-Surface: 4mm (Mechanical Surface Detection)
- Electronics: DAE3 Sn456; Calibrated: 12/7/2010
- Phantom: Flat Phantom 4.4; Type: Flat Phantom 4.4; Serial:
- Measurement SW: DASY4, V4.7 Build 80; Post processing SW: SEMCAD, V1.8 Build 186

Back Side Touch to the Phantom/Area Scan (101x151x1): Measurement grid: dx=20mm, dy=20mm
 Maximum value of SAR (interpolated) = 1.17 mW/g

Back Side Touch to the Phantom/Zoom Scan (7x7x7)/Cube 0: Measurement grid: dx=5mm, dy=5mm, dz=5mm
 Reference Value = 7.85 V/m; Power Drift = -0.569 dB
 Peak SAR (extrapolated) = 1.67 W/kg

SAR (1 g) = 0.829 mW/g; SAR (10 g) = 0.373 mW/g
 Maximum value of SAR (measured) = 0.976 mW/g



0 dB = 0.976mW/g

Test Laboratory: Bay Area Compliance Lab Corp. (BACL)**Back Side Touch to the Phantom (High Channel) WCDMA 1900 MHz****DUT: NVIDIA Corporation; Type: Portable device; Serial: R1111165-1**

Communication System: WCDMA-1900MHz; Frequency: 1907.4 MHz; Duty Cycle: 1:1

Medium parameters used (interpolated): $f = 1907.4$ MHz; $\sigma = 1.58$ mho/m; $\epsilon_r = 51.4$; $\rho = 1000$ kg/m³

Phantom section: Flat Section

DASY4 Configuration:

- Probe: ES3DV2 - SN3019; ConvF(4.38, 4.38, 4.38); Calibrated: 8/25/2011
- Sensor-Surface: 4mm (Mechanical Surface Detection)
- Electronics: DAE3 Sn456; Calibrated: 12/7/2010
- Phantom: Flat Phantom 4.4; Type: Flat Phantom 4.4; Serial:
- Measurement SW: DASY4, V4.7 Build 80; Post processing SW: SEMCAD, V1.8 Build 186

Back Side Touch to the Phantom/Area Scan (101x151x1): Measurement grid: dx=20mm, dy=20mm

Maximum value of SAR (interpolated) = 1.34 mW/g

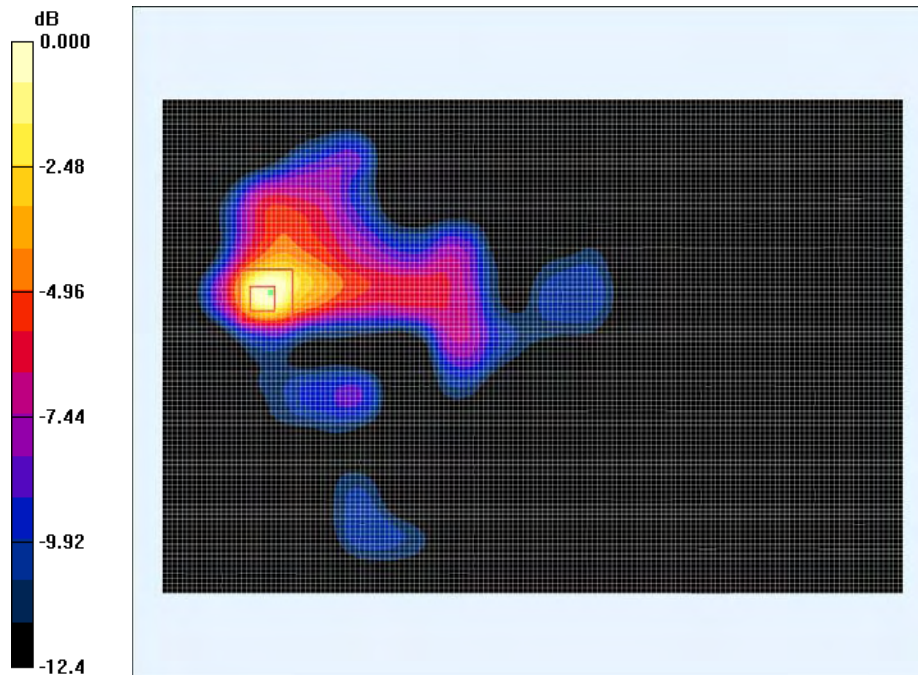
Back Side Touch to the Phantom/Zoom Scan (7x7x7)/Cube 0: Measurement grid: dx=5mm, dy=5mm, dz=5mm

Reference Value = 7.61 V/m; Power Drift = -0.350 dB

Peak SAR (extrapolated) = 2.28 W/kg

SAR (1 g) = 1.03 mW/g; SAR (10 g) = 0.452 mW/g

Maximum value of SAR (measured) = 1.19 mW/g



0 dB = 1.19mW/g

12

Test Laboratory: Bay Area Compliance Lab Corp. (BACL)

Bottom Side Touch to the Phantom (Low Channel) WCDMA 1900 MHz

DUT: NVIDIA Corporation; Type: Portable device; Serial: R1111165-1

Communication System: WCDMA-1900MHz; Frequency: 1852.6 MHz; Duty Cycle: 1:1
 Medium parameters used (interpolated): $f = 1852.6 \text{ MHz}$; $\sigma = 1.53 \text{ mho/m}$; $\epsilon_r = 51.2$; $\rho = 1000 \text{ kg/m}^3$
 Phantom section: Flat Section

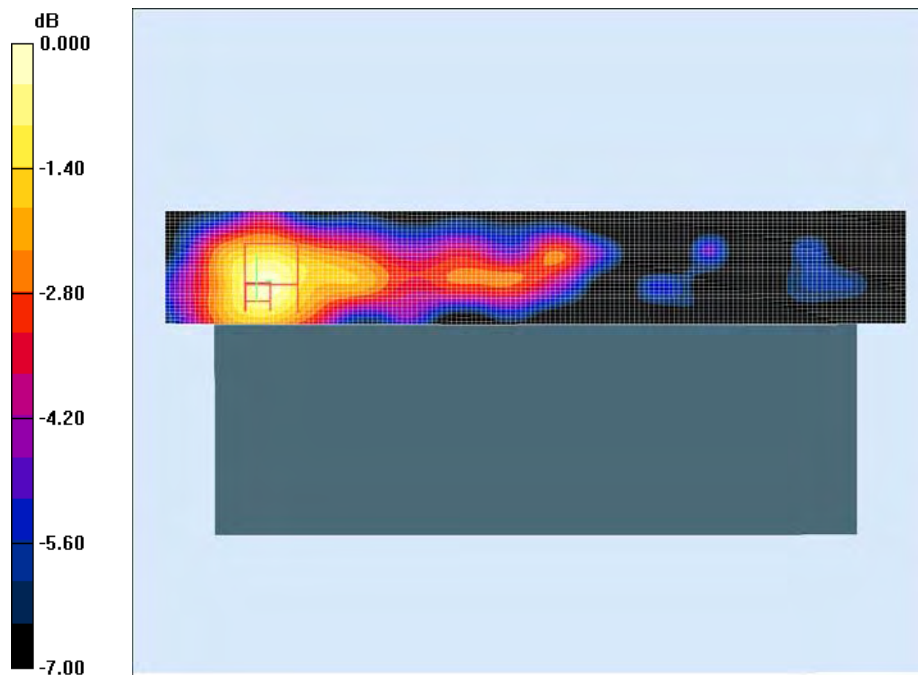
DASY4 Configuration:

- Probe: ES3DV2 - SN3019; ConvF(4.38, 4.38, 4.38); Calibrated: 8/25/2011
- Sensor-Surface: 4mm (Mechanical Surface Detection)
- Electronics: DAE3 Sn456; Calibrated: 12/7/2010
- Phantom: Flat Phantom 4.4; Type: Flat Phantom 4.4; Serial:
- Measurement SW: DASY4, V4.7 Build 80; Post processing SW: SEMCAD, V1.8 Build 186

Bottom Side Touch to the Phantom/Area Scan (31x151x1): Measurement grid: $dx=20\text{mm}$, $dy=20\text{mm}$
 Maximum value of SAR (interpolated) = 0.066 mW/g

Bottom Side Touch to the Phantom/Zoom Scan (7x7x7)/Cube 0: Measurement grid: $dx=5\text{mm}$, $dy=5\text{mm}$, $dz=5\text{mm}$
 Reference Value = 5.05 V/m; Power Drift = -7.94 dB
 Peak SAR (extrapolated) = 0.106 W/kg

SAR (1 g) = 0.064 mW/g; SAR (10 g) = 0.029 mW/g
 Maximum value of SAR (measured) = 0.069 mW/g



0 dB = 0.069mW/g

Test Laboratory: Bay Area Compliance Lab Corp. (BACL)**Left Side Touch to the Phantom (Low Channel) WCDMA 1900 MHz****DUT: NVIDIA Corporation; Type: Portable device; Serial: R1111165-1**

Communication System: WCDMA-1900MHz; Frequency: 1852.6 MHz; Duty Cycle: 1:1

Medium parameters used (interpolated): $f = 1852.6$ MHz; $\sigma = 1.53$ mho/m; $\epsilon_r = 51.2$; $\rho = 1000$ kg/m³

Phantom section: Flat Section

DASY4 Configuration:

- Probe: ES3DV2 - SN3019; ConvF(4.38, 4.38, 4.38); Calibrated: 8/25/2011
- Sensor-Surface: 4mm (Mechanical Surface Detection)
- Electronics: DAE3 Sn456; Calibrated: 12/7/2010
- Phantom: Flat Phantom 4.4; Type: Flat Phantom 4.4; Serial:
- Measurement SW: DASY4, V4.7 Build 80; Post processing SW: SEMCAD, V1.8 Build 186

Left Side Touch to the Phantom/Area Scan (31x91x1): Measurement grid: dx=20mm, dy=20mm

Maximum value of SAR (interpolated) = 0.067 mW/g

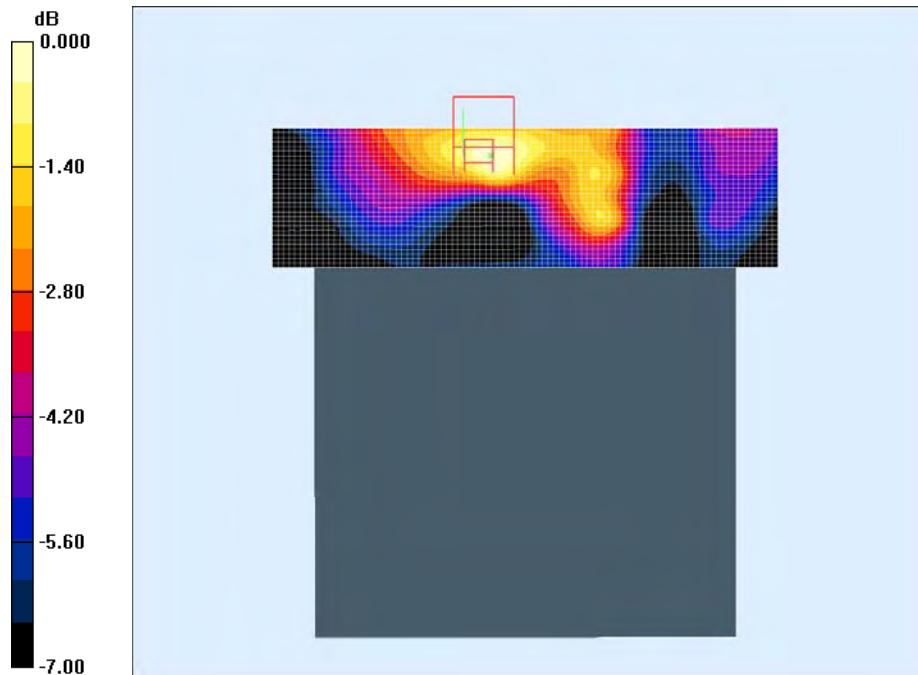
Left Side Touch to the Phantom/Zoom Scan (7x7x7)/Cube 0: Measurement grid: dx=5mm, dy=5mm, dz=5mm

Reference Value = 4.48 V/m; Power Drift = -0.428 dB

Peak SAR (extrapolated) = 0.105 W/kg

SAR (1 g) = 0.062 mW/g; SAR (10 g) = 0.039 mW/g

Maximum value of SAR (measured) = 0.069 mW/g

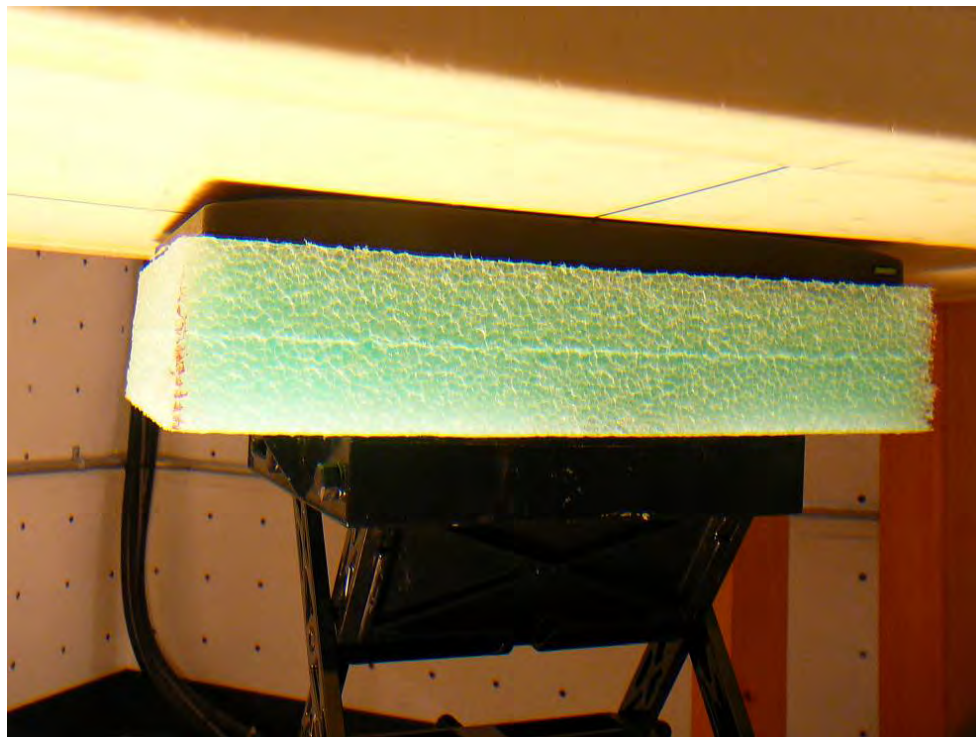


0 dB = 0.069mW/g

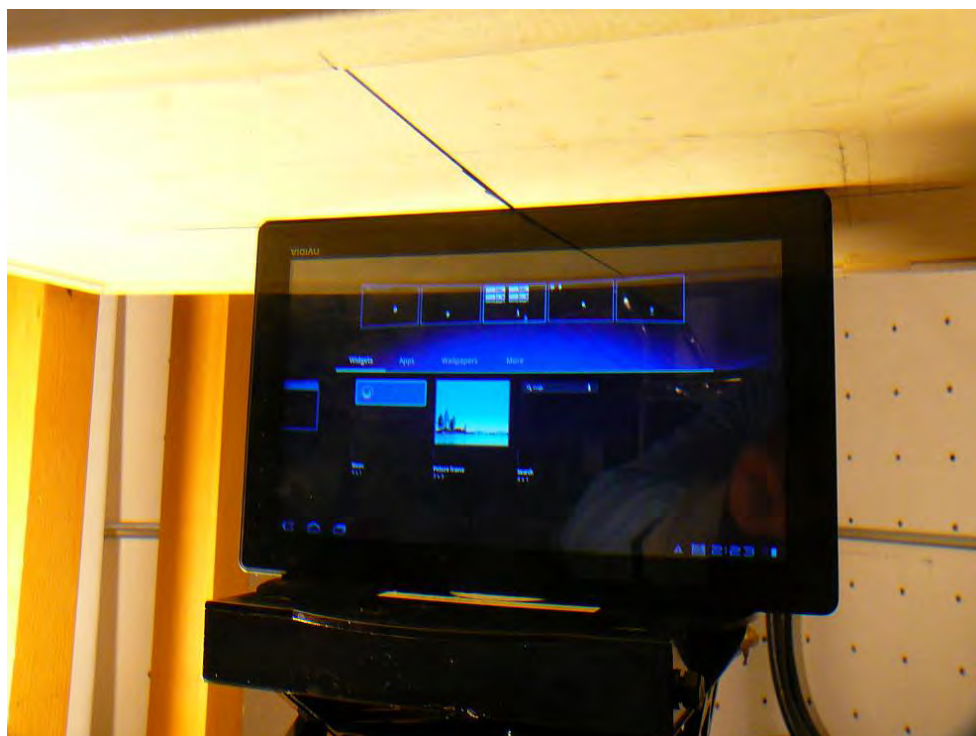
14

17 APPENDIX G – TEST SETUP PHOTOS

17.1 Back-Touch Setup Photo



17.2 Bottom-Touch Setup Photo

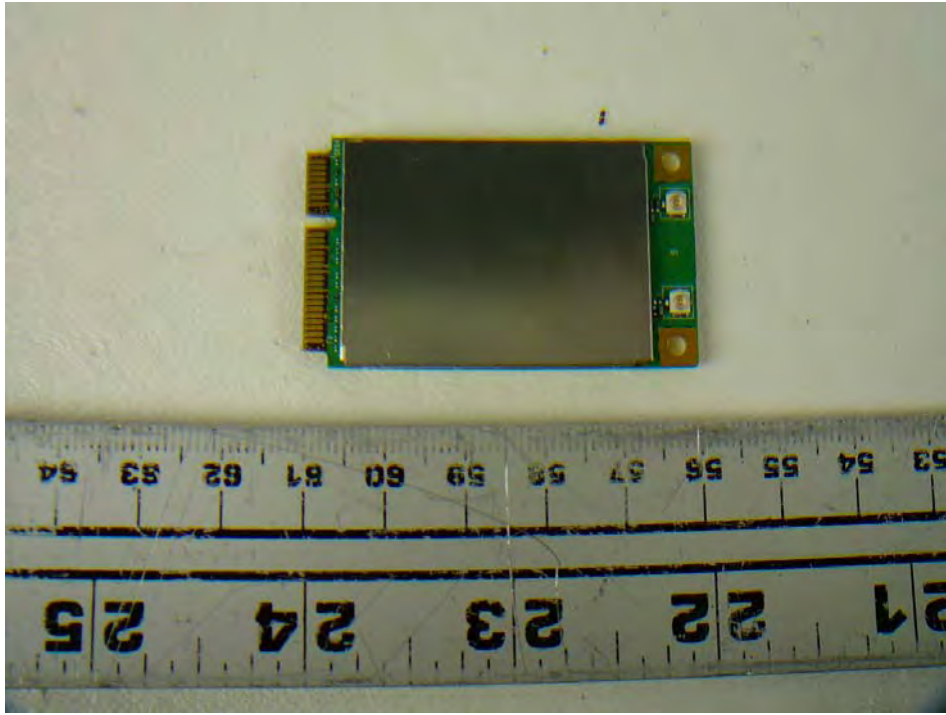


17.3 Left-Touch Setup Photo

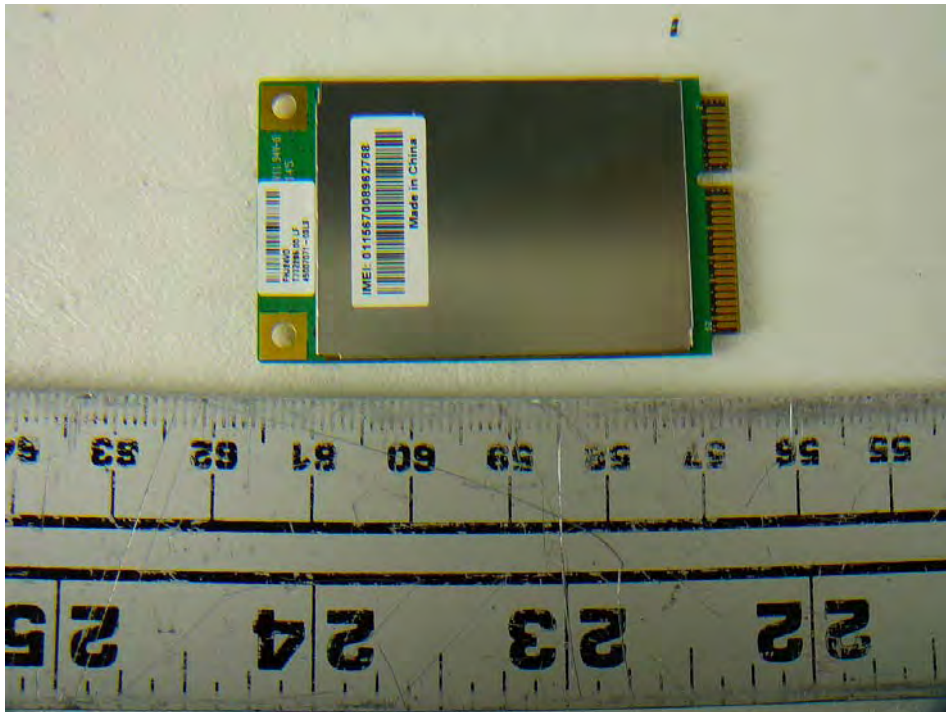


18 APPENDIX H – EUT PHOTOS

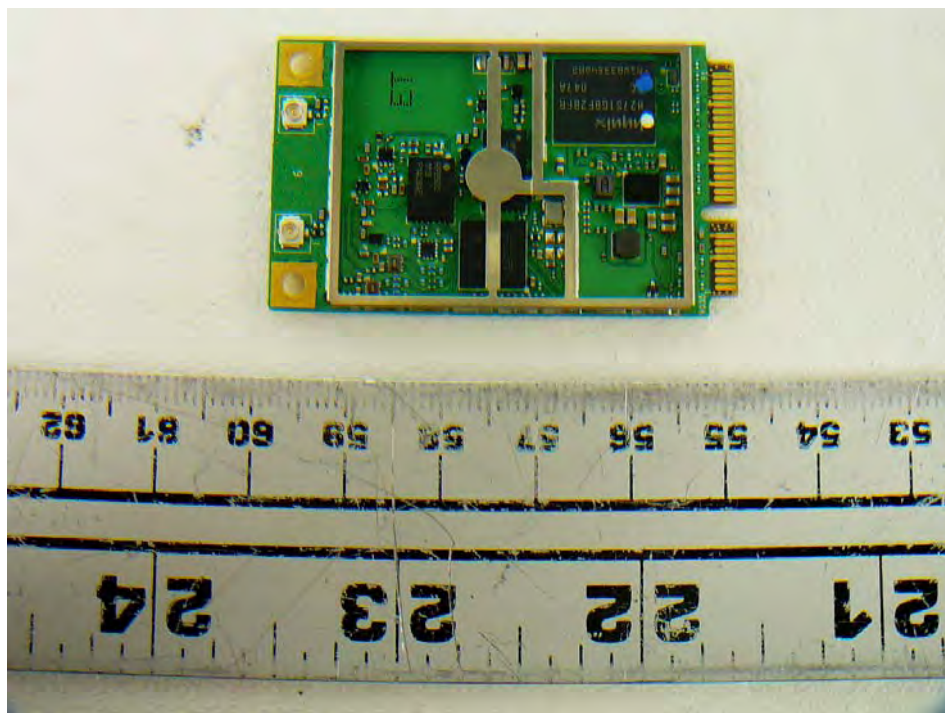
18.1 WWAN Module View (Front Side with Shield)



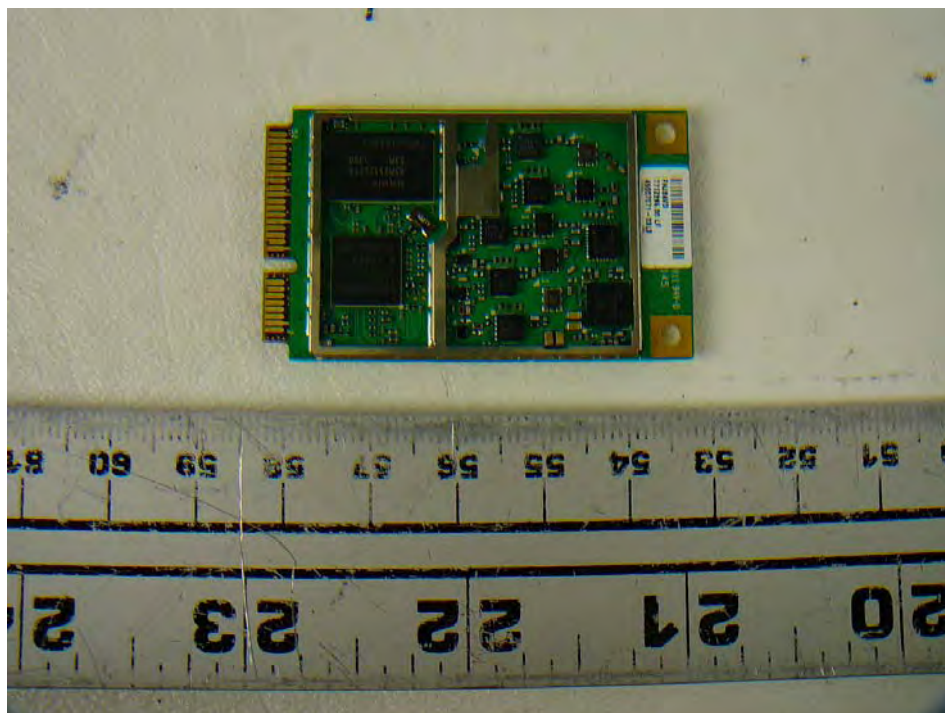
18.2 WWAN Module View (Back Side with Shield)



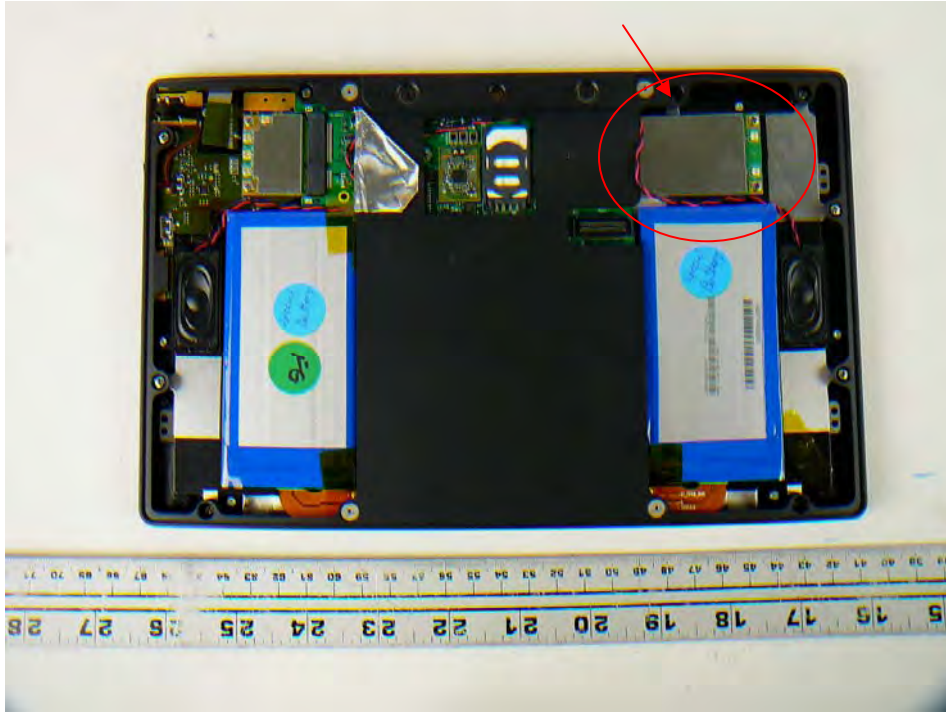
18.3 WWAN Module View (Front Side without Shield)



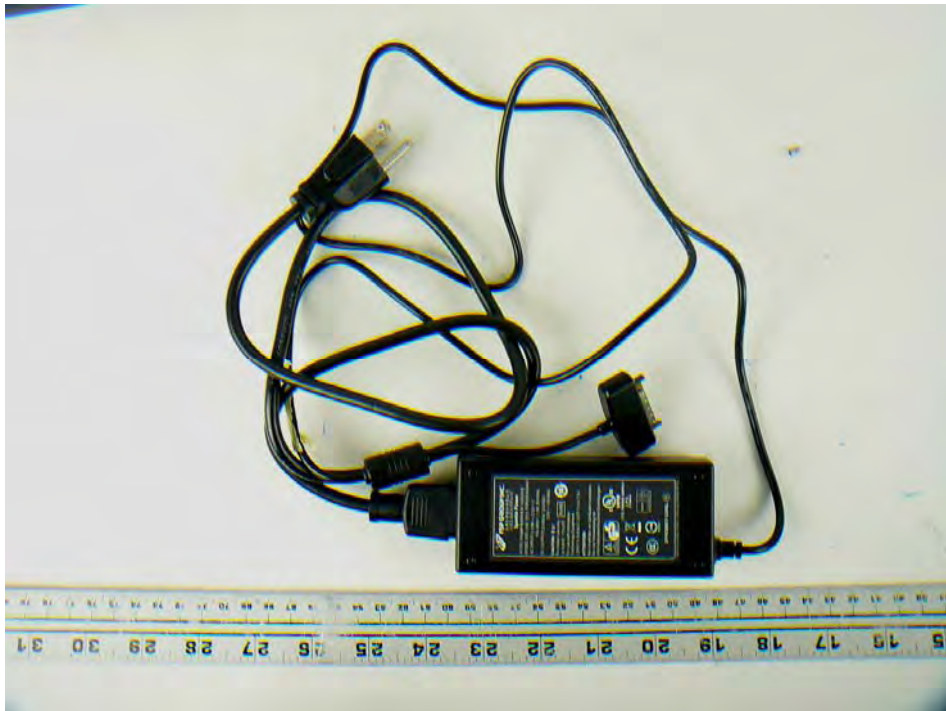
18.4 WWAN Module View (Back Side without shield)



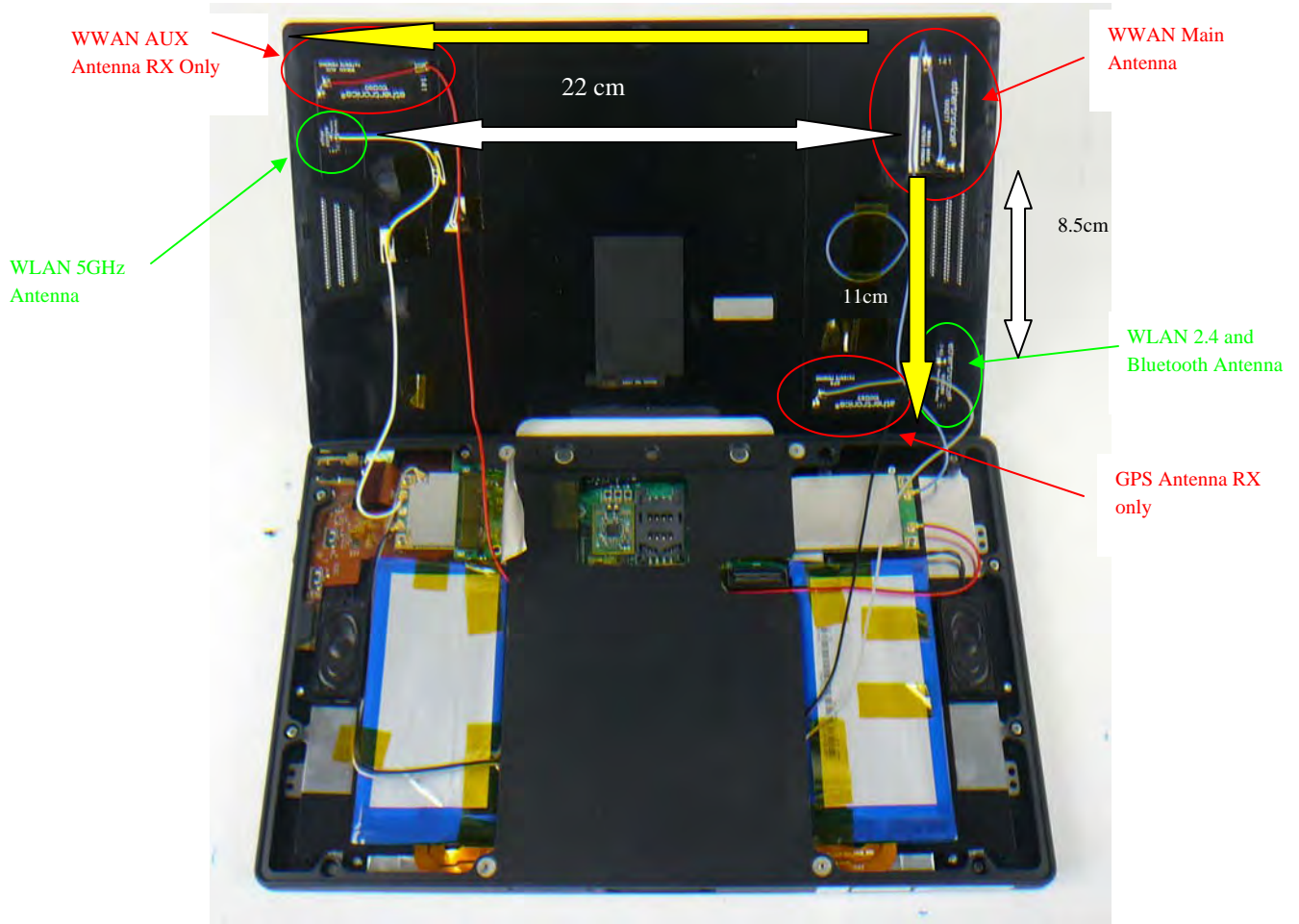
18.5 WWAN Module Built into the Tablet PC (Motion E1290)



18.6 Tablet PC Power Supply View



18.7 WWAN Module Built into the Tablet PC (E1290) Detail View



18.8 Tablet PC -Front View



18.9 Tablet PC -Back View



18.10 Tablet PC - Port View (1)



18.11 Tablet PC - Port View (2)



18.12 Tablet PC - Top Side View



19 APPENDIX I - INFORMATIVE REFERENCES

- [1] Federal Communications Commission, \Report and order: Guidelines for evaluating the environmental effects of radiofrequency radiation", Tech. Rep. FCC 96-326, FCC, Washington, D.C. 20554, 1996.
- [2] David L. Means Kwok Chan, Robert F. Cleveland, \Evaluating compliance with FCC guidelines for human exposure to radiofrequency electromagnetic fields", Tech. Rep., Federal Communication Commission, Office of Engineering & Technology, Washington, DC, 1997.
- [3] Thomas Schmid, Oliver Egger, and Niels Kuster, \Automated E-field scanning system for dosimetric assessments", IEEE Transactions on Microwave Theory and Techniques, vol. 44, pp. 105{113, Jan. 1996.
- [4] Niels Kuster, Ralph Kastle, and Thomas Schmid, \Dosimetric evaluation of mobile communications equipment with known precision", IEICE Transactions on Communications, vol. E80-B, no. 5, pp. 645{652, May 1997.
- [5] CENELEC, \Considerations for evaluating of human exposure to electromagnetic fields (EMFs) from mobile telecommunication equipment (MTE) in the frequency range 30MHz - 6GHz", Tech. Rep., CENELEC, European Committee for Electrotechnical Standardization, Brussels, 1997.
- [6] ANSI, ANSI/IEEE C95.1-1992: IEEE Standard for Safety Levels with Respect to Human Exposure to Radio Frequency Electromagnetic Fields, 3 kHz to 300 GHz, The Institute of Electrical and Electronics Engineers, Inc., New York, NY 10017, 1992.
- [7] Katja Pokovic, Thomas Schmid, and Niels Kuster, \Robust setup for precise calibration of E-field probes in tissue simulating liquids at mobile communications frequencies", in ICECOM _ 97, Dubrovnik, October 15{17, 1997, pp. 120-24.
- [8] Katja Pokovic, Thomas Schmid, and Niels Kuster, \E-field probe with improved isotropy in brain simulating liquids", in Proceedings of the ELMAR, Zadar, Croatia, 23{25 June, 1996, pp. 172-175.
- [9] Volker Hombach, Klaus Meier, Michael Burkhardt, Eberhard Kuhn, and Niels Kuster, \The dependence of EM energy absorption upon human head modeling at 900 MHz", IEEE Transactions on Microwave Theory and Techniques, vol. 44, no. 10, pp. 1865-1873, Oct. 1996.
- [10] Klaus Meier, Ralf Kastle, Volker Hombach, Roger Tay, and Niels Kuster, \The dependence of EM energy absorption upon human head modeling at 1800 MHz", IEEE Transactions on Microwave Theory and Techniques, Oct. 1997, in press.
- [11] W. Gander, Computermathematik, Birkhaeuser, Basel, 1992.
- [12] W. H. Press, S. A. Teukolsky, W. T. Vetterling, and B. P. Flannery, Numerical Recipes in C, The Art of Scientific Computing, Second Edition, Cambridge University Press, 1992. Dosimetric Evaluation of Sample device, month 1998 9
- [13] NIS81 NAMAS, \The treatment of uncertainty in EMC measurement", Tech. Rep., NAMAS Executive, National Physical Laboratory, Teddington, Middlesex, England, 1994.
- [14] Barry N. Taylor and Christ E. Kuyatt, \Guidelines for evaluating and expressing the uncertainty of NIST measurement results", Tech. Rep., National Institute of Standards and Technology, 1994. Dosimetric Evaluation of Sample device, month 1998 10.
- [15] FCC KDB 616217, KDB 648474, KDB 248227

--- END OF REPORT ---