

IMPORTANT REGULATORY INFORMATION

This device complies with Part 15 of the FCC Rules:

Operation is subject to the following two conditions:

1. This device may not cause harmful interference, and
2. This device must accept any interference that is received, including any interference that may cause undesired operation.

WARNING:

Changes or modifications to this unit not expressly approved by the party responsible for compliance could void the user's authority to operate the equipment.

Contents

BEFORE USING YOUR HEADSET

Checking phone compatibility.....	19
Your headset overview	19
Checking the accessories	20
Charging the headset.....	20
Storage of the headset.....	22

BASIC OPERATIONS

turning the headset on/off.....	22
Pairing with your Bluetooth phone.....	24
Wearing the Headset.....	25
Making a call.....	26
Ending a call.....	27
Answering a call.....	27
Rejecting a call.....	28
Using enhanced features.....	28

APPENDIX

Frequently asked questions.....	29
Warranty and parts replacement.....	31
Correct disposal of this product.....	33

Thank you for purchasing the Bluetooth Mono headset A series (A6, A8), we hope you will be delighted with its operation.

Please read this user's guide to get started, and to make the best use of the headset's many features.

Driving safety

- When you are driving a car, driving is your first responsibility
- When using your headset while driving, follow local regulations in the country or region you are in.

BEFORE USING YOUR HEADSET

Checking phone compatibility

Your headset is compatible with most Bluetooth phones that are compliant with Bluetooth version 2.0 and support the headset and/or hands-free profile(s). Ensure that your phone has Bluetooth capability by visiting your phone manufacturer's web site

Your headset overview



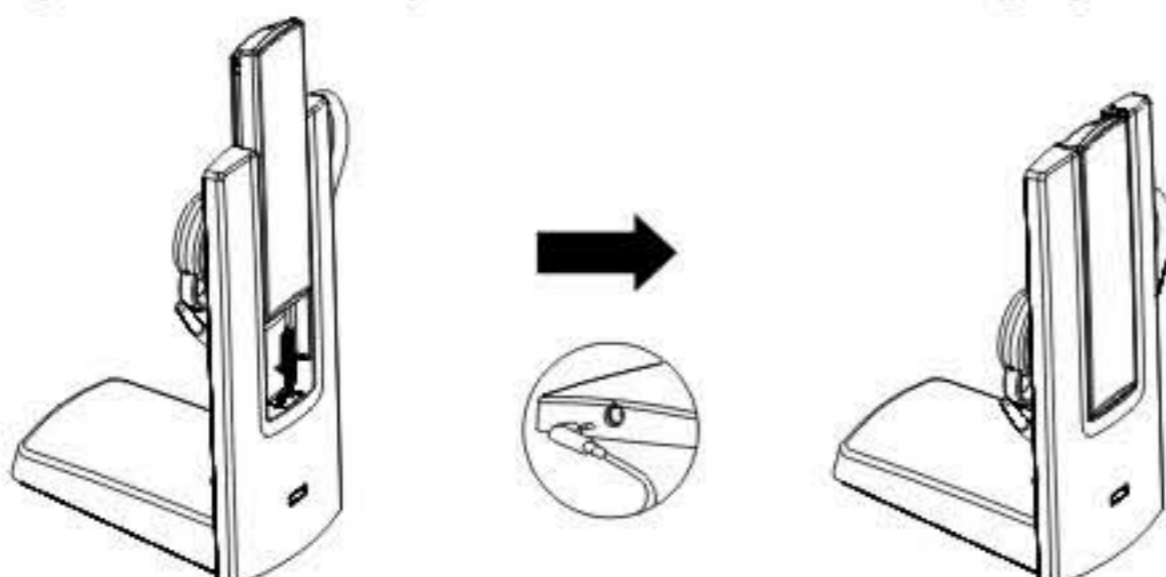
Checking the accessories

Make sure you have the following items with your headset: Charging case, travel adapter, Manual, 2 headset hooks


Charging the headset


Your headset uses a rechargeable battery. You must charge the battery fully before using the headset for the first time.

1. Put the headset in the charging case
2. Plug the travel adapter into the case's charging socket



3. Plug the travel adapter into the electrical outlet
 - The red indicator light is turn on during charging when the battery's fully charged the red indicator light turns off and the green indicator turn on
 - The headset will be fully charged in approximately 2-3 hours.

 **WARNING** Do not attempt to charge the headset with anything other than the travel adapter provided. Using unauthorised travel adapter may damage the headset

 **IMPORTANT** The headset cannot be used while charging.

Storage of the headset

- Always store the headset with the power off and make sure it is safely protected
- Avoid storage at high temperatures (above 40 C/104 F). Such as in a hot vehicle or in direct sunlight. (Storage at temperatures can damaged performance and reduce battery life).
- Do not expose the headset or any of its supplied parts to rain or other liquids.

BASIC OPERATIONS

Turning the headset on/off

To	Press and hold	You will hear	You will see
Turn the headset on	The multi-function button for 4 seconds until you see 3 blue flashes on the indicator light, then release	A tone	The indicator light flashes while the power is on (see Meaning of the indicator light).

22

To	Press and hold	You will hear	You will see
Turn the headset on	The multi-function button for 4 seconds until you see 2 blue flashes on the indicator light, then release	Series of 2 tones	The indicator light flashes while the power is on (see Meaning of the indicator light).

Meaning of the indicator light

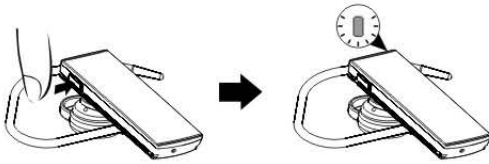
Light	Tone	Status
Flashes in blue every 8 seconds	Quick series of 2 tones. (Active mode starts.)	The headset is in Active mode. The headset has an active call in progress. You can talk up to 4 hours.
Flashes in blue every 3 seconds	Quick series of 2 tones. Standby mode starts.	The headset is in Standby mode. The headset is waiting for a call. The headset can be in Standby mode up to 70 hours.

23

Pairing with your Bluetooth phone

Pairing will create a unique and encrypted wireless link between two Bluetooth enabled devices, such as your Bluetooth phone and Bluetooth headset.

- Ensure that the headset is off (see Turning the headset on/off).
- Press and hold the Multi-Function button until the indicator light turns on in blue (approximately 8 seconds).



- Set your Bluetooth phone to discover the headset by following your phone's guide. Typically, the steps involve going to a "Setup", "Connect" or "Bluetooth" menu on your phone and then selecting the option to discover Bluetooth devices.

24

- Your phone will find A series (A6 or A8) headset and ask if you want to pair with it. Confirm this by pressing the Yes or OK key
- Enter a passkey or PIN, 0000 (4 zeros), then press the Yes or OK key



If pairing was successful, the indicator light will flash in blue 10 times rapidly before going to **IMPORTANT** flashing every 3 seconds. If unsuccessful, the light remains on, and you will need to reattempt pairing.

Wearing the Headset

Depending on what ear you are going to wear the headset, simply adjust the hook accordingly



▲ Left



▲ Right

25

Making a call

Making a voice activated call

If the voice recognition feature is on, you can make a voice activated call

- Press the Multi-Function button once. You will hear the voice -activation tone
- Say the name of the person you wish to call.
Depending on your phone, this feature is not supported.

Redialling the last number

If the voice recognition feature is off,

Press and hold the Multi-Function button for 2 seconds, twice.

If the voice recognition feature is on

- Press the Multi-Function button and listen for the voice-activation tone. When you hear it, press the button again to cancel the feature.
- Press and hold the Multi-Function button to access the recent call list.
- Press and hold the Multi-Function button to make a call to the last number you have dialed or received.

26



IMPORTANT

Depending on your phone, you should press the Multi-Function button briefly or press and hold it to redial the last number.

Ending a call

Press the Multi-Function button once.

Answering a call

- After you hear the ring tone, press the Multi-Function button once
- If you answer the call with your phone, you can transfer the call to the headset by pressing the Multi-Function button



IMPORTANT

Do not hold the Multi-Function button down too long when making a call with your voice, ending, or answering a call. This should only be a quick tap

27

Rejecting a call.

When you receive a call, press and hold the Multi-Function button for 2 seconds to reject the call. Depending on your phone's setting or type, you may only be able to mute the ringer or this feature is not supported.

Adjusting the volume

Using enhanced features

Enhanced features are available for phones that support the hands-free Bluetooth profile and enhanced features

. Answering a second call (switching between 2 calls)

When your phone notifies you of another incoming call while you are on a call, press and hold the Multi-Function button for 2 seconds.

You can switch between calls by pressing and holding it for 2 seconds.

Depending on your phone, this feature is not supported.

28

. Placing a call on hold

While you are on a call, press and hold the Multi-Function button for 2 seconds

To retrieve the call, press and hold the Multi-Function button for 2 seconds again

Depending on your phone, this feature is not supported.

. Switching off the microphone

press and hold the up volume control button to switch off the headset's microphone.

To switch it back on, press and hold the button again

APPENDIX

Frequently asked questions

How far away from my phone will the headset work?	The operating range is typically up to 30 feet (10 metres)
Will the headset work with my cordless phone at home?	The headset is not designed for use with cordless phone

29

Will the headset work with laptops PCs, and PDAs?

The headset will work with devices that are compliant with Bluetooth version 2.0 and support the headset and/or hands-free profile(s)

Will anything cause interference with my conversation when I'm using the headset?

Appliances such as cordless phones and wireless networking equipment may cause interference with your conversation. To reduce any interference, keep the headset away from other devices that use or produce radio waves

Will the headset interfere with my car's electronics radio, or computer?

The headset produces significantly less power than atypical mobile phone. It also only emits signals that are in compliance with the international Bluetooth standard. Therefore, you should not expect any interference with standard consumer-grade electronics equipment.

Can other Bluetooth phone users hear my conversation?

When you pair the headset to your Bluetooth phone, you are creating a private link between only these two Bluetooth devices. The wireless Bluetooth technology used in the headset is not easily monitored by third parties, because Bluetooth wireless signals are significantly lower in radio frequency power than those produced by a typical mobile phone

How do I take care of the headset?

To clean the headset, use a clean, soft cloth that is slightly damp

30

Warranty and parts replacement

The company warrants this product as free of defects in material, design and workmanship for the period of one year from the original date of purchase.

If during the period of warranty this product proves defective under normal use and service you should return the product to the retailer from whom it was originally purchased or qualified service center. The liability of the company and its appointed maintenance company is limited to the cost of repair and/or replacement of the unit under warranty.

- The warranty is limited to the original purchaser
- A copy of your receipt or other proof of purchase is required for a proper warranty service
- The warranty is void if the serial number, date code label or product label is removed, or if the product has been subject to physical abuse, improper installation modification, or repair by unauthorised third parties

31

- The responsibility of Bluetooth products shall be limited to the repair or replacement of the product at its sole discretion
- Specifically exempt from any warranty are limited-life consumable components such as batteries and other accessories
- Bluetooth is not liable for any incidental or consequential damages arising from the use or misuse of any Bluetooth product
- This warranty give you specific rights and you may have other rights which vary from area to area
- Unless otherwise instructed in the User Guide, the user may not, under any circumstances, attempt to perform service, adjustments or repairs on the unit, whether in or out of warranty. It must be returned to the purchase point, factory or authorised service agency for all such work.
- Bluetooth will not assume any responsibility for any loss or damage incurred in shipping. All repair work on Bluetooth products by unauthorised third parties voids any warranty

32

Correct disposal of this product



(Waste Electrical & Electronic Equipment)

This marking shown on the product or its literature, indicates that it should not be disposed with other household wastes at the end of its working life.

To prevent possible harm to the environment or human health from uncontrolled waste disposal, please separate this from other types of wastes and recycle it responsibly to promote the sustainable reuse of material resources.

Household user should contact either the retailer where they purchased this product, or their local government office, for details of where and how they can take this item for environmentally safe recycling.

Business users should contact their supplier and check the terms and conditions of the purchase contract. This product should not be mixed with other commercial wastes for disposal.

33