



www. **Bluedio** .com

Guangzhou Liwei Electronics Co.,Ltd

Bluedio
— Powerful Sound —

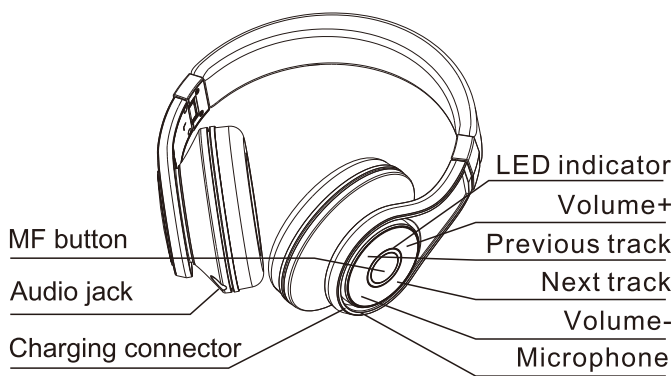
使用说明书
User Manual

U 2nd
Generation

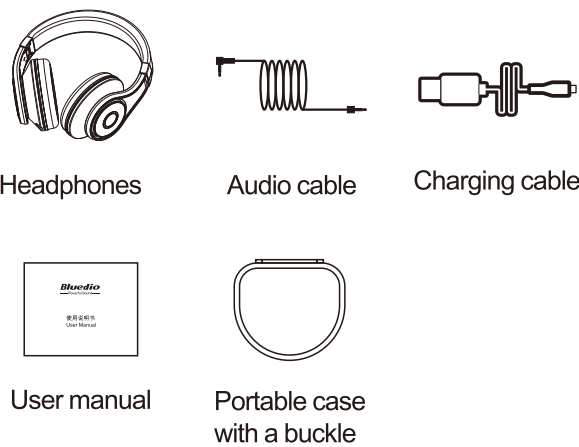


User manual / EN

Headphones overview



In the box



Operating instructions

Power on:

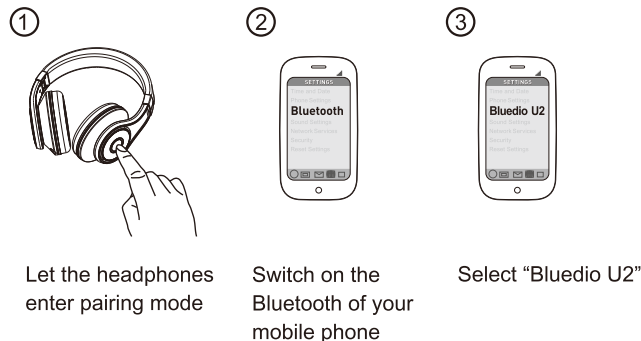
Press and hold the MF button until you hear "Power on".

Power off:

Press and hold the MF button until you hear "Power off".

Bluetooth pairing:

1. Power on the headphones and they will enter pairing mode automatically.
2. Switch on the Bluetooth of your mobile phone, search or add the device and select "Bluedio U2". (If asked for a password or PIN code, enter "0000")
3. The paired headphones will automatically enter the reconnection mode and automatically connect to the last successful device. The blue light flashes.



1

Using the headphones to talk(connect with your phone via Bluetooth)

Answer/Reject phone calls:

Receiving an incoming call, press the MF button once to Answer; press once again to End; Press and hold for 1 seconds to refuse.

Voice dial

When standby or playing music, press the MF button for 1 second to make sound control and voice call.

Switch calls between phone and headphones

When answering a call, double click the MF button to transfer the current call to the phone or the headphones.

Redial last number

Press the MF button three times in a row.

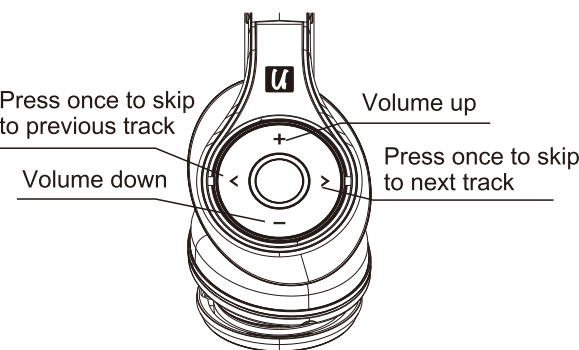
Switch phone calls:

Receiving Call 2 in Call 1, press the MF button once to end Call 1 and answer Call 2; press and hold the MF button to hold on Call 1 and answer Call 2.
Press and hold the MF button can switch between Call 1 and Call 2; press once to end the call.

Music control/volume adjustment (in Bluetooth mode)

Pause/Play: press the MF button
Previous track: press the < button
Next track: press the > button
Volume up: press the + button
Volume down: press the - button

2



Clearing the headphones memory

Press and hold the MF button for 5 seconds. Headphones enter pairing mode directly next time. (Without the tone "power on")

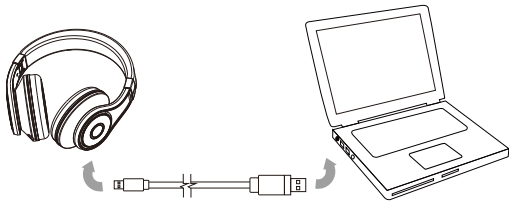
Automatic shutdown

Headphones are no connected after powering on, wait for 10 minutes and they will power off automatically.

Charge the headphones:

The built-in battery of the headphone is rechargeable and non-detachable. Do not replace the battery.

1. Turn off the headphones before charging.
2. Use the included charging cable to connect the headphones with a computer or wall charger. While charging, the red light stays on.
3. Allow 3 hours for a full charge. Once fully charged, the blue light will stay on.



3

Specifications

Bluetooth version: 5.0
Bluetooth transmission frequency: 2.4GHz to 2.48GHz
Bluetooth operating range: up to 33 feet (free space)
Bluetooth profiles: A2DP, AVRCP, HSP, HFP
Drivers: Φ 50mm x 2 , Φ 20mm x 6
Frequency response: 5Hz-25000Hz
Impedance: 32 Ω
Total Harmonic Distortion (THD): 0.3%—3%
SPL: 120dB
Audio resolution: 24bit@48KHz
Standby time: 1300 hours
Music/talk time: 25 hours
Charging time: 3 hours for full charge
Operating environment: -10 to 50°C
Charging voltage/current: 5V/500mA
Output power: 120mA

Cloud function

The headphones support Alibaba Cloud Computing and other cloud platform. Users can download the app by scanning the QR code on page 37.

Wake up the cloud (have installed the cloud app on your phone)

Connect the headphones with your phone; open the app and then double-click the MF button to wake up the cloud.

Purchase verification

You can find the verification code by scraping the coating off the security label that is affixed to the original packaging. Enter the code on our official website: www.bluedio.com for purchase verification.

Learn more and get support

Welcome to visit our official website: www.bluedio.com; Or to email us at aftersales@bluedio.com; Or to call us at 400-889-0123.

4

NOTE: This equipment has been tested and found to comply with the limits for a Class B digital device, pursuant to part 15 of the FCC Rules. These limits are designed to provide reasonable protection against harmful interference in a residential installation. This equipment generates uses and can radiate radio frequency energy and, if not installed and used in accordance with the instructions, may cause harmful interference to radio communications. However, there is no guarantee that interference will not occur in a particular installation. If this equipment does cause harmful interference to radio or television reception, which can be determined by turning the equipment off and on, the user is encouraged to try to correct the interference by one or more of the following measures:

- Reorient or relocate the receiving antenna.
- Increase the separation between the equipment and receiver.
- Connect the equipment into an outlet on a circuit different from that to which the receiver is connected.
- Consult the dealer or an experienced radio/TV technician for help

Changes or modifications not expressly approved by the party responsible for compliance could void the user's authority to operate the equipment.

This device complies with Part 15 of the FCC Rules. Operation is subject to the following two conditions:
(1) this device may not cause harmful interference, and
(2) this device must accept any interference received, including interference that may cause undesired operation.

5