

BS-3

Bluetooth Speaker

USER MANUAL

WWW. **Bluedio** .COM

Welcome to use this manual

Thanks very much for your great support to this speaker.

To verify the speaker

Scrape the anti-fake label on the package for verification code; Visit our website: www.bluedio.com; Enter the verification code to verify the speaker.

For information and help

Welcome to visit our website: www.bluedio.com;
Or to email us at aftersales@gdliwei.com;
Or to call us at 020-86062626-835.

Security Precautions:

In order to have a proper and safe use of the speaker, please read this user manual in detail and save it.

Important safety information

- Do not listen at high volume levels for long periods of time to prevent hearing damage.
- Do not use the speaker if there is any potential danger.
- Do not turn the volume too high to hear sounds around you, turn down the volume if you feel a tinnitus or the volume is too high.
- Do not use the speaker in an environment that requires your special attention(e.g. in traffic).
- Keep the speaker, accessories and packaging parts out of reach of children, to prevent accidents and choking hazards.
- Always keep the speaker dry to avoid corrosion .
- Do not expose the speaker to extreme temperatures below -15°C (5°F) or above 55°C (131°F) , to maintain the lifespan of speaker or battery.

In the box



Bluetooth 4.1
Speaker 1pc



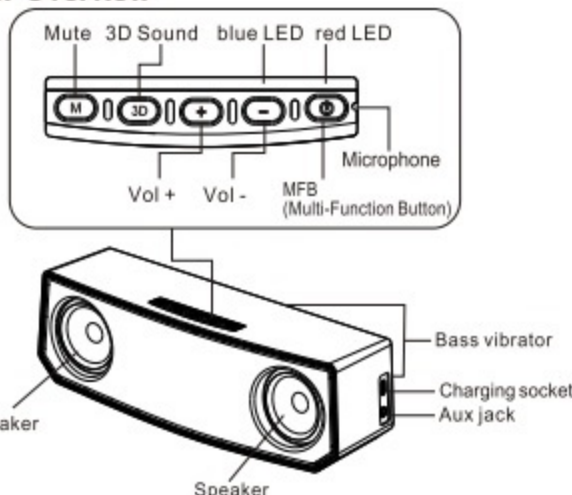
Charging cable 1pc



User manual 1pc

... 2 ...

Speaker Overview



Charging and battery

Warning

1. Charging cable: Only use charging cable of standard Micro-USB(5 PINS). 2. Charger: If you use a charger for charging, its output DC voltage should be 5V±0.3V, and its output current should exceed 1000mA.

Charge the speaker

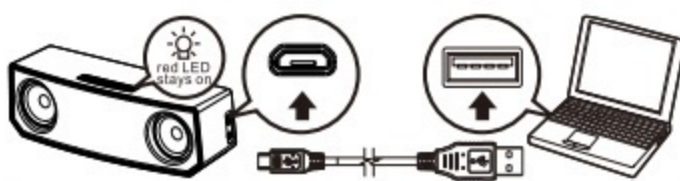
The built-in battery of the speaker is rechargeable and non-detachable. Do not replace the battery.

1. Power off the speaker before charging.
2. Connect the Micro-USB plug(the smaller plug) of the

... 3 ...

charging cable to the charging socket of the speaker; Connect the other plug to the USB socket of your computer or other charging device. When charging, you will see the red LED stays on (not blinking).

3. When fully charged (takes about 3-4hrs), you will see the blue LED stays on or the red LED goes out.



State	Voice prompt	LED indicator
Charging/ Fully charged	No/No	Red LED stays on/ Blue LED stays on
Power on/ Power off	Power on/ Power off	Red LED flashes/Red LED flashes then goes out
Pair/ Reconnect	Pairing/ Connected	Red LED and blue LED flash alternately/ blue LED blinks
Low battery	No	Red LED blinks
Aux-in	No	Blue LED blinks then goes out

Power On/Off

ON: Press the MFB and hold it for 3 seconds or so, only when you hear "power on" can you release the button, the speaker is on.

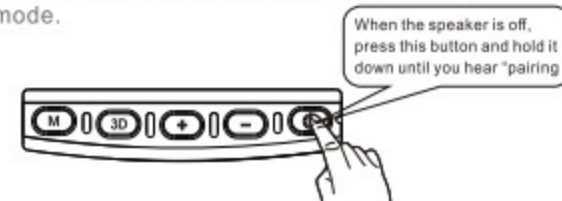
OFF: Press the MFB and hold it for 4 seconds or so, only

... 4 ...

when you hear "power off" can you release the button, the speaker is off.

Make the speaker enter pairing mode

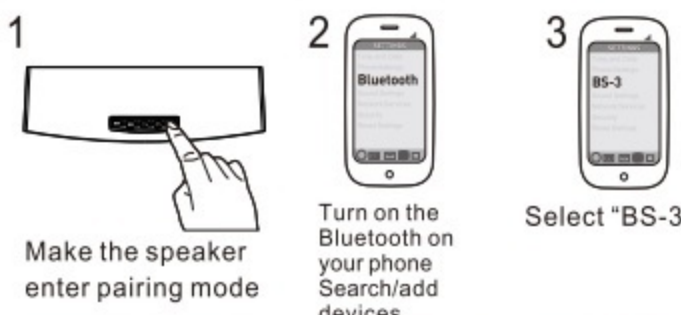
When the speaker is off(if not, power off the speaker first), press the MFB and hold it for 5 seconds or so, only when you hear "pairing" can you release the button, and you can see the red LED and blue LED flash alternately, the speaker is in pairing mode.



Pair the speaker with your mobile phone

1. Keep the distance between the speaker and your mobile phone within 1 meter. The closer, the better.
 2. Make the speaker enter pairing mode. (See instruction "Make the speaker enter pairing mode")
 3. Switch on the Bluetooth of your mobile phone, add/search devices.
 4. When "BS-3" appears, select it. (If asked for a pass code: Enter "0000")
 5. When successfully paired, you can hear "connected".
- Attention: If the pairing is not successful within 120 seconds, the LED will go out and the speaker is out of pairing mode. Please repeat the pairing procedure to try again.

... 5 ...



Connect the speaker to two mobile phones at the same time:

1. Keep the distance between the speaker and two mobile phones within 1 meter. The closer, the better.
2. Make the speaker enter pairing mode. (See instruction "Make the speaker enter pairing mode")
3. Switch on the Bluetooth of phone 1, add/search devices, select "BS-3", connect phone 1 to the speaker.
4. Switch off the Bluetooth of phone 1, and power off the speaker.
5. Again, make the speaker enter pairing mode. (See instruction "Make the speaker enter pairing mode")
6. Switch on the Bluetooth of phone 2, add/search devices, select "BS-3", connect phone 2 to the speaker.
7. Again, switch on the Bluetooth of phone 1, and the speaker will automatically reconnect to it. (If automatic reconnection fails, please remove the paired memory from phone 1, and repair it to the speaker)
8. The speaker connects to two mobile phones at the same time.

... 6 ...

Reconnect the paired speaker to your mobile phone

1. Keep the distance between the speaker and your mobile phone within 1 meter. The closer, the better.
2. Simply power on the speaker, no other operation needed. When you see the blue LED blinks, the speaker is in reconnecting mode.
3. Switch on the Bluetooth of your mobile phone, and the speaker will automatically reconnect to it. (If automatic reconnection fails, please remove the paired memory from your phone, and repair it to the speaker)

Disconnect the speaker with your mobile phone

- Way 1: Power off the speaker.
Way 2: Switch off the Bluetooth of your mobile phone.
Way 3: Leave the speaker 60ft away from your mobile phone or farther.

Answer a call

When there is a call, to answer it, press the MFB down then release (no need to hold). Or use your mobile phone to answer it.

End a call

When you are on call, to end it, press the MFB down then release (no need to hold). Or use your mobile phone to end it.

Reject a call

When there is a call, to reject it, press the MFB and hold it for 2 seconds or so, then release the MFB. Or use your mobile phone to reject it.

... 7 ...

Redial the last number

Press the MFB twice continuously.

Call waiting (need your mobile phone to support)

1. To end call 1 & answer call 2: press the MFB down then release (no need to hold)
2. To keep call 1 & answer call 2: press the MFB and hold it for about 2 seconds, then release the MFB. When you are on call 2, and call 1 is still kept:
3. To switch to call 1 & keep call 2: press the MFB and hold it for about 2 seconds, then release the MFB.
4. To switch to call 1 & end call 2: press the MFB down then release (no need to hold)

Voice control (need your mobile phone to support)

Press the MFB and hold it for 2 seconds or so, then release the MFB.

Control track / Adjust Volume

- Pause /play track: press the MFB down then release (no need to hold)
Skip to previous track: press the Vol - Button and hold it for about 3 seconds, then release the button.
Skip to next track: press the Vol + Button and hold it for about 3 seconds, then release the button.
Turn up the speaker volume: press the Vol + Button down then release (no need to hold)
Turn down the speaker volume: press the Vol - Button down then release (no need to hold)

... 8 ...

3D Sound On/Off

When the speaker is playing music via Bluetooth, press the 3D Button down then release (no need to hold), the 3D sound is on; To turn it off, just press the 3D Button down then release (no need to hold).

Line-in Music Playing

Power on the speaker, connect the speaker to your phone with the included Aux cable.
*If the speaker has connected with your phone via Bluetooth, the speaker will automatically switch to Bluetooth mode to answer calls when there is a call.

Mute the Microphone

When answering calls via the speaker, press the Mute Button down then release (no need to hold), the microphone will be muted, and the caller will not hear you. To let the caller hear you again, just press the Mute Button down then release (no need to hold).

FAQ

1.Speaker cannot be paired to your mobile phone.

Solution: Check if the speaker has entered pairing mode. Check if your mobile phone supports the HS or HF profile. Check if the Bluetooth search function of your phone is switched on. Check if your mobile phone is switched off. Check if the distance between the speaker and your phone exceeds 10m.

... 9 ...

2.Speaker cannot be switched on.

Solution: The battery is flat. Recharge the battery.

3.Can the battery be replaced?

Answer: The battery is non-detachable and cannot be replaced.

4.Can the speaker be used while driving?

Answer: Do not use the speaker in an environment that requires your special attention. If necessary, use it for communication.

5.Bluetooth connection is suddenly interrupted within 10 meter.

Solution: Check if there is metal or other material interfering with the transmission.

6. No audio signal

Solution: Check if the speaker is switched off. Check if the speaker is paired. If necessary, pair the speaker with the audio source again. Check the connection to your audio source.

The volume is adjusted too low, increase the volume.

7.Can the speaker be used to control the APPs on your mobile phone.

Answer: Software settings of APPs may be varied, thus some APPs may not controlled by the speaker.

8. The speaker cannot be recharged.

Solution: Check the connection of USB plugs. If necessary, remove the USB cable and reconnect again. Switch the speaker on then turn it off.

...10...

Technical specification:

Bluetooth version: V4.1
Supported profiles: A2DP, AVRCP, HSP, HFP
Frequency range: 2.4GHz-2.48GHz
Bluetooth range: up to 32ft (free space)
Frequency response: 20Hz-20KHz
Output power: 2*5W
Input voltage: ≤1V
Bluetooth music / talk time: about 5hrs
Standby time: up to 1000hrs
Fully charged time: about 3-4hrs
Operating environment: -10 to 50°C

Technical specifications are subject to change without notice, we apologize for any inconvenience.

...11...

FCC STATEMENT

1. This device complies with Part 15 of the FCC Rules. Operation is subject to the following two conditions:

(1) This device may not cause harmful interference.

(2) This device must accept any interference received, including interference that may cause undesired operation.

2. Changes or modifications not expressly approved by the party responsible for compliance could void the user's authority to operate the equipment.

NOTE: This equipment has been tested and found to comply with the limits for a Class B digital device, pursuant to Part 15 of the FCC Rules. These limits are designed to provide reasonable protection against harmful interference in a residential installation.

This equipment generates uses and can radiate radio frequency energy and, if not installed and used in accordance with the instructions, may cause harmful interference to radio communications.

However, there is no guarantee that interference will not occur in a particular installation. If this equipment does cause harmful interference to radio or television reception, which can be determined by turning the equipment off and on, the user is encouraged to try to correct the interference by one or more of the following measures:

- Reorient or relocate the receiving antenna.

- Increase the separation between the equipment and receiver.

- Connect the equipment into an outlet on a circuit different from that to which the receiver is connected.

- Consult the dealer or an experienced radio/TV technician for help.