

Model: SMK-55335AG



User Manual

Wireless Keyboard and Mouse Combo Set



Caution: To use this device properly, please read the user' s guide before installation

Battery Installation

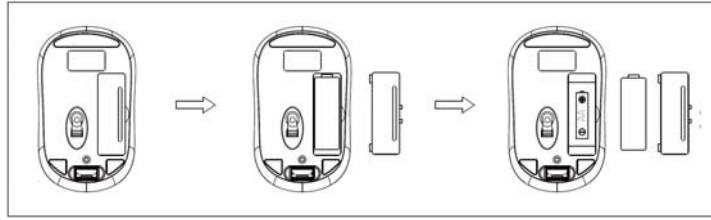
Wireless keyboard use 2*AAA alkaline battery, wireless mouse use 1*AA alkaline battery.

Battery Installation Procedure of Mouse

Step 1: Open the battery cover.

Step 2: Insert one AA batteries into the battery compartment as picture below.

Step 3: Close the battery cover.

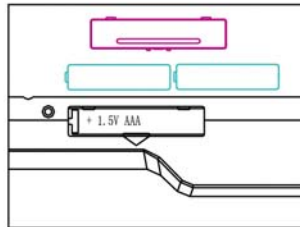


Battery Installation Procedure of Keyboard

Step 1: Open the battery cover on the bottom case of the keyboard.

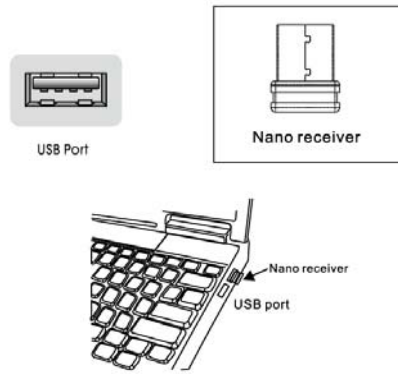
Step 2: Insert two AAA batteries into the battery compartment as picture below.

Step 3: Close the battery cover.



USB Wireless Receiver Connection

Plug in the receiver unit into an USB port of connector.



Obtain the receiver from Mouse

1. When you want to use the mouse, please take out the receiver from the bottom of the mouse and insert into your laptop (step 1);
2. When you are not working or travelling, you can restore the receiver into the bottom of the mouse (step 2).



Take out the Receiver



Store the Receiver

Keyboard Hotkeys

FN+ESC= Media Player	FN+F1= Play/Pause
FN+F2 = Previous Track	FN+F3=Next Track
FN+F4 = Volume Down	FN+F5= Volume Up
FN+F6 = Mute	FN+F7= Web Home
FN+F8 = Search	FN+F9 = My Favorite
FN+F10 =Email	FN+F11 = Calculator
FN+F12 = My Computer	

Energy Saving Mode

The mouse goes into power saving mode when: Nano-receiver is not plugged into PC/notebook, Nano-receiver is switched off when plugged into the PC/notebook or when the mouse is no longer in use after 30 minutes. With the intelligent power saving mode to conserve power, the mouse switches to sleep mode after 8 mins. To get the mouse out of sleep or energy saving mode, use the scroll wheel or click any buttons to resume using the mouse

Restoring Factory Default Settings

When you find this set doesn't work, you can make the mouse in working condition by restoring the mouse back to factory default settings.

- 1: check the battery volume is normal; if the battery is used out, please replace new batteries. if the battery volume is normal, please take out the battery and insert again the battery into the mouse.
- 2: insert the nano receiver onto the USB port of PC or notebook, make sure that the mouse is close to the receiver for auto-matching.
- 3: Restore keyboard setting back to factory default setting: Press "ESC" + " K" key together at the same time, and then re-insert the USB receiver into the USB port of the computer for searching the device;

FCC STATEMENT :

This device complies with Part 15 of the FCC Rules. Operation is subject to the following two conditions:

- (1) This device may not cause harmful interference, and
- (2) This device must accept any interference received, including interference that may cause undesired operation.

Warning: Changes or modifications not expressly approved by the party responsible for compliance could void the user's authority to operate the equipment.

NOTE: This equipment has been tested and found to comply with the limits for a Class B digital device, pursuant to Part 15 of the FCC Rules. These limits are designed to provide reasonable protection against harmful interference in a residential installation.

This equipment generates uses and can radiate radio frequency energy and, if not installed and used in accordance with the instructions, may cause harmful interference to radio communications. However, there is no guarantee that interference will not occur in a particular installation. If this equipment does cause harmful interference to radio or television reception, which can be determined by turning the equipment off and on, the user is encouraged to try to correct the interference by one or more of the following measures:

Reorient or relocate the receiving antenna.

Increase the separation between the equipment and receiver.

Connect the equipment into an outlet on a circuit different from that to which the receiver is connected.

Consult the dealer or an experienced radio/TV technician for help.