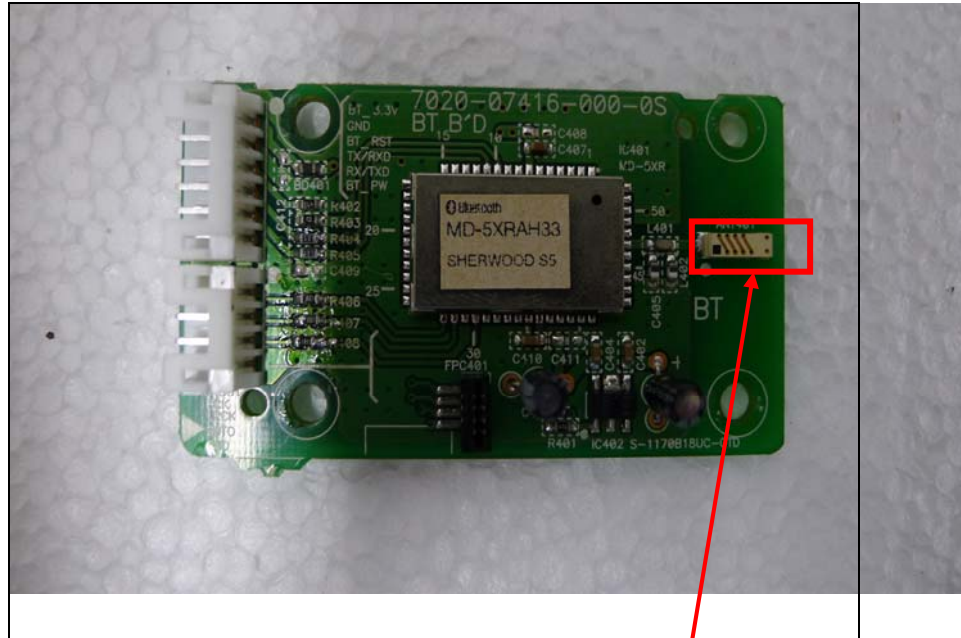
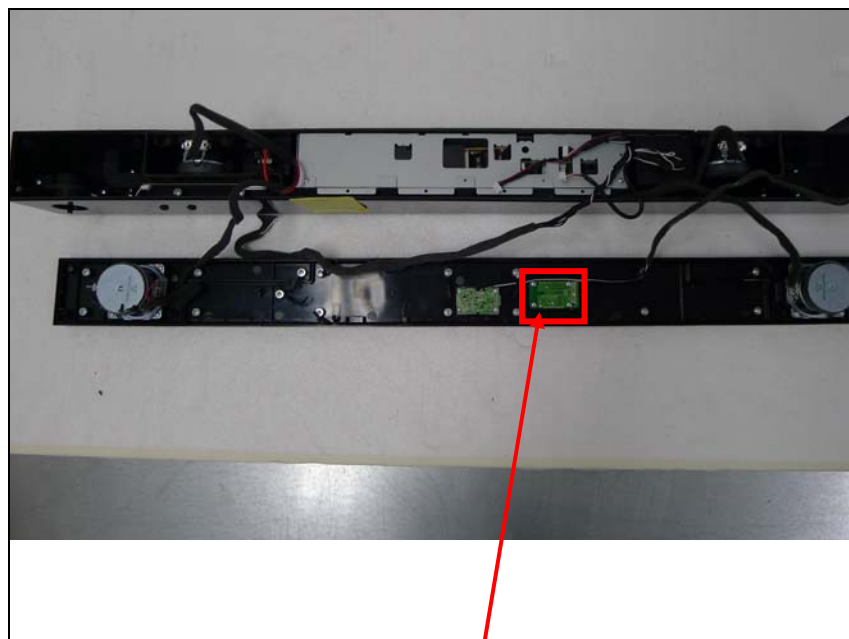


Internal photos of EUT

Antenna view of EUT



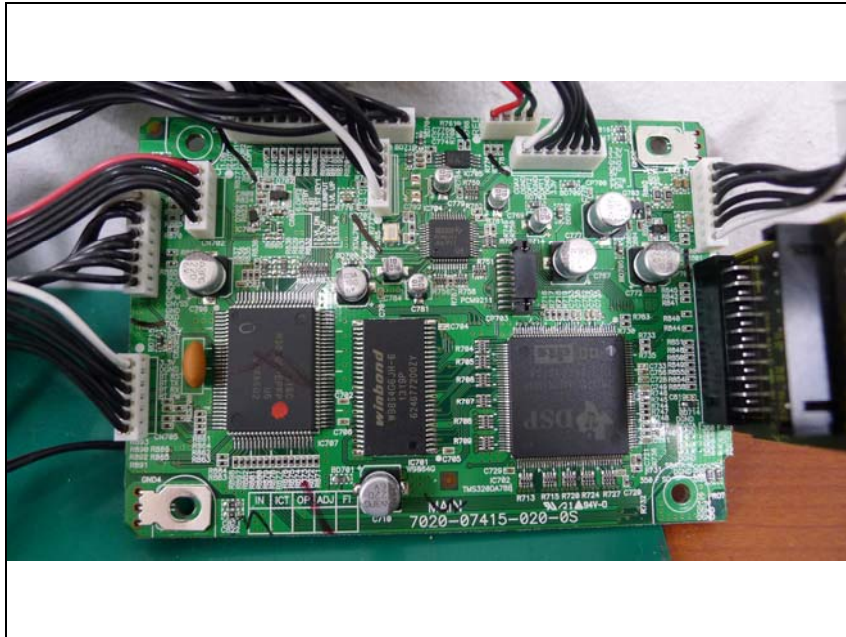
BT module view of EUT



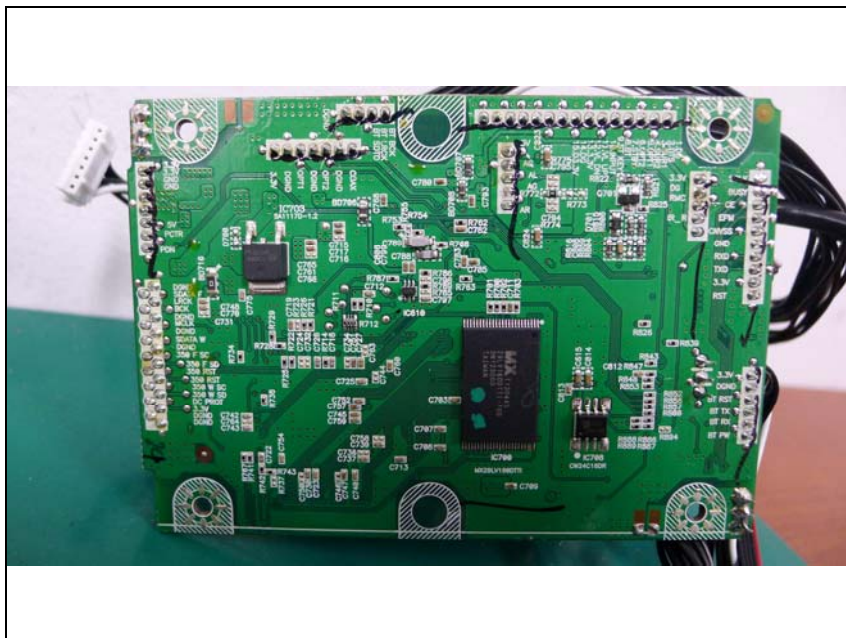
Chip Antenna

BT module

Top view of Main PCB



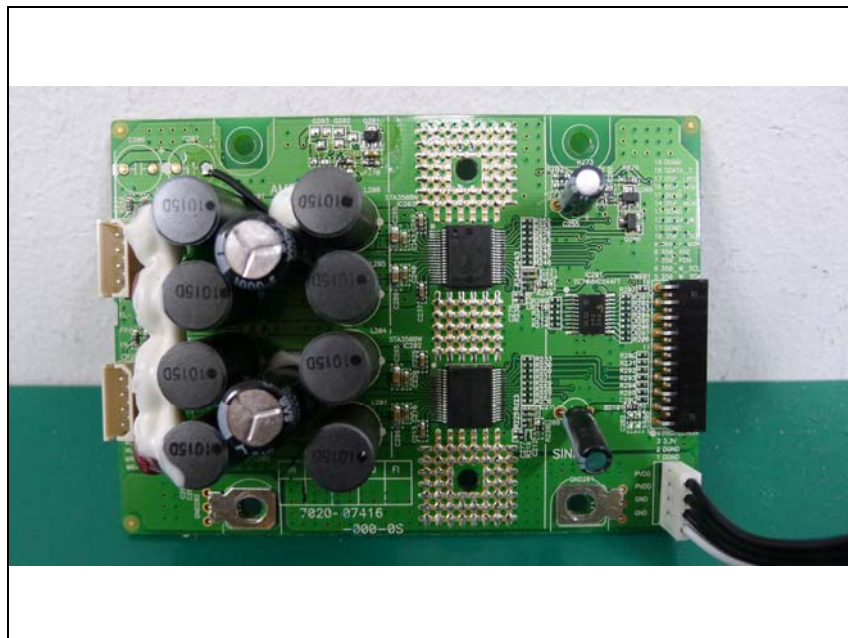
Bottom view of Main PCB



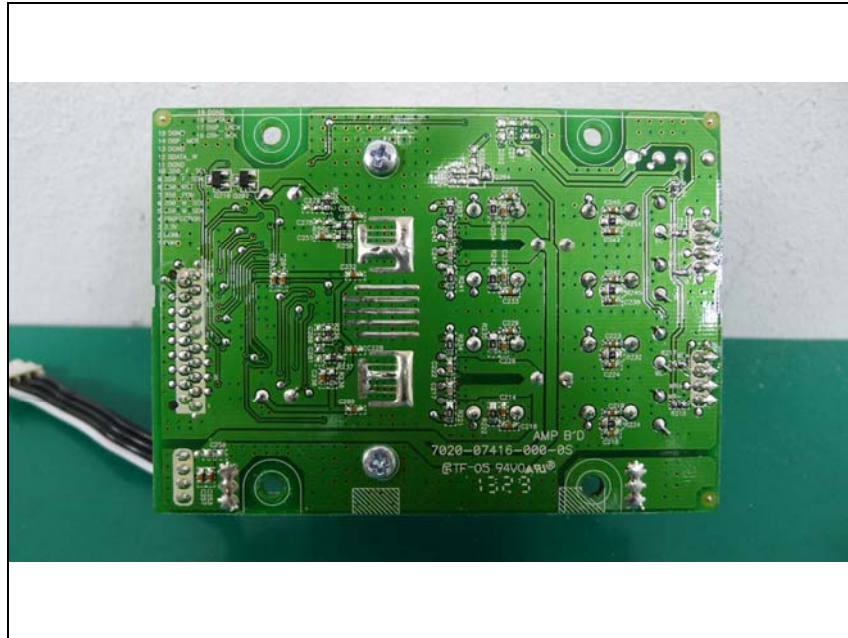
Top view of AMP



Top view of AMP



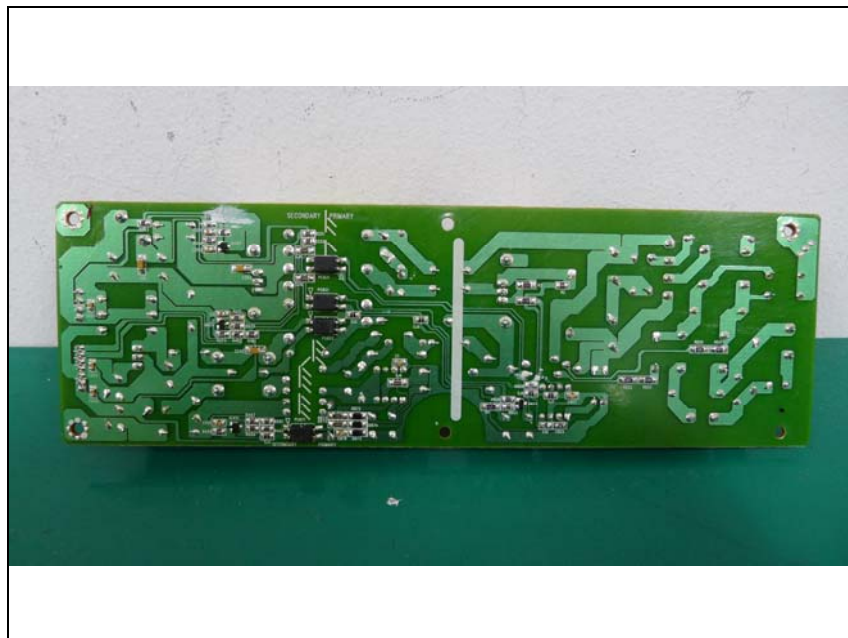
Bottom p view of AMP



Top view of SMPS



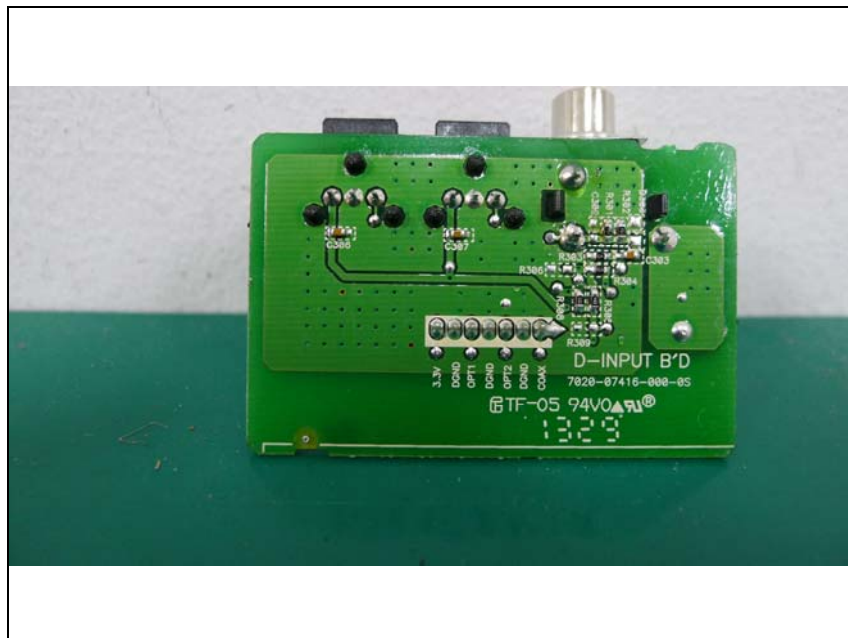
Bottom view of SMPS



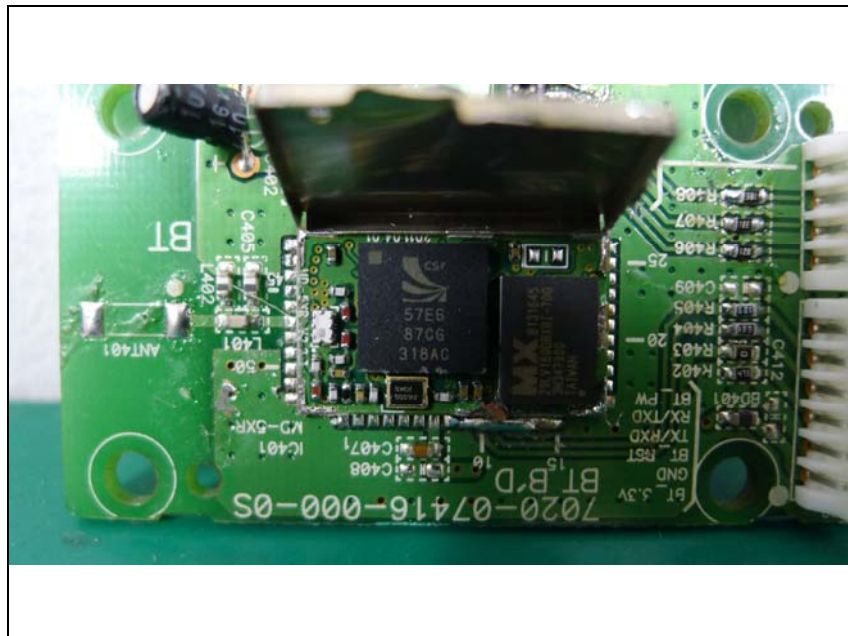
Top view of FRONT



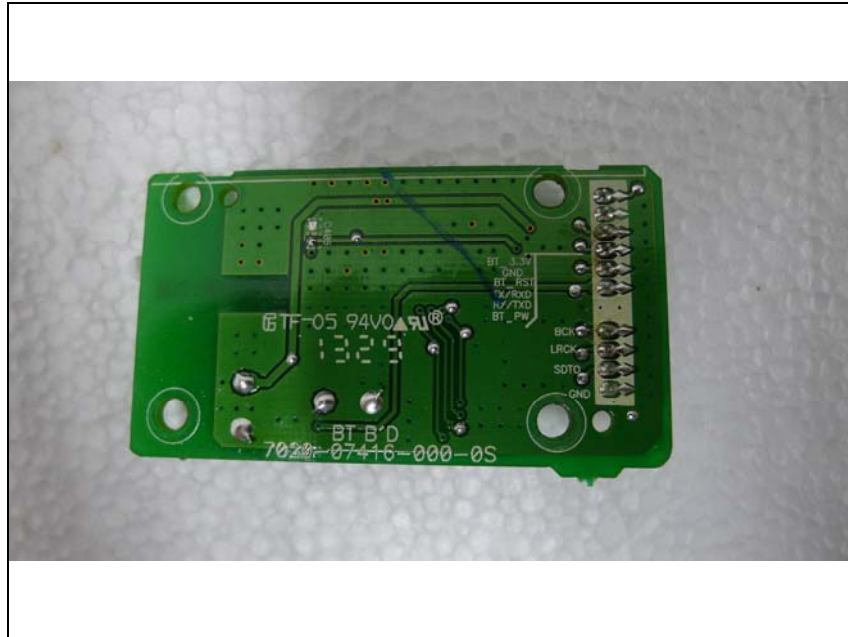
Bottom view of FRONT



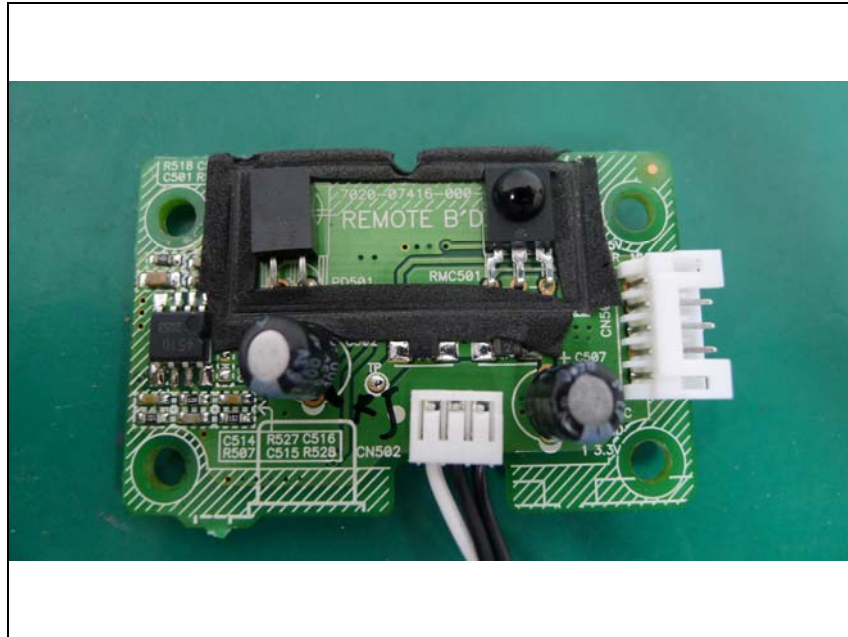
Top view of BT Module



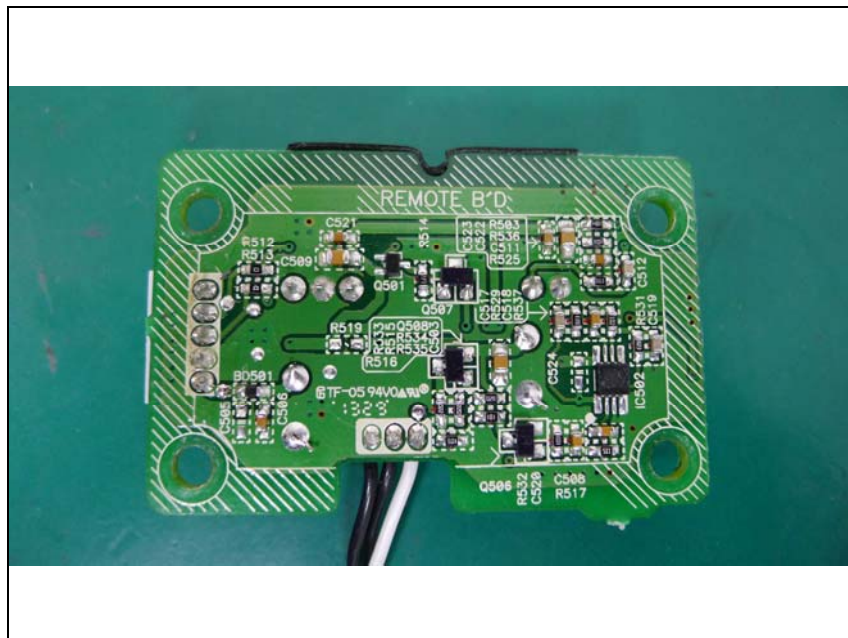
Bottom view of BT Module



Top view of Remote Board



Bottom view of Remote Board



Top view of Input Board



Bottom view of Input Board

