

Customer	inkel	SPECIFICATIONS (仕様書)	Spec. No.	1/8
Parts Name	KIE Design		Model Name	LCD6515RC

### 1.Scope of application

These specification apply to the remote control transmitter (KRC-LCD6515RC)

### 2.Ratings

2-1 Operating voltage range DC3.4V~6.8V

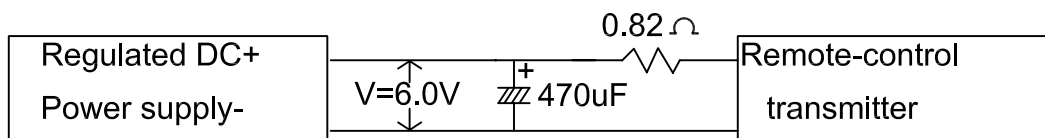
2-2 Operating temperature range -10℃~50℃

2-3 Storage temperature range -20℃~60℃

### 3. Standard Judgment Conditions

Unless otherwise specified,pass/fail judgments are made under the following Conditions,If judgment do not pose any doubt,test may be conducted at room temperature and normal humidity

#### 3-1 Measurement Power Supply



3-2 Measurement temperature : +25℃ ± 3℃

3-3 Measurement humidity : 65% ± 5%(RH)

4. Power Source Used : 4 Size AAA batteries(6.0V DC)

5. Weight : Approx,175g,(excluding the 4 size AAA batteries)

### 6. Constitution

6-1 Dimensions and shapes : in accordance with Assembly Drawing

No, KRC-LCD6515RC

6-2 External appearrance and finish : in accordance with External view drawing

No, KRC-LCD6515RC

6-3 Constituent parts : in accordance with parts list

No, KRC-LCD6515RC

6-4 Packing and packaging : in accordance with packing drawing

No, KRC-LCD6515RC

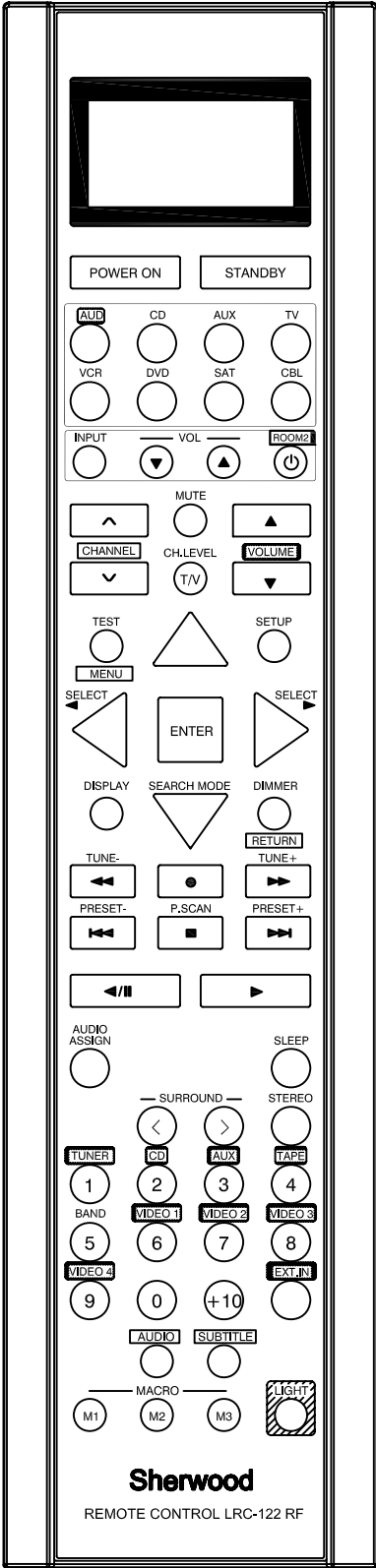
6-5 Circuit : in accordance with circuit diagram

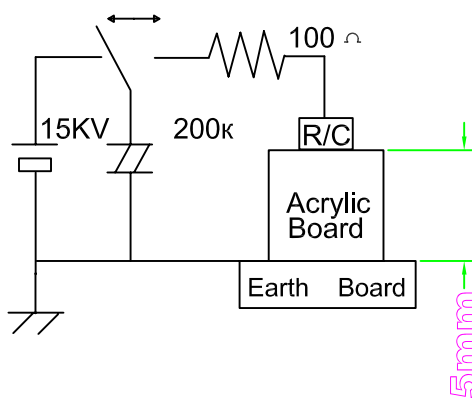
No, KRC-LCD6515RC

Designed	Checked	Approved	Revision	△					Code No.	
				△						
				△					Section	
				No.	Y/M/D	Revision	Sign	App.	Dast	

Customer	inkel	<b>SPECIFICATIONS</b> (仕様書)	Spec. No.	3/8
Parts Name	KIE Design		Model Name	LCD6515RC

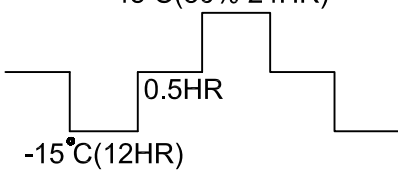
9-2.Key arrangement



Customer	inkel	SPECIFICATIONS (仕様書)	Spec. No.	4/8
Parts Name	KIE Design		Model Name	LCD6515RC
10 . Electrical property				
Item	Rating	Remarks		
10-1 Circuit Leakage Current	45uA or less	VB=6.0V		
10-2 Operating Current	37 mA	VB=6.0V		
10-3 Infrared LED Current	430 +100 -80 mA	VB=6.0V		
10-4 Oscillation Frequency	8.0MHz± 0.5%	VB=6.0V		
10-5 Oscillation Stop Voltage	3.4V or less	VB=6.0V		
10-6 Arrival Distance	3.4V or greater Max Transmission Distance :15M (straight line on horizontal plane)	VB=6.0V VB=6.0V		
10-7 Directionality Arrival Distance	Average Vertical: ± 20% (up&down) Horizontal: ± 20% (right&left)	VB=6.0V		
10-8 Voltage Drift Oscillation Frequency when adjustable	VB=3.4~6.8V 3.2V value ± 0.4 KHZ or less			
10-9 Temperature Drift Oscillation Frequency	Ambient Temperature -10℃~40℃ 25℃value± 1.5kHz or less	VB=6.0V		
10-10 Actual Performance Test	Check to make sure that the correct operations are performed when each key is pressed			
10-11 Electrostatic Destruction Test	± 15KV    No defects 10times    No destruction 			

Customer	inkel	SPECIFICATIONS (仕様書)	Spec. No.	5/8
Parts Name	KIE Design		Model Name	LCD6515RC
11. Structural Performance				
11-1 External Appearance ① Finish  ② Adhesiveness		No faultes in the external appearance. set up a limit sample if necessary  Check to make sure that the finish and printing car with stand having cellophane tape peeled off 3 times.		
11-2 Structure ① Structure  ② Strength		Check to make sure that there are no harmful defects in the structure.  Check to make sure that there are no harmful defects after applying a force of 5kg for 3 seconds to each part of the unit.(case and cover)		
11-3 Pressing Performance ① Operation  ② Operational Load ③ Operational Stroke ④ Over Load		Operation is smoothly, and it have click to push center of button.  When Pressed Vertically    180± 60gr  When Pressed Vertically    0. 7± 0. 4mm  There should be no considerable fault(P.w.b crack,etc) after to push button 3kg 3 seconds.		
11-4 Battery Preservation Performance ① Insertion and Removal  ② Contact  ③ Insertion removal Lifetime		Check to make sure that size AAA batteries can be inserted and removed normally.  Check to make sure that proper electric contacts are made when size AAA batteries are inserted.  Check to make sure that size AAA batteries can be inserted and removed 100 time without abno- malities in the electrical contacts.		
11-5 Battery Cover Performance ① Insertion and removal  ② Insertion removal Lifetime		Check to make sure that the battery cover can be inserted and removed normally.  Check to make sure that the battery cover can be inserted and removed 100 times without obstruction.		

Customer	inkel	SPECIFICATIONS (仕 样 书 )	Spec. No.	6/8
Parts Name	KIE Design		Model Name	LCD6515RC
12 . Guarantee Performance				
12-1 Heat Resistance  ① Circuit Current ② Operating Current ③ Infrared Led Current ④ Oscillation Frequency ⑤ Oscillation Stop Voltage ⑥ Arrival Distance ⑦ Actual Performance ⑧ External Appearance ⑨ Structural Performance ⑩ Pressing Performance ⑪ Battery Preservation Performance ⑫ Battery cover Performance	10uA or less Initial value ± 5mA Initial value± 40mA Initial value ± 1KHZ 3.4 V or less 15m or greater  All operations are performed properly  No harmful defects No harmful defects 11-3 items ① ② and ③ 11-4 items ①and ②  11-5 items ①is satisfied.	Expose to constant temp -erature and humidity of 60± 3 ℃ for 72 hours without load. Perform measurements after leaving at normal temperature humidity for 1 hour.		
12-2 Resistance to humidity	Same as 12-1	Expose to constant temp -eratur and humidity of 60℃, 90~95% for 72 hours without load. Perform measurements after leaving at normal temperature and humi -dity for 40 minute.		
12-3 Resistance to cold	Same as 12-1	Expose to constant tempe -rature of -40℃ for 72 hours without load. Perform measurements after leaving at normal temperature and humi -dity for 1 hour.		

Customer	inkel	SPECIFICATIONS (仕様書)	Spec. No.	7/8
Parts Name	KIE Design		Model Name	LCD6515RC
12 . Guarantee Performance				
12-4 Resistance to Heat shock	Same as 12-1	<p>Perform the following cycle 2 times without load. Perform measurements after leaving at normal temperature and humidity for 1 hour.</p> <p>45℃(30% 24HR)</p>  <p>-15℃(12HR)</p>		
12-5 Load Lifetime Performance	Same as 12-1	Operate 50,000times continuously with size AAA batteries inserted at a speed of 30-60 times per minute.		
12-6 Drop performance  ① Actual performance test  ②Arrival Distance  ③Structure	<p>Check to make sure that functions are performed properly.</p> <p>7m or greater (Same as 10-6)</p> <p>Make sure that the pattern dose not come off and that there are no conspicuous defects in external appearance.</p>	<p>Place the unit in the center of wooden board 30cm square and 3cm thick then drop the unit at dead weight from a height of 70cm once for each surface (total 6 times)with size AAA battery inserted.</p>		
12-7 Vibration Performance	Same as 12-1	<p>Amplitude 2mm at 1500cpm</p> <p>Apply in each of the X,Y,and Z axis for 30 minutes with size AAA batteries inserted.</p>		

Customer	inkel	<b>SPECIFICATIONS</b> (仕様書)	Spec. No.	8/8
Parts Name	KIE Design		Model Name	LCD6515RC

12 . Guarantee Performance

14. Containing the Hazardous materials

14-1 Hazardous materials

Pb / Cd / Hg / Cr6+ / PBB / PBDE

14-2 This product, assembly or component does not contain any of the above mentioned material.