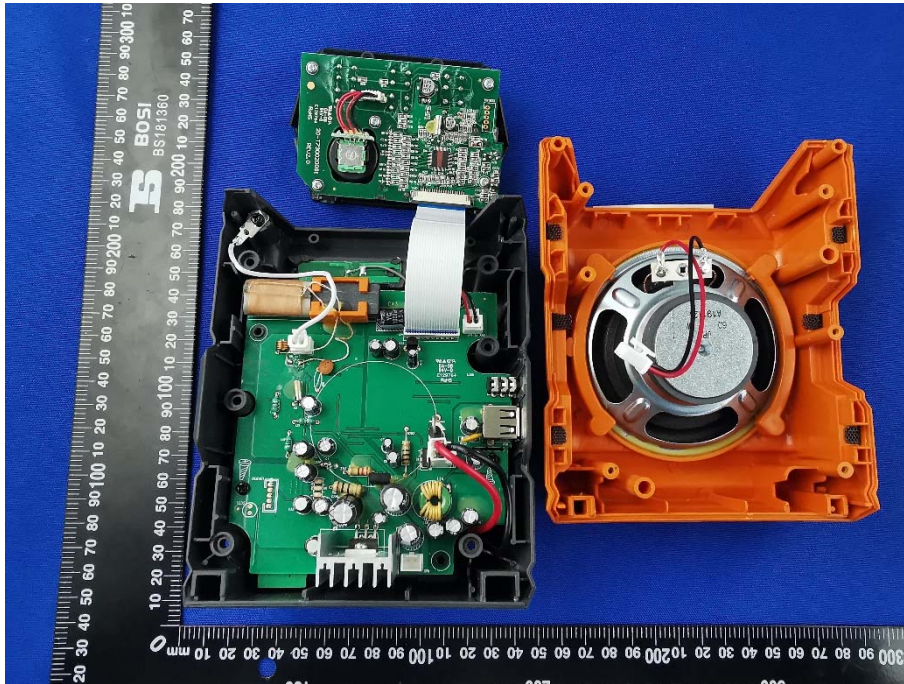
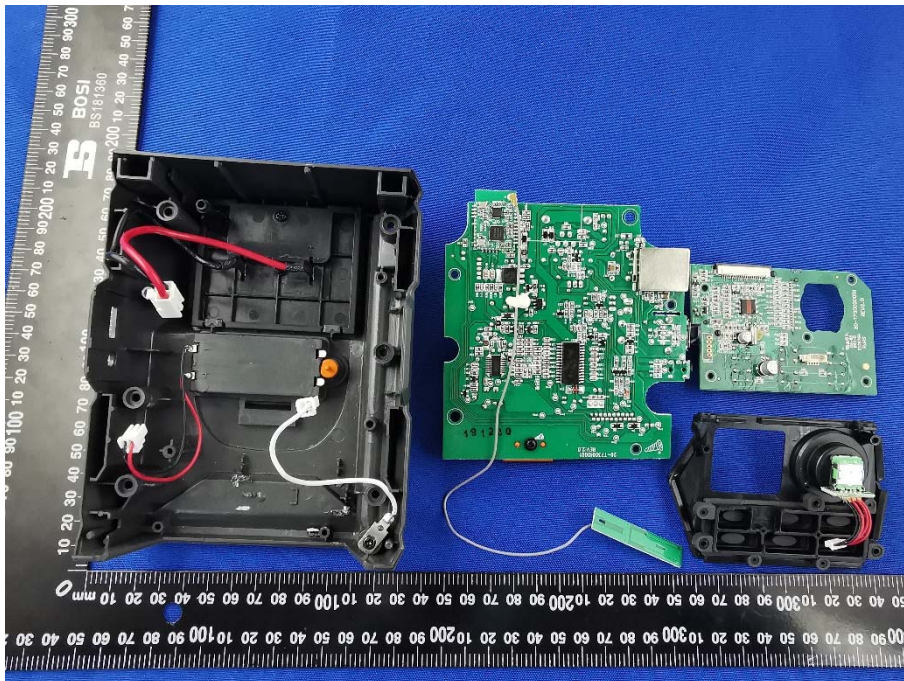


EUT INTERNAL PHOTOS

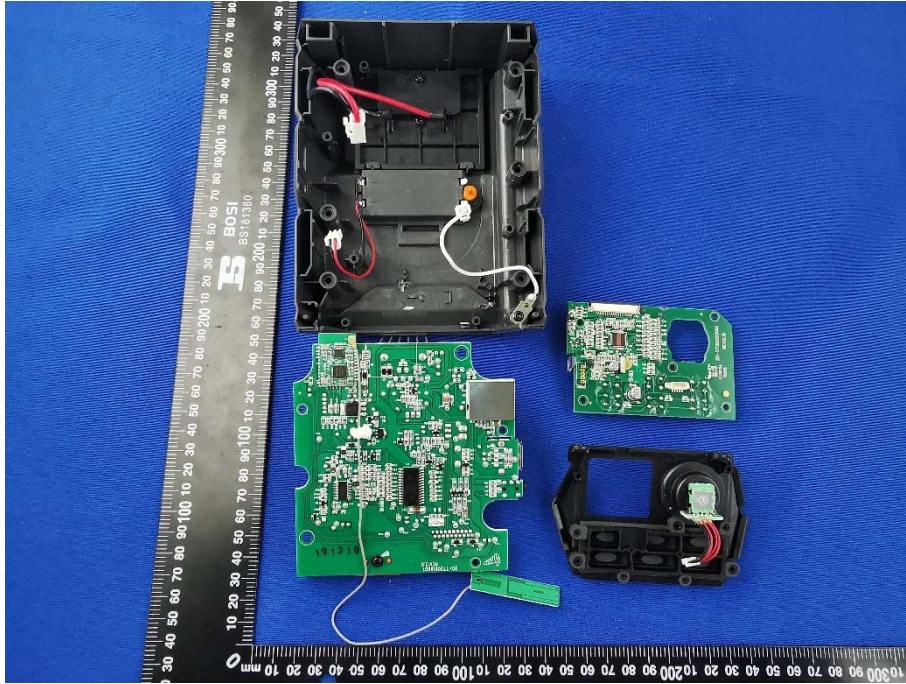
EUT UNCOVER VIEW



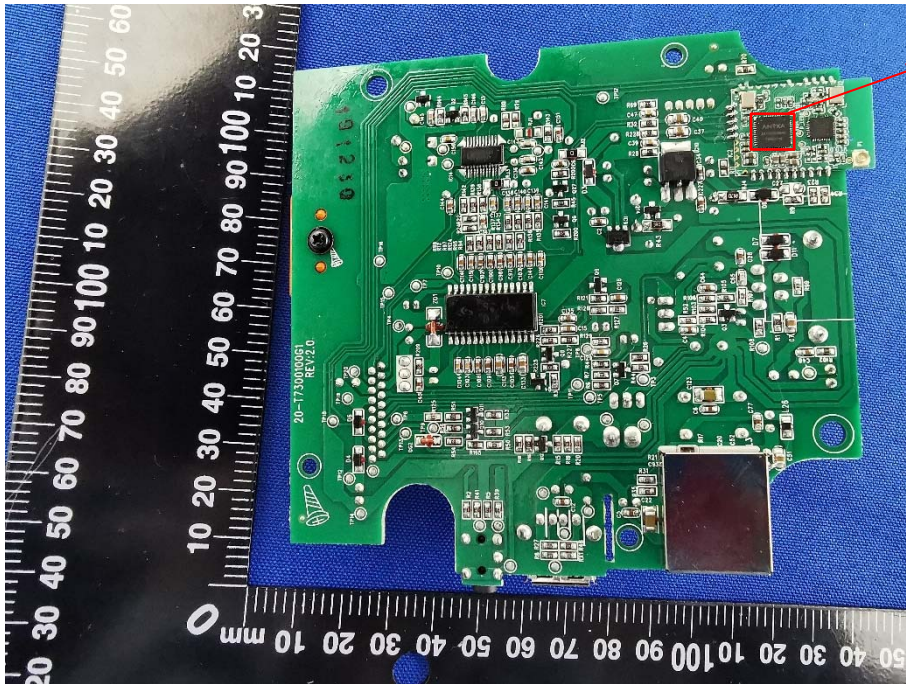
EUT UNCOVER VIEW



EUT UNCOVER VIEW

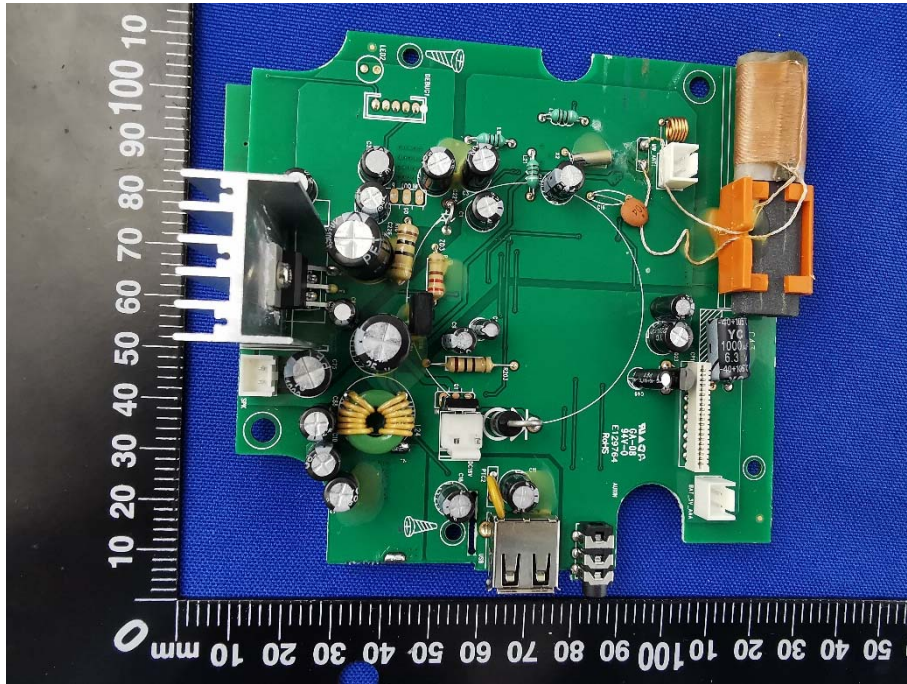


MAIN BOARD TOP VIEW

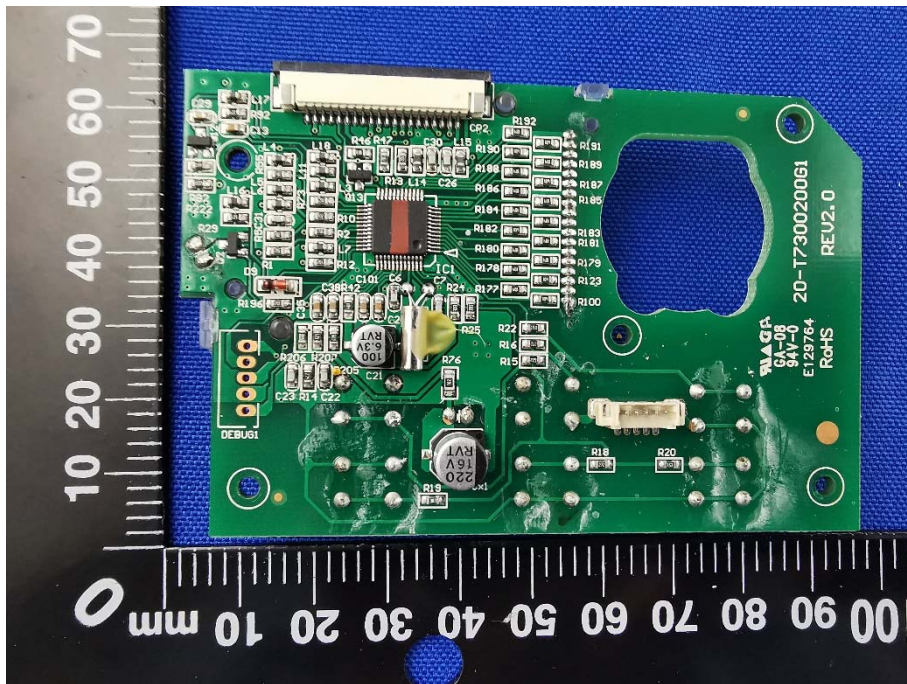


RF Chip

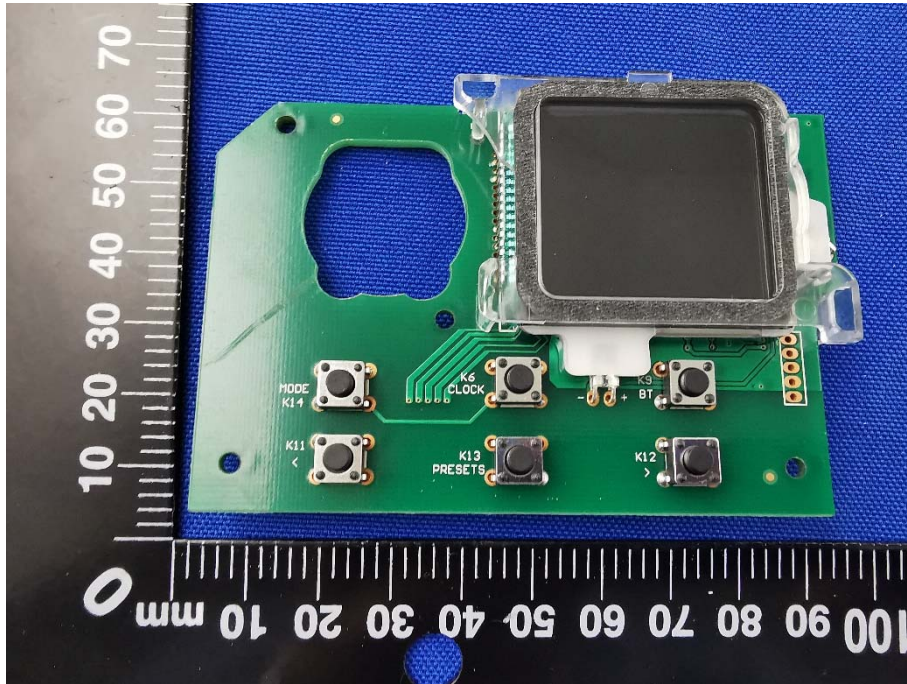
MAIN BOARD REAR VIEW



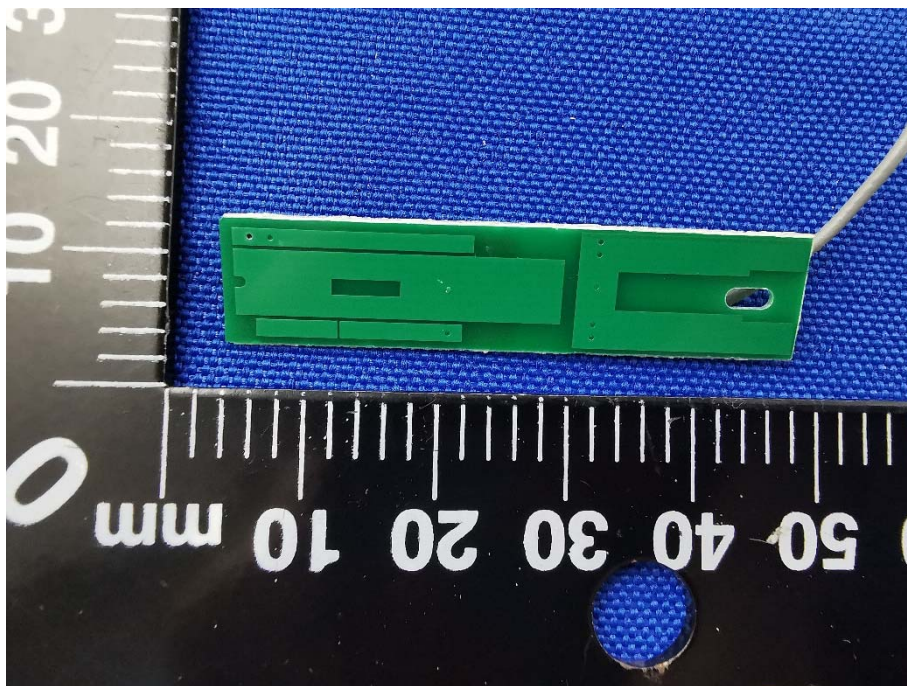
MAIN BOARD TOP VIEW



MAIN BOARD REAR VIEW



PCB Antenna (FRONT)



PCB Antenna (REAR)

