



Quick Start Guide

EN

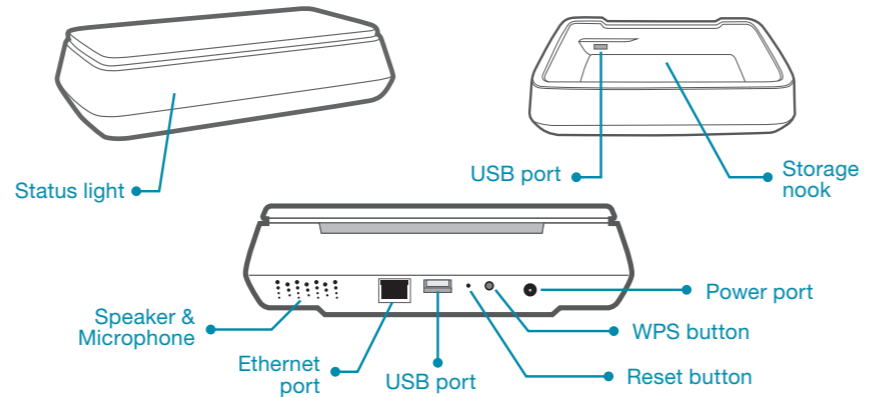


Smart Hub

Read me first

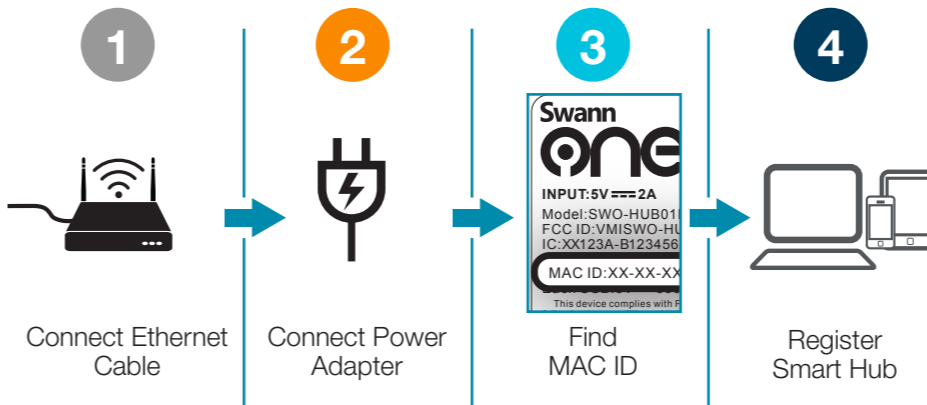
At a Glance

Thank you for choosing the SwannOne™ Smart Hub. Please take a moment to familiarize yourself with the key areas of the hub.



The USB ports are ideal for charging most smartphones and portable USB devices.

Get Started in Four Easy Steps



Questions? Get more information regarding the setup and use of your SwannOne products on the web at swannone.com, or simply email us at support@swannone.com.

SwannOne Warranty
Your SwannOne products are backed by a full 12 month guarantee from the date of purchase. In the unlikely event of anything going wrong, you can have confidence that your purchase is protected. Refer to swannone.com for terms and conditions.

FCC Statement
This device complies with part 15 of the FCC Rules. Operation is subject to the following two conditions: (1) This device may not cause harmful interference, and (2) This device must accept any interference received, including interference that may cause undesired operation.

Operating temperature: -4C to 45C, 90% relative humidity

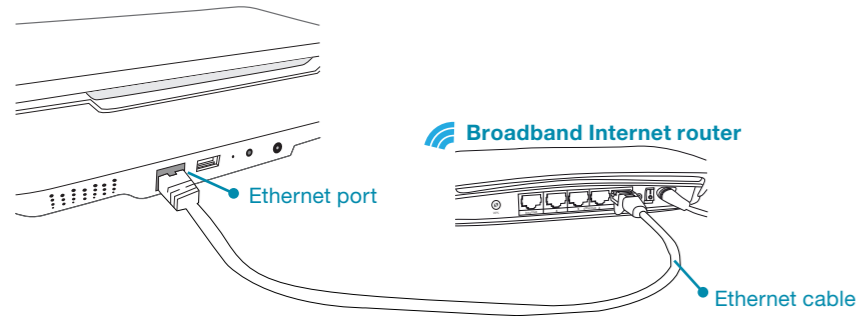
Battery Safety Information
CAUTION: RISK OF EXPLOSION IF BATTERY IS REPLACED BY AN INCORRECT TYPE. DISPOSE OF USED BATTERIES ACCORDING TO THE INSTRUCTIONS.

Disposal and Recycling Information
Correct Disposal of this product. This marking indicated that this product should not be disposed with other household wastes throughout the EU. To prevent possible harm to the environment or human health from uncontrolled waste disposal, recycle it responsibly to promote the sustainable reuse of material resources. To return your used device, please use the return and collection systems or contact the retailer where the product was purchased. They can take this product for environment safe recycling.



1 Connect Ethernet Cable

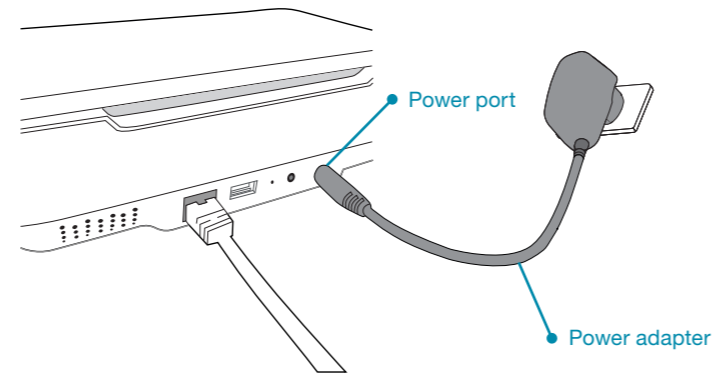
Connect the Smart Hub directly to your broadband router with the included Ethernet cable.



The Ethernet cable is only required for initial setup. Configure the Smart Hub to connect to your Wi-Fi network directly during registration then go wireless.

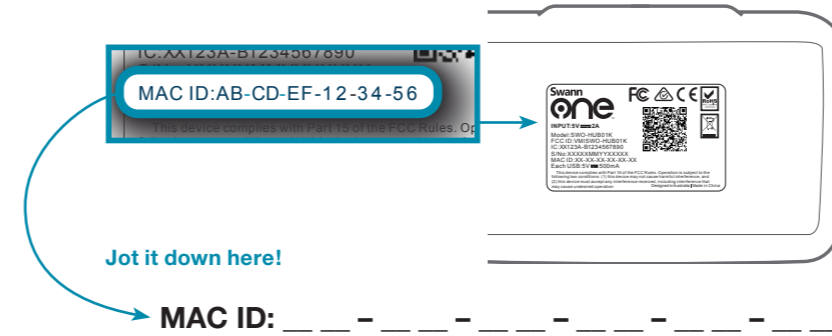
2 Connect Power Adapter

Plug the included power adapter into a power outlet and connect it to the Smart Hub



3 Find MAC ID

There is an information label located on the bottom of the Smart Hub containing all the little details about your hub including it's MAC ID. You will need the MAC ID during registration, so have it ready on hand. It looks something like the example below.

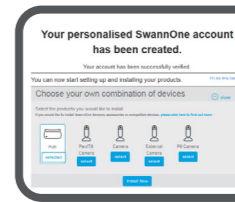


4 Register Smart Hub

Creating a SwannOne Account

Before you can register the Smart Hub, you will need to create a SwannOne account. Your SwannOne account is what you use to control and manage all your SwannOne devices and services from anywhere.

To sign up for a free account, go to home.swannone.com from your PC, Mac, smartphone or tablet.



Installing the Smart Hub

Log in to your new SwannOne account at home.swannone.com and then follow the on-screen instructions to add the Smart Hub to your SwannOne account.



If the Smart Hub is not connecting as expected, try performing a hard reset by using a straightened paperclip to depress the **Reset** button while holding the **WPS** button until the status light on the front of the Smart Hub goes off.

FCC statement

Warning: Changes or modifications to this unit not expressly approved by the party responsible for compliance could void the user's authority to operate the equipment.

NOTE: This equipment has been tested and found to comply with the limits for a Class B digital device, pursuant to Part 15 of the FCC Rules. These limits are designed to provide reasonable protection against harmful interference in a residential installation. This equipment generates, uses and can radiate radio frequency energy and, if not installed and used in accordance with the instructions, may cause harmful interference to radio communications.

However, there is no guarantee that interference will not occur in a particular installation. If this equipment does cause harmful interference to radio or television reception, which can be determined by turning the equipment off and on, the user is encouraged to try to correct the interference by one or more of the following measures:

- Reorient or relocate the receiving antenna.
- Increase the separation between the equipment and receiver.
- Connect the equipment into an outlet on a circuit different from that to which the receiver is connected.
- Consult the dealer or an experienced radio/TV technician for help.

"FCC RF Radiation Exposure Statement Caution: To maintain compliance with the FCC's RF exposure guidelines, place the product at least 20cm from nearby persons."

To comply with FCC's RF radiation exposure limits for general population/uncontrolled exposure, the antenna(s) used for this transmitter must be installed to provide a separation distance of at least 20 cm from all persons and must not be collocated or operating in conjunction with any other antenna or transmitter

Shielded cables must be used with this unit to ensure compliance with the Class B FCC limits.