

**VERVE**  
ONES ME  
**VERVE**  
ONES ME+

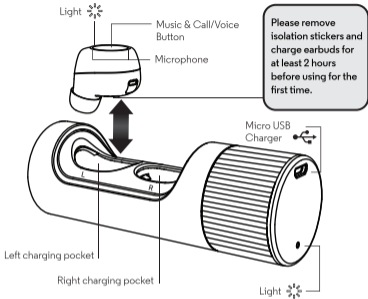
Read me first

Check [www.verve.life](http://www.verve.life) for  
latest product QSG and details





## Your wireless earbuds and charge case



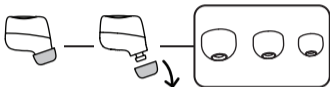
**Note:** Twist the case to open it. The case indicates which earbud is left and right. Right earbud is the master earbud and connects to your device, the left earbud automatically connects to the right earbud when it turns on.

Earbuds turn off and charge when placed back in the case.

## Wear

### Best fit & best sound

Try all the gels to find the best fit and the best sound. The fit is right when you get a complete seal, the gel feels comfortable in your ear, and you get the best quality and loudest sound.



**Tip:** More than one gel size may fit you. Choose the one that completely seals your ear canal for the best sound.

**Note:** You may need different size gels for left and right.

### Wear

Insert the earbuds with the ear gel directed towards your ear canal. Twist gently until they fit comfortably and feel secure in your ear.

**Note:** When you take the earbuds out of the case, you have 5 minutes to put them on, or they go into idle mode. Put them in the case to wake them back up.



## Pair with Bluetooth

1



Turn on Bluetooth on your device.

2



### First-time pairing

Take both wireless earbuds out of the case, press and hold the buttons on both earbuds until blue LED lights up, then release the buttons. (Right earbud will then flash blue/ red alternately, and left earbud will flash red)

3



On your device, go to the Bluetooth menu, select VerveOnes ME, pair & connect. After device paired, voice prompt "paired" will be heard. When the right earbud is connected to the device, you will hear a voice prompt "VerveOnes Connected".

**Tip:** The left earbud pairs with the right earbud automatically. You will hear "Earbuds linked" when they are paired.

**Note:** Only the right earbud will connect to your device. The right earbud may also be used as a single headset. Certain versions of this headset may only have tones and no voice prompts.

### Auto Reconnect

VerveOnes ME will automatically reconnect to the last paired device after it is removed from the case and turned on. VerveOnes ME can be found and paired with other device if the last paired device is out of range 10 seconds after it is turned on. (repeat above step 3)

## Music

Start playing music on your music player and then control it with either earbud.



- Play/ Pause Music - Press once.
- Next Track - Press and hold (1-3 seconds) button on right earbud.
- Previous Track - Press and hold (1-3 seconds) button on left earbud.
- Change EQ - Triple press button on right earbud to hear the Equalizer options.

**Note:** Playing the next or previous track depends on your music player or app.

## Calls & Call Waiting

You can press the right earbud to make and answer calls.



- Answer/End Call - Press button on right earbud once.
- Reject Call - Press and hold button on right earbud when there is an incoming call.
- When there is a second incoming call:
  - Answer and hold existing call - Press button on right earbud once.
  - Reject second incoming call - Press and hold button on right earbud.

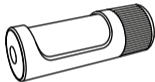
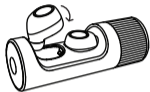
**Note:** All calls will be heard in the right earbud only. Volume can be adjusted during the phone call by double pressing the right earbud (volume up) or left earbud (volume down). If only the right earbud is used for a phone call (left earbud is not connected to right earbud), volume can be adjusted cyclically by double pressing the right earbud.

## Charge

### Charge the earbuds

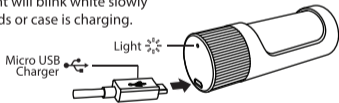
Put the earbuds into the case and press them firmly until you hear a click and the earbud lights turn on.

**Tip:** Earbuds are designed to fit snugly into the case. You may need to push the earbuds from the sides to remove.



### Charge the case

Charge the case and earbuds by plugging in the charging cable. The case light will blink white slowly when earbuds or case is charging.



## Battery charging tips and precautions

- If the earbuds and the charging case are completely discharged, it may take a while for them to start charging.
- If you plan to store your device for longer than three months, charge it to 50% every three months.



## Charge level

Your earbuds let you know when your battery level is low. You'll hear a low battery voice prompt/ tone when there is 15 minutes of battery left.

### Earbud status lights (inside charging case)

Charging	Slow blinking red
Full charge	Steady blue for 1 minute and then off

### Earbud status lights

Music Playback/ in phone call	Slow blinking blue
Incoming call/ outgoing call	Fast blinking blue
Need charging	Change to red
Pairing	Blue & red flash alternately

### Case status lights

When your case is plugged into a wall charger or USB power source, you'll see charging lights.

Charging	Slow blinking white
Full charge	Steady white for 1 minute and off
Need charging	Blinking red

**Note:** Case light will blink white slowly when it is charging the earbuds inside even there is no power source connected. Your battery is designed to last the lifetime of the product. It should only be removed by a recycling facility. Any attempt to remove or replace your battery will damage the product and void your warranty.

## Hubble Connect™ for VerveLife™

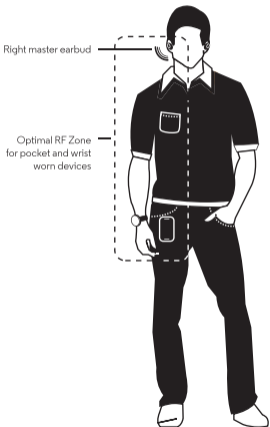
Hubble Connect for VerveLife can greatly enhance your earbud experience. Download app for free at the App Store® or Google Play™ (Android™ 4.4.4 or higher)

- **Locate a lost earbud:** Locate on a map the last time your earbuds were connected to your device.
- **Help:** Get answers.

**Note:** Application feature may change over time, please download the latest version of the app to see all current feature supported.

## Get best connection

To optimize bluetooth connection and minimize drops, keep your device in the optimal RF zone.



## Use this product responsibly

VerveOnes ME are designed to give the user great sounding wireless earbuds. However the product should be used responsibly.

### Safety instructions for use



To avoid hearing damage, keep the volume at a moderate level. Avoid listening to music at loud volume levels for prolonged periods of time as this may cause permanent hearing damage or hearing loss.

Your hearing is delicate and highly sensitive so please listen to your music responsibly. For more information visit the Deafness Research Foundation [www.drf.org](http://www.drf.org)

Don't use VerveOnes when it is unsafe to do so. For example, while operating a vehicle, cycling, crossing a road, or any activity which requires your attention and ability to hear.

You should be aware of your surroundings and use VerveOnes responsibly.

## Help & more

- **Get help:** Visit [www.motorolahome.com/support](http://www.motorolahome.com/support) or visit [www.verve.life](http://www.verve.life) for help videos, FAQ's and more.
- **Find accessories at:** [www.motorolahome.com](http://www.motorolahome.com) or [www.verve.life](http://www.verve.life)

**Note:** If you're watching video while using your earbuds, your audio may be slightly out of sync with your video.

1) Patent Pending: ZL 2016 2 0294181.8 / ZL 2016 1 0219720.6

2) Patent Pending: ZL 2016 2 1052765.0 / ZL 2016 1 0820151.0

Manufactured, distributed, or sold by Binatone Electronics International LTD., official licensee for this product. MOTOROLA and the Stylized M logo are trademarks or registered trademarks of Motorola Trademark Holdings, LLC. and are used under license. Apple logo is a trademark of Apple Inc., registered in the U.S. and other countries. App Store is a service mark of Apple Inc. Google Play and Android are trademarks of Google Inc. All other trademarks are the property of their respective owners. © 2016 Motorola Mobility LLC. All rights reserved.

Product ID: SH010

Bluetooth ID: D032279

FCC ID: VLJ-SH010

IC : 4522A-SH010

Hardware Version: V01

**CAUTION**  
**RISK OF EXPLOSION IF BATTERY IS REPLACED**  
**BY AN INCORRECT TYPE.**  
**DISPOSE OF USED BATTERIES ACCORDING**  
**TO THE INSTRUCTIONS**





[www.motorolahome.com](http://www.motorolahome.com)

[www.verve.life](http://www.verve.life)

