

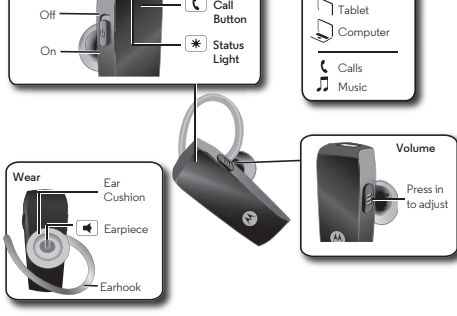


motorola

HK255 User Guide

At a glance

the important bits, quick and easy

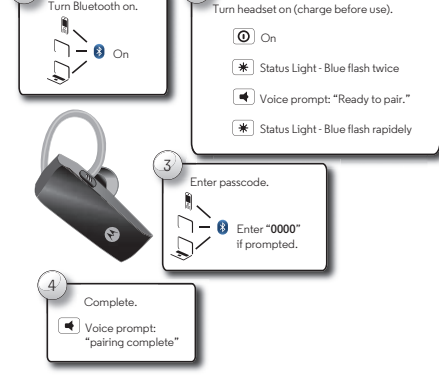


Note: Your battery is designed to last the life of your product. It should only be removed by a recycling facility. Any attempt to remove or replace your battery will damage your headset.

Note: Fully charge before use.

Connect & go

let's get you connected



Tip: For daily use, just make sure your headset is on, and your phone's Bluetooth feature is on. Your headset and phone connect automatically.

Basics

standard features, advanced quality

Calls

To...	
answer a call	Press .
reject a call	Press and hold until you hear a tone.
make a voice dial call	Press and you hear a tone.
redial last call	Press and hold until you hear a tone.
mute or unmute	Press and hold the Volume button .
end a call	Press .

Note: Some features are phone/network dependent.

Note: Using a mobile device or accessory while driving may cause distraction and may be illegal. Always obey the laws and drive safely.

Advanced

more clever stuff

Second device

Using two phones? Or maybe a tablet and a phone? Pair with two devices.

- Before pairing the second device, turn off the Bluetooth feature of the previously paired device. Now pair your second device as normal, see **"Connect & go"**.
- Once paired, to connect to both devices simply turn them on.
- To use headset features, such as voice dial, and end call, with the desired device, just use the feature as normal.

Status light

An easy way to check your headset.

status light	headset
blue flashes twice	turning on/off
rapid blue flashes	connecting to your device
rapid red flashes	battery low
steady red	charging - low battery level
steady purple	charging - mid battery level
steady blue	charging - battery full

Help & more

- **Get help:** Visit www.motorolahome.com/support
- **Find accessories at:** www.motorolahome.com

Manufactured, distributed, or sold by Binatone Electronics International LTD., official licensee for this product. MOTOROLA and the Stylized M Logo are trademarks or registered trademarks of Motorola Trademark Holdings, LLC. and are used under license. Apple logo is a trademark of Apple Inc., registered in the U.S. and other countries. App Store is a service mark of Apple Inc. Google Play and Android are trademarks of Google Inc.

All other trademarks are the property of their respective owners.

© 2016 Motorola Mobility LLC. All rights reserved.

Product ID: MH002

Bluetooth ID: MH002

FCC ID: VLJ-MH002

IC ID: 4522A-MH002