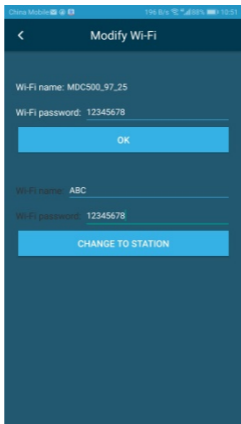


10. Tap “MODIFY”, the following screen appears:



11. Enter your hotspot name and password, then tap “CHANDE TO STATION”, and then go to open your hotspot(Ensure hotspot name and password correct), the following screen appears:

Tethering & portable hotspot

Portable WLAN hotspot >

WLAN bridge
Share current WLAN network with other devices Off >

Bluetooth tethering
Not sharing this phone's Internet connection

USB tethering
USB not connected

Settings

ABC

HOTSPOT SETTINGS

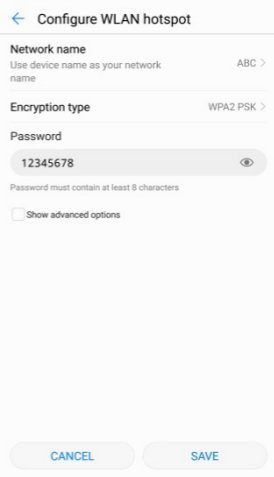
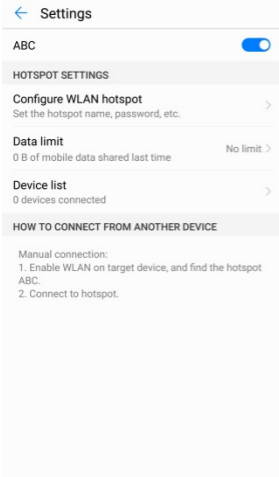
Configure WLAN hotspot >
Set the hotspot name, password, etc.

Data limit No limit >
0 B of mobile data shared last time

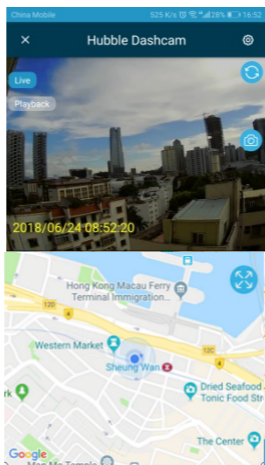
Device list >
0 devices connected

HELP

1. You can use a portable WLAN hotspot device as your Internet access point. Peripherals can be connected to your device through WLAN and connected devices will access the Internet through the mobile network.
2. Using a portable WLAN hotspot will require your mobile data connection to be enabled, and will consume some data.
3. Using a portable WLAN hotspot may drain your battery faster.

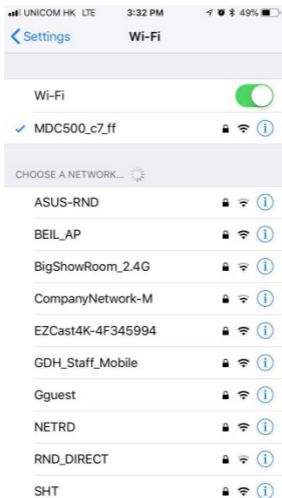


12. Go to re-open the APP, then you can see your location and speed, following screen appears:

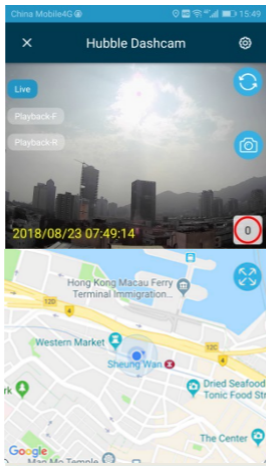


5.3.2 On iOS Smartphone

1. Go to Settings > Wi-Fi and select "MDCxxx_xxxxxxxx" from the list of networks.
2. Enter password (the default password is 12345678) and tap Join.
3. The following screen appears:



4. Open Hubble Dashcam app, and tap “Connect to the dashcam” to connect your smartphone.
5. Once connected successfully, the View Finder and Main control panel appear as below:





6. *Live Mode*



The following instructions and screenshots show how things work and look using Android phones. However, the basic steps should still work for iOS phones.

Although Hubble Dashcam app has been designed to be viewed in portrait mode as you would normally use your phone, some functions are best viewed when your phone is rotated to landscape mode, such as: Live View and when watching recordings.



<p>Live (Displayed on top left corner) Current Mode: background blue.</p>	<p>Live: screen shows real-time live stream from Dashcam. Red dot flashing: loop recording mode. Speed mark: displayed current speed.</p>
<p>Camera Switch (Displayed on top right corner)</p>	<p>Tap  to switch camera between Front and Rear.</p>
<p>Take photo</p>	<p>This allows you to take photo of a live video, and save it in your Dashcam. Tap  to take photo.</p>

Map and Location

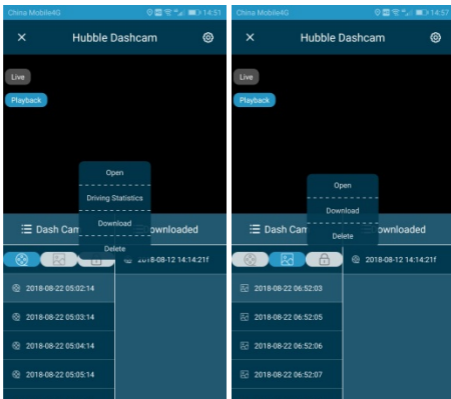
 indicated Dashcam current location.
Tap  to zoom in and zoom out.

Note:

Functions and features in Hubble Dashcam app are subject to change without notice.

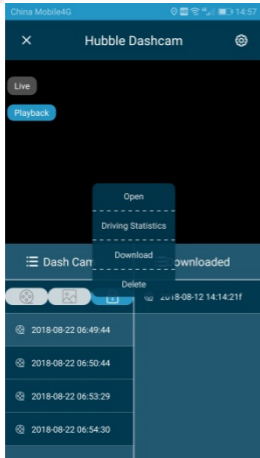
7. Playback Mode

To access Playback Mode, tap the Playback icon while in Live Mode.

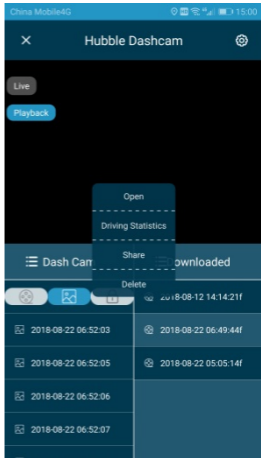


(1)

(2)



(3)



(4)


Dash Cam

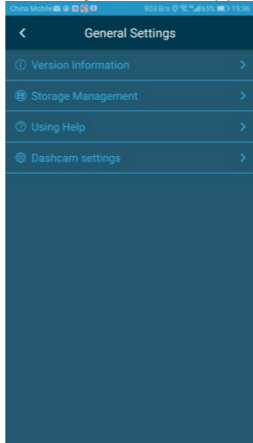
Here have 3 folders((1)Normal video, (2)Photo, (3)Event video) under the Dash Cam, these files saved in the dashcam SD card, tap to select Video or Photo, the option menu will be pop-up: Open / Download / Delete / Cancel.



Downloaded

These files (4) had been downloaded and save in the smartphone, tap to select Video or Photo, the option menu will be pop-up: Open / Share / Delete / Cancel.

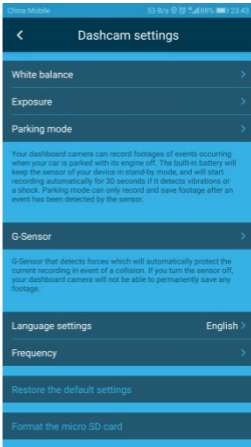
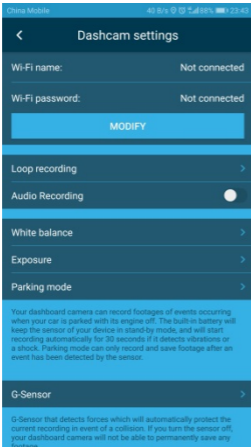
8. General Settings

To access settings, tap  (Displayed on top right corner) while in Live Mode, following screen will appear.



Tap  to view more information or options. Tap  back to Live Mode.

Tap on Dashcam Settings, and the following screen will appear.



The default settings have been chosen for best performance. However, you can also change them based on your needs, and you can do it on dashcam.

IMPORTANT!

If you modified the WiFi password and forgot, follow this way to get it back:

Turn On the Dashcam and enter into the Main settings, roll to the Default Setting option and confirm restore, restart the Dashcam, then the Wi-Fi password of the dashcam will be restored to 12345678.

9. Disposal of the Device (Environment)

At the end of the product life cycle, you should not dispose of this product with normal household waste. Take this product to a collection point for the recycling of electrical and electronic equipment. The symbol on the product, user's guide and/or box indicates this.



Some of the product materials can be re-used if you take them to a recycling point. By reusing some parts or raw materials from used products you make an important contribution to the protection of the environment.

Please contact your local authorities in case you need more information on the collection points in your area.

Dispose of the battery pack in an environmentally-friendly manner according to your local regulations.

10. General Information

If your product is not working properly....

1. Read this User's Guide.
2. Visit our website: www.motorolastore.com/support.
3. Contact Customer Service at
+44 (0) 844 557 0890 (UK only)*
**Calls cost 7p per minute plus your telephone company's access charge*
Mon - Fri 8:00am to 8:00pm
Sat 8:30am to 2:00pm
+44 (0) 8187 62092 (ROI)
Email: support@motorolastore.com

Consumer Products and Accessories Limited Warranty ("Warranty")

Thank you for purchasing this Motorola branded product manufactured under license by Binatone Electronics International LTD ("BINATONE").

What Does this Warranty Cover?

Subject to the exclusions contained below, BINATONE warrants that this Motorola branded product ("Product") or certified accessory ("Accessory") sold for use with this product that it manufactured to be free from defects in materials and workmanship under normal consumer usage

for the period outlined below. This Warranty is your exclusive warranty and is not transferable. THIS WARRANTY GIVES YOU SPECIFIC LEGAL RIGHTS, AND YOU MAY HAVE OTHER RIGHTS THAT VARY BY STATE, PROVINCE OR COUNTRY. FOR CONSUMERS WHO ARE COVERED BY CONSUMER PROTECTION LAWS OR REGULATIONS IN THEIR COUNTRY OF PURCHASE OR, IF DIFFERENT, THEIR COUNTRY OF RESIDENCE, THE BENEFITS CONFERRED BY THIS LIMITED WARRANTY ARE IN ADDITION TO ALL RIGHTS AND REMEDIES CONVEYED BY SUCH CONSUMER PROTECTION LAWS AND REGULATIONS. FOR A FULL UNDERSTANDING OF YOUR RIGHTS YOU SHOULD CONSULT THE LAWS OF YOUR COUNTRY, PROVINCE OR STATE.

Who is covered?

This Warranty extends only to the first consumer purchaser, and is not transferable.

What will BINATONE do?

BINATONE or its authorised distributor at its option and within a commercially reasonable time, will at no charge repair or replace any Products or Accessories that do not conform to this Warranty. We may use functionally equivalent reconditioned/ refurbished/ pre-owned or new Products, Accessories or parts.

What Other Limitations Are There?

ANY IMPLIED WARRANTIES, INCLUDING WITHOUT LIMITATION THE IMPLIED WARRANTIES OF MERCHANTABILITY AND FITNESS FOR A PARTICULAR PURPOSE, SHALL BE LIMITED TO THE DURATION OF THIS LIMITED WARRANTY, OTHERWISE THE REPAIR OR REPLACEMENT PROVIDED UNDER THIS EXPRESS LIMITED WARRANTY IS THE EXCLUSIVE REMEDY OF THE CONSUMER, AND IS PROVIDED IN LIEU OF ALL OTHER WARRANTIES, EXPRESS OR IMPLIED. IN NO EVENT SHALL MOTOROLA OR BINATONE BE LIABLE, WHETHER IN CONTRACT OR TORT (INCLUDING NEGLIGENCE) FOR DAMAGES IN EXCESS OF THE PURCHASE PRICE OF THE PRODUCT OR ACCESSORY, OR FOR ANY INDIRECT, INCIDENTAL, SPECIAL OR CONSEQUENTIAL DAMAGES OF ANY KIND, OR LOSS OF REVENUE OR PROFITS, LOSS OF BUSINESS, LOSS OF INFORMATION OR OTHER FINANCIAL LOSS ARISING OUT OF OR IN CONNECTION WITH THE ABILITY OR INABILITY TO USE THE PRODUCTS OR ACCESSORIES TO THE FULL EXTENT THESE DAMAGES MAY BE DISCLAIMED BY LAW.

Some jurisdictions do not allow the limitation or exclusion of incidental or consequential damages, or limitation on the length of an implied warranty, so the above limitations or exclusions may not apply

to you. This Warranty gives you specific legal rights, and you may also have other rights that vary from one jurisdiction to another.

Products Covered	Length of Coverage
Consumer Products	One (1) year from the date of the products original purchase by the first consumer purchaser of the product.
Consumer Accessories	Ninety (90) days from the date of the accessories original purchase by the first consumer purchaser of the product.
Consumer Products and Accessories that are Repaired or Replaced	The balance of the original warranty or for Ninety (90) days from the date returned to the consumer, whichever is longer.

Exclusions

Normal Wear and Tear. Periodic maintenance, repair and replacement of parts due to normal wear and tear are excluded from coverage.

Batteries. Only batteries whose fully charged capacity falls below 80% of their rated capacity and

batteries that leak are covered by this Warranty.

Abuse & Misuse. Defects or damage that result from: (a) improper operation, storage, misuse or abuse, accident or neglect, such as physical damage (cracks, scratches, etc.) to the surface of the product resulting from misuse; (b) contact with liquid, water, rain, extreme humidity or heavy perspiration, sand, dirt or the like, extreme heat, or food; (c) use of the Products or Accessories for commercial purposes or subjecting the Product or Accessory to abnormal usage or conditions; or (d) other acts which are not the fault of MOTOROLA or BINATONE, are excluded from coverage.

Use of Non-Motorola branded Products and Accessories. Defects or damage that result from the use of Non-Motorola branded or certified Products or Accessories or other peripheral equipment are excluded from coverage.

Unauthorised Service or Modification. Defects or damages resulting from service, testing, adjustment, installation, maintenance, alteration, or modification in any way by someone other than MOTOROLA, BINATONE or its authorised service centres, are excluded from coverage.

Altered Products. Products or Accessories with (a) serial numbers or date tags that have been removed, altered or obliterated; (b) broken seals or that show evidence of tampering; (c) mismatched board serial

numbers; or (d) nonconforming or non-Motorola branded housings, or parts, are excluded from coverage.

Communication Services. Defects, damages, or the failure of Products or Accessories due to any communication service or signal you may subscribe to or use with the Products or Accessories is excluded from coverage.

How to Obtain Warranty Service or Other Information?

To obtain service or information, please call:
+44 (0) 844 557 0890 (UK only)*

*Calls cost 7p per minute plus your telephone company's access charge

Mon - Fri 8:00am to 8:00pm Sat 8:30am to 2:00pm
+44 (0) 8187 62092 (ROI)

Email: support@motorolastore.com

You will receive instructions on how to ship the Products or Accessories at your expense and risk, to a BINATONE Authorised Repair Centre.

To obtain service, you must include: (a) the Product or Accessory; (b) the original proof of purchase (receipt) which includes the date, place and seller of the Product; (c) if a warranty card was included in your box, a completed warranty card showing the serial number of the Product; (d) a written

description of the problem; and, most importantly; (e) your address and telephone number.

These terms and conditions constitute the complete warranty agreement between you and BINATONE regarding the Products or Accessories purchased by you, and supersede any prior agreement or representations, including representations made in any literature publications or promotional materials issued by BINATONE or representations made by any agent, employee or staff of BINATONE, that may have been made in connection with the said purchase.

11. Technical Specifications

LCD screen	2.0-inch
Video resolution	1920*1080P 30fps
Lens	150° wide angle
Video format	MP4
Micro SD card	Up to 32G capacity,Class10
Mic and Speaker	Built-in
GPS	Included
WiFi	Built-in
Power	5V DC
Battery	Li-polymer battery
Device dimensions	122x54.7x57.5mm
Device Weight	100.6g
Mount dimensions	78x55x59mm
Supported operating system for file viewing	Windows XP and later, MAC OS

BINATONETELECOMPLC
1 Apsley Way London NW2 7HF, United Kingdom.
Tel:+44(0)2089552700Fax:+44(0)2083448877
E-mail: binatoneuk@binatone telecom.co.uk

Binatone

ENGLISH

EC Declaration of Conformity

We the manufacturer/Importer: Binatone Telecom Plc
1ApsleyWayLondonNW27HF,
United Kingdom.

Declare under our sole responsibility that the following product

<u>Type of equipment:</u>	<u>Dash Camera</u>
<u>Model Name:</u>	<u>MDC500GW series</u>
<u>Country of Origin:</u>	<u>China</u>
<u>Brand:</u>	<u>Motorola</u>

Complies with the essential protection requirements of the RED 2014/53/EU:

Radio	EN 300328 V2.1.1(2016-11)
Article 3.2	EN 303413 V1.1.1(2017-06)
EMC	EN 301489-1 V2.2.0(2017-03)
Article 3.1(b)	EN301489-17 V3.2.0 (2017-03) EN 301489-19 V2.1.0(2017-03)
Safety	EN60950-1:2006+A11:2009+A1:2010+A12:2011+A2:2013
Health	EN 62479:2010
Article 3.1(a)	

This product also complies with the essential protection requirements of New EMC Directive 2014/30/EU and the following standards:

EMC:	EN55032:2015
	EN55035: 2017

The product is labelled with the European Approval Marking CE as show. Any Unauthorized modification of the product voids this Declaration.



Manufacturer/Importer
(signature of authorized person)



Stephen Chan, Product Manager



London,

Signature:

Place & Date: 29June,2018



Manufactured, distributed or sold by Binatone Electronics International LTD., official licensee for this product.

MOTOROLA and the Stylised M Logo, are trademarks or registered trademarks of Motorola Trademark Holdings, LLC. and are used under license. All other trademarks are the property of their respective owners. © 2018 Motorola Mobility LLC. All rights reserved.



UK_EN Version 3.0
Printed in China

FCC Caution:

Any Changes or modifications not expressly approved by the party responsible for compliance could void the user's authority to operate the equipment.

This device complies with part 15 of the FCC Rules. Operation is subject to the following two conditions: (1) This device may not cause harmful interference, and (2) this device must accept any interference received, including interference that may cause undesired operation.

IMPORTANT NOTE:

Note: This equipment has been tested and found to comply with the limits for a Class B digital device, pursuant to part 15 of the FCC Rules. These limits are designed to provide reasonable protection against harmful interference in a residential installation. This equipment generates, uses and can radiate radio frequency energy and, if not installed and used in accordance with the instructions, may cause harmful interference to radio communications. However, there is no guarantee that interference will not occur in a particular installation. If this equipment does cause harmful interference to radio or television reception, which can be determined by turning the equipment off and on, the user is encouraged to try to correct the interference by one or more of the following measures:

—Reorient or relocate the receiving antenna.

—Increase the separation between the equipment and receiver.

—Connect the equipment into an outlet on a circuit different from that to which the receiver is connected.

—Consult the dealer or an experienced radio/TV technician for help.

FCC Radiation Exposure Statement:

This equipment complies with FCC radiation exposure limits set forth for an uncontrolled environment. This equipment should be installed and operated with minimum distance 20cm between the radiator& your body.

This transmitter must not be co-located or operating in conjunction with any other antenna or transmitter.