

1:Label on production



Transparent protective label for Lcd

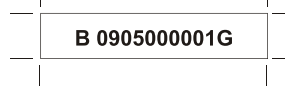
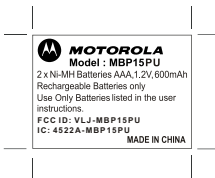


Transparent protective label



Handset batteries label

Handset batteries s/n label



- Details: handset batteries label for battery compartment
- 1) white background black letters
 - 2) material: adhesive label with plastic lamination on top
 - 3) scale: 1:1 fit on battery compartment
 - 3) Size: 21x15mm

Date code and serial no. label for cordless handset-battery compartment
30 x 6mm

Date code and service no. label on base unit back and handset -battery compartment
Your factory code is 'B'
09 = Year (2009) _____ Produce date "G" for RoHS
05 = Month (May)
Serial no. start from '000001' (6 digits)

To "999999" running and never reset
white background black letters