



QUICK START GUIDE

Model: MIMO PHONE

The features described in this user's guide are subject to modifications without prior notice.

Table of contents

1. Product Introduction.....	3
1.1 Package contents.....	3
1.2 Product description.....	3
1.3 Product details.....	3
2. App Installation.....	4
2.1 Download HubbleClub by Hubble Connected App.....	4
2.2 Sign up with Hubble on your smart device.....	5
3. Connecting to the Smartphone.....	6
4. App Description.....	8
4.1 Home page.....	8
4.2 Voicechat.....	9
4.3 Settings.....	10
5. Warnings.....	11
6. Operation Guide.....	12
7. FAQ.....	15
8. General Information.....	17
9. Technical Specifications.....	25

Caution:

- Risk of explosion if the battery is replaced by an incorrect type.
- Disposal of a battery into fire or a hot oven, that can result in an explosion.
- A battery subjected to extremely low air pressure that may result in an explosion or the leakage of flammable liquid or gas.

Important Safety Instructions

High sound pressure with hearing damage risk. Do not listen at high volume levels for long periods.

1. Product Introduction

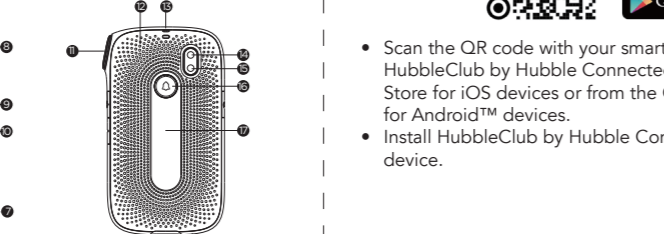
1.1 Package contents



1.2 Product description

MIMO PHONE – Kid's 4G phone with Wi-Fi / GPS / LBS tracking, video chat and SOS button.

1.3 Product details



- 1 Light Sensor
- 2 Earpiece
- 3 Front Camera
- 4 On / Off button
- 5 Display Screen & Touch Panel
- 6 Microphone
- 7 Charging Socket
- 8 Distance Sensor

- 9 Volume +
- 10 Volume -
- 11 Back / PTT button
- 12 Speaker
- 13 Lanyard Hole
- 14 Rear Camera
- 15 Flashlight
- 16 SOS button
- 17 Wireless Charging Space

2. App Installation

2.1 Download HubbleClub by Hubble Connected App



- Scan the QR code with your smart device and download HubbleClub by Hubble Connected App from the App Store for iOS devices or from the Google Play™ Store for Android™ devices.
- Install HubbleClub by Hubble Connected App on your device.

2.2 Sign up with Hubble on your smart device

- Ensure that your smart device is connected to your Wi-Fi® router.
- Run HubbleClub by Hubble Connected App, tap Sign Up with Hubble (Fig.1), read through the Privacy Policy, Terms and Conditions, by signing up you agree to our terms of service before tap Done (Fig.2), enter your account information to sign up with Hubble.

Note:

If you already have a Hubble App account, please tap Log in with Hubble to go to the next steps.

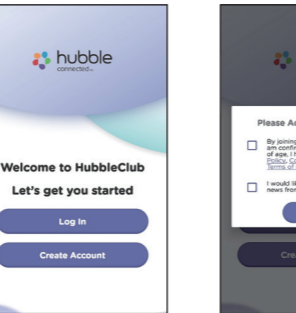


Fig.1

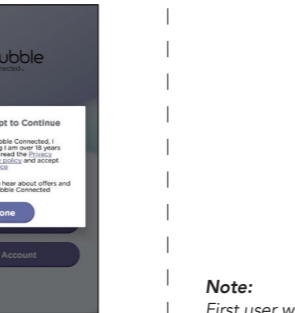


Fig.2

3. Connecting to the Smartphone

1. Register app (see more section 2).
2. Bind your MIMO PHONE to Admin-trator's account.
- Turn the phone ON. You should see the phone's QR code on the screen. If not please check FAQ.
- Start binding in the HubbleClub by Hubble Connected App.
- Scan QR code from the phone's screen using app.



Fig.3

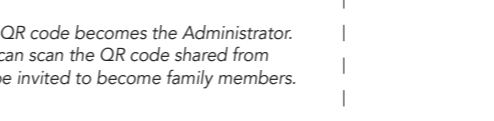


Fig.5

4. App Description

4.1 Home page

1. Photos shared from phone.
2. Calling button: click to make a voice call to the phone.
3. Step counter: select to check pedometer information from the phone.
4. Videochat: click to start videochat with the phone.
5. The phone's battery level.
6. Map: click on the map to see location on a full screen map, change map layer, update location and route to the phone.
7. Manual positioning: click to request current location of the phone.
8. Switch between phones if use more than one.



Fig.4

4.2 Voicechat

1. Voicechat button: hold the button to record, release to send the recording, 60 sec limit for one recorded message.
2. Emoji: select the button and choose emoji or stickers to send it to the phone.
3. Voice message: short click to listen the message, long press on avatar to delete message.

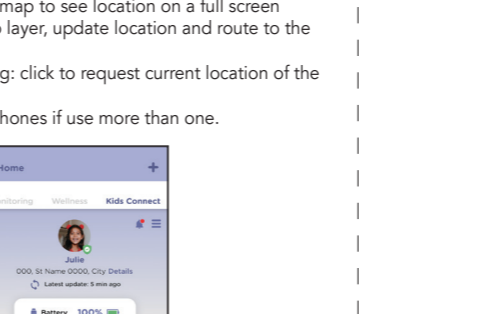


Fig.6



Fig.7

4.3 Settings

System and account settings

- Set device information.
- Set safe zones, manage the contact list and family members, see location history, set alarms, manage friends, set class mode, set care time, set Wi-Fi password, set white list option, allow videochat from the phone, forbid turning off device.
- About device: you can check the device's IMEI and QR code, and unbind the phone.
- Add another phone to the app.
- My information: manage your account.

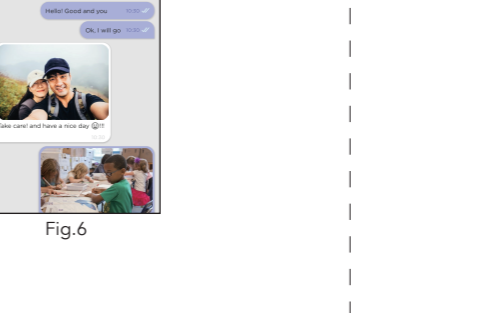


Fig.7

5. Warnings

1. This product is not a toy. Do not allow children or pets to play with your MIMO PHONE. The product contains small components that can be a choking hazard.
2. MIMO PHONE is splash-resistant. It can withstand raindrops and sweat, however, it should be removed before swimming or showering.
3. Certain atmosphere factors and other error sources can affect the accuracy of GPS.
4. Do not store the device under extreme temperatures.
5. Do not use or store device in dusty and dirty areas.
6. Do not drop, knock, or shake device. Rough handling can disrupt internal circuit board and mechanical parts.
7. Charger output must be: 5V, 1A (standard USB charger).
8. By default, data roaming function on the phone is turned on. Please don't forget to turn it off if you don't need this function.
9. Please make sure you have correctly entered phone numbers using country code: <+> <country code> <phone number>. For example +1234567890. Don't use symbols like '(', ')', ',', '.', '<'>.
10. To prevent overheating, the videochat function is limited to 3 minutes duration. Timeout between videochats should be not less than 5 minutes. In case of emergency, videochat can be initiated from the app by entering a confirmation code.
11. MIMO PHONE works in 2G / 3G / 4G network. Photo sharing, videochat function and automatic firmware updates can use significant mobile internet traffic. Choose operator's tariff accordingly and set Wi-Fi passwords for frequently visited places to lower the amount of mobile traffic.
12. Regularly check for available updates in phone settings.

6. Operation Guide

Two-way communication

1. Call or videochat from Mimo to smartphone or another phone: slide the screen to enter "Phonebook", select a contact to make phone call or videochat. Press power button to end phone call.
2. Call or videochat from app to phone: select call or videochat icon on the Home page.

Note:

The phone supports one-to-one voice chatting (15 seconds per voice message).

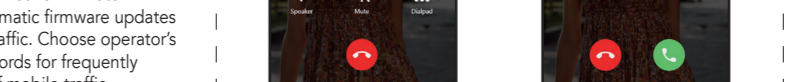
Pedometer
Slide the screen to enter "Pedometer". All-day activity monitoring counts your kid's steps: scroll left to enter "Pedometer". Note: please enter correct weight, height and birthday for correct "burned calories" calculation.

SOS

Hold the SOS button for 3 seconds to start the SOS. All users in the app will receive an alarm with phone's GPS location as well as a 30-second audio recording.

Taking photos and managing the album

Slide the screen to enter "Camera". Using frontal camera, KidPhone 4GR allows to take great photos. User can store photos in the album, browse, share with family or delete.



Voicechat

1. Slide the screen to enter "Friends", select a contact.
2. Hold mic to record voice message and release to send out. The phone can receive voice and text messages, emoji and stickers. phone can send voice messages, photos, emoji and stickers to the app.
3. Voicechat via the app: select "Voicechat" and start chatting and sending emoji and stickers to the phone.

Note:

The phone supports one-to-one voice chatting (15 seconds per voice message).

Pedometer

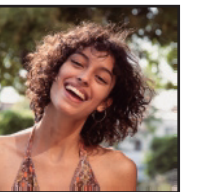
Slide the screen to enter "Pedometer". All-day activity monitoring counts your kid's steps: scroll left to enter "Pedometer". Note: please enter correct weight, height and birthday for correct "burned calories" calculation.

SOS

Hold the SOS button for 3 seconds to start the SOS. All users in the app will receive an alarm with phone's GPS location as well as a 30-second audio recording.

Taking photos and managing the album

Slide the screen to enter "Camera". Using frontal camera, KidPhone 4GR allows to take great photos. User can store photos in the album, browse, share with family or delete.



Making friends

Slide the screen to enter "Friends". Click on the "Add friend" icon and then "Start".

Shake the device to make friends with people who wear the same device by Hubble are within 2 m and who have their device in the "Making friends" mode.

Change the theme

Slide the menu to enter "Themes". Scroll left and right to select wallpapers. Click on the screen to confirm the theme which you prefer.

Alarm

Slide the screen to select "Alarm". You can add Alarm and configure repeat setting. To delete existing alarm slide left and tap delete.

Phone settings

Slide the screen to enter "Settings". You can check firmware version and available updates, IMEI number, and time zone, theme, system language, turn On / Off data roaming and manage Wi-Fi networks.

7. FAQ

Q: Does MIMO PHONE need to insert any SIM ?

A: MIMO PHONE supports 2G: 900/1800, 3G: 2100/900 WCDMA, LTE (B1/B3/B7/B8/B20) with Build in eSIM.

There is no need to insert any SIM, the device will activate server depends on your region right away.

Q: What is the standby time for MIMO PHONE ?

A: MIMO PHONE battery capacity is 2500 mAh. The standby time depends on tracking mode and position frequency. Average standby time is up to 72 hours.

Q: What is the age range for MIMO PHONE ?

A: Target users are children from 3 to 12 years old.

Q: Are the materials of MIMO PHONE safe and secure?

A: MIMO PHONE only uses the materials that conform to the EU children's toys material safety standards.

Q: How can I clean this phone?

A: Please wipe it with a clean damp cloth; add a little bit of alcohol if dirt doesn't remove easily.

Q: Does MIMO PHONE radiation affect kid's health?

A: MIMO PHONE radiation rate is much lower than maximums allowed by the EU standard.

Q: Is MIMO PHONE waterproof?

A: MIMO PHONE is splash-resistant. It can withstand raindrops and a sweat, however, briefly immersed in water, it should be removed before swimming or showering.

Q: Is it normal for the phone to get warm while charging?

A: It is normal for the phone to get warm.

Q: What can I do if QR code won't scan?

A: Try again with more light or adjust the distance between camera lens and QR code. Binding code can also be entered manually.

Q: Does the phone need network support when using the geopositioning function?

A: MIMO PHONE needs network support because it uses SIM card data service, which upload location data to the server. MIMO PHONE build in eSIM and if activated at your region, it automatically connect to network.

Q: Can the battery of the phone explode when affected by high temperatures or while charging?

A: MIMO PHONE uses a battery that's durable and has a higher safety performance compared to the traditional lithium-ion battery. The gel polymer lithium-ion battery uses a special colloidal electrolyte which will prevent it from exploding as the battery does not produce air or gas even if the liquid boils. This type of battery showed perfect performance in dozens of reliability tests such as crash, puncture, crushing and heating. However, you should not conduct any tests by yourself.

Q: How accurate is the location positioning?

A: MIMO PHONE gets position from 3 sources: GPS, Wi-Fi, LBS. GPS-mode is very accurate (5-10 meters). In tall buildings and other urban obstructions there is a small chance of larger deviation. MIMO PHONE will try to get its position via Wi-Fi if GPS signal is not available. Wi-Fi location accuracy is about 50-100 meters. If both Wi-Fi and GPS signals are not available, MIMO PHONE will use LBS to get location. LBS accuracy is about 500-5000 meters.

Q: What can I do if QR code won't scan?

A: It is normal for the phone to get warm.

Q: What can I do if QR code won't scan?

A: It is normal for the phone to get warm.

Q: What can I do if QR code won't scan?

A: It is normal for the phone to get warm.

Q: What can I do if QR code won't scan?

A: It is normal for the phone to get warm.

8. General Information

If your product is not working properly, read this Quick Start Guide or the online User's Guide of one of the models listed on page 1.

For questions, warranty, support or service related the product, please contact us by

Live Chat: hubbleconnected.com

Email: support@hubbleconnected.com

Online warranty registration: <https://hubbleconnected.com/warranty>

Online Product Registration: <https://hubbleconnected.com/apps/product-registration>

Consumer Products and Accessories Limited Warranty ("Warranty")

Thank you for purchasing this Hubble Smart Nursery branded product manufactured under license by Hubble Baby (HK) Limited ("HUBBLE").

What Does this Limited Warranty Cover?

Subject to the items listed below in the section "What is not Covered" HUBBLE warrants that this Hubble connected branded product ("Product") will be free from defects in material and workmanship under normal use for a period of 2 years from the date of purchase and that any certified accessory ("Accessory") sold for use with this product will be free from defects in materials and workmanship under normal use for a period of 90-days from the date of purchase. This Limited Warranty is your exclusive warranty and is not transferable.

What Other Limitations Are There?

THIS LIMITED WARRANTY SETS FORTH THE ENTIRE LIABILITY OF HUBBLE AND CONTAINS YOUR SOLE AND EXCLUSIVE REMEDY. OTHER THAN THIS LIMITED WARRANTY, HUBBLE MAKES NO ADDITIONAL REPRESENTATIONS OR WARRANTIES, EXPRESS OR IMPLIED, INCLUDING WARRANTIES OF MERCHANTABILITY OR FITNESS FOR A PARTICULAR PURPOSE. IF YOUR STATE DOES NOT PERMIT THE DISCLAIMER OF WARRANTIES,

What is not covered?

This Limited Warranty excludes and does not cover:

- Normal deterioration or wear resulting from use;
- Damage caused by or resulting from misuse, abuse, or accident;
- Damage caused by or resulting from improper operation or storage;
- Damage caused by or resulting from contact with foreign substances, including, but not limited to, liquid, water, rain, humidity, perspiration, sand, dirt, and/or food;
- Damage caused by or resulting from the use of Non-Hubble Smart Nursery branded or certified Products or Accessories or other peripheral equipment;
- Damage caused by or resulting from modifications, alterations, tampering, improper installation, or repairs by someone other than Hubble connected, HUBBLE or their authorized representatives;
- Defects, damages, or the failure of Products or Accessories due to any communication service or signal you may subscribe to or use with the Products or Accessories; and,
- Periodic maintenance, repair and replacement of parts due to normal wear and tear.

What is not covered?

This Limited Warranty excludes and does not cover:

THEN THE IMPLIED WARRANTY OF MERCHANTABILITY AND FITNESS FOR A PARTICULAR PURPOSE IS LIMITED TO THE DURATION OF THIS LIMITED WARRANTY. REPAIR OR REPLACEMENT IS YOUR SOLE AND EXCLUSIVE REMEDY AGAINST HUBBLE AND Hubble Smart Nursery. IN NO EVENT SHALL HUBBLE OR Hubble Smart Nursery'S LIABILITY TO REPAIR OR REPLACE YOUR PRODUCT OR ACCESSORY EXCEED THE ORIGINAL PURCHASE PRICE OF THE PRODUCT AND ACCESSORY AND HUBBLE AND Hubble Smart Nursery'S TOTAL LIABILITY FOR DAMAGES ARISING FROM THIS LIMITED WARRANTY SHALL NOT EXCEED THE PRICE YOU PAID FOR THE PRODUCT AND ACCESSORY REGARDLESS OF WHETHER SUCH CLAIM ARISES UNDER CONTRACT, STATUTE, TORT OR OTHERWISE. IN NO EVENT AND UNDER NO CIRCUMSTANCES WILL HUBBLE OR Hubble Smart Nursery BE LIABLE FOR DIRECT, INDIRECT, INCIDENTAL, SPECIAL OR CONSEQUENTIAL DAMAGES OF ANY KIND, OR LOSS OF REVENUE OR PROFITS, LOSS OF BUSINESS, LOSS OF INFORMATION OR OTHER FINANCIAL LOSS ARISING OUT OF OR IN CONNECTION WITH THE ABILITY OR INABILITY TO USE THE PRODUCTS OR ACCESSORIES. ALL DISCLAIMERS, LIMITATIONS OF LIABILITY AND MODIFICATIONS OF WARRANTIES STILL APPLY EVEN IF THE LIMITED REMEDY OF REPAIR AND REPLACEMENT FAILS OF ITS ESSENTIAL PURPOSE. Some jurisdictions do not allow the limitation or exclusion of incidental or consequential damages, so the above limitations or exclusions may not apply to you. This Limited Warranty gives you specific legal rights, and you may have other rights that vary from one jurisdiction to another.

Who is covered?

This Warranty extends only to the first consumer purchaser and is not transferable.

What will HUBBLE do?

HUBBLE or its authorized distributor at its sole discretion will, at no charge, repair or replace any Products or Accessories that do conform to this Warranty. In the event that replacement is necessary to remedy a defect in material or workmanship, HUBBLE may use new or remanufactured products, accessories or parts of equal quality to the original Product or Accessory.

How to Obtain Warranty Service or Other Information?

For questions, warranty, support or service related the product, please contact us by

Live Chat: hubbleconnected.com

Email: support@hubbleconnected.com

Online warranty registration: <https://hubbleconnected.com/warranty>

Online Product Registration: <https://hubbleconnected.com/apps/product-registration>

You will receive instructions on how to ship the Products or Accessories at your expense and risk, to a HUBBLE Authorized Repair Center.

You must include: (a) the Product or Accessory; (b) the original proof of purchase (receipt) which includes the date, place and seller of the Product; (c) if a warranty card was included in your box, a completed warranty card showing the serial number of the Product; (d) a written description of the problem; and, (e) your name, address, email address and telephone number. These terms and conditions constitute the complete warranty

agreement between you and HUBBLE regarding the Products or Accessories purchased by you, and supersede any prior agreement or representations, including representations made in any literature publications or promotional materials issued by HUBBLE or representations made by any agent, employee or staff of HUBBLE, that may have been made in connection with your purchase of any Product and/or Accessory.

FCC and IC regulations (FCC Part 15)

NOTE: This equipment has been tested and found to comply with the limits for a Class B digital device, pursuant to Part 15 of the Federal Communications Commission (FCC) rules. This device complies with Part 15 of the FCC Rules. Operation is subject to the following two conditions: (1) this device may not cause harmful interference, and (2) this device must accept any interference received, including interference that may cause undesired operation.

ISED compliance statement

This equipment complies with IC RSS-102 radiation exposure limits set forth for an uncontrolled environment. This equipment should be installed and operated with minimum distance 15cm between the radiator and your body. This transmitter must not be co-located or operating in conjunction with any other antenna or transmitter.

IC SAR statement

This equipment complies with IC SAR-102 radiation exposure limits set forth for an uncontrolled environment. This equipment should be installed and operated with minimum distance 10cm between the radiator and your body. Cet équipement est conforme aux limites d'exposition aux rayonnements ISED établies pour un environnement non contrôlé. L'utilisateur final doit suivre les instructions spécifiques pour satisfaire les normes. Cet émetteur ne doit pas être co implanté ou fonctionner en conjonction avec toute autre antenne ou transmetteur. Le dispositif portable est conçu pour répondre aux exigences d'exposition aux ondes radio établie par le développement énergétique DURABLE. Ces exigences un SAR limite de 1,6 W/kg en moyenne pour un gramme de tissu. La valeur SAR la plus élevée signalée en vertu de cette norme lors de la certification de produit à utiliser lorsqu'il est correctement porté sur le corps à une distance minimale de 10 mm. .

FCC Radiation Exposure statement

This equipment complies with FCC radiation exposure limits set forth for an uncontrolled environment. End user must follow the specific operating instructions for satisfying RF exposure compliance. This transmitter must not be co located or operating in conjunction with any other antenna or transmitter. The portable device is designed to meet the requirements for exposure to radio waves established by the ISED. These requirements set a SAR limit of 1.6 W/kg averaged over one gram of tissue. The highest SAR value reported under this standard during product certification for use when properly worn on the head & body with minimum distance 10mm.

ISED Radiation Exposure statement

This equipment complies with IC SAR-102 radiation exposure limits set forth for an uncontrolled environment. This equipment should be installed and operated with minimum distance 10 cm between the radiator and your body. Cet équipement est conforme aux limites d'exposition aux radiations IC CNR-102 établies pour un environnement non contrôlé. Cet équipement doit être installé et utilisé avec une distance minimale de 10 cm entre le radiateur et votre corps.

Download User Guide from website: support.hubbleconnected.com

FCC SAR statement

This equipment complies with FCC radiation exposure limits set forth for an uncontrolled environment. End user must follow the specific operating instructions for satisfying RF exposure compliance. This transmitter must not be co located or operating in conjunction with any other antenna or transmitter. The portable device is designed to meet the requirements for exposure to radio waves established by the Federal Communications Commission (USA). These requirements set a SAR limit of 1.6 W/kg averaged over one gram of tissue. The highest SAR value reported under this standard during product certification for use when properly worn on the head & body with minimum distance 10mm.

IC SAR statement

This equipment complies with IC SAR-102 radiation exposure limits set forth for an uncontrolled environment. This equipment should be installed and operated with minimum distance 15cm between the radiator and your body. This transmitter must not be co-located or operating in conjunction with any other antenna or transmitter.

ISED Radiation Exposure statement

This equipment complies with IC SAR-102 radiation exposure limits set forth for an uncontrolled environment. This equipment should be installed and operated with minimum distance 10 cm between the radiator and your body. Cet équipement est conforme aux limites d'exposition aux radiations IC CNR-102 établies pour un environnement non contrôlé. Cet équipement doit être installé et utilisé avec une distance minimale de 10 cm entre le radiateur et votre corps.

Download User Guide from website: support.hubbleconnected.com

9. Technical Specifications

MIMO PHONE

Standard	LTE mobile phone
Frequency band	BT: 2402-2480MHz 2.4G WIFI: 2412-2472MHz GPS:1559-1610MHz WPC 109.2-140.6KHz 4G Bands 2/4/7/12/13/17/26/41/66 3G Bands 2/4/5
Operating Time (with fully charged battery)	Standby: Up to 72 hours Talking: Up to 3 hours
Charging time	< 4 hours
Temperature range	Operating: 0°C to 45°C Storage: -20°C to 60°C
Waterproof	IPX67
Battery	Battery type: Li-ion Polymer Battery Pack: 3.8V DC, 2500 mAh Build in
Wireless charger	Input 5.0V 1A Output Max. 5W

Download User Guide from website: support.hubbleconnected.com



Manufactured, distributed and sold by Hubble Baby (HK) Limited. Apple logo is trademark of Apple Inc., registered in the U.S. and other countries. App Store is a service mark of Apple Inc. Google Play and Android are trademarks of Google Inc. Wi-Fi is a trademark of the Wi-Fi Alliance. All rights reserved.

US_EN Version 4.0
Printed in China

