



QUICK START GUIDE

Model: MIMO WATCH

The features described in this user's guide are subject to modifications without prior notice.

Table of contents

1. Product Introduction.....	3
1.1 Package contents.....	3
1.2 Product description.....	3
1.3 Product details.....	3
2. App Installation.....	4
2.1 Download HubbleClub by Hubble Connected App.....	4
2.2 Sign up with Hubble on your smart device.....	5
3. Connecting to the Smartphone.....	6
4. App Description.....	7
4.1 Home page.....	8
4.2 Voicechat.....	8
4.3 Settings.....	9
5. Warnings.....	10
6. Operation Guide.....	12
7. FAQ.....	15
8. General Information.....	17
9. Technical Specifications.....	25

Caution:

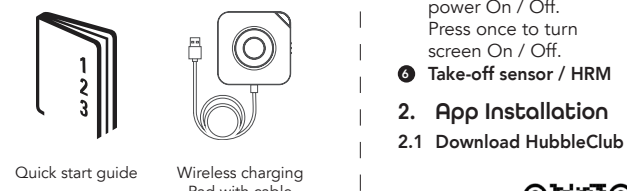
- Risk of explosion if the battery is replaced by an incorrect type.
- Disposal of a battery into fire or a hot oven, that can result in an explosion.
- A battery subjected to extremely low air pressure that may result in an explosion or the leakage of flammable liquid or gas.

Important Safety Instructions

High sound pressure with hearing damage risk. Do not listen at high volume levels for long periods.

1. Product Introduction

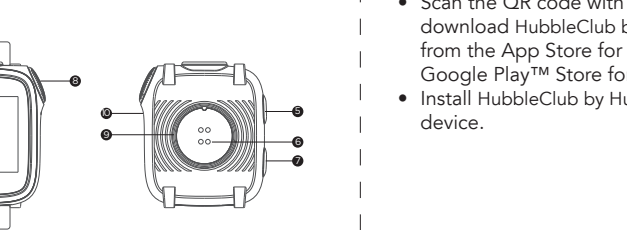
1.1 Package contents



1.2 Product description

MIMO WATCH – Kid's 4G watch-phone with Wi-Fi / GPS / LBS tracking, video chat and SOS button.

1.3 Product details



1. Rear Camera

2. Front Camera

3. Display screen & touch panel

4. Speaker

5. On / Off button

6. PTT button

7. Wireless charging space

8. Microphone

9. Take-off sensor / HRM

10. Microphone

11. Microphone

12. Microphone

13. Microphone

14. Microphone

15. Microphone

16. Microphone

17. Microphone

18. Microphone

19. Microphone

20. Microphone

21. Microphone

22. Microphone

23. Microphone

24. Microphone

25. Microphone

26. Microphone

27. Microphone

28. Microphone

29. Microphone

30. Microphone

31. Microphone

32. Microphone

33. Microphone

34. Microphone

35. Microphone

36. Microphone

37. Microphone

38. Microphone

39. Microphone

40. Microphone

41. Microphone

42. Microphone

43. Microphone

44. Microphone

45. Microphone

46. Microphone

47. Microphone

48. Microphone

49. Microphone

50. Microphone

51. Microphone

52. Microphone

53. Microphone

54. Microphone

55. Microphone

56. Microphone

57. Microphone

58. Microphone

59. Microphone

60. Microphone

61. Microphone

62. Microphone

63. Microphone

64. Microphone

65. Microphone

66. Microphone

67. Microphone

68. Microphone

69. Microphone

70. Microphone

71. Microphone

72. Microphone

73. Microphone

74. Microphone

75. Microphone

76. Microphone

77. Microphone

78. Microphone

79. Microphone

80. Microphone

81. Microphone

82. Microphone

83. Microphone

84. Microphone

85. Microphone

86. Microphone

87. Microphone

88. Microphone

89. Microphone

90. Microphone

91. Microphone

92. Microphone

93. Microphone

94. Microphone

95. Microphone

96. Microphone

97. Microphone

98. Microphone

99. Microphone

100. Microphone

101. Microphone

102. Microphone

103. Microphone

104. Microphone

105. Microphone

106. Microphone

107. Microphone

108. Microphone

109. Microphone

110. Microphone

111. Microphone

112. Microphone

113. Microphone

114. Microphone

115. Microphone

116. Microphone

117. Microphone

118. Microphone

119. Microphone

120. Microphone

121. Microphone

122. Microphone

123. Microphone

124. Microphone

125. Microphone

126. Microphone

127. Microphone

128. Microphone

129. Microphone

130. Microphone

131. Microphone

132. Microphone

133. Microphone

134. Microphone

135. Microphone

136. Microphone

137. Microphone

138. Microphone

139. Microphone

140. Microphone

141. Microphone

142. Microphone

143. Microphone

144. Microphone

145. Microphone

146. Microphone

147. Microphone

148. Microphone

149. Microphone

150. Microphone

151. Microphone

152. Microphone

153. Microphone

154. Microphone

155. Microphone

156. Microphone

157. Microphone

158. Microphone

159. Microphone

160. Microphone

161. Microphone

162. Microphone

163. Microphone

164. Microphone

165. Microphone

166. Microphone

167. Microphone

168. Microphone

169. Microphone

170. Microphone

171. Microphone

172. Microphone

173. Microphone

174. Microphone

175. Microphone

176. Microphone

177. Microphone

178. Microphone

179. Microphone

180. Microphone

181. Microphone

182. Microphone

183. Microphone

184. Microphone

185. Microphone

186. Microphone

187. Microphone

188. Microphone

189. Microphone

190. Microphone

191. Microphone

192. Microphone

193. Microphone

194. Microphone

195. Microphone

196. Microphone

197. Microphone

198. Microphone

199. Microphone

200. Microphone

201. Microphone

202. Microphone

203. Microphone

204. Microphone

205. Microphone

206. Microphone

207. Microphone

208. Microphone

209. Microphone

210. Microphone

211. Microphone

212. Microphone

213. Microphone

214. Microphone

215. Microphone

216. Microphone

217. Microphone

218. Microphone

219. Microphone

220. Microphone

221. Microphone

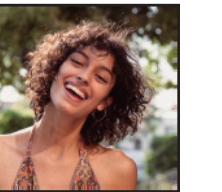
222. Microphone

223. Microphone

224. Microphone

225. Microphone

226. Microphone



Making friends

Slide the screen to enter "Friends". Click on the "Add friend" icon and then "Start".

Shake the device to make friends with people who wear the same device by Hubble are within 2 m and who have their device in the "Making friends" mode.

Change the theme

Slide the menu to enter "Themes". Scroll left and right to select wallpapers. Click on the screen to confirm the theme which you prefer.

Alarm

Slide the screen to select "Alarm". You can add Alarm and configure repeat setting. To delete existing alarm slide left and tap delete.

Watch settings

Slide the screen to enter "Settings". You can check firmware version and available updates, IMEI number, and time zone, theme, system language, turn On / Off data roaming and manage Wi-Fi networks.

7. FAQ

Q: Does MIMO WATCH need to insert any SIM ?

A: MIMO WATCH supports 2G: 900/1800, 3G: 2100/900 WCDMA, LTE (B1/B3/B7/B8/B20) with Build in eSIM.

There is no need to insert any SIM, the device will activate server depends on your region right away.

Q: What is the standby time for MIMO WATCH ?

A: MIMO WATCH battery capacity is 620 mAh. The standby time depends on tracking mode and position frequency. Average standby time is up to 72 hours.

Q: What is the age range for MIMO WATCH ?

A: Target users are children from 3 to 12 years old.

Q: Are the materials of MIMO WATCH safe and secure?

A: MIMO WATCH only uses the materials that conform to the EU children's toys material safety standards.

Q: How can I clean this watch?

A: Please wipe it with a clean damp cloth; add a little bit of alcohol if dirt doesn't remove easily.

Q: Does MIMO WATCH radiation affect kid's health?

A: MIMO WATCH radiation rate is much lower than maximums allowed by the EU standard.

Q: Is MIMO WATCH waterproof?

A: MIMO WATCH is splash-resistant. It can withstand raindrops and a sweat, however, briefly immersed in water, it should be removed before swimming or showering.

Q: Is it normal for the watch to get warm while charging?

A: It is normal for the watch to get warm.

8. General Information

Q: What can I do if QR code won't scan?
A: Try again with more light or adjust the distance between camera lens and QR code. Binding code can also be entered manually.

Q: Does the watch need network support when using the geopositioning function?
A: MIMO WATCH needs network support because it uses SIM card data service, which upload location data to the server. MIMO WATCH build in eSIM and if activated at your region, it automatically connect to network.

Q: Can the battery of the watch explode when affected by high temperatures or while charging?
A: MIMO WATCH uses a battery that's durable and has a higher safety performance compared to the traditional lithium-ion battery. The gel polymer lithium-ion battery uses a special colloidal electrolyte which will prevent it from exploding as the battery does not produce air or gas even if the liquid boils. This type of battery showed perfect performance in dozens of reliability tests such as crash, puncture, crushing and heating. However, you should not conduct any tests by yourself.

Q: How accurate is the location positioning?
A: MIMO WATCH gets position from 3 sources: GPS, Wi-Fi, LBS. GPS-mode is very accurate (5-10 meters). In tall buildings and other urban obstructions there is a small chance of larger deviation. MIMO WATCH will try to get its position via Wi-Fi if GPS signal is not available. Wi-Fi location accuracy is about 50-100 meters. If both Wi-Fi and GPS signals are not available, MIMO WATCH will use LBS to get location. LBS accuracy is about 500-5000 meters.

9. Technical Specifications

MIMO WATCH

Standard	LTE mobile watch
Frequency band	BT: 2402-2480MHz 2.4G WIFI: 2412-2472MHz GPS:1559-1610MHz WPC 119.6-148.6KHz 4G Bands 2/4/7/12/13/17/26/41/66 3G Bands 2/4/5
Operating Time (with fully charged battery)	Standby: Up to 72 hours Talking: Up to 3 hours
Charging time	< 3 hours
Temperature range	Operating: 0°C to 45°C Storage: -20°C to 60°C
Waterproof	IPX67
Battery	Battery type: Li-ion Polymer Battery Pack: 3.8V DC, 620 mAh Build in
Wireless charger	Input 5.0V 1A Output Max. 5W

9. Technical Specifications

MIMO WATCH

Standard	LTE mobile watch
Frequency band	BT: 2402-2480MHz 2.4G WIFI: 2412-2472MHz GPS:1559-1610MHz WPC 119.6-148.6KHz 4G Bands 2/4/7/12/13/17/26/41/66 3G Bands 2/4/5
Operating Time (with fully charged battery)	Standby: Up to 72 hours Talking: Up to 3 hours
Charging time	< 3 hours
Temperature range	Operating: 0°C to 45°C Storage: -20°C to 60°C
Waterproof	IPX67
Battery	Battery type: Li-ion Polymer Battery Pack: 3.8V DC, 620 mAh Build in
Wireless charger	Input 5.0V 1A Output Max. 5W

9. Technical Specifications

MIMO WATCH

Standard	LTE mobile watch
Frequency band	BT: 2402-2480MHz 2.4G WIFI: 2412-2472MHz GPS:1559-1610MHz WPC 119.6-148.6KHz 4G Bands 2/4/7/12/13/17/26/41/66 3G Bands 2/4/5
Operating Time (with fully charged battery)	Standby: Up to 72 hours Talking: Up to 3 hours
Charging time	< 3 hours
Temperature range	Operating: 0°C to 45°C Storage: -20°C to 60°C
Waterproof	IPX67
Battery	Battery type: Li-ion Polymer Battery Pack: 3.8V DC, 620 mAh Build in
Wireless charger	Input 5.0V 1A Output Max. 5W

9. Technical Specifications

MIMO WATCH

Standard	LTE mobile watch
Frequency band	BT: 2402-2480MHz 2.4G WIFI: 2412-2472MHz GPS:1559-1610MHz WPC 119.6-148.6KHz 4G Bands 2/4/7/12/13/17/26/41/66 3G Bands 2/4/5
Operating Time (with fully charged battery)	Standby: Up to 72 hours Talking: Up to 3 hours
Charging time	< 3 hours
Temperature range	Operating: 0°C to 45°C Storage: -20°C to 60°C
Waterproof	IPX67
Battery	Battery type: Li-ion Polymer Battery Pack: 3.8V DC, 620 mAh Build in
Wireless charger	Input 5.0V 1A Output Max. 5W

9. Technical Specifications

MIMO WATCH

Standard	LTE mobile watch
Frequency band	BT: 2402-2480MHz 2.4G WIFI: 2412-2472MHz GPS:1559-1610MHz WPC 119.6-148.6KHz 4G Bands 2/4/7/12/13/17/26/41/66 3G Bands 2/4/5
Operating Time (with fully charged battery)	Standby: Up to 72 hours Talking: Up to 3 hours
Charging time	< 3 hours
Temperature range	Operating: 0°C to 45°C Storage: -20°C to 60°C
Waterproof	IPX67
Battery	Battery type: Li-ion Polymer Battery Pack: 3.8V DC, 620 mAh Build in
Wireless charger	Input 5.0V 1A Output Max. 5W

9. Technical Specifications

MIMO WATCH

Standard	LTE mobile watch
Frequency band	BT: 2402-2480MHz 2.4G WIFI: 2412-2472MHz GPS:1559-1610MHz WPC 119.6-148.6KHz 4G Bands 2/4/7/12/13/17/26/41/66 3G Bands 2/4/5
Operating Time (with fully charged battery)	Standby: Up to 72 hours Talking: Up to 3 hours
Charging time	< 3 hours
Temperature range	Operating: 0°C to 45°C Storage: -20°C to 60°C
Waterproof	IPX67
Battery	Battery type: Li-ion Polymer Battery Pack: 3.8V DC, 620 mAh Build in
Wireless charger	Input 5.0V 1A Output Max. 5W

9. Technical Specifications

MIMO WATCH

Standard	LTE mobile watch
Frequency band	BT: 2402-2480MHz 2.4G WIFI: 2412-2472MHz GPS:1559-1610MHz WPC 119.6-148.6KHz 4G Bands 2/4/7/12/13/17/26/41/66 3G Bands 2/4/5
Operating Time (with fully charged battery)	Standby: Up to 72 hours Talking: Up to 3 hours
Charging time	< 3 hours
Temperature range	Operating: 0°C to 45°C Storage: -20°C to 60°C
Waterproof	IPX67
Battery	Battery type: Li-ion Polymer Battery Pack: 3.8V DC, 620 mAh Build in
Wireless charger	Input 5.0V 1A Output Max. 5W



Manufactured, distributed and sold by Hubble Baby (HK) Limited. Apple logo is trademark of Apple Inc., registered in the U.S. and other countries. App Store is a service mark of Apple Inc. Google Play and Android are trademarks of Google Inc. Wi-Fi is a trademark of the Wi-Fi Alliance. All rights reserved.

