

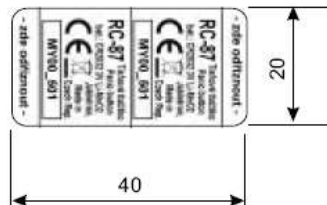
Product Label

Remarks:
Material - PE white
Print - Thermotransfer - black
Dimensions - approx. 40x20 mm , 13x10mm

1 : 1



notice: on label are prepared 2pcs
of product label - cut to the dimension



Production batch code
to be printed inside the box.

Font type: Arial CE
Size: 7
Style: Bold

Letters "MY" to be replaced with two-symbol
code from appropriate row of the table.

Letter "M" stands for the month and
letter "Y" for the year in which the batch
was manufactured

Example: A700-501
"A" stands for October
"7" year
"00" is a fixed constant
"501" is a version

M (month)	Y (year)
1 - Leden / January	7 - 2007
2 - Únor / February	8 - 2008
3 - Březen / March	9 - 2009
4 - Duben / April	A - 2010
5 - Květen / May	B - 2011
6 - Červen / June	C - 2012
7 - Červenec / July	D - 2013
8 - Srpen / August	E - 2014
9 - Září / September	F - 2015
A - Říjen / October	G - 2016
B - Listopad / November	H - 2017
C - Prosinec / December	I - 2018

Document : RC-87_@e.CDR	Page/s:	Document code: RC-87
Author: K. Hasenkopf	Date: 25.9.2007	Document name: Product Label
Verified:	Date: 25.9.2007	

The position of the FCC label : rear side of the device above the company label as shown on the drawing above.



